

**LINE FPG89-2  
S.P. 101 TO 1789**

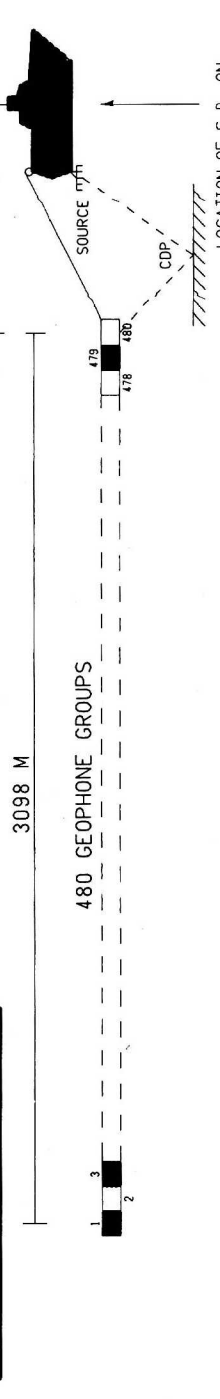
I.S.P.G. 1989  
BEAUFORT SEA

**FINAL STACK**

**FIELD DATA**

MAPLE G. WETTER  
SEPT/NOV 1988  
DATE SHEET  
RECORDING SYSTEM / DENSITY  
550 LITTON/0.2000 / 4260 B.P.L.  
SAMPLING RATE / RECORD LENGTH  
1.000 / 1.000  
RECORDING FILTERS  
RECORDING FILTERS  
TAPE PRIORITY  
SEISMIC SOURCE  
CABLE (SHOT CENTRE TO CENTRE)  
3000 M  
WIRETYPE / TYPE GROUP / SPACING  
100 M / 4.2K M  
SHOTPOINT INTERVAL / GROUP INTERVAL  
1.000 / 1.000  
NAVIGATION SYSTEM  
PRIMARY SYSTEM - SYLDEIS  
SECONDARY SYSTEM - AND

**SPREAD DIAGRAM**

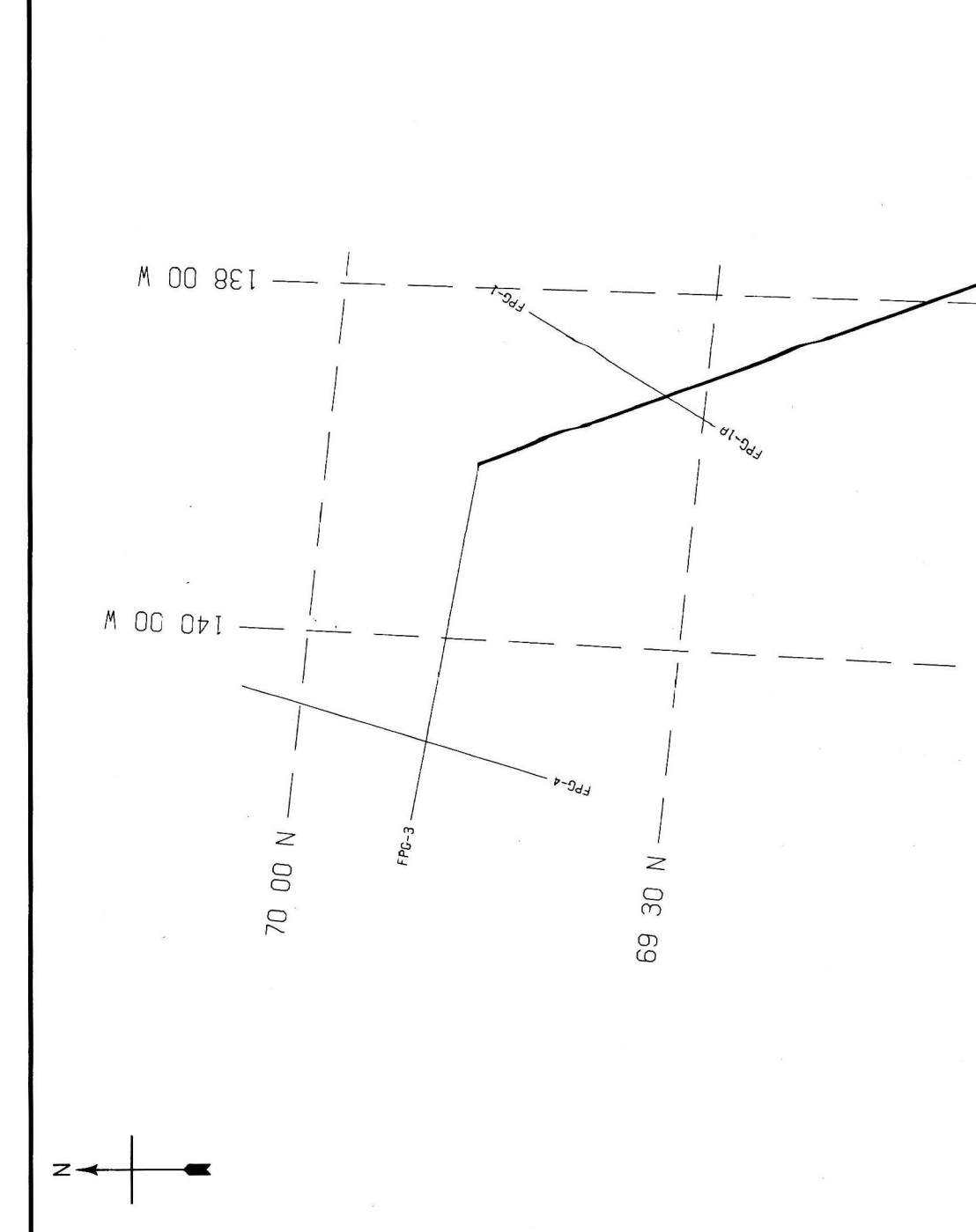


**DIGITAL PROCESSING**

DENORMALISED WAVES  
PRE CORRECTION NOISE  
VELOCITY FILTER (SHORT DOMAINS)  
VELOCITY FILTER (RECEIVER DOMAINS)  
VELOCITY ANALYSIS (2D GOLF)  
COMMON SEPARATION STACKS  
TIME/SPACE ANTIALIAS FILTER  
TIME/SPACE ANTIALIAS SCALING  
VALUES BELOW REFERENCED  
GATE LENGTHS 100 MS  
GATE LENGTHS 100 MS  
DISPLAY SCALE  
EVERY 4TH TRACE PLOTTED

**DISPLAY**

HORIZONTAL SCALE : 20.000 M/CM  
VERTICAL SCALE : 4000 CM/SEC  
TRACE TYPE, BASIS : 20 PERCENT  
DISPLAY UNIT : 0.671332 CM



OPEN FILE  
DOSSIER PUBLIC  
**2396**  
GEOLOGICAL SURVEY  
COMMISSION GÉOLOGIQUE  
CANADA

BEAUFORT SEA 1989

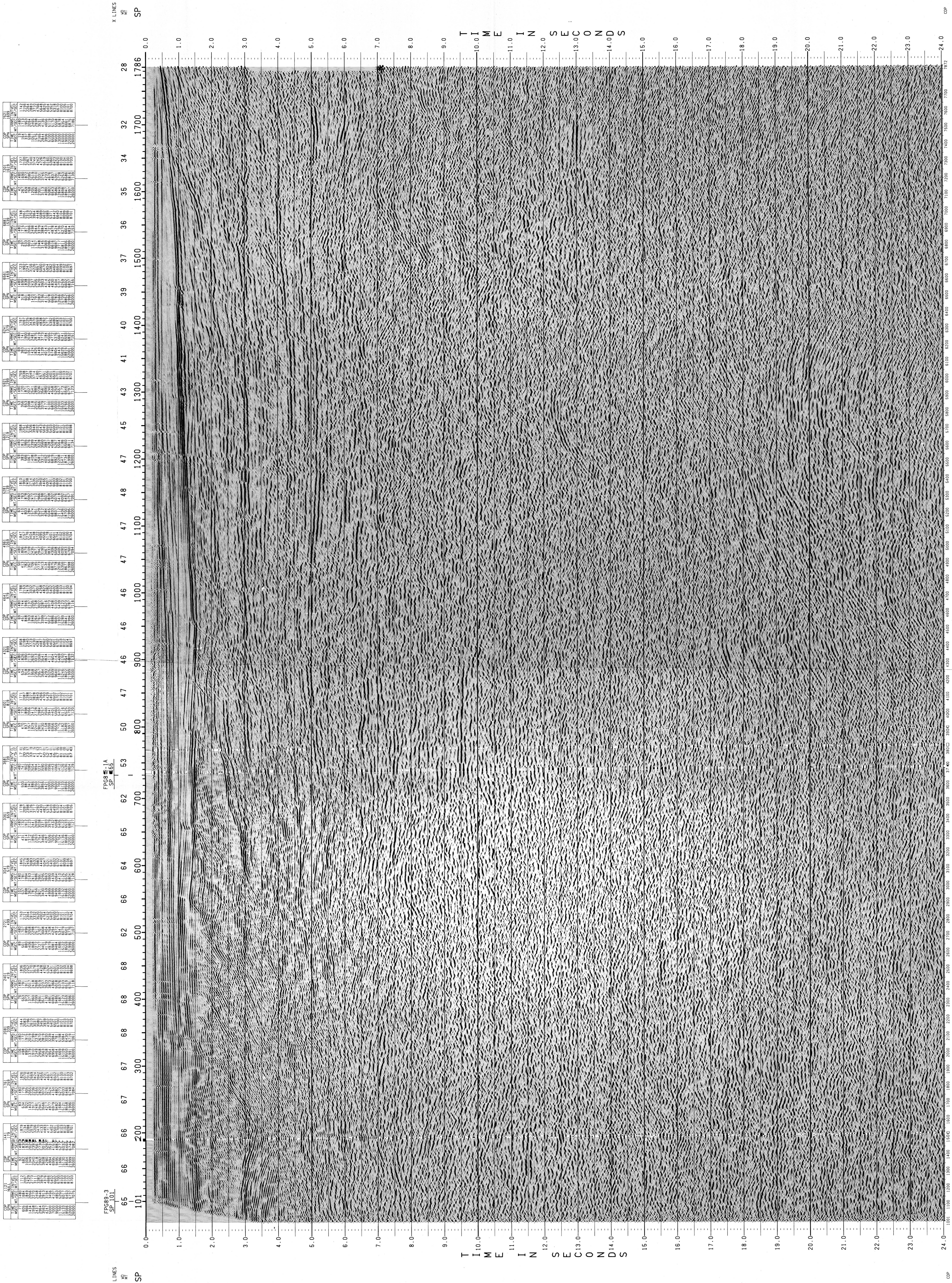
52 APR 1990  
23 20:42



HALLIBURTON GEOPHYSICAL SERVICES, INC.

PROCESSING CHECKED BY

8402/100352



FINAL STACK

LINE FPG89-2  
S.P. 101 TO 1789

I.S.P.G. 1989  
BEAUFORT SEA

LINE FPG89-2  
S.P. 101 TO 1789

I.S.P.G. 1989  
BEAUFORT SEA