

# Bedrock Geology of the Southern Coast and Intermontane Belts



## Legend

### Sedimentary

#### Tertiary

Q	OMC
PRG	Es
MPv	Ev
<b>Cretaceous</b>	
uKN	mKSB
uKPC	IKG
muKS	IKT
mKP	IKJ

#### Jurassic-Cretaceous

JKRM	JKV
JKC	

#### Jurassic

uJB	JH
uJT	JL
mJM	JLC
mJv	JBI
mJA	

#### Triassic - Jurassic

TrJC	TrC
TrCC	TrL
TrT	TrN
TrK	

#### Carboniferous mid- Jurassic

CJB	CJC
CTru	OTra
CPc	

#### Paleozoic

DPC	Sh
DPH	CJu

### Metamorphic

KTgn	MC
MCC	Mm
MST	TrHgn
MSL	

### Plutonic

#### Tertiary

M	E
Ogd	P

#### Cretaceous-Tertiary

KT	
----	--

#### Cretaceous

IK	mK
IKB	mKSBi
IKS	eK

#### Jurassic-Cretaceous

JK	
----	--

#### Jurassic

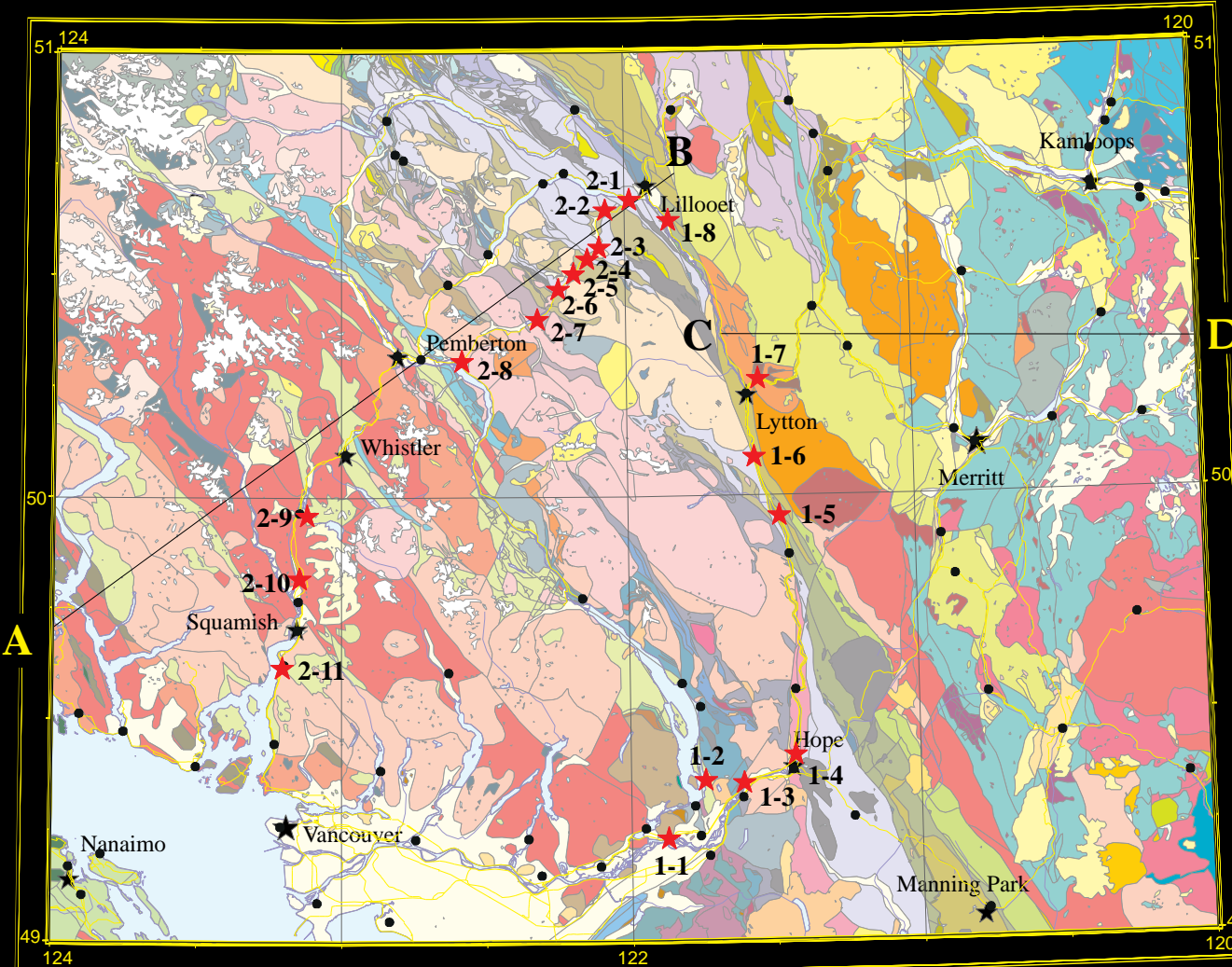
mJ	eJ
----	----

#### Triassic

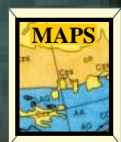
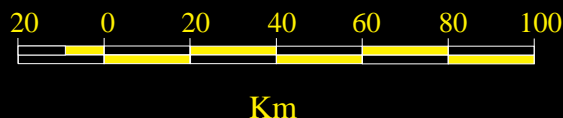
ITrG	ITrT
ITrM	

#### Permian-Triassic/Older

PTr	PPy
PTrm	



### Field Trip Stops



Return to Document

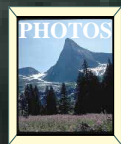


Figure 1: Bedrock Geological Map of the Southern Coast and Intermontane Belts, (1500,000 scale), showing field trip route, location of stops. and cross-section lines. Map legend units, field stops and cross-section lines are linked to the GIS Map Library.