

Return to Document

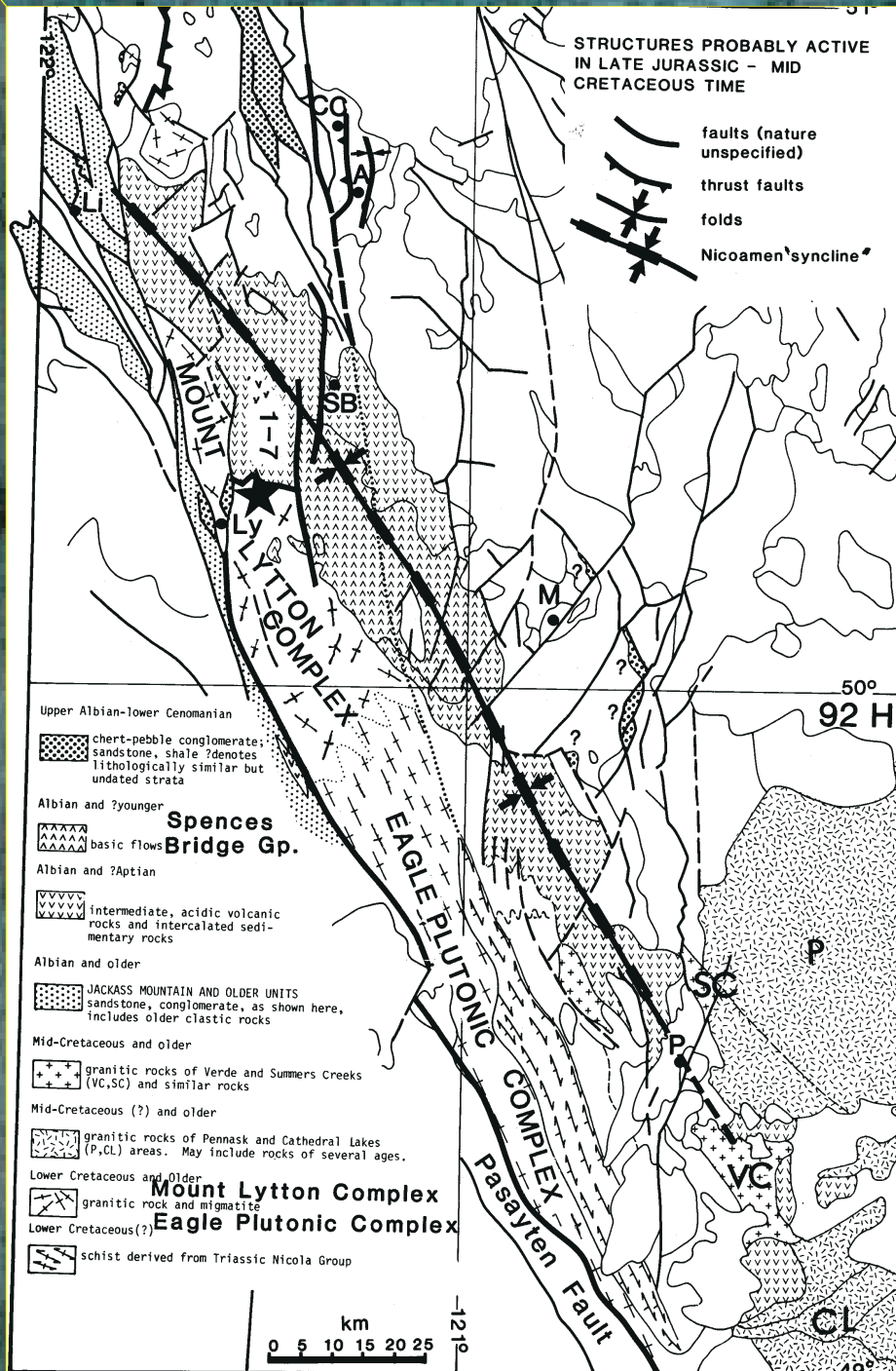
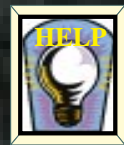


Figure 19: Southwestern margin of the Intermontane Belt, showing location of **Stop 1-7**. The dotted line speculatively connects the eastern boundary of the Eagle Plutonic Complex with the east-vergent thrust of Travers (1978) bringing Cache Creek over Quesnellia rocks, near Ashcroft. Settlements: A, Ashcroft; CC, Cache Creek, Li, Lillooet; Ly, Lytton; M, Merritt; P, Princeton; SB, Spences Bridge. Pluton names: CL, Cathedral Lakes; P, Pennask; SC, Summers Creek; VC, Verde Creek; (from Monger, 1985).