

Return to Document



Legend

- MPv: Miocene/Pliocene volcanics
- Es: Eocene sedimentary rocks
- IKPC: Powell Creek Formation
- KSq: Silverquick Conglomerate
- KSB: Spences Bridge Group
- KG: Gambier Group
- KT: Taylor Creek Group
- eKJ: Jackass Mountain Group
- JKRM: Relay Mountain Group
- JH: Harrison Lake Formation
- JLC: Last Creek Formation
- JKC: Cayoosh Assemblage
- TT: Tysaugton Group
- TCD: Cadwallader Group
- CJB: Bridge River Complex
- PEL: Brunene-East Liza Complex
- Sh: Shulaps Complex
- MCC: Chism Creek Schist
- EGd: Eocene plutons
- IKB: Late Cretaceous Bendir Suite
- IKS: Late Cretaceous Scurry Suite
- mKgd: mid-Cretaceous plutons
- eKgd: Early Cretaceous plutons
- mJgd: Mid/Late Jurassic plutons
- MSL: Stollicum Schist
- PT: Permian-Triassic plutons
- PTCC: Cache Creek Complex
- TN: Nicola Group

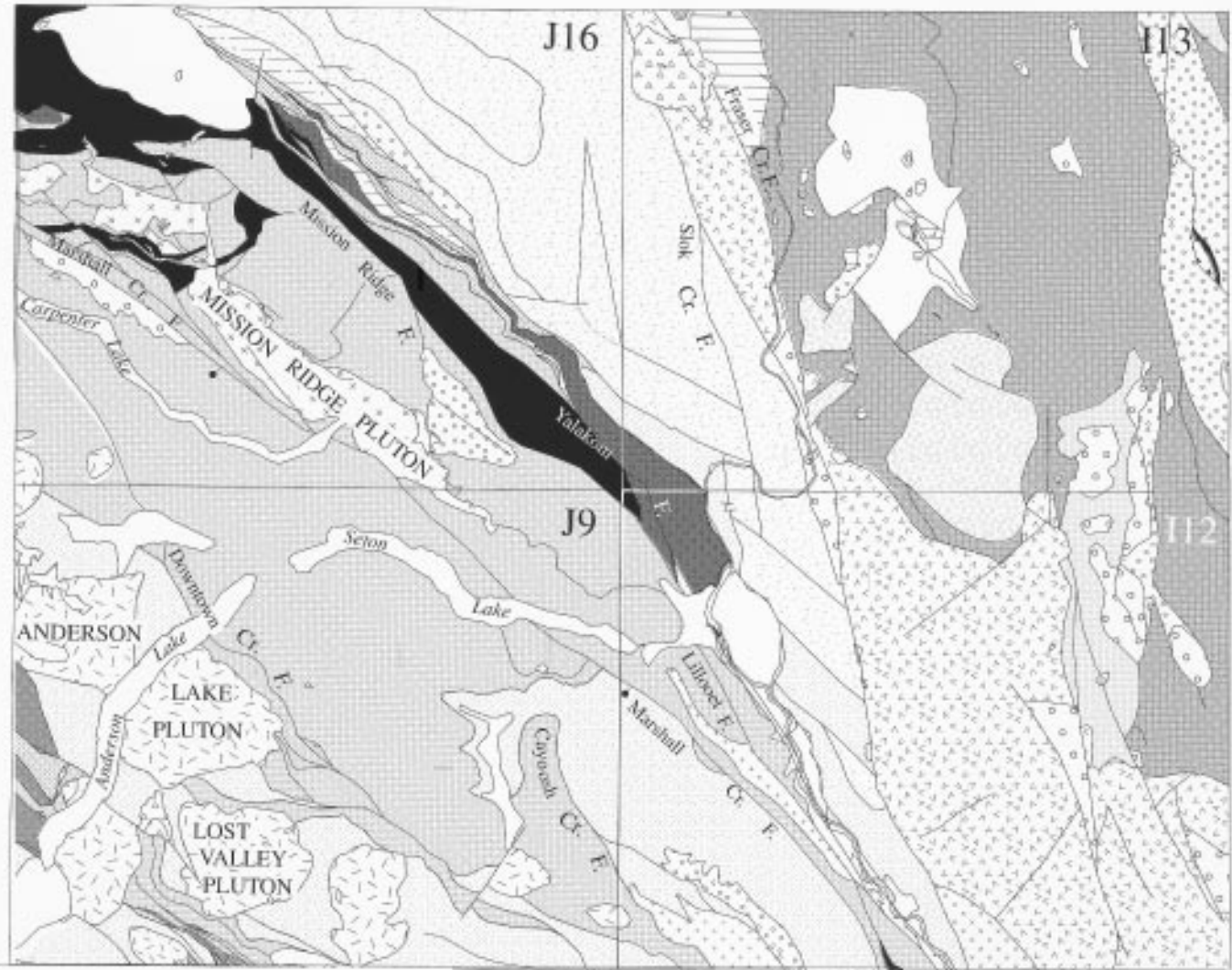


Figure 23: Geology of the Shulaps Range, based on work of Schiarizza et al., (1990a, b), Coleman (1990), Journeay and Northcote, (1992), and previous mapping of Roddick and Hutchison (1973), Woodsworth (1977), and Monger (1989a).