

REPORT

Heritage Resources Protection Plan Coffee Gold Mine

Submitted By:

Goldcorp Kaminak Ltd.
3260-666 Burrard Street
Vancouver, BC V6C 2X8

November 24, 2025

REVISION TRACKING LOG

Revision Tracking Log			
Version	Date	Section Updated	Description of Update
0	November 2023	-	First submission of the Heritage Resources Protection Plan
1	February - November 2025	Various	Updated in response to YG Heritage Resources Unit comments and included results of 2024 HRIA

TABLE OF CONTENTS

1.0	INTRODUCTION.....	7
1.1	Project Summary.....	7
1.2	Scope and Objectives	10
1.3	Incorporation of Traditional Knowledge and Consultation Feedback	10
	1.3.1 Traditional Knowledge Protocol	12
1.4	Synergies with Newmont Standards and Requirements and Other Project Documents	12
1.5	Roles and Responsibilities of Key Personnel	13
2.0	REGULATORY AND GUIDANCE DOCUMENTS	14
2.1	Regulatory.....	14
2.2	Guidance Documents.....	15
2.3	Heritage Resource Authorizations	16
3.0	HERITAGE RESOURCES PROTECTION POLICY	16
4.0	HERITAGE RESOURCES ASSESSMENTS	16
4.1	Heritage Resource Overview Assessments	19
4.2	Heritage Resources Impact Assessments	20
4.3	Other Heritage Assessments	21
4.4	Heritage Resources Inventory	21
5.0	TRADITIONAL KNOWLEDGE REPORTS	21
5.1	Tr'ondëk Hwëch'in.....	22
5.2	Selkirk First Nation	22
5.3	First Nation of Na-cho Nyäk Dun	22
5.4	White River First Nation	22
6.0	HERITAGE RESOURCES PROTECTION MEASURES	23
6.1	Future Heritage Resource Overview Assessments	23
6.2	Future Heritage Resources Impact Assessments	23
6.3	Heritage Site Avoidance with Heritage Site Protection Buffer	24
6.4	Systematic Data Recovery.....	24
6.5	Heritage Site Area Verification and Heritage Protection Buffer Refinement.....	25
6.6	Physical Barriers and Heritage Protection Buffer Marking	26
6.7	Chance Find Protocol.....	27
	6.7.1 Chance Find Protocol; Heritage Resources including Paleontological Resources, Other Than Human Remains.....	27
	6.7.2 Chance Find Procedure Protocol; Emergency Management of Human Remains	28

6.8	Construction Monitoring	30
6.9	Inspections	30
6.10	Annual Review of Ground Clearing Activities and Heritage Resource Site Locations	31
6.11	Summary of Heritage Sites Requiring Active Management	31
7.0	EMPLOYEE AND CONTRACTOR AWARENESS TRAINING.....	31
8.0	ANNUAL REPORTING.....	32
9.0	REFERENCES.....	33

LIST OF TABLES

Table 1-1	Newmont Global Standards	13
Table 1-2	Key Project Personnel	14
Table 4-1	Heritage Assessments for the Coffee Project (2010 – 2025)	17

LIST OF FIGURES

Figure 1-1	Coffee Project Location and Northern Access Route	8
Figure 1-2	Mine Site General Arrangement	9

APPENDICES

Appendix A	Heritage Resources Protection Plan Table of Concordance
Appendix B	Coffee Project and Coffee Exploration Project Known Heritage Sites and Protection Measures Summary Table
Appendix C	Heritage Resources Contact List
Appendix D	Areas of Potential Map

LIST OF ACRONYMS AND ABBREVIATIONS

Acronym / Abbreviation	Definition
AIA	Archaeological Impact Assessment
CFA	Yukon River Commercial Fishing Association
CMT's	culturally modified trees
EMR	Yukon Government Department of Energy, Mines and Resources
FNNND	First Nation Na-cho Nyäk Dun
Global Standards	Newmont Global Policies and Standards
H&S	Health & Safety
HLF	Heap Leach Facility
HRIA	Heritage Resource Impact Assessment
HROA	Heritage Resource Overview Assessment
HRPP	Heritage Resources Protection Plan
NAR	Northern Access Route
OIC	Order in Council
PFR	Preliminary Field Reconnaissance
Project	Coffee Gold Mine
Proponent	Newmont Corp.
RCMP	Royal Canadian Mounted Police
ROM	run-of-mine
RSY	Revised Statutes of the Yukon
SDR	Systematic Data Recovery
SER	Sustainability and External Relations
SFN	Selkirk First Nation
SOP	Standard Operating Procedure
TH	Tr'ondëk Hwëch'in
TK	Traditional Knowledge
UFA	Umbrella Final Agreement
WRFN	White River First Nation
WRSF	Waste Rock Storage Facility
YESAB	Yukon Environmental and Socio-economic Assessment Board
YG	Yukon Government
YOIC	Yukon Order-in-Council
YWB	Yukon Water Board

LIST OF SYMBOLS AND UNITS OF MEASURE

Symbol, Unit of Measure	Definition
ha	hectare
km	kilometre
m	metre
Mt	million tonnes
n	number
t/d	tonnes per day

INFORMATION REQUIREMENTS FOR QUARTZ MINE LICENSE AND WATER LICENSE

Information Requirement	Location in this Plan
Table of Concordance	Appendix A
Revision Log	Page i
Provide a general overview of the project description and location. Identify any areas of concern for heritage resources, and how this plan will address the protection of these resources.	Sections 1.1 and 1.2
Provide the company's policy on heritage resources and describe how the policy in combination with this plan will inform and guide staff and contractor decisions relating to heritage resources.	Section 3.0
Provide an overview of any desktop exercises that were completed to identify landscape features or locations in the project that are likely to be associated with heritage resources.	Section 4.0
Provide an overview of any field assessments that were carried out to identify heritage resources in the project area.	Section 4.0
Provide an overview of any impact assessments that were undertaken on site. Include any mitigative actions that were suggested to protect any known heritage resources in the project area.	Sections 4.2 and Appendix B
Describe the procedures that will be taken to protect known heritage resources on the property.	Section 6.0 to 6.12
Outline the actions that will be followed should a new heritage resource be encountered in the project area.	Section 6.7
Outline the reporting structure that is in place for the reporting of heritage resources that were not located during previous assessments. This should include the internal and external reporting structures, and how the documents are kept confidential.	Section 6.7, Appendix C
Provide the contact information for all people who will be involved in the reporting structure for heritage resources. This will include all appropriate company personnel, First Nations, Yukon Government and Royal Canadian Mounted Police contacts.	Appendix C
Describe the training that will be given to all employees and contractors regarding the protection of known and newly identified heritage resources. Identify the frequency which this training is updated.	Section 7.0

Information Requirement	Location in this Plan
Provide an overview of all assessments that have been undertaken to assess cultural impacts that the mining operations will have on the project area. Describe any areas of concern that were identified in these studies.	Section 4.0, Appendix B
Describe the policy for protection of traditional knowledge and involvement of First Nation(s) in assessing impacts for future project activities.	Sections 1.3 and 1.3.1
Describe the involvement of the affected First Nations in the development of this plan, amendments to this plan, and the notification that will take place when heritage resources are found.	Sections 1.3, 6.7 and 8.0
Outline the reporting structure that is in place for the reporting of heritage resources to the affected First Nation(s).	Sections 6.7 and 8.0, Appendix C

1.0 INTRODUCTION

1.1 Project Summary

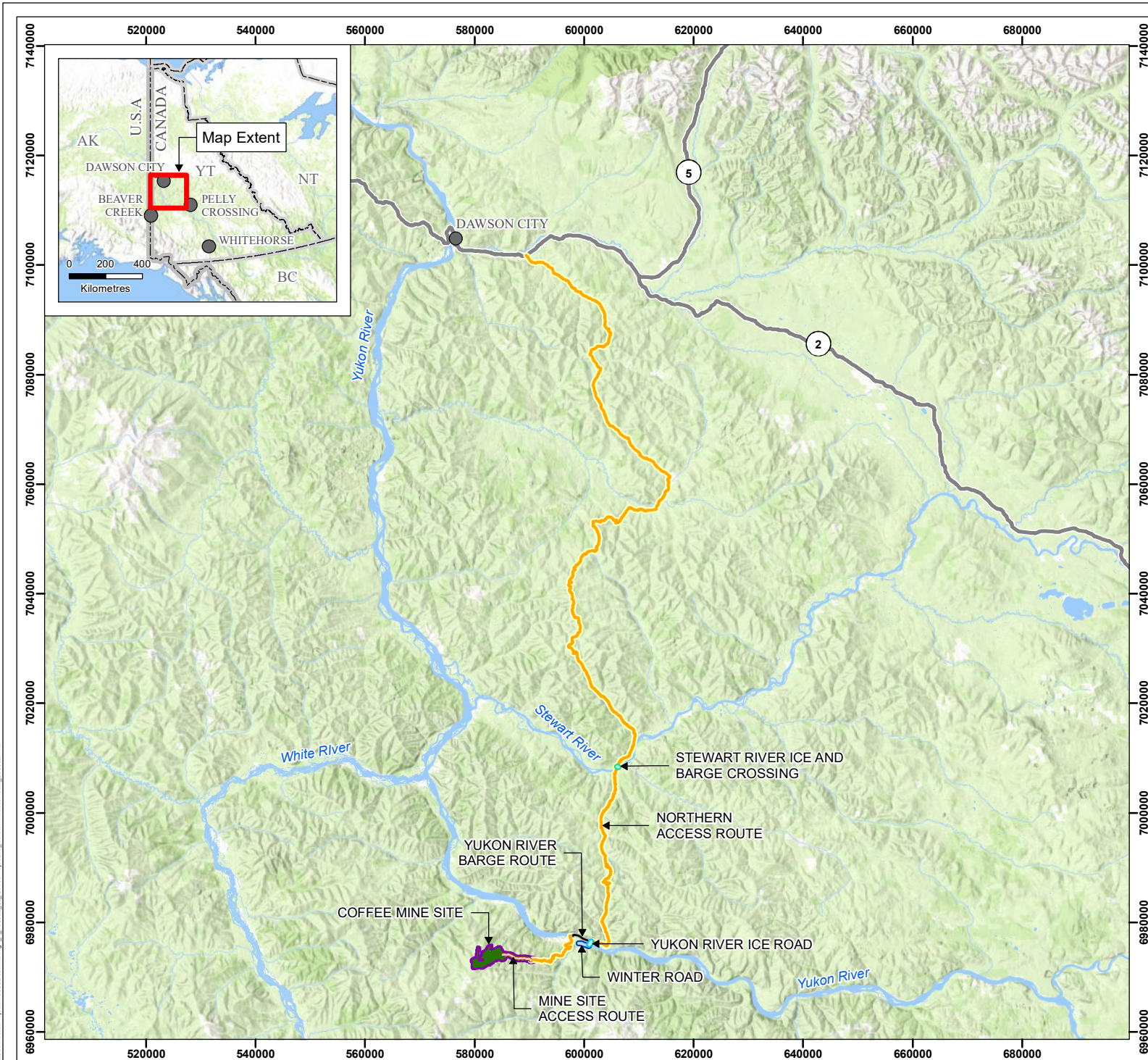
The proposed Coffee Gold Mine (the Project) is an open-pit gold mine owned by Goldcorp Kaminak Ltd., a subsidiary of Newmont (the Proponent), located on the south side of the Yukon River in the White Gold District of west-central Yukon, approximately 130 km south of the City of Dawson, 140 km west of Pelly Crossing, 95 km north-east of Beaver Creek, and 340 km northwest of Whitehorse. The Project is located wholly within the traditional territory of Tr'ondëk Hwëch'in (TH), partially within the traditional territory of Selkirk First Nation (SFN) and First Nation of Na-cho Nyäk Dun (FNNND), and partially within the asserted traditional territory of White River First Nation (WRFN). The Project contains several gold occurrences within an exploration concession (the Coffee Exploration Project) covering an area of more than 600 km². The Mine Site will be accessed by road from Dawson via a 16-km stretch of Klondike Highway and 192-km all-season road, referred to as the Northern Access Route (NAR) (Figure 1-1). The NAR includes seasonal barge crossings on both the Stewart and Yukon rivers, with ice bridges and a seasonal winter road in the winter months.

The Project is comprised of open pits named Latte, Double Double, Supremo and Kona, and one permanent Waste Rock Storage Facility (WRSF) named Alpha (Figure 1-2). The ore production rate is proposed to be up to approximately 9.0 million tonnes (Mt) per year, producing an estimated total of 67 Mt of heap leach feed over the 10-year Operation Phase. The conceptual-level estimate for waste material to be moved over the life of mine (LOM) is 330 Mt based on an average strip ratio of 5.0:1. The ore will be crushed and transported to the Heap Leach Facility (HLF) via overland conveyor or trucks for nine months of the year. During the three coldest months of winter, run-of-mine (ROM) ore will be stockpiled in the ROM stockpile. Gold will be extracted from gold-bearing leach solution by a six tonnes per day (t/d) adsorption, desorption, recovery carbon plant with mercury retorting to produce a final gold doré product. A total of 2.6 million ounces of gold is planned to be recovered over a 10-year mine life.

The Project phases are defined as follows:

- Construction Phase: Q2 Year –3 to end of Year –1 (30 months)
- Operation Phase: Year –1 to end of Year 9 (10 years)
- Reclamation and Closure Phase: Year 10 to end of Year 21, including a 6-year Post-Mining Closure Stage and a 5-year Active Closure Stage (11 years)
- Post-Closure Phase: Year 21 onwards as determined to be required.

These phases broadly describe the activities occurring within a particular time period; however, some activities will continue from one phase to another as mine site development advances with operational activities (e.g., Open Pits, WRSF). When areas that support mine operations are no longer required, they will be progressively reclaimed. The overall Project schedule is the general expected scenario for mine construction and operation; detailed activities are subject to change depending on detailed mine planning and the timing of receipt of authorizations.



COFFEE GOLD MINE

Coffee Project Location and Northern Access Route

Legend

- Stewart River Ice and Barge Crossing
- Yukon River Barge Route
- Yukon River Ice Road
- Winter Road
- Mine Site Access Route
- Northern Access Route
- Project Area
- Project Footprint
- Highway
- Waterbody

- Notes**
1. This map is not intended to be a "stand-alone" document, but a visual aid of the information contained within the referenced Report. It is intended to be used in conjunction with the scope of services and limitations described therein.
 2. Contains information licensed under the Open Government Licence - Yukon Territory
 3. Basemap: ESRI World Topographic Map
 4. Inset Basemap: ESRI World Topographic Map

N

1:1,000,000

0 5 10 15 20 25
Kilometres

NAD 1983 UTM Zone 7N
Page Size: 8 1/2" x 11"

Figure 1.1	Date: Mar 2, 2023	Drawn by: AS	Reviewed: KP
------------	----------------------	-----------------	-----------------



Path: S:\Geomatics\Projects\103882\103882_103882_03_CoffeeProjectLoc_NorthernAccessRoute_230302.mxd

COFFEE GOLD MINE

General Arrangement - Mine Site

Legend

- Double Double Pit
- Kona Pit
- Latte Pit
- Supremo Pit

Notes

1. This map is not intended to be a "stand-alone" document, but a visual aid of the information contained within the referenced Report. It is intended to be used in conjunction with the scope of services and limitations described therein.
2. Contains information licensed under the Open Government Licence - Yukon Territory
3. Inset Basemap: ESRI World Topographic Map

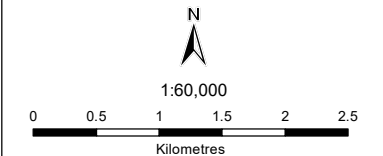
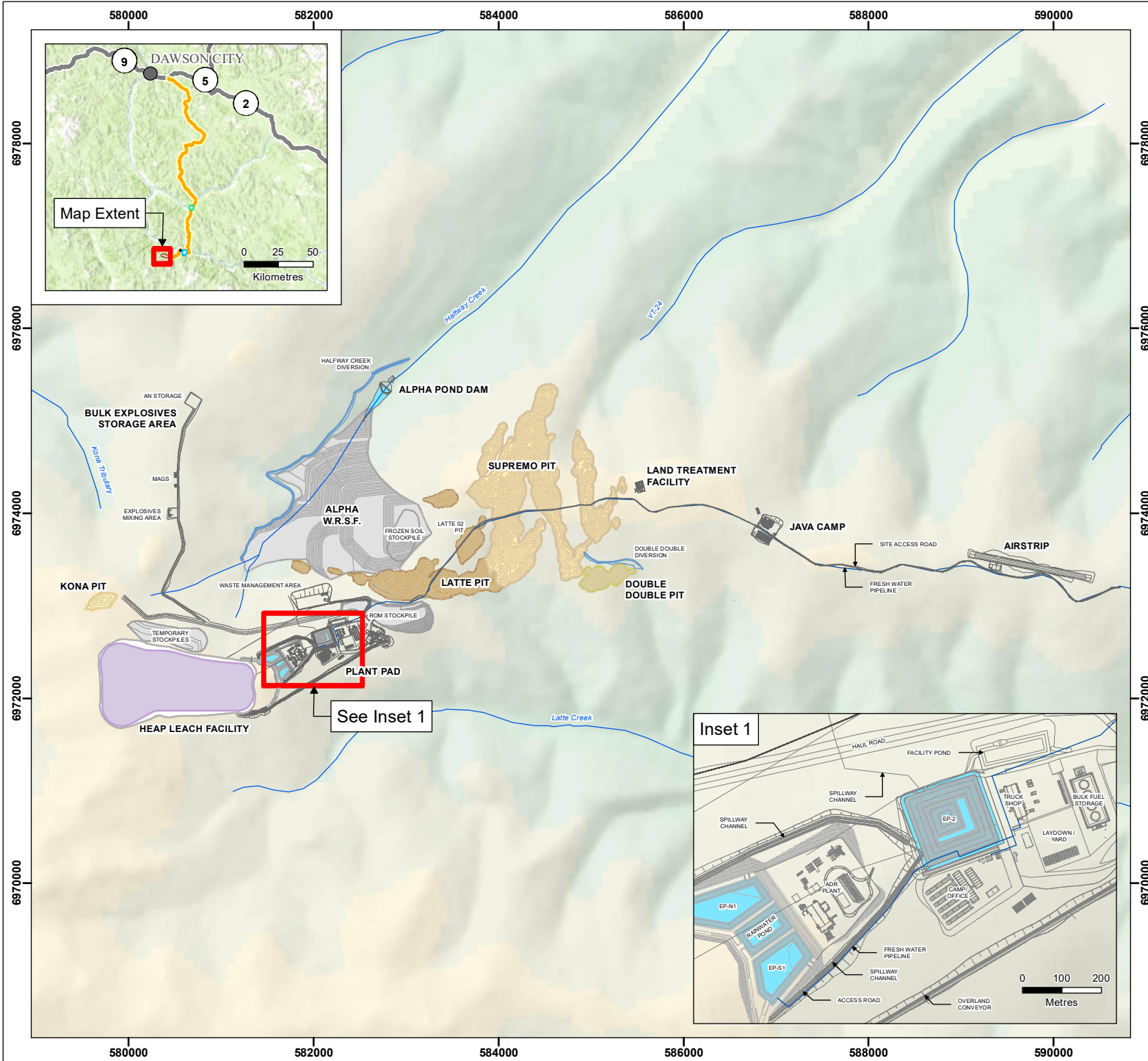


Figure 1.2	Date: Oct 6, 2023	Drawn by: AS	Reviewed: CH
------------	----------------------	-----------------	-----------------



Path: S:\G:\com\sc\p\proj\1038\1038\m\m\p\fig1_2_103882_03_GeneralArrangement_231008.mxd

1.2 Scope and Objectives

The objective of the Heritage Resources Protection Plan (the Plan; HRPP) is to protect both known and previously unrecorded heritage resources from significant adverse effects during the Project's and Coffee Exploration Project's duration. The Plan outlines the measures the Proponent will employ to protect these resources from Project and Coffee Exploration Project activities. Additionally, the Plan offers guidelines for Project and Coffee Exploration Project personnel on actions and contacts should unrecorded heritage resources be discovered during construction or operation.

This Plan has been written to meet the guidance provided in the *Plan Requirement Guidance for Quartz Mining Projects* (YWB and EMR 2013), under Section 18.0 Heritage Resources Protection Plan.

Commitments that were made during the Yukon Environmental and Socio-economic Assessment Board (YESAB) screening process related to the HRPP are incorporated into the Plan where possible and are summarized in the Heritage Resources Protection Plan Table of Concordance (Appendix A). The Table of Concordance includes commitments made during the assessment process only, as there were no Decision Document conditions related to heritage resources.

Heritage resources are protected under the Yukon *Historic Resources Act* (RSY 2002, c.109) its regulations and resources are additionally managed under provisions of the Yukon First Nations Umbrella Final Agreement (UFA), Chapter 13 (refer to Section 2.0, all corresponding legislation). The term 'heritage resources' refers to archaeological, historical, and paleontological resources and is used in this Plan to refer to all three resource types unless specifically stated otherwise. Human remains are included in this definition.

This Plan includes a Chance Find Protocol detailing the process should a heritage resource be found at the Project. To date, numerous heritage resources have been identified within the Project footprint and Coffee Exploration Project claims. Project and Coffee Exploration Project components with the potential to affect heritage resources include clearing and grubbing, site grading, deposition of imported fills, and construction, including the installation of mine facilities, utilities, support facilities, access roads and mining and exploration activities.

Throughout the life of the Project, the Proponent will collaborate with affected First Nations and the Yukon Government (YG) Heritage Resources Unit, to ensure the protection of heritage resources at the Project and Coffee Exploration Project site. As detailed in the Plan (Sections 2.0 and 3.0), the Proponent will adhere to applicable heritage protection legislation and regulatory requirements for the management of heritage resources.

1.3 Incorporation of Traditional Knowledge and Consultation Feedback

Engagement with affected First Nations regarding heritage studies at the Coffee property began in 2009, and Project-focused consultation and engagement with affected First Nations, local communities, interested persons, the public, and government agencies began in 2013. A Collaborative Heritage Study was initiated with participants from TH, SFN, and WRFN and the final report was completed in 2014. However, as SFN was not able to participate in the Collaborative Heritage Study to completion, a socio-economic and heritage workshop was conducted with SFN in September 2017. The outcomes of the study and workshop are incorporated herein.

Some specific concerns heard during consultation events were:

- Avoidance of heritage sites
- Assessment of potential effects of the Project on heritage values
- Completion of archaeological assessments
- Completion of Traditional Knowledge (TK) studies
- Ensure communication with contractors and construction personnel during construction and ensure adherence to the HRPP
- Training and involvement of First Nations' citizens in heritage monitoring
- Procedures and process for Systematic Data Recovery (SDR); and
- Continued interest regarding collaboration regarding heritage resources and their protection.

Documents regarding heritage and traditional land use have also been provided to the Proponent for consideration in preparation of the Plan. These include:

- *Coffee Gold Mine Project Northern Access Route: Review of Route Selection Criteria and a Comparative Analysis of Goldcorp's Proposed Northern Access Route* (Henderson Dome - Maisy May Creek) and an Alternate Route (Black Hills Creek). DRAFT January 2018. Developed by Tr'ondëk Hwëch'in Natural Resources Department and Heritage Department together with LGL Limited.
- *White River First Nation Knowledge and Use Study*. 2014. The Firelight Group, with White River First Nation.
- *Compilation of Information relating to Coffee Creek/White River areas*. 2014. H. Dobrowolsky. Prepared for Kaminak Gold Corporation, Tr'ondëk Hwëch'in First Nation, and White River First Nation.
- *WRFN: Consideration of the Northern Boundary*. 2013. Easton, N.A., Kennedy, D., and R. Bouchard.
- *Coffee Creek Traditional Knowledge Survey, Final Report*. A. Winton, December 2012.
- *Summary of Streams in the Tr'ondëk Hwëch'in Traditional Area: A Search for Candidate Streams to Support a Program based on a Klondike Area Central Incubation/Outplanting Facility*. Yukon River Commercial Fishing Association, and Tr'ondëk Hwëch'in. 1997.

As a result of consultation with affected First Nations, the Proponent has also committed to the following mitigations:

- To mitigate potential disturbance to a nearby heritage site, the proposed barge landing on the south side of the Stewart River was relocated east of its planned location.
- The final planned NAR route was selected to minimize disturbance, particularly to archaeological and cultural heritage sites.
- When Systematic Data Recovery is not the preferred mitigation approach, collaborate with affected First Nations to identify and implement alternative mitigation measures.
- All staff and contractors will receive orientations that include a heritage component, which outlines the details of this plan and associated standards, protocols, and procedures.

First Nation engagement and consultation is ongoing, and any feedback that is received or concerns that are heard during consultation will be incorporated into this plan, where applicable.

1.3.1 Traditional Knowledge Protocol

Awareness of TK has influenced the assessment of potential effects to heritage resources.

The Project and Coffee Exploration Project are located wholly within the traditional territory of TH, who are Hän, and portions of the Project and Coffee Exploration Project are located within the traditional territories of SFN and FNNND, who are both Northern Tutchone. A portion of the Project and Coffee Exploration Project are also within the asserted traditional territory of WRFN, which includes both Northern Tutchone and Upper Tanana people. Sources on the ethnography and ethnohistory of these groups were reviewed as part of the Heritage Resource Overview Assessments (HROA) and Heritage Resource Impact Assessments (HRIA) conducted during the Project's feasibility program and subsequent studies. This information was considered with particular focus on aspects of traditional land use that have the greatest influence on the archaeological record (i.e., material culture and seasonal rounds) and evaluated heritage resource potential within the Project and Coffee Exploration Project footprint and 50 m buffer. Further examination of the ethnography and ethnohistory of the relevant First Nations groups is provided in the HROAs and HRIAs.

The Proponent is committed to the protection of TK and considers TK to be confidential unless stated otherwise by affected First Nations. The continued involvement of affected First Nations in assessing potential effects to heritage resources from Project- and Coffee Exploration Project-related activities will be continued throughout the life of the Project.

1.4 Synergies with Newmont Standards and Requirements and Other Project Documents

As an important part of Newmont's internal governance process, Newmont has implemented Global Policies and Standards (Global Standards) that are reviewed and preliminarily approved by a Global Policies & Standards Committee. The Global Standards provides the framework and standards for Newmont sustainability management and ensures a consistent approach for implementing these global policies across the Company.

The Global Standards apply to all directors, officers, and employees of Newmont Corporation, its subsidiaries, and any other entities that it controls. A variance request process for existing or future conditions is in place. The process provides an alternative mechanism for those instances where a Newmont site/operation cannot logistically or feasibly conform to a requirement established in a Global Standard due to special conditions or unique hardships. The Global Standards are intended to be fully integrated into all core business functions, and they emphasize sustainability, responsibility, and accountability at all organizational levels.

The list of Global Standards is provided in Table 1-1.

Table 1-1 Newmont Global Standards

Global Standards	
Air Emissions Management Standard	Land Acquisition and Involuntary Resettlement Standard
Biodiversity Management Standard	Local Procurement and Employment Standard
Closure and Reclamation Management Standard	People Policy
Code of Conduct	Product Stewardship Standard
Community Investment and Development Standard	Social Baseline and Impact Assessment Standard
Cultural Heritage Standard	Stakeholder Relationship Management Standard
Drug and Alcohol Policy (Coffee-Specific)	Tailings Storage Facility and Heap Leach Facility Environmental Standard
Hazardous Materials Management Standard	Tailings Storage Facilities Technical and Operations Standard
Health and Safety Policy	Waste Management Standard
Human Resources Standard	Waste Rock and Ore Stockpile Management Standard
Human Rights Standard	Water Management Standard
Indigenous Peoples Standard	

The HRPP should be viewed in concert with the following additional management plans in order to inform a holistic understanding of heritage resources protection in line with mine development, operations and closure activities:

- Emergency Response Plan
- General Mine Development Plan
- Mine Operations Plan
- Reclamation and Closure Plan
- Access Route Construction Management Plan
- Access Route Operational Management Plan.

1.5 Roles and Responsibilities of Key Personnel

The Proponent has committed to providing the necessary human, material, and financial resources to implement and maintain the HRPP. The Environmental Department will be responsible for implementation of the monitoring components outlined in the Plan. Key Project personnel responsible for being familiar with the contents of this Plan are shown in Table 1-2.

Table 1-2 Key Project Personnel

Role	Responsibility
Mine General Manager	Overall responsibility for Mine Site management.
Operations Manager	Responsible for mine planning and production, mine technical monitoring, and mine regulatory compliance.
H&S Manager	Responsible for conducting regular safety site inspections and implementing the appropriate controls in a timely manner. The H&S Manager shall maintain records of all safety inspections as well as any actions taken because of these inspections throughout the life of the Project. Where safety inspections show the potential for environmental effects, the H&S Manager will work in collaboration with the Environmental Department.
Sustainability and External Relations (SER) Department	Responsible for recording and addressing any complaints received from nearby land users, or other interested parties regarding heritage-related impacts off-site. The SER department shall maintain records of all complaints received as well as any actions taken because of these complaints.
Environmental Manager	Responsible for permitting, environmental monitoring, and regulatory compliance. Responsible for implementation of the HRPP and ensuring that the Plan requirements are followed at the Project and Coffee Exploration Project.

2.0 REGULATORY AND GUIDANCE DOCUMENTS

2.1 Regulatory

Heritage resources in the Yukon are protected under the Yukon *Historic Resources Act*, and managed under provisions of the Yukon First Nations UFA, Chapter 13.

Relevant legislation to the HRPP includes:

- *Historic Resources Act* and the Archaeological Sites Regulations (YOIC 2003/73)
- Tr'ondëk Hwëch'in *Heritage Act*
- First Nation of Na-cho Nyäk Dun *Heritage Act*
- *Quartz Mining Act* and the Quartz Mining Regulation (OIC 2003/64), specifically Schedule 1 Operating Conditions, Section E regarding historic objects and burial grounds
- *Territorial Lands (Yukon) Act* and its regulations, specifically:
 - Land Use Regulation (OIC 2003/51) specifically Section 9 (Prohibitions), Section 15 (Archaeological sites)
 - Resource Roads Regulation (OIC 2024/186) – specifically Section 9 (Operational Plan), Section 13 (Heritage resource assessment) and Section 20 (Decision regarding primary permit).

The *Historic Resources Act* defines historic objects and human remains as follows:

“Archaeological object” means an object that:

(a) is the product of human art, workmanship, or use, and it includes plant and animal remains that have been modified by or deposited in consequence of human activities,

(b) is of value for its archaeological significance, and

(c) is or has been discovered on or beneath land in the Yukon or is or has been submerged or partially submerged beneath the surface of any watercourse or permanent body of water in the Yukon.

“Ethnographic object” means an item of material culture relating to the history and traditional culture of an ethnic group:

“Historic object” - each of the following is a historic object:

(a) an archaeological object that has been abandoned,

(b) a palaeontological object that has been abandoned, and

(c) an abandoned object that is designated.

“Human remains” means non-fossilized remains of human bodies that have historic significance and are found outside a recognized cemetery or burial site:

“Palaeontological object” does not include human remains but does refer to the remains or a fossil or other object that indicates the existence of extinct or prehistoric plants or animals and that:

(a) is of value for its historic or palaeontological significance, and

(b) is or has been discovered on or beneath land in the Yukon or is or has been submerged or partially submerged beneath the surface of any watercourse or permanent body of water in the Yukon (YG 2002).

Common heritage resources found in the Yukon range from cabins, camps, trails, animal traps, fire-cracked rock, fishing sites, game drives and surrounds, culturally modified trees (CMT’s), bottle middens, fenced graves (note that very old graves are unmarked but may have personal items such as cups or plates associated with them), burial rock mounds, hunting implements, and stone tools and the byproducts of their production.

2.2 Guidance Documents

The following non-legislative documents also provide relevant guidance for heritage resources management:

- Tr’ondëk Hwëch’in Best practices for Heritage Resources (Tr’ondëk Hwëch’in 2016b)
- The Yukon Handbook for the Identification of Heritage Sites and Features (Gotthardt and Thomas 2007)
- Yukon Mineral Exploration Best Management Practices for Heritage Resources (YG 2010)
- Guidelines Respecting the Discovery of Human Remains and First Nation Burial Sites in the Yukon (citation)
- Best Management Practices for Burial Sites and Human Remains in Yukon (YG 2014a); and

- Best Management Practices for Fossils at Yukon Placer Mines (YG 2014b).

2.3 Heritage Resource Authorizations

The *Historic Resources Act* states that no artifacts may be removed from an archaeological or historic site without a permit (YG 2002).

3.0 HERITAGE RESOURCES PROTECTION POLICY

The Plan has been developed to support and facilitate the protection of heritage resources during all phases of the Project and Coffee Exploration Project. The HRPP applies to the Proponent, employees, and contractors engaged in any Project-related construction, operation, and closure and reclamation activities.

The Proponent recognizes the value of heritage resources and is committed to their protection. The Proponent will comply with:

- Yukon *Historic Resources Act* (RSY 2002, c.109)
- Archaeological Sites Regulation (YOIC 2003/73)
- Tr'ondëk Hwëch'in *Heritage Act*
- First Nation of Na-cho Nyäk Dun *Heritage Act*
- *Quartz Mining Act*
- Quartz Mining Regulation (YOIC 2003/64)
- *Territorial Lands (Yukon) Act* and its regulations, specifically:
 - Land Use Regulation (OIC 2003/51)
 - Resource Roads Regulation (OIC 2024/186)

The Proponent will also follow any agreements made with affected First Nations.

The Proponent will implement the following measures:

- Ensure all employees and contractors working on the Project and Coffee Exploration Project have been trained in their responsibilities as outlined in the HRPP.
- Ensure all employees and contractors follow the protocols listed in the HRPP and its appendices.

4.0 HERITAGE RESOURCES ASSESSMENTS

Fifteen heritage resource assessments have been completed to date for the Project and the Coffee Exploration Project. This includes four HROAs conducted between 2010 and 2020 and eleven HRIAs conducted between 2011 to 2025. See Table 4-1, below, for a list of heritage resource assessments completed at the Project and the Coffee Exploration Project.

The results of these assessments have been used to inform this Plan. The objectives of these studies are provided in Sections 4.1, 4.2 and 4.4. Paleontological assessments have not been completed for the Project or Coffee Exploration Project; however, over 60% of the Mine Site area is underlain by permafrost and these frozen soils have a higher potential for preservation of Pleistocene-age paleontological resources.

Section 4.0 to 4.4 of this Plan do not specifically list heritage resource sites. Instead, a complete inventory of these sites is detailed in Appendix B.

Table 4-1 Heritage Assessments for the Coffee Project (2010 – 2025)

Heritage Report Type	Permit	Report Published Date	Heritage Report Name	Researcher	Assessment Area
HROA and PFR	10-23ASR	2010	Heritage Resource Overview Assessment and Preliminary Field Reconnaissance of Coffee Gold Project for Kaminak (10-23ASR).	Matrix (Kristensen and Heffner)	Coffee claims – Generally, Coffee camp, Java access road and proposed mine site footprint (ridge that separates Latte and Halfway Creek)
HRIA	11-03ASR	2012	Heritage Resource Impact Assessment of the Coffee Cold Project for Kaminak (11-03ASR)	Matrix (Kristensen and Heffner)	Coffee claims – Generally, Coffee camp, Java access road and proposed mine site footprint (ridge that separates Latte and Halfway Creek)
HROA	N/a	2017	Heritage Resources Overview Assessment for a Proposed Access Road Corridor to the Coffee Property.	Stantec (Heffner)	Northern Access Route
HRIA	16-13ASR	2018	Heritage Resource Impact Assessment: Kaminak Gold Corporation/ Goldcorp Inc. Coffee Creek Mine Access Road (16-13ASR)	Ecofor (Bennett)	Northern Access Route
HRIA	17-15ASR	2018	Heritage Resource Impact Assessment: Goldcorp Coffee Gold Project Northern Access Route Final Report (17-15ASR)	Ecofor (Bennett)	Northern Access Route
HRIA	18-24ASR	2019	Heritage Resource Impact Assessment: Coffee Gold Project Communication Tower Sites on Henderson Dome and King Solomon Dome Final Report (18-24ASR).	Ecofor (Bennett)	Henderson Dome and King Solomon Dome

Heritage Report Type	Permit	Report Published Date	Heritage Report Name	Researcher	Assessment Area
HROA	N/a	2020	Heritage Resource Overview Assessment: Dan Man Claims	Ecofor (Bennett)	Dan Man claims (claim extension to the Coffee property)
HROA	N/a	2020	Heritage Resource Overview Assessment: Coffee Exploration Project Unassessed Claim Areas 2020	Ecofor (Bennett)	Coffee claims – completion of HROA for Coffee claim block
HRIA	19-23ASR	2020	Heritage Resource Impact Assessment: Coffee Exploration Project 2019 HRIA of Previously Unassessed Localities in the Claim Area Final Report (19-23ASR).	Ecofor (Bennett)	Coffee claims – select areas of potential in the east, west and southern claim block
HRIA	20-16ASR	2021	Heritage Resource Impact Assessment: Coffee Exploration Project and Dan Man Claims 2020 HRIA of Previously Unassessed Areas Final Report (20-16ASR)	Ecofor (Bennett)	Dan Man claims (claim extension to the Coffee property)
HRIA	21-36ASR	2022	Heritage Resource Impact Assessment: Coffee Exploration Project 2021 Final Report (21-36ASR)	Ecofor (Bennett)	Coffee claims – select areas of potential in the north (near YT-24) and southeast claim block
HRIA	22-27ASR	2023	Heritage Resource Impact Assessment: Coffee Exploration Project 2022 Final Report (22-27ASR)	Ecofor (Bennett)	Coffee camp, Java airstrip, Northern Access Route (west of Coffee creek), Coffee claims – north and west of Latte Creek.
HRIA	23-34ASR	2024	Heritage Resource Impact Assessment: Coffee Exploration Project 2023 Final Report (23-34ASR)	Ecofor (Bennett)	Coffee claims – select areas between Latte and Halfway Creek

Heritage Report Type	Permit	Report Published Date	Heritage Report Name	Researcher	Assessment Area
HRIA	24-33ASR	2025	Heritage Resource Impact Assessment: Coffee Gold Project Northern Access Route Barge Landing Sites Final Report (24-33ASR)	Ecofor (Bennett)	Northern Access Route – Stewart River Barge Landing and North Yukon River Barge Landing.
HRIA	24-37ASR	2025	Heritage Resource Impact Assessment: Coffee Gold Project Coffee Creek Terrace Final Report (24-37ASR)	Ecofor (Bennett)	Coffee Creek – west terrace and east terrace.

4.1 Heritage Resource Overview Assessments

Since 2010, four HROA’s have been completed for the Project (Table 4-1) including the Project and Coffee Exploration Project. The objectives of the HROA’s were to assess the heritage resource potential and sensitivity within a specific area of the Project and Coffee Exploration Project. As noted earlier, heritage resources are protected in Yukon from disturbance under several Acts and regulations. Prior to conducting any ground disturbance, the Proponent must ensure that any previously recorded heritage resource sites are protected from ground disturbance with a protection buffer and that heritage resource potential is determined in areas not previously assessed for heritage resources. Areas of elevated heritage resource potential require further evaluation with a HRIA prior to ground disturbance.

To accomplish the HROA’s, the Proponent engaged heritage subject matter experts to conduct an in-depth review of the study area’s physical, environmental, cultural, and historical aspects using desktop research. The results of the review were then used to identify areas where there is a high likelihood of finding new, undiscovered heritage resources. The chance of encountering such resources is ascertained by examining various factors including, but are not limited to, the area’s topography, viewshed, the closeness to natural resources such as water and food sources, or places known for stone tool materials, as well as the vicinity to known heritage resource locations. This approach is widely adopted in cultural resource management, and it aims to proactively identify areas of potential concern to avoid impacting them during any ground disturbing activities (Bennett 2020).

All four HROA’s identified areas with elevated heritage resource potential and recommended that HRIAs be performed in the elevated heritage resource potential areas prior to ground disturbing work. Additionally, the HROA’s identified previously recorded heritage sites within some areas of the Project.

At the time of developing this Plan, no further HROA’s are required unless there are additional mineral claims added to the Coffee Exploration Project claim boundary or alignment change to the NAR outside of the HROA assessed area.

4.2 Heritage Resources Impact Assessments

Eleven HRIAs have been conducted in relation to the Project and Coffee Exploration Project. These studies were based on management recommendations from HROA's and from the YG Heritage Resources Unit. The objectives of the HRIAs were to:

- Document above- and below-ground heritage resources identified in the Project area.
- Assess and evaluate the degree of potential impacts to recorded heritage resources in the Project area.
- Provide management recommendations for recorded heritage resources in the Project area.
- Ground-truth predicted areas of elevated heritage resources potential identified in the HROA that overlap with the ground disturbance footprint of the Project and Coffee Exploration Project.
- Attempt to confirm locations of Yukon Historic Sites Inventory registered historic sites.

HRIA results included the following:

- The discovery of new heritage resource sites.
- Management recommendations were provided for new heritage sites.
- Generally, no further assessment work was recommended in areas of heritage potential that were ground-truthed and found to have no heritage resource sites. This generally meant that the Proponent could go ahead with ground disturbing activities as long as a Chance Find Protocol (see Section 6.7) was in place.
- Confirmation of locations of Yukon Historic Sites Inventory registered historic sites.

HRIA management recommendations for new heritage sites generally included the following:

- Flag the new heritage resource site with a 30 m avoidance buffer.
- Avoidance of the new heritage resource sites was recommended.
- If avoidance of the new heritage resource site was not feasible further mitigative study was recommended.
- Further mitigative study was completed for heritage sites where avoidance was not feasible. Based on the outcomes of heritage resource site delineation via shovel testing, the HRIA recommended the reduction of specific heritage site buffers near infrastructure.

Recent HRIAs have expanded upon the knowledge base of previous HRIAs and proposed updated management recommendations. Some recommendations (e.g., SDR) from earlier HRIAs were not selected as the preferred mitigative technique based on the outcomes from consultation with affected First Nations. Subsequent HRIAs were aligned with this consultation. Additionally, based on earlier HRIA recommendations, recent HRIAs have completed additional mitigative studies via shovel testing to delineate heritage sites for which avoidance was not feasible. The management recommendations for these sites have been updated from earlier HRIAs to reflect the most recent work.

Appendix B summarizes the most up-to-date HRIA results and management recommendations for each known heritage site in the Project and Coffee Exploration Project area. No heritage sites are anticipated to be impacted following the implementation of the HRIA mitigation measures, including, but not limited to avoidance through NAR realignment, construction monitoring, and hand-clearing of vegetation.

4.3 Other Heritage Assessments

Other non-Project related archaeological assessments have been completed near the Project and Coffee Exploration Project including: archaeological impact assessments (AIAs), archaeological surveys, pre-field reconnaissance, HROAs, and heritage resources inventories.

If the Project or Coffee Exploration Project extends into areas not previously evaluated for heritage resources, a heritage resource assessment, as outlined in Sections 4.1 and 4.2, will be necessary. This assessment includes a review of any prior assessments conducted in the vicinity of the new area.

4.4 Heritage Resources Inventory

Four HROAs and eleven HRIAs have been completed to date for the Project and Coffee Exploration Project (see Sections 4.1 and 4.2). The results of these heritage resource assessments specific to the Project and the Coffee Exploration Project has resulted in numerous heritage resource sites identified to date. These resources include precontact lithic sites, precontact campsites, faunal sites, and one plane wreck. In addition to the documented heritage resources, several structures recorded in the Yukon Historic Sites Inventory were confirmed to be present, while others could not be located, possibly due to inaccurate inventory information or due to placer mining disturbance.

The types of heritage resource sites likely to be found in the Project and Coffee Exploration Project consist of small, short-term camps related to hunting, trapping, or travel activities. Sites resulting from these activities are normally expressed as small lithic scatters; however, local environmental and geological conditions such as aridity and calcareous sediments may support the preservation of some organic materials. The remains of precontact structures are not expected to be readily visible given short-term settlement occupation patterns and previous forest fires, but there may be evidence of cultural depressions.

The type of structures that are recorded in the Yukon Historic Sites Inventory and found within the Project area are typically related to abandoned cabins, shelters, caches, other man-made structures and equipment that are greater than 45 years in antiquity.

Appendix B provides a table of all known heritage sites within the Project footprint and Coffee Exploration Project, to date. Additionally, this table contains a description of each site and management recommendations for each site. Appendix B will be updated annually, incorporating any Chance Finds or newly identified heritage sites to ensure it remains current, and will be submitted with the Annual Report (see Section 8.0).

5.0 TRADITIONAL KNOWLEDGE REPORTS

The Coffee Creek area's current traditional land and resource use value is intrinsically linked to the cultural and heritage values that it also represents for all First Nations (Bates *et al.* 2014). Existing traditional land and resource use by TH, SFN, FNNND and WRFN is summarized below based on publicly available information, information provided by First Nations, or through consultation. This information reflects the inseparable nature of each First Nation's culture, heritage, and other traditional land and resource uses. The traditional land and resource uses described herein should not be considered as an exhaustive description, rather a description based on available and provided information.

5.1 Tr'ondëk Hwëch'in

TH have used their Traditional Territory for habitation-related purposes for thousands of years (Ecofor 2012). Coffee Creek was an important gathering place for TH in the past (Yukon River CFA and TH 1997). Coffee Creek continues to be of cultural and spiritual importance to TH, as it is known as a birth and burial place for many citizens. Several contributors to the *Coffee Creek Traditional Knowledge Survey* recounted the names of friends and family who are buried at Coffee Creek (TH 2012).

5.2 Selkirk First Nation

Coffee Creek was historically a place where SFN ancestors would gather and live (Easton *et al.* 2013, Yukon River CFA and TH 1997, TH 2012). One SFN citizen remembered a village that used to exist in the Coffee Creek area before the highway was constructed (Yukon River CFA and TH 1997). Elders from SFN described how many people lived at Coffee Creek in the 1930s, since at the time it was home of an active trading post (TH 2012).

In the past, SFN people used to gather and conduct cultural and spiritual activities such as potlaches at Coffee Creek (Easton *et al.* 2013, TH 2012). This area also represents cultural and spiritual value because it is known as a resting place for some SFN citizens. Two SFN Elders shared that their grandmother and other community members are thought to be buried at Coffee Creek (Easton *et al.* 2013, TH 2012).

5.3 First Nation of Na-cho Nyäk Dun

Traditional use activities conducted across FNNND Traditional Territory are of cultural importance, in part because of the socio-cultural ties that they support; this includes the harvesting of traditional foods, as well as the act of sharing and consuming them (DPRA 2010). Traditionally, FNNND people would travel long distances in accordance with the seasonal round to conduct different subsistence activities (InterGroup Consultants Ltd. 2009). Through harvesting traditional foods, FNNND citizens spend time on the land with their family and community members, practicing and sharing TK and skills (DPRA 2010). Spending time on the land is key to the transmission of TK and to the development of healthy communities (DPRA 2010).

5.4 White River First Nation

The mouth of Coffee Creek is a habitation area where WRFN ancestors are known to have lived and gathered (Bates *et al.* 2014, Easton *et al.* 2013, TH 2012, Yukon River CFA, and TH 1997), including both permanent dwelling sites and temporary camping locations (Bates *et al.* 2014). The cultural significance of the Coffee Creek area to WRFN is reflected by all the site-specific values associated with this specific area (Bates *et al.* 2014). Cultural activities are known to have taken place in the Coffee Creek area. These cultural activities include potlaches, ceremonies, and other events (Bates *et al.* 2014, Easton *et al.* 2013). The Coffee Creek area is considered by WRFN to have spiritual value because this was a birth and burial place for some WRFN ancestors, as well as other activities such as marriage and baptism ceremonies (Bates *et al.* 2014).

6.0 HERITAGE RESOURCES PROTECTION MEASURES

The Government of Yukon requires that potential effects to heritage resources be mitigated before ground clearing activities. This section outlines mitigations to protect known heritage resources within the Project and Coffee Exploration Project footprint prior to and during ground clearing activities. The mitigation measures include procedures to avoid impacts to heritage resources. Mitigation measures proposed below are in accordance with the *Historic Resources Act*, Archaeological Sites Regulations, Land Use Regulations, Resource Road Regulations and Quartz Mining Land Use Regulations. All heritage resource mitigations will be conducted prior to any ground disturbance activities, although some may also require monitoring by an archaeologist or Environmental Department personnel during or after these activities.

6.1 Future Heritage Resource Overview Assessments

Between 2010 and 2020, HROAs were completed for the Project and the Coffee claim block, which (see Table 4-1). Based on the coverage of these assessments, no further HROAs are required unless there are additional claims added to the Coffee Exploration Project or alignment change to the NAR outside of the HROA assessed area.

Appendix D provides a figure, compiled from the four completed HROAs, that identifies areas of elevated heritage potential within the Coffee Exploration Project which have not yet undergone a HRIA (refer to Section 6.2 for further discussion on HRIAs). The entire Project, including NAR alignment (65 m to either side of the road centreline), has had an HROA and HRIA completed.

6.2 Future Heritage Resources Impact Assessments

Completed HRIAs for the Project and the Coffee Exploration Project are summarized in Table 4-1. HRIAs for the Project footprint, as submitted for licensing applications, are complete, and corresponding site-specific mitigation measures are included in this Plan (refer to this section and Appendix B). If the Project footprint changes, additional HRIAs may be required prior to any surface disturbance in newly affected areas that were not previously assessed. In such cases, the Proponent, in collaboration with the Project Archaeologist, will compare the revised Project footprint with the completed HRIAs and the mapped areas of elevated heritage resource potential (see Table 4-1, this section, and Appendix B) to determine whether the new footprint overlaps with any unassessed areas and thus require a HRIA. It should be noted that due to exploration activity in the Coffee claim block, that in general that areas of potential immediately outside of the Project footprint have already undergone an HRIA.

HRIAs have not yet been completed for all areas within the Coffee Exploration Project, as only areas where surface disturbance has been proposed have undergone impact assessment. This approach is consistent with Yukon heritage management regulatory requirements, which focus on assessing areas where ground disturbance is planned to be undertaken. A HRIA must be completed prior to any ground-disturbing activities in areas identified as having elevated heritage resource potential. Appendix D provides a figure identifying polygons of areas of potential within the Coffee claim block that have not yet been subject to a HRIA; these areas remain undisturbed and will require assessment should future exploration or development activities be proposed.

6.3 Heritage Site Avoidance with Heritage Site Protection Buffer

For heritage resources identified overlapping or in close proximity to Project or Coffee Exploration Project related activities, the initial mitigative measure will be avoidance of these resources. Specifically, a 30 m heritage site protection buffer will be established around the resource, and no ground-clearing activities may occur within this buffer. With this measure in place, no further heritage mitigation is recommended for these sites.

There are several heritage resources within the existing right-of-way of the proposed NAR alignment (see Appendix B) in which the protection buffer overlaps into the existing right-of-way. To protect these sites along the existing right-of-way, the Proponent is proposing to avoid any ground disturbing work within the heritage site buffer where it overlaps with the existing right-of-way. Only vegetation clearing activities are proposed to take place within the existing right-of-way and overlapping heritage site protection buffer.

Heritage resources at the Project and Coffee Exploration Project will have their heritage site protection buffers clearly marked in the field using dedicated flagging tape reserved for that purpose. In some cases, physical barriers may also be installed where additional protection is warranted (see Section 6.6). All Project and Coffee Exploration Project employees, contractors, and agents will be instructed to avoid these areas at all times (see Section 7.0). Monitoring during construction activities and ongoing inspections are described in Sections 6.8 and 6.9.

6.4 Systematic Data Recovery

If complete site avoidance is not feasible, potential adverse effects on heritage resources may be mitigated through the process of SDR. At this time, no heritage resources within the Project or Coffee Exploration Project area have been identified as requiring mitigation through SDR; however, the process is described below should this be required in the future for heritage resource that may be discovered during Project or Coffee Exploration Project activities.

SDR is a process that is used to recover archaeological artifacts or other cultural heritage resources from a site that is going to be impacted by development or construction. Prior to embarking on an SDR project, the Proponent will initially evaluate its necessity. If a significant amount of time has elapsed between the initial assessment and the current footprint of activities, the Proponent will reevaluate the need for the SDR to ensure its continued relevance. This assessment will typically involve reviewing the Project engineering and ensuring that all changes to Project design have been considered to minimize any potential impact on the heritage site.

Once it has been determined that a SDR project is necessary, the Proponent will engage with affected First Nations to discuss the Project design and the SDR process for the heritage site. The YG Heritage Resources Unit and First Nations will be invited to participate in the SDR planning process, including but not limited to: the development of research questions related to the sites significance or First Nations interest in the site; the identification of appropriate sampling and data collection methods; the analysis, interpretation, and presentation of the data; and personnel involved in the study. It is important to note that no ground disturbing work (even further archaeological study) is to be performed within a heritage site until the necessary permissions have been sought with First Nations and the YG Heritage Resources Unit.

Throughout this process, the Proponent will work collaboratively with First Nations to ensure that the SDR project is conducted in a way that is respectful of their interests and the cultural heritage of the site. Where possible, creative solutions will be sought to preserve the heritage resource to the extent possible. This might involve the use of innovative technologies to minimize the need for invasive excavation techniques, or the development of mitigation measures that allow for the preservation of key features or artifacts on the site.

Overall, the goal of engaging affected First Nations in the SDR planning process is to ensure that the Project and Coffee Exploration Project are carried out in a manner that considers the cultural significance of the site and prioritizes the concerns and perspectives of affected First Nations in the process. The Proponent aims to collaboratively develop the Project and Coffee Exploration Project in a way that balances the interests of both affected First Nations and the Proponent, while also helping to protect heritage sites for future generations.

Should SDR studies be required, they will be conducted to territorial standards under the authority of a Class 2 permit under the Yukon *Historic Resources Act*, Yukon Archaeological Site Regulations and in adherence to affected First Nation heritage acts whose traditional territories may be impacted at the time the work is completed (see Section 2.0). A SDR program is tailored to the individual Project effect and to the individual archaeological and historical resource, and commonly involves:

- Scientific excavation and recovery of some or all portions of the resources to be affected.
- Collection and analyses of artifacts, faunal remains, botanical remains, and other archaeological and historical remains.
- Collection and processing of samples for radiocarbon dating when possible.
- Completion of other relevant specialized analytical processes (e.g., geochemical analyses of stone tools, residue analysis).
- Cataloguing of all collected artifacts and their subsequent curation in an approved facility.

Where SDR excavations are carried out, a final permit report is required by the YG Heritage Resources Unit to document collected data and the results of all analytical processes. This report will be provided to First Nations and regulators.

Obtaining the necessary permissions from First Nations and regulatory bodies is only part of the SDR process. Prior to executing an SDR, it is essential that the site Environmental Department brief the Corporate Sustainability and External Relations team before making any changes to heritage resource sites. This step is vital to ensure the site's Environmental Department adheres to the broader heritage protection policies established by the Proponent's company. Additionally, no personnel employed by the Proponent can give permission to alter a heritage resource site without the consent of the affected First Nation whose traditional territory the heritage resource is in and the YG Heritage Resources Unit.

6.5 Heritage Site Area Verification and Heritage Protection Buffer Refinement

In some locations where complete avoidance of heritage sites could not be achieved due to terrain or engineering constraints, the Proponent, in collaboration with affected First Nations, has developed an alternative mitigation strategy to SDR. This approach was developed in response to input from affected First Nations indicating that SDR excavations were not always the preferred mitigative measure when

complete avoidance could not be achieved, and where it was not feasible for the Proponent to completely avoid the affected heritage sites.

Under the Quartz Mining Land Use Regulation and the Land Use Regulation, all recorded archaeological or heritage sites are automatically protected by a 30 m buffer zone within which no land-altering activities are permitted unless specifically authorized by the Chief of Mining Land Use or an inspector. This buffer is applied as a standard protective measure during heritage assessments and Project planning to prevent inadvertent disturbance of heritage resources. The buffer itself is a management zone surrounding the formal heritage site area and may not contain archaeological materials but serves to protect the integrity of the site from indirect effects of development. Although the Resource Roads Regulation does not explicitly reference this buffer, the Proponent has continued to apply the same 30 m standard buffer across all Project and Coffee Exploration Project components as a precautionary and consistent best-practice approach.

In cases where complete avoidance was not feasible, and SDR was not the preferred approach, the Proponent adopted a strategy combining Project footprint adjustments with intensive shovel testing within the overlap zones of formal heritage site areas and their 30 m avoidance buffers. This work involved systematic shovel testing of the surrounding buffer zones to verify that no additional artifacts or heritage materials were present and allowed for the refinement of the boundaries of the known heritage sites by confirming their precise extents. The objective of this work was to enable the reduction of the standard 30 m buffer zones, based on an improved understanding of the exact locations and limits of the heritage resources, and to confirm that the Project could proceed using reduced buffers without adverse effects to heritage sites.

This approach was developed specifically for sites along the NAR, in collaboration with affected First Nations, and reflects a culturally informed alternative to SDR where complete avoidance is not feasible. For any future discoveries or heritage sites identified during Project or Coffee Exploration Project development, the mitigation approach will continue to follow a hierarchy of responses: (1) avoidance; (2) SDR and (3) site area verification and buffer refinement where appropriate. The selection of a mitigation approach will be developed collaboratively to ensure that heritage protection measures are respectful, effective, and aligned with First Nation interests and regulatory requirements.

Additional administrative and operational mitigations will be implemented to ensure that no Project related disturbance occurs beyond the areas authorized for disturbance. These additional controls are described in the following sections: Section 6.6 Physical Barriers and Heritage Protection Buffer Marking, Section 6.8 Construction Monitoring, Section 6.9 Inspections, and Section 6.10 Annual Review of Ground Clearing Activities and Heritage Resource Site Locations.

6.6 Physical Barriers and Heritage Protection Buffer Marking

Physical barriers or clearly marked heritage protection buffers will be established around recorded heritage sites in areas where nearby ground disturbance will occur to prevent unauthorized entry, equipment operation, or inadvertent disturbance. These measures are intended to protect both the formal site areas where heritage sites are known to occur, and the surrounding protective buffers that serve as management zones.

Where reduced buffers have been approved through consultation with affected First Nations and regulators, physical barriers (e.g., fencing, snow fencing, timber structures, natural berms or other barricades) will be

installed to clearly delineate the limits of the authorized work area and to prevent inadvertent encroachment into the refined buffer area. In areas where the standard 30 m buffer remains in place, high-visibility heritage buffer zone marking (such as flagging, no work signage, or temporary fencing) will continue to be used to define the no-work area surrounding the site. The type of marking or barrier used will be determined based on site-specific conditions, including terrain, visibility, seasonality, and proximity to active construction zones.

All heritage protection buffers, whether delineated with physical barriers or marked with flagging, will be clearly identified on construction drawings and field maps and their locations communicated by the Environmental Department to site personnel during pre-construction briefings.

These measures will remain in place until all nearby construction or ground disturbance activities have been completed. Construction monitoring and inspections are further described in Sections 6.8 and 6.9, respectively.

The objective of this measure is to provide visible, durable, and context-appropriate protection for heritage resources while maintaining flexibility to accommodate varying field conditions and construction logistics.

6.7 Chance Find Protocol

A Chance Find Protocol has been prepared to provide on-site Project and Coffee Exploration Project personnel with the steps to follow in the event that unrecorded archaeological, historical, and paleontological resources are encountered during any Project or Coffee Exploration Project activities. The Chance Find Protocol provides relevant individuals with descriptive information on cultural materials, archaeological and paleontological deposits commonly found in the Yukon, and a protocol to identify these materials, communicate the find(s) to appropriate parties, and to help avoid unmitigated disturbance to archaeological, historical, and paleontological resources.

6.7.1 Chance Find Protocol; Heritage Resources including Paleontological Resources, Other Than Human Remains

If a Chance Find of a heritage resource is discovered, the following activities will take place:

- 1) Stop ground disturbing work and/or stop work that could disturb the Chance Find and surrounding area of at least 30 m.
- 2) Protect the Chance Find with a 30 m buffer (place flagging tape and write do not enter, or place other barriers).
- 3) Fill out this Chance Find Form, including but not limited to the following:
 - a. Date and time
 - b. Location of Chance Find
 - c. Description of the find including size and extent of the site
 - d. Photos of the Chance Find and surrounding area (at least 1080 pixels)
 - e. Access to the Chance Find
 - f. Identify if the Chance Find is in danger of being lost or damaged by the environment

- 4) Inform the Environmental Manager as soon as possible.
- 5) Leave the Chance Find – Heritage Resource in place unless directed otherwise by the Environmental Manager, who will obtain guidance from the YG Heritage Resources Unit and affected First Nations.
- 6) Wait for further instructions.
- 7) Under no circumstances is the information gathered for the Chance Find to be shared with anyone other than the Environmental Manager (or designate).
- 8) Under no circumstance are Chance Finds to be collected for personal use.

The above information will be reported to the Environmental Manager who will then contact affected First Nation and the YG Heritage Resources Unit for further directions regarding the heritage resource. The Project Archaeologist will additionally be notified of the find. Depending on the nature of the situation, the affected First Nations and the YG Heritage Resources Unit will make recommendations on how to proceed. Possible actions may include:

- a. If possible, move Project activities to an alternate location.
- b. If after a description of the resource or situation is provided by the Proponent and no further concerns are identified by the YG Heritage Resources Unit, including paleontology, or the affected First Nation, activities may continue as planned.
- c. A field visit by an archaeologist may be recommended to further identify appropriate management options, for example avoidance of resources, salvage operations or site protection.
- d. If protection of the resource is possible and immediate salvage actions are not required, specific mitigations may be developed to recover data and information under the direction of the YG Heritage Resources Unit and affected First Nations.
- e. The Proponent shall set aside and protect fossils that are unearthed and the proponent shall report these findings to Yukon Palaeontology.
- f. If mummified fossil remains, with intact flesh, are discovered, the Proponent shall immediately contact Yukon Palaeontology.

Consistent with the approach for artifacts identified during an HRIA conducted under a Class 2 permit, the Proponent does not determine where artifacts are curated. Following the discovery of a Chance Find, the Proponent will complete the necessary initial reporting and report this to affected First Nations and the YG Heritage Resources Unit. Subsequent management of the Chance Find will follow the process established by the affected First Nations and the YG Heritage Resources Unit, in accordance with their respective legislation or internal protocols.

6.7.2 Chance Find Procedure Protocol; Emergency Management of Human Remains

If a Chance Find of human remains are discovered, the following activities will take place:

- 1) Stop ground disturbing work and/or stop work that could disturb the Chance Find and surrounding area of at least 30 m

- 2) Protect the Chance Find with a 30 m buffer (place flagging tape and write do not enter, or place other barriers)
- 3) Fill out this Chance Find Form, including but not limited to the following:
 - a. Date and time
 - b. Location of Chance Find
 - c. Description of the find including size and extent of the site
 - d. Photos of the Chance Find and surrounding area (1080 pixels)
 - e. Access to the Chance Find
 - f. Identify if the Chance Find is in danger of being lost or damaged by the environment.
- 4) Inform the Environmental Manager as soon as possible
- 5) Leave the Chance Find – Human Remains in place
- 6) Wait for further instructions. No one shall document, touch, move or take any sort of action with the human remains until approved to do so by the Royal Canadian Mounted Police (RCMP).
- 7) Under no circumstances is the information gathered for the Chance Find to be shared with anyone other than the Environmental Manager (or designate).
- 8) Under no circumstance are Chance Finds to be collected for personal use.

The above information will be reported to the Environmental Manager who will then contact RCMP. The Environmental Manager will also contact the affected First Nation whose traditional territory the resource was located, and the YG Heritage Resources Unit.

As per the Guidelines Respecting the Discovery of Human Remains and First Nation Burial Sites in the Yukon (YG 1999), depending on the nature of the situation, the RCMP, affected First Nations, and YG Heritage Resources Unit will make recommendations on how appropriate courses of action depending on whether the remains are found in an archaeological/historical context (i.e., in association with artifacts) or not. If the site is deemed to be criminal or forensic in nature, then the RCMP/Coroner will take responsibility of the site.

If the remains are deemed archaeological, all work will cease until the affected First Nation has been contacted and is able to conduct appropriate cultural work.

Due to the sensitive nature of the Chance Find of Human Remains information (i.e. photos, location of Chance Find) it is important to note that these reports will be handled with discretion to ensure they are not distributed other than to the appropriate parties.

Investigation and reporting of human remains will follow the procedures outlined in the Guidelines Respecting the Discovery of Human Remains and First Nation Burial Sites in the Yukon (YG 1999).

6.8 Construction Monitoring

Construction monitoring will be implemented to ensure that all identified heritage resources are protected during Project construction activities, particularly in areas where surface area disturbance is planned immediately adjacent to heritage site protection buffers. Heritage sites and their associated protection buffers will be clearly identified on construction maps and field drawings prior to the commencement of any ground-disturbing activities. The heritage protection buffers will be physically marked in the field using flagging tape or other approved methods, as described in Section 6.6.

The specific construction monitoring procedures that will be followed will depend on the heritage site location and whether their protection buffer has been modified:

- For sites where surface disturbance is proposed within 100 metres of the standard 30-metre heritage protection buffer, an Environment Department representative (or qualified designate) will confirm the flagging and re-flag the site, if necessary, within seven days prior to construction activities.
- For sites located in the existing NAR right-of-way, and for which the existing buffer overlaps in the existing right-of-way, only vegetation clearing (hand falling) will take place, and construction monitoring will be undertaken by a representative from the Environment Department (or a qualified designate) to verify that avoidance measures are properly implemented and that no surface area clearing occurs into heritage protection buffer.
- For sites located in new sections of the NAR right-of-way, and for which a refined buffer has been approved, construction monitoring will be undertaken by a Qualified Professional (e.g., Archaeologist holding a Class 2 permit, or other appropriately qualified designate). The Qualified Professional will be present to confirm that mitigation measures are effective and that no direct or indirect impacts occur in the refined buffer area.

Photo documentation will be routinely conducted as part of construction environmental monitoring to record the condition of flagged or protected areas and to confirm that avoidance measures remain intact and effective throughout construction.

If at any time during construction a previously unrecorded heritage resource or suspected heritage material is discovered, the Chance Find Protocol (Section 6.7) will be immediately implemented. All work in the vicinity of the find will cease until the required notifications and assessments have been completed, and direction has been received from the YG Heritage Resources Unit and the affected First Nations.

6.9 Inspections

The Environmental Department, or qualified designate, is committed to conducting quarterly inspections of heritage sites situated within the mine Project footprint, along the NAR and exploration areas where surface-disturbing activities are occurring. These inspections are designed to verify the continued demarcation of heritage sites and their protection buffer boundaries. Inspections will confirm that flagging or other marking materials remain visible, intact, and in good condition, and that no unauthorized disturbance has occurred within the protection areas. Any deficiencies identified during inspections will be documented and summarized in the Annual Report (see Section 8.0). Minor deficiencies, such as flagging or physical barriers requiring maintenance, will be noted and promptly addressed to maintain the integrity of protective measures. If damage or surface disturbance is observed within a heritage site or its protection buffer, an

investigation will be undertaken by the Environment Department. The YG Heritage Resources Unit and affected First Nations will be notified of the incident, and the Proponent will share the investigation findings and collaborate with them to determine appropriate mitigation measures to prevent further impacts to the site.

The implementation of inspection measures will be flexibly tailored to the specific circumstances and available technologies to ensure the most effective protection of heritage sites. The Proponent's priority is to adapt inspection strategies as needed to safeguard heritage resources. This could mean the exact inspection approach may vary depending on the availability of and feasibility of innovative monitoring techniques (i.e., drones, remote operated cameras, community-based monitoring etc.)

6.10 Annual Review of Ground Clearing Activities and Heritage Resource Site Locations

Annually, the Environmental Department will review the upcoming year's plans for ground disturbing work at the Project and Coffee Exploration Project, comparing them with the heritage site locations to ensure they do not overlap. The review aims to confirm that ground disturbing activities avoid heritage resource sites. It will be the responsibility of all Project and Coffee Exploration Project departments to provide their annual ground disturbing work plans to the Environmental Department for review and approval against the heritage resource site locations and areas of elevated heritage resource potential which have not yet undertaken a HRIA. If work-clearance plans intersect with confirmed heritage resource sites, the Environmental Department will notify the operational department that work plans must be adjusted to avoid the site. If work-clearance plans overlap with areas of heritage potential, an HRIA must be completed before any work can proceed in the area of heritage potential. Should a HRIA be conducted, it is possible that heritage resources might be discovered in the assessed area. In such cases, these areas will need to be avoided for any activities that disturb the ground.

To aid in this process, the Environment Department will review Appendix B on an annual basis and ensure all known heritage resource sites at the Project and Coffee Exploration Project are listed in the Appendix. Additionally, an annual figure will be developed that includes the Project and Coffee Exploration Project and heritage resource sites. This figure will assist in internal Project and Coffee Exploration Project planning and communication.

6.11 Summary of Heritage Sites Requiring Active Management

As described in Section 4.2 and Appendix B, no heritage sites are anticipated to be impacted following the implementation of the HRIA recommended protective measures as described throughout Section 6.0. Appendix B lists 15 specific heritage sites for which a monitor from the Environmental Department, and 5 sites for which an Archaeologist or other Qualified Professional, should be present during ground clearing activities (see Section 6.8). The recommendation for monitoring of these sites is based on HRIA results and recommendations, which considered the proximity of the heritage sites to the existing road and NAR right-of-way, or other Project location (e.g., Coffee Exploration Project, Coffee Camp, or Mine Site).

7.0 EMPLOYEE AND CONTRACTOR AWARENESS TRAINING

Project-specific orientations are required for all new employees and contractors working on the Project and Coffee Exploration Project. The HRPP will be included as part of the Project orientation, and the orientation will cover:

- Definition and examples of a heritage resource
- Overview of known heritage resources within the Project and Coffee Exploration Project
- Chance Find Procedure

Personnel engaged in ground clearing activities will undergo specialized training to enhance their ability to identify and protect heritage resources. This additional training program may encompass various components, such as guidance on recognizing heritage resources, the distribution of informative handbooks outlining the identification of heritage sites (see Section 2.2), and the provision of maps that clearly indicate the locations of heritage sites relative to their work areas. The training program will be documented in a Standard Operating Procedure (SOP) and will include the sensitivities and confidentiality around heritage resources.

In addition to orientations and specialized training, an annual awareness refresher summarizing key requirements for heritage protection will be distributed from the Environmental Department to all departments at the Project and Coffee Exploration Project.

The Health and Safety (H&S) or Environment Department will retain copies of the employee and contractor sign off forms following completion of the training.

8.0 ANNUAL REPORTING

The Annual Report, required under both the Quartz Mining Licence and the Type A Water Use Licence, will provide a summary of heritage resource management activities for the reporting period. As part of annual reporting, the HRPP will be reviewed to ensure it remains current and accurate. If any substantive changes to the Plan are required, the revised version will be provided to affected First Nations for review and subsequently submitted to Yukon Government for approval prior to implementation.

Appendices A through D may be reviewed and updated annually to maintain accuracy and completeness. Updates may include revisions to the Table of Concordance (Appendix A); the addition of new chance finds or heritage sites (Appendix B) along with the protection measures as per recommendations from the Project archaeologist, affected First Nations and YG Heritage Resources Unit; updates to the contact list (Appendix C); and revisions to the figure identifying areas of heritage potential within the Coffee Exploration Project (Appendix D). Any such updates will be submitted with the Annual Report under the Quartz Mining Licence and Type A Water Use Licence for review and record-keeping purposes.

Any deficiencies identified during inspections will be documented and summarized in the Annual Report (see Section 6.9). This process ensures that the HRPP remains current, transparent, and aligned with regulatory requirements and best practices for heritage resource protection in the Yukon.

9.0 REFERENCES

- Bates, P., DeRoy, S., The Firelight Group, with White River First Nation. 2014. White River First Nation Knowledge and Use Study (For the Proponent)
- Bennett, T. (Ecofor). 2017. Heritage Resource Impact Assessment: Kaminak Gold Corporation/ Goldcorp Inc. Coffee Creek Mine Access Road (16-13ASR). Consultant report prepared for Kaminak Gold Corporation/Goldcorp Inc.
- Bennett, T. (Ecofor). 2018. Heritage Resource Impact Assessment: Goldcorp Coffee Gold Project Northern Access Route Final Report (17-15ASR). Consultant report prepared for Kaminak Gold Corporation/Goldcorp Inc.
- Bennett, T. (Ecofor). 2019. Heritage Resource Impact Assessment: Coffee Gold Project Communication Tower Sites on Henderson Dome and King Solomon Dome Final Report (18-24ASR). Consultant report prepared for Goldcorp Inc.
- Bennett, T. (Ecofor). 2020a. Heritage Resource Overview Assessment: Dan Man Claims. Consultant report prepared for Goldcorp Kaminak Ltd.
- Bennett, Tim (Ecofor). 2020b. Heritage Resource Overview Assessment: Coffee Exploration Project Unassessed Claim Areas 2020. Consultant report prepared for Goldcorp Kaminak Ltd.
- Bennett, T. (Ecofor). 2020c. Heritage Resource Impact Assessment: Coffee Exploration Project 2019 HRIA of Previously Unassessed Localities in the Claim Area Final Report (19-23ASR). Consultant report prepared for Goldcorp Kaminak Ltd.
- Bennett, T. (Ecofor). 2021. Heritage Resource Impact Assessment: Coffee Exploration Project and Dan Man Claims 2020 HRIA of Previously Unassessed Areas Final Report (20-16ASR). Consultant report prepared for Goldcorp Kaminak Ltd.
- Bennett, T. (Ecofor). 2023. Heritage Resource Impact Assessment: Coffee Exploration Project 2023 Interim Report (23-34ASR). Consultant report prepared for Newmont Corp.
- Bennett, T. (Ecofor). 2025a. Heritage Resource Impact Assessment: Coffee Gold Project Coffee Creek Terrace Final Report (24-37ASR). Consultant report prepared for Newmont Corp. March 27, 2025.
- Bennett, T. (Ecofor). 2025b. Heritage Resource Impact Assessment: Coffee Gold Project Northern Access Route Barge Landing Sites Final Report (24-33ASR). Consultant report prepared for Newmont Corp. March 31, 2025.
- Easton, N.A., Kennedy, D., and R. Bouchard. 2013. WRFN: Consideration of the Northern Boundary (09 September 2013 Draft Report)
- Ecofor. 2012. Appendix 31: Socio-economic Assessment, Brewery Creek Property. Prepared for Golden Predator Corp.

- DPRA Canada. 2010. Eagle Gold Project Socio-economic Baseline Report, Final Report. Prepared for Victoria Gold Corporation
- Gotthardt, R., and C. Thomas. 2007. Handbook for the Identification of Heritage Sites and Features. Yukon Tourism and Culture. <http://www.tc.gov.yk.ca/pdf/Heritage_Handbook_2007.pdf>.
- Government of Canada. 1993. Umbrella Final Agreement Between the Government of Canada, the Council for Yukon Indians and The Government of the Yukon. Electronic document accessed October 12, 2023 at <https://www.rcaanc-cirnac.gc.ca/eng/1297278586814/1542811130481>
- InterGroup Consultants Ltd. 2009. Socio-Economic Setting for the Proposed Mayo Hydro Enhancement Project (Mayo B). Submitted to Yukon Energy (February 2009).
- Kristensen, T, and Heffner, T. (Matrix). 2010. Heritage Resource Overview Assessment and Preliminary Field Reconnaissance of Coffee Gold Project for Kaminak (10-23ASR). Prepared for Kaminak Gold Corporation. December, 2010.
- Kristensen, T, and Heffner, T. (Matrix). 2012. Heritage Resource Impact Assessment of the Coffee Cold Project for Kaminak (11-03ASR). Consultant report on file with the Yukon Heritage Branch. Prepared for Kaminak Gold Corporation. July, 2012.
- Stantec Consulting Ltd. (Stantec). 2017. Heritage Resources Overview Assessment for a Proposed Access Road Corridor to the Coffee Property. Prepared for Kaminak Gold Corporation, now a wholly owned subsidiary of Goldcorp Inc. March 21, 2017.
- Tr'ondëk Hwëch'in (TH). 2012. Coffee Creek Traditional Knowledge Survey, Final Report. A. Winton, December 2012.
- Tr'ondëk Hwëch'in (TH). 2016a. Tr'ondëk Hwëch'in *Heritage Act*.
- Tr'ondëk Hwëch'in (TH). 2016b. Best practices for Heritage Resources.
- Yukon River Commercial Fishing Association (CFA), and Tr'ondëk Hwëch'in (TH). 1997. Summary of Streams in the Tr'ondëk Hwëch'in Traditional Area: A Search for Candidate Streams to Support a Program based on a Klondike Area Central Incubation/Outplanting Facility.
- Yukon Water Board and Yukon Energy, Mines and Resources. 2013. Plan Requirement Guidance for Quartz Mining Project. August 2013. Whitehorse, Yukon.
- Yukon Government (YG). 1999. Guidelines Respecting the Discovery of Human Remains and First Nation Burial Sites. <<https://yukon.ca/sites/default/files/tc/tc-guidelines-discovering-human-remains-first-nation-burial-sites-yukon.pdf>>
- Yukon Government (YG). 2002. Yukon *Historic Resources Act*, RSY 2002, c 109 <http://www.gov.yk.ca/legislation/acts/hire_c.pdf>.
- Yukon Government (YG). 2003a. Archaeological Sites Regulation, YOIC 2003/73, <<https://canlii.ca/t/kg1d>>

Yukon Government (YG). 2003a. Yukon *Quartz Mining Act*.
<http://www.gov.yk.ca/legislation/acts/qumi_c.pdf>.

Yukon Government (YG). 2003b. Land Use Regulation, YOIC 2003/51. <https://canlii.ca/t/53rj2>

Yukon Government (YG). 2003c. Yukon Territorial *Lands Act*.
http://www.gov.yk.ca/legislation/regs/oic2003_051.pdf

Yukon Tourism and Culture. 2010. Yukon Mineral Exploration Best Management Practices for Heritage Resources. Yukon Tourism and Culture.
<http://www.tc.gov.yk.ca/pdf/Mineral_Exploration_BMP_for_Heritage_Resources.pdf>.

Yukon Tourism and Culture. 2014a. Best Management Practices for Burial Sites and Human Remains in Yukon. Yukon Tourism and Culture. <http://www.tc.gov.yk.ca/pdf/respecting_guidelines.pdf>.

Yukon Tourism and Culture. 2014b. Best Management Practices for Fossils at Yukon Placer Mines. Yukon Palaeontology Program, Heritage Resources Unit, Cultural Services Branch, Department of Tourism & Culture, Government of Yukon.
<http://www.tc.gov.yk.ca/pdf/FossilsAndPlacerMines_BMP.pdf>.

APPENDIX A

Heritage Resources Protection Plan Table of Concordance

Proponent Commitments - Heritage Resources Protection Plan

FSR Plan	Mitigation Name	Reference	Proponent Committed Mitigation	Management Plan	Commitment Incorporated	Section Location	Notes
Environmental Monitoring and Adaptive Management Plan (EMAMP)	Implement Monitoring Plans for Construction and Operation Phase Clearing and Ground Disturbance Activities	PP Table 32-2 (YOR 2017-0211-027-1)	If site avoidance is not feasible or practical, and SDR is not warranted because the heritage site has low scientific value, or SDR has occurred and monitoring is warranted, Goldcorp will mitigate Project interactions through a program of archaeological monitoring carried out during development.	Heritage Resources Protection Plan	Yes	Heritage Resources Protection Plan Section 6.5: Heritage Site Area Verification and Heritage Protection Buffer Refinement, Section 6.8: Construction Monitoring	
Heritage Resources PP	Avoid Known Archaeological and Historical Resources	PP Table 32-2 (YOR 2017-0211-027-1)	<ul style="list-style-type: none"> Avoid known heritage resources (including archaeological sites Kfvk-1, Kfvk-2, Kfvk3, and historical site Kfvk-4) through Project redesign. 	Heritage Resources Protection Plan	Yes	Heritage Resources Protection Plan Section 1.3: Incorporation of Traditional Knowledge and Consultation Feedback, Appendix B: Coffee Project and Coffee Exploration Project Known Heritage Sites and Protection Measures Summary Table	
Heritage Resources PP	Avoid Known Archaeological and Historical Resources		<ul style="list-style-type: none"> Implement avoidance buffers, using flagging tape or physical barrier, around current and future known heritage sites as described in the VC report and any heritage 	Heritage Resources Protection Plan	Yes	Heritage Resources Protection Plan Section 6.3: Heritage Site Avoidance with Heritage Site Protection Buffer, Appendix B: Coffee Project and Coffee Exploration Project Known Heritage Sites and Protection Measures Summary Table	
Heritage Resources PP	Avoid Known Archaeological and Historical Resources		<ul style="list-style-type: none"> Avoid historic period sites Hist 1 and Hist 4 within proposed ground disturbance zones. 	Heritage Resources Protection Plan	Yes	Heritage Resources Protection Plan Appendix B: Coffee Project and Coffee Exploration Project Known Heritage Sites and Protection Measures Summary Table	
Heritage Resources PP	Complete Heritage Impact Assessment for NAR and Changes to the Final Project Footprint	PP Table 32-2 (YOR 2017-0211-027-1)	<p>Prior to the start of Project Construction, Goldcorp will:</p> <ul style="list-style-type: none"> Complete the HRIA for the NAR and any changes to the final Project footprint. Provide recommendations for site-specific mitigation measures for any newly identified archaeological and historical resources in conflict with proposed ground disturbing or clearing activities for the Project. Undertake additional field work in 2017 to support preliminary heritage work on the NAR. The scope of 2017 field work will be determined after consultation with the Heritage Resources Unit, and will include additional stops and shovel testing at areas of archaeological potential and previously disturbed sites. Determine the scope of the HRIA in other areas on completion of the final footprint. 	Heritage Resources Protection Plan	Yes	Heritage Resources Protection Plan Section 4.0: Heritage Resources Assessments; Section 6.0: Heritage Resources Protection Measures, Appendix B: Coffee Project and Coffee Exploration Project Known Heritage Sites and Protection Measures Summary Table	
Heritage Resources PP	Consult on Appropriate Mitigation Measures	PP Table 32-2 (YOR 2017-0211-027-1)	Goldcorp will consult with First Nations and regulators regarding the choice of appropriate mitigation measures for all heritage resource sites that overlap with areas of proposed ground disturbance. This will include consideration of the remaining mitigation measures listed below in order of preference.	Heritage Resources Protection Plan	Yes	Heritage Resources Protection Plan Section 1.3: Incorporation of Traditional Knowledge and Consultation Feedback	
Heritage Resources PP	Implement Project-Specific Heritage Resources Protection Plan and Chance Find Protocol	PP Table 32-2 (YOR 2017-0211-027-1)	<p>Goldcorp will develop and implement a Heritage Resources Protection Plan, which will:</p> <ul style="list-style-type: none"> Provides methods for protecting known heritage resources (archaeological, historical, and paleontological) Includes a Chance Find Protocol CFP, which will: <ul style="list-style-type: none"> o provide those involved in ground-disturbing activities with a framework for identifying cultural materials and assists in avoiding unforeseen disturbance to heritage resources. o provides descriptive information regarding cultural materials commonly found in the region and those most likely to be encountered in the Project area. o Provide both documents will provide Project personnel with procedures on what to do and who to contact in the event that previously unrecorded heritage resources are inadvertently discovered during Project Construction or Operation 	Heritage Resources Protection Plan	Yes	Heritage Resources Protection Plan Section 4.0: Heritage Resources Assessments, Section 6.0: Heritage Resource Protection Measures, Section 6.7: Chance Find Protocol	
Heritage Resources PP	Implement Project-Specific Heritage Resources Protection Plan and Chance Find Protocol	PP Appendix 18-B (YOR 2017-0211-175-1)	<ul style="list-style-type: none"> Chance find protocols should be followed in the case that any heritage materials are encountered during the construction of the NAR. 	Heritage Resources Protection Plan	Yes	Heritage Resources Protection Plan Section 6.7: Chance Find Protocol	
Heritage Resources PP	Implement Project-Specific Heritage Resources Protection Plan and Chance Find Protocol		<ul style="list-style-type: none"> If any additional development areas are added to the project, then those new areas should also be reviewed for possible impact to heritage resources. 	Heritage Resources Protection Plan	Yes	Heritage Resources Protection Plan Section 6.2: Future Heritage Resources Impact Assessments	
Heritage Resources PP	Implement Project-Specific Heritage Resources Protection Plan and Chance Find Protocol		<ul style="list-style-type: none"> If chance finds are made, all work in the affected area should cease until staff at the Yukon Government Heritage Unit can be contacted for further direction. 	Heritage Resources Protection Plan	Yes	Heritage Resources Protection Plan Section 6.7: Chance Find Protocol	
Heritage Resources PP	Implement Project-Specific Heritage Resources Protection Plan and Chance Find Protocol		<ul style="list-style-type: none"> If avoidance of a site is not feasible, then further mitigative study is recommended. 	Heritage Resources Protection Plan	Yes	Heritage Resources Protection Plan Section 6.4: Systematic Data Recovery, Section 6.5: Heritage Site Area Verification and Heritage Protection Buffer Refinement	

Proponent Commitments - Heritage Resources Protection Plan

FSR Plan	Mitigation Name	Reference	Proponent Committed Mitigation	Management Plan	Commitment Incorporated	Section Location	Notes
Heritage Resources PP	Implement Site-Specific Measures for Paleontological Resources	PP Table 32-2 (YOR 2017-0211-027-1)	<p>Goldcorp will follow the guidance provided in the <i>Yukon Mineral Exploration Best Management Practices for Heritage Resources</i> (Government of Yukon 2010). Goldcorp will conduct the following activities:</p> <ul style="list-style-type: none"> In the event that bone, and tusk is uncovered, collect as much of the animal(s) as can be located and preserved. If possible, verify whether it is a single intact skeleton or whether multiple animals are represented. In the event that a single intact skeleton is found or mummified remains that preserve the hide or flesh of the animal, avoid further disturbance by protecting the remains through buffering from Project activities, or removing with intact surrounding sediments and storing. Advise the Yukon Paleontology office of all findings, and store or protect as advised until they can be collected and conserved by the Yukon Paleontology office. 	Heritage Resources Protection Plan	Yes	Heritage Resources Protection Plan Section 6.7: Chance Find Protocol	A Chance Find of a paleontological resource will be reported to the Environmental Manager who will then contact affected First Nation, YG Heritage Resources and the Project Archaeologist for further directions and recommendations on how to proceed.
Heritage Resources PP	Systematic Data Recovery	PP Table 32-2 (YOR 2017-0211-027-1)	If the resource sites cannot be avoided, Goldcorp will conduct a systematic data recovery (SDR) prior to any potentially ground-altering development activities. All SDR studies will be conducted under the authority of a Historic Resources Act Class 2 permit and in compliance with the Tr'ondëk Hwëch'in Heritage Act.	Heritage Resources Protection Plan	Yes	Heritage Resources Protection Plan Section 6.4: Systemic Data Recovery	
Heritage Resources PP	Systematic Data Recovery	SIR1-18.0-R277 (YOR 2017-0211-326-2)	A final permit report will be available to First Nations, regulators, and other archaeologists.	Heritage Resources Protection Plan	Yes	Heritage Resources Protection Plan Section 4.2: Heritage Resources Impact Assessments, Section 6.2: Future Heritage Resources Impact Assessments, Section 8.0: Annual Reporting	

APPENDIX B

Coffee Project and Coffee Exploration Project Known Heritage Sites and Protection Measures Summary Table

Borden/ YHSI #	General Project Location	Project Authorization nearest to Heritage/YHSI Site	Heritage/YHSI Location Relative to the Project and Coffee Exploration Project	HRIA Permit	Status of Heritage/YHSI Site from the HRIA	Heritage Resource Protection Measure	Impact Status
1150/10/ 097	NAR	Work in Right of Way Permit	Heritage/YHSI site and protection buffer are outside of existing NAR ROW or outside of new NAR ROW	16-13ASR 17-15ASR	Given this site's recorded location outside of the NAR ROW, this site area will not be impacted by the NAR.	<ol style="list-style-type: none"> 1. Heritage site protection buffer 2. Heritage site protection buffers will be identified on construction or surface disturbance maps 3. Heritage site protection buffer flagged prior to construction, surface disturbance or vegetation clearing (where site is located equal to or less than 100 m from surface or vegetation clearing area) 3. No ground disturbing work within heritage protection buffer 4. Quarterly inspections (when operating and surface clearing is commencing) to confirm barriers/flagging (where site is located equal to or less than 100 m from surface or vegetation clearing area) 5. Proponent-led, annual review of ground clearing activities against known heritage sites and areas of potential 	Heritage site avoided
1150/10/ 099	NAR	Work in Right of Way Permit	Heritage/YHSI site and protection buffer are outside of existing NAR ROW or outside of new NAR ROW	16-13ASR 17-15ASR	Given this site's recorded location outside of the NAR ROW, this site area will not be impacted by the NAR.	<ol style="list-style-type: none"> 1. Heritage site protection buffer 2. Heritage site protection buffers will be identified on construction or surface disturbance maps 3. Heritage site protection buffer flagged prior to construction, surface disturbance or vegetation clearing (where site is located equal to or less than 100 m from surface or vegetation clearing area) 3. No ground disturbing work within heritage protection buffer 4. Quarterly inspections (when operating and surface clearing is commencing) to confirm barriers/flagging (where site is located equal to or less than 100 m from surface or vegetation clearing area) 5. Proponent-led, annual review of ground clearing activities against known heritage sites and areas of potential 	Heritage site avoided
1150/10/ 098	NAR	Work in Right of Way Permit	Heritage/YHSI site and protection buffer are outside of existing NAR ROW or outside of new NAR ROW	16-13ASR 17-15ASR	Given this site's recorded location outside of the NAR ROW, this site area will not be impacted by the NAR.	<ol style="list-style-type: none"> 1. Heritage site protection buffer 2. Heritage site protection buffers will be identified on construction or surface disturbance maps 3. Heritage site protection buffer flagged prior to construction, surface disturbance or vegetation clearing (where site is located equal to or less than 100 m from surface or vegetation clearing area) 3. No ground disturbing work within heritage protection buffer 4. Quarterly inspections (when operating and surface clearing is commencing) to confirm barriers/flagging (where site is located equal to or less than 100 m from surface or vegetation clearing area) 5. Proponent-led, annual review of ground clearing activities against known heritage sites and areas of potential 	Heritage site avoided
1150/10/ 108	NAR	Work in Right of Way Permit	Heritage/YHSI site and protection buffer are outside of existing NAR ROW or outside of new NAR ROW	16-13ASR 17-15ASR	Given this site's recorded location outside of the NAR ROW, this site area will not be impacted by the NAR.	<ol style="list-style-type: none"> 1. Heritage site protection buffer 2. Heritage site protection buffers will be identified on construction or surface disturbance maps 3. Heritage site protection buffer flagged prior to construction, surface disturbance or vegetation clearing (where site is located equal to or less than 100 m from surface or vegetation clearing area) 3. No ground disturbing work within heritage protection buffer 4. Quarterly inspections (when operating and surface clearing is commencing) to confirm barriers/flagging (where site is located equal to or less than 100 m from surface or vegetation clearing area) 5. Proponent-led, annual review of ground clearing activities against known heritage sites and areas of potential 	Heritage site avoided

Borden/ YHSI #	General Project Location	Project Authorization nearest to Heritage/YHSI Site	Heritage/YHSI Location Relative to the Project and Coffee Exploration Project	HRIA Permit	Status of Heritage/YHSI Site from the HRIA	Heritage Resource Protection Measure	Impact Status
1150/10/ 047	NAR	Work in Right of Way Permit	Heritage/YHSI site protection buffer overlaps with an existing ROW	16-13ASR 17-15ASR	1150/10/047 is located near active placer mining. Heritage protection buffer currently overlaps existing ROW. Vegetation clearing to only take place within heritage protection buffer.	<ol style="list-style-type: none"> 1. Heritage site protection buffer 2. Heritage site protection buffers will be identified on construction maps 3. Heritage site protection buffer flagged prior to construction 4. No ground disturbing work within heritage protection buffer 5. Hand falling of vegetation within heritage protection buffer where it overlaps with ROW 6. Monitor present during vegetation clearing and Chance Find Procedure implemented 7. Quarterly inspections to confirm barriers/flagging (when operating and surface clearing is commencing) 8. Proponent-led, annual review of ground clearing activities against known heritage sites and areas of potential 	Heritage site avoided
KjVi-8	NAR	Work in Right of Way Permit	Heritage/YHSI site protection buffer overlaps with an existing ROW	17-15ASR	Existing disturbance within the 30 m buffer zone is extensive. The buffer area was thoroughly surface inspected under permit 17-15ASR, and no additional artifacts were observed. Given the high level of existing disturbance within and surrounding the KjVi-8 site area, hand falling vegetation to minimize any further ground disturbance and the implementation of a chance finds procedure is considered to be an adequate management strategy to avoid potential further impacts to KjVi-8.	<ol style="list-style-type: none"> 1. Heritage site protection buffer 2. Heritage site protection buffers will be identified on construction maps 3. Heritage site protection buffer flagged prior to construction 4. No ground disturbing work within heritage protection buffer 5. Hand falling of vegetation within heritage protection buffer where it overlaps with ROW 6. Monitor present during vegetation clearing and Chance Find Procedure implemented 7. Quarterly inspections to confirm barriers/flagging (when operating and surface clearing is commencing) 8. Proponent-led, annual review of ground clearing activities against known heritage sites and areas of potential 	Heritage site avoided
KjVi-9	NAR	Land Use Permit	Heritage/YHSI site and protection buffer are outside of existing NAR ROW or outside of new NAR ROW	17-15ASR	The NAR alignment submitted under the Land Use Permit was routed away from the existing road to avoid the heritage site. The 30-m avoidance buffer lies outside the NAR ROW and will therefore not be affected by NAR development. Continued avoidance of this area is recommended.	<ol style="list-style-type: none"> 1. Heritage site protection buffer 2. Heritage site protection buffers will be identified on construction or surface disturbance maps 3. Heritage site protection buffer flagged prior to construction, surface disturbance or vegetation clearing (where site is located equal to or less than 100 m from surface or vegetation clearing area) 4. Quarterly inspections (when operating and surface clearing is commencing) to confirm barriers/flagging (where site is located equal to or less than 100 m from surface or vegetation clearing area) 5. Proponent-led, annual review of ground clearing activities against known heritage sites and areas of potential 	Heritage site avoided
KjVi-2	NAR	Land Use Permit	Heritage/YHSI site and protection buffer are outside of existing NAR ROW or outside of new NAR ROW	17-15ASR	The NAR alignment submitted under the Land Use Permit was routed away from the existing road to avoid the heritage site. The 30-m avoidance buffer lies outside the NAR ROW and will therefore not be affected by NAR development. Continued avoidance of this area is recommended.	<ol style="list-style-type: none"> 1. Heritage site protection buffer 2. Heritage site protection buffers will be identified on construction or surface disturbance maps 3. Heritage site protection buffer flagged prior to construction, surface disturbance or vegetation clearing (where site is located equal to or less than 100 m from surface or vegetation clearing area) 3. No ground disturbing work within heritage protection buffer 4. Quarterly inspections (when operating and surface clearing is commencing) to confirm barriers/flagging (where site is located equal to or less than 100 m from surface or vegetation clearing area) 5. Proponent-led, annual review of ground clearing activities against known heritage sites and areas of potential 	Heritage site avoided

Borden/ YHSI #	General Project Location	Project Authorization nearest to Heritage/YHSI Site	Heritage/YHSI Location Relative to the Project and Coffee Exploration Project	HRIA Permit	Status of Heritage/YHSI Site from the HRIA	Heritage Resource Protection Measure	Impact Status
KjVi-1	NAR	Land Use Permit	Heritage/YHSI site and protection buffer are outside of existing NAR ROW or outside of new NAR ROW	17-15ASR	The NAR alignment submitted under the Land Use Permit was routed away from the existing road to avoid the heritage site. The 30-m avoidance buffer lies outside the NAR ROW and will therefore not be affected by NAR development. Continued avoidance of this area is recommended.	<ol style="list-style-type: none"> 1. Heritage site protection buffer 2. Heritage site protection buffers will be identified on construction or surface disturbance maps 3. Heritage site protection buffer flagged prior to construction, surface disturbance or vegetation clearing (where site is located equal to or less than 100 m from surface or vegetation clearing area) 3. No ground disturbing work within heritage protection buffer 4. Quarterly inspections (when operating and surface clearing is commencing) to confirm barriers/flagging (where site is located equal to or less than 100 m from surface or vegetation clearing area) 5. Proponent-led, annual review of ground clearing activities against known heritage sites and areas of potential 	Heritage site avoided
KjVi-10	NAR	Land Use Permit	Heritage/YHSI site and protection buffer are outside of existing NAR ROW or outside of new NAR ROW	17-15ASR	The proposed NAR alignment was revised near KjVi-10 so that the site area and 30 m avoidance buffer are located outside of the NAR ROW. As such, it will not be impacted by NAR development. Continued avoidance is recommended.	<ol style="list-style-type: none"> 1. Heritage site protection buffer 2. Heritage site protection buffers will be identified on construction or surface disturbance maps 3. Heritage site protection buffer flagged prior to construction, surface disturbance or vegetation clearing (where site is located equal to or less than 100 m from surface or vegetation clearing area) 3. No ground disturbing work within heritage protection buffer 4. Quarterly inspections (when operating and surface clearing is commencing) to confirm barriers/flagging (where site is located equal to or less than 100 m from surface or vegetation clearing area) 5. Proponent-led, annual review of ground clearing activities against known heritage sites and areas of potential 	Heritage site avoided
KjVi-11	NAR	Work in Right of Way Permit	Heritage/YHSI site protection buffer overlaps with an existing ROW	17-15ASR	The NAR alignment submitted under the Land Use Permit was routed away from the existing road to avoid the heritage site. The 30-m avoidance buffer lies outside the NAR ROW and will therefore not be affected by NAR development. Continued avoidance of this area is recommended.	<ol style="list-style-type: none"> 1. Heritage site protection buffer 2. Heritage site protection buffers will be identified on construction maps 3. Heritage site protection buffer flagged prior to construction 4. No ground disturbing work within heritage protection buffer 5. Hand falling of vegetation within heritage protection buffer where it overlaps with ROW 6. Monitor present during vegetation clearing and Chance Find Procedure implemented 7. Quarterly inspections to confirm barriers/flagging (when operating and surface clearing is commencing) 8. Proponent-led, annual review of ground clearing activities against known heritage sites and areas of potential 	Heritage site avoided
1150/10/ 055	NAR	Work in Right of Way Permit	Heritage/YHSI site and protection buffer are outside of existing NAR ROW or outside of new NAR ROW	16-13ASR 17-15ASR	It is unclear whether the site's location is recorded incorrectly or if it has been destroyed by mining activities. However, it should be noted that placer mining related disturbance is extensive throughout the area surrounding the recorded site location, so even if the documented location is incorrect it is unlikely that the site will have avoided impacts.	<ol style="list-style-type: none"> 1. Heritage site protection buffer 2. Heritage site protection buffers will be identified on construction or surface disturbance maps 3. Heritage site protection buffer flagged prior to construction, surface disturbance or vegetation clearing (where site is located equal to or less than 100 m from surface or vegetation clearing area) 3. No ground disturbing work within heritage protection buffer 4. Quarterly inspections (when operating and surface clearing is commencing) to confirm barriers/flagging (where site is located equal to or less than 100 m from surface or vegetation clearing area) 5. Proponent-led, annual review of ground clearing activities against known heritage sites and areas of potential 	Site has been previously impacted

Borden/ YHSI #	General Project Location	Project Authorization nearest to Heritage/YHSI Site	Heritage/YHSI Location Relative to the Project and Coffee Exploration Project	HRIA Permit	Status of Heritage/YHSI Site from the HRIA	Heritage Resource Protection Measure	Impact Status
1150/10/ 054	NAR	Work in Right of Way Permit	Heritage/YHSI site and protection buffer are outside of existing NAR ROW or outside of new NAR ROW	16-13ASR 17-15ASR	It is unclear whether the sites's location is recorded incorrectly or if it has been destroyed by mining activities. However, it should be noted that placer mining related disturbance is extensive throughout the area surrounding the recorded site location, so even if the documented location is incorrect it is unlikely that the site will have avoided impacts.	1. Heritage site protection buffer 2. Heritage site protection buffers will be identified on construction or surface disturbance maps 3. Heritage site protection buffer flagged prior to construction, surface disturbance or vegetation clearing (where site is located equal to or less than 100 m from surface or vegetation clearing area) 3. No ground disturbing work within heritage protection buffer 4. Quarterly inspections (when operating and surface clearing is commencing) to confirm barriers/flagging (where site is located equal to or less than 100 m from surface or vegetation clearing area) 5. Proponent-led, annual review of ground clearing activities against known heritage sites and areas of potential	Site has been previously impacted
1150/10/ 053	NAR	Work in Right of Way Permit	Heritage/YHSI site and protection buffer are outside of existing NAR ROW or outside of new NAR ROW	16-13ASR 17-15ASR	It is unclear whether the site's location is recorded incorrectly or if it has been destroyed by mining activities. However, it should be noted that placer mining related disturbance is extensive throughout the area surrounding the recorded site location, so even if the documented location is incorrect it is unlikely that the site will have avoided impacts.	1. Heritage site protection buffer 2. Heritage site protection buffers will be identified on construction or surface disturbance maps 3. Heritage site protection buffer flagged prior to construction, surface disturbance or vegetation clearing (where site is located equal to or less than 100 m from surface or vegetation clearing area) 3. No ground disturbing work within heritage protection buffer 4. Quarterly inspections (when operating and surface clearing is commencing) to confirm barriers/flagging (where site is located equal to or less than 100 m from surface or vegetation clearing area) 5. Proponent-led, annual review of ground clearing activities against known heritage sites and areas of potential	Site has been previously impacted
1150/10/ 052	NAR	Work in Right of Way Permit	Heritage/YHSI site and protection buffer are outside of existing NAR ROW or outside of new NAR ROW	16-13ASR 17-15ASR	It is unclear whether the site's location is recorded incorrectly or if it has been destroyed by mining activities. However, it should be noted that placer mining related disturbance is extensive throughout the area surrounding the recorded site location, so even if the documented location is incorrect it is unlikely that the site will have avoided impacts.	1. Heritage site protection buffer 2. Heritage site protection buffers will be identified on construction or surface disturbance maps 3. Heritage site protection buffer flagged prior to construction, surface disturbance or vegetation clearing (where site is located equal to or less than 100 m from surface or vegetation clearing area) 3. No ground disturbing work within heritage protection buffer 4. Quarterly inspections (when operating and surface clearing is commencing) to confirm barriers/flagging (where site is located equal to or less than 100 m from surface or vegetation clearing area) 5. Proponent-led, annual review of ground clearing activities against known heritage sites and areas of potential	Site has been previously impacted
KjVi-12	NAR	Work in Right of Way Permit	Heritage/YHSI site protection buffer overlaps with an existing ROW	17-15ASR	Hand falling vegetation within the buffer overlap to minimize any further ground disturbance and the implementation of a chance finds procedure is considered to be an adequate management strategy to avoid potential further impacts to the heritage resource. Continued avoidance is recommended for the remainder of the site area and buffer zone. If avoidance is not feasible then further mitigative study is recommended.	1. Heritage site protection buffer 2. Heritage site protection buffers will be identified on construction maps 3. Heritage site protection buffer flagged prior to construction 4. No ground disturbing work within heritage protection buffer 5. Hand falling of vegetation within heritage protection buffer where it overlaps with ROW 6. Monitor present during vegetation clearing and Chance Find Procedure implemented 7. Quarterly inspections to confirm barriers/flagging (when operating and surface clearing is commencing) 8. Proponent-led, annual review of ground clearing activities against known heritage sites and areas of potential	Heritage site avoided

Borden/ YHSI #	General Project Location	Project Authorization nearest to Heritage/YHSI Site	Heritage/YHSI Location Relative to the Project and Coffee Exploration Project	HRIA Permit	Status of Heritage/YHSI Site from the HRIA	Heritage Resource Protection Measure	Impact Status
KjVi-5	NAR	Work in Right of Way Permit	Heritage/YHSI site within existing ROW	17-15ASR	Hand falling vegetation within the buffer overlap to minimize any further ground disturbance and the implementation of a chance finds procedure is considered to be an adequate management strategy to avoid potential further impacts to the heritage resource. Continued avoidance is recommended for the remainder of the site area and buffer zone. If avoidance is not feasible then further mitigative study is recommended.	<ol style="list-style-type: none"> 1. Heritage site protection buffer 2. Heritage site protection buffers will be identified on construction maps 3. Heritage site protection buffer flagged prior to construction 4. No ground disturbing work within heritage protection buffer 5. Hand falling of vegetation within heritage protection buffer where it overlaps with ROW 6. Monitor present during vegetation clearing and Chance Find Procedure implemented 7. Quarterly inspections to confirm barriers/flagging (when operating and surface clearing is commencing) 8. Proponent-led, annual review of ground clearing activities against known heritage sites and areas of potential 	Heritage site avoided
KjVi-6	NAR	Work in Right of Way Permit	Heritage/YHSI site within existing ROW	17-15ASR	Note that this site sits on top of a former/existing borrow source. The Proponent does not plan to use this borrow source. No ground clearing activities will take place within the buffer, however this buffer is currently less than 30 m from the existing road.	<ol style="list-style-type: none"> 1. Heritage site protection buffer 2. Heritage site protection buffers will be identified on construction maps 3. Heritage site protection buffer flagged prior to construction 4. No ground disturbing work within heritage protection buffer 5. Hand falling of vegetation within heritage protection buffer where it overlaps with ROW 6. Monitor present during vegetation clearing and Chance Find Procedure implemented 7. Quarterly inspections to confirm barriers/flagging (when operating and surface clearing is commencing) 8. Proponent-led, annual review of ground clearing activities against known heritage sites and areas of potential 	Heritage site avoided
KjVi-7	NAR	Work in Right of Way Permit	Heritage/YHSI site within existing ROW	17-15ASR	Hand falling vegetation within the buffer overlap to minimize any further ground disturbance and the implementation of a chance finds procedure is considered to be an adequate management strategy to avoid potential further impacts to the heritage resource. Continued avoidance is recommended for the remainder of the site area and buffer zone. If avoidance is not feasible then further mitigative study is recommended.	<ol style="list-style-type: none"> 1. Heritage site protection buffer 2. Heritage site protection buffers will be identified on construction maps 3. Heritage site protection buffer flagged prior to construction 4. No ground disturbing work within heritage protection buffer 5. Hand falling of vegetation within heritage protection buffer where it overlaps with ROW 6. Monitor present during vegetation clearing and Chance Find Procedure implemented 7. Quarterly inspections to confirm barriers/flagging (when operating and surface clearing is commencing) 8. Proponent-led, annual review of ground clearing activities against known heritage sites and areas of potential 	Heritage site avoided
KjVj-2	NAR	Work in Right of Way Permit	Heritage/YHSI site protection buffer overlaps with an existing ROW	16-13ASR 17-15ASR	Hand falling vegetation within the buffer overlap to minimize any further ground disturbance and the implementation of a chance finds procedure is considered to be an adequate management strategy to avoid potential further impacts to the heritage resource. Continued avoidance is recommended for the remainder of the site area and buffer zone. If avoidance is not feasible then further mitigative study is recommended.	<ol style="list-style-type: none"> 1. Heritage site protection buffer 2. Heritage site protection buffers will be identified on construction maps 3. Heritage site protection buffer flagged prior to construction 4. No ground disturbing work within heritage protection buffer 5. Hand falling of vegetation within heritage protection buffer where it overlaps with ROW 6. Monitor present during vegetation clearing and Chance Find Procedure implemented 7. Quarterly inspections to confirm barriers/flagging (when operating and surface clearing is commencing) 8. Proponent-led, annual review of ground clearing activities against known heritage sites and areas of potential 	Heritage site avoided
KiVj-5	NAR	Work in Right of Way Permit	Heritage/YHSI site and protection buffer are outside of existing NAR ROW or outside of new NAR ROW	17-15ASR	The site is located outside of the NAR ROW where it will not be disturbed by NAR construction. Continued avoidance is recommended.	<ol style="list-style-type: none"> 1. Heritage site protection buffer 2. Heritage site protection buffers will be identified on construction or surface disturbance maps 3. Heritage site protection buffer flagged prior to construction, surface disturbance or vegetation clearing (where site is located equal to or less than 100 m from surface or vegetation clearing area) 3. No ground disturbing work within heritage protection buffer 4. Quarterly inspections (when operating and surface clearing is commencing) to confirm barriers/flagging (where site is located equal to or less than 100 m from surface or vegetation clearing area) 5. Proponent-led, annual review of ground clearing activities against known heritage sites and areas of potential 	Heritage site avoided

Borden/ YHSI #	General Project Location	Project Authorization nearest to Heritage/YHSI Site	Heritage/YHSI Location Relative to the Project and Coffee Exploration Project	HRIA Permit	Status of Heritage/YHSI Site from the HRIA	Heritage Resource Protection Measure	Impact Status
KiVj-4	NAR	Work in Right of Way Permit	Heritage/YHSI site and protection buffer are outside of existing NAR ROW or outside of new NAR ROW	16-13ASR 17-15ASR	The site is located outside of the NAR ROW where it will not be disturbed by NAR construction. Continued avoidance is recommended.	<ol style="list-style-type: none"> 1. Heritage site protection buffer 2. Heritage site protection buffers will be identified on construction or surface disturbance maps 3. Heritage site protection buffer flagged prior to construction, surface disturbance or vegetation clearing (where site is located equal to or less than 100 m from surface or vegetation clearing area) 3. No ground disturbing work within heritage protection buffer 4. Quarterly inspections (when operating and surface clearing is commencing) to confirm barriers/flagging (where site is located equal to or less than 100 m from surface or vegetation clearing area) 5. Proponent-led, annual review of ground clearing activities against known heritage sites and areas of potential 	Heritage site avoided
KhVi-4	NAR	Work in Right of Way Permit	Heritage/YHSI site protection buffer overlaps with an existing ROW	17-15ASR	<p>KhVi-4 is located on a high ridge separated from the NAR ROW alignment by a nearly vertical rockface. All the lands between the base of the rockface and the NAR ROW are disturbed by the existing access road to the Bedrock Mining camp. No further work is recommended in the portion of the 30 m avoidance buffer to the south of the KhVi-4 site area due to previous disturbance and the fact that it is unrelated to the site landform.</p> <p>Hand falling vegetation within the buffer overlap to minimize any further ground disturbance and the implementation of a chance finds procedure is considered to be an adequate management strategy to avoid potential further impacts to the heritage resource. Continued avoidance is recommended for the remainder of the site area and buffer zone. If avoidance is not feasible then further mitigative study is recommended.</p>	<ol style="list-style-type: none"> 1. Heritage site protection buffer 2. Heritage site protection buffers will be identified on construction maps 3. Heritage site protection buffer flagged prior to construction 4. No ground disturbing work within heritage protection buffer 5. Hand falling of vegetation within heritage protection buffer where it overlaps with ROW 6. Monitor present during vegetation clearing and Chance Find Procedure implemented 7. Quarterly inspections to confirm barriers/flagging (when operating and surface clearing is commencing) 8. Proponent-led, annual review of ground clearing activities against known heritage sites and areas of potential 	Heritage site avoided
KhVi-5	NAR	Work in Right of Way Permit	Heritage/YHSI site and protection buffer are outside of existing NAR ROW or outside of new NAR ROW	17-15ASR	Hand falling vegetation within the buffer overlap to minimize any further ground disturbance and the implementation of a chance finds procedure is considered to be an adequate management strategy to avoid potential further impacts to the heritage resource. Continued avoidance is recommended for the remainder of the site area and buffer zone. If avoidance is not feasible then further mitigative study is recommended.	<ol style="list-style-type: none"> 1. Heritage site protection buffer 2. Heritage site protection buffers will be identified on construction or surface disturbance maps 3. Heritage site protection buffer flagged prior to construction, surface disturbance or vegetation clearing (where site is located equal to or less than 100 m from surface or vegetation clearing area) 3. No ground disturbing work within heritage protection buffer 4. Quarterly inspections (when operating and surface clearing is commencing) to confirm barriers/flagging (where site is located equal to or less than 100 m from surface or vegetation clearing area) 5. Proponent-led, annual review of ground clearing activities against known heritage sites and areas of potential 	Heritage site avoided
KhVi-6	NAR	Work in Right of Way Permit	Heritage/YHSI site protection buffer overlaps with an existing ROW	17-15ASR	Hand falling vegetation within the buffer overlap to minimize any further ground disturbance and the implementation of a chance finds procedure is considered to be an adequate management strategy to avoid potential further impacts to the heritage resource. Continued avoidance is recommended for the remainder of the site area and buffer zone. If avoidance is not feasible then further mitigative study is recommended.	<ol style="list-style-type: none"> 1. Heritage site protection buffer 2. Heritage site protection buffers will be identified on construction maps 3. Heritage site protection buffer flagged prior to construction 4. No ground disturbing work within heritage protection buffer 5. Hand falling of vegetation within heritage protection buffer where it overlaps with ROW 6. Monitor present during vegetation clearing and Chance Find Procedure implemented 7. Quarterly inspections to confirm barriers/flagging (when operating and surface clearing is commencing) 8. Proponent-led, annual review of ground clearing activities against known heritage sites and areas of potential 	Heritage site avoided
KhVi-7	NAR	Work in Right of Way Permit	Heritage/YHSI site protection buffer overlaps with an existing ROW	17-15ASR	Hand falling vegetation within the buffer overlap to minimize any further ground disturbance and the implementation of a chance finds procedure is considered to be an adequate management strategy to avoid potential further impacts to the heritage resource. Continued avoidance is recommended for the remainder of the site area and buffer zone. If avoidance is not feasible then further mitigative study is recommended.	<ol style="list-style-type: none"> 1. Heritage site protection buffer 2. Heritage site protection buffers will be identified on construction maps 3. Heritage site protection buffer flagged prior to construction 4. No ground disturbing work within heritage protection buffer 5. Hand falling of vegetation within heritage protection buffer where it overlaps with ROW 6. Monitor present during vegetation clearing and Chance Find Procedure implemented 7. Quarterly inspections to confirm barriers/flagging (when operating and surface clearing is commencing) 8. Proponent-led, annual review of ground clearing activities against known heritage sites and areas of potential 	Heritage site avoided

Borden/ YHSI #	General Project Location	Project Authorization nearest to Heritage/YHSI Site	Heritage/YHSI Location Relative to the Project and Coffee Exploration Project	HRIA Permit	Status of Heritage/YHSI Site from the HRIA	Heritage Resource Protection Measure	Impact Status
KhVi-11	NAR	Resource Road Permit	Heritage/YHSI site within new build sections of NAR and within the ROW	17-15ASR 24-33ASR	<p>The HRIA (Heritage Resource Impact Assessment: Coffee Gold Project Northern Access Route Barge Landing Sites Final Report (24-33ASR) (HRIA 24-33ASR)) recommended that the NAR alignment be allowed to pass through KhVi-11's original 30-m avoidance buffer. No further heritage resource assessment work was recommended. This recommendation reflects discussions with affected First Nations regarding alternatives to Systematic Data Recovery, as well as the Proponent's efforts to refine the engineering design to avoid impacts to the site to the greatest extent possible. The HRIA also recommended that an archaeologist should be on site during construction of this part of the NAR to ensure that the sites are avoided during construction activities.</p> <p>Because ground-clearing activities will occur within portions of the original 30 m protective buffer, the effective avoidance zones will be smaller than the standard setback at approximately 8.5 m. To ensure that the level of protection for this heritage site is not diminished, the Proponent has incorporated additional safeguards into the HRPP.</p> <p>The 24-33ASR examined this issue in detail, including targeted shovel testing within the buffer and site areas to assess whether closer disturbance could be supported. Building on the findings of the HRIA, which supported allowing ground disturbance closer to the sites than the standard 30 m buffer, the Proponent has adopted several enhanced protection measures. These include installing physical barriers to clearly delineate the reduced buffer boundaries and ensuring the presence of an archaeologist holding a Class 2 Permit during initial ground clearing activities.</p> <p>Additional operational controls, such as routine inspections and an annual review of ground clearing activities and heritage site locations, have also been incorporated to ensure that the site specific reduced buffers are consistently followed.</p>	<ol style="list-style-type: none"> 1. Project engineering refined to minimize impacts 2. Heritage site delineation via shovel testing 3. Site-specific heritage site protection buffer based on HRIA recommendations 4. Install physical barriers adjacent to planned ground disturbance prior to construction 5. Archaeologist present, with Class 2 Permit, during ground clearing activities near the heritage site 6. Heritage site protection buffers will be identified on construction maps 7. Heritage site protection buffer flagged prior to construction 8. No ground disturbing work within heritage protection buffer 9. Hand falling of vegetation within heritage protection buffer where it overlaps with ROW, if any overlap 10. Quarterly inspections to confirm barriers/flagging (when operating and surface clearing is commencing) 11. Proponent-led, annual review of ground clearing activities against known heritage sites and areas of potential 	Heritage site avoided
KhVi-8	NAR	Resource Road Permit	Heritage/YHSI site within new build sections of NAR and within the ROW	17-15ASR 24-33ASR	<p>The HRIA (Heritage Resource Impact Assessment: Coffee Gold Project Northern Access Route Barge Landing Sites Final Report (24-33ASR) (HRIA 24-33ASR)) recommended that the NAR alignment be allowed to pass through KhVi-8's original 30-m avoidance buffer. No further heritage resource assessment work was recommended. This recommendation reflects discussions with affected First Nations regarding alternatives to Systematic Data Recovery, as well as the Proponent's efforts to refine the engineering design to avoid impacts to the site to the greatest extent possible. The HRIA also recommended that an archaeologist should be on site during construction of this part of the NAR to ensure that the sites are avoided during construction activities.</p> <p>Because ground-clearing activities will occur within portions of the original 30 m protective buffer, the effective avoidance zones will be smaller than the standard setback at approximately 9 m. To ensure that the level of protection for this heritage site is not diminished, the Proponent has incorporated additional safeguards into the HRPP.</p> <p>The 24-33ASR examined this issue in detail, including targeted shovel testing within the buffer and site areas to assess whether closer disturbance could be supported. Building on the findings of the HRIA, which supported allowing ground disturbance closer to the sites than the standard 30 m buffer, the Proponent has adopted several enhanced protection measures. These include installing physical barriers to clearly delineate the reduced buffer boundaries and ensuring the presence of an archaeologist holding a Class 2 Permit during initial ground clearing activities.</p> <p>Additional operational controls, such as routine inspections and an annual review of ground clearing activities and heritage site locations, have also been incorporated to ensure that the site specific reduced buffers are consistently followed.</p>	<ol style="list-style-type: none"> 1. Project engineering refined to minimize impacts 2. Heritage site delineation via shovel testing 3. Site-specific heritage site protection buffer based on HRIA recommendations 4. Install physical barriers adjacent to planned ground disturbance prior to construction 5. Archaeologist present, with Class 2 Permit, during ground clearing activities near the heritage site 6. Heritage site protection buffers will be identified on construction maps 7. Heritage site protection buffer flagged prior to construction 8. No ground disturbing work within heritage protection buffer 9. Hand falling of vegetation within heritage protection buffer where it overlaps with ROW, if any overlap 10. Quarterly inspections to confirm barriers/flagging (when operating and surface clearing is commencing) 11. Proponent-led, annual review of ground clearing activities against known heritage sites and areas of potential 	Heritage site avoided

Borden/ YHSI #	General Project Location	Project Authorization nearest to Heritage/YHSI Site	Heritage/YHSI Location Relative to the Project and Coffee Exploration Project	HRIA Permit	Status of Heritage/YHSI Site from the HRIA	Heritage Resource Protection Measure	Impact Status
KhVi-12	NAR	Resource Road Permit	Heritage/YHSI site within new build sections of NAR and within the ROW	24-33ASR	<p>The HRIA (Heritage Resource Impact Assessment: Coffee Gold Project Northern Access Route Barge Landing Sites Final Report (24-33ASR) (HRIA 24-33ASR)) recommended that the NAR alignment be allowed to pass through KhVi-12's standard 30-m avoidance buffer. No further heritage resource assessment work was recommended. This recommendation reflects discussions with affected First Nations regarding alternatives to Systematic Data Recovery, as well as the Proponent's efforts to refine the engineering design to avoid impacts to the site to the greatest extent possible. The HRIA also recommended that an archaeologist should be on site during construction of this part of the NAR to ensure that the sites are avoided during construction activities.</p> <p>Because ground-clearing activities will occur within portions of the original 30 m protective buffer, the effective avoidance zones will be smaller than the standard setback at approximately 17 m. To ensure that the level of protection for this heritage site is not diminished, the Proponent has incorporated additional safeguards into the HRPP.</p> <p>The 24-33ASR examined this issue in detail, including targeted shovel testing within the buffer and site areas to assess whether closer disturbance could be supported. Building on the findings of the HRIA, which supported allowing ground disturbance closer to the sites than the standard 30 m buffer, the Proponent has adopted several enhanced protection measures. These include installing physical barriers to clearly delineate the reduced buffer boundaries and ensuring the presence of an archaeologist holding a Class 2 Permit during initial ground clearing activities.</p> <p>Additional operational controls, such as routine inspections and an annual review of ground clearing activities and heritage site locations, have also been incorporated to ensure that the site specific reduced buffers are consistently followed.</p>	<ol style="list-style-type: none"> 1. Project engineering refined to minimize impacts 2. Heritage site delineation via shovel testing 3. Site-specific heritage site protection buffer based on HRIA recommendations 4. Install physical barriers adjacent to planned ground disturbance prior to construction 5. Archaeologist present, with Class 2 Permit, during ground clearing activities near the heritage site 6. Heritage site protection buffers will be identified on construction maps 7. Heritage site protection buffer flagged prior to construction 8. No ground disturbing work within heritage protection buffer 9. Hand falling of vegetation within heritage protection buffer where it overlaps with ROW, if any overlap 10. Quarterly inspections to confirm barriers/flagging (when operating and surface clearing is commencing) 11. Proponent-led, annual review of ground clearing activities against known heritage sites and areas of potential 	Heritage site avoided
KhVi-9	NAR	Resource Road Permit	Heritage/YHSI site within new build sections of NAR and within the ROW	17-15ASR 24-33ASR	<p>The HRIA (Heritage Resource Impact Assessment: Coffee Gold Project Northern Access Route Barge Landing Sites Final Report (24-33ASR) (HRIA 24-33ASR)) recommended that the NAR alignment be allowed to pass through KhVi-9's original 30-m avoidance buffer. No further heritage resource assessment work was recommended. This recommendation reflects discussions with affected First Nations regarding alternatives to Systematic Data Recovery, as well as the Proponent's efforts to refine the engineering design to avoid impacts to the site to the greatest extent possible. The HRIA also recommended that an archaeologist should be on site during construction of this part of the NAR to ensure that the sites are avoided during construction activities.</p> <p>Because ground-clearing activities will occur within portions of the original 30 m protective buffer, the effective avoidance zones will be smaller than the standard setback at approximately 15 m. To ensure that the level of protection for this heritage site is not diminished, the Proponent has incorporated additional safeguards into the HRPP.</p> <p>The 24-33ASR examined this issue in detail, including targeted shovel testing within the buffer and site areas to assess whether closer disturbance could be supported. Building on the findings of the HRIA, which supported allowing ground disturbance closer to the sites than the standard 30 m buffer, the Proponent has adopted several enhanced protection measures. These include installing physical barriers to clearly delineate the reduced buffer boundaries and ensuring the presence of an archaeologist holding a Class 2 Permit during initial ground clearing activities.</p> <p>Additional operational controls, such as routine inspections and an annual review of ground clearing activities and heritage site locations, have also been incorporated to ensure that the site specific reduced buffers are consistently followed.</p>	<ol style="list-style-type: none"> 1. Project engineering refined to minimize impacts 2. Heritage site delineation via shovel testing 3. Site-specific heritage site protection buffer based on HRIA recommendations 4. Install physical barriers adjacent to planned ground disturbance prior to construction 5. Archaeologist present, with Class 2 Permit, during ground clearing activities near the heritage site 6. Heritage site protection buffers will be identified on construction maps 7. Heritage site protection buffer flagged prior to construction 8. No ground disturbing work within heritage protection buffer 9. Hand falling of vegetation within heritage protection buffer where it overlaps with ROW, if any overlap 10. Quarterly inspections to confirm barriers/flagging (when operating and surface clearing is commencing) 11. Proponent-led, annual review of ground clearing activities against known heritage sites and areas of potential 	Heritage site avoided

Borden/ YHSI #	General Project Location	Project Authorization nearest to Heritage/YHSI Site	Heritage/YHSI Location Relative to the Project and Coffee Exploration Project	HRIA Permit	Status of Heritage/YHSI Site from the HRIA	Heritage Resource Protection Measure	Impact Status
KhVi-10	NAR	Resource Road Permit	Heritage/YHSI site and protection buffer are outside of existing NAR ROW or outside of new NAR ROW	17-15ASR 24-33ASR	Site area and 30 m buffer zone are outside of the NAR ROW. As such, it will not be impacted by NAR development. Continued avoidance is recommended.	<ol style="list-style-type: none"> 1. Heritage site protection buffer 2. Heritage site protection buffers will be identified on construction or surface disturbance maps 3. Heritage site protection buffer flagged prior to construction, surface disturbance or vegetation clearing (where site is located equal to or less than 100 m from surface or vegetation clearing area) 3. No ground disturbing work within heritage protection buffer 4. Quarterly inspections (when operating and surface clearing is commencing) to confirm barriers/flagging (where site is located equal to or less than 100 m from surface or vegetation clearing area) 5. Proponent-led, annual review of ground clearing activities against known heritage sites and areas of potential 	Heritage site avoided
115O/02/ 004	NAR	Land Use Permit	Heritage/YHSI site and protection buffer are outside of existing NAR ROW or outside of new NAR ROW	16-13ASR	This site is located outside of the NAR ROW as submitted for the Land Use Permit. Continued avoidance is recommended.	<ol style="list-style-type: none"> 1. Heritage site protection buffer 2. Heritage site protection buffers will be identified on construction or surface disturbance maps 3. Heritage site protection buffer flagged prior to construction, surface disturbance or vegetation clearing (where site is located equal to or less than 100 m from surface or vegetation clearing area) 3. No ground disturbing work within heritage protection buffer 4. Quarterly inspections (when operating and surface clearing is commencing) to confirm barriers/flagging (where site is located equal to or less than 100 m from surface or vegetation clearing area) 5. Proponent-led, annual review of ground clearing activities against known heritage sites and areas of potential 	Heritage site avoided
115O/02/ 007	NAR	Work in Right of Way Permit	Heritage/YHSI site within existing ROW	16-13ASR	<p>There is significant existing ground disturbance in this area, including levelling and associated push piles; no intact landforms were observed. There is a ruined log cabin along with a modern placer camp.</p> <p>Vegetation clearing only to take place in the ROW. Continued avoidance is recommended and if it's not feasible then further mitigative work may be required.</p>	<ol style="list-style-type: none"> 1. Heritage site protection buffer 2. Heritage site protection buffers will be identified on construction maps 3. Heritage site protection buffer flagged prior to construction 4. No ground disturbing work within heritage protection buffer 5. Hand falling of vegetation within heritage protection buffer where it overlaps with ROW 6. Monitor present during vegetation clearing and Chance Find Procedure implemented 7. Quarterly inspections to confirm barriers/flagging (when operating and surface clearing is commencing) 8. Proponent-led, annual review of ground clearing activities against known heritage sites and areas of potential 	Heritage site avoided
KgVi-1	NAR	Resource Road Permit	Heritage/YHSI site and protection buffer are outside of existing NAR ROW or outside of new NAR ROW	16-13ASR	Site area 30 m buffer zone does not extend into the NAR ROW. Continued avoidance is recommended. The nearby borrow source will not affect the heritage site.	<ol style="list-style-type: none"> 1. Heritage site protection buffer 2. Heritage site protection buffers will be identified on construction or surface disturbance maps 3. Heritage site protection buffer flagged prior to construction, surface disturbance or vegetation clearing (where site is located equal to or less than 100 m from surface or vegetation clearing area) 3. No ground disturbing work within heritage protection buffer 4. Quarterly inspections (when operating and surface clearing is commencing) to confirm barriers/flagging (where site is located equal to or less than 100 m from surface or vegetation clearing area) 5. Proponent-led, annual review of ground clearing activities against known heritage sites and areas of potential 	Heritage site avoided

Borden/ YHSI #	General Project Location	Project Authorization nearest to Heritage/YHSI Site	Heritage/YHSI Location Relative to the Project and Coffee Exploration Project	HRIA Permit	Status of Heritage/YHSI Site from the HRIA	Heritage Resource Protection Measure	Impact Status
KfVi-18	NAR	Work in Right of Way Permit	Heritage/YHSI site within existing ROW	17-15ASR	Site area 30 m buffer zone overlaps existing NAR ROW. However, lands within this overlap zone are considered to possess low heritage resource potential. Hand falling vegetation within the overlap to minimize any further ground disturbance and the implementation of a chance finds procedure is considered to be an adequate management strategy to avoid potential further impacts to KfVi-18. Continued avoidance is recommended for the remainder of the site area and buffer zone.	<ol style="list-style-type: none"> 1. Heritage site protection buffer 2. Heritage site protection buffers will be identified on construction maps 3. Heritage site protection buffer flagged prior to construction 4. No ground disturbing work within heritage protection buffer 5. Hand falling of vegetation within heritage protection buffer where it overlaps with ROW 6. Monitor present during vegetation clearing and Chance Find Procedure implemented 7. Quarterly inspections to confirm barriers/flagging (when operating and surface clearing is commencing) 8. Proponent-led, annual review of ground clearing activities against known heritage sites and areas of potential 	Heritage site avoided
115J/10/0 01	NAR	Resource Road Permit	Heritage/YHSI site and protection buffer are outside of existing NAR ROW or outside of new NAR ROW	17-15ASR	The site is located on an existing road and is more than 150 m from both the NAR alignment and an associated borrow source. Given this separation, no impacts are anticipated from NAR construction or borrow material extraction. Continued avoidance is recommended.	<ol style="list-style-type: none"> 1. Heritage site protection buffer 2. Heritage site protection buffers will be identified on construction or surface disturbance maps 3. Heritage site protection buffer flagged prior to construction, surface disturbance or vegetation clearing (where site is located equal to or less than 100 m from surface or vegetation clearing area) 3. No ground disturbing work within heritage protection buffer 4. Quarterly inspections (when operating and surface clearing is commencing) to confirm barriers/flagging (where site is located equal to or less than 100 m from surface or vegetation clearing area) 5. Proponent-led, annual review of ground clearing activities against known heritage sites and areas of potential 	Heritage site avoided
115J/10/0 02	NAR	Resource Road Permit	Heritage/YHSI site and protection buffer are outside of existing NAR ROW or outside of new NAR ROW	17-15ASR	The site is located on an existing road and is more than 250 m from both the NAR alignment and an associated borrow source. Given this separation, no impacts are anticipated from NAR construction or borrow material extraction. Continued avoidance is recommended.	<ol style="list-style-type: none"> 1. Heritage site protection buffer 2. Heritage site protection buffers will be identified on construction or surface disturbance maps 3. Heritage site protection buffer flagged prior to construction, surface disturbance or vegetation clearing (where site is located equal to or less than 100 m from surface or vegetation clearing area) 3. No ground disturbing work within heritage protection buffer 4. Quarterly inspections (when operating and surface clearing is commencing) to confirm barriers/flagging (where site is located equal to or less than 100 m from surface or vegetation clearing area) 5. Proponent-led, annual review of ground clearing activities against known heritage sites and areas of potential 	Heritage site avoided
KfVi-17	NAR	Resource Road Permit	Heritage/YHSI site and protection buffer are outside of existing NAR ROW or outside of new NAR ROW	17-15ASR	Site area and 30 m buffer zone are outside of the NAR ROW as submitted for the Resource Road Permit. As such, it will not be impacted by NAR development. Continued avoidance is recommended.	<ol style="list-style-type: none"> 1. Heritage site protection buffer 2. Heritage site protection buffers will be identified on construction or surface disturbance maps 3. Heritage site protection buffer flagged prior to construction, surface disturbance or vegetation clearing (where site is located equal to or less than 100 m from surface or vegetation clearing area) 3. No ground disturbing work within heritage protection buffer 4. Quarterly inspections (when operating and surface clearing is commencing) to confirm barriers/flagging (where site is located equal to or less than 100 m from surface or vegetation clearing area) 5. Proponent-led, annual review of ground clearing activities against known heritage sites and areas of potential 	Heritage site avoided

Borden/ YHSI #	General Project Location	Project Authorization nearest to Heritage/YHSI Site	Heritage/YHSI Location Relative to the Project and Coffee Exploration Project	HRIA Permit	Status of Heritage/YHSI Site from the HRIA	Heritage Resource Protection Measure	Impact Status
KfVi-16	NAR	Resource Road Permit	Heritage/YHSI site within new build sections of NAR and within the ROW	16-13ASR 17-15ASR 24-33ASR	<p>The HRIA (Heritage Resource Impact Assessment: Coffee Gold Project Northern Access Route Barge Landing Sites Final Report (24-33ASR) (HRIA 24-33ASR)) recommended that the NAR alignment be allowed to pass through KfVi-16's original 30-m avoidance buffer. No further heritage resource assessment work was recommended due to the low potential for additional cultural materials in that part of the buffer due to sloping terrain and negative shovel test results in that area. This recommendation reflects discussions with affected First Nations regarding alternatives to Systematic Data Recovery, as well as the Proponent's efforts to refine the engineering design to avoid impacts to the site to the greatest extent possible. The HRIA also recommended that an archaeologist should be on site during construction of this part of the NAR to ensure that the sites are avoided during construction activities.</p> <p>Because ground-clearing activities will occur within portions of the original 30 m protective buffer, the effective avoidance zones will be smaller than the standard setback at approximately 11 m. To ensure that the level of protection for this heritage site is not diminished, the Proponent has incorporated additional safeguards into the HRPP.</p> <p>The 24-33ASR examined this issue in detail, including targeted shovel testing within the buffer and site areas to assess whether closer disturbance could be supported. Building on the findings of the HRIA, which supported allowing ground disturbance closer to the sites than the standard 30 m buffer, the Proponent has adopted several enhanced protection measures. These include installing physical barriers to clearly delineate the reduced buffer boundaries and ensuring the presence of an archaeologist holding a Class 2 Permit during initial ground clearing activities.</p> <p>Additional operational controls, such as routine inspections and an annual review of ground clearing activities and heritage site locations, have also been incorporated to ensure that the site specific reduced buffers are consistently followed.</p>	<ol style="list-style-type: none"> 1. Project engineering refined to minimize impacts 2. Heritage site delineation via shovel testing 3. Site-specific heritage site protection buffer based on HRIA recommendations 4. Install physical barriers adjacent to planned ground disturbance prior to construction 5. Archaeologist present, with Class 2 Permit, during ground clearing activities near the heritage site 6. Heritage site protection buffers will be identified on construction maps 7. Heritage site protection buffer flagged prior to construction 8. No ground disturbing work within heritage protection buffer 9. Hand falling of vegetation within heritage protection buffer where it overlaps with ROW, if any overlap 10. Quarterly inspections to confirm barriers/flagging (when operating and surface clearing is commencing) 11. Proponent-led, annual review of ground clearing activities against known heritage sites and areas of potential 	Heritage site avoided
KfVj-5	NAR	Resource Road Permit	Heritage/YHSI site and protection buffer are outside of existing NAR ROW or outside of new NAR ROW	17-15ASR 24-37ASR	<p>KfVj-5 is located approximately 320 m off the proposed NAR ROW where it will not be disturbed by NAR construction. Continued avoidance is recommended.</p>	<ol style="list-style-type: none"> 1. Heritage site protection buffer 2. Heritage site protection buffers will be identified on construction or surface disturbance maps 3. Heritage site protection buffer flagged prior to construction, surface disturbance or vegetation clearing (where site is located equal to or less than 100 m from surface or vegetation clearing area) 3. No ground disturbing work within heritage protection buffer 4. Quarterly inspections (when operating and surface clearing is commencing) to confirm barriers/flagging (where site is located equal to or less than 100 m from surface or vegetation clearing area) 5. Proponent-led, annual review of ground clearing activities against known heritage sites and areas of potential 	Heritage site avoided
KfVj-12	Coffee Exploration Project	Quartz Mining License & Class 4 Mining Land Use Permit	Heritage/YHSI site and protection buffer are outside of existing NAR ROW or outside of new NAR ROW	24-37ASR	<p>Avoidance is recommended for this newly recorded site. If avoidance is deemed to be infeasible, then further assessment (e.g. additional shovel testing, systematic data recovery excavations, detailed site specific buffer modifications) should be conducted before the commencement of ground disturbing activities. The specific mitigative plan should be developed through consultation with the Yukon Government Heritage Resource Unit and First Nations.</p>	<ol style="list-style-type: none"> 1. Heritage site protection buffer 2. Heritage site protection buffers will be identified on construction or surface disturbance maps 3. Heritage site protection buffer flagged prior to construction, surface disturbance or vegetation clearing (where site is located equal to or less than 100 m from surface or vegetation clearing area) 3. No ground disturbing work within heritage protection buffer 4. Quarterly inspections (when operating and surface clearing is commencing) to confirm barriers/flagging (where site is located equal to or less than 100 m from surface or vegetation clearing area) 5. Proponent-led, annual review of ground clearing activities against known heritage sites and areas of potential 	Heritage site avoided

Borden/ YHSI #	General Project Location	Project Authorization nearest to Heritage/YHSI Site	Heritage/YHSI Location Relative to the Project and Coffee Exploration Project	HRIA Permit	Status of Heritage/YHSI Site from the HRIA	Heritage Resource Protection Measure	Impact Status
KfVj-1	NAR	Quartz Mining License & Class 4 Mining Land Use Permit	Heritage/YHSI site and protection buffer are outside of existing NAR ROW or outside of new NAR ROW	17-15ASR 22-27ASR	KfVj-1 is located approximately 200 m off the proposed NAR ROW where it will not be disturbed by NAR construction. Continued avoidance is recommended.	<ol style="list-style-type: none"> Heritage site protection buffer Heritage site protection buffers will be identified on construction or surface disturbance maps Heritage site protection buffer flagged prior to construction, surface disturbance or vegetation clearing (where site is located equal to or less than 100 m from surface or vegetation clearing area) No ground disturbing work within heritage protection buffer Quarterly inspections (when operating and surface clearing is commencing) to confirm barriers/flagging (where site is located equal to or less than 100 m from surface or vegetation clearing area) Proponent-led, annual review of ground clearing activities against known heritage sites and areas of potential 	Heritage site avoided
KfVj-6	NAR	Quartz Mining License & Class 4 Mining Land Use Permit	Heritage/YHSI site protection buffer overlaps with an existing ROW	17-15ASR	Site area and 30 m buffer zone are located outside of the NAR ROW. As such, it will not be impacted by NAR development. Continued avoidance is recommended. If avoidance is not feasible then further mitigative study is recommended.	<ol style="list-style-type: none"> Heritage site protection buffer Heritage site protection buffers will be identified on construction maps Heritage site protection buffer flagged prior to construction No ground disturbing work within heritage protection buffer Hand falling of vegetation within heritage protection buffer where it overlaps with ROW Monitor present during vegetation clearing and Chance Find Procedure implemented Quarterly inspections to confirm barriers/flagging (when operating and surface clearing is commencing) Proponent-led, annual review of ground clearing activities against known heritage sites and areas of potential 	Heritage site avoided
KfVj-7	NAR	Quartz Mining License & Class 4 Mining Land Use Permit	Heritage/YHSI site protection buffer overlaps with an existing ROW	17-15ASR	Site area and 30 m buffer zone are located outside of the NAR ROW. As such, it will not be impacted by NAR development. Continued avoidance is recommended. If avoidance is not feasible then further mitigative study is recommended.	<ol style="list-style-type: none"> Heritage site protection buffer Heritage site protection buffers will be identified on construction maps Heritage site protection buffer flagged prior to construction No ground disturbing work within heritage protection buffer Hand falling of vegetation within heritage protection buffer where it overlaps with ROW Monitor present during vegetation clearing and Chance Find Procedure implemented Quarterly inspections to confirm barriers/flagging (when operating and surface clearing is commencing) Proponent-led, annual review of ground clearing activities against known heritage sites and areas of potential 	Heritage site avoided
KfVj-10	NAR	Quartz Mining License & Class 4 Mining Land Use Permit	Heritage/YHSI site and protection buffer are outside of existing NAR ROW or outside of new NAR ROW	24-37ASR	Avoidance is recommended for this newly recorded site. If avoidance is deemed to be infeasible, then further assessment (e.g. additional shovel testing, systematic data recovery excavations, detailed site specific buffer modifications) should be conducted before the commencement of ground disturbing activities. The specific mitigative plan should be developed through consultation with the Yukon Government Heritage Resource Unit and First Nations.	<ol style="list-style-type: none"> Heritage site protection buffer Heritage site protection buffers will be identified on construction or surface disturbance maps Heritage site protection buffer flagged prior to construction, surface disturbance or vegetation clearing (where site is located equal to or less than 100 m from surface or vegetation clearing area) No ground disturbing work within heritage protection buffer Quarterly inspections (when operating and surface clearing is commencing) to confirm barriers/flagging (where site is located equal to or less than 100 m from surface or vegetation clearing area) Proponent-led, annual review of ground clearing activities against known heritage sites and areas of potential 	Heritage site avoided
KfVj-11	NAR	Quartz Mining License & Class 4 Mining Land Use Permit	Heritage/YHSI site and protection buffer are outside of existing NAR ROW or outside of new NAR ROW	24-37ASR	Avoidance is recommended for this newly recorded site. If avoidance is deemed to be infeasible, then further assessment (e.g. additional shovel testing, systematic data recovery excavations, detailed site specific buffer modifications) should be conducted before the commencement of ground disturbing activities. The specific mitigative plan should be developed through consultation with the Yukon Government Heritage Resource Unit and First Nations.	<ol style="list-style-type: none"> Heritage site protection buffer Heritage site protection buffers will be identified on construction or surface disturbance maps Heritage site protection buffer flagged prior to construction, surface disturbance or vegetation clearing (where site is located equal to or less than 100 m from surface or vegetation clearing area) No ground disturbing work within heritage protection buffer Quarterly inspections (when operating and surface clearing is commencing) to confirm barriers/flagging (where site is located equal to or less than 100 m from surface or vegetation clearing area) Proponent-led, annual review of ground clearing activities against known heritage sites and areas of potential 	Heritage site avoided

Borden/ YHSI #	General Project Location	Project Authorization nearest to Heritage/YHSI Site	Heritage/YHSI Location Relative to the Project and Coffee Exploration Project	HRIA Permit	Status of Heritage/YHSI Site from the HRIA	Heritage Resource Protection Measure	Impact Status
115J/14/0 06	Coffee Camp	Quartz Mining License & Class 4 Mining Land Use Permit	Heritage/YHSI Site is located within Coffee Mine Site boundaries	22-27ASR	This site is protected by a 30 m heritage protection buffer and will continue to be avoided.	<ol style="list-style-type: none"> Heritage site protection buffer Heritage site protection buffers will be identified on construction or surface disturbance maps Heritage site protection buffer flagged prior to construction, surface disturbance or vegetation clearing (where site is located equal to or less than 100 m from surface or vegetation clearing area) No ground disturbing work within heritage protection buffer Quarterly inspections (when operating and surface clearing is commencing) to confirm barriers/flagging (where site is located equal to or less than 100 m from surface or vegetation clearing area) Proponent-led, annual review of ground clearing activities against known heritage sites and areas of potential 	Heritage site avoided
115J/14/0 05	Coffee Camp	Located on fee simple land owned by the Proponent	Heritage/YHSI site located at Coffee Camp	22-27ASR	Following the 2022 site visit with Lee Whalen (Senior Historic Sites Planner), the Proponent requests that YSHI update the site record to reflect that only one cabin remains and it is in a deteriorated state.	The Proponent will provide formal notice and request to Yukon Historic Sites to initiate an update to the YSHI site listing and will provide formal notice and request prior to any future changes to the remaining cabin, including improvements, stabilization, or removal.	Heritage site avoided
115J/14/0 01	Coffee Camp	Located on fee simple land owned by the Proponent	Heritage/YHSI site located at Coffee Camp	22-27ASR	Following the 2022 site visit with Lee Whalen (Senior Historic Sites Planner), the Proponent requests that YSHI update the site record to reflect that this site is not present.	This site is not present in its location as described.	Site has been previously impacted
KeVi-6	Coffee Exploration Project	Class 4 Mining Land Use Permit	Heritage/YHSI Site located in Coffee Exploration Project Boundaries	13-06ASR	Avoidance of the site area is recommended. If avoidance is not feasible then further mitigative study is recommended.	<ol style="list-style-type: none"> Heritage site protection buffer Heritage site protection buffers will be identified on construction or surface disturbance maps Heritage site protection buffer flagged prior to construction, surface disturbance or vegetation clearing (where site is located equal to or less than 100 m from surface or vegetation clearing area) No ground disturbing work within heritage protection buffer Quarterly inspections (when operating and surface clearing is commencing) to confirm barriers/flagging (where site is located equal to or less than 100 m from surface or vegetation clearing area) Proponent-led, annual review of ground clearing activities against known heritage sites and areas of potential 	Site avoided
KeVi-7	Coffee Exploration Project	Class 4 Mining Land Use Permit	Heritage/YHSI Site located in Coffee Exploration Project Boundaries		Avoidance of the site area is recommended. If avoidance is not feasible then further mitigative study is recommended.	<ol style="list-style-type: none"> Heritage site protection buffer Heritage site protection buffers will be identified on construction or surface disturbance maps Heritage site protection buffer flagged prior to construction, surface disturbance or vegetation clearing (where site is located equal to or less than 100 m from surface or vegetation clearing area) No ground disturbing work within heritage protection buffer Quarterly inspections (when operating and surface clearing is commencing) to confirm barriers/flagging (where site is located equal to or less than 100 m from surface or vegetation clearing area) Proponent-led, annual review of ground clearing activities against known heritage sites and areas of potential 	Site avoided

Borden/ YHSI #	General Project Location	Project Authorization nearest to Heritage/YHSI Site	Heritage/YHSI Location Relative to the Project and Coffee Exploration Project	HRIA Permit	Status of Heritage/YHSI Site from the HRIA	Heritage Resource Protection Measure	Impact Status
KeVi-9	Coffee Exploration Project	Class 4 Mining Land Use Permit	Heritage/YHSI Site located in Coffee Exploration Project Boundaries		Avoidance of the site area is recommended. If avoidance is not feasible then further mitigative study is recommended.	<ol style="list-style-type: none"> 1. Heritage site protection buffer 2. Heritage site protection buffers will be identified on construction or surface disturbance maps 3. Heritage site protection buffer flagged prior to construction, surface disturbance or vegetation clearing (where site is located equal to or less than 100 m from surface or vegetation clearing area) 3. No ground disturbing work within heritage protection buffer 4. Quarterly inspections (when operating and surface clearing is commencing) to confirm barriers/flagging (where site is located equal to or less than 100 m from surface or vegetation clearing area) 5. Proponent-led, annual review of ground clearing activities against known heritage sites and areas of potential 	Site avoided
KeVi-16	Coffee Exploration Project	Class 4 Mining Land Use Permit	Heritage/YHSI Site located in Coffee Exploration Project Boundaries	21-36ASR	Avoidance of the site area is recommended. If avoidance is not feasible then further mitigative study is recommended.	<ol style="list-style-type: none"> 1. Heritage site protection buffer 2. Heritage site protection buffers will be identified on construction or surface disturbance maps 3. Heritage site protection buffer flagged prior to construction, surface disturbance or vegetation clearing (where site is located equal to or less than 100 m from surface or vegetation clearing area) 3. No ground disturbing work within heritage protection buffer 4. Quarterly inspections (when operating and surface clearing is commencing) to confirm barriers/flagging (where site is located equal to or less than 100 m from surface or vegetation clearing area) 5. Proponent-led, annual review of ground clearing activities against known heritage sites and areas of potential 	Heritage site avoided
KeVi-17	Coffee Exploration Project	Class 4 Mining Land Use Permit	Heritage/YHSI Site located in Coffee Exploration Project Boundaries	21-36ASR	Avoidance of the site area is recommended. If avoidance is not feasible then further mitigative study is recommended.	<ol style="list-style-type: none"> 1. Heritage site protection buffer 2. Heritage site protection buffers will be identified on construction or surface disturbance maps 3. Heritage site protection buffer flagged prior to construction, surface disturbance or vegetation clearing (where site is located equal to or less than 100 m from surface or vegetation clearing area) 3. No ground disturbing work within heritage protection buffer 4. Quarterly inspections (when operating and surface clearing is commencing) to confirm barriers/flagging (where site is located equal to or less than 100 m from surface or vegetation clearing area) 5. Proponent-led, annual review of ground clearing activities against known heritage sites and areas of potential 	Heritage site avoided
KeVj-1	Coffee Exploration Project	Class 4 Mining Land Use Permit	Heritage/YHSI Site located in Coffee Exploration Project Boundaries	11-03ASR	Avoidance of the site area is recommended. If avoidance is not feasible then further mitigative study is recommended.	<ol style="list-style-type: none"> 1. Heritage site protection buffer 2. Heritage site protection buffers will be identified on construction or surface disturbance maps 3. Heritage site protection buffer flagged prior to construction, surface disturbance or vegetation clearing (where site is located equal to or less than 100 m from surface or vegetation clearing area) 3. No ground disturbing work within heritage protection buffer 4. Quarterly inspections (when operating and surface clearing is commencing) to confirm barriers/flagging (where site is located equal to or less than 100 m from surface or vegetation clearing area) 5. Proponent-led, annual review of ground clearing activities against known heritage sites and areas of potential 	Heritage site avoided

Borden/ YHSI #	General Project Location	Project Authorization nearest to Heritage/YHSI Site	Heritage/YHSI Location Relative to the Project and Coffee Exploration Project	HRIA Permit	Status of Heritage/YHSI Site from the HRIA	Heritage Resource Protection Measure	Impact Status
KfVj-4	Coffee Exploration Project	Class 4 Mining Land Use Permit	Heritage/YHSI Site located in Coffee Exploration Project Boundaries	14-12ASR	KfVj-4 is considered an isolated find likely related to temporary camping while either hunting or travelling to and from the uplands. Further testing at the site is not recommended. Note: these recommendations are by Christian Thomas in the 14-12ASR reporting.	<ol style="list-style-type: none"> 1. Heritage site protection buffer 2. Heritage site protection buffers will be identified on construction or surface disturbance maps 3. Heritage site protection buffer flagged prior to construction, surface disturbance or vegetation clearing (where site is located equal to or less than 100 m from surface or vegetation clearing area) 3. No ground disturbing work within heritage protection buffer 4. Quarterly inspections (when operating and surface clearing is commencing) to confirm barriers/flagging (where site is located equal to or less than 100 m from surface or vegetation clearing area) 5. Proponent-led, annual review of ground clearing activities against known heritage sites and areas of potential 	Heritage site avoided
KfVk-5	Coffee Exploration Project	Class 4 Mining Land Use Permit	Heritage/YHSI Site located in Coffee Exploration Project Boundaries	11-03ASR	Avoidance of the site area is recommended. If avoidance is not feasible then further mitigative study is recommended.	<ol style="list-style-type: none"> 1. Heritage site protection buffer 2. Heritage site protection buffers will be identified on construction or surface disturbance maps 3. Heritage site protection buffer flagged prior to construction, surface disturbance or vegetation clearing (where site is located equal to or less than 100 m from surface or vegetation clearing area) 3. No ground disturbing work within heritage protection buffer 4. Quarterly inspections (when operating and surface clearing is commencing) to confirm barriers/flagging (where site is located equal to or less than 100 m from surface or vegetation clearing area) 5. Proponent-led, annual review of ground clearing activities against known heritage sites and areas of potential 	Heritage site avoided
KfVk-6	Coffee Exploration Project	Class 4 Mining Land Use Permit	Heritage/YHSI Site located in Coffee Exploration Project Boundaries	19-23ASR	Avoidance is recommended. If avoidance is not feasible then further assessment (e.g. systematic data recovery excavation) should be conducted before ground disturbing activities are allowed to proceed within the site area and avoidance buffer.	<ol style="list-style-type: none"> 1. Heritage site protection buffer 2. Heritage site protection buffers will be identified on construction or surface disturbance maps 3. Heritage site protection buffer flagged prior to construction, surface disturbance or vegetation clearing (where site is located equal to or less than 100 m from surface or vegetation clearing area) 3. No ground disturbing work within heritage protection buffer 4. Quarterly inspections (when operating and surface clearing is commencing) to confirm barriers/flagging (where site is located equal to or less than 100 m from surface or vegetation clearing area) 5. Proponent-led, annual review of ground clearing activities against known heritage sites and areas of potential 	Heritage site avoided
KfVk-7	Coffee Exploration Project	Class 4 Mining Land Use Permit	Heritage/YHSI Site located in Coffee Exploration Project Boundaries	19-23ASR	Avoidance is recommended. If avoidance is not feasible then further assessment (e.g. systematic data recovery excavation) should be conducted before ground disturbing activities are allowed to proceed within the site area and avoidance buffer.	<ol style="list-style-type: none"> 1. Heritage site protection buffer 2. Heritage site protection buffers will be identified on construction or surface disturbance maps 3. Heritage site protection buffer flagged prior to construction, surface disturbance or vegetation clearing (where site is located equal to or less than 100 m from surface or vegetation clearing area) 3. No ground disturbing work within heritage protection buffer 4. Quarterly inspections (when operating and surface clearing is commencing) to confirm barriers/flagging (where site is located equal to or less than 100 m from surface or vegetation clearing area) 5. Proponent-led, annual review of ground clearing activities against known heritage sites and areas of potential 	Heritage site avoided

Borden/ YHSI #	General Project Location	Project Authorization nearest to Heritage/YHSI Site	Heritage/YHSI Location Relative to the Project and Coffee Exploration Project	HRIA Permit	Status of Heritage/YHSI Site from the HRIA	Heritage Resource Protection Measure	Impact Status
KfVvk-8	Coffee Exploration Project	Class 4 Mining Land Use Permit	Heritage/YHSI Site located in Coffee Exploration Project Boundaries	19-23ASR	Avoidance is recommended. If avoidance is not feasible then further assessment (e.g. systematic data recovery excavation) should be conducted before ground disturbing activities are allowed to proceed within the site area and avoidance buffer.	1. Heritage site protection buffer 2. Heritage site protection buffers will be identified on construction or surface disturbance maps 3. Heritage site protection buffer flagged prior to construction, surface disturbance or vegetation clearing (where site is located equal to or less than 100 m from surface or vegetation clearing area) 3. No ground disturbing work within heritage protection buffer 4. Quarterly inspections (when operating and surface clearing is commencing) to confirm barriers/flagging (where site is located equal to or less than 100 m from surface or vegetation clearing area) 5. Proponent-led, annual review of ground clearing activities against known heritage sites and areas of potential	Heritage site avoided
KfVvk-10	Coffee Exploration Project	Class 4 Mining Land Use Permit	Heritage/YHSI Site located in Coffee Exploration Project Boundaries	22-27ASR	Avoidance is recommended. If avoidance is not feasible then further assessment (e.g. systematic data recovery excavation) should be conducted before ground disturbing activities are allowed to proceed within the site area and avoidance buffer.	1. Heritage site protection buffer 2. Heritage site protection buffers will be identified on construction or surface disturbance maps 3. Heritage site protection buffer flagged prior to construction, surface disturbance or vegetation clearing (where site is located equal to or less than 100 m from surface or vegetation clearing area) 3. No ground disturbing work within heritage protection buffer 4. Quarterly inspections (when operating and surface clearing is commencing) to confirm barriers/flagging (where site is located equal to or less than 100 m from surface or vegetation clearing area) 5. Proponent-led, annual review of ground clearing activities against known heritage sites and areas of potential	Heritage site avoided
KfVvk-11	Coffee Exploration Project	Class 4 Mining Land Use Permit	Heritage/YHSI Site located in Coffee Exploration Project Boundaries	23-16ASR	Avoidance is recommended. If avoidance is not feasible then further assessment (e.g. systematic data recovery excavation) should be conducted before ground disturbing activities are allowed to proceed within the site area and avoidance buffer.	1. Heritage site protection buffer 2. Heritage site protection buffers will be identified on construction or surface disturbance maps 3. Heritage site protection buffer flagged prior to construction, surface disturbance or vegetation clearing (where site is located equal to or less than 100 m from surface or vegetation clearing area) 3. No ground disturbing work within heritage protection buffer 4. Quarterly inspections (when operating and surface clearing is commencing) to confirm barriers/flagging (where site is located equal to or less than 100 m from surface or vegetation clearing area) 5. Proponent-led, annual review of ground clearing activities against known heritage sites and areas of potential	Site avoided
KfVvk-9	Coffee Exploration Project	Class 4 Mining Land Use Permit	Heritage/YHSI Site located in Coffee Exploration Project Boundaries	22-27ASR	Avoidance is recommended. If avoidance is not feasible then further assessment (e.g. systematic data recovery excavation) should be conducted before ground disturbing activities are allowed to proceed within the site area and avoidance buffer.	1. Heritage site protection buffer 2. Heritage site protection buffers will be identified on construction or surface disturbance maps 3. Heritage site protection buffer flagged prior to construction, surface disturbance or vegetation clearing (where site is located equal to or less than 100 m from surface or vegetation clearing area) 3. No ground disturbing work within heritage protection buffer 4. Quarterly inspections (when operating and surface clearing is commencing) to confirm barriers/flagging (where site is located equal to or less than 100 m from surface or vegetation clearing area) 5. Proponent-led, annual review of ground clearing activities against known heritage sites and areas of potential	Heritage site avoided

Borden/ YHSI #	General Project Location	Project Authorization nearest to Heritage/YHSI Site	Heritage/YHSI Location Relative to the Project and Coffee Exploration Project	HRIA Permit	Status of Heritage/YHSI Site from the HRIA	Heritage Resource Protection Measure	Impact Status
KfVj-2	Mine Site Footprint	Quartz Mining License	Heritage/YHSI Site is located within Coffee Mine Site boundaries	11-03ASR 22-27ASR	Avoidance of the site area is recommended. If avoidance is not feasible then further mitigative study is recommended.	<ol style="list-style-type: none"> 1. Heritage site protection buffer 2. Heritage site protection buffers will be identified on construction or surface disturbance maps 3. Heritage site protection buffer flagged prior to construction, surface disturbance or vegetation clearing (where site is located equal to or less than 100 m from surface or vegetation clearing area) 3. No ground disturbing work within heritage protection buffer 4. Quarterly inspections (when operating and surface clearing is commencing) to confirm barriers/flagging (where site is located equal to or less than 100 m from surface or vegetation clearing area) 5. Proponent-led, annual review of ground clearing activities against known heritage sites and areas of potential 	Heritage site avoided
KfVj-3	Mine Site Footprint	Quartz Mining License & Class 4 Mining Land Use Permit	Heritage/YHSI Site is located within Coffee Mine Site boundaries	11-03ASR 23-34ASR	Avoidance of the site area is recommended. If avoidance is not feasible then further mitigative study is recommended.	<ol style="list-style-type: none"> 1. Heritage site protection buffer 2. Heritage site protection buffers will be identified on construction or surface disturbance maps 3. Heritage site protection buffer flagged prior to construction, surface disturbance or vegetation clearing (where site is located equal to or less than 100 m from surface or vegetation clearing area) 3. No ground disturbing work within heritage protection buffer 4. Quarterly inspections (when operating and surface clearing is commencing) to confirm barriers/flagging (where site is located equal to or less than 100 m from surface or vegetation clearing area) 5. Proponent-led, annual review of ground clearing activities against known heritage sites and areas of potential 	Heritage site avoided
KfVk-1	Mine Site Footprint	Quartz Mining License	Heritage/YHSI Site is located within Coffee Mine Site boundaries	11-03ASR 23-34ASR	Avoidance of the site area is recommended. If avoidance is not feasible then further mitigative study is recommended.	<ol style="list-style-type: none"> 1. Heritage site protection buffer 2. Heritage site protection buffers will be identified on construction or surface disturbance maps 3. Heritage site protection buffer flagged prior to construction, surface disturbance or vegetation clearing (where site is located equal to or less than 100 m from surface or vegetation clearing area) 3. No ground disturbing work within heritage protection buffer 4. Quarterly inspections (when operating and surface clearing is commencing) to confirm barriers/flagging (where site is located equal to or less than 100 m from surface or vegetation clearing area) 5. Proponent-led, annual review of ground clearing activities against known heritage sites and areas of potential 	Heritage site avoided
KfVk-2	Mine Site Footprint	Quartz Mining License	Heritage/YHSI Site is located within Coffee Mine Site boundaries	11-03ASR 23-34ASR	Avoidance of the site area is recommended. If avoidance is not feasible then further mitigative study is recommended.	<ol style="list-style-type: none"> 1. Heritage site protection buffer 2. Heritage site protection buffers will be identified on construction or surface disturbance maps 3. Heritage site protection buffer flagged prior to construction, surface disturbance or vegetation clearing (where site is located equal to or less than 100 m from surface or vegetation clearing area) 3. No ground disturbing work within heritage protection buffer 4. Quarterly inspections (when operating and surface clearing is commencing) to confirm barriers/flagging (where site is located equal to or less than 100 m from surface or vegetation clearing area) 5. Proponent-led, annual review of ground clearing activities against known heritage sites and areas of potential 	Heritage site avoided

Borden/ YHSI #	General Project Location	Project Authorization nearest to Heritage/YHSI Site	Heritage/YHSI Location Relative to the Project and Coffee Exploration Project	HRIA Permit	Status of Heritage/YHSI Site from the HRIA	Heritage Resource Protection Measure	Impact Status
KfVk-3	Mine Site Footprint	Quartz Mining License	Heritage/YHSI Site is located within Coffee Mine Site boundaries	11-03ASR 23-34ASR	Avoidance of the site area is recommended. If avoidance is not feasible then further mitigative study is recommended.	<ol style="list-style-type: none"> 1. Heritage site protection buffer 2. Heritage site protection buffers will be identified on construction or surface disturbance maps 3. Heritage site protection buffer flagged prior to construction, surface disturbance or vegetation clearing (where site is located equal to or less than 100 m from surface or vegetation clearing area) 3. No ground disturbing work within heritage protection buffer 4. Quarterly inspections (when operating and surface clearing is commencing) to confirm barriers/flagging (where site is located equal to or less than 100 m from surface or vegetation clearing area) 5. Proponent-led, annual review of ground clearing activities against known heritage sites and areas of potential 	Heritage site avoided
KfVk-4	Mine Site Footprint	Quartz Mining License	Heritage/YHSI Site is located within Coffee Mine Site boundaries	23-34ASR	Avoidance of the site area is recommended. If avoidance is not feasible then further mitigative study is recommended.	<ol style="list-style-type: none"> 1. Heritage site protection buffer 2. Heritage site protection buffers will be identified on construction or surface disturbance maps 3. Heritage site protection buffer flagged prior to construction, surface disturbance or vegetation clearing (where site is located equal to or less than 100 m from surface or vegetation clearing area) 3. No ground disturbing work within heritage protection buffer 4. Quarterly inspections (when operating and surface clearing is commencing) to confirm barriers/flagging (where site is located equal to or less than 100 m from surface or vegetation clearing area) 5. Proponent-led, annual review of ground clearing activities against known heritage sites and areas of potential 	Heritage site avoided

APPENDIX C

Heritage Resources Contact List

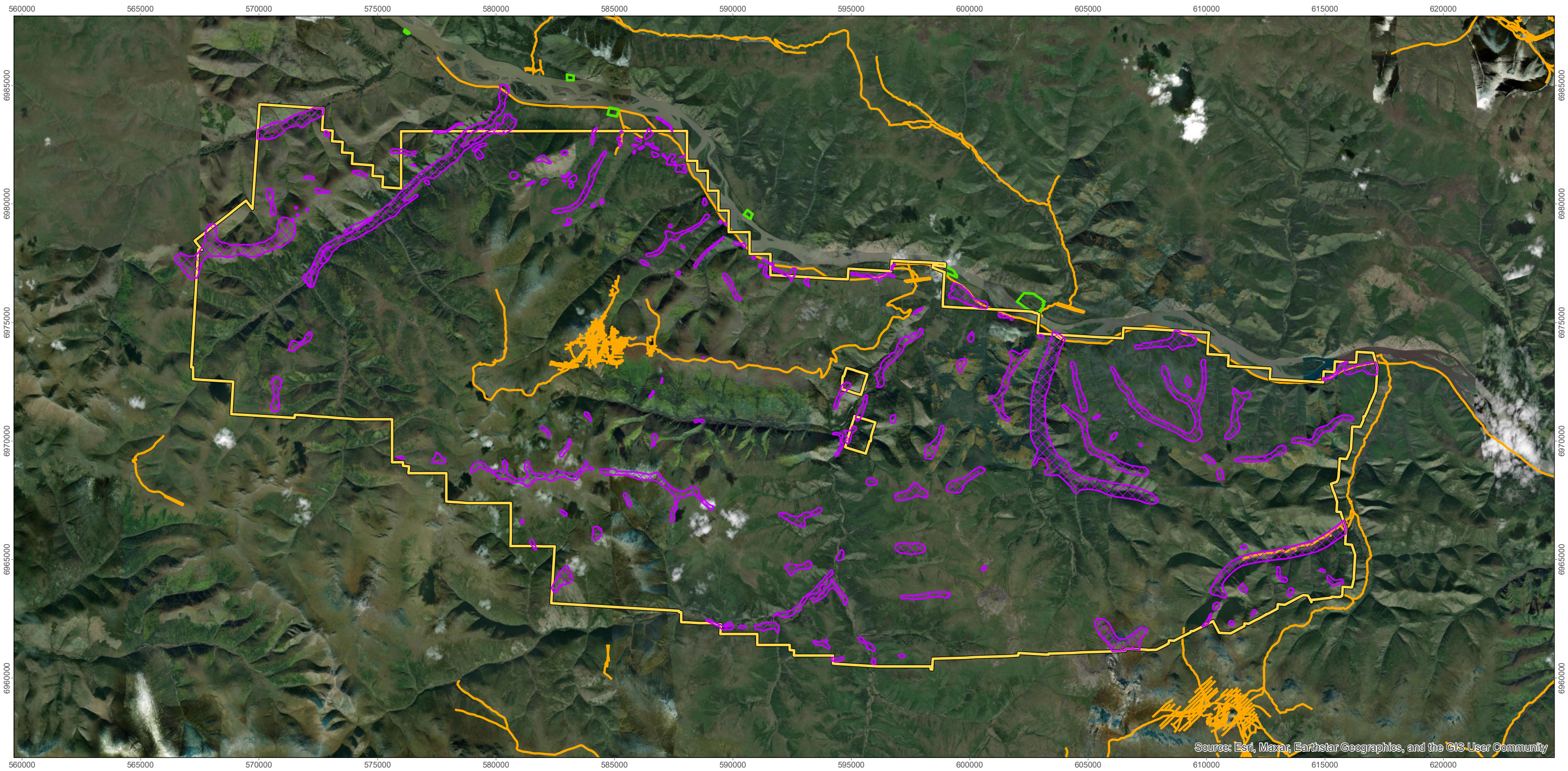
Heritage Resources Contact List

Company	Contact Name	Title/Role	Contact Information	
			Phone Number	Email Address
Coffee Project	Jennie Gjertsen or Jasmin Dobson	VP Sustainability and External Relations; VP Environment and Permitting	778-837-9785; 867-334-7698	jgertsen@fuertemetals.com; jdobson@fuertemetals.com;
Ecofor	Tim Bennett	Newmont Project Archaeologist	403-667-9502	tim.bennett@ecofor.ca
Tr'ondëk Hwëch'in	Shari Borgford and Georgette McLeod	Director, Resource Development and Strategic Initiatives; Director Heritage	867-334-3605; 867-994-7100	rdsi.director@trondek.ca; georgette.mcleod@trondek.ca
First Nation of Natcho Nyäk Dun	Ellen Marcotte and Teresa Samson	Director of Lands and Resources; Heritage Manager	867 996-2265 ext. 143 and 133	lands.director@nndfn.com and heritagemgr@nndfn.com
Selkirk First Nation	Patrick McGinty	Director Lands, Resources and Heritage	867-537-3331 ext. 606	mcgintyp@selkirkfn.com
White River First Nation	Odin Miller	Lands Manager	867-668-4121	lands.coord@wrfn.ca
YG Energy Mines and Resources, Mineral Resources Branch	Janet Bell-MacDonald; Mark Meyer	Chief of Mining Land Use/Manager of Mining Lands; Director Mineral Resources	867-993-3750	janet.bell-macdonald@yukon.ca; mark.meyer@yukon.ca

Company	Contact Name	Title/Role	Contact Information	
			Phone Number	Email Address
YG Heritage Resources	Ty Heffner	Yukon Government Archaeologist	867-667-3771	ty.heffner@yukon.ca
Yukon Palaeontology Program	Grant Zazula	Yukon Government Palaeontologist	867-667-8089	Grant.Zazula@gov.yk.ca
YG, Energy Mines and Resources, Land Management Branch	Brenda Sproule	Manager, Land Use	867-667-3173	brenda.sproule@yukon.ca
YG, Highways and Public Works	Andrew McCoy	Manager, Environmental Affairs	867-336-1004	andrew.mccoy@yukon.ca
RCMP Dawson City	n/a	n/a	Non-Emergency: 867-993-2677 Emergency: 911	
RCMP Whitehorse	n/a	N/a	Non-Emergency: 867-667-5555 Emergency: 911	

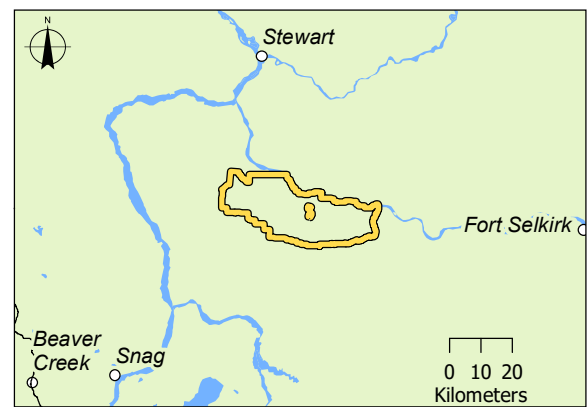
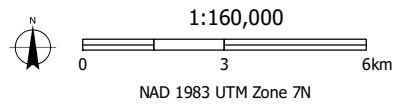
APPENDIX D


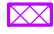

Areas of Potential Map



Source: Esri, Maxar, Earthstar Geographics, and the GIS User Community

2025 Coffee Exploration Project Unassessed AOPs



-  Road
-  Outstanding AOP
-  Coffee Exploration Project Property Boundary
-  First Nation Settlement Land

Disclaimer: This product is for informational purposes only and may not have been prepared for or be suitable for legal, engineering, or surveying purposes. The base data layers have been obtained from the British Columbia Geographic Warehouse (BCGW)



Document Path: O:\GIS_PROJECTS\2024\Cultural Resources\Goldcorp Kamminak\XDCoffeeGoldNar_HRIA_Landscape_2025_UnassessedAOP.mxd