



ALEXCO

NOISE ABATEMENT PLAN

QML-0009

November 2009

BELLEKENO PROJECT



ACCESS
CONSULTING GROUP

Table of Contents

1.0	INTRODUCTION.....	1
1.1	Context.....	1
2.0	Potential Noise Sources	2
2.1	Other Potential Noise Sources.....	5
3.0	Potential Noise Receivers	6
4.0	Noise Impact Study.....	7
5.0	Remediation and Mitigations for Noise Impacts	8
6.0	References.....	9

List of Tables

Table 1	Proposed Activities, Equipment and Noise Emission Level	3
Table 2	Summary of Alexco Potential Noise Sources and Emission Source Type	5
Table 3	Other Potential Noise Emitters in the Keno Area	6
Table 4	Distance between Noise Emission Sources and Potential Receivers.....	7

Attachments

Attachment 1 Memorandum Regarding Keno City Preliminary Sound Monitoring

1.0 INTRODUCTION

The following Noise Abatement Plan has been assembled to identify potential noise sources during development and production and noise receivers and define a protocol for monitoring and assessing noise levels as described in the YESAB Decision Document 2009-0030. Finally, measures for mitigation and reduction of noise emissions and how these measures will be incorporated into the project design and implementation are described. The primary goal of this plan is to reduce and mitigate impacts to local residents and the environment resulting from noise produced during the development and operations of the Bellekeno mine and Flame and Moth mill.

1.1 Context

Increased noise from the Flame and Moth mill site has been expressed as a concern for Keno City residents and has been reflected in the YESAA Decision Document.

Noise is measured in terms of decibels. On the logarithmic **decibel scale**, the smallest audible sound (near total silence) is 0 dB. A sound 10 times more powerful is 10 dB. Here are some common sounds and their decibel ratings:

Near total silence - 0 dB

A whisper - 15 dB

Normal conversation - 60 dB

A lawnmower - 90 dB

A car horn - 110 dB

A rock concert or a jet engine - 120 dB

A gunshot or firecracker - 140 dB

All of these decibel examples are from the position of standing next to the source of the noise. The level of the noise coming from the crushing plant at the Flame and Moth site is estimated to be approximately 90 dB (noise level standing next to the crushing plant ~3 m). With the construction of noise sound barrier walls or panels around the crushing facility, the noise

directly on the outside of the noise sound barrier (~3 m) is estimated to be reduced by approximately 10 times or 10 dB. The intensity of sound diminishes greatly the further a person is from the source of the noise. Sound intensity reduces inversely to the distance away from the source.

If the distance from the source of the noise is doubled (i.e. from 3 m to 6 m) the intensity of the noise is reduced by 4 times. If the distance from the noise goes from 3 m to 30 m, the intensity of the noise is reduced by 100 times. The distance from Keno City to the Flame and Moth mill location is approximately 1.5 km. The decrease in noise level from a distance of 10 meters from the crushing plant to Keno City is calculated as approximately -44 dB. This results in an estimated noise level in Keno City from the crushing facility of ~36 dB.

The crushing facility has a throughput capacity of 65 tph. Although the crusher is oversized compared to the daily ore tonnes, this is the smallest type of crushing plant available. Since the crushing facility can process significantly more ore tonnes than will be mined it will not operate continuously, even during the day shift hours. At the higher mining rate of 400 t/d, the crushing plant will need to process ore for approximately 6 hours per day on day shift only. This results in a periodic crushing operation and will not create a continuous 24/7 additional background noise condition.

2.0 Potential Noise Sources

As part of the impact assessment described in the Final Evaluation Report on the YESAB assessment of the project (see YESAB, 2009-0030), a detailed desktop study predicting noise impacts resulting from the project were described. A number of parameters and assumptions used in this study are presented here. A brief summary of the YESAB desktop noise study is also included in Appendix A.

Potential noise sources were modeled in the YESAB sound study based on three sources. These sources are considered reasonable by Alexco and are identified here as:

1. Crushing operations;
2. Mill infrastructure;

3. Dry stack tailing facilities;
4. Mine site operations, and;
5. Noise resulting from transportation along haul roads.

Table 1, from the YESAB sound study summarizing proposed activities, equipment and noise emission levels is presented here:

Table 1 Proposed Activities, Equipment and Noise Emission Level

Activity and Equipment	Equipment Detail	Noise Level (dB) from CA/T Project Study (1994) measured 15m from source	Other Noise Level (dB) from other references measured at source	Proposed Noise Mitigations
1. Crushing Operations				
– Occurs during dayshift (7am – 7pm)				
– Point source: located 850m from nearest lot; 50m from Mill Infrastructure				
- Primary Jaw and Secondary Cone	- Trio 20" x 36" jaw crusher, 75 kw. - Simons 4 ¼ shorthead cone crusher, 149 kw		115	-18 (-3 for perimeter barrier; -15 for building barrier)
- Screen, Hopper and Conveyor	Unknown		115	-18 (-3 for perimeter barrier; -15 for building barrier)
- Loader Feed	Primary direct haul dump into hopper, secondary feed with Cat 938 loader	86		-18 (-3 for perimeter barrier; -15 for building barrier)
2. Mill Infrastructure				
– Occurs during dayshift (7am – 7pm)				
– Point Source: located 800m from nearest lot; 50m from Crushing Operations				
- Insulated Mill building	Internal equipment including tire-type ball mill, pumps, reagent tanks, agitators, filter press, and auxillary power generator (350kva Cat to operate internal mixers, lights, heat trace and pumps)		90 – 105 = average of 98	-10 (-10 for insulated enclosed building and doors facing away from Keno)
3. Dry Stack Tailings Facility				
– Occurs during dayshift (7am – 7pm)				
– Point source: located 775m from nearest lot; 60-250m from Mill Infrastructure and Crushing Operations				
- Tailings management	Cat 938 wheel loader	86		

ALEXCO KENO HILL MINING CORP. BELLEKENO PROJECT
NOISE ABATEMENT PLAN –QML-0009

- Dry Stack management/packing	Cat 815f Soil Compactor	82		
- Dry Stack management/spreading	Cat D6 dozer	85		
4. Mine Site				
– Occurs 24/7. Specific activities (e.g. explosives, ore haul to mill) only occur during dayshift.				
– Point source: located at Bellekeno East 3km from Keno				
- Surface and underground operations*	D8K Dozer	85		
	Cat 235 Excavator	85		
	Cat 16H grader	85		
	988B Loader	80		
	Tractor Trailer	84		
	30 tonne Crane	85		
	Cat 950 Loader	80		
5. Transportation				
– Occurs 24/7. Specific activities (e.g. haulage of material between mine and mill) only occur during dayshift				
– Non-point source				
- Road maintenance	Cat 14 H motor grader	85		
- Ore/tails haul	Volvo A30E articulated trucks	88		
	Volvo A30E articulated trucks	88		
- Concentrate haulage	Highway tractor-trailer	88		
	Highway tractor-trailer	88		
	Highway tractor-trailer	88		
- Staff Transit between Elsa, Mine Site and Millsite/DSTF	Van		80	

For the purposes of modeling, due to their close proximity at the Flame and Moth mill site, the first three potential noise emitters (crushing operations, mill infrastructure and dry stack tailing facilities) are considered as a single noise emitter. As summarized in Table 2, the purposes of consideration, that leaves three potential noise sources.

Table 2 Summary of Alexco Potential Noise Sources and Emission Source Type

Noise Emission Source	Noise Emitters	Noise Emission Source Type
Flame and Moth Mill Site	Crushing operations, mill infrastructure, DSTF construction and operations, ore and concentrate haul and loadouts	Point (approximately)
Bellekeno Mine Site	Heavy equipment from surface and underground equipment	Point
Haul Road	Haul and mine traffic	Line

2.1 Other Potential Noise Sources

Alexco's Bellekeno project is one of a number of industrial mining or exploration (both placer and quartz) undertakings which have been using Keno as a hub, or routing road or helicopter traffic through the area during the year. These endeavors also contribute to noise levels around the project area.

Yukon Government department of Highways has a maintenance shop in Keno City and performs regular road maintenance activities on the Silver Trail highway, Duncan Creek Road, and other public roads in the area which periodically contribute to noise levels in the area.

Some local residents own or operate heavy equipment which are regularly operated near Keno City and contribute to noise levels.

Especially during the summer season, tourists with RVs and ATVs utilize Keno City as a base for exploration and adventure. These users also contribute to noise around the project area especially during the peak tourist season. A summary of the other major industrial endeavors and other potential noise sources in the project area is provided in Table 3.

Table 3 Other Potential Noise Emitters in the Keno Area

Noise Emission Source	Noise Emitters	Noise Emission Source Type	Location
Placers Mining Operations	Heavy earthmoving equipment, Sluice Box, grizzly/trammel; light truck supply traffic	Point (heavy equipment), line (Lightning Creek supply traffic)	Lightning Creek/Thunder Gulch, Duncan Creek, Lightning Creek road through Keno City
Other Quartz Mining and Exploration Undertakings	Heavy earthmoving equipment, diamond drills, haul and supply traffic	Various	Various locations on and around Sourdough Hill, Galena Hill, Keno Hill and Mount Hinton
Monster Mining Corp.	Haul and supply traffic, helicopter traffic	Various	
YG Highways	Graders, plows, earthmoving equipment	Line	Duncan Creek Road, Silver Trail Highway, Keno City
Local Residents	ATVs, heavy equipment, trucks	Various	Various
Tourists	RVs, ATVs	Various	Various

3.0 Potential Noise Receivers

Residents of Keno City have been identified as primary potential noise receivers from all three potential noise sources. Although the YESAB desktop study considered noise effects from the Bellekeno Mine, Keno City Residents have not brought this forward as a concern due the distance between the potential emitter and receiver, and the fact that most mine noise emitter components at the Bellekeno mine will be underground and not be transmitted to surface.

Campers at the Keno City Campground have been identified as the primary potential receivers from noise resulting from haul traffic during the summer season during daytime hours (7:00 A.M. to 7:00 P.M.).

Bardusan Placers Ltd. is a potential noise receiver from operations at the Bellekeno Mine. However, Bardusan has not expressed any concern regarding potential noise effects. Because Bardusan is also an industrial undertaking utilizing heavy equipment, noise emissions resulting

from both operations is probably similar. Noise emission sources, potential receivers and approximate distances are summarized in Table 4 below.

Table 4 Distance between Noise Emission Sources and Potential Receivers

Noise Emission Source	Noise Receivers	Distance (approximate)
Flame and Moth Mill Site	Nearest Keno City Residence	~900m
	Furthest Keno City Residence	1.33 km
	Center of Keno City (Fire Hall)	1.16 km
Bellekeno Mine Site	Center of Keno City (Fire Hall)	2.5 km
	Bardusan Placer Ltd.	250 – 750m
Haul Road	Center of Keno City	250m
	Keno City Campground	100m

4.0 Noise Impact Study

During the YESAA assessment, the issue of noise was highlighted by assessors and reflected in the YG Decision Document issued July 10, 2009. The Decision Document calls for a Noise Impact Study (NIS) to be conducted prior to mining.

Alexco commits to undertaking a Noise Impact Study, as per the requirements set out in the Decision Document. Specifically, the NIS will:

- Analyze baseline conditions during conditions of low ambient noise.
- Calculate the potential noise emissions from all activities that generate significant noise.
- Calculate the noise emission level that the closest receiver may experience due to those activities. Consideration must be given to local environmental conditions (e.g. terrain, temperature inversions, and downwind conditions relative to sensitive receivers) and proposed mitigations.
- Calculate the cumulative noise emission of this project in combination with existing and proposed activities (e.g. care and maintenance, Keno City).

A noise abatement and management plan will be developed based on the results of the noise impact study. The plan will aim to achieve the following:

- Identify appropriate measures to reduce noise emissions.
- Incorporate these measures into project design and implementation.

Upon commencement of each block of operations (e.g. crusher; bypass construction; ore traffic), a verification study will be conducted. This will consist of continuous monitoring over a two week period. Monitoring will aim to capture the ambient noise levels at sensitive receivers, inclusive of what the project is contributing. If unacceptable noise levels are identified further measures to reduce the noise levels are required.

The first phase of the Noise Impact Study has been undertaken by Alexco staff in order to fulfill recommendation # 66 of the Decision Document. The results of this preliminary monitoring of baseline conditions during conditions of low ambient noise have been summarized in a memo prepared by Access Consulting Group for Alexco. This first phase of monitoring will help to instruct and guide the remainder of the Noise Impact Study prescribed in the Decision Document. The memo entitled “Keno City Preliminary Sound Monitoring Summary” is attached as Appendix A.

5.0 Remediation and Mitigations for Noise Impacts

- Mill location greater than 1.0 km from the center of the community;
- Ore haulage to/from Bellekeno and the Flame and Moth Mill will be conducted on day shift only (7 am – 7 pm);
- Seek variance from Yukon Workers Compensation Health and Safety Board to modify equipment backup indicators with strobe light for night time operation;
- Orientation of the mill doors away from the community and sound baffling;
- Minimize clearing around mill site to limit mill view;
- Limit employee/contractor interaction with Keno City;
- Water spraying or other use of dust suppressants as appropriate;
- Incorporation of light pollution abatement measures;
- The crushing facility will only be operated during the day shift (7 am – 7 pm);

- Insulate the mill building for noise reduction; and
- Sound abatement panels or walls constructed around the crushing facility to reduce noise.

6.0 References

YESAB (2009) Designated Office Evaluation Report for Type A Water Licence and Quartz Mining Licence Applications – Bellekeno Mine Development, Project Number: 2009-0030. Mayo YESAB Designated Office, Mayo, YT.

Memorandum

Date: December 4, 2009
To: Rob McIntyre, Alexco Resource Corp.
From: Ethan Allen, Access Consulting Group
Subject: Keno City Preliminary Sound Monitoring Summary



1. Introduction

During assessment of Alexco Resource Corp's Bellekeno Mine development process (YESAB file 2009-0030) during the winter/spring of 2009, one of several concerns raised by Keno City residents regarding potential socioeconomic impacts of the project was that of noise which might be disruptive to the community.

One of the primary mitigations put forward by Alexco during the YESAB assessment was moving the mill site to the former Flame and Moth pit. Keno residents acknowledged that the Flame and Moth site should compare favorably with the Christal Lake site with respect to potential noise concerns due to differences in local topography. Concerns that Sourdough Hill would act as a kind of parabolic sound reflector were alleviated at the Flame and Moth site, as mill site lies below the town and is open to the west down the Duncan Creek valley.

In addition to moving the proposed mill site to Flame and Moth pit, in response to community concern about noise, Alexco began periodic sound monitoring at a variety of locations surrounding Keno City (see Figure 1) in order to help determine baseline sound conditions. Although noise resulting from the mine, mill and haulage was modeled by the YESAB evaluation report, the primary concern from stakeholders was expressed with respect to the mill site operations and its effect on Keno City.

The recommended Mitigations in the YESAB evaluation report included conducting a noise impact study prior to project implementation and develop a noise abatement and management plan on the result of the noise impact study. These recommended mitigations were confirmed and incorporated into recommendation numbers 65, 66 and 67 in the Decision Document issued by Yukon Government on July 10, 2009 as follows:

Table 1 Decision Document Recommendations Regarding Noise Abatement and Sound Studies

Recommendation #	YESAA Recommendation
66	Conduct a noise impact study prior to project implementation. The study must aim to achieve the following: <ul style="list-style-type: none"> • Analyze baseline conditions during conditions of low ambient noise. • Calculate the potential noise emissions from all activities that generate significant noise. • Calculate the noise emission level that the closest receiver may experience due to those activities. Consideration must be given to local environmental conditions (e.g. terrain, temperature inversions, and downwind conditions relative to sensitive receivers) and proposed mitigations. • Calculate the cumulative noise emission of this project in combination with existing and proposed activities (e.g. care and maintenance, Keno City).
67	Develop a noise abatement and management plan based on the results of the noise impact study. The plan must aim to achieve the following. <ul style="list-style-type: none"> • Identify appropriate measures to reduce noise emissions. • Incorporate these measures into project design and implementation.
68	Upon commencement of each block of operations (e.g. crusher; bypass construction; ore traffic), a verification study will be conducted. This will consist of continuous monitoring over a two week period. Monitoring will aim to capture the ambient noise levels at sensitive receivers, inclusive of what the project is contributing. If unacceptable noise levels are identified further measures to reduce the noise levels are required.

This memorandum summarizes the YESAB sound study and also the results of preliminary sound monitoring undertaken by Alexco representative Jennifer Dobbie between May 5 and July 28, 2009.

1.1 Purpose

This internal investigation is intended to partially fulfill the requirements of the recommendations, in particular, to “analyze baseline conditions during conditions of low ambient noise”. It is understood that this report will be the first of a number of investigations which will fulfill recommendations 66-68 of the Decision Document. We intend to consult with 3rd party experts during subsequent investigations. These investigations will be added to the Noise Abatement Plan, submitted under QML-0009.

1.2 YESAB Sound Study

The YESAB Final Evaluation Report deliberated extensively on the potential impacts the noise resulting from the project might have on Keno City. Their assessment identified and attempted to quantify and predict noise resulting from various components of the mine and mill operations including both point and non-point sources. This also took into consideration Alexco's voluntary limitation of hours of operation for certain mine components (i.e. ore haul and crusher operation during day shift only).

In their Effects Characterization and Significance Determination, YESAB created three scenarios by calculating the potential estimated noise levels from the mill site (including crushing operations, mill infrastructure and DSTF operations), the mine site, and from transportation (ore haul). These three scenarios were also modeled for both nighttime and daytime. The results of the modeling for the mill site (the focus of this preliminary monitoring) led the YESAB Final Evaluation Report to conclude that during initial construction (the use of heavy machinery during dayshift hours of operation) noise levels could reach 75.2 decibels (dB) (calculated on the basis of sound measured at the nearest residence 50 m from construction of the Lightning Creek Bridge). Construction at the mill site was modeled to result in measured noise levels in Keno City (~900 meters from the mill site) to be 50 dB. These levels were deemed to be "within the middle range for what is socially acceptable for daytime construction." Daytime noise levels in Keno City (based on 775-825 meters distance) during milling operations based on continuous simultaneous operation of primary and secondary crushers, crusher feed equipment, conveyers, screen and hoppers and DSTF operations was predicted to result in noise levels of 63 dB. The YESAB evaluation report concluded that "this estimated noise level falls within the middle range for what is considered socially acceptable for daytime construction (as noted, 50-90) with an average of 75).

The author of the YESAB desktop sound study acknowledges a number of assumptions, most of which were likely to result in an overly conservative model. For one, the model assumed that all equipment would operate simultaneously at each location. Also, it was assumed that these simultaneously operating equipment would be additive because they were at the same location, when in fact some of the equipment at the mill site may be up

to several hundred meters apart. The biggest limitation was the fact that the model used did not allow for environmental factors, such as prevailing winds, temperature gradients, local topography, to be accounted for.

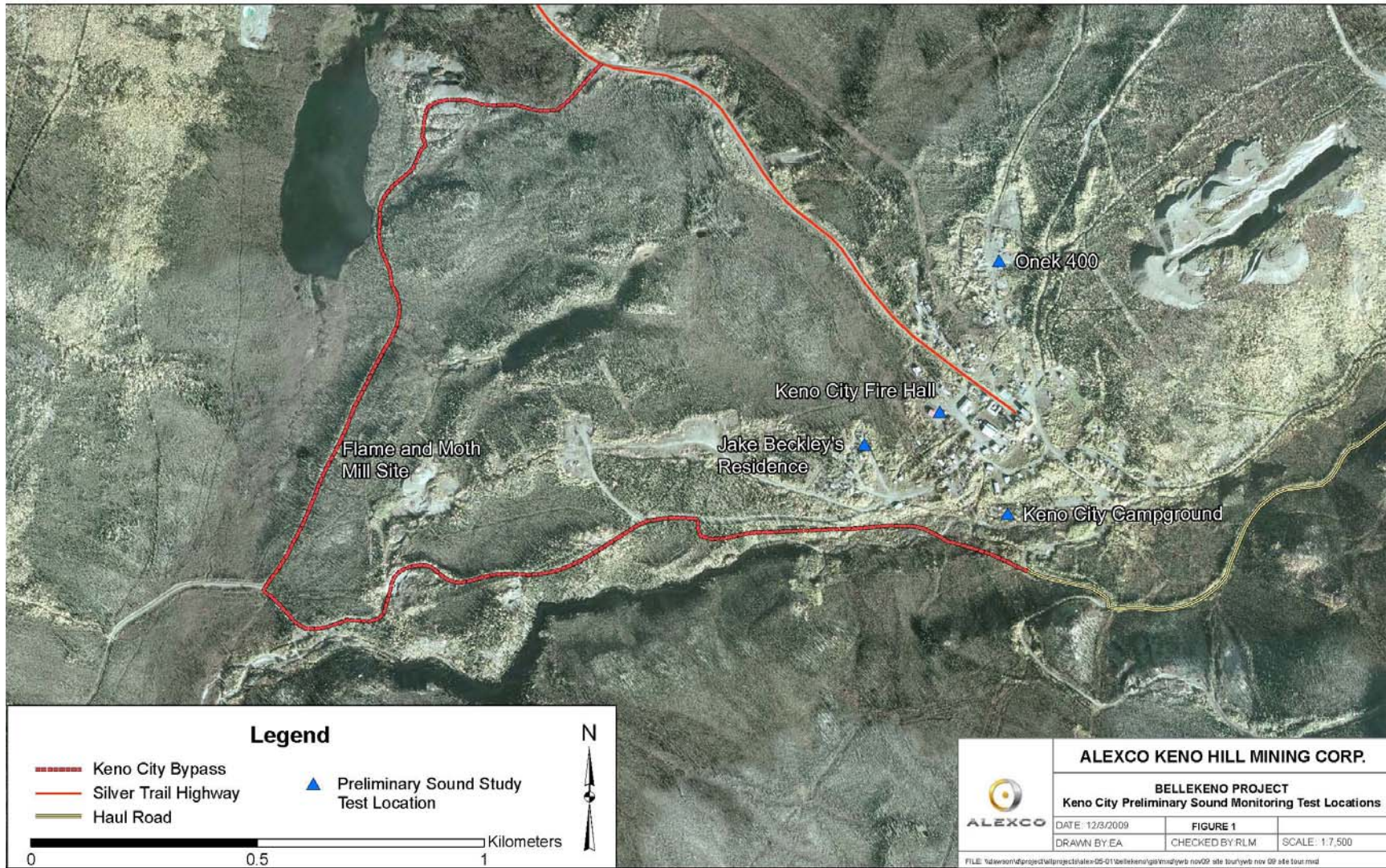
The general conclusion of the impact assessment in the YESAB evaluation report noted that although the estimated noise levels fell within the middle of the range for what is socially acceptable for daytime construction (63dB), some minor health effects were possible given the relatively quiet ambient levels. YESAB deemed the effects to be considered significant and adverse and proposed a number of suggested practices for noise source controls, noise path controls, noise receptor controls and other mitigations in order to “minimize and alleviate the effects so they are no longer considered significant.”

2. Methods

Between May and July 2009, an Alexco representative took periodic sound measurements at various test locations around Keno City (see Figure 1). The time, date, weather, temperature (during some readings) and dB reading was recorded.

The instrument used to record the sound intensity was an Integrating Sound Level Meter model RS-232/ Datalogger.

Figure 1 Keno City Preliminary Sound Monitoring



3. Results

The results of these the preliminary sound monitoring are summarized in Table 2 below. Table 3 summarizes descriptive statistics of the data by test location.

ALEXCO KENO HILL MINING CORP. BELLEKENO PROJECT
PRELIMINARY SOUND STUDY

Table 2 Preliminary Sound Monitoring Data

Date	Time	Weather	Temp (C)	Sound Level at Test Location (dB)				Comments
				Onek 400	Jake Beckley's House	Keno City Fire Hall	Keno City Campground	
5-May-09	9:00am	Sunny	12	36.0	34.0	37.1	51.9	
6-May-09	10:45am	Windy	9	36.8 ^a	37.7 ^a	36.1 ^a	51.8 ^a	^a Excavator was operating at Flame & Moth while reading was taken
7-May-09	2:30pm			36.3	38.4 ^a	38.2	49.8	^a Jake's Dogs were barking
8-May-09	8:15am	Sunny	10	36.9	35.6	37.5	50.2	
12-May-09	3:30pm	Sunny	16	37.2	36.9	38.6	51.2	
14-May-09	10:15am	Sunny		36.8	37.5	37.9	50.1	
22-May-09	9:30am	Windy/Sunny		42.6 ^a	40.4 ^a	39.1 ^a	49.9 ^a	^a Excavator was operating on the road from Galkeno 300 to Duncan Creek Road.
23-May-09	10:45am			41.5 ^a	38.6 ^a	39.5 ^a	51.5 ^a	^a Excavator was operating on the road from Galkeno 300 to Duncan Creek Road.
27-May-09	11:15am	Overcast	16	40.5	36.1	38.5	52.5 ^a	^a Water level rising at campground
7-Jun-09	10:10am	Warm		^a 45.9	^b 41.6	^b 41.5	49.7	^a Birds, ^b Water
12-Jun-09	2:30pm	Thunder/Lightning		45.9 ^a	48.9 ^a	42.6 ^a	56.7 ^a	^a There was a thunder storm
21-Jun-09	10:30am	Warm		45.2 ^a	44.4 ^b	40.9 ^c	40.9	^a Water, ^b dogs, ^c birds
24-Jun-09	3:45pm	Warm		42.3	46.0 ^b	47.6 ^c	41.3	^a Birds, trucks ^b , squirrels ^c
25-Jun-09	3:25pm	Warm		43.4	41.6	37.3	41.1	
29-Jun-09	9:30am	Warm		47.1 ^a	36.1	41.5	43.5	^a Birds
30-Jun-09	8:44am	Warm		39.6	41.7	44.5	45.8	
5-Jul-09	2:14pm	Warm		46.2	43.5	39.6	51.3	
12-Jul-09	9:15am	Cloudy/Warm		44.3	41.5	38.7	55.6	
28-Jul-09	11:10am	Cool/Windy		49.6	44.7	40.4	53.4	
Mean				41.8	40.3	39.8	49.4	

Table 3 Descriptive Statistics Summary

Parameter	Onek Pit	Jake Beckley's	Keno City Fire Hall	Keno City Campground
Mean	41.79	40.27	39.85	49.38
Standard Error	0.98	0.92	0.64	1.08
Median	42.30	40.40	39.10	50.20
Mode	45.90	41.60	41.50	#N/A
Standard Deviation	4.27	4.01	2.81	4.69
Sample Variance	18.27	16.08	7.87	22.04
Kurtosis	-1.26	-0.48	2.07	-0.33
Skewness	0.06	0.43	1.34	-0.70
Range	13.60	14.90	11.50	15.80
Minimum	36.00	34.00	36.10	40.90
Maximum	49.60	48.90	47.60	56.70
Count	19.00	19.00	19.00	19.00

4. Discussion and Conclusions

A number of observations can be made from these data:

- Of the four test locations, the highest to lowest mean sound levels were observed at the Keno City Campground and followed by the Onek Open Pit, with the quietest being the Keno City Fire Hall. The high sound levels at the Keno City Campground are attributable to the noise of Lightning Creek.
- Standard Deviation and Variance were the greatest at the Keno City Campground and the least at the Keno City Fire Hall. The high variability of noise levels at Keno City Campground is interpreted to be a result of fluctuating water levels (and sound levels).
- Localized sound sources (i.e. birds, dogs, squirrels, vehicles) have a measurable effect on sound intensity of up to a 5 dB increase above means.
- A weather event such as a thunder storm (see June 12) raised sound levels at all test locations by between 2.8 to 8.6 dB, depending on the intensity of the storm at the time the reading was taken).
- Machinery working on the east flank of Sourdough Hill (see May 22 and May 23) may have a measurable effect at Onek Pit and (< 1 dB increase) but does not appear to be measurable at the other Keno City locations.

- Machinery working at the Flame and Moth Mill site (May 6) did not appear measurable at the test locations (all sites except Keno City Campground were below their means). Higher sound levels at Keno City Campground are interpreted to be due to higher water levels associated with freshet. This observation was corroborated by Alexco representatives during preparatory earthworks construction during July, 2009. It was confirmed that multiple pieces of heavy equipment operating simultaneously at the mill site could not be heard in Keno City.

In conclusion, this preliminary sound monitoring suggests that sound levels produced by heavy construction equipment, is probably not measurable (or noticeable to the ear) in Keno City. Although the mill crushing equipment is anticipated to produce higher sound levels than construction equipment, these results suggest that the methodology used to model sound in the YESAB evaluation report resulted in overly conservative predictions. In particular, the limitation of the YESAB study in not accounting for local (and topographic effects) clearly makes the model over conservative. The well vegetated hill between the mill site and Keno City appears to be an extremely effective sound barrier.

Future Work

- Any future sound measurements should be done with consistent recording of other weather parameters during sound monitoring.
- Record wind direction and speed during sound monitoring (especially if equipment is working at the mill site) in order to assess if wind has any measurable effects on sound transmission.
- When specific notes are recorded, ensure that the notes are more carefully tied to test locations.
- The raw data has been transposed in order to create a format more conducive to data analysis. It is recommended that the field technician in charge collecting the data use this format during transcription of recordings in order to facilitate analysis.
- Additional observations should be taken period during winter (cold temperature) conditions in order to assess the winter baseline conditions and the effect of temperature on sound propagation at the site.

- Additional observations should be taken at night in order to assess nighttime baseline noise levels in Keno City.
- Ensure that the remainder of the requirements of the Decision Document recommendations 66-68 are complied with as development progresses.

Should you have any questions, please contact the undersigned at (867)-668-6463.



E. Allen, M.Sc.

December 4, 2009

5. References

YESAB (2009) Designated Office Evaluation Report for Type A Water Licence and Quartz Mining Licence Applications – Bellekeno Mine Development, Project Number: 2009-0030. Mayo YESAB Designated Office, Mayo, YT.