

# Teck

## 2014 Geotechnical Inspection Tailings Management Facility Sä Dena Hes, Yukon Territory

Prepared for

Teck Resources Limited



Prepared by



SRK Consulting (Canada) Inc.  
1CT008.046  
December 2014

# 2014 Geotechnical Inspection Tailings Management Facility Sä Dena Hes, Yukon Territory

December 2014

**Prepared for**

Teck Resources Limited  
601 Knighton Road  
Kimberley, BC V1A 3E1  
Canada

Tel: +1 250 427 8408  
Web: [www.teck.com](http://www.teck.com)

**Prepared by**

SRK Consulting (Canada) Inc.  
2200-1066 West Hastings Street  
Vancouver, BC V6E 3X2  
Canada

Tel: +1 604 681 4196  
Web: [www.srk.com](http://www.srk.com)

Project No: 1CT008.046

File Name: 2014SDHGeotInsp\_Report\_1CT008.046\_20141219FNL\_PMH.docx

Copyright © SRK Consulting (Canada) Inc., 2013



# Table of Contents

<b>1</b>	<b>Introduction .....</b>	<b>1</b>
<b>2</b>	<b>Background .....</b>	<b>1</b>
<b>3</b>	<b>Observations and Recommendations .....</b>	<b>3</b>
3.1	North Dam.....	3
3.1.1	Observations .....	3
3.2	North Creek Dyke and Second Crossing.....	4
3.2.1	Observations .....	4
3.2.2	Recommendations .....	5
3.3	South Dam .....	5
3.3.1	Observations .....	5
3.3.2	Recommendations .....	5
3.4	Reclaim Dam .....	6
3.4.1	Observations .....	6
3.4.2	Recommendations .....	6
3.5	Camp Creek Diversion.....	6
3.5.1	Observations .....	6
3.5.2	Recommendations .....	6
3.6	Burnick and Jewelbox Waste Rock Dumps.....	6
3.6.1	Observations .....	6
3.6.2	Recommendations .....	7
<b>4</b>	<b>Inspections .....</b>	<b>7</b>
4.1	Dam Safety Inspections (DSI) .....	7
4.2	Dam Safety Reviews (DSR) .....	7
4.3	Operations, Maintenance and Surveillance.....	7
4.4	Emergency Preparedness .....	8

## List of Figures

- Figure 1: Vicinity Map
- Figure 2: North Dam Site Plan
- Figure 3: Section 0+400 North Dam
- Figure 4: Tailings Management Facility and Water Management
- Figure 5: Burnick Zone Plan View
- Figure 6: Plan View of the Main Zone and Jewelbox Dumps

## List of Tables

- Table 3.1: Summary of Survey Results for North Dam Settlement Gauges..... 3

## Appendices

- Appendix A: Photo Log
- Appendix B: Piezometric Levels

# 1 Introduction

In accordance with an authorization by Mr. Gerry Murdoch, Teck Resources Limited, Mr. Peter Healey of SRK (Canada) Inc. completed a geotechnical inspection of structures and features that would form part of the closed Sä Dena Hes mine located near Watson Lake, Yukon. The inspection was carried out during two site visits (July 8 and September 23, 2014) to view the progress of the decommissioning of the Tailings Management facility which was kicked off just after the 2014 spring freshet. This report presents our observation of the following structures and features and provides recommendations where appropriate:

- The North Dam;
- North Creek Dyke and Second Crossing;
- The relocated Camp Creek Channel;
- The North Channel;
- The Sediment Retaining Structure; and
- The Burnick Waste Rock Dump below the 1200 Portal.

The weather during both inspections was mild and sunny. It should be noted that all elevations referenced in this report are based on a datum that was established during a LiDar survey carried out in 2012. The original site datum used to design and build the structures in the early 90's was about 2 m lower than the 2012 datum. All previous inspection reports used the 1990 datum. A more complete as-built report of the decommissioning of the tailings management facility (TMF) will be prepared in 2015.

# 2 Background

The pre-closure TMF consisted of three earth structures, which were referred to as the North Dam, the South Dam and the Reclaim Dam as shown on Figure 1. The North and South Dams, which impound the tailings, were constructed between July 1990 and October 1991. The starter dams for both structures were built to a height of about 13 m (North Dam to El. 1100 m and the South Dam to a maximum El. 1099 m). A small, 2-m high cofferdam was also constructed halfway between the two dams to control flow of water and tailings from the north end of the impoundment.

In addition to the North and South Dams, the Reclaim Dam was built (El.1084 m) to detain supernatant water decanted through a concrete control structure (Decant Tower) located in ponded water on the north side of the South Dam. During the operating years, the decanted water discharged to the reclaim pond via a corrugated metal pipe that was installed at the base of the South Dam. The mine operation involved recycling of the detained water to the mill combined with a controlled discharge, when required, into Camp Creek from April to October each year. The discharge rate and the total volume of discharge was set by the Yukon Water Board and was governed by the current Water Licence.

During operation of the mine and for the last 24 years, Camp Creek was diverted into a riprapped channel that ran along the west side of the reclaim pond and discharged through two 1.2-m diameter culverts into a riprap lined exit chute.

An emergency spillway was also located in the west abutment of the South Dam and was designed to accommodate the 200-year flood event.

In March 1992, the previous operators, Curragh Resources, built a rockfill buttress along the toe of the Reclaim Dam to provide extra protection against sloughing and erosion of the toe due to increased seepage.

In September 1992, work commenced on a 2 m raise of the South Dam to an elevation of 1100 m. Work on the extension was shut down on October 14, 1992 because of the construction difficulties experienced due to sub-zero temperatures. The raise was never completed.

Operations at Sä Dena Hes mine, which commenced in July 1991, were suspended in December 1992 due to low lead and zinc prices. Operations at the mine remain suspended.

In 2013 Teck decided to permanently close the mine and decommission the South and Reclaim Dams.

The scope of the decommissioning involved removal of the South Dam and the Reclaim Dam with the North Dam remaining in place. The work also involved the removal of the emergency spillway in the South Dam, the decant tower and decant pipe through the dam. The material removed from the dams was used as a source for the capping of disturbed areas around the site as well as the tailings that remain in the TMF and the area previously occupied by the reclaim pond. The depth of the soil cap varies up to 1 m. A small amount of tailings was deposited in the south half of the TMF during the operation of the mine. This area was also capped. Final capping of the tailings will be completed in 2015.

The decommissioning plan also included the construction of a 5 m (approx.) high sediment retaining structure (SRS) along the upstream toe of the removed South Dam to contain any sediment from erosion of the tailings cover during the early stages of reclamation/revegetation. This structure was formed during the removal of the South Dam.

Runoff from above the SRS flows into a riprap-lined channel called the North Channel which feeds the sedimentation pond and then discharges over a riprapped lined spillway built into the SRS. This flow is then directed into a riprapped line channel which eventually discharges back into Camp Creek below the location of the removed Reclaim Dam.

As part of the relocation of Camp Creek back into its original alignment, a riprap lined channel was built along the old creek alignment. Camp Creek has been redirected into this new channel and eventually converges with the original creek bed below the location of the removed Reclaim Dam. The decommissioning of the Camp Creek diversion located around the west side of the old reclaim pond will be completed in 2015 along with the decommissioning of the associated twin pipe spillway and the exit chute.

## 3 Observations and Recommendations

### 3.1 North Dam

#### 3.1.1 Observations

A site plan of the North Dam is presented on Figure 2 and a view of the TMF taken from the Jewelbox waste rock dump is shown in Photo 1.

The crest of the North Dam (Photo 2), which is at an elevation of 1100 m, shows no signs of deformation or abnormal settling. The downstream slope of the dam shows no signs of surficial movement or erosion nor is there any sign of bulging at the downstream toe.

Teck has been surveying the settlement gauges on the North Dam since 1993. Results are shown on Table 3.1. No settlement survey has been completed since 2011. The results on Table 3.1 indicate that there has been no significant settlement of the embankment.

The piezometers and protective caps (Photo 2) along the crest of the North Dam remain intact. Some of the deformation monitoring pins and the original settlement gauges protected by 40-gallon drums are still evident on the crest of the dam. Labels on each of the piezometers have recently been upgraded to lower the risk of damage by the elements.

**Table 3.1: Summary of Survey Results for North Dam Settlement Gauges**

DATE	NDS3	NDS1	NDS2
August/93	1098.639	1098.501	1098.613
July/94	1098.637	1098.502	1098.589
August/95	1098.690	1098.545	1098.663
July/96	1098.637	1098.493	1098.609
August/97	1098.637	1098.496	1098.618
October/98	1098.627	1098.482	NA
October/02	1098.619	1098.481	1098.607
June/05	1098.637	1098.479	1098.587
June/06	1098.63	1098.45	1098.57
August/07	1098.786	1098.454	1098.489
June/08	1098.626	1098.482	1098.597
June/09	1098.625	1098.469	1098.587
June/10	1098.59	1098.47	1098.60

Photos 3 and 4 show the soil cover that was placed in 2014 over the northern portion of the tailings stored in the TMF. By the end of the 2014, 95% of the cover had been placed over the entire TMF area.

Photo 5 shows the downstream face of the North Dam which was originally built with a slope of 2.5H:1V. Along the toe of this slope there is an 80 m seepage zone. This seepage is collected at a monitoring station referred to as MH-02 and is a combination of groundwater discharge from the surrounding hillsides to the west and minimal seepage flow from the impoundment.

The water levels in the piezometers are recorded monthly when accessible and the 2014 data are presented in Appendix B. Levels recorded in October 2014 are plotted on the dam section shown on Figure 3. The seasonal fluctuations recorded this year in the piezometric levels are generally consistent with those in previous years and are within acceptable tolerance limits.

### **Recommendations**

SRK recommends the following:

- Continue to take monthly water level readings from the top of the 2" diameter plastic piezometers inside the casing in accordance with the OMS manual. Water levels should not be measured from the rim of the steel casing.
- As Teck has decided to adopt the 2012 datum for the site, the conversion from depths to elevation in future should be carried out using this datum.
- During the construction season in 2015, SRK recommends that readings be taken of the settlement gauges on the North dam and converted to the new datum.
- Continue to monitor the flow at MH-02 monthly and collect water quality samples in accordance with the OMS and the water licence.

## **3.2 North Creek Dyke and Second Crossing**

### **3.2.1 Observations**

At the time of the July inspection, the water level in the pond behind the North Creek Dyke was about 300 mm above the invert of the lower 600 mm culvert. No significant debris had accumulated around the inlet of the upper 600 mm culvert.

No tension cracks were noted on the dam crest and the upstream and downstream faces were stable. Sandbags that had been placed around the inlets to the three culverts were still in place (Photo 6). No signs of deformation or abnormal settling were observed.

Vegetation is taking hold on the downstream face of the dyke. No significant rills or erosion gullies were evident on the face (Photo 7).

There has been no change in the condition of the three overflow pipes (Photo 7) and an inspection of the buried joint between the 1200 mm and 1000 mm pipe found that it has remained secure. The downstream end of the lower 600 mm pipe is shown on Photo 8.

Below the North Creek Dyke is a second crossing consisting of a single 900-mm diameter CMP culvert. There are in fact two culverts but the lower one is blocked off and is not used. A number of large boulders lie at the entrance to the culvert but do not significantly reduce the inflow capacity of the culvert. SRK understands that this second crossing will be staying in place for possibly ten years.

The downstream face of the road fill is stable and there is little evidence of any significant erosion or sloughing. Historically, runoff from the roadway has caused erosion gullies to develop in the fill above the pipes. However since runoff management berms were installed by Teck several years ago, the erosion has stabilized.

### **3.2.2 Recommendations**

The North dyke was removed in 2014 and the resulting channel was riprapped. No recommendations other than the annual inspection are provided.

Monthly inspections should be made of the site to ensure no blockage of the culvert has occurred. Remove any debris that accumulates at the inlet to the culvert when needed.

The sideslopes at the second crossing in North Creek should also be inspected to ensure there is no subsidence.

## **3.3 South Dam**

### **3.3.1 Observations**

The South Dam was decommissioned during the 2014 construction season by excavating and placing the fill material as a soil cover over the exposed tailings surface. On the completion of the 2014 construction season, about 90% of the tailings surface had been covered. Teck expects to complete the covering of the remaining tailings surface in 2015.

The toe buttress was also removed and the riprap sized material was used to provide erosion protection for the new channels.

The emergency spillway, the decant pipeline and the decant tower were also removed.

As stated above, the decommissioning plan included the construction of a 5 m (approx.) high sediment retaining structure (SRS) along the upstream toe of the removed South Dam to contain any sediment from erosion of the tailings cover during the early stages of reclamation/ revegetation. Photo 9 provides a view looking west over the original location of the South Dam. The construction of the spillway through the sediment retaining structure can be seen in the middle of the photo.

### **3.3.2 Recommendations**

No recommendation are provided for the South Dam.

## **3.4 Reclaim Dam**

### **3.4.1 Observations**

The Reclaim Dam was also decommissioned during the 2014 construction season by excavating and placing the fill material as a soil cover over the tailings surface. Excess fill material not used as a cover was placed in an area just west of the Reclaim Dam buttress previously referred to a borrow area G. A photo looking west over the original location of the Reclaim Dam is shown in Photo 10.

The toe buttress riprap was also removed and used to provide erosion protection for the new channels.

The spillway located in the west abutment of the dam, which consists of two 1.2-m diameter corrugated metal pipes, will be removed in 2015. During the 2014 season, flow in the original Camp Creek diversion was redirected into the newly constructed channel which followed the alignment of the original Camp Creek bed. While most of the Camp Creek now flows into this new channel, a small portion of the flow still reports to the original Camp diversion and discharges through the emergency spillway. In 2015 the former will be decommissioned and the two 1.2-m diameter CMP's will be removed.

### **3.4.2 Recommendations**

No recommendations are provided for the Reclaim Dam.

## **3.5 Camp Creek Diversion**

### **3.5.1 Observations**

Photo 12 shows a west view of the newly constructed channel that was built to restore Camp Creek to its original alignment. A layout of this channel is shown on Figure 4.

### **3.5.2 Recommendations**

In 2015, Teck will complete the reclamation of the original Camp Creek diversion. This would involve recontouring of the area to provide positive drainage to the new channel. The two 1.2 m culverts would also be removed.

## **3.6 Burnick and Jewelbox Waste Rock Dumps**

### **3.6.1 Observations**

SRK inspected the Burnick waste dump at the 1200 portal (Photo 12). The location of this dump is shown in Figure 5. During the recontouring work this year, the dump face was flattened to ensure greater long term stability. No major toe movement or bulging was noted. SRK did not inspect the dump at the 1300 portal (see Figure 5) because of restricted access.

SRK also inspected the recontoured rock dumps at Jewelbox (see Figure 6) and found no evidence of instability.

### 3.6.2 Recommendations

SRK recommends that Teck continue to inspect the Burnick 1200 and 1300 dump slopes and the dumps at Jewelbox and the Main Zone for any sign of vertical settlements or displacements.

SRK also recommends that Teck make annual checks of the slide area at the toe of the 1200 portal dump at Burnick for any sign of further movement.

## 4 Inspections

### 4.1 Dam Safety Inspections (DSI)

Teck shall ensure that an annual inspection of the mine site be carried out by a qualified geotechnical engineer. The focus of the inspections would be the North Dam, the Sediment retaining structure (SRS) and spillway, soil covers, diversions and waste rock dumps. The findings of the inspection should be formalized in a report, which includes an evaluation of the annually measured piezometer levels and settlement readings at the North Dam. The inspection should take place as soon as possible after the snow has melted. This would allow any necessary remedial work to be completed prior to the rainy season.

Extra ordinary inspections should be carried out after any significant storm or seismic events. The triggers for these inspections would be no less than a 50-year flood event and a seismic event equivalent to a Modified Mercalli Intensity scale of IV (Moderate) as felt in Watson Lake.

Over the first five-year period following closure, the annual inspection should be carried out by a qualified professional engineer. After five years, the annual inspection should be carried out by an appropriate representative of the owner responsible for the safety of the tailings storage facility, supplemented by inspections every five years by qualified professional engineer.

A report would be prepared after each inspection.

### 4.2 Dam Safety Reviews (DSR)

The last DSR was carried out in 2009 by Golder Associates. The CDA Dam Classification for the North Dam reported in the 2009 review was *Significant* and consequently a review frequency of every ten years would be required. However, under post closure conditions, the North Dam could be downgraded to a *low* consequence category (as it was in the 2003 Klohn review) and as such no future DSR's would be required. SRK understands that a review of the consequence classification will be carried out this year and written up as a separate report.

### 4.3 Operations, Maintenance and Surveillance

The last OMS Manual was prepared by SRK in 2004. The manual was prepared in accordance with a requirement under Section 74 of the mine's current Water Licence #QZ99-045. The Mining Association of Canada's (MAC) publications: *Developing an Operation, Maintenance and Surveillance Manual for Tailings and Water Management Facilities* (September 2002) as well as the Canadian Dam Association's (CDA) "Dam Safety Guideline" were used to develop the framework for the manual.

The manual was intended to provide procedures required to operate, monitor the performance of, and maintain the TMF and associated water management facilities to ensure that they function in accordance with their design, meet regulatory and corporate policy obligations, and link to the emergency preparedness and response plan.

An update to the 2004 OMS manual should be completed in 2015 and would focus on the maintenance and surveillance of the following components: the North Dam, the soil covers, the SRS and spillway, the waste rock dumps and the diversion channels. The plan should be updated every ten years. However annual updates to the contact information should be made, as required.

#### 4.4 Emergency Preparedness

The last Mine Emergency and Response Plan (MERP) was prepared by SRK as part of the 2004 OMS. The plan was directed mainly at the tailings management facility including the three dams, the spillways and the diversion ditches. Under future closure conditions, the emergency contact information in the EPP should be updated in 2015 and the MERP should be reviewed and revised in 2015 to reflect the closure conditions. The MERP should outline the response procedures and preventive measures that would be required for effective and timely management of an emergency situation.

This report, 2014 Sä Dena Hes Annual Geotechnical Inspection, was prepared by

  
This signature was scanned with the author's  
approval for exclusive use in this document;  
any other use is not authorized.

---

Peter Healey, PEng  
Principal Consultant

Reviewed By

---

Cam Scott, PEng  
Principal Consultant

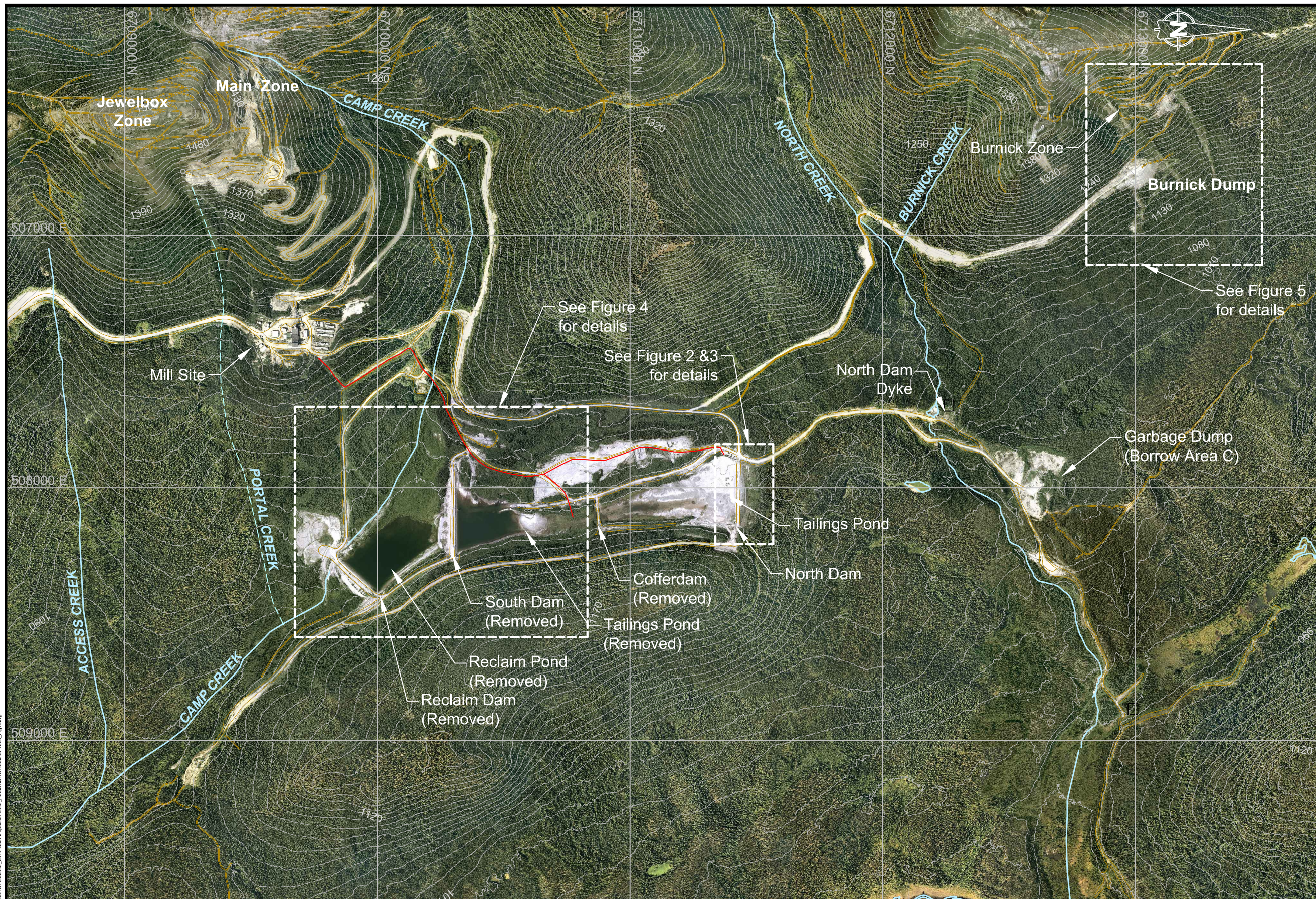
All data used as source material plus the text, tables, figures, and attachments of this document have been reviewed and prepared in accordance with generally accepted professional engineering and environmental practices.

**Disclaimer**—SRK Consulting (Canada) Inc. has prepared this document for Teck Resources Limited. Any use or decisions by which a third party makes of this document are the responsibility of such third parties. In no circumstance does SRK accept any consequential liability arising from commercial decisions or actions resulting from the use of this report by a third party.

The opinions expressed in this report have been based on the information available to SRK at the time of preparation. SRK has exercised all due care in reviewing information supplied by others for use on this project. Whilst SRK has compared key supplied data with expected values, the accuracy of the results and conclusions from the review are entirely reliant on the accuracy and completeness of the supplied data. SRK does not accept responsibility for any errors or omissions in the supplied information, except to the extent that SRK was hired to verify the data.

Figures

---



**NOTES**

1. Topographic contour data and aerial photos were obtained from McElhanney and are based on August 15, 2012 LiDAR survey. Coordinate system is UTM NAD 83CSRS zone 9V.

\\wans\SRK\Projects\01\_SITES\Sa\_Dena\_Hes\1CT008046\_2014\_Geot\Inspection\046\_AuxCAD\1CT008046-1200\_Fig1.dwg



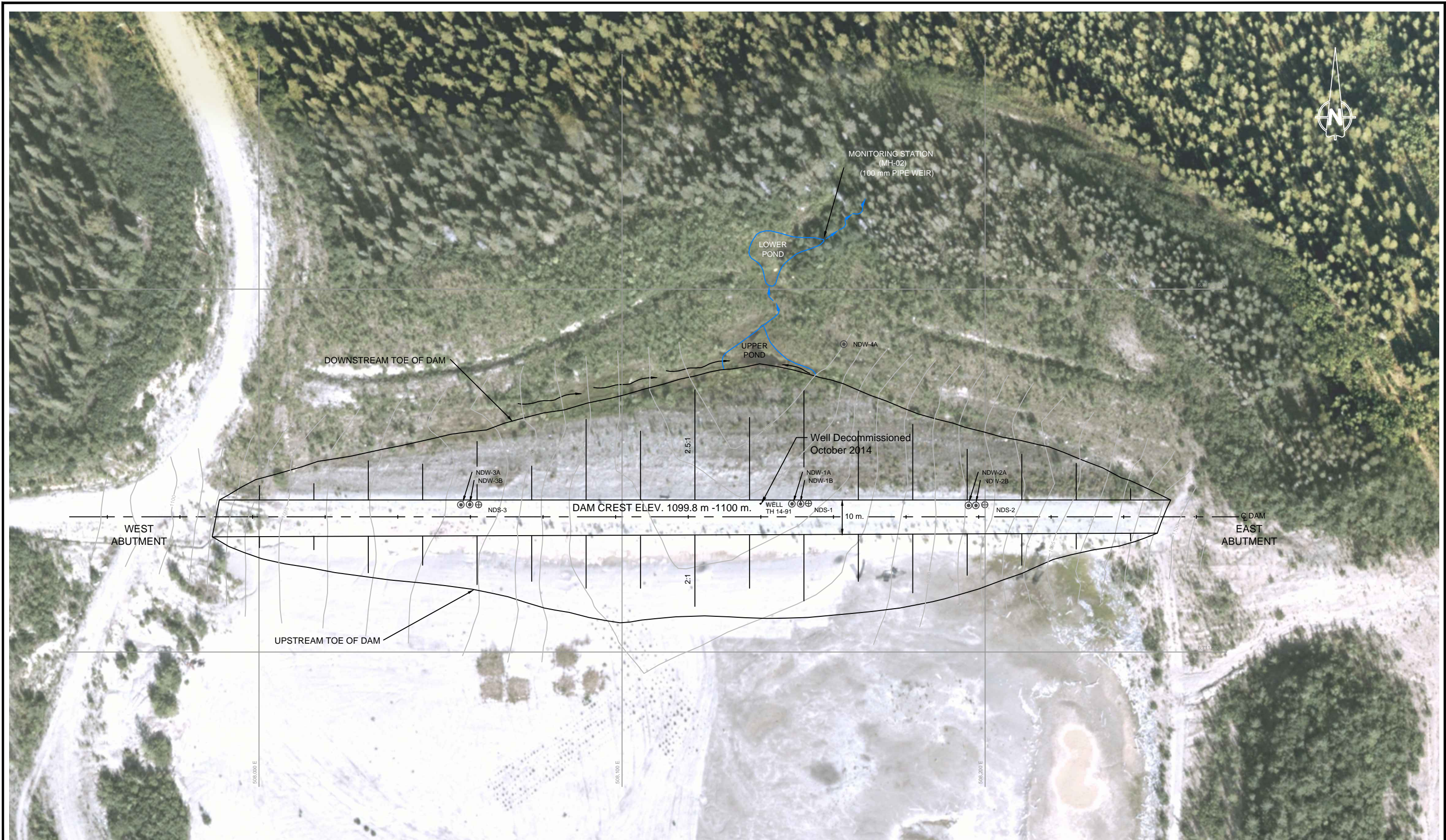
SRK JOB NO.: 1CT008.046 Task: 1200  
 FILE NAME: 1CT008046-1200\_Fig1.dwg

Sa Dena Hes

2014 Geotechnical Inspection

Vicinity Map

DATE: December 2014	APPROVED: PH	FIGURE: 1
------------------------	-----------------	--------------



**KEY**

- NDW-1 PIEZOMETERS INSTALLED (NOV., 1991)
- NDS-1 SETTLEMENT GAUGE INSTALLED (NOV., 1991)
- SEEPAGE

**NOTES:**

1. Topographic contour data and aerial photos were obtained from McElhanney and are based on August 15, 2012 LiDAR survey and October 2013 YES Survey. Coordinate system is UTM NAD 83CSRS zone 9V.

**srk consulting**

SRK JOB NO.: 1CT008,046 Task: 1200  
 FILE NAME: 1CT008046-1200\_Fig2.dwg

**Teck**

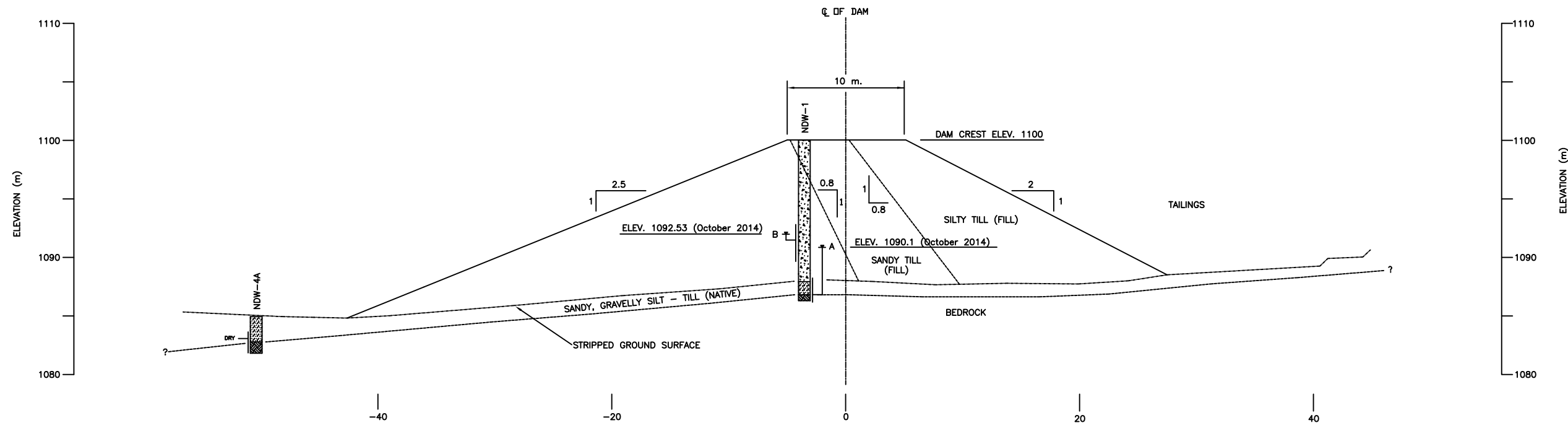
Sa Dena Hes Mine

2014 Geotechnical Inspection

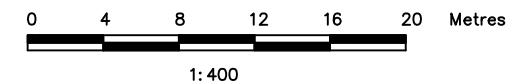
**North Dam Site Plan**

DATE:	APPROVED:	FIGURE:
December 2014	P.M.H.	2

W:\ANSYS\Proj\10101\_SITES\Sa\_Dena\_Hes\1CT008\_046\_2014\_Crest\_Inspection\NAD\_AutoCAD\1CT008046-1200\_Fig2.dwg



	DATE	T.O.P.	READING	ELEV.
NDW-1B	October 2014	1100.57	8.04	1092.53
NDW-1A	October 2014	1100.69	10.59	1090.1



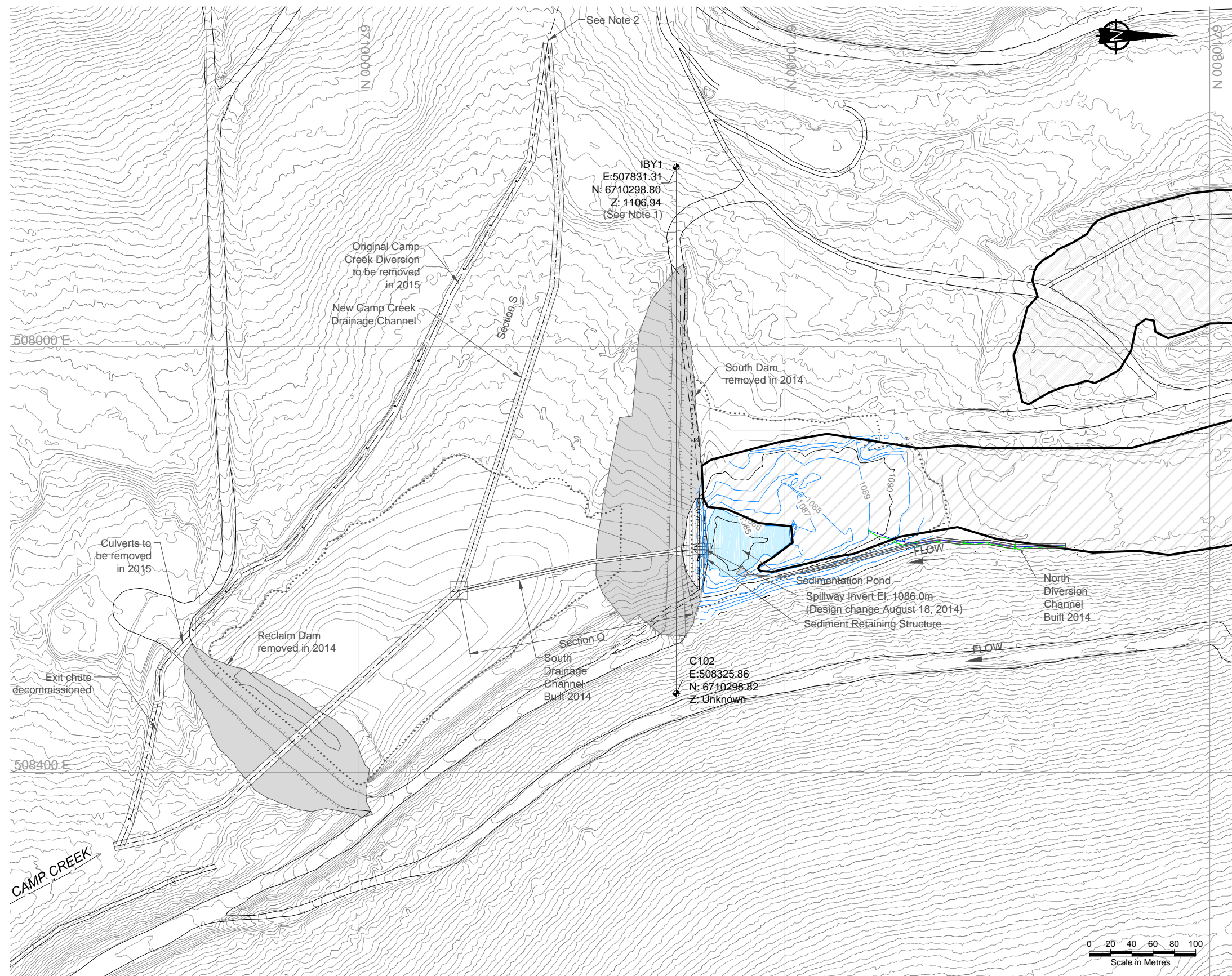
**KEY**

- SANDY TILL (FILL)
- SILTY TILL (FILL)
- SAND & GRAVEL (FILL)
- SILTY SAND (TILL)
- GRAVELLY SILTY SAND (TILL)
- SAND & GRAVEL (NATIVE)
- BEDROCK
- PIEZOMETERIC HEAD FOR FILTER ZONE INDICATED












**NOTES**

- Topographic contour data and aerial photos were obtained from McElhanney and are based on August 15, 2012 LiDAR survey. Coordinate system is UTM NAD 83CSRS zone 9V.

		2014 Geotechnical Inspection	
		Section 0+400 North Dam	
SRK JOB NO.: 1CT008.046 Task: 1200 FILE NAME: 1CT008046-1200_Fig3.dwg	Sa Dena Hes Mine	DATE: December 2014	APPROVED: P.M.H.
		FIGURE:	3



**LEGEND**

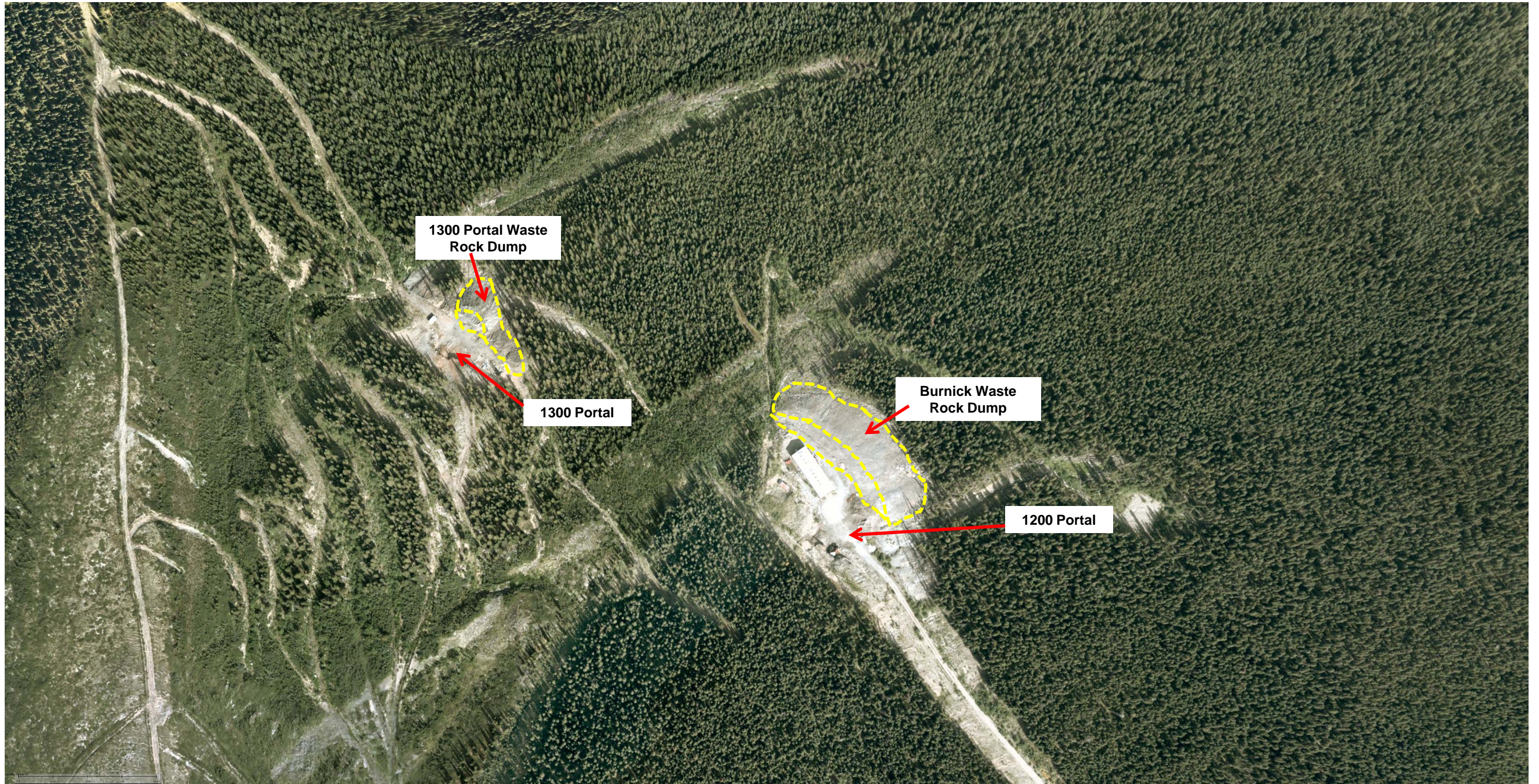
-  Covered Tailings
-  Removed Dams
-  Sedimentation Pond
-  Minor Contours (1m interval)
-  Major Contours (5m interval)
-  Existing Crest
-  Proposed Crest
-  Existing Edge of Road
-  Proposed Edge of Road
-  Camp Creek
-  Drainage Channel

**NOTES**

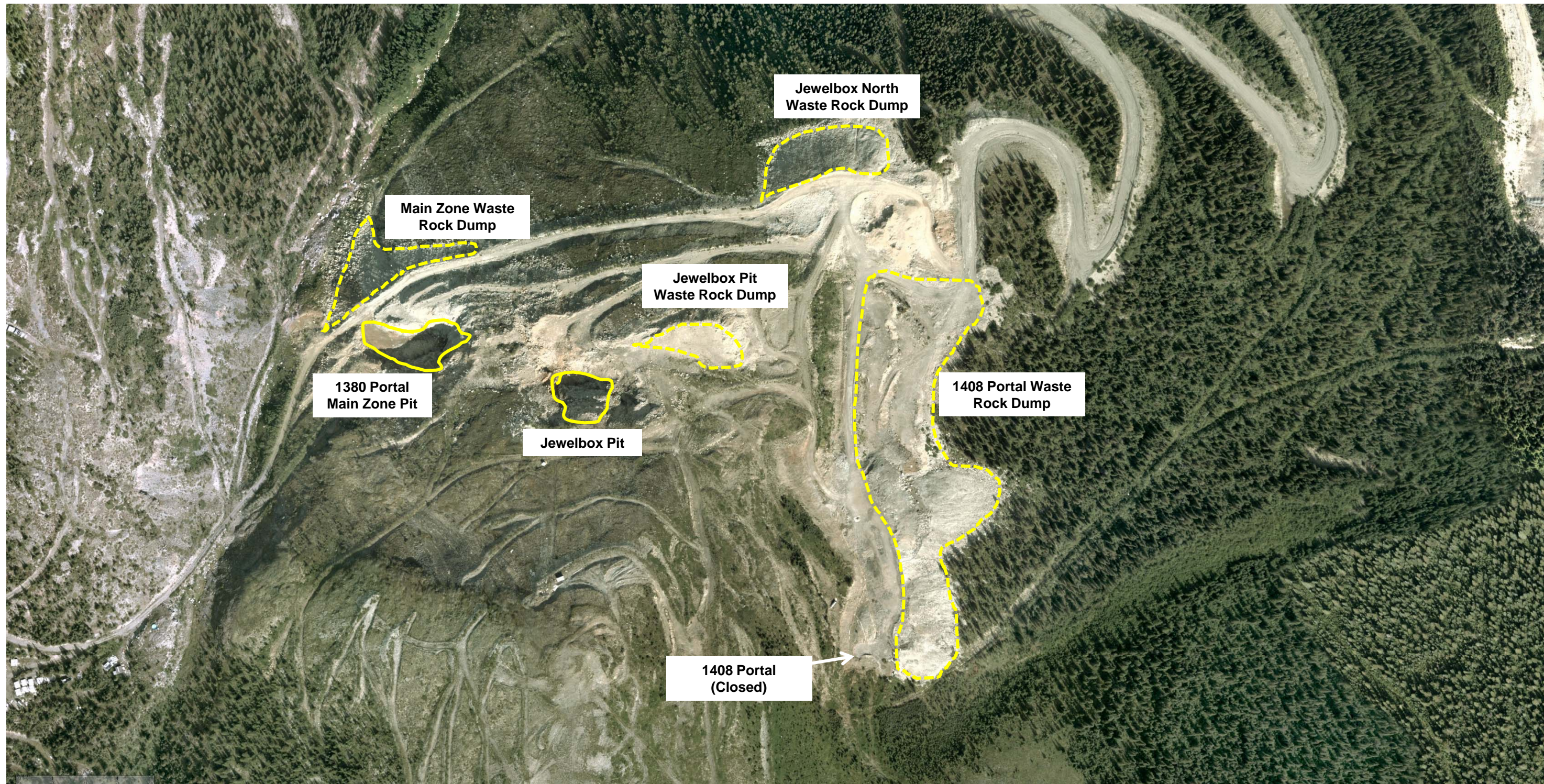
1. This Benchmark datum is currently used to monitor settlement gauges on the dam and was used as the benchmark in construction of the dam. The elevation has been adjusted from 1103.54m to the current LiDAR Survey elevation.

J:\01\_SITES\Sa\_Dena\_Hes\CT008\_046\_2014\_Geot Inspection\040\_AveCAD\1CT008046-1200\_Fig4.dwg

			2014 Geotechnical Inspection	
	Sa Dena Hes		Tailings Management Facility	
SRK JOB NO.: 1CT008.046 Task: 1200 FILE NAME: 1CT008046-1200_Fig4.dwg		DATE: December 2014	APPROVED: P.M.H.	FIGURE: <b>4</b>



		2014 Geotechnical Inspection		
		Burnick Zone Plan View		
Job No: 1CT008.046.1200 Filename: Figure 5.pptx	Sä Dena Hes	Date: December 2014	Approved: PMH	Figure: <b>5</b>



		2014 Geotechnical Inspection		
		Main Zone and Jewelbox Zone Plan View		
Job No: 1CT008.046.1200 Filename: Figures 2 and 3.pptx	Sä Dena Hes	Date: November 2014	Approved: PMH	Figure: <b>6</b>

Appendix A: Photo Log

---



**Photo1: View of the Decommissioned TMF from Jewelbox Waste Rock Dump (Sept 23, 2014).**



**Photo 2: View east along the North Dam Crest.**



**Photo 3: View looking east along the North Dam and the soil cover that was placed over the tailings (Sept 23, 2014).**



**Photo 4: View over the capped tailings surface at the north end of the TMF (Sept 23, 2014).**



**Photo 5: View of the downstream face of the North Dam.**



**Photo 6: Inlet Culverts at the North Creek Dyke.**



**Photo 7: Outlet culverts at the North Dyke.**



**Photo 8: Main outlet culvert at the North Creek Dyke.**



**Photo 9: View looking west along the centerline of the removed South Dam. The SRS is seen in the middle of the photo with the filter fabric being placed in the new emergency spillway.**



**Photo 10: View looking west along the alignment of the removed Reclaim Dam.**



**Photo 11: View looking west over the relocated Camp Creek in the riprapped channel.**



**Photo 12: Contoured lower slopes of the Burnick Waste Rock Dump.**



**Photo 13: Contoured backfill placed up against the 1200 Portal.**

Appendix B: Water Levels

---

Appendix B: water Levels										
	Jan-14	Feb-14	Mar-14	Apr-14	May-14	Jun-14	Jul-14	Aug-14	Sep-14	Oct-14
NDW-1A	11.00	11.12	11.21	11.26	10.11	10.23	10.23	10.55	10.64	10.59
NDW-1B	8.02	8.03	bottom: 8.04m	8.03	8.04	bottom: 8.04m	bottom: 8.05m	bottom: 8.03m	8.03, soft bottom @ 8.05	8.03, soft bottom @ 8.04
NDW-2A	5.84	8.96	9.05	9.11	6.78	7.01	7.06	7.60	7.74	7.73
NDW-2B	5.13	5.13	soft bottom: 5.15m	5.13	5.14	soft bottom: 5.16m	soft bottom: 5.15m	soft bottom: 5.13m	5.13, soft bottom @ 5.15	5.13, soft bottom @ 5.15
NDW-3A	7.74	7.92	7.99	8.05	6.96	7.11	7.14	7.42	7.46	7.37
NDW-3B	5.15	5.15	5.14	5.15, soft bottom @ 5.23	5.14, soft bottom @ 5.23	5.15, soft bottom @ 5.23	5.15, soft bottom @ 5.23	5.15, soft bottom @ 5.23	5.15, soft bottom @ 5.23	5.15, soft bottom @ 5.23
NDW-4A	3.37	3.49	bottom: 3.53m	3.51	2.38	2.78	2.91	3.05	3.08	3.03
TH-14-91	11.20	11.32	11.41	11.44	10.62	10.59	10.69	10.87	10.94	Decommissioned
Pond level	NO WATER AGAINST DAM									
RDW-1A	9.48	9.49	9.48	9.49	9.50 (bottom @ 9.56)		Decommissioned	Decommissioned	Decommissioned	Decommissioned
RDW-1B	13.66	13.73	13.79	13.83	12.92	13.60	Decommissioned	Decommissioned	Decommissioned	Decommissioned
RDW-1C	14.24	14.31	14.38	14.41	13.50	14.23	Decommissioned	Decommissioned	Decommissioned	Decommissioned
RDW-2A	12.14	12.15	soft bottom: 12.17m	12.17	soft bottom: 12.17m	12.06	Decommissioned	Decommissioned	Decommissioned	Decommissioned
RDW-2B	14.34	14.34	14.34	14.34	13.80	13.94	Decommissioned	Decommissioned	Decommissioned	Decommissioned
RDW-2C	16.91	16.95	16.99	16.99	16.33	16.57	Decommissioned	Decommissioned	Decommissioned	Decommissioned
RDW-3A	under snow	under snow	2.24	2.28	1.48	2.02	Decommissioned	Decommissioned	Decommissioned	Decommissioned
RDW-3B	6.78	2.49	2.55	2.59	1.86	-	Decommissioned	Decommissioned	Decommissioned	Decommissioned
RDW-4A	dry; bottom: 8.39m	8.37	8.38	soft bottom: 8.40m	7.54	8.23	Decommissioned	Decommissioned	Decommissioned	Decommissioned
RDW-4B	9.40	9.49	9.58	9.61	6.77	9.72	Decommissioned	Decommissioned	Decommissioned	Decommissioned
TH-18-91	13.31	13.4	13.46	13.5	12.61	13.17	N/A <sup>(5)</sup>	14.11	14.25	Decommissioned
TH-21-91	4.11	4.17	4.22	4.26	3.50	4.02	Decommissioned	Decommissioned	Decommissioned	Decommissioned
GW-1B	3.15	soft bottom: 3.26m	3.33	soft bottom: 3.32m	2.98	3.00	N/A <sup>(5)</sup>	soft bottom: 3.24m	3.09, soft bottom: 3.32m	Decommissioned
Pond level	1076.96	1076.96	1076.9	1076.87	<sup>(4)</sup>	1075.30	<sup>(4)</sup>	Pond largely drained;	Pond largely filled/covered	Pond filled, covered
SDW-1A	5.74	blocked at 6.59m	5.90	5.99	5.14	casing broken off	casing broken off	Decommissioned	Decommissioned	Decommissioned
SDW-1B	blocked at 3.38m	blocked at 3.39m	blocked at 3.39m	blocked at 3.38m	blocked at 3.38m	blocked at 3.39m	blocked at 3.39m	Decommissioned	Decommissioned	Decommissioned
SDW-2A	10.85	10.89	10.97	11.03	9.79	7.63	8.33	Decommissioned	Decommissioned	Decommissioned
SDW-2B	blocked at 1.01m	blocked at 0.98m	blocked at 0.97m	blocked at 0.97m	blocked at 2.08m	7.57	bottom at 8.16	Decommissioned	Decommissioned	Decommissioned
SDW-3A	13.70	13.68	13.72	13.77	12.13	11.47	12.04	Decommissioned	Decommissioned	Decommissioned
SDW-3B	13.23	13.22	13.31	13.35	11.91	11.63	casing broken off; hole covered	Decommissioned	Decommissioned	Decommissioned
SDW-5A	9.34	9.40	9.47	9.55	6.9	6.04	7.63	Decommissioned	Decommissioned	Decommissioned
SDW-5B	dry; bottom: 7.38m	bottom: 7.38m	bottom: 7.38m	bottom: 7.38m	3.98	5.73	bottom at 7.33	Decommissioned	Decommissioned	Decommissioned
SDW-4A	under snow	under snow	4.55	4.62	2.97	4.17	5.71	7.12	Decommissioned	Decommissioned
SDW-4B	under snow	under snow	3.25	3.3	2.72	2.71	2.77	3.59	Decommissioned	Decommissioned
SDW-4C	under snow	under snow	3.03	3.09	2.18	2.32	2.32	3.04	Decommissioned	Decommissioned
Pond level	1088.61 <sup>(1)</sup>	1088.83 <sup>(2)</sup>	1088.73 <sup>(2)</sup>	1088.81 <sup>(2)</sup>	1090.71 <sup>(3)</sup>	<sup>(4)</sup>	<sup>(4)</sup>	<sup>(4)</sup>	<sup>(4)</sup>	<sup>(4)</sup>
<b>NOTES:</b>	2014 Monitoring Dates: Jan 15-17; Feb 18-20; Mar 17-18; Apr 8-9; May 24-25; Jun 17; Jul 16-17; Aug 12-15; Sep 23-24; Oct 9-10;									
	1) Rough measurement; to ice surface									
	2) Surveyed; to ice surface									
	3) Water level measured against reference on Decant Tower (bottom of former tower staff gauge)									
	4) Water level measured through YES / AMEC using revised control / reference elevation									
	5) Site shutdown - no measurement possible									

		24-Sep-13	25-Sep-13	26-Sep-13	27-Sep-13	28-Sep-13	30-Sep-13	16-Oct-13	18-Oct-13	20-Nov-13	1-Dec-13		
<b>North Dam</b>													
1	NDW-3A						7.35	7.32					
2	NDW-3B						5.14	5.14					
3	TH-14-91						10.87	10.84					
4	NDW-1A						10.56	10.51					
5	NDW-1B						8.02	8.02					
6	NDW-2A						7.62	7.59					
7	NDW-2B						5.12	5.13					
8	NDW-4A						2.99	2.9					
	Pond level	NO WATER AGAINST DAM											
<b>Reclaim Dam</b>													
1	RDW-1C						14.2	14.04		14.05			
2	RDW-1B						13.54	13.48		13.47			
3	RDW-1A						9.47	9.46		9.46			
4	RDW-2C						note 1	16.73					
5	RDW-2B						14.11	14.21					
6	RDW-2A						12.15	12.15					
7	RDW-4B						9.79	9.64					
8	RDW-4A						8.31	8.3					
9	TH-18-91						13.19	13.12					
10	TH-21-91						4	3.94					
11	RDW-3A						2	1.94					
12	RDW-3B						2.32	2.26					
13	GW-1B						2.91	2.95					
	Pond level	1076.365	1076.41	1076.43	1076.44	1076.43	1076.39	1076.63		1076.87			
<b>South Dam</b>													
1	SDW-1A						5.38	5.31					
2	SDW-1B						note 5	note 5					
3	SDW-2A						10.5	10.5					
4	SDW-2B						8.2	8.12					
5	SDW-3A						13.01	13.65					
6	SDW-3B						11.94	12.37					
7	SDW-5A						9.61	9.76					
8	SDW-5B						7.08	note 5					
9	SDW-4A						4.7	4.6					
10	SDW-4B						3.06	3.09					
11	SDW-4C						2.5	2.48					
	Pond level						1089.33		1088.23				
		<b>note 1</b>	no date recorded for the readings										
		<b>note 2</b>	caretaker unable to take a reading because either the piezometer is plugged or drifted over with snow.										
		<b>note 3</b>	well was muddy										
		<b>note 4</b>	ice plug in well										
		<b>note 5</b>	dry, sensor sounded										

		13-Jan	13-Feb	13-Mar	13-Apr	13-May	13-Jun	10-Jul-13	16-Jul-13	18-Jul-13	30-Jul-13	13-Aug-13	10-Sep-13
<b>North Dam</b>													
1	NDW-3A	7.45	7.67	8.1	8	7.7	6.75		7.25			7.4	7.48
2	NDW-3B	5.14	5.14	5.13	5.13	5.08	5.01		5.14			5.14	5.14
3	TH-14-91	11.21	11.28	10.42	10.32	10.28	10.7		10.77			10.85	10.94
4	NDW-1A	9.32	9.51	11.26	11	10.44	9.83		10.49			10.6	10.67
5	NDW-1B				11.11	10.01	7.93		7.98			8.03	8.02
6	NDW-2A	8.54	9.01	9.23	9.2	8.22	6.6		7.57			7.72	7.86
7	NDW-2B	5.34	5.67	5.8	5.81	5.69	4.98					note 5	5.12
8	NDW-4A	3.12	3.34	3.6	3.32	3.07	2.38		3			3.09	3.13
	Pond level	NO WATER AGAINST DAM											
<b>Reclaim Dam</b>													
1	RDW-1C	10.24	10.36	10.55	9.21	9.23	9.33	11.62		11.56	11.7	10.65	13.52
2	RDW-1B	13.08	13.4	13.6	13.5	13.41	12.25	11.1		11.01	11.16	12.06	12.96
3	RDW-1A	13.72	14	14.18	14.03	13.92	12.8	9.49		9.48	9.49	9.55	13.5
4	RDW-2C	12.36	12.36	12.3	12.2	12.1	12.01	15.42		15.28	15.36	15.71	16.23
5	RDW-2B	14	14.1	14.16	13.02	13.25	13.3	12.71		12.69	12.71	13.03	13.57
6	RDW-2A	16.42	16.48	17	16.81	16.56	15.75	12.09		12.1	12.11	12.13	12.15
7	RDW-4B	8.32	8.32		note 4	10.05	8.13	6.92		7.28	8.21	8.26	9.13
8	RDW-4A				note 4	7.43	7.22	8.22		8.18	7.7	8.24	8.26
9	TH-18-91	13.2	13.25	13.29	13.1	12.06	11.9	11.02		10.97	11.06	11.89	12.67
10	TH-21-91	3.1	3.12	3.16	3.18	3	2.99	2.3		2.27	2.34	2.97	3.58
11	RDW-3A	1.46	2	2.14	1.99	1.76	0.95	0.25		0.21	0.28	0.91	1.55
12	RDW-3B	3.1	3.18	3.6	2.86	2	1.42	0.93		0.9	0.95	1.42	1.91
13	GW-1B	3.14	3.1	2.47	2.52	2.43	3	3.15		3.1	3.07	3.42	2.94
	Pond level	1081.03	1081.03	1076.67	1076.94	1077.44	1078.79	1080	1079.85	1079.77	1079.3	1078.42	1077.15
<b>South Dam</b>													
1	SDW-1A				note 4			note 1	5.24	5.25	5.24		5.34
2	SDW-1B				4.6	3.76	3.39	note 5	note 5	note 5	3.33	3.38	note 5
3	SDW-2A	12.3	12.3	12.26	12.28	8.04	6.51	7.56	8.61	8.74	9.25	9.9	10.27
4	SDW-2B	7.7	7.76	7.18	7.1	6.18	6.16	7.71	8.12	8.12	8.12	8.12	8.12
5	SDW-3A	12.3	12.32	12.3	12.28	11.76	10.43	11.32	11.86	11.91	12.36	12.82	13.04
6	SDW-3B				12.28	11.54	10.68	10.59	10.95	10.97	11.33	11.67	11.87
7	SDW-5A	8.11	7.76	7.5	3.42	6.02	3.88	6.68	7.57	7.69	8.33	8.86	8.76
8	SDW-5B				5.33	6.27	6.77	7.11	dry	dry	7.33	7.33	note 5
9	SDW-4A				note 2	note 2	1.4	1.53	1.8	1.88	2.38	3.23	4.08
10	SDW-4B				note 2	note 2	2.37	2.17	2.32	2.35	2.62	2.89	3.03
11	SDW-4C				note 2	note 2	2.07	2.05	2.18	2.19	2.41	2.89	2.74
	Pond level	1090.35	1090.75	1089	1090.27	1091.22	1094.42	1091.14	1090.59	1090.52	1089.79	1089.38	1089.38
		<b>note 1</b>	no date recorded for the readings										
		<b>note 2</b>	caretaker unable to take a reading because either the piezometer is plugged or drifted over with snow.										
		<b>note 3</b>	well was muddy										
		<b>note 4</b>	ice plug in well										
		<b>note 5</b>	dry, sensor sounded										

		Jan	Feb	March	April	May	June	July	Aug	Sept	Oct	Nov	Dec	
North Dam		note 1	note 1	note 1	note 1		note 1	note 1	note 1	note 1	note 1	note 1	note 1	
1	NDW-3A	7.75	8.00	7.95	7.90		7.00	7.33	7.30	7.29	7.34	7.38	7.36	
2	NDW-3B	5.14	5.14	5.06	5.04		5.07	5.11	5.12	5.13	5.13	5.13	5.13	
3	TH-14-91	10.99	11.29	11.31	11.37		10.29	11.78	10.89	10.98	10.95	10.97	11.02	
4	NDW-1A	10.86	10.90	11.06	11.17		10.00	10.55	10.76	10.66	10.68	10.70	10.86	
5	NDW-1B	9.76	8.05	7.79	7.49		7.90	7.98	7.80	7.97	8.04	8.17	9.04	
6	NDW-2A	8.71	9.05	9.09	9.15		6.98	7.84	7.77	7.98	8.02	8.22	8.22	
7	NDW-2B	4.88	5.19	5.10	4.95		5.00	5.02	5.08	5.10	5.03	5.00	5.01	
8	NDW-4A	3.65	3.45	3.25	3.21		2.60	2.96	3.00	3.07	3.04	3.01	2.99	
	Pond level	NO WATER AGAINST DAM												
Reclaim Dam														
1	RDW-1C		8.49	8.79	9.35		9.45	9.37	9.40	9.45	9.45	9.45	9.46	
2	RDW-1B	13.46	13.45	13.51	13.58		12.24	11.14	11.76	12.31	12.51	12.76	12.89	
3	RDW-1A	14.01	14.07	14.07	14.08		12.66	11.65	11.91	12.83	12.87	13.03	13.68	
4	RDW-2C	12.27	12.19	12.23	12.42		12.01	12.09	13.00	13.33	12.99	13.00	13.00	
5	RDW-2B	16.00	11.24	12.31	14.13		13.19	12.82	13.12	13.43	13.56	13.85	13.88	
6	RDW-2A	16.46	17.00	16.92	16.86		15.77	15.19	12.03	10.04	16.12	16.40	16.36	
7	RDW-4B	9.17	10.23	note 2	note 2		8.22	5.29	6.19	8.17	8.19	8.22	8.32	
8	RDW-4A	note 3	8.56	note 2	note 2		7.77	5.33	7.13	8.43	8.57	8.77	9.02	
9	TH-18-91	13.56	13.20	13.16	13.14		11.97	11.15	11.92	12.10	12.65	13.05	13.16	
10	TH-21-91	3.16	3.20	3.18	3.16		3.73	2.46	2.85	3.16	3.04	3.06	3.05	
11	RDW-3A	1.52	1.84	1.80	1.67		0.93	0.36	0.86	1.09	1.06	1.05	1.05	
12	RDW-3B	2.17	2.34	2.30	2.26		1.47	1.01	1.12	1.54	1.57	1.69	2.01	
13	GW-1B	2.96	2.90	2.86	2.86		3.02	2.95	3.14	3.97	3.67	3.42	3.16	
	Pond level	1077.09	1077.09	1077.09	1077.09		1078.96	1079.61	1078.96	1078.51	1076.67	1076.67	1076.67	
South Dam														
1	SDW-1A	5.00	4.70	note 4	note 4		5.08	5.24	5.30	5.39	5.32	5.37	5.16	
2	SDW-1B	3.39	3.39		4.67		3.43	3.40	3.40	3.39	3.40	3.44	3.40	
3	SDW-2A	13.16	note 2	note 2	note 2		6.76	7.00	7.24	7.50	8.67	8.75	12.34	
4	SDW-2B	note 2	note 2	note 2	note 2		6.45	7.00		7.33	7.57	7.69	8.02	
5	SDW-3A	note 2	note 2	note 2	note 2		12.27	10.70	10.98	11.33	11.62	12.03	12.30	
6	SDW-3B	11.76	12.06	12.16	12.37		12.57	10.49	10.90	10.86	10.99	11.27	11.48	
7	SDW-5A	note 2	note 2	note 2	note 2		4.08	5.29	5.90	6.10	6.45	6.97	8.22	
8	SDW-5B	note 2	note 2	note 2	note 2		6.40	5.33	6.10	7.17	7.01	7.00	6.80	
9	SDW-4A	note 2	note 2	note 2	note 2		1.07	1.03	1.52	2.07	2.23	3.43	3.40	
10	SDW-4B	note 2	note 2	note 2	note 2		2.33	2.48	2.50	2.55	2.57	2.67	2.70	
11	SDW-4C	note 2	note 2	note 2	note 2		2.01	2.19	2.30	2.38	2.35	2.45	2.32	
	Pond level	1089.00	1089.00	1089.00	1089.00		1092.31	1092.21	1092.20	1092.20	1089.00	1089.00	1089.00	
		<b>note 1</b>	no date recorded for the readings											
		<b>note 2</b>	caretaker unable to take a reading because either the piezometer is plugged or drifted over with snow.											
		<b>note 3</b>	well was muddy											
		<b>note 4</b>	ice plug in well											

No sampling conducted in May due to extreme snow conditions

		Jan	Feb	March	April	May	June	July	Aug	Sept	Oct	Nov	Dec
North Dam		21-Jan-11	12-Feb-11	13-Mar-11	5-Apr-11	23-May-11	23-Jun-11	18-Jul-11	22-Aug-11	19-Sep-11	8-Oct-11	15-Nov-11	5-Dec-11
1	NDW-3A	7.94	7.83	8.04	8.28	7.03	6.82	7.02	7.32	7.21	7.10	7.26	7.46
2	NDW-3B	5.08	5.08	5.10	5.10	5.12	5.14	5.14	5.13	5.13	5.12	5.13	5.14
3	TH-14-91	11.30	11.17	11.42	11.63	11.02	10.15	10.43	10.68	11.01	11.72	11.48	10.93
4	NDW-1A	11.17	11.07	11.30	11.49	10.79	9.71	10.03	10.41	10.68	10.26	10.43	10.75
5	NDW-1B	8.13	8.06	8.22	8.97	8.45	8.00	7.98	7.98	8.45	8.96	9.47	9.90
6	NDW-2A	9.22	8.97	9.56	9.71	7.03	6.65	7.00	7.61	7.45	7.25	7.82	8.36
7	NDW-2B	5.08	5.07	5.10	5.11	5.10	5.10	5.08	5.07	5.06	5.06	4.97	4.73
8	NDW-4A	3.33	3.32	3.34	3.32	2.80	2.19	2.46	3.02	2.45	2.83	2.92	3.01
	Pond level	n.a	n.a	n.a	n.a	n.a	n.a	n.a	n.a	n.a	n.a	n.a	n.a
<b>Reclaim Dam</b>													
1	RDW-1C	9.51	9.50	9.50	9.48	9.40	9.38	9.40	9.42	9.42	9.41	9.43	9.46
2	RDW-1B	13.12	13.22	13.34	14.06	13.07	12.39	12.01	11.78	11.89	12.10	12.67	13.13
3	RDW-1A	13.52	13.65	13.85	14.00	13.10	12.38	12.29	12.25	12.32	12.57	12.40	13.74
4	RDW-2C	12.35	12.41	note 1	12.19	12.10	12.00	12.01	12.03	12.16	12.29	12.45	12.96
5	RDW-2B	13.77	13.80	note 1	14.10	13.76	13.48	13.40	13.31	13.17	13.12	13.42	13.90
6	RDW-2A	16.21	16.40	16.61	16.68	16.05	15.87	15.62	15.55	15.62	15.82	16.08	16.34
7	RDW-4B	8.27	8.32	8.36	note 1	8.35	8.29	8.32	8.37	8.39	8.52	8.46	8.41
8	RDW-4A	9.60	9.65	9.71	note 1	8.56	8.39	9.71	8.33	8.37	8.50	9.27	10.00
9	TH-18-91	12.92	12.97	13.14	25.90	16.02	12.14	11.73	11.60	11.72	11.92	12.67	13.91
10	TH-21-91	3.69	3.82	4.00	4.00	3.61	3.10	2.81	2.73	2.79	2.92	3.00	3.10
11	RDW-3A	1.77	note 1	note 1	note 1	1.10	1.01	0.91	0.69	0.75	0.88	0.92	1.04
12	RDW-3B	2.08	2.16	2.26	7.00	1.62	1.57	1.37	1.25	1.31	1.40	1.90	2.02
13	GW-1B	2.94	2.96	2.92	3.02	2.98	2.94	2.98	3.06	3.00	2.93	2.96	3.02
	Pond level	1076.00	1076.00	1076.00	1076.00	1078.00	1078.15	1078.45	1078.91	1078.72	1078.65	1076.94	1076.67
<b>South Dam</b>													
1	SDW-1A	5.71	6.00	6.50	6.10	5.71	5.20	5.16	5.14	5.08	5.07	5.06	5.10
2	SDW-1B	3.35	3.35	3.35	3.35	3.17	3.15	3.15	3.41	3.39	3.38	3.38	3.36
3	SDW-2A	note 1	note 1	note 1	note 1	8.79	8.66	8.60	8.52	8.48	13.14	13.10	13.08
4	SDW-2B	note 1	note 1	note 1	note 1	8.45	8.15	8.14	8.14	8.12	8.12	8.10	8.08
5	SDW-3A	13.23	13.35	13.47	note 1	12.01	11.46	12.01	14.96	13.97	12.40	12.38	12.34
6	SDW-3B	12.37	12.42	12.52	note 1	12.13	12.07	12.00	11.85	11.71	11.68	11.62	11.58
7	SDW-5A	note 1	note 1	note 1	note 1	6.44	6.26	7.00	7.42	7.66	8.44	8.42	8.40
8	SDW-5B	note 1	note 1	note 1	note 1	7.41	7.38	7.27	7.15	6.01	5.97	5.92	5.80
9	SDW-4A	note 1	note 1	note 1	note 1	2.25	2.20	2.13	2.11	2.45	2.75	2.72	2.70
10	SDW-4B	note 1	note 1	note 1	note 1	2.90	2.76	2.70	2.68	2.69	2.78	2.76	2.74
11	SDW-4C	note 1	note 1	note 1	note 1	2.70	2.42	2.38	2.33	2.52	2.24	2.22	2.18
	Pond level	1091.75	1091.75	1091.75	1091.75	1090.75	1091.04	1089.00	1089.00	1089.00	1089.00	1089.00	1089.00
		<b>note 1</b>	caretaker unable to take a reading because either the piezometer is plugged or drifted over with snow.										
		<b>note 2</b>	caretaker unable to reach ponds because the snow is like sugar thus dangerous to snowmobile on.										

		Jan	Feb	March	April	May	June	July	Aug	Sept	Oct	Nov	Dec
		13-Jan-10	16-Feb-10		11-Apr-10	4-May-10	15-Jun-10	20-Jul-10	16-Aug-10	21-Sep-10	23-Oct-10	14-Nov-10	11-Dec-10
North Dam													
1	NDW-3A	7.45	7.80		7.35	7.25	7.10	7.35	7.61	7.63	7.65	7.71	7.70
2	NDW-3B	5.21	5.51		5.03	5.25	5.40	5.16	5.09	5.07	5.06	5.08	5.03
3	TH-14-91	10.21	10.12		12.44	11.02	10.47	10.54	10.96	11.01	11.08	11.12	11.10
4	NDW-1A	10.41	10.25		10.71	10.35	10.12	10.32	10.79	10.85	10.90	10.94	10.90
5	NDW-1B	10.25	7.86		7.95	7.90	7.98	7.97	7.96	7.95	7.95	7.94	7.94
6	NDW-2A	7.85	8.42		7.86	7.42	7.29	8.01	8.46	8.52	8.75	8.77	8.76
7	NDW-2B	5.10	5.12		5.10	5.10	5.11	5.00	4.93	4.95	5.02	5.06	5.03
8	NDW-4A	2.71	2.60		2.70	2.74	2.79	3.02	3.36	3.37	3.39	3.32	3.21
	Pond level	n.a	n.a		n.a	n.a	n.a	n.a	n.a	n.a	n.a	n.a	n.a
Reclaim Dam													
1	RDW-1C	9.45	9.46		9.49	9.49	9.44	9.45	9.45	9.45	9.46	9.53	9.51
2	RDW-1B	11.17	11.30		11.68	11.49	11.23	12.17	12.72	12.79	12.43	13.01	13.00
3	RDW-1A	12.40	11.69		12.25	12.00	11.60	12.58	12.56	12.91	13.38	13.40	13.38
4	RDW-2C	12.62	12.84		12.21	12.23	12.24	12.25	12.29	12.27	12.25	12.25	12.20
5	RDW-2B	12.45	12.55		13.20	12.82	12.69	13.00	13.14	13.48	13.67	13.70	13.60
6	RDW-2A	15.00	14.42		15.30	15.01	14.63	14.67	15.35	15.49	15.98	16.00	
7	RDW-4B	8.01	7.94		8.27	8.21	8.18	8.14	8.28	8.27	8.26	8.25	8.25
8	RDW-4A	8.45	6.87		8.07	7.92	7.72	8.00	8.42	8.99	9.52	9.56	9.54
9	TH-18-91	11.55	11.45		11.78	11.52	11.11	11.43	11.98	12.13	12.75	12.81	12.80
10	TH-21-91	2.35	2.10		2.83	2.53	2.37	2.97	3.03	3.27	3.57	3.61	3.60
11	RDW-3A	0.70	0.18		0.67	0.51	0.32	0.65	0.95	1.23	1.59	1.63	1.62
12	RDW-3B	1.00	0.64		1.05	1.00	0.85	1.01	1.39	1.72	1.94	2.00	2.00
13	GW-1B	2.41	2.30		2.61	2.82	3.05	3.05	3.04	3.02	3.00	2.98	2.97
	Pond level	1079.04	1079.01		1078.46	1078.56	1078.28	1078.43	1078.70	1077.28	1076.20	1076.00	1076.00
South Dam													
1	SDW-1A	5.00	4.61		6.57	6.40	5.10	5.25	5.48	5.52	5.61	5.67	5.63
2	SDW-1B	3.44	3.50		3.38	3.38	3.37	3.40	3.40	3.37	3.35	3.35	3.35
3	SDW-2A	7.87	10.56		10.58	9.11	7.96	9.31	9.39	9.57	10.35		
4	SDW-2B	8.00	note 1		8.18	8.01	7.93	8.16	8.21	8.25	8.28		
5	SDW-3A	11.45	note 1		12.81	12.00	11.28	11.37	12.29	12.43	13.06	13.10	
6	SDW-3B	11.17	10.84		12.87	12.02	11.44	11.51	11.85	11.91	12.33	12.32	
7	SDW-5A	7.15			8.14	6.11	6.31	7.02	8.54	8.61	8.92	8.99	8.95
8	SDW-5B	note 1	note 1		1.62	5.03	4.99	5.16	7.42	7.40	7.35	7.35	7.31
9	SDW-4A	note 1	note 1		1.91	1.45	1.39	2.06	0.74	3.42	3.92	4.01	3.95
10	SDW-4B	note 1	note 1		2.60	2.50	2.42	2.56	2.86	2.92	3.08	3.12	3.00
11	SDW-4C	note 1	note 1		2.35	2.25	2.19	2.39	2.66	2.73	2.87	2.97	2.94
	Pond level	1091.25	1091.37		1091.25	1091.25	1091.75	1091.75	1091.75	1091.75	1091.75	1091.75	1091.75
		<b>note 1</b>	caretaker unable to take a reading because either the piezometer is plugged or drifted over with snow.										
		<b>note 2</b>	caretaker unable to reach ponds because the snow is like sugar thus dangerous to snowmobile on.										

		Jan	Feb	March	April	May	June	July	Aug	Sept	Oct	Nov	Dec			
		note 1	note 1	note 1	13-Apr-09	18-May-09	13-Jun-09	20-Jul-09	6-Aug-09	24-Sep-09	23-Oct-09	15-Nov-09	9-Dec-09			
North Dam																
1	NDW-3A	no reading because the piezometers are burried in snow	no reading because the piezometers are burried in snow	no reading because the piezometers are burried in snow	9.00	6.71	6.79	7.21	7.40	7.08	7.06	7.07	7.11			
2	NDW-3B				blocked	5.10	5.10	5.11	5.12	5.10	5.10	5.10	5.10	5.10	5.11	
3	TH-14-91				15.34	10.45	10.19	10.71	10.84	10.65	10.67	10.67	10.70	10.70	10.71	
4	NDW-1A				blocked	10.21	9.91	10.43	10.60	10.33	10.33	10.33	10.35	10.35	10.37	
5	NDW-1B				blocked	7.94	7.95	8.02	8.17	7.94	7.95	7.95	7.97	10.97		
6	NDW-2A				5.10	7.14	6.98	7.45	7.50	7.60	7.63	7.65	7.65	7.68		
7	NDW-2B				9.86	5.12	5.12	5.11	5.10	5.05	5.10	5.12	5.10	5.12	5.10	
8	NDW-4A				covered	2.64	2.63	2.84	2.91	2.76	2.77	2.79	2.77	2.79	2.77	
	Pond level				n.a.	n.a.	n.a.	n.a.	n.a.	n.a.	n.a.	n.a.	n.a.	n.a.	n.a.	n.a.
Reclaim Dam																
1	RDW-1C							covered	9.32	9.42	12.10	12.16	9.47	9.46	9.45	9.43
2	RDW-1B							covered	10.95	12.11	12.02	12.02	11.12	11.10	11.12	11.15
3	RDW-1A							16.00	11.01	12.50	10.10	12.31	12.10	12.10	12.10	12.15
4	RDW-2C				12.17	11.62	12.01	15.21	12.16	12.00	12.04	12.05	12.07			
5	RDW-2B				13.46	11.65	12.75	13.01	13.16	12.97	12.95	12.93	12.95			
6	RDW-2A				12.92	12.03	14.80	12.05	15.28	15.10	15.08	15.12	15.15			
7	RDW-4B				12.54	7.45	7.81	8.60	8.07	8.02	8.00	8.05	8.07			
8	RDW-4A				9.46	7.91	8.51	8.05	8.63	8.34	8.30	8.36	8.39			
9	TH-18-91				12.40	11.23	13.12	11.17	11.98	11.65	11.69	11.68	11.70			
10	TH-21-91				covered	2.10	2.75	2.86	2.98	2.65	2.67	2.67	2.70			
11	RDW-3A				covered	0.46	0.79	0.89	0.99	0.70	0.65	0.70	0.75			
12	RDW-3B				covered	0.91	1.29	1.31	1.45	1.23	1.11	1.24	1.26			
13	GW-1B				1.19	2.08	2.98	2.25	2.27	3.50	2.67	2.43	2.51			
	Pond level				1079.09	1079.67	1069.05	1078.51	1078.71	1079.30	1079.08	1079.03	1079.00			
South Dam																
1	SDW-1A				5.95	5.81	5.18	5.17	5.23	5.10	5.10	5.10	5.12			
2	SDW-1B				3.36	3.45	3.37	3.35	3.35	3.40	3.40	3.40	3.40			
3	SDW-2A				blocked	9.02	6.99	7.70	6.90	8.12	8.00	8.00	7.98			
4	SDW-2B				blocked	9.10	6.72	7.00	6.50	8.10	8.12	8.10	8.05			
5	SDW-3A				3.20	8.02	10.31	10.28	10.16	11.47	11.45	11.44	11.40			
6	SDW-3B				blocked	8.00	10.88	10.44	10.34	10.73	11.70	11.70	11.67			
7	SDW-5A				blocked	7.12	4.19	4.65	4.21	7.07	7.05	7.03	7.00			
8	SDW-5B				7.67	7.36		6.18	6.18	3.78	3.80	3.77	3.75			
9	SDW-4A				buried	1.33	1.69	1.16	1.08	1.70	1.69	1.68	1.68			
10	SDW-4B				buried	2.03	2.39	2.10	2.34	2.39	2.35	2.35	2.33			
11	SDW-4C				buried	1.98	2.09	2.05	2.06	2.00	2.03	1.99	1.96			
	Pond level				1093.07	1091.24	1093.85	1093.87	1093.87	1091.26	1091.20	1091.20	1091.20			
		note 1	No readings because the piezometers are burried in snow													

		Jan	Feb	March	April	May	June	July	Aug	Sept	Oct	Nov	Dec
North Dam		4-Jan-08	11-Feb-08	3-Mar-08	2-Apr-08		17-Jun-08	19-Jul-08	15-Aug-08	3-Sep-08	10-Oct-08	14-Nov-08	1-Dec-08
1	NDW-3A	7.30	7.34	7.35	7.33	No samples taken in May because of dangerous snow conditions	6.85	6.93	7.02	7.13	7.11	7.10	7.10
2	NDW-3B	5.40	5.42	5.42	5.40		5.10	5.10	5.09	5.09	5.08	5.06	5.05
3	TH-14-91	11.70	11.75	11.71	11.70		10.62	10.62	10.63	10.64	10.57	10.55	10.51
4	NDW-1A	10.50	10.53	10.46	10.51		10.36	10.38	10.40	10.41	10.42	10.41	10.40
5	NDW-1B	8.15	8.19	8.12	8.15		7.93	7.94	7.95	7.97	10.98	7.96	7.95
6	NDW-2A	7.81	7.85	7.80	7.82		7.30	7.41	7.50	7.58	7.57	7.53	7.52
7	NDW-2B	5.80	5.83	5.75	5.80		5.10	5.11	5.12	5.11	5.10	5.09	5.10
8	NDW-4A	2.65	2.60	2.64	2.63		2.70	2.82	2.87	2.91	2.87	2.83	2.81
	Pond level	n.a.	n.a.	n.a.	n.a.		n.a.	n.a.	n.a.	n.a.	n.a.	n.a.	n.a.
Reclaim Dam													
1	RDW-1C	9.28	9.25	9.24	9.25		11.97	12.05	11.98	12.01	12.00	11.97	11.96
2	RDW-1B	11.70	11.57	11.65	11.63		11.69	11.98	11.70	11.71	11.69	11.67	11.61
3	RDW-1A	11.97	11.95	11.94	11.91		9.35	9.40	9.37	9.36	9.33	9.32	9.30
4	RDW-2C	11.71	11.67	11.68	11.65		15.03	15.16	15.02	15.14	15.07	15.05	15.00
5	RDW-2B	11.94	11.90	11.88	11.87		12.68	12.75	12.70	12.73	12.69	12.65	12.62
6	RDW-2A	14.51	14.50	14.48	14.49		11.93	12.08	11.96	12.02	12.00	11.97	11.93
7	RDW-4B	8.00	7.97	7.95	8.01		8.37	8.44	8.40	8.42	11.39	8.35	8.31
8	RDW-4A	8.11	8.07	8.05	8.10		8.00	8.05	8.02	8.02	7.97	7.94	7.91
9	TH-18-91	11.46	11.42	11.40	11.40		11.49	11.65	11.53	11.61	11.57	11.52	11.50
10	TH-21-91	2.11	2.11	2.10	2.12		2.56	2.81	2.57	2.79	2.68	2.63	2.60
11	RDW-3A	0.53	0.50	0.47	0.50	0.59	0.73	0.60	0.67	0.65	0.62	0.60	
12	RDW-3B	1.00	0.98	0.97	0.98	1.11	1.22	1.13	1.20	1.15	1.10	1.01	
13	GW-1B	2.24	2.21	2.20	2.14	2.21	2.25	2.22	2.24	2.24	2.20	2.18	
	Pond level	1079.13	1079.26	1079.31	1079.43	1078.91	1078.43	1078.97	1078.85	1078.87	1078.88	1078.93	
South Dam													
1	SDW-1A	5.80	5.81	5.80	5.80	5.09	5.12	5.20	5.31	5.28	5.30	5.27	
2	SDW-1B	3.70	3.70	3.70	3.70	3.35	3.36	3.37	3.37	3.37	3.35	3.37	
3	SDW-2A	10.01	10.02	10.00	10.11	7.06	7.23	7.51	8.08	8.10	8.12	8.14	
4	SDW-2B	10.13	10.17	10.10	10.13	7.11	7.30	7.67	8.12	8.12	8.15	8.16	
5	SDW-3A	12.12	12.18	12.13	12.14	10.10	10.41	10.65	11.17	11.14	11.20	11.21	
6	SDW-3B	12.11	12.12	12.09	12.07	10.54	10.65	10.83	10.65	10.70	10.71	10.80	
7	SDW-5A	8.02	8.04	8.00	8.05	4.35	4.89	5.35	6.30	6.35	6.40	6.44	
8	SDW-5B	8.30	8.35	8.30	8.32	6.13	6.19	6.25	6.53	6.57	6.62	6.67	
9	SDW-4A	4.03	4.05	4.00	4.09	1.00	1.23	1.57	1.79	1.80	1.83	1.87	
10	SDW-4B	5.80	5.82	5.80	5.81	1.75	1.99	2.13	2.43	2.48	2.50	2.56	
11	SDW-4C	5.47	5.49	5.47	5.48	1.75	1.98	2.14	2.18	2.20	2.25	2.30	
	Pond level	1094.70	1092.68	1092.65	1092.66	1094.06	1093.89	1093.57	1093.34	1093.30	1093.21	1093.12	

		Jan	Feb	March	April	May	June	July	Aug	Sept	Oct	Nov	Dec
North Dam		19-Jan-07	18-Feb-07	21-Mar-07	11-Apr-07	22-May-07	9-Jun-07	19-Jul-07	12-Aug-07	18-Sep-07	17-Oct-07	15-Nov-07	3-Dec-07
1	NDW-3A	7.28	7.26	7.25	7.69	7.77	6.66	6.77	6.99	7.14	7.35	7.30	7.32
2	NDW-3B	5.00	5.00	5.00	5.17		5.10	5.12	5.15	5.72	5.40	5.38	5.41
3	TH-14-91	11.00	11.02	11.00	11.31	11.84	10.30	10.25	10.10	10.71	11.75	11.72	11.73
4	NDW-1A	11.07	11.07	11.05	11.42	11.88	10.04	10.06	10.36	10.46	10.50	10.47	10.49
5	NDW-1B	7.77	7.69	7.70	7.81		7.92	7.93	7.95	7.96	8.13	8.12	8.15
6	NDW-2A	8.81	8.80	8.75	9.27	9.80	7.05	7.09	7.22	7.58	7.84	7.76	7.84
7	NDW-2B	4.70	4.68	4.70	4.97	5.08	5.08	5.04	5.02	5.66	5.81	5.75	5.80
8	NDW-4A	3.27	3.11	3.10	3.40	3.42	2.56	2.66	2.94	2.99	2.67	2.66	2.65
	Pond level	n/a	n/a	n/a	n/a	n/a	n/a	n/a	n/a	n/a	n/a	n/a	n/a
Reclaim Dam													
1	RDW-1C	9.41	9.40	9.38	9.39	9.40	9.44	9.56	9.86	9.44	9.40	9.40	9.30
2	RDW-1B	11.72	11.70	11.68	11.68	11.69	11.11	11.43	11.75	11.96	11.87	11.78	11.72
3	RDW-1A	11.89	11.85	11.86	11.88		7.01	11.56	11.92	12.17	12.06	12.03	11.98
4	RDW-2C	11.90	11.90	11.89	11.91	12.10	12.00	12.01	12.05	12.00	11.57	11.86	11.72
5	RDW-2B	12.76	12.75	12.73	12.72	12.72	12.29	12.36	12.75	12.96	12.80	12.36	11.94
6	RDW-2A	14.92	14.90	14.85	14.80	14.72	14.17	14.41	14.82	15.01	14.76	14.55	14.53
7	RDW-4B	8.32	8.32	8.31	8.54	8.90	8.14	8.17	8.22	8.26	8.24	8.12	8.01
8	RDW-4A	8.32	8.30	8.30	8.13	8.03	7.38	7.96	8.37	8.45	8.53	8.30	8.14
9	TH-18-91	11.60	11.57	11.53	11.45	11.32	11.08	11.08	11.07	11.89	11.86	11.52	11.48
10	TH-21-91	2.67	2.65	2.61	2.50	2.57	2.23	2.67	2.43	2.68	2.60	2.32	2.12
11	RDW-3A	0.79	0.75	0.71	0.77	0.87	2.07	0.71	0.79	0.82	0.80	0.72	0.50
12	RDW-3B	1.31	1.30	1.28	1.17	1.01	0.88	1.24	2.00	1.34	1.35	1.12	1.01
13	GW-1B	2.72	2.64	2.60	2.60	2.61	2.27	2.39	2.79	2.48	2.46	2.30	2.24
	Pond level	1078.98	1078.98	1078.98	1079.02	1079.29	1079.09	1078.45	1078.32	1078.84	1078.98	1079.03	1079.14
South Dam													
1	SDW-1A	5.37	5.35	5.32	5.30	5.28	3.39	5.02	5.07	5.33	5.82	5.82	5.80
2	SDW-1B	3.38	3.37	3.37	3.35		5.01	3.39	3.43	3.39	3.70	3.70	3.70
3	SDW-2A	7.00	6.97	6.95	6.94	6.91		6.90	6.88	7.22	9.10	9.97	10.02
4	SDW-2B	6.99	6.98	6.98	7.34	7.90	7.02	6.89	6.77	7.23	9.28	9.98	10.14
5	SDW-3A	10.38	10.35	10.33	10.47	10.98	10.10	10.22	10.32	10.63	11.67	11.85	12.12
6	SDW-3B	10.28	10.28	10.29	10.35	10.43	10.20	11.97	12.19	10.16	11.62	12.00	12.08
7	SDW-5A	5.00	4.97	4.89	4.96	5.13	4.23	4.29	4.41	5.38	7.11	7.56	8.00
8	SDW-5B	6.44	6.43	6.41	6.92	7.13	6.22	6.58	5.10	6.12	7.96	8.04	8.32
9	SDW-4A	0.91	0.90	0.90	0.93	0.98	0.66	0.88	1.16	1.15	2.01	3.16	4.02
10	SDW-4B	2.28	2.27	2.25	2.07	1.98	1.97	2.03	2.22	2.33	3.00	5.62	5.81
11	SDW-4C	1.92	1.90	1.88	2.01	2.49	1.92	1.97	2.01	2.20	2.87	5.38	5.46
	Pond level	1093.86	1093.91	1093.96	1094.00	1094.02	not recorded	1094.66	1094.66	1093.56	1093.01	1093.01	1092.71

		Jan	Feb	March	April	May	June	July	Aug	Sept	Oct	Nov	Dec	
North Dam		30-Jan-06	9-Feb-06	13-Mar-06		19-May-06	13-Jun-06	5-Jul-06	14-Aug-06	15-Sep-06	15-Oct-06	1-Nov-06	12-Dec-06	
1	NDW-3A	6.47	6.40	6.41	No data because of poor snow conditions	6.51	6.87	7.58	6.87	7.78	7.37	7.69	7.30	
2	NDW-3B	4.08	4.01	4.00		4.17	5.11	4.99	5.11	5.05	5.04	5.17	5.00	
3	TH-14-91	11.03	11.00	11.02		10.89	10.62	10.95	10.62	11.29	11.19	11.23	11.03	
4	NDW-1A	10.80	10.77	10.74		10.40	10.35	10.78	10.35	11.22	11.12	11.15	11.08	
5	NDW-1B	10.58	10.50	10.42		8.81	7.92	7.98	7.92	7.99	7.88	7.93	7.76	
6	NDW-2A	8.80	8.78	8.71		8.17	7.28	8.06	7.28	9.06	8.89	8.88	8.85	
7	NDW-2B	4.80	4.81	4.80		4.85	5.12	5.97	5.12	5.15	4.79	4.80	4.75	
8	NDW-4A	3.08	3.03	3.07		2.99	2.66	3.38	2.66	3.44	3.42	3.51	3.40	
	Pond level													
Reclaim Dam														
1	RDW-1C	9.60	9.6	9.58		9.51	9.49	9.40	9.36	9.86	9.46	9.52	9.38	
2	RDW-1B	12.30	12.32	12.30		11.67	10.62	11.88	11.92	11.95	11.95	11.92	11.76	
3	RDW-1A	12.35	12.31	12.32		12.12	10.29	12.05	12.09	12.13	12.06	12.00	12.00	
4	RDW-2C	12.34	12.37	12.35		12.31	12.10	11.35	12.03	12.07	12.04	12.02	11.98	
5	RDW-2B	12.16	12.13	12.01		12.11	12.25	12.74	12.78	12.88	12.89	12.92	12.78	
6	RDW-2A	10.00	10.17	10.15		11.16	14.23	14.56	14.95	15.03	15.00	14.98	14.93	
7	RDW-4B	8.40	8.43	8.40		8.36	8.25	8.22	8.38	8.22	8.36	8.16	8.32	
8	RDW-4A	8.65	8.71	8.70		7.96	6.65	8.53	8.47	8.42	8.39	8.35	8.33	
9	TH-18-91	12.10	12.09	12.10		11.67	10.79	11.88	11.86	11.87	11.79	11.68	11.62	
10	TH-21-91	2.97	2.95	2.91		2.32	1.96	2.78	2.76	2.83	2.72	2.70	2.70	
11	RDW-3A	1.10	1.11	1.14		0.76	0.02	0.78	0.88	0.85	0.82	0.80	0.80	
12	RDW-3B	1.56	1.52	1.50		1.11	0.75	1.39	1.39	1.40	1.32	1.28	1.30	
13	GW-1B	2.79	2.82	2.80		2.72	2.65	2.72	2.67			2.66		
	Pond level	1079.83	1079.84	1079.80		1079.93	1080.39	1078.53	1078.65		1078.90	1078.94	1078.94	
South Dam														
1	SDW-1A	5.62	5.67	5.62	5.55	5.10	5.30	5.27	5.40	5.41	5.43	5.38		
2	SDW-1B	3.60	3.60	3.60	3.54		3.86	3.89		3.37		3.37		
3	SDW-2A	9.00	9.09	9.10	8.23	7.06	6.87	6.91	7.00	7.08	7.01	7.02		
4	SDW-2B	9.20	9.23	9.20	8.20	7.10	7.00	7.16	6.97	7.01	6.92	7.00		
5	SDW-3A	11.53	11.50	11.58	11.06	10.11	10.25	10.29	10.44	10.39	10.51	10.38		
6	SDW-3B	11.46	11.50	11.50	11.21	10.55	10.40	10.43	10.27	10.33	10.40	10.30		
7	SDW-5A	7.11	7.10	7.00	6.97	4.34	4.61	4.67	4.93	5.07	5.00	5.08		
8	SDW-5B	7.81	7.84	7.80	7.11	6.13	6.53	6.54	6.55	6.46	6.57	6.45		
9	SDW-4A	1.67	1.71	1.69	1.16	0.01	1.23	1.27	0.95	0.99	0.97	0.95		
10	SDW-4B	2.60	2.65	2.60	2.32	1.74	2.42	2.40	2.30	2.35	2.32	2.30		
11	SDW-4C	2.41	2.42	2.40	2.30	1.74	2.12	2.16	1.93	1.94	1.97	1.92		
	Pond level	1092.50	1092.80	1093.20	1093.60	1094.26	1094.16	1094.01		1093.54	1093.61	1093.78		

		Jan	April	May	June	July	Aug	Sept	Oct	Nov	Dec	Jan	Feb
		1/31/2005	4/30/2005	5/31/2005	6/30/2005	7/30/2005	8/16/2005	9/30/2005	10/14/2005	11/30/2005	12/31/2005	1/30/2006	2/9/2006
North Dam													
1	NDW-3A	8.25	8.02	7.69	7.25	7.49	7.46	5.73	7.60	7.10	6.62	6.47	6.40
2	NDW-3B	5.1	5.00	4.91	5.14	5.08	5.09	5.09	5.05	4.82	4.10	4.08	4.01
3	TH-14-91	11.98	11.93	11.87		11.97	11.01	11.22	11.31	11.16	11.06	11.03	11.00
4	NDW-1A	12.13	11.98	11.94	10.51	10.61	10.90	11.14	11.18	11.10	10.88	10.80	10.77
5	NDW-1B	8	8.13	8.84	8.01	8.00	8.02	7.97	7.97	7.84	7.62	10.58	10.50
6	NDW-2A	10.33	9.07	9.68	7.64	7.90	8.33	8.94	9.19	8.92	8.84	8.80	8.78
7	NDW-2B	5.13	5.13	5.04	5.11	5.11	5.10	5.07	5.01	4.96	4.82	4.80	4.81
8	NDW-4A	3.5 dry	3.57	3.38	2.98	3.18	3.35	3.48	3.44	3.16	3.10	3.08	3.03
	Pond level												
Reclaim Dam													
1	RDW-1C	9.38	9.49	4.59	9.37	9.46	9.46	9.67	9.60	958.00	9.60	9.60	9.6
2	RDW-1B	13.01	12.92	12.88	11.92	11.24	11.24	12.23	12.31	12.28	12.24	12.30	12.32
3	RDW-1A	13.17	13.02	13.00	12.01	11.40	11.40	12.38	12.41	12.40	12.36	12.35	12.31
4	RDW-2C	11.9	12.00	12.10	12.03	12.06	12.28	12.07	12.03	11.76	11.68	12.34	12.37
5	RDW-2B	13.59	13.45	13.49	12.66	12.46	12.89	13.01	13.09	13.10	13.15	12.16	12.13
6	RDW-2A	15.71	14.91	15.41	14.52	12.29	12.62	15.14	15.23	15.12	15.06	10.00	10.17
7	RDW-4B	8.51 dry	8.41	8.30	8.37	8.26	8.33	8.36	8.36	8.36	8.38	8.40	8.43
8	RDW-4A	9.32	8.57	8.87	8.27	7.74	8.57	8.65	8.67	8.60	8.62	8.65	8.71
9	TH-18-91	12.82	12.72	12.70	11.77	11.26	11.96	12.14	12.17	12.12	12.11	12.10	12.09
10	TH-21-91	3.52	3.47	3.41	2.74	8.34	2.43	3.01	2.88	2.98	2.94	2.97	2.95
11	RDW-3A	1.56	1.50	1.50	0.85	0.46	1.00	1.10	1.14	1.10	1.08	1.10	1.11
12	RDW-3B	2	1.92	1.87	1.35	1.07	1.47	1.55	1.52	1.54	1.59	1.56	1.52
13	GW-1B	2.90	1.90	1.90	2.80	2.85	2.96	2.70	2.50	2.62	2.84	2.79	2.82
	Pond level	1077.48		1077.55	1077.42	1079.47	1078.47	1078.47	1078.34	1078.42	1078.60	1079.83	1079.84
South Dam													
1	SDW-1A	5.92	5.92	5.87	5.19	5.32	5.43	5.69	5.52	5.58	5.60	5.62	5.67
2	SDW-1B	3.62	3.75	3.80	3.60	3.63	3.61	3.59	3.62	3.62	3.62	3.60	3.60
3	SDW-2A	8.16	8.21	8.48	7.10	8.33	8.40	8.68	8.90	9.00	9.02	9.00	9.09
4	SDW-2B	8.16	8.07	8.02	7.09	8.10	8.16	8.08	8.18	8.20	8.24	9.20	9.23
5	SDW-3A	blocked	blocked	11.28	10.26	11.04	11.20	11.29	11.91	11.92	11.96	11.53	11.50
6	SDW-3B	10.66	10.29	9.16	10.30	10.93	11.11	11.16	12.39	12.40	12.42	11.46	11.50
7	SDW-5A	blocked	blocked	blocked	4.66	6.63	6.60	6.68	6.78	6.88	7.00	7.11	7.10
8	SDW-5B	blocked	blocked	blocked	5.67	7.27	7.60	7.57	7.41	7.62	7.80	7.81	7.84
9	SDW-4A	NA	blocked	blocked		1.83	1.80	1.84	1.84	1.76	1.70	1.67	1.71
10	SDW-4B	NA	hidden snow	2.18	2.33	2.51	2.51	2.56	2.36	2.56	2.65	2.60	2.65
11	SDW-4C	NA	hidden snow	2.00	1.95	2.17	2.27	2.32	2.40	2.42	2.44	2.41	2.42
	Pond level	1093.61		1093.60	1093.75	1093.10	1093.30	1093.10	1093.70	1092.80	1093.00	1092.50	1092.80

												2005										
												January										
												Jan	April	May	June	July	Aug	Sept	Oct	Nov	Dec	
												1/11/2005	4/30/2004	5/31/2004	6/30/2004	7/31/2004	8/31/2004	9/30/2004	10/31/2004	11/30/2004	12/31/2004	
North Dam																						
1	NDW-3A	8.27	8.84	8.81	7.34	8.02	7.96	7.9	7.85	7.96	7.98	8.25										
2	NDW-3B	5.43	5.4	5.41	5.38	5.41	5.11	5.09	5.03	5.06	5.09	5.1										
3	TH-14-91	11.82	12.26	11.73	11.74	11.16	11.91	11.52	11.5	11.62	11.72	11.98										
4	NDW-1A	8.1	12.41	11.92	10.5	11.02	11.01	11.02	11.01	11.07	11.52	12.13										
5	NDW-1B	12.8	8.1	8.11	8.15	8.17	8.35	8.17	8.16	8.12	8.08	8										
6	NDW-2A	8.71	11.2	11.97	7.83	8.68	8.97	8.68	8.64	8.75	8.33	10.33										
7	NDW-2B	5.31	5.3	7.63	5.82	5.38	5.12	5.38	5.29	5.2	5.24	5.13										
8	NDW-4A	3.57	3.62	3.67	2.59	3.63 dry	3.45	3.63 dry	3.60 dry	3.58	3.60 dry	3.5 dry										
	Pond level																					
Reclaim Dam																						
1	RDW-1C	9.72	9.73	9.71	9.68	9.68	9.46 dry	9.45	9.64	9.42	9.45	9.38										
2	RDW-1B	12.58	12.74	12.32	12.01	11.85	11.83	11.9	13	12.98	13.02	13.01										
3	RDW-1A	12.47	12.6	12	11.93	11.76	11.91	12.04	12.98	13.01	13.1	13.17										
4	RDW-2C	12.46 Dry	dry	dry	12.31	12.3	12.46 dry	11.98	12	11.92	11.99	11.9										
5	RDW-2B	13.38	12.55	12.67	13.19	13.08	12.79	12.78	13.1	13.22	13.35	13.59										
6	RDW-2A	14.97	13.55	13.72	14.57	14.54	14.61	14.62	14.6	14.77	14.89	15.71										
7	RDW-4B		8.23	8.27	8.35	8.44 dry	8.39 dry	8.40 dry	8.44 dry	8.46 dry	8.50 dry	8.51 dry										
8	RDW-4A	8.77	8.8	8.1	7.9	8.46	8.4	8.48	8.48 dry	8.46 dry	8.41 dry	9.32										
9	TH-18-91	12.27	12.4	12.22	11.78	11.64	11.77	11.64	12.62	12.71	12.7	12.82										
10	TH-21-91	3.6	3.2	3.1	2.7	2.64	2.72	2.77	3.4	3.46	3.45	3.52										
11	RDW-3A	1.72	1	0.93	0.85	0.74	0.81	0.87	1.48	1.58	1.6	1.56										
12	RDW-3B		1.43	1.4	1.34	1.28	1.33	1.38	1.78	1.86	1.77	2										
13	GW-1B	1.92	2.94	2.87	2.84	2.95	2.95 dry	2.93	2.94	2.96	2.95	2.90										
	Pond level	1078.84	1078.79	1078.82	1079.15	1079.09	1079.06	1079	1077.15	1077.22	1077.35	1077.48										
South Dam																						
1	SDW-1A	5.87	6.1	5.98	5.24	6.50 dry	5.56	6.50 dry	5.57 dry	5.67 dry	5.82 dry	5.92										
2	SDW-1B	3.64 dry	3.65	3.63	3.6	3.58 dry	3.57 dry	3.28 dry	3.33 dry	3.43 dry	3.72 dry	3.62										
3	SDW-2A	8.27	8.86	8.79	7.43	7.17	7.23	7.38	7.3	7.67	7.73	8.16										
4	SDW-2B	8.16	8.29	8.1	7.48	7.19	7.16	7.35	7.32	7.71	7.79	8.16										
5	SDW-3A	11.1	11.47	11.33	10.62	10.47	10.5	10.5	10.48	10.58	10.57	blocked										
6	SDW-3B	10.71	11.1	11.12	10.16	10.24	10.32	10.25	10.3	10.61	10.51	10.66										
7	SDW-5A	6.59	7.1	6.93	5.23	5.25	5.32	5.24	5.28	blocked	5.33	blocked										
8	SDW-5B	7.75	7.78	7.12	5.69	6.95	7.04	6.97	7	7.21	7.31	blocked										
9	SDW-4A	na	na	na	1.19	1.35	NA	NA	NA	NA	NA	NA										
10	SDW-4B	na	na	na	2.68	2.61	2.33	na	2.31	2.3	NA	NA										
11	SDW-4C	na	na	na	2.35	2.27	2.9	2.05	4.25	NA	NA	NA										
	Pond level	1092.57	1092.557	1092.559	1093.72	1093.71	1093.37	1093.65	1093.56	1093.58	NA	1093.61										
Data for Feb / Mar is missing. Changed caretakers during this period and something got missed.																						