



**Sä Dena Hes Mine  
2007 Annual Report  
Yukon Production Licence QML - 0004**



Prepared by  
Bruce Donald  
March 2008

# TABLE OF CONTENTS

<b>Section</b>	<b>Page</b>
1.0 Summary .....	1
2.0 Production Data.....	1
2.1 Ore & Waste Mined .....	1
2.2 Head Grades Processed .....	1
2.3 Concentrate Production .....	1
2.4 Stockpiles .....	1
3.0 Forecast Mine Life .....	1
4.0 Backfill Placed Underground.....	2
5.0 Mine Plans.....	2
6.0 Reclamation.....	2
6.1 Reclamation Plan.....	2
6.2 Revegetation Studies.....	2
7.0 Solid Waste Disposal.....	3
7.1 Solid Waste Disposal & Recycling.....	3
7.2 Inventory of Wastes Placed in the Landfill.....	3
7.2 Hydrocarbon Contaminated Soils .....	3
8.0 Wildlife Observations .....	3
9.0 Production Plans For 2007.....	3

## Appendices

Appendix A - Memorandum Regarding Sä Dena Hes Resources December 31, 2007

Appendix B - Results Summary of Phase II Revegetation Test Program - 2007

Appendix C - Listing of 2007 Wildlife Sightings at the Mine Site

## **1.0 SUMMARY**

A Joint Venture consisting of Teck Cominco Limited (25%), Teck Cominco Metals Ltd. (25%), and Pan-Pacific Metal Mining Corporation (50%) (a wholly owned subsidiary of Korea Zinc) formed the Sä Dena Hes Operating Corporation which purchased the Sä Dena Hes Mine from Coopers and Lybrand Ltd. the appointed Court Receiver, in March 1994. Teck Cominco Ltd. operates the mine under an Agreement with the Joint Venture Partners. Full-time security and property management is provided by Teck Cominco Ltd. through on-site personnel. The mine operation continued to be maintained on a 'Temporary Closure' basis throughout 2007. In 2001 Sä Dena Hes was granted a Yukon Quartz Mining Production Licence QML-0004 ('Production Licence'). This report is submitted in compliance with Section 13 of the Production Licence.

## **2.0 PRODUCTION DATA**

The mine was under 'Temporary Closure' status throughout 2007.

### **2.1 Ore & Waste Mined**

Ore Produced .....	0 tonnes
Waste Produced .....	0 tonnes

### **2.2 Head Grades Processed**

Zinc Grade .....	N. A.
Lead Grade.....	N. A.

### **2.3 Concentrate Production**

Zinc Concentrate .....	0 tonnes
Lead Concentrate .....	0 tonnes

### **2.4 Stockpiles**

Ore Stockpiles .....	0 tonnes
----------------------	----------

## **3.0 FORECAST MINE LIFE**

Expected mine life is approximately 4 years based on current resources. The Mineral Resources have not been updated recently and are as follows (Appendix A – Memorandum from Paul Bankes, Director Reserve Evaluations to Bruce Donald, Re: Sä Dena Hes Resources March 6, 2008):

### **Mineral Resources**

Indicated .....	2,190,000 tonnes
Zinc .....	10.4%
Lead .....	2.6%

#### **4.0 BACKFILL PLACED UNDERGROUND**

There was no backfill placed underground during 2007.

#### **5.0 MINE PLANS**

Mine plans and sections were submitted with the Production Licence 2001 Annual Report. They are not being resubmitted as there have been no changes since.

#### **6.0 RECLAMATION**

The site was in Temporary Closure throughout the year awaiting return of economic metal prices. Site reclamation activities were related to study activity.

##### **6.1 Reclamation Plan**

In January 2006 an updated Mine Reclamation Plan was submitted as required. As part of the plan review by Teck Cominco, reclamation costs were increased primarily due to inflation. Discussions regarding the appropriate mechanism to revise the reclamation security are progressing slowly due to the overlap of security requirements with the Water Licence.

However, Teck Cominco has come to the conclusion that the logical solution is to obtain revisions to the terms in both the Production Licence and the Water Licence to accomplish this.

##### **6.2 Revegetation Studies**

The Reclamation Plan proposed Revegetation studies in Section 3.6 of the report. The Production Licence requires that the testing proposed in Section 3.6 and 3.6.2.1 be conducted.

In 2000, the initial work related to Revegetation was initiated to obtain basic information for use in designing the revegetation test work. On an annual basis since then, follow up work has occurred and has been reported. In 2007, Access Consulting continued with progress monitoring and results from this program are included in Appendix B.

#### **7.0 SOLID WASTE DISPOSAL**

##### **7.1 Solid Waste Disposal & Recycling**

The site is in Temporary Closure with one person living on-site. All putrescible waste has been stored in animal proof containers prior to disposal. The site generates waste oil from onsite power generation and mobile equipment. During Temporary Closure the

quantity of used oil generated is limited. The oil is held in storage containers on site pending proper disposal and/or recycling offsite.

### **7.2 Inventory of Wastes Placed in the Landfill**

There were no wastes placed into the landfill in 2007. Putrescible wastes from the caretaker were taken to the local municipal landfill on a regular basis.

### **7.3 Hydrocarbon Contaminated Soils**

There are several areas near the mill site where spills of hydrocarbons either during mine operations or from subsequent storage of hydrocarbons have contaminated soils. In 2006, soil analysis indicated that the soils are "Special Waste" which has complicated planning for clean up. Further sampling was conducted in other service shop areas that have identified additional areas of hydrocarbon contamination. As a result, plans to begin remediation have been delayed until 2008.

## **8.0 WILDLIFE OBSERVATIONS**

The Production Licence requires that sightings of wildlife at the mine site are reported on an annual basis. The caretaker who resides at the site records wildlife sightings in a log book retained at the site and a summary of this information has been compiled and is attached in Appendix C.

## **9.0 PRODUCTION PLANS FOR 2008**

At year end there were no production plans announced for 2008.

-----  
Bruce J. Donald, P. Eng. (B.C.)  
Reclamation Manager,  
Environment and Corporate Affairs  
Teck Cominco Limited

## **APPENDIX A**

# **MEMORANDUM REGARDING SÄ DENA HES RESOURCES – DECEMBER 31<sup>ST</sup>, 2007**

## MEMORANDUM

**Memo To:** Bruce Donald

**Date:** March 6, 2008

**From:** Paul Bankes, Director Reserve Evaluations

**Re:** Sa Dena Hes Resources – December 31, 2007

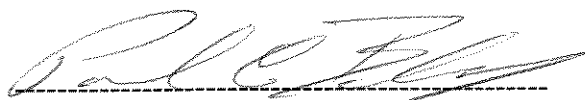
---

Sa Dena Hes

### Indicated Historic Resources

Ore Body	Tonnes	% Zn	% Pb	g/t Ag
Burnick	1,170,000	10.4	0.6	40
Jewel Box	630,000	9.9	5.9	45
Attila	390,000	11.5	3.1	60
<b>Total</b>	<b>2,190,000</b>	<b>10.4</b>	<b>2.6</b>	<b>45</b>

This property was acquired from Curragh Inc. in 1994. Historic resources are contained in three ore zones Attila, Burnick and Jewel Box. Curragh had operated the mine until 1992 and prior to closure had mined 726,758 tonnes grading 11.7% Zn, 7.2% Pb from the Jewel Box ore body. Historic Reserve estimates, prepared prior to the adoption of NI – 43-101, are based on an 8% Pb plus Zn cut-off. Attila resource was calculated by Curragh in 1992 and confirmed by Cominco in 1995. The Burnick resource was calculated by Cominco in November 1995 following the completion of 5900 metres of drilling and development of a preliminary mine plan. The jewel Box resources were recalculated by Cominco in 2001.



Paul C. Bankes, P. Geo  
Director Reserve Evaluations  
Teck Cominco Limited.

## **APPENDIX B**

# **RESULTS SUMMARY OF PHASE II REVEGETATION TEST PROGRAM - 2007**



---

**SÄ DENA HES MINE  
LAND RECLAMATION AND REVEGETATION PLAN**

***RESULTS SUMMARY OF  
Phase II Revegetation Test Program - 2007***

---

**Prepared for:**

**Teck Cominco Ltd.**  
#600-200 Burrard Street  
Vancouver, B.C.  
V6C 3L9

March 2008

**Prepared by:**



A Registered Tradename for Access Mining Consultants Ltd.  
[www.accessconsulting.ca](http://www.accessconsulting.ca)

## Table of Contents

1.0	Introduction .....	1
1.1	Background .....	1
2.0	Phase II program.....	2
2.1	2001 Program.....	2
2.2	2002 Program.....	3
2.3	2003 Program.....	3
2.4	2004 Program.....	3
2.5	2005 Program.....	4
2.6	2006 Program.....	4
2.7	2007 Program.....	4
3.0	2007 Project Methods .....	9
3.1	Seed Test Plot Monitoring .....	9
3.2	Shrub Test Plot Monitoring .....	9
3.3	Vegetation and Soil Sampling for Metal Concentrations .....	9
3.4	Seed Collection .....	10
4.0	2007 Monitoring Results .....	11
4.1	Observations of Seed Test Plots Established in 2001.....	11
4.2	Observations of Seed Test Plots Established in 2005.....	25
4.3	Seed Test Plot Conclusions .....	26
4.4	Shrub Test Plot Observations.....	28
4.5	Plant Tissue and Soils Metals Analysis .....	28
5.0	References.....	31

## List of Figures

Figure 1	General Project Location Map.....	6
Figure 2	Test Plot Locations – Mine Access Road.....	7
Figure 3	Test Plot Locations – Mine Site / Tailings Area .....	8

## List of Appendices

Appendix A	2007 Laboratory Results of Plant Tissue Metal Analysis
Appendix B	2007 Site Visit Photos

## 1.0 INTRODUCTION

### 1.1 BACKGROUND

In February 2000, Cominco submitted a Detailed Decommissioning & Reclamation Plan (the “DDRP”) for the Sä Dena Hes Mine to the Yukon Territory Water Board. As part of the DDRP, a land reclamation and revegetation plan and test program was proposed with the overall goal of preparing the site for eventual closure. Revegetation efforts would assist in returning the site to a state that existed prior to mining activities.

Figure 1 shows the general location of the mine in the Yukon.

The primary objectives of the revegetation test program are to:

- Determine seed mixtures that will provide short-term soil stability while allowing the natural invasion of local plant species;
- Determine fertilizer applications optimal for sustaining the healthy growth of seeded species without inhibiting colonization by indigenous plant species;
- Investigate methods of encouraging natural plant succession on reclaimed surfaces;
- Determine the potential success rates of revegetation at test plots on different areas of the mine site, in particular the tailings management facility: and
- Determine the metal uptake potential of vegetation at the mine site (seeded and naturally occurring species).

The revegetation and reclamation program for the site is being undertaken in phases, with the results of the initial program used to further define subsequent phases. The DDRP outlined a program of additional data collection and test work in order to support the overall revegetation and reclamation components of the DDRP. The program included:

**Phase I:**

- Completing an inventory of soils around the site necessary to provide revegetative soil covers for various mine site components;
- Testing the available nutrients in soils; and
- Establishing initial shrub propagation trials.

**Phase II:**

- Establishing test plots at various mine site locations in order to determine the optimum applications of seed and fertilizer: and
- Determining the metal uptake of the seeded plants.

The Phase I program, conducted in 2000, completed some of the tasks identified above, specifically, the soils inventory and nutrient testing. Test plots for shrub propagation trials were also established at two locations on the property. Recommendations resulting from the Phase I program detailed further efforts that would be required to successfully implement the DDRP and to complete the remaining revegetation test program tasks listed above. Results from the Phase I program are presented in a report prepared by Access Mining Consultants in 2001 (AMCL 2001).

## **2.0 PHASE II PROGRAM**

### **2.1 2001 PROGRAM**

The Phase II program was initiated in the fall of 2001. The goal of the Phase II program was to implement the reclamation and revegetation activities identified in the DDRP. As mentioned in Section 1.0, the objectives were to:

- Establish test plots various mine site locations in order to determine the optimum applications of seed and fertilizer: and
- Determine the metal uptake of the seeded plants.

Access Consulting Group prepared a report in early 2002 describing the methods and results of the work conducted in 2001 (AMCL 2002). The report included a description of the seed test plots established in the fall of 2001 and the monitoring results of the shrub test plots established in 2000. The metal uptake analysis was not initiated until 2003.

Figures 2 and 3 show the seed test plot locations.

## **2.2 2002 PROGRAM**

The specific objectives for the 2002 season were to:

- Examine the test plots for vegetative growth;
- Assess the application rates of seed and fertilizer;
- Provide recommendations for future action.

A report prepared by Access Consulting Group in early 2003 (AMCL 2003) describes the methods and results of the 2002 monitoring program and recommends action for the 2003 season.

## **2.3 2003 PROGRAM**

The specific objectives for the 2003 season were to:

- Examine the test plots for vegetative growth;
- Assess the application rates of seed and fertilizer and reapply seed and fertilizer as deemed appropriate;
- Provide recommendations for future action.

A report prepared by Access Consulting Group in March 2004 (AMCL 2004) describes the methods and results of the 2003 monitoring program and recommends action for the 2004 season.

## **2.4 2004 PROGRAM**

The specific objectives for the 2004 season were to:

- Examine the test plots for vegetative growth;
- Analyze seeded vegetation for the uptake of metals;
- Evaluate the results of the Phase II Program over the period from 2001 to 2004 and develop conclusions regarding the relative successes of the various revegetation treatments;
- Provide recommendations for future action.

A report prepared by Access Consulting Group in January 2005 (AMCL 2005) describes the methods and results of the 2004 monitoring program and recommends action for the 2005 season.

### **2.5 2005 PROGRAM**

The specific objectives for the 2005 season were to:

- Examine the test plots for vegetative growth;
- Analyze seeded vegetation for the uptake of metals;
- Evaluate the results of the Phase II Program over the period from 2001 to 2005 and develop conclusions regarding the relative successes of the various revegetation protocols;
- Establish new test plots at the mine site in order to determine which seeding season (spring or fall) results in the higher rate of seed germination;
- Provide recommendations for future action.

A report prepared by Access Consulting Group in January 2006 (AMCL 2006) describes the methods and results of the 2005 monitoring program and recommends action for the 2006 season.

### **2.6 2006 PROGRAM**

The specific objectives for the 2006 season were to:

- Examine the original test plots for vegetative growth;
- Examine the test plots established in 2005 in order to determine which seeding season (spring or fall) results in the higher rate of seed germination,
- Analyze seeded vegetation for the uptake of metals;
- Evaluate the results of the Phase II Program over the period from 2001 to 2006 and develop conclusions regarding the relative successes of the various revegetation protocols;
- Provide recommendations for future action.

A report prepared by Access Consulting Group in January 2007 (AMCL 2007) describes the methods and results of the 2006 monitoring program and recommends action for the 2007 season.

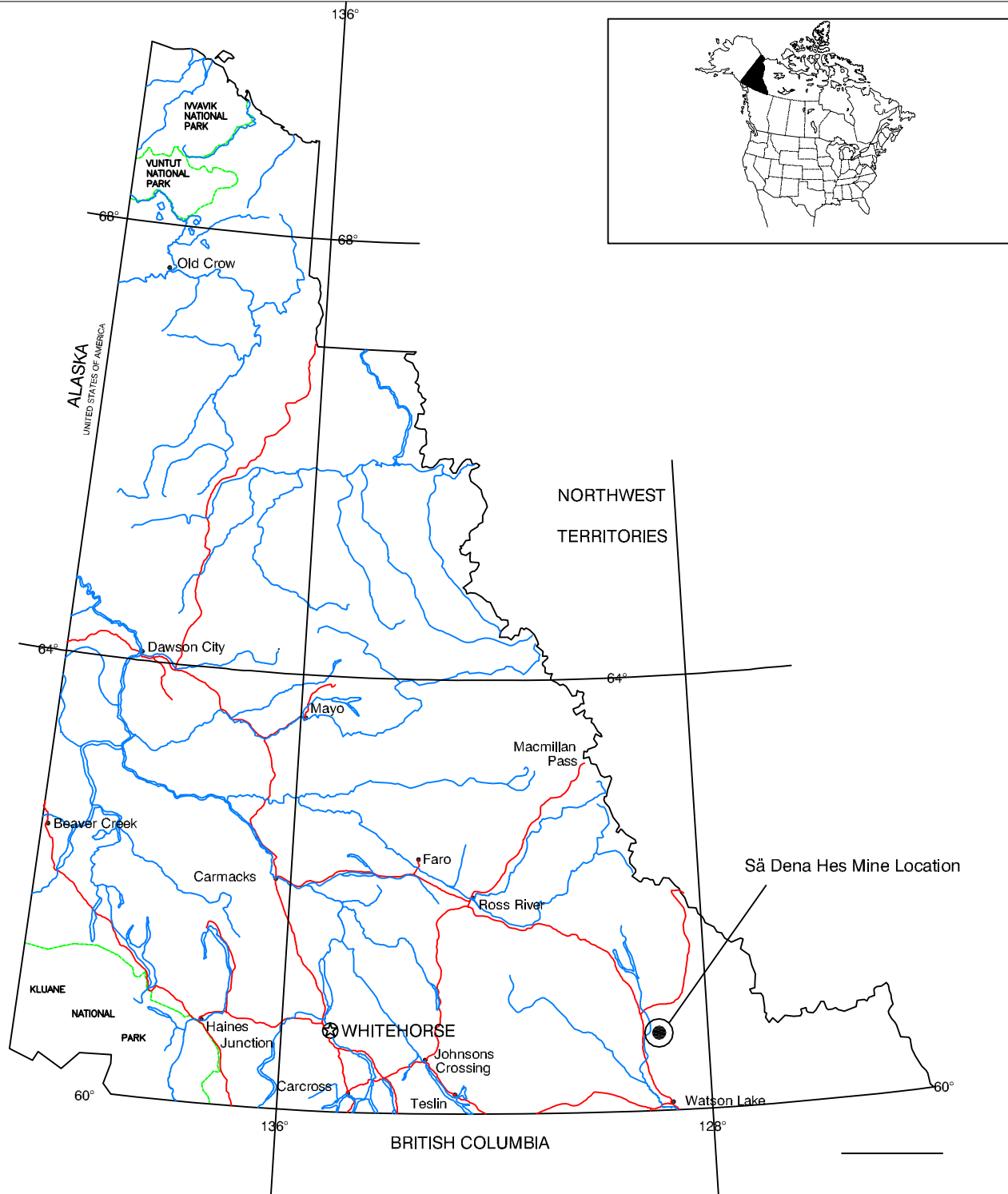
### **2.7 2007 PROGRAM**

The specific objectives for the 2007 season were to:

- Examine the original test plots for vegetative growth;
- Examine the test plots established in 2005 in order to determine which seeding season (spring or fall) results in the higher rate of seed germination,
- Analyze seeded vegetation for the uptake of metals;
- Evaluate the results of the Phase II Program over the period from 2001 to 2007 and develop conclusions regarding the relative successes of the various revegetation protocols;
- Assess the potential of locally occurring shrub species for revegetation on the TMF.
- Provide recommendations for future action.

The following sections provide a description of the 2007 project methods and a summary of the results.

# Yukon Territory



Lambert Conformal Conic Projection  
with Standard Parallels at 49°N and 77°N

- *Populated Settlements*
- ⊙ *Territorial Capital*

Teck Cominco Ltd. Sā Dena Hes Mine  
Land Reclamation & Revegetation Plan:  
2007 Revegetation Test Program

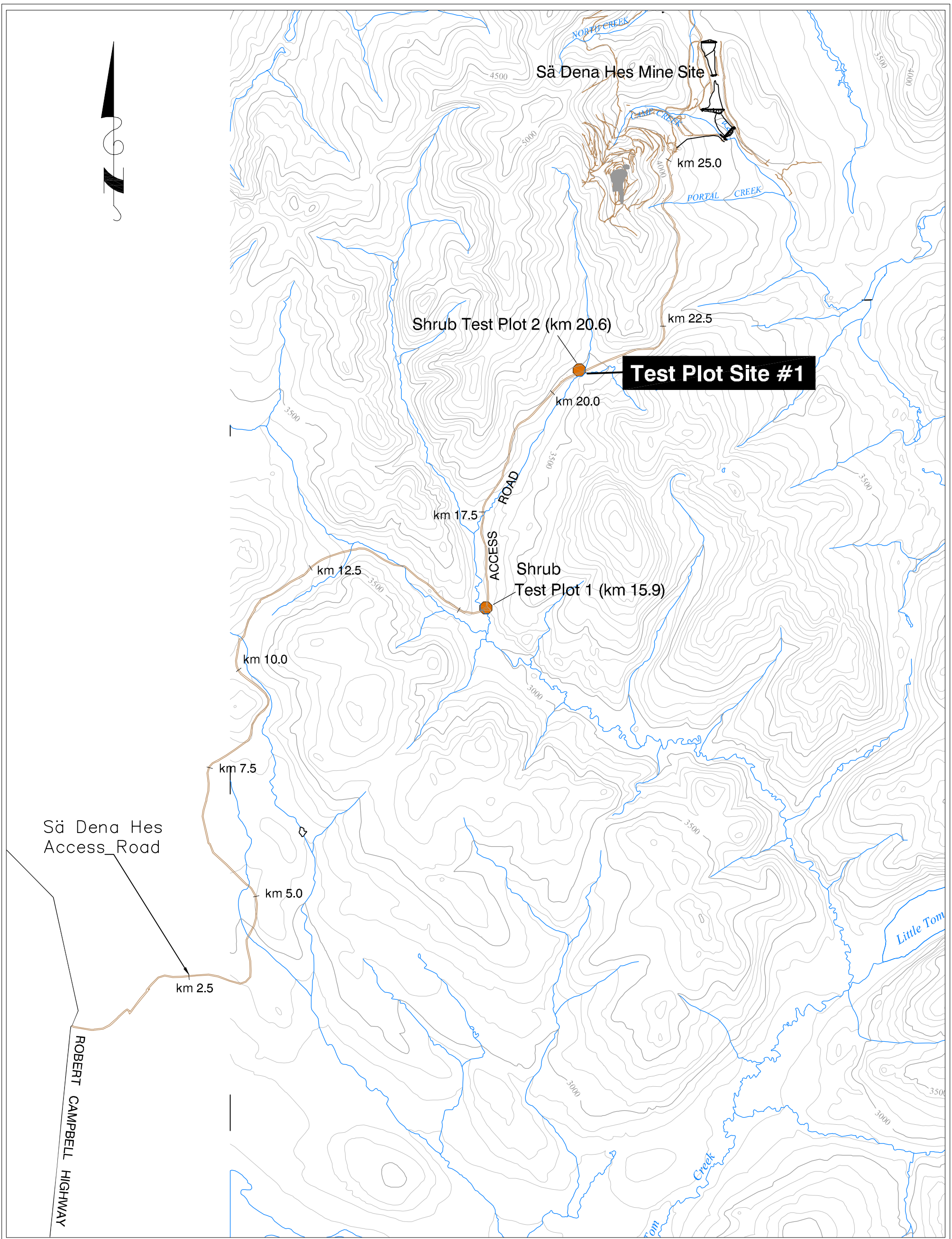
General Location Map (Map of Yukon)

**teckcominco**

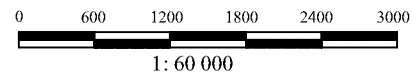


DRAWN BY: JEA	MODIFIED BY: HD	CHECKED BY: SK
DATE: 10/17/2000	DATE: March 2008	SCALE 1:6 000 000

**Figure 1**






CONTOUR INTERVAL 100 FEET



NOTE  
BASE TOPOGRAPHY FROM NORTH AMERICAN DATUM 1983  
ALL SURFACE FACILITIES AND BOUNDARIES HAVE BEEN  
ADJUSTED FROM NAD 1927



**Legend:**

-  Access Road
-  Watercourse
-  Test plot area

**Teck Cominco Ltd. Sä Dena Hes Mine  
Land Reclamation & Revegetation Plan:  
2007 Revegetation Test Program**

**Figure 2: Test Plot Locations - Mine Access Road**

Drawn By: JEA	Revised By: HD	Checked By: SK
Date: 10/17/2000	Date: March 2008	







File: D:\Project\AIP\Projects\Cominco\dwg\Reveg\Revised\March08\Fig2\_TestPlotLoc\_road.dwg

Teck Cominco Ltd.  
 Sä Dena Hes Mine  
 Land Reclamation &  
 Revegetation Plan:  
 2007 Revegetation Test  
 Program



Legend:

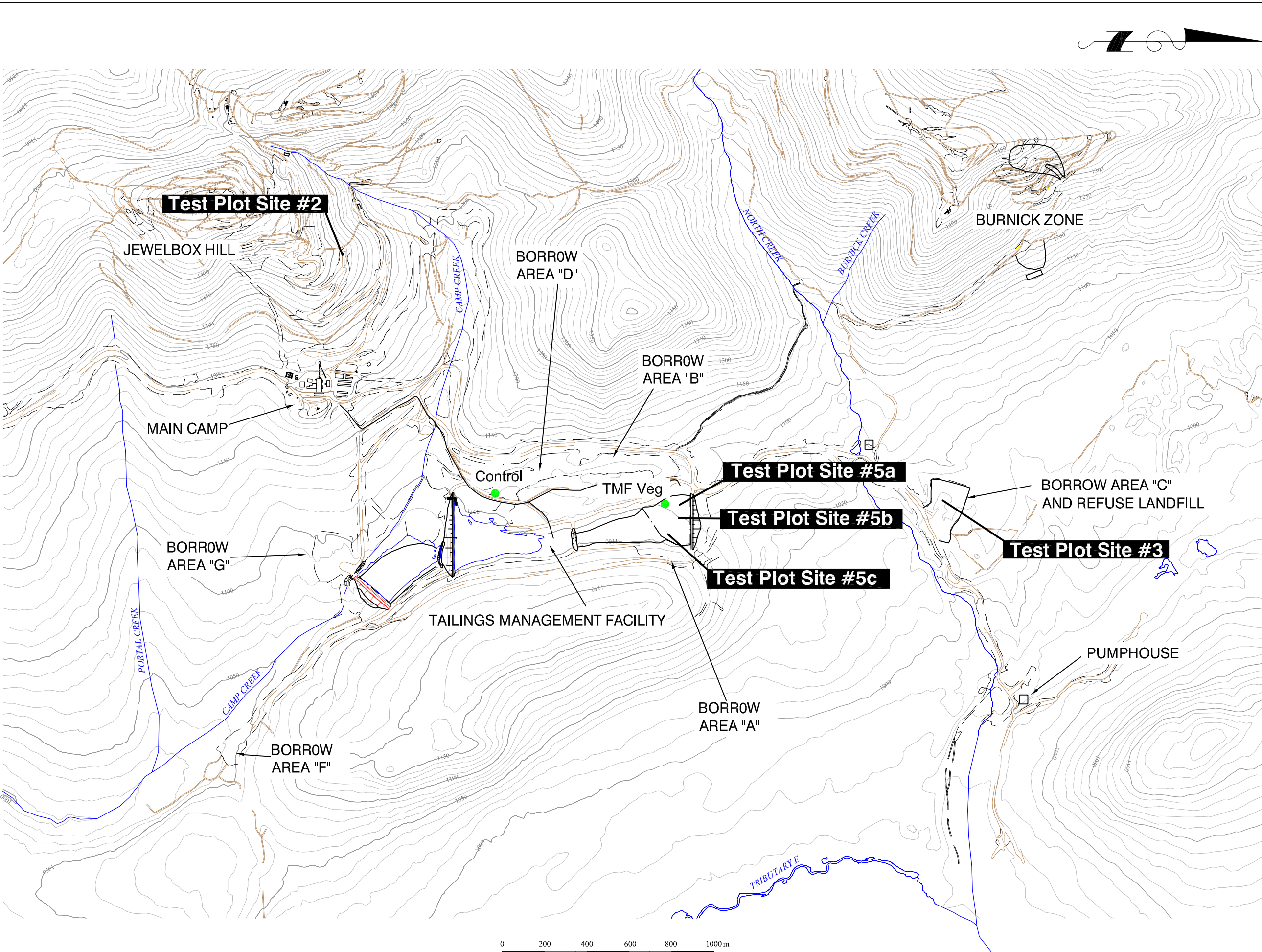
-  Watercourse
-  Road within cleared area
-  Topography
-  Vegetation/Soil Sample Location

CONTOUR INTERVAL=10m

NOTE  
 BASE TOPOGRAPHY FROM NORTH AMERICAN DATUM 1983  
 ALL SURFACE FACILITIES AND BOUNDARIES HAVE BEEN  
 ADJUSTED FROM NAD 1927

**Figure 3:  
 Test Plot Locations - Mine Site /  
 Tailings Area**

Drawn By: JEA	Date: 10/17/2000
Revised By: HD	Date: March 2008
Checked By: SK	



### **3.0 2007 PROJECT METHODS**

#### **3.1 SEED TEST PLOT MONITORING**

The revegetation test plots were surveyed on September 17, 2007. At the time of the survey, the ground was still unfrozen and with no snow cover. At each site, the total vegetative cover was estimated and an assessment of the success of each seeded species was made. The results are presented in Section 4.1.

#### **3.2 SHRUB TEST PLOT MONITORING**

The two shrub test plots established in the fall of 2000 were surveyed. The number of surviving willow species was counted. The results are shown in Section 4.2.

#### **3.3 VEGETATION AND SOIL SAMPLING FOR METAL CONCENTRATIONS**

Samples of plant tissue were collected from two locations for metal analysis. These included an off-site location (Site 1- km 22 main access road) and an on-site tailings location (Site 5A -TMF with 200 mm soil base). At each site, tissue samples from each species were composited from the four test plots. Approximately 20 grams of each plant species (stem and leaves) were collected. Samples were taken from the following species:

Km 22 Main Access Road	Violet Wheatgrass
	Tufted Hairgrass
	Sheep Fescue
	Alfalfa
TMF with 200 mm Soil	Violet Wheatgrass
	Tufted Wheatgrass
	Ticklegrass
	Rocky Mountain Fescue
	Alfalfa

No samples of Alpine Bluegrass were collected from either site and no samples of Ticklegrass were collected from the Main Access Road site. Although these grasses had been sampled in previous years, there was not enough plant material available for sampling at the time of the 2007 survey.

Soil samples were also collected from each of the four test plots at the two sites.

Samples of leaves and the current year's stem growth were collected from willows and balsam poplar at two sites:

- TMF Site; and
- Control Site north of TMF.

Soil samples were also collected at these sites, see Figure 3 for the locations of these vegetation/soil sample locations.

Vegetation and soil samples were collected with latex gloves and stored in Ziploc bags. Vegetation samples were washed with de-ionized water at the collection site. All samples were shipped to Norwest Labs in Surrey, BC for metals analysis. The analysis results are discussed in Section 4.3.

### ***3.4 SEED COLLECTION***

Alder cones (with seeds) were collected in the vicinity of the Control Site (see above) and stored for drying in a paper bag. The alder seeds will be applied to a test plot on the TMF in the spring of 2008.

## 4.0 2007 MONITORING RESULTS

Following are the results of the 2007 monitoring program.

### 4.1 OBSERVATIONS OF SEED TEST PLOTS ESTABLISHED IN 2001

The 2007 observations of the revegetation test plots (seeded in 2001 and reseeded in 2003) are summarized in the following tables. For the applied seed mixes and fertilizer formulations, see 2001 and 2003 Summary Reports (AMCL 2002 and 2004).

**Table 1 Km 22 Main Access Road (Site 1)**

Plot #1	Plot #2	Plot # 3	Plot # 4
2001: 24 kg/ha seed & 120 kg/ha fertilizer  2003: 25 kg/ha seed & 120 kg/ha fertilizer	2001: 24 kg/ha seed & 60 kg/ha fertilizer  2003: 50 kg/ha seed & 180 kg/ha fertilizer	2001: 12 kg/ha seed & 60 kg/ha fertilizer  2003: 75 kg/ha seed & 240 kg/ha fertilizer	Control (no seed or fertilizer)
Estimated total cover 20%	Estimated total cover 30%	Estimated total cover 40%	Estimated total cover 15%
Violet Wheatgrass <ul style="list-style-type: none"> <li>● moderate distribution over plot</li> <li>● approximately 25 cm high</li> <li>● all plants in seed</li> </ul>	Violet Wheatgrass <ul style="list-style-type: none"> <li>● light distribution over plot</li> <li>● approximately 25 cm high</li> <li>● all plants in seed</li> </ul>	Violet Wheatgrass <ul style="list-style-type: none"> <li>● sparse distribution over plot</li> <li>● approximately 25 cm high</li> <li>● most plants in seed</li> </ul>	
Tufted Hairgrass <ul style="list-style-type: none"> <li>● no evidence of Tufted Hairgrass on plot</li> </ul>	Tufted Hairgrass <ul style="list-style-type: none"> <li>● moderate distribution over plot</li> <li>● approximately 60 cm high</li> <li>● all plants in seed</li> </ul>	Tufted Hairgrass <ul style="list-style-type: none"> <li>● no evidence no evidence of Tufted Hairgrass on plot</li> </ul>	
Ticklegrass <ul style="list-style-type: none"> <li>● no evidence of Ticklegrass on plot</li> </ul>	Ticklegrass <ul style="list-style-type: none"> <li>● no evidence of Ticklegrass on plot</li> </ul>	Ticklegrass <ul style="list-style-type: none"> <li>● no evidence of Ticklegrass on plot</li> </ul>	
Sheep Fescue <ul style="list-style-type: none"> <li>● sparse distribution over plot</li> <li>● approximately 20 cm high</li> <li>● all plants in seed</li> </ul>	Sheep Fescue <ul style="list-style-type: none"> <li>● sparse distribution over plot</li> <li>● approximately 20 cm high</li> <li>● all plants in seed</li> </ul>	Sheep Fescue <ul style="list-style-type: none"> <li>● sparse distribution over plot</li> <li>● approximately 15 cm high</li> <li>● all plants in seed</li> </ul>	

<p>Alpine Bluegrass</p> <ul style="list-style-type: none"> <li>● sparse distribution over plot</li> <li>● approximately 20 cm high</li> <li>● few plants in seed</li> </ul>	<p>Alpine Bluegrass</p> <ul style="list-style-type: none"> <li>● sparse distribution over plot</li> <li>● approximately 20 cm high</li> <li>● few plants in seed</li> </ul>	<p>Alpine Bluegrass</p> <ul style="list-style-type: none"> <li>● moderate distribution over plot</li> <li>● approximately 15 cm high</li> <li>● few plants in seed</li> </ul>	
<p>Alfalfa</p> <ul style="list-style-type: none"> <li>● moderate distribution over plot</li> <li>● approximately 30 cm high</li> <li>● some plants in flower</li> </ul>	<p>Alfalfa</p> <ul style="list-style-type: none"> <li>● moderate distribution over plot</li> <li>● approximately 30 cm high</li> <li>● a few plants in flower</li> </ul>	<p>Alfalfa</p> <ul style="list-style-type: none"> <li>● moderate but patchy distribution over plot</li> <li>● approximately 30 cm high</li> <li>● a few plants in flower</li> </ul>	
<p>Comments</p> <ul style="list-style-type: none"> <li>● moderate amount of litter from previous years' growth</li> <li>● several small Bear Root plants observed (similar in number and size to those observed in 2006)</li> </ul>	<p>Comments</p> <ul style="list-style-type: none"> <li>● moderate amount of litter from previous years' growth</li> <li>● several small Bear Root plants observed (first evidence since seeded in 2001)</li> </ul>	<p>Comments</p> <ul style="list-style-type: none"> <li>● moderate amount of litter from previous years' growth</li> <li>● no evidence of legumes seeded in 2001</li> </ul>	
<p>Volunteer species on and between test plots include White Spruce (<i>Picea glauca</i>), Willows (<i>Salix</i> spp.), Balsam Poplar (<i>Populus balsamifera</i>), Arctic Lupine (<i>Lupinus arcticus</i>) and Timothy (<i>Phleum pratense</i>).</p>			<p>Volunteer species on control plot include White Spruce (<i>Picea glauca</i>), Trembling Aspen (<i>Populus tremuloides</i>), Balsam Poplar (<i>Populus balsamifera</i>), Willows (<i>Salix</i> spp.), Soapberry (<i>Shepherdia canadensis</i>), Fleabane (<i>Erigeron</i> sp.), Fireweed (<i>Epilobium angustifolium</i>), Trisetum (<i>Trisetum spicatum</i>) and Wood Rush (<i>Luzula parviflora</i>).</p>

**Table 2 Jewel Box Haul Road (Site 2)**

<b>Plot #1</b>	<b>Plot #2</b>	<b>Plot # 3</b>	<b>Plot # 4</b>
2001: 26 kg/ha seed & 120 kg/ha fertilizer  2003: 25 kg/ha seed & 120 kg/ha fertilizer	2001: 26 kg/ha seed & 60 kg/ha fertilizer  2003: 50 kg/ha seed & 180 kg/ha fertilizer	2001: 13 kg/ha seed & 60 kg/ha fertilizer  2003: 75 kg/ha seed & 240 kg/ha fertilizer	Control (no seed or fertilizer)
Estimated total cover 10%	Estimated total cover 50%	Estimated total cover 70%	Estimated total cover 15%
<p>Violet Wheatgrass</p> <ul style="list-style-type: none"> <li>● light distribution over plot</li> <li>● approximately 25 cm high</li> <li>● all plants in seed</li> </ul>	<p>Violet Wheatgrass</p> <ul style="list-style-type: none"> <li>● sparse distribution over plot with thick patches</li> <li>● approximately 25 cm high</li> <li>● all plants in seed</li> </ul>	<p>Violet Wheatgrass</p> <ul style="list-style-type: none"> <li>● moderate cover on one side of plot with little on the other</li> <li>● approximately 25 cm high</li> <li>● most plants in seed</li> </ul>	
<p>Tufted Hairgrass</p> <ul style="list-style-type: none"> <li>● sparse distribution over plot</li> <li>● approximately 60 cm high</li> <li>● all plants in seed</li> </ul>	<p>Tufted Hairgrass</p> <ul style="list-style-type: none"> <li>● sparse distribution over plot</li> <li>● approximately 60 cm high</li> <li>● all plants in seed</li> </ul>	<p>Tufted Hairgrass</p> <ul style="list-style-type: none"> <li>● moderate distribution over plot</li> <li>● approximately 60 cm high</li> <li>● all plants in seed</li> </ul>	
<p>Ticklegrass</p> <ul style="list-style-type: none"> <li>● very sparse distribution over plot (heaviest along plot edges)</li> <li>● approximately 15 cm high</li> <li>● most plants in seed</li> </ul>	<p>Ticklegrass</p> <ul style="list-style-type: none"> <li>● very sparse distribution over plot</li> <li>● approximately 15 cm high</li> <li>● most plants in seed</li> </ul>	<p>Ticklegrass</p> <ul style="list-style-type: none"> <li>● very sparse distribution over plot (mostly on plot edges)</li> <li>● approximately 15 cm high</li> <li>● most plants in seed</li> </ul>	
<p>Sheep Fescue</p> <ul style="list-style-type: none"> <li>● no evidence of Sheep Fescue on plot</li> </ul>	<p>Sheep Fescue</p> <ul style="list-style-type: none"> <li>● no evidence of Sheep Fescue on plot</li> </ul>	<p>Sheep Fescue</p> <ul style="list-style-type: none"> <li>● no evidence of Sheep Fescue on plot</li> </ul>	
<p>Alpine Bluegrass</p> <ul style="list-style-type: none"> <li>● moderate distribution over plot</li> <li>● approximately 20 cm high</li> <li>● most plants in seed</li> </ul>	<p>Alpine Bluegrass</p> <ul style="list-style-type: none"> <li>● moderate distribution over plot</li> <li>● approximately 20 cm high</li> <li>● most plants in seed</li> </ul>	<p>Alpine Bluegrass</p> <ul style="list-style-type: none"> <li>● good distribution over plot</li> <li>● approximately 20 cm high</li> <li>● most plants in seed</li> </ul>	

Results Summary of Sä Dena Hes Mine Phase II Revegetation Test Program – 2007

<p>Alfalfa</p> <ul style="list-style-type: none"> <li>● sparse distribution over plot</li> <li>● approximately 30 cm high</li> <li>● some plants in flower</li> </ul>	<p>Alfalfa</p> <ul style="list-style-type: none"> <li>● good but patchy distribution over plot</li> <li>● approximately 30 cm high</li> <li>● some plants in flower</li> </ul>	<p>Alfalfa</p> <ul style="list-style-type: none"> <li>● good distribution over plot</li> <li>● approximately 30 cm high</li> <li>● most plants in flower</li> </ul>	
<p>Comments</p> <ul style="list-style-type: none"> <li>● moderate amount of litter from previous years' growth</li> <li>● several small Showy Locoweed (<i>Oxytropis splendens</i>). First evidence since seeded in 2001.</li> </ul>	<p>Comments</p> <ul style="list-style-type: none"> <li>● large amount of litter from previous years' growth (mostly Violet Wheatgrass)</li> <li>● several small Bear Root plants observed (similar in number and size to those observed in 2006)</li> <li>● no evidence of other legumes seeded in 2001</li> </ul>	<p>Comments</p> <ul style="list-style-type: none"> <li>● large amount of litter from previous years' growth (mostly Violet Wheatgrass)</li> <li>● several small Bear Root plants observed (similar in number and size to those observed in 2006)</li> <li>● no evidence of other legumes seeded in 2001</li> </ul>	
<p>Volunteer species on and between test plots include Alpine Fir (<i>Abies lasiocarpa</i>), Willows (<i>Salix</i> spp.), Fireweed (<i>Epilobium angustifolium</i>), River Beauty (<i>Epilobium latifolium</i>), Common Dandelion (<i>Taraxacum officinale</i>), Trisetum (<i>Trisetum spicatum</i>), Timothy (<i>Phleum pratense</i>) Red Fescue (<i>Festuca rubra</i>) and Sedge (<i>Carex</i> sp.).</p>			<p>Volunteer species on control plot include Alpine Fir (<i>Abies lasiocarpa</i>), Willows (<i>Salix</i> spp.), Fireweed (<i>Epilobium angustifolium</i>), River Beauty (<i>Epilobium latifolium</i>), Arctic Lupine (<i>Lupinus arcticus</i>), Bear Root (<i>Hedysarum alpinum</i>), (Fleabane (<i>Erigeron</i> sp.), Trisetum (<i>Trisetum spicatum</i>), Ticklegrass (<i>Agrostis scabra</i>) and Violet Wheatgrass (<i>Elymus violaceum</i>).</p>

**Table 3 Landfill (Site 3)**

<b>Plot #1</b>	<b>Plot #2</b>	<b>Plot # 3</b>	<b>Plot # 4</b>
2001: 26 kg/ha seed & 120 kg/ha fertilizer  2003: 25 kg/ha seed & 120 kg/ha fertilizer	2001: 26 kg/ha seed & 60 kg/ha fertilizer  2003: 50 kg/ha seed & 180 kg/ha fertilizer	2001: 13 kg/ha seed & 60 kg/ha fertilizer  2003: 75 kg/ha seed & 240 kg/ha fertilizer	Control (no seed or fertilizer)
Estimated total cover 50% (not including previous years' litter)	Estimated total cover 60% (not including previous years' litter)	Estimated total cover 80%	Estimated total cover <5%
Violet Wheatgrass <ul style="list-style-type: none"> <li>no evidence of Violet Wheatgrass on plot</li> </ul>	Violet Wheatgrass <ul style="list-style-type: none"> <li>no evidence of Violet Wheatgrass on plot</li> </ul>	Violet Wheatgrass <ul style="list-style-type: none"> <li>light distribution over plot</li> <li>approximately 20 cm high</li> <li>all plants in seed</li> </ul>	
Tufted Hairgrass <ul style="list-style-type: none"> <li>light distribution over plot</li> <li>approximately 60 cm high</li> <li>all plants in seed</li> </ul>	Tufted Hairgrass <ul style="list-style-type: none"> <li>moderate distribution over plot</li> <li>approximately 60 cm high</li> <li>all plants in seed</li> </ul>	Tufted Hairgrass <ul style="list-style-type: none"> <li>moderate distribution over plot</li> <li>approximately 60 cm high</li> <li>all plants in seed</li> </ul>	
Ticklegrass <ul style="list-style-type: none"> <li>no evidence of Ticklegrass on plot</li> </ul>	Ticklegrass <ul style="list-style-type: none"> <li>no evidence of Ticklegrass on plot</li> </ul>	Ticklegrass <ul style="list-style-type: none"> <li>no evidence of Ticklegrass on plot</li> </ul>	
Sheep Fescue <ul style="list-style-type: none"> <li>moderate distribution over plot</li> <li>approximately 20 cm high</li> <li>all plants in seed</li> </ul>	Sheep Fescue <ul style="list-style-type: none"> <li>good distribution over plot</li> <li>approximately 20 cm high</li> <li>all plants in seed</li> </ul>	Sheep Fescue <ul style="list-style-type: none"> <li>good distribution over plot</li> <li>approximately 20 cm high</li> <li>all plants in seed</li> </ul>	
Alpine Bluegrass <ul style="list-style-type: none"> <li>no evidence of Alpine Bluegrass on plot</li> </ul>	Alpine Bluegrass <ul style="list-style-type: none"> <li>no evidence of Alpine Bluegrass on plot</li> </ul>	Alpine Bluegrass <ul style="list-style-type: none"> <li>no evidence of Alpine Bluegrass on plot</li> </ul>	
Alfalfa <ul style="list-style-type: none"> <li>moderate distribution over plot</li> </ul>	Alfalfa <ul style="list-style-type: none"> <li>moderate distribution over plot</li> </ul>	Alfalfa <ul style="list-style-type: none"> <li>good distribution over plot</li> </ul>	

Results Summary of Sä Dena Hes Mine Phase II Revegetation Test Program – 2007

<ul style="list-style-type: none"> <li>● approximately 30 cm high</li> <li>● some plants in flower</li> </ul>	<ul style="list-style-type: none"> <li>● approximately 30 cm high</li> <li>● some plants in flower</li> </ul>	<ul style="list-style-type: none"> <li>● approximately 30 cm high</li> <li>● most plants in flower</li> </ul>	
<p>Comments</p> <ul style="list-style-type: none"> <li>● very large amount of litter from previous years' growth</li> <li>● no evidence of legumes seeded in 2001</li> </ul>	<p>Comments</p> <ul style="list-style-type: none"> <li>● large amount of litter from previous years' growth</li> <li>● one Bear Root plant observed (seeded in 2001)</li> <li>● no evidence of other legumes seeded in 2001</li> </ul>	<p>Comments</p> <ul style="list-style-type: none"> <li>● moderate amount of litter from previous years' growth</li> <li>● no evidence of legumes seeded in 2001</li> </ul>	
<p>Volunteer species on and between test plots include White Spruce (<i>Picea glauca</i>), Alpine Fir (<i>Abies lasiocarpa</i>), Balsam Poplar (<i>Populus balsamifera</i>), Paper Birch (<i>Betula papyrifera</i>), willows (<i>Salix</i> spp.), Prickly Rose (<i>Rosa acicularis</i>), Fireweed (<i>Epilobium angustifolium</i>), Timothy (<i>Phleum pratense</i>) Red Fescue (<i>Festuca rubra</i>), and Foxtail Barley (<i>Hordeum jubatum</i>).</p>			<p>Volunteer species on control plot include White Spruce (<i>Picea glauca</i>), Balsam Poplar (<i>Populus balsamifera</i>) and willows (<i>Salix</i> spp.). Growth on the control plot also includes small amounts of Violet Wheatgrass, Sheep Fescue, Glaucous Bluegrass and Alfalfa. These species are presumably the result of windblown seed from the other plots.</p>

**Table 4 TMF with 200 mm Soil (Site 5A)**

<b>Plot #1</b>	<b>Plot #2</b>	<b>Plot # 3</b>	<b>Plot # 4</b>
2001: 25 kg/ha seed & 120 kg/ha fertilizer  2003: 25 kg/ha seed & 120 kg/ha fertilizer	2001: 25 kg/ha seed & 60 kg/ha fertilizer  2003: 50 kg/ha seed & 180 kg/ha fertilizer	2001: 12 kg/ha seed & 60 kg/ha fertilizer  2003: 75 kg/ha seed & 240 kg/ha fertilizer	Control (no seed or fertilizer)
Estimated total cover 70%	Estimated total cover 90%	Estimated total cover 60%	Estimated total cover <5%
Violet Wheatgrass <ul style="list-style-type: none"> <li>● low distribution over plot</li> <li>● approximately 25 cm high</li> <li>● all plants in seed</li> </ul>	Violet Wheatgrass <ul style="list-style-type: none"> <li>● moderate distribution over plot</li> <li>● approximately 25 cm high</li> <li>● all plants in seed</li> </ul>	Violet Wheatgrass <ul style="list-style-type: none"> <li>● low distribution over plot</li> <li>● approximately 25 cm high</li> <li>● all plants in seed</li> </ul>	
Tufted Hairgrass <ul style="list-style-type: none"> <li>● low distribution over plot</li> <li>● approximately 60 cm high</li> <li>● all plants in seed</li> </ul>	Tufted Hairgrass <ul style="list-style-type: none"> <li>● low distribution over plot</li> <li>● approximately 60 cm high</li> <li>● all plants in seed</li> </ul>	Tufted Hairgrass <ul style="list-style-type: none"> <li>● low distribution over plot</li> <li>● approximately 60 cm high</li> <li>● all plants in seed</li> </ul>	
Ticklegrass <ul style="list-style-type: none"> <li>● sparse distribution over plot (mostly around edges of plot)</li> <li>● approximately 15 cm high</li> <li>● most plants in seed</li> </ul>	Ticklegrass <ul style="list-style-type: none"> <li>● sparse distribution over plot (mostly around edges of plot)</li> <li>● approximately 15 cm high</li> <li>● most plants in seed</li> </ul>	Ticklegrass <ul style="list-style-type: none"> <li>● very sparse distribution over plot (mostly around edges of plot)</li> <li>● approximately 15 cm high</li> <li>● most plants in seed</li> </ul>	
Rocky Mountain Fescue <ul style="list-style-type: none"> <li>● good distribution over plot</li> <li>● approximately 20 cm high</li> <li>● all plants in seed</li> </ul>	Rocky Mountain Fescue <ul style="list-style-type: none"> <li>● good distribution over plot</li> <li>● approximately 20 cm high</li> <li>● all plants in seed</li> </ul>	Rocky Mountain Fescue <ul style="list-style-type: none"> <li>● moderate distribution over plot</li> <li>● approximately 20 cm high</li> <li>● all plants in seed</li> </ul>	
Alpine Bluegrass <ul style="list-style-type: none"> <li>● no evidence of Alpine Bluegrass on plot</li> </ul>	Alpine Bluegrass <ul style="list-style-type: none"> <li>● no evidence of Alpine Bluegrass on plot</li> </ul>	Alpine Bluegrass <ul style="list-style-type: none"> <li>● no evidence of Alpine Bluegrass on plot</li> </ul>	

Results Summary of Sä Dena Hes Mine Phase II Revegetation Test Program – 2007

<p>Alfalfa</p> <ul style="list-style-type: none"> <li>● good distribution over plot</li> <li>● approximately 30 cm high</li> <li>● some plants in flower</li> </ul>	<p>Alfalfa</p> <ul style="list-style-type: none"> <li>● good distribution over plot</li> <li>● approximately 30 cm high</li> <li>● most plants in flower</li> </ul>	<p>Alfalfa</p> <ul style="list-style-type: none"> <li>● good distribution over plot</li> <li>● approximately 30 cm high</li> <li>● some plants in flower</li> </ul>	
<p>Comments</p> <ul style="list-style-type: none"> <li>● moderate amount of litter from previous years' growth</li> <li>● One Showy Locoweed plant observed (similar in number and size to those observed in 2006)</li> </ul>	<p>Comments</p> <ul style="list-style-type: none"> <li>● moderate amount of litter from previous years' growth</li> <li>● no evidence of legumes seeded in 2001</li> </ul>	<p>Comments</p> <ul style="list-style-type: none"> <li>● moderate amount of litter from previous years' growth</li> <li>● no evidence of legumes seeded in 2001</li> </ul>	
<p>Volunteer species on and between test plots include willow (<i>Salix</i> sp.) and Red Clover (<i>Trifolium pratense</i>).</p>			<p>Growth on the control plot includes small amounts of Violet Wheatgrass, Tufted Hairgrass and Alfalfa. These species are presumably the result of windblown seed from the other plots. The Alfalfa and some of the grasses appear to have been grazed on by geese.</p>

**Table 5 TMF with 300 mm Soil (Site 5B)**

<b>Plot #1</b>	<b>Plot #2</b>	<b>Plot # 3</b>	<b>Plot # 4</b>
2001: 25 kg/ha seed & 120 kg/ha fertilizer  2003: 25 kg/ha seed & 120 kg/ha fertilizer	2001: 25 kg/ha seed & 60 kg/ha fertilizer  2003: 50 kg/ha seed & 180 kg/ha fertilizer	2001: 12 kg/ha seed & 60 kg/ha fertilizer  2003: 75 kg/ha seed & 240 kg/ha fertilizer	Control (no seed or fertilizer)
Estimated total cover 25%	Estimated total cover 50%	Estimated total cover 15%	Estimated total cover <5%
Violet Wheatgrass <ul style="list-style-type: none"> <li>● moderate distribution over plot</li> <li>● approximately 25 cm high</li> <li>● all plants in seed</li> </ul>	Violet Wheatgrass <ul style="list-style-type: none"> <li>● good distribution over plot</li> <li>● approximately 25 cm high</li> <li>● all plants in seed</li> </ul>	Violet Wheatgrass <ul style="list-style-type: none"> <li>● low distribution over plot</li> <li>● approximately 25 cm high</li> <li>● all plants in seed</li> </ul>	
Tufted Hairgrass <ul style="list-style-type: none"> <li>● no evidence of Tufted Hairgrass on plot</li> </ul>	Tufted Hairgrass <ul style="list-style-type: none"> <li>● sparse distribution over plot</li> <li>● approximately 60 cm high</li> <li>● all plants in seed</li> </ul>	Tufted Hairgrass <ul style="list-style-type: none"> <li>● sparse distribution over plot</li> <li>● approximately 60 cm high</li> <li>● all plants in seed</li> </ul>	
Ticklegrass <ul style="list-style-type: none"> <li>● no evidence of Ticklegrass on plot</li> </ul>	Ticklegrass <ul style="list-style-type: none"> <li>● very sparse distribution over plot</li> <li>● approximately 15 cm high</li> <li>● most plants in seed</li> </ul>	Ticklegrass <ul style="list-style-type: none"> <li>● sparse distribution over plot</li> <li>● approximately 15 cm high</li> <li>● most plants in seed</li> </ul>	
Rocky Mountain Fescue <ul style="list-style-type: none"> <li>● moderate distribution over plot</li> <li>● approximately 20 cm high</li> <li>● all plants in seed</li> </ul>	Rocky Mountain Fescue <ul style="list-style-type: none"> <li>● moderate distribution over plot</li> <li>● approximately 20 cm high</li> <li>● all plants in seed</li> </ul>	Rocky Mountain Fescue <ul style="list-style-type: none"> <li>● sparse distribution over plot</li> <li>● approximately 20 cm high</li> <li>● all plants in seed</li> </ul>	
Alpine Bluegrass <ul style="list-style-type: none"> <li>● no evidence of Alpine Bluegrass on plot</li> </ul>	Alpine Bluegrass <ul style="list-style-type: none"> <li>● no evidence of Alpine Bluegrass on plot</li> </ul>	Alpine Bluegrass <ul style="list-style-type: none"> <li>● no evidence of Alpine Bluegrass on plot</li> </ul>	

Results Summary of Sä Dena Hes Mine Phase II Revegetation Test Program – 2007

<p>Alfalfa</p> <ul style="list-style-type: none"> <li>● moderate, but patchy distribution over plot</li> <li>● approximately 30 cm high</li> <li>● some plants in flower</li> </ul>	<p>Alfalfa</p> <ul style="list-style-type: none"> <li>● good distribution over plot</li> <li>● approximately 30 cm high</li> <li>● most plants in flower</li> </ul>	<p>Alfalfa</p> <ul style="list-style-type: none"> <li>● moderate distribution over plot</li> <li>● approximately 30 cm high</li> <li>● some plants in flower</li> </ul>	
<p>Comments</p> <ul style="list-style-type: none"> <li>● moderate amount of litter from previous years' growth</li> <li>● One Bear Root plant observed (first evidence since seeded in 2001)</li> <li>●</li> </ul>	<p>Comments</p> <ul style="list-style-type: none"> <li>● moderate amount of litter from previous years' growth</li> <li>● no evidence of legumes seeded in 2001</li> </ul>	<p>Comments</p> <ul style="list-style-type: none"> <li>● moderate amount of litter from previous years' growth</li> <li>● no evidence of legumes seeded in 2001</li> </ul>	
<p>Volunteer species on and between test plots include very small amounts of bluegrass (possibly <i>Poa arctica</i>). Minor amounts of Alpine Bluegrass growing outside plots.</p>			<p>Growth on the control plot includes small amounts of Violet Wheatgrass and Alfalfa. These grasses are presumably the result of windblown seed from the other plots. The Alfalfa and some of the grasses appear to have been grazed on by geese.</p>

**Table 6 TMF with 500 mm Rock and 300 mm Soil (Site 5C)**

<b>Plot #1</b>	<b>Plot #2</b>	<b>Plot # 3</b>	<b>Plot # 4</b>
2001: 24 kg/ha seed & 120 kg/ha fertilizer  2003: 25 kg/ha seed & 120 kg/ha fertilizer	2001: 24 kg/ha seed & 60 kg/ha fertilizer  2003: 50 kg/ha seed & 180 kg/ha fertilizer	2001: 12 kg/ha seed & 60 kg/ha fertilizer  2003: 75 kg/ha seed & 240 kg/ha fertilizer	Control (no seed or fertilizer)
Estimated total cover 90%	Estimated total cover 90%	Estimated total cover 100%	Estimated total cover 10%
Violet Wheatgrass <ul style="list-style-type: none"> <li>● very good distribution over plot</li> <li>● approximately 25 cm high</li> <li>● all plants in seed</li> </ul>	Violet Wheatgrass <ul style="list-style-type: none"> <li>● very good distribution over plot</li> <li>● approximately 25 cm high</li> <li>● all plants in seed</li> </ul>	Violet Wheatgrass <ul style="list-style-type: none"> <li>● very good distribution over plot</li> <li>● approximately 25 cm high</li> <li>● all plants in seed</li> </ul>	
Tufted Hairgrass <ul style="list-style-type: none"> <li>● moderate distribution over plot</li> <li>● approximately 60 cm high</li> <li>● all plants in seed</li> </ul>	Tufted Hairgrass <ul style="list-style-type: none"> <li>● moderate distribution over plot</li> <li>● approximately 60 cm high</li> <li>● all plants in seed</li> </ul>	Tufted Hairgrass <ul style="list-style-type: none"> <li>● moderate distribution over plot</li> <li>● approximately 60 cm high</li> <li>● all plants in seed</li> </ul>	
Ticklegrass <ul style="list-style-type: none"> <li>● very sparse distribution over plot</li> <li>● approximately 15 cm high</li> <li>● most plants in seed</li> </ul>	Ticklegrass <ul style="list-style-type: none"> <li>● very sparse distribution over plot</li> <li>● approximately 15 cm high</li> <li>● most plants in seed</li> </ul>	Ticklegrass <ul style="list-style-type: none"> <li>● no evidence of Ticklegrass on plot</li> </ul>	
Rocky Mountain Fescue <ul style="list-style-type: none"> <li>● sparse distribution over plot</li> <li>● approximately 20 cm high</li> <li>● all plants in seed</li> </ul>	Rocky Mountain Fescue <ul style="list-style-type: none"> <li>● sparse distribution over plot</li> <li>● approximately 20 cm high</li> <li>● all plants in seed</li> </ul>	Rocky Mountain Fescue <ul style="list-style-type: none"> <li>● sparse distribution over plot</li> <li>● approximately 20 cm high</li> <li>● all plants in seed</li> </ul>	
Red Fescue <ul style="list-style-type: none"> <li>● good distribution over plot</li> <li>● approximately 15 cm</li> </ul>	Red Fescue <ul style="list-style-type: none"> <li>● good distribution over plot</li> <li>● approximately 30 cm</li> </ul>	Red Fescue <ul style="list-style-type: none"> <li>● good distribution over plot</li> <li>● approximately 30 cm</li> </ul>	

Results Summary of Sä Dena Hes Mine Phase II Revegetation Test Program – 2007

<p>high</p> <ul style="list-style-type: none"> <li>● very few plants in seed</li> </ul>	<p>high</p> <ul style="list-style-type: none"> <li>● very few plants in seed</li> </ul>	<p>high</p> <ul style="list-style-type: none"> <li>● very few plants in seed</li> </ul>	
<p>Alpine Bluegrass</p> <ul style="list-style-type: none"> <li>● very sparse distribution over plot (only on edges of plot)</li> <li>● approximately 10 cm high</li> <li>● low, tufted growth with no plants in seed</li> </ul>	<p>Alpine Bluegrass</p> <ul style="list-style-type: none"> <li>● very sparse distribution over plot (only on edges of plot)</li> <li>● approximately 10 cm high</li> <li>● low, tufted growth with no plants in seed</li> </ul>	<p>Alpine Bluegrass</p> <ul style="list-style-type: none"> <li>● no evidence of Alpine Bluegrass on plot</li> </ul>	
<p>Kentucky Bluegrass</p> <ul style="list-style-type: none"> <li>● sparse distribution over plot</li> <li>● approximately 25cm high</li> <li>● very few plants in seed</li> </ul>	<p>Kentucky Bluegrass</p> <ul style="list-style-type: none"> <li>● sparse distribution over plot</li> <li>● approximately 25 cm high</li> <li>● very few plants in seed</li> </ul>	<p>Kentucky Bluegrass</p> <ul style="list-style-type: none"> <li>● sparse distribution over plot</li> <li>● approximately 25 cm high</li> <li>● very few plants in seed</li> </ul>	
<p>Alfalfa</p> <ul style="list-style-type: none"> <li>● good distribution over plot</li> <li>● approximately 30 cm high</li> <li>● some plants in flower</li> </ul>	<p>Alfalfa</p> <ul style="list-style-type: none"> <li>● good distribution over plot</li> <li>● approximately 30 cm high</li> <li>● some plants in flower</li> </ul>	<p>Alfalfa</p> <ul style="list-style-type: none"> <li>● good distribution over plot</li> <li>● approximately 30 cm high</li> <li>● some plants in flower</li> </ul>	
<p>Comments</p> <ul style="list-style-type: none"> <li>● moderate amount of litter from previous years' growth</li> <li>● Red Fescue is forming a dense ground cover but producing little seed</li> <li>● no evidence of legumes seeded in 2001</li> </ul>	<p>Comments</p> <ul style="list-style-type: none"> <li>● moderate amount of litter from previous years' growth</li> <li>● Red Fescue is forming a dense ground cover but producing seed</li> <li>● no evidence of legumes seeded in 2001</li> </ul>	<p>Comments</p> <ul style="list-style-type: none"> <li>● moderate amount of litter from previous years' growth</li> <li>● Red Fescue is forming a dense ground cover but producing seed</li> <li>● no evidence of legumes seeded in 2001</li> </ul>	
<p>A good growth of Violet Wheatgrass, Tufted Hairgrass and Alfalfa is forming between the plots. Volunteer species include willows (<i>Salix</i> spp.) and Bluejoint Reedgrass (<i>Calamagrostis canadensis</i>).</p>			<p>Growth on the control plot includes small amounts of Violet Wheatgrass, Ticklegrass, Red Fescue and Alfalfa. These grasses are presumably the result of windblown seed from the other plots.</p>

From an examination of the 2007 monitoring results, the following assessment of the seeded species can be made:

**Violet Wheatgrass (northern native grass seeded at all sites in 2001 and 2003)**

In previous years, this species has been the most successful of all the seeded grasses. A decline in Violet Wheatgrass coverage, however, was seen at all sites during the 2007 monitoring, and it was not observed on two of the Landfill site plots. At some sites, the dense layer of Violet Wheatgrass litter from previous years is interfering with the current season's growth.

**Tufted Hairgrass (northern native grass seeded at all sites in 2001)**

Although this species was not seeded in 2003 (seed not available at time of seeding), it has persisted at all sites from its initial seeding in 2001. Although not providing a dense cover Tufted Hairgrass appears to compete well with other seeded species. The plants are well developed and are producing seed.

**Ticklegrass (northern native grass seeded at all sites in 2001 and 2003)**

Ticklegrass has a sparse cover over the test plots (non-existent on several plots). It is not competing well with the other grasses, and because it has very small seeds that are easily wind-blown, Ticklegrass is found growing in patches away from the seeded plots. Where Ticklegrass does occur, plants are well developed and producing seed.

**Alpine Bluegrass (northern native grass seeded at Sites 2 and 3 in 2001 and at all sites in 2003)**

This distribution of this bluegrass species ranges from non-existent to good. Its best showing is at Site 2 (Jewel Box haul road site) where it is one of the dominant species. The plants here are mostly all in seed. There is no longer evidence of Alpine Bluegrass at most TMF Sites, and where it does occur, plants are poorly developed with a low, tufted growth form and with very few producing seed.

**Glaucous Bluegrass (northern native grass seeded at Sites 1, 5A, 5B and 5C in 2001)**

Glaucous Bluegrass was not identified at any of the test plots in 2007, although this species can be confused with Alpine Bluegrass if not in flower or seed.

**Kentucky Bluegrass (non-native grass seeded at Site 5C in 2003)**

Kentucky Bluegrass is sparsely distributed over the plots at Site 5C (the only site where it was seeded). Plants are poorly developed with few in seed.

**Sheep Fescue (northern native grass seeded at Sites 1, 2 and 3 in 2001)**

This distribution of this species ranges from sparse to good on the lower elevation sites. There was no evidence of Sheep Fescue at the Jewel Box Haul Road Site (Site 2) in 2007. All plants observed in 2007 were in seed.

**Rocky Mountain Fescue (northern native grass seeded at Sites 5A, 5B and 5C in 2001)**

Rocky Mountain Fescue has a sparse to moderate distribution over the three TMF sites where it was seeded in 2001. Like Sheep Fescue, it is not a major component of the vegetative cover. All plants observed in 2007 were in seed.

**Red Fescue (non-native grass seeded at Site 5C in 2003)**

Red Fescue is well distributed over the plots at Site 5C (the only site where it was seeded). It has a dense growth on all plots, but these plants are poorly developed with few in seed (like Kentucky Bluegrass, this agronomic species is sod-forming and has the potential to choke out less competitive grass species).

**Showy Locoweed (northern native legume seeded at all sites in 2001)**

One Showy Locoweed plant observed on TMF Plot 5A in 2006 (the first time it had been observed since it was seeded in 2001) was observed again in 2007, and another plant was observed for the first time at the Jewel Box Haul Road site in 2007.

**Bear Root (northern native legume seeded at all sites in 2001)**

In 2007, Bear Root plants were observed growing at the Main Access Road (Site 1), Jewel Box Haul Road (Site 2), Landfill (Site 3) and the TMF with 200 mm soil (Site 5A). This is the third year this legume species has been observed since it was seeded in 2001.

**Alfalfa (non-native legume seeded at all sites in 2003)**

The distribution of this legume ranges from very sparse to good. It has a non-uniform (patchy) cover on the test plots. Some plants were in flower at all sites.

#### **4.2 OBSERVATIONS OF SEED TEST PLOTS ESTABLISHED IN 2005**

In order to determine the optimum season for seeding, additional seed test plots were established in the spring and fall of 2005 at the Main Access Road (Site1), the Jewel Box Haul Road Site (Site 2) and at the Landfill (Site 3). For seed and fertilizer mixes, see report prepared by Access Consulting Group in January 2006 (AMCL 2006).

At the Main Access Road site, the spring and fall test plots showed a very sparse vegetative growth (the spring plot had about 15% cover and the fall plot about 5% cover) at the time of the September 2007 monitoring.

On the spring test plot, the seeded grass species, in order of dominance, were Alpine Bluegrass, Rocky Mountain Fescue, Tufted Hairgrass and Violet Wheatgrass, along with the seeded legume Yellow Locoweed. There was no evidence of the seeded species Ticklegrass, Arctic Lupine, Showy Locoweed or Bear Root. The observed grasses were in seed, but the legume had not flowered. Willows (*Salix* spp.) and Fleabane (*Erigeron* sp.) were also colonizing the plot.

On the fall test plot, the seeded grass species, in order of dominance, were Alpine Bluegrass, Rocky Mountain Fescue and Tufted Hairgrass. There was no evidence of the seeded species Ticklegrass, Violet Wheatgrass, Yellow Locoweed, Showy Locoweed, Arctic Lupine, or Bear Root. The observed grasses were in seed. Balsam Poplar (*Populus balsamifera*), White Spruce (*Picea glauca*), willows (*Salix* spp.) and Trisetum (*Trisetum spicatum*) were also colonizing the plot.

At the Jewell Box Haul Road site, the spring and fall test plots showed a moderate vegetative growth (the spring plot had about 30% cover and the fall plot about 15% cover) at the time of the September 2007 monitoring.

On the spring test plot, the seeded grass species, in order of dominance, were Alpine Bluegrass, Rocky Mountain Fescue and Ticklegrass, along with the seeded legume Yellow Locoweed. There was no evidence of the seeded species Tufted Hairgrass, Violet Wheatgrass, Arctic Lupine, Showy Locoweed or Bear Root. The observed grasses were in seed, but the legume had not flowered. Willows (*Salix* spp.) and Trisetum (*Trisetum spicatum*) were also colonizing the plot.

On the fall test plot, the seeded grass species, in order of dominance, were Violet Wheatgrass, Alpine Bluegrass and Ticklegrass. There was no evidence of the seeded species Rocky Mountain Fescue, Tufted Hairgrass, Arctic Lupine, Yellow Locoweed, Showy Locoweed or Bear Root. The observed grasses were in seed. Willows (*Salix* spp.), Fleabane (*Erigeron* sp.) Sedge (*Carex* sp.) and Trisetum (*Trisetum spicatum*) were also colonizing the plot.

At the Landfill site, both the spring and fall test plots showed a very sparse vegetative growth (the spring plot had about 5% cover and the fall plot about 15% cover) at the time of the September 2007 monitoring.

On the spring test plot, the seeded grass species, in order of dominance, were Rocky Mountain Fescue and Violet Wheatgrass, along with the seeded legume Yellow Locoweed. There was no evidence of the seeded species Tufted Hairgrass, Ticklegrass, Alpine Bluegrass, Arctic Lupine, Showy Locoweed or Bear Root. The observed grasses were in seed, but the legume had not flowered. Balsam Poplar (*Populus balsamifera*), White Spruce (*Picea glauca*) and willows (*Salix* spp.) were also colonizing the plot.

On the fall test plot, the seeded grass species, in order of dominance, were Rocky Mountain Fescue, Ticklegrass, Violet Wheatgrass and Alpine Bluegrass, along with the seeded legume Yellow Locoweed. There was no evidence of the seeded species Tufted Hairgrass, Arctic Lupine, Showy Locoweed or Bear Root. The observed grasses were in seed, but the legume had not flowered. Balsam Poplar (*Populus balsamifera*), Lodgepole pine (*Pinus contorta*) and Fleabane (*Erigeron* sp.) and another bluegrass (*Poa arctica* ?) were also colonizing the plot.

#### **4.3 SEED TEST PLOT CONCLUSIONS**

Based on the 2007 monitoring results, the following provisional conclusions can be made about the seed test plots:

- Violet Wheatgrass, Rocky Mountain Fescue and Alfalfa are the most successful of the species seeded on the TMF sites. Ticklegrass, Tufted Hairgrass and Alpine Bluegrass have become less prevalent on these sites.

- Alpine Bluegrass and alfalfa are the most successful of the seeded species near treeline (Jewel Box haul road site ).
- Ticklegrass is surviving at most sites. Because Ticklegrass cannot compete well with other grasses, it is not a major component of the vegetative cover.
- Tufted Hairgrass, although not forming a large part of the vegetative cover, is doing well at test sites other than those on the TMF.
- Glaucous Bluegrass (a northern native species seeded in 2001) has not been successful.
- The slow-germinating northern native legume species seeded at the test plots in 2001 are starting to appear. Showy Locoweed was observed for the first time in 2006 at TMF Site 5A and in 2007 at the Jewel Box Haul Road site. Bear Root plants were observed for the first time in 2005, and in 2006 and 2007 was seen at four of the six sites.
- The non-native legume, Alfalfa (seeded in the spring of 2003) is growing on all plots, has a patchy, non-uniform cover on most plots.
- The two non-native agronomic grass species (Red Fescue and Kentucky Bluegrass), seeded at the TMF Site 5C in 2003, are growing on all plots, with the Red Fescue the most prevalent of the two. These aggressive, rhizomatous, turf-forming species may inhibit the growth of the less competitive native species, but their soil-binding properties may be an asset for revegetating the more difficult areas of the TMF.
- The two TMF sites with soil covers (a 200 mm cap at Site 5A and a 300 mm cap at Site 5B) have similar plant species compositions, although there has been a noticeable decline in the vegetative cover on the plots with a 300 mm cap. As the two sites (5A and 5B) are situated close together, it is unlikely that the difference in vegetative covers can be attributed to environmental factors such as wind.
- It is still too early to determine the optimum seeding season (spring or fall) from observations at the test plots established in 2005.

#### **4.4 SHRUB TEST PLOT OBSERVATIONS**

Following are 2007 observations of the two shrub test plots located at Km 16 and at km 22 of the main access road (these willow stem cuttings were staked in September 2000):

<b>Site</b>	<b>Number of Cuttings Established in 2000</b>	<b>Number of Plants Surviving in 2007</b>
Access Road Km 16	40	21
Access Road Km 22	40	13

At the km 22 site, the number of surviving transplanted willow cuttings have dropped and the transplants are not thriving. Staked willow stem cuttings at the Km 16 site appear much healthier and have grown into large shrubs.

#### **4.5 PLANT TISSUE AND SOILS METALS ANALYSIS**

The 2007 soil metal analysis results show that some soil metal concentrations are noticeably higher at Site 1 (Km 20.6 Main Access Road), including antimony, arsenic, mercury, molybdenum, and zinc, while other soil metal levels are higher at Site 5A (TMF site with 200 mm soil cap), including aluminum, chromium, cobalt, iron, lead, lithium, strontium and titanium.

An examination of the 2007 plant tissue analysis results for the aforementioned metals show that elevations in some of the plant tissue metal concentrations correspond to elevations in soil metal levels. The metals/plant species that show this correlation are indicated in the following Table 6:

**Table 6. Plant species that show correlation between tissue and soil metal levels.**

	<b>Alfalfa</b>	<b>Violet Wheatgrass</b>	<b>Tufted Hairgrass</b>	<b>Sheep/Rocky Mtn Fescue</b>
<b>Aluminum</b>				
<b>Antimony</b>				
<b>Arsenic</b>				
<b>Chromium</b>				
<b>Cobalt</b>	•			
<b>Iron</b>	•			•
<b>Lead</b>	•	•	•	•
<b>Lithium</b>			•	•
<b>Molybdenum</b>	•			
<b>Strontium</b>	•	•	•	•
<b>Titanium</b>	•			
<b>Zinc</b>				

This data provides an indication of an uptake of some metals by each of the surviving seeded plant species (note that Ticklegrass and Alpine Bluegrass were not sampled in 2007 because of the low availability of plant material).

As seen in the following Table 7, lead concentrations are higher at Site 5A (TMF Plot) than at Site 1 (Main Access Road Plot) in both the soil and the plant species sampled.

**Table 7. Lead Concentrations (ug/g) at Site 1 (Km 20.6 Main Access Road) and Site 5A (TMF with 200 mm Soil)**

	<b>Site 1</b>	<b>Site 5A</b>
<b>Soil</b>	13.93	56.88
<b>Alfalfa</b>	0.30	1.00
<b>Violet Wheatgrass</b>	0.30	0.52
<b>Tufted Hairgrass</b>	0.50	0.86
<b>Sheep/Rocky Mtn Fescue</b>	0.40	0.78

As described in Section 3.3, samples of leaves and the current year’s stem growth from Willows and Balsam Poplar, along with soil samples, were collected at two sites, the northwest margin of the TMF and a nearby control site (see Section 3.3 for UTM coordinates). The objective of these sample collections was to assess the potential for these species (which are already beginning to colonize the uncapped portion of the TMF) for revegetating the TMF.

As was anticipated, the control sample soils have higher nutrient levels than the TMF soils. Also of note are the significantly higher levels of some metals, particularly lead and zinc, found in the TMF soil and vegetation samples, as shown in the following Table 8:

**Table 8. Lead and Zinc Concentrations (ug/g) at the TMF and Control Sites**

	Lead		Zinc	
	TMF	Control	TMF	Control
Willow soils	3280	39.3	3630	163
Willow leaves	53.5	<0.2	2380	310
Willow stems	20.9	0.72	436	112
Balsam Poplar soils	3750	72.2	4300	182
Balsam Poplar leaves	6.11	0.5	2130	839
Balsam Poplar stems	8.14	0.4	267	166

The results of the 2007 laboratory analysis for metal concentrations in Soil and Plant tissue are shown in Appendix A.

## 5.0 REFERENCES

Access Mining Consultants Ltd. 2007. *Results Summary of Sä Dena Hes Mine Phase II Revegetation Test Program - 2006*. Prepared for TeckCominco Ltd.

Access Mining Consultants Ltd. 2006. *Results Summary of Sä Dena Hes Mine Phase II Revegetation Test Program - 2005*. Prepared for TeckCominco Ltd.

Access Mining Consultants Ltd. 2005. *Results Summary of Sä Dena Hes Mine Phase II Revegetation Test Program - 2004*. Prepared for TeckCominco Ltd.

Access Mining Consultants Ltd. 2004. *Results Summary of Sä Dena Hes Mine Phase II Revegetation Test Program - 2003*. Prepared for TeckCominco Ltd.

Access Mining Consultants Ltd. 2003. *Results Summary of Sä Dena Hes Mine Phase II Revegetation Test Program - 2002*. Prepared for TeckCominco Ltd.

Access Mining Consultants Ltd. 2002. *Results Summary of Sä Dena Hes Mine Phase II Revegetation Test Program - 2001*. Prepared for TeckCominco Ltd.

Access Mining Consultants Ltd. 2001. *Land Reclamation and Revegetation Plan Preliminary Test Program Summary Report - 2000*. Prepared for Cominco Ltd.

Cominco Ltd. 2000. *Sä Dena Hes Mine Detailed Decommissioning and Reclamation Plan*. Prepared by Access Mining Consultants Ltd. and SRK Ltd.



## **Sä Dena Hes Mine**

Land Reclamation and Revegetation Plan

Results Summary of

### ***Phase II Revegetation Test Program - 2007***

---

## *Appendix A*

### 2007 Laboratory Results of Plants Tissue and Soils Metal Analysis





Bill To: Access Mining Consultants Ltd.	Project:	Lot ID: <b>574602</b>
Report To: Access Mining Consultants Ltd.	ID: COM-01	Approval Status: Approved
# 3 Calcite Business Centre	Name: Sa Dena Hes Reveg	Invoice Frequency: by Lot
151 Industrial Road	Location: Sa Dena Hes	COD Status:
Whitehorse, YT, Canada	LSD:	Control Number:
Y1A 2V3	P.O.:	Date Received: Sep 19, 2007
Attn: Scott Keesey	Acct code: COM-07-01	Date Reported: Sep 26, 2007
Sampled By: Stu Withers		Report Number: 1049669
Company: LES		

Contact	Company	Address
Scott Keesey	Access Mining Consultants Ltd.	# 3 Calcite Business Centre, 151 Industrial Road Whitehorse, YT Y1A 2V3 Phone: (867) 668-6463 Fax: (867) 667-6680 Email: scott@accessconsulting.ca

	Copies	Delivery	Format
M	1	Post	
	1	Email - Single Report	PDF
	1	Email - Single Report	Standard Crosstab

Contact	Company	Address
Paul Inglis	Access Mining Consultants Ltd.	# 3 Calcite Business Centre, 151 Industrial Road Whitehorse, YT Y1A 2V3 Phone: (867) 668-6463 Fax: (867) 667-6680 Email: paul@accessconsulting.ca

	Copies	Delivery	Format
	1	Email - Single Report	PDF
	1	Email - Single Report	Standard Crosstab

\_\_\_\_\_ PAGES IN THIS TRANSMISSION

**Notes To Clients:**

**Reports associated with this Lot**

<u>Id/Format/Report Date</u>	<u>Id/Format/Report Date</u>	<u>Id/Format/Report Date</u>
------------------------------	------------------------------	------------------------------

The information contained on this and all other pages transmitted, is intended for the addressee only and is considered confidential. If the reader is not the intended recipient, you are hereby notified that any use, dissemination, distribution or copy of this transmission is strictly prohibited. If you receive this transmission by error, or if this transmission is not satisfactory, please notify us by telephone.

**Sample Custody**

Bill To: Access Mining Consultants Ltd. Project:  
 Report To: Access Mining Consultants Ltd. ID: COM-01  
 # 3 Calcite Business Centre Name: Sa Dena Hes Reveg  
 151 Industrial Road Location: Sa Dena Hes  
 Whitehorse, YT, Canada LSD:  
 Y1A 2V3 P.O.:  
 Attn: Scott Keesey Acct code: COM-07-01  
 Sampled By: Stu Withers  
 Company: LES

Lot ID: **574602**  
 Control Number:  
 Date Received: Sep 19, 2007  
 Date Reported: Sep 26, 2007  
 Report Number: 1049669

**Sample Disposal Date: October 26, 2007**

All samples will be stored until this date unless other instructions are received. Please indicate other requirements below and return this form to the address or fax number on the bottom of this page.

Extend Sample Storage Until \_\_\_\_\_ (MM/DD/YY)

The following charges apply to extended sample storage:

Storage for 1 to 5 samples per month	\$ 10.00
Storage for 6 to 20 samples per month	\$ 15.00
Storage for 21 to 50 samples per month	\$ 30.00
Storage for 51 to 200 samples per month	\$ 60.00
Storage for more than 200 samples per month	\$ 110.00

Return Sample, collect, to the address below via:

Greyhound

Loomis

Purolator

Other (specify) \_\_\_\_\_

Name \_\_\_\_\_

Company \_\_\_\_\_

Address \_\_\_\_\_

Phone \_\_\_\_\_

Fax \_\_\_\_\_

Signature \_\_\_\_\_

## Analytical Report

Bill To: Access Mining Consultants Ltd.	Project:	Lot ID: <b>574602</b>
Report To: Access Mining Consultants Ltd.	ID: COM-01	Control Number:
# 3 Calcite Business Centre	Name: Sa Dena Hes Reveg	Date Received: Sep 19, 2007
151 Industrial Road	Location: Sa Dena Hes	Date Reported: Sep 26, 2007
Whitehorse, YT, Canada	LSD:	Report Number: 1049669
Y1A 2V3	P.O.:	
Attn: Scott Keesey	Acct code: COM-07-01	
Sampled By: Stu Withers		
Company: LES		

	Reference Number	574602-1	574602-2	574602-3		
	Sample Date	Sep 17, 2007	Sep 17, 2007	Sep 17, 2007		
	Sample Location					
	Sample Description	Site 1 Tufted Hairgrass	Site 1 Sheep Fescue	Site 1 Alfalfa		
	Matrix	Tissue	Tissue	Tissue		
Analyte	Units	Results	Results	Results	Detection Limit	
<b>Metals Total</b>						
Aluminum	Total (dry weight)	ug/g	15	24	61.6	1
Antimony	Total (dry weight)	ug/g	<0.5	<0.5	<0.5	0.5
Arsenic	Total (dry weight)	ug/g	<0.2	<0.2	<0.2	0.2
Barium	Total (dry weight)	ug/g	43.8	21.2	204	0.03
Beryllium	Total (dry weight)	ug/g	<0.02	<0.02	0.03	0.01
Bismuth	Total (dry weight)	ug/g	<0.5	<0.5	<0.5	0.5
Cadmium	Total (dry weight)	ug/g	<0.05	<0.05	0.2	0.05
Calcium	Total (dry weight)	ug/g	2330	1200	47800	2
Chromium	Total (dry weight)	ug/g	0.44	0.15	0.04	0.04
Cobalt	Total (dry weight)	ug/g	<0.05	<0.05	0.08	0.05
Copper	Total (dry weight)	ug/g	2.6	2.1	4.4	0.05
Iron	Total (dry weight)	ug/g	25	52	68.2	1
Lead	Total (dry weight)	ug/g	0.50	0.4	0.3	0.3
Lithium	Total (dry weight)	ug/g	0.4	0.63	3.2	0.1
Magnesium	Total (dry weight)	ug/g	644	633	3540	1
Manganese	Total (dry weight)	ug/g	42.0	40.1	49.2	0.3
Molybdenum	Total (dry weight)	ug/g	4.6	1.7	3.2	0.05
Nickel	Total (dry weight)	ug/g	1.6	1.2	2.3	0.1
Phosphorus	Total (dry weight)	ug/g	1350	861	1400	1
Potassium	Total (dry weight)	ug/g	7140	2990	10000	5
Selenium	Total (dry weight)	ug/g	<0.2	<0.3	0.3	0.3
Silver	Total (dry weight)	ug/g	<0.2	<0.2	<0.1	0.2
Sodium	Total (dry weight)	ug/g	5.1	4	17	1
Strontium	Total (dry weight)	ug/g	3.38	1.80	74.5	0.02
Titanium	Total (dry weight)	ug/g	0.4	1.9	0.3	0.05
Vanadium	Total (dry weight)	ug/g	<0.2	<0.2	<0.1	0.1
Zinc	Total (dry weight)	ug/g	22.2	17.0	24.8	0.1
Zirconium	Total (dry weight)	ug/g	<0.05	0.08	<0.05	0.05
Thallium	Total (dry weight)	ug/g	1.5	1.1	1.6	0.3

## Analytical Report

Bill To: Access Mining Consultants Ltd.	Project:	
Report To: Access Mining Consultants Ltd.	ID: COM-01	Lot ID: <b>574602</b>
# 3 Calcite Business Centre	Name: Sa Dena Hes Reveg	Control Number:
151 Industrial Road	Location: Sa Dena Hes	Date Received: Sep 19, 2007
Whitehorse, YT, Canada	LSD:	Date Reported: Sep 26, 2007
Y1A 2V3	P.O.:	Report Number: 1049669
Attn: Scott Keesey	Acct code: COM-07-01	
Sampled By: Stu Withers		
Company: LES		

	Reference Number	574602-4	574602-5	574602-6		
	Sample Date	Sep 17, 2007	Sep 17, 2007	Sep 17, 2007		
	Sample Location					
	Sample Description	Site 1 Violet Wheatgrass Tissue	TMF 5A Tufted Hairgrass Tissue	TMF 5A Rocky Mountain Fescue Tissue		
	Matrix					
Analyte	Units	Results	Results	Results	Detection Limit	
<b>Metals Total</b>						
Aluminum	Total (dry weight)	ug/g	8.7	16	17	1
Antimony	Total (dry weight)	ug/g	<0.5	<0.5	<0.5	0.5
Arsenic	Total (dry weight)	ug/g	<0.2	<0.2	<0.2	0.2
Barium	Total (dry weight)	ug/g	33.9	25.2	35.5	0.03
Beryllium	Total (dry weight)	ug/g	<0.01	<0.01	<0.01	0.01
Bismuth	Total (dry weight)	ug/g	<0.5	<0.5	<0.5	0.5
Cadmium	Total (dry weight)	ug/g	0.07	0.1	<0.05	0.05
Calcium	Total (dry weight)	ug/g	1740	4070	5510	2
Chromium	Total (dry weight)	ug/g	0.29	0.33	0.17	0.04
Cobalt	Total (dry weight)	ug/g	<0.05	<0.05	<0.05	0.05
Copper	Total (dry weight)	ug/g	1.7	3.3	3.4	0.05
Iron	Total (dry weight)	ug/g	24	31	25	1
Lead	Total (dry weight)	ug/g	0.3	0.86	0.78	0.3
Lithium	Total (dry weight)	ug/g	0.4	0.58	1.2	0.1
Magnesium	Total (dry weight)	ug/g	906	782	320	1
Manganese	Total (dry weight)	ug/g	23.8	44.7	46.8	0.3
Molybdenum	Total (dry weight)	ug/g	0.64	0.89	1.6	0.05
Nickel	Total (dry weight)	ug/g	0.50	0.75	0.60	0.1
Phosphorus	Total (dry weight)	ug/g	1770	1490	898	1
Potassium	Total (dry weight)	ug/g	7340	10200	6690	5
Selenium	Total (dry weight)	ug/g	<0.2	<0.2	0.4	0.3
Silver	Total (dry weight)	ug/g	<0.1	<0.1	<0.1	0.2
Sodium	Total (dry weight)	ug/g	5	9.9	5.3	1
Strontium	Total (dry weight)	ug/g	2.37	16.3	24.1	0.02
Titanium	Total (dry weight)	ug/g	0.2	0.4	0.3	0.05
Vanadium	Total (dry weight)	ug/g	<0.1	<0.1	<0.1	0.1
Zinc	Total (dry weight)	ug/g	16.5	25.3	30.7	0.1
Zirconium	Total (dry weight)	ug/g	<0.05	<0.05	<0.05	0.05
Thallium	Total (dry weight)	ug/g	1.3	1.3	1.2	0.3

## Analytical Report

Bill To: Access Mining Consultants Ltd.	Project:	
Report To: Access Mining Consultants Ltd.	ID: COM-01	Lot ID: <b>574602</b>
# 3 Calcite Business Centre	Name: Sa Dena Hes Reveg	Control Number:
151 Industrial Road	Location: Sa Dena Hes	Date Received: Sep 19, 2007
Whitehorse, YT, Canada	LSD:	Date Reported: Sep 26, 2007
Y1A 2V3	P.O.:	Report Number: 1049669
Attn: Scott Keesey	Acct code: COM-07-01	
Sampled By: Stu Withers		
Company: LES		

	Reference Number	574602-7	574602-8	574602-9		
	Sample Date	Sep 17, 2007	Sep 17, 2007	Sep 17, 2007		
	Sample Location					
	Sample Description	TMF 5A Alfalfa	TMF 5A Violet Wheatgrass	TMF 5A Tcklegrass		
	Matrix	Tissue	Tissue	Tissue		
Analyte	Units	Results	Results	Results	Detection Limit	
<b>Metals Total</b>						
Aluminum	Total (dry weight)	ug/g	20	11	12	1
Antimony	Total (dry weight)	ug/g	<0.5	<0.5	<0.5	0.5
Arsenic	Total (dry weight)	ug/g	<0.2	<0.2	<0.2	0.2
Barium	Total (dry weight)	ug/g	21.1	12.6	7.15	0.03
Beryllium	Total (dry weight)	ug/g	<0.01	<0.01	<0.01	0.01
Bismuth	Total (dry weight)	ug/g	<0.5	<0.5	<0.5	0.5
Cadmium	Total (dry weight)	ug/g	0.2	<0.05	0.06	0.05
Calcium	Total (dry weight)	ug/g	38400	2460	2140	2
Chromium	Total (dry weight)	ug/g	0.065	0.34	0.27	0.04
Cobalt	Total (dry weight)	ug/g	0.2	<0.05	<0.05	0.05
Copper	Total (dry weight)	ug/g	7.85	2.1	3.1	0.05
Iron	Total (dry weight)	ug/g	53.3	22	29	1
Lead	Total (dry weight)	ug/g	1.0	0.52	1.5	0.3
Lithium	Total (dry weight)	ug/g	2.8	0.4	0.50	0.1
Magnesium	Total (dry weight)	ug/g	1860	654	651	1
Manganese	Total (dry weight)	ug/g	34.0	20.1	30.0	0.3
Molybdenum	Total (dry weight)	ug/g	1.5	0.83	0.93	0.05
Nickel	Total (dry weight)	ug/g	0.89	0.3	0.53	0.1
Phosphorus	Total (dry weight)	ug/g	1760	1440	1310	1
Potassium	Total (dry weight)	ug/g	9830	7760	6850	5
Selenium	Total (dry weight)	ug/g	<0.2	<0.2	<0.2	0.3
Silver	Total (dry weight)	ug/g	<0.1	<0.1	<0.1	0.2
Sodium	Total (dry weight)	ug/g	78.8	6.6	8.5	1
Strontium	Total (dry weight)	ug/g	95.9	8.64	8.03	0.02
Titanium	Total (dry weight)	ug/g	0.3	0.2	0.3	0.05
Vanadium	Total (dry weight)	ug/g	<0.1	<0.1	<0.1	0.1
Zinc	Total (dry weight)	ug/g	37.1	20.0	21.8	0.1
Zirconium	Total (dry weight)	ug/g	<0.05	0.05	<0.05	0.05
Thallium	Total (dry weight)	ug/g	1.4	1.5	1.2	0.3

## Analytical Report

Bill To: Access Mining Consultants Ltd.	Project:	Lot ID: <b>574602</b>
Report To: Access Mining Consultants Ltd.	ID: COM-01	Control Number:
# 3 Calcite Business Centre	Name: Sa Dena Hes Reveg	Date Received: Sep 19, 2007
151 Industrial Road	Location: Sa Dena Hes	Date Reported: Sep 26, 2007
Whitehorse, YT, Canada	LSD:	Report Number: 1049669
Y1A 2V3	P.O.:	
Attn: Scott Keesey	Acct code: COM-07-01	
Sampled By: Stu Withers		
Company: LES		

		Reference Number	574602-10	574602-11	574602-12	
		Sample Date	Sep 17, 2007	Sep 17, 2007	Sep 17, 2007	
		Sample Location				
		Sample Description	TMF Willow Leaves	TMF Willow Stems	TMF Balsam Poplar Leaves	
		Matrix	Tissue	Tissue	Tissue	
Analyte	Units	Results	Results	Results	Detection Limit	
<b>Metals Total</b>						
Aluminum	Total (dry weight)	ug/g	75.6	29	38	1
Antimony	Total (dry weight)	ug/g	<0.5	<0.5	<0.5	0.5
Arsenic	Total (dry weight)	ug/g	0.2	<0.2	0.2	0.2
Barium	Total (dry weight)	ug/g	9.74	6.01	7.21	0.03
Beryllium	Total (dry weight)	ug/g	<0.01	<0.01	<0.01	0.01
Bismuth	Total (dry weight)	ug/g	<0.5	<0.5	<0.5	0.5
Cadmium	Total (dry weight)	ug/g	43.0	15.1	93.6	0.05
Calcium	Total (dry weight)	ug/g	37600	7570	24000	2
Chromium	Total (dry weight)	ug/g	0.20	0.12	<0.03	0.04
Cobalt	Total (dry weight)	ug/g	1.2	0.1	0.65	0.05
Copper	Total (dry weight)	ug/g	4.8	4.2	1.6	0.05
Iron	Total (dry weight)	ug/g	262	79.3	28	1
Lead	Total (dry weight)	ug/g	53.5	20.9	6.11	0.3
Lithium	Total (dry weight)	ug/g	4.0	0.90	3.5	0.1
Magnesium	Total (dry weight)	ug/g	2120	535	1810	1
Manganese	Total (dry weight)	ug/g	416	65.3	172	0.3
Molybdenum	Total (dry weight)	ug/g	1.2	0.2	0.3	0.05
Nickel	Total (dry weight)	ug/g	2.9	0.71	1.2	0.1
Phosphorus	Total (dry weight)	ug/g	613	835	455	1
Potassium	Total (dry weight)	ug/g	7250	3450	7380	5
Selenium	Total (dry weight)	ug/g	4.6	1.9	2.0	0.3
Silver	Total (dry weight)	ug/g	<0.1	<0.1	<0.1	0.2
Sodium	Total (dry weight)	ug/g	12	6.6	6.5	1
Strontium	Total (dry weight)	ug/g	55.5	17.9	36.2	0.02
Titanium	Total (dry weight)	ug/g	3.9	1.2	0.4	0.05
Vanadium	Total (dry weight)	ug/g	<0.1	<0.1	<0.1	0.1
Zinc	Total (dry weight)	ug/g	2380	436	2130	0.1
Zirconium	Total (dry weight)	ug/g	0.06	<0.05	<0.05	0.05
Thallium	Total (dry weight)	ug/g	1.2	1.6	1.5	0.3

## Analytical Report

Bill To: Access Mining Consultants Ltd. Report To: Access Mining Consultants Ltd. # 3 Calcite Business Centre 151 Industrial Road Whitehorse, YT, Canada Y1A 2V3 Attn: Scott Keesey Sampled By: Stu Withers Company: LES	Project: ID: COM-01 Name: Sa Dena Hes Reveg Location: Sa Dena Hes LSD: P.O.: Acct code: COM-07-01	Lot ID: <b>574602</b> Control Number: Date Received: Sep 19, 2007 Date Reported: Sep 26, 2007 Report Number: 1049669
--	---	--


		Reference Number	574602-13	574602-14	574602-15	
		Sample Date	Sep 17, 2007	Sep 17, 2007	Sep 17, 2007	
		Sample Location				
		Sample Description	TMF Balsam Poplar	Control Willow	Control Willow	
		Matrix	Stems Tissue	Leaves Tissue	Stems Tissue	
Analyte	Units	Results	Results	Results	Detection Limit	
<b>Metals Total</b>						
Aluminum	Total (dry weight)	ug/g	16	32	20	1
Antimony	Total (dry weight)	ug/g	<0.5	<0.5	<0.5	0.5
Arsenic	Total (dry weight)	ug/g	<0.2	<0.2	<0.2	0.2
Barium	Total (dry weight)	ug/g	16.8	113	59.1	0.03
Beryllium	Total (dry weight)	ug/g	<0.01	<0.01	<0.01	0.01
Bismuth	Total (dry weight)	ug/g	<0.5	<0.5	<0.5	0.5
Cadmium	Total (dry weight)	ug/g	15.3	39.0	14.2	0.05
Calcium	Total (dry weight)	ug/g	13500	25600	6840	2
Chromium	Total (dry weight)	ug/g	0.04	<0.03	0.04	0.04
Cobalt	Total (dry weight)	ug/g	0.3	2.6	0.2	0.05
Copper	Total (dry weight)	ug/g	3.4	3.8	5.90	0.05
Iron	Total (dry weight)	ug/g	17	38	24	1
Lead	Total (dry weight)	ug/g	8.14	<0.2	0.72	0.3
Lithium	Total (dry weight)	ug/g	1.2	2.0	0.73	0.1
Magnesium	Total (dry weight)	ug/g	692	1090	600	1
Manganese	Total (dry weight)	ug/g	19.9	450	65.0	0.3
Molybdenum	Total (dry weight)	ug/g	0.07	0.70	0.2	0.05
Nickel	Total (dry weight)	ug/g	0.93	5.98	2.6	0.1
Phosphorus	Total (dry weight)	ug/g	1070	2440	1300	1
Potassium	Total (dry weight)	ug/g	6030	12500	4220	5
Selenium	Total (dry weight)	ug/g	0.77	0.3	<0.2	0.3
Silver	Total (dry weight)	ug/g	<0.1	<0.1	<0.1	0.2
Sodium	Total (dry weight)	ug/g	4	6.1	5.2	1
Strontium	Total (dry weight)	ug/g	39.1	103	28.8	0.02
Titanium	Total (dry weight)	ug/g	0.2	0.3	0.2	0.05
Vanadium	Total (dry weight)	ug/g	<0.1	<0.1	<0.1	0.1
Zinc	Total (dry weight)	ug/g	267	310	112	0.1
Zirconium	Total (dry weight)	ug/g	<0.05	<0.05	<0.05	0.05
Thallium	Total (dry weight)	ug/g	1.3	1.3	0.80	0.3

**Analytical Report**

Bill To: Access Mining Consultants Ltd.	Project:	Lot ID: <b>574602</b>
Report To: Access Mining Consultants Ltd.	ID: COM-01	Control Number:
# 3 Calcite Business Centre	Name: Sa Dena Hes Reveg	Date Received: Sep 19, 2007
151 Industrial Road	Location: Sa Dena Hes	Date Reported: Sep 26, 2007
Whitehorse, YT, Canada	LSD:	Report Number: 1049669
Y1A 2V3	P.O.:	
Attn: Scott Keesey	Acct code: COM-07-01	
Sampled By: Stu Withers		
Company: LES		

<b>Reference Number</b>	574602-16	574602-17
<b>Sample Date</b>	Sep 17, 2007	Sep 17, 2007
<b>Sample Location</b>		
<b>Sample Description</b>	Control Balsam Poplar Leaves Tissue	Control Balsam Poplar Stems Tissue
<b>Matrix</b>		

Analyte	Units	Results	Results	Results	Detection Limit
<b>Metals Total</b>					
Aluminum	Total (dry weight)	ug/g	27	19	1
Antimony	Total (dry weight)	ug/g	<0.5	<0.50	0.5
Arsenic	Total (dry weight)	ug/g	<0.2	<0.2	0.2
Barium	Total (dry weight)	ug/g	56.7	40.2	0.03
Beryllium	Total (dry weight)	ug/g	<0.01	<0.01	0.01
Bismuth	Total (dry weight)	ug/g	<0.5	0.74	0.5
Cadmium	Total (dry weight)	ug/g	20.5	7.84	0.05
Calcium	Total (dry weight)	ug/g	37200	16800	2
Chromium	Total (dry weight)	ug/g	0.04	0.03	0.04
Cobalt	Total (dry weight)	ug/g	2.3	0.2	0.05
Copper	Total (dry weight)	ug/g	3.1	3.5	0.05
Iron	Total (dry weight)	ug/g	36	12	1
Lead	Total (dry weight)	ug/g	0.5	0.4	0.3
Lithium	Total (dry weight)	ug/g	2.6	1.3	0.1
Magnesium	Total (dry weight)	ug/g	1670	708	1
Manganese	Total (dry weight)	ug/g	203	37.9	0.3
Molybdenum	Total (dry weight)	ug/g	1.4	0.05	0.05
Nickel	Total (dry weight)	ug/g	1.7	0.57	0.1
Phosphorus	Total (dry weight)	ug/g	4090	974	1
Potassium	Total (dry weight)	ug/g	15700	4540	5
Selenium	Total (dry weight)	ug/g	<0.2	<0.2	0.3
Silver	Total (dry weight)	ug/g	<0.1	<0.1	0.2
Sodium	Total (dry weight)	ug/g	6.5	5.4	1
Strontium	Total (dry weight)	ug/g	102	61.2	0.02
Titanium	Total (dry weight)	ug/g	0.2	0.09	0.05
Vanadium	Total (dry weight)	ug/g	<0.1	<0.1	0.1
Zinc	Total (dry weight)	ug/g	839	166	0.1
Zirconium	Total (dry weight)	ug/g	<0.05	<0.05	0.05
Thallium	Total (dry weight)	ug/g	1.5	1.3	0.3

Approved by:   
Walter Brandl  
Operations Manager - Surrey

## Quality Control

Bill To: Access Mining Consultants Ltd.	Project:	
Report To: Access Mining Consultants Ltd.	ID: COM-01	
# 3 Calcite Business Centre	Name: Sa Dena Hes Reveg	
151 Industrial Road	Location: Sa Dena Hes	
Whitehorse, YT, Canada	LSD:	
Y1A 2V3	P.O.:	
Attn: Scott Keesey	Acct code: COM-07-01	
Sampled By: Stu Withers		
Company: LES		

Lot ID: **574602**  
 Control Number:  
 Date Received: Sep 19, 2007  
 Date Reported: Sep 26, 2007  
 Report Number: 1049669

### Metals Total

Blanks	Units	Measured	Mean	Lower Limit	Upper Limit	Passed QC
Aluminum	ug/g	<1	0.000	-0.024	0.024	yes
Antimony	ug/g	<0.5	0.000	-0.012	0.012	yes
Arsenic	ug/g	<0.2	0.000	-0.009	0.009	yes
Barium	ug/g	<0.02	0.000	-0.001	0.001	yes
Beryllium	ug/g	<0.02	0.000	-0.000	0.000	yes
Bismuth	ug/g	<0.5	0.000	-0.018	0.018	yes
Cadmium	ug/g	<0.05	0.000	-0.001	0.001	yes
Calcium	ug/g	<1	0.070	-0.050	0.190	yes
Chromium	ug/g	<0.03	0.000	-0.001	0.001	yes
Cobalt	ug/g	<0.05	0.000	-0.001	0.001	yes
Copper	ug/g	<0.05	0.000	-0.003	0.003	yes
Iron	ug/g	<1	0.020	-0.190	0.230	yes
Lead	ug/g	<0.2	0.000	-0.030	0.030	yes
Lithium	ug/g	<0.1	0.000	-0.009	0.009	yes
Magnesium	ug/g	<1	0.000	-0.300	0.300	yes
Manganese	ug/g	<0.2	0.000	-0.003	0.003	yes
Molybdenum	ug/g	<0.05	0.000	-0.001	0.001	yes
Nickel	ug/g	<0.1	0.000	-0.003	0.003	yes
Phosphorus	ug/g	<0.5	0.000	-0.036	0.036	yes
Potassium	ug/g	6	0.000	-0.600	0.600	yes
Selenium	ug/g	<0.2	0.000	-0.021	0.021	yes
Silicon	ug/g	<2	0.000	-0.021	0.021	yes
Silver	ug/g	<0.2	0.000	-0.030	0.030	yes
Sodium	ug/g	3	0.000	-0.300	0.300	yes
Strontium	ug/g	<0.02	0.000	-0.000	0.000	yes
Sulfur	ug/g	5.0	0.000	-0.300	0.300	yes
Tin	ug/g	<0.2	0.010	-0.005	0.025	yes
Titanium	ug/g	<0.05	0.000	-0.003	0.003	yes
Uranium	ug/g	<2	0.000	-0.060	0.060	yes
Vanadium	ug/g	<0.2	0.000	-0.003	0.003	yes
Zinc	ug/g	0.1	0.000	-0.010	0.010	yes
Zirconium	ug/g	<0.05	0.000	-0.002	0.002	yes
Thallium	ug/g	<0.2	0.000	-0.006	0.006	yes

Material Used: Metals Blank - solids  
 Date Acquired: September 22, 2007  
 Acquired By: Kelly Restiaux

Replicates	Units	Replicate1	Replicate2	% RSD Criteria	Absolute Criteria	Passed QC
Aluminum	ug/g	29	27	30.000	10.000	yes
Antimony	ug/g	<0.5	0.60	30.000	0.500	yes
Arsenic	ug/g	<0.2	<0.2	30.000	0.500	yes
Barium	ug/g	6.01	5.46	30.000	2.500	yes
Beryllium	ug/g	<0.02	<0.01	30.000	0.250	yes

## Quality Control

Bill To: Access Mining Consultants Ltd. Project:  
 Report To: Access Mining Consultants Ltd. ID: COM-01  
 # 3 Calcite Business Centre Name: Sa Dena Hes Reveg  
 151 Industrial Road Location: Sa Dena Hes  
 Whitehorse, YT, Canada LSD:  
 Y1A 2V3 P.O.:  
 Attn: Scott Keesey Acct code: COM-07-01  
 Sampled By: Stu Withers  
 Company: LES

Lot ID: **574602**  
 Control Number:  
 Date Received: Sep 19, 2007  
 Date Reported: Sep 26, 2007  
 Report Number: 1049669

### Metals Total - Continued

Replicates	Units	Replicate1	Replicate2	% RSD Criteria	Absolute Criteria	Passed QC
Bismuth	ug/g	<0.5	0.50	30.000	4.000	yes
Cadmium	ug/g	15.1	14.2	30.000	0.025	yes
Calcium	ug/g	7570	6940	30.000	200.000	yes
Chromium	ug/g	0.44	0.43	30.000	1.000	yes
Cobalt	ug/g	0.1	0.1	30.000	0.250	yes
Copper	ug/g	4.2	4.0	30.000	2.000	yes
Iron	ug/g	79.3	70.9	30.000	25.000	yes
Lead	ug/g	20.9	19.6	30.000	0.250	yes
Lithium	ug/g	0.90	0.80	30.000	2.500	yes
Magnesium	ug/g	644	626	30.000	200.000	yes
Manganese	ug/g	65.3	60.4	30.000	10.000	yes
Molybdenum	ug/g	4.6	4.4	30.000	2.000	yes
Nickel	ug/g	1.6	1.6	30.000	1.000	yes
Phosphorus	ug/g	835	785	30.000	50.000	yes
Potassium	ug/g	7140	7020	30.000	400.000	yes
Selenium	ug/g	1.9	1.8	30.000	0.500	yes
Silicon	ug/g	568	424	30.000	100.000	yes
Silver	ug/g	<0.2	<0.1	30.000	0.250	yes
Sodium	ug/g	6.6	6.4	30.000	400.000	yes
Strontium	ug/g	3.38	3.25	30.000	2.000	yes
Sulfur	ug/g	780	734	30.000	100.000	yes
Tin	ug/g	<0.2	<0.2	30.000	2.500	yes
Titanium	ug/g	1.2	1.1	30.000	1.250	yes
Uranium	ug/g	<2	<2	30.000	1.000	yes
Vanadium	ug/g	<0.2	<0.1	30.000	0.250	yes
Zinc	ug/g	436	408	30.000	2.500	yes
Zirconium	ug/g	<0.05	0.06	30.000	2.500	yes
Thallium	ug/g	1.6	1.5	19.980	0.050	yes

Material Used: Metals Int. Duplicate - solids

Date Acquired: September 22, 2007

Acquired By: Kelly Restiaux

Control Sample	Units	Measured	Mean	Lower Limit	Upper Limit	Passed QC
Aluminum	ug/g	145	149.000	113.000	185.000	yes
Arsenic	ug/g	<0.2	0.300	-0.180	0.780	yes
Barium	ug/g	115	112.000	96.400	127.600	yes
Cadmium	ug/g	<0.05	0.060	-0.000	0.120	yes
Calcium	ug/g	15000	16000.000	13624.000	18376.000	yes
Copper	ug/g	3.6	3.400	2.020	4.780	yes
Iron	ug/g	178	187.000	151.000	223.000	yes
Lead	ug/g	0.89	0.830	-0.070	1.730	yes
Magnesium	ug/g	4030	3980.000	3539.000	4421.000	yes
Manganese	ug/g	95.8	98.000	92.000	104.000	yes

### Quality Control

Bill To: Access Mining Consultants Ltd. Project:  
 Report To: Access Mining Consultants Ltd. ID: COM-01  
 # 3 Calcite Business Centre Name: Sa Dena Hes Reveg  
 151 Industrial Road Location: Sa Dena Hes  
 Whitehorse, YT, Canada LSD:  
 Y1A 2V3 P.O.:  
 Attn: Scott Keesey Acct code: COM-07-01  
 Sampled By: Stu Withers  
 Company: LES

Lot ID: **574602**  
 Control Number:  
 Date Received: Sep 19, 2007  
 Date Reported: Sep 26, 2007  
 Report Number: 1049669

#### Metals Total - Continued

Control Sample	Units	Measured	Mean	Lower Limit	Upper Limit	Passed QC
Nickel	ug/g	0.4	0.710	-0.040	1.460	yes
Phosphorus	ug/g	1360	1440.000	1239.000	1641.000	yes
Potassium	ug/g	23200	23900.000	16670.000	31130.000	yes
Selenium	ug/g	<0.2	0.300	0.030	0.570	yes
Sodium	ug/g	30	33.000	14.100	51.900	yes
Strontium	ug/g	53.6	57.000	46.200	67.800	yes
Vanadium	ug/g	<0.1	0.270	0.030	0.510	yes
Zinc	ug/g	17.0	18.100	16.000	20.200	yes

Material Used: S0167 NIST 1547 - metals in peach leaves  
 Date Acquired: September 22, 2007  
 Acquired By: Kelly Restiaux

**Methodology and Notes**

Bill To: Access Mining Consultants Ltd.	Project:	Lot ID: <b>574602</b>
Report To: Access Mining Consultants Ltd.	ID: COM-01	Control Number:
# 3 Calcite Business Centre	Name: Sa Dena Hes Reveg	Date Received: Sep 19, 2007
151 Industrial Road	Location: Sa Dena Hes	Date Reported: Sep 26, 2007
Whitehorse, YT, Canada	LSD:	Report Number: 1049669
Y1A 2V3	P.O.:	
Attn: Scott Keesey	Acct code: COM-07-01	
Sampled By: Stu Withers		
Company: LES		

**Method of Analysis**

Method Name	Reference	Method	Date Analysis Started	Location
Metals (Total) dry weight	US EPA	* Metals & Trace Elements by ICP-AES, 6010B	22-Sep-07	BTG Surrey

*\* Bodycote method(s) based on reference method*

**References**

US EPA US Environmental Protection Agency Test Methods

**Comments:**

Please direct any inquiries regarding this report to our Client Services group.

Results relate only to samples as submitted.

The test report shall not be reproduced except in full, without the written approval of the laboratory.



Bill To: Access Mining Consultants Ltd.	Project:	Lot ID: <b>574606</b>
Report To: Access Mining Consultants Ltd.	ID: COM-01	Approval Status: Approved
# 3 Calcite Business Centre	Name: Sa Dena Hes Reveg	Invoice Frequency: by Lot
151 Industrial Road	Location: Sa Dena Hes	COD Status:
Whitehorse, YT, Canada	LSD:	Control Number:
Y1A 2V3	P.O.:	Date Received: Sep 19, 2007
Attn: Scott Keesey	Acct code: COM-07-01	Date Reported: Oct 15, 2007
Sampled By: Stu Withers		Report Number: 1049675
Company: LES		

Contact	Company	Address
Dan Cornett	Access Mining Consultants Ltd.	# 3 Calcite Business Centre, 151 Industrial Road Whitehorse, YT Y1A 2V3 Phone: (867) 668-6463 Fax: (867) 667-6680 Email: dan@accessconsulting.ca

Copies	Delivery	Format
1	Email - Single Report	PDF
1	Email - Single Report	Standard Crosstab

Contact	Company	Address
Scott Keesey	Access Mining Consultants Ltd.	# 3 Calcite Business Centre, 151 Industrial Road Whitehorse, YT Y1A 2V3 Phone: (867) 668-6463 Fax: (867) 667-6680 Email: scott@accessconsulting.ca

Copies	Delivery	Format
M 1	Post	
1	Email - Single Report	PDF
1	Email - Single Report	Standard Crosstab

\_\_\_\_\_ PAGES IN THIS TRANSMISSION

**Notes To Clients:**

**Reports associated with this Lot**

<u>Id/Format/Report Date</u>	<u>Id/Format/Report Date</u>	<u>Id/Format/Report Date</u>
------------------------------	------------------------------	------------------------------

The information contained on this and all other pages transmitted, is intended for the addressee only and is considered confidential. If the reader is not the intended recipient, you are hereby notified that any use, dissemination, distribution or copy of this transmission is strictly prohibited. If you receive this transmission by error, or if this transmission is not satisfactory, please notify us by telephone.

**Sample Custody**

Bill To: Access Mining Consultants Ltd. Project:  
 Report To: Access Mining Consultants Ltd. ID: COM-01  
 # 3 Calcite Business Centre Name: Sa Dena Hes Reveg  
 151 Industrial Road Location: Sa Dena Hes  
 Whitehorse, YT, Canada LSD:  
 Y1A 2V3 P.O.:  
 Attn: Scott Keesey Acct code: COM-07-01  
 Sampled By: Stu Withers  
 Company: LES

Lot ID: **574606**  
 Control Number:  
 Date Received: Sep 19, 2007  
 Date Reported: Oct 15, 2007  
 Report Number: 1049675

**Sample Disposal Date: November 14, 2007**

All samples will be stored until this date unless other instructions are received. Please indicate other requirements below and return this form to the address or fax number on the bottom of this page.

Extend Sample Storage Until \_\_\_\_\_ (MM/DD/YY)

The following charges apply to extended sample storage:

Storage for 1 to 5 samples per month	\$ 10.00
Storage for 6 to 20 samples per month	\$ 15.00
Storage for 21 to 50 samples per month	\$ 30.00
Storage for 51 to 200 samples per month	\$ 60.00
Storage for more than 200 samples per month	\$ 110.00

Return Sample, collect, to the address below via:

Greyhound

Loomis

Purolator

Other (specify) \_\_\_\_\_

Name \_\_\_\_\_

Company \_\_\_\_\_

Address \_\_\_\_\_

Phone \_\_\_\_\_

Fax \_\_\_\_\_

Signature \_\_\_\_\_

## Analytical Report

Bill To: Access Mining Consultants Ltd. Project:  
 Report To: Access Mining Consultants Ltd. ID: COM-01  
 # 3 Calcite Business Centre Name: Sa Dena Hes Reveg  
 151 Industrial Road Location: Sa Dena Hes  
 Whitehorse, YT, Canada LSD:  
 Y1A 2V3 P.O.:  
 Attn: Scott Keesey Acct code: COM-07-01  
 Sampled By: Stu Withers  
 Company: LES

Lot ID: **574606**  
 Control Number:  
 Date Received: Sep 19, 2007  
 Date Reported: Oct 15, 2007  
 Report Number: 1049675

			Reference Number	574606-1	574606-2	574606-3	
			Sample Date	Sep 17, 2007	Sep 17, 2007	Sep 17, 2007	
			Sample Location				
			Sample Description	Site 1-1	Site 1-2	Site 1-3	
			Matrix	Soil	Soil	Soil	
Analyte		Units	Results	Results	Results	Detection Limit	
<b>Available Nutrients</b>							
Nitrate - N	Available	mg/kg	<1	<1	<1	1	
Phosphorus	Available	mg/kg	28	10	25	5	
Potassium	Available	mg/kg	30	20	30	10	
Sulfate-S	Available	mg/kg	2	1	2	1	
Ammonium - N	Available-dry basis	mg/kg	0.3	0.4	0.5	0.3	
<b>Classification</b>							
Cation Exchange Capacity		meq/100g	4.67	5.33	4.63	.007	
C:N Ratio			5	<0.9	7		
Organic Matter		%	0.63	<0.15	1.05	.15	
Carbon	Total Organic	% dry weight	0.31	<0.05	0.52	0.05	
Nitrogen	Total	% dry weight	0.06	0.06	0.07	0.02	
<b>Metals Strong Acid Digestion</b>							
Aluminum	Strong Acid Extractable	ug/g	2640	2320	4260	1	
Antimony	Strong Acid Extractable	ug/g	6.1	7.7	6.0	0.5	
Arsenic	Strong Acid Extractable	ug/g	21.2	25.7	20.8	0.2	
Barium	Strong Acid Extractable	ug/g	129	144	153	0.03	
Beryllium	Strong Acid Extractable	ug/g	0.34	0.30	0.43	0.01	
Bismuth	Strong Acid Extractable	ug/g	0.8	0.8	0.5	0.5	
Cadmium	Strong Acid Extractable	ug/g	2.0	2.3	1.8	0.05	
Calcium	Strong Acid Extractable	ug/g	21600	28200	18500	2	
Chromium	Strong Acid Extractable	ug/g	4.96	4.08	7.22	0.04	
Cobalt	Strong Acid Extractable	ug/g	4.4	5.06	5.31	0.05	
Copper	Strong Acid Extractable	ug/g	25.6	29.0	27.0	0.05	
Iron	Strong Acid Extractable	ug/g	13600	14400	16800	1	
Lead	Strong Acid Extractable	ug/g	14.5	11.5	14.1	0.3	
Lithium	Strong Acid Extractable	ug/g	4.7	5.9	6.6	0.1	
Magnesium	Strong Acid Extractable	ug/g	9940	9730	9640	1	
Manganese	Strong Acid Extractable	ug/g	183	189	224	0.3	
Mercury	Strong Acid Extractable	ug/g	0.115	0.109	0.112	0.003	
Molybdenum	Strong Acid Extractable	ug/g	7.58	8.54	7.40	0.05	
Nickel	Strong Acid Extractable	ug/g	41.2	43.0	46.3	0.1	
Phosphorus	Strong Acid Extractable	ug/g	788	919	938	0.5	
Potassium	Strong Acid Extractable	ug/g	556	470	526	5	
Selenium	Strong Acid Extractable	ug/g	<0.3	<0.3	<0.3	0.3	
Silicon	Strong Acid Extractable	ug/g	47	61	228	1	
Silver	Strong Acid Extractable	ug/g	<0.2	<0.2	<0.2	0.2	
Sodium	Strong Acid Extractable	ug/g	24	20	32	1	
Strontium	Strong Acid Extractable	ug/g	26.1	44.1	23.5	0.02	

## Analytical Report

Bill To: Access Mining Consultants Ltd.	Project:	
Report To: Access Mining Consultants Ltd.	ID: COM-01	Lot ID: <b>574606</b>
# 3 Calcite Business Centre	Name: Sa Dena Hes Reveg	Control Number:
151 Industrial Road	Location: Sa Dena Hes	Date Received: Sep 19, 2007
Whitehorse, YT, Canada	LSD:	Date Reported: Oct 15, 2007
Y1A 2V3	P.O.:	Report Number: 1049675
Attn: Scott Keesey	Acct code: COM-07-01	
Sampled By: Stu Withers		
Company: LES		

	Reference Number	574606-1	574606-2	574606-3		
	Sample Date	Sep 17, 2007	Sep 17, 2007	Sep 17, 2007		
	Sample Location					
	Sample Description	Site 1-1	Site 1-2	Site 1-3		
	Matrix	Soil	Soil	Soil		
Analyte	Units	Results	Results	Results	Detection Limit	
<b>Metals Strong Acid Digestion - Continued</b>						
Thallium	Strong Acid Extractable	ug/g	0.6	0.5	0.5	0.3
Tin	Strong Acid Extractable	ug/g	0.2	0.2	0.2	0.2
Titanium	Strong Acid Extractable	ug/g	20.5	9.25	23.6	0.05
Vanadium	Strong Acid Extractable	ug/g	24.2	24.0	31.7	0.1
Zinc	Strong Acid Extractable	ug/g	184	190	179	0.1
Zirconium	Strong Acid Extractable	ug/g	7.11	8.12	2.5	0.05
<b>Salinity</b>						
Electrical Conductivity	Saturated Paste	dS/m at 25 C	0.29	0.24	0.24	0.01
<b>Soil Acidity</b>						
pH	1:2 Soil:Water	pH	8.4	8.7	8.1	0.5

**Analytical Report**

Bill To: Access Mining Consultants Ltd. Project:  
 Report To: Access Mining Consultants Ltd. ID: COM-01  
 # 3 Calcite Business Centre Name: Sa Dena Hes Reveg  
 151 Industrial Road Location: Sa Dena Hes  
 Whitehorse, YT, Canada LSD:  
 Y1A 2V3 P.O.:  
 Attn: Scott Keesey Acct code: COM-07-01  
 Sampled By: Stu Withers  
 Company: LES

Lot ID: **574606**  
 Control Number:  
 Date Received: Sep 19, 2007  
 Date Reported: Oct 15, 2007  
 Report Number: 1049675

			Reference Number	574606-4	574606-5	574606-6	
			Sample Date	Sep 17, 2007	Sep 17, 2007	Sep 17, 2007	
			Sample Location				
			Sample Description	Site 1-4	TMF Site 5A-1	TMF Site 5A-2	
			Matrix	Soil	Soil	Soil	
Analyte		Units	Results	Results	Results	Detection Limit	
<b>Available Nutrients</b>							
Nitrate - N	Available	mg/kg	<1	<1	<1	1	
Phosphorus	Available	mg/kg	17	36	<5	5	
Potassium	Available	mg/kg	30	80	30	10	
Sulfate-S	Available	mg/kg	2	15	26	1	
Ammonium - N	Available-dry basis	mg/kg	0.4	0.4	0.4	0.3	
<b>Classification</b>							
Cation Exchange Capacity		meq/100g	7.43	7.41	5.20	.007	
C:N Ratio			4	4	1		
Organic Matter		%	0.63	0.62	0.20	.15	
Carbon	Total Organic	% dry weight	0.32	0.31	0.10	0.05	
Nitrogen	Total	% dry weight	0.08	0.08	0.07	0.02	
<b>Metals Strong Acid Digestion</b>							
Aluminum	Strong Acid Extractable	ug/g	4120	17200	18000	1	
Antimony	Strong Acid Extractable	ug/g	7.0	2.4	1.7	0.5	
Arsenic	Strong Acid Extractable	ug/g	23.2	10.8	8.2	0.2	
Barium	Strong Acid Extractable	ug/g	144	108	141	0.03	
Beryllium	Strong Acid Extractable	ug/g	0.44	0.62	0.61	0.01	
Bismuth	Strong Acid Extractable	ug/g	<0.5	1.2	1.2	0.5	
Cadmium	Strong Acid Extractable	ug/g	2.1	0.91	0.63	0.05	
Calcium	Strong Acid Extractable	ug/g	4380	34400	39400	2	
Chromium	Strong Acid Extractable	ug/g	7.67	19.4	19.4	0.04	
Cobalt	Strong Acid Extractable	ug/g	5.70	12.6	12.5	0.05	
Copper	Strong Acid Extractable	ug/g	26.7	29.0	27.8	0.05	
Iron	Strong Acid Extractable	ug/g	18000	35600	36000	1	
Lead	Strong Acid Extractable	ug/g	15.6	48.8	51.7	0.3	
Lithium	Strong Acid Extractable	ug/g	4.8	43.6	46.2	0.1	
Magnesium	Strong Acid Extractable	ug/g	2380	12400	12600	1	
Manganese	Strong Acid Extractable	ug/g	236	369	367	0.3	
Mercury	Strong Acid Extractable	ug/g	0.082	0.023	0.024	0.003	
Molybdenum	Strong Acid Extractable	ug/g	8.38	1.2	0.75	0.05	
Nickel	Strong Acid Extractable	ug/g	50.3	30.2	29.7	0.1	
Phosphorus	Strong Acid Extractable	ug/g	856	887	664	0.5	
Potassium	Strong Acid Extractable	ug/g	516	774	579	5	
Selenium	Strong Acid Extractable	ug/g	<0.3	<0.3	<0.3	0.3	
Silicon	Strong Acid Extractable	ug/g	43	167	160	1	
Silver	Strong Acid Extractable	ug/g	<0.2	<0.2	<0.2	0.2	
Sodium	Strong Acid Extractable	ug/g	20	54	60	1	
Strontium	Strong Acid Extractable	ug/g	11.3	129	142	0.02	

## Analytical Report

Bill To: Access Mining Consultants Ltd.	Project:	Lot ID: <b>574606</b>
Report To: Access Mining Consultants Ltd.	ID: COM-01	Control Number:
# 3 Calcite Business Centre	Name: Sa Dena Hes Reveg	Date Received: Sep 19, 2007
151 Industrial Road	Location: Sa Dena Hes	Date Reported: Oct 15, 2007
Whitehorse, YT, Canada	LSD:	Report Number: 1049675
Y1A 2V3	P.O.:	
Attn: Scott Keesey	Acct code: COM-07-01	
Sampled By: Stu Withers		
Company: LES		

		Reference Number	574606-4	574606-5	574606-6	
		Sample Date	Sep 17, 2007	Sep 17, 2007	Sep 17, 2007	
		Sample Location				
		Sample Description	Site 1-4	TMF Site 5A-1	TMF Site 5A-2	
		Matrix	Soil	Soil	Soil	
Analyte	Units	Results	Results	Results	Detection Limit	
<b>Metals Strong Acid Digestion - Continued</b>						
Thallium	Strong Acid Extractable	ug/g	0.4	0.6	0.4	0.3
Tin	Strong Acid Extractable	ug/g	0.4	0.4	0.5	0.2
Titanium	Strong Acid Extractable	ug/g	24.6	109	99.9	0.05
Vanadium	Strong Acid Extractable	ug/g	30.3	26.2	23.8	0.1
Zinc	Strong Acid Extractable	ug/g	206	156	128	0.1
Zirconium	Strong Acid Extractable	ug/g	5.0	5.21	7.67	0.05
<b>Salinity</b>						
Electrical Conductivity	Saturated Paste	dS/m at 25 C	0.19	0.64	0.83	0.01
<b>Soil Acidity</b>						
pH	1:2 Soil:Water	pH	8.0	8.3	8.2	0.5

## Analytical Report

Bill To: Access Mining Consultants Ltd.	Project: Access Mining Consultants Ltd.	Lot ID: <b>574606</b>
Report To: Access Mining Consultants Ltd.	ID: COM-01	Control Number:
# 3 Calcite Business Centre	Name: Sa Dena Hes Reveg	Date Received: Sep 19, 2007
151 Industrial Road	Location: Sa Dena Hes	Date Reported: Oct 15, 2007
Whitehorse, YT, Canada	LSD:	Report Number: 1049675
Y1A 2V3	P.O.:	
Attn: Scott Keesey	Acct code: COM-07-01	
Sampled By: Stu Withers		
Company: LES		

Reference Number	574606-4	574606-7	574606-9
Sample Date	Sep 17, 2007	Sep 17, 2007	Sep 17, 2007
Sample Location			
Sample Description	Site 1-4	TMF Site 5A-3	TMF Balsam Poplar
Matrix	Soil	Soil	Soil Soil

Analyte	Units	Results	Results	Results	Detection Limit
<b>Physical and Aggregate Properties</b>					
Texture		Loamy Sand	Loamy Sand	Sandy Loam	
Sand	Soil Texture % by weight	80.0	78.0	72.0	
Silt	Soil Texture % by weight	14.6	15.2	26.0	
Clay	Soil Texture % by weight	5.4	6.8	2.0	

## Analytical Report

Bill To: Access Mining Consultants Ltd. Report To: Access Mining Consultants Ltd. # 3 Calcite Business Centre 151 Industrial Road Whitehorse, YT, Canada Y1A 2V3 Attn: Scott Keesey Sampled By: Stu Withers Company: LES	Project: COM-01 ID: COM-01 Name: Sa Dena Hes Reveg Location: Sa Dena Hes LSD: P.O.: Acct code: COM-07-01	Lot ID: <b>574606</b> Control Number: Date Received: Sep 19, 2007 Date Reported: Oct 15, 2007 Report Number: 1049675
--	--	--

		Reference Number	574606-7	574606-8	574606-9	
		Sample Date	Sep 17, 2007	Sep 17, 2007	Sep 17, 2007	
		Sample Location				
		Sample Description	TMF Site 5A-3	TMF Site 5A-4	TMF Balsam Poplar	
		Matrix	Soil	Soil	Soil	
Analyte	Units	Results	Results	Results	Detection Limit	
<b>Available Nutrients</b>						
Nitrate - N	Available	mg/kg	<1	<1	<1	1
Phosphorus	Available	mg/kg	6	<5	<5	5
Potassium	Available	mg/kg	40	30	60	10
Sulfate-S	Available	mg/kg	2	158	92	1
Ammonium - N	Available-dry basis	mg/kg	0.4	0.3	0.3	0.3
<b>Classification</b>						
Cation Exchange Capacity		meq/100g	5.49	5.54	3.79	.007
C:N Ratio			5	1	5	
Organic Matter		%	0.64	0.16	0.20	.15
Carbon	Total Organic	% dry weight	0.32	0.08	0.10	0.05
Nitrogen	Total	% dry weight	0.06	0.06	0.02	0.02
<b>Metals Strong Acid Digestion</b>						
Aluminum	Strong Acid Extractable	ug/g	12200	16400	4380	1
Antimony	Strong Acid Extractable	ug/g	2.8	1.8	2.2	0.5
Arsenic	Strong Acid Extractable	ug/g	17.8	9.5	29.9	0.2
Barium	Strong Acid Extractable	ug/g	107	83.7	54.9	0.03
Beryllium	Strong Acid Extractable	ug/g	0.44	0.58	0.91	0.01
Bismuth	Strong Acid Extractable	ug/g	1.0	1.3	4.0	0.5
Cadmium	Strong Acid Extractable	ug/g	1.6	0.91	21.6	0.05
Calcium	Strong Acid Extractable	ug/g	30600	42700	107000	2
Chromium	Strong Acid Extractable	ug/g	15.7	18.9	7.18	0.04
Cobalt	Strong Acid Extractable	ug/g	9.43	12.0	5.44	0.05
Copper	Strong Acid Extractable	ug/g	27.0	27.4	48.5	0.05
Iron	Strong Acid Extractable	ug/g	27700	34100	20500	1
Lead	Strong Acid Extractable	ug/g	56.2	70.8	3750	0.3
Lithium	Strong Acid Extractable	ug/g	31.3	43.3	16.0	0.1
Magnesium	Strong Acid Extractable	ug/g	10100	12100	3360	1
Manganese	Strong Acid Extractable	ug/g	296	360	1880	0.3
Mercury	Strong Acid Extractable	ug/g	0.020	0.020	0.010	0.003
Molybdenum	Strong Acid Extractable	ug/g	2.6	0.98	9.24	0.05
Nickel	Strong Acid Extractable	ug/g	28.5	28.2	24.9	0.1
Phosphorus	Strong Acid Extractable	ug/g	1660	782	656	0.5
Potassium	Strong Acid Extractable	ug/g	678	460	610	5
Selenium	Strong Acid Extractable	ug/g	<0.3	<0.3	1.1	0.3
Silicon	Strong Acid Extractable	ug/g	180	273	408	1
Silver	Strong Acid Extractable	ug/g	<0.2	<0.2	1.4	0.2
Sodium	Strong Acid Extractable	ug/g	50	52	34	1
Strontium	Strong Acid Extractable	ug/g	115	150	108	0.02

## Analytical Report

Bill To: Access Mining Consultants Ltd.	Project:	Lot ID: <b>574606</b>
Report To: Access Mining Consultants Ltd.	ID: COM-01	Control Number:
# 3 Calcite Business Centre	Name: Sa Dena Hes Reveg	Date Received: Sep 19, 2007
151 Industrial Road	Location: Sa Dena Hes	Date Reported: Oct 15, 2007
Whitehorse, YT, Canada	LSD:	Report Number: 1049675
Y1A 2V3	P.O.:	
Attn: Scott Keesey	Acct code: COM-07-01	
Sampled By: Stu Withers		
Company: LES		

	Reference Number	574606-7	574606-8	574606-9		
	Sample Date	Sep 17, 2007	Sep 17, 2007	Sep 17, 2007		
	Sample Location					
	Sample Description	TMF Site 5A-3	TMF Site 5A-4	TMF Balsam Poplar		
	Matrix	Soil	Soil	Soil		
Analyte	Units	Results	Results	Results	Detection Limit	
<b>Metals Strong Acid Digestion - Continued</b>						
Thallium	Strong Acid Extractable	ug/g	0.5	0.4	<0.3	0.3
Tin	Strong Acid Extractable	ug/g	0.3	0.4	1.1	0.2
Titanium	Strong Acid Extractable	ug/g	144	120	187	0.05
Vanadium	Strong Acid Extractable	ug/g	35.4	23.2	12.2	0.1
Zinc	Strong Acid Extractable	ug/g	195	151	4300	0.1
Zirconium	Strong Acid Extractable	ug/g	7.76	7.48	1.8	0.05
<b>Salinity</b>						
Electrical Conductivity	Saturated Paste	dS/m at 25 C	0.30	1.98	1.17	0.01
<b>Soil Acidity</b>						
pH	1:2 Soil:Water	pH	8.6	8.0	8.0	0.5

## Analytical Report


Bill To: Access Mining Consultants Ltd.	Project:	Lot ID: <b>574606</b>
Report To: Access Mining Consultants Ltd.	ID: COM-01	Control Number:
# 3 Calcite Business Centre	Name: Sa Dena Hes Reveg	Date Received: Sep 19, 2007
151 Industrial Road	Location: Sa Dena Hes	Date Reported: Oct 15, 2007
Whitehorse, YT, Canada	LSD:	Report Number: 1049675
Y1A 2V3	P.O.:	
Attn: Scott Keesey	Acct code: COM-07-01	
Sampled By: Stu Withers		
Company: LES		

		Reference Number	574606-10	574606-11	574606-12	
		Sample Date	Sep 17, 2007	Sep 17, 2007	Sep 17, 2007	
		Sample Location				
		Sample Description	TMF Willow Soil	Control Balsam Poplar Soil	Control Willow Soil	
		Matrix	Soil	Soil	Soil	
Analyte	Units	Results	Results	Results	Detection Limit	
<b>Available Nutrients</b>						
Nitrate - N	Available	mg/kg	<1	<5	<1	1
Phosphorus	Available	mg/kg	<5	<20	<5	5
Potassium	Available	mg/kg	70	70	60	10
Sulfate-S	Available	mg/kg	61	869	1040	1
Ammonium - N	Available-dry basis	mg/kg	0.3	0.5	0.4	0.3
<b>Classification</b>						
Cation Exchange Capacity		meq/100g	5.92	15.1	11.2	.007
C:N Ratio			>5	6.8	6.0	
Organic Matter		%	0.20	1.6	1.5	.15
Carbon	Total Organic	% dry weight	0.10	0.82	0.75	0.05
Nitrogen	Total	% dry weight	<0.02	0.12	0.13	0.02
<b>Metals Strong Acid Digestion</b>						
Aluminum	Strong Acid Extractable	ug/g	3870	15600	16400	1
Antimony	Strong Acid Extractable	ug/g	2.2	4.5	5.3	0.5
Arsenic	Strong Acid Extractable	ug/g	27.6	30.6	38.3	0.2
Barium	Strong Acid Extractable	ug/g	39.1	134	164	0.03
Beryllium	Strong Acid Extractable	ug/g	0.88	0.66	0.72	0.01
Bismuth	Strong Acid Extractable	ug/g	3.6	0.9	0.9	0.5
Cadmium	Strong Acid Extractable	ug/g	18.2	1.6	1.4	0.05
Calcium	Strong Acid Extractable	ug/g	108000	8450	4730	2
Chromium	Strong Acid Extractable	ug/g	6.26	23.3	22.2	0.04
Cobalt	Strong Acid Extractable	ug/g	4.7	13.0	13.4	0.05
Copper	Strong Acid Extractable	ug/g	38.2	32.6	36.3	0.05
Iron	Strong Acid Extractable	ug/g	19900	38000	40500	1
Lead	Strong Acid Extractable	ug/g	3280	72.2	39.3	0.3
Lithium	Strong Acid Extractable	ug/g	14.7	30.2	25.5	0.1
Magnesium	Strong Acid Extractable	ug/g	3000	11500	12100	1
Manganese	Strong Acid Extractable	ug/g	1880	453	380	0.3
Mercury	Strong Acid Extractable	ug/g	0.010	0.026	0.032	0.003
Molybdenum	Strong Acid Extractable	ug/g	8.12	1.9	2.0	0.05
Nickel	Strong Acid Extractable	ug/g	19.8	33.2	36.4	0.1
Phosphorus	Strong Acid Extractable	ug/g	584	688	783	0.5
Potassium	Strong Acid Extractable	ug/g	537	1090	1260	5
Selenium	Strong Acid Extractable	ug/g	0.9	<0.3	<0.3	0.3
Silicon	Strong Acid Extractable	ug/g	356	58	198	1
Silver	Strong Acid Extractable	ug/g	1.2	<0.2	<0.2	0.2
Sodium	Strong Acid Extractable	ug/g	30	40	41	1
Strontium	Strong Acid Extractable	ug/g	106	35.8	24.7	0.02

**Analytical Report**

Bill To: Access Mining Consultants Ltd.	Project:	Lot ID: <b>574606</b>
Report To: Access Mining Consultants Ltd.	ID: COM-01	Control Number:
# 3 Calcite Business Centre	Name: Sa Dena Hes Reveg	Date Received: Sep 19, 2007
151 Industrial Road	Location: Sa Dena Hes	Date Reported: Oct 15, 2007
Whitehorse, YT, Canada	LSD:	Report Number: 1049675
Y1A 2V3	P.O.:	
Attn: Scott Keesey	Acct code: COM-07-01	
Sampled By: Stu Withers		
Company: LES		

	Reference Number	574606-10	574606-11	574606-12		
	Sample Date	Sep 17, 2007	Sep 17, 2007	Sep 17, 2007		
	Sample Location					
	Sample Description	TMF Willow Soil	Control Balsam Poplar Soil	Control Willow Soil		
	Matrix	Soil	Soil	Soil		
Analyte	Units	Results	Results	Results	Detection Limit	
<b>Metals Strong Acid Digestion - Continued</b>						
Thallium	Strong Acid Extractable	ug/g	<0.3	0.6	0.6	0.3
Tin	Strong Acid Extractable	ug/g	1.1	0.6	0.6	0.2
Titanium	Strong Acid Extractable	ug/g	176	484	548	0.05
Vanadium	Strong Acid Extractable	ug/g	11.1	34.1	37.7	0.1
Zinc	Strong Acid Extractable	ug/g	3630	182	163	0.1
Zirconium	Strong Acid Extractable	ug/g	1.6	5.13	6.66	0.05
<b>Physical and Aggregate Properties</b>						
Texture			Sandy Loam	Sandy Loam	Sandy Loam	
Sand	Soil Texture	% by weight	71.7	65.0	60.7	
Silt	Soil Texture	% by weight	24.3	23.0	28.7	
Clay	Soil Texture	% by weight	4.0	12.0	10.7	
<b>Salinity</b>						
Electrical Conductivity	Saturated Paste	dS/m at 25 C	1.00	2.53	2.49	0.01
<b>Soil Acidity</b>						
pH	1:2 Soil:Water	pH	8.1	7.6	6.4	0.5

Approved by:   
 Walter Brandl  
 Operations Manager - Surrey

## Quality Control

Bill To: Access Mining Consultants Ltd. Project:  
 Report To: Access Mining Consultants Ltd. ID: COM-01  
 # 3 Calcite Business Centre Name: Sa Dena Hes Reveg  
 151 Industrial Road Location: Sa Dena Hes  
 Whitehorse, YT, Canada LSD:  
 Y1A 2V3 P.O.:  
 Attn: Scott Keesey Acct code: COM-07-01  
 Sampled By: Stu Withers  
 Company: LES

Lot ID: **574606**  
 Control Number:  
 Date Received: Sep 19, 2007  
 Date Reported: Oct 15, 2007  
 Report Number: 1049675

### Available Nutrients

Blanks	Units	Measured	Mean	Lower Limit	Upper Limit	Passed QC
Ammonium - N	mg/kg	<0.2	0.2	-0.3	0.8	yes
Nitrate - N	mg/kg	<1	0	-1	1	yes
Phosphorus	mg/kg	<5	1	-4	5	yes
Potassium	mg/kg	<10	3	-3	10	yes
Sulfate-S	mg/kg	<1	0	-1	1	yes

Material Used: Edmonton Method Blank  
 Date Acquired: October 01, 2007  
 Acquired By: Bryan Morrison

Replicates	Units	Replicate1	Replicate2	% RSD Criteria	Absolute Criteria	Passed QC
Nitrate - N	mg/kg	<1	<1	10	2	yes
Phosphorus	mg/kg	28	30	10	5	yes
Potassium	mg/kg	30	30	10	10	yes

Material Used: Edmonton Duplicate  
 Date Acquired: October 01, 2007  
 Acquired By: To Thong

Control Sample	Units	Measured	Mean	Lower Limit	Upper Limit	Passed QC
Nitrate - N	mg/kg	27	27	15	39	yes
Phosphorus	mg/kg	28	28	16	40	yes
Potassium	mg/kg	220	215	185	245	yes
Sulfate-S	mg/kg	32	34	28	40	yes

Material Used: 2007 Farmsoil Standard  
 Date Acquired: October 01, 2007  
 Acquired By: Bryan Morrison

Nitrate - N	mg/kg	4	4	0	8	yes
Phosphorus	mg/kg	3	3	-2	8	yes
Potassium	mg/kg	29	30	24	37	yes
Sulfate-S	mg/kg	19	20	17	23	yes

Material Used: Edmonton Calibration Check  
 Date Acquired: October 01, 2007  
 Acquired By: Bryan Morrison

### Classification

Blanks	Units	Measured	Mean	Lower Limit	Upper Limit	Passed QC
Ammonium - N	mg/kg	180	2.59	-3.77	8.95	yes

Material Used: Edmonton Method Blank  
 Date Acquired: October 01, 2007  
 Acquired By: Gordon Grensmann

Replicates	Units	Replicate1	Replicate2	% RSD Criteria	Absolute Criteria	Passed QC
Cation Exchange Capacity	meq/100g	4.67	4.43	9.990	0.100	yes

## Quality Control

Bill To: Access Mining Consultants Ltd. Project:  
 Report To: Access Mining Consultants Ltd. ID: COM-01  
 # 3 Calcite Business Centre Name: Sa Dena Hes Reveg  
 151 Industrial Road Location: Sa Dena Hes  
 Whitehorse, YT, Canada LSD:  
 Y1A 2V3 P.O.:  
 Attn: Scott Keesey Acct code: COM-07-01  
 Sampled By: Stu Withers  
 Company: LES

Lot ID: **574606**  
 Control Number:  
 Date Received: Sep 19, 2007  
 Date Reported: Oct 15, 2007  
 Report Number: 1049675

### Classification - Continued

Replicates	Units	Replicate1	Replicate2	% RSD Criteria	Absolute Criteria	Passed QC
Material Used:	Edmonton Duplicate					
Date Acquired:	October 01, 2007					
Acquired By:	Gordon Grensman					
Carbon	% dry weight	1.36	1.22	20.01	1.00	yes
Nitrogen	% dry weight	0.21	0.22	20.01	1.00	yes
Material Used:	FSJ Duplicate					
Date Acquired:	October 12, 2007					
Acquired By:	Deanna Turner					

Control Sample	Units	Measured	Mean	Lower Limit	Upper Limit	Passed QC
Cation Exchange Capacity	meq/100g	31.1	31.500	16.500	46.500	yes
Material Used:	2003 CEC Standard					
Date Acquired:	October 01, 2007					
Acquired By:	Gordon Grensman					
Carbon	% dry weight	0.74	0.52	0.03	1.00	yes
Nitrogen	% dry weight	0.38	0.37	0.35	0.40	yes
Material Used:	2007 Farm Soil Standard #1					
Date Acquired:	October 12, 2007					
Acquired By:	Deanna Turner					
Carbon	% dry weight	0.72	0.00	0.00	0.00	yes
Nitrogen	% dry weight	0.37	0.00	0.00	0.00	yes
Material Used:	2007 Farm Soil Standard #2					
Date Acquired:	October 12, 2007					
Acquired By:	Deanna Turner					

### Metals Strong Acid Digestion

Blanks	Units	Measured	Mean	Lower Limit	Upper Limit	Passed QC
Aluminum	ug/g	<1	0	-3	3	yes
Antimony	ug/g	<0.5	0.0	-0.0	0.0	yes
Arsenic	ug/g	<0.2	0.0	-0.0	0.0	yes
Barium	ug/g	<0.03	0.00	-0.03	0.03	yes
Beryllium	ug/g	<0.01	0.00	-0.00	0.00	yes
Bismuth	ug/g	<0.5	0.0	-0.0	0.0	yes
Cadmium	ug/g	<0.05	0.00	-0.00	0.00	yes
Calcium	ug/g	<2	0	-6	6	yes
Chromium	ug/g	<0.04	0.00	-0.00	0.00	yes
Cobalt	ug/g	<0.05	0.00	-0.00	0.00	yes
Copper	ug/g	<0.05	0.00	-0.00	0.00	yes
Iron	ug/g	<1	0	-6	6	yes
Lead	ug/g	<0.3	0.0	-0.0	0.0	yes
Lithium	ug/g	<0.1	0.0	-0.0	0.0	yes
Magnesium	ug/g	<1	0	-0	0	yes
Manganese	ug/g	<0.3	0.0	-0.1	0.1	yes

## Quality Control

Bill To: Access Mining Consultants Ltd. Project:  
 Report To: Access Mining Consultants Ltd. ID: COM-01  
 # 3 Calcite Business Centre Name: Sa Dena Hes Reveg  
 151 Industrial Road Location: Sa Dena Hes  
 Whitehorse, YT, Canada LSD:  
 Y1A 2V3 P.O.:  
 Attn: Scott Keesey Acct code: COM-07-01  
 Sampled By: Stu Withers  
 Company: LES

Lot ID: **574606**  
 Control Number:  
 Date Received: Sep 19, 2007  
 Date Reported: Oct 15, 2007  
 Report Number: 1049675

### Metals Strong Acid Digestion - Continued

Blanks	Units	Measured	Mean	Lower Limit	Upper Limit	Passed QC
Mercury	ug/g	<0.003	0.000	-0.030	0.030	yes
Molybdenum	ug/g	<0.05	0.00	-0.00	0.00	yes
Nickel	ug/g	<0.1	0.0	-0.0	0.0	yes
Phosphorus	ug/g	<0.5	0.0	-0.1	0.1	yes
Potassium	ug/g	<5	0	-1	1	yes
Selenium	ug/g	<0.3	0.0	-0.0	0.0	yes
Silicon	ug/g	<1	0	-0	0	yes
Silver	ug/g	<0.2	0.0	-0.0	0.0	yes
Sodium	ug/g	2	0	-0	0	yes
Strontium	ug/g	<0.02	0.00	-0.00	0.00	yes
Thallium	ug/g	<0.3	0.0	-0.0	0.0	yes
Tin	ug/g	<0.2	0.0	-0.0	0.0	yes
Titanium	ug/g	0.1	0.00	-0.00	0.00	yes
Vanadium	ug/g	<0.1	0.0	-0.0	0.0	yes
Zinc	ug/g	0.7	0.0	-0.0	0.0	yes
Zirconium	ug/g	<0.05	0.00	-0.00	0.00	yes

Material Used: Metals Blank - soils  
 Date Acquired: September 28, 2007  
 Acquired By: Kelly Restiaux

Replicates	Units	Replicate1	Replicate2	% RSD Criteria	Absolute Criteria	Passed QC
Aluminum	ug/g	2320	2220	30	10	yes
Antimony	ug/g	7.7	6.6	30.0	3.0	yes
Arsenic	ug/g	5.2	5.8	30.0	1.0	yes
Barium	ug/g	60.2	63.3	30.00	1.00	yes
Beryllium	ug/g	0.72	0.73	30.00	0.50	yes
Cadmium	ug/g	2.3	2.0	30.00	0.50	yes
Calcium	ug/g	4730	4560	30	10	yes
Chromium	ug/g	41.4	43.0	30.00	1.00	yes
Cobalt	ug/g	5.06	4.9	30.00	0.50	yes
Copper	ug/g	80.0	83.7	30.00	1.00	yes
Iron	ug/g	40500	41400	30	10	yes
Lead	ug/g	67.9	72.4	30.0	0.5	yes
Magnesium	ug/g	9730	9320	30	10	yes
Manganese	ug/g	380	402	30.0	1.0	yes
Molybdenum	ug/g	8.54	7.91	30.00	0.50	yes
Nickel	ug/g	43.0	42.1	30.0	0.5	yes
Phosphorus	ug/g	919	740	30.0	10.0	yes
Potassium	ug/g	470	430	30	10	yes
Selenium	ug/g	<0.3	<0.3	30.0	0.5	yes
Silver	ug/g	<0.2	<0.2	30.0	0.5	yes
Sodium	ug/g	41	33	30	1	yes
Strontium	ug/g	44.1	45.2	30.00	1.00	yes

**Quality Control**

Bill To: Access Mining Consultants Ltd. Project:  
 Report To: Access Mining Consultants Ltd. ID: COM-01  
 # 3 Calcite Business Centre Name: Sa Dena Hes Reveg  
 151 Industrial Road Location: Sa Dena Hes  
 Whitehorse, YT, Canada LSD:  
 Y1A 2V3 P.O.:  
 Attn: Scott Keesey Acct code: COM-07-01  
 Sampled By: Stu Withers  
 Company: LES

Lot ID: **574606**  
 Control Number:  
 Date Received: Sep 19, 2007  
 Date Reported: Oct 15, 2007  
 Report Number: 1049675

**Metals Strong Acid Digestion - Continued**

Replicates	Units	Replicate1	Replicate2	% RSD Criteria	Absolute Criteria	Passed QC
Tin	ug/g	4.5	4.0	30.0	1.0	yes
Vanadium	ug/g	60.1	62.4	30.0	1.0	yes
Zinc	ug/g	190	188	30.0	1.0	yes
Zirconium	ug/g	8.12	8.17	30.00	0.50	yes
Material Used: Metals Int. Duplicate - soils						
Date Acquired: September 28, 2007						
Acquired By: Marie England						

Control Sample	Units	Measured	Mean	Lower Limit	Upper Limit	Passed QC
Aluminum	ug/g	16100	14000	11000	17000	yes
Antimony	ug/g	11.5	10.0	4.0	16.0	yes
Arsenic	ug/g	92.1	91.4	72.2	110.6	yes
Barium	ug/g	210	185.00	140.00	230.00	yes
Beryllium	ug/g	0.96	1.03	0.73	1.33	yes
Cadmium	ug/g	42.0	40.90	32.92	48.88	yes
Calcium	ug/g	20700	20400	14400	26400	yes
Chromium	ug/g	19.0	18.00	15.00	21.00	yes
Cobalt	ug/g	7.65	7.30	4.75	9.85	yes
Copper	ug/g	112	108.00	85.20	130.80	yes
Iron	ug/g	24400	22500	16500	28500	yes
Lead	ug/g	1090	1097.0	836.0	1358.0	yes
Magnesium	ug/g	6900	7000	6400	7600	yes
Manganese	ug/g	543	515.0	365.0	665.0	yes
Mercury	ug/g	7.20	6.110	3.740	8.480	yes
Molybdenum	ug/g	0.94	1.02	0.72	1.32	yes
Nickel	ug/g	15.9	17.0	13.4	20.6	yes
Phosphorus	ug/g	674	677.0	515.0	839.0	yes
Potassium	ug/g	4070	4050	2850	5250	yes
Selenium	ug/g	<0.3	1.2	-0.3	2.7	yes
Silver	ug/g	2.4	2.0	-4.3	8.3	yes
Sodium	ug/g	216	226	76	376	yes
Strontium	ug/g	44.5	40.00	28.00	52.00	yes
Thallium	ug/g	1.9	1.0	-0.5	2.5	yes
Tin	ug/g	2.1	2.3	1.5	3.1	yes
Titanium	ug/g	172	281.00	191.00	371.00	yes
Vanadium	ug/g	43.4	44.0	33.5	54.5	yes
Zinc	ug/g	301	320.0	245.0	395.0	yes
Material Used: S0529 NIST 2711 - metals in soil						
Date Acquired: September 28, 2007						
Acquired By: Kelly Restiaux						
Aluminum	ug/g	9040	8930	5180	12680	yes
Antimony	ug/g	1.1	0.0	-2.4	2.4	yes
Arsenic	ug/g	5.8	6.2	1.9	10.5	yes

**Quality Control**

Bill To: Access Mining Consultants Ltd. Project:  
 Report To: Access Mining Consultants Ltd. ID: COM-01  
 # 3 Calcite Business Centre Name: Sa Dena Hes Reveg  
 151 Industrial Road Location: Sa Dena Hes  
 Whitehorse, YT, Canada LSD:  
 Y1A 2V3 P.O.:  
 Attn: Scott Keesey Acct code: COM-07-01  
 Sampled By: Stu Withers  
 Company: LES

Lot ID: **574606**  
 Control Number:  
 Date Received: Sep 19, 2007  
 Date Reported: Oct 15, 2007  
 Report Number: 1049675

**Metals Strong Acid Digestion - Continued**

Control Sample	Units	Measured	Mean	Lower Limit	Upper Limit	Passed QC
Barium	ug/g	87.2	78.10	59.80	96.40	yes
Beryllium	ug/g	0.48	0.44	0.17	0.71	yes
Calcium	ug/g	23100	25300	18895	31705	yes
Chromium	ug/g	14.2	14.50	9.85	19.15	yes
Cobalt	ug/g	5.92	5.92	4.66	7.18	yes
Copper	ug/g	16.0	16.20	13.65	18.75	yes
Iron	ug/g	19100	18100	13999	22201	yes
Lead	ug/g	14.1	14.8	11.5	18.1	yes
Magnesium	ug/g	12700	13300	10417	16183	yes
Manganese	ug/g	204	198.0	154.5	241.5	yes
Mercury	ug/g	0.222	0.210	0.150	0.270	yes
Molybdenum	ug/g	0.77	1.10	0.95	1.25	yes
Nickel	ug/g	17.2	18.8	14.0	23.6	yes
Phosphorus	ug/g	698	770.0	587.0	953.0	yes
Potassium	ug/g	1970	2070	1437	2703	yes
Selenium	ug/g	<0.3	1.3	0.3	2.3	yes
Silver	ug/g	<0.2	0.2	-0.2	0.5	yes
Sodium	ug/g	309	316	252	380	yes
Strontium	ug/g	61.9	64.00	52.81	75.19	yes
Thallium	ug/g	0.5	0.0	-1.5	1.5	yes
Titanium	ug/g	8.11	10.90	3.16	18.64	yes
Vanadium	ug/g	21.6	21.6	13.1	30.1	yes
Zinc	ug/g	67.1	73.8	59.1	88.5	yes

Material Used: S0531 - metals in sediment  
 Date Acquired: September 28, 2007  
 Acquired By: Marie England

**Physical and Aggregate Properties**

Replicates	Units	Replicate1	Replicate2	% RSD Criteria	Absolute Criteria	Passed QC
Moisture	%	8.1	8.5	10.0		yes
Sand	% by weight	92.0	92.0	10.0	0.1	yes
Silt	% by weight	5.6	5.6	10.0	0.1	yes
Clay	% by weight	2.4	2.4	10.0	0.1	yes

Material Used: Edmonton Duplicate  
 Date Acquired: October 01, 2007  
 Acquired By: Holly Fairbairn

Control Sample	Units	Measured	Mean	Lower Limit	Upper Limit	Passed QC
Sand	% by weight	35.0	34.2	29.7	38.7	yes
Silt	% by weight	39.6	39.7	35.2	44.2	yes
Clay	% by weight	25.4	26.1	21.6	30.6	yes
<50 um	% by weight	65.0	0.000	0.000	0.000	yes

**Quality Control**

Bill To: Access Mining Consultants Ltd. Project:  
 Report To: Access Mining Consultants Ltd. ID: COM-01  
 # 3 Calcite Business Centre Name: Sa Dena Hes Reveg  
 151 Industrial Road Location: Sa Dena Hes  
 Whitehorse, YT, Canada LSD:  
 Y1A 2V3 P.O.:  
 Attn: Scott Keesey Acct code: COM-07-01  
 Sampled By: Stu Withers  
 Company: LES

Lot ID: **574606**  
 Control Number:  
 Date Received: Sep 19, 2007  
 Date Reported: Oct 15, 2007  
 Report Number: 1049675

**Physical and Aggregate Properties - Continued**

Control Sample	Units	Measured	Mean	Lower Limit	Upper Limit	Passed QC
Material Used:	2007 Farmsoil Standard					
Date Acquired:	October 01, 2007					
Acquired By:	Holly Fairbairn					

**Salinity**

Control Sample	Units	Measured	Mean	Lower Limit	Upper Limit	Passed QC
Electrical Conductivity	dS/m at 25 C	5.11	4.89	3.48	6.30	yes
% Saturation	%	75	74	66	82	yes
Material Used:	2006 Salinity Standard					
Date Acquired:	September 29, 2007					
Acquired By:	Alvin Kwan					

**Soil Acidity**

Calibration Check	Units	Measured	Target	% Recovery	Criteria (%)	Passed QC
pH	pH	8.0	8.0	100.2	99.6 - 100.8	yes
Material Used:	CC - pH					
Date Acquired:	September 28, 2007					
Acquired By:	Ken Dykstra					

Replicates	Units	Replicate1	Replicate2	% RSD Criteria	Absolute Criteria	Passed QC
pH	pH	8.4	8.4	0.2	0.1	yes
Material Used:	Surrey - Int. Duplicate 1					
Date Acquired:	September 28, 2007					
Acquired By:	Ken Dykstra					

Control Sample	Units	Measured	Mean	Lower Limit	Upper Limit	Passed QC
pH	pH	6.1	6.1	5.9	6.2	yes
Material Used:	Soil pH 98 FS-015					
Date Acquired:	September 28, 2007					
Acquired By:	Ken Dykstra					

**Methodology and Notes**

Bill To: Access Mining Consultants Ltd.	Project:	Lot ID: <b>574606</b>
Report To: Access Mining Consultants Ltd.	ID: COM-01	Control Number:
# 3 Calcite Business Centre	Name: Sa Dena Hes Reveg	Date Received: Sep 19, 2007
151 Industrial Road	Location: Sa Dena Hes	Date Reported: Oct 15, 2007
Whitehorse, YT, Canada	LSD:	Report Number: 1049675
Y1A 2V3	P.O.:	
Attn: Scott Keesey	Acct code: COM-07-01	
Sampled By: Stu Withers		
Company: LES		

**Method of Analysis**

Method Name	Reference	Method	Date Analysis Started	Location
Ammonium-N (Extractable) in Soil	McKeague	* Nitrate and Ammonium Extractable by 2N KCl, 4.35	01-Oct-07	BTG Edmonton
Carbon and Nitrogen in soil (FSJ)	SSSA Book Series 5	* Nitrogen-Total, Ch 37	12-Oct-07	BTG Fort St. John
Carbon and Nitrogen in soil (FSJ)	SSSA Book Series 5	* Total Carbon, Organic Carbon, and Organic Matter, Ch 34	12-Oct-07	BTG Fort St. John
Cation Exchange Capacity (CEC) - Ammonium	McKeague	* CEC and Exchangeable Cations by NH <sub>4</sub> OAc at pH 7, 3.32	01-Oct-07	BTG Edmonton
Metals (Strong Acid Leachable) in soils	B.C.M.O.E	* Strong Acid Leachable Metals (SALM) in Soil, V 1.0, SALM	28-Sep-07	BTG Surrey
Nutrients in General Soil	Comm. Soil Sci. Pl. Anal.	* Modified Kelowna Soil Test, Vol 26, 1995	01-Oct-07	BTG Edmonton
Particle Size Analysis - GS	Carter	* Hydrometer Method, 47.3	01-Oct-07	BTG Edmonton
pH and EC in Soil - 1:2 (Surrey)	McKeague	* 1:2 Soil:Water Ratio, 4.12	28-Sep-07	BTG Surrey
Saturated Paste in General Soil	McKeague	* EC of Saturated Soil Paste, 4.13	29-Sep-07	BTG Edmonton
Sulfate in General Soil	McKeague	* Sulfate Extractable by 0.1M CaCl <sub>2</sub> , 4.47	01-Oct-07	BTG Edmonton

*\* Bodycote method(s) based on reference method*

**References**

B.C.M.O.E	B.C. Ministry of Environment
Carter	Soil Sampling and Methods of Analysis
Comm. Soil Sci.	Communications in Soil Science and Plant Analysis
McKeague	Manual on Soil Sampling and Methods of Analysis
SSSA Book	Methods of Soil Analysis, Part 3

**Comments:**

Please direct any inquiries regarding this report to our Client Services group.

Results relate only to samples as submitted.

The test report shall not be reproduced except in full, without the written approval of the laboratory.



## **Sä Dena Hes Mine**

Land Reclamation and Revegetation Plan

Results Summary of

### ***Phase II Revegetation Test Program - 2007***

---

## *Appendix B*

2007 Revegetation

Test Program Photos

---



**Site 1 Test Plots - Km 22 Main Access Road**



**Site 2 Test Plots - Jewel Box Haul Road**



**Site 3 Test Plots - Landfill**



**Site 5A Test Plots - TMF with 200 mm Soil (Note dense Alfalfa)**



**Site 5B Test Plots -TMF with 300 mm Soil**



**Site 5C Test Plots – TMF with 500 mm Rock and 300 mm Soil**



**Unidentified Moss Growing on Capped Portion of TMF**



**Willow Test Plot at Km 16 Main Access Road (stem cuttings staked in 2000)**

**APPENDIX C**

**LISTING OF**

**2007 WILDLIFE SIGHTINGS**

**AT THE MINE SITE**

## SA DENA HES MINE SITE - WILDLIFE SIGHTINGS - 2007

### ARCTIC LOONS

### BEAVER

### BLACK BEAR

16-Jun	3	Bear and 2 cubs (one brown) at Km 2
23-Jun	1	Near freshwater pumphouse
27-Jun	1	Bunkhouse area
30-Jun	1	at mine gate
19-Jul	1	Burnick Road
23-Jul	1	Bunkhouse area
24-Jul	1	in yard playing with the dogs
28-Jul	1	Brown bear at Km 1

### GEESE

### GOLDEN EAGLE

19-Jun	1	Km 15
--------	---	-------

### GROUSE

### LYNX

23-Mar	1	at Km 9
--------	---	---------

### MOOSE

10-Jan	1	Cow moose at garbage dump
16-Jan	1	at Km 11
19-Jan	1	Bull moose 60" plus at Km 7 (photos)
17-Feb	2	Cow and calf at Andy's cabin Km 43
3-May	1	At reclaim pond
8-May	1	Cow moose at freshwater pumphouse
17-May	2	Cow and calf on Burnick Road
10-Jul	1	At reclaim pond
12-Jul	1	At reclaim pond
18-Jul	1	At mine gate
2-Aug	1	Cow moose at Km 43
13-Aug	1	Cow moose at Km 5
15-Aug	1	Bull moose 2 years old at Km 6
21-Aug	1	Bull moose at Andy's cabin
27-Aug	1	Bull moose 3 years old @ Km 15
7-Sep	1	Cow moose at Reclaim pond
1-Oct	1	Large moose 60" plus antlers at Km 20
2-Oct	1	Same moose at Km 23
4-Oct	2	Same moose and a smaller bull; 4-5 wolves watching them
12-Oct	1	Cow moose at Km 19
3-Nov	2	Cow moose and last year's calf at Km 13

## SA DENA HES MINE SITE - WILDLIFE SIGHTINGS - 2007

### OSPREY

2-May	1	Osprey back and nesting
10-Jul	2	Osprey chicks
September	2	Osprey gone but tow chicks are now flying around

### OTTER

### PORCUPINE

### WOLF

1-Feb	2	On tailings pond
3-Apr	8	Pack of wolves at Km 10 @ 9PM
4-Oct	5	4-5 wolves watching 2 bull moose
26-Dec	7	6-7 wolves on road at Km 13

### WOLVERINE