

# YUKON

## MINERAL DEPOSITS SUMMARY 2015





# **YUKON MINERAL DEPOSITS SUMMARY 2015**

Prepared by the Yukon Geological Survey  
Department of Energy, Mines and Resources  
Government of Yukon

Published under the authority of the Minister of Energy, Mines and Resources, Government of Yukon  
<http://www.emr.gov.yk.ca>

Printed in Whitehorse, Yukon, 2015

ISSN 1499-8092

© Minister of Energy Mines, and Resources, Government of Yukon

This and other Yukon Geological Survey (YGS) publications (including Yukon MINFILE) are available from the Yukon Geological Survey, Energy, Mines and Resources, Government of Yukon, Box 2703 (K-102), Yukon Y1A 2C6. Inquiries may also be directed to (867) 667-3201 or [geology@gov.yk.ca](mailto:geology@gov.yk.ca). Also, many YGS publications may be downloaded free of charge at <http://www.geology.gov.yk.ca/>.

In referring to this publications, please use the following citation:  
Casselman, S. (compiler), 2015. Yukon Mineral Deposits Summary 2015. Yukon Geological Survey, 28 p.

Cover photo: Open pit at Minto Mine, 2013.

# TABLE OF CONTENTS

Introduction.....	1
Summary of Contents.....	1
Units of measure.....	1
Maps of Yukon Mineral deposits	
Yukon GOLD deposits.....	2
Yukon SILVER deposits.....	8
Yukon COPPER deposits.....	12
Yukon LEAD-ZINC deposits.....	16
Yukon TUNGSTEN, MOLYBDENUM and ANTIMONY deposits.....	22
Yukon Ni-Cu-PGE deposits.....	24
Yukon IRON and BARITE deposits.....	26
Tables of Yukon Mineral deposits	
Table 1. Yukon GOLD deposits.....	3
Table 2. Yukon SILVER deposits.....	9
Table 3. Yukon COPPER deposits.....	13
Table 4. Yukon LEAD-ZINC deposits.....	17
Table 5. Yukon TUNGSTEN deposits.....	23
Table 6. Yukon MOLYBDENUM deposits.....	23
Table 7. Yukon ANTIMONY deposits.....	23
Table 8. Yukon Ni-Cu-PGE deposits.....	25
Table 9. Yukon IRON deposits.....	27
Table 10. Yukon BARITE deposits.....	27
References.....	28



## INTRODUCTION

This publication is intended as a snapshot of the hard rock mineral resources of Yukon. It is up-to-date as of November, 2015.

The tables herein have been compiled from information derived from Yukon MINFILE - A database of mineral occurrences and from various technical reports and information filed in the SEDAR (system for electronic document analysis and retrieval) system. Reserve and resource figures presented are quoted from referenced industry sources, technical reports, assessment reports, etc.

This document does not include cut-off grades for resources and reserves. Some numbers have been rounded-off for readability. Metals contained are amounts reported by companies, or were calculated based on reported grade and tonnage.

Included in the tables are historic estimates of tonnage and grade for some deposits not meeting the minimum requirement for mineral resources and reserves as defined by National Instrument 43-101 and CIM standards. These are distinguished from National Instrument 43-101 compliant resources that are indicated by an asterisk(\*).

The reader is encouraged to refer to the original data for detailed information. We accept no responsibility for any errors or omissions.

## Units of measure abbreviations

t = tonnes

Mt = million tonnes

g/t = grams per tonne

koz = thousand ounces

Moz = million ounces

Mlb = million pounds

Blb = billion pounds

## Summary of contents

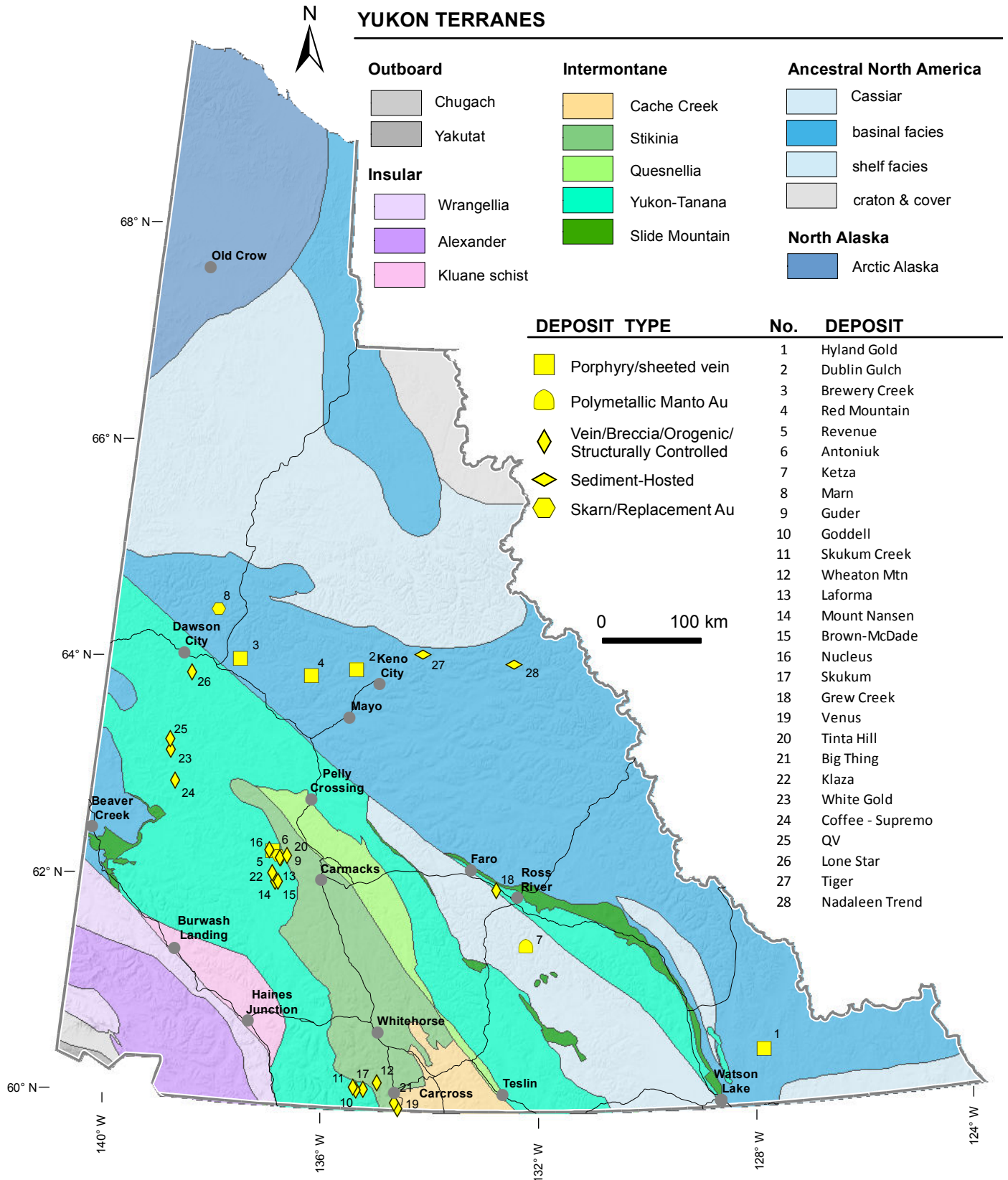
This publication includes:

- a colour map and legend of mineral deposits for each commodity (or commodities) with reserves/resources; and
- tables of mineral deposits organized by commodity, deposit types and sub-types.

Each table contains the following information:

- name of deposit;
- corresponding number on each commodity map;
- other names by which the deposit is known;
- owner and optionee (if applicable);
- Yukon MINFILE reference number;
- National Topographic System (NTS) map sheet;
- latitude and longitude;
- straight line distance from nearby community;
- mineralized zone;
- year resource was calculated
- reference;
- mined zone(s) where applicable
- Tonnage
- mineral resource/reserve and category
- NI 43-101 compliance
- production (tonnage) and years
- grade/commodity; and
- contained metals

# Yukon Gold Deposits



**Table 1. Yukon GOLD deposits**

Property [no. on map] (Other names) Owner/optionee Yukon MINFILE occurrence number	NTS Map Sheet Latitude/Longitude (NAD 83) distance from nearest community	Mineralized zone(s) Year resource was calculated Reference <b>Mined zone(s)</b>	Tonnage Mineral resource/reserve category *NI 43-101 compliant <b>Production (years)</b>	Grade & commodity	Contained metals
<b>PORPHYRY/SHEETED VEIN</b>					
<b>Intrusion-related Au</b>					
<b>Hyland Gold [1]</b> (Porker) Banyan Gold Corp. 095D 011	95D/12 60°30'42" N/127°51'06" W 68 km NE of Watson Lake	<b>Main zone</b>  2012 Technical report by Geovector Management Inc.	12.504 Mt Inferred*	0.90 g/t Au 5.6 g/t Ag	361.7 koz Au 2248.9 koz Ag
<b>Dublin Gulch [2]</b> (Eagle Gold Project) Victoria Gold Corp. 106D 025	106D/4 64°01'56" N/135°51'00" W 49 km NE of Mayo	<b>Eagle</b>  2015 Technical report by Tetra Tech	91.60 Mt Indicated*  2.2 Mt Inferred*	0.78 g/t Au  0.46 g/t Au	2300.1 koz Au  32.3 koz Au
<b>Brewery Creek [3]</b> Golden Predator Mining Corp. 116B 160	116B/1 64°03'28" N/138°14'23" W 58 km E of Dawson City	<b>Multiple zones (Kokanee, Golden, Pacific, Blue, Lucky, Bohemian, Schooner, Lower Fosters, West Big Rock, East Big Rock, Classic, Lone Star, North Slope, Sleeman, Historical Viceroy Pad)</b>  2013 Technical report by Gustavson and Associates  <b>Kokanee and Golden zones</b>	14.152 Mt Indicated Oxide*  9.309 Mt Inferred Oxide*  3.459 Mt Indicated Sulphide*  12.408 Mt Inferred Sulphide*  <b>9.458 Mt Production (1996–2002)</b>	1.27 g/t Au  0.93 g/t Au  1.28 g/t Au  1.37 g/t Au  <b>1.534 g/t Au Ore grade</b>	577.0 koz Au  279.0 koz Au  142.0 koz Au  546.0 koz Au  <b>279.5 koz Au (60% recovery)</b>
<b>Red Mountain [4]</b> (Hobo) AM Gold Inc. 115P 006	115P/15 63°57'13" N/136°44'13" W 57 km NW of Mayo	<b>Red Mountain</b>  2012 Technical report by B. Cole	127.2 Mt Inferred*	0.48 g/t Au	1.96 Moz Au



*Brewery Creek gold property reclaimed heap leach pad and ponds in the foreground, 2009.*

Table 1. (continued) Yukon GOLD deposits

Property [no. on map] (Other names) Owner/optionee Yukon MINFILE occurrence number	NTS Map Sheet Latitude/Longitude (NAD 83) distance from nearest community	Mineralized zone(s) Year resource was calculated Reference <b>Mined zone(s)</b>	Tonnage Mineral resource/reserve category *NI 43-101 compliant <b>Production (years)</b>	Grade & commodity	Contained metals
<b>PORPHYRY/SHEETED VEIN (CONTINUED)</b>					
<b>Porphyry Cu ± Mo ± Au</b>					
<b>Revenue [5]</b> (Golden Revenue) Northern Freegold Resources Ltd. 1151 042	1151/6 62°19'31" N/137°16'09" W 59 km NW of Carmacks	<b>Revenue</b>  2012 Technical report by Geovector Management Inc.	100.983 Mt Inferred*	0.34 g/t Au 3.1 g/t Ag 0.13% Cu 0.04% Mo	1.1 Moz Au 10.2 Moz Ag 286.9 Mlb Cu 89.6 Mlb Mo
<b>Subvolcanic Cu-Au</b>					
<b>Antoniuk [6]</b> (Rambler) 0878950 BC Ltd. 1151 111	1151/6 62°16'13" N/137°05'56" W 47 km NW of Carmacks	<b>Antoniuk</b>  1988 Assessment report #092161	3.878 Mt Not defined	1.16 g/t Au	144.6 koz Au
<b>SKARN/REPLACEMENT</b>					
<b>Polymetallic manto</b>					
<b>Ketza [7]</b> (Ketza River) Veris Gold Corp. 105F 019	105F/9 61°32'17" N/132°16'16" W 51 km SSW of Ross River	<b>Multiple zones (Peel, Penguin, Lab-Hoodoo, Tarn, Gully, QB, Knoll)</b>  2011 Technical report by Yukon- Nevada Gold Corp.  <b>Peel, Break &amp; Nu, QB, Ridge, Tarn, Gully and Knoll</b>	167 800 t Measured*  2.212 Mt Indicated*  453 700 t Inferred*  <b>337 343 t Production (1988-1990)</b>	5.38 g/t Au  5.46 g/t Au  4.62 g/t Au  <b>9.03 g/t Ore grade</b>	29.0 koz Au  388.4 koz Au  67.4 koz Au  <b>98.0 koz Au (87% recovery)</b>
<b>Skarn Au (± Ag ± Cu ± W)</b>					
<b>Marn [8]</b> Canadian United Minerals Inc. 116B 147	116B/7 64°29'37" N/138°47'38" W 59 km NNE of Dawson City	<b>Marn</b>  1986 Assessment report #091814	250 000 t Historic calculation	8.56 g/t Au 1.0% Cu 0.1% WO <sub>3</sub> 17.1 g/t Ag	68.8 koz Au 5.5 Mlbs Cu 0.6 Mlbs W 137.6 koz Ag
<b>Guder [9]</b> (Goldstar, Margarete, Augusta) Northern Freegold Resources Ltd. 1151 053	1151/6 62°17'33" N/137°8'42" W 51 km WNW of Carmacks	<b>Margarete Vein</b>  1988 Assessment report #092699	123 800 t Historic calculation	4.21 g/t Au 47.2 g/t Ag	16.8 koz Au 187.9 koz Ag
<b>VEIN/BRECCIA</b>					
<b>Epithermal-High sulphidation</b>					
<b>Goddell [10]</b> (Goddell Gully) New Pacific Metals Corp. 105D 025	105D/3 60°11'32" N/135°16'55" W 32 km W of Carcross	<b>Goddell Gully</b>  2012 Technical report by GeoSim Services Inc.	329 700 t Indicated*  483 900 t Inferred*	8.13 g/t Au  7.13 g/t Au	86.2 koz Au  110.9 koz Au
<b>Skukum Creek [11]</b> (Mt. Reid) New Pacific Metals Corp. 105D 022	105D/3 60°10'45" N/135°24'42" W 38 km W of Carcross	<b>Ridge, Kuhn, Rainbow, Berg, Rainbow2</b>  2012 Technical report by GeoSim Services Inc.	1.087 Mt Indicated*  0.586 Mt Inferred*	5.54 g/t Au 159.0 g/t Ag  4.74 g/t Au 105.0 g/t Ag	193.7 koz Au 5.5 Moz Ag  89.2 koz Au 2.0 Moz Ag
<b>Wheaton Mountain [12]</b> (Gopher Vein) Carcross/Tagish First Nation 105D 031	105D/6 60°15'11" N/135°2'12" W 20 km WNW of Carcross	<b>Gopher vein</b>  1989 Private Summary Report for Academy Resources by R. Robertson	4 000 t Historic calculation	24.00 g/t Au 24.0 g/t Ag	3.1 koz Au 3.1 koz Ag
<b>Laforma [13]</b> (Mount Freegold) 0878950 BC Ltd. 1151 054	1151/6 62°16'08" N/137°07'04" W 48 km NW of Carmacks	<b>G-3 vein</b>  1982 Assessment report #062138	62 315 t Historic calculation	15.09 g/t Au	30.2 koz Au

Table 1. (continued) Yukon GOLD deposits

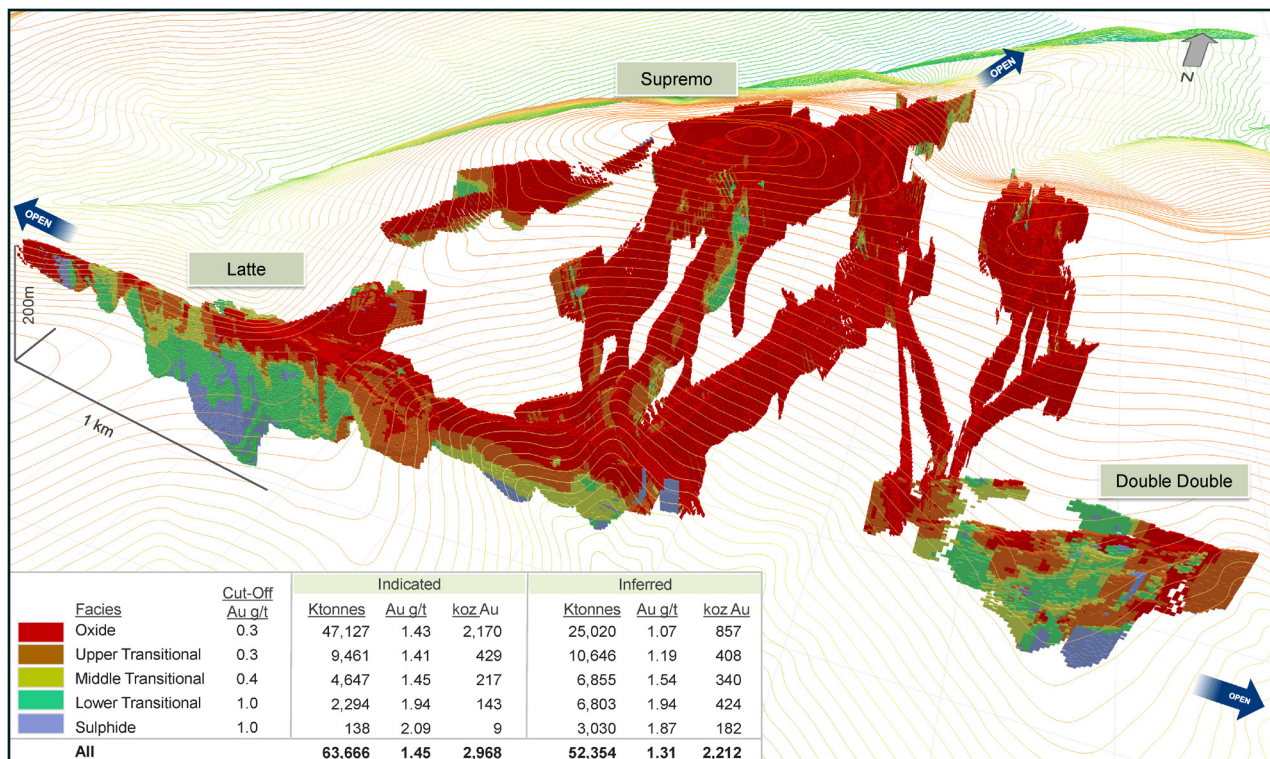
Property [no. on map] (Other names) Owner/optionee Yukon MINFILE occurrence number	NTS Map Sheet Latitude/Longitude (NAD 83) distance from nearest community	Mineralized zone(s) Year resource was calculated Reference <b>Mined zone(s)</b>	Tonnage Mineral resource/reserve category *NI 43-101 compliant <b>Production (years)</b>	Grade & commodity	Contained metals
<b>Mount Nansen [14]</b> (Webber, Huestis, Flex) Under Care and Maintenance with Assessment and Abandoned Mines Yukon 1151 065	1151/3 62°03'16" N/137°10'34" W 47 km W of Carmacks	<b>Huestis</b>   <b>Webber</b>   <b>Flex</b> 2000 Review of the Mt Nansen Property by Strathcona Minerals  <b>Huestis vein</b>	84 000 t Indicated  38 100 t Inferred  58 500 t Indicated  26 900 t Inferred  40 000 t Inferred  <b>Unknown amount Production (1969-1997)</b>	14.00 g/t Au 288.0 g/t Ag  14.30 g/t Au 309.0 g/t Ag  10.50 g/t Au 600.0 g/t Ag  7.00 g/t Au 472.0 g/t Ag  5.00 g/t Au 116.0 g/t Ag  <b>Unknown grade</b>	37.8 koz Au 777.8 koz Ag  17.5 koz Au 378.5 koz Ag  19.8 koz Au 1.1 Moz Ag  6.1 koz Au 408 215 oz Ag  6.4 koz Au 149.2 koz Ag  <b>39.7 koz Au 267.0 koz Ag</b>
<b>Brown-McDade [15]</b> Under Care and Maintenance with Assessment and Abandoned Mines Yukon 1151 064	1151/3 62°03'00" N/137°07'19" W 44 km W of Carmacks	<b>Brown-McDade</b> 2000 Review of the Mount Nansen Property by Strathcona Minerals  <b>Brown-McDade</b>	126 100 t Indicated  25 000 t Inferred  <b>269 000 t Production (1996-1999)</b>	6.20 g/t Au 51.0 g/t Ag  10.70 g/t Au 158.0 g/t Ag  <b>6.20 g/t Au Ore grade</b>	25.1 koz Au 206.8 koz Ag  8.6 koz Au 127.0 koz Ag  <b>35.9 koz Au (67% recovery)</b>
<b>Epithermal-Low sulphidation</b>					
<b>Nucleus [16]</b> Northern Freegold Resources Ltd. 1151 107	1151/6 62°20'03" N/137°20'09" W 61 km NW of Carmacks	<b>Nucleus</b> 2012 Technical Report by Geovector Management Inc.	74.740 Mt Indicated*  63.790 Mt Inferred*	0.54 g/t Au 0.9 g/t Ag 0.06% Cu  0.39 g/t Au 1.5 g/t Ag 0.05% Cu	1.3 Moz Au 2.2 Moz Ag 105.3 Mlb Cu  800.0 koz Au 3.15 Moz Ag 69.2 Mlb Cu
<b>Skukum [17]</b> (Mount Skukum Mine) New Pacific Metals Corp. 105D 158	105D/3 60°12'24" N/135°28'09" W 42 km W of Carcross	<b>Lake</b> 2012 Technical report by GeoSim Services Inc.  <b>Lake</b>	90 500 t Inferred*  <b>233 400 t Production (1986-1988)</b>	9.25 g/t Au 13.0 g/t Ag  <b>not documented</b>	26.9 koz Au 37.8 koz Ag  <b>77.8 koz Au</b>
<b>Grew Creek [18]</b> (Main Zone) Golden Predator Mining Corp 105K 009	105K/2 62°02'47" N/132°51'15" W 24 km WNW of Ross River	<b>Main zone</b> 1997 Assessment report #093627	527 360 t Not defined	5.27 g/t Au	89.4 koz Au
<b>Polymetallic veins</b>					
<b>Venus [19]</b> Ron Berdahl 105D 005	105D/2 60°01'30" N/134°38'05" W 17 km S of Carcross	<b>Venus vein</b> 1985 Canadian Mines Handbook 1986-1987  <b>Venus vein</b>	61 689 t Historic calculation  <b>58 900 t Production (1970-1971)</b>	10.98 g/t Au 305.1 g/t Ag 2.5% Pb 1.5% Zn  <b>5.80 g/t Au 181.7 g/t Ag 3.7% Pb 2.5% Zn Ore grade</b>	21.8 koz Au 605.2 koz Ag 3.4 Mlb Pb 2.0 Mlb Zn  <b>7.5 koz Au 289.0 koz Ag 4.0 Mlb Pb 2.4 Mlb Zn Recovered metals</b>

Table 1. (continued) Yukon GOLD deposits

Property [no. on map] (Other names) Owner/optionee Yukon MINFILE occurrence number	NTS Map Sheet Latitude/Longitude (NAD 83) distance from nearest community	Mineralized zone(s) Year resource was calculated Reference <b>Mined zone(s)</b>	Tonnage Mineral resource/reserve category *NI 43-101 compliant <b>Production (years)</b>	Grade & commodity	Contained metals
<b>Tinta Hill [20]</b> Northern Freegold Resources Ltd. 115I 058	115I/7 62°17'36" N/136°58'40" W 43 km NW of Carmacks	<b>Tinta</b>  2009 Technical report by A. Fonseca and G. Giroux	1.15 Mt Inferred*	1.88 g/t Au 49.3 g/t Ag 0.29% Cu 0.90% Pb 1.51% Zn	69.5 koz Au 1.9 Moz Ag 7.4 Mlb Cu 22.8 Mlb Pb 38.2 Mlb Zn
<b>Big Thing [21]</b> (Arctic, Caribou) L. Barrett 105D 009	105D/2 60°04'34" N/134°42'01" W 61 km SSE of Whitehorse	<b>Big Thing</b> 1983 Yukon MINFILE	74 526 t Historic calculation	13.38 g/t Au 329.1 g/t Ag	32.1 koz Au 788.6 koz Ag
<b>Klaza [22]</b> Rockhaven Resources Ltd. 115I 067	115I/3 62°07'28" N/137°14'47" W 51 km W of Carmacks	<b>Klaza</b>  2015 December 2015 news release. Resource by AMC Mining Consultants (Canada) Ltd.	9.421 Mt Inferred*	4.48 g/t Au 89.02 g/t Ag 0.75% Pb 0.95% Zn	1.36 Moz Au 26.96 Moz Ag 155.4 Mlb Pb 197.9 Mlb Zn
<b>Structurally hosted</b>					
<b>White Gold [23]</b> Kinross Gold Corp. 115O 165, 115O 166	115O/2 63°9'59" N/139°28'58" W 100 km S of Dawson	<b>Golden Saddle</b>	9.797 Mt Indicated*	3.19 g/t Au	1.0 Moz Au
			5.022 Mt Inferred*	2.52 g/t Au	0.4 Moz Au
		<b>Arc</b>  2010 Technical report by SRK Consulting	4.369 Mt Inferred*	1.21 g/t Au	0.2 Moz Au
<b>Coffee [24]</b> Kaminak Gold Corp. 115J 110	115J/14 62°53'30" N/139°19'56" W 130 km S of Dawson	<b>Oxide</b>	47.127 Mt Indicated*	1.43 g/t Au	2.17 Moz Au
			25.020 Mt Inferred*	1.07 g/t Au	857 koz Au
		<b>Upper Transitional</b>	9.461 Mt Indicated*	1.41 g/t Au	429 koz Au
			10.646 Mt Inferred*	1.19 g/t Au	408 koz Au
		<b>Middle Transitional</b>	4.647 Mt Indicated*	1.45 g/t Au	217 koz Au
			6.855 Mt Inferred*	1.54 g/t Au	340 koz Au
		<b>Lower Transitional</b>	2.294 Mt Indicated*	1.94 g/t Au	143 koz Au
			6.803 Mt Inferred*	1.94 g/t Au	424 koz Au
		<b>Sulphide</b>  2015 September 2015 news release. Resource by SIM Geological Inc.	138 Kt Indicated*	2.09 g/t Au	9 Koz Au
3.030 Mt Inferred*	1.87 g/t Au	182 Koz Au			

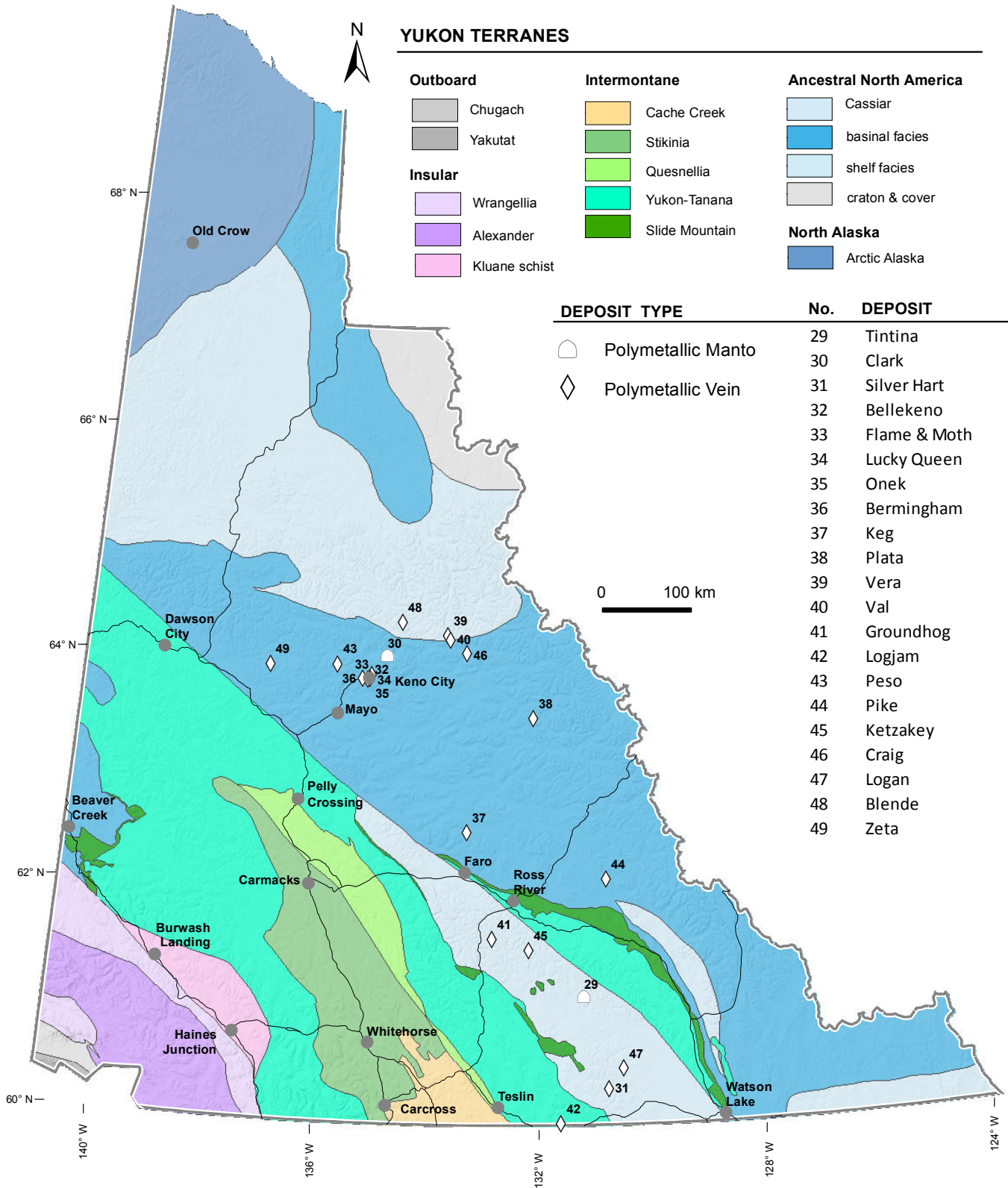
Table 1. (continued) Yukon GOLD deposits

Property [no. on map] (Other names) Owner/optionee Yukon MINFILE occurrence number	NTS Map Sheet Latitude/Longitude (NAD 83) distance from nearest community	Mineralized zone(s) Year resource was calculated Reference <b>Mined zone(s)</b>	Tonnage Mineral resource/reserve category *NI 43-101 compliant <b>Production (years)</b>	Grade & commodity	Contained metals
<b>QV [25]</b> Comstock Metals Ltd. 115O 004	115O/5 63°15'57.5" N/139°30'51.8"W 88 km S of Dawson	<b>VG</b>  2014 Technical report by Pautler and Shahkar	4,390 Mt Inferred*	1.65 g/t Au	232.9 koz Au
<b>Lonestar [26]</b> Klondike Gold Corp 115O 072	115O/14 63°53'33" N/139°13'28" W 21 km S of Dawson	<b>Lone Star</b>  1991 Yukon MINFILE	1.0 Mt Historic calculation	2.47 g/t Au	79.4 koz Au
<b>Sediment-hosted</b>					
<b>Tiger [27]</b> (Rau) ATAC Resources Ltd. 106D 098	106D/1 64°11'56" N/134°25'3" W 51 km NE of Keno	<b>Tiger</b>  2014 Technical report by Kappes Cassiday & Associates	7,150 Mt Indicated*  8,280 Mt Inferred*	2.21 g/t Au 3.7 g/t Ag  1.09 g/t Au 0.94 g/t Ag	508.0 koz Au 845.9 koz Ag  290.2 koz Au 250.2 koz Ag
<b>Nadaleen Trend [28]</b> ATAC Resources Ltd.	106C/1, 106C/2 64°7'17" N/132°29'56" W (30 km Nadaleen Trend centered) 177 km NE of Mayo	<b>Osiris cluster, Anubis cluster, Pyramid</b>	Resource not calculated. 78 245 m drilled in 242 diamond drill and 31 rotary air blast holes. Best drill intercept: 42.93 m of 18.44 g/t Au		



Coffee gold property - Block Model at projected feasibility study resource cut-off grades. Reproduced with permission from Kaminak Gold Corporation from Kaminak Corporate Presentation, Coffee Gold Project, November 2015.

# Yukon Silver Deposits



**Table 2. Yukon SILVER deposits**

Property [no. on map] (Other names) Owner/optionee Yukon MINFILE occurrence number	NTS Map Sheet Latitude/Longitude (NAD 83) distance from nearest community	Mineralized zone(s) Year resource was calculated Reference <b>Mined zone(s)</b>	Tonnage Mineral resource/reserve category *NI 43-101 compliant <b>Production (years)</b>	Grade & commodity	Contained metals
<b>SKARN/REPLACEMENT</b>					
<b>Polymetallic manto</b>					
<b>Tintina [29]</b> (Eagle) Tintina Silver Mines Ltd. 105G 006	105G/3 61°08'30" N/131°09'02" W 116 km SE of Ross River	<b>Tintina</b>  Unknown Canadian Mines Handbook 1980-81 p. 269.	90 719 t Historic calculation	685.7 g/t Ag 6% Pb 10% Zn	2.0 Moz Ag 12.0 Mlb Pb 20.0 Mlb Zn
<b>Clark [30]</b> Tanana Exploration Inc. 106D 011	106D/2 64°07'01" N/134°57'24" W 74 km NE of Mayo	<b>Clark</b>  1975 Assessment report #092121	327 373 t Historic calculation	254.8 g/t Ag 5.64% Pb 4.6% Zn	2681.8 koz Ag 40.6 Mlb Pb 33.1 Mlb Zn
<b>VEIN/BRECCIA</b>					
<b>Polymetallic veins</b>					
<b>Silver Hart [31]</b> CMC Metals Ltd. 105B 021	105B/7 60°19'45" N/130°44'41" W 111 km ENE of Teslin	<b>TM</b>   <b>KL</b>   <b>M</b>  2010 Technical report by Dahrouge Geological Consultants Ltd.	40 700 t Inferred*  16 200 t Inferred*  12 600 t Inferred*	620.4 g/t Ag 1.29% Pb 10.70% Zn  368.5 g/t Ag 1.03% Pb 7.82% Zn  588.1 g/t Ag 4.91% Pb 5.69% Zn	811.8 koz Ag 1.2 Mlb Pb 9.6 Mlb Zn  191.9 koz Ag 0.49 Mlb Pb 2.8 Mlb Zn  238.2 koz Ag 1.4 Mlb Pb 1.6 Mlb Zn
<b>Keno Hill District</b> Various owners (including Yukon Gold Company Ltd., Treadwell Yukon Company Ltd., Keno Hill Ltd., Keno Hill Mining Company Ltd., Falconbridge Nickel Mines Ltd. and United Keno Hill Mines Ltd.) 105M 001	105M/14 Keno area	<b>Multiple deposits (Sadie, Ladue, Lucky Queen, Husky, Husky SW, Silver Queen, Elsa, Elsa 17 vein, Dixie, Silver King, No Cash, Ruby, Birmingham, Townsite, Miller, Galkeno, Onek, Bellekeno, Shamrock, Porcupine and Shamrock)</b>  2015 Alexco Resources website	5 300 000 t Production (1913–1989)	1260.3 g/t Ag 5.62% Pb 3.14% Zn <b>Ore grade</b>	217.0 Moz Ag 656.7 Mlb Pb 366.9 Mlb Zn <b>Recovered metals</b>
<b>Bellekeno [32]</b> Alexco Resource Corp. 105M 001	105M/14 63°54'35" N/135°18'01" W 2 km W of Keno	<b>Bellekeno</b>  2014 Update PEA by SRK Consulting Inc.  <b>Bellekeno</b>	365 000 t Indicated*  243 000 t Inferred*  242 171 t Production (2011–2013)	658 g/t Ag 5.3% Pb 5.3% Zn  428 g/t Ag 4.1% Pb 5.1% Zn  769.7 g/t Ag 9.21% Pb 4.93% Zn <b>Ore grade</b>	7.7 Moz Ag 42.6 Mlb Pb 42.6 Mlb Zn  3.3 Moz Ag 21.9 Mlb Pb 27.3 Mlb Zn  4.5 Moz Ag 36.3 Mlb Pb 11.6 Mlb Zn <b>Recovered metals</b>
<b>Flame &amp; Moth [33]</b> Alexco Resource Corp. 105M 087	105M/14 63°54'21" N/135°19'45" W 2 km W of Keno	<b>Flame &amp; Moth</b>  2014 Update PEA by SRK Consulting Inc.	1.378 Mt Indicated*  107 000 t Inferred*	516.0 g/t Ag 0.42 g/t Au 1.72% Pb 5.70% Zn  313.0 g/t Ag 0.27 g/t Au 0.86% Pb 4.21% Zn	22.9 Moz Ag 18.6 koz Au 52.2 Mlb Pb 172.8 Mlb Zn  1.1 Moz Ag 929 oz Au 2.0 Mlb Pb 9.9 Mlb Zn
<b>Lucky Queen [34]</b> (Keno Hill) Alexco Resource Corp. 105M 085	105M/14 63°57'01" N/135°15'14" W 2 km W of Keno	<b>Lucky Queen</b>  2014 Update PEA by SRK Consulting Inc.	124 000 t Indicated*  150 000 Inferred*	1227.0 g/t Ag 0.17 g/t Au 2.57% Pb 1.72% Zn  571.0 g/t Ag 0.16 g/t Au 1.37% Pb 0.92% Zn	4.9 Moz Ag 678 oz Au 7.0 Mlb Pb 4.7 Mlb Zn  2.8 Moz Ag 772 oz Au 4.5 Mlb Pb 3.0 Mlb Zn

Table 2. (continued) Yukon SILVER deposits

Property [no. on map] (Other names) Owner/optionee Yukon MINFILE occurrence number	NTS Map Sheet Latitude/Longitude (NAD 83) distance from nearest community	Mineralized zone(s) Year resource was calculated Reference <b>Mined zone(s)</b>	Tonnage Mineral resource/reserve category *NI 43-101 compliant <b>Production (years)</b>	Grade & commodity	Contained metals
<b>Onek [35]</b> (Keno Hill) Alexco Resource Corp. 105M 084	105M/14 63°54'48" N/135°17'24" W 1 km W of Keno	<b>Onek</b>  2014 Update PEA by SRK Consulting Inc.	654 000 t Indicated*  234 000 t Inferred*	200.0 g/t Ag 0.62 g/t Au 1.29% Pb 12.3% Zn  134.0 g/t Ag 0.44 g/t Au 1.24% Pb 8.86% Zn	4.2 Moz Ag 13.0 koz Au 18.6 Mlb Pb 177.0 Mlb Zn  1.0 Moz Ag 3.3 koz Au 6.4 Mlb Pb 45.6 Mlb Zn
<b>Bermingham [36]</b> (Keno Hill) Alexco Resource Corp. 105M 086	105M/14 63°54'28" N/135°25'58" W 10 km W of Keno	<b>Bermingham</b>  2014 Update PEA by SRK Consulting Inc.	257 000 t Indicated  102 000 t Inferred*	460.0 g/t Ag 0.06 g/t Au 2.0% Pb 2.1% Zn  372.0 g/t Ag 0.09 g/t Au 1.12% Pb 1.83% Zn	3.8 Moz Ag 496 oz Au 11.3 Mlb Pb 11.9 Mlb Zn  1.2 Moz Ag 295 oz Au 2.5 Mlb Pb 4.1 Mlb Zn
<b>Keg [37]</b> Silver Range Resources Ltd. 105K 078	105K/11 62°35'1" N/133°19'9" W 39 km N of Faro	<b>Keg Main zone</b>  2013 Updated technical report by Giroux Consultants Ltd.	39.76 Mt Inferred*	30.25 g/t Ag 0.15% Cu 0.26% Pb 0.77% Zn	38.7 Moz Ag 131.4 Mlb Cu 227.5 Mlb Pb 673.7 Mlb Zn
<b>Plata [38]</b> Rockhaven Resources Ltd. 105N 003	105N/9 63°35'09" N/132°01'55" W 191 km E of Mayo	<b>Plata – 4 vein</b>  1996 Reported in YEIP report 2001-073 by Carlson and Fields  <b>Plata - 4 vein</b>	206 000 t Historic calculation  <b>3 191 t</b> <b>Production (1976–1984)</b>	294.85 g/t Ag 3.63 g/t Au  <b>144.52 g/t Ag</b> <b>Ore grade</b>	2.0 Moz Ag 24.0 koz Au  <b>290.0 koz Ag</b> <b>Recovered metals</b>
<b>Vera [39]</b> Shawn Ryan 106C 083	106C/5 64°18'24" N/133°44'50" W 131 km NE of Mayo	<b>Vera Main zone</b>  1982 Assessment report #062208	392 667 t Historic calculation	607.00 g/t Ag 3.18% Pb 3.47% Zn	7.7 Moz Ag 27.5 Mlb Pb 30.0 Mlb Zn
<b>Val [40]</b> Archer Cathro & Associates (1981) Ltd. 106C 085	106C/5 64°16'01" N/133°41'35" W 130 km NE of Mayo	<b>Siltstone</b>  1998 Assessment report #062146	19 964 t Historic calculation	1029.0 g/t Ag 26.7% Pb 7.3% Zn	660.5 koz Ag 11.7 Mlb Pb 3.2 Mlb Zn
<b>Groundhog [41]</b> RRDC R-98 block 105F 029	105F/10 61°39'00" N/132°49'42" W 44 km SW of Ross River	<b>No. 1 and 3 veins</b>  1988 Assessment report #093042	200 948 t Historic calculation	91.89 g/t Ag 3.18% Pb 4.01% Zn	593.6 koz Ag 14.1 Mlb Pb 17.7 Mlb Zn
<b>Logjam [42]</b> CMC Metals Ltd. 105B 038	105B/4 60°01'32" N/131°36'06" W 65 km ESE of Teslin	<b>Logjam</b>  1983 Assessment report #062205	70 144 t Historic calculation	393.2 g/t Ag 3.02 g/t Au	886.7 koz Ag 6.8 koz Au
<b>Peso [43]</b> (Rex) Victoria Gold Corp. 106D 021	106D/4 64°01'28" N/135°56'42" W 47 km N of Mayo	<b>Peso/Rex</b>  1965 Assessment report #062258	139 371 t Historic calculation	716.57 g/t Ag 3.7% Pb	3.2 Moz Ag 11.3 Mlb Pb
<b>Pike [44]</b> RRDC R-56a block 105J 003	105J/2 62°10'1" N/130°41'42" W 93 km E of Ross River	<b>Zone 1</b>  1981 Cima resources Ltd., 3rd Quarter Report - 1981	300 000 t Historic calculation	62.20 g/t Ag 0.5% Cu	599.9 koz Ag 3.3 Mlb Cu
<b>Ketzakey [45]</b> Veris Gold Corp. 105F 057	105F/9 61°33'3" N/132°9'25" W 50 km S of Ross River	<b>18B vein</b>  1989 Yukon Geology - Volume 1, p. 64	10 702 t Historic calculation	545.1 g/t Ag 12.15% Pb	187.6 koz Ag 2.9 Mlb Pb

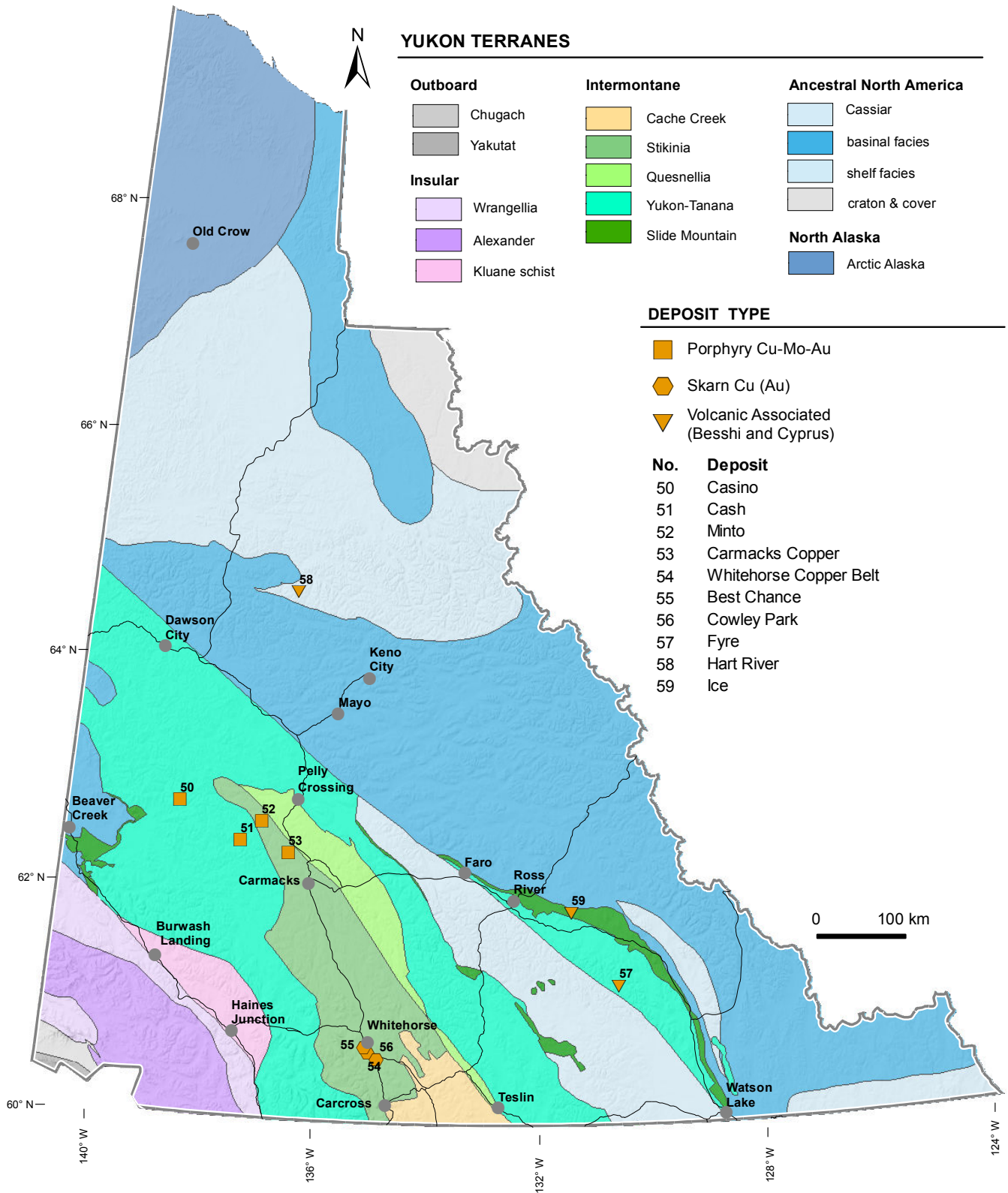
Table 2. (continued) Yukon SILVER deposits

Property [no. on map] (Other names) Owner/optionee Yukon MINFILE occurrence number	NTS Map Sheet Latitude/Longitude (NAD 83) distance from nearest community	Mineralized zone(s) Year resource was calculated Reference <b>Mined zone(s)</b>	Tonnage Mineral resource/reserve category *NI 43-101 compliant <b>Production (years)</b>	Grade & commodity	Contained metals
<b>Craig [46]</b> Archer Cathro & Associates (1981) Ltd. 106C 073	106C/3 64°9'21" N/133°21'22" W 140 km ENE of Mayo	<b>West</b>  2002 Canadian Mines Handbook, 2001/02, p. 233	874 980 t Historic calculation	123.0 g/t Ag 13.5% Pb 8.5% Zn	3.5 Moz Ag 259.9 Mlb Pb 163.7 Mlb Zn
<b>Logan [47]</b> Yukon Zinc Corp. 105B 099	105B/9 60°30'5" N/130°28'12" W 109 km NW of Watson Lake	<b>Logan</b>  2004 Technical report by Hatch Associated Ltd.	13.08 Mt Inferred*	23.66 g/t Ag 5.10% Zn	10.0 Moz Ag 1.5 Blb Zn
<b>Blende [48]</b> Blind Creek Resources Ltd. 106D 064	106D/7 64°24'39" N/134°40'21" W 109 km NE of Mayo	<b>West</b>   <b>East</b>  2005 Technical report by Transpolar Geological Consultants Inc.	15.3 Mt Undefined  4.3 Mt Undefined	67.5 g/t Ag 3.04% Pb 3.23% Zn  15.1 g/t Ag 3.05% Pb 1.31% Zn	33.2 Moz Ag 1.0 Blb Pb 1.1 Blb Zn  2.1 Moz Ag 288.6 Mlb Pb 123.9 Mlb Zn
<b>Sn(Ag) veins</b>					
<b>Zeta [49]</b> (Hopeful) 18526 Yukon Inc., M. Knutson 115P 047	115P/14 63°59'23" N/137°17'31" W 82 km NW of Mayo	<b>Zeta</b>  1988 Yukon Exploration and Geology, 1988, p. 220	98 248 t Historic calculation	557.8 g/t Ag	1.8 Moz Ag



Bellekeno mine portal, Keno Hill silver property.

# Yukon Copper Deposits



**Table 3. Yukon COPPER deposits**

Property [no. on map] (Other names) Owner/optionee Yukon MINFILE occurrence number	NTS Map Sheet Latitude/Longitude (NAD 83) distance from nearest community	Mineralized zone(s) Year resource was calculated Reference <b>Mined zone(s)</b>	Tonnage Mineral resource/reserve category *NI 43-101 compliant <b>Production (years)</b>	Grade & commodity	Contained metals (T) = total (ox) = oxide
<b>PORPHYRY/SHEETED VEIN</b>					
<b>Porphyry Cu ± Mo ± Au</b>					
<b>Casino [50]</b> Western Copper and Gold Corp. 115J 028	115J/10 62°44'16" N/138°49'41" W 150 km NW of Carmacks	<b>Leached Cap/Oxide Gold zone</b>	84.0 Mt Measured and Indicated*	0.40 g/t Au 2.6 g/t Ag 0.04% Cu 0.02% Mo	1.1 Moz Au 6.9 Moz Ag 74.1 Mlb Cu 370 Mlb Mo
			17.0 Mt Inferred*	0.31 g/t Au 1.9 g/t Ag 0.01% Cu 0.008% Mo	0.2 Moz Au 1.1 Moz Ag 3.7 Mlb Cu 3.0 Mlb Mo
		<b>Supergene Oxide zone</b>	61.0 Mt Measured and Indicated*	0.34 g/t Au 1.8 g/t Ag 0.25% Cu 0.022% Mo	0.7 Moz Au 3.6 Moz Ag 336.1 Mlb Cu 29.6 Mlb Mo
			26.0 Mt Inferred*	0.17 g/t Au 1.4 g/t Ag 0.26% Cu 0.010% Mo	0.1 Moz Au 1.2 Moz Ag 149.0 Mlb Cu 5.7 Mlb Mo
		<b>Supergene Sulphide zone</b>	252.0 Mt Measured and Indicated*	0.25 g/t Au 1.8 g/t Ag 0.26% Cu 0.021% Mo	2.0 Moz Au 14.7 Moz Ag 1444.1 Mlb Cu 116.6 Mlb Mo
	102.0 Mt Inferred*	0.19 g/t Au 1.5 g/t Ag 0.20% Cu 0.010% Mo	0.6 Moz Au 4.9 Moz Ag 449.6 Mlb Cu 22.5 Mlb Mo		
		<b>Hypogene zone</b>	743.0 Mt Measured and Indicated*	0.22 g/t Au 1.7 g/t Ag 0.17% Cu 0.023% Mo	5.3 Moz Au 39.7 Moz Ag 2783.9 Mlb Cu 376.6 Mlb Mo
		2013 Feasibility Study by M3 Engineering and Technology Corporation	1568.0 Mt Inferred*	0.16 g/t Au 1.36 g/t Ag 0.14% Cu 0.02% Mo	8.1 Moz Au 68.6 Moz Ag 4838.2 Mlb Cu 691.2 Mlb Mo
<b>Cash [51]</b> Selkirk First Nation 115I 037	115I/5 62°25'45" N/137°37'12" W 79 km NW of Carmacks	<b>Journeay zone</b> (hypogene)  1977 Mineral Industry Report 1977, p. 70-71	36.29 Mt Historic calculation	0.17% Cu 0.011% Mo	136.0 Mlb Cu 8.8 Mlb Mo



Casino copper-gold-molybdenum-silver porphyry property.

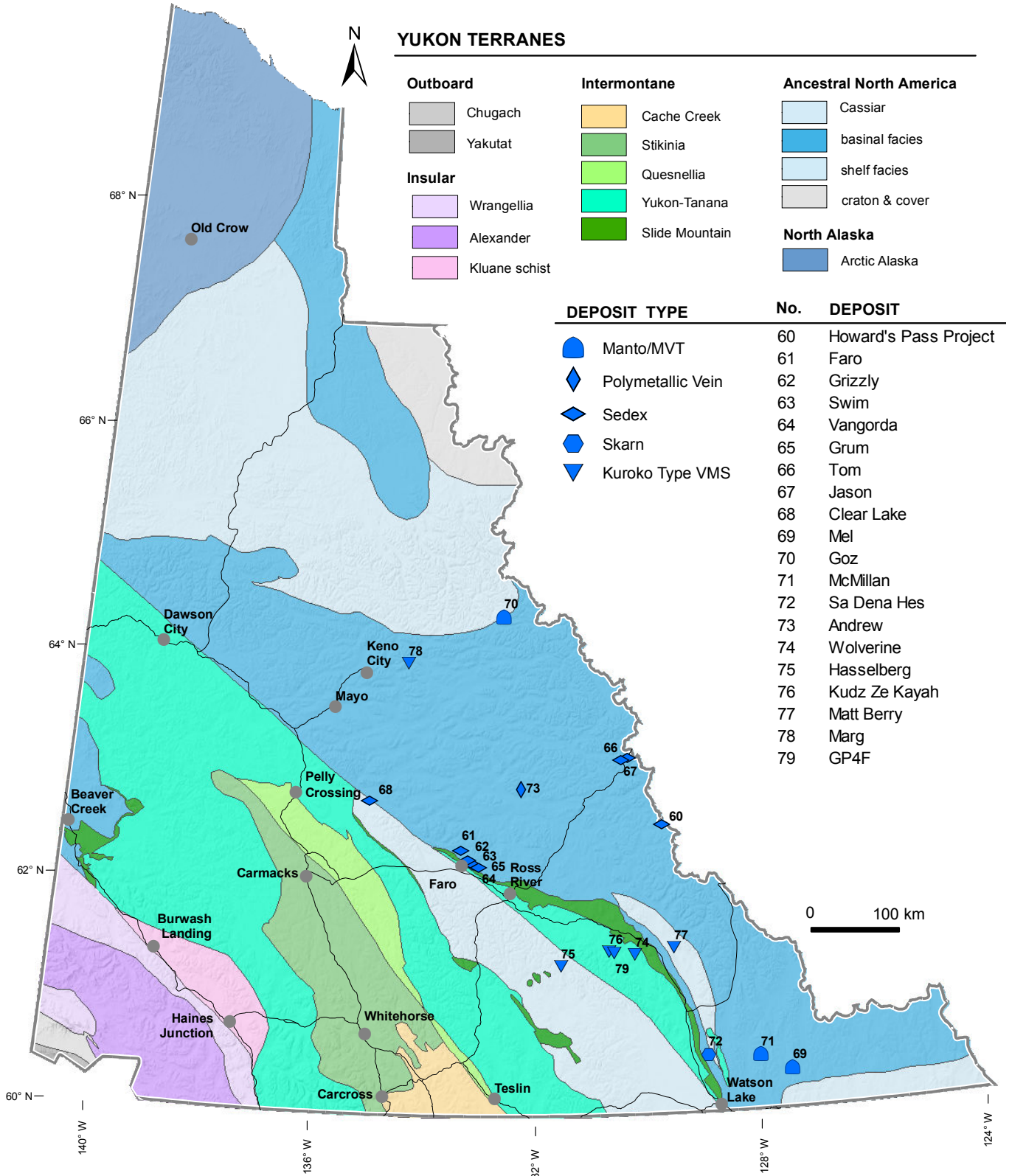
Table 3. (continued) Yukon COPPER deposits

Property [no. on map] (Other names) Owner/optionee Yukon MINFILE occurrence number	NTS Map Sheet Latitude/Longitude (NAD 83) distance from nearest community	Mineralized zone(s) Year resource was calculated Reference <b>Mined zone(s)</b>	Tonnage Mineral resource/reserve category *NI 43-101 compliant <b>Production (years)</b>	Grade & commodity	Contained metals (T) = total (ox) = oxide
<b>Alkalic porphyry Cu-Au</b>					
<b>Minto [52]</b> Capstone Mining Corp. 1151 021, 1151 022	1151/11 62°36'33" N/137°14'18" W 76 km NW of Carmacks	<b>Main Minto Pit, Area 2 Pit and Underground</b>	38.944 Mt Measured and Indicated*	1.04% Cu 0.38 g/t Au 3.7 g/t Ag	892.7 Mlb Cu 475.8 koz Au 4.7 Moz Ag
		<b>Minto South</b>	8.134 Mt Inferred*	0.81% Cu 0.24 g/t Au 2.9 g/t Ag	145.2 Mlb Cu 62.8 koz Au 766.2 koz Ag
			5.064 Mt Measured and Indicated*	0.91% Cu 0.28 g/t Au 2.7 g/t Ag	101.6 Mlb Cu 45.6 koz Au 431.5 koz Ag
		<b>Ridgetop</b>	318 000 t Inferred*	0.75% Cu 0.13 g/t Au 1.6 g/t Ag	5.3 Mlb Cu 13 koz Au 16.1 koz Ag
			2.108 Mt Measured and Indicated*	2.01% Cu 0.92 g/t Au 5.6 g/t Ag	93.4 Mlb Cu 70.5 koz Au 505.6 koz Ag
		<b>Minto North</b>	25 000 t Inferred*	0.84% Cu 0.40 g/t Au 4.4 g/t Ag	0.4 Mlb Cu 322 oz Au 3.5 koz Ag
			1.177 Mt Measured and Indicated*	2.07% Cu 0.92 g/t Au 5.6 g/t Ag	53.9 Mlb Cu 34.8 koz Au 210.8 koz Ag
		<b>Minto East</b>	14 000 t Inferred*	1.03% Cu 0.45 g/t Au 2.8 g/t Ag	0.3 Mlb Cu 203 oz Au 1.3 koz Ag
			47.931 Mt Measured and Indicated*	1.09% Cu 0.39 g/t Au 3.7 g/t Ag	1151.5 Mlb Cu 601.0 koz Au 5.7 Moz Ag
		<b>Minto South</b>	8.493 Mt Inferred*	0.81% Cu 0.24 g/t Au 2.9 g/t Ag	151.6 Mlb Cu 65.5 koz Au 786.4 koz Ag
	2012 Preliminary Feasibility Study by Minto Explorations Ltd., and Capstone annual reports for 2011, 2012, 2013 and 2014	<b>Main Minto Pit, Area 2 Pit and Underground</b>	8.42 Mt Production (2007-2014)	0.66% Cu 0.53 g/t Au 5.5 g/t Ag <b>Ore grade</b>	281.2 Mlb Cu 143.6 koz Au 1.5 Moz Ag <b>Recovered metals</b>
<b>Carmacks Copper [53]</b> (Williams Creek) Copper North Mining Corp. 1151 008	1151/7 62°20'56" N/136°41'37" W 36 km NNW of Carmacks	<b>Zone 1, 4, 7 and 7A – Oxide</b>	11.98 Mt Measured and Indicated*	1.07% total Cu 0.86% oxide Cu 0.46 g/t Au 4.6 g/t Ag	282.3 Mlb Cu(T) 227.1 Mlb Cu(ox) 175.6 koz Au 1.8 Moz Ag
			90 000 t Inferred*	0.73% total Cu 0.53% oxide Cu 0.13 g/t Au 1.8 g/t Ag	1.4 Mlb Cu(T) 1.1 Mlb Cu(ox) 370 oz Au 5.2 koz Ag
		<b>Zone 1, 4, 7 and 7A – Sulphide</b>	4.34 Mt Measured and Indicated*	0.75% total Cu 0.221 g/t Au 2.37 g/t Ag	71.7 Mlb Cu 30.8 koz Au 330.6 koz Ag
		2014 Preliminary Economic Analysis by Merit Consulting International Inc.	4.031 Mt Inferred*	0.71% total Cu 0.179 g/t Au 1.9 g/t Ag	63.1 Mlb Cu 23.2 koz Au 246.2 koz Ag

Table 3. (continued) Yukon COPPER deposits

Property [no. on map] (Other names) Owner/optionee Yukon MINFILE occurrence number	NTS Map Sheet Latitude/Longitude (NAD 83) distance from nearest community	Mineralized zone(s) Year resource was calculated Reference <b>Mined zone(s)</b>	Tonnage Mineral resource/reserve category *NI 43-101 compliant Production (years)	Grade & commodity	Contained metals (T) = total (ox) = oxide
<b>SKARN/REPLACEMENT</b>					
<b>Skarn Cu(Au)</b>					
<b>Whitehorse Copper Belt [54]</b> Various Producers including Whitehorse Copper Mines Ltd. 105D 053	105D/11 60°37'36" N/135°03'20" W 6 km W of Whitehorse	<b>Whitehorse Copper Belt (incl. Pueblo, Little Chief, Arctic Chief, Middle Chief, War Eagle, Black Cub South, Keewenaw, Best Chance-Grafter, Valerie, Copper and Carlisle deposits)</b>  1898-1982 DIAND Open File 1984-1 by P.H. Watson	10.350 Mt Production (1898-1982)	1.49% Cu 0.47 g/t Au 6.5 g/t Ag 0.0004% Mo Ore grade	339.9 Mlb Cu 156.4 koz Au 2,200 koz Ag 93.5 klb Mo Recovered metals
<b>Best Chance [55]</b> (Whitehorse Copper Belt) Unknown 105D 053	105D/11 60°40'13" N/135°07'24" W 7 km SW of Whitehorse	<b>Best Chance</b>  1984 DIAND Open File 1984-1 by P.H. Watson	447 000 t Historic calculation	0.71% Cu 0.47 g/t Au	339.9 Mlb Cu 156.4 koz Au
<b>Cowley Park [56]</b> (Whitehorse Copper Belt) Lobo Del Norte Ltd. 105D 053	105D/10 60°34'28" N/134°53'28" W 17 km S of Whitehorse	<b>Cowley Park Open Pit</b>  <b>Cowley Park Underground</b>  <b>GEM</b>  <b>Keewenaw</b>  <b>Black Cub North</b>  <b>Black Cub South</b>  <b>Kodiak Cub</b>  1984 DIAND Open File 1984-1 by P.H. Watson	884 000 t Historic calculation  668 000 t Historic calculation  625 000 t Historic calculation  202 000 t Historic calculation  156 000 t Historic calculation  20 000 t Historic calculation  57 000 t Historic calculation	1.04% Cu 0.21 g/t Au 3.8 g/t Ag 0.066% Mo  0.90% Cu  1.01% Cu  1.06% Cu  0.82% Cu  1.25% Cu 0.24 g/t Au 12.34 g/t Ag 0.008% Mo  1.18% Cu	20.3 Mlb Cu 6.0 koz Au 107.1 koz Ag 1.3 Mlb Mo  13.3 Mlb Cu  13.9 Mlb Cu  4.7 Mlb Cu  2.8 Mlb Cu  0.6 Mlb Cu 154 oz Au 7.9 koz Ag 3.5 klb Mo  1.5 Mlb Cu
<b>VOLCANIC ASSOCIATED</b>					
<b>Besshi-type (Cu ± Zn)</b>					
<b>Fyre [57]</b> (Kona) Minquest Ltd. 105G 034	105G/2 61°13'34" N/130°30'55" W 132 km SE of Ross River	<b>Kona</b>  2015 Kona VMS Resource Statement by IMC Mining Pty Ltd. January 22, 2015 news release	3.5 Mt Indicated*  9.1 Mt Inferred*	1.55% Cu 0.10% Co 0.63 g/t Au 0.31% Zn  1.56% Cu 0.09% Co 0.63 g/t Au 0.30% Zn	119.6 Mlb Cu 7.7 Mlb Co 70.9 koz Au 23.9 Mlb Zn  312.9 Mlb Cu 18.0 Mlb Co 184.3 koz Au 60.1 Mlb Zn
<b>Hart River [58]</b> (Mark) Panarc Resources Ltd. 116A 009	116A/10 64°38'05" N/136°49'30" W 125 km NW of Mayo	<b>Hart River</b>  1969 Geology of the Upper Hart River Area, Indian and Northern Affairs Bulletin 9, 1997	523 849 t Historic calculation	1.45% Cu 3.65% Zn 0.87% Pb 49.7 g/t Ag 1.41 g/t Au	16.7 Mlb Cu 42.1 Mlb Zn 10.0 Mlb Pb 837.1 koz Ag 23.7 koz Au
<b>Cyprus-type (Cu)</b>					
<b>Ice [59]</b> Yukon Zinc Corp. 105G 118	105G/14 61°52'29" N/131°21'37" W 57 km ESE of Ross River	<b>Ice</b>  1998 Assessment report #094335	4.562 t Indicated	1.48% Cu	148.8 Mlb Cu

# Yukon Lead-Zinc Deposits



**Table 4. Yukon LEAD-ZINC deposits**

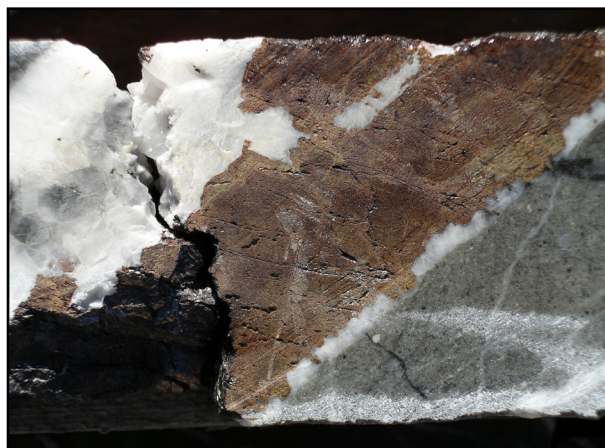
Property [no. on map] (Other names) Owner/optionee Yukon MINFILE occurrence number	NTS Map Sheet Latitude/Longitude (NAD 83) distance from nearest community	Mineralized zone(s) Year resource was calculated Reference <b>Mined zone(s)</b>	Tonnage Mineral resource/reserve category *NI 43-101 compliant <b>Production (years)</b>	Grade & commodity	Contained metals
<b>SEDIMENT ASSOCIATED</b>					
<b>Sedimentary exhalative(Sedex)</b>					
<b>Howard's Pass [60]</b> (Selwyn Project) Chihong Mining Canada Ltd. 1051 012, 032, 037, 053, 066, 067, 068, 069	1051/6 62°33'52" N/129°31'38" W 175 km ENE of Ross River	<b>XY Central</b> 2011  <b>XY West</b> 2012  <b>Brodel</b> 2008  <b>HC</b> 2008   <b>HC West</b> 2008   <b>Don East</b> 2008    <b>Don</b> 2012    <b>Anniv east</b> 2008    <b>Anniv Central</b> 2008    <b>Anniv West</b> 2008  <b>HP</b> 2008  <b>OP</b> 2008  <b>OP West</b> 2008  <b>Pelly North</b> 2008  Various technical reports and updates by Pearson geological Services Ltd., Kirkham Geosystems Ltd. and Selwyn Resources Ltd.	29.936 Mt Indicated*  12.754 Mt Inferred*  12.100 Mt Inferred*  8.600 Mt Indicated*  19.370 Mt Inferred*  19.680 Mt Indicated*  10.220 Mt Inferred*  35.490 Mt Indicated*  41.770 Mt Inferred*  41.789 Mt Indicated*  10.980 Mt Inferred*  19.920 Mt Indicated*  16.050 Mt Inferred*  17.980 Mt Indicated*  40.120 Mt Inferred*  6.880 Mt Inferred*  6.180 Mt Inferred*  1.770 Mt Inferred*  1.380 Mt Inferred*  6.850 Mt Inferred*	6.35% Zn 2.69% Pb  4.42% Zn 1.40% Pb  4.31% Zn 1.16% Pb  4.01% Zn 1.04% Pb  3.83% Zn 1.09% Pb  5.46% Zn 1.56% Pb  5.42% Zn 1.50% Pb  5.37% Zn 1.63% Pb  5.22% Zn 1.59% Pb  5.35% Zn 1.87% Pb  5.07% Zn 1.57% Pb  4.15% Zn 1.20% Pb  4.04% Zn 1.08%Pb  4.52% Zn 1.51% Pb  4.63% Zn 1.48% Pb  4.30% Zn 1.25% Pb  4.55% Zn 1.23% Pb  4.18% Zn 1.29% Pb  2.67% Zn 0.86% Pb  3.20% Zn 0.90% Pb	4182.8 Mlb Zn 1771.9 Mlb Pb  1240.5 Mlb Zn 392.9 Mlb Pb  1147.5 Mlb Zn 308.8 Mlb Pb  758.8 Mlb Zn 196.8 Mlb Pb  1632.4 Mlb Zn 464.6 Mlb Pb  2364.4 Mlb Zn 675.5 Mlb Pb  1218.9 Mlb Zn 337.3 Mlb Pb  4193.6 Mlb Zn 1272.9 Mlb Pb  4797.8 Mlb Zn 1461.5 Mlb Pb  4919.4 Mlb Zn 1719.5 Mlb Pb  1224.9 Mlb Zn 379.3 Mlb Pb  1545.1 Mlb Zn 446.8 Mlb Pb  1426.8 Mlb Zn 381.4 Mlb Pb  1788.3 Mlb Zn 597.4 Mlb Pb  4,087.4 Mlb Zn 1,306.5 Mlb Pb  651.0 Mlb Zn 189.2 Mlb Pb  618.7 Mlb Zn 167.3 Mlb Pb  163.0 Mlb Zn 50.2 Mlb Pb  81.1 Mlb Zn 26.1 Mlb Pb  482.3 Mlb Zn 135.7 Mlb Pb

Table 4. (continued) Yukon LEAD-ZINC deposits

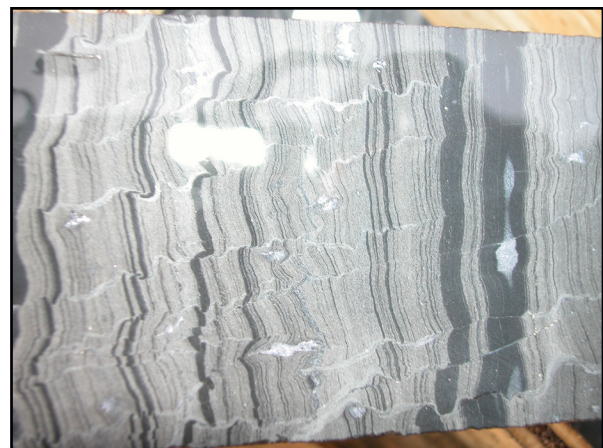
Property [no. on map] (Other names) Owner/optionee Yukon MINFILE occurrence number	NTS Map Sheet Latitude/Longitude (NAD 83) distance from nearest community	Mineralized zone(s) Year resource was calculated Reference <b>Mined zone(s)</b>	Tonnage Mineral resource/reserve category *NI 43-101 compliant Production (years)	Grade & commodity	Contained metals
<b>Faro [61]</b> Cyprus Anvil Mining Corp. and Curragh Resources Ltd. 105K 061	105K/6 62°21'26" N/133°22'23" W 14 km N of town of Faro	<b>Faro Open Pit and Underground</b>  1969–1992 Yukon MINFILE 105K 061	54.283 Mt Production (1969-1993)	3.20% Pb 4.92% Zn 29.1 g/t Ag 0.01 g/t Au Ore grade	3762.8 Mlb Pb 5022.6 Mlb Zn 50.8 Moz Ag 17.5 koz Au Recovered metals
<b>Grizzly [62]</b> (Dy) Site is managed by Assessment and Abandoned Mines, Yukon government 105K 101	105K/3 62°13'47" N/133°07'49" W 12 km E of Faro	<b>DY- Grizzly</b>  1996 Anvil Range Mining Corporation Annual Information Form	17.24 Mt Indicated	4.85% Pb 6.39% Zn 71.6 g/t Ag 0.75 g/t Au	1843.5 Mlb Pb 2428.8 Mlb Zn 39.7 Moz Ag 415.7 koz Au
<b>Swim [63]</b> Site is managed by Assessment and Abandoned Mines, Yukon government 105K 046	105K/3 62°12'43" N/133°02'00" W 17 km E of Faro	<b>Swim</b>  1983 CIM Special Volume 37, p. 319-381.	4.3 Mt Historic calculation	3.8% Pb 4.7% Zn 42 g/t Ag	360.2 Mlb Pb 444.6 Mlb Zn 5.8 Moz Ag
<b>Vangorda [64]</b> Site is managed by Assessment and Abandoned Mines, Yukon government 105K 055	105K/6 62°15'00" N/133°11'19" W 9 km ENE of Faro	<b>Vangorda</b>  1996 Anvil Range Mining Corporation Annual Information Form  <b>Vangorda</b>	165 000 t Proven reserve  4.55 Mt Production (1990-1993)	3.27% Pb 4.14% Zn 43 g/t Ag 1.23 g/t Au  2.48% Pb 3.48% Zn 27.3 g/t Ag Ore grade	11.9 Mlb Pb 15.0 Mlb Zn 0.2 Moz Ag 6.5 koz Au  248.8 Mlb Pb 349.1 Mlb Zn 4.0 Moz Ag Recovered metals
<b>Grum [65]</b> Site is managed by Assessment and Abandoned Mines, Yukon government 105K 056	105K/6 62°16'47" N/133°14'29" W 9 km NE of Faro	<b>Grum</b>  1996 Anvil Range Mining Corporation Annual Information Form	1.589 Mt Proven reserve  17.055 Mt Probable reserve	3.56% Pb 5.34% Zn 58 g/t Ag 0.83 g/t Au  2.6% Pb 4.34% Zn 44 g/t Ag 0.74 g/t Au	124.7 Mlb Pb 187.1 Mlb Zn 3.0 Moz Ag 42.4 koz Au  977.6 Mlb Pb 1631.8 Mlb Zn 24.1 Moz Ag 405.8 koz Au
<b>Tom [66]</b> HudBay Minerals Inc. 105O 001	105O/1 63°09'53" N/130°08'40" W 176 km NE of Ross River	<b>Tom</b>  2007 Technical report by Scott Wilson Roscoe Postle Associates Inc.	4.98 Mt Indicated*  13.55 Mt Inferred*	6.64% Zn 4.36% Pb 47.77 g/t Ag  6.68% Zn 3.10% Pb 31.77 g/t Ag	729.0 Mlb Zn 478.7 Mlb Pb 7.6 Moz Ag  1995.5 Mlb Zn 926.1 Mlb Pb 13.8 Moz Ag
<b>Jason [67]</b> HudBay Minerals Inc. 105O 019	105O/1 63°08'53" N/130°15'53" W 170 km NE of Ross River	<b>Jason</b>  2007 Technical report by Scott Wilson Roscoe Postle Associates Inc.	1.46 Mt Indicated*  11.0 Mt Inferred*	5.25% Zn 7.42% Pb 86.7 g/t Ag  6.75% Zn 3.96% Pb 36.4 g/t Ag	167.8 Mlb Zn 237.2 Mlb Pb 4.0 Moz Ag  1636.9 Mlb Zn 960.3 Mlb Pb 12.9 Moz Ag
<b>Clear Lake [68]</b> Bernie Kreft 105L 045	105L/14 62°47'04" N/135°08'36" W 97 km NE of Carmacks	<b>Clear Lake</b>  2010 Technical report by SRK Consulting Engineers and Scientists Ltd.	7.765 Mt Inferred*	7.60% Zn 1.08% Pb 22 g/t Ag	1281.8 Mlb Zn 182.1 Mlb Pb 5.4 Moz Ag
<b>Mississippi Valley Type</b>					
<b>Mel [69]</b> (Jean) Silver Range Resources Ltd. 095D 005	95D/6 60°21'19" N/127°23'55" W 79 km ENE of Watson Lake	<b>Main zone</b>  2014 Technical report by H. Leo King & Associates Inc. and Giroux Consultants Ltd.	5.380 Mt Inferred*	6.45% Zn 1.85% Pb 44.8% BaSO <sub>4</sub>	765.0 Mlb Zn 219.4 Mlb Pb 2.4 Mt BaSO <sub>4</sub>
<b>Goz [70]</b> (Barrier Reef) Alianza Minerals Ltd. 106C 020	106C/7 64°25'43" N/132°32'47" W 187 km NE of Mayo	<b>Goz</b>  1989 Alianza Minerals Ltd. website	2.893 Mt Historic calculation	11.25% Zn	717.5 Mlb Zn

Table 4. (continued) Yukon LEAD-ZINC deposits

Property [no. on map] (Other names) Owner/optionee Yukon MINFILE occurrence number	NTS Map Sheet Latitude/Longitude (NAD 83) distance from nearest community	Mineralized zone(s) Year resource was calculated Reference <b>Mined zone(s)</b>	Tonnage Mineral resource/reserve category *NI 43-101 compliant <b>Production (years)</b>	Grade & commodity	Contained metals
<b>SKARN/REPLACEMENT</b>					
<b>Polymetallic manto</b>					
<b>McMillan [71]</b> (Quartz Lake) Glencore plc 095D 006	095D/5 60°29'26" N/127°56'34" W 63 km NE of Watson Lake	<b>Main zone</b>  <b>South zone</b>  1991 Assessment report #092920	1.1 Mt Historic calculation  400 000 t Historic calculation	8.3% Zn 4.1% Pb 62.0 g/t Ag  1.7% Zn 9.3% Pb 214 g/t Ag	201.3 Mlb Zn 99.4 Mlb Pb 2.2 Moz Ag  15.0 Mlb Zn 82.0 Mlb Pb 2.8 Moz Ag
<b>Pb-Zn Skarn</b>					
<b>Sa Dena Hes [72]</b> (Mt. Hundere) Teck Resources Ltd. (50%) and Korea Zinc Company Ltd. (50%) 105A 012	105A/10 60°31'04" N/128°52'39" W 51 km N of Watson Lake	<b>Jewelbox and Burnick</b>  2003 Teck Cominco Limited Annual Report  <b>Jewelbox</b>	2.190 Mt Indicated  <b>699 756 t</b> <b>Production (1991-1992)</b>	10.4% Zn 2.6% Pb  <b>18% combined</b> <b>Pb-Zn</b> <b>Ore grade</b>	502.1 Mlb Zn 125.5 Mlb Pb
<b>VEIN/BRECCIA</b>					
<b>Polymetallic veins</b>					
<b>Andrew [73]</b> (Lad) Overland Resources Ltd. (90%)/ 18526 Yukon Inc. (10%) 105K 009	105K/16 62°56'26" N/132°13'55" W 106 km N of Ross River	<b>Andrew</b>   <b>Darcy</b>   <b>Darin</b>  2012 Overland Resources Ltd. Annual Report; JORC Code compliant resource	1.769 Mt Measured  5.437 Mt Indicated  556 000 t Inferred  1.670 Mt Indicated  3.880 Mt Inferred  360 000 t Inferred	5.3% Zn 1.6% Pb  6.1% Zn 1.40 Pb  4.2% Zn 0.6% Pb  4.8% Zn  4.7% Zn  4.0% Zn 0.2% Pb	206.7 Mlb Zn 62.4 Mlb Pb  731.2 Mlb Zn 167.8 Mlb Pb  51.5 Mlb Zn 7.4 Mlb Pb  176.7 Mlb Zn  402.0 Mlb Zn  31.7 Mlb Zn 1.6 Mlb Pb



Sphalerite quartz-carbonate vein crosscutting meta-sandstone from the Andrew zinc property.



Laminated fine-grained sphalerite and galena mineralization from the Selwyn lead-zinc property.



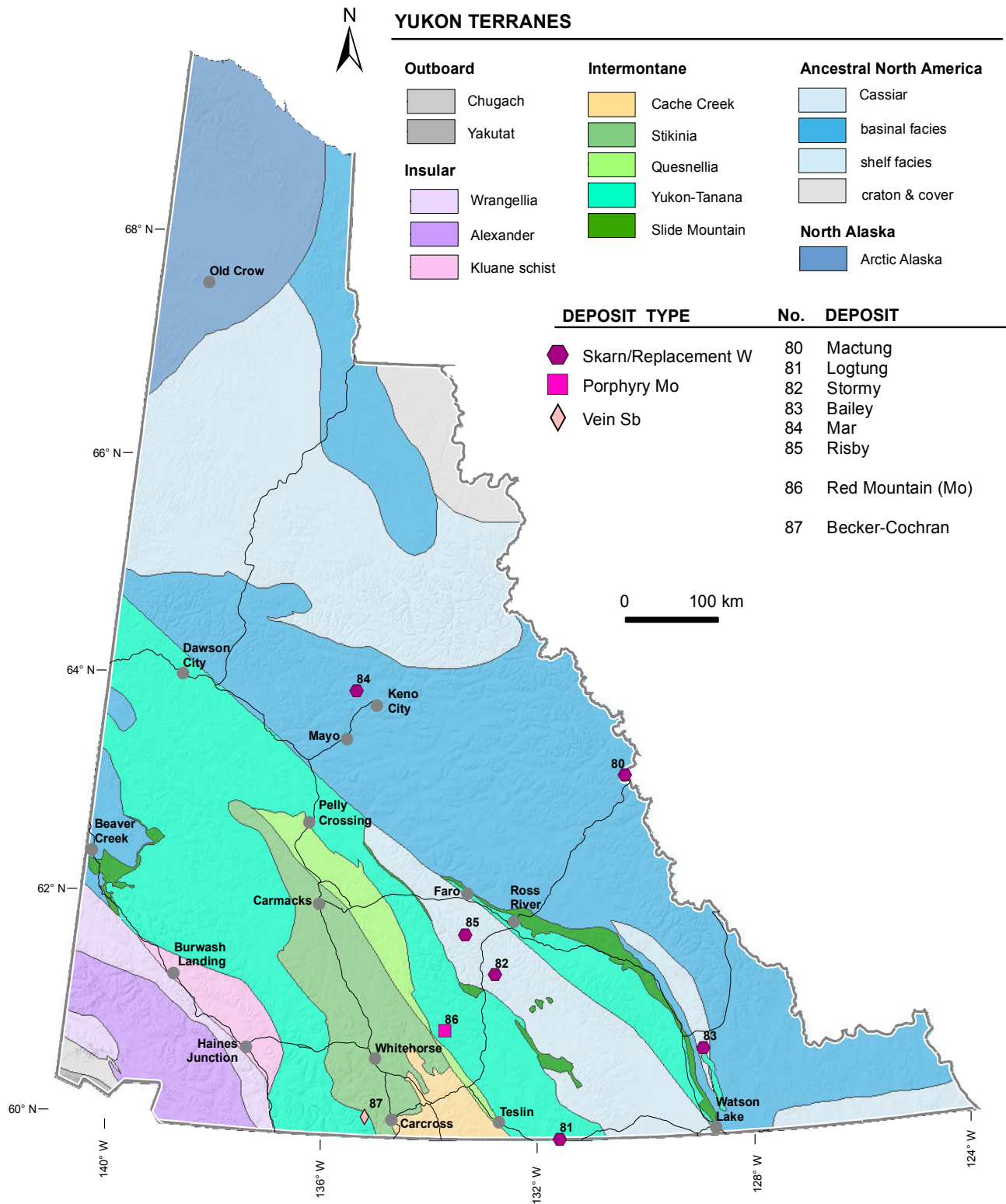
Table 4. (continued) Yukon LEAD-ZINC deposits

Property [no. on map] (Other names) Owner/optionee Yukon MINFILE occurrence number	NTS Map Sheet Latitude/Longitude (NAD 83) distance from nearest community	Mineralized zone(s) Year resource was calculated Reference <b>Mined zone(s)</b>	Tonnage Mineral resource & category *NI 43-101 compliant <b>Production (years)</b>	Grade & commodity	Contained metals
<b>Kudz Ze Kayah [76]</b> (ABM, Tag) BMC Minerals (No. 1) Ltd. 105G 117	105G/7 61°27'29" N/130°36'36" W 112 km SE of Ross River	<b>ABM</b>  2006 Teck Cominco Annual Report	12.8 Mt Inferred	5.9% Zn 1.7% Pb 0.8% Cu 1.38 g/t Au	1664.9 Mlb Zn 479.7 Mlb Pb 228.6 Mlb Cu 567.9 koz Au
<b>Matt Berry [77]</b> Golden Predator Mining Corp 105H 021	105H/6 61°28'32" N/129°24'14" W 161 N of Watson Lake	<b>Core zone</b>  1977 Assessment report #061798	533 425 t Historic calculation	6.1% Pb 4.6% Zn 102.9 g/t Ag	71.7 Mlb Pb 54.1 Mlb Zn 1.8 Moz Ag
<b>Marg [78]</b> Minquest Ltd. 106D 009	106D/1 64°00'21" N/134°28'01" W 83 km NE of Mayo	<b>Marg</b>  2015 Prepared by IMC Mining Pty Ltd. for Minquest using 2012 JORC guidelines. October 6, 2015 news release	3.7 Mt Indicated*  6.1 Mt Inferred*	1.5% Cu 3.8% Zn 2.0% Pb 48 g/t Ag 0.76 g/t Au  1.2% Cu 3.4 % Zn 1.7% Pb 44 g/t Ag 0.74 g/t Au	122.3 Mlb Cu 310.0 Mlb Zn 163.1 Mlb Pb 5.7 Moz Ag 90.4 koz Au  161.4 Mlb Cu 457.2 Mlb Zn 228.6 Mlb Pb 8.6 Moz Ag 145.1 koz Au
<b>GP4F [79]</b> BMC Minerals (No. 1) Ltd. 105G 143	105G/7 61°26'43" N/130°30'38" W 118 km SE of Ross River	<b>GP4F</b>  1998 Teck Cominco Annual Report	1.5 Mt Inferred	0.1% Cu 3.1% Pb 6.4% Zn 90.0 g/t Ag 2.00 g/t Au	3.3 Mlb Cu 102.5 Mlb Pb 211.6 Mlb Zn 4.3 Moz Ag 96.5 koz Au



Kudz Ze Kayah property - Late season diamond drilling on the ABM deposit.

# Yukon Tungsten, Molybdenum and Antimony Deposits



**Table 5. Yukon TUNGSTEN deposits**

Property [no. on map] (Other names) Owner/optionee Yukon MINFILE occurrence number	NTS Map Sheet Latitude/Longitude (NAD 83) distance from nearest community	Mineralized zone(s) Year resource was calculated Reference	Tonnage Mineral resource/reserve category *NI 43-101 compliant	Grade & commodity	Contained metals
<b>SKARN/REPLACEMENT</b>					
<b>Mactung [80]</b> North American Tungsten Ltd. 105O 002	105O/8 63°16'56" N/130°9'9" W 201 km NE of Faro	<b>Mactung</b>  2009 Technical report by Wardrop	33.029 Mt Indicated*  11.857 Mt Inferred*	0.88% WO <sub>3</sub>  0.78% WO <sub>3</sub>	639.3 Mlb WO <sub>3</sub>  202.8 Mlb WO <sub>3</sub>
<b>Logtung [81]</b> Largo Resources Ltd. 105B 039	105B/4 60°0'19" N/131°35'52" W 65 km E of Teslin	<b>Logtung</b>  2011 Technical report by AMC Consultants (Canada) Ltd.	223.4 Mt Measured and Indicated*  201.2 Mt Inferred*	0.102% WO <sub>3</sub> 0.029% Mo  0.089% WO <sub>3</sub> 0.024% Mo	500.1 Mlb WO <sub>3</sub> 143.9 Mlb Mo  393.1 Mlb WO <sub>3</sub> 107.7 Mlb Mo
<b>Stormy [82]</b> E-Energy Ventures Ltd. 105F 011	105F/7 61°29'50" N/132°48'10" W 57 km SW of Ross River	<b>Stormy</b>  1959 Assessment report #060692	15 268 t Historic calculation	1.05% WO <sub>3</sub> 0.73% Mo	0.4 Mlb WO <sub>3</sub> 0.2 Mlb Mo
<b>Bailey [83]</b> unknown 105A 017	105A/15 60°47'12" N/128°51'8" W 80 km N of Watson Lake	<b>Bailey</b>  1988 Assessment report #092120	404 600 t Historic calculation	0.99% WO <sub>3</sub>	8.8 Mlb WO <sub>3</sub>
<b>Mar [84]</b> (Mar-Tungsten) Victoria Gold Corp. 106D 027	106D/4 64°1'40" N/135°45'4" W 50 km N of Mayo	<b>Mar-Tungsten</b>  2008 Technical report by SRK Consulting Ltd.	12.7 Mt Indicated*  1.3 Mt Inferred*	0.31% WO <sub>3</sub>  0.30% WO <sub>3</sub>	86.2 Mlb WO <sub>3</sub>  8.9 Mlb WO <sub>3</sub>
<b>Risby [85]</b> Playfair Mining Ltd. 105F 045	105F/14 61°51'35" N/133°23'4" W 52 km W of Ross River	<b>Risby</b>  2009 Technical Report by PEG Mining Consultants Inc.	8.537 Mt Inferred*	0.475% WO <sub>3</sub>	89.4 Mlb WO <sub>3</sub>

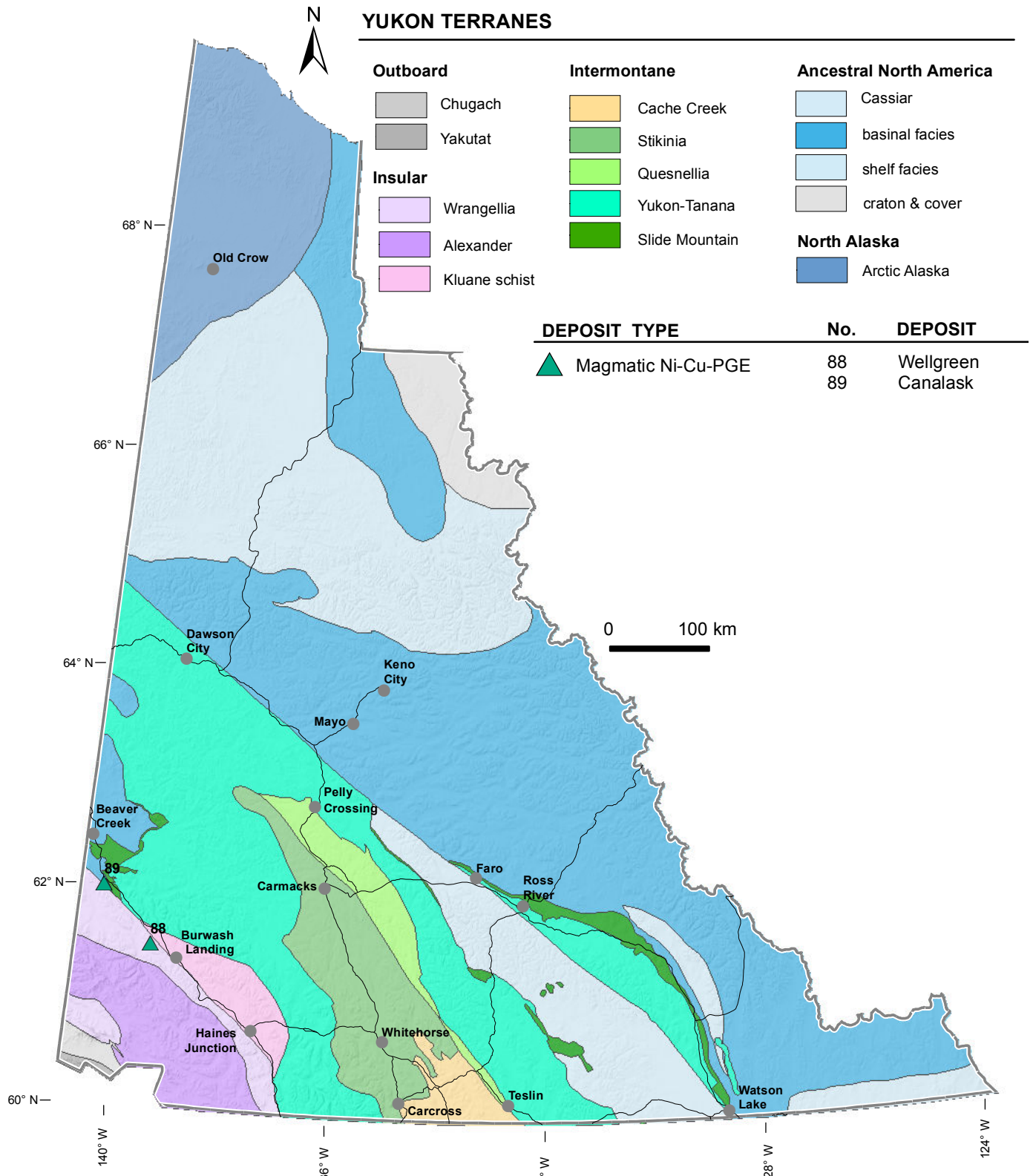
**Table 6. Yukon MOLYBDENUM deposits**

Property [no. on map] (Other names) Owner/optionee Yukon MINFILE occurrence number	NTS Map Sheet Latitude/Longitude (NAD 83) distance from nearest community	Mineralized zone(s) Year resource was calculated Reference	Tonnage Mineral resource/reserve category *NI 43-101 compliant	Grade & commodity	Contained metals
<b>PORPHYRY/SHEETED VEIN</b>					
<b>Porphyry Mo</b>					
<b>Red Mountain [86]</b> Tintina Mines Ltd. 105C 009	105C/13 60°59'21" N/133°44'58" W 77 km ENE of Whitehorse	<b>Red Mountain</b>  1982 Tintina Mines press release, November 18, 2011	187.3 Mt Historic calculation	0.176% Mo	726.7 Mlb Mo

**Table 7. Yukon ANTIMONY deposits**

Property [no. on map] (Other names) Owner/optionee Yukon MINFILE occurrence number	NTS Map Sheet Latitude/Longitude (NAD 83) distance from nearest community	Mineralized zone(s) Year resource was calculated Reference	Tonnage Mineral resource/reserve category *NI 43-101 compliant	Grade & commodity	Contained metals
<b>VEIN/BRECCIA</b>					
<b>Becker-Cochran [87]</b> New Pacific Metals Corp. 105D 027	105D/3 60°11'5" N/135°12'54" W 60 km S of Whitehorse	<b>Becker-Cochran</b>  1974 Assessment report #091820	127 007 t Historic calculation	4.0% Sb	11.2 Mlb Sb

# Yukon Ni-Cu-PGE Deposits



**Table 8. Yukon NICKEL-COPPER-PLATINUM GROUP ELEMENT (PGE) deposits**

Property [no. on map] (Other names) Owner/optionee Yukon MINFILE occurrence number	NTS Map Sheet Latitude/Longitude (NAD 83) distance from nearest community	Mineralized zone(s) Year resource was calculated Reference <b>Mined zone(s)</b>	Tonnage Mineral resource/reserve category *NI 43-101 compliant <b>Production (years)</b>	Grade & commodity	Contained metals
<b>MAFIC/ULTRAMAFIC ASSOCIATED</b>					
<b>Magmatic Ni-Cu-PGE</b>					
<b>Wellgreen [88]</b> Wellgreen Platinum Ltd. 115G 024	115G/5 61°27'55" N/139°31'39" W 31 km NW of Burwash Landing	<b>Wellgreen</b>  2012 Preliminary Economic Assessment by Tetra-Tech Wardrop       <b>Wellgreen</b>	329.569 Mt Measured and Indicated*       846.389 Mt Inferred*       <b>171 652 t</b> <b>Production (1972 - 1973)</b>	0.26% Ni 0.14% Cu 0.015% Co 0.24 g/t Pt 0.24 g/t Pd 0.045 g/t Au          <b>grade not available</b>	1896.4 Mlb Ni 1024.5 Mlb Cu 109.0 Mlb Co 2.5 Moz Pt 2.5 Moz Pd 476.8 koz Au          <b>5.5 Mlb Ni</b> <b>4.9 Mlb Cu</b> <b>Recovered metals</b>
<b>Canalask [89]</b> (Micro) Victoria Gold Corp. 115F 045	115F/15 61°57'11" N/140°32'16" W 106 km NW of Burwash Landing	<b>Main zone</b>  1968 Assessment report #093256	390 235 t Historic calculation	1.35% Ni	11.6 Mlb Ni

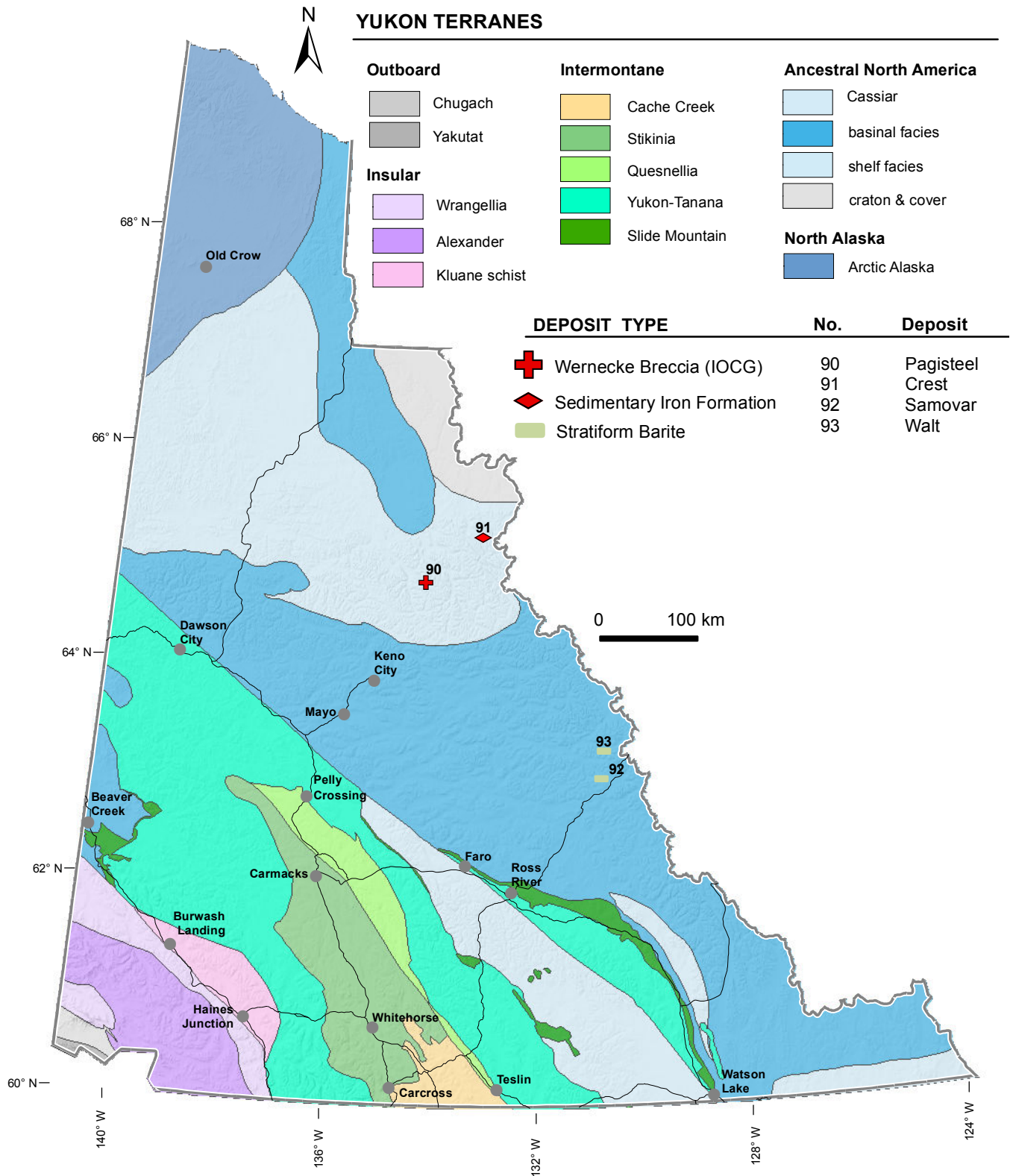


*Massive sulphide in drill core, Wellgreen property.*



*Net-textured sulphides in drill core, Wellgreen property.*

# Yukon Iron and Barite Deposits



**Table 9. Yukon IRON deposits**

Property [no. on map] (Other names) Owner/optionee Yukon MINFILE occurrence number	NTS Map Sheet Latitude/Longitude (NAD 83) distance from nearest community	Mineralized zone(s) Year resource was calculated Reference	Tonnage Mineral resource/reserve category *NI 43-101 compliant	Grade & commodity	Contained metals
<b>VEIN/BRECCIA</b>					
<b>Wernecke Breccia (Iron oxide Copper and Gold)</b>					
<b>Pagisteel [90]</b> Pitchblack Resources Ltd. and Mega Uranium Ltd. 106D 049	106D/16 64°50'3" N/134°16'57" W 160 km NE of Mayo	<b>Pagisteel</b>  1978 CIM Bulletin, August, 1978, p. 56	1.0 Mt Historic calculation	29.20% Fe	643.7 Mlb Fe
<b>SEDIMENT ASSOCIATED</b>					
<b>Iron Formation</b>					
<b>Crest [91]</b> Chevron Canada Ltd. 106F 008	106F/6 65°15'8" N/133°2'22" W 230 km NE of Mayo	<b>Iron Creek Area</b>  2006 Technical Report by Hatch Associated Ltd.	11 196.3 Mt unknown	43.82% Fe	10,816.4 Blb Fe

**Table 10. Yukon BARITE deposits**

Property [no. on map] (Other names) Owner/optionee Yukon MINFILE occurrence number	NTS Map Sheet Latitude/Longitude (NAD 83) distance from nearest community	Mineralized zone(s) Year resource was calculated Reference	Tonnage Mineral resource/reserve category *NI 43-101 compliant	Grade & commodity	Contained metals
<b>SEDIMENT ASSOCIATED</b>					
<b>Stratiform barite (± Zn, ± Pb)</b>					
<b>Samovar [92]</b> (Tea) H. Coyne and Sons Ltd. 105O 020	105O/2 63°1'22" N/130°36'26" W 150 km NE of Ross River	<b>Tea (Open Pit)</b>  1984 Assessment report #092039	377 038 t Historic calculation	92.5% BaSO <sub>4</sub>	768.9 Mlb BaSO <sub>4</sub>
<b>Walt [93]</b> (Bar) Carlin Gold Corp. 105O 021	105O/7 63°16'56" N/130°32'18" W 186 km NE of Faro	<b>Cathy Deposit</b>  2000 Assessment report #094084	450 000 t Historic calculation	Reported as Barite resource with a specific gravity of 4.25 g/cc	



*Interbedded jasper and specular hematite from the Crest iron deposit.*



*Resistant jasper outcrop at the Crest iron property.*

## REFERENCES

Annual, technical and other reports are available online from various websites and/or from SEDAR (system for electronic document analysis and retrieval) at [www.sedar.com](http://www.sedar.com).

Yukon Mineral Assessment (YMA) reports may be downloaded from the Energy Mines, and Resources (EMR) Library catalogue website at <http://virtua.gov.yk.ca:8080/?theme=emr>, or viewed at the EMR Library, 335-300 Main St., Whitehorse, Yukon. Additional information regarding this collection can be obtained by contacting the EMR library at (867) 667-3111 or [emrlibrary@gov.yk.ca](mailto:emrlibrary@gov.yk.ca).

Canadian Institute of Mining and Metallurgy and Petroleum (CIM), 2000. CIM standards on Mineral Resources and Reserves – Definitions and Guidelines. CIM Standing Committee on Reserve Definitions.

Canadian Securities Administrators, 2012. National Instrument 43-101: Standards of Disclosure for Mineral Projects (NI 43-101).

Colpron, M. (compiler), 2015. Update of Yukon Bedrock Geology Map, Yukon Geological Survey, <[www.geology.gov.yk.ca](http://www.geology.gov.yk.ca)> [accessed October 2015].

Special Committee of the Canadian Institute of Mining and Metallurgy and Petroleum on Valuation of Mineral Properties (CIMVAL), 2003. Standards and Guidelines for Valuation of Mineral Properties, CIM, 33 p.

Yukon MINFILE, 2015. Yukon MINFILE – A database of mineral occurrences. Yukon Geological Survey, <[www.geology.gov.yk.ca](http://www.geology.gov.yk.ca)> [accessed October 2015].

## INDEX TO DEPOSIT PAGES

Number in square brackets [ ] refers to number on map; preceeding page number is the associated map location.

Andrew [73].....	16,19	Logjam [42].....	8,10
Antoniuk [6].....	2,4	Logtung [81].....	22,23
Bailey [83].....	22,23	Lonestar [26].....	2,7
Becker-Cochran [87].....	22,23	Lucky Queen [34].....	8,9
Bellekeno [32].....	8,9	Mactung [80].....	22,23
Bermingham [36].....	8,10	Mar [84].....	22,23
Best Chance [55].....	12,15	Marg [78].....	16,21
Big Thing [21].....	2,6	Marn [8].....	2,4
Blende [48].....	8,11	Matt Berry [77].....	16,21
Brewery Creek [3].....	2,3	McMillan [71].....	16,19
Brown-McDade [15].....	2,5	Mel [69].....	16,18
Canalask [89].....	24,25	Minto [52].....	12,14
Carmacks Copper [53].....	12,14	Mount Nansen [14].....	2,5
Cash [51].....	12,13	Nadaleen Trend [28].....	2,7
Casino [50].....	12,13	Nucleus [16].....	2,5
Clark [30].....	8,9	Onek [35].....	8,10
Clear Lake [68].....	16,18	Pagisteel [90].....	26,27
Coffee [24].....	2,6	Peso [43].....	8,10
Cowley Park [56].....	12,15	Pike [44].....	8,10
Craig [46].....	8,11	Plata [38].....	8,10
Crest [91].....	26,27	QV [25].....	2,7
Dublin Gulch [2].....	2,3	Red Mountain Au [4].....	2,3
Faro [61].....	16,18	Red Mountain Mo [86].....	22,23
Flame & Moth [33].....	8,9	Revenue [5].....	2,4
Fyre [57].....	12,15	Risby [85].....	22,23
Goddell [10].....	2,4	Sa Dena Hes [72].....	16,19
Goz [70].....	16,18	Samovar [92].....	26,27
GP4F [79].....	16,21	Silver Hart [31].....	8,9
Grew Creek [18].....	2,5	Skukum [17].....	2,5
Grizzly [62].....	16,18	Skukum Creek [11].....	2,4
Groundhog [41].....	8,10	Stormy [82].....	22,23
Grum [65].....	16,18	Swim [63].....	16,18
Guder [9].....	2,4	Tiger [27].....	2,7
Hart River [58].....	12,15	Tinta Hill [20].....	2,6
Hasselberg [75].....	16,20	Tintina [29].....	8,9
Howard's Pass [60].....	16,17	Tom [66].....	16,18
Hyland Gold [1].....	2,3	Val [40].....	8,10
Ice [59].....	12,15	Vangorda [64].....	16,18
Jason [67].....	16,18	Venus [19].....	2,5
Keg [37].....	8,10	Vera [39].....	8,10
Keno Hill District.....	9	Walt [93].....	26,27
Ketza [7].....	2,4	Wellgreen [88].....	24,25
Ketzakey [45].....	8,10	Wheaton Mountain [12].....	2,4
Klaza [22].....	2,6	White Gold [23].....	2,6
Kudz Ze Kayah [76].....	16,21	Whitehorse Copper Belt [54].....	12,15
Laforma [13].....	2,4	Wolverine [74].....	16,20
Logan [47].....	8,11	Zeta [49].....	8,11

