



YUKON

Mineral Deposits Summary 2023

Published under the authority of the Minister of Energy, Mines and Resources, Government of Yukon
Printed in Whitehorse, Yukon, 2023.

Publié avec l'autorisation du Ministère de l'Énergie, des Mines et des Ressources du gouvernement du Yukon
Imprimé à Whitehorse (Yukon) en 2023.

ISSN 1499-8092

© Energy Mines, and Resources, Government of Yukon

This and other Yukon Geological Survey (YGS) publications are available from:

Yukon Geological Survey
Box 2703 (K-102)
Whitehorse, Yukon Y1A 2C6

Inquiries may also be directed to geology@yukon.ca.

YGS publications may be downloaded at <https://yukon.ca/en/science-and-natural-resources/geology>.

In referring to this publication, please use the following citation:

Yukon Geological Survey, 2023. Yukon Mineral Deposits Summary 2023. Yukon Geological Survey, 18 p.

Cover photo: realgar and orpiment veins from Hecla Mining Company's recently acquired Osiris deposit in central Yukon.



Yukon Mineral Deposits Summary 2023

Table of Contents

Introduction	1
Conversion factors	1
Units of measure abbreviations	1
Summary of contents	1
Projects with a compliant mineral deposit calculation	2-10
Projects with a historical mineral deposit calculation	12-16

Introduction

This publication is intended as a snapshot of the hard rock mineral resources of Yukon. It is up-to-date as of December 1, 2023.

The tables herein have been compiled from information derived from Yukon MINFILE – A database of mineral occurrences, and from various technical reports and information filed in SEDAR (system for electronic document analysis and retrieval).

This document does not include cut-off grades for resources and reserves. Numbers have been rounded for readability. Tonnages and grade are provided in metric measure – converted from imperial as required. Total contained metals are estimated as a result of tonnage multiplied by grade; reported values are converted to either metric or imperial as required. Amounts are for all deposits/zones on the property.

Deposit resources are identified as being compliant with either the minimum requirement for mineral resources and reserves as defined by the Canadian National Instrument for the standards of disclosure for mineral projects (NI 43-101), the Australasian code for reporting of Exploration Results, Mineral Resources and Ore Reserves (JORC) standards or the disclosure requirements for the mining companies in the United States, in accordance to the Securities and Exchange Commission Industry Guide 7 (S-K 1300). Deposits that are not compliant with these definitions are identified as historical estimates.

The Owner/optionee indicate the company owner as stated in the resource estimate or on the company website. In the case of historical resource calculations where there is no resource estimate or website available, the owner is the registered quartz claim holder.

The reader is encouraged to refer to the original reference for detailed information. We accept no responsibility for any errors or omissions.

Conversion Factors

1 tonne = 1.10123 tons

1 g = 0.032150747 troy ounces

1 kg = 2.20462262 pounds

1 g/t = 0.029166679 troy ounces per ton

1 Moz Au = 31.1 tonnes Au = 31,100 kg Au

Units of measure abbreviations

Grade units

% = percent

g/t = grams per tonne

Metric system mass units

kg = kilograms

t = tonnes

kt = thousand tonnes

Mt = million tonnes

Imperial system mass units

oz = troy ounces

Koz = thousand troy ounces

Moz = million troy ounces

Klbs = thousand pounds

MIlbs = million pounds

Blbs = billion pounds

Summary of contents

This publication includes:

- two colour maps and legends: one for projects with compliant resource calculations and the other for projects with historical resources; and
- two tables of mineral deposits organized alphabetically: one table for compliant resource calculations and the other for historical.

Each table contains:

- name of project;
- deposit type;
- owner and optionee (if applicable);
- date resource was calculated;
- mineralized zone(s);
- Yukon MINFILE number;
- Material (if specified) and Category;
- tonnage;
- grade/commodity; and
- contained metals.

Projects with a compliant mineral deposit calculation

Yukon Terranes

Outboard

YA Yakutat

CG Chugach

Insular

KS Klauane, Windy

PE Peninsular

WR Wrangellia

AX Alexander

BC Bear Creek

Arctic

AAns Arctic Alaska (N Slope)

Intermontane

CC Cache Creek

AT Atlin

ST Stikinia

QN Quesnellia

YT Yukon-Tanana

SM Slide Mountain

Ancestral North America

CA Cassiar

NAb Laurentia (offshelf)

NAp Laurentia (shelf)

NAc Laurentia (craton/cover)

— Fault

Infrastructure

★ Capital city

○ Community

— Primary highway

— Secondary highway

— Power line

Critical minerals

● Ni ± (Cu, PGE)

1 Nickel Shāw

● Cu ± (Au, Mo)

2 Casino

3 Minto

4 Carmacks Copper

5 Fyre Lake

● W

6 Wolf (Mar)

7 Mactung

8 Risby

9 Northern Dancer

● Pb-Zn ± (Ag, Cu)

10 Marg

11 Clear Lake

12 Yukon Base Metal Project

13 Macpass (Macmillan Pass)

14 Selwyn

15 Wolf (Hasselberg)

16 Kudz Ze Kayah

17 Wolverine

18 Mel

Precious metals

□ Ag ± (Pb, Zn)

19 Keno Hill Silver District

20 Blende

21 Silver Range (Keg)

22 Silver Hart

23 Logan

■ Au ± Ag

24 Lone Star

25 Brewery Creek

26 Clear Creek

27 Red Mountain

28 Dublin Gulch

29 AurMac

30 Raven

31 Rau

32 Osiris

33 QV

34 White Gold

35 Coffee

36 Freegold Mountain

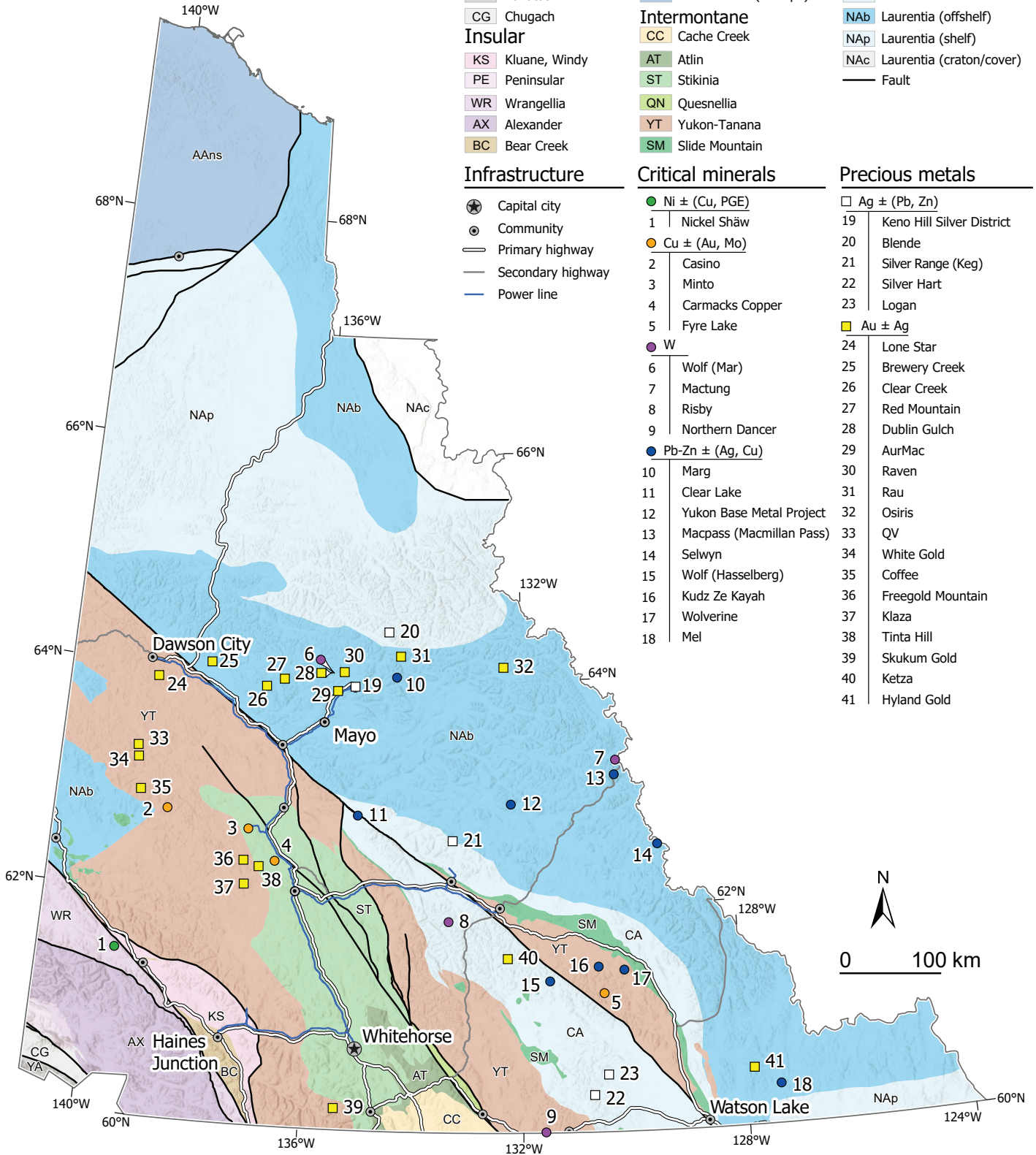
37 Klaza

38 Tinta Hill

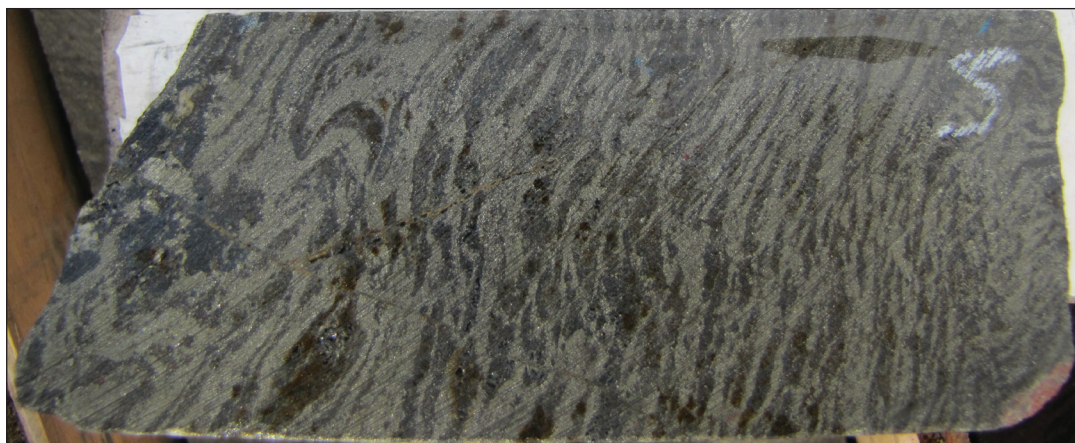
39 Skukum Gold

40 Ketzta

41 Hyland Gold



Project [map number] Deposit type Owner/optionee Date of reference	Mineralized zone Yukon MINFILE number	Material (if specified) and Category	Tonnes	Grade	Contained metals	
					Metric	Imperial
Compliant resource calculations						
AurMac [29] Intrusion-related Banyan Gold Corp. 2023-07-07	Airstrip 105M 088 Aurex Hill 105M 151 Powerline 105M 089	Inferred	312.9 Mt	0.62 g/t Au	193.0 t Au	6.2 Moz Au
Blende [20] Mississippi Valley-type Blende Silver Corp. 2021-06-29	West (Main) 106D 064	Indicated	4.6 Mt	30.32 g/t Ag 1.63 % Pb 1.82 % Zn	140.8 t Ag 75.7 kt Pb 84.5 kt Zn	4.5 Moz Ag 166.8 Mlbs Pb 186.3 Mlbs Zn
		Inferred	42.2 Mt	27.48 g/t Ag 1.62 % Pb 1.83 % Zn	1.2 kt Ag 684.3 kt Pb 773.0 kt Zn	37.3 Moz Ag 1.5 Blbs Pb 1.7 Blbs Zn
Brewery Creek [25] Intrusion-related Victoria Gold Corp. 2020-01-13	Blue 105K 075 Bohemian 116B 200 Canadian 116B 194 Classic 116B 204 East Big Rock 116B 186 Golden 116B 198 Kokanee 116B 197 Lower Fosters 116B 195 Lucky 116B 199 Moosehead 116B 191 North Slope 116B 192 Pacific 116B 189 Schooner 116B 201 Sleeman 116B 203 Upper Fosters 116B 196 West Big Rock 116B 185	Oxide Indicated	21.1 Mt	1.13 g/t Au	23.8 t Au	765.2 Koz Au
		Inferred	14.1 Mt	0.97 g/t Au	13.7 t Au	440.1 Koz Au
		Sulphide Inferred	8.6 Mt	0.99 g/t Au	8.5 t Au	272.1 Koz Au



Banded sphalerite from the Kudz Ze Kayah deposit.

Project [map number] Deposit type Owner/optionee Date of reference	Mineralized zone Yukon MINFILE number	Material (if specified) and Category	Tonnes	Grade	Contained metals	
					Metric	Imperial
Compliant resource calculations						
Carmacks Copper [4] Porphyry Granite Creek Copper Ltd. 2023-01-19	Zone 1 115I 008	Oxide Measured + Indicated	15.7 Mt	0.37 g/t Au 3.91 g/t Ag 0.95 % Cu 0.01 % Mo	5.8 t Au 61.3 t Ag 148.5 kt Cu 1.6 kt Mo	185.1 Koz Au 2.0 Moz Ag 327.3 Mlbs Cu 3.5 Mlbs Mo
	Zone 4 115I 063					
	Zone 7 115I 103	Inferred	216.0 kt	0.09 g/t Au 2.44 g/t Ag 0.52 % Cu 0.01 % Mo	19.4 kg Au 527.0 kg Ag 1.1 kt Cu 21.6 t Mo	625.0 oz Au 16.9 Koz Ag 2.5 Mlbs Cu 47.6 Klbs Mo
	Zone 2000S 115I 131					
Zone 12 115I 129	Sulphide Measured + Indicated	20.6 Mt	0.18 g/t Au 2.75 g/t Ag 0.71 % Cu 0.02 % Mo	3.7 t Au 56.6 t Ag 147.1 kt Cu 4.0 kt Mo	120.1 Koz Au 1.8 Moz Ag 324.2 Mlbs Cu 8.8 Mlbs Mo	
Zone 13 115I 130						Inferred
Casino [2] Porphyry Western Copper and Gold Corp. 2022-08-08	Casino 115J 028	Oxide Measured + Indicated	231.7 Mt	0.28 g/t Au 1.89 g/t Ag 0.04 % Cu	63.7 t Au 437.2 t Ag 97.0 kt Cu	2.0 Moz Au 14.1 Moz Ag 213.9 Mlbs Cu
		Sulphide and mixed Measured + Indicated	2259 Mt	0.17 g/t Au 1.45 g/t Ag 0.15 % Cu 0.02 % Mo	393.3 t Au 3.3 kt Ag 3.4 Mt Cu 351.9 kt Mo	12.6 Moz Au 104.9 Moz Ag 7.5 Blbs Cu 775.8 Mlbs Mo
Clear Creek [26] Intrusion-related Sitka Gold Corp. 2023-01-19	Blackjack 115P 075	Inferred	61.1 Mt	0.68 g/t Au	41.7 t Au	1.3 Moz Au
	Eiger 115P 074					
Clear Lake [11] Clastic-dominated massive sulphide Honey Badger Silver Inc. 2010-02-16	Clear Lake Deposit 105L 045	Inferred	7.8 Mt	22.0 g/t Ag 1.08 % Pb 7.6 % Zn	170.8 t Ag 83.9 kt Pb 590.1 kt Zn	5.5 Moz Ag 184.9 Mlbs Pb 1.3 Blbs Zn
Coffee [35] Orogenic Newmont Corporation 2022-12-31	Coffee 115J 110	Measured + Indicated	53.9 Mt	1.23 g/t Au	66.3 t Au	2.2 Moz Au
		Inferred	7.2 Mt	1.01 g/t Au	7.3 t Au	230 Koz Au
Dublin Gulch [28] Intrusion-related Victoria Gold Corp. 2023-04-10	Eagle 105B 141	Measured + Indicated	244.8 Mt	0.59 g/t Au 0.12 g/t Ag	145.0 t Au 28.1 t Ag	4.7 Moz Au 902.8 Koz Ag
	Olive 106D 127					
	Shamrock 106D 127	Inferred	35.5 Mt	0.62 g/t Au 0.34 g/t Ag	21.9 t Au 12.1 t Ag	703.5 Koz Au 389.3 Koz Ag

Project [map number] Deposit type Owner/optionee Date of reference	Mineralized zone Yukon MINFILE number	Material (if specified) and Category	Tonnes	Grade	Contained metals	
					Metric	Imperial
Compliant resource calculations						
Freegold Mountain [36] Porphyry Triumph Gold Corp. 2020-02-11	Nucleus 115I 107 Revenue 115I 042	Indicated	42.4 Mt	0.58 g/t Au 1.16 g/t Ag 0.08 % Cu 0.01 % Mo	24.5 t Au 49.1 t Ag 35.4 kt Cu 2.3 kt Mo	787.1 Koz Au 1.6 Moz Ag 78.0 Mlbs Cu 5.0 Mlbs Mo
		Inferred	36.9 Mt	0.52 g/t Au 2.03 g/t Ag 0.27 % Cu 0.01 % Mo	19.2 t Au 74.8 t Ag 100.7 kt Cu 2.7 kt Mo	618.5 Koz Au 2.4 Moz Ag 222.0 Mlbs Cu 6.1 Mlbs Mo
Fyre Lake [5] Volcanogenic massive sulphide BMC Minerals Ltd. 2018-02-25	Kona 105G 034	Indicated	3.0 Mt	0.72 g/t Au 3.8 g/t Ag 1.44 % Cu	2.2 t Au 11.4 t Ag 43.2 kt Cu	69.4 Koz Au 366.5 Koz Ag 95.2 Mlbs Cu
		Inferred	7.5 Mt	0.59 g/t Au 3.96 g/t Ag 1.68 % Cu	4.4 t Au 29.7 t Ag 126.3 kt Cu	141.8 Koz Au 954.9 Koz Ag 278.4 Mlbs Cu
Hyland Gold [41] Intrusion-related Banyan Gold Corp. 2018-05-01	Main Zone 095D 011	Indicated	8.6 Mt	0.78 g/t Au 7.04 g/t Ag	6.7 t Au 60.8 t Ag	216.6 Koz Au 2.0 Moz Ag
		Inferred	10.8 Mt	0.77 g/t Au 5.32 g/t Ag	8.3 t Au 57.4 t Ag	267.0 Koz Au 1.8 Moz Ag
Keno Hill Silver District [19] Epithermal Hecla Mining Company 2022-12-31	Bellekeno 105M 082 Birmingham 105M 086 Flame & Moth 105M 087 Lucky Queen 105M 085 Onek 105M 084	Probable	2.0 Mt	0.21 g/t Au 771.43 g/t Ag 2.4 % Pb 2.2 % Zn	410.0 kg Au 1.5 kt Ag 47.8 kt Pb 43.9 kt Zn	13.2 Koz Au 49.4 Moz Ag 105.5 Mlbs Pb 96.7 Mlbs Zn
		Indicated	3.7 Mt	0.24 g/t Au 274.29 g/t Ag 1.0 % Pb 4.0 % Zn	884.2 kg Au 1.0 kt Ag 36.8 kt Pb 143.4 kt Zn	28.4 Koz Au 32.5 Moz Ag 81.2 Mlbs Pb 324.9 Mlbs Zn
		Inferred	2.2 Mt	0.1 g/t Au 356.57 g/t Ag 0.9 % Pb 2.1 % Zn	227.77 kg Au 789.6 t Ag 19.9 kt Pb 46.5 kt Zn	7.3 Koz Au 25.4 Moz Ag 43.9 Mlbs Pb 102.5 Mlbs Zn
Ketza [40] Manto Under Care and Maintenance with Assessment and Abandoned Mines Yukon 2011-06-28	Gully 105F 156 Knoll 105F 162 Hoodoo 105F 155 Peel - Break 105F 160 Penguin 105F 153 QB 105F 157 Tarn 105F 152	Oxide Measured + Indicated	952.2 kt	5.57 g/t Au	5.3 t Au	170.6 Koz Au
		Inferred	199.2 kt	4.45 g/t Au	887.3 kg Au	28.5 Koz Au
		Sulphide and mixed Measured + Indicated	1.4 Mt	5.39 g/t Au	7.7 t Au	247.7 Koz Au
		Inferred	254.6 kt	4.75 g/t Au	1.2 t Au	38.9 Koz Au
Klaza [37] Epithermal Rockhaven Resources Ltd. 2020-07-10	Central BRX 115I 150 Central Klaza 115I 067 Western BRX 115I 216 Western Klaza 115I 218	Indicated	4.5 Mt	4.79 g/t Au 98.09 g/t Ag 0.74 % Pb 0.94 % Zn	21.3 t Au 437.2 t Ag 33.1 kt Pb 41.7 kt Zn	685.7 Koz Au 14.1 Moz Ag 73.0 Mlbs Pb 92.0 Mlbs Zn
		Inferred	5.7 Mt	2.77 g/t Au 75.77 g/t Ag 0.61 % Pb 0.72 % Zn	15.8 t Au 432.9 t Ag 34.6 kt Pb 41.0 kt Zn	508.5 Koz Au 13.9 Moz Ag 76.4 Mlbs Pb 90.3 Mlbs Zn

Project [map number] Deposit type Owner/optionee Date of reference	Mineralized zone Yukon MINFILE number	Material (if specified) and Category	Tonnes	Grade	Contained metals	
					Metric	Imperial
Compliant resource calculations						
Kudz Ze Kayah [16] Volcanogenic massive sulphide BMC Minerals Ltd. 2020-11-30 ¹ 2016-5-19 ²	ABM¹ 105G 154 Krakatoa¹ 105G 155 GP4F² 105G 143	Indicated	18.3 Mt	1.4 g/t Au 147.91 g/t Ag 0.92 % Cu 1.91 % Pb 6.31 % Zn	25.6 t Au 2.7 kt Ag 169.0 kt Cu 349.6 kt Pb 1.2 Mt Zn	823.7 Koz Au 87.0 Moz Ag 372.6 Mlbs Cu 770.7 Mlbs Pb 2.5 Blbs Zn
		Inferred	2.5 Mt	1.06 g/t Au 97.56 g/t Ag 0.47 % Cu 2.3 % Pb 6.46 % Zn	2.6 t Au 243.9 t Ag 11.7 kt Cu 57.4 kt Pb 161.5 kt Zn	84.3 Koz Au 7.8 Moz Ag 25.8 Mlbs Cu 126.5 Mlbs Pb 356.0 Mlbs Zn
Logan [23] Epithermal Almadex Minerals Ltd. 2023-01-17	Main 105B 099	Indicated	2.6 Mt	23.1 g/t Ag 5.1 % Zn	60.5 t Ag 133.6 kt Zn	1.9 Moz Ag 294.6 Mlbs Zn
		Inferred	16.9 Mt	18.2 g/t Ag 4.3 % Zn	308.1 t Ag 728.0 kt Zn	9.9 Moz Ag 1.6 Blbs Zn
Lone Star [24] Orogenic Klondike Gold Corp. 2022-11-10	Lone Star 115O 072 Stander 115O 180	Indicated	21.6 Mt	0.68 g/t Au	14.6 t Au	469.1 Koz Au
		Inferred	6.5 Mt	0.54 g/t Au	3.5 t Au	112.0 Koz Au
Macpass (Macmillan Pass) [13] Clastic-dominated massive sulphide Fireweed Metals Ltd. 2018-01-10	Jason Main 105O 019 Jason South 105O 072 Tom East 105O 070 Tom Southeast 105O 063 Tom West 105O 001	Indicated	11.2 Mt	21.36 g/t Ag 2.48 % Pb 6.59 % Zn	239.5 t Ag 278.2 kt Pb 739.0 kt Zn	7.7 Moz Ag 613.3 Mlbs Pb 1.6 Blbs Zn
		Inferred	39.5 Mt	38.16 g/t Ag 3.14 % Pb 5.84 % Zn	1.5 kt Ag 1.2 Mt Pb 2.3 Mt Zn	48.4 Moz Ag 2.7 Blbs Pb 5.1 Blbs Zn
Mactung [7] Skarn Fireweed Metals Ltd. 2023-07-28	Mactung 105O 002	Indicated	41.5 Mt	0.72 % WO ₃	300.7 kt WO ₃	663.0 Mlbs WO ₃
		Inferred	12.2 Mt	0.59 % WO ₃	72.4 kt WO ₃	159.7 Mlbs WO ₃
Marg [10] Volcanogenic massive sulphide Azarga Metals Corp. 2015-10-06	Marg 106D 009	Indicated	3.7 Mt	0.76 g/t Au 48.0 g/t Ag 1.5 % Cu 2.0 % Pb 3.8 % Zn	2.8 t Au 177.6 t Ag 55.5 kt Cu 74.0 kt Pb 140.6 kt Zn	90.4 Koz Au 5.7 Moz Ag 122.4 Mlbs Cu 163.1 Mlbs Pb 310.0 Mlbs Zn
		Inferred	6.1 Mt	0.74 g/t Au 44.0 g/t Ag 1.2 % Cu 1.7 % Pb 3.4 % Zn	4.5 t Au 268.4 t Ag 73.2 kt Cu 103.7 kt Pb 207.4 kt Zn	145.1 Koz Au 8.6 Moz Ag 161.4 Mlbs Cu 228.6 Mlbs Pb 457.2 Mlbs Zn
Mel [18] Mississippi Valley-type Silver Range Resources Ltd. 2017-03-20	Main Zone 095D 005	Inferred	5.3 Mt	1.86 % Pb 6.51 % Zn	98.2 kt Pb 343.7 kt Zn	216.5 Mlbs Pb 757.8 Mlbs Zn
Minto [3] Porphyry Under Care and Maintenance with Assessment and Abandoned Mines Yukon 2021-05-07	118 Copper Keel/ Ridgetop 115I 168 Minto East 115I 164 Minto North 115I 022 Ridgetop 115I 168	Indicated	11.1 Mt	0.53 g/t Au 4.73 g/t Ag 1.46 % Cu	5.9 t Au 52.4 t Ag 162.1 kt Cu	188.8 Koz Au 1.7 Moz Ag 357.3 Mlbs Cu
		Inferred	13.0 Mt	0.49 g/t Au 4.56 g/t Ag 1.29 % Cu	6.4 t Au 59.3 t Ag 168.2 kt Cu	206.7 Koz Au 1.9 Moz Ag 370.7 Mlbs Cu

Project [map number] Deposit type Owner/optionee Date of reference	Mineralized zone Yukon MINFILE number	Material (if specified) and Category	Tonnes	Grade	Contained metals	
					Metric	Imperial
Compliant resource calculations						
Nickel Shāw [1] Magmatic Sulphide Nickel Creek Platinum Corp. 2023-09-20	Arch 115G 025 Wellgreen 115G 024	Proven	101.0 Mt	0.05 g/t Au 0.16 % Cu 0.26 % Ni 0.01 % Co 0.25 g/t Pt 0.24 g/t Pd	5.0 t Au 161.6 kt Cu 262.6 kt Ni 14.1 kt Co 25.2 t Pt 24.2 t Pd	162.4 Koz Au 356.3 Mlbs Cu 578.9 Mlbs Ni 31.2 Mlbs Co 811.8 Koz Pt 779.3 Koz Pd
		Probable	206.7 Mt	0.03 g/t Au 0.12 % Cu 0.26 % Ni 0.01 % Co 0.21 g/t Pt 0.23 g/t Pd	6.2 t Au 248.0 kt Cu 537.4 kt Ni 28.9 kt Co 43.4 t Pt 47.5 t Pd	199.4 Koz Au 546.8 Mlbs Cu 1.2 Blbs Ni 63.8 Mlbs Co 1.4 Moz Pt 1.5 Moz Pd
		Measured + Indicated	436.7 Mt	0.04 g/t Au 0.14 % Cu 0.26 % Ni 0.01 % Co 0.23 g/t Pt 0.24 g/t Pd	18.7 t Au 592.2 kt Cu 1.1 Mt Ni 61.1 kt Co 98.5 t Pt 103.6 t Pd	600.9 Koz Au 1.3 Blbs Cu 2.5 Blbs Ni 134.8 Mlbs Co 3.2 Moz Pt 3.3 Moz Pd
		Inferred	117.2 Mt	0.04 g/t Au 0.13 % Cu 0.27 % Ni 0.01 % Co 0.2 g/t Pt 0.25 g/t Pd	4.7 t Au 153.7 kt Cu 319.1 kt Ni 17.6 kt Co 23.6 t Pt 29.8 t Pd	150.8 Koz Au 338.8 Mlbs Cu 703.5 Mlbs Ni 38.9 Mlbs Co 759.0 Koz Pt 956.8 Koz Pd
Northern Dancer [9] Porphyry Largo Resources Ltd. 2011-03-28	Logtung 105B 039	Measured + Indicated	223.4 Mt	0.03 % Mo 0.1 % WO ₃	67.0 kt Mo 226.5 kt WO ₃	147.8 Mlbs Mo 499.3 Mlbs WO ₃
		Inferred	201.2 Mt	0.02 % Mo 0.09 % WO ₃	40.2 kt Mo 181.1 kt WO ₃	88.7 Mlbs Mo 399.2 Mlbs WO ₃
Osiris [32] Carlin-type Hecla Mining Co. 2022-05-10	Conrad 105D 097 Ibis 106C 064 Osiris 106C 045 Sunrise 106C 129	Indicated	5.5 Mt	4.12 g/t Au	22.8 t Au	731.9 Koz Au
		Inferred	9.4 Mt	3.47 g/t Au	32.5 t Au	1.0 Moz Au
QV [33] Orogenic White Gold Corp. 2023-05-30	VG 105J 043	Inferred	5.9 Mt	1.51 g/t Au	8.9 t Au	287.1 Koz Au
Rau [31] Carlin-type Hecla Mining Co. 2020-02-27	Tiger 105B 009	Oxide Indicated	2.1 Mt	3.69 g/t Au 0.03 % WO ₃	7.9 t Au 686.4 t WO ₃	254.5 Koz Au 1.5 Mlbs WO ₃
		Inferred	61.0 kt	2.27 g/t Au	138.2 kg Au	4.4 Koz Au
		Sulphide Measured + Indicated	2.4 Mt	2.74 g/t Au 0.02 % WO ₃	6.5 t Au 559.7 t WO ₃	209.8 Koz Au 1.2 Mlbs WO ₃
		Sulphide Inferred	104.0 kt	2.27 g/t Au	236.1 kg Au	7.6 Koz Au
Raven [30] Intrusion-related Victoria Gold Corp. 2022-10-26	Raven 106D 018	Inferred	20.0 Mt	1.67 g/t Au	33.3 t Au	1.1 Moz Au

Project [map number] Deposit type Owner/optionee Date of reference	Mineralized zone Yukon MINFILE number	Material (if specified) and Category	Tonnes	Grade	Contained metals	
					Metric	Imperial
Compliant resource calculations						
Red Mountain [27] Intrusion-related AM Gold Inc. 2012-02-14	Red Mountain 115P 006	Inferred	127.2 Mt	0.48 g/t Au	61.1 t Au	2.0 Moz Au
Risby [8] Skarn 18526 Yukon Inc. 2009-05-29	Risby 105F 034	Inferred	8.5 Mt	0.47 % WO ₃	40.6 kt WO ₃	89.4 Mlbs WO ₃
Selwyn [14] Clastic-dominated massive sulphide Selwyn Chihong Mining Ltd. 2012-05-15	ANNIV Central 105I 037	Indicated	180.7 Mt	1.83 % Pb 5.25 % Zn	3.3 Mt Pb 9.5 Mt Zn	7.3 Blbs Pb 20.9 Blbs Zn
	ANNIV East 105I 074 ANNIV West 105I 075 Brodel 105I 066 Don 105I 073 Don East 105I 068 HC 105I 067 HC West 105I 072 HP 105I 032 OP OP West 105I 076 Pelly North 105I 069 XY Central 105I 012 XY West 105I 071	Inferred	228.8 Mt	1.38 % Pb 4.47 % Zn	3.2 Mt Pb 10.2 Mt Zn	6.9 Blbs Pb 22.6 Blbs Zn



Groundhog property: JW showing with silicified dolomite breccia associated with black shale.

Project [map number] Deposit type Owner/optionee Date of reference	Mineralized zone Yukon MINFILE number	Material (if specified) and Category	Tonnes	Grade	Contained metals	
					Metric	Imperial
Compliant resource calculations						
Silver Hart [22] Manto CMC Metals Ltd. 2021-01-15	KL 105B 168 M 105B 170 S 105B 171 TM 105B 021	Inferred	346.7 kt	333.82 g/t Ag 1.82 % Pb 4.52 % Zn	115.7 t Ag 6.3 kt Pb 15.7 kt Zn	3.7 Moz Ag 13.9 Mlbs Pb 34.6 Mlbs Zn
Silver Range (Keg) [21] Skarn Broden Mining Ltd. 2013-05-27	Keg Main Zone 105K 078	Inferred	39.8 Mt	30.25 g/t Ag 0.15 % Cu 0.26 % Pb 0.77 % Zn 0.03 % Sn	1.2 kt Ag 59.6 kt Cu 103.4 kt Pb 306.2 kt Zn 10.7 kt Sn	38.7 Moz Ag 131.5 Mlbs Cu 227.9 Mlbs Pb 674.9 Mlbs Zn 23.7 Mlbs Sn
Skukum Gold [39] Epithermal Tincorp Metals Inc. 2022-10-28	Goddell Gully 105D 025	Indicated	1.6 Mt	6.79 g/t Au 114.56 g/t Ag	10.8 t Au 182.6 t Ag	347.8 Koz Au 5.9 Moz Ag
	Mount Skukum 105D 158 Skukum Creek 105D 022	Inferred	3.0 Mt	4.64 g/t Au 58.1 g/t Ag	14.0 t Au 175.2 t Ag	449.7 Koz Au 5.6 Moz Ag
Tinta Hill [38] Epithermal Triumph Gold Corp. 2020-02-11	Tinta Hill 115I 058	Inferred	2.2 Mt	1.29 g/t Au 44.75 g/t Ag 0.17 % Cu 0.63 % Pb 1.29 % Zn	2.8 t Au 97.7 t Ag 3.7 kt Cu 13.7 kt Pb 28.2 kt Zn	90.6 Koz Au 3.1 Moz Ag 8.1 Mlbs Cu 30.1 Mlbs Pb 62.2 Mlbs Zn
White Gold [34] Orogenic White Gold Corp. 2023-05-30	Arc 115O 166	Indicated	16.1 Mt	2.22 g/t Au	35.8 t Au	1.2 Moz Au
	Golden Saddle 115O 165 Ryan 115O 012	Inferred	13.2 Mt	1.55 g/t Au	20.4 t Au	654.5 Koz Au
Wolf (Hasselberg) [15] Volcanogenic massive sulphide BMC Minerals Ltd. 2017-01-23	Wolf 105G 034	Inferred	3.0 Mt	42.0 g/t Ag 1.4 % Pb 4.9 % Zn	126.0 t Ag 42.0 kt Pb 147.0 kt Zn	4.1 Moz Ag 92.6 Mlbs Pb 324.1 Mlbs Zn
Wolf (Mar) [6] Skarn Victoria Gold Corp. 2008-12-08	Mar-Tungsten 106D 027	Indicated	12.7 Mt	0.31 % WO ₃	39.4 kt WO ₃	86.8 Mlbs WO ₃
		Inferred	1.3 Mt	1.3 % WO ₃	16.9 kt WO ₃	37.3 Mlbs WO ₃

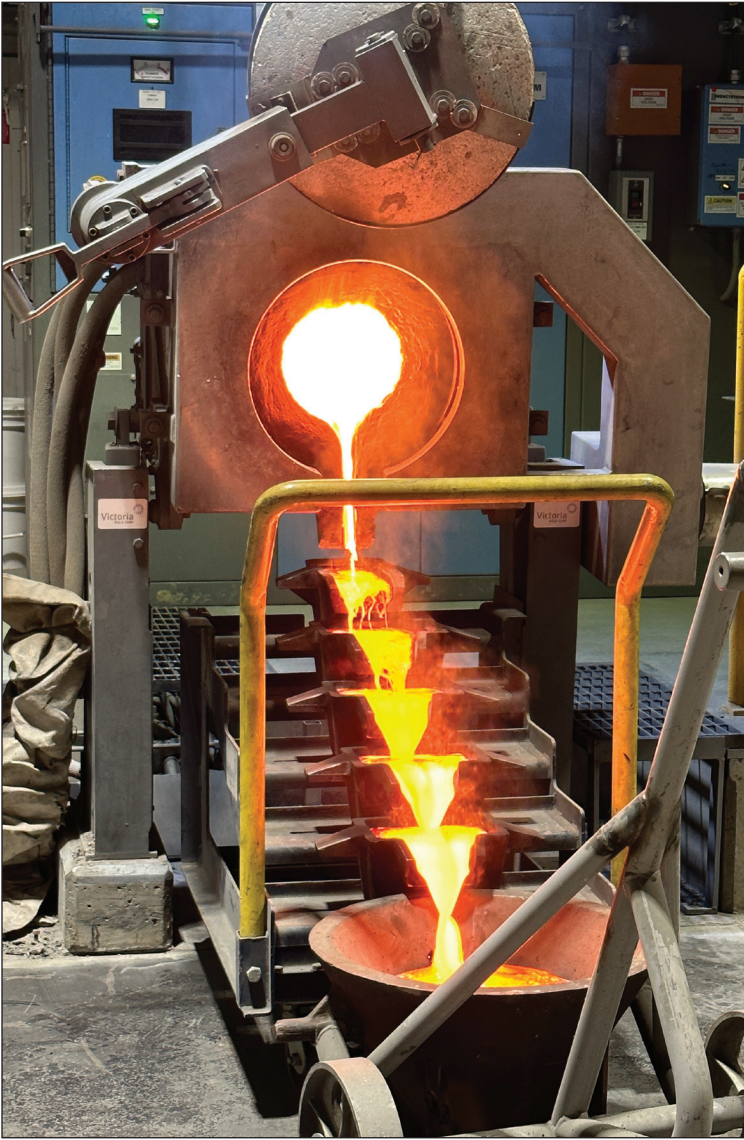


Core cutters at work. Photo courtesy of Yukon Mining Alliance

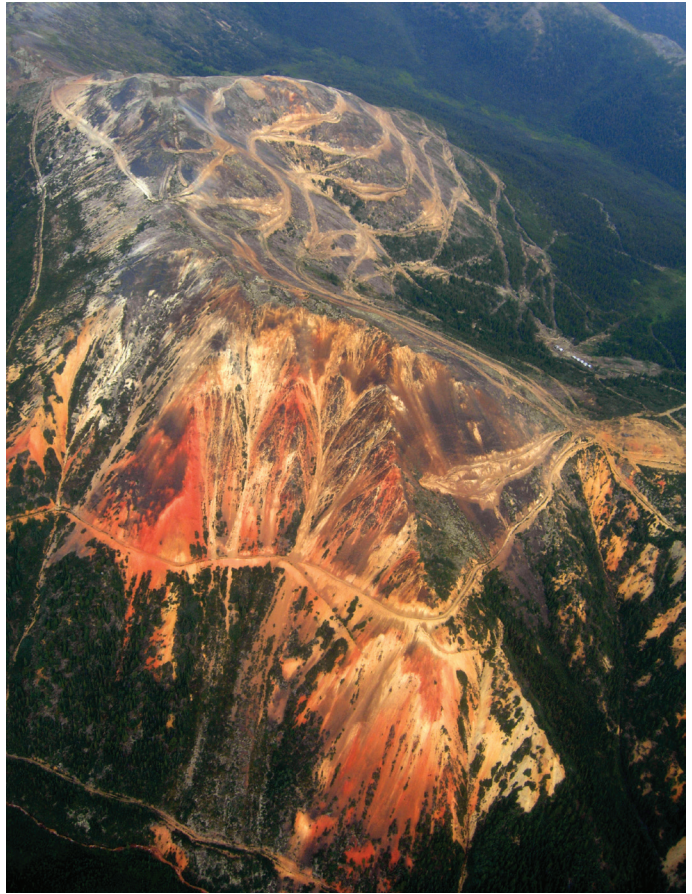
Project [map number] Deposit type Owner/optionee Date of reference	Mineralized zone Yukon MINFILE number	Material (if specified) and Category	Tonnes	Grade	Contained metals	
					Metric	Imperial
Compliant resource calculations						
Wolverine [17] Volcanogenic massive sulphide Under Care and Maintenance with Assessment and Abandoned Mines Yukon 2007-02-28	Wolverine 115I 223	Proven	564.0 kt	1.24 g/t Au 246.9 g/t Ag 0.96 % Cu 1.24 % Pb 10.31 % Zn	699.4 kg Au 139.3 t Ag 5.4 kt Cu 7.0 kt Pb 58.1 kt Zn	22.5 Koz Au 4.5 Moz Ag 11.9 Mlbs Cu 15.4 Mlbs Pb 128.2 Mlbs Zn
		Probable	4.6 Mt	1.37 g/t Au 286.2 g/t Ag 0.91 % Cu 1.26 % Pb 9.59 % Zn	6.3 t Au 1.3 kt Ag 41.8 kt Cu 57.8 kt Pb 440.0 kt Zn	202.1 Koz Au 42.2 Moz Ag 92.0 Mlbs Cu 127.4 Mlbs Pb 970.0 Mlbs Zn
		Measured + Indicated	4.5 Mt	1.7 g/t Au 354.84 g/t Ag 1.16 % Cu 1.57 % Pb 12.14 % Zn	7.6 t Au 1.6 kt Ag 51.8 kt Cu 70.0 kt Pb 541.5 kt Zn	243.2 Koz Au 50.9 Moz Ag 114.3 Mlbs Cu 154.3 Mlbs Pb 1.2 Blbs Zn
		Inferred	1.7 Mt	1.71 g/t Au 385.4 g/t Ag 1.23 % Cu 1.74 % Pb 12.16 % Zn	2.9 t Au 652.5 t Ag 20.8 kt Cu 29.5 kt Pb 205.9 kt Zn	93.1 Koz Au 21.0 Moz Ag 45.9 Mlbs Cu 64.9 Mlbs Pb 453.9 Mlbs Zn
Yukon Base Metal Project [12] Mississippi Valley-type 18526 Yukon Inc. (10%), Renegade Exploration Ltd. (90%) 2020-02-10	Andrew 105K 089 Darcy 105K 004 Darin 105K 033	Measured + Indicated	10.3 Mt	1.02 % Pb 5.4 % Zn	105.1 kt Pb 557.8 kt Zn	231.7 Mlbs Pb 1.2 Blbs Zn
		Inferred	2.2 Mt	0.17 % Pb 4.68 % Zn	3.8 kt Pb 103.9 kt Zn	8.3 Mlbs Pb 229.0 Mlbs Zn



Casino copper-gold-molybdenum-silver porphyry property in the Dawson Range.



Molten gold being poured at Victoria Gold's facilities, mined from the Dublin Gulch deposit.



Natural, bright red weathering of the hornfelsed metasedimentary rocks surrounding the Red Mountain molybdenum porphyry deposit, southern Yukon.



Nickel Shāw property, nickel-platinum group elements: a drill site during the 2022 summer season.

Projects with a historical mineral deposit calculation

Yukon Terranes

Outboard

- YA Yakutat
- CG Chugach

Insular

- KS Kluane, Windy
- PE Peninsular
- WR Wrangellia
- AX Alexander
- BC Bear Creek

Infrastructure

- ★ Capital city
- Community
- Primary highway
- Secondary highway
- Power line

Arctic

- AAns Arctic Alaska (N Slope)

Intermontane

- CC Cache Creek
- AT Atlin
- ST Stikinia
- QN Quesnellia
- YT Yukon-Tanana
- SM Slide Mountain

Critical minerals

- Ni ± (Cu, PGE)
- 42 Canalask
- Cu ± (Au, Mo)
- 43 Hart River
- 44 Cash
- 45 Ice
- 46 Whitehorse Copper
- Mo
- 47 Red Mountain Moly
- W
- 48 Stormy
- 49 Bailey
- Pb-Zn ± (Ag, Cu)
- 50 Faro
- 51 Matt Berry
- 52 Sa Dena Hes
- 53 McMillan
- Zn
- 54 Goz Creek
- Sb
- 55 Becker-Cochran
- Sn
- 56 JC

Ancestral North America

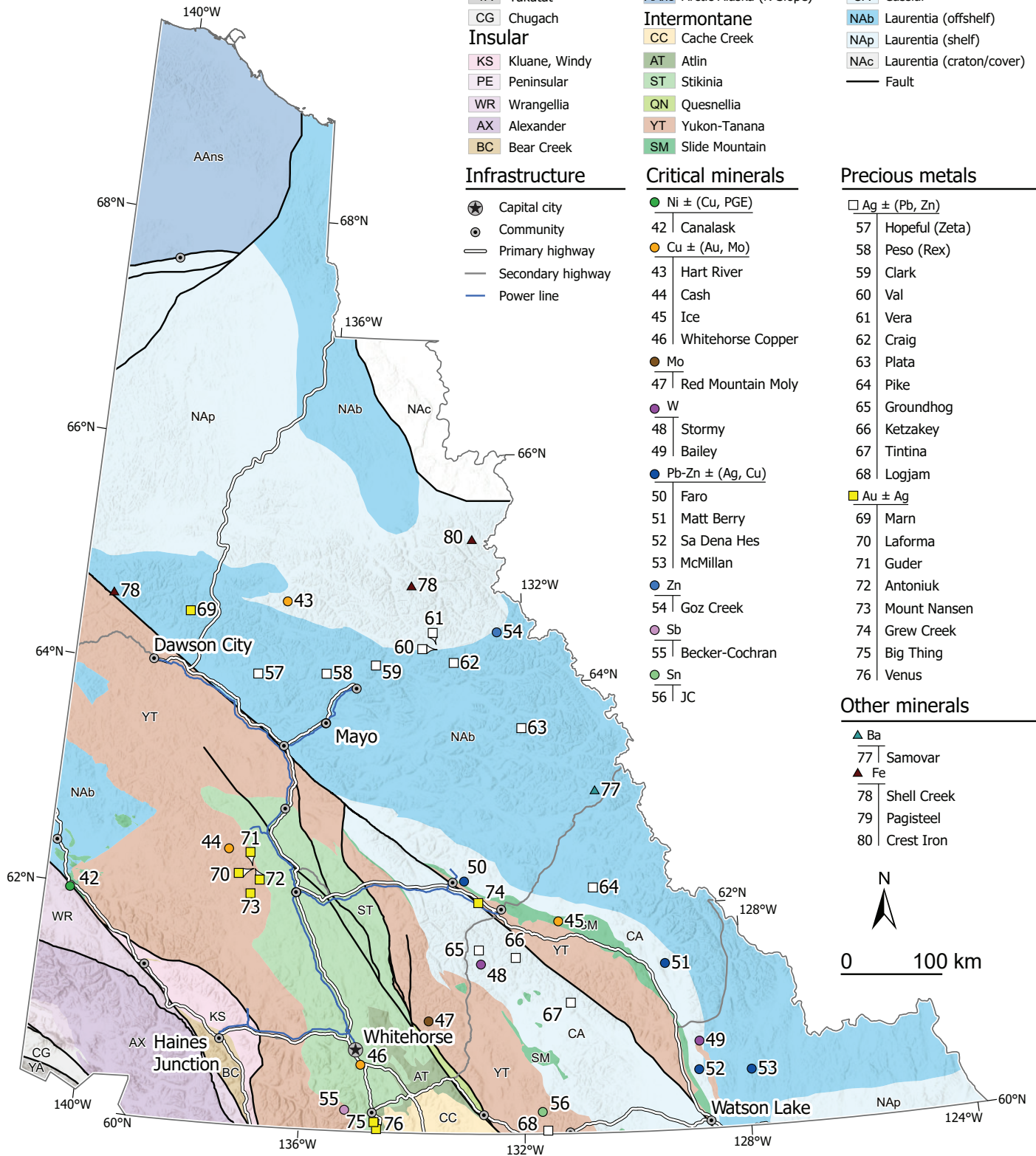
- CA Cassiar
- NAb Laurentia (offshelf)
- NAp Laurentia (shelf)
- NAC Laurentia (craton/cover)
- Fault

Precious metals

- Ag ± (Pb, Zn)
- 57 Hopeful (Zeta)
- 58 Peso (Rex)
- 59 Clark
- 60 Val
- 61 Vera
- 62 Craig
- 63 Plata
- 64 Pike
- 65 Groundhog
- 66 Ketzakey
- 67 Tintina
- 68 Logjam
- Au ± Ag
- 69 Marn
- 70 Laforma
- 71 Guder
- 72 Antoniuk
- 73 Mount Nansen
- 74 Grew Creek
- 75 Big Thing
- 76 Venus

Other minerals

- ▲ Ba
- 77 Samovar
- ▲ Fe
- 78 Shell Creek
- 79 Pagisteel
- 80 Crest Iron



Project [map number] Deposit type Owner/optionee Date of reference	Mineralized zone Yukon MINFILE number	Material (if specified) and Category	Tonnes	Grade	Contained metals	
					Metric	Imperial
Historic resources						
Antoniuk [72] Porphyry 0878950 B.C. Ltd. 1988-03-28	Antoniuk 115I 111	Oxide Indicated	2.6 Mt	0.99 g/t Au	2.6 t Au	83.5 Koz Au
		Sulphide Indicated	1.1 Mt	1.5 g/t Au	1.6 t Au	51.5 Koz Au
Bailey [49] Skarn North American Tungsten Corporation Ltd. 1988-03-30	B Showing 105A 017		399.0 kt	1.0 % WO ₃	4.0 kt WO ₃	8.8 Mlbs WO ₃
Becker-Cochran [55] Epithermal Tincorp Metals Inc. 1986-05-07	Becker-Cochran 105D 027		127.0 kt	4.0 % Sb	5.1 kt Sb	11.2 Mlbs Sb
Big Thing [75] Epithermal Crown Grant, withdrawn from staking 1988-01-01	Big Thing 105D 009	Oxide	74.8 kt	13.4 g/t Au 349.7 g/t Ag	1.0 t Au 26.1 t Ag	32.2 Koz Au 840.5 Koz Ag
Canalask [42] Magmatic sulphide Palladium One Mining Inc. 1968-11-08	Canalask 115F 045		390.2 kt	1.35 % Ni	5.3 kt Ni	11.6 Mlbs Ni
Cash [44] Porphyry no claims; Category A Selkirk First Nation settlement lands 1975-08-01	Cash 115I 037		36.3 Mt	0.18 % Cu 0.01 % Mo	67.2 kt Cu 4.0 kt Mo	148.1 Mlbs Cu 8.8 Mlbs Mo
Clark [59] Manto Ivan Elash 1988-03-17	Clark 106D 011		327.4 kt	232.5 g/t Ag 5.64 % Pb 4.6 % Zn	76.1 t Ag 18.5 kt Pb 15.1 kt Zn	2.4 Moz Ag 40.7 Mlbs Pb 33.2 Mlbs Zn
Craig [62] Mississippi Valley-type Strategic Metals Ltd. 2002-01-01	Craig 106C 073		875.0 kt	123.4 g/t Ag 13.5 % Pb 8.5 % Zn	108.0 t Ag 118.1 kt Pb 74.4 kt Zn	3.5 Moz Ag 260.4 Mlbs Pb 164.0 Mlbs Zn
Crest Iron [80] Iron formation Chevron Canada Ltd. 2006-07-17	Iron Creek 105C 021		11 196 Mt	43.82 % Fe	4906 Mt Fe	10 816 Blbs Fe
Faro [50] Clastic-dominated massive sulphide Under Care and Maintenance with Government of Canada 1996-11-01 ¹ 1983-01-01 ²	Dy-Grizzly ¹ 105K 101 Faro ² 105K 061 Grum ² 105K 056 Swim ² 105K 046 Vangorda ² 105K 055		62.7 Mt	0.21 g/t Au	13.0 t Au	417.5 Koz Au
				53.94 g/t Ag	3.4 kt Ag	108.8 Moz Ag
				3.66 % Pb	2.3 Mt Pb	5.1 Blbs Pb
				5.21 % Zn	3.3 Mt Zn	7.2 Blbs Zn
Goz Creek [54] Mississippi Valley-type Silver North Resources Ltd. 2009-04-01	Main Zone 106C 020		2.6 Mt	11.25 % Zn	295.3 kt Zn	650.9 Mlbs Zn
Grew Creek [74] Epithermal Sabre Gold Mines Corp. 1998-03-17	Grew Creek 105K 009		527.4 kt	5.27 g/t Au	2.8 t Au	89.4 Koz Au

Project [map number] Deposit type Owner/optionee Date of reference	Mineralized zone Yukon MINFILE number	Material (if specified) and Category	Tonnes	Grade	Contained metals	
					Metric	Imperial
Historic resources						
Groundhog [65] Manto Honey Badger Silver Inc. 1988-11-30	Lucky / MF 105F 168 No. 2 / No. 2-A 105F 171 No. 3 105F 170 PN 105F 169 Zeus 105F 172	Probable	34.6 kt	0.28 g/t Au 164.38 g/t Ag 5.79 % Pb 3.38 % Zn	9.5 kg Au 5.7 t Ag 2.0 kt Pb 1.2 kt Zn	306.0 oz Au 183.1 Koz Ag 4.4 Mlbs Pb 2.6 Mlbs Zn
		Possible	10.2 kt	0.26 g/t Au 75.92 g/t Ag 3.49 % Pb 3.06 % Zn	2.6 kg Au 776.5 kg Ag 357.3 t Pb 312.8 t Zn	84.0 oz Au 25.0 Koz Ag 787.6 Klbs Pb 689.6 Klbs Zn
		Indicated	186.9 kt	0.18 g/t Au 68.73 g/t Ag 2.7 % Pb 4.13 % Zn	34.4 kg Au 12.8 t Ag 5.0 kt Pb 7.7 kt Zn	1.1 Koz Au 412.9 Koz Ag 11.1 Mlbs Pb 17.0 Mlbs Zn
Guder [71] Skarn Triumph Gold Corp. 1989-04-07	Margarete Vein 115I 053		123.8 kt	4.21 g/t Au 47.2 g/t Ag	521.1 kg Au 5.8 t Ag	16.8 Koz Au 187.8 Koz Ag
Hart River [43] Volcanogenic massive sulphide Michael Power 1997-01-01	Mark 116A 009		523.8 kt	1.41 g/t Au 49.7 g/t Ag 1.45 % Cu 0.87 % Pb 3.65 % Zn	738.6 kg Au 26.0 t Ag 7.6 kt Cu 4.6 kt Pb 19.1 kt Zn	23.7 Koz Au 837.1 Koz Ag 16.7 Mlbs Cu 10.0 Mlbs Pb 42.2 Mlbs Zn
Hopeful (Zeta) [57] Greisen 18526 Yukon Inc. 1989-01-01	Zeta 115P 047		98.2 kt	557.8 g/t Ag	54.8 t Ag	1.8 Moz Ag
Ice [45] Volcanogenic massive sulphide Yukon Zinc Corp. 2003-06-02	Ice 105G 118	Indicated	4.6 Mt	1.48 % Cu	67.5 kt Cu	148.8 Mlbs Cu
JC [56] Skarn Mark Fekete 1981-01-01	JC 105B 040	Measured	1.1 Mt	0.54 % Sn	6.1 kt Sn	13.5 Mlbs Sn
Ketzakey [66] Manto Government of Yukon 1986-01-01	18B 105F 057		10.7 kt	545.1 g/t Ag 12.15 % Pb	5.8 t Ag 1.3 kt Pb	187.6 Koz Ag 2.9 Mlbs Pb
Laforma [70] Epithermal 0878950 B.C. Ltd. 2020-02-11	G-3 Vein 115I 054		340.8 kt	7.43 g/t Au	2.5 t Au	81.4 Koz Au
Logjam [68] Manto CMC Metals Ltd. 1983-07-20	10 Veins 105B 038		70.1 kt	3.02 g/t Au 393.2 g/t Ag	211.8 kg Au 27.6 t Ag	6.8 Koz Au 886.7 Koz Ag
Marn [69] Skarn Joel Robert White 1986-03-30	Marn 116B 147		250.0 kt	7.8 g/t Au 15.6 g/t Ag 1.0 % Cu 0.1 % WO ₃	2.0 t Au 3.9 t Ag 2.5 kt Cu 250.0 t WO ₃	62.7 Koz Au 125.4 Koz Ag 5.5 Mlbs Cu 551.2 Klbs WO ₃
Matt Berry [51] Volcanogenic massive sulphide Nicolai Goeppel 1983-03-18	Matt Berry 105H 021		533.6 kt	94.4 g/t Ag 6.12 % Pb 4.64 % Zn	50.4 t Ag 32.7 kt Pb 24.8 kt Zn	1.6 Moz Ag 72.0 Mlbs Pb 54.6 Mlbs Zn

Project [map number] Deposit type Owner/optionee Date of reference	Mineralized zone Yukon MINFILE number	Material (if specified) and Category	Tonnes	Grade	Contained metals	
					Metric	Imperial
Historic resources						
McMillan [53] Manto Liard River Mining Co Ltd. 1991-01-16	Main Zone 095D 006 South Zone 095D 042		1.5 Mt	83.98 g/t Ag 5.41 % Pb 6.32 % Zn	126.0 t Ag 81.2 kt Pb 94.8 kt Zn	4.1 Moz Ag 179.0 Mlbs Pb 209.0 Mlbs Zn
Mount Nansen [73] Epithermal Mount Nansen Remediation Ltd. 2009-11-27	Brown-McDade 115I 064 Flex 115I 137 Huestis 115I 138 Webber 115I 065	Indicated	280.6 kt	9.38 g/t Au 236.02 g/t Ag	2.6 t Au 66.2 t Ag	84.6 Koz Au 2.1 Moz Ag
		Inferred	204.9 kt	9.11 g/t Au 250.77 g/t Ag	1.9 t Au 51.4 t Ag	60.0 Koz Au 1.7 Moz Ag
Pagisteel [79] Iron formation Withdrawn from staking. OIC 2020/54 1990-04-12	Pagisteel 106D 049		1.0 Mt	29.2 % Fe	292.0 kt Fe	643.7 Mlbs Fe
Peso (Rex) [58] Epithermal Victoria Gold Corp. 1965-11-10	Peso & Rex Veins 106D 021		139.4 kt	653.1 g/t Ag 3.7 % Pb	91.0 t Ag 5.2 kt Pb	2.9 Moz Ag 11.4 Mlbs Pb
Pike [64] Vein Withdrawn from staking. OIC 2015/21 1981-08-31	Zone 1 105J 003		350.0 kt	69.17 g/t Ag 0.61 % Cu	24.2 t Ag 2.1 kt Cu	778.4 Koz Ag 4.7 Mlbs Cu
Plata [63] Manto Honey Badger Silver Inc. 2008-01-30	P4 Vein 105N 003	Inferred	312.0 kt	3.81 g/t Au 390.8 g/t Ag 5.0 % Pb 5.0 % Zn	1.2 t Au 121.9 t Ag 15.6 kt Pb 15.6 kt Zn	38.2 Koz Au 3.9 Moz Ag 34.4 Mlbs Pb 34.4 Mlbs Zn
Red Mountain Moly [47] Porphyry Tintina Mines Ltd. 1995-11-09	Red Mountain 105C 009		187.0 Mt	0.17 % Mo	312.3 kt Mo	688.5 Mlbs Mo
Sa Dena Hes [52] Skarn JDS Silver Inc. 2004-02-20	Main Zone 105A 013	Indicated	2.2 Mt	2.6 % Pb 10.4 % Zn	56.9 kt Pb 227.8 kt Zn	125.5 Mlbs Pb 502.1 Mlbs Zn
Samovar [77] Clastic-dominated massive barite Coyne, H. & Sons Ltd 1986-08-01	Tea 105O 020		225.0 kt	90.0 % BaSO ₄	202.5 kt BaSO ₄	446.4 Mlbs BaSO ₄
Shell Creek [78] Iron formation K2 Resources Inc. 1969-09-23	Shell Creek 116C 029		453.5 t	25.0 % Fe	113.4 t Fe	249.9 Klbs Fe
Stormy [48] Skarn E-Energy Ventures Inc. 1959-11-10	Stormy 105F 011		15.3 kt	0.73 % Mo 1.05 % WO ₃	111.5 t Mo 160.3 t WO ₃	245.7 Klbs Mo 353.4 Klbs WO ₃
Tintina [67] Manto Tintina Mines Ltd. 1981-01-01	Tintina 105G 006		90.8 kt	0.58 g/t Ag 6.0 % Pb 10.0 % Zn	52.7 kg Ag 5.4 kt Pb 9.1 kt Zn	1.7 Koz Ag 12.0 Mlbs Pb 20.0 Mlbs Zn
Val [60] Mississippi Valley-type Hecla Mining Co. 1982-02-23	Siltstone Vein 106C 135	Indicated	20.0 kt	1027.4 g/t Ag 26.7 % Pb 7.3 % Zn	20.5 t Ag 5.3 kt Pb 1.5 kt Zn	660.6 Koz Ag 11.8 Mlbs Pb 3.2 Mlbs Zn

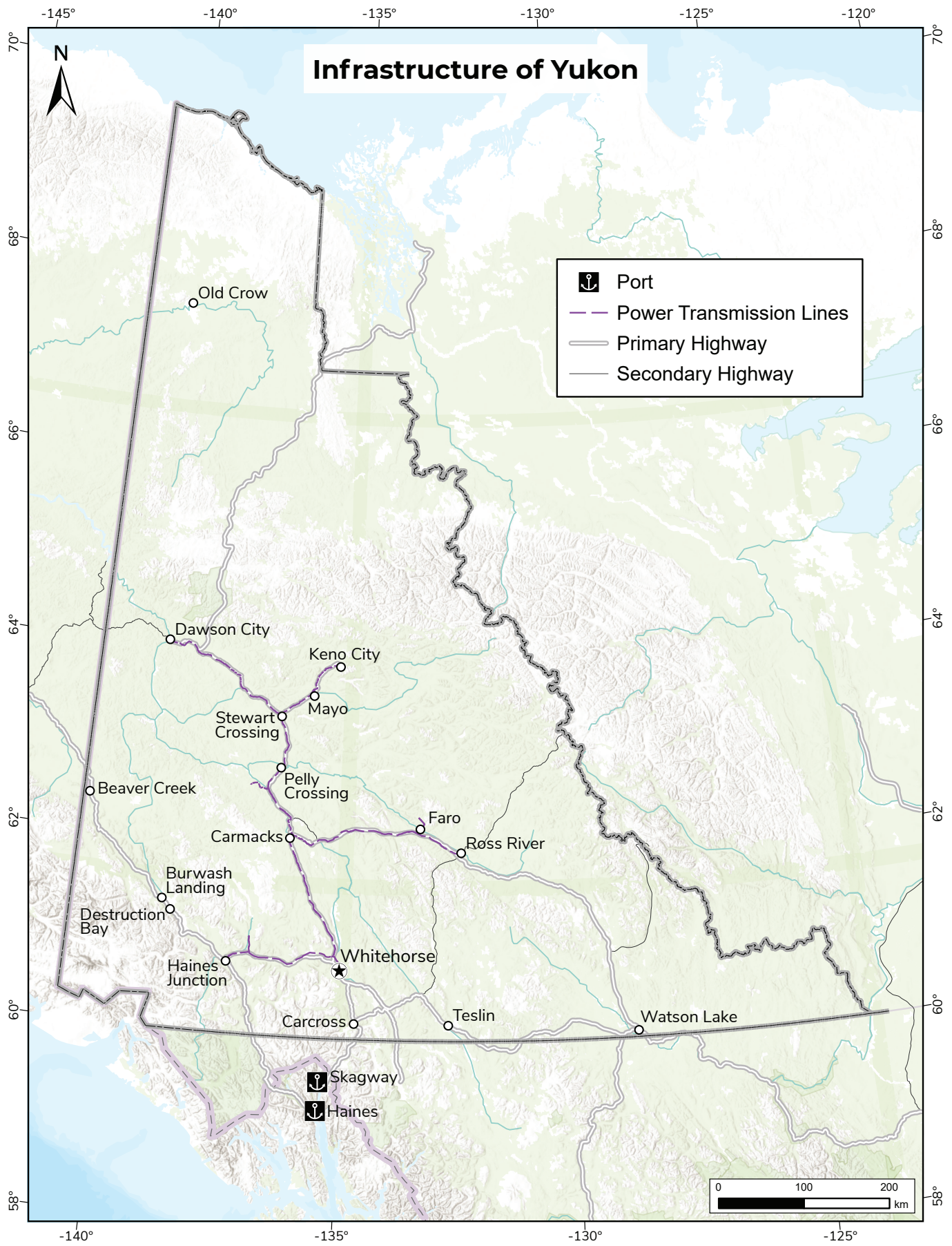
Project [map number] Deposit type Owner/optionee Date of reference	Mineralized zone Yukon MINFILE number	Material (if specified) and Category	Tonnes	Grade	Contained metals	
					Metric	Imperial
Historic resources						
Venus [76] Vein 18526 Yukon Inc. 1987-01-01	Venus 105D 005		63.5 kt	10.65 g/t Au 238.5 g/t Ag 1.3 % Pb 0.7 % Zn	676.3 kg Au 15.1 t Ag 825.5 t Pb 444.5 t Zn	21.7 Koz Au 486.9 Koz Ag 1.8 Mlbs Pb 980.0 Klbs Zn
Vera [61] Manto Ryan, Shawn 1985-02-05	Main 106C 083		356.2 kt	607.0 g/t Ag 3.18 % Pb 3.47 % Zn	216.2 t Ag 11.3 kt Pb 12.4 kt Zn	7.0 Moz Ag 25.0 Mlbs Pb 27.3 Mlbs Zn
Whitehorse Copper [46] Skarn Gladiator Metals Corp. 1984-01-01	Best Chance 105D 211 Black Cub North 105D 217 Black Cub South 105D 218 Cowley Park 105D 230 GEM 105B 032 Keewenaw 105D 233 Kodiak Cub 105D 215		3.1 Mt	0.07 g/t Au 1.17 g/t Ag 0.95 % Cu 0.02 % Mo	203.8 kg Au 3.6 t Ag 29.0 kt Cu 620.8 t Mo	6.6 Koz Au 115.1 Koz Ag 64.0 Mlbs Cu 1.4 Mlbs Mo



The historic mill and ore loading facilities of the Venus mine on the Windy Arm of Tagish Lake.



Massive pentlandite in drill core from the Nickel Shāw property, southwest Yukon.



Index to project pages

Antoniuk	13	Mactung	6
AurMac	3	Marg	6
Bailey	13	Marn	14
Becker-Cochran	13	Matt Berry	14
Big Thing	13	McMillan	15
Blende	3	Mel	6
Brewery Creek	3	Minto	6
Canalask	13	Mount Nansen	15
Carmacks Copper	4	Nickel Shaw	7
Cash	13	Northern Dancer (Logtung)	7
Casino	4	Osiris	7
Clark	13	Pagisteel	15
Clear Creek	4	Peso (Rex)	15
Clear Lake	4	Pike	15
Coffee	4	Plata	15
Craig	13	QV	7
Crest Iron	13	Rau (Tiger)	7
Dublin Gulch (Eagle, Olive)	4	Raven	7
Faro	13	Red Mountain	8
Freegold Mountain	5	Red Mountain Moly	15
Fyre Lake (Kona)	5	Risby	8
Goz Creek	13	Sa Dena Hes	15
Grew Creek	13	Samovar	15
Groundhog	14	Selwyn	8
Guder (Margarete)	14	Shell Creek	15
Hart River (Mark)	14	Silver Hart	9
Hyland Gold	5	Siver Range (Keg)	9
Hopeful (Zeta)	14	Skukum Gold	9
Ice	14	Stormy	15
JC	14	Tinta Hill	9
Keno Hill Silver District	5	Tintina	15
Ketza	5	Val	15
Ketzakey	14	Venus	16
Klaza	5	Vera	16
Kudz Ze Kayah (ABM, Krakatoa)	6	White Gold	9
Laforma	14	Wolf (Hasselberg)	9
Logan	6	Wolf (Mar)	10
Logjam	14	Whitehorse Copper	16
Lone Star	6	Wolverine	10
Macpass (Macmillan Pass)	6	Yukon Base Metal Project	10

Yukon Geological Survey
Department of Energy, Mines and Resources
Government of Yukon