

DAILY DIARY

Tom Morgan

Reid Haines

YMIP

92-064

92-032

deluxe



- 90 - Rented trailer in Dawson.  
Hooked up to pick-up and went  
to Mayo for Nodwell

✓

April 6<sup>th</sup>/92

- 91 - Loaded Nodwell on trailer  
then headed back to Dawson.  
Slow trip - Nodwell is a heavy  
pull.

✓

✓

April 7/92

- 1 - Gathered supplies and headed  
into Montana Crk with the  
Nodwell - Very tough going - trailer  
a foot wider than truck - pulls heavy  
had to unload Nodwell twice to  
make the hills. Finally got the  
Nodwell to the top of Steele Crk.  
Snow is still 5' high on top. Nodwell  
wouldn't go anywhere in the deep  
snow. Back to town due to the  
lateness of the hour.

- April 8/92 - Back to Montana Crk (4 hrs)  
 Got to the top of Steele - parked  
 the truck and unloaded ski-doo  
 2 ✓ Tom and I broke trail down  
 with the ski-doo - Got to Main  
 Camp (on Bismark crk) A bear had  
 totally destroyed everything inside.  
 Cleaned up and unpacked.
- Apr. 9<sup>th</sup> - Got up and went and tarped in  
 Cat, to warm up so we could open  
 3 ✓ road. Finally got Cat going. Walked  
 in to top of Steele Crk - parked  
 ski-doo - Pushed snow off road with  
 Cat - Tom followed in pick-up.
- Apr 10<sup>th</sup> Took truck to the Top of Steele  
 Crk - Started Nodwell and drove  
 4 ✓ down, with Tom following in  
 pick-up - Got to camp #1 with  
 Nodwell - Started loading up  
 with supplies for Left Fork.

- Apr. 11<sup>th</sup> - Headed up Left Fork with Nodwell,  
pitched camp in same location  
5 ✓ - as last year - Unloaded main  
supplies from Nodwell
- Apr. 12<sup>th</sup> - Got up in the morning and went  
for a walk about - checked out  
some of the old holes - most  
6 ✓ - shutted in or full of water. Lots  
of snow in the hills but mostly  
gone in the low valley's.
- Apr. 13<sup>th</sup> - Dug around in an old cat push  
big broken up bedrock mixed in  
with mud - panned out a few  
7 ✓ colors and one Klinker. Old cat  
pushings all around the one area  
Found some old drill holes - post's  
sticking up out of the holes.
- Apr. 14<sup>th</sup> - Decided to put shaft down beside  
one of the drill holes - Drove as  
8 ✓ close as we could with Nodwell  
then unloaded steamer - Packed.

- everything over to shaft site #1
- Started building pad for steamer -
- Dug out all the moss & roots - laid gravel down for fire bed - gathered wood and laid down for steamer
- Set up steamer and hose -
- Dug out moss and vegetation (squared in shaft) and mud down till frozen

Apr. 15 - Filled Steamer with water, laid down on logs in firebed - started fire - connected hose to steamer

9 ✓ Steamed down first steam round

Slow steaming - lots of vegetation mixed with the mud - Tom steamed

Reid tended fire.

Apr. 16/ Mucked out steamed hole down till frozen - 4' started hitting gravel - sides of hole didn't thaw very good no room to work

✓

10 Set up steamer to steam a few holes for blasting

- Apr 17 - - Got steamer going - steamed  
5 holes down to open up shaft  
✓ - Tom set charges and blasted  
11 let clear all times then  
mucked out.
- Apr 18 - Got Steamer set up again  
started steaming down in the  
✓ Gravel - steam points don't seem  
12 to want to go down - finally got  
points down and let them steam.
- April 19 - Started mucking out hole - lots  
of course angular sands and  
rocks with rounds intermixed  
very hard digging, compacted gravels  
✓ As we got closer to the bottom  
13 large chunks of angular bedrock  
put together like a jigsaw puzzle,  
takes lots to pry them out. Right  
at that point water started  
coming in along the bedrock. Panned  
a few colors all through the shaft.

April 20 - Watered out of shaft - supplies getting low. Tom and I decided to go to town for supplies and to see if we couldn't get drill reports on Left Fork.

14 J

Cleaned up around site - Took Nodwell back to truck then Steele Crk to Dawson.

Apr. 21  
Tues

-Went to Archives in Dawson to check who had the ground and who drilled it in the old days. Treadwell put a hydraulic application in 1902 so the Govn. put a freeze on staking in 1903

J

Base line was also completed 1903

15

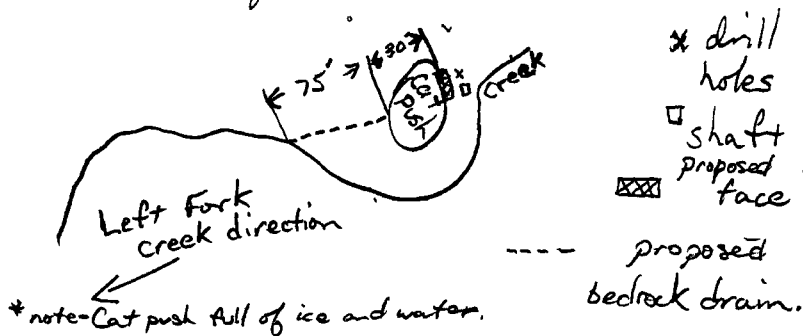
A few old times remained. YCBC Staked and drilled later on. The records for this area are classed as missing. Went to Mining Recorders and check the drill reports from 19 no results on gold found but all the depths were there: Depths confirmed

by shafting in the last 2 years by Tom and I

- Apr. 22 - - Gathered supplies together - Groceries, propane, water, etc, and headed back to Prospect. Loaded Nodwell at Steele Crk. Due to lateness, we decided to spend the night at Bismark Camp.
- Apr. 23 - Took Nodwell up to Left Fork with supplies. Broke a track trying to cross crk at start of Valley. Tom and I walked back to Bismark camp and got some spare belting, then got the broken cleats welded. Again stayed at Bismark Camp.
- Apr 24 - Jumped on 4x4 Honda A.T.V and headed back up to Left Fork to fix Nodwell track. Using come-alongs and chain bumpers we managed to replace a piece of rubber and the broken cleats. Got

- Nodwell into Left Fork camp that night.

April 25 - Tom and I went back to the shaft and looked at the feasibility of putting a bedrock drain into the one cat push from the creek level, and trying to get down lower to bedrock by the time we open up a face on the upstream side.



We decided to go for it.

Started moving steamer from shaft to middle of bedrock drain.

After steamer all moved we started hacking out the willows at the beginning of the drain.

- Apr 26 - Finished removing willows and  
moss at entrance to drain.  
Tom worked downstream removing  
✓ big rocks and willows. I worked  
20 on the outline of the drain.  
Removing moss and vegetation on  
the surface. Tom came and helped  
me when he was done. Finished  
about half way to cat push.
- Apr 27/92 - Started setting up steamer  
gathered wood, dug fire pit  
laid down green logs for steamer  
✓ to lay on. Filled steamer with  
21 water and got hoses together  
with steam points.
- Apr 28 - Started fire around steamer. Tom  
handled points while I gathered  
✓ wood, and tended fire. First steam  
22 round was only a couple of feet. Next  
steam was about  $2\frac{1}{2}$  feet. When steamer  
was empty, Tom and I worked  
out the first part of the drain

- all material was well washed angular sands with round creek rocks, the odd angular flat rock and a little black sand - everything was fairly coarse.

April 29/42 - Got steamer going, mud for about  $1\frac{1}{2}$  feet then into gravels, got steamer down all the way. Mucked out, things starting to get heavily concentrated. Lots of black sands, garnets, etc. The odd color showing up in the pan.

23 Decided to go get the test box from main camp. Tom and I jumped in the Nodwell and headed back to Bismark camp.

Apr 30/42 - Loaded test box, 3" pump, pails and hose into the Nodwell. Headed back up to Left Fork. No problems, unloaded test box as close to drain as we could.

24 Water starting to get high at the creek. Got wet up to

the knee's packing test box across creek.

May 1/1992 - Filled steamer up with water. Tom gathering wood, I started fire and then pounded steam points, hard ground, points go thro top layer of mud quickly  
 ↓ then slow going into the gravels.  
 25 Got points down all the way then let them steam. Mucked out all the mud, then mucked out the gravel and left it beside test box. (approx. 25 buckets)

May 2/92 - Set up test box and pump then hand feed the gravels through. For the  $\frac{1}{2}$  yard of gravel we put through there were only a few colors in the box. Left it together, will continue sluicing as we pull more gravel.  
 ↓  
 26

May 3/92 - Set up steamer. Tom tending  
 steam points, I gathered wood  
 and kept fire going. Mucked  
 out and put the gravel by  
 the test box. (28 rails)

27

May 4/92 - Took Nodwell back down  
 to Steel Ck where the trucks  
 was parked. Back to Town  
 for supplies.

28

May 7 - Headed back out to Montana  
 Ck. Fuel and supplies loaded  
 onto Nodwell. Got Nodwell  
 up to L. Fork.

29

May 8 - Tom and I decided to  
 narrow drain down unless we  
 started getting more colors in  
 the test box. Also it would hurry  
 the drain along.

30

Got steamer going. Steamed  
 down one set and then  
 let them cook

- May 9 - Steamed down another set and let them cook till steamer ran dry. Mucked out all the mud off the top, then mucked out gravel and piled by test box. Drain only 2" wide now, but going alot quicker.
- 31
- 10 - Got steamer set up again. Tom on wood detail I watched steam points. Steamed down one set let cook then steamed down the second set. Mucked out, putting the gravels by the test box. Will have to steam down abit more to get low enough for the drain.
- 32
- 11 - Got steamer going. Steamed bottom of drain down to level. Decided to steam straight in from drain. let cook for awhile at 1' intervals then went up top and steamed down. Got one steam done and started the second one, but ran
- 33

out of steam. Mucked out everything. It worked not bad steaming along the bottom. Mud layer getting thicker. Getting what looks like a basalt boulder coming up with the gravels.

May 12 - Decided to sluice pile of gravel by test box. Approximately 2 yards sluiced. Concentrate is full of black sands, garnets, quite a few basalt pebbles showing up. Lots of angular mixed in with the rounds. After sluicing we decided to clean up. Didn't turn out as nice as we would have liked [does it ever] Weighed out to about  $\frac{1}{5}$  of a gram. Works out to about \$1.00 per yard. It's sort of discouraging but we're not on bedrock yet so we'll keep going.

✓  
34

Loaded steamer onto Nedwell to take down and finish some more assessment work on Montana.

## Assesment work

- Town for supplies

x1

17 - Tom staying in town for awhile, I headed back out to Montana Crk with supplies and extra gas for Nodwell and 4x4 A.T.V. Loaded up Nodwell with supplies headed over to main Bismark camp to load steamer and tools etc. for more work up Left Fork. Spent the night will head up in the morning

May 18 - While heading up to Left Fork today, one of the wheels on the Nodwell fell off. It was the bearings. They were totally ruined and full of mud. I had been greasing, but it looked like the grease had been going right thru.

one side of the muel. All the seals were totally gone.

Unloaded the steamer and hoses, etc. Jacked up Nodwell and got the axle chained up so I could baby it back to Main Camp. Once back to camp I check out all the seals and bearings. Three others were also ruined.

Telephone a friend in Whse to get 4 bearings with Inner and outer seals and to send them to Tom to bring in when he came.

May 19/42 - Blocked up the Nodwell loosened tracks and took off the 4 worst bearings  
✓ Cleaned things up so that when  
37 the parts get here, we can just put things together.

May 20 - Loaded 4x4 and headed up to Kitchener pass on left limit Bismark today.

Fairly wide open valley that's very deep cut with what looks to be a fairly low saddle between the top of Kitchener and the top of Stowe.

✓

38

Found conglomerates in a few places, fairly large boulders.

Dug down in a few spots by the creek, panned out a couple of colors, fair amount of fine blk sands and a few garnets. Pitched a lean-to at forks of Kitchener.

x2

May 21 - Walked up to the top of Kitchener, definite low saddle across to Stowe crk. Headed back down to Bismark.

✓

39

Tom in afternoon, with parts for the Nodwell. We got all the parts back on, filled every thing with grease. Had to make.

a bunch of dust caps for the seals out of hose and hose clamps.

May 22 - Got tracks all adjusted and Nodwell ready to go. Loaded supplies and headed back up to Left Fork. Stopped to pick up steamer etc. that I had to drop off before. At Left Fork camp, Tom cooked dinner while I unloaded Nodwell

✓  
40

May 23 - Back to drain. Cut wood and set up steamer. While steamer was heating up we mucked out what than we could

✓  
41

Steamed down 2 steams, Tom watching points while I cut wood and tended fire. Mucked out all the mud first then mucked out all the gravels and put by test box.

- May 24 Set up steamer. I helped Tom cut wood then I jumped on 4x4 and headed out to Truck. I had to go to town. Tom stayed to work on drain
- 42 ✓ steaming, then mucking out
- 25 - Tom set up steamer, steamed down then mucked out.
- 43 ✓
- 26 - Last day steaming. Tom did the last of the steaming then mucked out. Got the water flowing out of the cat push. Worked on lowering the drain as the water flowed out. Nodwell back down to Steele Ck. Truck back to town.
- 44 ✓
- 27 - We both headed back into Montana Ck. Tom drove Nodwell I drove 4x4 back up to Left Fork. Moved steamer over to where we are going to put in.
- 45 ✓

the face on the opposite side of the cut push. Shoveled in drain for awhile. Can't seem to get all the water out as much as we would like to. Not thawing very fast.

28- Cut wood for steamer. I started digging on the face, Tom set up steamer.

Working in from water level. I opened up a cut approximately 8' wide. Once I got all the vegetation and thawed mud off, we started steaming. Got one steam done then mucked out.

About 3' of mud then into one of the hardest packed gravels I've ever dug into. On water level we started finding the odd piece of angular bedrock.

Tried digging down into the water level, but that didn't go very good. Also finding quite a bit

of what looks like basalt. I broke one open, inside spotted all thru was pyrite. Started breaking them more often, just about all of them had some pyrite inside. Panning we got a small fine color in just about every pan with lots of coarse black sand. Face is now opened up 8' wide by 6' high. 3' of mud 3' of gravel.

May 29/92 - Set up steamer. Steamed into face. Got 2 steams in. Water starting to pose a problem, its now higher than when we finished the drain. Plugged out all the mud and then set the gravel aside. We went thru one of the drill holes but can't get into the bedrock because of water. We'll try later on.

30 - Set up test box and shoveled thru the gravels from the drain. Looked the same as before, except the blk sand seems to be a higher concentrate with finer grains. Getting small amounts of gold, all fairly fine. Lots of angular rocks intermixed with the rounds.

✓  
48

May 31 Put the gravel from the face thru the test box. Getting larger rocks, more large quartz boulders, black sand is coarser though no more gold than the drain. Its hard to tell until we can get right down into the bedrock. The garnets are all broken up, not to many round ones. Lots of smaller basalt round stones showing up also.

June 1/92 - Moved steamer down to lower Left Fork. Tom and I decided to try a couple

of holes down by the mouth,  
it narrows in on both sides  
with a mud slide on one side.  
We expect the mud will all be  
frozen down to bedrock.

Started cutting wood for  
steamer

June 2 - Set up steamer. Tom  
tended fire while I watched  
steam points. Frozen mud  
right under the moss, the  
steam points are going  
down very fast. Let them  
sink on there own and then  
let them steam till done.

✓  
51

Started mucking out. Top  
part of hole didn't thaw very  
good, just like two cones.

June 3 - Set up steamer. Tom on  
4x4 back to camp to get  
explosives. I cut wood and  
steamed holes for blasting.

✓  
52

When Tom got back we packed holes, then blasted

4 - Mucked out the shaft, a little rough around the edges and a bit large, but it worked good. Set up steamer and cut more wood. Only  
 53 filled steamer partways up with water. Did a quick steam, holding the points at certain heights, all the way down. Then steamed holes for blasting

June 5 - Mucked out center of shaft. Tom set charges in shaft and then blasted. I cut wood while  
 54 he was doing that. Then we both mucked out. Jumped in Nodwell and headed back out to town.

June 6+7 Town

June 8 - Back into Montana Ck.  
Loaded Nodwell and headed  
✓ back up to Left Fork.

55

June 9 - Set up steamer and started  
steaming. I watched points,  
Tom tended fire. Points  
going in with a bit of  
difficulty now. Seems like  
we're into gravel now. Will  
steam down and then let cook.

✓  
56 Finished steaming then mucked  
out, into gravels after a foot  
of mucking. Seems to be alot  
of black sand right from the  
top gravels. Panned but got  
no colors, black sand very fine.  
No big rocks yet but getting  
smaller basalt rocks

June 10 - Steamed down again, even harder  
57 ✓ to get the points down this time.  
Mucked out, getting colors.

but all very fine. A few big rocks but not that many. With all the black sand it must be we're on the edge. Dug down into the bedrock about a foot. Very hard digging, black sand is getting more scarce as we get into the bedrock. Still fine grain also. It seems with all of this fine black sand that we're on the edge of a channel.

June 11 - Went to get the test box from up the creek. Broke a track and 4 cleats on the Nodwell going to get it. Took off the cleats jumped on the 4x4 and went back down to Bismark Camp. Used up all of Co-old mining's oxygen, bending big bolts across the broken cleats. Finished welding bolts across cleats. Managed to find another

piece of rubber belting for the track. Stayed at Bismark camp.

June 12 - 4x4 back up to Left Fork  
 Got Nodwell track back together. Went and picked up the test box and made it back to L.F. camp no more problems.

✓  
59

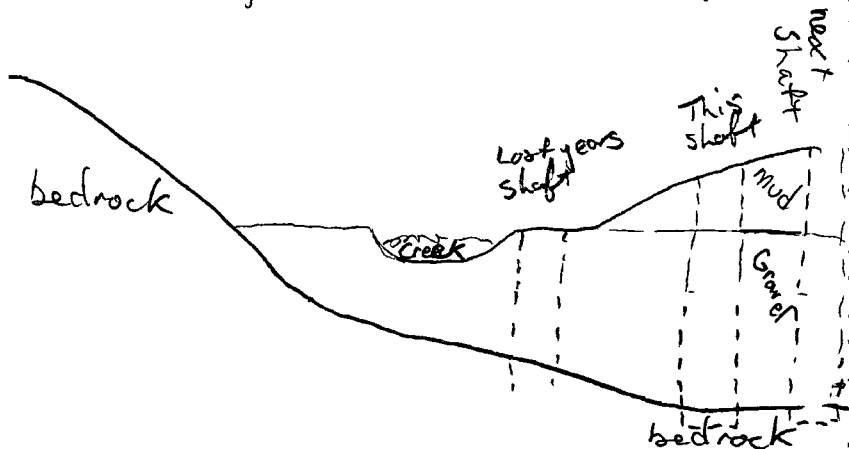
June 13 Put test box together and shoveled through the gravels we got out of the shaft. Maybe got thru a yard, worked out to ~~\$250~~ worth of gold. Lots of fine black sands, also quite a few garnets, all quite rough around the edges. Because of all the interest people are starting to get from Tom and I out here working, we decided to stake up Left Fork, and at the same

✓  
60

time California Creek.

61 ✓ 14 Tom over to California crk to stake 3 miles. I went up Left Fork and staked 5 miles.

62 ✓ June 15 - Moved steamer over, away from our last shaft, toward the mud bank. Solid bedrock on the Left Limit so moving to the right made alot of sense. Dug off shaned mud and vegetation.



16 - Cut a bunch of wood for the next shaft. Then jumped on the 4x4 and headed back down to main Bismark camp.

63 ✓ Took both trucks to town as we had different things to do.

17 18 - Town

June 19<sup>th</sup> - Tom stayed in town. I loaded up truck and headed into Montana Crk. Took my supplies to main camp Bismark.

64

June 20 - Headed up to Left Fork on 4x4 ATV. When I got there I took off all the cracked cleats I could find on the Nodwell then headed back down to Bismark crk.

65 ✓

June 21 - Rounded up as many big bolts as I could (7). Borrowed Terry Tousecs oxygen to band bolts over cleats, then welded them all up.

66 ✓

June 22 - Headed back up to Left Fork to put cleats back onto Nodwell. When I got there a bear was in the tent. When he heard me he went out the back of the tent.

What a mess. Tent ~~all~~ shredded up. All the pots and cans were everywhere. Only real damage was to the tent. I took what was left of the tent down.

67

✓

Cleaned up the site a little, then went and put Nodwell cleats back on. When I got finished I jumped on 4x4 and went back down to main camp. By the time I got back it was 1:00 A.M.

June 23 - Loaded up spare tent and supplies on 4x4 A.T.V. and headed back up to Left Fork.

68

✓

The bear had been back thro the night but there wasn't much for him to get into. Hopefully he won't be a problem. Set up new tent and washed up all the pots & pans and dishes that the bear had got ahold of.

Set up steamer. Built wood pad and filled steamer with water. Called it a day.

Tom made it in late.

x2

June 24 - Started fire for steamer. Steamed down. Tom tending fire while I pounded points. Points going thro mud easily. Let steam. Mucked out hole. Again steam wasn't a good one, uneven showing.

69

✓

70 ✓  
 June 25 - Set up steamer, started steaming. Tom tending points I tended fire. Tom steamed holes for blasting around collar of shaft, then steamed centre of shaft again. Set charges after steamer had run out. Blasted then mucked out. Started hitting gravel at the bottom of the steam.

71 ✓  
 26 - Set up steamer and steamed down into the gravel. Points not going thru the gravel as easy as the mud. Must constantly keep hitting points with hammer to drive them down. I tended points, Tom tended fire.

Tom and I cut and gathered wood for another steam. I jumped on 4x4 and headed back down to main camp. Helped Terry Toazae with a clean-up then headed to town.

June 27 - Headed back out to Montana Crk. Loaded 4x4 with supplies. Headed into Left Fork.

72 ✓  
Tom had steamed another round down and was mucking out when I got there. Finished helping Tom muck out. We piled all the gravels aside so we could test. Black sands are coarser than the shaft we had done previously. Bigger rocks with angular mixed shro-out. Panned the odd color all the way down.

73 ✓  
28 - Set up steamer, then steamed another round. Having a hard time getting points down. Just as we were finishing the steam, one of the steam points broke off at the "T". Mucked out shaft. About half way down we started hitting broken up bedrock. By the time we

got to the bottom of the steam it was nearly solid bedrock. Decided we had gone down far enough anyway.

74 ✓  
 June 29 - Set up test box and shoveled all the gravel from the shaft thru. Lots of heavy concentrates. Black sand quite coarse, lots of rough garnets. Broke open some of the Basalt rocks. Still pyrite mixed thru most of the ones we broke open. Gold is coarse but still only works out to \$2<sup>00</sup>/yd.

75 ✓  
 June 30 - Decided to take a walk up left fork to check things out. On the way up, I spotted an old cabin that we never saw before. Checked it out, the roof was

covered in and the logs were rotted so bad that we decided it wasn't worth digging out.

Wondered around the area looking for old shafts, but never found any.

Dug a hole up by Black Creek. Right on the edge of a small bench. Found rim bedrock, looks like a Muscovite shist, so badly deteriorated that we ended up digging into bedrock for a foot before we realized it was bedrock.

The odd color but hardly any black sand. Where Black crk. comes in, the bedrock on both sides of the crk narrows in with reefs from both side. Would be a good place for a shaft in the crk. Maybe next year.

Walked up the creek further. Found an old shaft. The largest

tree around was growing out of the middle of the tailings.

Dug around in the tailings. Looks like a gneiss or altered shist bedrock. Panned a few pans. Lots of black sands, garnets, all rough around the edges, basalt rock, etc.

Walked up onto the bench and built a small lean-to for the night. Bugs are crazy this year.

July 192 - Headed up the creek. About 2 miles up, Tom noticed a mud slide coming in off the left limit so we went to check it out. Quite a bit of water was coming down, exposing well rounded quartz pebbles. We followed the washed quartz up to about  $\frac{3}{4}$  the length of the slide. Here we found quite a high

76 ✓

concentration of quartz boulders

Tom took a pan and headed back down to where he could pan. I headed up further. The color of the mud changed to different colors, red, orange, and a green tinge. The quartz rocks started disappearing and up at the top of the slide was broken pieces of gneiss bedrock, none of it in place.

Stayed all day panning and checking out the area. High concentrates of fine black sands in every pan with one to five fine colors. Set up lean-to for the night.

July 2 - Headed up to the top of Left Fork. From there you could see back down. Left Fork is a very deep cut creek, where it looks like things happened quite suddenly. The Left.

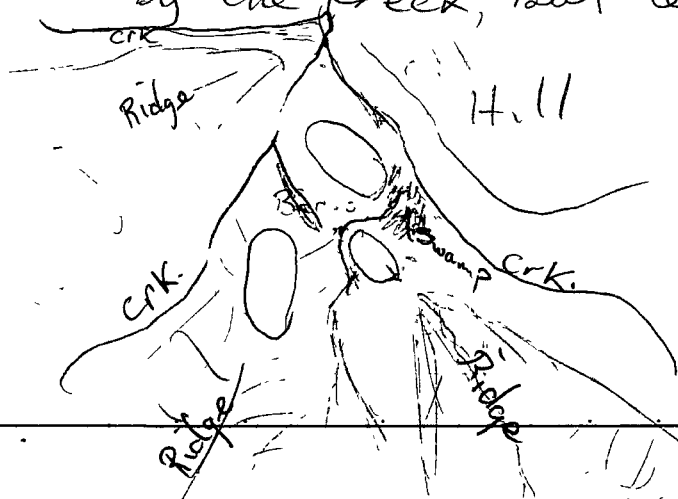
77  
✓

limit is very steep with 5 terraced areas, all very thin, and all about the same distance below the next one. Checked out the flats on top, every thing was a gneiss bedrock, all broken up. Set up lean-to on flats.

July 3 - Decided to head over to California crk. Headed up to the road that goes over to Rosebute. Walked along there until we got to the road down to Left Fork. Followed the left fork road until we got to the saddle between California and Left Fork. Going down the hill towards California crk. I spotted an outcropping of copper ore. Walked it out, appears to be about 150 - 200 ft.

of exposed one. Grabbed a few chunks and kept going. Bedrock is a gneiss up in the saddle. Seems to change once we got down into California crk. Seems to be fractured and altered and then re-cemented. Camped at a Fork on California that had 3 islands of bedrock.

July 4/92 - Checked out the islands of bedrock. Never seen any-  
 79 ✓ thing like it. Solid bedrock islands that were broken down by the creek, but left round.



Very deep cut crk also.  
 No terracing like on left  
 fork, but every thing seemed  
 to happen suddenly.

Took some pans out of  
 the creek. Small amounts of  
 blk sand, no garnets and small  
 amounts of quartz. About  $\frac{1}{2}$   
 way down we found a shaft  
 left by the old timers. Lots  
 of bedrock in the tailings so  
 he must of found something.

Took a pan but no colors.  
 Pitched the lean to down by  
 the mouth of California Crk.

July 5/92 - Went for a walk up the  
 ridge from camp. Hoping to  
 see up main Montana crk.

80

✓

Came across an old timers  
 cabin in fairly good shape.  
 Roof caved in, but walls still  
 standing and door still on.  
 Found an old shovel that

had been worked so much the top was worn flat.

Decided to dig in the cabin and check things out.

Took out most of the roof then started digging. Uncovered a stove along with stove pipe all in good shape. A few bottles, some pans, also some cans and an old box for butter.

Decided to go get the Nodwell to get this stuff back to camp. Left most of our gear and headed back to Left Fork.

July 6<sup>th</sup> - Jumped in Nodwell and headed up to California crk. Loaded gear and stuff from cabin.

81 Headed back to Bismark camp. Nodwell started making funny noises just past Fisher crk. Noises coming from transmission. l

took the inspection plate off, while Tom went back to Left Fork and got the 4x4. On taking off the inspection plate, I noticed that one of the inner bearings was completely destroyed. I then started taking out the transmission. When Tom got back, he helped me remove tranny. Loaded up 4x4 and headed to trucks. Then took both trucks to town.

7-8. Town - Tom tracking down Transmission for Nedwell  
 Found one in Whse \$310<sup>00</sup>

x1

July 9/92 - I headed back into Montana Crk. Decided to go for a walk up Fisher crk. Gathered supplies enough for a couple of days. Headed up to Mouth of Fisher crk on 4x4.

82 ✓

Parked 4x4 at mouth then walked up Fisher. Set up a lean-to about  $\frac{1}{2}$  ways up. The trip up Fisher showed Fisher crk to be narrow, fairly deep cut with no evidence of benches, like on the other right limit creeks of Montana. Found evidence of an old shaft right by the crk, but digging around I found no evidence of bedrock mixed with gravels. Either it was washed away by the crk, or the old timer never hit bedrock. No colors showed up in a pan, but b/k sand and garnets did.

July 10 - Walked up to the top of Fisher. It seems to be a lot bigger than indicates on the maps. The tribs. coming in from the right limit are not even shown on the maps, but I discovered them to be of good proportions.

83

✓

I walked up over the top until I could see both the top end of steel crk. and the top end of Blk crk. Then turned around and went down the opposite side of Fisher.

Dug a few holes by the trips.

Panned out some blk sands in every pan. Barnets in one pan and one lone color. Stayed at bear-to again.

July 11 - Packed up camp and headed back out to 4x4. Loaded 4x4 and headed back down to Bismark camp.

84 ✓  
 July 12<sup>x2</sup> - Torn in with the transmission for the Nodwell. Loaded it on the 4x4 and headed back up to Nodwell. Put tranny. back into Nodwell (not without a few troubles and lots of mosquito bites) Re-filled with oil and started it up. Yahoo!

Thing works great. Tom drove Nodwell, I took 4x4, and we headed back down to Bismark camp. At Bismark camp we changed stove's, putting in the old timers stove and stove pipe. It worked way better than our old one. Who knows. it may even bring us some good luck! ☺

July 13/92 - Packed up supplies for a trip up to the top end of Montana Crk. Loaded Nodwell and took it as far as California Crk. From there we had to walk. Headed up on to the bench on the left limit. Very big wide bench. Dug on the rim in a few places. Only got down to bedrock in a couple of places. A light brown shist bedrock, full of sulphides, small amounts of black sand, no colors. Pitched a lean-to with a screen across the

86

✓

front for the bugs. Worst year  
in my lifetime for mosquitoes.

July 14 - Valley opens up very wide,  
Tributaries are alot bigger than  
they seemed before. Dug around  
in the first 2. Panned blk  
sand, a few garnets, one color  
on the first trib., but none  
on the second, lots of quartz  
pebbles, mostly angular in shape.  
Widesloping muskeg flats, bet-  
ween the 2 trib. Bench sort  
of disappears for awhile. There  
is the remains of a larger bench  
up higher, that we checked out.  
But it seems to be all sluffed  
bedrock, so totally destroyed  
that nothing is left. Pitched  
lean-to about 3 miles up, on an  
island of bedrock between the  
second and third trib.

July 15 - Dug around on the third tributary. Small amounts of blk. sand, no garnets, lots of Muscovite shists. Some shist deteriorated to an angular sand and some shist still in hard rock form.

✓  
88

The bench seems to be spotty in this area. The top end of the creek opens up into a big wide bowl.

Lots of mud everywhere, looks to be very deep on the upper ends.

Headed up to the top end. Very deep cut. Bedrock outcrops everywhere. Took a good look at the lay of the crk, from the top down, lots of small tribbs. off of the top end. More than shows, off of the maps we have. Lots of muskeg flats between each tributary. Headed back down on the Right Limit.

Started digging a small rim hole on what looked like a destroyed edge of a bench, but only turned up sluffed bedrock. From 2 ft down. Right limit alot steeper than the left limit. Pitched the lean-to right near edge of bench.

July 16<sup>th</sup> - Headed back down. Right limit to steep to walk on in comfort, so we headed across to the lower bench on the left limit. Dug a hole on the rim there. Hit bedrock rim right away. Two feet of mud, one foot of gravel then bedrock. Panned the gravel/bedrock contact. No colors, small amounts of blk sand. Headed to Nodwell, then stopped the night at Left Fork camp.

- Picked up test box and steamer and loaded in to Nodwell. Cleaned up around site and talked about things we should do later on crk.

Stayed one more nite on left Fork. Took down tent and stove and loaded in to Nodwell for trip back down to Main Camp.

Unloaded Nodwell when we got to Bismark Camp.

- 4x4 back across to Steele Crk landing, and headed back to Dawson.

YMP  
92-0321 064

## Summary of Prospecting Program (1992)

Submitted by: Tom Morgan and Reid Haines

- After shafting Left Fork in 1991, and discovering interesting prospects. We decided to do another, more informative shaft on Left Fork.
- On arriving at Left Fork, we found old drill holes by one of the old cat pushes. After checking around and finding large quartz boulders in the creek, below cat push, we decided to shaft beside drill hole closest to creek.
- Driven out of shaft by water, we decided to try draining cat push and dig face on the upstream side.
- Starting approximately 75' below cat push. We steamed drain and got cat push drained of a large percentage of water.
- Face opened up on top end of cat push. Water level not low enough yet to get down to solid bedrock. Face dug into where shaft and drill hole located.
- Decided to put shaft down in Frozen

ground beside creek. Found a good spot down by camp area. Bedrock outcropping on left limit comes down right to creek.

- First shaft had fine coarseness to the gravels, indicating we were probably beside the edge of a channel.
- Second shaft was coarser grained gravels, and larger rocks, though rocks not as large as the quartz boulders we found in the creek. Indicating we're still not in the center of channel.
- Went for a prospecting trip up Left Fork. Found some old timers cabin and shaft. Also found an interesting mud slide with quartz boulders intermixed. Panned colors nearly every pan.
- Decided to head back down California creek. On the way over the top from Left Fork we discovered what looked like a copper ore outcropping.
- California creek was deep cut with no visible benches. Found another old timers shaft and cabin.
- Walked up Fisher creek, because of

rumours from some old timers in Dawson City, and curiosity.

- Prospected upper Montana creek, benches and creek bottom. Valley very wide at the top end. Benches were just about totally destroyed.

25 MAR 81  
17 OCT 80  
24 SEP 80  
18 JUL 80  
10 APR 80  
9 APR 80  
22 JAN 80  
19 OCT 80  
2 OCT 80  
14 SEP 80  
28 AUG 80  
26 MAR 80  
23 FEB 80  
9 NOV 80  
19 OCT 80  
12 SEP 80  
30 AUG 80  
29 AUG 80  
18 AUG 80  
16 JUL 80  
15 JUN 80  
13 JUN 80  
12 JUN 80  
28 Feb. 84  
27 Mar. 72  
22 Mar. 56

# SHEET 105G-6

## QUARTZ & PLACER

LATITUDE 61° 15' to 61° 30'  
LONGITUDE 131° 00' to 131° 30'

SCALE 1:31,680

ISSUED UNDER THE AUTHORITY OF THE MINISTER  
OF  
INDIAN AFFAIRS AND NORTHERN DEVELOPMENT

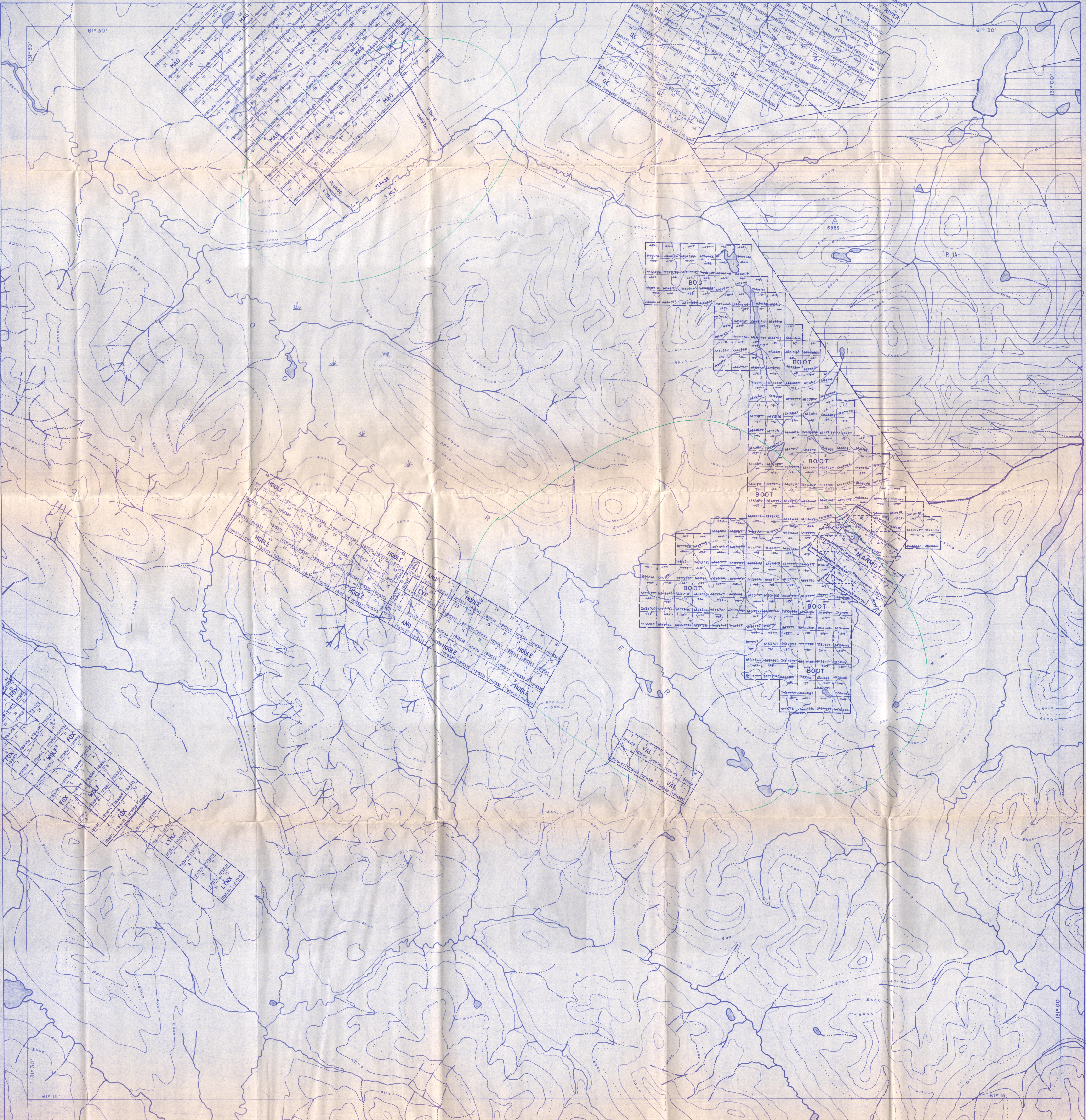


### NOTICE

THIS MAP IS ISSUED AS A PRELIMINARY GUIDE  
FOR WHICH THE DEPARTMENT OF INDIAN AFFAIRS  
AND NORTHERN DEVELOPMENT WILL ACCEPT NO  
RESPONSIBILITY FOR ANY ERRORS, INACCURACIES  
OR OMISSIONS WHATSOEVER.

Note: Entry on certain lands is withdrawn from staking  
in cross-hatched areas to facilitate the settlement  
of Native Land Claims without prejudice to Existing  
Surface and Subsurface Rights.

105G-12	105G-11	105G-10
105G-5	105G-6	105G-7
105G-4	105G-3	105G-2



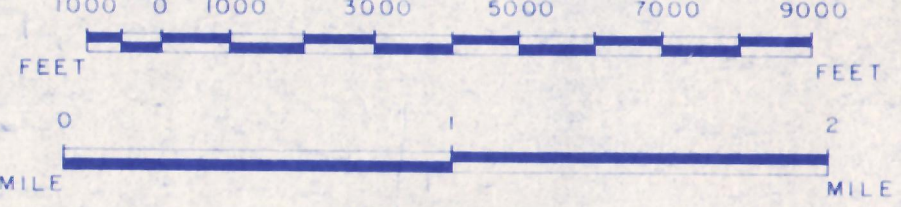
# PLACER

WORK LOCATIONS

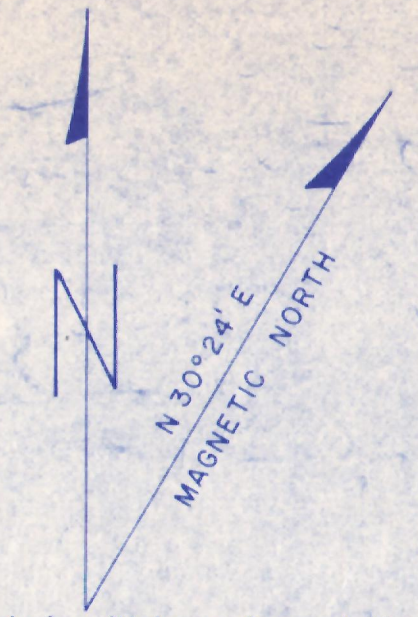
LATITUDE 63°30' TO 63°45'  
LONGITUDE 139°00' TO 139°30'

CANADA  
DEPARTMENT OF NORTHERN AFFAIRS AND NATIONAL RESOURCES  
NORTHERN ADMINISTRATION AND LANDS BRANCH  
MINING AND LANDS DIVISION

SCALE 1:31,680



ISSUED UNDER THE AUTHORITY OF THE MINISTER OF NORTHERN AFFAIRS AND NATIONAL RESOURCES



Note: Entry on certain lands is withdrawn from staking in cross-hatched areas to facilitate the settlement of Native Land Claims without prejudice to Existing Surface and Subsurface Rights.

115-0-13	115-0-14	115-0-15
115-0-12	115-0-11	115-0-10
115-0-5	115-0-6	115-0-7

## NOTICE

THIS MAP IS ISSUED AS A PRELIMINARY GUIDE FOR WHICH THE DEPARTMENT OF INDIAN AFFAIRS AND NORTHERN DEVELOPMENT WILL ACCEPT NO RESPONSIBILITY FOR ANY ERRORS, INACCURACIES OR OMISSIONS WHATSOEVER.

TOPOGRAPHY COMPILED FROM 1:50,000 NATIONAL TOPOGRAPHIC SERIES  
CONTOUR INTERVAL 500 FEET  
SURVEY INFORMATION COMPILED FROM LEGAL SURVEYS, BY DRAFTING SERVICES 1982.

21 MAY 89	22 OCT 92
22 MAY 89	23 OCT 92
23 MAY 89	24 OCT 92
24 MAY 89	25 OCT 92
25 MAY 89	26 OCT 92
26 MAY 89	27 OCT 92
27 MAY 89	28 OCT 92
28 MAY 89	29 OCT 92
29 MAY 89	30 OCT 92
30 MAY 89	31 OCT 92
31 MAY 89	1 NOV 92
1 JUN 89	2 NOV 92
2 JUN 89	3 NOV 92
3 JUN 89	4 NOV 92
4 JUN 89	5 NOV 92
5 JUN 89	6 NOV 92
6 JUN 89	7 NOV 92
7 JUN 89	8 NOV 92
8 JUN 89	9 NOV 92
9 JUN 89	10 NOV 92
10 JUN 89	11 NOV 92
11 JUN 89	12 NOV 92
12 JUN 89	13 NOV 92
13 JUN 89	14 NOV 92
14 JUN 89	15 NOV 92
15 JUN 89	16 NOV 92
16 JUN 89	17 NOV 92
17 JUN 89	18 NOV 92
18 JUN 89	19 NOV 92
19 JUN 89	20 NOV 92
20 JUN 89	21 NOV 92
21 JUN 89	22 NOV 92
22 JUN 89	23 NOV 92
23 JUN 89	24 NOV 92
24 JUN 89	25 NOV 92
25 JUN 89	26 NOV 92
26 JUN 89	27 NOV 92
27 JUN 89	28 NOV 92
28 JUN 89	29 NOV 92
29 JUN 89	30 NOV 92
30 JUN 89	1 DEC 92

DAWSON 9 SEPT. 82

NOTE: FOR QUARTZ SEE 115-0-11  
FOR PLACER WITHIN DASHED LINE SEE 1:10 000

