

VAN KRICHTBAUM
#92056

Table of Contents

Part A - Summary of Exploration Activity

1. Analysis of Results
2. Expenses
3. Log of daily activity
4. Daily journal

Part B - Technical Report

5. Maps showing traverses and sample sites
6. Assays.
7. Analysis of Results

Analysis of Results

Nephrite was the main mineral projected for in this project. It was found in all four main areas projected not including the helicopter reconnaissance. Only one large deposit was found but the quality is poor. Two claims were made for this adjoining the Bill's claim in 105 B/16.

Small amounts of nephrite of good 'B' quality were found in all areas. However, they are not economic deposits due to the small quantities discovered.

Assays for the Wolverine Lake and 'Front Range' areas were done with the Platinum + 31 package by Northern Analytical Labs in Whitehorse, and subcontracted to International Plasma Laboratory in Vancouver. See the copies of assay results included, entitled 'IPL'.

Samples for the above were 6 stream sediments and 15 rock samples. Stream sediments were assays 92-100 to 92-105, and the rocks are assays 92-001 to 92-015.

Analysis of Results p.2

Several types of mineral associations were indicated by the assays of I.P.L. These include gold-copper-silver-mercury-manganese, nickel-cobalt, copper-zinc-silver, copper-lead-zinc-silver-arsenic-antimony-vanadium, nickel-cobalt-chrome-antimony, nickel-cobalt-zinc, cobalt-antimony-chrome, zinc-vanadium, and gold-nickel-zinc-chrome. Results for platinum and palladium were disappointing, to say the least.

Assays for the Hasselburg Lake area and for the helicopter reconnaissance were done with Gold + 29 package and the Platinum + 4 package (for most samples) by Bondar-Clegg in Vancouver. Three samples received whole rock analysis. See the copies of assay results included, entitled 'Bondar-Clegg.'

Samples included 3 soil samples 92-201 to 92-203, 3 stream sediments 92-106 to 92-108, 1 pan concentrate 92-109, and 29 rock samples 92-017 to 92-044.

Analysis of Results p.3

Several types of mineral associations were indicated by the assays from Bondar-Clegg. These include gold-copper-vanadium, gold-arsenic-nickel-manganese, gold-silver-mercury, gold-nickel-chrome-vanadium, lanthanum-yttrium-strontium, nickel-chrome, chrome-nickel-copper-zinc-cobalt, gold-nickel-chrome, and vanadium-strontium.

The ultramafic areas prospected showed the expected mineralogy overall, and were enriched in nickel and copper in all areas, but not to a significant degree. No large deposits were found for these. Chromite was found widespread in some of the areas, but little platinum and palladium enrichment was found associated with them.

Further prospecting is indicated for the assay sites with high values for copper, nickel, and gold. More prospecting needs to be done for nephrite in the area around Bill's claim, especially to the south.

P. 2

#92056 - Yukon Mining Incentives Program

Expenses Submission

1992 Season

1. Camp Costs

- a. 11 days at 1 person = 11 @ 52.85/day = 581.35
- b. 4 days at 2 persons = 12 @ 52.85/day = 634.20
- c. 12 days at 3 persons = 36 @ 52.85/day = 1902.60
- d. 1 day at 4 persons = 4 @ 52.85/day = 211.40

\$3328.55

2. Travel costs - by segments, incurred

- a. 42 Km @ 38.5¢/Km = 16.17
- b. 230 Km @ 38.5¢/Km = 88.50
- c. 250 Km @ 38.5¢/Km = 96.25
- d. 230 Km @ 38.5¢/Km = 88.50
- e. 92 Km @ 38.5¢/Km = 35.42
- f. 115 Km @ 38.5¢/Km = 44.28
- g. 44 Km @ 38.5¢/Km = 16.94

= notes on above

\$386.06

- a. Drive to trailhead, return, from main camp.
- b. Camp to Watson Lake, return for maps, etc. (claims maps)
- c. Camp to Wolverine Lake area, return, for pick up after walk out from float plane trip to Wolverine Lake.
- d. Camp to Watson Lake, return, to send out assays
- e. Delivery of Argo to trailhead, twice, from main camp
- f. Camp to Watson Lake to send out assays.
- g. Camp to Simpson Lake, return, for float plane trip.

1992 Expense Submission for #92056 - continued

3. Airco rental (Burbank industrial model) #
 Air segments incurred @ 25% of rental cost of 100.00/day
 a. 7 days @ \$25.00/day = 175.00
 b. 6 days @ 25.00/day = 150.00

\$325.00

4. Gasoline for Airco
 a. 149.64 liters @ 59.4¢/l. = 88.89
 b. 145.14 liters @ 68.9¢/l. = 100.00

\$188.89

5. Float plane service
 a. Watson like flying service - receipt supplied

\$529.65

6. Maps and reports

a. Claims maps = 4.28
 b. Claim map = 1.07
 c. Yukon Geol. No. 2 report = 24.56
 d. Yukon Geol. No. 3 report = 24.56

\$54.47

- receipts supplied

7. Prospecting supplies

a. Soil bags, Zn test kit
- recpt. supplied

\$ 96.30

8. Postage, freight

a. Greyhound for above supplies = 11.13

b. Post office - mail assays = 3.58

- recpts supplied

\$ 14.61

9. Helicopter

a. Frontier Helicopters Watson Lk.

- amt. to be invoiced - see sheet attached.

\$ 3853.28

10. Assays

a. Northern Analytical Labs (NAL)

\$ 502.10

b. Bondar - Clegg Lab (B-C)

1166.03

\$ 1668.13

Total

10,445.94

VAN KRICHBAUM
#92056 YMIP

Daily Activity Log - July

Day	Date	Description
1.	July 6	Trip to Watson Lake to get supplies
2.	7	Prospect to 'Front Range' (105 H/3) - setup camp
3.	8	Prospect Front Range S.W. of camp
4.	9	Prospect Front Range S.W. of camp
5.	10	Prospect Front Range N.W. of camp
6.	11	Prospect Front Range - camp to Campbell Hwy
7.	13	Trip to Watson Lake - Arrange float/plane trip
8.	15	Float plane Wolverine Lk (105 G/8) prospect to camp
9.	16	Prospect Wolv. Lake Area N.W. of camp
10.	17	Prospect Wolv. Lake Area S.W. of camp
11.	18	Prospect Wolv. Lake Area N of camp toward Camp Hwy
12.	19	Prospect Wolv. Lake Area (105 G/9) to Campbell Hwy.
13.	20	Inspect rock w microscope, pkg. for assay
14.	21	Trip to Watson Lake - send out assays, supplies
15.	22	Finish packing for next trip - prepare Argo
16.	23	Prospect Tuchtua trail, Argo to Hasselburg Lake
17.	24	Prospect Hasselburg Lake to plateau camp
18.	25	Prospect creek by main camp (105 A/13)
19.	26	Prospect plateau W. of camp
20.	27	Prospect plateau N.E. of camp
21.	28	Prospect plateau N. of camp
22.	29	Prospect plateau E. of camp
23.	30	Prospect plateau W. of camp
24.	31	Prospect plateau N.W. of camp

Daily Activity Log - August/Oct.

Day	Date	Description
25	Aug 1	Prospect plateau N.W. of camp (105 A/13)
26	2	Prospect plateau S. of camp
27	3	Prospect plateau N. of camp
28	4	Prospect camp creek, Argo to Hasselburg Lake
29	5	Prospect Tutchina trail - Hasselburg Lk. to Camp. Hwy
30	6	Pack for trip to White Lake by float plane
31	8	Cancel trip by float plane to White Lake
32	10	Pack for helicopter trip - Argo to Hasselburg Lk.
33	11	Helicopter reconnaissance & prospect W. of Camp. 1
34	12	Prospect S.W. of camp (105 B-16)
35	13	Prospect N.W. of camp
36	14	Prospect E. of camp to Hasselburg Lake
37	15	Prospect Hasselburg Lk to Little Jimmy Lk. to Camp. Hwy
38	16	Inspect rock w. microscope for assays
39	Oct. 9	Inspect rock w. microscope - pkg for assays
40	10	Trip to Fort St. John to mail out assays

8 a.m	2	14	1992
9	3	15	MONDAY
10	4	16	6
11	5	17	(07) July
12	6	18	
1 p.m	13 7	19	© quo vadis 28th Week

DOMINANT®

1992

Go to town - Van + Sarah -
 Get trailer at Ben's of camp gear.
 Get supplies for prep. trip tomorrow
 Get maps ready - visit Ming recorder
 and buy road claims maps
 - Get photocopy of Ming recorder's
 copy of article on World Record Nephrite
 boulder belonging to Max. Rosquist.
 Pack backpacks + camp gear.

105 H/3

8 am 2
9 3
10 4
11 5
12 6
1 p.m. 13 7

14
15 TUESDAY 1992
16 7
17 (07) July
18
19 © quo vadis 28th Week

DOMINANT*

1992

Rainy - 3 people. Drive to Km 132

Hike in to camp site - take, 9 hrs.

Rock exposures limited on valley floor of Frances River - much is glacial till + source not known for rock encountered.

Glacial till rocks (exposed on game trails only) were predominantly greenstone schists. Occasional white milky quartz with no mineralization apparent. No samples.

Rock exposures ascending mt. on steep slopes were greenstone schists. No mineralization apparent. No samples taken.

105 H/3

8 am 2
9 3
10 4
11 5
12 6
1 p.m. 13 7

14
15 WEDNESDAY 1992
16 8
17 (07) July
18
19 © quo vadis 28th Week

DOMINANT*

1992

Rain in AM
3 people

Climb + prospect center and SE side of ridge to first creek valley.

Rock predominating the area was greenstone schist / serpentinites.

Near top of the ridge from camp was a flat of rhyolite and white milky quartz. Rhyolite was porous with some dark brown black dull coatings on fractures and red blotches apparent. Samples taken.

Ridge had another depressed flat area about midway. Talc alterations were present and 2 quartz projections on SE side were examined. One was mineralized with green staining and silvery shiny metallics. Sample taken. Return to camp on SE side - greenstone only. One white milky quartz, no mineralization.

105 H/3

8 a m	2	14	THURSDAY 1992 9
9	3	15	
10	4	16	
11	5	17	
12	6	18	
1 p m	13 7	19	

DOMINANT

Cloudy

- 3 people

Climb + prospect NW side of ridge and around basin of and down 1st Creek.

NW side of ridge was almost entirely greenstone schist without obvious mineralization. White milky quartz seams were present, appearing barren.

No samples taken. Some rhyolite present.

At 1st Creek manganese mineralization was present. Samples taken. Around the basin of creek was carbonate rock and layers of serpentinite, rhyolite and carbonates with easterly strike dipping almost vertically. South of the stream was phyllitic shales with some mineralization coating the talus. Samples taken. Also noted was a white quartz rhyolite showing midway on south side of stream.

105 H/3

8 a m	2	14	FRIDAY 1992 10
9	3	15	
10	4	16	
11	5	17	
12	6	18	
1 p m	13 7	19	

DOMINANT

Cloudy

- 3 people

Prospected basins west + north by camp, and sampled stream sediments of all creeks.

Basin north of camp was uninteresting - all phyllitic shales and greenstone schist. Stream sed. only sample taken. Pass over to next stream flowing SE.

Basin was prospected and a serpentine outcrop. Sample taken of one rusty area of serpentine. Stream sed. sample taken also. Serpentine was slickensided. Basin to north had thickened of serpentine and gabbro along with greenstone schist. Nephrite was found near top of mid basin but very schistose. Quantity perhaps 5-10 tons, low grade. Along upper east wall was a large marbled seam with blocks of talus downhill. Stream sed. samples taken

105 #/3

8 am	2	14		1992
9	3	15	SATURDAY	11
10	4	16		
11	5	17	(07) July	
12	6	18		
1 p m	13.7	19	© quo vadis	28th Week

DOMINANT*

1992

Cloudy + rainy in PM
- 3 people

Hike out back to road along different route (see map). Stream sed. samples taken of lower basin stream and of creek from the basin further north.

Rocks were examined in both creeks. First creek was primarily greenstone/serpentinites with some quartz and rhyolite. No mineralization noted. No samples taken of rocks.

At second creek rock was more rhyolites and some metallic appearing mineralization between rhyolite bands was noted. Samples taken. Also bright red spots in rhyolite were noted. Some grey and clearish quartz was noted but did not appear mineralized.

8 am	2	14		1992
9	3	15	SUNDAY	12
10	4	16		
11	5	17	(07) July	
12	6	18		
1 p m	13.7	19	© quo vadis	28th Week

DOMINANT*

1992

Rest day from hike out.

8 am 2 14 1992
9 3 15 MONDAY 13
10 4 16
11 5 17 (07) July
12 6 18
1 p m 13 7 19 © quo vadis 29th Week

DOMINANT

Cloudy, some rain

Go to Watson Lake to get supplies and make arrangements for Watson Lake Flying Service for a floatplane - Cessna 185 - to Wolverine Lake.

Arrange floatplane for Tuesday July 14 at 2:00 at north end of Simpson Lake.

Buy more food and some Snaps at mining recorder. Return to Miner's Junction and pack for trip into Wolverine Lake Area

8 am 2 14 1992
9 3 15 TUESDAY 14
10 4 16
11 5 17 (07) July
12 6 18
1 p m 13 7 19 © quo vadis 29th Week

DOMINANT

Rain all day. Lowering ceiling of clouds.

Go to Tachitua Highways Camp and advise of bad weather to Watson Lake Flying Service.

Airflight postponed to 10:00 AM on WED. July 15 because of the low ceiling conditions.

105 G/8
 8 a m 2 14 1992
 9 3 15 WEDNESDAY 15
 10 4 16
 11 5 17 (07) July
 12 6 18
 1 p m 13 7 19 © quo vadis 29th Week 1992

DOMINANT* Raining in afternoon
 1 Person

Fly out to Wolverine Lake from
 north end of Simpson Lake.

Land at Wolverine Lake at East end
 on north side. Prospect beach
 gravels at landing and wade across
 incoming stream to inspect large
 boulders - they were orange granites.

No samples. Gravels of schist/shales.
 Hike up mt. to base camp. Schisty
 granstone, not appearing mineralized,
 for most of the hike. Some, but
 very little, white milky quartz
 float. Some quartz seams were
 observed of white, gray and somewhat
 clear material. No mineralization seen.
 No samples taken.

Took stream sed. sample of stream
 entering N.E. end of Wolverine Lake.
 Used gold pan as little sed. available (CHM)

105 G/8
 8 a m 2 14 1992
 9 3 15 THURSDAY 16
 10 4 16
 11 5 17 (07) July
 12 6 18
 1 p m 13 7 19 © quo vadis 29th Week 1992

DOMINANT* Rain
 1 Person

Prospect area to the N.W. of camp.

Much of the area is greenstone that
 rusts brown only a small amt. It
 isn't appreciably mineralized.
 Some areas had greenstone phylolite
 mixed in bands with flow textures.
 Some quartz seams were present. Rock
 appeared layered. Strike 50° NE, dip 80° SW.

Some areas were all rhyolite with bright
 red small spots, some also with white quartz
 seams. Some mineralization apparent.
 Samples taken. Area around central
 basin small lake was the same
 as along the east side of the ridge
 to the N.W. of camp (above).
 Some plagioclase feldspar seams were
 noted also.

105 G/8
 8 am 2
 9 3
 10 4
 11 5
 12 6
 1 pm 13 7
 14 1992
 15 FRIDAY
 16 17
 17 (07) July
 18
 19 © quo vadis 29th Week

DOMINANT: Rain
 1 Person

Prospect area to south and SW of camp. More varied geology than the day previous.
 Ridge to SW of camp was greenstone, no apparent mineralization as was the southward of valley to SW of camp. Beyond to SW. was slickensided and massive serpentines. No mineralization was observed except 1 piece of rusty limonitic float. Sample taken.
 Rusty massive serpentine knoll was sampled as was nearby phylolite area, again with bright red spots + some mineralization coatings in cracks. Samples taken.
 Mt. to south of camp was massive serpentine, no mineralization seen, no samples taken. A few boulders at base were very poor nephrite, not translucent and full of magnetite.

105 G/8 to 105 G/9
 8 am 2
 9 3
 10 4
 11 5
 12 6
 1 pm 13 7
 14 1992
 15 SATURDAY
 16 18
 17 (07) July
 18
 19 © quo vadis 29th Week

DOMINANT: Partly cloudy.

Pack up camp. Hike for mt. 1/2 way to road.

- Encountered rock fields lower in basin. Most were rusty weathered serpentinites with some talc ^{rock} and possibly a nephrite boulder of 200 lbs. Not good quality. Sample taken of rusty serpentinite.
- Crossed to rock outcrop of ridge to the East. Some weathered rusty serpentine. No mineralization seen, no samples taken.
- Walk across brush area to the north. Occasional rock encountered was all serpentines.
- Climb to small mt. to north. Lots of silica in shale layers with lots of black/brown coating and some mineralization inside (pyrite?). Sample taken. Deposit exposed over 2 acres. Strike was to NW, dip to SE at about 45°. Lots of quartz crystal lined cavities.

105 G/a

8 a m	2	14	
9	3	15	SUNDAY
10	4	16	1992
11	5	17	19
12	6	18	(07) July
1 p m	13 7	19	© quo vadis 29th Week

DOMINANT Partly cloudy. 1992

Pack up camp for hike out.

Few exposures were encountered at lower altitudes. Thick brush. All schists. Climb up next "mnt" closer to road. Very thick cover, no rock exposed, all vegetated.

Downslope to road was very steep, brushy. No rocks encountered.

At road rock was the usual till goods of the Fullerton River valley, a wide mixture of various kinds of rocks. Meet pickup at prearranged point by Wolverine Creek area + get guide back to Miner's Junction Camp.

8 a m	2	14	
9	3	15	MONDAY
10	4	16	1992
11	5	17	20
12	6	18	(07) July
1 p m	13 7	19	© quo vadis 30th Week

DOMINANT* 1992

1 person

Check over all sample rock collected to date for mineralization with a 20X - 40X binocular microscope and attempt to identify some of the mineralization.

Asses rocks for probability of being worthy for assay.

Record assay numbers, locations and descriptions and tag them.

Box up all rocks and stream sediment samples for assay.

Prepare maps for next trip to the bush.

8 a m 2
9 3
10 4
11 5
12 6
1 p m 13 7

14
15 TUESDAY 1992
16 21
17 (07) July
18
19 © quo vadis 30th Week

DOMINANT*

1992

Go to Watson Lake

1 person

Take samples to town and send to assayer. Northern Analytical (662-4968)

Go to mining recorder and check claims maps for area NW of Haselburg Lake. (Next trip)

Go to Frontier Helicopters to see about helicopter arrangements for upcoming trip.

Buy supplies for next trip coming up.

Preparation of Argo = 4x4 for coming trip.

Pack gear for trip tomorrow.

8 a m 2
9 3
10 4
11 5
12 6
1 p m 13 7

14
15 WEDNESDAY 1992
16 22
17 (07) July
18
19 © quo vadis 30th Week

DOMINANT*

1992

Rain

Work on Argo, decide to postpone trip till tomorrow due to weather.

Pack more food as weather looks bad, also more warm clothing + tarps.

105 A/14 to 105 A/13
 8 am 2 14
 9 3 15 THURSDAY 1992
 10 4 16 23
 11 5 17 (07) July
 12 6 18
 1 p m 13 7 19 © quo vadis 30th Week
 DOMINANT* 1992

3 people

Took 4x4 + Argo to end of logging
 Road. Prospect Road exposures.

Argo to Little Jimmy Lake and on to
 Hasselburg Lake.

All rock encountered was glacial till
 and eskers gravel on logging road.
 Rock was mostly granodiorite, some
 gneissic. Other rock of lesser quantity
 were serpentines, black shales
 with quartz veins. Some talus
 mafic groundmass white phenocryst
 porphyres, and quartz (mostly
 white with no mineralization)

105 A/13
 8 am 2 14
 9 3 15 FRIDAY 1992
 10 4 16 24
 11 5 17 (07) July
 12 6 18
 1 p m 13 7 19 © quo vadis 30th Week
 DOMINANT* 1992

Rain
 3 people

Argo from cabin at Hasselburg Lake
 up mountain to the northwest
 Cut some trail where needed to
 get camp up on the plateau to
 the northwest of Hasselburg
 Lake. Taking lots of food for long stay.
 Most areas traversed were vegetation
 covered. Where encountered rock
 was glacial erratics or bedrock of
 serpentine nature. Higher up
 the rock was bedrock that was
 serpentine or schisty serpentinite
 Plateau was vegetated with
 erratics of serpentine. Some rocks
 approach nephrite with large
 blotches of apparently magnetite
 mineralization - like the jade by
 Hasselburg Lake to the west.
 Set up permanent camp on plateau.

105 A/13

8 am 2
9 3
10 4
11 5
12 6
1 p m 13 7

14
15
16
17
18
19

1992
SATURDAY
OPENING CEREMONY OF
THE XXVth SUMMER OLYMPIC
GAMES IN BARCELONA
(07) July

25

© quo vadis 30th Week

DOMINANT*

Drizzle
3 people

1992

Roger and Sarah pack up materials not to be packed by myself back out and take Argo back out.

Prospect area around camp; esp. in the creek by camp.

Found evidence of nephrite with lots of blotches but good color, and of small size (to 35 lbs).

Found lots of rock types in creek, especially lots of dark gabbro, some with apparently chalcopyrite. Other rock was various types of mafic and ultramafic with lots of black mineral grains, probably magnetite. One piece is almost pure magnetite, as lodestone.

Possibility of some chromite as grains also - black conchoidal crystals. Some rocks are very large erratic - up to several tons.

105 A/13

8 am 2
9 3
10 4
11 5
12 6
1 p m 13 7

14
15
16
17
18
19

SUNDAY

1992

26

(07) July

© quo vadis 30th Week

1992

DOMINANT*

Some rain
3 people

Roger + Sarah take Argo back out to Miner's Junction, from Hasselbury Lake area. Road nearly washed out.

Prospect to west of camp at camp

Creek headwaters flat. Rocks is much the same as in creek - erratic, some very large; lots are dark mafic gabbro with black tetrahedral crystals and chalcopyrite.

Others are serpentines or talc. No nephrite.

Prospect a north/south gulch to the west of camp. Almost all rocks

are talc, some several hundred lbs. - probably at bedrock. Contains lots of rusty decayed mineralization (magnetite?) (pyrite?). Some black tetrahedrals without rust. Samples taken. Serpentine at head cross fractured and fine grained, pitted, rusty. Samples taken.

105 A/13
 8 a m 2 14 | 1992
 9 3 15 | MONDAY
 10 4 16 | 27
 11 5 17 | (07) July
 12 6 18 |
 1 p m 13 7 19 | © quo vadis 31st Week

DOMINANT^s Cool wind 1992
 #

1 Person Refer to grid map for sites.

Prospect area northeast of camp.
 Boulders past creek are dark gabbro
 and serpentine type rocks - some v. large.
 At ridge overlooking C-3 to the East is
 much talc plus the mix above. A little
 white quartz is present - not mineralized.
 At C-3 flat is serpentine and brown
 weathering dunite (?) / hornblende mix
 and slate type rock. Sample soil at C-3
 Toward C-4 rock was more spinifex textured,
 some black veining (chromite?). Some
 rock is not veined brown stained dunite
 and porphyritic serpentine. Possibly
 one nephrite piece, but on soft side.
 C-4 also possibly another piece of nephrite
 Sample taken. More black veining
 Sample taken.
 Go back higher up a bit to camp. Reverse
 of above encountered.

Samples
 taken

105 A/13
 8 a m 2 14 | 1992
 9 3 15 | TUESDAY
 10 4 16 | 28
 11 5 17 | (07) July
 12 6 18 |
 1 p m 13 7 19 | © quo vadis 31st Week

DOMINANT^s Cool day 1992

1 Person

Prospect North of camp to north side of
 mt. that is north of camp. Along saddle
 ridge south of mt. is mostly serpentine
 that is light tan weathering. Some light whitish
 weathered one are near nephrite (too soft).
 Some erratics SW of mt. are granitic and
 pegmatitic, also some ls/w. gabbro.
 Layered pegmatite appearance along saddle
 Dip is vertical, strike 40° E of N.
 Near ridge top south side of mt. is a white
 layer, v. heavy w a light green cast. Sample
 taken. Top of mt. is serpentine / talc flat
 No black veining on east side or anywhere.
 Go down N-E slope of mt. toward C-4. North
 of C-4 near stream find nephrite stones
 of a few pounds - nice color & translucency.
 Take stream sed. sample upstream of
 C-5, and soil sample at B-C 4k. Follow
 stream upstream. All serpentine some
 near nephrite but too soft. Back to camp

Back

105-A/13

8 am	2	14	1992
9	3	15	WEDNESDAY
10	4	16	29
11	5	17	(07) July
12	6	18	
1 p m	13 7	19	© quo vadis 31st Week

DOMINANT*

Sunny, cool

1992

1 person

Prospect East of camp down south side of major creek leaving plateau on the East side.

Dammed creek just east of camp. No viable minerals except black sand. Saved last portion of 3 pans as HMC sample.

Most nephrite seen on creek was small and within 1/2 mile of camp. Largest was 250 lb. (?)

Below gorge there was less brown weathered serpentine. Some white weathered rock maybe nephrite. Samples taken. No metallic mineralization until second narrowing 1/2 miles downstream. Encountered pyritic quartzite layered, just skinned. Sample taken. Below this was no serpentine in stream.

At major bend to south was rock point on E. Serpentine was slightly mineralized. Sample taken. Also present was talc schist going into creek. Across creek was white, poorly weathered nephrite (?) all small (20 lb.)

105-A/13

8 am	2	14	1992
9	3	15	THURSDAY
10	4	16	30
11	5	17	(07) July
12	6	18	
1 p m	13 7	19	© quo vadis 31st Week

DOMINANT*

Sunny intermittently

1992

1 person

Prospect west of camp, past talc gulch, up to talc crest of plateau. Past talc gulch is dark stained rock in wet edge of flat. Mostly all talc or serpentine, steric is only on outside.

Rock toward crest is serpentine and serpentine with talc seams. Some mineralization, probably magnetite. Sample taken.

Ridge crest is all talc, in a large flat. Filled, probably in iron mineral as some rust staining is present. Sample taken.

View at 140° south east past little Jimmy Lake is a very red gossan area on south facing steep slope. To remember, Chock + mark route back to camp. return walk from south creek from camp planned in a few days.

105-A/13

8 a m	2	14	FRIDAY 1992 31 (07) July 31st Week
9	3	15	
10	4	16	
11	5	17	
12	6	18	
1 p m	13 7	19	
© quo vadis		1992	

DOMINANT* Very windy, cold

1 person

Prospect area Northwest of camp to largest/highest mt. on the plateau, at 5300 feet altitude.

Hike along plateau ridge crest N.W. of camp. Rock is same as ridge to the south further - serpentine, serp. w. talc seams, and talc. Ridge is mostly talc. B-3

Mountain's S.W. facing slope is mostly serpentine, some with black grains magnetite(?) / chromite(?). Some black seams encountered, may be chromite. Samples taken.

One site above treeline has quartz adularia seam with float. No metallic mineralization seen but shows promise of epithermal quartz fluids. Take samples.

Grizzly bear encountered at distance of less than 200 feet - doesn't seem to thank you. Return to camp.

105-A/13

8 a m	2	14	SATURDAY 1992 1 (08) August 31st Week
9	3	15	
10	4	16	
11	5	17	
12	6	18	
1 p m	13 7	19	
© quo vadis		1992	

DOMINANT* Cold, cloudy

1 person

Prospect backside of mt. to the northwest of camp - same as on previous day (Aug. 31).

Walk along previous days route only higher up mt. from grizzly encounter. Start real prospecting between A-4 + A-5. Point is light to brown weathering serpentine. No mineralization found.

Cross around high point to the north onto flat of serpentine, then go out past C-5 to east toward B-5 to point. Point is serpentine, some translucent, may be nephrite but not tough enough.

Sample taken. B-5 soil sample taken also. Go to AB-4½, found mottled gabbro with chalcopyrite(?) - like in creek by camp? Sample taken.

Go to trough. Vegetation covered. Take soil sample. Rock in area is serpentine. Follow trough back to camp. Nothing new.

105 A/13

8 am 2
 9 3
 10 4
 11 5
 12 6
 1 p m 13 7

14 SUNDAY 1992
~~EDIBAY~~
 15
 16 2
 17 (08) August
 18
 19 © quo vadis 31st Week

DOMINANT* Partly cloudy, cool

-4004

1 person

Prospect area to south of camp. Walk toward string bog. Rock changes from gabbroic to greenstone to serpentinite, then is vegetated, so little rock at surface. Down stream south of bog is mostly plate with serpentine/talc and some quartz. Cross over ridge pointing south to intersect other stream flowing south from plateau. At first ridge is whitish green/grey serpentinite. At ridge crest is talc boulders, some 200 tons? going west it changes back to serpentinite. Go down steep gulch of serpentinite. Creek below is mostly schist and phyllite with some white quartz + serpentinite. No nephrite found. Stream sediment + soil samples taken along main stream. Stream sed. sample taken at right fork too. Follow previously marked trail by talc ridge "home" in the dark.

105 A/13

8 am 2
 9 3
 10 4
 11 5
 12 6
 1 p m 13 7

14 MONDAY 1992
~~SATURDAY~~
 15
 16 3
 17 (08) August
 18
 19 © quo vadis 31st Week

DOMINANT* Cool

-4004

3 persons

Roger + Sarah should be leaving Miner's Junction today to get me tomorrow. I prospect close to camp in case they arrive today. Within camp view about 1/2 miles away at furthest. Prospect trough from mt to the NW of camp that becomes the creek by camp. Seems to be strings of similar rock to the creek some but mostly serpentinite. Source area for nephrite(?) Some gabbro. Most rock is serpentinite, some light weathering to east of trough. Take soil sample at B-4. Walk on east to north west rim of mt to north of camp. North west rim has weather resistant prominence of brown weathered serpentinite or dunite with some black green mineral present (magnetite?). Cross over top + back to camp.

105 A/13

8 am	2	14	TUESDAY	1992
9	3	15	SUNDAY	4
10	4	16		
11	5	17	(08) August	
12	6	18		
1 p m	13 7	19	© quo vadis	31st Week

DOMINANT* Partly cloudy, cool

3 persons

Roger + Sarah due today to pick me up (in AM)
Prospect creek again. Most of rocks
in creek were found on the plateau
'in situ' so probably are somewhat local
erratics. No local source found for the lodestone

Found several rocks that weather to a
round boulder with round softball
to baseball size lumps in them that on
weathering stick out of other rock
Don't appear any more mineralized than
the rest - take sample.

Pack up camp. Roger/Sarah arrive in Argo
Leave at 5:00 for Hasselburg Lake cabin.

Cross small boulder field by string
bog. Take break. Prospect it.

Boulder field is mostly light weathering to rusty
talc and serpentinite. A few gabbros,
greenstone and white quartz. No
apparent mineralization or nephrite.

105 A/13 to 105 A/14

8 am	2	14	WEDNESDAY	1992
9	3	15	MONDAY	5
10	4	16	Civic Holiday (Ont)	
11	5	17	(08) August	
12	6	18		
1 p m	13 7	19	© quo vadis	32nd Week

DOMINANT* Rain, cold

3 persons

Argo out to Miner's Junction from
Hasselburg Lake cabin. Leave
late due to rain during day.
Rocks show good color due to being
wet from rain.

Prospect rock from Hasselburg Lake
to Little Jimmy Lake along Argo
trail. Mostly granite to monzonite
with minor serpentinite, quartz, gneiss,
and greenstone. Some porphyry of
mafic and white phenocrysts.

Serpentinites increase toward Little Jimmy
Lake. Quartz with rusty vein staining
is found near Little Jimmy Lake Sample
taken.

Past Little Jimmy Lake to East on Argo trail
along n. side of mt. to the south is
mostly granite to monzonite again, also
many are gneissic. Some serpentinites,
less porphyry, more schists. No nephrite.

8 am 2
9 3
10 4
11 5
12 6
1 p m 13 7

14 THURSDAY
15 ~~TUESDAY~~
16
17 (08) August

1992

6

18
19 © quo vadis 32nd Week

DOMINANT*

~~1991~~

Plan trip to White Lake to prospect
for nephrite there.

8 am 1 2
9 3
10 4
11 5
12 6
1 p m 13 7

14 FRIDAY
15 ~~WEDNESDAY~~
16
17 (08) August

1992

7

18
19 © quo vadis 32nd Week

DOMINANT*

Rain, fog

Phone calls to ~~4004~~
536-2231

Rain + fog - low ceiling. Phoned
Watson Lake Flying Service - only
500' visibility at Watson - got paid
trip to Watson to Thurs.

8 a m

2

9

3

10

4

11

5

12

6

1 p m

13 7

14

SATURDAY 1993

15

~~FRIDAY~~

8

16

17

(08) August

18

19

@ quo vadis

32nd Week

DOMINANT

Rain, low clouds

1991

Still no go for flight to White Lake
due to weather.
Decide to cancel trip + get ready for
helicopter trip to Musselburg Lake
area on Aug. 11

8 a m.

1 2

9

3

10

4

11

5

12

6

1 p m

13 7

14

SUNDAY 1994

15

~~FRIDAY~~

9

16

17

(08) August

18

19

@ quo vadis

32nd Week

DOMINANT

1991

8 am 2
9 3
10 4
11 5
12 6
1 p.m. 13 7

14 MONDAY 1992
15 ~~SATURDAY~~
16 10
17 (08) August
18
19 © quo vadis 32nd Week

DOMINANT*

Argo

Pack food & camp for Hasselburg Lake area trip.

Get maps together and plan day for helicopter.

Make flightplan map for best use of helicopter.

Roger + Sarah take Argo to Hasselburg Lake Area

Confirm - helicopter trip schedule
536 - 7766

105 G-1 to 105 H/4 to 105 B/16

8 am 2
9 3
10 4
11 5
12 6
1 p.m. 13 7

14 TUESDAY 1992
15 ~~SUNDAY~~
16 11
17 (08) August
18
19 © quo vadis 32nd Week

DOMINANT*

Mostly sunny, rain cloud late
4 people Argo

Fly helicopter trip prospecting the Hasselburg Lake area. East of Whitefish Lake, and picked up samples from behind the Campbell Range from previous hike on July 7-11, 1992

See map of helicopter flight route for references to sites below.

Samples taken from next to Bill's claim on 105 B/16 of crystalline nephrite, at site A. Nice green, coarse samples taken at site B at basin lower creek of possible chromite mineralization

Samples taken at site C of quartz in same basin. Nephrite found, poor quality. Samples taken at site C of quartz field and pools that were dried nearby.

Samples taken at site D of previous found pipe stone. Approx 50 lb.
Roger + Sarah return to Miner's Junction

105 B/16

1992

8 am 2
9 3
10 4
11 5
12 6
1 pm 13 7

14 WEDNESDAY
15 ~~MONDAY~~
16 12
17 (08) August
18
19 © quo vadis 33rd Week

DOMINANT* V. cold works on top - possibility of ¹⁹⁹² hypothermia very real.

Examine area around to West of small basin lake
Found quartz carbonate w poss. chromite veins
also quartz w. silver metallics. Samples taken
Ascending steep slope to upper basin lake
found possible chromite mineralizations
Samples taken.

At upper basin found chromite veins in rocks
and some nice colored green coarse crystalline
mineral (nephrite?) but little quantity.

On mt. top plateau found lots of coarse
green rock of poor color & translucency
(nephrite?). Also a seam of limonitic to
rusty red slate (?) with pyritization

Samples taken

Staked 2 claims, the Sara-Dawn + Laura-Chris

No. 1
Sarah-Dawn
Aug. 12
1992
E
1500' Left
Van Krichbaum

No. 1
Laura-Chris
Aug. 12
1992
W
1500' Right
Van Krichbaum

105 B/16

1992

8 am 2
9 3
10 4
11 5
12 6
1 pm 13 7

14 THURSDAY
15 ~~TUESDAY~~
16 13
17 (08) August
18
19 © quo vadis 33rd Week

DOMINANT

1992

Examine west of small basin lake at base of
cliffs in talus. Some mineral segregation as
Talc, serpentine, slate, quartzite - layers?
At base of south basin lake rock was a rusty
phyllitic silicified layered deposit. Took sed.
sample of streamlet draining lake through above.
Crossed to other side of basin and ascended
steep slope of basin. White rocks present
were talc, mixed in with plate + serpentine.
Went high around west side of mt. See 8
saw gray + 2 cubs. below. Talus slope is
slate + phyllites, some schisty. Garnets (2mm
reds) in phyllite schist. Lots of quartz but
doesn't appear mineralized. Some very
poor nephrite(?) - opaque.

At North of mt. is gossin area with silicification
Samples taken of rock + soil (clay). Coatings
of iridescent material.
Some green material found w. orange + black
minerals in it. Sample taken.

105 B/16 to 105 A/13

8 a m

2

9

3

10

4

11

5

12

6

1 p m

13 7

14 FRIDAY 1992

15 ~~WEDNESDAY~~

14

16 (08) August

17

18 © quo vadis

33rd Week

DOMINANT*

4994

Assistant has a severe allergic (?) reaction of hives, itch, red blotches. May be penicillin allergy. Decide not to stay another day. Pack camp + head out. Cross mt. to east of basin on north side and across plateau. Mt. is serpentine based rock where exposed. Much is overgrown and swampy to south side of mt. At plateau crest picked up samples stashed on Aug. 14 at base of mountain. Found 1 small nephrite rock. Hike across previously prospected plateau to Argo and motor to cabin at Hasselburg Lake. Arrive there after dark. Snowed on us that morning. Allergic reaction symptoms still excessive on assistant. Should be out for help tomorrow.

105 A/13 to 105 A/14

8 a m

2

9

3

10

4

11

5

12

6

1 p m

13 7

14 SATURDAY 1992

15 ~~THURSDAY~~

15

Assumption Day

16 (08) August

17

18 © quo vadis

33rd Week

DOMINANT*

1004

Argo out from Hasselburg Lake. Toward Tschitua River Road site where truck is at.

One section of Argo road has a bouldery moraine (?) section East of Little Jimmy Lake with some red rocks. Samples taken - appear somewhat like possibly rhodonite. Some is jasper.

At Large Boulder Creek some of the serpentine appears mineralized. May just be magnetite. Sample taken.

Arrive at truck stash site and load up. Starting to drizzle. Drive to Thayer's Junction and get phone call to hospital. Assistant apparently has penicillin reaction. Bed treatment and further watching necessary.

8 am	2	14	SUNDAY 1992	
9	3	15	FRIDAY	16
10	4	16		
11	5	17	(08) August	
12	6	18		
1 pm	13 7	19	© quo vadis	33rd Week

DOMINANT' 4804

8 am	2	14	MONDAY 1992	
9	3	15	SATURDAY	17
10	4	16		
11	5	17	(08) August	
12	6	18		
1 pm	13 7	19	© quo vadis	33rd Week

DOMINANT' 4807

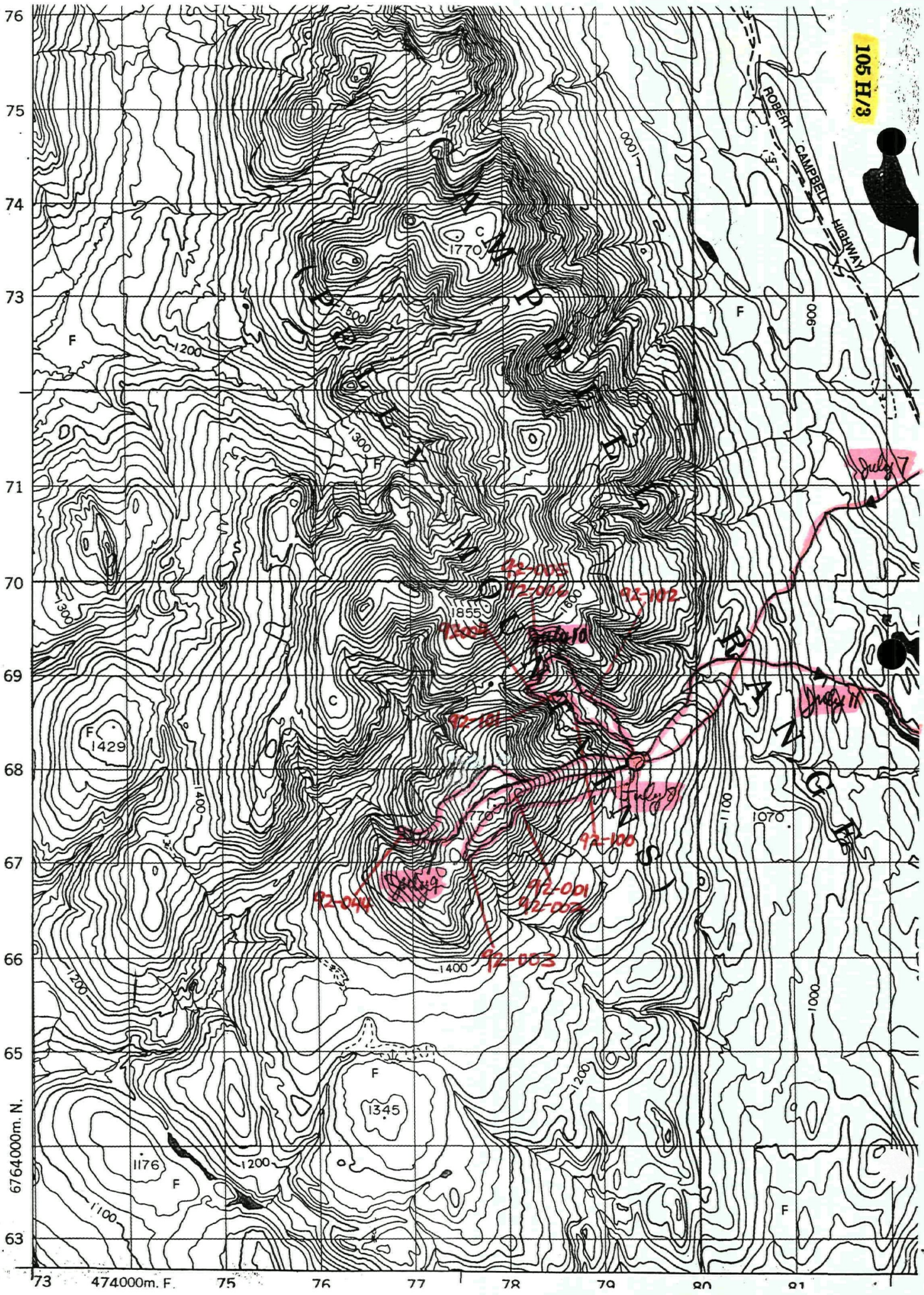
Unpack rock/soil/stream sed.
samples and rest of equipment.

Start going over rocks with 20X
-40 X microscope for signs of
mineralization to decide which
rock to send for assay. Do this
the rest of the day, the next day,
and make final decisions later.

[assay samples finally sent in
October]

ME. RIC/MÉ

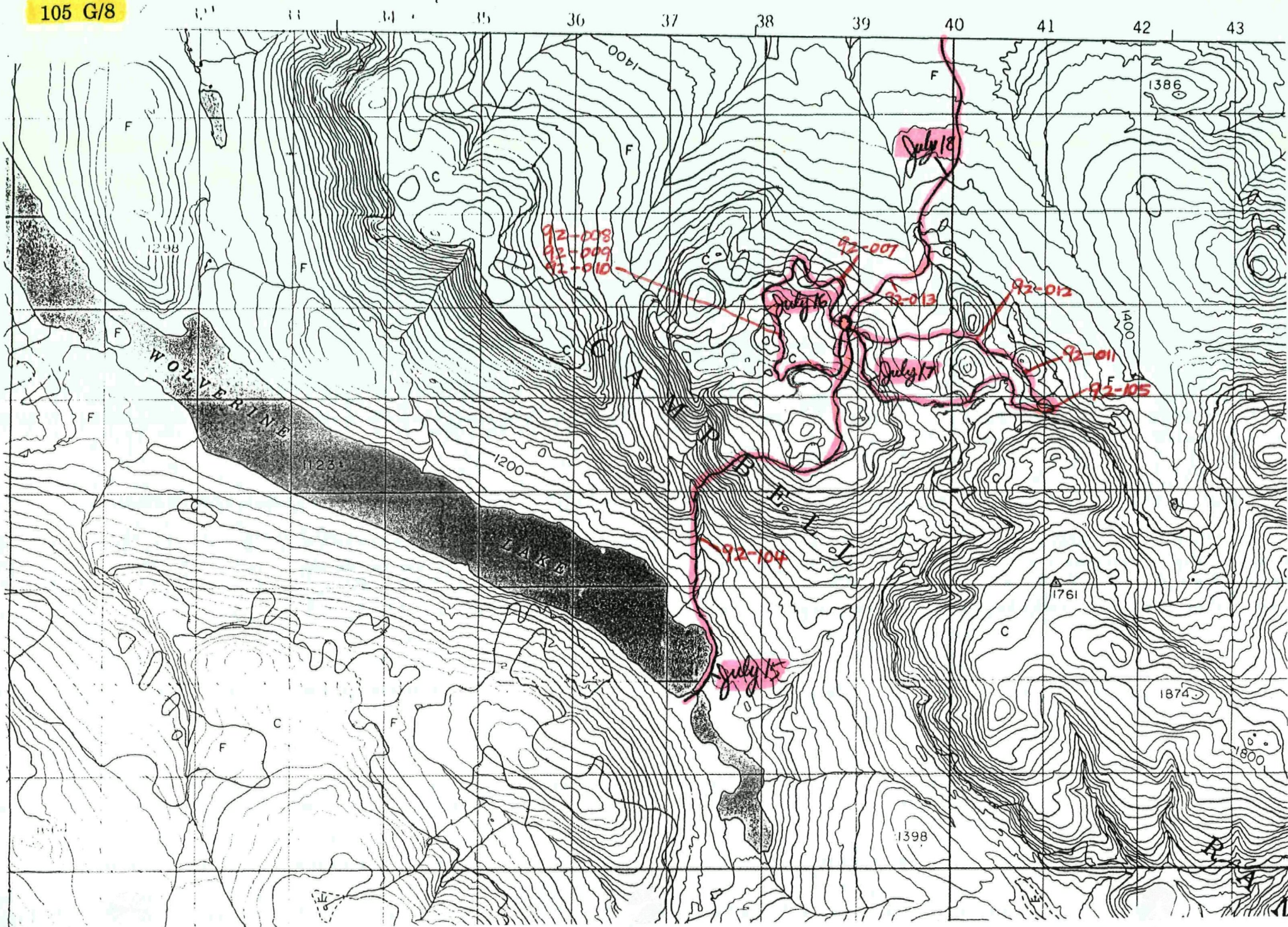
105 H/3

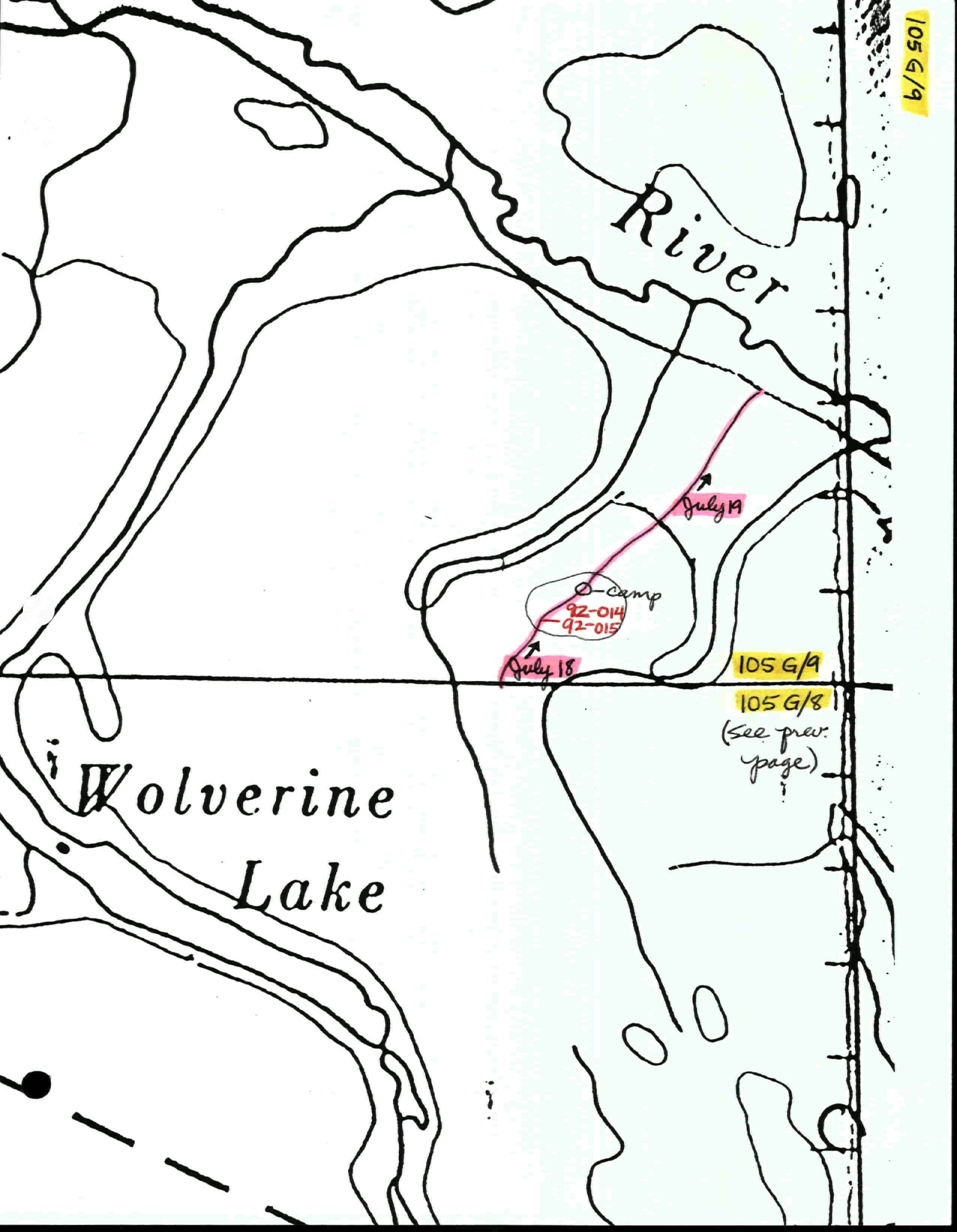


6764000m. N.

73 474000m. E. 75 76 77 78 79 80 81

105 G/8





River

Wolverine
Lake

camp
92-014
92-015

July 19

July 18

105 G/9

105 G/8

(See prev.
page.)

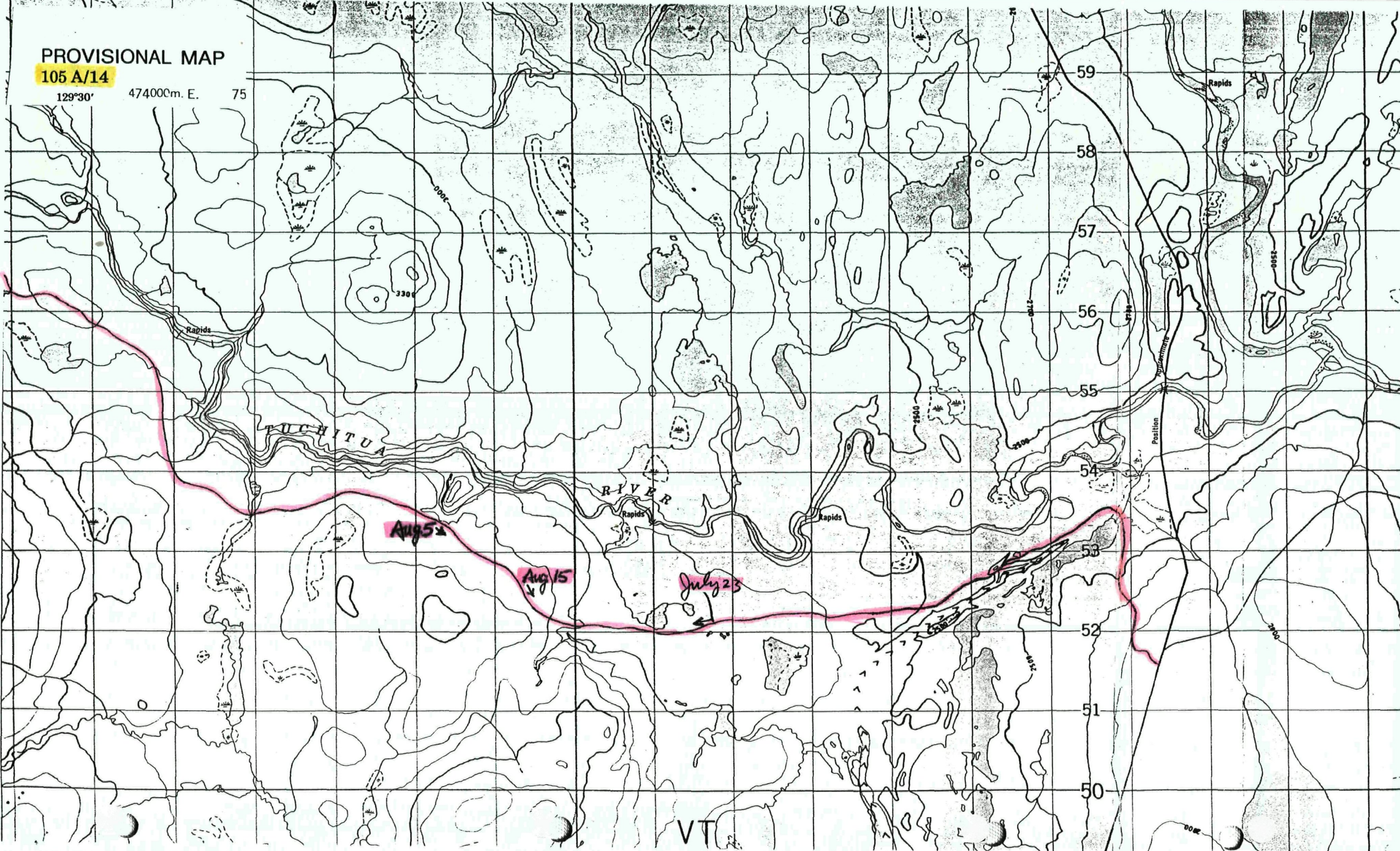
PROVISIONAL MAP

105 A/14

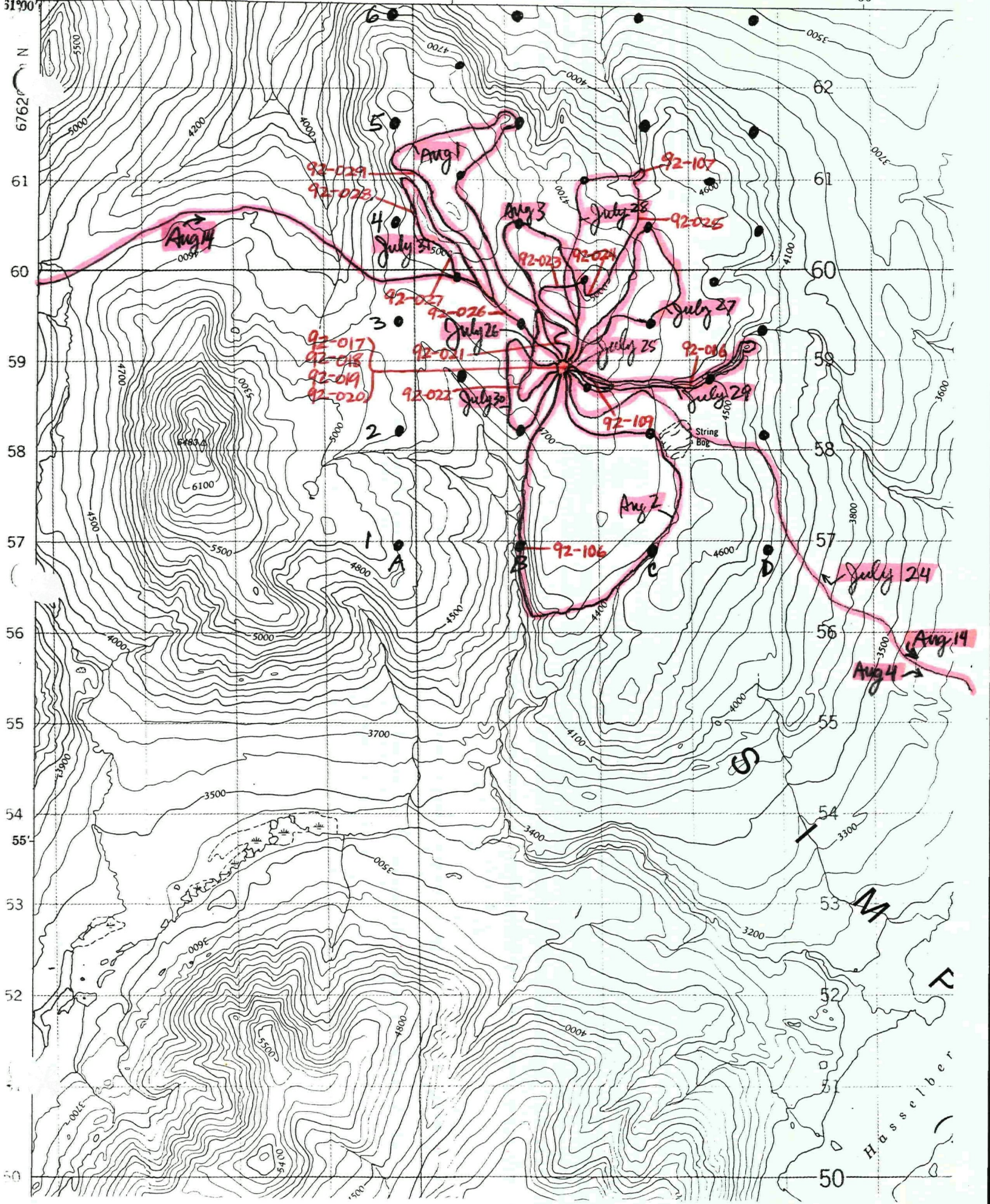
129°30'

47400m. E.

75

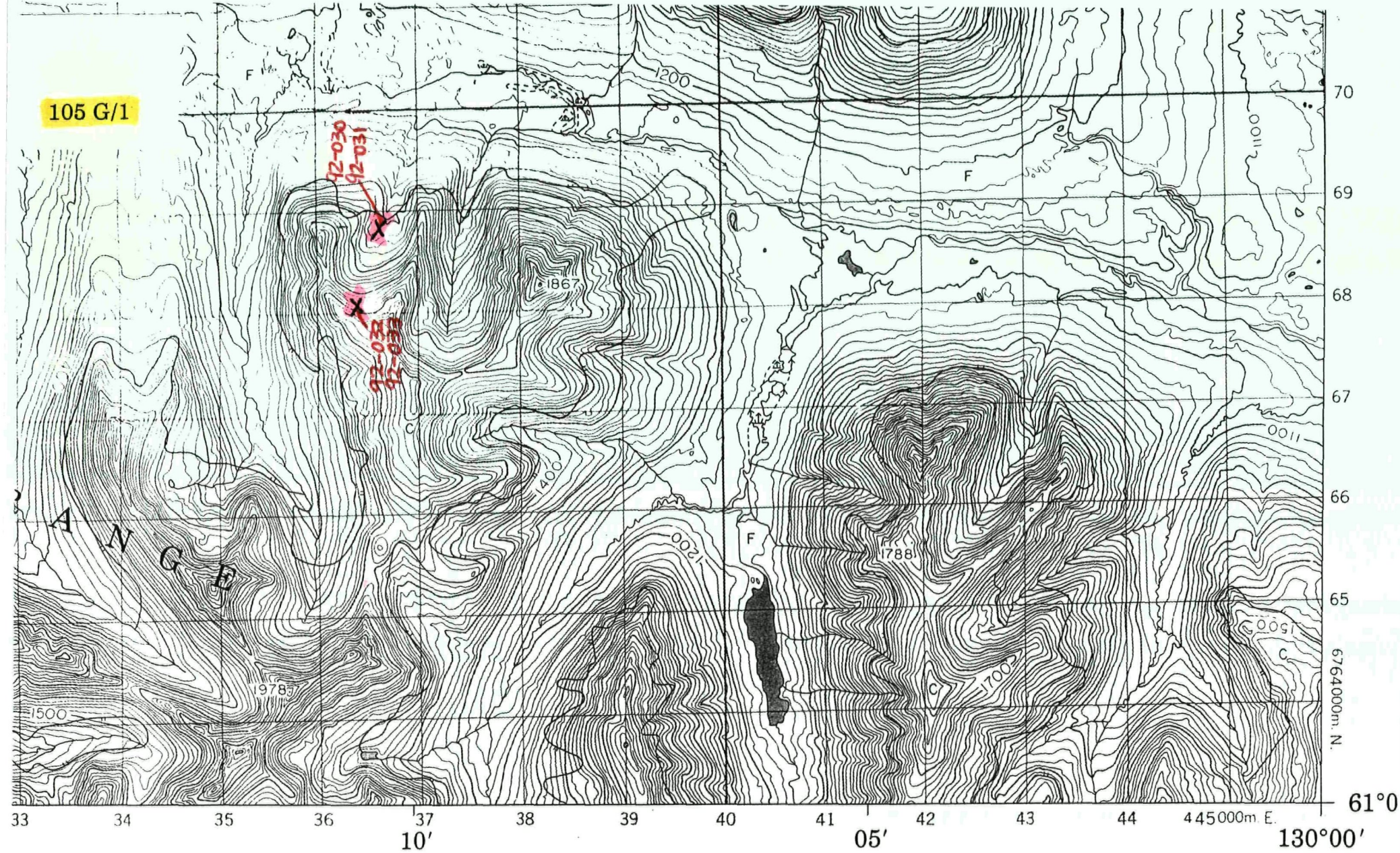


VT



Hassler

105 G/1



ALTITUDES EN MÈTRES

ÉQUIDISTANCE DES COURBES 20 MÈTRES

SYSTÈME DE RÉFÉRENCE GÉODÉSIQUE NORD-AMÉRICAIN 1927

PROJECTION TRANSVERSE DE MERCATOR

POUR TOUT RENSEIGNEMENT CONCERNANT LES REPÈRES ET BORNES ALTIMÉTRIQUES, S'ADRESSER AUX LEVÉS GÉODÉSQUES, DIRECTION DES LEVÉS ET DE LA CARTOGRAPHIE, OTTAWA.

ÉTABLI PAR LA DIRECTION DES LEVÉS ET DE LA CARTOGRAPHIE, MINISTÈRE DE L'ÉNERGIE, DES MINES ET DES RESSOURCES, OTTAWA. PUBLIÉE EN 1984.

CES CARTES SONT EN VENTE AU BUREAU DES CARTES DU CANADA, MINISTÈRE DE L'ÉNERGIE, DES MINES ET DES RESSOURCES, OTTAWA, OU CHEZ LE VENDEUR LE PLUS PRÈS.

© 1984. SA MAJESTÉ LA REINE DU CHEF DU CANADA, MINISTÈRE DE L'ÉNERGIE, DES MINES ET DES RESSOURCES.

REEK
TOIRE DU YUKON



447000m. E. 48 49 50 51 52 53 54 55 56

679000m.

89

88

87

86

84

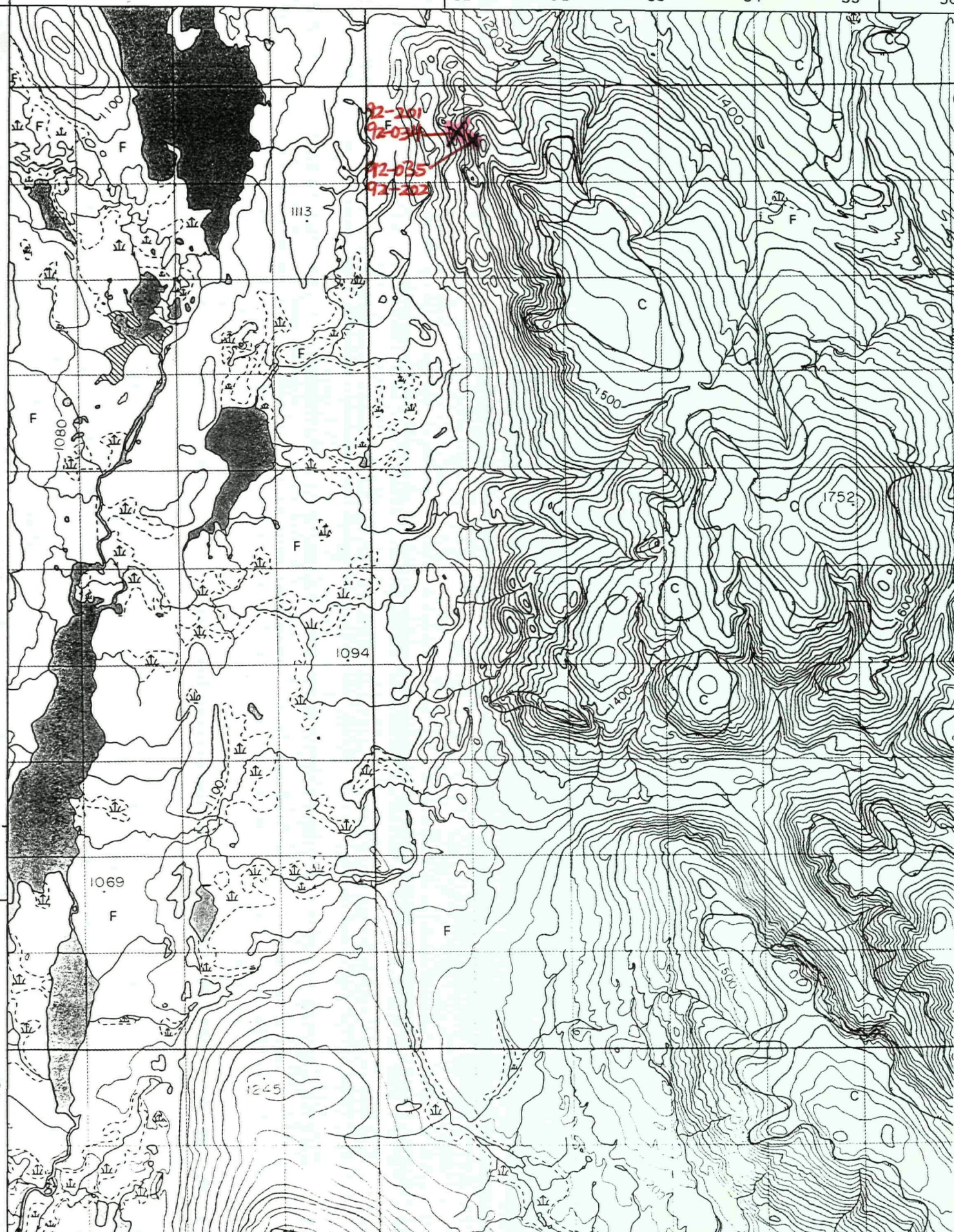
83

82

81

80

9



EDITION 1

CARTE PROVISOIRE

105 B/16

38

39

40

41

05'

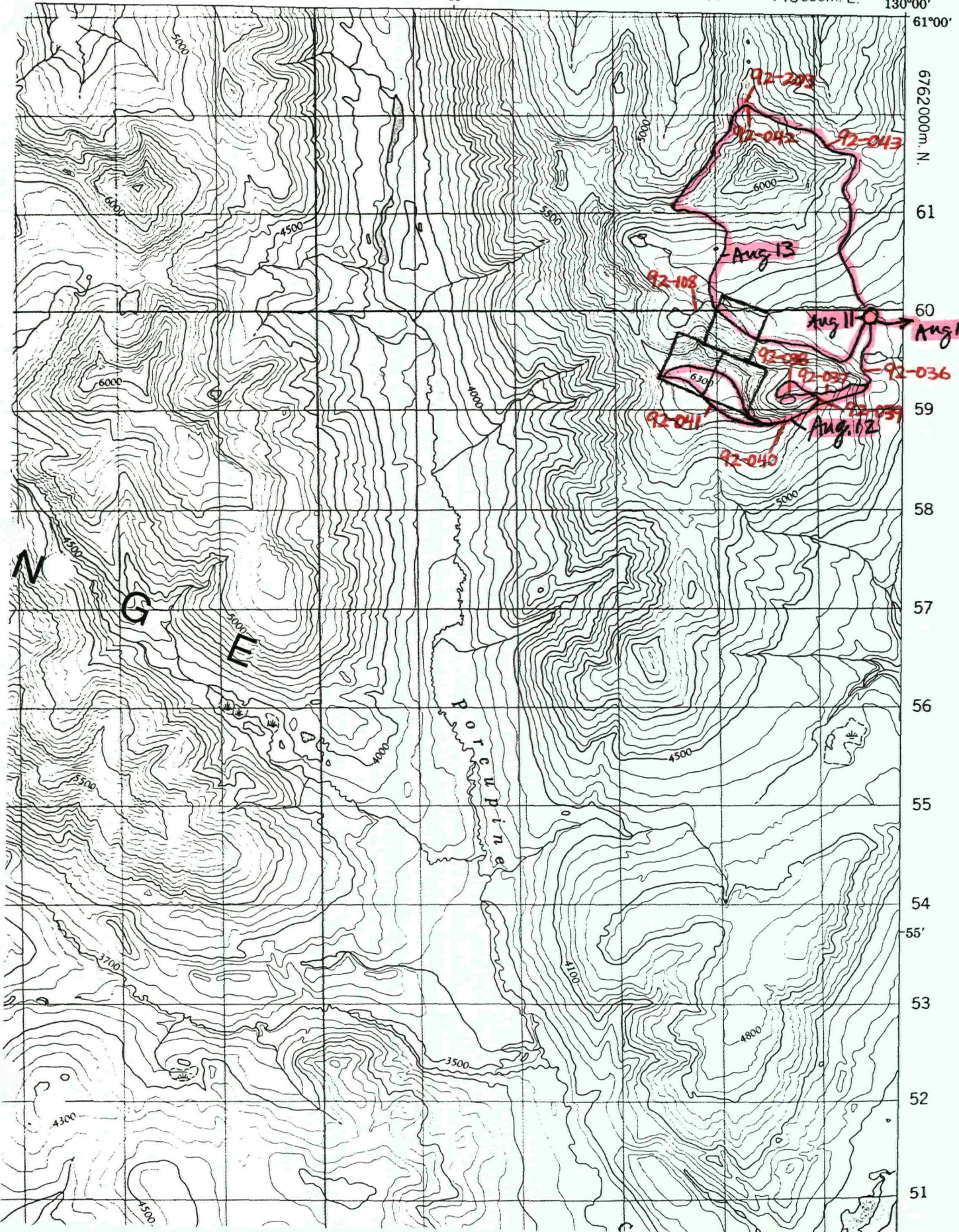
42

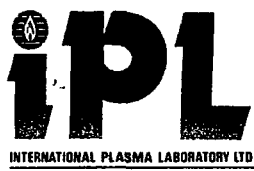
43

44

445 000m. E.

130°00'





2036 Columbia Street
 Vancouver, B C
 Canada V5Y 3E1
 Phone (604) 879-7878
 Fax (604) 879-7898

iPL Report: 9200623 1 Northern Analytical Laboratories
 Project: W/O 13678

In: Aug 12, 1992
 Out: Aug 17, 1992

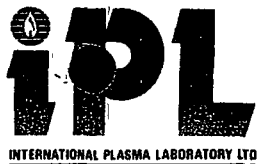
21 Pulp

Page 1 of 1 Section 1 of 2
 Certified BC Assayer

[Signature]
 David Chiu

Sample Name	Au ppb	Pt ppb	Pd ppb	Ag ppm	Cu ppm	Pb ppm	Zn ppm	As ppm	Sb ppm	Hg ppm	Mo ppm	Tl ppm	Bi ppm	Cd ppm	Co ppm	Ni ppm	Ba ppm	W ppm	Cr ppm	V ppm	Mn ppm	La ppm	Sr ppm	Zr ppm	Sc ppm	Ti %	Al %	Ca %	Fe %	Mg %
92-001	P <	<	<	<	10	<	14	<	14	<	11	<	<	0.1	21	253	17	<	757	35	221	<	1	1	1	<	0.14	0.05	2.07	0.43
92-002	P 10	<	<	<	7	<	11	<	9	<	5	<	<	0.3	11	140	52	<	384	18	1981	<	162	<	1	<	0.14	3.20	1.08	0.21
92-003	P 1780	<	<	2.6	8353	12	22	<	7	7	5	<	3	1.8	2	3	458	<	28	3	2958	<	169	<	1	<	0.22	15.81	0.32	9.18
92-004	P 16	<	<	<	75	11	33	<	7	8	5	<	<	3.1	5	11	39	<	24	<	2451	2	189	1	2	<	0.50	17.31	0.37	1.1%
92-005	P 21	<	<	<	162	<	61	<	6	<	3	<	<	<	20	16	15	<	46	124	773	<	9	2	6	0.30	2.43	0.95	6.05	2.21
92-006	P 3	<	<	<	37	<	7	6	7	<	9	<	<	0.3	2	9	9	<	277	5	80	<	2	1	<	0.01	0.05	0.16	0.64	0.09
92-007	P 8	<	<	<	28	<	20	8	<	<	6	<	<	0.2	7	31	363	<	113	22	156	<	4	1	<	0.01	0.11	0.14	7.18	0.06
92-008	P 7	<	<	<	37	<	15	8	7	<	6	<	<	0.2	13	43	45	<	172	57	353	<	2	1	1	0.01	0.21	0.22	5.92	0.24
92-009	P 9	<	<	<	15	<	12	<	<	3	5	<	<	<	5	23	140	<	146	43	152	<	2	<	<	<	0.07	0.07	5.54	0.05
92-010	P <	<	<	<	15	<	9	5	6	<	8	<	<	<	3	17	12	<	220	67	120	<	1	1	<	<	0.05	0.06	6.80	0.03
92-011	P <	<	<	<	11	2	40	<	9	<	4	<	<	1.0	76	0.2%	11	<	405	11	525	<	2	1	6	<	0.27	0.02	4.39	20%
92-012	P 5	<	<	0.3	565	149	899	109	30	<	10	<	<	3.5	12	213	29	<	204	114	113	<	2	2	3	0.04	0.38	0.03	8.26	0.30
92-013	P <	<	<	<	10	6	38	<	21	5	4	<	<	1.0	94	0.2%	47	<	1044	14	564	<	4	<	6	<	0.30	0.08	4.09	21%
92-014	P <	<	<	0.1	33	<	22	9	<	<	4	<	<	0.2	10	34	88	<	105	12	1498	3	16	2	<	<	0.35	0.02	0.83	0.48
92-015	P <	<	<	<	55	4	46	<	5	<	5	<	<	0.2	18	45	127	<	122	14	5935	5	61	3	1	<	0.93	0.03	1.89	0.07
92-100	P 7	<	<	0.4	265	6	143	13	7	<	3	<	<	<	37	88	172	<	113	93	1338	14	45	1	4	0.05	3.59	0.72	5.19	1.05
92-101	P <	<	<	<	111	4	119	13	19	3	3	<	<	1.3	62	0.1%	72	<	834	40	451	9	26	1	5	0.04	1.66	0.79	3.32	8.92
92-102	P <	<	<	0.1	45	<	50	<	25	<	4	<	<	0.4	52	571	141	<	996	58	683	3	28	2	4	0.12	1.43	0.41	7.65	6.18
92-103	P <	<	<	0.2	93	7	85	6	11	<	2	<	<	0.2	49	346	797	<	423	56	895	9	40	2	4	0.14	1.84	0.56	6.54	3.31
92-104	P <	<	<	<	48	3	125	7	8	<	2	<	<	<	32	82	203	<	100	83	1060	10	22	4	4	0.28	2.29	0.66	4.62	2.28
92-105	P 138	<	<	<	42	6	137	<	26	<	5	<	<	1.0	72	0.1%	46	<	1041	51	782	<	6	1	7	0.03	1.13	0.35	5.96	15%

Min Limit 2 15 5 0.1 1 2 1 5 5 3 1 10 2 0.1 1 1 2 5 1 2 1 2 1 1 1 0.01 0.01 0.01 0.01 0.01
 Max Reported* 9999 10000 10000 99.9 20000 20000 20000 9999 9999 9999 9999 9999 9999 99.9 999 999 9999 999 9999 999 9999 9999 9999 9999 9999 9999 99 1.00 99.99 99.99 99.99 9.99
 Method FAAA FA/AAS FA/AAS ICP
 ---No Test if insufficient Sample S=Soil R=Rock C=Core L=Silt P=Pulp U=Undefined =Estimate/1000 %=Estimate % Max=No Estimate
 International Plasma Lab Ltd. 2036 Columbia St. Vancouver BC V5Y 3E1 Ph:604/879- Fax:604/879-7898



2036 Columbia Street
 Vancouver, BC
 Canada V5Y 3E1
 Phone (604) 879-7878
 Fax (604) 879-7898

iPL Report: 9200623-T Northern Analytical Laboratories
 Project: W/O 13678

In: Aug 12, 1992
 Out: Aug 17, 1992

21 Pulp

Page 1 of 1

Section 2 of 2
 Certified BC Assayer

David Chiu

Sample Name	K %	Na %	P %
92-001	0.01	0.02	0.01
92-002	0.01	0.02	0.01
92-003	<	0.02	0.02
92-004	<	0.01	0.02
92-005	0.05	0.13	0.11
92-006	0.01	0.02	<
92-007	0.03	0.02	0.05
92-008	0.02	0.02	0.03
92-009	0.02	0.02	0.02
92-010	0.01	0.02	0.02
92-011	<	0.01	<
92-012	0.05	0.01	0.08
92-013	<	0.01	<
92-014	0.09	0.02	0.01
92-015	0.12	0.02	0.01
92-100	0.11	0.03	0.15
92-101	0.04	0.03	0.09
92-102	0.03	0.02	0.03
92-103	0.08	0.02	0.06
92-104	0.06	0.02	0.08
92-105	0.01	0.02	0.03

Min Limit 0.01 0.01 0.01
 Max Reported* 9.99 5.00 5.00
 Method ICP ICP ICP

---No Test ins=Insufficient Sample S=Soil R=Rock C=Core L=Silt P=Pulp U=Undefined m=Estimate/1000 %=Estimate % Max=No Estimate
 International Plasma Lab Ltd. 2036 Columbia St. Vancouver BC V5Y 3E1 Ph:604/879-7878 Fax:604/879-7898



REPORT: V92-01300.0 (COMPLETE)

REFERENCE:

CLIENT: MR. VAN KRICHBAUM

SUBMITTED BY: V. KRICHBAUM

PROJECT: NONE GIVEN

DATE PRINTED: 10-NOV-92

ELEMENT	NUMBER OF ANALYSES	LOWER DETECTION	EXTRACTION	METHOD	ELEMENT	NUMBER OF ANALYSES	LOWER DETECTION	EXTRACTION	METHOD
1 Au	33	5 PPB	FIRE ASSAY	FIRE ASSAY-AA	37 CaO	3	0.01 PCT	BORATE FUSION	INDUC. COUP. PLASMA
2 Ag	33	0.2 PPM	HCL:HNO3 (3:1)	INDUC. COUP. PLASMA	38 Na2O	3	0.01 PCT	BORATE FUSION	INDUC. COUP. PLASMA
3 Cu	33	1 PPM	HCL:HNO3 (3:1)	INDUC. COUP. PLASMA	39 K2O	3	0.05 PCT	BORATE FUSION	INDUC. COUP. PLASMA
4 Pb	33	2 PPM	HCL:HNO3 (3:1)	INDUC. COUP. PLASMA	40 LOI	3	0.05 PCT		GRAVIMETRIC
5 Zn	33	1 PPM	HCL:HNO3 (3:1)	INDUC. COUP. PLASMA	41 Cr2O3	3	0.01 PCT	BORATE FUSION	INDUC. COUP. PLASMA
6 Mo	33	1 PPM	HCL:HNO3 (3:1)	INDUC. COUP. PLASMA	42 P2O5	3	0.03 PCT	BORATE FUSION	INDUC. COUP. PLASMA
7 Ni	33	1 PPM	HCL:HNO3 (3:1)	INDUC. COUP. PLASMA	43 Total	3	0.01 PCT		
8 Co	33	1 PPM	HCL:HNO3 (3:1)	INDUC. COUP. PLASMA	44 S Tot	3	0.02 PCT		LECO
9 Cd	33	1.0 PPM	HCL:HNO3 (3:1)	INDUC. COUP. PLASMA	45 AU	25	1 PPB	FIRE ASSAY	FIRE ASSAY-DCP
10 Bi	33	5 PPM	HCL:HNO3 (3:1)	INDUC. COUP. PLASMA	46 PT	25	5 PPB	FIRE ASSAY	FIRE ASSAY-DCP
11 As	33	5 PPM	HCL:HNO3 (3:1)	INDUC. COUP. PLASMA	47 PD	25	1 PPB	FIRE ASSAY	FIRE ASSAY-DCP
12 Sb	33	5 PPM	HCL:HNO3 (3:1)	INDUC. COUP. PLASMA	48 Cu	25	1 PPM	HCL:HNO3 (3:1)	ATOMIC ABSORPTION
13 Hg	33	0.010 PPM	HCL:HNO3 (3:1)	COLD VAPOR AA	49 Ni	25	2 PPM	HCL:HNO3 (3:1)	ATOMIC ABSORPTION
14 Fe	33	0.01 PCT	HCL:HNO3 (3:1)	INDUC. COUP. PLASMA					
15 Mn	33	1 PPM	HCL:HNO3 (3:1)	INDUC. COUP. PLASMA					
16 Te	33	10 PPM	HCL:HNO3 (3:1)	INDUC. COUP. PLASMA					
17 Ba	33	2 PPM	HCL:HNO3 (3:1)	INDUC. COUP. PLASMA					
18 Cr	33	1 PPM	HCL:HNO3 (3:1)	INDUC. COUP. PLASMA					
19 V	33	1 PPM	HCL:HNO3 (3:1)	INDUC. COUP. PLASMA					
20 Sn	33	20 PPM	HCL:HNO3 (3:1)	INDUC. COUP. PLASMA					
21 W	33	20 PPM	HCL:HNO3 (3:1)	INDUC. COUP. PLASMA					
22 La	33	1 PPM	HCL:HNO3 (3:1)	INDUC. COUP. PLASMA					
23 Al	33	0.01 PCT	HCL:HNO3 (3:1)	INDUC. COUP. PLASMA					
24 Mg	33	0.01 PCT	HCL:HNO3 (3:1)	INDUC. COUP. PLASMA					
25 Ca	33	0.01 PCT	HCL:HNO3 (3:1)	INDUC. COUP. PLASMA					
26 Na	33	0.01 PCT	HCL:HNO3 (3:1)	INDUC. COUP. PLASMA					
27 K	33	0.01 PCT	HCL:HNO3 (3:1)	INDUC. COUP. PLASMA					
28 Sr	33	1 PPM	HCL:HNO3 (3:1)	INDUC. COUP. PLASMA					
29 Y	33	1 PPM	HCL:HNO3 (3:1)	INDUC. COUP. PLASMA					
30 SiO2	3	0.01 PCT	BORATE FUSION	INDUC. COUP. PLASMA					
31 TiO2	3	0.01 PCT	BORATE FUSION	INDUC. COUP. PLASMA					
32 Al2O3	3	0.01 PCT	BORATE FUSION	INDUC. COUP. PLASMA					
33 Fe2O3	3	0.01 PCT	BORATE FUSION	INDUC. COUP. PLASMA					
34 MnO	3	0.01 PCT	BORATE FUSION	INDUC. COUP. PLASMA					
35 MgO	3	0.01 PCT	BORATE FUSION	INDUC. COUP. PLASMA					
36 BaO	3	0.001 PCT	BORATE FUSION	INDUC. COUP. PLASMA					

SAMPLE TYPES	NUMBER	SIZE FRACTIONS	NUMBER	SAMPLE PREPARATIONS	NUMBER
S SOIL	3	1 -80	6	CRUSH/SPLIT <10 LB	29
T STREAM SED, SILT	3	2 -150	30	PULVERIZATION	29
R ROCK	29			PULVERIZATION	1
C CONCENTRATE	1			DRY, STEVE -80	6

REPORT COPIES TO: BOX 6752 MR. ROGER KRICHBAUM	INVOICE TO: BOX 6752
---	----------------------



Geochemical Lab Report

Inchcape Testing Services

DATE PRINTED: 9-NOV-92

PROJECT: NONE GIVEN

PAGE 1A

REPORT: V92-01300.0 (COMPLETE)

Table with columns: SAMPLE NUMBER, ELEMENT UNITS, and various chemical elements (Au, Ag, Cu, Pb, Zn, Mo, Ni, Co, Cd, Bi, As, Sb, Hg, Fe, Mn, Te, Ba, Cr, V, Sn, W, La, Al, Mg, Ca, Na, K, Sr, Y, SiO2, TiO2, Al2O3, Fe2O3, MnO, MgO, BaO) with corresponding concentration values.



Geochemical Lab Report

Inchcape Testing Services

DATE PRINTED: 9-NOV-92

PROJECT: NONE GIVEN

PAGE 1B

REPORT: V92-01300.0 (COMPLETE)

SAMPLE NUMBER	ELEMENT UNITS	CaO PCT	Na2O PCT	K2O PCT	LOI PCT	Cr2O3 PCT	P2O5 PCT	Total S PCT	Tot PCT	AU PPB	PT PPB	PD PPB	Cu PPM	Ni PPM
92-201														
92-202														
92-203														
92-106										8	39	20	33	501
92-107										20	123	205	17	1138
92-108										4	16	14	67	104
92-016														
92-017										11	45	2	484	27
92-018										3	11	5	22	41
92-019										8	14	31	49	1570
92-020										4	11	5	46	30
92-021										9	38	33	8	194
92-022										2	14	1	26	1343
92-023										12	27	34	15	1869
92-024		37.11	0.03	<.05	3.46	0.03	0.05	99.79	<0.02					
92-025										2	14	1	10	2321
92-026										4	14	4	25	156
92-027										3	16	1	11	4711
92-028										7	18	6	10	1805
92-029										9	11	3	423	148
92-030										2	6	3	18	694
92-031										2	15	5	22	2438
92-032										1	14	2	11	1479
92-033										3	15	8	13	1802
92-034														
92-035														
92-036										2	20	18	6	1879
92-037										2	41	24	48	334
92-038										13	16	4	174	2626
92-039										2	14	1	33	154

REPORT: V92-01300.0 (COMPLETE)

DATE PRINTED: 9-NOV-92

PROJECT: NONE GIVEN

PAGE 2A

SAMPLE NUMBER	ELEMENT	AU	Ag	Cu	Pb	Zn	Mo	Ni	Co	Cd	Bi	As	Sb	Hg	Fe	Mn	Te	Ba	Cr	V	Sn	W	La	Al	Mg	Ca	Na	K	Sr	Y	SiO2	TiO2	Al2O3	Fe2O3	MnO	MgO	BaO	
	UNITS	PPB	PPM	PPM	PPM	PPM	PPM	PPM	PPM	PPM	PPM	PPM	PPM	PPM	PCT	PPM	PPM	PPM	PPM	PPM	PPM	PPM	PPM	PCT	PCT	PCT	PCT	PCT	PPM	PPM	PCT	PCT	PCT	PCT	PCT	PCT	PCT	PCT
92-040		<5	<.2	9	<2	65	<1	172	42	<1	6	9	<5	<.010	5.77	538	<10	88	306	627	<20	<20	<1	4.90	3.30	2.47	0.09	0.08	117	<1								
92-041		<5	0.2	53	59	167	28	54	10	<1	<5	14	6	<.010	3.66	870	<10	81	287	55	<20	<20	8	3.73	0.25	3.81	0.14	0.04	129	6								
92-042		69	<.2	17	3	22	<1	821	50	<1	10	74	<5	<.010	3.62	1076	<10	26	365	50	<20	<20	<1	0.40	8.11	3.55	0.02	0.02	77	<1								
92-043																														37.20	0.03	16.04	3.85	0.11	8.43	0.002		
92-044																														27.67	0.05	1.29	0.95	0.29	14.92	0.029		
92-109		528	<.2	19	10	78	1	1246	69	<1	15	<5	8	<.010	9.50	592	<10	60	4469	123	<20	<20	3	0.95	3.39	0.41	0.04	0.04	10	2								



Geochemical Lab Report

Inchcape
Testing
Services

DATE PRINTED: 9-NOV-92

PROJECT: NONE GIVEN

PAGE 28

REPORT: V92-01300.0 (COMPLETE)

SAMPLE NUMBER	ELEMENT UNITS	CaO PCT	Na2O PCT	K2O PCT	LOI PCT	Cr2O3 PCT	P2O5 PCT	Total S PCT	S Tot PCT	AU PPB	PT PPB	PD PPB	Cu PPM	Ni PPM
92-040										2	15	1	12	197
92-041														
92-042														
92-043		29.15	0.02	<.05	4.40	0.05	<.03	99.28	0.04					
92-044		22.89	0.30	<.05	31.98	0.06	0.05	100.5	<0.02					
92-109										99	12	2	27	1312

REPORT: V92-01300.0 (COMPLETE)

STANDARD NAME	ELEMENT UNITS	CaO PCT	Na2O PCT	K2O PCT	LOI PCT	Cr2O3 PCT	P2O5 PCT	Total PCT	S Tot PCT	AU PPB	PT PPB	PD PPB	Cu PPM	Ni PPM
LOW AU STANDARD		-	*	-	*	-	*	-	*	-	*	-	*	-
Number of Analyses		-	-	-	-	-	-	-	-	-	-	-	-	-
Mean Value		-	*	-	*	-	*	-	*	-	*	-	*	-
Standard Deviation		-	-	-	-	-	-	-	-	-	-	-	-	-
Accepted Value		-	*	-	*	-	*	-	*	17	*	-	*	-
LOW PT,PD,AUSTD		-	*	-	*	-	*	-	-	57	67	62	*	-
Number of Analyses		-	-	-	-	-	-	-	-	1	1	1	*	-
Mean Value		-	*	-	*	-	*	-	*	57	67	62	*	-
Standard Deviation		-	-	-	-	-	-	-	-	-	-	-	-	-
Accepted Value		-	*	-	*	-	*	-	-	67	67	67	*	-
TRACE GEOCHEM STD		-	*	-	*	-	*	-	*	-	*	-	293	43
Number of Analyses		-	-	-	-	-	-	-	-	-	-	-	1	1
Mean Value		-	-	-	*	-	*	-	*	-	*	-	293	43
Standard Deviation		-	-	-	-	-	-	-	-	-	-	-	-	-
Accepted Value		-	*	-	*	-	*	-	-	-	*	-	290	42
ANALYTICAL BLANK		<0.01	<.01	<.05	*	<0.01	<.03	-	*	1	<5	2	<1	<2
Number of Analyses		1	1	1	-	1	1	-	-	1	1	1	1	1
Mean Value		0.005	.005	0.03	*	0.005	0.02	-	*	1	3	2	0.5	1
Standard Deviation		-	-	-	-	-	-	-	-	-	-	-	-	-
Accepted Value		<.001	<.01	<.01	<.001	<.001	<.01	<.001	<.001	1	5	1	1	1
CZECH STANDARD		-	*	-	*	-	*	-	0.07	-	*	-	*	-
Number of Analyses		-	-	-	-	-	-	-	1	-	-	-	-	-
Mean Value		-	*	-	*	-	*	-	0.07	-	*	-	*	-
Standard Deviation		-	-	-	-	-	-	-	-	-	-	-	-	-
Accepted Value		-	*	-	*	-	*	-	*	-	*	-	*	-
CANMET CERTIFIED STD		8.17	4.15	4.59	*	<0.01	0.43	98.90	*	-	*	-	*	-
Number of Analyses		1	1	1	-	1	1	1	-	-	-	-	-	-
Mean Value		8.17	4.15	4.59	*	0.005	0.43	98.90	*	-	*	-	*	-
Standard Deviation		-	-	-	-	-	-	-	-	-	-	-	-	-
Accepted Value		7.98	4.34	4.48	1.11	-	0.43	-	*	-	*	-	*	-



Geochemical Lab Report

Inchcape
Testing
Services

REPORT: V92-01300.0 (COMPLETE)

DATE PRINTED: 9-NOV-92

PROJECT: NONE GIVEN

PAGE 48

STANDARD NAME	ELEMENT UNITS	CaO PCT	Na2O PCT	K2O PCT	LOI PCT	Cr2O3 PCT	P2O5 PCT	Total S PCT	Tot PCT	AU PPB	PT PPB	PD PPB	Cu PPM	Ni PPM
BCC LOW LOI STD 1986		-	*	-	3.20	-	*	-	*	-	*	-	*	-
Number of Analyses		-	-	-	1	-	-	-	-	-	-	-	-	-
Mean Value		-	*	-	3.20	-	*	-	*	-	*	-	*	-
Standard Deviation		-	-	-	-	-	-	-	-	-	-	-	-	-
Accepted Value		-	*	-	3.08	-	*	-	*	-	*	-	*	-
BCC Rock Std 1989		-	*	-	4.95	-	*	-	*	-	*	-	*	-
Number of Analyses		-	*	-	1	-	-	-	-	-	-	-	-	-
Mean Value		-	*	-	4.95	-	*	-	*	-	*	-	*	-
Standard Deviation		-	-	-	-	-	-	-	-	-	-	-	-	-
Accepted Value		5.90	1.30	2.10	5.00	-	0.19	-	*	-	*	-	*	-



Geochemical Lab Report

Inchcape
Testing
Services

REPORT: V92-01300.0 (COMPLETE)

DATE PRINTED: 9-NOV-92
PROJECT: NONE GIVEN PAGE 5A

SAMPLE NUMBER	ELEMENT UNITS	AU	Ag	Cu	Pb	Zn	Mn	Ni	Co	Cd	Bi	As	Sb	Hg	Fe	Mn	Te	Ba	Cr	V	Sn	W	La	Al	Mg	Ca	Na	K	Sr	Y	SiO2	TiO2	Al2O3	Fe2O3	MnO	MgO	BaO	
		PPB	PPM	PPM	PPM	PPM	PPM	PPM	PPM	PPM	PPM	PPM	PPM	PPM	PCT	PPM	PPM	PPM	PPM	PPM	PPM	PPM	PPM	PCT	PCT	PCT	PCT	PCT	PPM	PPM	PCT	PCT	PCT	PCT	PCT	PCT	PCT	PCT
92-201		37	<.2	84	25	97	13	87	6	<1	6	90	<5	0.262	7.12	177	<10	126	74	191	<20	<20	19	1.40	0.38	0.05	0.02	0.41	87	4								
Duplicate		34	<.2	88	24	101	13	95	7	<1	5	88	<5		7.51	190	<10	139	80	198	<20	<20	20	1.46	0.41	0.05	0.02	0.43	91	4								
92-106		51	<.2	29	16	91	<1	491	40	<1	9	51	6	0.069	4.32	850	<10	174	444	57	<20	<20	13	1.27	5.84	0.46	0.02	0.27	17	5								
Duplicate																																						
92-024																																						
Duplicate																																						
92-029		8	<.2	396	<2	36	<1	145	21	<1	8	10	<5	<.010	2.92	315	<10	60	113	75	<20	<20	<1	2.95	2.06	2.51	0.04	0.02	124	6								
Duplicate			<.2	393	<2	35	1	144	21	<1	7	9	<5	<.010	2.96	316	<10	60	112	76	<20	<20	<1	2.91	2.06	2.52	0.04	0.02	123	6								
92-033		<5	<.2	9	6	34	<1	1632	82	<1	14	15	<5	<.010	4.17	428	<10	12	1324	18	<20	<20	<1	0.10	>10.0	0.03	<.01	<.01	<1	<1								
Duplicate																																						
92-040		<5	<.2	9	<2	65	<1	172	42	<1	6	9	<5	<.010	5.77	538	<10	88	306	627	<20	<20	<1	4.90	3.30	2.47	0.09	0.08	117	<1								
Duplicate																																						



Geochemical Lab Report

Inchcape
Testing
Services

REPORT: V92-01300.0 (COMPLETE)

DATE PRINTED: 9-NOV-92

PROJECT: NONE GIVEN

PAGE 5B

SAMPLE NUMBER	ELEMENT UNITS	CaO PCT	Na2O PCT	K2O PCT	LOI PCT	Cr2O3 PCT	P2O5 PCT	Total S Tot PCT	AU PCT	PT PPB	PD PPB	Cu PPM	Ni PPM
92-201	Duplicate												
92-106	Duplicate								8	39	20	33	501
												32	498
92-024	Duplicate	37.11	0.03	<.05	3.46	0.03	0.05	99.79	<0.02				
		36.81	0.03	<.05	3.49	0.03	0.05						
92-029	Duplicate								9	11	3	423	148
92-033	Duplicate								3	15	8	13	1802
												13	1666
92-040	Duplicate								2	15	1	12	197
									3	12	2		

Analysis of Results

Nephrite was the main mineral prospected for in this project. It was found in all four main areas prospected not including the helicopter reconnaissance. Only one large deposit was found but the quality is poor. Two claims were made for this adjoining the Bill's claim in 105 B/16.

Small amounts of nephrite of good 'B' quality were found in all areas. However, they are not economic deposits due to the small quantities discovered.

Assays for the Wolverine Lake and 'Front Range' areas were done with the Platinum + 31 package by Northern Analytical Labs in Whitehorse, and subcontracted to International Plasma Laboratory in Vancouver. See the copies of assay results included, entitled 'IPL'.

Samples for the above were 6 stream sediments and 15 rock samples. Stream sediments were assays 92-100 to 92-105, and the rocks are assays 92-001 to 92-015.

Analysis of Results p. 2

Several types of mineral associations were indicated by the assays of IPL. These include gold-copper-silver-mercury-manganese, nickel-cobalt, copper-zinc-silver, copper-lead-zinc-silver-arsenic-antimony-vanadium, nickel-cobalt-chrome-antimony, nickel-cobalt-zinc, cobalt-antimony-chrome, zinc-vanadium, and gold-nickel-zinc-chrome. Results for platinum and palladium were disappointing, to say the least.

Assays for the Hasselburg Lake area and for the helicopter reconnaissance were done with Gold + 29 package and the Platinum + 4 package (for most samples) by Bondar-Clegg in Vancouver. Three samples received whole rock analysis. See the copies of assay results included, entitled 'Bondar-Clegg.'

Samples included 3 soil samples 92-201 to 92-203, 3 stream sediments 92-106 to 92-108, 1 pan concentrate 92-109, and 29 rock samples 92-017 to 92-044.

Analysis of Results p.3

Several types of mineral associations were indicated by the assays from Bondar-Clegg. These include gold-copper-vanadium, gold-arsenic-nickel-manganese, gold-silver-mercury, gold-nickel-chrome-vanadium, lanthanum-yttrium-strontium, nickel-chrome, chrome-nickel-copper-zinc-cobalt, gold-nickel-chrome, and vanadium-strontium.

The ultramafic areas prospected showed the expected mineralogy overall, and were enriched in nickel and copper in all areas, but not to a significant degree. No large deposits were found for these. Chromite was found widespread in some of the areas, but little platinum and palladium enrichment was found associated with them.

Further prospecting is indicated for the assay sites with high values for copper, nickel, and gold. More prospecting needs to be done for nephrite in the area around Bill's claim, especially to the south.

BELL AREA D

Campbell Hwy.

Tungsten Rd.

AREA C

AREA A

AREA B

1054 C

1055 B

1056 A

