

VEIP  
92-136  
1992

**GEOLOGICAL  
REPORT ON  
INLET CREEK / CULTUS CREEK**

**WHITEHORSE MINING DIVISION**

**LATITUDE : 61 08'**

**LONGITUDE : 138 13'**

**NTS: 115G**

by

**RICHARD GRAHAM  
P.GEOL.**

**HAINES JUNCTION, YUKON  
JULY 10 - AUGUST 10, 1992**

## SUMMARY

Inlet Creek and Cultus Creek are located within the Whitehorse Mining Division in southwestern Yukon. From July 10 to August 10, 1992, reconnaissance mapping and sampling were accomplished in order to determine the validity and possible source of the anomalous stream sediment samples in the area ( 1030 ppb Au on Inlet Creek and 133 ppb Au on Little Cultus Creek ).

Pan samples were taken at 500 metre centres along Inlet Creek and Little Cultus Creek in order to test for alluvial gold. A 2.5 kilometre segment along Inlet Creek returned high black sand content with minor gold particles (<10 mesh). Little Cultus Creek failed to return any gold in sampling. Reconnaissance north of Cultus Creek returned encouraging alluvial gold in pan sampling on John Creek.

Mapping has shown that the Southeast portion of the project area exposes the Ruby Range Batholith, to the north is a thick sequence of metamorphosed sediments which have been divided into a quartz-biotite schist and a quartz-sericite schist. Sulphide mineralization is restricted to a major cross-cutting lineament which represents Little Cultus Creek.

## RECOMMENDATION

2

The alluvial gold within Inlet Creek and Little Cultus Creek is uneconomic. Rock mineralization adjacent to the major lineament should be geochemically analyzed for gold and be followed-up if the results are encouraging.

The alluvial gold on John Creek should be tested with pits/trenches to further evaluate the potential of the encouraging pan samples.

## 1.0 INTRODUCTION

Reconnaissance mapping and sampling was accomplished within the Inlet Creek / Cultus Creek Area. Uniformly spaced pan samples were taken around the stream sample gold anomalies on Inlet Creek and Little Cultus Creek. Reconnaissance pan samples tested the majority of the creeks in the area for alluvial gold.

### 1.1 PROPERTY

The project area is located within the Whitehorse Mining Division of Southwestern Yukon. The reconnaissance covers approximately 15 square kilometres.

### 1.2 LOCATION AND ACCESS

The project area is located 65.5 kilometres from Haines Junction. The centre of the project area lies approximately 61 08' latitude and 138 13' longitude. The project area is accessible, locally, via a four wheel drive road which connects the area with the Silver City Road which connect the Alaska Highway. Most of the project area is only accessible by foot or helicopter.

### 1.3 OBJECTIVES

To map and prospect, on a reconnaissance scale, the Inlet Creek / Cultus Creek area in order to determine the source of the gold anomalies within stream sediment samples.

### 1.4 PROGRAMS

- A.) To take pan samples at 500 metre intervals around the stream samples anomalous in gold on Inlet Creek and Little Cultus Creek for possible economic alluvial gold.
- B.) Reconnaissance mapping and sampling of the project area at 1:50,000 scale.
- C.) Reconnaissance pan samples on creeks within the project area for possible anomalous alluvial gold.

The outcrop exposure within the project area is limited to topographic highs. The area is dominately covered by a thick sequence of ablation till. The till covers the low lying areas, as well as forming ridges up from the creek bottoms with relief of up to 100 metres. The till in the Inlet Creek area is uniform throughout with approximately 50% - 60% clay/silt, 20% - 30% fine sand and 10% to 30% clasts. The clasts consists of granodiorite, mafic - intermediate volcanics and minor siltstones. They range in size from pebbles to boulders over 2.0 metres. The till shows no orientation of clasts. The till in the Cultus Creek area is similar but local glacial outwash channels occur.

The southeast portion of the project area exposes the Ruby Range Batholith. The outcrops within this portion of the project area are massive granodiorite. To the north of the Ruby Range Batholith is a thick sequence of metamorphosed sediments which have been divided into two succession:

- 1.) Quartz-Biotite Schist
- 2.) Quartz-Sericite Schist

The quartz-biotite schist is a well sorted, medium to fined grained arenite which has undergone low grade metamorphism. The quartz-sericite schist is slightly finer grained, sericite rich and displays local bedding sequences.

Sulphide mineralization was only observed in one location. Trace to 1% Cpy > Po > Py are associated with a silicified arenite and mm scale cross cutting quartz viens. This location is adjacent to a major lineament which is represented by Little Cultus Creek. A sample has been taken and should be analyzed for gold.

Alluvial gold within the Inlet Creek area appears uneconomic. Samples taken up Inlet Creek shows a 2.5 kilometre segment of high black sand content with local gold traces (<10 mesh). Alluvial gold was also panned locally, from surficial material above the till. The gold is abraided and is less the 10 mesh in size. The size and quantity of the gold particles suggests that this is also uneconomic but the source may be local.

Reconnaissance pan sampling north of Cultus Creek has lead to anomalous gold particles on John Creek. This creek will be further evaluated in August.

## Second Report on Prospecting Map Area 115 G1

By A. Graham

- ① ✓ June 17 left Hains Junction took supplies to Main Camp on Inlet Creek. then moved tent to top of Buttes Creek.
- ② ✓ June 18 Moved rest of supplies to Buttes Creek started panning down creek on 500 M stations.
- ③ ✓ June 19 panning on upper Buttes Creek Black sand and Muscovite No gold.
- ④ ✓ June 20 panned on Buttes Creek No Visible gold.
- ⑤ ✓ June 21 Went hardrock prospecting west of upper tributary of Buttes Creek. lots of quartz stringers but No Mineralization.
- ⑥ ✓ June 22 prospected west of Buttes Creek found some pyrite in one structure (Maped it)
- ⑦ ✓ June 23 Went hardrock prospecting east of upper tributary of Buttes Creek lots of quartz up to 1 M in width (~~to~~) No Mineral.
- ⑧ ✓ June 24 prospecting same area as yesterday covered a large area but No Mineral.
- ⑨ ✓ June 25 Walked out for supplies and went to Hains Junction.
- ⑩ ✓ June 26 got supplies and back in camp by night fall long walk with load.

- (11) 27 June panned down to main flow of Cullis Creek 1 spot 4 grams of Black sand per Pan No. V.G.
- (12) 28 June prospect south east bank of Cullis Creek Very slow as Very steep lots of float but Nothing of interest
- (13) 29 June prospect south east side of Cullis Creek Very steep and slow going. Very hot and dry all small creeks now dry.
- (14) 30 June prospect south west side of Cullis Creek small lakes that had water 3 weeks ago now dry and can walk across
- (15) 1 July prospect south west side of Cullis Creek Very steep and hot. No Mineral but lots of quartz.
- (16) 2 July Decided to move out of this area and cross Cullis Creek. Means moving everything back to Mouth of Inlet Creek and then truck it around to Cullis.  
Made two trips to Mouth of Inlet and back to camp
- (17) 3 July last trip out went to Hains Junction for truck and supplies.
- (18) 4 July Moved to John Creek a tributary of Cullis Creek set up camp.

19) ✓ July 5

Panned up John Creek at 500M intervals  
good colours hope to finish tomorrow

20) ✓ July 6

Panned the rest of John Creek good  
colours will bring in small pieces float  
Next time in town

21) ✓ July 7 prospect east on Gull's Creek Very wet  
ground lots of marsh black sand no v.g.  
Quartz in bank but no Minerals.

22) ✓ July 8 prospect west on Gull's Creek from  
John Creek Black sand no v.g. wet ground.  
samples every 500M.

23) ✓ July 9 Richard Graham came into camp (surprise)  
brought food and traps and staying.  
Went over this prospect with him, sampled  
on John Creek.  
Will ~~take~~ take him tomorrow to Inlet and  
go over work already done.

24) ✓ July 10 Moved back to Inlet Creek and  
went over places samples and sites with  
Richard.

25) ✓ July 11 went over hard rock samples and  
took Richard to site of best samples

②6 July 12

Rained all day

②7 July 13

Rained all day no let-up

②8 July 14 Walked out as Rain all day

River coming up 6"

Went to Hains Junction (Road Bed)

✓ 28 days at 52.85 = 1,479.80

Hik hair and Flaying 52.14

Power saw Rental 125.00

986 KM at  $\frac{\$}{38.5}$  379.61

2,036.55

1  
✓ July 24

Went in to camp at Curtis and John Creek.

Prospect up John Creek

2  
✓ July 25

Prospect and pan up first creek East of John Creek

No Name Very steep and only 3 pan test

Not much black sand and No V.G.

3  
✓ July 26

Prospect second creek East of John Creek (No Name)

Very steep and Very little water No V.G. in pan.

Quartz - sericite - chlorite schist.

4  
✓ July 27 Prospect first creek west of John Creek (No Name)

black sand with very little gold in pan sample

lots of overburden at bottom end then into

Quartz - sericite schist

Quartz with no V.G.

5  
✓ July 28

went out on large recon west of camp found

fault structure lots of Quartz banding but no

V.G.

July 29 Did a recon of top end (North end) of John

6  
✓ creek Quartz - sericite - chlorite schist and

Quartz bands with No V.G.

✓ July 30

7 Reason East of John Creek high up hard climb  
found cross fault. one sample might be worth for them.  
other than that sample all Quartz & biotite.  
No K.G. in Quartz.

✓ July 31 Miserable day stayed in camp and moped.

8

✓ August 1-2.

9,10 Spent two days panning John Creek good colours in  
all pans with lots of Black sand.  
Will bring in doc and Plant to test in garage.  
Lots. Went to Saints Junction.

✓ August 4-5

11,12

went to 12 of July Creek to see what ground  
was like where people had worked places.  
panned sample and look very like John Creek  
gold small and mixed with black sand and garnet.  
as we went up stream the black sand got  
coarser and more critical.

✓ August 6-7

13,14

Measure out 5 sites on John Creek for  
1 cubic yard sampler used but trail in  
to them.

15 ✓ 13 August Moved a Goldfield Prospector (1 - 3 yds Per Hour)  
Plant with Tow-Hoe Backhoe to John Creek to  
test gravels at depth and in 1 cubic yard lots.

16 ✓ 14 August set up plant a road on John Creek and  
did 1 cubic yard test Then wheeled concentrate <sup>in gold</sup>  
wheel

(I) concentrate wet 6 K.G  
Black sand Dry 49.2 gr  
High Concentrate 5.4 gr (No Black sand)  
Value in gold \$1.73 at \$400.00 can.  
Remarks. Abraded. Res. in garnets.

17 ✓ 15 August move up stream 100 M set up plant  
and run 1 cubic yard test.

concentrate wet 5.3 K.G.  
dry sample over night

18 ✓ 16 August sample dry

(II) Black sand Dry 102.8 GR  
High concentrate 18.2 GR  
Remarks. High garnets Abraded

(II) Value in gold \$2.23

Moved up stream 100 M built small dam for water.

19 ✓ 17 August ran 1 cubic yard test

(III) concentrate wet 6 K.G.

Put to dry and moved up stream 100 M.

<sup>20</sup> August 18

(III) Black sand Dry 131.4 GR.

High concentrate 21.6 GR.

Gold value \$3.46

Remarks Abraided High garnets

in afternoon dug hole #IX and put it through plant while washing rocks Quartz with V.C. were in box

IX Coars wet 6.5 KG

put up to dry

<sup>21</sup> August 19

Black sand dry 169.4 GR

High concentrate 34.8 GR

Value in gold \$4.26

Remarks. gold visible in Quartz pebbles with garnets. Abraided.

with better results moved up stream 100 M.

<sup>22</sup> August 20

Put in dam and set up plant in morning started to put 1 cubic yard through plant after dinner

V concentrate wet 3.4 KG

big drop of of coars

Put to dry over night.

August 21

23 V Black sand (dry) 61.2 GR

High concentrate 14.1 GR

Remarks Abraded garnets.

Gold value .71¢

will not do any more tests as gold values  
tallen off

will prospect Pups to each side of sample  
#IV as no V.G. in QTR in V and was in IV.

August 22

24 Move plant down stream to camp in morning

Prospect Pup to west of sample IV in afternoon

Very little bedrock showing in lower end and in upper  
Quartz-Biotite schist with garnets in places. None of  
the Quartz carrying V.G.

August 23

25 Prospect to East of sample IV No bedrock showing  
on lower end. Where bedrock Quartz-Biotite schist.

No V.G.

August 24

26 Take down camp and load up and Return to  
Haines Junction.

Airfield  
Condition Unknown

**LEGEND**

- - - Traverse Line
- △ Exploration Camp
- Pan Sample
- Pan Sample High Black Sand
- Stream Sample Anomaly
- Rock mineralization
- ⌘ Cabin

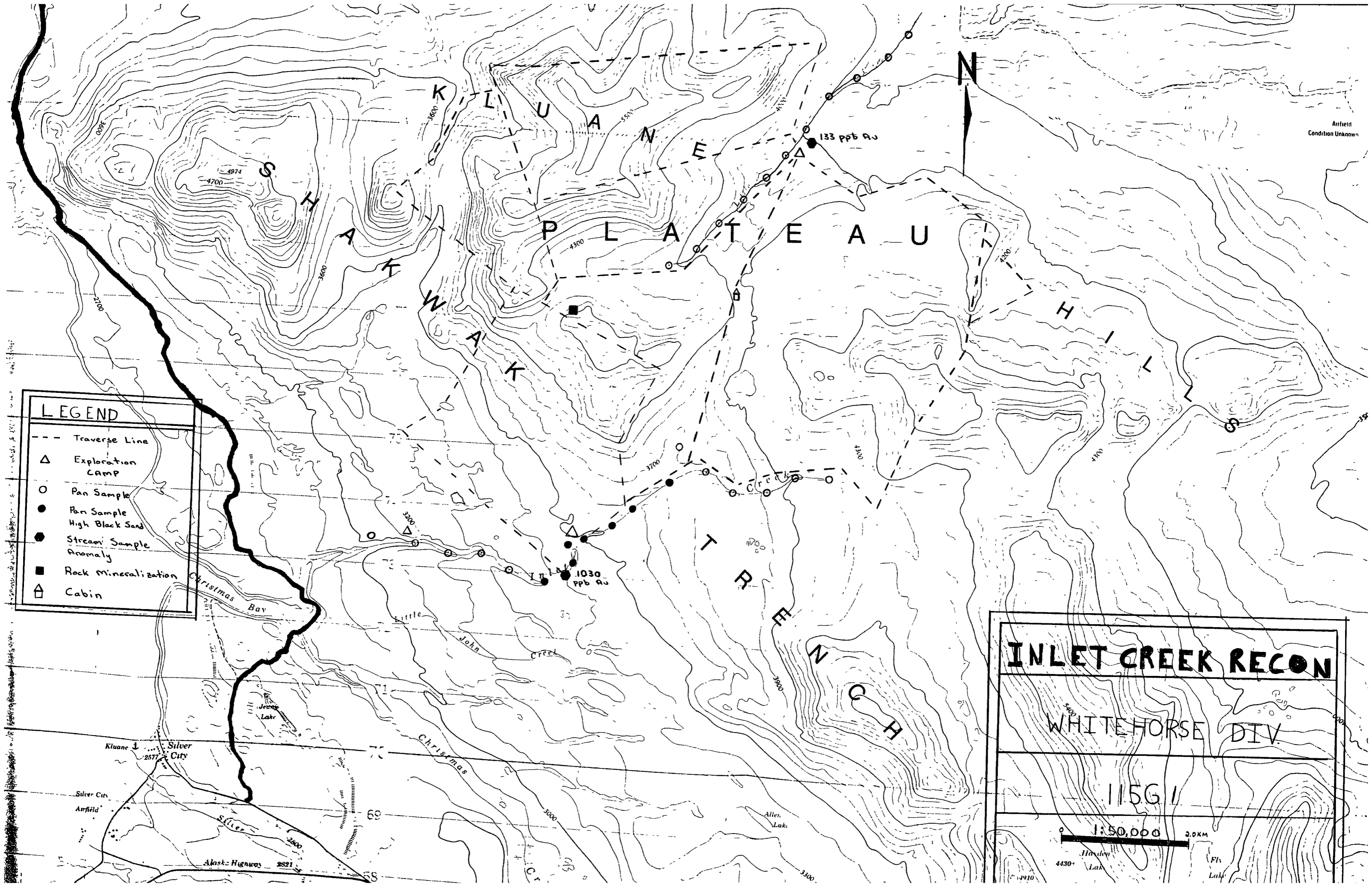
**INLET CREEK RECON**

WHITEHORSE DIV.

115G1

1:50,000 3.0KM

4430' Fly Lake

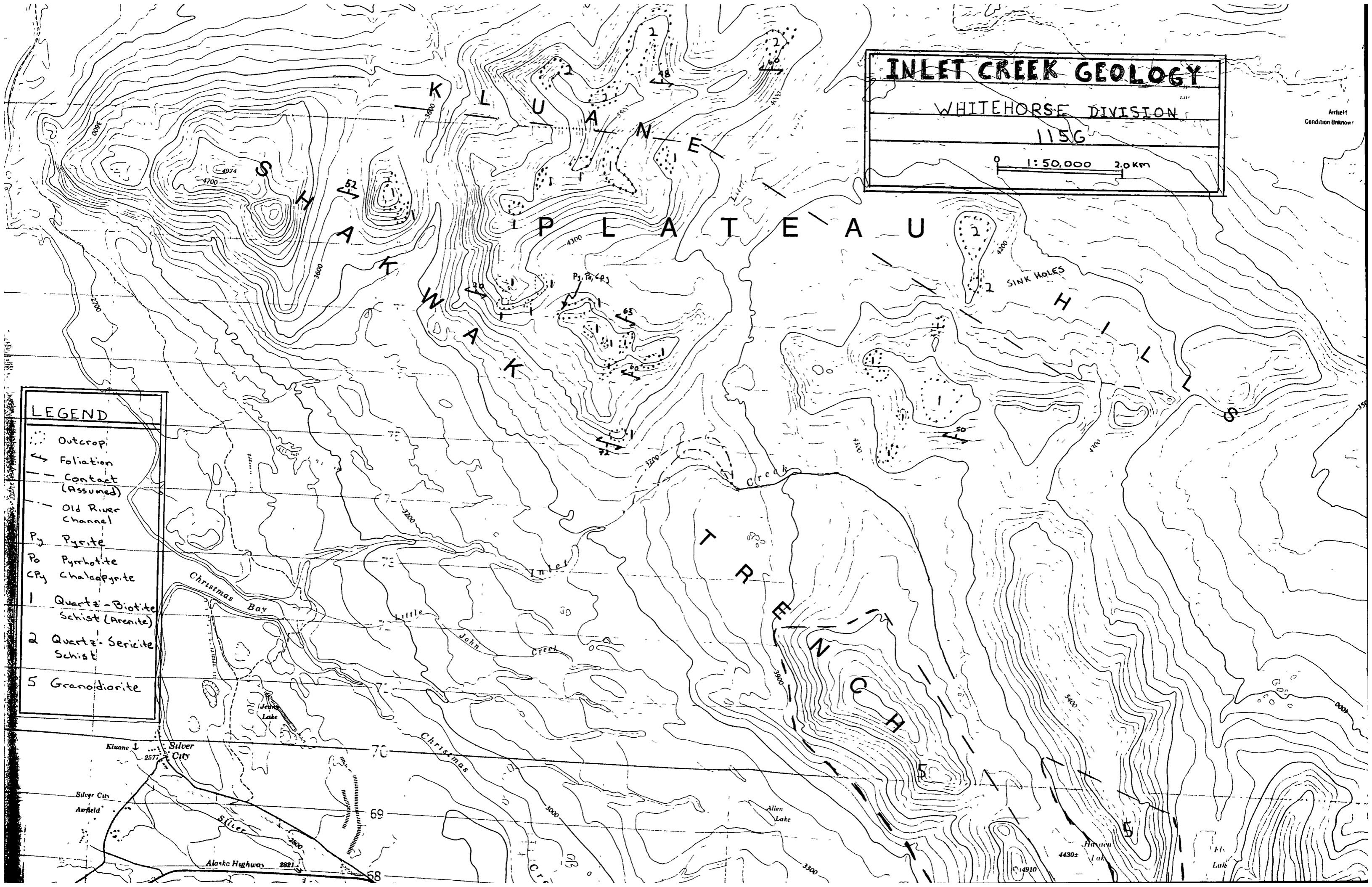


**INLET CREEK GEOLOGY**  
 WHITEHORSE DIVISION  
 115G  
 1:50,000 2.0km

Airfield  
 Condition Unknown

**LEGEND**

- Outcrop
- ↖ Foliation
- - - Contact (Assumed)
- - - Old River Channel
- Py Pyrite
- Po Pyrrhotite
- CPy Chalcopyrite
- 1 Quartz-Biotite Schist (Arenite)
- 2 Quartz-Sericite Schist
- 5 Granodiorite

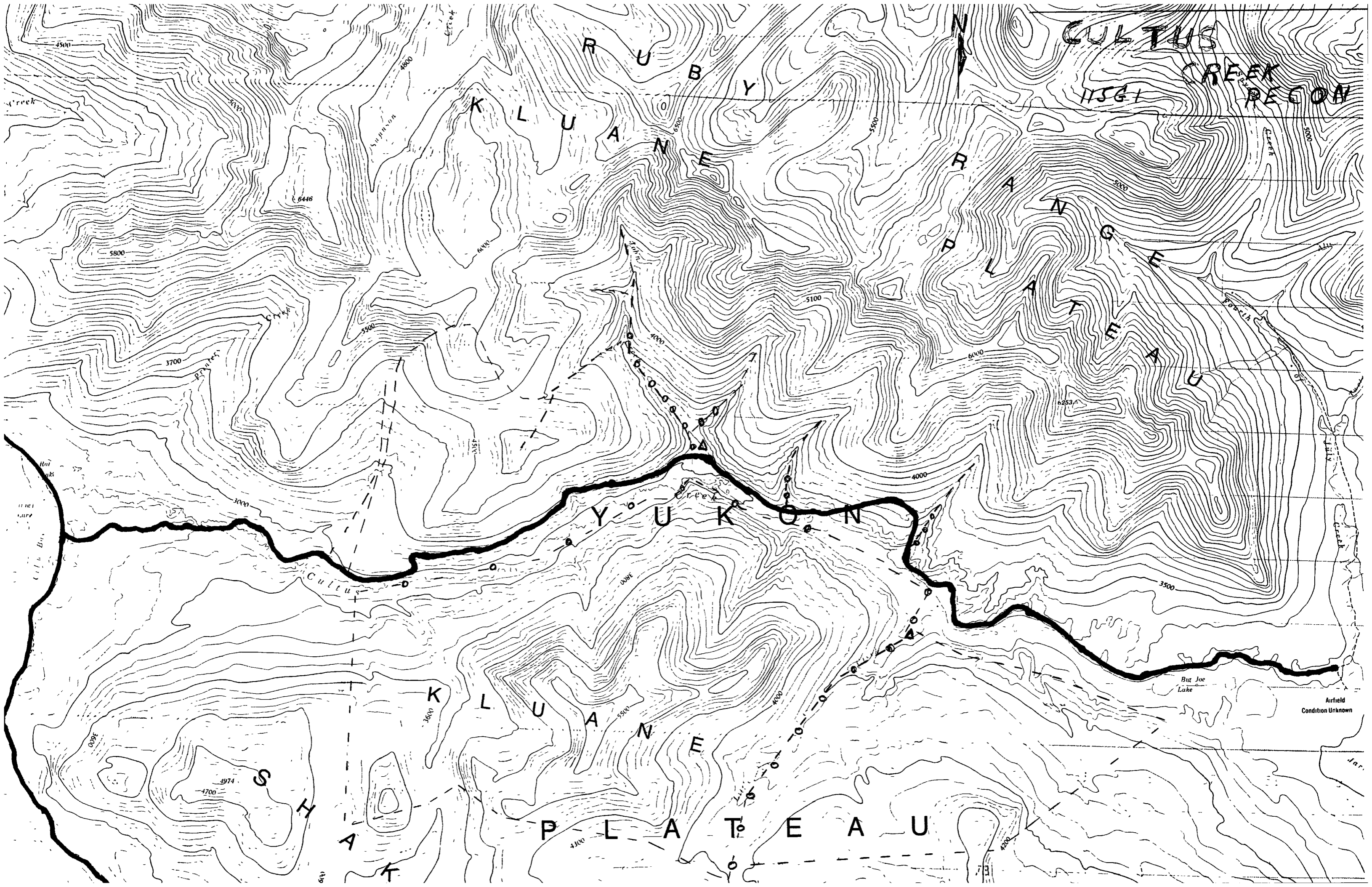


Kluane  
 Silver City  
 Silver City  
 Anfield  
 Alaska Highway 2821

Allen Lake

Harlow Lake

John Lake



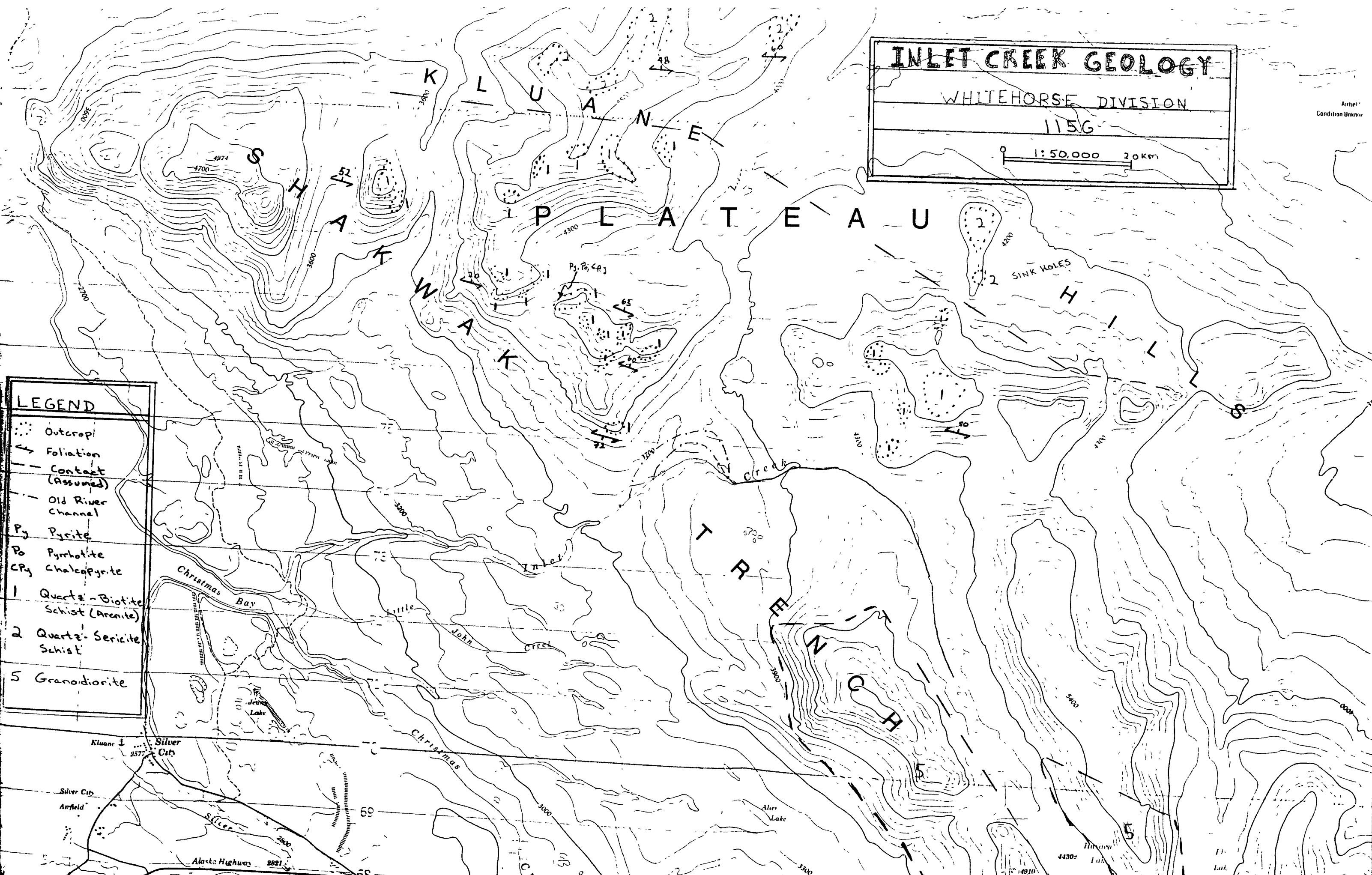


**INLET CREEK GEOLOGY**  
 WHITEHORSE DIVISION  
 115G

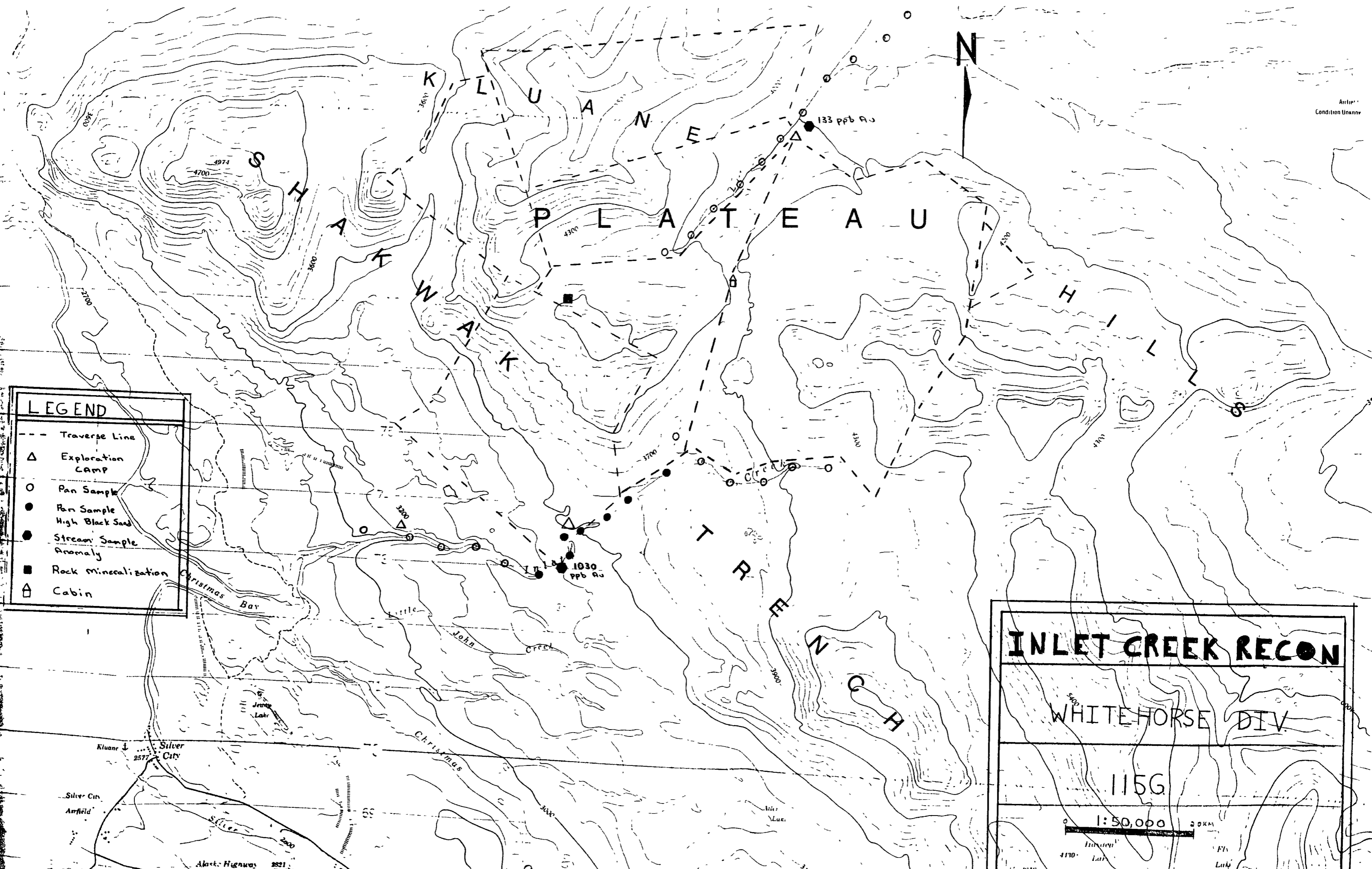
1:50,000 2.0 km

Airphoto  
 Condition Unknown

- LEGEND**
- Outcrop
  - ↖ Foliation
  - - - Contact (Assumed)
  - - - Old River Channel
  - Py Pyrite
  - Po Pyrrhotite
  - CPy Chalcopyrite
  - 1 Quartz-Biotite Schist (Arenite)
  - 2 Quartz-Sericite Schist
  - 5 Granodiorite



Artip  
Condition Unknown



**LEGEND**

- Traverse Line
- △ Exploration Camp
- Pan Sample
- Pan Sample High Black Sand
- Stream Sample Anomaly
- Rock mineralization
- ⌘ Cabin

**INLET CREEK RECON**

WHITEHORSE DIV

115G

1:50,000

0 20KM

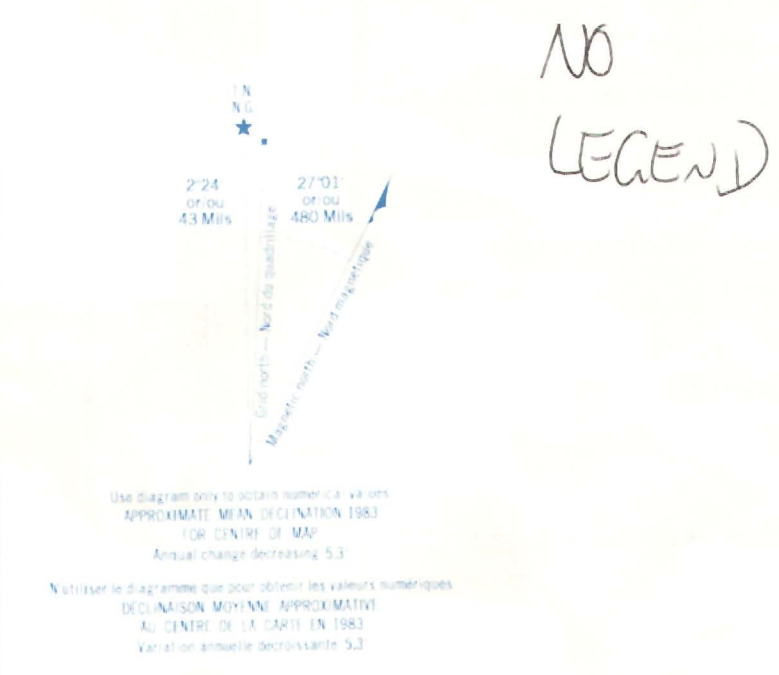
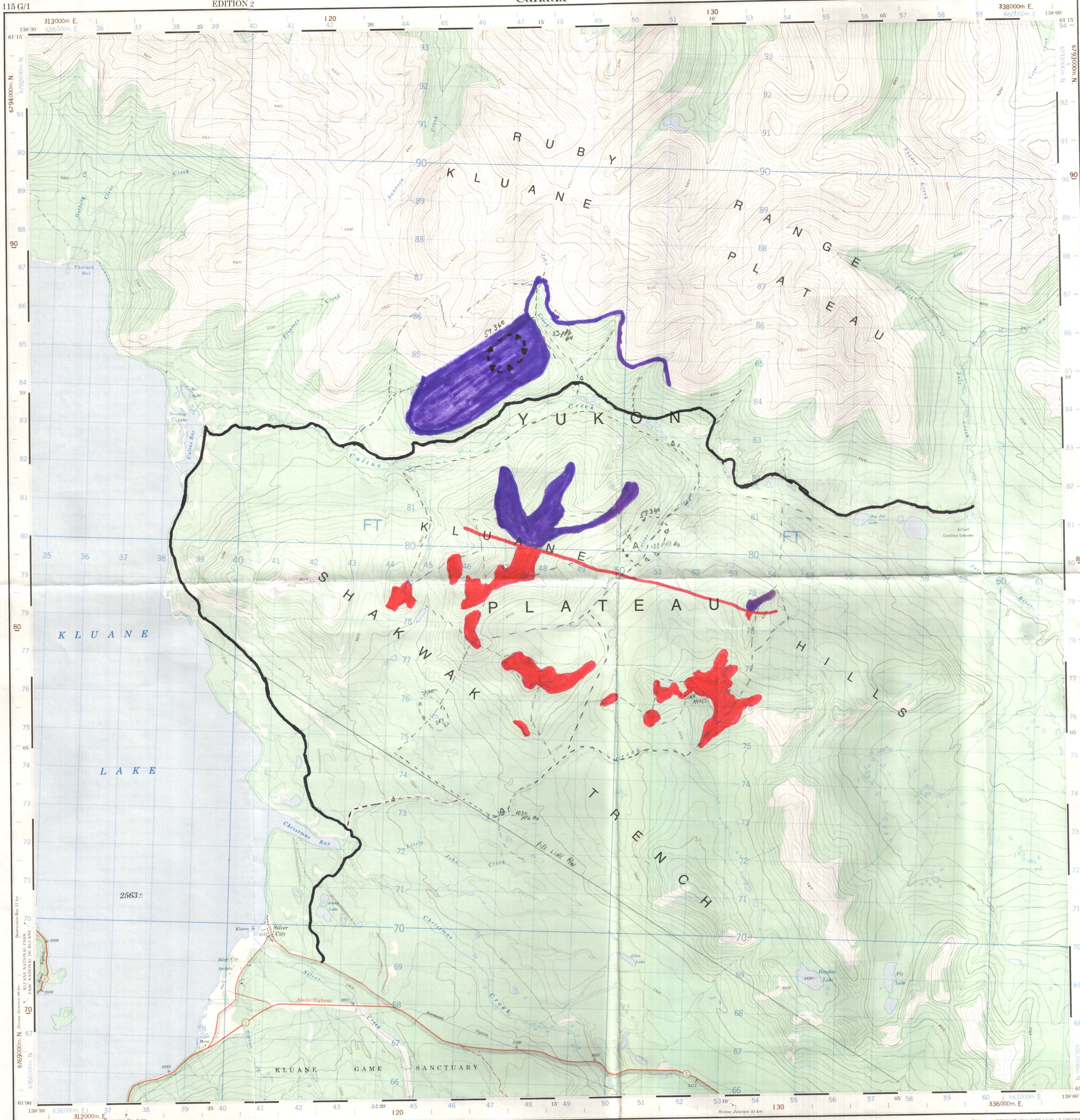
4170' Lat

117° 15' W Lon

117° 15' W Lon

4170' Lat

Military users refer to this map as Reference de cette carte pour usage militaire



ONE THOUSAND METRE UNIVERSAL TRANSVERSE MERCATOR GRID ZONE 7

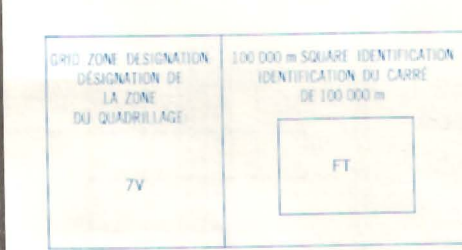
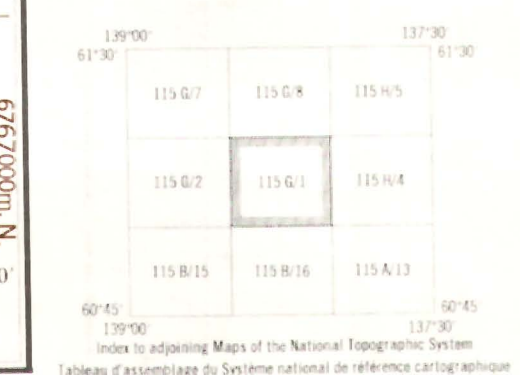


Table with 2 columns: 'EXAMPLES OF METHOD USED TO OBTAIN ALTITUDES TO METERS (FOOT METERS)' and 'EXEMPLES DE LA MÉTHODE EMPLOYÉE POUR OBTENIR LES HAUTEURS EN MÈTRES (PES MÈTRES)'. It lists various methods like 'Elevation from bench mark' and 'Spot heights'.

BROWN NUMBERED TICKS INDICATE THE 1000 METRE U.T.M. GRID ZONE 8

LES AMORCES BRUNES NUMÉRÉES REPRÉSENT LE QUADRILLAGE DE 1000 MÈTRES U.T.M.



Produced by the SURVEYS AND MAPPING BRANCH, DEPARTMENT OF ENERGY, MINES AND RESOURCES...

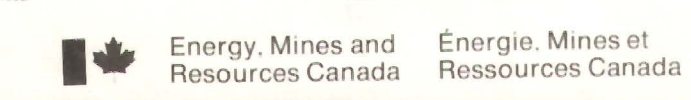
Scale 1:50,000 Échelle. Includes a scale bar in meters and yards, and a legend for symbols like roads, rivers, and contour lines.

CONVERSION SCALE FOR ELEVATIONS. Includes a table for converting between feet, meters, and yards.

CONVERSION DES COURBES DES PIEDS. Includes a table for converting between feet and meters for contour lines.

Échelle de la Direction des Levés et de la Cartographie. Includes information about the map's projection and datum.

CULTUS CREEK 115 G/1 EDITION 2

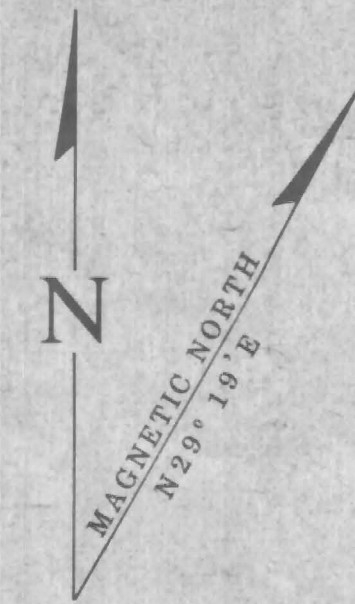


**115 G-1**  
**QUARTZ & PLACER**

LATITUDE 61°00' 61°15'  
 LONGITUDE 138°00' 138°30'

ISSUED UNDER THE AUTHORITY OF THE MINISTER  
 OF INDIAN AFFAIRS AND NORTHERN DEVELOPMENT

SCALE 1:30,000



NOTE:  
 THIS MAP IS ISSUED AS A PRELIMINARY GUIDE FOR WHICH THE DEPARTMENT OF INDIAN AFFAIRS AND NORTHERN DEVELOPMENT WILL ACCEPT NO RESPONSIBILITY FOR ANY ERRORS, INACCURACIES OR OMISSIONS WHATSOEVER.

TOPOGRAPHY COMPILED FROM 1:50,000 NATIONAL TOPOGRAPHIC SERIES. CONTOUR INTERVAL 500 FEET. SURVEY INFORMATION COMPILED FROM LEGAL SURVEYS BY DRAFTING SERVICES.

Note: Entry on certain lands is withdrawn from staking in cross-hatched areas to facilitate the settlement of Native Land Claims without prejudice to Existing Surface and Subsurface Rights.

115 G-7	115 G-8	115 H-5
115 G-2	115 G-1	115 H-4
115 B/15	115 B/16	115 A/11

27 NOV 93  
 21 AUG 95  
 19 AUG 95  
 13 AUG 95  
 05 JUL 95  
 04 JUL 95  
 02 JUL 95  
 01 JUL 95  
 25 JUN 95  
 17 JUN 95  
 06 JUN 95  
 02 MAY 95  
 01 MAY 95  
 12 APR 95  
 08 APR 95  
 07 APR 95  
 05 APR 95  
 04 APR 95  
 03 APR 95  
 02 APR 95  
 01 APR 95  
 31 MAR 95  
 30 MAR 95  
 29 MAR 95  
 28 MAR 95  
 27 MAR 95  
 26 MAR 95  
 25 MAR 95  
 24 MAR 95  
 23 MAR 95  
 22 MAR 95  
 21 MAR 95  
 20 MAR 95  
 19 MAR 95  
 18 MAR 95  
 17 MAR 95  
 16 MAR 95  
 15 MAR 95  
 14 MAR 95  
 13 MAR 95  
 12 MAR 95  
 11 MAR 95  
 10 MAR 95  
 09 MAR 95  
 08 MAR 95  
 07 MAR 95  
 06 MAR 95  
 05 MAR 95  
 04 MAR 95  
 03 MAR 95  
 02 MAR 95  
 01 MAR 95  
 31 FEB 95  
 30 FEB 95  
 29 FEB 95  
 28 FEB 95  
 27 FEB 95  
 26 FEB 95  
 25 FEB 95  
 24 FEB 95  
 23 FEB 95  
 22 FEB 95  
 21 FEB 95  
 20 FEB 95  
 19 FEB 95  
 18 FEB 95  
 17 FEB 95  
 16 FEB 95  
 15 FEB 95  
 14 FEB 95  
 13 FEB 95  
 12 FEB 95  
 11 FEB 95  
 10 FEB 95  
 09 FEB 95  
 08 FEB 95  
 07 FEB 95  
 06 FEB 95  
 05 FEB 95  
 04 FEB 95  
 03 FEB 95  
 02 FEB 95  
 01 FEB 95  
 31 JAN 95  
 30 JAN 95  
 29 JAN 95  
 28 JAN 95  
 27 JAN 95  
 26 JAN 95  
 25 JAN 95  
 24 JAN 95  
 23 JAN 95  
 22 JAN 95  
 21 JAN 95  
 20 JAN 95  
 19 JAN 95  
 18 JAN 95  
 17 JAN 95  
 16 JAN 95  
 15 JAN 95  
 14 JAN 95  
 13 JAN 95  
 12 JAN 95  
 11 JAN 95  
 10 JAN 95  
 09 JAN 95  
 08 JAN 95  
 07 JAN 95  
 06 JAN 95  
 05 JAN 95  
 04 JAN 95  
 03 JAN 95  
 02 JAN 95  
 01 JAN 95  
 31 DEC 94  
 30 DEC 94  
 29 DEC 94  
 28 DEC 94  
 27 DEC 94  
 26 DEC 94  
 25 DEC 94  
 24 DEC 94  
 23 DEC 94  
 22 DEC 94  
 21 DEC 94  
 20 DEC 94  
 19 DEC 94  
 18 DEC 94  
 17 DEC 94  
 16 DEC 94  
 15 DEC 94  
 14 DEC 94  
 13 DEC 94  
 12 DEC 94  
 11 DEC 94  
 10 DEC 94  
 09 DEC 94  
 08 DEC 94  
 07 DEC 94  
 06 DEC 94  
 05 DEC 94  
 04 DEC 94  
 03 DEC 94  
 02 DEC 94  
 01 DEC 94  
 31 NOV 94  
 30 NOV 94  
 29 NOV 94  
 28 NOV 94  
 27 NOV 94  
 26 NOV 94  
 25 NOV 94  
 24 NOV 94  
 23 NOV 94  
 22 NOV 94  
 21 NOV 94  
 20 NOV 94  
 19 NOV 94  
 18 NOV 94  
 17 NOV 94  
 16 NOV 94  
 15 NOV 94  
 14 NOV 94  
 13 NOV 94  
 12 NOV 94  
 11 NOV 94  
 10 NOV 94  
 09 NOV 94  
 08 NOV 94  
 07 NOV 94  
 06 NOV 94  
 05 NOV 94  
 04 NOV 94  
 03 NOV 94  
 02 NOV 94  
 01 NOV 94  
 31 OCT 94  
 30 OCT 94  
 29 OCT 94  
 28 OCT 94  
 27 OCT 94  
 26 OCT 94  
 25 OCT 94  
 24 OCT 94  
 23 OCT 94  
 22 OCT 94  
 21 OCT 94  
 20 OCT 94  
 19 OCT 94  
 18 OCT 94  
 17 OCT 94  
 16 OCT 94  
 15 OCT 94  
 14 OCT 94  
 13 OCT 94  
 12 OCT 94  
 11 OCT 94  
 10 OCT 94  
 09 OCT 94  
 08 OCT 94  
 07 OCT 94  
 06 OCT 94  
 05 OCT 94  
 04 OCT 94  
 03 OCT 94  
 02 OCT 94  
 01 OCT 94  
 31 SEP 94  
 30 SEP 94  
 29 SEP 94  
 28 SEP 94  
 27 SEP 94  
 26 SEP 94  
 25 SEP 94  
 24 SEP 94  
 23 SEP 94  
 22 SEP 94  
 21 SEP 94  
 20 SEP 94  
 19 SEP 94  
 18 SEP 94  
 17 SEP 94  
 16 SEP 94  
 15 SEP 94  
 14 SEP 94  
 13 SEP 94  
 12 SEP 94  
 11 SEP 94  
 10 SEP 94  
 09 SEP 94  
 08 SEP 94  
 07 SEP 94  
 06 SEP 94  
 05 SEP 94  
 04 SEP 94  
 03 SEP 94  
 02 SEP 94  
 01 SEP 94  
 31 AUG 94  
 30 AUG 94  
 29 AUG 94  
 28 AUG 94  
 27 AUG 94  
 26 AUG 94  
 25 AUG 94  
 24 AUG 94  
 23 AUG 94  
 22 AUG 94  
 21 AUG 94  
 20 AUG 94  
 19 AUG 94  
 18 AUG 94  
 17 AUG 94  
 16 AUG 94  
 15 AUG 94  
 14 AUG 94  
 13 AUG 94  
 12 AUG 94  
 11 AUG 94  
 10 AUG 94  
 09 AUG 94  
 08 AUG 94  
 07 AUG 94  
 06 AUG 94  
 05 AUG 94  
 04 AUG 94  
 03 AUG 94  
 02 AUG 94  
 01 AUG 94  
 31 JUL 94  
 30 JUL 94  
 29 JUL 94  
 28 JUL 94  
 27 JUL 94  
 26 JUL 94  
 25 JUL 94  
 24 JUL 94  
 23 JUL 94  
 22 JUL 94  
 21 JUL 94  
 20 JUL 94  
 19 JUL 94  
 18 JUL 94  
 17 JUL 94  
 16 JUL 94  
 15 JUL 94  
 14 JUL 94  
 13 JUL 94  
 12 JUL 94  
 11 JUL 94  
 10 JUL 94  
 09 JUL 94  
 08 JUL 94  
 07 JUL 94  
 06 JUL 94  
 05 JUL 94  
 04 JUL 94  
 03 JUL 94  
 02 JUL 94  
 01 JUL 94  
 31 JUN 94  
 30 JUN 94  
 29 JUN 94  
 28 JUN 94  
 27 JUN 94  
 26 JUN 94  
 25 JUN 94  
 24 JUN 94  
 23 JUN 94  
 22 JUN 94  
 21 JUN 94  
 20 JUN 94  
 19 JUN 94  
 18 JUN 94  
 17 JUN 94  
 16 JUN 94  
 15 JUN 94  
 14 JUN 94  
 13 JUN 94  
 12 JUN 94  
 11 JUN 94  
 10 JUN 94  
 09 JUN 94  
 08 JUN 94  
 07 JUN 94  
 06 JUN 94  
 05 JUN 94  
 04 JUN 94  
 03 JUN 94  
 02 JUN 94  
 01 JUN 94  
 31 MAY 94  
 30 MAY 94  
 29 MAY 94  
 28 MAY 94  
 27 MAY 94  
 26 MAY 94  
 25 MAY 94  
 24 MAY 94  
 23 MAY 94  
 22 MAY 94  
 21 MAY 94  
 20 MAY 94  
 19 MAY 94  
 18 MAY 94  
 17 MAY 94  
 16 MAY 94  
 15 MAY 94  
 14 MAY 94  
 13 MAY 94  
 12 MAY 94  
 11 MAY 94  
 10 MAY 94  
 09 MAY 94  
 08 MAY 94  
 07 MAY 94  
 06 MAY 94  
 05 MAY 94  
 04 MAY 94  
 03 MAY 94  
 02 MAY 94  
 01 MAY 94  
 31 APR 94  
 30 APR 94  
 29 APR 94  
 28 APR 94  
 27 APR 94  
 26 APR 94  
 25 APR 94  
 24 APR 94  
 23 APR 94  
 22 APR 94  
 21 APR 94  
 20 APR 94  
 19 APR 94  
 18 APR 94  
 17 APR 94  
 16 APR 94  
 15 APR 94  
 14 APR 94  
 13 APR 94  
 12 APR 94  
 11 APR 94  
 10 APR 94  
 09 APR 94  
 08 APR 94  
 07 APR 94  
 06 APR 94  
 05 APR 94  
 04 APR 94  
 03 APR 94  
 02 APR 94  
 01 APR 94  
 31 MAR 94  
 30 MAR 94  
 29 MAR 94  
 28 MAR 94  
 27 MAR 94  
 26 MAR 94  
 25 MAR 94  
 24 MAR 94  
 23 MAR 94  
 22 MAR 94  
 21 MAR 94  
 20 MAR 94  
 19 MAR 94  
 18 MAR 94  
 17 MAR 94  
 16 MAR 94  
 15 MAR 94  
 14 MAR 94  
 13 MAR 94  
 12 MAR 94  
 11 MAR 94  
 10 MAR 94  
 09 MAR 94  
 08 MAR 94  
 07 MAR 94  
 06 MAR 94  
 05 MAR 94  
 04 MAR 94  
 03 MAR 94  
 02 MAR 94  
 01 MAR 94  
 31 FEB 94  
 30 FEB 94  
 29 FEB 94  
 28 FEB 94  
 27 FEB 94  
 26 FEB 94  
 25 FEB 94  
 24 FEB 94  
 23 FEB 94  
 22 FEB 94  
 21 FEB 94  
 20 FEB 94  
 19 FEB 94  
 18 FEB 94  
 17 FEB 94  
 16 FEB 94  
 15 FEB 94  
 14 FEB 94  
 13 FEB 94  
 12 FEB 94  
 11 FEB 94  
 10 FEB 94  
 09 FEB 94  
 08 FEB 94  
 07 FEB 94  
 06 FEB 94  
 05 FEB 94  
 04 FEB 94  
 03 FEB 94  
 02 FEB 94  
 01 FEB 94  
 31 JAN 94  
 30 JAN 94  
 29 JAN 94  
 28 JAN 94  
 27 JAN 94  
 26 JAN 94  
 25 JAN 94  
 24 JAN 94  
 23 JAN 94  
 22 JAN 94  
 21 JAN 94  
 20 JAN 94  
 19 JAN 94  
 18 JAN 94  
 17 JAN 94  
 16 JAN 94  
 15 JAN 94  
 14 JAN 94  
 13 JAN 94  
 12 JAN 94  
 11 JAN 94  
 10 JAN 94  
 09 JAN 94  
 08 JAN 94  
 07 JAN 94  
 06 JAN 94  
 05 JAN 94  
 04 JAN 94  
 03 JAN 94  
 02 JAN 94  
 01 JAN 94  
 31 DEC 93  
 30 DEC 93  
 29 DEC 93  
 28 DEC 93  
 27 DEC 93  
 26 DEC 93  
 25 DEC 93  
 24 DEC 93  
 23 DEC 93  
 22 DEC 93  
 21 DEC 93  
 20 DEC 93  
 19 DEC 93  
 18 DEC 93  
 17 DEC 93  
 16 DEC 93  
 15 DEC 93  
 14 DEC 93  
 13 DEC 93  
 12 DEC 93  
 11 DEC 93  
 10 DEC 93  
 09 DEC 93  
 08 DEC 93  
 07 DEC 93  
 06 DEC 93  
 05 DEC 93  
 04 DEC 93  
 03 DEC 93  
 02 DEC 93  
 01 DEC 93  
 31 NOV 93  
 30 NOV 93  
 29 NOV 93  
 28 NOV 93  
 27 NOV 93  
 26 NOV 93  
 25 NOV 93  
 24 NOV 93  
 23 NOV 93  
 22 NOV 93  
 21 NOV 93  
 20 NOV 93  
 19 NOV 93  
 18 NOV 93  
 17 NOV 93  
 16 NOV 93  
 15 NOV 93  
 14 NOV 93  
 13 NOV 93  
 12 NOV 93  
 11 NOV 93  
 10 NOV 93  
 09 NOV 93  
 08 NOV 93  
 07 NOV 93  
 06 NOV 93  
 05 NOV 93  
 04 NOV 93  
 03 NOV 93  
 02 NOV 93  
 01 NOV 93  
 31 OCT 93  
 30 OCT 93  
 29 OCT 93  
 28 OCT 93  
 27 OCT 93  
 26 OCT 93  
 25 OCT 93  
 24 OCT 93  
 23 OCT 93  
 22 OCT 93  
 21 OCT 93  
 20 OCT 93  
 19 OCT 93  
 18 OCT 93  
 17 OCT 93  
 16 OCT 93  
 15 OCT 93  
 14 OCT 93  
 13 OCT 93  
 12 OCT 93  
 11 OCT 93  
 10 OCT 93  
 09 OCT 93  
 08 OCT 93  
 07 OCT 93  
 06 OCT 93  
 05 OCT 93  
 04 OCT 93  
 03 OCT 93  
 02 OCT 93  
 01 OCT 93  
 31 SEP 93  
 30 SEP 93  
 29 SEP 93  
 28 SEP 93  
 27 SEP 93  
 26 SEP 93  
 25 SEP 93  
 24 SEP 93  
 23 SEP 93  
 22 SEP 93  
 21 SEP 93  
 20 SEP 93  
 19 SEP 93  
 18 SEP 93  
 17 SEP 93  
 16 SEP 93  
 15 SEP 93  
 14 SEP 93  
 13 SEP 93  
 12 SEP 93  
 11 SEP 93  
 10 SEP 93  
 09 SEP 93  
 08 SEP 93  
 07 SEP 93  
 06 SEP 93  
 05 SEP 93  
 04 SEP 93  
 03 SEP 93  
 02 SEP 93  
 01 SEP 93  
 31 AUG 93  
 30 AUG 93  
 29 AUG 93  
 28 AUG 93  
 27 AUG 93  
 26 AUG 93  
 25 AUG 93  
 24 AUG 93  
 23 AUG 93  
 22 AUG 93  
 21 AUG 93  
 20 AUG 93  
 19 AUG 93  
 18 AUG 93  
 17 AUG 93  
 16 AUG 93  
 15 AUG 93  
 14 AUG 93  
 13 AUG 93  
 12 AUG 93  
 11 AUG 93  
 10 AUG 93  
 09 AUG 93  
 08 AUG 93  
 07 AUG 93  
 06 AUG 93  
 05 AUG 93  
 04 AUG 93  
 03 AUG 93  
 02 AUG 93  
 01 AUG 93  
 31 JUL 93  
 30 JUL 93  
 29 JUL 93  
 28 JUL 93  
 27 JUL 93  
 26 JUL 93  
 25 JUL 93  
 24 JUL 93  
 23 JUL 93  
 22 JUL 93  
 21 JUL 93  
 20 JUL 93  
 19 JUL 93  
 18 JUL 93  
 17 JUL 93  
 16 JUL 93  
 15 JUL 93  
 14 JUL 93  
 13 JUL 93  
 12 JUL 93  
 11 JUL 93  
 10 JUL 93  
 09 JUL 93  
 08 JUL 93  
 07 JUL 93  
 06 JUL 93  
 05 JUL 93  
 04 JUL 93  
 03 JUL 93  
 02 JUL 93  
 01 JUL 93  
 31 JUN 93  
 30 JUN 93  
 29 JUN 93  
 28 JUN 93  
 27 JUN 93  
 26 JUN 93  
 25 JUN 93  
 24 JUN 93  
 23 JUN 93  
 22 JUN 93  
 21 JUN 93  
 20 JUN 93  
 19 JUN 93  
 18 JUN 93  
 17 JUN 93  
 16 JUN 93  
 15 JUN 93  
 14 JUN 93  
 13 JUN 93  
 12 JUN 93  
 11 JUN 93  
 10 JUN 93  
 09 JUN 93  
 08 JUN 93  
 07 JUN 93  
 06 JUN 93  
 05 JUN 93  
 04 JUN 93  
 03 JUN 93  
 02 JUN 93  
 01 JUN 93  
 31 MAY 93  
 30 MAY 93  
 29 MAY 93  
 28 MAY 93  
 27 MAY 93  
 26 MAY 93  
 25 MAY 93  
 24 MAY 93  
 23 MAY 93  
 22 MAY 93  
 21 MAY 93  
 20 MAY 93  
 19 MAY 93  
 18 MAY 93  
 17 MAY 93  
 16 MAY 93  
 15 MAY 93  
 14 MAY 93  
 13 MAY 93  
 12 MAY 93  
 11 MAY 93  
 10 MAY 93  
 09 MAY 93  
 08 MAY 93  
 07 MAY 93  
 06 MAY 93  
 05 MAY 93  
 04 MAY 93  
 03 MAY 93  
 02 MAY 93  
 01 MAY 93  
 31 APR 93  
 30 APR 93  
 29 APR 93  
 28 APR 93  
 27 APR 93  
 26 APR 93  
 25 APR 93  
 24 APR 93  
 23 APR 93  
 22 APR 93  
 21 APR 93  
 20 APR 93  
 19 APR 93  
 18 APR 93  
 17 APR 93  
 16 APR 93  
 15 APR 93  
 14 APR 93  
 13 APR 93  
 12 APR 93  
 11 APR 93  
 10 APR 93  
 09 APR 93  
 08 APR 93  
 07 APR 93  
 06 APR 93  
 05 APR 93  
 04 APR 93  
 03 APR 93  
 02 APR 93  
 01 APR 93  
 31 MAR 93  
 30 MAR 93  
 29 MAR 93  
 28 MAR 93  
 27 MAR 93  
 26 MAR 93  
 25 MAR 93  
 24 MAR 93  
 23 MAR 93  
 22 MAR 93  
 21 MAR 93  
 20 MAR 93  
 19 MAR 93  
 18 MAR 93  
 17 MAR 93  
 16 MAR 93  
 15 MAR 93  
 14 MAR 93  
 13 MAR 93  
 12 MAR 93  
 11 MAR 93  
 10 MAR 93  
 09 MAR 93  
 08 MAR 93  
 07 MAR 93  
 06 MAR 93  
 05 MAR 93  
 04 MAR 93  
 03 MAR 93  
 02 MAR 93  
 01 MAR 93  
 31 FEB 93  
 30 FEB 93  
 29 FEB 93  
 28 FEB 93  
 27 FEB 93  
 26 FEB 93  
 25 FEB 93  
 24 FEB 93  
 23 FEB 93  
 22 FEB 93  
 21 FEB 93  
 20 FEB 93  
 19 FEB 93  
 18 FEB 93  
 17 FEB 93  
 16 FEB 93  
 15 FEB 93  
 14 FEB 93  
 13 FEB 93  
 12 FEB 93  
 11 FEB 93  
 10 FEB 93  
 09 FEB 93  
 08 FEB 93  
 07 FEB 93  
 06 FEB 93  
 05 FEB 93  
 04 FEB 93  
 03 FEB 93  
 02 FEB 93  
 01 FEB 93  
 31 JAN 93  
 30 JAN 93  
 29 JAN 93  
 28 JAN 93  
 27 JAN 93  
 26 JAN 93  
 25 JAN 93  
 24 JAN 93  
 23 JAN 93  
 22 JAN 93  
 21 JAN 93  
 20 JAN 93  
 19 JAN 93  
 18 JAN 93  
 17 JAN 93  
 16 JAN 93  
 15 JAN 93  
 14 JAN 93  
 13 JAN 93  
 12 JAN 93  
 11 JAN 93  
 10 JAN 93  
 09 JAN 93  
 08 JAN 93  
 07 JAN 93  
 06 JAN 93  
 05 JAN 93  
 04 JAN 93  
 03 JAN 93  
 02 JAN 93  
 01 JAN 93  
 31 DEC 92  
 30 DEC 92  
 29 DEC 92  
 28 DEC 92  
 27 DEC 92  
 26 DEC 92  
 25 DEC 92  
 24 DEC 92  
 23 DEC 92  
 22 DEC 92  
 21 DEC 92  
 20 DEC 92  
 19 DEC 92  
 18 DEC 92  
 17 DEC 92  
 16 DEC 92  
 15 DEC 92  
 14 DEC 92  
 13 DEC 92  
 12 DEC 92  
 11 DEC 92  
 10 DEC 92  
 09 DEC 92  
 08 DEC 92  
 07 DEC 92  
 06 DEC 92  
 05 DEC 92  
 04 DEC 92  
 03 DEC 92  
 02 DEC 92  
 01 DEC 92  
 31 NOV 92  
 30 NOV 92  
 29 NOV 92  
 28 NOV 92  
 27 NOV 92  
 26 NOV 92  
 25 NOV 92  
 24 NOV 92  
 23 NOV 92  
 22 NOV 92  
 21 NOV 92  
 20 NOV 92  
 19 NOV 92  
 18 NOV 92  
 17 NOV 92  
 16 NOV 92  
 15 NOV 92  
 14 NOV 92  
 13 NOV 92  
 12 NOV 92  
 11 NOV 92  
 10 NOV 92  
 09 NOV 92  
 08 NOV 92  
 07 NOV 92  
 06 NOV 92  
 05 NOV 92  
 04 NOV 92  
 03 NOV 92  
 02 NOV 92  
 01 NOV 92  
 31 OCT 92  
 30 OCT 92  
 29 OCT 92  
 28 OCT 92  
 27 OCT 92  
 26 OCT 92  
 25 OCT 92  
 24 OCT 92  
 23 OCT 92  
 22 OCT 92  
 21 OCT 92  
 20 OCT 92  
 19 OCT 92  
 18 OCT 92  
 17 OCT 92  
 16 OCT 92  
 15 OCT 92  
 14 OCT 92  
 13 OCT 92  
 12 OCT 92  
 11 OCT 92  
 10 OCT 92  
 09 OCT 92  
 08 OCT 92  
 07 OCT 92  
 06 OCT 92  
 05 OCT 92  
 04 OCT 92  
 03 OCT 92  
 02 OCT 92  
 01 OCT 92  
 31 SEP 92  
 30 SEP 92  
 29 SEP 92  
 28 SEP 92  
 27 SEP 92  
 26 SEP 92  
 25 SEP 92  
 24 SEP 92  
 23 SEP 92  
 22 SEP 92  
 21 SEP 92  
 20 SEP 92  
 19 SEP 92  
 18 SEP 92  
 17 SEP 92  
 16 SEP 92  
 15 SEP 92  
 14 SEP 92  
 13 SEP 92  
 12 SEP 92  
 11 SEP 92  
 10 SEP 92  
 09 SEP 92  
 08 SEP 92  
 07 SEP 92  
 06 SEP 92  
 05 SEP 92  
 04 SEP 92  
 03 SEP 92  
 02 SEP 92  
 01 SEP 92  
 31 AUG 92  
 30 AUG 92  
 29 AUG 92  
 28 AUG 92  
 27 AUG 92  
 26 AUG 92  
 25 AUG 92  
 24 AUG 92  
 23 AUG 92  
 22 AUG 92  
 21 AUG 92  
 20 AUG 92  
 19 AUG 92  
 18 AUG 92  
 17 AUG 92  
 16 AUG 92  
 15 AUG 92  
 14 AUG 92  
 13 AUG 92  
 12 AUG 92  
 11 AUG 92  
 10 AUG 92  
 09 AUG 92  
 08 AUG 92  
 07 AUG 92  
 06 AUG 92  
 05 AUG 92  
 04 AUG 92  
 03 AUG 92  
 02 AUG 92  
 01 AUG 92  
 31 JUL 92  
 30 JUL 92  
 29 JUL 92  
 28 JUL 92  
 27 JUL 92  
 26 JUL 92  
 25 JUL 92  
 24 JUL 92  
 23 JUL 92  
 22 JUL 92  
 21 JUL 92  
 20 JUL 92  
 19 JUL 92  
 18 JUL 92  
 17 JUL 92  
 16 JUL 92  
 15 JUL 92  
 14 JUL 92  
 13 JUL 92  
 12 JUL 92  
 11 JUL 92  
 10 JUL 92  
 09 JUL 92  
 08 JUL 92  
 07 JUL 92  
 06 JUL 92  
 05 JUL 92  
 04 JUL 92  
 03 JUL 92  
 02 JUL 92  
 01 JUL 92  
 31 JUN 92  
 30 JUN 92  
 29 JUN 92  
 28 JUN 92  
 27 JUN 92  
 26 JUN 92  
 25 JUN 92  
 24 JUN 92  
 23 JUN 92  
 22 JUN 92  
 21 JUN 92  
 20 JUN 92  
 19 JUN



**115 G-1**  
**QUARTZ & PLACER**

LATITUDE 61°00' 61°15'  
 LONGITUDE 138°00' 138°30'

ISSUED UNDER THE AUTHORITY OF THE MINISTER  
 OF  
 INDIAN AFFAIRS AND NORTHERN DEVELOPMENT

SCALE 1:50,000



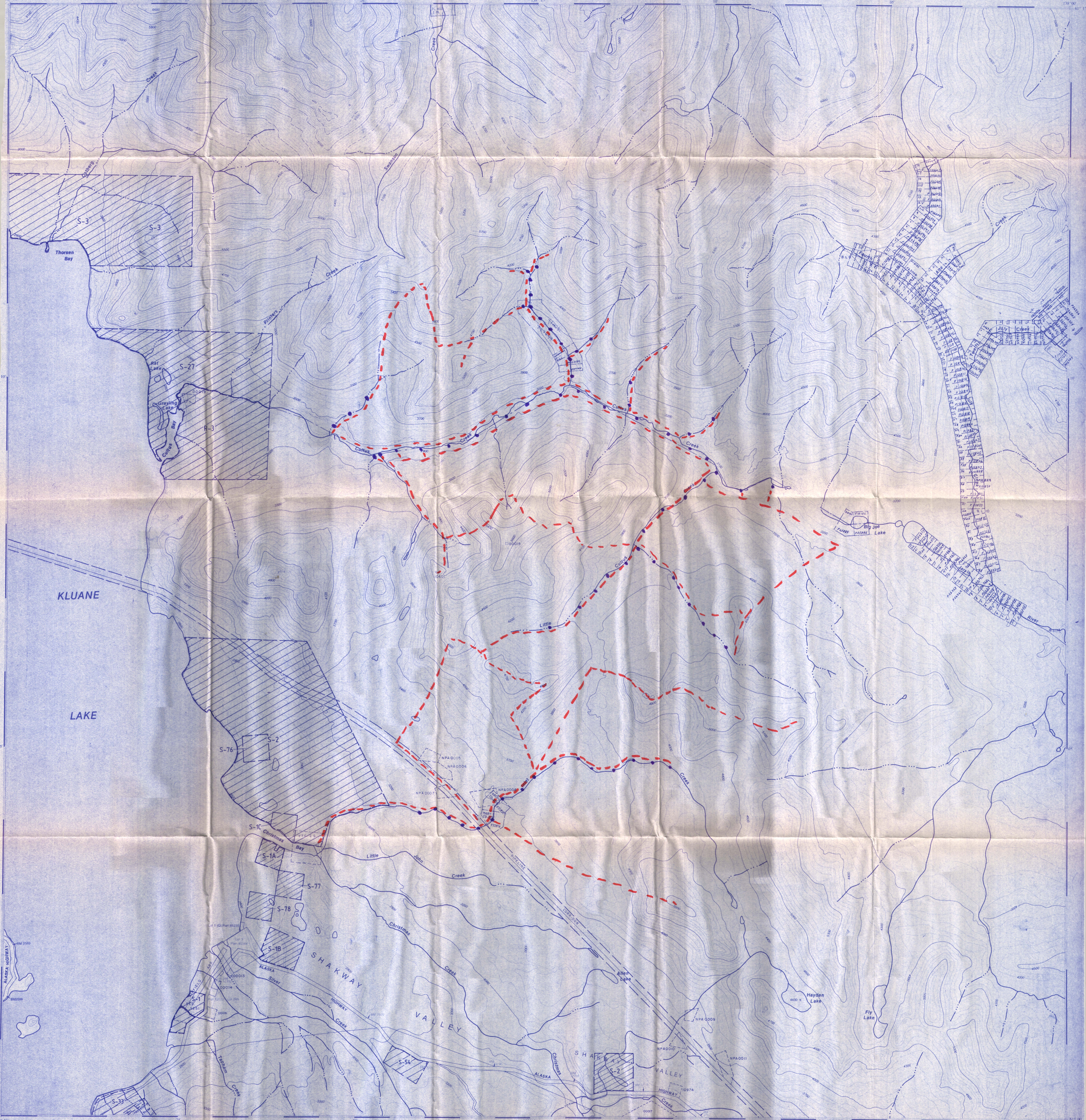
NOTE:  
 THIS MAP IS ISSUED AS A PRELIMINARY GUIDE FOR WHICH THE DEPARTMENT OF INDIAN AFFAIRS AND NORTHERN DEVELOPMENT WILL ACCEPT NO RESPONSIBILITY FOR ANY ERRORS, INACCURACIES OR OMISSIONS WHATSOEVER.

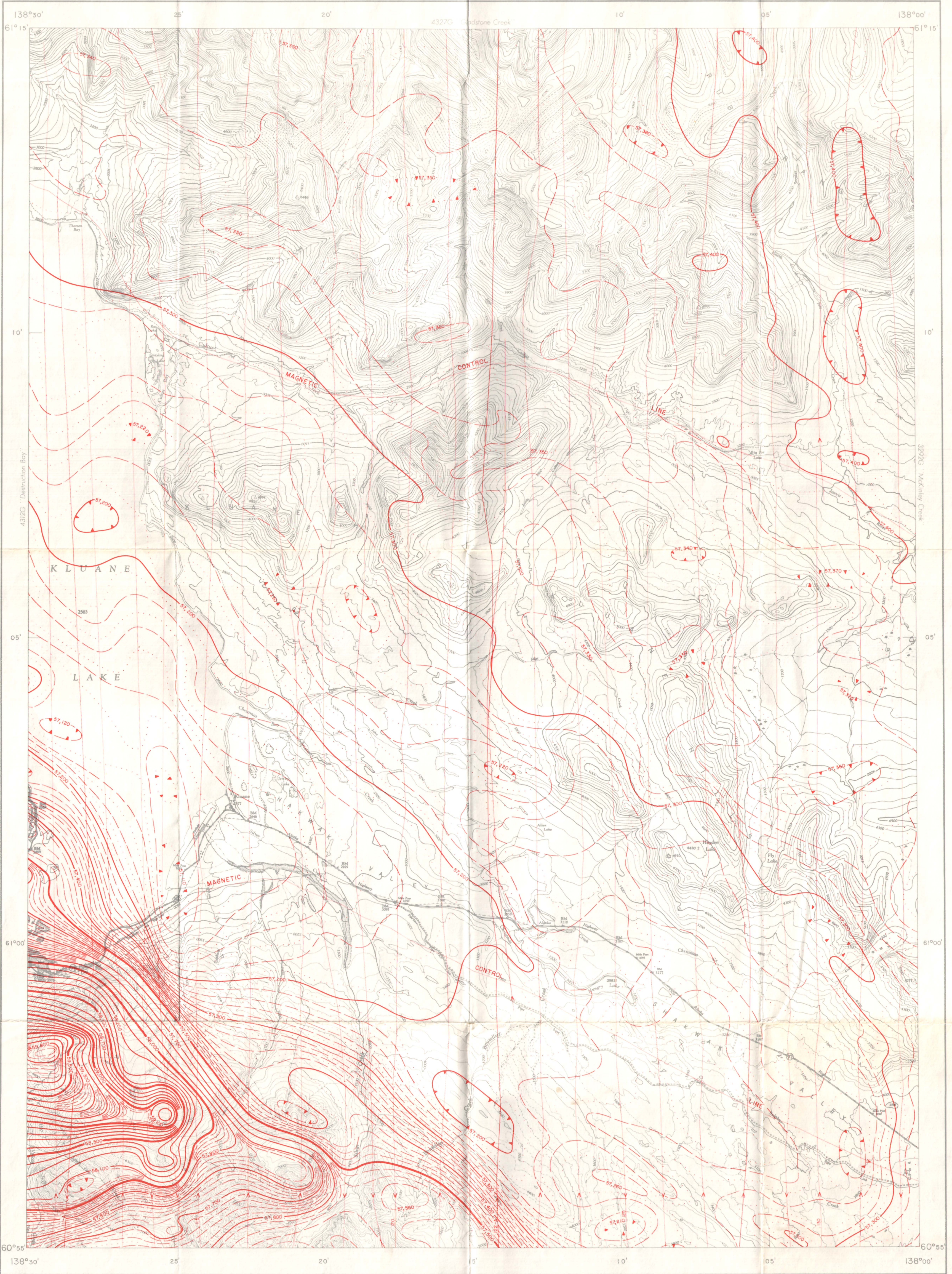
TOPOGRAPHY COMPILED FROM 1:50,000 NATIONAL TOPOGRAPHIC SERIES. CONTOUR INTERVAL 50 FEET. SURVEY INFORMATION COMPILED FROM LEGAL SURVEYS BY DRAFTING SERVICES.

Note: Entry on certain lands is withdrawn from staking in cross-hatched areas to facilitate the settlement of Native Land Claims without prejudice to Existing Surface and Subsurface Rights.

115 G-7	115 G-8	115 H-5
115 G-2	115 G-1	115 H-4
115 B-15	115 B-16	115 A-13

WHITEHORSE APR. 9, 1986

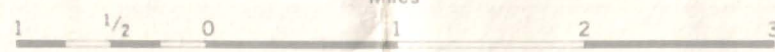




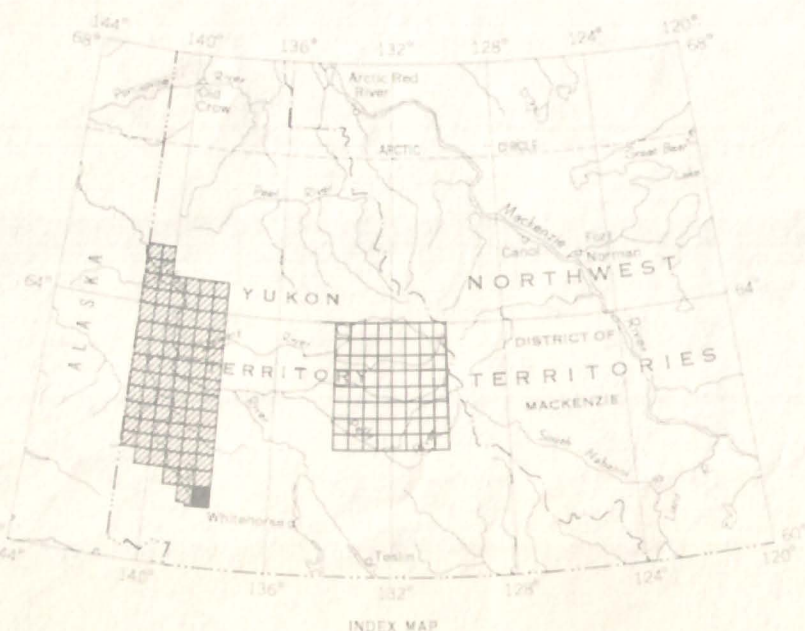
MAP 4326 G

### CULTUS CREEK YUKON TERRITORY

Scale: One Inch to One Mile =  $\frac{1}{63,360}$   
Miles



COPIES OF THIS MAP MAY BE OBTAINED FROM THE  
DIRECTOR, GEOLOGICAL SURVEY OF CANADA, OTTAWA



- ISOMAGNETIC LINES (absolute total field)
- 500 gammas
- 100 gammas
- 20 gammas
- 10 gammas
- Magnetic depression
- Flight lines
- Flight altitude normally 1000 feet above ground level where terrain permitted

Magnetic survey, March 1967 to May 1968 by Aero Photo Inc.

No correction has been made for regional variation.

The planimetry for this map was obtained from advance information supplied by the Department of Energy, Mines and Resources.

The magnetic data on this map were compiled from information recorded along the flight lines shown. The anomalies expressed by the magnetic contours are dependent on the variable magnetic intensities of the underlying rocks, and may be due to conditions near, or at unknown depths below, the surface. High magnetic anomalies normally indicate the presence of basic rocks, such as gabbro, diorite, or serpentinite, which have a relatively high iron content; but in special instances may be due, in part, to concentrations of magnetic ore minerals. By means of the magnetic anomalies, various rock bodies or structural features, such as faults or folds, may be traced into, or across, areas of low or no outcrops. In many instances, however, no interpretation of particular anomalies may be possible without further geological information.

GEOPHYSICS PAPER 4326

CULTUS CREEK

YUKON TERRITORY

SHEET 115 G  
T

