

Summer 1994

MAY 21

Drove to Whitehouse
from Nowson city
for groceries equipment
and life jacket
for boat
300 Km.

MAY 27
Gather groceries
pump etc in
Whitehorse

May 23, 1994

Travel back to
Lawson from
Whitehorse 500
km.

REINDEER CREEK
gneissic gneiss

gneiss ~~Quartzite~~
shist slate

pinestone

Hornet Hornfels

Quartzite boulders

MAY 24. (1)

Went up upon
river from Dawson
to Indian River
Cabin with
gas & supplies
with 4 horse
Nisson boat motor
& 18 ft fibreclay
boat. Hauled
up A.T.V. &
husky dog Chief.

May 25

(2)

Went with motor
boat from Indian
River Cabin to
Riender Creek
Went with AUV
hauling in a
few supplies, Went
3 miles ~~and~~ trail
is rough and
water crossings
too deep, Made
camp and stayed
overnight

May 26 (3)

Worked old cot
workings. Panned
test holes lots
of small garnets
and a few fine
gold flakes. Very
light black sand.

May 27

(4)

Walking and packing
further up Kierdeeg
to ~~the~~ Canyon
5-6 miles ~~from~~
upon Pikes,
Set up night
camp.

May 28

(5)

Bostor's map
shows granite
intrusions on right
limit. Found 2
old trenches & some
float ~~quartz~~ quartz
appears to be
full quartz.

May 29

(6)

Further prospect
longer, panned
small wash next
to benches was
able to pan ~~large~~
fine gold to the
upper benches.

Sold as micro
& fine. Took a
rock & silt sample.

May 30

(7)

Continued on up
Pender Crk. to
what I will call
No Name Pup
and set up camp
Found an older
camp with a wall
tent some supplies
& 30-30 Rifle.
Later found out it
belongs to Jerry
Bride.

May 31

(8)

Ran shallow
holes plug in
sand bars. No
colours. Located
old cabin burnt.
Found four old
prospector shafts
No sign of any
major workings
Found some pyrite
in rocks near
lime stone contact.
Some foliation
Found flat rocks with
quartz in it.

JUNE 1 (9)

Took silt & rock samples and returned down to Canyon. Had stayed overnight, discovered one shaft on upper end of Canyon. Had some burnt wood sticking out and a small dump. Panned dump. Found small gold colours

June 27



Returned by boat
back to Jackson
River cañon as
very tired.

Buying samples
crushed some rock
and panned to free
gold but some
pyrite

⑩ CABIN CREEK

JUNE 3, 1994

Went to Joy Cabin
slough for a
general look at
the area by foot.
Dropped off some
gear & A.T.V.

Will be prospecting
the creek running
in. I will call
this Cabin Creek

Returned to Indian
River Cabin

Cabon Creek

AUGEN GWEISS

(A)

JUNE 4

General Prospect
small tributary
upstream from
Cabin Creek, Fred
Stretch stopped for
rock claims here
before he drowned
in river, took
some rock samples

Will call this
Fred Pups
Returned to Indian
River cabin by
boat

June 5

(137)

Returned to Coffin
Creek for further
prospecting. Showing
small gold colonies
near surface.

Returned to Indian
River cabin by
boat.

(14)

June 6

Mechanical failure
to foot motor

Returned to
Lawson City with
spare motor
35 hr. Merc,

June 7



Repairing motor
in Lawson Mt
Alon from Australia
wants to accompany
me for 10 days
as helper and
I have a
Yukon experience
cannot pay him
but will feed
him well for
his help

June 10

(14)

Got more supplies
and went from
Lawson back up
river to Incheon
River Cabin with
boat.

June 11,

(6)

Went up river
from Indian River
Cabin and set
up a camp
on sand bar
in front of Cabin
Creek, This
camp will be
used as a
base camp to
Prospect Cabin
Creek

JUNE 12

(76)

Walked up Cabana
Creek. Discovered
a protruding rock
structure which
appears to be ~~a~~
Auger Lines.

Took rock & silt
samples, Sonnet
in creek and found
a few colours.

June 13, (18)

Cutting trail up
Cobin Creek to get
A.T.U. & small pump
and test sluice to
take sample some
gravel

June 14

Cutting trail for
A. T. W.

June 15

Cutting trail for
P.T. D

June 16

(19)

Found a shorts
type rock structure
with a spring
running out. Water
is very clear &
cold. Found some
old water jugs
Possibly water
was sold to
The paddle wheel
as there is a trail
to it. Will have
water tested. Took
a soil sample

June 17

(20)

Returned to Dawson
by foot as Allen
had things to
do for his trip
home to Australia

June 18

(21)

Stayed in Dawson
crushed and drying
samples to ~~ascertain~~
~~determine~~ & pouring
samples to
determine which
should be assayed

June 29

(22)

Returned to Capin
Creek from Rawson
by river & hauled
more gas & supplies
Camped overnight
on sand bar.

June 20

(23)

Hauling in a pump
and test slices for
with pick shovel
etc. with A.T.V.
Setting up slice
box for testing

JUNE - 21

(24)

General prospected
of Cobin Creek.

Returned to Base
camp on Yukon
River with A.T.U.

25

JUNE 22

Made a trip to
Dawson and back
for more fuel +
some medical
supplies.

June 23

(26)

Shovelling gravel
into test sluice

Returning to base
camp with A.T.V.

JUNE 25

(27)

Shovelling in
gravel after
to go only 3 ft
deep to water
table. Returning to
base camp with
A.T.V.

JUNE 25

(28)

Cleaning and pouring
concentrates from
test slice.

Moved test slice
farther up Cabin
Creek. Returning
to base camp on
Upper River with
A.T.U.

JUNE 26

(29)

Shoveling more
gravel in test
box. Returning to
base camp with
A.T.V.

JUNE 27

35

Shovelling gravel
into test device for
Returning to base
camp with A.T.V

JUNE 28

(37)

Cleaning test slices
for panning
concentrates sorting
and examining garnets
with microscope
Some garnets are
very clear. Gold
is still very fine
Returning to base
camp on Yukon
River with A.T.V.

JUNE 29

Cutting trail
for A.T.V. to move
sluice & pump etc,
further up creek
Returning to base
camp on Yukon
river with A.T.V

JUNE 30

32

Setting up test
sluice box on
upper contact
of ~~metamorph~~ ^{as porphyry} found
some pyrite in
rocks. Returned
to base camp
with A.T.V

July 1

(35)

Shovelling grooves
into ~~the~~ steel
sleece box. Returns
To Base Camp with
A.T.V.

July 2

(34)

Shoveling gravel
into sluice box
Returned to Camp
with Artel

July 3

(35)

Shoveling gravel
into test sluice
box. Returned to
Base Camp with
A.T.V.

(36)

July 4

Cleaned up test
sluice box. Panned
and screened concentrate
still showing fine
gold colour
Returned to base
camp with A.T.W

July 5.

(37)

Moved test sluice
& pump further
up Cabin Creek
to where two
tributaries on
right hand come
together. Set
up box & pump.
Returned to base
camp with ATW

July 6

(38)

shovled gravel
into test sluice
box. Returned to
base camp with
P.T.V.

July 7,

(39)

Shovel gravel
into sluice box
Returned to base
camp with A.T.U.

July 8 (40)

Bear damage to
plastic hose on
pump. Cleaned
up small test
slice. Panned
and screened concentrate
showing gold
micro colours.
Returned to base
Camp with A.T.V.

July 9

(41)

Returned to test
sluce box and
packed everything
up and move
it out to base,
Camp with A.I.D.
Still more ~~for~~
bear signs

July 10 (42)

Took A.T.V. to end
of cut trail, walked
further up Cobin
Creek. General
prospect. ~~with~~
Taking chip samples
etc. Creek is
getting narrow
Returned to Base
Camp

July 11

(43)

Returned up
Coburn creek with
A.T.V. to pup
on right limit.

Had survey map
shows some highs
with lows. Very
hard walking. Took
some samples and
returned to ~~Coburn~~
base camp on river

July 12 (44)

Went up Cabin
Creek to pup on
~~top~~ left limit,
took samples
and returned to
base camp on
Euphon River.

July 13

(45)

Stayed in comp
crushing samples
& screening & panning
to determine which
samples are to
be assayed

July 14

(46)

Stayed at camp
crushing & screening
samples. Panned
out crushed samples
and found some
pyrite but no
free gold.

July 15

(47)

Returned back
up Cabin creek to
area where the
pyritic rocks were
found, Done some
panning & a general
look around.

Ⓡ Took rock &
chip samples &
returned to base
camp.

July 16

48

Bear damage
to tresson A.T.V.
Packed up camp
and loaded A.T.V.
& Chief dog in boat
and went back
to Lawson.

Didn't want to
kill this bear
as project is
about finished
and can return
later.

July 17,

Drove to Whitehorse
to get new tires
for A.T.V., & other
supplies
500 km

July 18

Returned to Hussey
with truck and
repaired bear
damage to P.T. 1
500 km

TEN MILE

July 23 (49)

Went back up
Redupon river to
sixty miles. Dropped
a roll of barb wire
for future camp
at Cabin Crk.

Attempted to go
up sixty mile
to 10 mile creek.
Water is too shallow
for foot motor,
Ranage propeller
on 40 Messon foot
motor, returned
to Indian River Cabin.

July 24

Returned to Rowson
from Indian River
Cabin. Floated to
town as bent
shaft on boat motor
8 hrs

Aug 7, 1994

In Lawson City
getting supplies
& groceries to
go to 10 mile
Creek.

TEN MINE CREEK

^{Dacite}
QUARTZ PORPHYRY
dikes & sills

limestone Breccia
layered Granites

Calcite -

glaucous

Serpentine

AUG 8, 1994

Booked flight
with Bohonza
air 206 to
go to 10 Mile
Creek next morning
Got gas & oil
for generator & A.T.V.
Hauled A.T.V. to
airstrip.

50
AUG 9, 1994

loaded groceries
eggs A.T.V., &
boy (chief) on
airplane and
flew into
Wmule Creek,

Aug 10, 1994

Moved equipment
with A.T.V.
from airstrip to
an old cabin.

Cleaned up cabin
and set it up
as a base.

(51)

Aug 11, 1994

Walked up
Donavon creek
on right limit
of 10 mile creek
for 2 miles.
Took rock samples
and returned to
cabin. Found
a ~~small~~ reddish
rock when up
limestones, probably
hematite (Red & Black)

(52)

AUG 12, 1994

Went with
A. T. V. To next
Pup upstream "2
right limit, Walked
up this pup &
took samples
& returned to
cabin. ~~File~~
9

(53)

Aug 13

Went with A.T.U
to the third
tributary on right
limit walked up
and took ~~some~~
rock & silt samples

AUG 12/

(54)

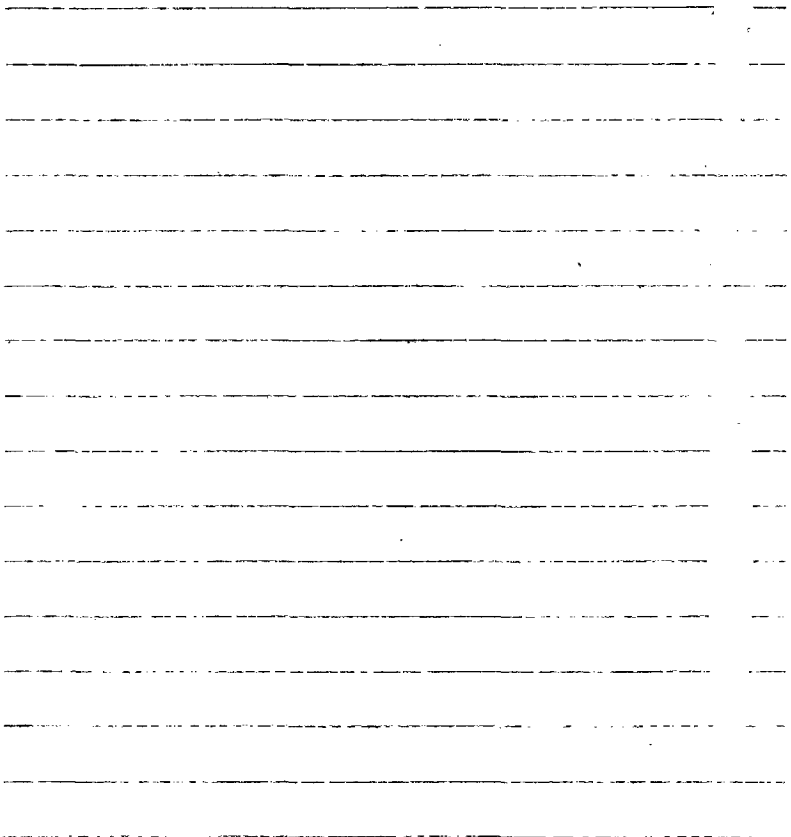
Went with A.T.U
to the fourth
tributary on right
limb of Rensselaer
Creek. Took rock
& silt samples

Aug 15

(55)

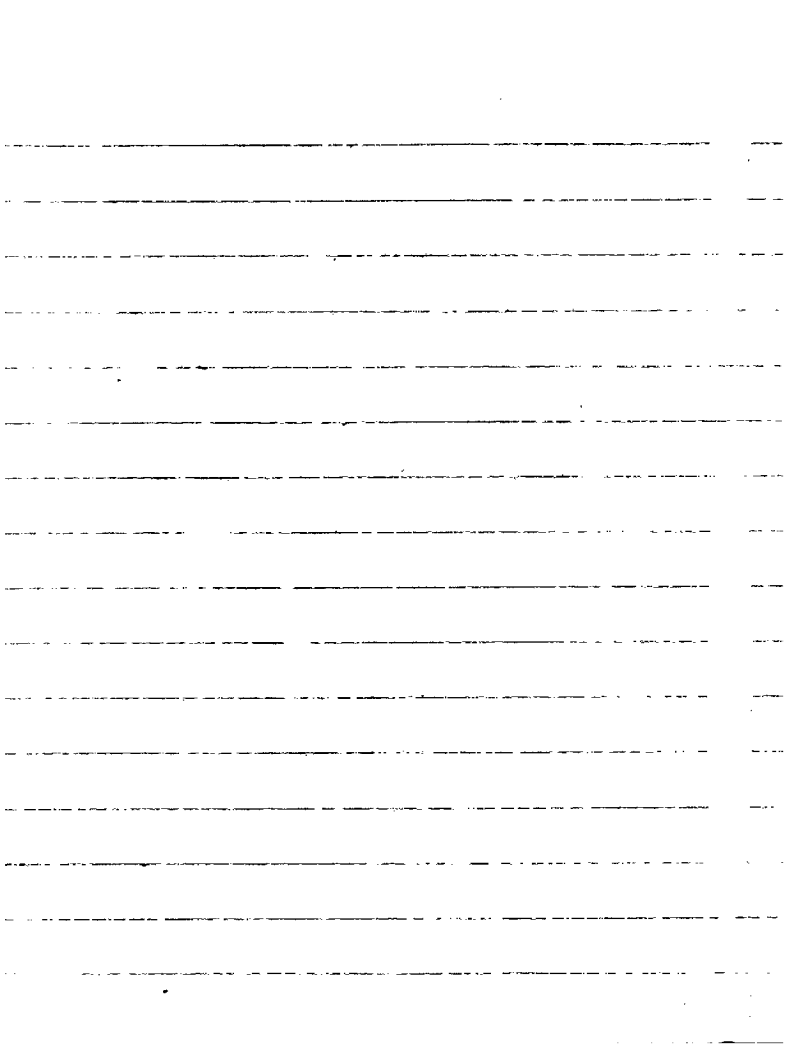
Went with A.T.U
to fifth tributary
on right bank of
10 mile creek.
Took rock & silt
samples, & returned

A greenstone dyke
with pyrite
crosses the gulley
in this area.
Has been recently
opened up by
Placer Miner
John Conter
arseno pyrites



Aug 16 (56)

Went up ~~to~~ the
sixth tributary of
10 mile creek
Took rock & ^{night} ^{limit} ^{limit} ^{limit}
samples & returned
to cabin. ^{with the} A
1 ft float boulder
was found here
containing a
significant amount
of *Halimex*.



Aug 17 (57)

Crushing drying
& screening samples
to determine which
samples will be
best for assays.
Some quartz with
pyrite being
found on upper
10 mile creek,
and in main valley
some fault rocks
were found (SLICKENSHIDE

Aug 18

(58)

Crushing & screening
rock samples.
Assembly test fall
mill to bulk
sample some
rock samples

A generator was
~~obtained~~ rented from
Jordan Gold Richard
Fisherman & Ball
mill cylinder was
adapted to a
cement miller
and plugged into
generator

59

Aug 19

A.T.V

Hauling rock
samples from
Upper 10 mile
Tr Cabin on
Donavon creek
with A.T.V

(60)

Aug 20

AtW

Hauling rock
samples to test
ball mill from
Upper 10 mile to
Donovan Cabin

Aug 30

(61)

Hauling rock samples from creek valley just up from Donovan Creek to Cabin with A. V. U.

Some 2 inch quartz rock veins in schist rock with Galena on edges of quartz.

Some rocks have $\frac{1}{2}$ inch garnets

Aug 31

62

Took samples
1500 ft up from
Donovan creek,
Pockets of fluents
with ^{blocky} quartz breccia
and calcite.

This area ~~is~~ is
faulted next to
a granite intrusive
and limestone.

Typical of a skarn.
Seems to be
some graphite also

Sept 2

(63)

Crushed a sample
from 1500 ft
up from Brown
Ck. Cleaned out
Ball mill & panned
concentrates. Some
fine gold colour
and some silver
grey mineral which
is magnetic was
obtained. This
mineral is malleable
and dissolves in
Nitric Acid.
PALLADIUM T. moyle

Sept 3

(64)

To Cleared & loaded
another sample
from 4500 ft upstream
from Donovan
Creek, This was
done to check
again for contamination.
The rocks were washed
and cleaned.

Sept 4

(65)

Cleaned out ball mill & screened and panned to concentrate. This sample was heavy with pyrites. Used this acid and obtained more free gold and more of the grey mineral which is magnetic & malleable.

Sept 5

(66)

Loaded ball
mill with
pyritic greenstone
from pup's area.
Crushed this rock,
and cleaned ball
mill.

Sept 6

(67)

Screened & panned
to concentrate
and used nitric
acid. No free
gold or grey
minerals in
this sample

Sept 7

(68)

Went back up
with A.T.V to Pup
no. 6, walked 1 mile
up this pup and
found some rusty
Quartz rock with
a pyrite weathering
and leaving a yellow
stain. ~~Also~~ Took
rock samples &
returned to cabin

Sept 8

(69)

Went to pup no 8
with A.T.V. Walked
2 miles up up this
pup to forks.
~~From~~ This area
has several
Quartz Porphyry
dikes. The creek
has large Quorn
Quartz boulders
in it. Some of
the Porphyry rocks
~~have~~ are ~~more~~
mineralised.

Sept 9

(70)

Loaded ball mill
with rocks from
Pup 6 and pulped.
~~Roasted & screened~~
Screened & panned
concentrates. No
free gold.
Cleaned Ball mill.

Sept ~~17~~ 10 (71)

Loaded ball mill
with porphyry rocks
from Pup No. 37
Screened and panned
concentrates. No free
Gold. Cleaned
Ball mill.

Sept 11

(72)

General prospect
of upper ten mile
"Y" creek reach about
tributary. News
~~the~~ old diggings
found. Returned to
bonavon cabin with
P. T. W.

Sept. 12

(73)

Drove some panning
on pep to 7 right
limit on 10 mile
reek. Found some
sparse colours.

Returned to Johnson
Creek Cabin with
Art U

Sept 13

74

Packed up shovel
and ~~pan~~ pan.
* Had some
panning on Sep
14. Returned to
Wanawana cabin

SEPT 14 - 24.

Bulk sampling
rocks from the
Sleeper claims.

~~For~~ Using ball
mill to crush
and pulp rocks.

panning concentrates
screening concentrates.

This was taken
to Rowson & put
over the table at
Bud McKenzie's gold
cleaners. A sizeable
amount was collected.
(Possible contamination?)

Sept 25

(75)

Chartered Bonanza
air from Dawson
to Men White creek
Loaded airplane and
returned to Dawson
city with A.T.C. & Dog
Chief.

Nov 20

Lawson to Whitehorse
to pick up ^{assays} ~~samples~~
~~from Dawson City~~ from
Northern Analytical

Lawson to Whitehorse
300 kilometers

I don't think a
drive to WHT
was necessary
to pick up
Assays

Nov 24

Returned from Whitehorse
to Dawson city
500 km.

Dec 1

Report Preparation

Dec 2

Report preparation

Dec 3

Report preparation,

Daniel Hermanutz 94-055

~~218.78~~
218.78

1541.91

4756.91

1080.00

1000.00

379.00

1600.00

375.00

200.00

3600.00

116328.2

9

YUKON MINING INCENTIVE PROGRAM

DANIEL HERMANUTZ

#94-055

INTRODUCTION

A grassroots grubstake incentive grant for \$10,000 was given by the Yukon Mining Incentive Program. Four prospect locations were listed.

Reindeer Creek- a tributary to the Yukon River ,35 miles upstream from Dawson City.

- A tributary to the Yukon River, 40 miles upstream from Dawson City was also prospected.

- an area 1 mile below the confluence of the 60 Mile River and the Yukon River was not prospected.

-Ten Mile Creek - a tributary to the Sixty Mile River was prospected as proposed.

This summary report will contain the three prospect proposals under separate headings..

1. REINDEER CREEK
2. CABIN CREEK
3. TEN MILE CREEK

REINDEER CREEK

LOCATION	Longitude	139°30'
	Latitude	63°39'

ACCESS - Reindeer Creek runs into the Yukon River 35 miles upstream from Dawson City . A motor boat was used to get supplies and the A.T.V. to the confluence with the Yukon River. From there an old overgrown cat trail goes up and over Reindeer Mountain to the Black Hills road.

GEOLOGY --this creek is located in a Gneissic Granite rock structure bordered by a Gneiss Quartzite with shist and slate. On the upper region some Limestone occurs.

SUMMARY --An A.T.V. was used to travel for 3 miles up the creek. I encountered old cat workings. A canyon with an old shaft on the upper end about 5-6 miles up was found. On the upper end a burnt cabin with four old prospect shafts were found approximately 6-7 miles..On the upper part of the creek

limestone contacts were prospected. On a tributary on the right limit. Some Garnet Hornfels were found as float . A silt sample from this area was taken and assayed. .16 gms^{total} with Pb 3 , Zn 34 , Cu 10 , As 10. Other samples were taken but with basically no major anomalies. This creek has some potential as it has never been drilled or prospected to bedrock since 1947.

CONCLUSIONS AND RECOMMENDATIONS

REINDEER CREEK-

A silt sample taken in the area on the right limit pup in the upper creek valley assaying .16 oz. of gold. Hendersons diary (Yukon Archives) states a prospector in 1947 was making \$4.00 a day hand mining @ \$35.00 per oz. Gold is now \$500.00 per oz. I believe this is the area in which the old prospect shafts were located with the burnt cabin. I would think maybe this should be tested to bedrock. This creek supports a heavy moose population and the creek contains some small grayling. I think the test programs should be done by shafting to bedrock by hand. This area should not be torn up with equipment, until it is proven it can support a proper mining venture..

EXPENSES

13 days @ \$52.85.....	\$687.05
20 ft. boat ...3 days.....	\$150.00
40 hp. motor...3 days.....	\$150.00
A.T.V.....2 days.....	\$300.00
Gas and oil,.....	<u>\$100.00</u>
	\$1387 .05

CABIN CREEK

LOCATION Longitude 139°37'
 Latitude 63°39'

ACCESS --Cabin Creek runs into the Yukon River approximately 40 miles upstream from Dawson City. A motor boat was used to get supplies and the A.T.V. to the confluence with the Yukon River.

GEOLOGY- this creek is located in a Gneissic Granite rock structure. Approximately 2 miles upstream a diorite rock intrusion was found with a clear cold spring. Some old water jugs were found here. A silt sample was taken, containing no Arsenic. Next to this was an outcropping of Augen Gneiss. Some panning was done showing micro fine gold colours. A trail was cut to be able to use the A.T.V. to bring in pump and test sluice boxes. Gravel was shovelled into the test sluice box at several locations on the creek. Concentrates from the test sluice box were panned. All areas prospected 3 ft. down to the water table. Micro fine gold colours were found in all tests. A variety of coloured Garnets were found. Some were green to purple.

A Magnetic Survey Map was purchased in Dawson City. This map shows highs with lows on two tributaries on the right limit.

SUMMARY -- Samples were taken in various locations (silt & rock)
No significant anomalies were taken, but gold was
found in all locations.

CABIN CREEK-

This creek appears to have some potential as gold colors occur in the surface tests..In the early paddle wheeler days this area was used mostly by wood cutters. The creek has no old prospect holes that I could find. A clear spring 2 miles up from the mouth of the creek was used for water , I believe for the paddle wjeeler people. this creek could possibly have been held in the early days for its wood and water potential and was never tested properly for gold. I would think that a bedrock test sould be taken.

EXPENSES

44 days @ \$52.85.....	\$2325.40
20 ft. boat, ...9 days.....	\$ 450.00
40 hp. motor...9 days.....	\$ 450.00
Gas and oil.....	\$ 321.80
A.T.V.....2 weeks.....	\$1000.00
Chain saw....4 days.....	\$ 140.00
1½ in. water pump....5 days.....	<u>\$ 150.00</u>

Att \$4837.20

TEN MILE CREEK

LOCATION Longitude 139°56'
 Latitude 63°32'

ACCESS - Ten Mile Creek runs into the Sixty Mile River six miles upstream from the confluence of the Sixty Mile River and the Yukon River, 50 miles upstream from Dawson City. This creek can be accessed by river only in high water. It has an airstrip (Lambers Field). An overland trail from the Yukon River to 10 mile is used to haul fuel. It is accessed only by cat or A.T.V.

GEOLOGY - Ten Mile Creek is a very complex faulted unit containing various rock structures. There seems to be two granite intrusions. Ten Mile faults in between. A limestone unit or pod contacts the right limit near Donovan Creek. The lower granite unit next to the limestone is altered and folded. A layered igneous rock structure protrudes 1500 ft. upstream from Donovan Creek. It seems to be a type of a skarn. Some of the limestone has been changed to marble and has lenses of pyrite with some green ~~stone~~ ^{hostile} in the fractures. Several andesite dikes cut the granites. The alteration zone changes from granite to a green rock possibly serpentine. Then farther out next to the limestones

is a blue to black brecciated quartz vein. Quartz veins carrying galena on contacts with a blue shist rock with garnets are also located here. Most rocks in this area are highly pyritised. About four miles up from the mouth a green stone dike crosses the valley. It is foliated and carries a lot of arsenopyrites. Slickenside rocks are basically noted in the Donovan Creek area and the upper system which is running along a protruding Granodiorite rock type. Some Quartz porphyry rocks seem to contact in this area back off the creek itself. Several veins cross the valley. Some carry galens and various amounts of gold in the pyrites.

SUMMARY -Ten Mile Creek was prospected using mainly conventional methods - panning, crushing, screening. All tributaries leading off the main Granodiorite intrusions were prospected and sampled. A test ball mill was used to bulk sample rocks. The concentrates were screened and panned. Some free gold was found. A grey malleable metal was found in the rocks near the layered Granite intrusions. It is magnetic and soluble in nitric acid. This metal has not been assayed as yet.. It has the possibility of being one of the Platinum group metals. It will probably be checked in Anchorage some time this winter. The ^{gold}nuggets in this creek go up to 4 oz. They have a worn travelled look with a lot of

quartz. A direction may have been determined and should be followed up. Some of the assays show trace and a bit of gold.

TEN MILE CREEK--

I prospected this area for mainly its Quartz potential. This area was noted in Bostock's report (1935) about two gold bearing veins on the Sixty Mile River and said this area should be further looked into. Some anomalies of gold and galena plus arsenic were found in the upper regions. Two miles up from the mouth of the creek a layered granite intrusion faulting to a breccia. This appears to have some P.G.E. potential. A mining operation below this contact was reported to have found some P.G.E. in the cleanups this summer. Some samples have been taken for assay, but as of now are not completed. If they have an anomaly of P.G.E. metals, this area will have to be trenched.

EXPENSES

36 days, @ 52.85.....	\$1902.60
20 ft. boat.....2 days.....	\$ 100 00
40 hp. motor.....2, days.....	\$ 100.00
A.T.V.....2 weeks.....	\$1000.00
Generator..... <i>Richard Fisher</i>	\$ 500.00
Air travel.....	\$ 545.42
Gas and oil.....	<u>\$ 394.92</u>
	\$4542.94

EXPENSES CONT'D

OTHER

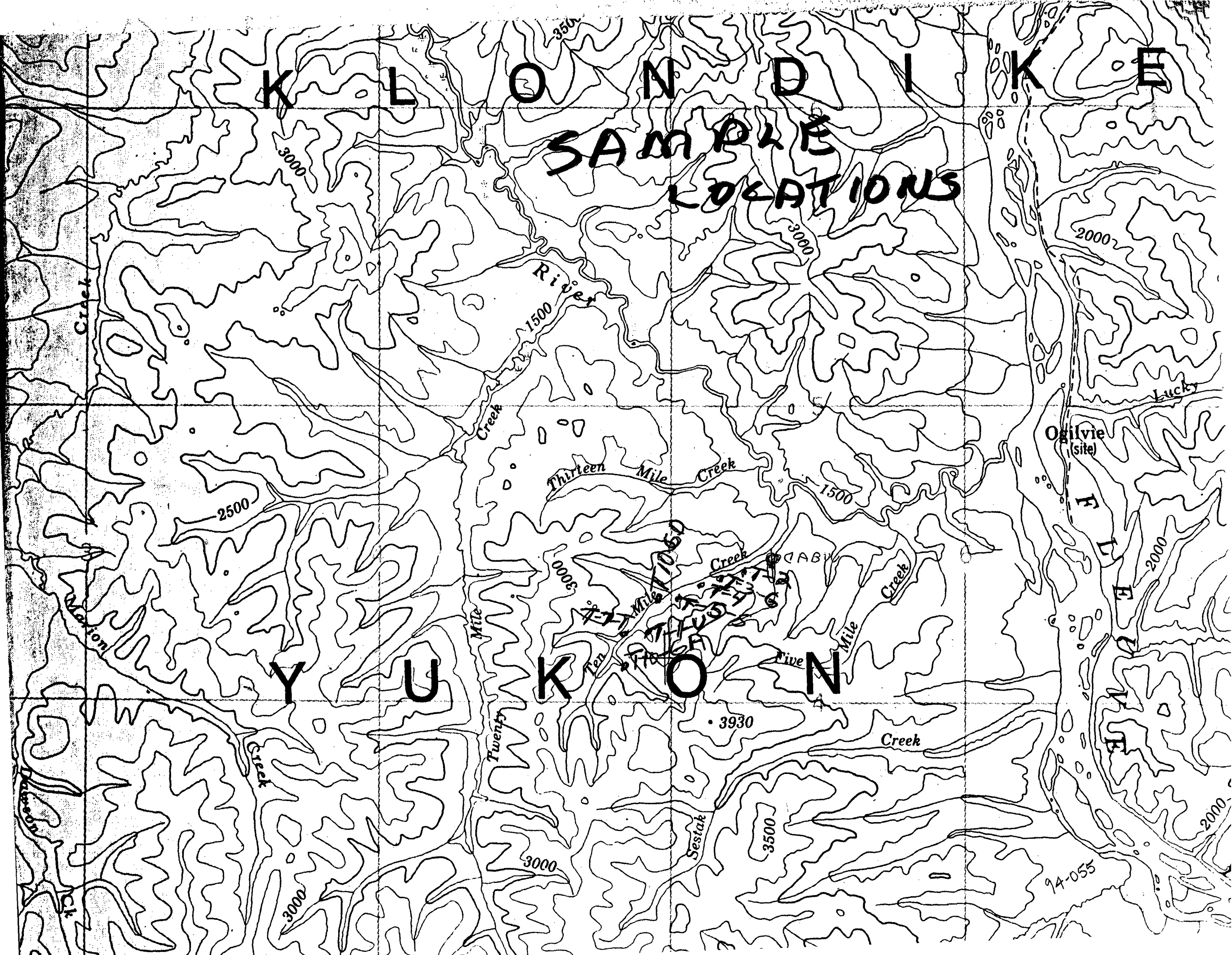
Assays.....	\$ 379.66
SBX 11 radio.....3 mons.	\$ 375.00
Stationary.....	\$ 25.00
Maps.....	\$ 15.00
Typing.....	<u>\$ 150.00</u>
	\$ 944.66
Travel...Half ton truck.....	<u>\$1080.00</u>
	\$2024.66

TOTAL ~~\$13001.63~~

JA \$ 12791.85

KALONDIKE

SAMPLE LOCATIONS



YUKON

94-055

River

Thirteen Mile Creek

Five Mile Creek

Sestak Creek

Twenty Mile Creek

Ten Mile Creek

Ogilvie (site)

Lucky Creek

Creek

Creek

Creek

Creek

ck

ation

3930

3500

3000

3000

2500

3000

3500

3000

2000

2000

2000

1060

110

CABW

18/11/94

Assay Certificate

Page 1

Daniel Hermanutz

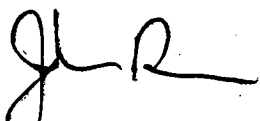
WO#25484

Sample #	Au g/mt	Ag ppm	Cu ppm	Pb ppm	Zn ppm	As ppm	Sb ppm
C-1 SILT	0.02	0.4	9	133	63	61	<1
C-2 SILT	<0.01	0.3	18	73	46	<10	<1
C-3 SILT	0.01	0.1	27	16	56	38	<1
C-4 SILT	<0.01	<0.1	4	20	116	15	<1
C-5 SILT	<0.01	<0.1	48	3	73	<10	<1
C-SP SILT	<0.01	<0.1	16	7	38	<10	<1
RS-1 ROCK	0.03	<0.1	14	5	34	<10	1
RS-2 SILT	<0.01	<0.1	22	4	61	<10	<1
RS-3 SILT	<0.01	<0.1	12	4	48	<10	<1
R-1T ROCK	<0.01	0.3	54	87	48	<10	<1
R-2T ROCK	<0.01	0.1	33	77	92	27	<1
T-1-U ROCK	0.33	1.1	11	34	16	3970	<1
T-2 SILT	<0.01	<0.1	23	9	110	64	<1
T-3-G SILT	<0.01	<0.1	31	24	70	50	<1
T-4 SILT	<0.01	0.1	73	17	78	17	1
T-5-S SILT	0.01	0.5	63	26	99	21	1
RNN-4 SILT	0.16	<0.1	10	3	34	<10	<1
T-10-GA ROCK	0.06	44.8	4	>10000	569	<10	15
T-10-GD ROCK	0.10	0.3	71	122	5	>10000	3

-100 mesh +100 mesh
Au g/mt Au g/mt Total Au g/mt

T-7-T	Rock	<0.01	<0.01	<0.01
-------	------	-------	-------	-------

Certified by



94-055



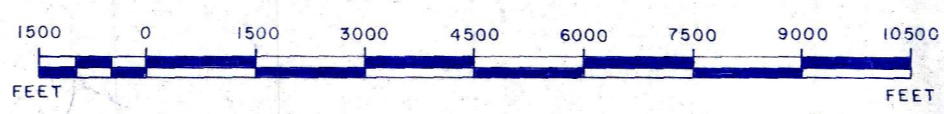
6 SEP 77	21 AUG 78
10 OCT 77	21 JUL 78
13 NOV 77	18 JUN 78
16 DEC 77	15 MAY 78
19 JAN 78	12 APR 78
22 FEB 78	9 MAR 78
25 MAR 78	6 FEB 78
28 APR 78	3 JAN 78
31 MAY 78	31 DEC 77
3 AUG 78	28 NOV 77
11 NOV 78	21 OCT 77
14 DEC 78	18 SEP 77
17 JAN 79	15 AUG 77
20 FEB 79	12 JUL 77
23 MAR 79	9 JUN 77
26 APR 79	6 MAY 77
29 MAY 79	3 APR 77
31 JUN 79	1 JUL 76
3 AUG 79	15 MAY 76
10 SEP 79	12 APR 76
13 OCT 79	9 MAR 76
16 NOV 79	6 FEB 76
19 DEC 79	3 JAN 76
22 JAN 80	31 DEC 75
25 FEB 80	28 NOV 75
28 MAR 80	25 OCT 75
31 APR 80	22 SEP 75
3 MAY 80	19 AUG 75
6 JUN 80	16 JUL 75
9 JUL 80	13 JUN 75
12 AUG 80	10 MAY 75
15 SEP 80	7 APR 75
18 OCT 80	4 MAR 75
21 NOV 80	1 DEC 74
24 DEC 80	18 OCT 74
27 JAN 81	15 SEP 74
30 FEB 81	12 AUG 74
3 MAR 81	9 JUL 74
6 APR 81	6 JUN 74
9 MAY 81	3 MAY 74
12 JUN 81	31 APR 74
15 JUL 81	28 MAR 74
18 AUG 81	25 FEB 74
21 SEP 81	22 JAN 74
24 OCT 81	19 DEC 73
27 NOV 81	16 NOV 73
30 DEC 81	13 OCT 73
31 JAN 82	10 SEP 73
3 FEB 82	7 AUG 73
6 MAR 82	4 JUL 73
9 APR 82	1 MAY 73
12 MAY 82	1 FEB 73
15 JUN 82	31 DEC 72
18 JUL 82	28 NOV 72
21 AUG 82	25 OCT 72
24 SEP 82	22 SEP 72
27 OCT 82	19 AUG 72
30 NOV 82	16 JUL 72
31 DEC 82	13 JUN 72
3 JAN 83	10 MAY 72
6 FEB 83	7 APR 72
9 MAR 83	4 MAR 72
12 APR 83	1 DEC 71
15 MAY 83	18 OCT 71
18 JUN 83	15 SEP 71
21 JUL 83	12 AUG 71
24 AUG 83	9 JUL 71
27 SEP 83	6 JUN 71
30 OCT 83	3 MAY 71
31 NOV 83	31 APR 71
3 DEC 83	28 MAR 71
6 JAN 84	25 FEB 71
9 FEB 84	22 JAN 71
12 MAR 84	19 DEC 70
15 APR 84	16 NOV 70
18 MAY 84	13 OCT 70
21 JUN 84	10 SEP 70
24 JUL 84	7 AUG 70
27 AUG 84	4 JUL 70
30 SEP 84	1 MAY 70
31 OCT 84	31 APR 70
31 NOV 84	28 MAR 70
31 DEC 84	25 FEB 70
31 JAN 85	22 JAN 70
31 FEB 85	19 DEC 69
31 MAR 85	16 NOV 69
31 APR 85	13 OCT 69
31 MAY 85	10 SEP 69
31 JUN 85	7 AUG 69
31 JUL 85	4 JUL 69
31 AUG 85	1 MAY 69
31 SEP 85	31 APR 69
31 OCT 85	28 MAR 69
31 NOV 85	25 FEB 69
31 DEC 85	22 JAN 69
31 JAN 86	19 DEC 68
31 FEB 86	16 NOV 68
31 MAR 86	13 OCT 68
31 APR 86	10 SEP 68
31 MAY 86	7 AUG 68
31 JUN 86	4 JUL 68
31 JUL 86	1 MAY 68
31 AUG 86	31 APR 68
31 SEP 86	28 MAR 68
31 OCT 86	25 FEB 68
31 NOV 86	22 JAN 68
31 DEC 86	19 DEC 67
31 JAN 87	16 NOV 67
31 FEB 87	13 OCT 67
31 MAR 87	10 SEP 67
31 APR 87	7 AUG 67
31 MAY 87	4 JUL 67
31 JUN 87	1 MAY 67
31 JUL 87	31 APR 67
31 AUG 87	28 MAR 67
31 SEP 87	25 FEB 67
31 OCT 87	22 JAN 67
31 NOV 87	19 DEC 66
31 DEC 87	16 NOV 66
31 JAN 88	13 OCT 66
31 FEB 88	10 SEP 66
31 MAR 88	7 AUG 66
31 APR 88	4 JUL 66
31 MAY 88	1 MAY 66
31 JUN 88	31 APR 66
31 JUL 88	28 MAR 66
31 AUG 88	25 FEB 66
31 SEP 88	22 JAN 66
31 OCT 88	19 DEC 65
31 NOV 88	16 NOV 65
31 DEC 88	13 OCT 65
31 JAN 89	10 SEP 65
31 FEB 89	7 AUG 65
31 MAR 89	4 JUL 65
31 APR 89	1 MAY 65
31 MAY 89	31 APR 65
31 JUN 89	28 MAR 65
31 JUL 89	25 FEB 65
31 AUG 89	22 JAN 65
31 SEP 89	19 DEC 64
31 OCT 89	16 NOV 64
31 NOV 89	13 OCT 64
31 DEC 89	10 SEP 64
31 JAN 90	7 AUG 64
31 FEB 90	4 JUL 64
31 MAR 90	1 MAY 64
31 APR 90	31 APR 64
31 MAY 90	28 MAR 64
31 JUN 90	25 FEB 64
31 JUL 90	22 JAN 64
31 AUG 90	19 DEC 63
31 SEP 90	16 NOV 63
31 OCT 90	13 OCT 63
31 NOV 90	10 SEP 63
31 DEC 90	7 AUG 63
31 JAN 91	4 JUL 63
31 FEB 91	1 MAY 63
31 MAR 91	31 APR 63
31 APR 91	28 MAR 63
31 MAY 91	25 FEB 63
31 JUN 91	22 JAN 63
31 JUL 91	19 DEC 62
31 AUG 91	16 NOV 62
31 SEP 91	13 OCT 62
31 OCT 91	10 SEP 62
31 NOV 91	7 AUG 62
31 DEC 91	4 JUL 62
31 JAN 92	1 MAY 62
31 FEB 92	31 APR 62
31 MAR 92	28 MAR 62
31 APR 92	25 FEB 62
31 MAY 92	22 JAN 62
31 JUN 92	19 DEC 61
31 JUL 92	16 NOV 61
31 AUG 92	13 OCT 61
31 SEP 92	10 SEP 61
31 OCT 92	7 AUG 61
31 NOV 92	4 JUL 61
31 DEC 92	1 MAY 61
31 JAN 93	31 APR 61
31 FEB 93	28 MAR 61
31 MAR 93	25 FEB 61
31 APR 93	22 JAN 61
31 MAY 93	19 DEC 60
31 JUN 93	16 NOV 60
31 JUL 93	13 OCT 60
31 AUG 93	10 SEP 60
31 SEP 93	7 AUG 60
31 OCT 93	4 JUL 60
31 NOV 93	1 MAY 60
31 DEC 93	31 APR 60
31 JAN 94	28 MAR 60
31 FEB 94	25 FEB 60
31 MAR 94	22 JAN 60
31 APR 94	19 DEC 59
31 MAY 94	16 NOV 59
31 JUN 94	13 OCT 59
31 JUL 94	10 SEP 59
31 AUG 94	7 AUG 59
31 SEP 94	4 JUL 59
31 OCT 94	1 MAY 59
31 NOV 94	31 APR 59
31 DEC 94	28 MAR 59
31 JAN 95	25 FEB 59
31 FEB 95	22 JAN 59
31 MAR 95	19 DEC 58
31 APR 95	16 NOV 58
31 MAY 95	13 OCT 58
31 JUN 95	10 SEP 58
31 JUL 95	7 AUG 58
31 AUG 95	4 JUL 58
31 SEP 95	1 MAY 58
31 OCT 95	31 APR 58
31 NOV 95	28 MAR 58
31 DEC 95	25 FEB 58
31 JAN 96	22 JAN 58
31 FEB 96	19 DEC 57
31 MAR 96	16 NOV 57
31 APR 96	13 OCT 57
31 MAY 96	10 SEP 57
31 JUN 96	7 AUG 57
31 JUL 96	4 JUL 57
31 AUG 96	1 MAY 57
31 SEP 96	31 APR 57
31 OCT 96	28 MAR 57
31 NOV 96	25 FEB 57
31 DEC 96	22 JAN 57
31 JAN 97	19 DEC 56
31 FEB 97	16 NOV 56
31 MAR 97	13 OCT 56
31 APR 97	10 SEP 56
31 MAY 97	7 AUG 56
31 JUN 97	4 JUL 56
31 JUL 97	1 MAY 56
31 AUG 97	31 APR 56
31 SEP 97	28 MAR 56
31 OCT 97	25 FEB 56
31 NOV 97	22 JAN 56
31 DEC 97	19 DEC 55
31 JAN 98	16 NOV 55
31 FEB 98	13 OCT 55
31 MAR 98	10 SEP 55
31 APR 98	7 AUG 55
31 MAY 98	4 JUL 55
31 JUN 98	1 MAY 55
31 JUL 98	31 APR 55
31 AUG 98	28 MAR 55
31 SEP 98	25 FEB 55
31 OCT 98	22 JAN 55
31 NOV 98	19 DEC 54
31 DEC 98	16 NOV 54
31 JAN 99	13 OCT 54
31 FEB 99	10 SEP 54
31 MAR 99	7 AUG 54
31 APR 99	4 JUL 54
31 MAY 99	1 MAY 54
31 JUN 99	31 APR 54
31 JUL 99	28 MAR 54
31 AUG 99	25 FEB 54
31 SEP 99	22 JAN 54
31 OCT 99	19 DEC 53
31 NOV 99	16 NOV 53
31 DEC 99	13 OCT 53
31 JAN 00	10 SEP 53
31 FEB 00	7 AUG 53
31 MAR 00	4 JUL 53
31 APR 00	1 MAY 53
31 MAY 00	31 APR 53
31 JUN 00	28 MAR 53
31 JUL 00	25 FEB 53
31 AUG 00	22 JAN 53
31 SEP 00	19 DEC 52
31 OCT 00	16 NOV 52
31 NOV 00	13 OCT 52
31 DEC 00	10 SEP 52
31 JAN 01	7 AUG 52
31 FEB 01	4 JUL 52
31 MAR 01	1 MAY 52
31 APR 01	31 APR 52
31 MAY 01	28 MAR 52
31 JUN 01	25 FEB 52
31 JUL 01	22 JAN 52
31 AUG 01	19 DEC 51
31 SEP 01	16 NOV 51
31 OCT 01	13 OCT 51
31 NOV 01	10 SEP 51
31 DEC 01	7 AUG 51
31 JAN 02	4 JUL 51
31 FEB 02	1 MAY 51
31 MAR 02	31 APR 51
31 APR 02	28 MAR 51
31 MAY 02	25 FEB 51
31 JUN 02	22 JAN 51
31 JUL 02	19 DEC 50
31 AUG 02	16 NOV 50
31 SEP 02	13 OCT 50
31 OCT 02	10 SEP 50
31 NOV 02	7 AUG 50
31 DEC 02	4 JUL 50
31 JAN 03	1 MAY 50
31 FEB 03	31 APR 50
31 MAR 03	28 MAR 50
31 APR 03	25 FEB 50
31 MAY 03	22 JAN 50
31 JUN 03	19 DEC 49
31 JUL 03	16 NOV 49
31 AUG 03	13 OCT 49
31 SEP 03	10 SEP 49
31 OCT 03	7 AUG 49
31 NOV 03	4 JUL 49
31 DEC 03	1 MAY 49
31 JAN 04	31 APR 49
31 FEB 04	28 MAR 49
31 MAR 04	25 FEB 49
31 APR 04	22 JAN 49
31 MAY 04	19 DEC 48
31 JUN 04	16 NOV 48
31 JUL 04	13 OCT 48
31 AUG 04	10 SEP 48
31 SEP 04	7 AUG 48
31 OCT 04	4 JUL 48
31 NOV 04	1 MAY 48
31 DEC 04	31 APR 48
31 JAN 05	28 MAR 48
31 FEB 05	25 FEB 48
31 MAR 05	22 JAN 48
31 APR 05	19 DEC 47
31 MAY 05	16 NOV 47
31 JUN 05	13 OCT 47
31 JUL 05	10 SEP 47
31 AUG 05	7 AUG 47
31 SEP 05	4 JUL 47
31 OCT 05	1 MAY 47
31 NOV 05	31 APR 47
31 DEC 05	28 MAR 47
31 JAN 06	25 FEB 47
31 FEB 06	22 JAN 47
31 MAR 06	19 DEC 46
31 APR 06	16 NOV 46
31 MAY 06	13 OCT 46
31 JUN 06	10 SEP 46
31 JUL 06	7 AUG 46
31 AUG 06	4 JUL 46
31 SEP 06	1 MAY 46
31 OCT 06	31 APR 46
31 NOV 06	28 MAR 46
31 DEC 06	25 FEB 46
31 JAN 07	22 JAN 46
31 FEB 07	19 DEC 45
31 MAR 07	16 NOV 45
31 APR 07	13 OCT 45
31 MAY 07	10 SEP 45
31 JUN 07	7 AUG 45
31 JUL 07	4 JUL 45
31 AUG 07	1 MAY 45
31 SEP 07	31 APR 45
31 OCT 07	28 MAR 45
31 NOV 07	25 FEB 45
31 DEC 07	22 JAN 45
31 JAN 08	19 DEC 44
31 FEB 08	16 NOV 44
31 MAR 08	13 OCT 44
31 APR 08	10 SEP 44
31 MAY 08	7 AUG 44
31 JUN 08	4 JUL 44
31 JUL 08	1 MAY 44
31 AUG 08	31 APR 44
31 SEP 08	28 MAR 44
31 OCT 08	25 FEB 44
31 NOV 08	22 JAN 44
31 DEC 08	19 DEC 43
31 JAN 09	16 NOV 43
31 FEB 09	13 OCT 43
31 MAR 09	10 SEP 43
31 APR 09	7 AUG 43
31 MAY 09	4 JUL 43
31 JUN 09	1 MAY 43
31 JUL 09	31 APR 43
31 AUG 09	28 MAR 43
31 SEP 09	25 FEB 43
31 OCT 09	22 JAN 43
31 NOV 09	19 DEC 42
31 DEC 09	16 NOV 42
31 JAN 10	13 OCT 42
31 FEB 10	10 SEP 42
31 MAR 10	7 AUG 42
31 APR 10	4 JUL 42
31 MAY 10	1 MAY 42
31 JUN 10	31 APR 42
31 JUL 10	28 MAR 42
31 AUG 10	25 FEB 42
31 SEP 10	22 JAN 42
31 OCT 10	19 DEC 41
31 NOV 10	16 NOV 41
31 DEC 10	13 OCT 41
31 JAN 11	10 SEP 41
31 FEB 11	7 AUG 41
31 MAR 11	4 JUL 41
31 APR 11	1 MAY 41
31 MAY 11	31 APR 41
31 JUN 11	28 MAR 41
31 JUL 11	25 FEB 41
31 AUG 11	22 JAN 41
31 SEP 11	19 DEC 40
31 OCT 11	16 NOV 40
31 NOV 11	13 OCT 40
31 DEC 11	10 SEP 40
31 JAN 12	7 AUG 40
31 FEB 12	4 JUL 40
31 MAR 12	1 MAY 40
31 APR 12	31 APR 40
31 MAY 12	28 MAR 40
31 JUN 12	25 FEB 40
31 JUL 12	22 JAN 40
31 AUG 12	19 DEC 39
31 SEP 12	16 NOV 39
31 OCT 12	13 OCT 39
31 NOV 12	10 SEP 39
31 DEC 12	7 AUG 39
31 JAN 13	4 JUL 39
31 FEB 13	1 MAY 39
31 MAR 13	31 APR 39
31 APR 13	28 MAR 39
31 MAY 13	25 FEB 39
31 JUN 13	22 JAN 39
31 JUL 13	19 DEC 38
31 AUG 13	16 NOV 38
31 SEP 13	13 OCT 38
31 OCT 13	10 SEP 38
31 NOV 13	7 AUG 38
31 DEC 13	4 JUL 38
31 JAN 14	1 MAY 38
31 FEB 14	31 APR 38
31 MAR 14	28 MAR 38
31 APR 14	25 FEB 38
31 MAY 14	22 JAN 38
31 JUN 14	19 DEC 37
31 JUL 14	16 NOV 37
31 AUG 14	13 OCT 37
31 SEP 14	10 SEP 37
31 OCT 14	7 AUG 37
31 NOV 14	4 JUL 37
31 DEC 14	1 MAY 37
31 JAN 15	31 APR 37
31 FEB 15	28 MAR 37
31 MAR 15	25 FEB 37
31 APR 15	22 JAN 37
31 MAY 15	19 DEC 36
31 JUN 15	16 NOV 36
31 JUL 15	13 OCT 36
31 AUG 15	10 SEP 36
31 SEP 15	7 AUG 36
31 OCT 15	4 JUL 36
31 NOV 15	1 MAY 36
31 DEC 15	31 APR 36
31 JAN 16	28 MAR 36
31 FEB 16	25 FEB 36
31 MAR 16	

SHEET 1150-12

QUARTZ & PLACER

LATITUDE 63°30' to 63°45'
 LONGITUDE 139°30' to 140°00'

SCALE 1:31,680



ISSUED UNDER THE AUTHORITY OF THE MINISTER OF INDIAN AFFAIRS AND NORTHERN DEVELOPMENT

NOTICE

THIS MAP IS ISSUED AS A PRELIMINARY GUIDE FOR WHICH THE DEPARTMENT OF INDIAN AFFAIRS AND NORTHERN DEVELOPMENT WILL ACCEPT NO RESPONSIBILITY FOR ANY ERRORS, INACCURACIES OR OMISSIONS WHATSOEVER.

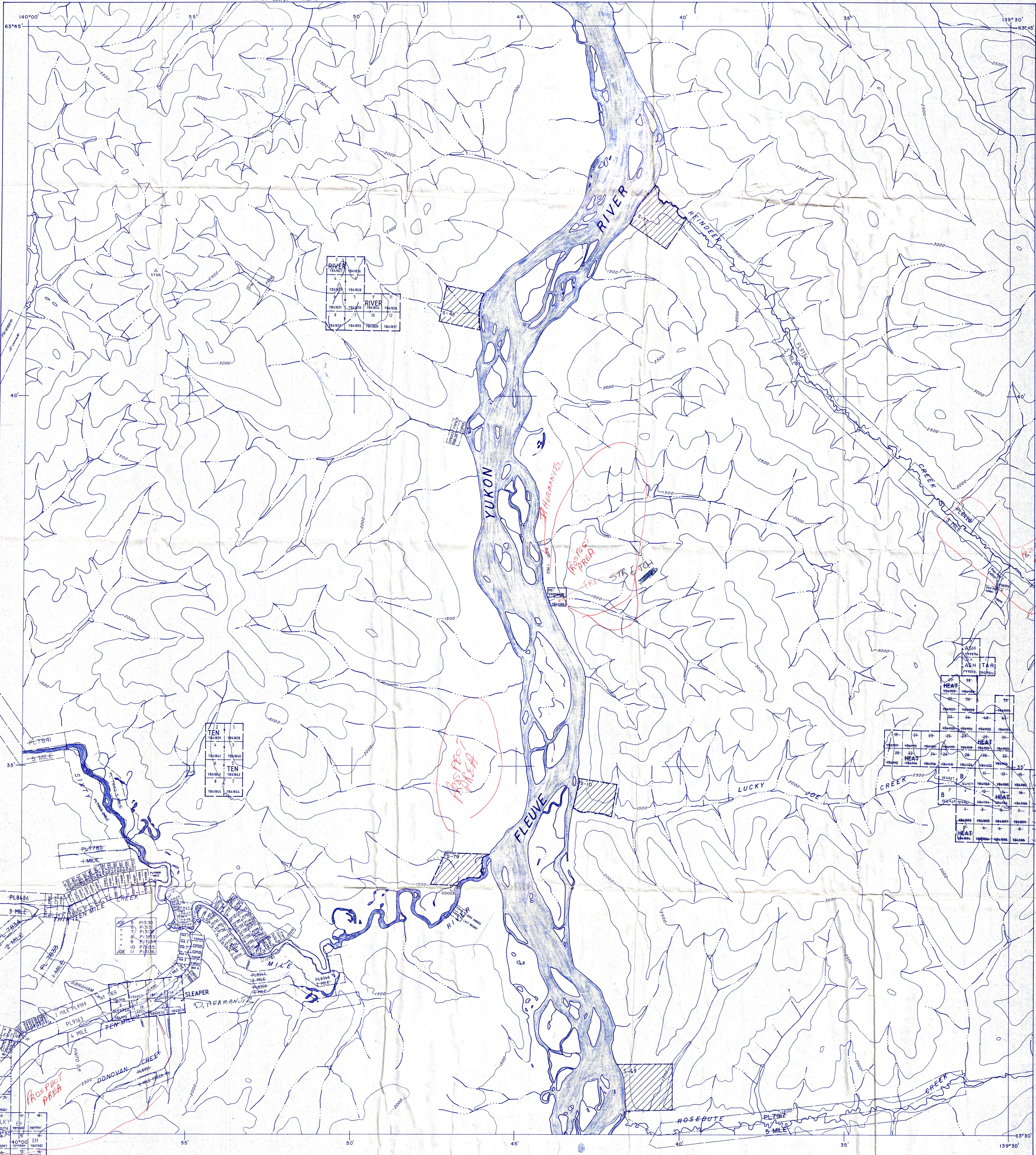
TOPOGRAPHY COMPILED FROM 1:50,000 NATIONAL TOPOGRAPHIC SERIES. CONTOUR INTERVAL 500 FEET. SURVEY INFORMATION COMPILED FROM NBGL SURVEYS, BY DRAFTING SERVICES.

Note: Entry on certain lands is withdrawn from staking in cross-hatched areas to facilitate the settlement of Native Land Claims without prejudice to Existing Surface and Subsurface Rights.

115-N-16	115-O-13	115-O-14
115-N-9	115-O-12	115-O-11
115-N-8	115-O-5	115-O-6



12 MAR 84
 19 MAY 80
 10 APR 74
 DAWSON 19 MAY 65
 11 OCT 93



14 FEB 94
 15 MAR 94
 16 APR 94
 17 MAY 94
 18 JUN 94
 19 JUL 94
 20 AUG 94
 21 SEP 94
 22 OCT 94
 23 NOV 94
 24 DEC 94
 25 JAN 95
 26 FEB 95
 27 MAR 95
 28 APR 95
 29 MAY 95
 30 JUN 95
 31 JUL 95
 31 AUG 95
 31 SEP 95
 31 OCT 95
 31 NOV 95
 31 DEC 95
 27 AUG 94
 28 JUN 94
 12 MAR 95

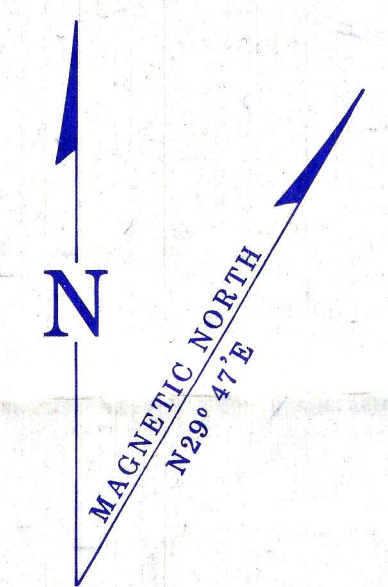
115G-11
QUARTZ & PLACER

LATITUDE 61° 30' TO 61° 45'
 LONGITUDE 139° 00' TO 139° 30'

ISSUED UNDER THE AUTHORITY OF THE MINISTER
 OF
 INDIAN AFFAIRS AND NORTHERN DEVELOPMENT

SCALE 1:30,000

METRES 0 1000 2000
 FEET 0 1000 2000

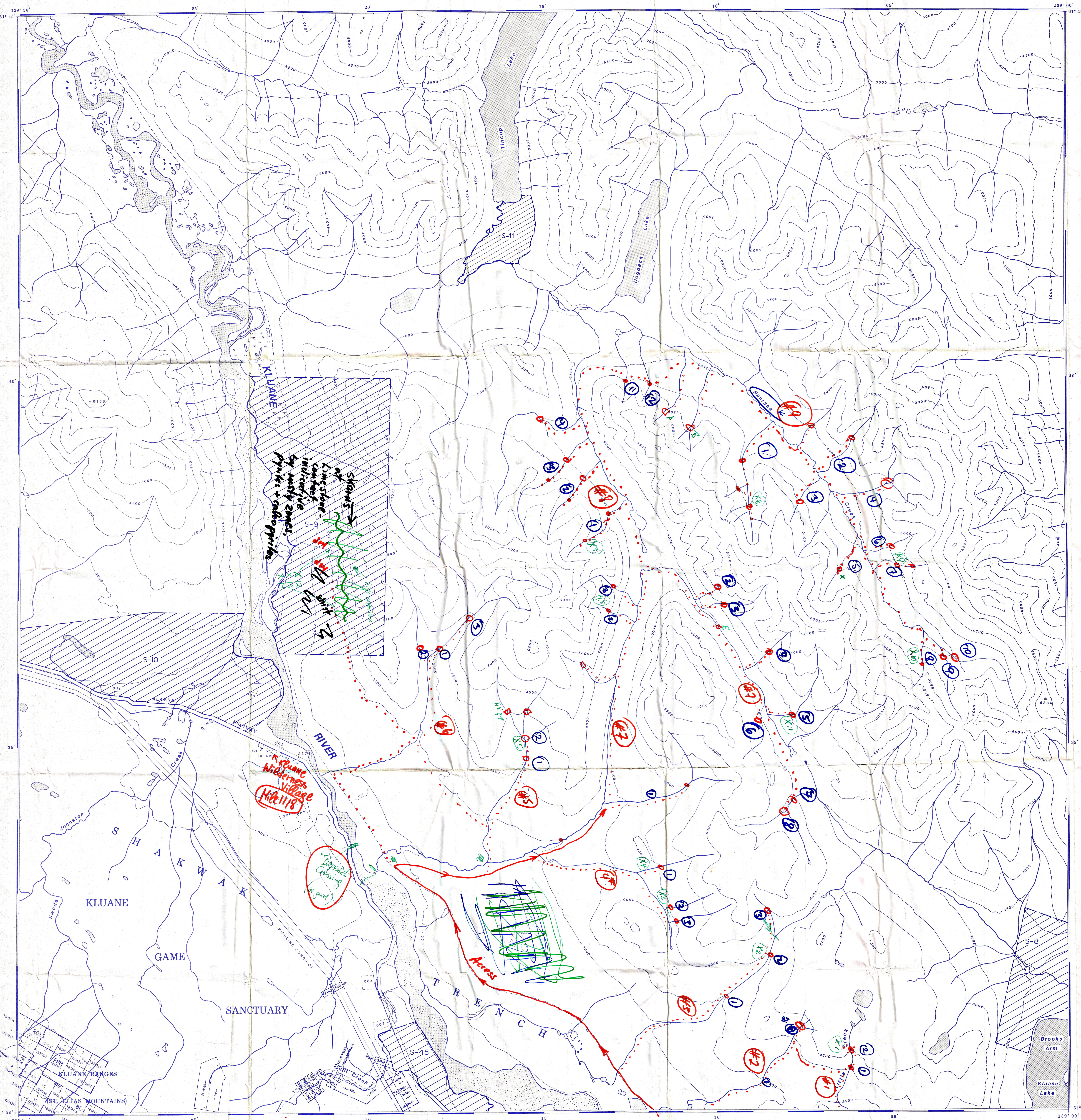


NOTE:
 THIS MAP IS ISSUED AS A PRELIMINARY GUIDE FOR WHICH THE DEPARTMENT OF INDIAN AFFAIRS AND NORTHERN DEVELOPMENT WILL ACCEPT NO RESPONSIBILITY FOR ANY ERRORS, INACCURACIES OR OMISSIONS WHATSOEVER.

TOPOGRAPHY COMPILED FROM 1:50,000 NATIONAL TOPOGRAPHIC SERIES. CONTOUR INTERVAL 500 FEET. SURVEY INFORMATION COMPILED FROM LEGAL SURVEYS, BY DRAFTING SERVICES.

Note: Entry on certain lands is withdrawn from staking in cross-hatched areas to facilitate the settlement of Native Land Claims without prejudice to Existing Surface and Subsurface Rights.

115G-13	115G-14	115G-15
115G-12	115G-11	115G-10
115G-5	115G-6	115G-7



- Red face -
- staking
- # for pop
- # for coal
- trail
- samples

Handwritten notes:
 Access
 Trail
 Kluane Wilderness Village
 Mile 118

TRAVEL MAP

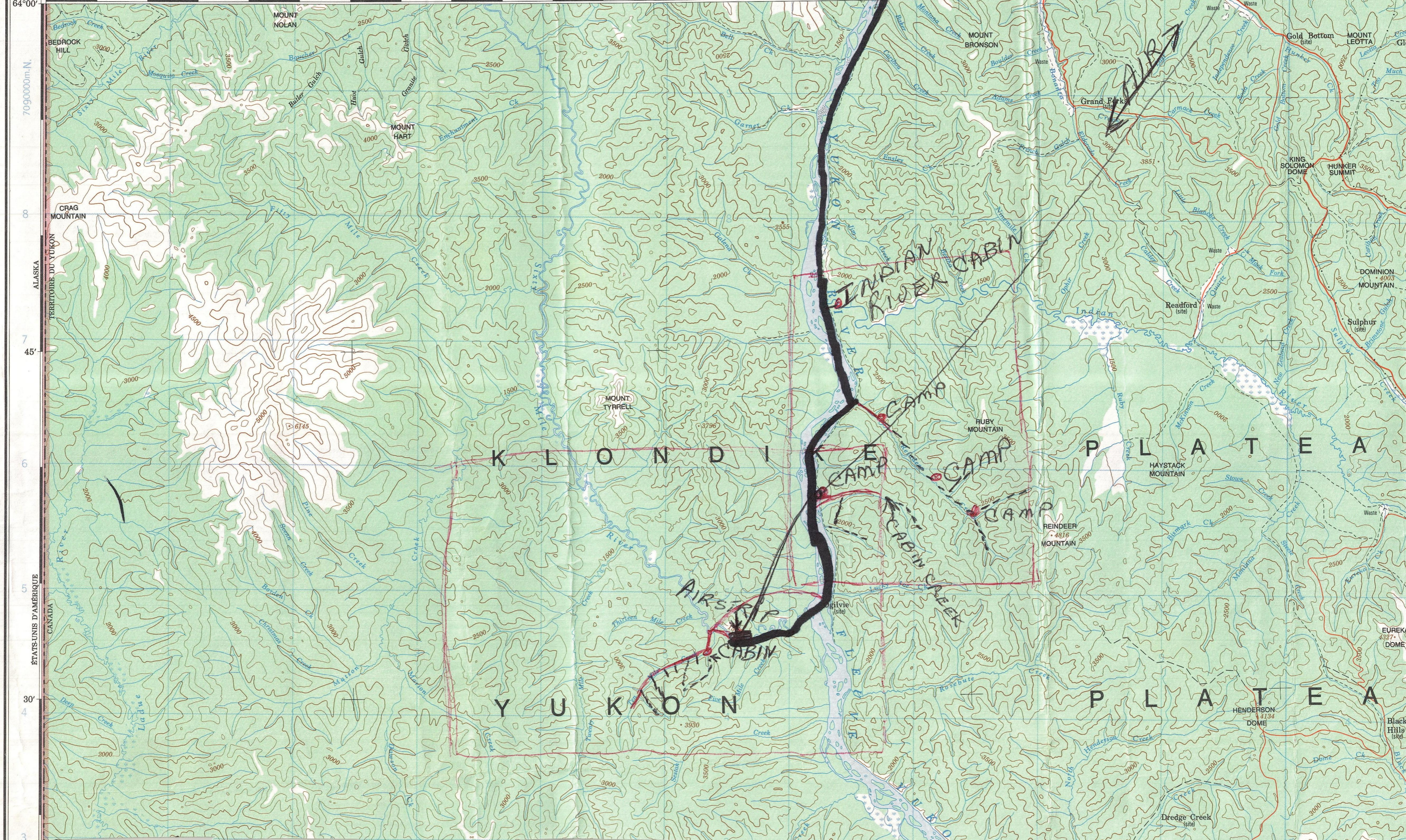
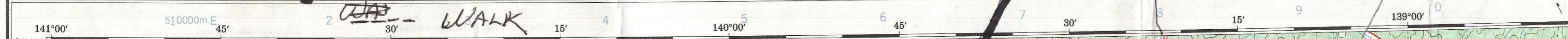
115-0 & 115 N

- BOAT & MOTOR
- A.T.V
- AIRPLANE
- WALK

MAP INSERT

Canada

DAWSON AIRPORT
94-055



K L O N D I K E P L A T E A U

Y U K O N P L A T E A U

INDIAN RIVER CABIN

AIRSTIP CABIN

CAMP
CAMP
CAMP

64°00'
7090000m.N.
8
45'
6
5
30'

510000m.E

2

30'

4

15'

5

140°00'

6

45'

7

30'

8

15'

9

139°00'

0

Dawson 39