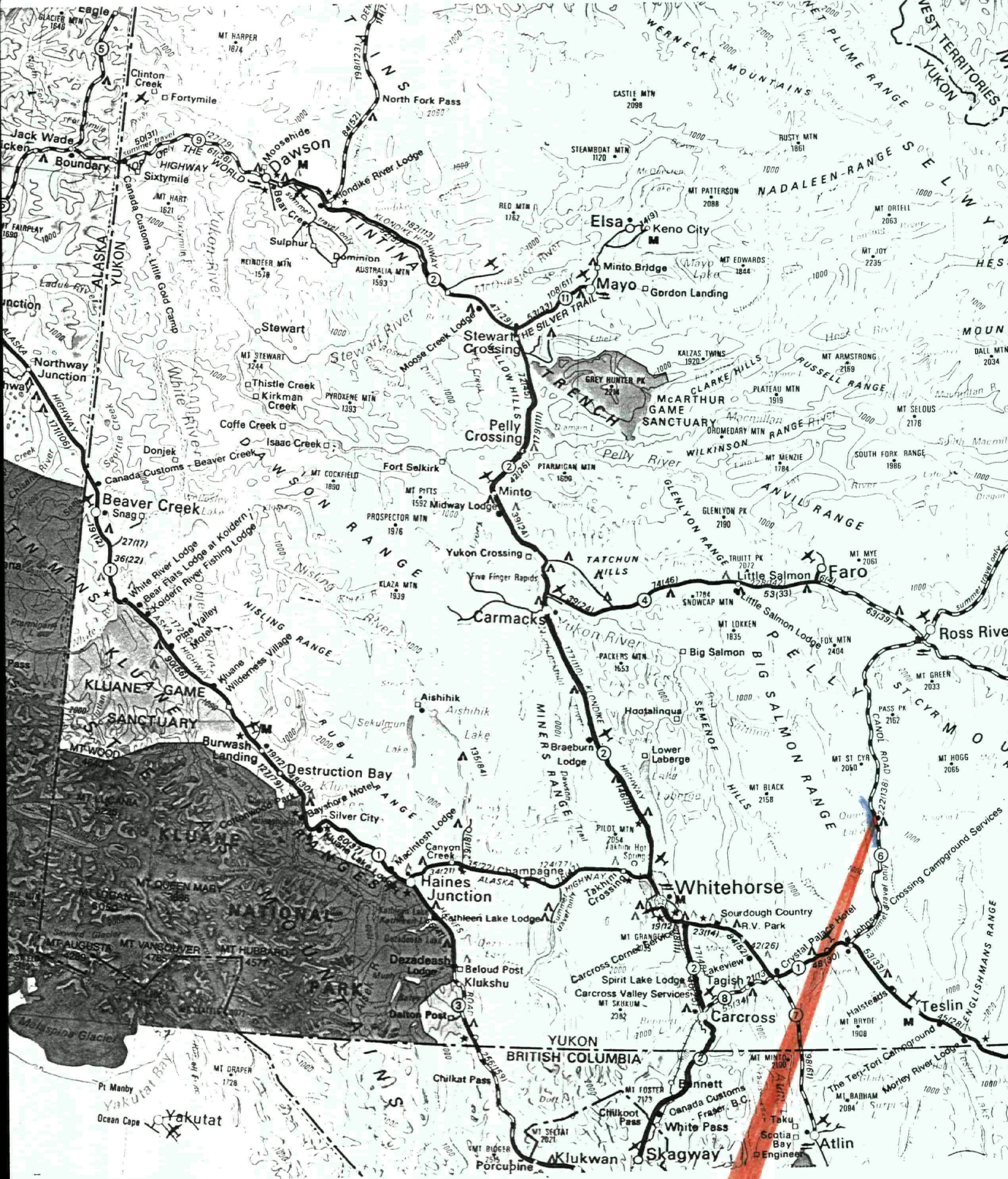


The Lynx Showing
By: Paul R. Malkin

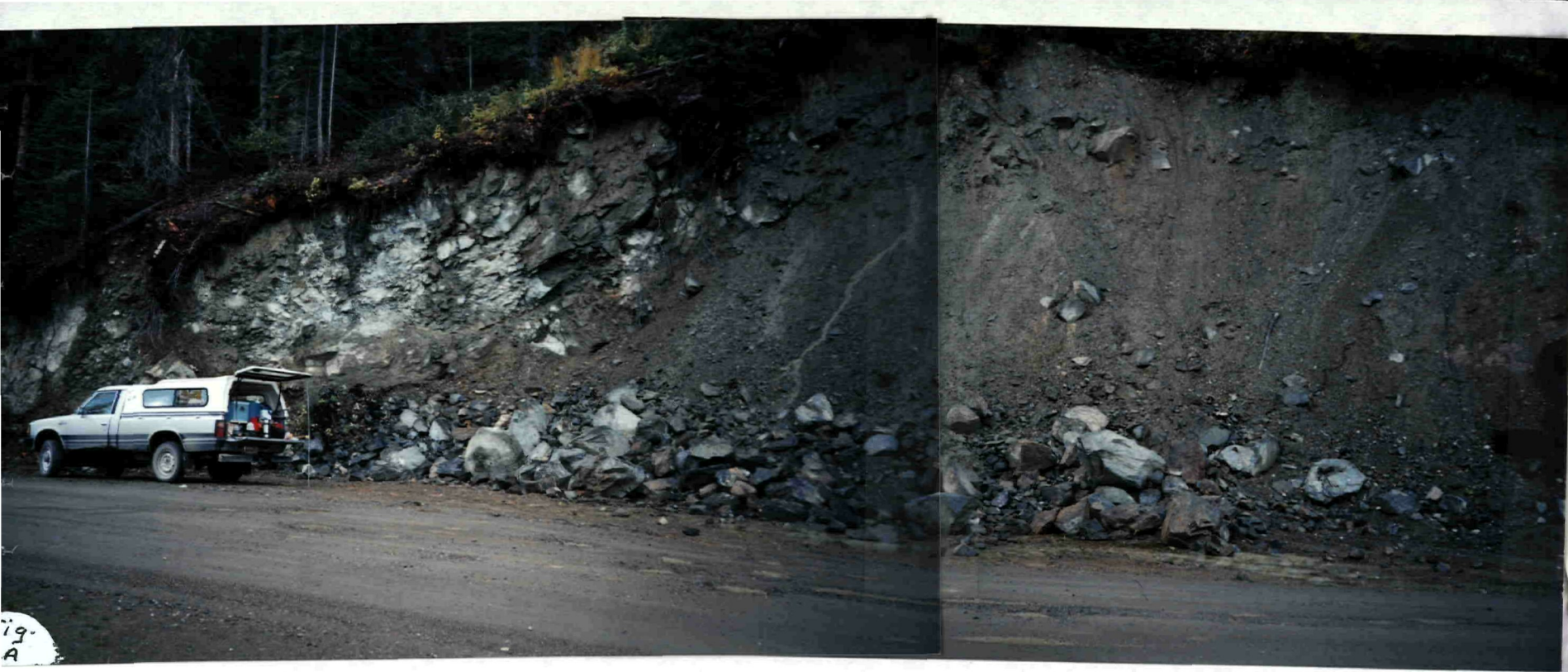
94-067



LYNX

The Lynx Showing





Lynx Showing (Fig. A)

NTS 105 F-3

Lat. $61^{\circ}06'N$ Long. $133^{\circ}03'W$

The Lynx Showing is situated at approximately km 94.5 on the east side of the South Canol road. In this area the South Canol road winds along the east side of Quiet Lake. In this area (fig. A) it is 300m east of the lake at an elevation of approximately 100m above the lake at 900m above sea level. (map # Lynx Location)



The Lynx Project

Lynx Showing

NTS 105 F-3

Lat 61° 06

Long 133° 03

Watson Lake Mining District

The Lynx Showing is approximately 125 air kilometers northeast of Whitehorse in the Yukon Territory, situated at km 94 of the South Canal road at Quiet Lake. At this point the South Canal follows the east shore of Quiet Lake, the road climbs away from the lake (300m away). The road climbs some 100m above the lake to 900m elevation and then drops down again as it heads north. It is at its highest point that the Ministry of Transport has taken out rock from the east side of the road (see fig A)

My first observation of this structure was on 25 July of this prospecting season. At that time we spent four days gathering rock and soil samples and doing some recon of the immediate area. I went back on October 3rd to re-evaluate the area on my own (since my partner had departed the Yukon in early August)

The Quiet Lake area in the vicinity of the Lynx Showing is said to be underlain by a group of thrust faults (Templeman-Kluit). The country rock is andisite volcanics of the Anvil-Campbell allochthonous assemblage dark green, massive aphanitic basalt and minor augite porphyry (Templeman-Kluit) (see fig B). The immediate area of the Lynx Showing is very faulted and sheared. This faulting and shearing dips gently to the east (see fig C & fig D)



(Fig. B)- Lynx Showing country rock dark green volcanic massive aphitic basalt (Templeman-Kluit)

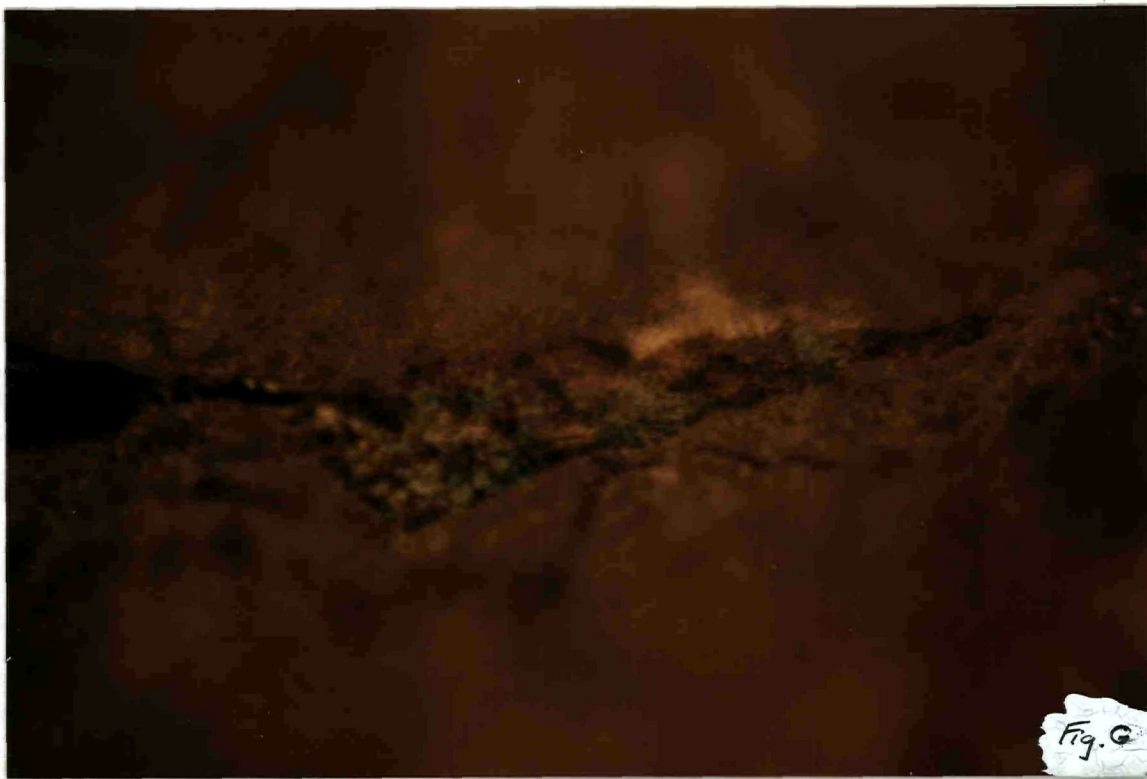


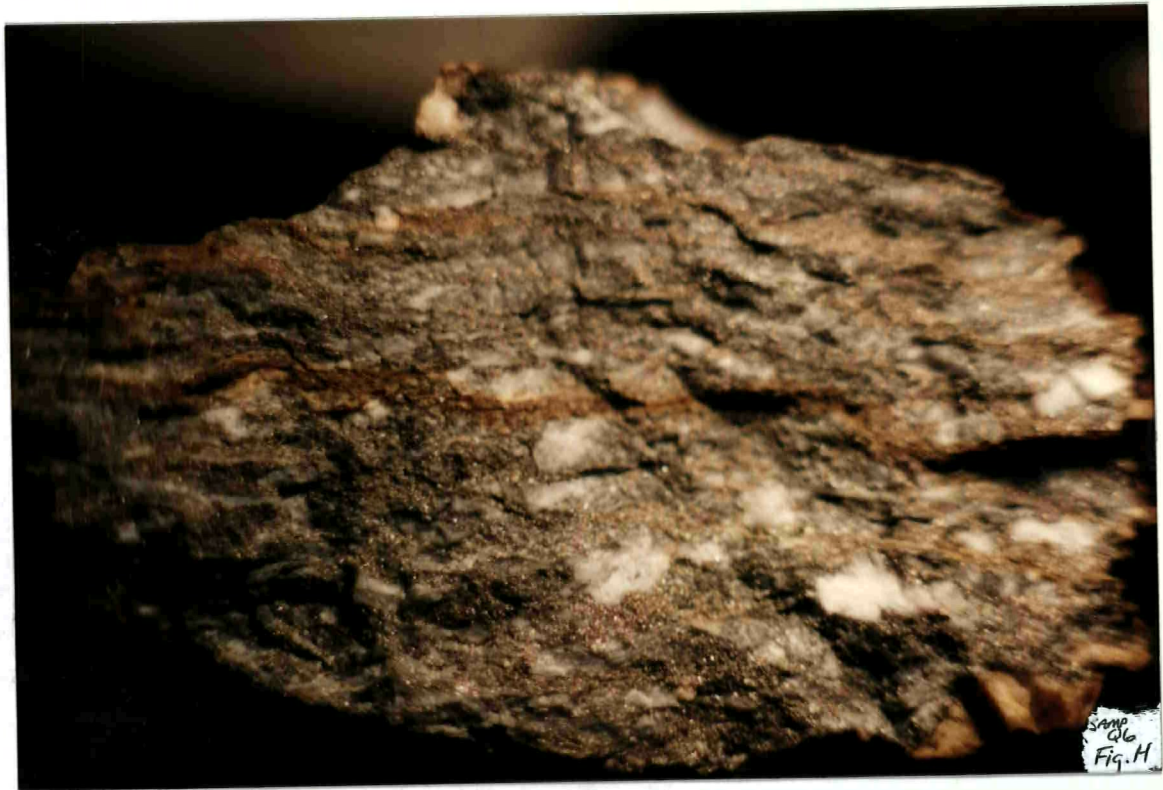
(Fig. C)- shearing at Lynx Showing



(Fig. D)- Gossan in shear zone

The country rock around the Lynx Showing (see fig. F) is a very competent, resistant, massive dark green aphanitic basalt. Some has been under deformation causing foliation with malicite staining along some foliations and joints. (see fig. G)





Sample Q6 is a highly mineralized foliated specimen. (see Q6 fig. H)
I believe it came from the same shear zone as samples A_s, B_s, C_s, and D_s.
(See assay results 1PL 94K 2504). Sample Q7 was also dug out of this shear
or alteration zone. This rock is very siliceous and vuggy. (see fig. I)



Siliceous, Vuggy and Mineralized is (samp. Q-7)-fig.I - fig. J





(Fig. E)- Locations of anomolous samples. S after letter stands for soil. Q samples are rock. Q7 is in place; Q6 is a gneissic, foliated sulphide sample. The distance between point A & B is 70m.



Conclusion

As there are very few mineral occurrences on this map sheet (105 F-3), I believe that this showing deserves further investigation. First by exposing more of the mineralized zone at the showing itself; as well, along strike mostly south of the showing I have many soil and rock samples yet to be assayed as funds become available. Soils should be taken from the lake shore encompassing the area north and south of the showing with a grid. (see map Lynx 95) The area east of the showing at an elevation of 4000' is of interest as a large talus cliff (see fig. K) and air photo (fig. L) this area was inaccessible this fall due to ice and snow on rocks. I may add at this time that the whole Quiet Lake area becomes an armed camp during hunting season which causes great concern while working in the bush in this area. Next season I hope to be on the ground (Lynx) as soon as the road is open. Thanks to all, Paul R. Malkin



(Fig. K) - Looking south down Quiet Lake towards Lynx Showing geography

Fig 1



X 100

SMALL

0-29
A27175-227

24/11/94

Assay Certificate

Page 1

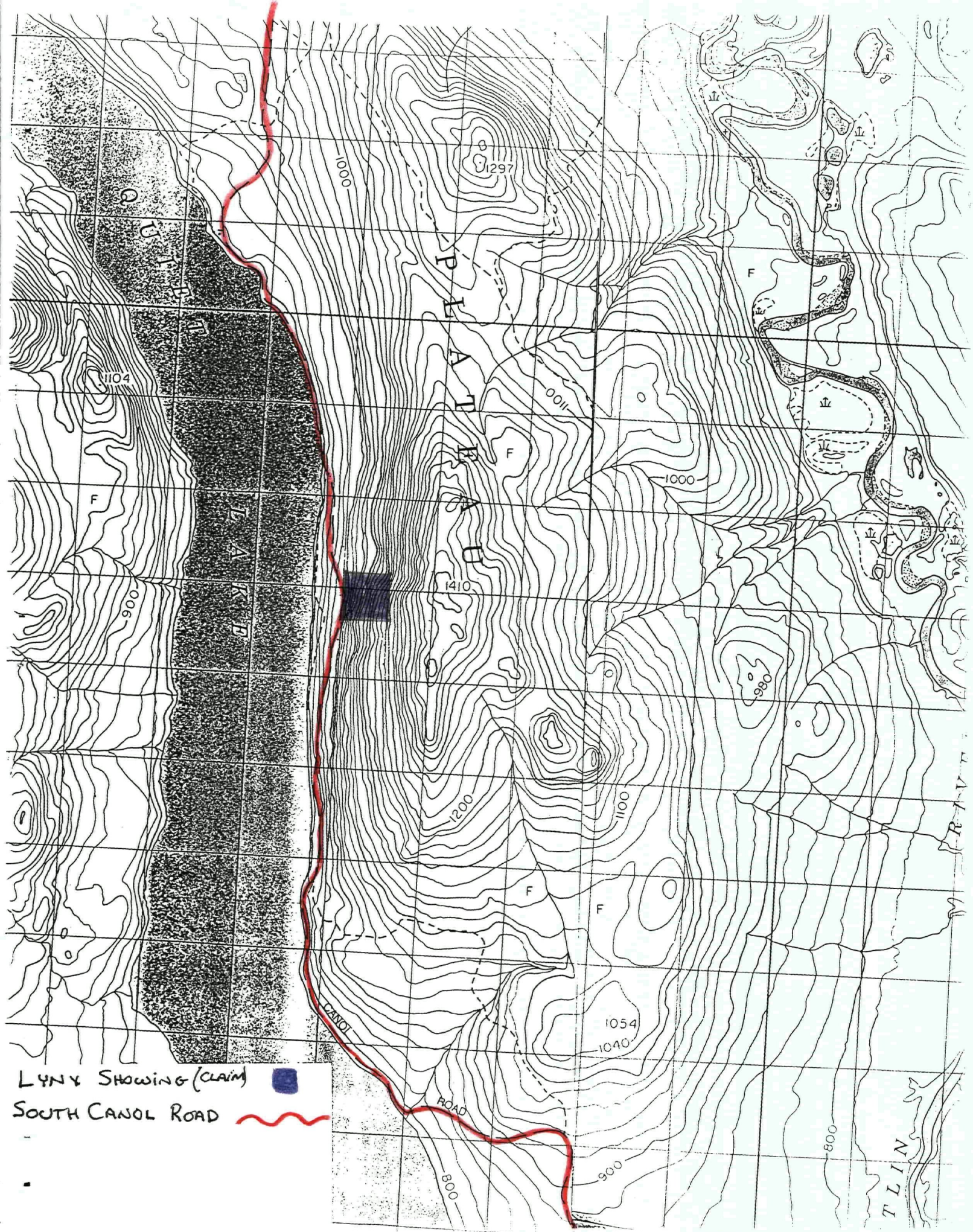
Paul Malkin



WO#27751

Sample #	Au ppb
LXS As	236
LXS Bs	142
LXS Cs	70
LXS Ds	122
Lynx CL LN L1NE 47M N Post I	<5
Lynx CL LN 65 MN	7
Lynx CL LN 118 M	7
Lynx CL LN 330 M	11
Samp QL RD IN	12
Post No I Lynx	9
Q1 SED	<5
Q5B	6
Q6	25
Q7	70
Q8	31
Q9	6
Q10	7

Certified by

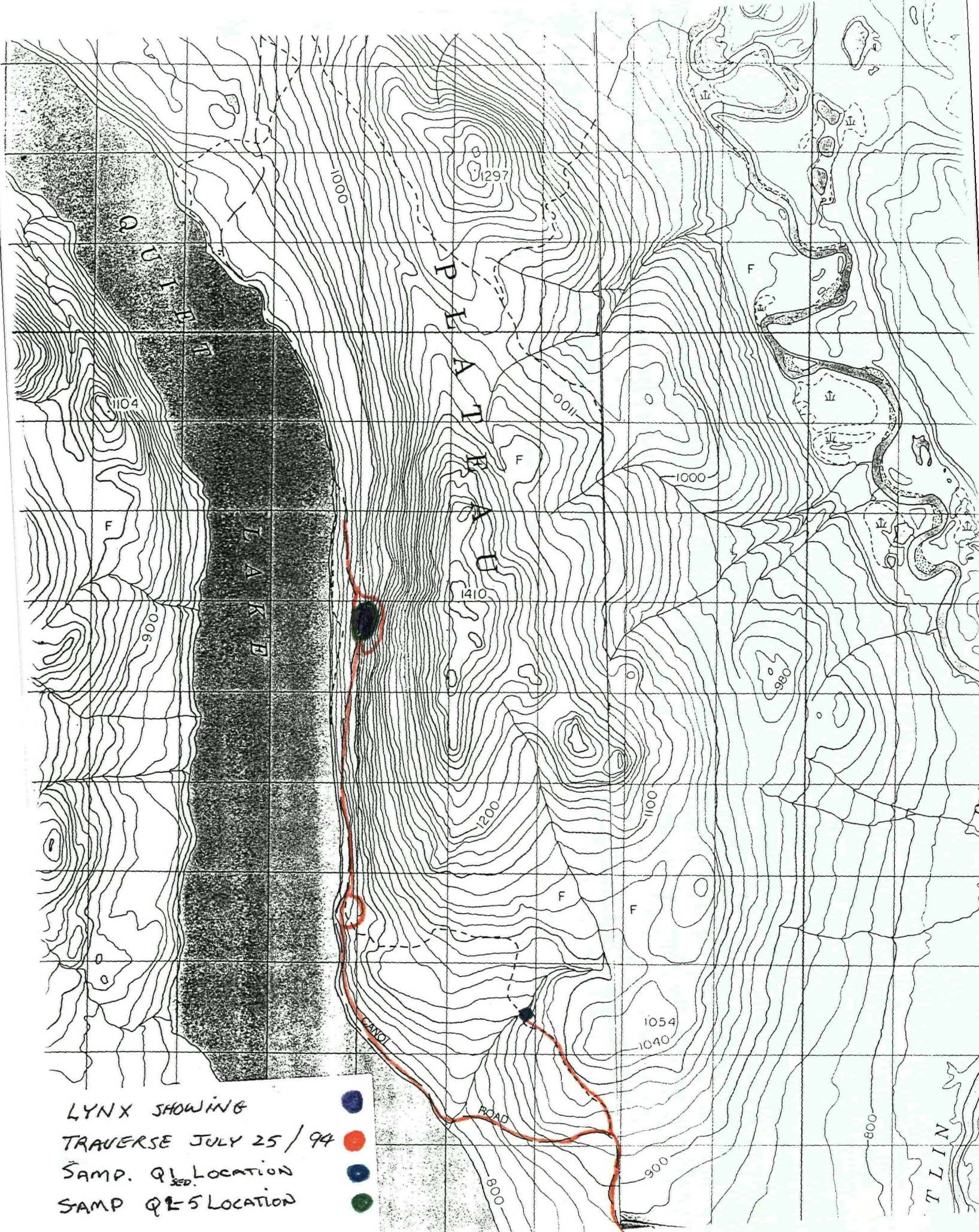




LYNX SHOWING (CLAIM) 
SOUTH CANOL ROAD 

MAP# LYNX LOCATION CLAIM

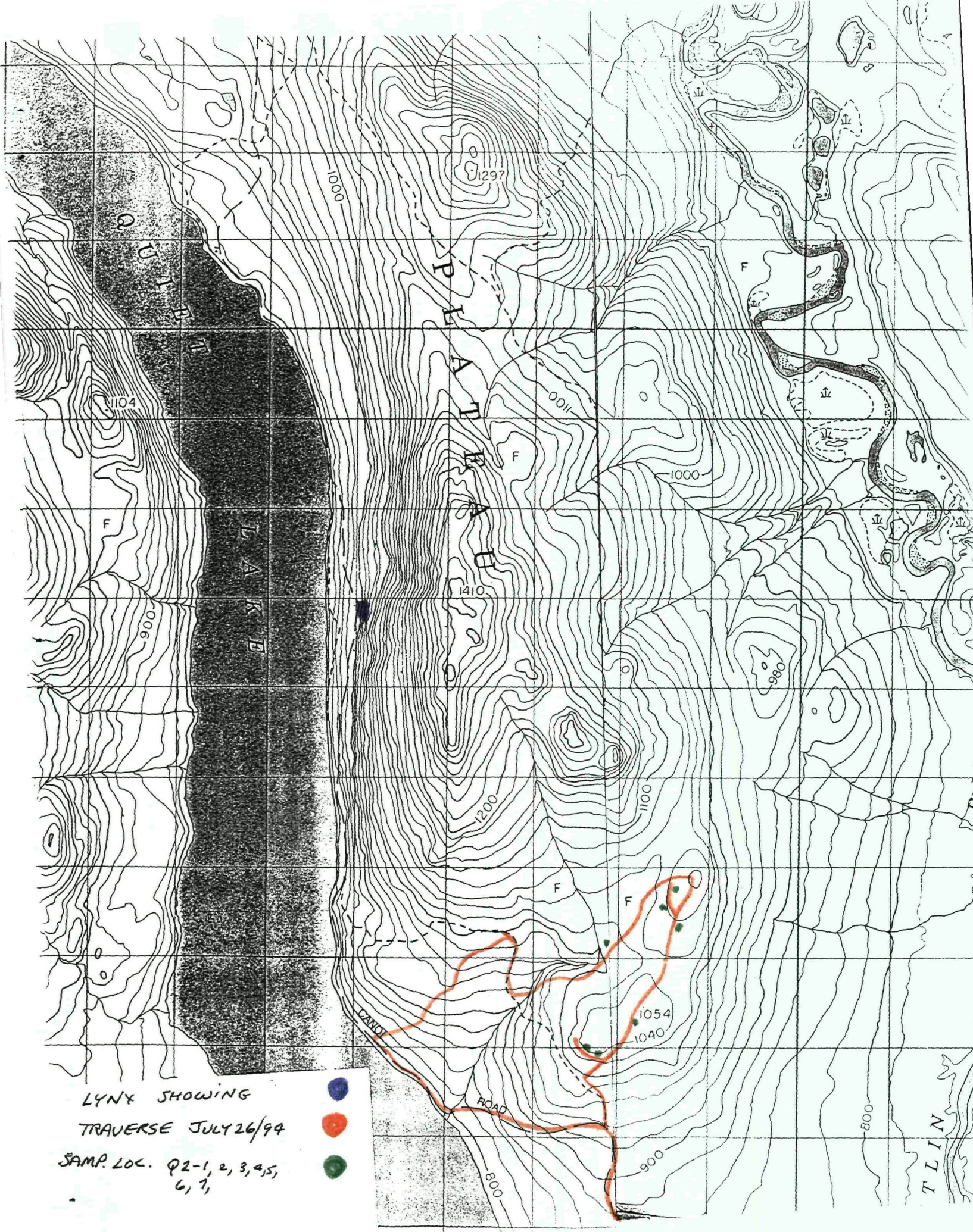
ALASKA HWY 85.5 km



LYNX SHOWING
 TRAVERSE JULY 25/94
 SAMP. Q1_{SED.} LOCATION
 SAMP. Q2 S LOCATION

-
-
-
-

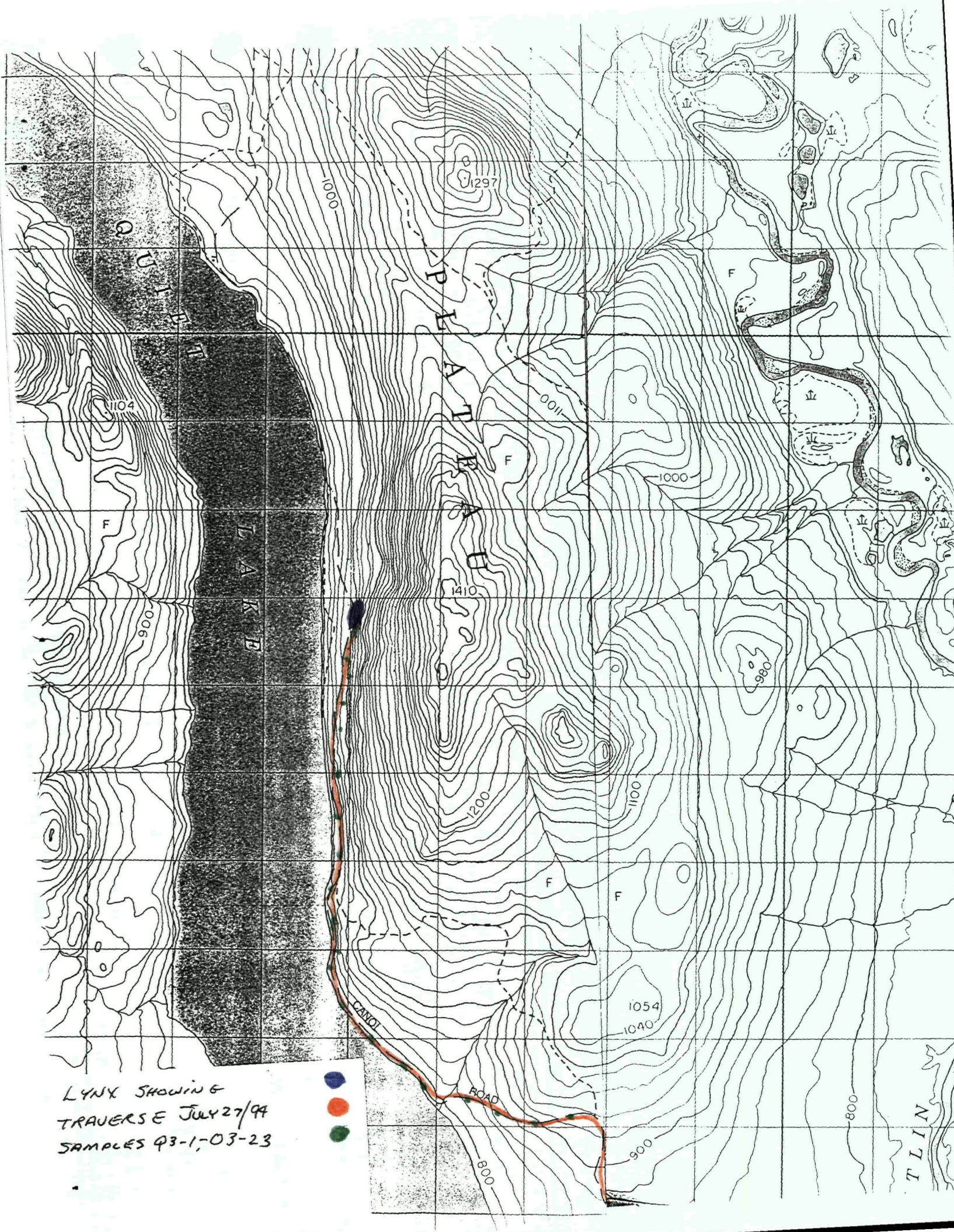
EMAC/aa



LYNX SHOWING
 TRAVERSE JULY 26/94
 SAMP. LOC. Q2-1, 2, 3, 4, 5,
 6, 7,

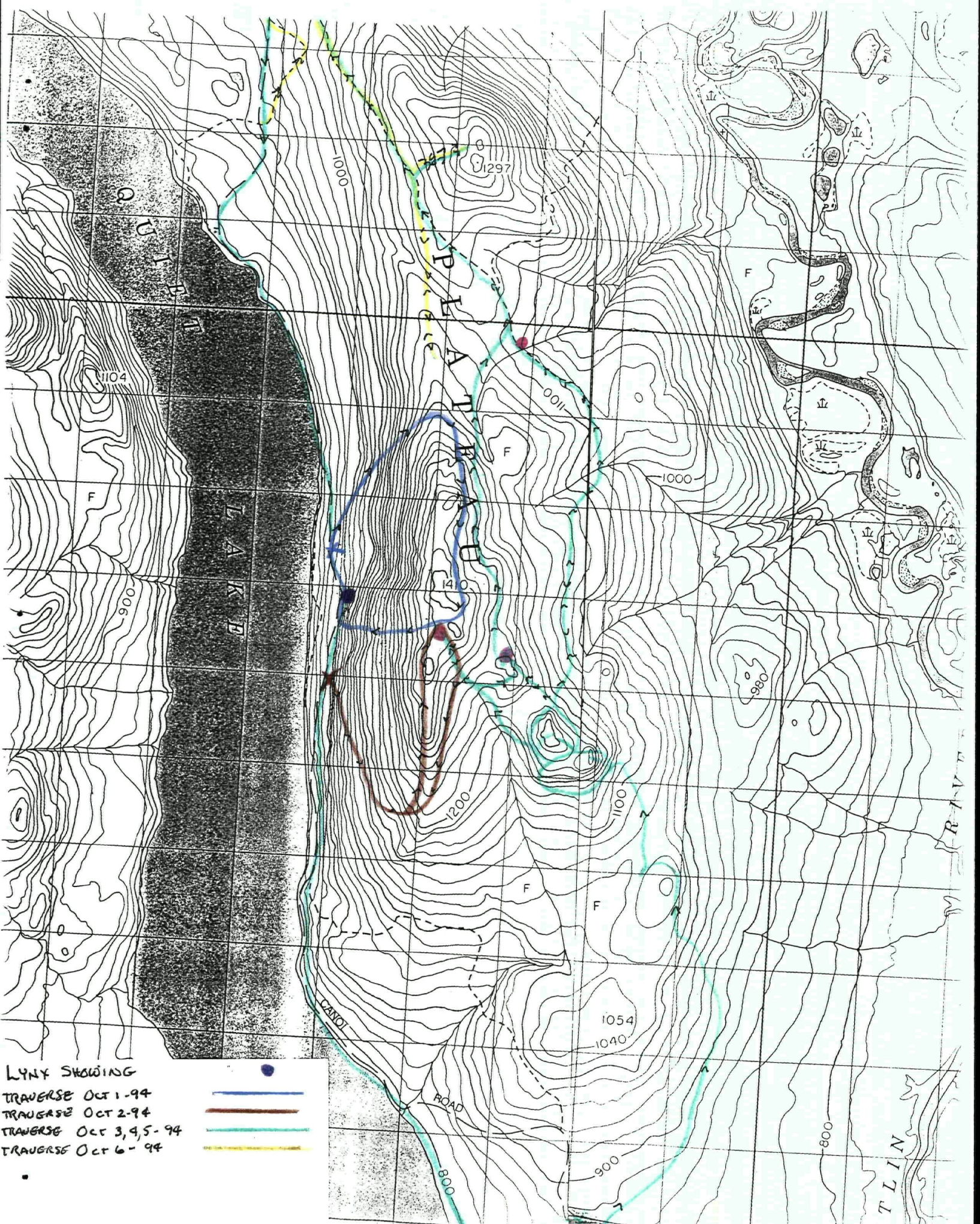


MAP # 14.11.7-26-94

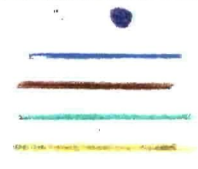


LYNX SHOWING
TRAVERSE JULY 27/99
SAMPLES Q3-1, 03-23

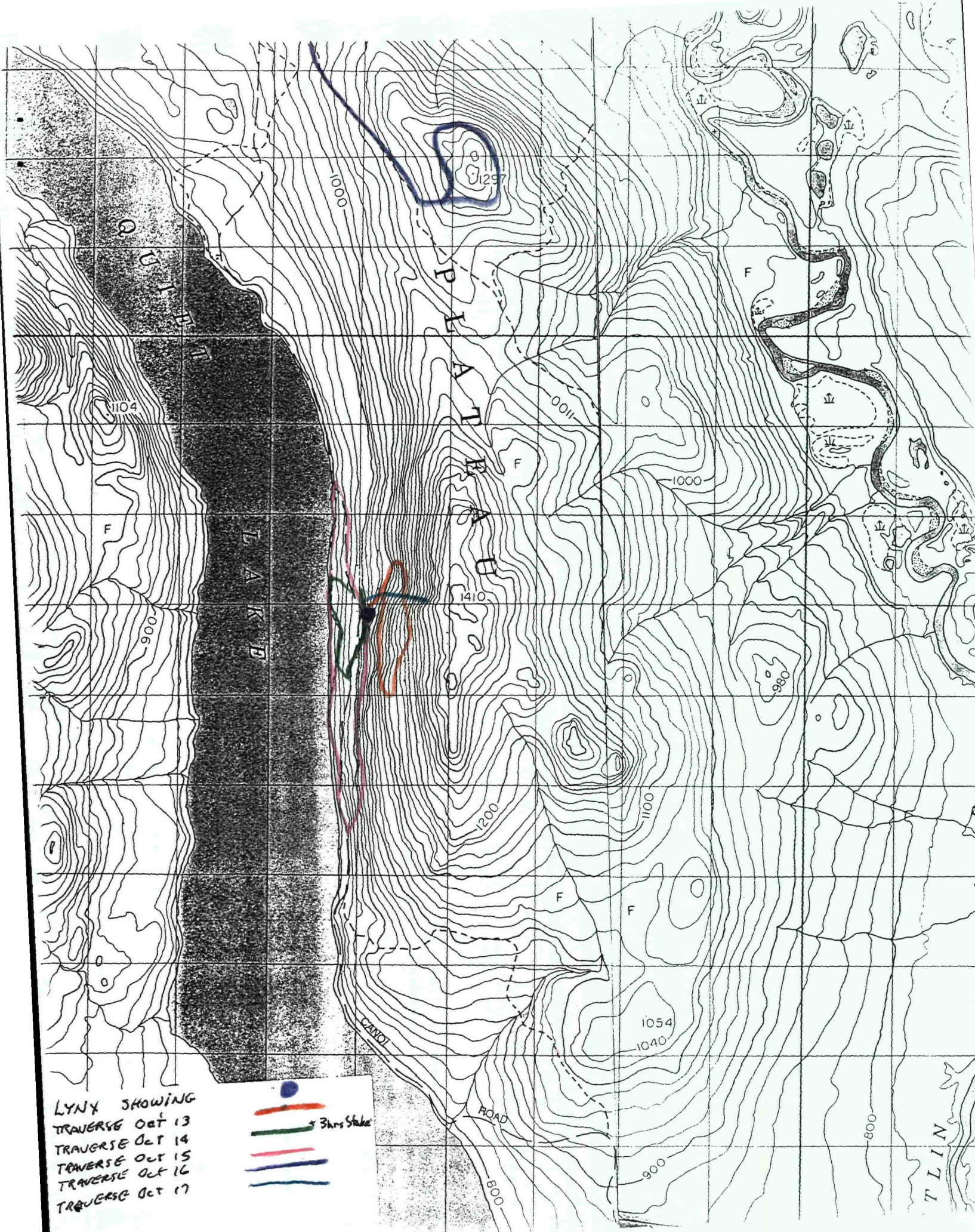




LYNX SHOWING
 TRAVERSE OCT 1-94
 TRAVERSE OCT 2-94
 TRAVERSE OCT 3,4,5-94
 TRAVERSE OCT 6-94

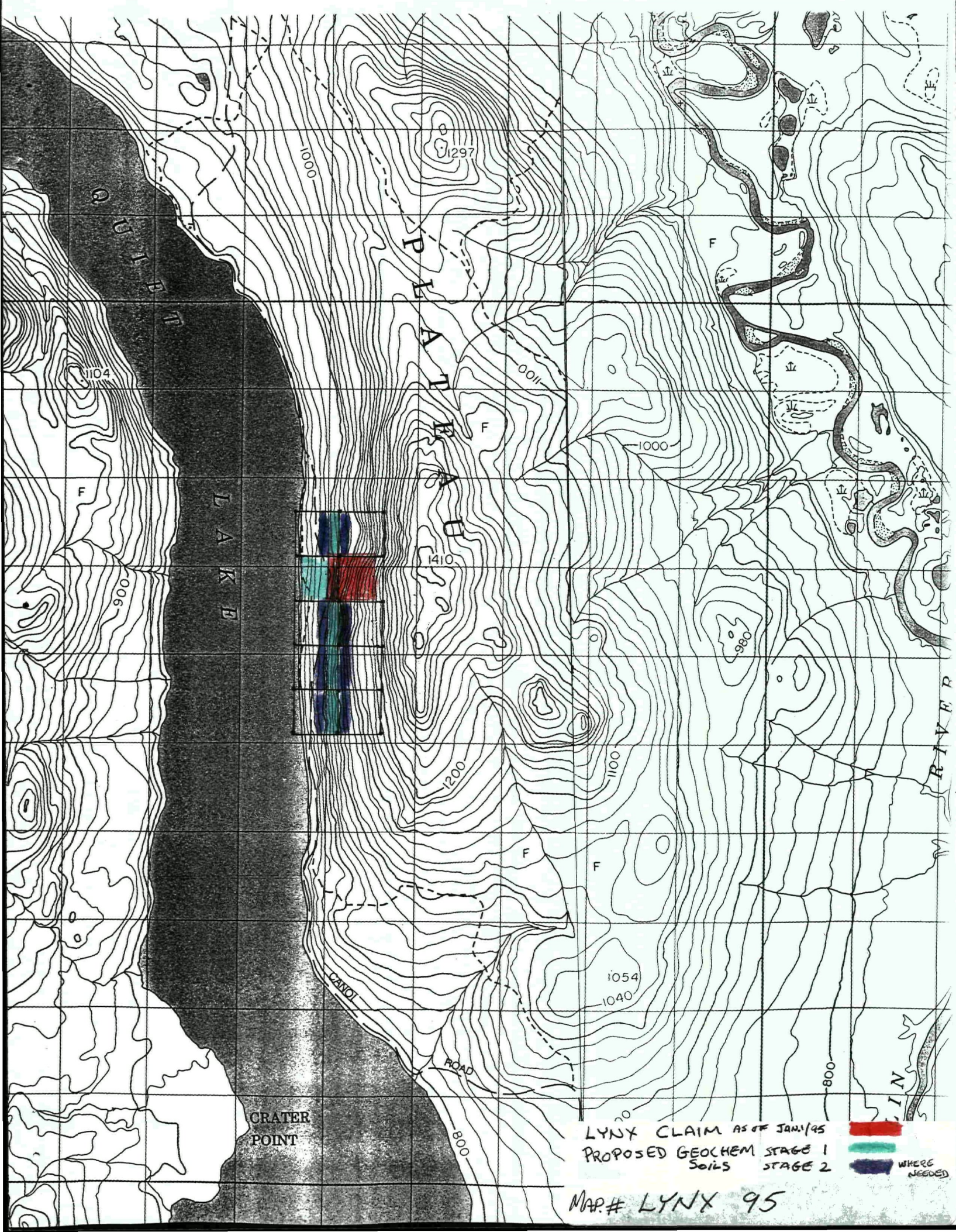


MAP# LYNX 10-1,2,3,4,5,6-94



LYNX SHOWING
 TRAVERSE Oct 13
 TRAVERSE Oct 14
 TRAVERSE Oct 15
 TRAVERSE Oct 16
 TRAVERSE Oct 17

●
 — 3hrs Stake



CRATER
POINT

LYNX CLAIM AS OF JAN/95
PROPOSED GEOCHEM STAGE 1
SOILS STAGE 2

WHERE
NEEDED

MAP.# LYNX 95



Province of British Columbia
Ministry of Energy, Mines and Petroleum Resources

THIS IS TO CERTIFY THAT

Paul Malkin

HAS SUCCESSFULLY COMPLETED

MINERAL EXPLORATION COURSE FOR PROSPECTORS

AND IS HEREBY GRANTED

THIS CERTIFICATE OF ACHIEVEMENT

[Signature]

DIRECTOR OF
PROSPECTORS' ASSISTANCE

[Signature]

COURSE INSTRUCTOR

MAY 9, 1987

DATE



Province of British Columbia
Ministry of Energy, Mines and Petroleum Resources

THIS IS TO CERTIFY THAT

PAUL R. MALKIN

HAS SUCCESSFULLY COMPLETED

A BASIC PROSPECTING COURSE

AND IS HEREBY GRANTED
THIS CERTIFICATE OF ACHIEVEMENT

W. J. Little

DIRECTOR OF
PROSPECTORS' ASSISTANCE

H. P. Little

COURSE INSTRUCTOR

3 April 87

DATE



VICTORIA, BRITISH COLUMBIA

COMMUNITY EDUCATION SERVICES

This is to certify that

PAUL R MALKIN

**HAS SUCCESSFULLY COMPLETED A COURSE
OF 63 HOURS DURATION IN**

PROSPECTING - GEOLOGY

87-03-31

A handwritten signature in cursive script, reading 'Patricia Q. Flap'.

DIRECTOR OF COMMUNITY EDUCATION SERVICES

"There is a mine for silver and a place where gold
is refined.
Iron is taken from the earth,
and copper is smelted from ore.
Man puts an end to the darkness;
he searches the farthest recesses for ore in the blackest
darkness.
Far from where people dwell he cuts a shaft,
in places forgotten by the foot of man;
Far from men he dangles and sways.
The earth, from which food comes,
is transformed below as by fire;
Sapphires come from its rocks,
and its dust contain nuggets of gold,
No bird of prey knows that hidden path,
no falcon's eye has seen it.
Proud beasts do not set foot on it,
and no lion prowls there.
Man's hand assaults the flinty rock and lays bare the
roots of the mountains.
He tunnels through the rock;
His eyes see all its treasures.
He searches the sources of rivers
and brings hidden things to light."

Job 28:1-11
N.I.V.



NEVILLE CROSBY INC.

325 W. 6th AVENUE, VANCOUVER, B.C. V5Y 1L1

TELEPHONE USE-4343 TELEX 04-507762

MINING & FORESTRY SUPPLIES

**Waterproof Level Book
NCI #342**

MC. VAN. 99

PAUL MALKIN

IAN FRANCIS

115P

94-067

JUNE 6 94

IAN FRANCIS AND MYSELF
PAUL MALKIN WENT TO MAYO
AND UP TO WHERE CLEAR CREEK
ROAD LEAVES THE KLONDIKE HWY.
WE DEPARTED AT 8:30 AM WHEN
ARRIVED MAYO 1:30 PM DEPARTED
MAYO 3:30 MET ROGER HULSTEIN
AT MAYO GAS STATION SAID HI!
TOTAL KMS 420 TO MAYO 70 TO
CLEAR CREEK. TURNOFF A TOTAL OF
940 KMS RETURN.

TARGET IS A SMALL GRANITE, GRANODIORITE, QUARTZ
MONZONITE PLUG APPROX 2.5 KMS ON THE CONSERVATIVE
TRAIL WEST OF MINTO LAKE 115P 9 (BOSTWICK
Geology map 1946-1949) THIS AREA SHOWED A HIGH
OF 1426 PPB AU AT SAMPLE LOCATION 1352
(SAM# 115P 871352) REGION SEDY WATER SAMPLE.

JULY 16/94 10:05

(1)

LEFT (FINALLY) WHSE AT 9 AM
DROVE TO CARMACKS TO PICK UP
IAN WHO HAD BEEN AT THE
SATO CLAIM 115-H #21 SINCE
JULY 12/94 ETA WAS 11 AM IN
CARMACKS BUT WAS POSTPONED TILL
2 PM DUE TO HEAVY FOREST FIRE
COMMITMENT OF HELICOPTER. ARRIVED
IN MAYO AT 5:30 PM FUELED TRUCK
DROVE TO 5 MILE LAKE YTG CAMPSITE
NORTH OF MAYO SET UP TENT AT
CAMPSITE #20. DROVE IN TO TARGET
AREA 45 KM FROM CAMPGROUND 11529
35 KM ON THE MINTO LAKE RD. DROVE
TO BEAR OR CARLSON CRK. (OPEN FILE 1993-
10(G) KREFT) WALKED UP DRAINAGE LOOKED
AT CREEK GRAVELS AND BOULDERS AS
THERE ISNT ANY ROCK EXPOSURE IN THIS
AREA (DRAINAGE) BOTTOM. FOUND NEW FLAGGING
IN THE DRAINAGE BUT NO INFORMATION WAS
RECORDED ON IT. LOCATED FORK IN UPPER
DRAINAGE AREA HAS BEEN RECENTLY MINED
FOR SOME TIME. DROVE BACK TO 5 MILE
CAMP GROUND.

~~0~~ JULY 17/94

DEPARTED 11 AM 5 MILE

(2)

MADE OUR WAY ALONG THE CONSERVATIVE TRAIL PAST MINTO LAKE THROUGH THE M'LAGAN CRK DRAINAGE. LOCATED OLD ROAD HEADING SW OFF THE MAIN TRAIL. FOLLOWED TILL WE CAME TO THE BEAR OR CARLSON CRK DRAINAGE DRAINAGE ROCK IS MOSTLY PHYLLITE WITH SOME QUARTZITE. WE FOUND NO ROCK EXPOSURES IN DRAINAGE HOWEVER THE CRK IN THIS IS IN A DEEP RAINE ON THE NB SIDE OF THE DRAINAGE THERE ARE EXPOSURES OF PHYLLITE OF THE YUKON GROUP. DRIVEN BACK AT 5 MILE LAKE AROUND 6 PM MET DANIELE HEON AT CAMP GROUND. EXPLAINED MY TARGET TO HER. SHE SAID THAT THE CONCLUSION ON THE GOLD ANOMALY ON THE REGIONAL STREAM SEDY SAMPLE HAD BEEN THAT THE GOLD WAS IN OVERBURDEN GLACIAL DEPOSIT AND NOT LOCAL. DECIDED TO GO TO CLEAR CRK AREA OF McQueston.

~~MAN JULY 18/94~~
 (115 P 14) HAD LUNCH TO MAYO. THEN DEPARTED FOR Dawson claim office as we couldn't get the claim info in Mayo we needed for NTS. 115 P 14 Arrived in Dawson @ 1:30 pm Departed for Barlow Dome arrived @ Dome 3pm. Made camp at km. 2 + 10f.

The Clear Crk Rd. located old
cat road that runs from huzz
Clear Crk Rd NW toward Syenite
Mt. Traversed down this cat road
for 2 kms. RETURNED TO CAMP, Decided
to traverse to Syenite Crk across
the Little Klondike River.

4
Tues.
July 19 - started out at 9am Followed
old cat road to a point where
it switches back down into the
drainage. We carried on
over the toe of the ridge down
into the Little Klondike River
Drainage. We found a tree across
the river due to the banks being
undercut uprooting trees. We
crossed carefully. We prospected
gravel bars along the river
down stream. then headed toward
the crk SE of Syenite Crk.
Found old 1920's? log cabin on
what seemed like old placer
working close to the confluence
of this crk. of Klondike River.
We then went over the ridge

" that separates this drainage
and Synerite Crk drainage
to the north. We took a
Soil SAMPLE (SAM.10 CABIN CRK)
of this ridge. These drainages
originate in Synerite mts.
We made it into Synerite Crk
drainage and followed it down
to the continuation of an
old cut rd. We had started
our traverse on. Came to the
Little Klondike River Crossing
of this cut track stripped
off and waded across
(COLD) and (BUGS). Worked our
way back to our ridge and
back up to the Clear Crk
Rd. arrived back at 9 pm
EXHAUSTED to Camp. Decided
to head back to UTTSE Next
day. Have to talk to KAREN about
using HELICOPTER to EXPLORE
across Little Klondike as
crossing it is dangerous.

July 20 ☁

(5)

Woke up to a very moist morning
Cam had a visit by something at
3³⁰ couldn't keep my dog from
growling but kept myself awake
Packed up camp departed for
Whse road very wet and slippery
rained all the way till Lake Laberge
arrived in Whse 4pm. Phoned
Karen's office talked to Shirley
about project plans told
Karen away till the 5th Aug.
Slept well?

July 20 wrote, researched, relaxed,
and saw Shirley planned next
excursion.

JULY 29 = (☺) = **IND CLAIM** (1)

ARRIVED FROM QUIET LAKE THIS MORNING SLEPT AT MOOSE LK LAST NIGHT. STARTED TRAVERSE SOUTH TOWARDS DRAINAGE EAST OF SQUAW CRK. DRAINAGE. TOOK SAMPLES ALONG TRAVERSE SAMPLES:

- 200m R-001 QUARTZ
- 245m R-002 ALTERED QUANTITE
- 250m R-002 GRAB
- 345m R-003 BRECCIA ?
- 590m R-004 GRAB
- 2000m R-005 BRECCIA OR CONGLO
- 2570m R-006

TRAVERSED ALL THE WAY DOWN TO THE CRK. FOUND OLD PLACER WORKING. NEWSPAPER, CALENDER ETC 1989 FOUND PLACER CLAIM POST: ELDORADO CRK

MI
POST 2 POST 1
POST IS DOWN STREAM

MAURICE GERVAIS PLACER JULY 22/88
34436

THIS DRAINAGE IS ELDORADO CRK
WENT BACK TO CAMP.

E.O.T 7pm

JULY 30



(2)

STARTED TRAVERSE TOWARDS (SOUTH)

ELDORADO CRK AT 7:45 AM. DROVE DOWN

RD AT PICKED UP YESTERDAYS SAMPLES

WENT DOWN TO CRK TOOK MORE

SAMPLES R-007 IN PLACE

R-008 PORPHYRY BOULDER (GREY ORIANTED)

R-009 HORN FELD ?

R-010 ALTERATION

WALKED UP DRAINAGE. DRAINAGE AT

THIS POINT CUTS THROUGH INTRUSIVE

ROCKS (GRANITE GRANODIORITE QUARTZ

MONZONITE) - (BOSTON GEOLOGY MAP 1946-49)

LARGE PORPHYRY BOULDERS COVER

THE DRAINAGE BED. WE WALKED

UP DRAINAGE ACROSS CONTACT

WITH ROCKS OF THE YUKON GROUP

QUARTZITE SCHIST. TO THE EAST

ROCK EXPOSURE IS OF THE INTRUSIVE

ROCKS AND ALSO TO THE SOUTH AND

WEST AREAS OF CONTACTS SEEM

EXTREMELY WEATHERED AND THEREFORE

COVERED BY OGBERDEN IN RECESIONS.

ARRIVED BACK AT CAMP AT 4:30 PM.

JULY 31



(3)

WENT TO DEMPSTER CORNER LAST NIGHT FOR GAS AND A MEAL. WASHED IN THE KLONDIKE RIVER (GREAT) ARRIVED BACK AT CAMP AT 10 PM. WE HAD INCREDIBLE WIND & RAIN STORM LAST NIGHT. FROM 12³⁰ AM - 3 AM. THE RIDGE OUR CAMP IS ON IS QUITE EXPOSED TO THE ELEMENTS BUT BUGS ARE NOT BAD.

TODAY WE ARE ON A RIDGE NORTH OF OUR CAMP. THIS RIDGE WAS BURNED WITHIN THE LAST 2-3 YEARS WITHIN THE BURN IS A PILE OF ROCK WHICH SEEM TO BE INTRUSIVE IN COMPOSITION.

TOOK THREE SAMPLES FROM WITHIN THE BURN AREA.

BR-111 GRAB DYKE-NITROSIDE?

BR-112 GRAB

BR-113

SAMPLE BR-113 IS TAKEN FROM A (STONE RING) A FROST FEATURE.

FOLLOWED AN OLD RD DOWN TO THE SOUTH KLONDIKE RIVER ROCK OF YUKON GROUP.

AUG 1
GOT BACK TO CAMP AROUND 3:30pm
DECIDED TO GO TO QUARTZ CRK
ARRIVED QUARTZ CRK 9:30 TALKED
TO LON AUSTIN WHO HAS A PLACER
CLAIM ON QUARTZ CRK WATCHED
HIM PAN OUT HIS KINES AND
RECOVERED GALENA FROM TAILINGS
(FINES) HAD SUPPER WITH MR. AUSTIN
DECIDED TO INVESTIGATE SOURCE OF
GALENA IN QUARTZ CRK DRAINAGE.
WENT BACK TO CAMP 8pm.
BROKE CAMP AND STARTED OUT AT
10pm TO DRIVE TO WYSE. ARRIVED
WHITEHORSE NOON AUG. 1.

AUG 7. ☺ (4)

LEFT WHESE NOON ARRIVED CLEAR CRK
7pm AFTER GOING TO DEMPSTER CORNER
FOR GAS IN TRUCK & GERRY CAN. MADE
CAMP AT SAME SPOT APPROX 38 km
CLEAR CRK RD. ABOVE RIDGE THAT
DIVIDES SQUAN AND ELBORADO CRKS
(5) AUG 8 W. GOT UP AT 7AM SMOKE
FROM FIRES (FOREST VERY HEAVY
THIS MORNING). DROVE TO QUARTZ
CRK STARTED TO HIKE UP right (west)
SIDE OF QUARTZ CRK DRAINAGE ON A
SOUTHERLY TRAVERSE THEN ACROSS THE
CRK QUARTZ UP A RAVID AREA IS
COVERED WITH SSM STRENGTH SAPPING
MOSS AND OUBERBURN. ANY OUTCROP
IS OF THE YUKON GROUP. ANY GROUND OF
INTEREST IS STAKED. TRAVERSED BACK
DOWN INTO CLEAR CRK DRAINAGE. ARRIVED
BACK AT CAMP 5pm.

THERE IS GALENA IN QUARTZ CRK DRAINAGE -
WHERE HAS IT COME FROM?





AUG 9¹⁹⁵⁰

(6)

WENT UP AT 7:30 AM

WENT BACK TO QUARTZ CRK TRAVERSED
UP TOWARDS THE WEST RIDGE ABOVE LEFT
BANK OF CLEAR CRK SOUTH OF THE QUONSETT
DREDGE. TRAVERSED COUSINS CONNECTED WITH
YESTERDAY'S TRAVERSE CAME DOWN QUARTZ
CRK DRAINAGE TOOK TWO (2) SEDIMENT
SAMPLES OUT OF QUARTZ CRK.

QCRK 101, QCRK 102, SLEPT AT
CAMP ^{AUG 10¹⁹⁵⁰} ~~+~~ CAME HOME AFTERNOON

ON THE 10th - DUPLICATED
SAMPLES FROM BURN AREA. (JULY 31)
THE MORNING. WENT TO DEMPSTER
CORNER FOR GAS ARRIVED
WHSE 8 PM.

JULY 25/74 ①



3:00 AM

ARRIVED QUIET LAKE CAMPGROUND
(YTS) 12 NOON SET UP CAMP. HAD
LUNCH. HEADED OUT TO SEARCH
SOME 17 KM NORTH OF CAMPGROUND
ON THE SOUTH CANAL RD. BROUSING
ROCK, DECIDED TO GO BACK UP SOUTH
CANAL RD. SOUTH TO AN OLD ROAD
ENTERING FROM THE EAST SOUTHER
LY ON THE SOUTH CANAL APPROX. 9 KM
NORTH OF THE QUIET LAKE CAMPGROUND
THIS ROAD HEADS IN A NW DIRECTION
AN OLD BRIDGE AT LAKE CREEK HAS
COLLAPSED AND IS IMPASSABLE. TOOK
SEDY SAMPLE FROM CREEK.
WENT BACK TO LINK SHOWING COLLECTED
SAMPLES (ROCK) #2-5 WENT BACK
TO CAMP MADE SUPPER 6:30
WROTE ROAD VENT TO SED.

JULY 26/94

(2)



WENT UP 8 AM HAD BREAKFAST
DEPARTED QUIET LAKE CAMPGROUND
9 AM. WENT DOWN SAME
ROAD AS YESTERDAY (JULY 25)
TRAVERSED IN A N/S DIRECTION APPROX
2 KM PROSPECTED TO LAKE AT CREEPS
(ANDESITE WITH ABUNDANT QUARTZ TUBE
SAMPLE Q2-2 - Q2-3 Q2-4, Q2-6
Q2-7 AND SOILS Q2-1 - Q2-5
TRAVERSED SW INTERSECTED RD.
APPROX 1 KM N. OF BK POINT OR
STARTING, WENT N. ON OLD RD
AND THEN TURNED DUE WEST TOWARD
QUIET LAKE VERY WET GROUND
FINALLY MADE IT TO SOUTH
CANCEL RD. WALKED BACK TO
TRUCK DROVE TO RECREATION SITE
AT APPROX KM 100 TO HAVE
A BATH IN THE LAKE. ARRIVED
BACK AT QUIET LAKE CAMP AT
4:30 PM. MADE SUPPER -

JULY 27/74

11:11

(3)

Got up at 8 AM. Wet overcast
day made breakfast. Sat in
truck cab and discussed
program for the day. Decided
to start at km 89 south
LANCE RD. AND TAKE STOPS
EVERY 300m along rd. All
the way to the limit took
30 samples 93-1 = 93-23
Arriving back at camp 4 PM
very wet. Had supper.



4

JULY 28/99.

GOT UP AT 8:30, STOPPED
RAIMOND HAD BREAKFAST BROKE
CAMP. DEPARTED QUIST LAKE
CAMP. AT 10:30 STOPPED AT
LYNY SHOWING COLLECTED MORE
JAMES THEN STARTED OUT FOR
CLEAR CREEK. AT NOON REACHED
N2 TO ROSS RIVER FOR FUEL
THEN EAST TO CARNACKS LOTS
OF FOREST FIRES. DROVE TO
MOOSE LAKE LODGE. 12 MIDNIGHT
MADE CAMP.

Quiet Lake

July 25/95

San Francis

Paul Malkin asst

equipment - 4x4 truck
- silver rangers
- hammers
- U.V. lamp
- sample bags
- topsoil shaker

Sunny and hot

15

Quiet Lake samples

Q1 - taken in stream
concentrated in
pan to sand size

Q2 - 50cm quartz
50cm sheared andesite

Q3 - 1m sample - 30cm brown
sheared andesite 30cm white w/iron
contacts - 40cm sheared gray with quartz

Q4 1m sample - 30cm limonite
70cm sheared andesite

Q5B Quartz laced Volcanic
w/green / malachite?
mariposite?

Q5 Iron oxide quartz sheared
andesite

July 26/96 Quiet

Sample Q2-1

coarse grained quartz
granite sub crop?

Q2-2 Green Fine

grained flow banded
minor sulfides (pyrite)
Subc is a knoll of
coarse to fine grained
monzonite - float is
laminated chert and
shale

Q2-3 top of knoll

intrusive w/ quartz vein
2cm thick

Q2-4 soil north of

knoll top of drainage

Q2-5 stream

Q2-6 north of stream
on flat perch

Q2-7 float dark

fine grained w/ calc
in north fork 50m from
Fork

EOT Kilo 89. Canal Rd
to 5 1/2 kilometers
to andesite pit 94. Km

July 27/94 / Rain

SOIL Q3-1
Phyllite on Bedrock

Q3-2 - Horizon - Brown

Q3-3 - Loam shif rounded rocks

Q3-4 - GRAVEL SILT

Q3-5 - SKIPPED

Q3-6 - Clay-sand - Brown

Q3-7 - Black-clay-organic

Q3-8 - GRAVEL wet

Q3-9 - Clay wet

Q3-10 - Clay-wet - iron stain

Q3-11 - GRAVEL

Q3-12 - Clay - quartzite

Q3-13 - Gravel rounded

Q3-14 r/c Quartzite

Q3-15 r/c Quartzite

Q3-16 r/c green sand

Q3-17 Sub crop green

Q-3-18 - Brn SANDY

Q-3-19 - " " "

Q-3-20 " " "

Q-3-21 " " "

Q-3-22 O/c

Q-3-22 Rock sample Green bedded with Quartz with and across bedding

Q-3-23 Subcrop Brn

OCT. 1

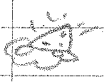


Got up at 7:30 and
break camp because to go up
rope from showing. There is
a lot of overhanging as slope
is steep $35^{\circ} - 50^{\circ}$ the trees are
scared from rocks rolling (falling)
from the top of the ridge.
From the ridge top you can
see Quiet Lake to the north^W
and SW and the Nisutcin
River and Nisutcin Batholith
to the east. Found a lake on
top of the ridge to the south.
Slope is gentle on the eastern
side of the mt. headed north
along east side of ridge.
Not much rock exposure on
this slope. Circled around
shoulder and went ~~across~~
slope back down to south
canoe rd. Fired flat tire
on truck. Went back to canoe
arrived here at 5:00 made
supper.
bagged samples.

N. J. PENFALL LTD. MADE IN B.C.
DUKSBAR WATERPROOF

STN.	Depth.	Texture	Colour	Slope Fragments:	Ca.
------	--------	---------	--------	---------------------	-----

OCT. 2



GOT UP AT 800 HAD
 BREAKFAST WARMER THIS MORNING
 QUITE A FEW HUNTERS CAME AROUND
 THE CAMP SITE LAST NIGHT ~~SEEING~~
 ETC. MEET SOME HUNTERS NORTH
 OK THIS MORNING SO I THINK
 I WILL STAY SOUTH OK IT
 TODAY. STARTED OUT HOPPING DOWN
 TO THE SLOPE HEADING S.E. VERY
 WET GROUND SO I HEADED NORTH
 UP THE SHOULDER TO WHERE I
 WAS YESTERDAY NICE VIEW FROM
 UP ON TOP. THINK I WILL GO DOWN
 ALONG THE WEST SIDE OF THE RIDGE
 TOOK SOME ROCK SAMPLES OF
 OUTCROP STILL DARK GREEN AND DISCO
 TO GRAY WEATHERED FOLLOWED SAME
 ROUTE DOWN TO RD/SOUTH CANAL
 WENT TO LAKE TO WORK UP GOT BACK
 TO CAMP SITE AT 400 MOUNTAINS
 HAD SUPPER RABBIT ROCKS

R. D. PENHALL LTD. MADE IN B.C.
 DUBSBAK WATERPROOF

MON OCT 3



DECIDED TO TO ALONGS TRAVEL
FOR A FEW DAYS ALONG THE EAST
SIDE OF THE (LYNX MT) ALONG AN
OLD LOGGING? RD THAT RUNS
BETWEEN THE MT AND THE NISUTLIN
RIVER TO THE EAST. LEFT TRUCK 9km
NORTH OF CAMP GROUND. STARTED OUT AT
11 PM WITH ENOUGH SUPPLIES FOR A FEW DAYS
I HOPE TO MAKE IT TO THE SOUTH
CANAL NORTH OF THE TRANSPORTATION
MAINTENANCE CAMP AT KM 100 SOUTH
CANAL. ALIKE ALONG OLD RD THERE HAS
RECENTLY BEEN LOGGING WITH'S AREA.
I HOPE THAT THERE ABOUT MANY
HUNTERS OVER ON THIS SIDE. AREA
IS HEAVILY FORRESTED WHERE NOT
LOGGED CHECKED KNOW TO THE WEST
AND HEADED TOWARD TWO HIKER
KNOLLS TO THE NORTH WEST. AREA IS
INTERESTING GROUND IS REALLY NOT
BETTER CLOSER TO THE MT SIDE
MADE CAMP BETWEEN TWO KNOLLS
DRIED BOOTS AND ATE.

OCT. 4

63

KANU MY DOG WENT CRAZY
LAST NITE MUST HAVE BEEN
SOME THING AROUND. GOT UP AT
830 TO RAIN DRIZZLE. BROKE
CAMP AND HEADED NW CHECKED
AROUND KNOLL AND HIRED DUE
N. A LITTLE DOWN SLOPE AND
TO THE EAST FROM SAT. TRAVEL
CAME TO CREEK DRAINAGE HEAVY
MOSS. CAME BACK ONTO OLD RD
MADE CAMP ON CREEK AT RD.
LEFT MOST GEAR HERE AND TRAVEL
BACK SOUTH ALONG RD. CAME BACK
TO CAMP HAD SUPPER HERE
SHOTS QUITE CLOSE. AFTER
DARK WENT TO 360 TENT
SMELS OF WET DOG OBTAIN

OCT. 5.

GET UP AT 7:30 STAYED IN
BAB TILL 9:00 AHD SOME CEREAL
PACKED MY GEAR COLD HEADED
NORTH ALONG OVERCROWN RD
MOSTLY FOREST AND MOSS
NO OUTCROP CAMP TO OLD
FUCK N RD TOOK LEFT
FORK CHECKED OUT KNOLL
TO THE NORTH EAST TOOK
SOME SAMPLES. CAME TO
SANTA CANAL RD AT ABOUT
4:00 LEFT PACK ETC IN RUSH
AND STARTED SOUTH ON CANAL
RD. WALKED TILL 6:30 GOT RIDGE
TO TRUCK WENT TO GET PACK
GOT TO QUART LARS CAMPGROUND
AT 8:00 MADE A GIE SUPPER
FOUND OUT I LEFT MY HANNER
AND SAMPLES BACK AT LAST
SAMPLE SITE WILL GET THEM
TOMORROW.

Q. 22 - GREEN $\frac{1}{2}$ QUARTZ.

○
CALCITE
PIZZES

~~Q. 22~~

Q-23

ROUNDED QUARTZ
RINDER

WITH LARGE
PYRITE CRYSTALS

OCT. 6

☁
HOT

GET UP LATE 900 HAD BREAKFAST
LEFT CAMP AT 1030 DROVE TO POINT
NORTH OF HIGHWAYS MAINTENANCE
CAMP QUIET LAKE. PICKED UP PACK
AND TENT & SLEEPING BAG. THEN HIKE
IN TO WHERE MY HAMMER AND SAMMIES
WERE. GOT BACK TO TRAILS AT 2 PM
WENT BACK TO SHOWING THEN WENT
BACK TO QUIET LAKE CAMP GROUND
BROKE CAMP AND HEADED BACK TO
WHITEHORSE ARRIVED WHITEHORSE AT
SUPPER

OCT 13

CAME TO QUIET LAKE CAMP GROUND

LAST NIGHT ARRIVED AT 9.30 PM

HIT SNOW ON THE WAY HERE, IT

HAILED LAST NIGHT COOLER THAN

LAST WEEK. TOOK SAMPLES IN TO

LAB ON TUES SO HAVE DECIDED TO

STAKE ONE UNIT TO HOLD SHOWING

WILL GO OUT TODAY TO TAKE SOME

SOIL SAMPLES AND TO PROSPECT AREA

ABOVE SHOWING BOTH NORTH & SOUTH.

LEFT CAMP AT 9.00 AM A LOT OF

WUNTERS AROUND DRINKING ETC. SNOW

IS QUITE LOW EXPOSED GROUND IS

FROZEN. HIRED ALONG CONTOUR THEN UP

SLOPE TO THE NORTH THEN ALONG

CONTOUR TO THE SOUTH TOOK

SOME SOILS AND TOOK SOILS AT

SHOWING. CAME BACK TO CAMP

AT 4.00 TO MAKE SUPPER I

HAVE DECIDED TO STAKE TOMORROW

WEATHER PERMITTING.

Post
NO 1

105 F-3

Post 2

NO. 1

NO 2

LYNX

LYNX

N

OCT. 14
1994

200' R
300' L

PAUL
MALKIN

OCT. 14

12³⁰
PM

1994

PAUL
MALKIN
10 AM

LYNX LN, @ km 6.2 NORTH FROM LAKE CRK.

NTS 105 F 3

LAT. 61° 06' LONG 133° 03'

LYNX CLAIM IS LOCATED APPROX
17 KM NORTH OF THE QUIET LAKE
Y.T.G. CAMPGROUND ON THE SOUTH
CANAL ROAD

OCT.

AMM

R. D. PENHALL LTD. MADE IN B.C.
DUKSBAR WATERPROOF

Oct 14.

COT UP AT 8³⁰ COOL HEAD
BREAKFAST HAVE PLANNED
WAY TO STAKE SHOWING COT
TO SHOWING AT 9³⁰ START TO
STAKE AT 10 AM. TOOK SAMPLES
ALONG BLAZE LINE, FINISHED
AT 12:30 CUT MY HAND NOT BAD.
TOOK SOILS AT SHOWING WENT ACROSS
RD (SOUTH CANAL) AND PROSPECTED
AREA BELOW SHOWING DOWN TO LAKE
QUITE PLARGE AREA PLUS FOUND
OLD RD ALONG LAKE ROUND
SOME FLOAT ABOUT LAKE SHORE
LIKE ROCK JAMP. 9-7 HIKED
BACK TO SHOWING ARRIVED BKK
AT SHOWING AT 500 HAD SUPPER
WROTE AND READ. SLIGHT RAIN.

OCT 13

LYNX SOIL - SAMP (LETTER) (DIR)

XS-AS BROWN ROCKY

XS-BB LBR CLAY

XS-CS LBR CLAY-LESS

XS-DS " "

XS-Es 1.5 m NOE LXS-DS
~~NOE~~ ALTERED GROUND.

OCT 14

POST 1

NO. 1

LYNX

N

1200' R

300' L

OCT. 14

1994

PAUL

MALKIN

10 AM

NO. 2

LYNX

OCT. 14

1994

PAUL

MALKIN

12 30 PM

OCT. 15



Got up at 8:30 made breakfast
last night I had a good
scare. Someone drove into my
campsite at 3:30 AM on an ATV
they kept their lights on
my truck for some time
then raked out and left
I don't think being here on
weekends during hunting season
is a good idea (to many folks).
I left camp at 10 and went
to sawing then walked north
on the south canal rd to
where it runs close to the
lake. Located old rd and follow
it along lake shore picked
some more float from beach
came across south canal and
contoured back to sawing
(truck) back at camp at
4:30 AM surprise.

1 SAND POST NO I LIND

2 SAND 47m N DOWN LN

64 m CROSSED OLD
QUIET LN.

3 SAND 64m.

330 m N LYNX
CL. LN. SMALL CRK
1' FEET WIDE
RUNNING
WATER

4 SAND TAKEN
IN CRK.

70 m WEST TO RD FROM
POST #1 70 m WEST
THIS POINT IS 40 m S
OF EXCAVATION (LYNX SHOWING)
LYNX SHOWING IS 70 m
TOTAL EXPOSURE 50 m OF
WHICH HAS KNOWN MINISHEAR

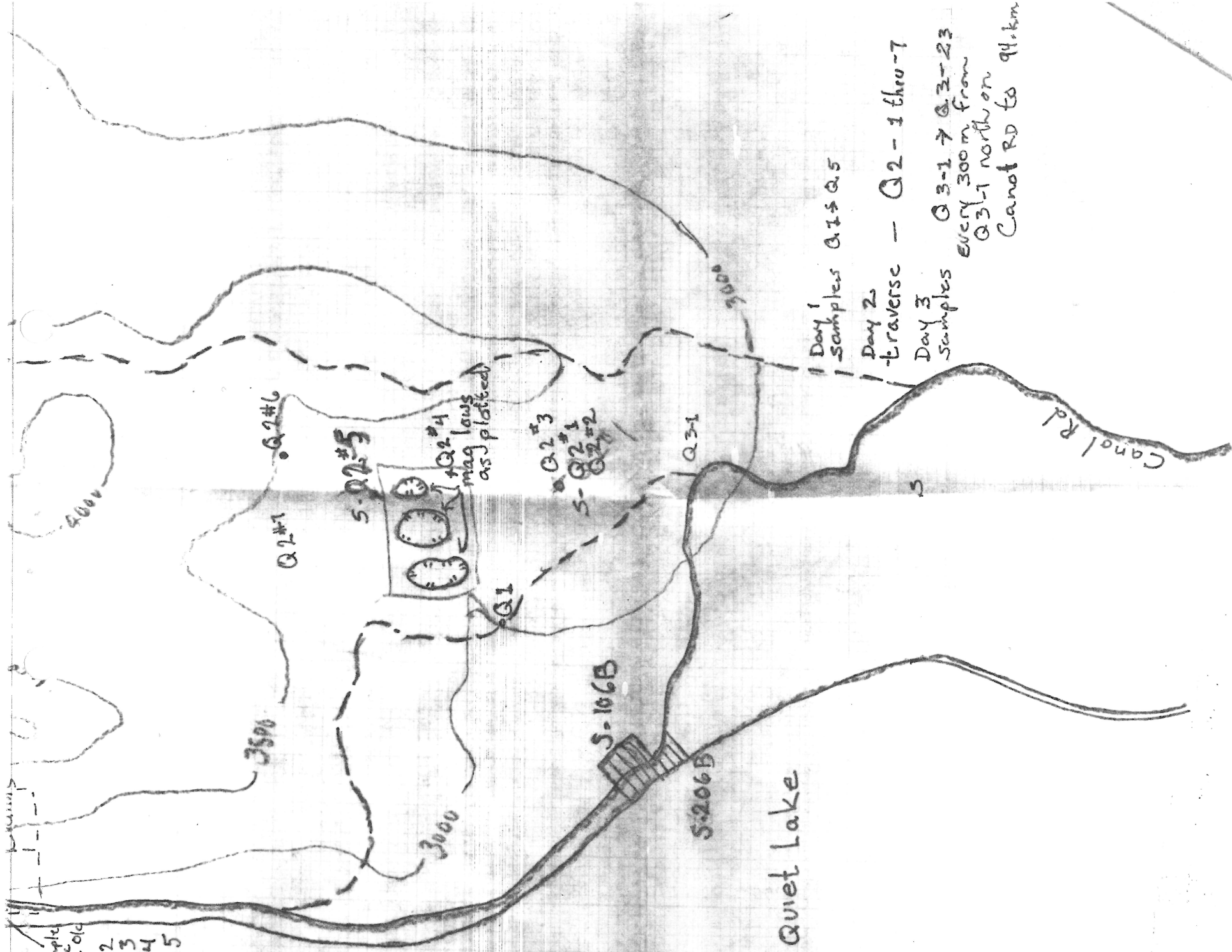
OCT 16

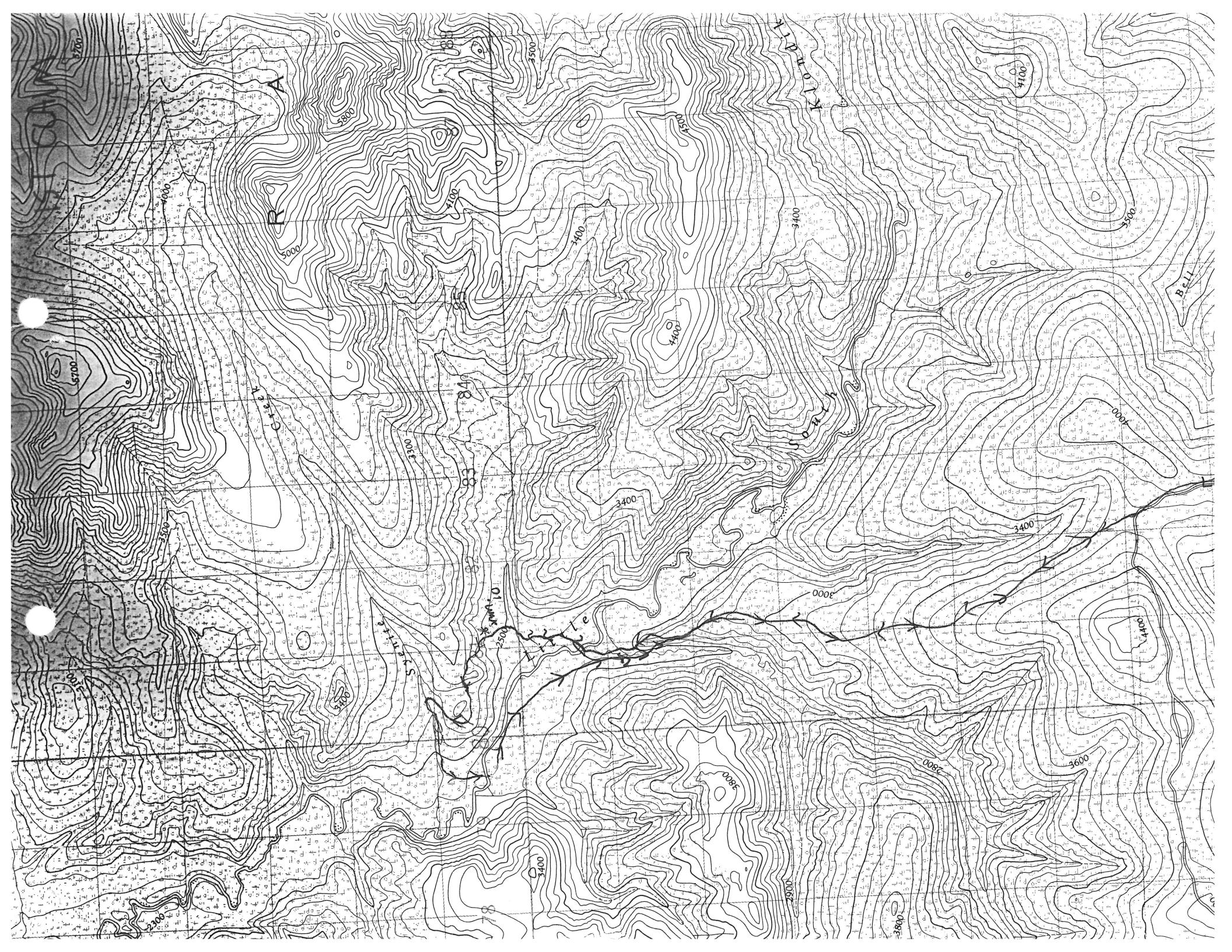
AWOKE AT 800 THIS MORNING
WAITED TILL 830 FOR IT TO GET LIGHT.
HAD BREAKFAST (GOOD) NOT A NICE
DAY TODAY WEATHER WISE. LEFT
CAMP AT 10. WENT TO WHERE I
LEFT HAMMER TO TRY AND
FIND MY ONIES ARMY KIDIES
NO LUCK - MAYBE IT WILL SHOW
UP. TOOK A BETTER LOOK AT THE
NE SLOPE OF THIS KNOLL. THIS
KNOLL IS APPROX 5KM N OF LYNX
SHOWING THERE WERE MAG LONS
RECORDED IN THIS AREA. RAN
ACROSS A COUPLE OF HUNTERS
THING TO LEAVE. BACK TO CAMP,
400 HAD SNIPER ROAD AND
WENT TO BED.

OCT 17 GOT UP AT AT 830 MADE
BREAKFAST TOOK DOWN CAMP
PUT 5gals gas in TRUCK HOPE
IT MAKES IT TO JAKES CORNER. WENT
TO SHOWING 10 TRIED TO HIKE UP TO
TALAS BUT TOMUCK ICE & SNOW HAD
LUNCH LEFT FOR WASH. GOT HOME AT 630

Sample
Loc
Vale Old

Q2
Q3
Q4
Q5

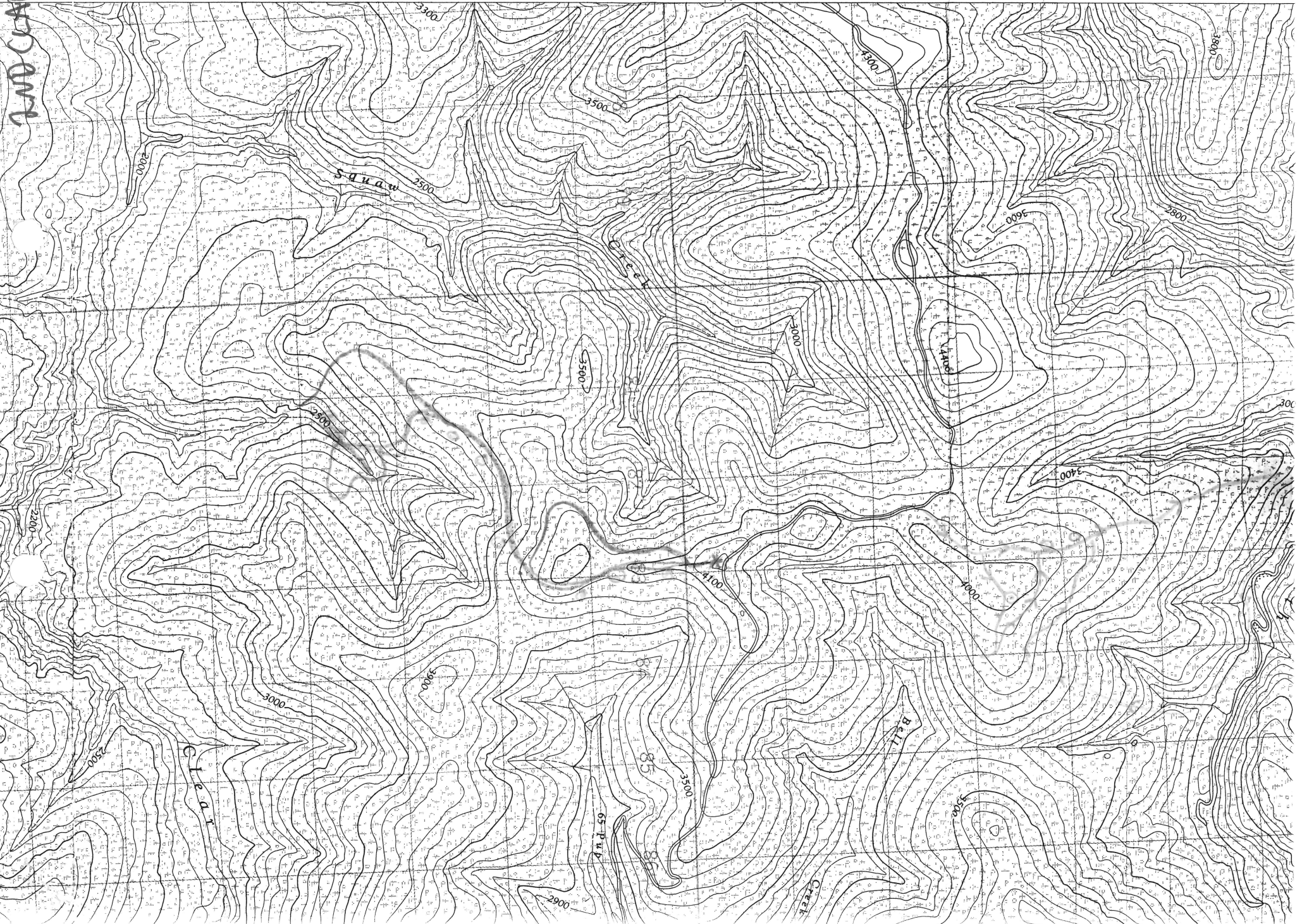


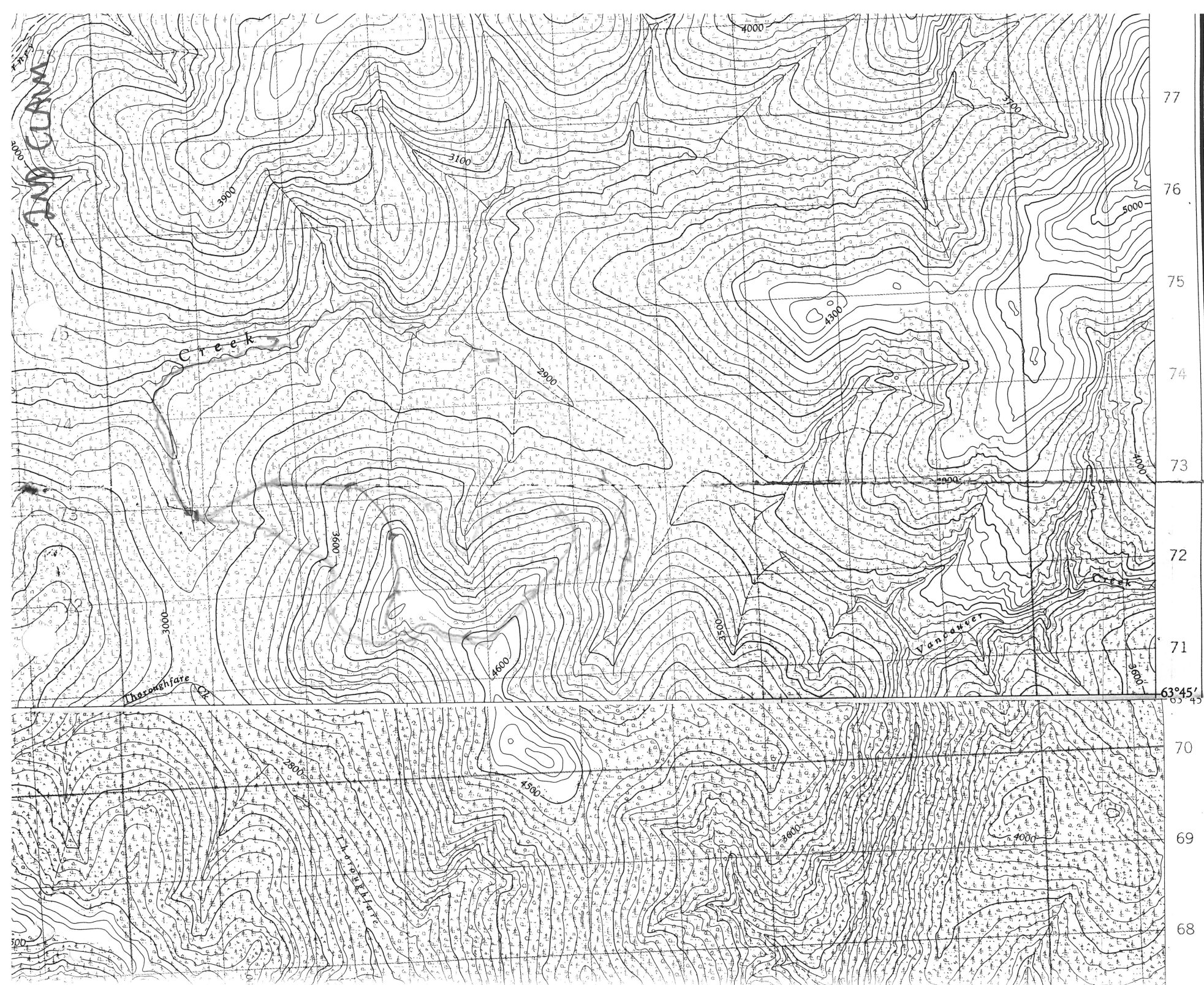


1000 MHP 1157/14 CLEVER CREEK DISTRICT JULY 29 - JULY 30 - 1157/14
CAMP LOCATION * SAMP LOCATIONS O

IND CAMP

74 75 76 77 78 79 80 81 82 83 84 85 86





TOP MAPS 115P 11 MCQUESTEN
TRAVERSE AUG 8
115P 14 CLEAR CRK
TRAVERSE AUG 9
CAMP

↑
N

Index for Maps

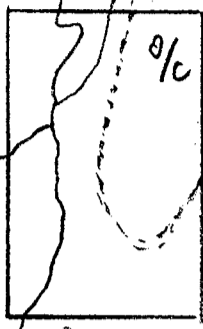
- 1) Mafic volcanic (a) flow
(b) tuff.
(c) chlorite schist.
- 2) Intermediate volcanic (a) flow
(b) tuff
- 3) Felsic volcanic (a) flow
(b) tuff.
- 4) Sediments (a) sandstone
(b) conglomerate
(c) shale
(d) arkose.
- 5) Intrusive.

Symbols

- RH #'s, L #'s, C #'s → sample locations
- Q.F.P. - quartz-feldspar porphyry
- (□) outcrop
- ▬ ridge
- o/a overburden
- ∩ swamp
- / Z strike + dip (bedding, foliation)
- ~ --- ~ intermittent stream
- >--- location + direction of prospective terrain
- bx. breccia
- spher. spherulite

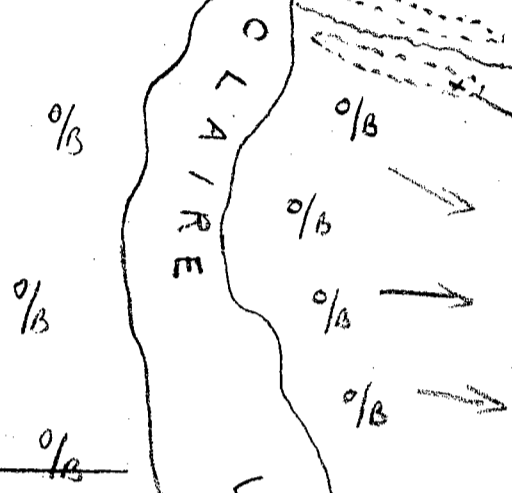
see detailed section scale 1" = 500' (map 3)

3,367, bx., spher.
mylonitic, flow banding
rusty-high iron content?



creek in canyon with rock exposure on canyon walls.

ultra mafic volcano - peridotite? (RH6)
- also 1(a) f.g.r. carb. abundant stringers.



RH7 2(a) flow massive barren pale grey/white.
RH8 1(a) 10% coarse py. blebs (float)

old camp - very big.

RH9 - mylonites, bx's, friction bx's
carb. + chert stockwerkes
- locally 5% py. in felsic rocks
- obvious faulting in the whole area.
- no strikes.

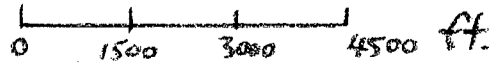
"High" !!! sand hills and ridges - no outcrop.

WEST SIDE OF LAKE
REMOVED FROM STAKING

CLAIRE LK. (north) SHEET

TRAVERSE + SAMPLE LOCATIONS

SCALE: 1/2 mile = 1 inch



N.T.S. 105 E 14

No staking

1a, QFP. interbedded
No strike

RH 4
1(a)?, 3(a)? mafic + felsic rocks
mylonites, spherulites, friction box
chl, carb stockwerke, rocky is
blocky, fractured, loose on canyon
walls. - dangerous.
- No sulfides.

4(b)(d) carb, minor py.
RH 2

3(a) locally porphyritic RH 2, 3

1(a)

hills
too
high

N

QFP? - same as
RH 2 - or porphyritic 3(a)

SEDIMENTARY/VOLCANIC CONTACT.

1(a) pillowed 2(a) massive carb. stockwerkes.

Hills too
high to climb

4 a b d interbeds.

CLAIRE
LAKE

4(b)(d) interbedded - very unconsolidated
- almost like till.

WEST SIDE OF LAKE
REMOVED FROM STAKING

CLAIRE LK. (south) SHEET

2
TRAVERSE + SAMPLE LOCATIONS

SCALE: 1/2 mile = 1 inch.

0 1500 3000 4500 ft.

N.T.S. 105 E 14

mega bog

CLAIRE LAKE AREA (North)

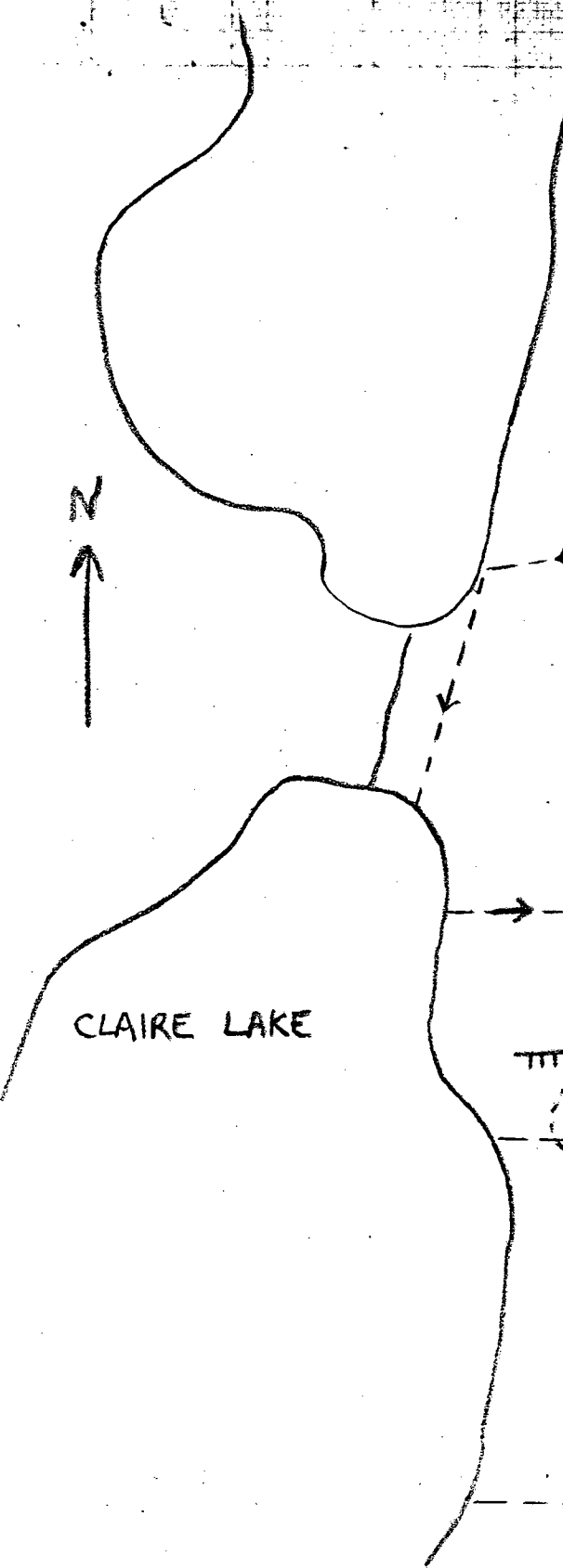
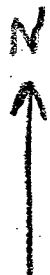
3

DETAILED SECTION

SCALE 1 inch = 500 ft.

TRAVERSE + SAMPLE LOCATIONS

N.T.S. 105 E 14.



x 2a (carb.)

x 4b

x RH 12 - gossan in 4(b) with QV's
x RH 11 - no sulfides.

CLAIRE LAKE

||||| gossan in rock slide RH 10

x 1(a) cgr.

o/B

o/B

Mountains - too high to climb.

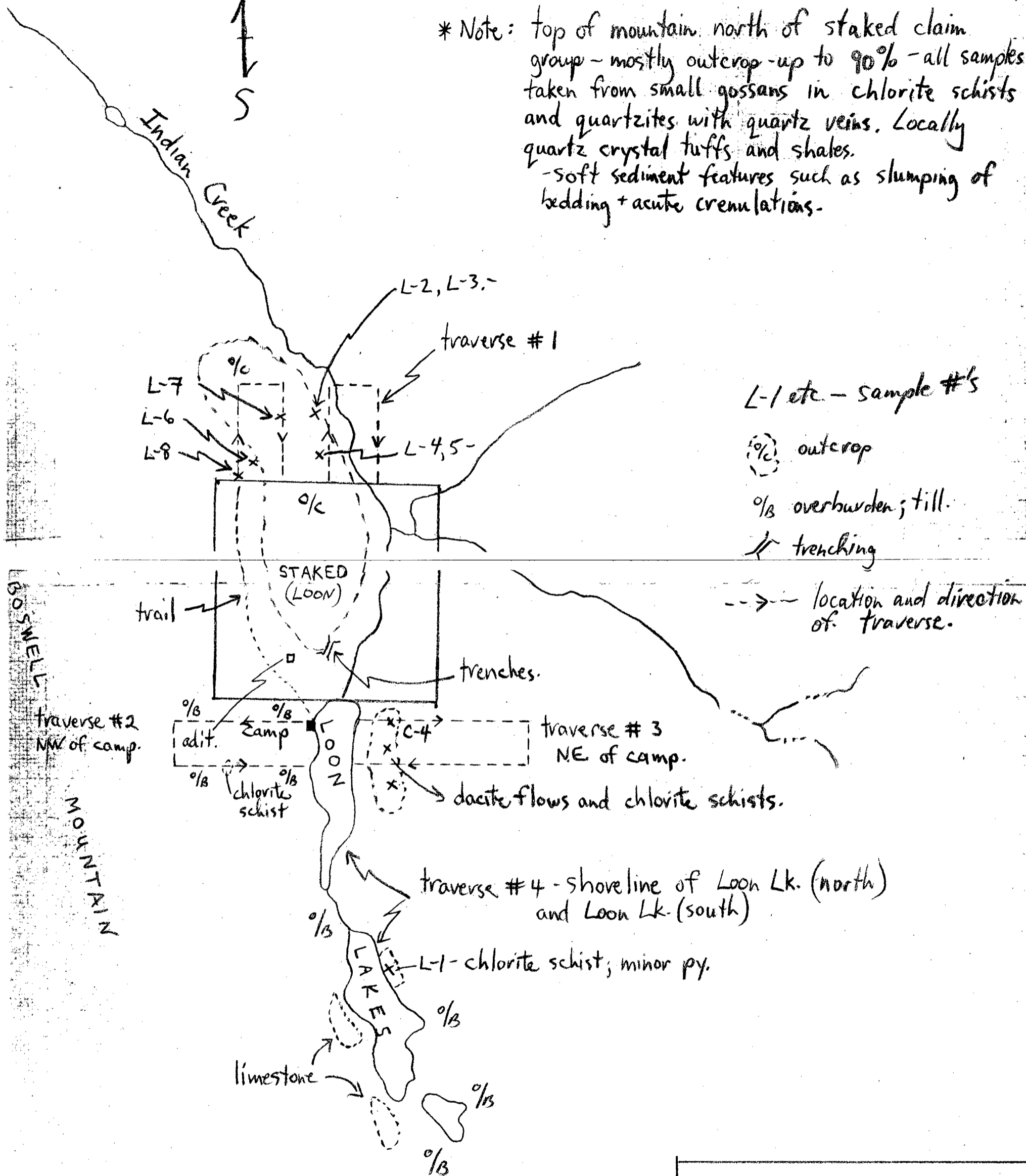
x 4b

x 2(b) + 15cm fragments.

x conglomerate - ultramafic chl./hornblend matrix



* Note: top of mountain north of staked claim group - mostly outcrop - up to 90% - all samples taken from small gossans in chlorite schists and quartzites with quartz veins. Locally quartz crystal tufts and shales.
 - soft sediment features such as slumping of bedding + acute crenulations.



L-1 etc - sample #'s

(%) outcrop

/B overburden; till.

⚡ trenching

--> location and direction of traverse.

traverse #4 - shoreline of Loon Lk. (north) and Loon Lk. (south)

L-1 - chlorite schist; minor py.

LOON LAKES	
4	N.T.S. SHEET 105-E-1
SCALE 1/2 MILE = 1 INCH	
TRAVERSE + SAMPLE LOCATIONS	



ROWLINSON CREEK



3 days traverse east of Victoria Creek - see daily log.

diorite schists, cherts.

MT. MCDADE

1/2 - top of Mt. Metherell. 60
C-10 - granite gneiss, porphyry, minor chert.

gneiss 80
gneiss

C-6, 7, 8 - gneiss, py, qu's 40

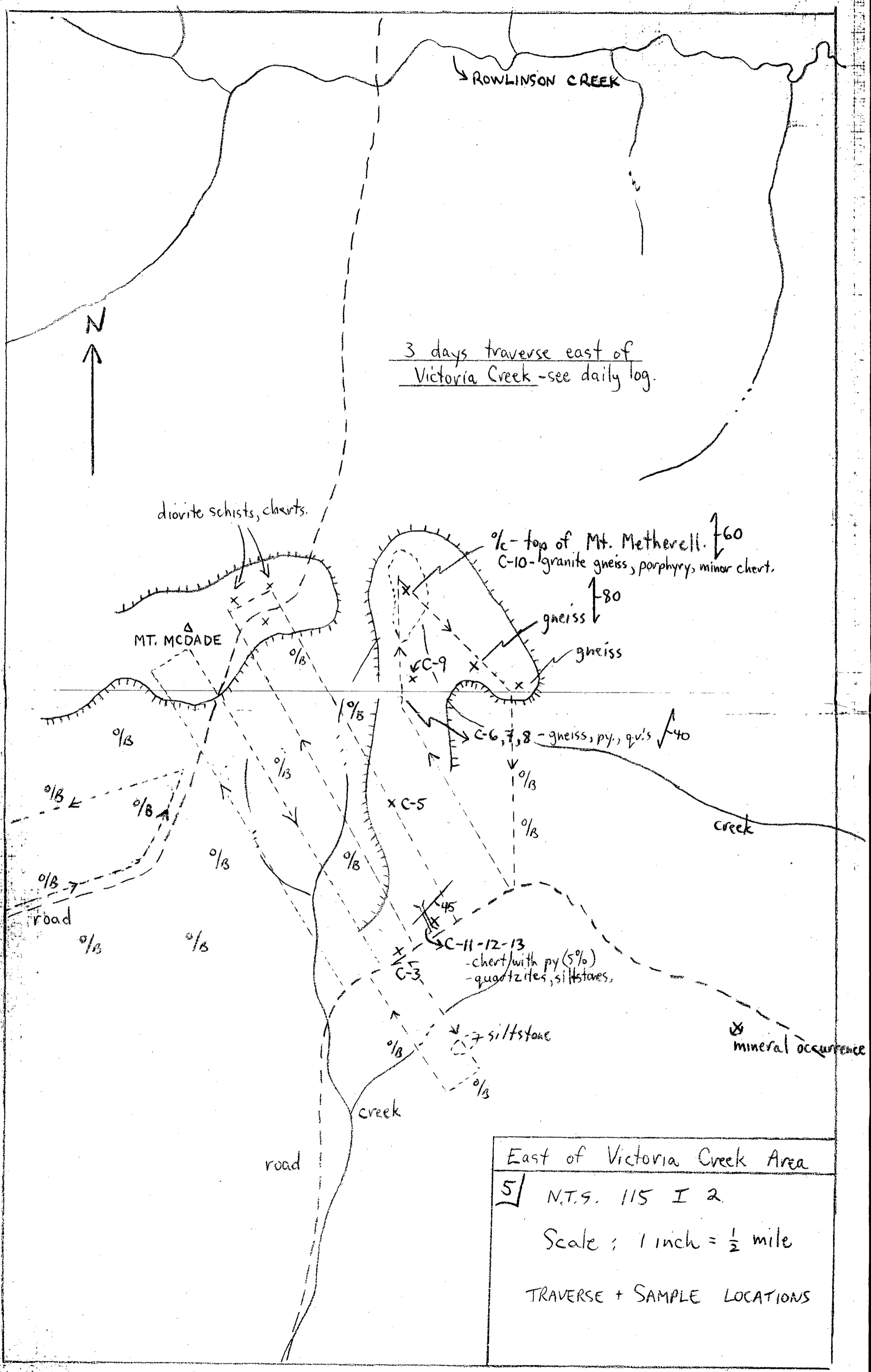
C-5

C-11-12-13
- chert with py (5%)
- quartzites, siltstones.

C-7 siltstone

mineral occurrence

East of Victoria Creek Area
5 N.T.S. 115 I 2
Scale: 1 inch = 1/2 mile
TRAVERSE + SAMPLE LOCATIONS



6

NTS 115 I 3

SCALE: 1 inch = 1/2 mile

TRAVERSE + SAMPLE LOCATIONS

△ VICTORIA MOUNTAIN

STAKED (VIC)

STAKED (GRIZZLY)



STAKED (EEK, ETZEL)

o/B

o/B

o/B

o/B traverse

o/B

Victoria Creek

barren, massive fine-grained basic volcanic - (basalt)

feldspar porphyry

reconnaissance traverse only. (staked ground)

Quartz-feldspar porphyry
5-10% coarse disseminated pyrite.

road →

C-15 felsic porphyry with py
x

C-15

x

x

x

x

x

x

x

x

x

x

x

x

x

x

x

x

x

x

x

x

x

x

x

x

x

x

x

x

x

x

x

x

x

x

x

x

x

x

x

x

x

x

x

x

x

x

x

x

x

x

x

x

x

x

x

x

x

x

x

x

x

x

x

x

x

x

x

x

x

x

x

x

x

x

x

x

x

x

x

x

x

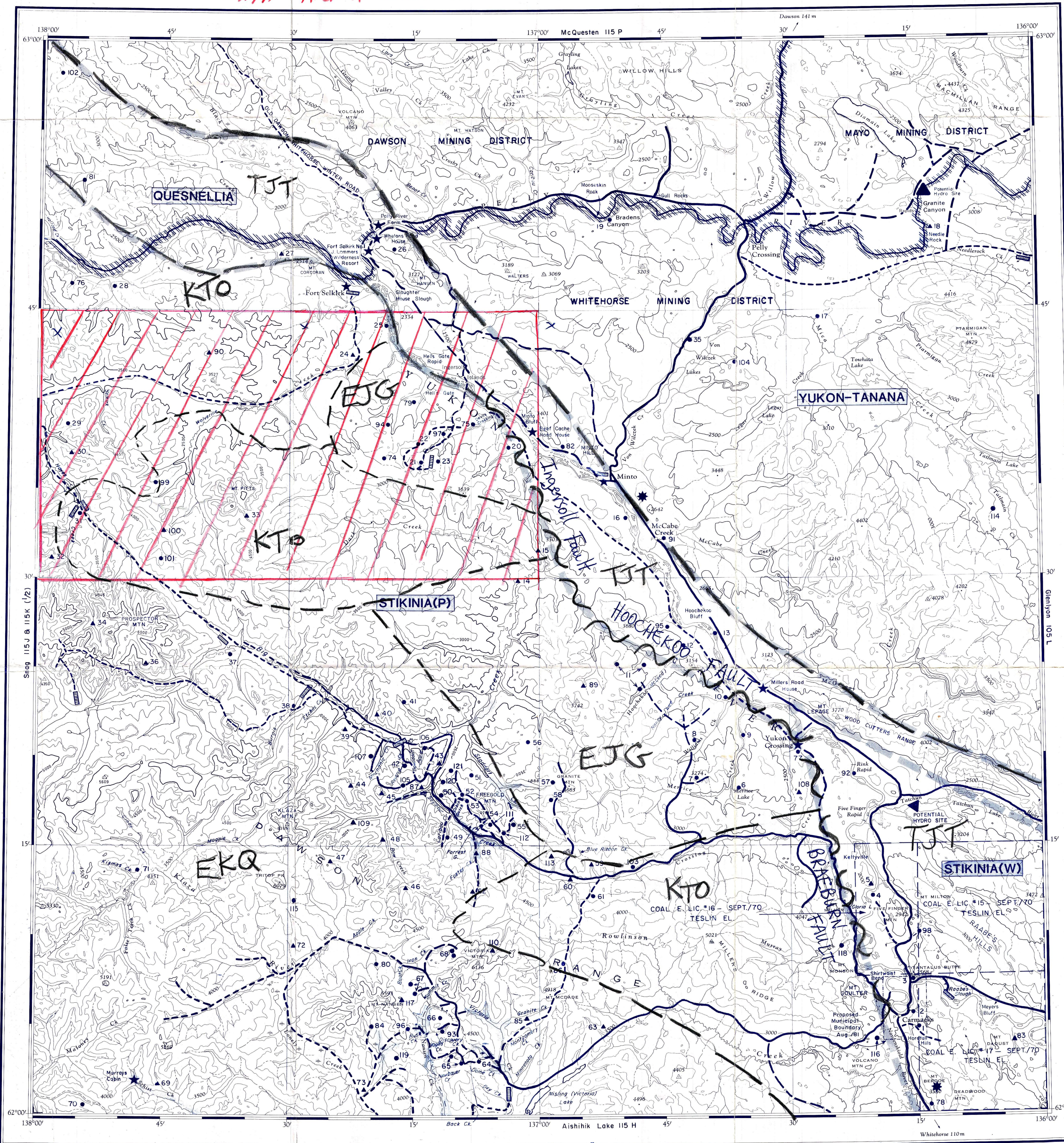
x

x

x

Geology - based on G.S.C. map 1505 A - Tectonic Assemblage of the Cordillera
KTO - upper Cretaceous intermediate/felsic flows/tuffs - "sub aerial"
TJI - upper Triassic lower Jurassic basic volcanics, porphyry, sediments

N.T.S. - Area of concentration 115 I NW



1. SOUTH TANTALUS (Coal)
2. TANTALUS MINE (Coal)
3. TANTALUS BUTTE (Coal)
4. FIVE FINGERS (Coal)
5. CONGLOMERATE
6. BISHI
7. TIASLAR
8. WILLIAMS CREEK (Cu-Vein)
9. MERRICE (Cu-Vein)
10. BONANZA KING (Cu-Vein)
11. STU (Cu, Au, Ag-Un)
12. MAUD
13. HOOCHKEOO (Cu-Un)
14. VERLENE (Cu-Un)
15. LYDEN
16. RENTON
17. TOWHATA (Coal)
18. NEEDLEROCK (Coal)
19. BRADENS CANYON (Cu-Un)
20. COIN (Cu-Vein)
21. MINTO (Cu-Un)
22. PAL (Cu-Un)
23. PAL (Cu-Un)
24. ADERA
25. GRENIER (Coal)
26. PELLY (Cu-Un)
27. NIX
28. MINNESOTA
29. DELTA
30. CHAT
31. TAD (Pb, Zn, Cu-Un)
32. PHELPS (Cu-Un)
33. TERRA
34. FROG (Ag, Au-Vein)
35. WILCZEK
36. STARBIRD (Cu-Un)
37. CASH (Cu, Mo-Ppy)
38. KLAZAN (Cu, Mo-Ppy)
39. COM (Cu-Un)
40. SPOKANE
41. SAMSON
42. REVENUE (Au, Cu-Ppy)
43. COMBO
44. EGG
45. NEWKIRK (Cu, Mo-Un)
46. LIL (Au-Vein)
47. TRITOP
48. EDGAR
49. CARIBOU CREEK (Au-Vein)
50. GRANGER (Au-Vein)
51. CASTLE (Cu-Un)
52. RED FOX (Ag, Pb, Au-Vein)
53. GUDER (Au, Ag-Skn)
54. LAFORMA (Au-Vein)
55. EMMONS HILL (Sb, Au-Vein)
56. MORI
57. GRANITE MOUNTAIN (Cu-Ppy)
58. TINTA HILL (Au, Ag-Vein)
59. ZERO
60. WOLF
61. OPALY (Cu-Ppy)
62. FOSTER (Au-Vein)
63. KINRATISHIN
64. BROWN-McDADE (Au, Ag-Vein)
65. MOUNT NANSEN (Au, Ag-Vein)
66. CYPRUS (Cu, Mo-Ppy)
67. ESANSEE (Ag, Au, Pb-Vein)
68. DIVIDE (Au, Ag-Vein)
69. SCHIST
70. MALONEY (Cu, Mo-Ppy)
71. CHART
72. PHEOBE
73. CHERI
74. COMANCHE (Cu-Un)
75. MORTHAIR
76. TUF (Cu-Un)
77. CROSSING (Cu-Vein)
78. EWING
79. ORI
80. RICO
81. KERR (Mo, Cu-Ppy)
82. LEIS
83. MEYERS (Coal)
84. GOULTER (Cu, Au-Un)
85. CAR (Sb-Vein)
86. ROWLINSON (Sb-Vein)
87. KOOK
88. BATH
89. BEAVON
90. SAM
91. McCABE
92. RINK (Coal)
93. GOULTER (Cu, Au-Un)
94. GIANT (Cu, Au-Un)
95. BLUFF (Cu-Vein)
96. RUSK (Cu, Mo, Ag, Au-Vein)
97. BOYLE
98. HLAVAY (Coal)
99. RAND
100. PITTS (Au-Vein)
101. PANTHER (Au-Vein)
102. LUMBY
103. WHITE ROSE
104. THRASHER
105. MERIDIAN (Ag, Pb, Zn-Vein)
106. HAPPY (Au-Vein)
107. NUCLEUS (Au-Ppy)
108. TOOT (Cu-Un)
109. BOW
110. ROW
111. ANTONIUK (Au-Ppy)
112. WHALE (Au-Vein)
113. FIELD
114. TATLMAIN
115. TOAST
116. DORWARD
117. DIC (Ag-Vein)
118. JONAH
119. DOWS (Au-Vein)
120. ELEPHANT
121. STODDART

Supplementary Geology
Based on G.S.C. Map
1505 A "Tectonic Assemblage
of the Canadian Cordillera"

TJI - upper triassic/lower
Jurassic basic volcanics,
porphyry, and sediments

KTO Upper Cretaceous
intermediate-felsic volcanic
flows, tuffs "non marine
ie sub aerial"

EKG - Cretaceous intrusives
EJG - Jurassic intrusives

**115 I
CARMACKS**

SCALE 1:250,000
1 inch to 4 Miles Approximately

REFERENCE

- Highway
- Tote trail
- Winter trail
- Airstrip (length if known)
- Historic site or recreation area
- Mining district boundary
- Territorial boundary
- Microwave tower

ACCURACY OF LOCATION

- Within 1/2 mile
- 1/2 to 2 miles
- Less than 2 miles

CLASSIFICATION OF DEPOSITS

Vein	Vein	Form	Formational
Skn	Skarn	Vol	Volcanogenic
Ppy	Porphyry	CBL	Copper in basic lava
Mag	Magmatic	Un	Uncertain

..... Placer occurrences

These classifications are discussed at the beginning of the metals index

YUKON MINFILE

REVISED TO APRIL, 1990

Carmacks = 110 miles NNW of Whitehorse

