

# **GRASSROOTS GRUBSTAKE REPORT**

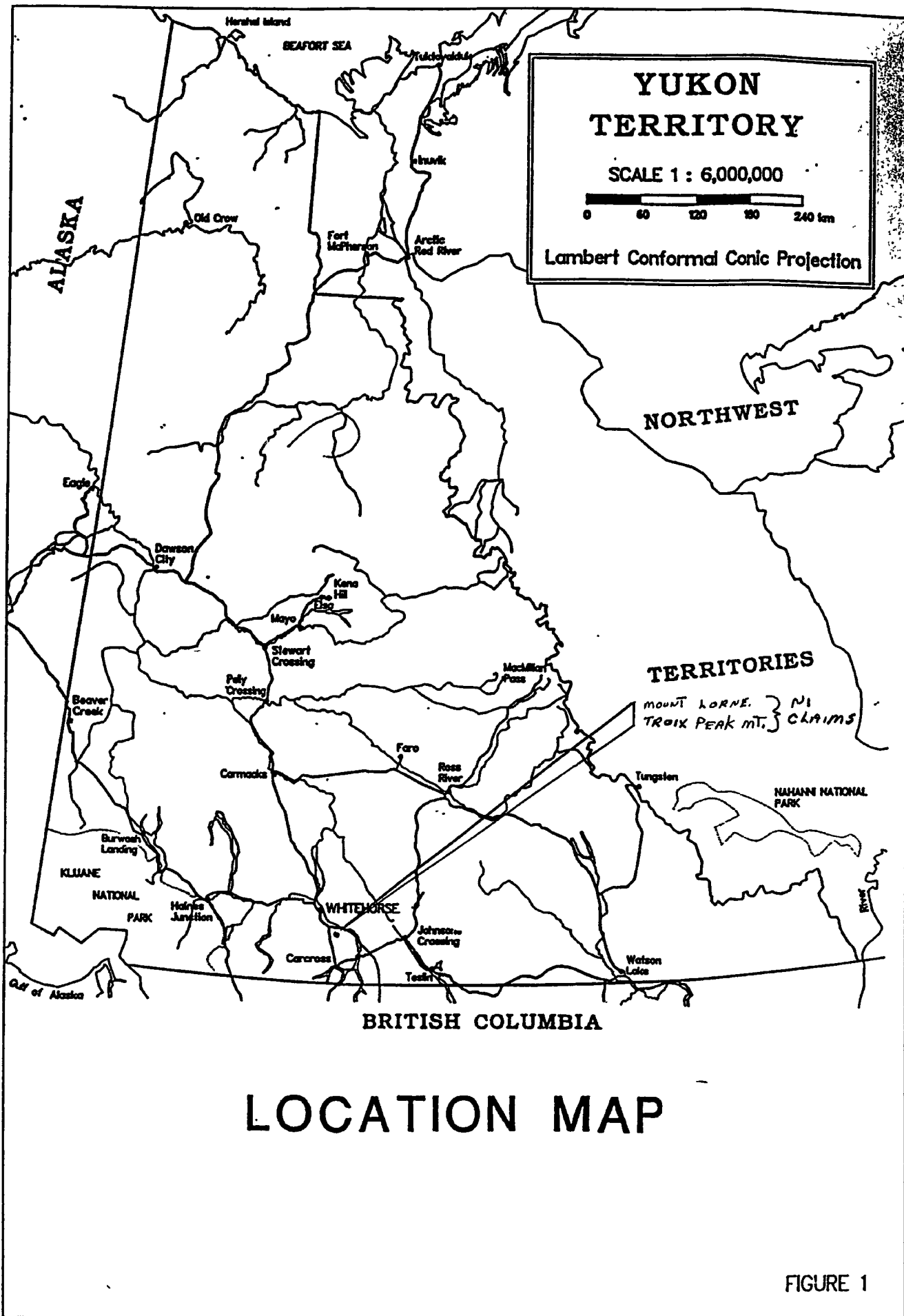
**FILE NO. 95-040**

**FOR 1995 YUKON MINING INCENTIVES PROGRAM**

**APPLICANT: Roger Rondeau**  
242 Squanga Avenue  
Whitehorse, Yukon  
Y1A 3X8  
(403) 633-5210

**PROSPECTOR: Brian J. Carter**  
604A Kathleen Road  
Whitehorse, Yukon  
Y1A 3X8  
2M 3907 White Mountain

**AREA PROSPECTED**  
NTS MAP 105-D-10&7  
**TROIX PEAK MOUNTAIN: Lat. 60° 32.5'N. Long. 134° 46'W**  
**MOUNT LORNE: Lat. 60° 28.8'N, Long. 134° 45'W**



**YUKON  
TERRITORY**

SCALE 1 : 6,000,000

0    60    120    180    240 km

Lambert Conformal Conic Projection

**TERRITORIES**  
 MOUNT LORNE. } NI  
 TRIOX PEAK MT. } CLAIMS

# LOCATION MAP

FIGURE 1

# TABLE OF CONTENTS

<b>1. SUMMARY.....</b>	<b>1</b>
<b>2. TROIX PEAKS MOUNTAIN AND MOUNT LORNE AREA</b>	
<b>Location.....</b>	<b>2</b>
<b>Access.....</b>	<b>2</b>
<b>Regional Geology.....</b>	<b>2</b>
<b>Geological History.....</b>	<b>2</b>
<b>Local Geology.....</b>	<b>2</b>
<b>3. GEOCHEMICAL SURVEY.....</b>	<b>4</b>
<b>4. CONCLUSIONS AND RECOMMENDATIONS.....</b>	<b>5</b>
<b>5. GRUBSTAKE EXPENSE SUMMARY.....</b>	<b>6</b>
<b>6. APPENDIX A - ANOMALOUS AU LOCATIONS.....</b>	<b>7</b>
<b>7. APPENDIX B - CLAIM LOCATIONS.....</b>	<b>8</b>
<b>8. APPENDIX C - GRAB SAMPLE LOCATIONS AND LOCAL     GEOGRAPHY.....</b>	<b>9</b>
<b>9. APPENDIX D - ASSAY RESULTS.....</b>	<b>10</b>

# **SUMMARY**

## **TROIX PEAKS MOUNTAIN AREA**

The Troix Peaks Mountain area prospected produced promising results both from the geology observed and high assay results in gold (.633 oz./ton). The area is dominated by thick beds of light grey limestone, limestone conglomerate and thin beds of rusty black calcareous siltstone. This stratigraphy is cross cut by at least three series of felsic and intermediate dykes. The late phase contains fairly coarse-grained, stubby arsenopyrite, which grades from sparse disseminations to local dense, massive accumulations of greater than 50%.

Six claims were staked over the above showing.

## **MOUNT LORNE AREA**

The geology of the Mount Lorne area revealed numerous dykes of fine grain rhyolite, quartz eye rhyolite, porphories, andesite felsopare porphory, and a coarse grained diorite or monzonite. The dykes cut rusty coated hornfels. The highest gold assays were obtained from a dark hornfel cut by rhyolite stringers (898 ppb.).

# **TROIX PEAKS MOUNTAIN AND MOUNT LORNE AREA**

## **LOCATION**

Map 105-D-10 LAT. 60° 32.5' LONG. 134° 46' - TROIX PEAKS MOUNTAIN

Map 105-D-7 LAT. 60° 28.8' LONG. 134° 45' - MOUNT LORNE

## **ACCESS**

- 20 km SE of Whitehorse via Alaska Hwy
- 7 km S via Klondike Hwy
- 6 km E via helicopter to 4500 ft. elevation
- or 6 km E via old cat road (4x4 ATV)

## **REGIONAL GEOLOGY**

Laberge Group Sediments (unit 4a)

Lewes River Group Sediments and igneous flows (unit 3a and 3c)

Coast Range Intrusions (granodiorite unit 8a)

Hutshi Group, andesite, rhyolite flows, breccias and tuffs (unit 7)

## **GEOLOGIC HISTORY**

The are of interest has been staked 11 times from 1959 to 1980. Six bulldozer trenches have been located but there is conflicting information in mine files by who and when they were done.

## **LOCAL GEOLOGY**

**TROIX PEAKS MOUNTAIN - NI claims**

The property is hosted within a stratigraphic sequence of the Upper Triassic Lewes River Group that is dominated by resistant, thick massive beds of light grey limestone, limestone conglomerate with thin beds of rusty weathering black calcareous siltstone (130° /45° NE). This stratigraphy is cross-cut by at least three series of felsic and intermediate dykes. The measured trends of dykes include 010°, 050° and 130°. The limestone is locally sheared out along a strike of 140°, in particular adjacent to the mineralized zone.

All dyke phases are rich in plagioclase, quartz and biotite phenocrysts. The youngest apparent dyke phase appears to be a residual phase of the second and has a dark matrix. This late phase locally contains fairly coarse-grained, stubby arsenopyrite which grades from sparse disseminations to local dense, massive accumulations of greater than 50%. There is some minor alteration in the form of bleaching and sericite formation adjacent to late, cross-cutting, thin white quartz veins which are barren of mineralization. The mineralized region trends for approximately 20 meters although there are other, more distal patches of mineralized rock.

The dykes could be associated with the Late Cretaceous Mount Lorne pluton to the south (~75 Ma) or the mid-Cretaceous Whitehorse and Mount McIntyre plutons (~110 Ma) to the northwest. Despite the significant amount of igneous rocks in the area, the host sediment have experienced little thermal alteration.

## MOUNT LORNE

The Mount Lorne area prospected and sampled is in close proximity to the Late Cretaceous Mt. Lorne Pluton (~75 ma). Thick beds of rusty cherty hornfells striking E to W are cut by numerous dykes of considerable width. The different dykes seem to trend in  $15^{\circ}$  N.E. strike and dip  $60^{\circ}$ . The dykes vary geologically from fine grained rhyolite to quartz eye ryolite porphories, andesite feldspare porphory and a course grained diorite or monzonite. All samples taken from the dykes showed fine decimated sulphides (pyrite, pyrrhotite). S.E. of the volcanic rocks is a fault trending North to South. Bordered on the West of the fault is the aforementioned volcanic system and on the east of the fault is a large sequence of banded altered siltstone. The siltstone is uniformly banded with dark and light bands. The lighter bands are sulfide enriched (pyrite).

## **GEOCHEMICAL SURVEY**

### **NI Claims (Troix Pks Mt.)**

A total of 25 rock samples were assayed .

5 samples were reassayed.

Work was done by N.A.L. Laboratories LTD. Whitehorse, YT.

23 SAMPLES : Au + 30, Au 15 g. Fire Assay, A.A.S. Finish  
30 Element I.C.P. Aqua Regia Digestion.

2 SAMPLES : Pt + 32, Au Pt Pd 30 g. Fire Assay , A.A.S. Finish  
30 Element I.C.P., Aqua Regia Digest.

5 SAMPLES, Reassay Au IAT Fire Assay

Of the above assays 6 samples where above 300 ppb Au. The best being sample NI-95-12B (all .633 oz/ton.) Note: As the Au. values increase so do the As, Bi, Sb.

### **Mt. Lorne Samples**

A total of 9 rock samples were assayed.

9 samples: Au + 30, Au 15g. Fire Assay, AAS Finish.  
30 Element I.C.P. Aqua Regia Digestion.

2 samples produced anomalous Au values.

138 ppb Au in a buff colored silicified hornfel

898 ppb Au rusty coated dark hornfel rhyolite stringers.

## CONCLUSIONS AND RECOMMENDATIONS

### TROIX PEAKS MTN. (NI CLAIMS)

Six claims were staked over this showing. High Au values (.633 oz/ton) were obtained from quartz arsenic veins in felsic and intermediate dykes. There is a potential for a wide spread gold bearing felsic intrusive system with possibility of several mineralogical settings (skarn, fracture, controlled veining).

The Au values and the geological exposure makes the NI claims and optional property More prospecting and a soil sample grid is recommended.

### MT. LORNE AREA

The Mt. Lorne area produced two anomalous gold values (898 ppb in dark colored hornfels cut by rhyolite stringers and 139 ppb in what appears to be either a buff colored fine grained silicified hornfel or rhyolite). Numerous dykes, diorite ormonzinite, feldspare quartz porphories, quartz eye rhyolite porphories and grand diorite, all containing semi-coarse to fine grained sulphides were observed cutting rusty hornfels. The above area is within 1 km. of the Late Cretaceous Mount Lorne pluton (~75 ma). This area has the mineralogical settings for a number of possible ore deposits ( vein hosted, porphyry and skarn). More prospecting in this area is recommended.

**1995 YUKON MINING INCENTIVES PROGRAM**  
**GRUBSTAKE EXPENSE SUMMARY**

<b>EXPENSE CATEGORY</b>	<b>TROIX PEAK MTN</b>	<b>MT LORNE</b>	<b>OVERALL</b>	<b>TOTAL</b>
Living ExpenseS	1,328.80	441.60		1,770.40
Prospector's Wages	3,600.00	1,200.00		4,800.00
Helicopter Rental	753.10	717.97		1,471.07
Radio Rental	90.00	35.00		125.00
Truck Rental	1,182.00	458.00		1,640.00
A.T.V. Rental	1,500.00			1,500.00
Chain Saw Rental	450.00			450.00
Trailer Rental	450.00			450.00
Assay	508.52	291.30		799.82
Office Supplies			176.90	176.90
Prospecting Report			300.00	300.00
Fuel Costs			260.00	260.00
<b>TOTAL</b>	<b>9,862.42</b>	<b>3,143.87</b>	<b>736.90</b>	<b>13,743.19</b>

**ELIGIBLE AMOUNT: 75% OF \$ 13,500.00 = \$ 10,125.00**  
**AMOUNT RECEIVED = \$ 7,526.47**  
**AMOUNT OWING = \$ 2,598.53**

## **APPENDIX A**

### **ANOMALOUS AU LOCATIONS**

TROIX PEAKS MT.

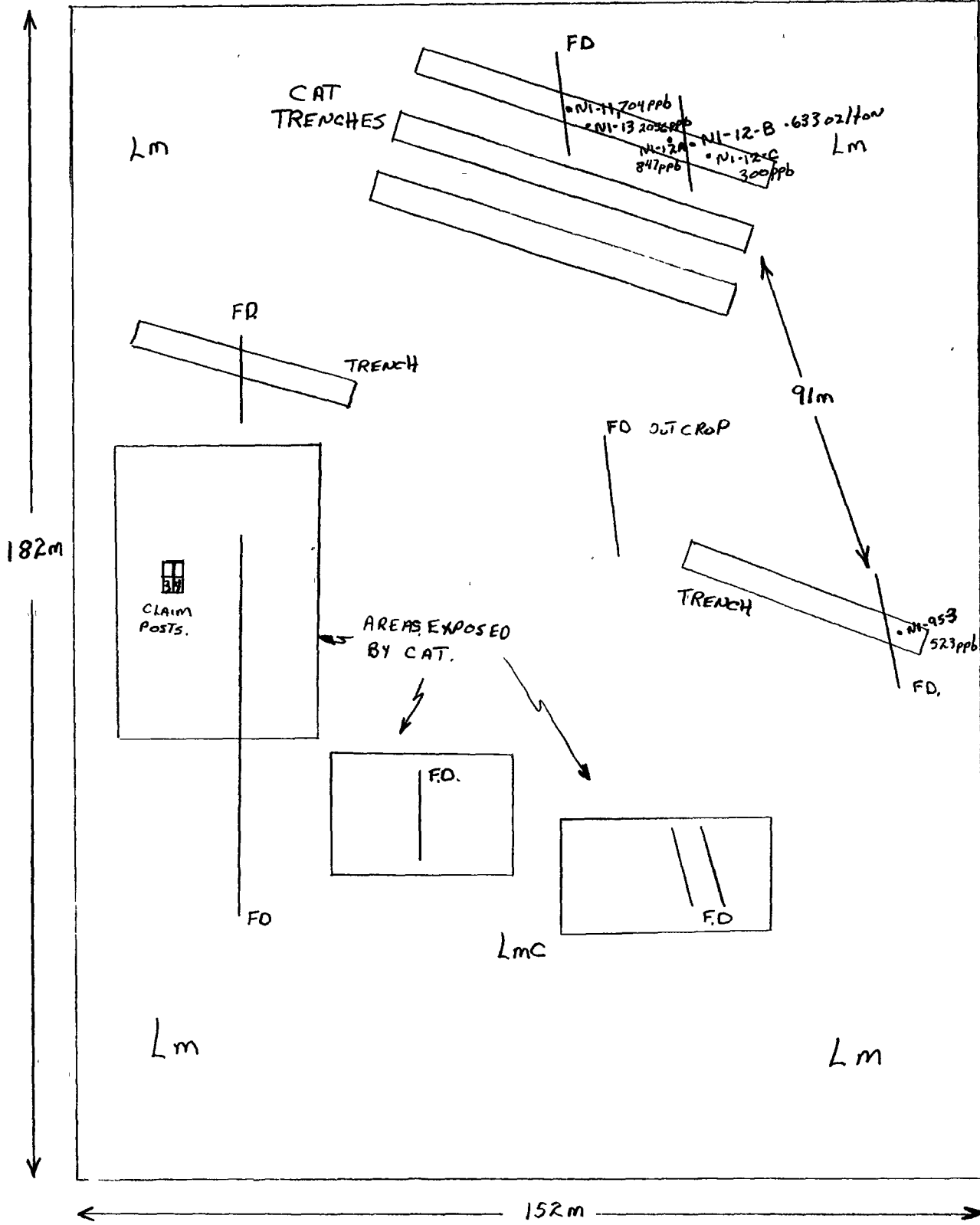
105-D-10, 60°32' 13N°46'

ANOMALOUS AU ASSAY LOCATIONS

FD. FELSIC DYKE

Lm. - LIMESTONE BEDDING

LmC - LIMESTONE CONGLOMERATE



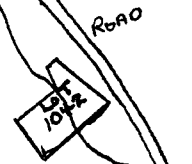
DISTANCES APPROX.  
CLAIM POSTS; NI CLAIMS

**APPENDIX B**  
**CLAIM LOCATIONS**

3816

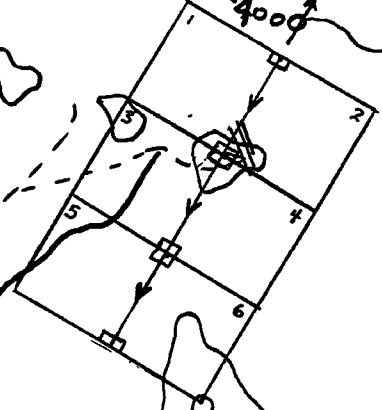


105-D-10, Scale 1:30,000  
NI CLAIMS 1 to 6  
/// TRENCHES



OLD CAT ROAD

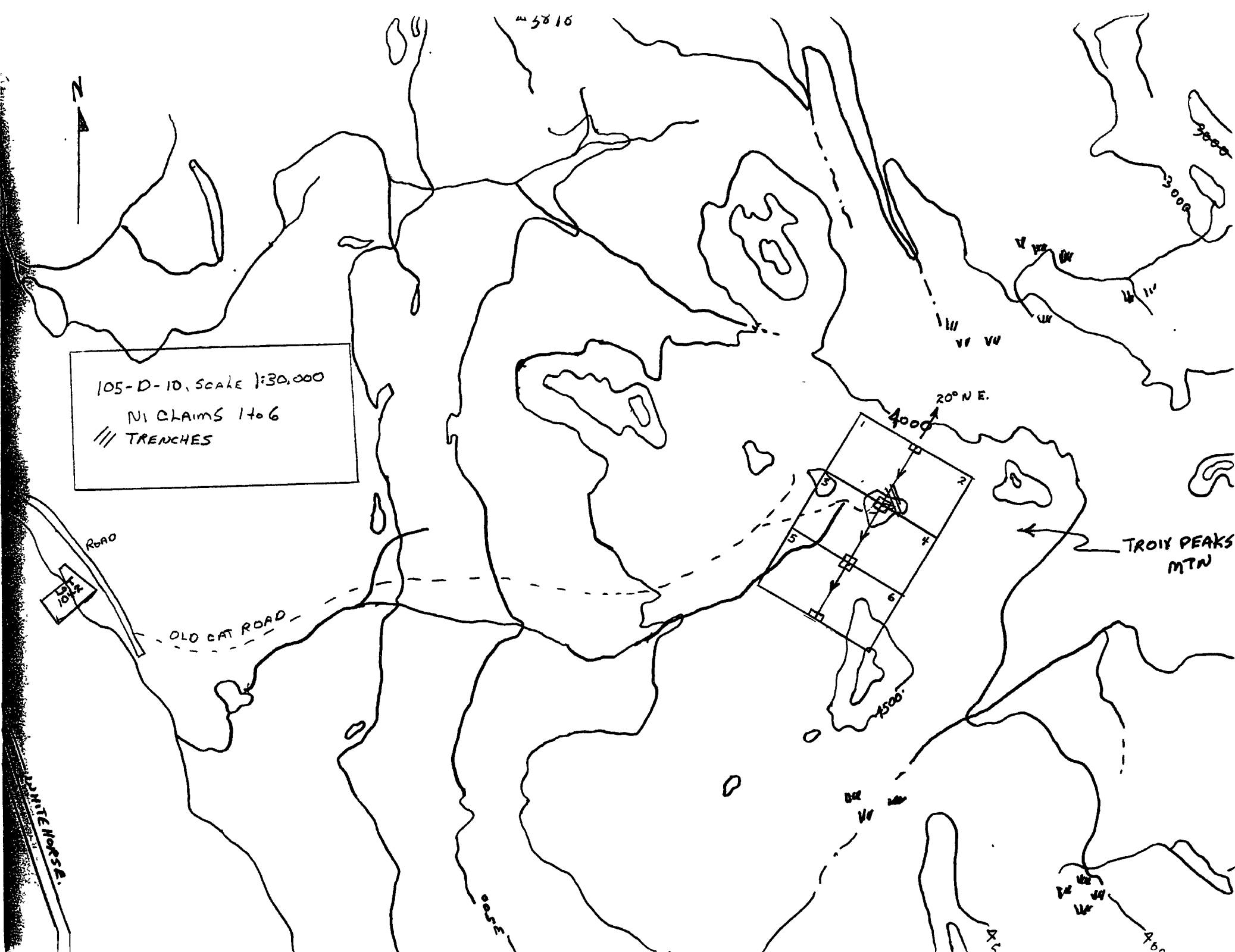
WHITE HORSE E.



TROY PEAKS MTN

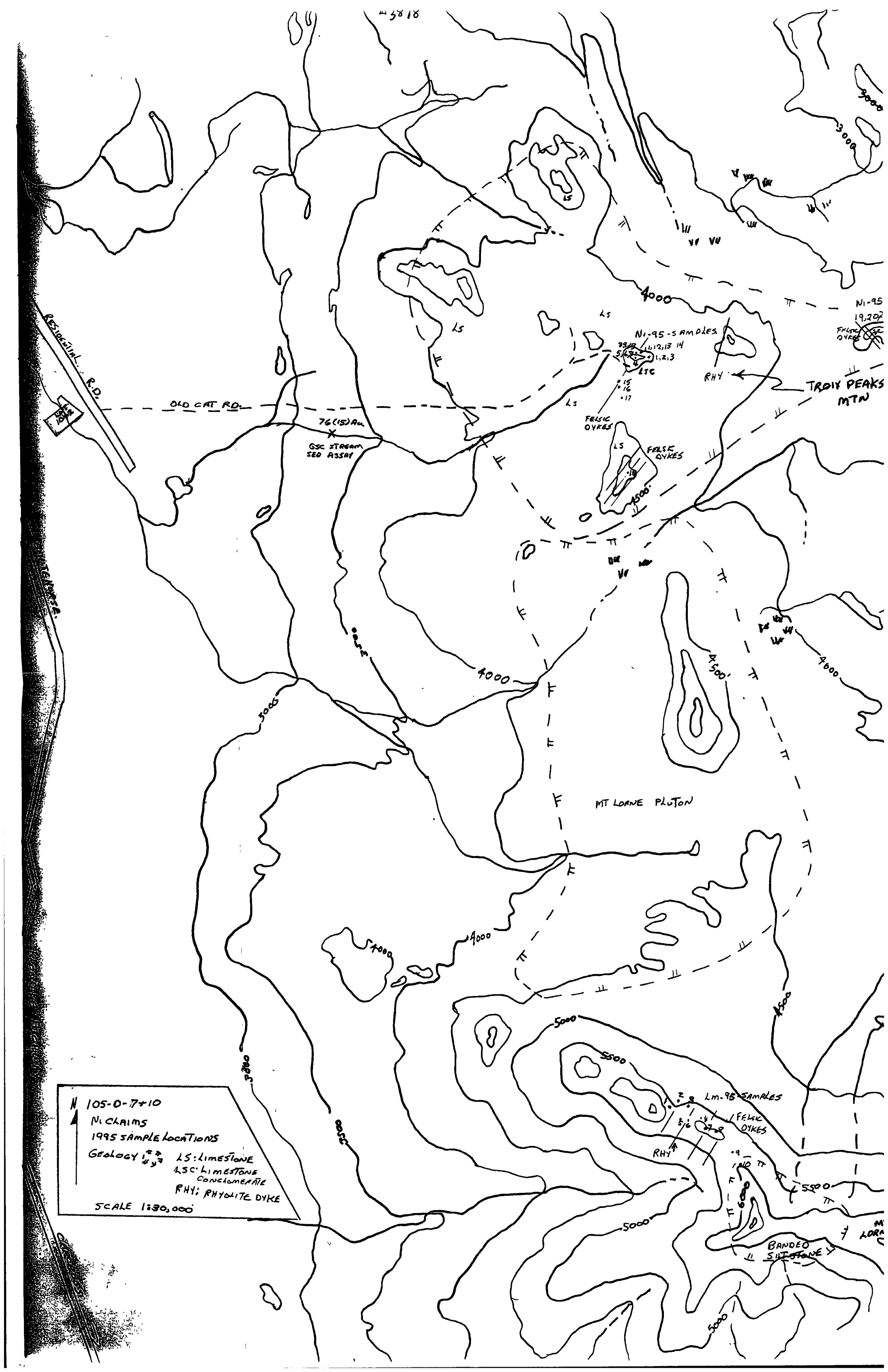
3000

400



## **APPENDIX C**

### **GRAB SAMPLE LOCATIONS AND LOCAL GEOGRAPHY**



#3818

Ni-95  
19,202  
FELSIC  
DYKES

TROY PEAKS  
MTN

76 (15) Av.  
GSC STREAM  
SED ASSAY

MT LORNE PLUTON

105-0-7+10  
Ni CLAIMS  
1995 SAMPLE LOCATIONS  
GEOLOGY  
 LS: LIMESTONE  
 LSC: LIMESTONE  
 CONGLOMERATE  
 RHY: RHYOLITE DYKE  
 SCALE 1:30,000

Lm-95 SAMPLES

FELSIC  
DYKES

RHY

100 TT

5500

BANDED  
SILTSTONE

MT LORNE

## **APPENDIX D**

### **ASSAY RESULTS**

07/08/95

Assay Certificate

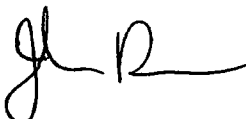
Page 1

Brian Carter

WO#15283

Sample #	Au ppb
N1-95-1	<5
N1-95-2	<5
1 N1-95-3	523
N1-95-4A	9
N1-95-4B	8
N1-95-4C	25
N1-95-5	<5
N1-95-6	<5
N1-95-7	9
N1-95-8	<5
N1-95-9	61
N1-95-10	<5
2 N1-95-11	704
N1-95-12C	300
3 N1-95-13	2056
N1-95-14	31
N1-95-15B	5
N1-95-15C	11
N1-95-16B	17
N1-95-17	7
N1-95-18	10

Certified by



19/10/95

Assay Certificate

Page 1

Brian Carter

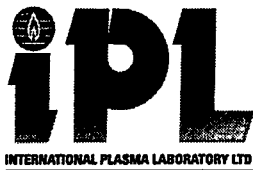
WO#15387

Sample #	Au ppb	Au oz/ton
LM-95-1	898	
LM-95-2	139	
LM-95-3	23	
LM-95-4	11	
LM-95-5	9	
LM-95-6	<5	
LM-95-7	9	
LM-95-8	<5	
LM-95-10	19	
<del>NI</del> LM-95-19	18	
<del>NI</del> LM-95-21	37	
NI-95-3		0.016
NI-95-11		0.023
NI-95-12A		0.027
NI-95-12B		0.633
NI-95-13		0.064

Certified by







**CERTIFICATE OF ANALYSIS**  
**iPL 95H0405**

2036 Columbia Street  
Vancouver, B C  
Canada V5Y 3E1  
Phone (604) 879-7878  
Fax (604) 879-7898

Client: Northern Analytical Laboratories  
Project: 15283 2 Pulp

iPL: 95H0405

Out: Aug 11, 1995  
In: Aug 04, 1995

Page 1 of 1  
[056915:02:29:59081195]

Section 1 of 2  
Certified BC Assayer: David Chiu

Sample Name	Au ppb	Pt ppb	Pd ppb	Ag ppm	Cu ppm	Pb ppm	Zn ppm	As ppm	Sb ppm	Hg ppm	Mo ppm	Tl ppm	Bi ppm	Cd ppm	Co ppm	Ni ppm	Ba ppm	W ppm	Cr ppm	V ppm	Mn ppm	La ppm	Sr ppm	Zr ppm	Sc ppm	Ti %	Al %	Ca %	Fe %
N1-95-12-A	847	<	<	0.6	222	10	31	1.8%	11		3	<	8	<	32	10	26	<	69	78	235	3	52	2		0.09	1.99	0.63	4.46
N1-95-12-B	24m	<	<	4.9	6	65	15	26%	220		6	<	229	<	942	27	<	<	29	45	97	<	36	5		0.04	0.86	0.23	21%

Min Limit 2 15 5 0.1 1 2 1 5 5 3 1 10 2 0.1 1 1 2 5 1 2 1 2 1 1 1 0.01 0.01 0.01 0.01  
 Max Reported\* 9999 10000 10000 99.9 20000 20000 20000 9999 9999 9999 9999 999 999 99.9 999 999 9999 999 9999 999 9999 9999 9999 9999 999 99 1.00 9.99 9.99 9.99  
 Method FAAA FA/AAS FA/AAS ICP ICP ICP ICP ICP ICP ICP ICP ICP ICP ICP ICP ICP ICP ICP ICP ICP ICP ICP ICP ICP ICP ICP ICP ICP ICP ICP ICP  
 —No Test ins=Insufficient Sample S=Soil R=Rock C=Core L=Silt P=Pulp U=Undefined m=Estimate/1000 %=Estimate % Max=No Estimate  
 International Plasma Lab Ltd. 2036 Columbia St. Vancouver BC V5Y 3E1 Ph:604/879-7878 Fax:604/879-7898

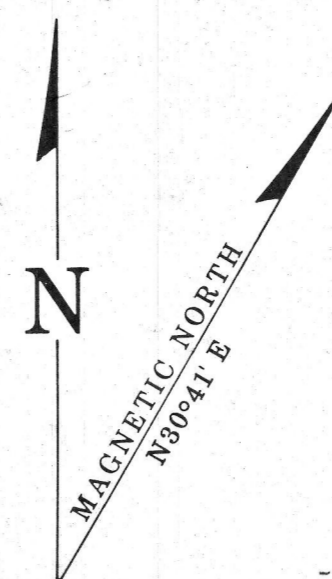
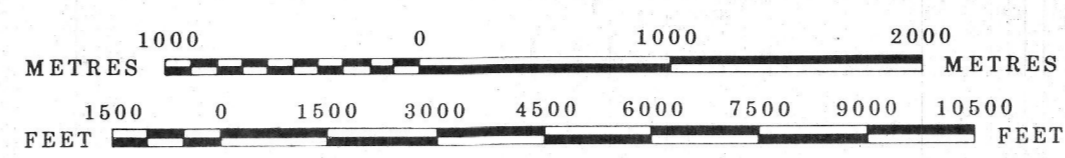




105D-10 75-240  
**QUARTZ & PLACER**

LATITUDE 60°30' TO 60°45'  
 LONGITUDE 134°30' TO 135°00'  
 ISSUED UNDER THE AUTHORITY OF THE MINISTER  
 OF  
 INDIAN AFFAIRS AND NORTHERN DEVELOPMENT

SCALE 1:30,000



**NOTE:**  
 THIS MAP IS ISSUED AS A PRELIMINARY GUIDE  
 FOR WHICH THE DEPARTMENT OF INDIAN AFFAIRS  
 AND NORTHERN DEVELOPMENT WILL ACCEPT NO  
 RESPONSIBILITY FOR ANY ERRORS, INACCURACIES  
 OR OMISSIONS WHATSOEVER.

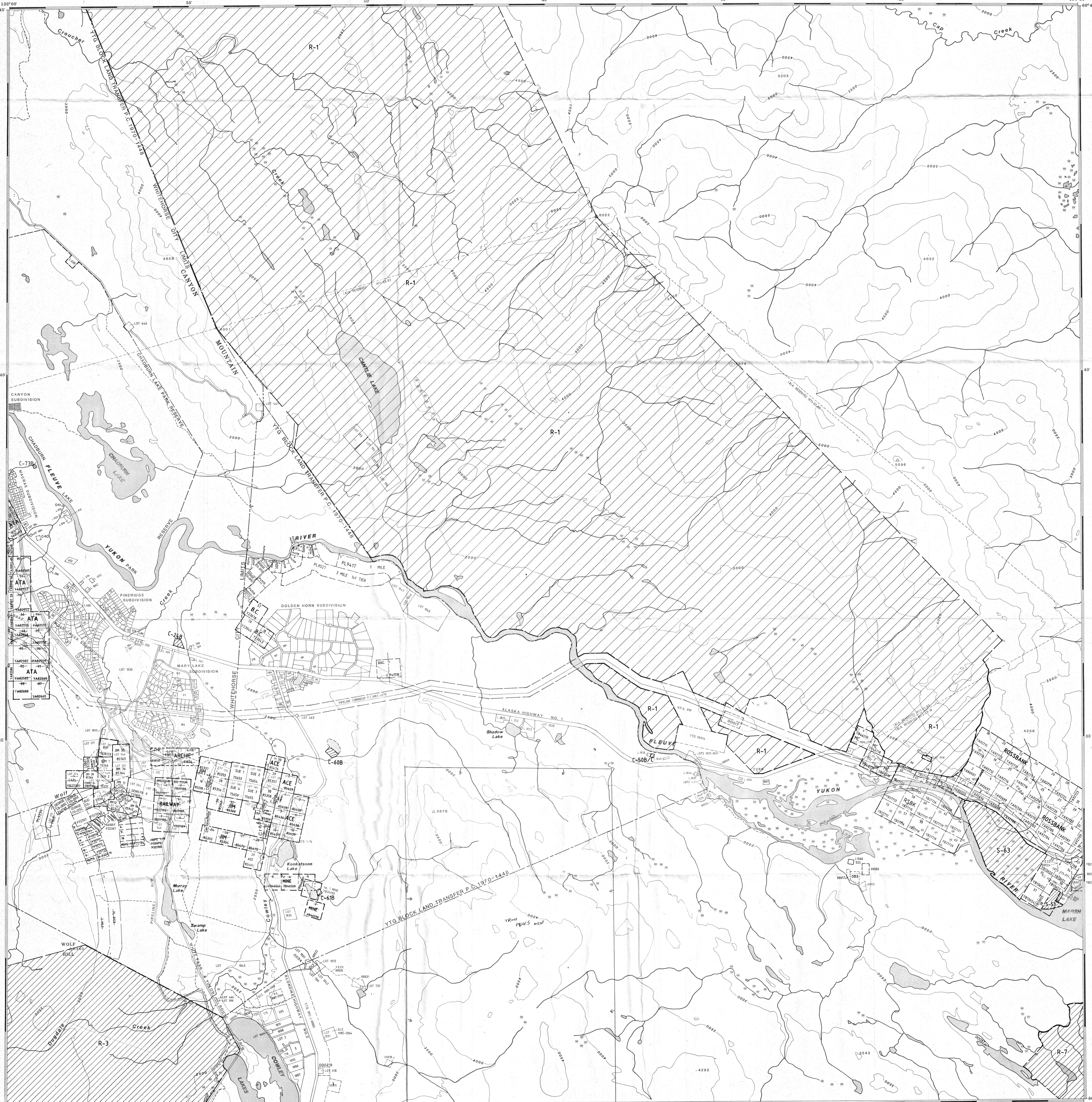
TOPOGRAPHY COMPILED FROM 1:50,000  
 NATIONAL TOPOGRAPHIC SERIES.  
 CONTOUR INTERVAL 500 FEET.  
 SURVEY INFORMATION COMPILED FROM  
 LEGAL SURVEYS, BY DRAFTING SERVICES.

Note: Entry on certain lands is withdrawn from staking  
 in cross-hatched areas to facilitate the settlement  
 of Native Land Claims without prejudice to Existing  
 Surface and Subsurface Rights.

105D-14	105D-15	105D-16
105D-11	105D-10	105D-9
105D-6	105D-7	105D-8

Canada

WHITEHORSE 6 NOVEMBER 1989



# SHEET 105-D-7

LATITUDE 60° 15' To 60° 30'  
LONGITUDE 134° 30' To 135° 00'

95840

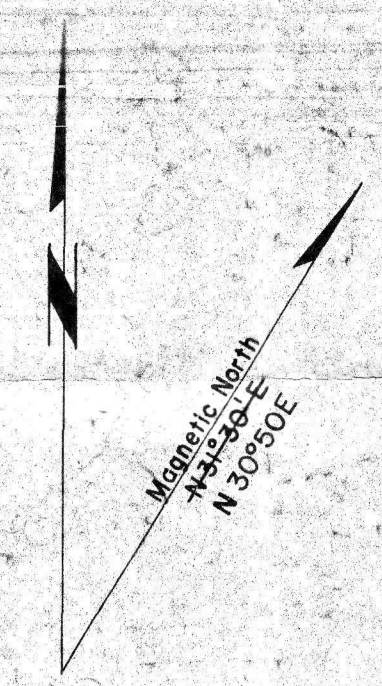
ROBINSON

CANADA  
DEPARTMENT OF NORTHERN AFFAIRS AND NATIONAL RESOURCES  
NORTHERN ADMINISTRATION BRANCH  
RESOURCES DIVISION

SCALE: 1/2 MILE TO 1 INCH

FT. 0 1000 2000 3000 4000 5000 6000 7000 8000 10000

ISSUED UNDER THE AUTHORITY OF THE MINISTER  
NORTHERN AFFAIRS AND NATIONAL RESOURCES



105-D-11	105-D-10	105-D-9
105-D-6	105-D-7	105-D-8
105-D-3	105-D-2	105-D-1

## NOTICE

THIS MAP IS ISSUED AS A PRELIMINARY GUIDE FOR WHICH THE DEPARTMENT OF INDIAN AFFAIRS AND NORTHERN DEVELOPMENT WILL ACCEPT NO RESPONSIBILITY FOR ANY ERRORS, INACCURACIES OR OMISSIONS WHATSOEVER.

26 MAY 81  
5 MAY 72  
27 OCT 65  
11 MAY 59

3 DEC 82  
4 OCT 80  
5 OCT 80  
6 OCT 80  
7 OCT 80  
8 OCT 80  
9 OCT 80  
10 OCT 80  
11 OCT 80  
12 OCT 80  
13 OCT 80  
14 OCT 80  
15 OCT 80  
16 OCT 80  
17 OCT 80  
18 OCT 80  
19 OCT 80  
20 OCT 80  
21 OCT 80  
22 OCT 80  
23 OCT 80  
24 OCT 80  
25 OCT 80  
26 OCT 80  
27 OCT 80  
28 OCT 80  
29 OCT 80  
30 OCT 80  
31 OCT 80  
1 JAN 81  
2 JAN 81  
3 JAN 81  
4 JAN 81  
5 JAN 81  
6 JAN 81  
7 JAN 81  
8 JAN 81  
9 JAN 81  
10 JAN 81  
11 JAN 81  
12 JAN 81  
13 JAN 81  
14 JAN 81  
15 JAN 81  
16 JAN 81  
17 JAN 81  
18 JAN 81  
19 JAN 81  
20 JAN 81  
21 JAN 81  
22 JAN 81  
23 JAN 81  
24 JAN 81  
25 JAN 81  
26 JAN 81  
27 JAN 81  
28 JAN 81  
29 JAN 81  
30 JAN 81  
31 JAN 81  
1 FEB 81  
2 FEB 81  
3 FEB 81  
4 FEB 81  
5 FEB 81  
6 FEB 81  
7 FEB 81  
8 FEB 81  
9 FEB 81  
10 FEB 81  
11 FEB 81  
12 FEB 81  
13 FEB 81  
14 FEB 81  
15 FEB 81  
16 FEB 81  
17 FEB 81  
18 FEB 81  
19 FEB 81  
20 FEB 81  
21 FEB 81  
22 FEB 81  
23 FEB 81  
24 FEB 81  
25 FEB 81  
26 FEB 81  
27 FEB 81  
28 FEB 81  
29 FEB 81  
30 FEB 81  
1 MAR 81  
2 MAR 81  
3 MAR 81  
4 MAR 81  
5 MAR 81  
6 MAR 81  
7 MAR 81  
8 MAR 81  
9 MAR 81  
10 MAR 81  
11 MAR 81  
12 MAR 81  
13 MAR 81  
14 MAR 81  
15 MAR 81  
16 MAR 81  
17 MAR 81  
18 MAR 81  
19 MAR 81  
20 MAR 81  
21 MAR 81  
22 MAR 81  
23 MAR 81  
24 MAR 81  
25 MAR 81  
26 MAR 81  
27 MAR 81  
28 MAR 81  
29 MAR 81  
30 MAR 81  
31 MAR 81  
1 APR 81  
2 APR 81  
3 APR 81  
4 APR 81  
5 APR 81  
6 APR 81  
7 APR 81  
8 APR 81  
9 APR 81  
10 APR 81  
11 APR 81  
12 APR 81  
13 APR 81  
14 APR 81  
15 APR 81  
16 APR 81  
17 APR 81  
18 APR 81  
19 APR 81  
20 APR 81  
21 APR 81  
22 APR 81  
23 APR 81  
24 APR 81  
25 APR 81  
26 APR 81  
27 APR 81  
28 APR 81  
29 APR 81  
30 APR 81  
1 MAY 81  
2 MAY 81  
3 MAY 81  
4 MAY 81  
5 MAY 81  
6 MAY 81  
7 MAY 81  
8 MAY 81  
9 MAY 81  
10 MAY 81  
11 MAY 81  
12 MAY 81  
13 MAY 81  
14 MAY 81  
15 MAY 81  
16 MAY 81  
17 MAY 81  
18 MAY 81  
19 MAY 81  
20 MAY 81  
21 MAY 81  
22 MAY 81  
23 MAY 81  
24 MAY 81  
25 MAY 81  
26 MAY 81  
27 MAY 81  
28 MAY 81  
29 MAY 81  
30 MAY 81  
31 MAY 81  
1 JUN 81  
2 JUN 81  
3 JUN 81  
4 JUN 81  
5 JUN 81  
6 JUN 81  
7 JUN 81  
8 JUN 81  
9 JUN 81  
10 JUN 81  
11 JUN 81  
12 JUN 81  
13 JUN 81  
14 JUN 81  
15 JUN 81  
16 JUN 81  
17 JUN 81  
18 JUN 81  
19 JUN 81  
20 JUN 81  
21 JUN 81  
22 JUN 81  
23 JUN 81  
24 JUN 81  
25 JUN 81  
26 JUN 81  
27 JUN 81  
28 JUN 81  
29 JUN 81  
30 JUN 81  
1 JUL 81  
2 JUL 81  
3 JUL 81  
4 JUL 81  
5 JUL 81  
6 JUL 81  
7 JUL 81  
8 JUL 81  
9 JUL 81  
10 JUL 81  
11 JUL 81  
12 JUL 81  
13 JUL 81  
14 JUL 81  
15 JUL 81  
16 JUL 81  
17 JUL 81  
18 JUL 81  
19 JUL 81  
20 JUL 81  
21 JUL 81  
22 JUL 81  
23 JUL 81  
24 JUL 81  
25 JUL 81  
26 JUL 81  
27 JUL 81  
28 JUL 81  
29 JUL 81  
30 JUL 81  
31 JUL 81  
1 AUG 81  
2 AUG 81  
3 AUG 81  
4 AUG 81  
5 AUG 81  
6 AUG 81  
7 AUG 81  
8 AUG 81  
9 AUG 81  
10 AUG 81  
11 AUG 81  
12 AUG 81  
13 AUG 81  
14 AUG 81  
15 AUG 81  
16 AUG 81  
17 AUG 81  
18 AUG 81  
19 AUG 81  
20 AUG 81  
21 AUG 81  
22 AUG 81  
23 AUG 81  
24 AUG 81  
25 AUG 81  
26 AUG 81  
27 AUG 81  
28 AUG 81  
29 AUG 81  
30 AUG 81  
31 AUG 81  
1 SEP 81  
2 SEP 81  
3 SEP 81  
4 SEP 81  
5 SEP 81  
6 SEP 81  
7 SEP 81  
8 SEP 81  
9 SEP 81  
10 SEP 81  
11 SEP 81  
12 SEP 81  
13 SEP 81  
14 SEP 81  
15 SEP 81  
16 SEP 81  
17 SEP 81  
18 SEP 81  
19 SEP 81  
20 SEP 81  
21 SEP 81  
22 SEP 81  
23 SEP 81  
24 SEP 81  
25 SEP 81  
26 SEP 81  
27 SEP 81  
28 SEP 81  
29 SEP 81  
30 SEP 81  
1 OCT 81  
2 OCT 81  
3 OCT 81  
4 OCT 81  
5 OCT 81  
6 OCT 81  
7 OCT 81  
8 OCT 81  
9 OCT 81  
10 OCT 81  
11 OCT 81  
12 OCT 81  
13 OCT 81  
14 OCT 81  
15 OCT 81  
16 OCT 81  
17 OCT 81  
18 OCT 81  
19 OCT 81  
20 OCT 81  
21 OCT 81  
22 OCT 81  
23 OCT 81  
24 OCT 81  
25 OCT 81  
26 OCT 81  
27 OCT 81  
28 OCT 81  
29 OCT 81  
30 OCT 81  
31 OCT 81  
1 NOV 81  
2 NOV 81  
3 NOV 81  
4 NOV 81  
5 NOV 81  
6 NOV 81  
7 NOV 81  
8 NOV 81  
9 NOV 81  
10 NOV 81  
11 NOV 81  
12 NOV 81  
13 NOV 81  
14 NOV 81  
15 NOV 81  
16 NOV 81  
17 NOV 81  
18 NOV 81  
19 NOV 81  
20 NOV 81  
21 NOV 81  
22 NOV 81  
23 NOV 81  
24 NOV 81  
25 NOV 81  
26 NOV 81  
27 NOV 81  
28 NOV 81  
29 NOV 81  
30 NOV 81  
1 DEC 81  
2 DEC 81  
3 DEC 81  
4 DEC 81  
5 DEC 81  
6 DEC 81  
7 DEC 81  
8 DEC 81  
9 DEC 81  
10 DEC 81  
11 DEC 81  
12 DEC 81  
13 DEC 81  
14 DEC 81  
15 DEC 81  
16 DEC 81  
17 DEC 81  
18 DEC 81  
19 DEC 81  
20 DEC 81  
21 DEC 81  
22 DEC 81  
23 DEC 81  
24 DEC 81  
25 DEC 81  
26 DEC 81  
27 DEC 81  
28 DEC 81  
29 DEC 81  
30 DEC 81  
31 DEC 81

Note: Entry on certain Lands is withdrawn from staking in cross-hatched areas to facilitate the settlement of Native Land Claims without prejudice to Existing Surface and Subsurface Rights.



