

Report
On
Phase #1
Nasima Series VMS Trend Project

By
Bernie Kreft

For
Y.M.I.P.
Focused Regional Module
2002-~~40~~ 008

Overview

Location – The project area is located in southern Yukon Territory, NE of Whitehorse and SW of Ross River, roughly equidistant between the two

Access – Access was by helicopter to all targets within the project area

History – The project area has seen limited hard-rock exploration work, mostly directed towards tungsten potential within skarns and gold exploration associated with the Livingstone Placer Camp

Geology – Geology consists of Nasina Series rocks, commonly graphitic schist/quartzite/siltstone and some similar aged ultramafic sills. The graphitic units occasionally contain discontinuous buff coloured quartz sericite schist horizons. The above units are intruded by Cretaceous to Jurassic/Triassic granitic plutons and batholiths.

Work Program – Work consisted of a one day program of silt sampling of three targets within the project area. Targets were centred on unexplained zinc anomalous RGS silt sample sites. Silt samples were taken at an approximate density of 1 per 2 square kilometres. No attempt was made to explore for bedrock mineralization. Silt samples were sieved to minus 80 mesh and analyzed for 30 elements by International Plasma.

Results – The program resulted in 52 silt samples.

Conclusions – Recce style silt sampling can be easily accomplished in the target area due to the nature of the topography and vegetation. Some minor difficulties were encountered trying to find landing spots below the 1100 metre elevation line.

Recommendations – Further work is recommended at, and in the vicinity of, sample sites BKGRBS-3/4 (Map B), CWGRBS-1/3 (Map B) and CWGRDS-1 (Map C). This work should consist of contour soil sampling and prospecting. No further work is recommended for Map D.

Budget	Charles Waugh (1 day x \$200/day)	=	\$200 00
	Bernie Kreft (1 day x \$375/day)	=	\$375 00
	Erwin Kreft (1 day x \$200/day)	=	\$200 00
	Food and camp supplies (3 man days x \$48/day)	=	\$144 00
	Helicopter (3 0 hrs)	=	\$3280 30
	Assaying (52 silts for ICP)	=	\$556 40
	Report Preparation (3 days x \$375/day)	=	\$1125 00
	Duplication	=	<u>\$50 00</u>
	TOTAL	=	\$5930 70

Map B

- Location – Located at UTM coordinates 557000E/680000N, along the south side of the headwaters of Mendocina Creek, on NTS mapsheet 105-F-5 in the Whitehorse Mining District
- Access – Access was by helicopter from Whitehorse, 90km one way. Several large (DC-3 capable) airstrips exist at the winter road serviced Livingstone Placer Camp located 20km to the west.
- History – No previous exploration work recorded in the area assessed.
- Geology – Geology consists of Nasina Series graphitic schist and graphitic quartzite with occasional discontinuous horizons of buff to tan quartz sericite schist. A granite batholith outcrops to the immediate south of the area assessed.
- Target – Two RGS silt sample sites with highly anomalous zinc, representing possible VMS type mineralization.
- Work Program – Work consisted of silt sampling (20) within the two drainage basins with anomalous zinc, and within the two drainage basins between the anomalous basins. Work conducted by Erwin Kreft, Bernie Kreft and Charles Waugh on July 10th.
- Results –
Highly anomalous zinc values to 818 ppm, cadmium to 6.2 ppm and vanadium to 185 ppm were returned from an area of creek underlain by graphitic schist and quartz sericite schist (samples BKGRBS-3/4). Similar type geology (based on stream bed rubble) appears to be present within drainage basin BKGRBS-5/6/7, the lower metal values in this creek are likely due to the presence of large amounts of foreign derived float.

Highly anomalous values of zinc 706 ppm, barium 609 ppm and vanadium 158 ppm, along with moderately anomalous values of 90 ppm copper, 53 ppm lead and 2.2 ppm cadmium were returned from sample site CWGRBS-1. The predominant lithology of the oversize silt sample reject from this site consists of graphitic schist. The silt sites downstream are also anomalous, although to a lesser extent, in the same elements.

Stream bed rubble at sample sites EKGRBS-1/2/3/4/5 is predominantly granitic in origin, no anomalous metal values were returned from these sites.
- Conclusions – Anomalous metal values, and geology, indicative of a VMS type deposit have been located within Map B in two areas.
- Recommendations – Tight spaced contour soil sampling (12.5m spacings) and prospecting should be conducted in the vicinity of BKGRBS-3/4. Contour soil sampling (25m spacings) and prospecting should be conducted at and upstream of silt sample

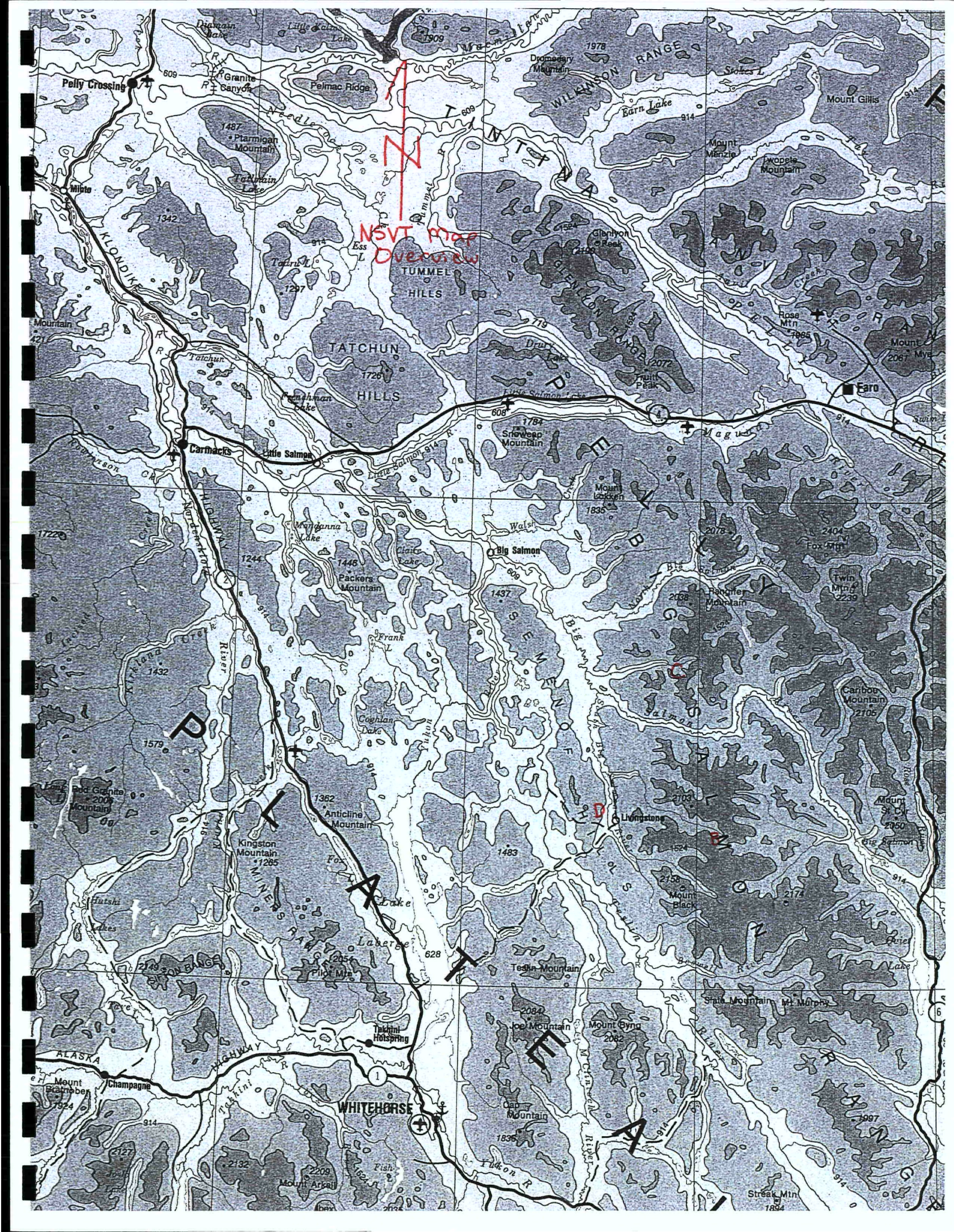
site CWGRBS-1 Some prospecting should also be conducted in the vicinity of CWGRBS-5/6/7/8 to check for the possible presence of favourable stratigraphy

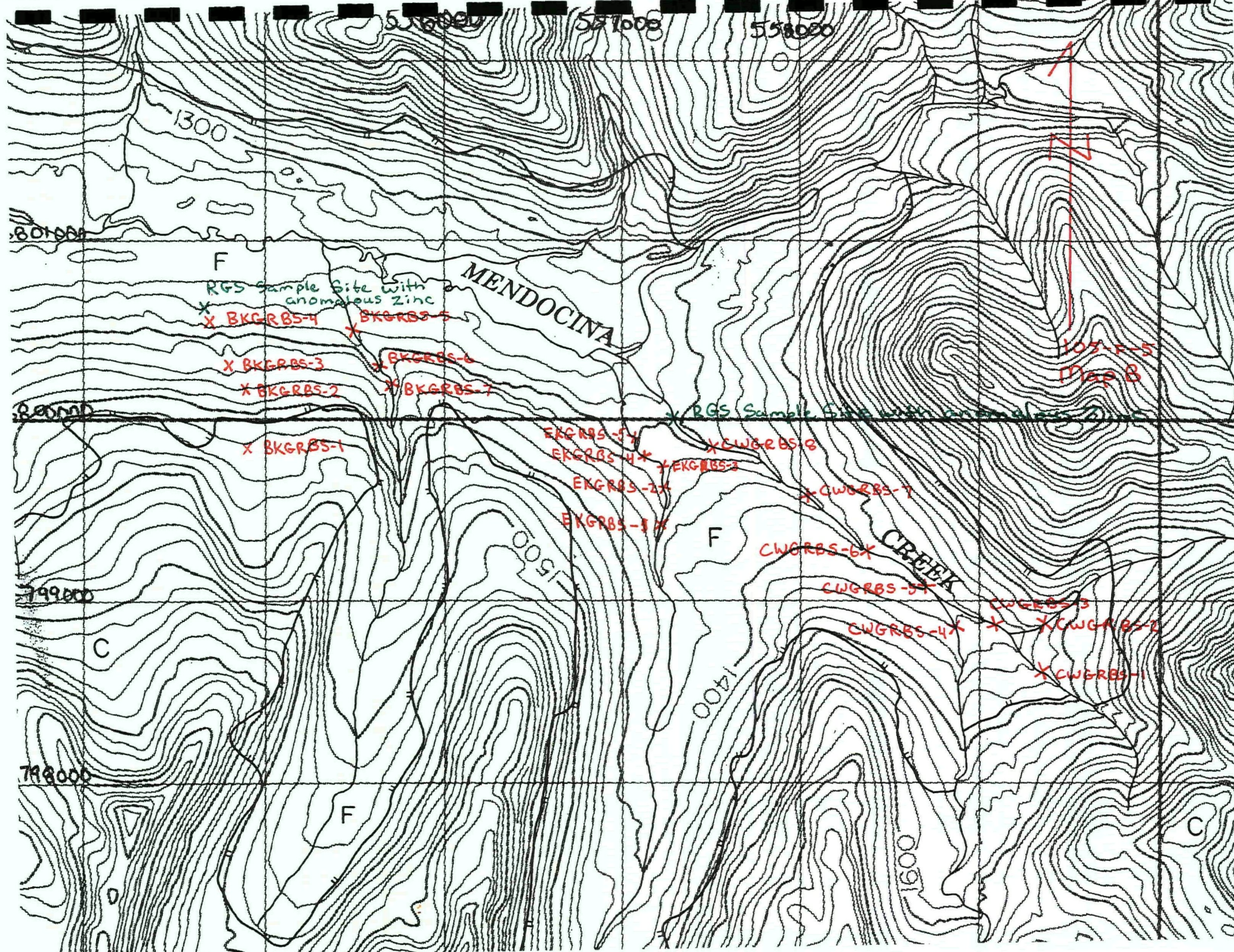
Map C

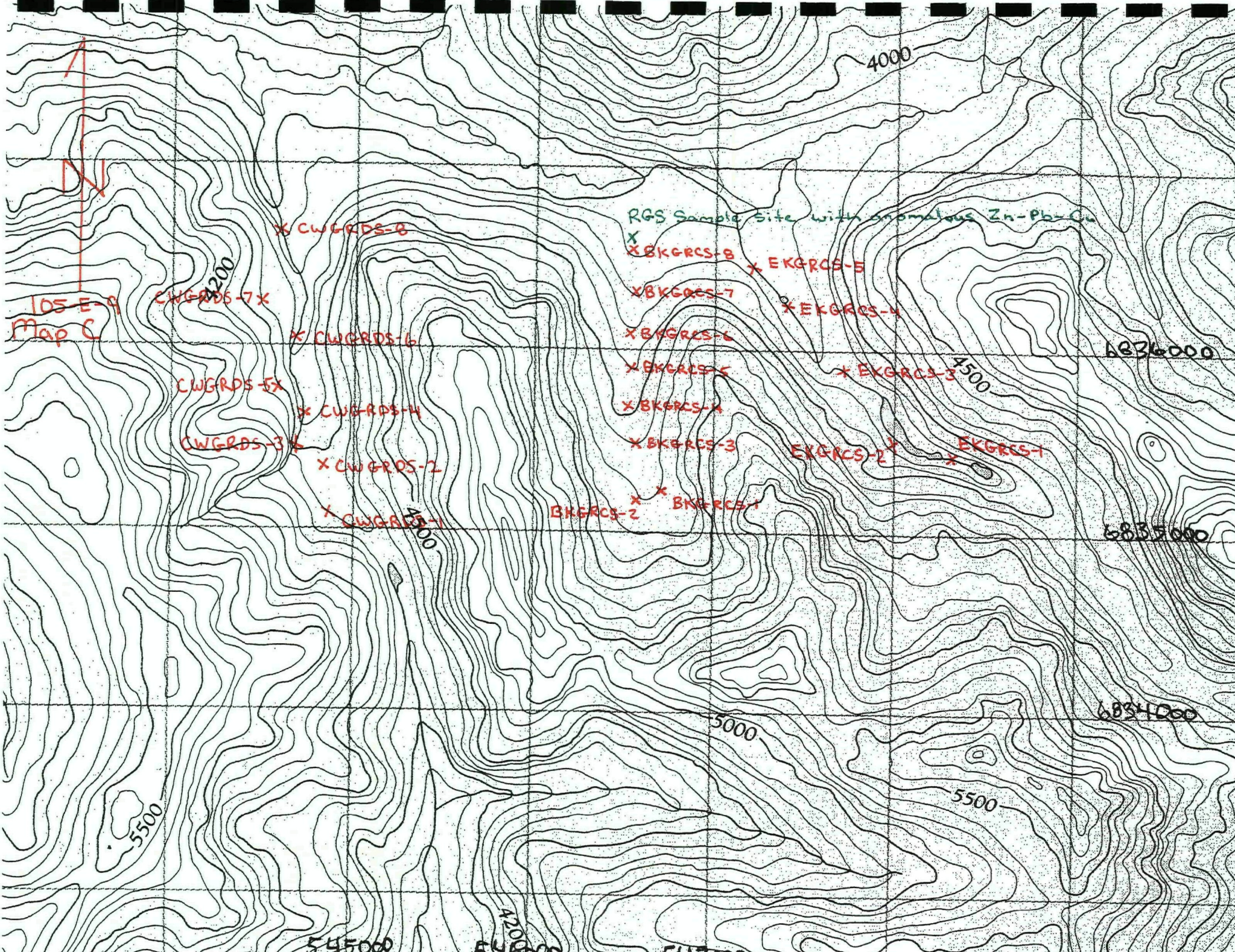
- Location – Located at UTM coordinates 546500E/6836600N, at the headwaters of Teraktu Creek, on NTS mapsheet 105-E-9 in the Whitehorse Mining District
- Access – Access was by helicopter from Whitehorse, 115km one way A winter road is located 15km to the west of the target area
- History – No previous exploration work recorded in the area assessed
- Geology – Geology consists of Nasina Series graphitic schist and graphitic quartzite with occasional discontinuous horizons of buff to tan quartz sericite schist An ultramafic unit cores a ridge on the west half of the target area between the BKGRCS series of samples and the CWGRDS series of samples
- Target – A RGS silt sample site with highly anomalous zinc-copper-lead, possible VMS type mineralization
- Work Program – Work consisted of silt sampling (21 samples) within the anomalous drainage basin, and the basins to the immediate east and west Work conducted by Erwin Kreft, Bernie Kreft and Charles Waugh on July 10th
- Results – Highly anomalous copper 396 ppm, lead 423 ppm, arsenic 443 ppm, antimony 34 ppm, tungsten 184 ppm and chromium 167 ppm were returned from sample site CWGRDS-1 No supporting anomalous metal values were returned from the two nearest sample sites Elemental signature and intensity suggests nearby in-situ mineralization with a possible intrusive hosted/related affinity
- The original Zn-Pb-Ba anomalous RGS sample site was located in the immediate vicinity of sample BKGRCS-8 No anomalous values were returned from this site, the RGS anomaly could not be duplicated
- Conclusions – Possible intrusive hosted a/o related mineralization is suggested by the anomalous metal signature within sample CWGRDS-1 The lack of anomaly support within nearby samples could indicate a small/restricted source area
- Recommendations – Detailed prospecting and rock sampling within the immediate vicinity of the anomalous sample site

Map D

- Location – Located at UTM coordinates 530750E/6811500N, immediately west of the South Big Salmon River, on NTS mapsheet 105-E-8 in the Whitehorse Mining District
- Access – Access was by helicopter from Whitehorse, 80km one way. Several large airstrips exist at the winter road serviced Livingstone Placer Camp located 4km to the east.
- History – Dupont Canada Ltd. Staked the Germ claims in the immediate area over a gold silt geochem anomaly after a regional sampling program in 1981.
- Geology – Geology consists of Upper Triassic to Lower Jurassic basic volcanics and similar aged sedimentary rocks.
- Target – A RGS silt sample site with highly anomalous copper (125 ppm), possible porphyry copper type mineralization.
- Work program – Work consisted of silt sampling of the anomalous drainage basin and the basins to the immediate north and south. Work conducted by Charles Waugh, Erwin Kreft and Bernie Kreft on July 10th.
- Results – Highest copper value returned was 95 ppm. Much of the area is covered by till or muck/overburden.
- Conclusions – The anomalous RGS value of 125 ppm was not duplicated. Spurious high copper values are often found in samples with a high organic (loss on ignition) content, this may be the reason for the original copper anomaly.
- Recommendations – No further work is recommended for the area of Map D.







4000

RGS Sample Site with anomalous Zn-Pb-Cu

X CWGRDS-8

X BKGRCS-8

X EKGRCS-8

CWGRDS-7X

X BKGRCS-7

X EKGRCS-7

105 E-9
Map C

X CWGRDS-6

X BKGRCS-6

X EKGRCS-6

CWGRDS-5X

X BKGRCS-5

X EKGRCS-5

6836000

CWGRDS-3X

X CWGRDS-4

X BKGRCS-4

4500

X CWGRDS-2

X BKGRCS-3

EKGRCS-2

EKGRCS-1

X CWGRDS-1

BKGRCS-2

BKGRCS-1

6835000

4000

6834000

5000

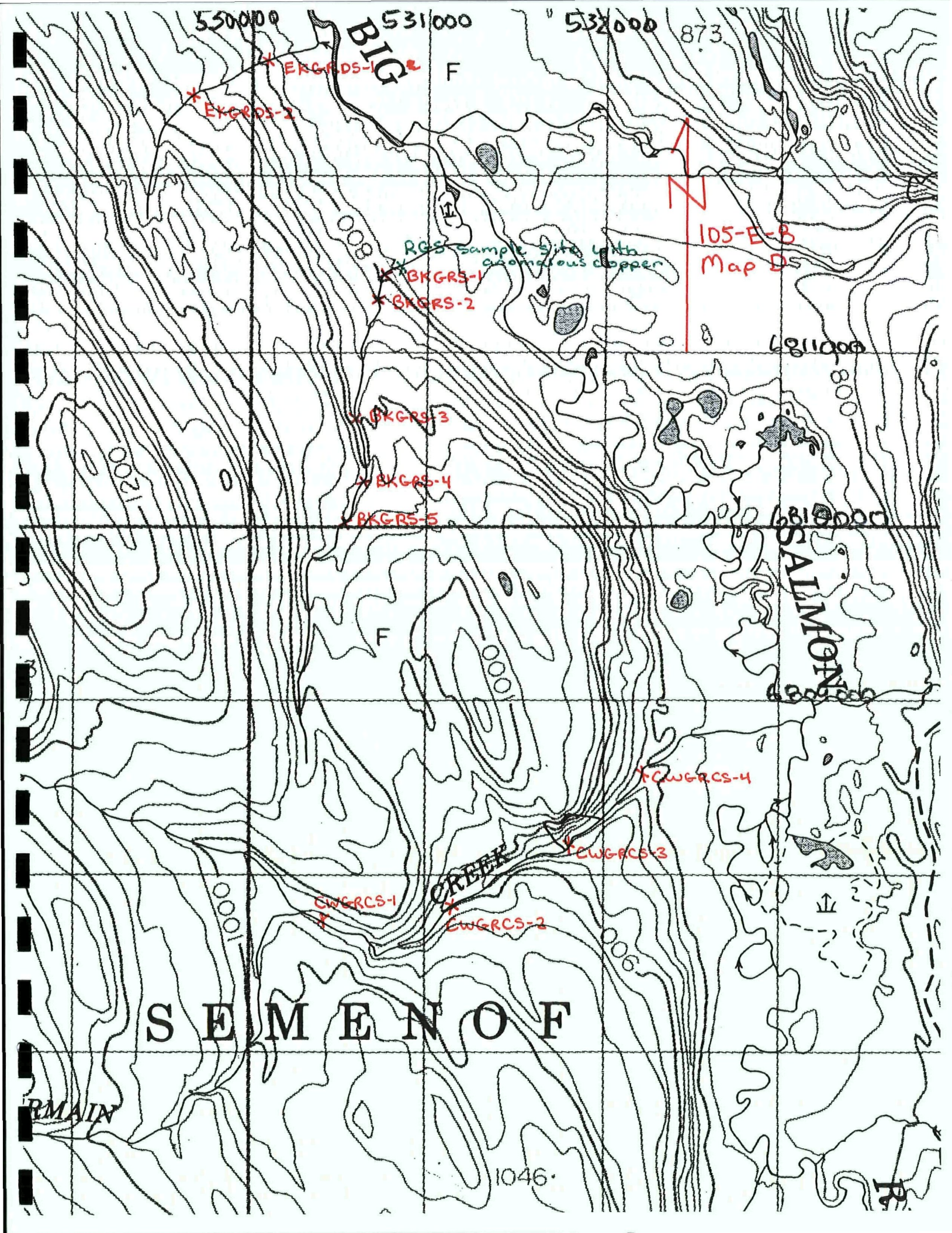
5500

5500

545000

540000

535000



Certificate# 02H0828

Client Northern Analytical Laboratories

Project W O 020019

No of Samples 79

Date In Aug 02, 2002

Date Out Aug 08, 2002

Sample No	SampleType	Ag ppm	Cu ppm	Pb ppm	Zn ppm	As ppm	Sb ppm	Hg ppm
BKGRBS-1	Pulp	<0.1	17	14	133	<5	<5	3
BKGRBS-2	Pulp	0.1	19	23	221	<5	<5	<3
BKGRBS-3	Pulp	0.1	25	36	637	<5	<5	<3
BKGRBS-4	Pulp	0.2	34	37	818	<5	<5	<3
BKGRBS-5	Pulp	0.1	35	18	290	<5	<5	<3
BKGRBS-6	Pulp	0.2	43	24	278	<5	<5	<3
BKGRBS-7	Pulp	0.1	43	22	249	<5	<5	<3
BKGRCS-1	Pulp	0.1	106	46	230	<5	<5	<3
BKGRCS-2	Pulp	<0.1	47	44	481	<5	<5	<3
BKGRCS-3	Pulp	<0.1	63	39	295	<5	<5	<3
BKGRCS-4	Pulp	<0.1	60	32	259	<5	<5	<3
BKGRCS-5	Pulp	<0.1	51	35	210	<5	<5	<3
BKGRCS-6	Pulp	<0.1	44	29	170	<5	<5	<3
BKGRCS-7	Pulp	<0.1	46	37	215	<5	<5	<3
BKGRCS-8	Pulp	<0.1	47	33	211	<5	<5	<3
BKGRS-1	Pulp	0.1	61	12	84	<5	<5	<3
BKGRS-2	Pulp	<0.1	50	16	80	<5	<5	<3
BKGRS-3	Pulp	0.1	95	10	75	<5	<5	<3
BKGRS-4	Pulp	<0.1	57	10	57	<5	<5	<3
BKGRS-5	Pulp	<0.1	32	15	48	<5	<5	<3
BKKKS-1	Pulp	<0.1	47	11	66	<5	<5	<3
BKMELS-1	Pulp	0.2	95	16	74	<5	<5	<3
BKMELS-2	Pulp	0.2	161	19	59	13	5	<3
BKMELS-3	Pulp	0.7	99	19	36	<5	<5	<3
BKMELS-4	Pulp	0.1	79	21	76	<5	<5	<3
BKMELS-5	Pulp	<0.1	60	11	22	<5	<5	<3
BKMELS-6	Pulp	<0.1	108	6	26	<5	<5	<3
BKMELS-7	Pulp	<0.1	89	8	22	<5	<5	<3
BKMELS-8	Pulp	0.1	72	8	29	<5	<5	<3
BKNEWS-1	Pulp	0.1	134	15	32	<5	<5	<3
BKNEWS-2	Pulp	0.1	136	18	34	<5	<5	<3
BKNEWS-3	Pulp	0.1	157	22	33	<5	<5	<3
BKOLS-1	Pulp	0.1	61	55	92	<5	5	<3
BKOLS-2	Pulp	0.1	74	42	85	<5	<5	<3
BKOLS-3	Pulp	0.6	145	98	281	62	<5	<3
BKOLS-4	Pulp	0.3	361	25	64	19	<5	<3
BKOLS-5	Pulp	<0.1	205	19	50	<5	<5	<3
BKOLS-6	Pulp	0.1	59	16	58	<5	<5	<3
CWA4S-1	Pulp	1	143	42	167	<5	<5	<3
CWA4S-2	Pulp	0.1	141	19	110	<5	<5	<3
CWGRBS-1	Pulp	0.3	90	53	706	<5	<5	<3

CWGRBS2Pulp	0 4	39	21	336	<5	<5	<3
CWGRBS3Pulp	0 3	64	41	637	<5	<5	<3
CWGRBS4Pulp	<0 1	61	27	197	<5	<5	<3
CWGRBS5Pulp	0 2	49	38	471	<5	<5	<3
CWGRBS6Pulp	0 2	47	33	496	<5	<5	<3
CWGRBS7Pulp	0 1	37	20	272	<5	<5	<3
CWGRBS8Pulp	0 3	39	34	389	<5	<5	<3
CWGRCSI Pulp	0 2	75	25	140	<5	<5	<3
CWGRCS2Pulp	0 4	74	20	140	<5	<5	<3
CWGRCS3Pulp	1 2	84	16	218	<5	<5	<3
CWGRCS4Pulp	0 2	87	30	218	<5	<5	<3
CWGRDS1 Pulp	1	396	423	180	443	34	<3
CWGRDS2Pulp	<0 1	46	18	87	<5	<5	<3
CWGRDS3Pulp	0 1	74	21	107	<5	<5	<3
CWGRDS4Pulp	0 2	75	26	151	<5	<5	<3
CWGRDS5Pulp	0 2	71	23	150	<5	<5	<3
CWGRDS6Pulp	0 2	82	31	166	<5	<5	<3
CWGRDS7Pulp	<0 1	62	14	94	<5	<5	<3
CWGRDS8Pulp	0 1	68	17	148	<5	<5	<3
CWKKS-1 Pulp	<0 1	93	14	76	<5	<5	<3
CWKKS-2 Pulp	<0 1	54	68	167	<5	<5	<3
CWPLS-1 Pulp	<0 1	12	8	40	<5	<5	<3
CWPLS-2 Pulp	<0 1	11	11	37	<5	<5	<3
EKA1S-1 Pulp	<0 1	28	10	44	<5	<5	<3
EKA1S-2 Pulp	<0 1	26	17	45	<5	<5	<3
EKA1S-3 Pulp	<0 1	50	13	57	<5	<5	<3
EKGRBS-1Pulp	<0 1	9	8	31	<5	<5	<3
EKGRBS-2Pulp	<0 1	10	17	40	<5	<5	<3
EKGRBS-3Pulp	<0 1	15	14	60	<5	<5	<3
EKGRBS-4Pulp	0 3	10	7	48	<5	<5	<3
EKGRBS-5Pulp	<0 1	14	17	65	<5	<5	<3
EKGRCS-1Pulp	0 3	52	18	285	<5	<5	<3
EKGRCS-2Pulp	0 1	89	24	210	<5	<5	<3
EKGRCS-3Pulp	<0 1	80	22	185	<5	<5	<3
EKGRCS-4Pulp	0 1	66	28	173	<5	<5	<3
EKGRCS-5Pulp	0 1	67	32	194	<5	<5	<3
EKGRDS-1Pulp	<0 1	44	17	60	<5	<5	<3
EKGRDS-2Pulp	<0 1	22	6	48	<5	<5	<3
Minimum detection	0 1	1	2	1	5	5	3
Maximum detection	100	20000	20000	20000	10000	1000	10000
Method	ICP	ICP	ICP	ICP	ICP	ICP	ICP

Mo ppm	Tl ppm	Bi ppm	Cd ppm	Co ppm	Ni ppm	Ba ppm	W ppm	Cr ppm
6	<10	<2	<0.1	10	21	203	11	13
5	<10	<2	1.3	11	21	169	12	16
7	<10	<2	3.8	12	41	175	8	20
7	<10	<2	6.2	14	60	170	12	25
5	<10	<2	0.3	16	39	197	14	23
8	<10	<2	<0.1	16	41	210	8	24
9	<10	<2	<0.1	12	39	209	16	32
4	<10	<2	<0.1	20	38	146	11	44
3	<10	<2	<0.1	19	166	210	10	78
5	<10	<2	<0.1	20	135	191	13	83
6	<10	<2	<0.1	21	98	264	13	70
4	<10	<2	<0.1	20	74	198	11	55
6	<10	<2	<0.1	19	64	249	10	75
4	<10	<2	<0.1	18	63	323	16	49
3	<10	3	<0.1	18	60	276	10	55
4	<10	<2	<0.1	21	40	354	15	27
5	<10	<2	<0.1	21	30	297	12	28
5	<10	<2	<0.1	16	30	356	14	30
3	<10	<2	<0.1	16	20	268	14	24
3	<10	<2	<0.1	15	16	307	12	29
3	<10	<2	<0.1	11	9	119	12	18
7	<10	<2	<0.1	46	45	68	15	11
6	<10	<2	<0.1	48	52	78	10	11
5	<10	<2	<0.1	43	53	88	17	14
4	<10	<2	<0.1	28	29	57	13	13
3	<10	<2	<0.1	18	15	46	14	9
4	<10	<2	<0.1	25	17	49	16	4
3	<10	<2	<0.1	19	17	35	13	4
4	<10	<2	<0.1	18	22	42	15	9
4	<10	<2	<0.1	25	28	145	16	13
4	<10	<2	<0.1	27	29	174	10	13
5	<10	<2	<0.1	26	22	161	15	12
8	<10	<2	<0.1	23	25	64	13	14
7	<10	<2	<0.1	22	29	40	13	17
11	<10	4	<0.1	30	52	62	10	10
7	<10	<2	<0.1	57	62	74	14	11
5	<10	4	<0.1	34	43	99	20	25
4	<10	<2	<0.1	24	23	59	8	8
11	<10	<2	<0.1	37	24	56	12	30
13	<10	<2	<0.1	49	31	86	13	42
9	<10	<2	2.2	24	69	609	24	34

V ppm	Mn ppm	La ppm	Sr ppm	Zr ppm	Sc ppm	Ti %	Al %	Ca %
46	913	20	25	1	2	0.06	1.02	0.63
53	573	30	30	1	2	0.07	1.21	0.81
128	444	21	41	1	3	0.07	1.49	0.88
185	472	25	38	1	4	0.07	1.72	1.08
97	553	32	46	1	4	0.09	1.75	0.89
114	559	32	46	2	4	0.09	1.86	1.05
106	379	21	42	<1	3	0.06	1.61	1.7
48	475	11	37	1	3	0.06	1.2	1.72
29	423	25	25	2	1	0.02	1.13	0.84
35	1008	18	41	1	2	0.03	1.03	2.22
44	2265	12	45	2	2	0.04	0.92	2.09
40	1486	14	36	2	2	0.04	1	1.56
41	2143	13	34	1	2	0.04	0.88	1.31
32	1660	13	39	1	2	0.03	0.93	1.68
35	1177	15	39	1	2	0.04	0.9	2.06
59	3678	13	126	3	5	0.06	1.04	2.03
72	2185	13	97	4	5	0.07	1.11	1.7
62	1161	11	110	3	5	0.05	1.07	1.66
66	1059	11	85	4	5	0.08	1.17	1.28
83	1999	14	94	4	5	0.09	1.14	1.27
58	506	8	66	2	5	0.04	1.42	1.33
21	4177	18	14	5	5	0.01	0.71	0.56
19	3888	19	12	3	5	0.01	0.62	0.4
15	2167	12	12	4	2	<0.01	0.46	0.18
15	1470	28	5	2	2	0.01	0.85	0.08
15	1001	29	3	1	2	0.01	0.88	0.07
42	1244	18	2	3	2	<0.01	0.42	0.04
24	1006	18	1	4	1	<0.01	0.38	0.03
14	1091	21	3	2	2	0.01	0.68	0.05
28	1459	20	3	4	3	0.01	1.11	0.14
25	1577	21	4	4	3	0.01	1.06	0.15
23	1559	20	4	6	3	<0.01	0.96	0.21
24	2682	17	18	3	4	0.02	1.02	6.95
27	1956	12	20	3	4	0.02	1.08	9.95
26	2811	18	20	2	4	0.01	0.63	5.76
20	3846	16	11	3	5	0.01	0.7	0.33
34	2032	19	11	2	4	0.02	1.14	0.22
13	2105	19	8	2	2	0.01	0.56	0.2
147	963	5	64	6	11	0.12	3.28	2.55
208	1263	6	91	10	17	0.28	3.99	3.93
158	600	24	75	2	5	0.09	2.48	1.44

Fe %	Mg %	K %	Na %	P %
1 6	0 51	0 13	0 06	0 14
1 68	0 63	0 19	0 06	0 14
1 96	1 11	0 24	0 06	0 18
2 39	1 42	0 27	0 07	0 17
2 38	1 1	0 38	0 07	0 15
2 61	1 21	0 41	0 07	0 16
2 01	1 39	0 42	0 08	0 15
2 75	1 48	0 07	0 05	0 08
2 97	1 18	0 05	0 06	0 08
2 97	1 61	0 06	0 05	0 08
4 17	1 44	0 04	0 05	0 09
3 08	1 29	0 05	0 05	0 07
3 36	1 11	0 04	0 05	0 08
2 86	1 13	0 05	0 05	0 08
2 78	1 09	0 05	0 05	0 08
2 93	0 8	0 08	0 06	0 09
3 23	0 88	0 07	0 05	0 09
2 85	0 78	0 07	0 06	0 09
2 65	0 91	0 06	0 06	0 09
2 85	0 79	0 06	0 06	0 09
2 76	0 52	0 1	0 07	0 08
5 89	0 61	0 09	0 05	0 05
5 2	0 43	0 09	0 05	0 05
4 81	0 37	0 06	0 05	0 04
4 16	0 35	0 09	0 05	0 03
2 7	0 4	0 09	0 05	0 02
4 88	0 18	0 05	0 05	0 02
4	0 16	0 04	0 05	0 02
3 99	0 33	0 05	0 04	0 02
4 03	0 8	0 07	0 05	0 03
4 05	0 74	0 06	0 04	0 03
4 33	0 68	0 06	0 04	0 03
3 22	4 75	0 15	0 05	0 06
3 36	5 07	0 2	0 05	0 04
4 61	3 29	0 13	0 05	0 08
5 7	0 46	0 09	0 05	0 04
4 94	0 56	0 1	0 05	0 05
4 06	0 34	0 06	0 05	0 04
6 33	1 35	0 07	0 08	0 07
7 03	1 69	0 05	0 08	0 07
3 73	1 72	0 67	0 08	0 24

1 79	1 71	0 25	0 05	0 13
3 24	1 53	0 46	0 07	0 18
3 06	1 64	0 62	0 08	0 21
2 84	1 83	0 51	0 08	0 22
2 75	1 55	0 47	0 08	0 2
2 32	0 91	0 33	0 08	0 19
2 28	1 79	0 51	0 07	0 16
3 92	1 78	0 54	0 09	0 12
3 88	1 68	0 47	0 08	0 13
2 43	0 58	0 11	0 05	0 22
4 45	2	0 68	0 1	0 12
3 81	2 36	0 2	0 13	0 07
4 55	1 87	0 08	0 06	0 09
3 71	1 06	0 09	0 06	0 06
4 1	1 8	0 46	0 09	0 12
4 01	2 18	0 56	0 09	0 09
4 34	2 22	0 49	0 08	0 11
4 34	1 53	0 41	0 08	0 17
4 01	1 67	0 4	0 08	0 16
5 89	1 35	0 08	0 1	0 09
3 64	1 64	0 19	0 11	0 09
1 81	0 3	0 08	0 07	0 08
1 94	0 28	0 06	0 07	0 08
2 55	0 68	0 07	0 07	0 08
2 11	0 67	0 06	0 07	0 08
3 08	1 02	0 06	0 07	0 08
1 14	0 32	0 18	0 06	0 23
1 32	0 43	0 23	0 06	0 12
1 68	0 52	0 29	0 06	0 15
1 29	0 41	0 22	0 06	0 16
1 5	0 48	0 28	0 06	0 63
2 8	1 66	0 1	0 05	0 12
3 02	2 24	0 14	0 05	0 09
2 72	2 02	0 13	0 05	0 08
3 12	1 99	0 1	0 05	0 09
3 16	1 98	0 11	0 05	0 08
2 85	1	0 07	0 06	0 08
2 53	1 15	0 04	0 05	0 06
0 01	0 01	0 01	0 01	0 01
10	10	10	5	5
ICP	ICP	ICP	ICP	ICP