

PATTON CREEK PLACER PROPERTY

DAWSON MINING DISTRICT, YUKON TERRITORY

Final Report on YMEP15-042

Yukon Mineral Exploration Program (YMEP)

Target Evaluation Module

by

William LeBarge

Geoplacer Exploration Ltd.

Location of property: 63°18'36"N to 63°19'26"N and 138°58'46"W to 139°4'22"W
NTS map sheets: 115O/06 and 115O/07
Mining District: Dawson
Date: January 28, 2016

Table of Contents

Executive Summary	1
Introduction	2
Location and Access	2
Placer Tenure	4
Permitting	10
Quartz Tenure	10
History of Exploration and Mining – Maisy May Creek.....	10
Exploration History – Patton Creek and Adjacent Maisy May Creek.....	13
Regional Bedrock Geology	13
Regional Geophysics and Major Structures	13
Local Bedrock Geology	16
Quaternary History	16
Property Surficial Geology	16
2014 Exploration Program	20
Rationale for 2015 Exploration Program.....	21
2015 Placer Exploration Program	24
Excavation of test pits	24
Lithological Characteristics of Gravel.....	25
Sample Processing	29
Gold and Heavy Mineral Results	31
Conclusions and Recommendations	34
Statement of Qualifications – William LeBarge, Geoplacer Exploration Ltd.	36
References	37

List of Figures

Figure 1 - General Location of Patton Creek Project, Yukon.	3
Figure 2 – Location of Patton Creek Placer Project and South Dawson region placer tenures.	7
Figure 3 - Proposed new road to the Coffee Creek mine owned by Kaminak Gold Corporation from News Release, December 2015. Route is currently through Maisy May Creek and runs past the mouth of Patton Creek.	8
Figure 4 - Patton Creek placer claims, local access roads, major faults and adjacent placer claims.	9
Figure 5 – Patton Creek, Candace Creek and Maisy May Creek - Location of adjacent properties and historical mining activity. A view of this areas is shown on Plate 2.	12
Figure 6 - – Enhanced Residual Total Magnetic Field, Maisy May Creek area, modified from Hayward et. al. (2012). Fault traces overlain from MacKenzie and Craw (2012) and YGS (2016).	14
Figure 7 –First Vertical Derivative of the Enhanced Magnetic Field, Patton Creek, modified from Hayward et. al. (2012). Fault traces overlain from MacKenzie and Craw (2012) and YGS (2016).	15
Figure 8 - Bedrock Geology: Maisy May and Patton Creeks, after Gordey and Ryan (2005); MacKenzie and Craw (2012) and Yukon Geological Survey (2016). Bedrock unit legend detailed in text.	18
Figure 9 - Surficial Geology, Patton Creek, after Jackson (2005a, 2005b). Fault traces overlain from MacKenzie and Craw (2012) and Yukon Geological Survey (2016). Surficial unit legend also in text.	19
Figure 10 - Gold particle interception in placer deposits by sample size. After Fig. 4.2, McCulloch et. al., 2003.	22
Figure 11 - Sensitivity of drill hole size, showing the amount that a 1 mg gold particle would add to the value estimate (after Clarkson, 1993). Diagram illustrates that drill holes 8 inches in diameter and over are preferable, even for deposits with gold grains of 1 mg and smaller.	22
Figure 12 - Location of 2014 resistivity lines, 2014 auger drill holes, and 2013, 2014 and 2015 test pits on Patton Creek.	23
Figure 13 - Drill holes PC A 14 BH-01 to PC A 14 BH-07 and the two Mila test pit outlines plotted on Kryotek Line PC A (Coates, 2014a). View looking downstream on Mila Creek. This line is shown in Figure 12.	27
Figure 14 - Drill holes PC C 14 BH-01 to PC C 14-02, and test pit Patton 2015-01 plotted on Kryotek Line PC C (2014). View looking downstream on Patton Creek. Line is shown on Figure 12.	27

List of Tables

Table 1 - Claim Status, Patton Creek Property.....	5
Table 2 - Geographic Coordinates of 2015 Test Pits, Patton Creek.....	26
Table 3 - Gold and Heavy Mineral Results, Patton Creek 2015 Exploration Program.	30
Table 4 - 2015 Placer Exploration Statement of Costs, Patton Creek.....	35

List of Plates

Plate 1- View looking west (upstream) on Patton Creek at the confluence with Maisy May Creek, September 20, 2015. Maisy May Creek flows right to left in the photo.....	4
Plate 2 - View looking north of the lower reaches of Patton Creek at its confluence with Maisy May Creek. Location of 2015 test pits are shown. Photo taken September 20, 2015.	11
Plate 3 - View looking downstream (southeast) of Patton Creek at its confluence with Maisy May Creek, June 2013. The approximate trace of the fault which transects Maisy May from Candace Creek to Patton Creek can be discerned as running from the linear drainages in the distance to the location of the observer.	17
Plate 4 - Similar view to Plate 3 aerial photo rendered in Google Earth, with fault traces of Mackenzie and Craw (2012) overlain.....	17
Plate 5 - Test pit Mila 2015-01 on Mila Creek on the left limit of Patton Creek. The location is shown on Figure 12.	24
Plate 6 - Test pit Patton 2015-01 on Patton Creek. Location is shown on Figure 12.	25
Plate 7 - A typical assortment of gravel clasts from Patton Creek included rounded to subrounded marble; angular schist and orthogneiss; occasional vein quartz; and rare subangular to angular serpentinite. Some marble clasts exhibited homolithic "auto" breccia textures with hematite-staining.	26
Plate 8 - View of Patton and Mila Creeks showing the 2015 test pits and access road from Maisy May Creek. Photo taken September 20, 2015.	28
Plate 9 – The test trommel was mounted on an ATV-portable frame and had a ½ inch screen. Powered by an electrical motor with water supplied by a 1.5 inch pump, sluiced material was fed to a 6 foot aluminum sluice run with expanded metal riffles over unbacked Nomad matting, followed by 4 feet of a "Le Trap" sluice run. Gravel was fed directly to the hopper by the excavator.	29
Plate 10 - Sample PATT15-1 was a single pan at the top of the gravel layer in pit PATTON 2015-01. A hackly coarse gold grain and several small colours were recovered along with abundant crystalline magnetite and garnet.	31
Plate 11 - Sample PATT15-3 from test pit PATTON 2015-01 contained coarse to medium sized hackly gold grains as well as magnetite and rutile.	32
Plate 12 - Gold recovered from Mila Creek pit MILA 2015-01 (Sample M15-1) was a mixture of angular to hackly coarse grains and fine to very fine colours. Heavy minerals included abundant pyrite.....	33

Executive Summary

The following is the final report on Patton Creek as required for YMEP15-042, a grant under the Yukon Mineral Exploration Program, Target Evaluation Module. Patton Creek is an officially un-named right-limit tributary of Maisy May Creek. Access to the property is via secondary gravel roads with the total road distance from Dawson City to the Patton Creek placer claims approximately 140 kilometres. In addition, a bush airstrip lies 1.4 km northeast of the claims. The property consists of Placer Claims P515224 (Mila) and P515225 (Irina) and the Alex 1-31 placer claims (P516012-P516042).

Government royalty records show that Maisy May Creek produced at least 25,926 crude ounces of gold between 1980 and 2010, the majority of which (19,202 crude ounces) was mined by Queenstake Resources in the period 1984 to 1989. This production is coincident with the location of a thrust fault which trends NNW/SSE along Maisy May Creek, a fact which points towards a component of structural control to the gold mineralization in the drainage. A splay from this thrust fault crosses Maisy May Creek in a NW direction, transecting the lower reaches of Patton Creek. This fault trace is coincident with a linear magnetic high, and overlaps with both the high-grade hand-mined left limit bench on Patton Creek and the high-grade zone in Maisy May Creek mined by Queenstake Resources Ltd. Therefore, due to the spatial association between linear magnetic anomalies, bedrock faults, bedrock gold mineralization and historic placer mining activity, there is a strong possibility of significant bedrock and associated placer gold values in Patton Creek and its tributaries.

The 2015 exploration program was successful in revealing the characteristics of the stratigraphic sections in both Patton Creek and Mila Creek. Gravel and muck thicknesses encountered were consistent with interpretations from previous exploration programs.

The Patton Creek test pit intersected thawed, easily-mined sandy cobble-pebble gravel. Unworn, hackly gold grains were encountered from top to bottom in the gravel section. Although placer gold was recovered in every sample, values were inconsistent – nearly as many gold grains were recovered in one pan sample from the top of the gravels, as were later recovered larger, deeper samples.

On Mila Creek, the angular, unworn placer gold encountered was a mixture of coarser and fine to very fine colours - characteristics which support the hypothesis that the regional structure transecting Mila Creek may be a mineralized feature coincident with a bedrock gold source.

The ATV portable trommel, while an improvement over previous testing programs, proved inadequate for the 2015 testing program on Patton Creek. This resulted in a less than optimal amount of gravel tested during the 2015 program.

It is recommended that much larger bulk tests be conducted in the vicinity of both 2015 test pits on Patton Creek and Mila Creek. The previous test pits should be re-excavated and expanded in size to allow greater depth penetration, with the aim of exposing a significant area on bedrock. A wash plant with a minimum capacity of 25 cubic yards an hour should be used to process gravel samples, including the approximately 20 cubic yards of material which is stockpiled adjacent to pit PATTON 2015-01.

Introduction

The following is the final report on Patton Creek as required for YMEP15-042, a grant under the Yukon Mineral Exploration Program, Target Evaluation Module. This project was previously funded under grant number YMEP14-047, under the Target Evaluation Module of the Yukon Mineral Exploration Program, for Geoplacer Exploration Ltd.

Location and Access

Maisy May Creek is a right limit tributary of the lower Stewart River, located in central Yukon approximately 100 km by air south of Dawson City, Yukon (Figure 1).

The Patton Creek Property is located on an un-named right-limit tributary of Maisy May Creek, which is locally known as Patton Creek. The placer claims of the Patton Creek Property are all adjoining.

The extent of the current property is 63°18'36"N to 63°19'26"N and 138°58'46"W to 139°4'22"W; on NTS map sheets 1150/06 and 1150/07, in the Dawson Mining District (Figure 2, Figure 3; Plate 1).

Access to the property can be gained by fixed-wing air or summer road. Surface access is via secondary gravel roads - the usual route runs along Hunker Creek to King Solomon Dome, down Sulfur Creek to Indian River, up Eureka Creek to Eureka Dome, down Black Hills Creek to the Henderson road turnoff towards Henderson Dome. At Henderson Dome a south-fork turn leads down Maisy May Creek road towards the property. The total road distance from Dawson City to the Patton Creek placer claims is approximately 140 kilometres. A 600 metre-long "bush" airstrip is located in the valley of Maisy May Creek a distance of 1.4 km from the Patton Creek property. The geographic coordinates of the airstrip are 63°20'05"N and 138°59'02"W.

An improved road is proposed as part of the Kaminak Coffee mine. This road is currently routed through Maisy May Creek and will pass by the mouth of Patton Creek. This is shown on Figure 3.

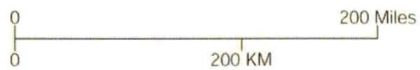


Figure 1 - General Location of Patton Creek Project, Yukon.

Placer Tenure

The Patton Creek placer claims are shown on Figure 3. Three-mile prospecting lease ID01112 was staked by William LeBarge for Geoplacer Exploration Ltd. on June 12, 2013. After completion of assessment work (Coates, 2014a) the prospecting lease was staked to claims on May 31, 2014. The Alex 1-31 claims were recorded on June 3, 2014. Co-discovery claims P515224 (Mila) and P515225 (Irina) were staked by William LeBarge and Bud Davis for Geoplacer Exploration Ltd. on June 12, 2013. After completion of assessment work for the 2014 season (Coates, 2014a, 2014b; LeBarge, 2014), all placer claims on the Patton Property are in good standing until 2016, with most having excess credit for at least 4 years. Table 1 shows a summary of the current claim status for Patton Creek property.



Plate 1- View looking west (upstream) on Patton Creek at the confluence with Maisy May Creek, September 20, 2015. Maisy May Creek flows right to left in the photo.

Table 1 - Claim Status, Patton Creek Property

Grant Number	Claim Name	Claim Owner	Recording Date	Staking Date	Claim Expiry Date	Status	Lease	Total Excess Credit	NTS Map Number
P 515224	Mila	Geoplacer Exploration Ltd - 100%	13/06/2013	12/06/2013	12/12/2016	Active	-	5	1150/07
P 515225	Irina	Geoplacer Exploration Ltd - 100%	13/06/2013	12/06/2013	12/12/2016	Active	-	4	1150/07
P 516012	Alex 1	Geoplacer Exploration Ltd - 100%	03/06/2014	31/05/2014	03/12/2016	Active	ID01112	7	1150/07
P 516013	Alex 2	Geoplacer Exploration Ltd - 100%	03/06/2014	31/05/2014	03/12/2016	Active	ID01112	7	1150/07
P 516014	Alex 3	Geoplacer Exploration Ltd - 100%	03/06/2014	31/05/2014	03/12/2016	Active	ID01112	7	1150/07
P 516015	Alex 4	Geoplacer Exploration Ltd - 100%	03/06/2014	31/05/2014	03/12/2016	Active	ID01112	7	1150/07
P 516016	Alex 5	Geoplacer Exploration Ltd - 100%	03/06/2014	31/05/2014	03/12/2016	Active	ID01112	7	1150/07
P 516017	Alex 6	Geoplacer Exploration Ltd - 100%	03/06/2014	31/05/2014	03/12/2016	Active	ID01112	7	1150/07
P 516018	Alex 7	Geoplacer Exploration Ltd - 100%	03/06/2014	31/05/2014	03/12/2016	Active	ID01112	7	1150/06, 1150/07
P 516019	Alex 8	Geoplacer Exploration Ltd - 100%	03/06/2014	31/05/2014	03/12/2016	Active	ID01112	7	1150/06, 1150/07
P 516020	Alex 9	Geoplacer Exploration Ltd - 100%	03/06/2014	31/05/2014	03/12/2016	Active	ID01112	7	1150/06
P 516021	Alex 10	Geoplacer Exploration Ltd - 100%	03/06/2014	31/05/2014	03/12/2016	Active	ID01112	7	1150/06
P 516022	Alex 11	Geoplacer Exploration Ltd - 100%	03/06/2014	01/06/2014	03/12/2016	Active	ID01112	7	1150/06
P 516023	Alex 12	Geoplacer Exploration Ltd - 100%	03/06/2014	01/06/2014	03/12/2016	Active	ID01112	7	1150/06
P 516024	Alex 13	Geoplacer Exploration Ltd - 100%	03/06/2014	01/06/2014	03/12/2016	Active	ID01112	7	1150/06
P 516025	Alex 14	Geoplacer Exploration Ltd - 100%	03/06/2014	01/06/2014	03/12/2016	Active	ID01112	7	1150/06
P 516026	Alex 15	Geoplacer Exploration Ltd - 100%	03/06/2014	02/06/2014	03/12/2016	Active	ID01112	7	1150/06
P 516027	Alex 16	Geoplacer Exploration Ltd - 100%	03/06/2014	02/06/2014	03/12/2016	Active	ID01112	7	1150/06
P 516028	Alex 17	Geoplacer Exploration Ltd - 100%	03/06/2014	02/06/2014	03/12/2016	Active	ID01112	7	1150/06
P 516029	Alex 18	Geoplacer Exploration Ltd - 100%	03/06/2014	02/06/2014	03/12/2016	Active	ID01112	7	1150/06
P 516030	Alex 19	Geoplacer Exploration Ltd - 100%	03/06/2014	02/06/2014	03/12/2016	Active	ID01112	7	1150/06
P 516031	Alex 20	Geoplacer Exploration Ltd - 100%	03/06/2014	02/06/2014	03/12/2016	Active	ID01112	7	1150/06
P 516032	Alex 21	Geoplacer Exploration Ltd - 100%	03/06/2014	02/06/2014	03/12/2016	Active	ID01112	7	1150/06
P 516033	Alex 22	Geoplacer Exploration Ltd - 100%	03/06/2014	02/06/2014	03/12/2016	Active	ID01112	7	1150/06
P 516034	Alex 23	Geoplacer Exploration Ltd - 100%	03/06/2014	02/06/2014	03/12/2016	Active	ID01112	7	1150/06
P 516035	Alex 24	Geoplacer Exploration Ltd - 100%	03/06/2014	02/06/2014	03/12/2016	Active	ID01112	7	1150/06
P 516036	Alex 25	Geoplacer Exploration Ltd - 100%	03/06/2014	02/06/2014	03/12/2016	Active	ID01112	7	1150/06

Grant Number	Claim Name	Claim Owner	Recording Date	Staking Date	Claim Expiry Date	Status	Lease	Total Excess Credit	NTS Map Number
P 516037	Alex 26	Geoplacer Exploration Ltd - 100%	03/06/2014	02/06/2014	03/12/2016	Active	ID01112	7	1150/06
P 516038	Alex 27	Geoplacer Exploration Ltd - 100%	03/06/2014	02/06/2014	03/12/2016	Active	ID01112	7	1150/06
P 516039	Alex 28	Geoplacer Exploration Ltd - 100%	03/06/2014	02/06/2014	03/12/2016	Active	ID01112	7	1150/06
P 516040	Alex 29	Geoplacer Exploration Ltd - 100%	03/06/2014	02/06/2014	03/12/2016	Active	ID01112	7	1150/06
P 516041	Alex 30	Geoplacer Exploration Ltd - 100%	03/06/2014	02/06/2014	03/12/2016	Active	ID01112	6	1150/06
P 516042	Alex 31	Geoplacer Exploration Ltd - 100%	03/06/2014	02/06/2014	03/12/2016	Active	ID01112	6	1150/06

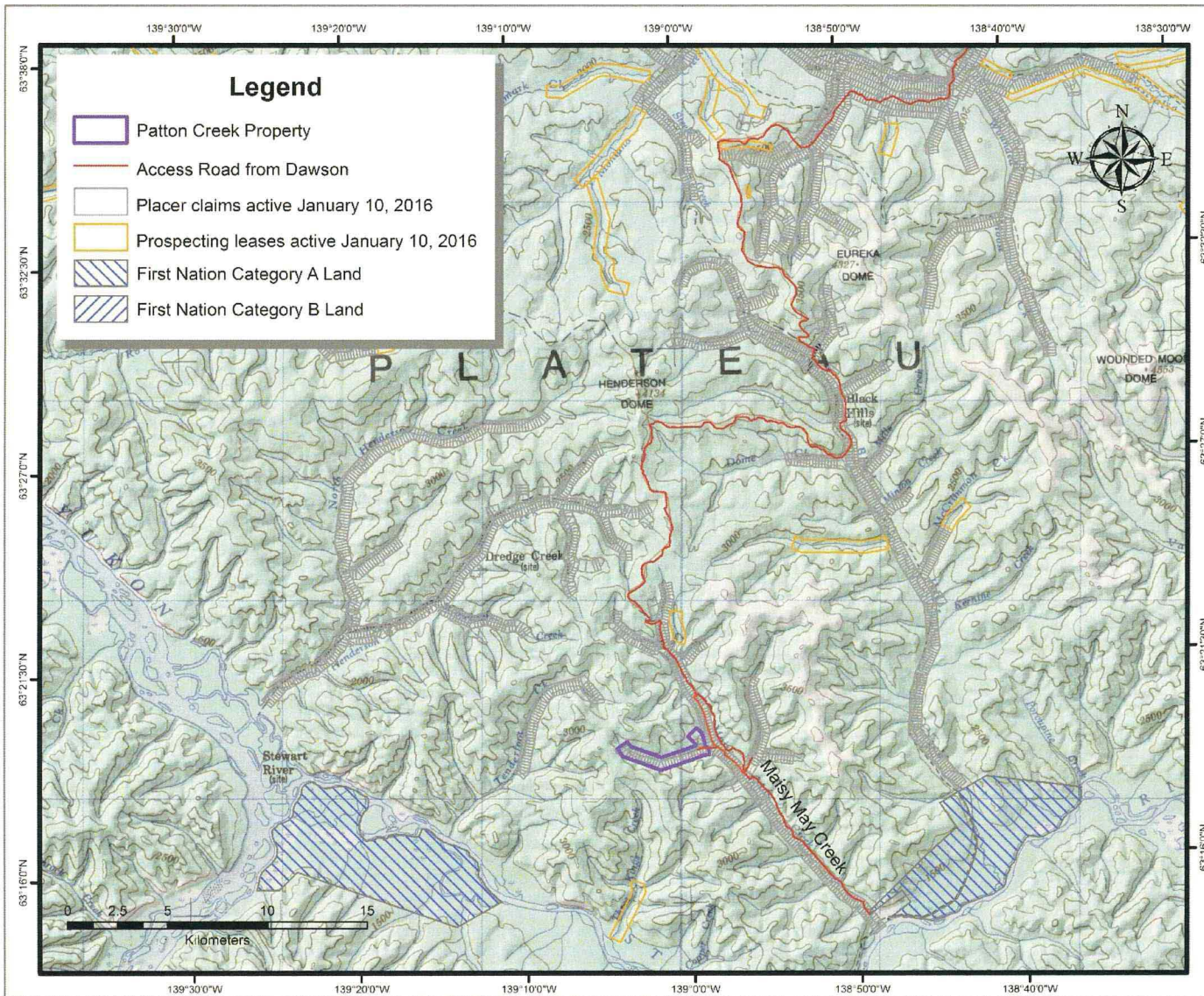


Figure 2 – Location of Patton Creek Placer Project and South Dawson region placer tenures.

Preferred Route – Via Dawson City - Overview

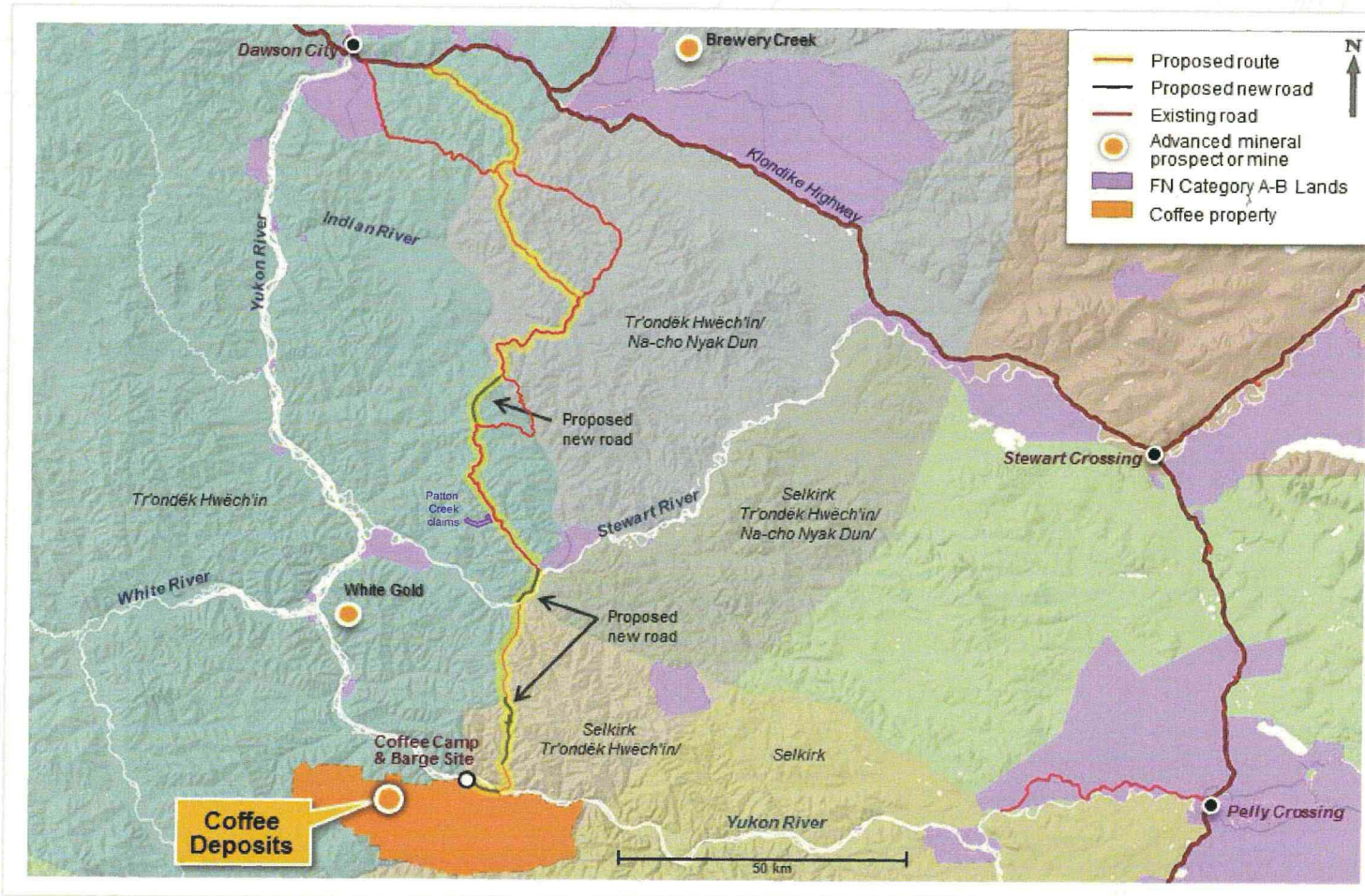


Figure 3 - Proposed new road to the Coffee Creek mine owned by Kaminak Gold Corporation from News Release, December 2015. Route is currently through Maisy May Creek and runs past the mouth of Patton Creek.

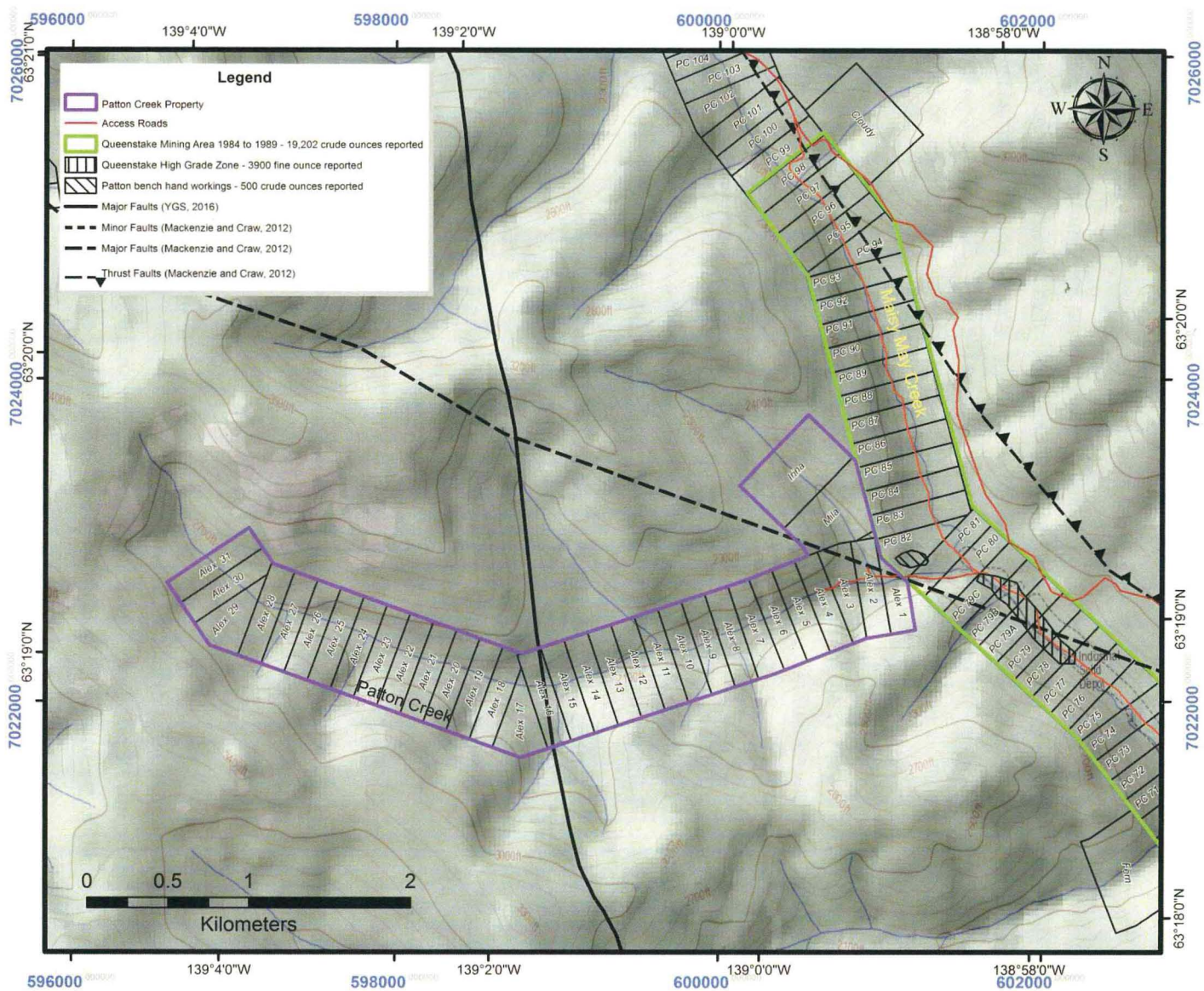


Figure 4 - Patton Creek placer claims, local access roads, major faults and adjacent placer claims.

Permitting

A Type B Water Use Licence (PM13-053) for Placer Mining and a Class 4 Mining Land Use Permit (#AP13053) are currently in place for all claims within the Patton Creek placer project. These permits are valid until February 4, 2024.

Quartz Tenure

The area of the Patton Creek placer project is coincident with the southern extent of the JP Ross property previously owned by Kinross Gold Corporation and currently owned by Selene Holdings LP (Maisy claims). A Quartz Mining Land Use permit Class 3 (LQ00293) held by Kinross Gold Corporation expired on June 17, 2015. There is no perceived conflict between the proposed placer exploration activities of Geoplacer Exploration Ltd. and the past or future quartz exploration activities.

History of Exploration and Mining – Maisy May Creek

The first documented mining activity on Maisy May Creek was by Maisy May Mines Ltd., who operated from 1980 to 1983 at a location about 11.7 km upstream of the confluence with the Stewart River.

According to Government royalty records, Maisy May Creek produced at least 25,926 crude ounces of gold between 1980 and 2010 (LeBarge, 2007; LeBarge and Nordling, 2011). The majority of that gold (19,202 crude ounces) was produced by Queenstake Resources in the period 1984 to 1989 (LeBarge, 2007). The area that Queenstake Resources mined is outlined in Figure 4 and Figure 5.

Based on the work done during the 1984 season, Queenstake estimated that with selective mining, there were (pre NI43-101, non “compliant”) “reserves” of 200,000 cubic yards (152, 911 cubic metres) of gravel with a recoverable grade of 0.012 ounces of fine gold per cubic yard (0.488 grams per cubic metre) at the property (LeBarge, 2007). This estimate was limited to their claim holdings at the time.

From 1990-1994, Jasper Equipment continued mining upstream from where Queenstake had finished mining in 1989, recovering approximately 2,650 crude ounces (LeBarge, 2007).

From 1993 to 1998, John VanEvery and Richard Fitch intermittently mined under VanEvery Inc. upstream near the headwaters of Maisy May Creek (LeBarge, 2007). Art Christiansen operated a small mine in the same area from 2007 to 2009 (LeBarge and Nordling, 2011). Mr. Christiansen was active in the area again in 2013, 2014 and 2015.

35249 Yukon Inc. mined Maisy May Creek approximately 3.5 miles (5 km) upstream from its confluence with the Stewart River from 2001 until 2003. Maisy Mae Mining Inc. bought the operation in 2006 and processed a mine cut in 2007 and 2008 located about 4 miles (7 km) upstream of the confluence (LeBarge and Nordling, 2011). The claims were later returned to 40419 Yukon Inc, which conducted a limited test program in late 2014.

H.C. Mining Ltd. conducted a test mining program on an upper right-limit Maisy May tributary in 2012, 2013 and 2014.

In 2013, Bedrock Mining Ltd. bought many of the Maisy May Creek claims (in the middle reaches) from 40419 Yukon Inc., and subsequently conducted a program of camp and access construction as well as limited test mining. In 2014, the test mining was expanded to an area on Maisy May creek downstream of the confluence of Candace Creek and just upstream of the 2014 test cut of 40419 Yukon Inc. The operation was active again in 2015.

Candace Creek Mining Ltd. conducted a placer testing program on left-limit tributary Candace Creek (also known as Moosetooth Creek) in 2013, 2014 and 2015. The program consisted of access construction, resistivity geophysics, sonic drilling, auger drilling, bulldozer trenching and excavator test-pitting.



Plate 2 - View looking north of the lower reaches of Patton Creek at its confluence with Maisy May Creek. Location of 2015 test pits are shown. Photo taken September 20, 2015.

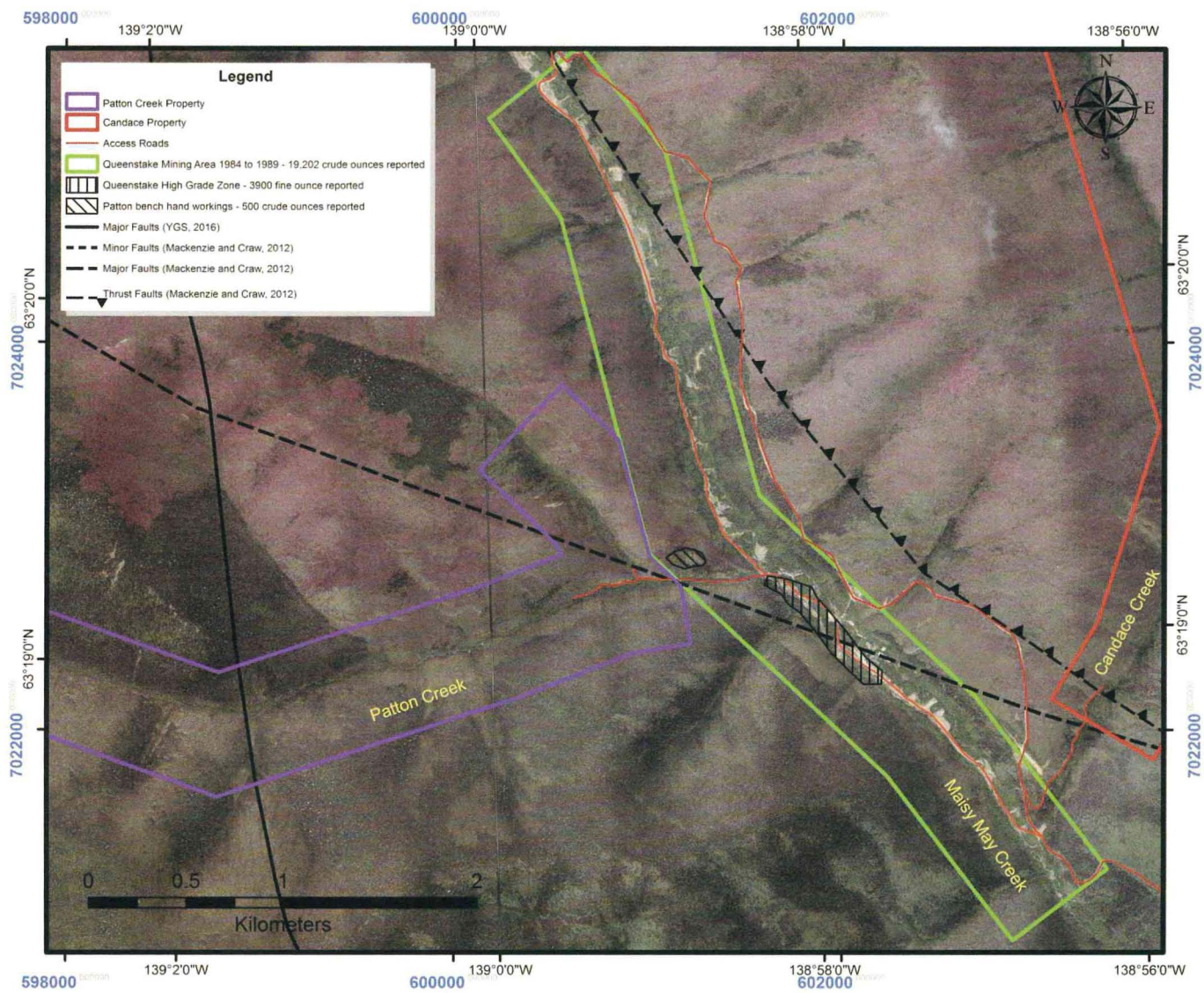


Figure 5 – Patton Creek, Candace Creek and Maisy May Creek - Location of adjacent properties and historical mining activity. A view of this areas is shown on Plate 2.

Exploration History – Patton Creek and Adjacent Maisy May Creek

Queenstake Resources (1987) mentions that hand-mining took place on a left-limit bench at the mouth of Patton Creek, beginning in the 1920s. This work was done by a Mr. Patton, for whom the creek is named. Reportedly 500 crude ounces were recovered during this time, although this is not recorded in any government royalty records. The area of these old bench workings is shown on Figure 5 and Figure 12.

In the early 1930s and again in the late 1970s, Mr. J. McDiarmid and partners (Maisy-May Mines Ltd.) dug hand shafts on Maisy May Creek beginning 1 mile from the confluence with Stewart River (Queenstake 1987a, 1987b). The best values encountered both times were at the mouth of Patton Creek (Queenstake, 1987a).

Queenstake Resources Ltd. had Patton Creek staked as a one-mile lease (PL6352) in 1987. Although no work by Queenstake is known on Patton Creek, a mining cut on Maisy May just downstream of the mouth of Patton Creek was the highest grade gravel they encountered (Queenstake 1987a; G. Gutrath 2013 pers. comm.). A total of 3892 fine ounces (at a fineness value of 780) was recovered in this area over a 300 foot mining width. The average grade was 0.016 fine oz/cubic yard (0.65 grams/cubic metre) although grades were encountered up to 0.019 fine oz/cubic yard (0.773 grams/cubic metre). This mined area is shown in Queenstake's report and on Figure 5.

Mr. Wayne Lerner also staked Patton Creek as a one-mile prospecting lease on Sept. 14, 1992. Some evidence of small collapsed excavations can be seen although no documented results of that work have been found.

Regional Bedrock Geology

The project area is situated within the Yukon-Tanana terrane, an accreted pericratonic sequence that covers a large part of the northern Cordillera from northern British Columbia to east-central Alaska (Gordey and Ryan, 2005; Colpron and Nelson, 2006). The Yukon Tanana Terrane consists of Paleozoic schist and gneiss that were deformed and metamorphosed in the late Paleozoic, and intruded by several suites of Mesozoic intrusions that range in age from Jurassic to Eocene (Colpron and Nelson, 2006). The Paleozoic rocks are pervasively foliated with at least two overprinting fabrics (MacKenzie and Craw, 2010; MacKenzie et al, 2008). During Late Permian to Early Jurassic time these rocks were tectonically-stacked along thrust faults which were parallel to regional foliation. Later tensional-extensional tectonics occurred during the mid-Cretaceous, and this resulted in brittle fracture of the Paleozoic rocks, which is likely responsible for structurally-controlled gold mineralization in the south Klondike area including the White Gold exploration camp (MacKenzie et al, 2008; MacKenzie and Craw, 2010; MacKenzie and Craw, 2012).

Regional Geophysics and Major Structures

Enhanced Residual Total Magnetic Field is shown in Figure 6, and First Vertical Derivative of Enhanced Magnetic Field is shown in Figure 7 (after Hayward et. al. 2012). The maps show several northwest-trending anomalies which may coincide with major structures and lineaments. At the lower reach of Patton Creek and trending NW along the left-limit tributary is a linear geophysical high, coincident with a fault trace mapped by MacKenzie and Craw (2012). For reference this fault trace is overlain on Figures 6 and 7. These structures and their associated cross-faults are thought to be related to structurally-controlled gold mineralization in brittle units of the Yukon Tanana Terrane including orthogneiss, amphibolite and quartzite (MacKenzie and Craw, 2010) and have been linked to the gold occurrences in the Coffee Creek area to the south (Wainwright et al., 2011). Figures 5, 6 and 7 show that the trace of this geophysical anomaly and structure across Maisy May and the lower reach of Patton Creek coincide with both the high grade placer gold zone mined in Maisy May Creek by Queenstake Resources Ltd., and the hand-mined placer gold reported from the Patton Creek left-limit bench.

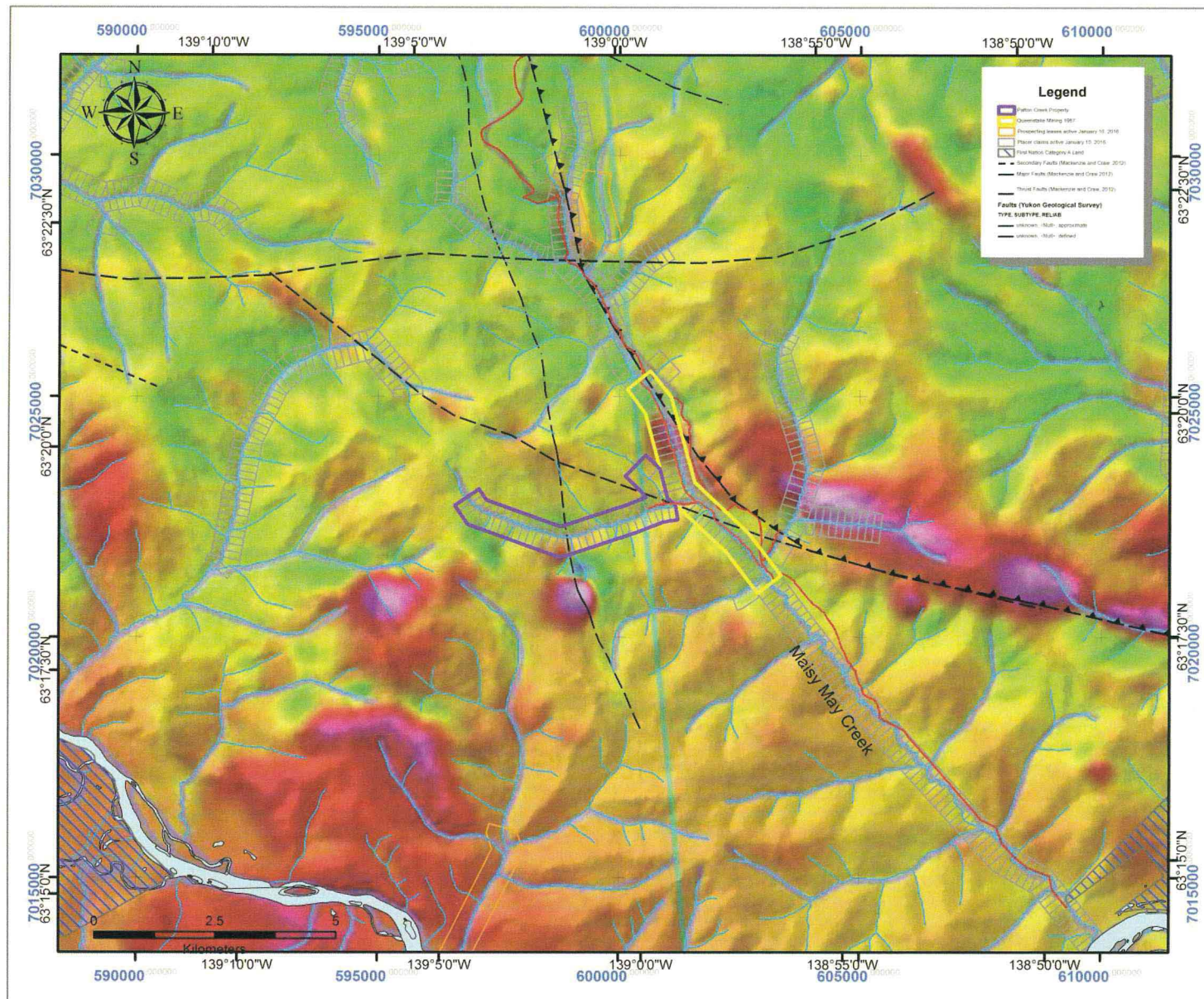


Figure 6 -- Enhanced Residual Total Magnetic Field, Maisy May Creek area, modified from Hayward et. al. (2012). Fault traces overlain from MacKenzie and Crow (2012) and YGS (2016).

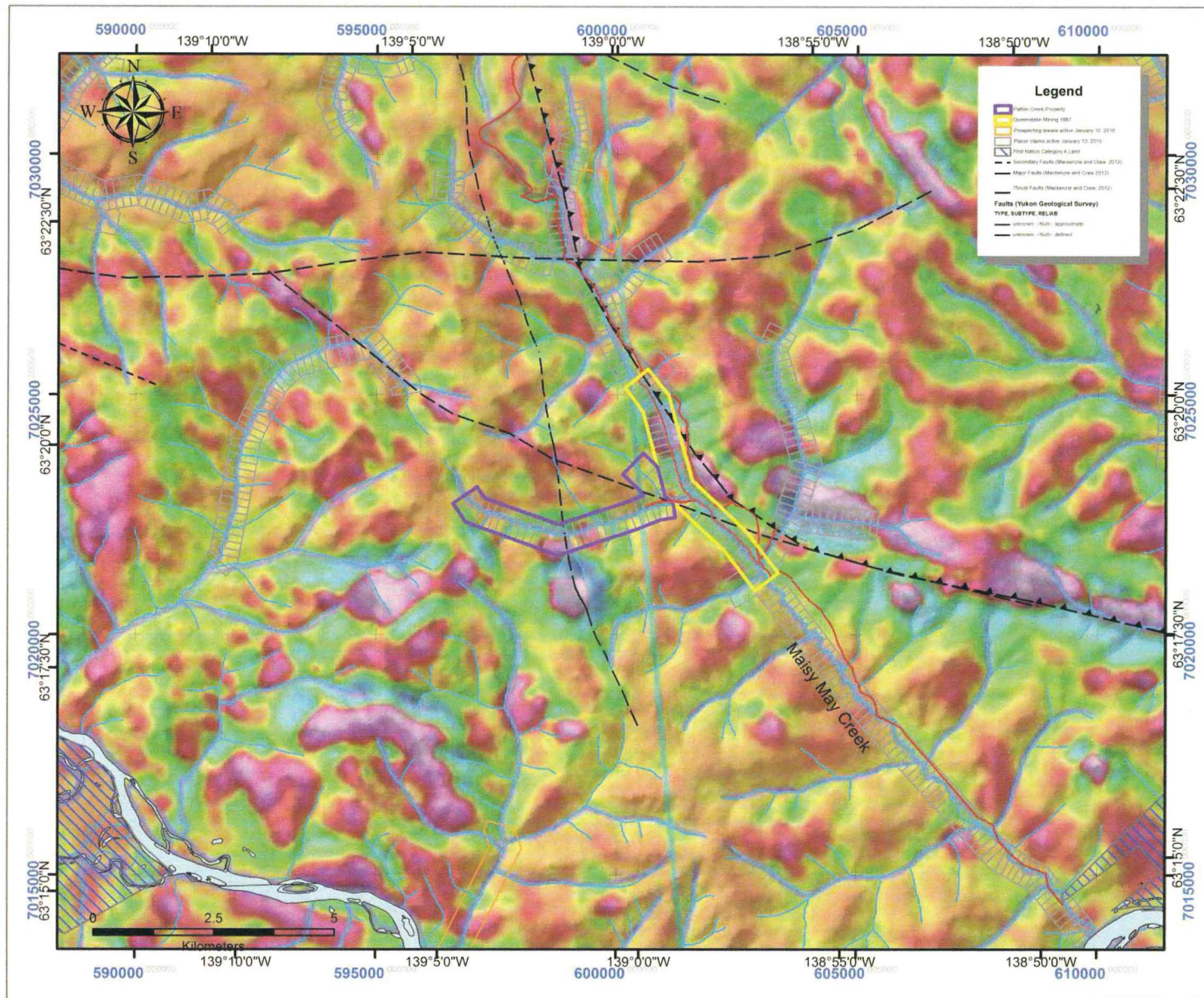


Figure 7 –First Vertical Derivative of the Enhanced Magnetic Field, Patton Creek, modified from Hayward et. al. (2012). Fault traces overlain from MacKenzie and Crow (2012) and YGS (2016).

Local Bedrock Geology

Maisy May Creek area bedrock is mapped as several metamorphic, metaplutonic and volcanic bedrock types (Figure 8). These include Late Proterozoic clastics and marble (map units PDS1 and PDS2); Devonian-Mississippian mafic volcanic rocks and serpentinite (map units DMF1 and DMF6); Late Devonian tonalite and diorite - orthogneiss (map unit MgSR); middle Permian Sulphur Creek quartz monzonite gneiss (map unit PgS); Late Triassic/early Jurassic Minto Suite intrusives (map unit LTrEJgM); and Upper Cretaceous Carmacks volcanics (map unit uKC3).

The most recent map by Yukon Geological Survey (2016) shows that the Patton Creek transects Late Proterozoic Snowcap clastics - schist (PDS1) at the mouth; Late Devonian tonalite and diorite – orthogneiss (map unit MgSR) in the mid-reaches; and Late Proterozoic Snowcap assemblage marble (map unit PDS2) in the mid- to upper reaches. Geological contacts trend N-S and NNW-SSE. Recent mapping by MacKenzie and Craw (2012) shows a thrust fault trending SE-NW along Maisy May Creek and several associated E-W and W-NW trending faults. One fault which appears to be a splay from the Maisy May thrust fault transects the lower portion of Patton Creek from SE to NW, roughly following the valley of the upper part of the lowermost left-limit tributary of Patton Creek, which is the location of the two co-discovery claims (Figure 8).

Quaternary History

Most of the south Klondike region has not been glaciated (Duk-Rodkin, 1999) and in fact strong evidence exists that all of Maisy May creek and most of Black Hills Creek escaped glaciation altogether (Jackson et al., 2001). As such, the south Klondike region is dominated by colluvium on the upper slopes and ridges, variably-buried Tertiary to Late Pleistocene alluvial terraces in mid-slope reaches and Late Pleistocene to modern alluvial fans, stream complexes and gulch deposits in the lowermost points of valleys (Jackson, 2005a; Jackson, 2005b). Major trunk valleys such as the Stewart River were the locale for meltwater channels during the Pleistocene glaciations and contain glaciofluvial terraces well beyond the maximum extent of the Cordilleran ice, however these did not affect most major tributaries (such as Black Hills, Maisy May and Henderson creeks) except at their confluence.

Property Surficial Geology

Along Patton Creek lie surficial units of several ages and types, as mapped by Jackson (2005a) and shown in Figure 9. These include: CEaP/AtT (Pleistocene Colluvial-Aeolian sediments overlying Tertiary Alluvial Terrace sediments) on the left limit of Patton at the confluence with Maisy May Creek; CEaP (Pleistocene Colluvial-Aeolian sediments) along the southern slope of the valley (right limit); and Cb-v (Colluvial blanket-veneer) on the hills above the creek.

Much of the valley centre is mapped as Cx (Colluvial complex); however field examination by the author in 2013 and 2014 revealed that the centre of the narrow valley should be mapped as ACxP (Pleistocene Alluvial Complex sediments) and Ax (alluvial complex sediments). In addition, field observations reveal that the buried Tertiary alluvial terrace found at the mouth continues up the valley some distance, and therefore parts of the valley on both sides should be mapped as CEaP/AtT (Pleistocene Colluvial-Aeolian sediments overlying Tertiary Alluvial Terrace sediments). The scale of regional mapping by Jackson (2005a, 2005b) was too large to include that level of detail in the published surficial maps.



Plate 3 - View looking downstream (southeast) of Patton Creek at its confluence with Maisy May Creek, June 2013. The approximate trace of the fault which transects Maisy May from Candace Creek to Patton Creek can be discerned as running from the linear drainages in the distance to the location of the observer.



Plate 4 - Similar view to Plate 3 aerial photo rendered in Google Earth, with fault traces of Mackenzie and Crow (2012) overlain.

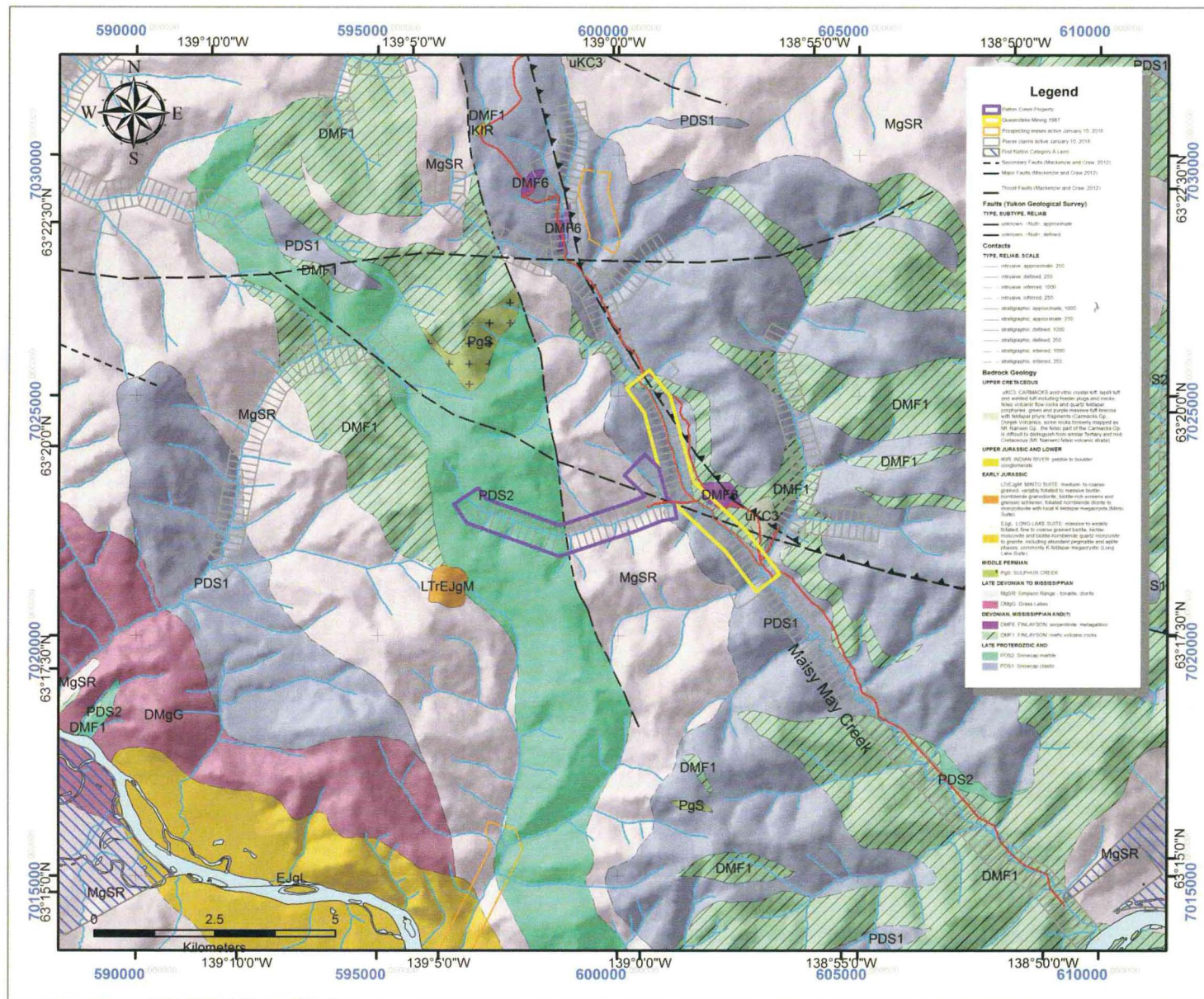


Figure 8 - Bedrock Geology: Maisy May and Patton Creeks, after Gordey and Ryan (2005); MacKenzie and Crow (2012) and Yukon Geological Survey (2016). Bedrock unit legend detailed in text.

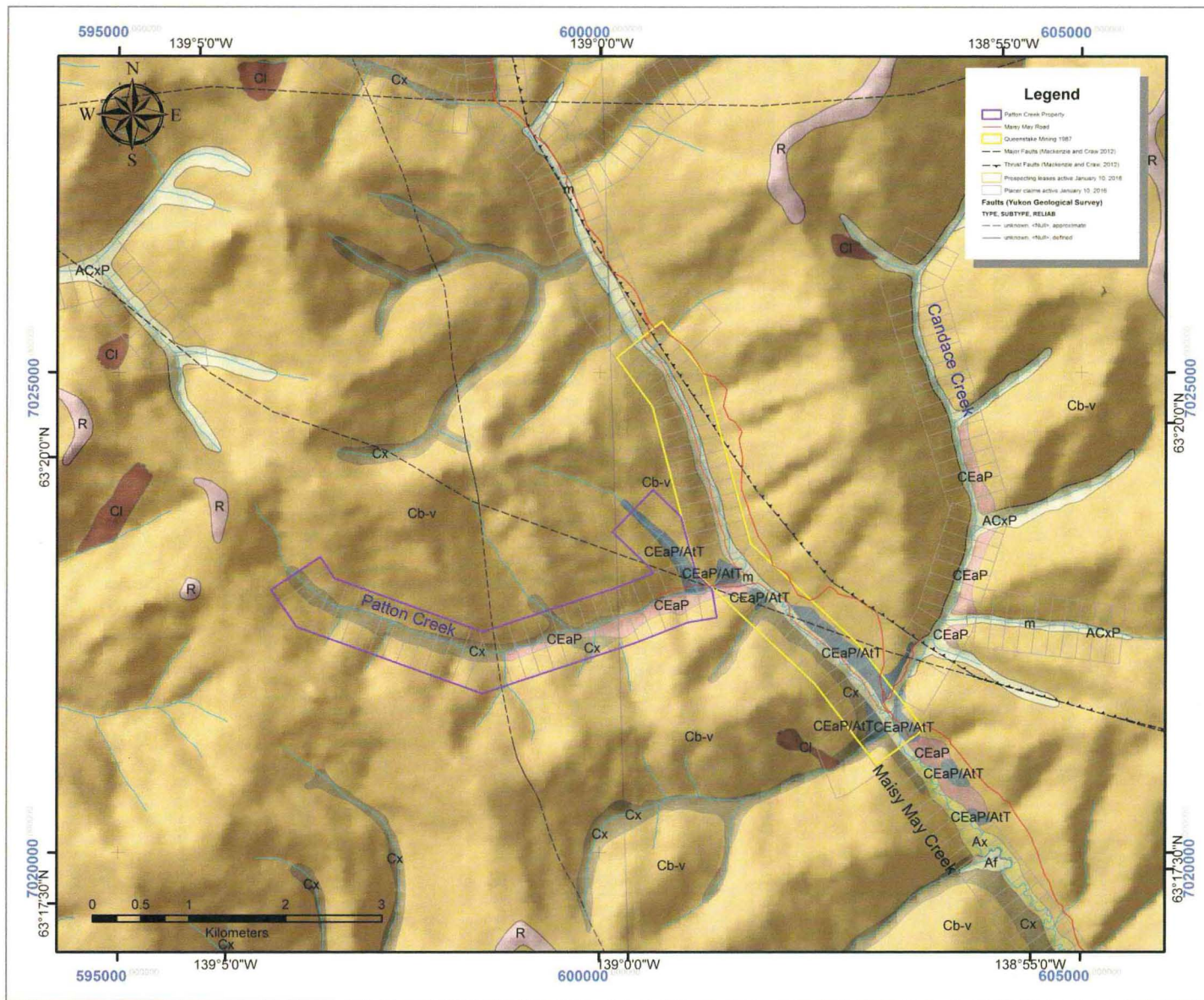


Figure 9 - Surficial Geology, Patton Creek, after Jackson (2005a, 2005b). Fault traces overlain from MacKenzie and Craw (2012) and Yukon Geological Survey (2016). Surficial unit legend also in text.

2014 Exploration Program

The 2014 exploration program on Patton Creek is documented in the report by LeBarge (2014) and therefore will only be summarized here. It consisted of resistivity geophysics, auger drilling, excavator test-pitting, geological logging of drill hole and test pits, and processing of test pit and drill hole samples for gold and heavy minerals. The April 2014 resistivity program was aided by the Caterpillar D8R bulldozer (Bedrock Mining Company Ltd.) which stripped snow and small willows from along the resistivity lines.

Resistivity Geophysics

The geophysical contractor for 2014 was Kryotek Arctic Innovation Inc. The images were interpreted by James Coates. Two lines of geophysics were conducted along Patton Creek on Prospecting Lease ID01112 (later converted to the Alex 1-31 claims). Line PC A was surveyed a short distance up left limit tributary Mila Creek, while line PC B was surveyed on the left limit of Patton Creek just downstream from the mouth of Mila Creek. In June 2014, resistivity geophysical lines MC A and IC A were surveyed on Mila Creek on the Mila and Irina co-discovery claims. In August 2014, resistivity line PC C was surveyed on Patton Creek on the Alex 3 placer claim.

Auger Drilling

Sixteen 6-inch diameter auger drill holes were completed in 2014, for a total of 167 feet (50.9 metres) of drilling. Nine of the drill holes were collared on resistivity line PC A (on Mila Creek); five of the drill holes were collared on resistivity line PC B (on Patton Creek downstream of Mila Creek) and two of the drill holes were collared on resistivity line PC C (on Patton Creek upstream of Mila Creek).

Test-pitting

A Caterpillar D8R bulldozer was used to strip snow and small trees to facilitate conducting geophysical survey lines PC A on Mila Creek and PC B on Patton Creek. The Caterpillar 225 excavator (equipped with a "frost bucket") was brought to Patton Creek in August, and proceeded to dig a test pit (MILA14-01) on resistivity line PC A after completion of the auger drilling. The test-pit was centred on auger drill holes PC A14 BH-02 and PC A14BH-04. Stratigraphy exposed in the excavator test-pit consisted of 6 to 8 feet (1.8-2.5 m) of organics and black muck (with minor gravel lenses), overlying 3 to 4 feet (0.9-1.2 m) of angular, poorly-sorted sandy pebble-cobble gravel with muck lenses, overlying 2 to 3 feet (0.6-0.9m) of decomposed, green chlorite schist.

Sample Processing

Samples from the drill holes and the excavator test-pit were processed by hand using a "Le Trap" long tom sluice with a hopper feeder. A Honda 1.5 inch pump supplied the water for sluicing and panning. Sluice concentrates were obtained from the Le Trap sluice and hand-panned to recover final gold and heavy minerals.

Discussion of Results

Overall, the 2014 exploration program was successful in defining the thicknesses of the gravel and muck in the location of the excavator pit, while the auger drilling in conjunction with the resistivity geophysical surveys confirmed the interpreted depths to bedrock. The auger drilling also confirmed the presence of fine gold, heavy minerals and accessory limestone rock fragments in several of the holes, although no coarse gold grains were recovered. The angular nature of the fine gold particles may indicate input from a local bedrock gold source; and marble units are often associated with increased gold mineralization in south Klondike drainages including Indian River and Ten Mile Creek.

Rationale for 2015 Exploration Program

The gravel volumes obtained by the auger drill and the bulk test from Mila Creek (Mila 2014-01) were relatively small, and although some fine gold was recovered it is expected that the majority of the placer gold in Patton Creek would be coarser, similar in grain size to gold found on Maisy May and Candace Creek.

The most detailed information on the grain size distribution of placer gold in Maisy May Creek is documented from Jasper Equipment's 1990-1994 mining season (LeBarge, 2007). It showed that the placer gold recovered was 5% greater than 4 mesh (4.76 mm); 80% was between 4 mesh and 40 mesh (4.76 mm to 0.420 mm) and 15% was smaller than 40 mesh (.420 mm). This gold grain size range could be considered relatively coarse, as 40 mesh is generally considered to be the cut-off size for fine gold.

Figure 10 shows that according to McCulloch et.al, (2003) the size distribution of gold grains within a placer deposit will have a substantial effect on both the calculated grade and the accuracy of sampling – essentially the more coarse gold present, the more erratically they are distributed and the larger sample size necessary to reduce sampling errors. Clifton et. al. (1969) recommend that that to ensure adequate representation, a field sample should be sufficiently large to contain at least 20 gold particles. Figure 11 (after Clarkson, 1993) illustrates a similar concept for drill samples.

Evidently, the 2014 samples from Patton Creek would not have been sufficient to gain a representative amount of placer gold. Therefore, a recommended program of sampling would include bulk tests of up to 50 cubic yards (40 cubic metres) each at key points within the Patton Creek drainage. This sampling should target intervals along the entire stratigraphic section as well as the gravel/bedrock contact.

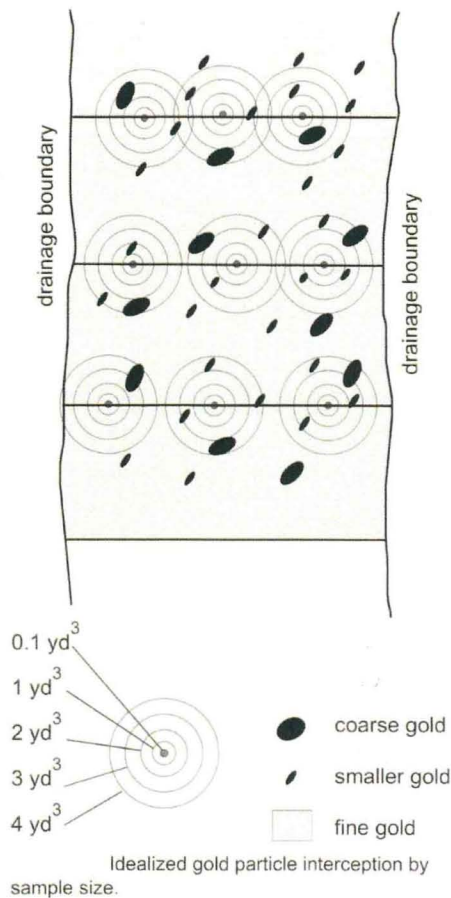


Figure 10 - Gold particle interception in placer deposits by sample size. After Fig. 4.2, McCulloch et. al., 2003.

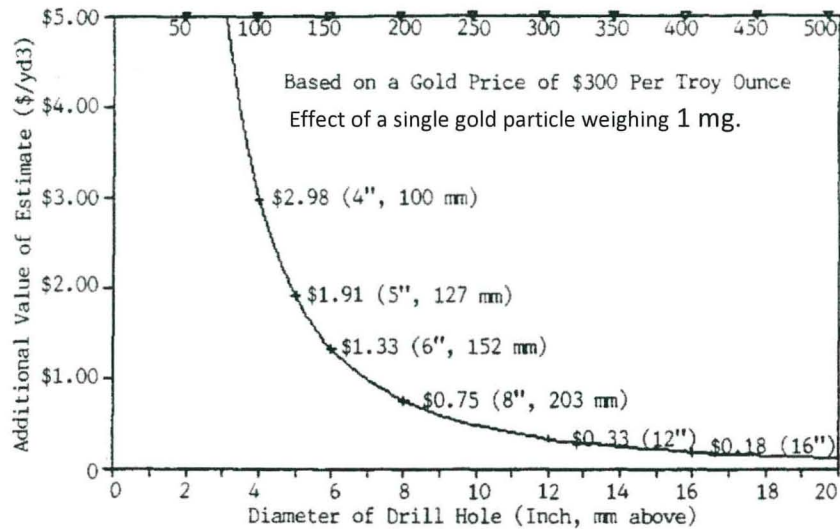


Figure 11 - Sensitivity of drill hole size, showing the amount that a 1 mg gold particle would add to the value estimate (after Clarkson, 1993). Diagram illustrates that drill holes 8 inches in diameter and over are preferable, even for deposits with gold grains of 1 mg and smaller.

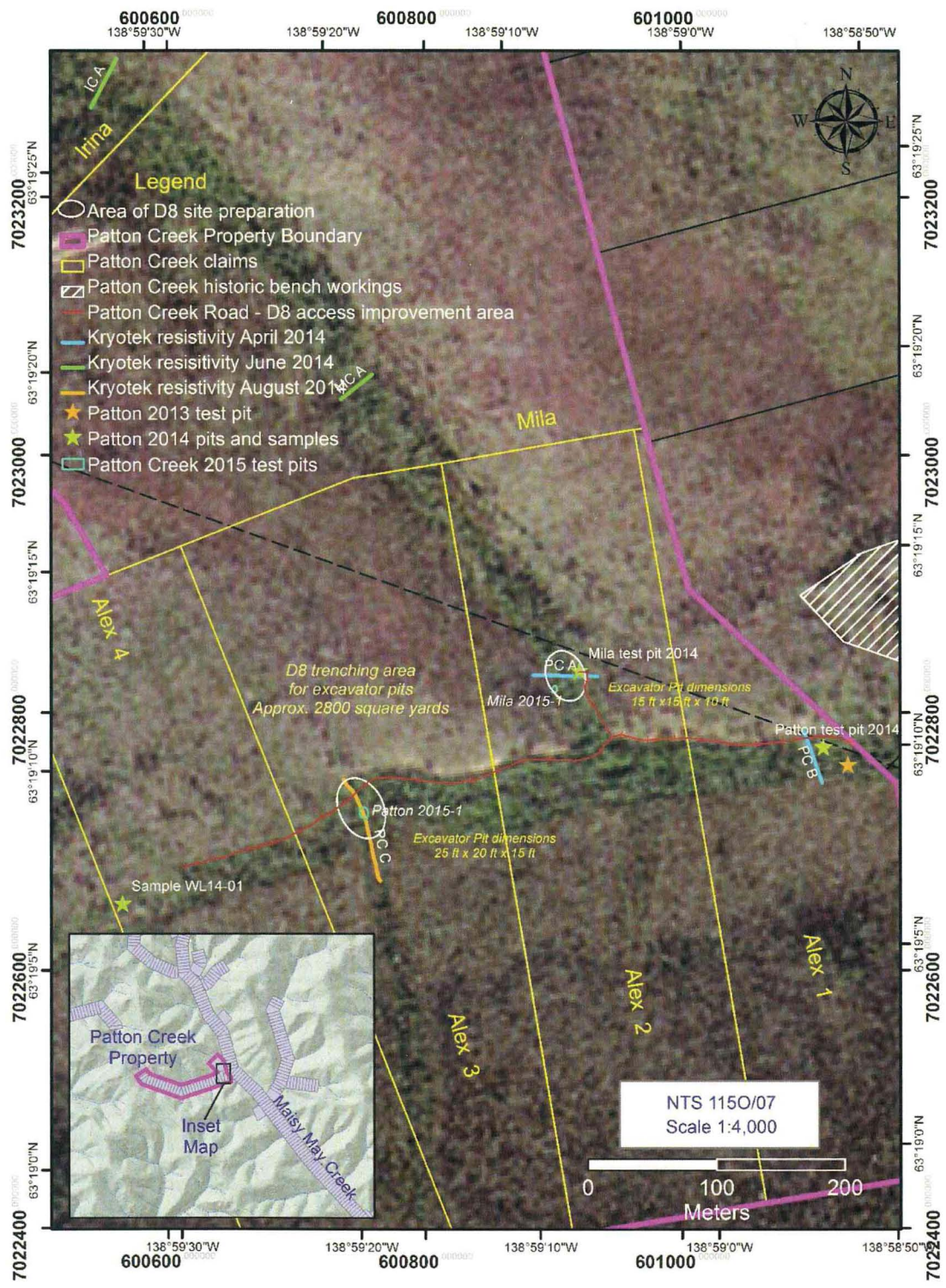


Figure 12 - Location of 2014 resistivity lines, 2014 auger drill holes, and 2013, 2014 and 2015 test pits on Patton Creek.

2015 Placer Exploration Program

Excavation of test pits

The 2015 exploration program was initiated when a D8R bulldozer from Bedrock Mining Company Inc. was mobilized to improve the access on the Alex 1 to 3 claims and on the Mila claim. In addition, the bulldozer did trenching in the area of the two test pits. Table 2 gives the geographic coordinates of the 2015 test pits, which are also shown on Figure 12 and Plate 8.

Total preliminary trenching of both pits was estimated to be 2800 square yards. Test pit Mila 2015-01 was estimated to have dimensions of 15 ft. by 15 ft. by 10 ft. (4.6 m X 4.6 m X 3.0 m). Stratigraphy exposed in the pit (Plate 5) consisted of 6 to 7 feet (1.8-2.1 m) of organics and black muck (with minor gravel lenses), overlying 3 feet (0.9 m) of frozen, angular, poorly-sorted sandy pebble-cobble gravel. Towards the right limit, a decomposed, green chlorite schist was exposed beneath the sandy pebble cobble gravel, however bedrock was not reached in the centre of the pit.



Plate 5 - Test pit Mila 2015-01 on Mila Creek on the left limit of Patton Creek. The location is shown on Figure 12.



Plate 6 - Test pit Patton 2015-01 on Patton Creek. Location is shown on Figure 12.

Test pit Patton 2015-01 had dimensions of 25 ft. by 20 ft. by 15 ft. (7.6 m X 6.1 m X 4.6 m). Stratigraphy exposed in the pit (Plate 6) consisted of 10 to 12 feet (3.0 – 3.7 m) of organics and black muck (with minor gravel lenses), overlying 6 to 8 feet (1.8 – 2.4m) of subangular, cobble-pebble gravel with abundant marble clasts. Some angular bedrock pieces of orthogneiss were encountered on the bottom of the hole. However, a definitive bedrock contact was not exposed, in spite of stepping the excavation down on one side of the pit to increase the hoe’s reach.

Lithological Characteristics of Gravel

Gravel clasts throughout the pit in Patton Creek (PATTON 2015-01) were a mixture of subangular to subrounded marble, subangular schist, quartzite and orthogneiss, and rare subangular serpentinite. Marble clasts were more dominant in the upper parts of the gravel layer, while orthogneiss clasts increased in abundance with depth.

Gravel recovered from the Mila Creek pit (MILA 2015-01) was very similar to that on Patton Creek, although marble clasts were rare - chlorite schist clasts were the dominant type.



Plate 7 - A typical assortment of gravel clasts from Patton Creek included rounded to subrounded marble; angular schist and orthogneiss; occasional vein quartz; and rare subangular to angular serpentinite. Some marble clasts exhibited homolithic “auto” breccia textures with hematite-staining.

Table 2 - Geographic Coordinates of 2015 Test Pits, Patton Creek.

Pit Name	Latitude	Longitude
MILA 2015-1	63° 19' 11.662" N	138° 59' 8.378" W
PATTON 2015-1	63° 19' 8.709" N	138° 59' 19.259" W

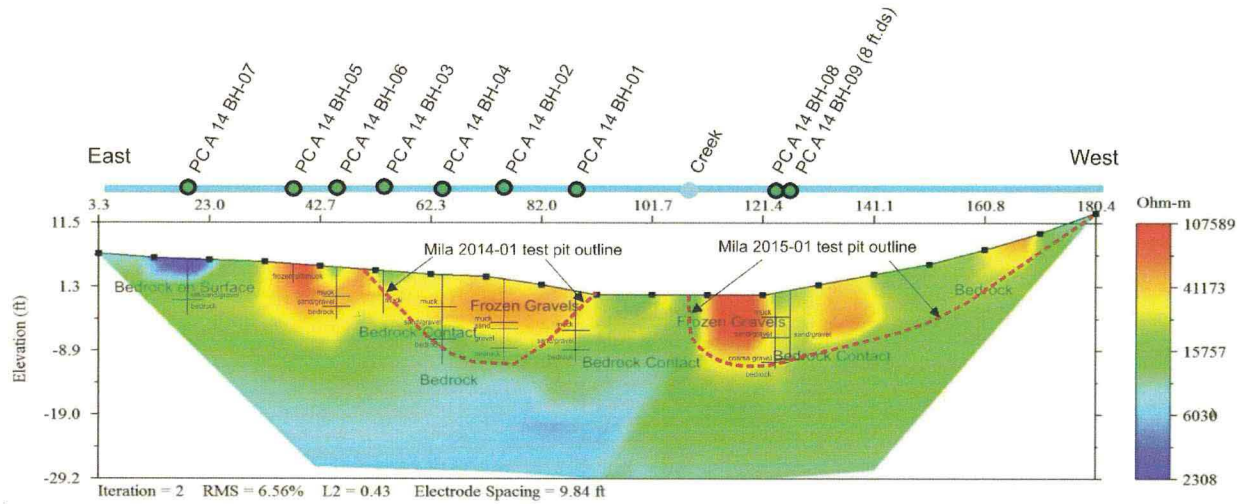


Figure 13 - Drill holes PC A 14 BH-01 to PC A 14 BH-07 and the two Mila test pit outlines plotted on Kryotek Line PC A (Coates, 2014a). View looking downstream on Mila Creek. This line is shown in Figure 12.

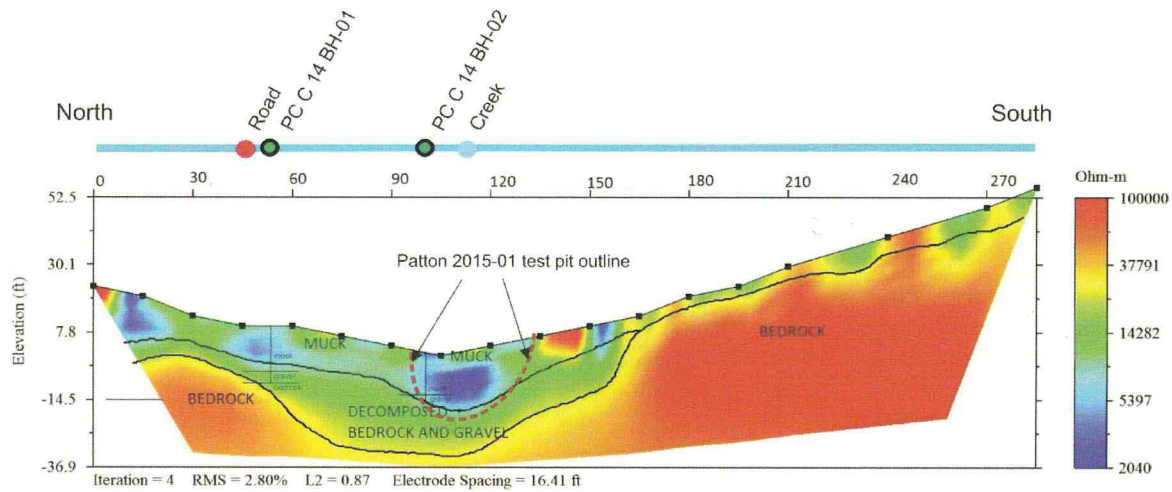


Figure 14 - Drill holes PC C 14 BH-01 to PC C 14-02, and test pit Patton 2015-01 plotted on Kryotek Line PC C (2014). View looking downstream on Patton Creek. Line is shown on Figure 12.



Plate 8 - View of Patton and Mila Creeks showing the 2015 test pits and access road from Maisey May Creek. Photo taken September 20, 2015.

Sample Processing

Samples from the excavator test-pits were processed using a custom-made ATV-portable trommel. The excavator directly fed the trommel by slowly washing material from the hoe bucket into the trommel hopper. The trommel was powered by a generator-powered electric motor and equipped with a ½ inch screen which fed to a 6 foot sluice run lined with unbacked Nomad matting and expanded metal riffles, followed by a 4 foot "Le Trap" long tom sluice run (Plate 9). A Honda 1.5 inch pump supplied the water for sluicing and panning. Sluice concentrates were hand-panned to recover final gold and heavy minerals.



Plate 9 – The test trommel was mounted on an ATV-portable frame and had a ½ inch screen. Powered by an electrical motor with water supplied by a 1.5 inch pump, sluiced material was fed to a 6 foot aluminum sluice run with expanded metal riffles over unbacked Nomad matting, followed by 4 feet of a "Le Trap" sluice run. Gravel was fed directly to the hopper by the excavator.

Table 3 - Gold and Heavy Mineral Results, Patton Creek 2015 Exploration Program.

Pit number	Creek	Sample number	Position in gravel column	Gold Recovered (visual estimate)	Heavy minerals	Approximate Volume (litres)
Patton 2015-01	Patton	PATT15-1	top of gravel at muck contact	1 coarse colour, several fine colours	Abundant medium magnetite, garnet	3 litres
Patton 2015-01	Patton	PATT15-2	top of gravel	1 coarse colour, 3 medium colours, 3 fine colours	Abundant medium magnetite, garnet	400 litres
Patton 2015-01	Patton	PATT15-3	five feet from top of gravel	2 large colours, 3 medium colours, 4 fine colours	Abundant fine magnetite	400 litres
Patton 2015-01	Patton	PATT15-4	three feet from top of gravel	2 angular small colours	Abundant fine magnetite, garnet, pyrite	500 litres
Patton 2015-01	Patton	PATT15-5	four feet from top of gravel	2 medium colours, 6 angular fine colours	Abundant magnetite, garnet, pyrite, cinnabar	600 litres
Patton 2015-01	Patton	PATT15-6	three feet from top of gravel	2 medium colours, 4 fine colours	Abundant magnetite, garnet, pyrite	600 litres
Mila 2015-01	Mila	M15-1	top of gravel	2 large colours, 6 medium colours, 20 fine colours	Abundant magnetite, garnet, pyrite	500 litres

Gold and Heavy Mineral Results

Table 3 documents the gold and heavy mineral results from the excavator test pits, along with approximate volume of each sample. Placer gold was recovered from every sample, and deeper samples nearer to bedrock had increased coarser colours, although coarser grains of gold were also found at the top of the gravel. Heavy mineral amounts and the grain size of heavy minerals showed an increase with increasing depth.



Plate 10 - Sample PATT15-1 was a single pan at the top of the gravel layer in pit PATTON 2015-01. A hackly coarse gold grain and several small colours were recovered along with abundant crystalline magnetite and garnet.

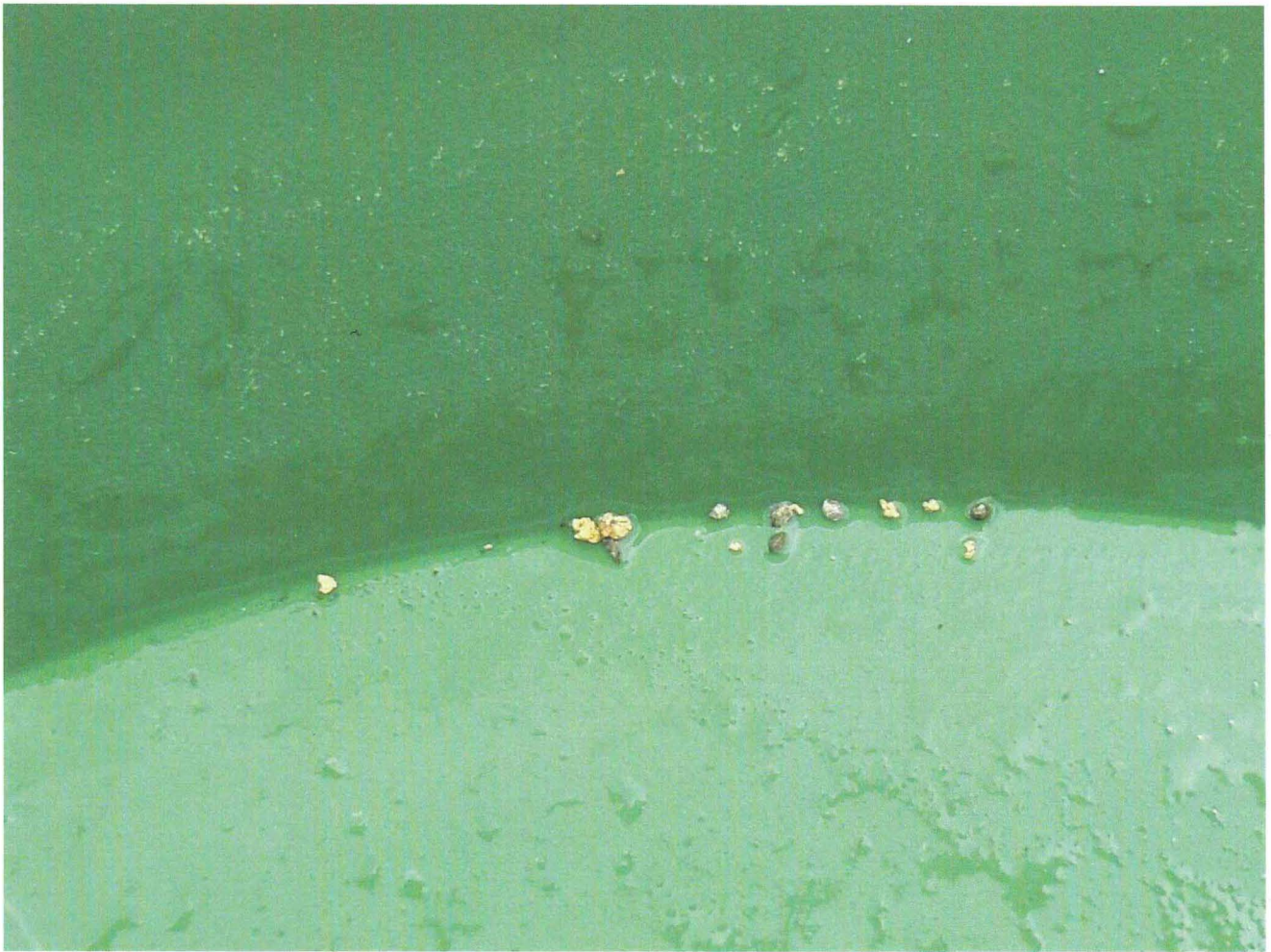


Plate 11 - Sample PATT15-3 from test pit PATTON 2015-01 contained coarse to medium sized hackly gold grains as well as magnetite and rutile.



Plate 12 - Gold recovered from Mila Creek pit MILA 2015-01 (Sample M15-1) was a mixture of angular to hackly coarse grains and fine to very fine colours. Heavy minerals included abundant pyrite.

Conclusions and Recommendations

The 2015 exploration program was successful in revealing the characteristics of the stratigraphic sections in both Patton Creek and Mila Creek. Gravel and muck thicknesses encountered were consistent with interpretations from previous exploration programs of resistivity geophysics and auger drilling.

Significantly, Patton Creek test pit PATTON 2015-01 intersected thawed sandy cobble gravels, which would be fairly easily mined. This pit appeared to reach close to bedrock, as indicated by the abundance of angular orthogneiss clasts in the deepest test samples. However, the geophysics in profile PC C (Figure 14) indicates that a true bedrock contact lies approximately 1 to 2 metres deeper than the maximum depth reached by the hoe. Unfortunately, the hoe was unable to excavate deeper without significantly expanding and stepping down the test pit, which was not done due to constraints on the availability of the equipment.

Unworn, hackly gold grains were encountered from top to bottom (throughout the gravels) in the PATTON 2015-01 test pit. Placer gold was recovered in every sample, but values were inconsistent – nearly as many gold grains were recovered in one pan sample from the top of the gravels, as were later recovered in a 600 litre sample from deep in the test pit.

Test pit Mila 2015-01 intersected pervasively-frozen muck and gravel, including a significant gravel unit at the deepest point in the pit. The hoe was not able to penetrate this gravel thoroughly due to its frozen nature, but profile PC A (Figure 13) indicates that the bedrock contact was within 1 or 2 metres of the deepest part of the pit.

The angular, unworn placer gold encountered from Mila Creek in pit MILA 2015-01 was a mixture of coarser and fine to very fine colours. These characteristics support the hypothesis that the regional structure transecting Mila Creek (as indicated by geological mapping and regional geophysics) may indeed be a mineralized feature coincident with a bedrock gold source.

The abundance of marble clasts in the PATTON 2015-01 test pit indicates a significant provenance of the Patton Creek alluvium from the Late Proterozoic Snowcap assemblage marble (map unit PDS2) which is mapped upstream. The local marble clasts often showed brecciated textures - this would be a favourable indicator for prospective bedrock gold mineralization. In addition, marble units are often associated with increased placer gold mineralization in other south Klondike drainages, including Indian River and Ten Mile Creek.

The ATV portable trommel, while an improvement over previous testing programs, proved inadequate for the 2015 testing program on Patton Creek. It was difficult and time-consuming to trickle feed material from the excavator into the small hopper, which resulted in a less than optimal amount of gravel tested during the 2015 program.

It is recommended that much larger bulk tests be conducted in the vicinity of both 2015 test pits on Patton Creek and Mila Creek. The previous test pits should be re-excavated and expanded in size to allow greater depth penetration, with the aim of exposing a significant area on bedrock. A wash plant with a minimum capacity of 25 cubic yards an hour should be used to process gravel samples, including the approximately 20 cubic yards of material which is stockpiled adjacent to pit PATTON 2015-01.

Table 4 - 2015 Placer Exploration Statement of Costs, Patton Creek.

2015 Placer Exploration Program	Rate	Subtotal	GST	Total	Invoice
Geoplacer Exploration Ltd.- Project management, geological descriptions, sample processing, mobilization to and from Whitehorse	8 days@\$500/day	\$4,000.00	\$0.00	\$4,000.00	No
Geoplacer Exploration Ltd.- Final Report Production	4 days@\$500/day	\$2,000.00	\$0.00	\$2,000.00	No
ATV - Geoplacer Exploration Ltd.	8 days@\$40/day	\$320.00	\$0.00	\$320.00	No
ATV Transport Trailer - Geoplacer Exploration Ltd.	8 days@\$16/day	\$128.00	\$0.00	\$128.00	No
ATV tub trailer - Geoplacer Exploration Ltd.	8 days@\$10/day	\$80.00	\$0.00	\$80.00	No
2 inch trash pump - Geoplacer Exploration Ltd.	8 days@\$10/day	\$80.00	\$0.00	\$80.00	No
2000 Watt Generator - Geoplacer Exploration Ltd.	8 days@\$10/day	\$80.00	\$0.00	\$80.00	No
La Tierra Resources Ltd. - Field assistance, equipment operation, prospector	7 days@\$350/day	\$2,450.00	\$122.50	\$2,572.50	#2015-02
Geoplacer Exploration Ltd. - Mobilization from Whitehorse to Patton Creek return	1400 km@0.60/km	\$840.00	\$0.00	\$840.00	No
La Tierra Resources Ltd. - Mobilization from Dawson to Patton Creek return	280 km@0.60/km	\$168.00	\$8.40	\$176.40	#2015-02
Tatra Ventures Ltd. - Caterpillar 225 excavator rental (in-kind contribution)	40 hours @\$120/hr	\$4,800.00	\$0.00	\$4,800.00	No
Bedrock Mining Company Inc. D8R bulldozer Invoice #9	19 hours @\$275/hr	\$5,225.00	\$261.25	\$5,486.25	#9
Bedrock Mining Company Inc. Diesel fuel supplied on-site Invoice #9	638 litres@\$1.00/litre	\$638.00	\$31.90	\$669.90	#9
Van Every Inc. - mob of excavator (demob covered by Tatra)	15 hours@\$190/hr	\$2,850.00	\$142.50	\$2,992.50	#6153
Camp costs	14 person days@\$100/day	\$1,400.00	\$0.00	\$1,400.00	No
Totals		\$25,059.00	\$566.55	\$25,625.55	

Statement of Qualifications – William LeBarge, Geoplacer Exploration Ltd.

I, William LeBarge, of 13 Tigereye Crescent, Whitehorse, Yukon, Canada, DO HEREBY CERTIFY THAT:

1. I am a Consulting Geologist with current address at 13 Tigereye Crescent, Whitehorse, Yukon, Canada, Y1A 6G6.
2. I am a graduate of the University of Alberta (B.Sc., 1985, Geology) and the University of Calgary (M.Sc., 1993, Geology – Sedimentology)
3. I am a Practicing Member in Good Standing (#37932) of the Association of Professional Engineers and Geoscientists of British Columbia (APEGBC).
4. I have practiced my Profession as a Geologist continuously since 1985.
5. I am author of the report entitled: "PATTON CREEK PLACER PROPERTY, DAWSON MINING DISTRICT, YUKON TERRITORY, Final Report on YMEP15-042, Yukon Mineral Exploration Program (YMEP) Target Evaluation Module, by William LeBarge, Geoplacer Exploration Ltd."
6. I am President and sole shareholder of Geoplacer Exploration Ltd., a Yukon Registered Company.
7. The aforementioned report is based on my personal observations and interpretation and compilation of previously existing data.

Dated this 28th day of January, 2016

William LeBarge, P. Geo.



References

- Clarkson, R., 1993. An Evaluation of the Gold Recovery of Placer Drills Using Radiotracers, Indian and Northern Affairs Canada, Yukon Region, Open File 1993-3(T), 79 p.
- Clifton, H.E., Hunter, R.E., Swanson, F.J., and Phillips, R.L., 1969. Sample Size and Meaningful Gold Analysis, Geological Survey Professional Paper 625-C, 20 p.
- Coates, J. 2014a. Patton and Mila Creeks, Yukon, Geophysics Report on Prospecting Lease ID01112 by Kryotek Arctic Innovation Inc., April 18, 2014. Unpublished report, 9 p.
- Coates, J. 2014b. Mila Creek, tributary to Patton Creek, Geophysics Report on Mila and Irina claims by Kryotek Arctic Innovation Inc., June 4, 2014. Unpublished report, 10 p.
- Colpron, M. and Nelson, J.L. (eds.), 2006. Paleozoic evolution and metallogeny of pericratonic terranes at the ancient Pacific margin of North America, Canadian and Alaskan Cordillera. Geological Association of Canada, Special Paper 45, 523 p.
- Duk-Rodkin, A., 1999. Glacial Limits Map of Yukon Territory. Geological Survey of Canada, Open File 3694, Exploration and Geological Services Division, Yukon Region, Indian and Northern Affairs Canada, Geoscience Map 1999-2, 1:1 000 000 scale.
- Gordey, S.P. and Ryan, J.J., 2005. Geology map, Stewart River area (115 N, 115-O and part of 115 J), Yukon Territory. Geological Survey of Canada, Open File 4970, 1:250 000 scale.
- Hayward, N., Miles, W., and Oneschuk, D. 2012. Geophysical Series, Detailed Geophysical Compilation Project, Yukon Plateau, Yukon, NTS 115I, J, K, N, O, P and 116A and B; Geological Survey of Canada Open File 7279; scale 1:350 000.
- Jackson, L.E., Jr., Shimamura, K., and Huscroft, C.A., 2001. Late Cenozoic geology, Ancient Pacific Margin NATMAP Report 3: A re-evaluation of glacial limits in the Stewart River basin of Stewart River map area, Yukon Territory. Geological Survey of Canada, Current Research, 2001-A3, 8 p.
- Jackson, L.E., Jr., 2005a. Surficial Geology, Stewart River, Yukon Territory; Geological Survey of Canada, Open File 4583, scale 1:50 000.
- Jackson, L.E., Jr. 2005b. Surficial Geology, Black Hills Creek, Yukon Territory; Geological Survey of Canada, Open File 4584, scale 1:50 000.
- LeBarge, W.P., 2007. Yukon Placer Database—Geology and mining activity of placer occurrences, Yukon Geological Survey, 2 CD-ROMs.
- LeBarge, W.P., 2014. Patton Creek Placer Property, Dawson Mining District, Yukon Territory. Yukon Mineral Exploration Program, Grant Number YMEP14-047, 2014 Final Report. 56 p.
- LeBarge, W.P., and Nordling, M.G., 2011. Yukon Placer Mining Industry 2007-2009. Yukon Geological Survey, 151 p.

MacKenzie, D., Craw, D., and Mortensen, J.K., 2008. Structural controls on orogenic gold mineralisation in the Klondike goldfield, Canada. *Mineralium Deposita*, vol. 43, p. 435-448.

MacKenzie, D.J. and Craw, D., 2010. Structural controls on hydrothermal gold mineralization in the White River area, Yukon. *In: Yukon Exploration and Geology 2009*, K.E. MacFarlane, L.H. Weston and L.R. Blackburn (eds.), Yukon Geological Survey, p. 253-263.

MacKenzie, D. and Craw, D., 2012. Contrasting structural settings of mafic and ultramafic rocks in the Yukon-Tanana terrane. *In: Yukon Exploration and Geology 2011*, K.E. MacFarlane and P.J. Sack (eds.), Yukon Geological Survey, p. 115-127.

McCulloch, R., Lewis, R., Keill, D. and Shumaker, M., 2003. *Applied Gold Placer Exploration and Evaluation Techniques*. Montana Bureau of Mines and Geology, Special Publication 115, 267 p.

Queenstake Resources, 1987a. "Exploration Incentives Program Scope of Work for Exploration Drilling and Bulk Sample Excavation in the Maisy May Creek Placer Deposit". Placer assessment report 87-007, volume 1.

Queenstake Resources, 1987b. "Exploration Incentives Program Scope of Work for Exploration Drilling and Bulk Sample Excavation in the Maisy May Creek Placer Deposit". Placer assessment report 87-007, volume 2.

Wainwright, A.J., Simmons, A.T., Finnigan, C.S., Smith, T.R. and Carpenter, R.L., 2011. Geology of new gold discoveries in the Coffee Creek area, White Gold District, west-central Yukon. *In: Yukon Exploration and Geology 2010*, K.E. MacFarlane, L.H. Weston and C. Relf (eds.), Yukon Geological Survey, p. 233-247.

Yukon Geological Survey (YGS), 2016. Update of the Yukon Bedrock Geology Digital Map, release date January 2016.