

Staking Map

New Prospecting Lease On 1st Tier Right Limit Bench of Canyon Creek

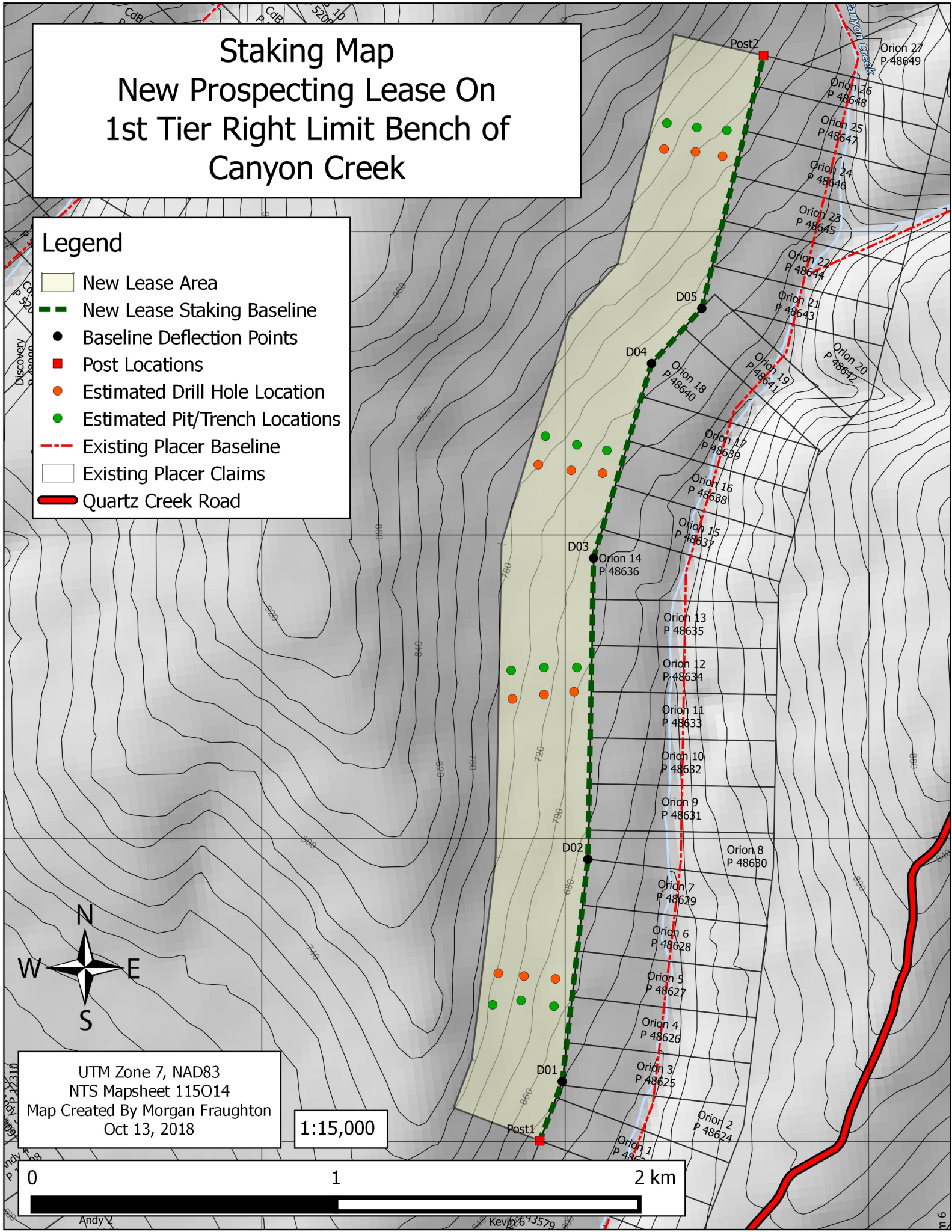
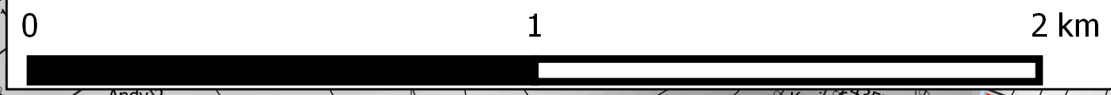
Legend

- New Lease Area
- New Lease Staking Baseline
- Baseline Deflection Points
- Post Locations
- Estimated Drill Hole Location
- Estimated Pit/Trench Locations
- Existing Placer Baseline
- Existing Placer Claims
- Quartz Creek Road



UTM Zone 7, NAD83
NTS Mapsheet 115014
Map Created By Morgan Fraughton
Oct 13, 2018

1:15,000



Andy

Kevin

m 6

Point_ID	UTM Zone_Datum	Easting	Northing
Post1	7_Nad83	595917	7080002
Post2	7_Nad83	596654	7083580
D05	7_Nad83	596451	7082746
D04	7_Nad83	596285	7082565
D03	7_Nad83	596094	7081923
D02	7_Nad83	596075	7080930
D01	7_Nad83	595991	7080197

Exploration/Assessment Plans for New Right Limit Tier 1 bench lease of Canyon Creek:

Exploration work will be performed by 0869809 B.C. Ltd. or by a company contracted by 086908 B.C. Ltd.

Exploration is planned to start in the early part of the 2019 mining season (mid April). This new lease and/or potential resulting claims are planned to be added to existing Placer Mining Land Use Permit number LP01249 if exploration results prove to be favorable. Currently, LP01249 covers the creek claims Orion 1-27 in Canyon Creek.

Exploration assessment work to the value of at least \$3,000 will be completed by tracked excavator and or tracked 8" or 6" auger drill. Exact model and make of equipment to be used will be determined after company personnel make a thorough examination of the ground on the new lease and are able to determine the best method of exploration to be used (Tracked auger drill or Tracked Excavator). Whatever method is used to complete exploration and assessment work it will conform to class 1 activities outlined by Operation Class Criteria Table in the Placer Mining Act.

Equipment will be walked over from the existing mine site covered by Land Use Permit LP01249. Fuel will not be stored on the new lease. Only enough fuel to keep the machinery running will be brought to the machinery when needed from approved fuel storage areas on LP01249.

Please see map for approximate drilling and or pit/trench excavation locations.