

YMEP Exploration Final Report for 2022 Duncan Creek Sonic Drilling Program

NTS Map 115G01

Owner: FTG Exploration Ltd.

Location: 63° 50' 19" N, 135° 27' 52" W

Mayo Mining District

Gustavus Range Area, Yukon Territory

**Edward Long
FTG Exploration Ltd.
01/31/2023**

Contents

Introduction	3
Location.....	3
Figure 1	4
Access.....	4
2022 Sonic Drilling	5
Picture 1: Sonic Drill on Duncan Creek	5
Figure 2: Claim Access.....	6
Figure 3: Duncan Creek Sonic Drill Hole Locations.	7
Table 1: Drilling Results.....	8
Sample Procedure.....	10
Conclusion and Recommendations	11
Expenditures	11
Statement of Qualifications	13
Appendix A: Drill Hole Notes.....	14
Appendix B: Drilling Invoice	28

Introduction

In the spring of 2022 May 1-5 , FTG Exploration Ltd. hired Northern Sonic out of Dawson City, Yukon to complete the 2022 Drill program on Duncan Creek in the Mayo District. 19 Sonic Drill holes were drilled to delineate highly economical placer ground from non- prospective placer ground across the considerable area of the property. Distinct stratigraphic units were encountered during drilling that often contained an order of magnitude more gold than overlying sedimentary units. Although mapped as shortly above the extent of McConnell ice that flowed up valley from the receiving Mayo River drainage, (and likely within the Reid limits), the sedimentology, stratigraphy, and thus potential placer deposits have been drastically altered by these glaciations. Drilling on Duncan Creek with a Sonic drill proved to work well to delineate the stratigraphy, but was very expensive.

Location

The FTG Exploration Ltd. Duncan Creek placer property, consisting of five contiguous miles (**Figure 1**), is located mainly on lower Duncan Creek on the western margin of the Gustavus Range (**Figure 2**). Duncan Creek is a right limit tributary of the southwest draining Mayo River. The well located property is a 45 minute drive from the community of Mayo and a 15 minute drive from the nearby community of Keno and can generally be accessed with 2WD vehicles 8 months of each year. Duncan Creek has been a serious if ephemeral target of placer production since the early 1900s, with >34,000 oz of placer gold previously reported recovered from the furthest downstream five miles of Duncan Creek alone (Taylor Family). Total recorded gold production from Duncan Creek may be in excess of 60,000 oz. (LeBarge, 1996) although the bulk of the ground remains under-explored and likely under developed. Although the lower five miles of the creek (immediately downstream of the applicant) and as well the junction area of upper Duncan and Lightning Creeks have been thoroughly mined, the middle five mile section holds vast potential for continued placer development. The proposed project area is located within an approximately 3000' long by 1000' wide swath of right limit bench of Duncan Creek, located on mainstem claims Star 9-Star 14.

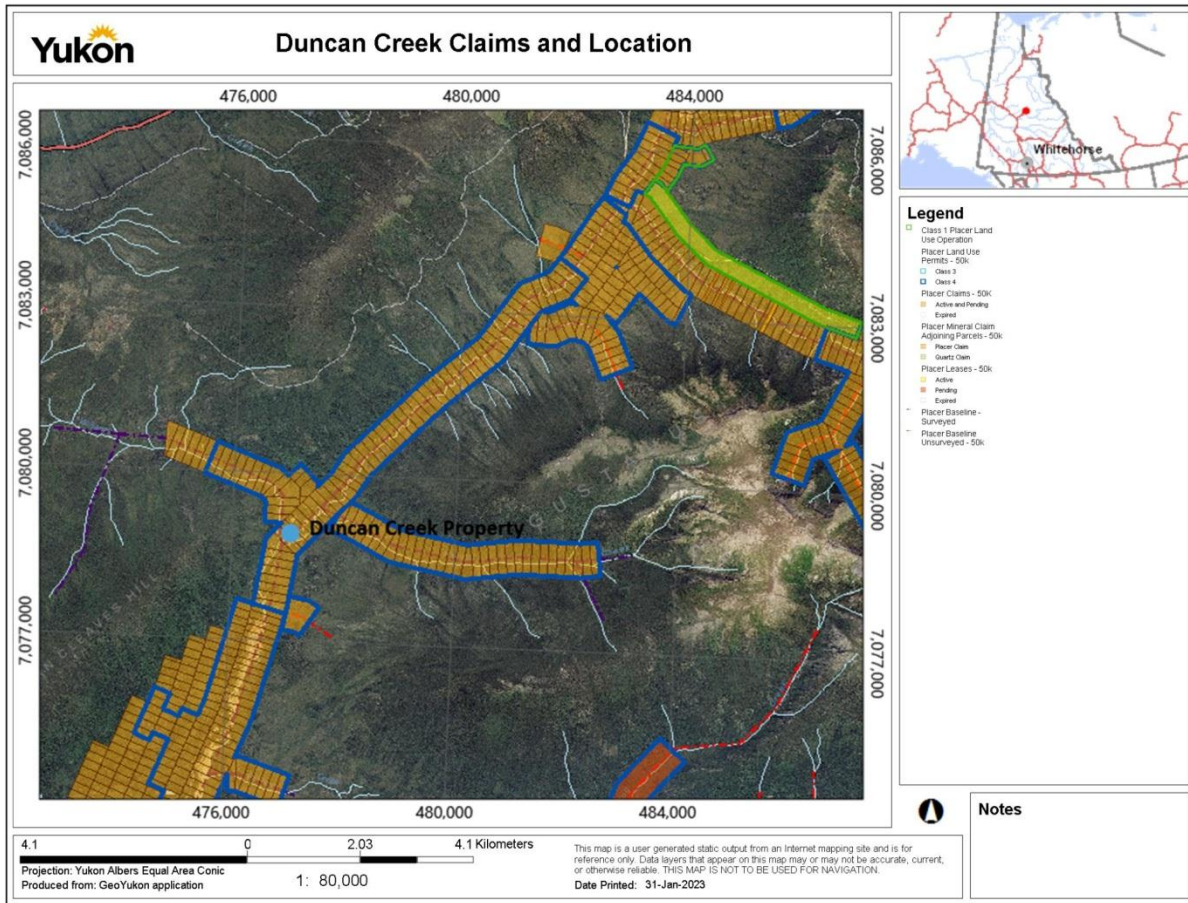


Figure 1: Location

Access

The Duncan Creek property can be accessed by following the Silver Trail north from Mayo for ~20 km, followed by a right on the Duncan Creek road for a further ~25 km. A final left hand turn at the 'Junction' with the Mayo Lake Road and another ~4km of driving toward Keno leads onto the property. The property can also be easily accessed by driving south from Keno for approximately 7 km in order to reach the upstream boundary of the property, in the vicinity of the left limit tributary, Forty Pup. The ease of access to site makes potential early and late season exploration, mining, and reclamation as well as procurement of parts, labour, fuel, and supplies much more feasible than the majority of other placer properties located in the Yukon hinterland.

2022 Sonic Drilling

The 2022 Drill program on the FTG Duncan Creek placer claims tested for economic placer potential within the outlined area in Figure 3. Thorough sonic drilling/testing and logging was completed from each drill hole. The 2022 Drill program at Duncan Creek included 3 personnel from FTG. Exploration (Riley Gibson, Ed Long, and Jared Mcguire). The drilling company hired by FTG Exploration was Northern Sonic Drilling and Consulting Inc. out of Dawson City, Yukon. Northern Sonic had 2 drillers and 1 sampler onsite at Duncan creek. The 2022 Drill program at Duncan creek took place May 1 to 5 2022. 19 Drill holes were completed on the Duncan creek property. Below in the table are the results and location of each drill hole. Figure 3 is a map showing the location of drill sites. Picture 1: Shows Sonic Drill on Duncan Creek.

Picture 1: Sonic Drill on Duncan Creek



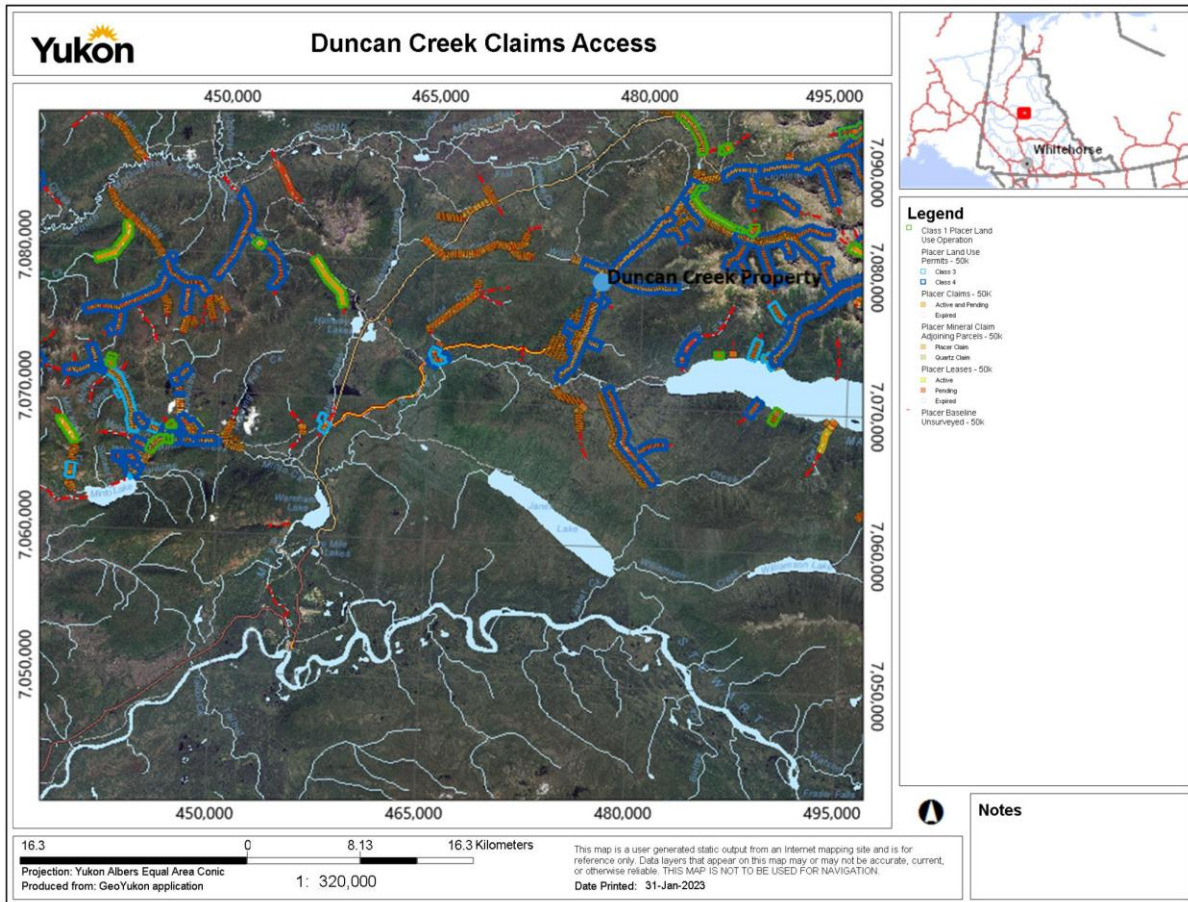


Figure 2: Claim Access

Figure 3: Duncan Creek Sonic Drill Hole Locations.

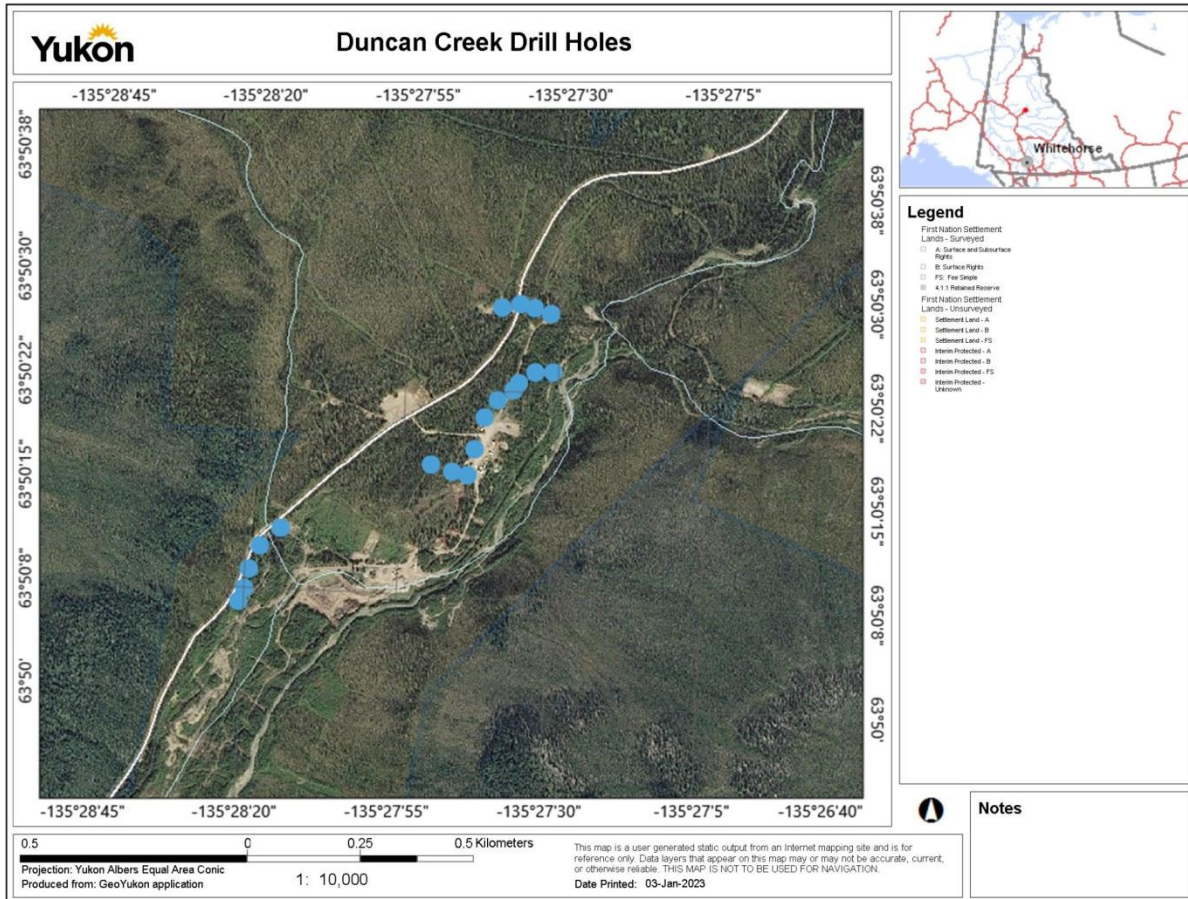


Table 1: Drilling Results

Drill Hole #	UTM(North)	UTM(West)	Depth of Hole(ft)	Overburden thickness(ft)	Sample Interval with Gold	Sample Description	Mg of Gold
SDH-1	7079253	0477402	53'	27'	27-33' 44-48'	Gravel Gravel on BR	2 10
SDH-2	7079240	0477372	35'	17'	17-27'	Gravel	10-15
SDH-3	7079222	0477358	73'	14'	14-20' 20-28' 28-35' 35-42' 58-68' 68-73'	Gravel Gravel Gravel Gravel Gravel Gravel on BR	1 10-12 1 1 15-20 15-20
SDH-4	7079205	0477324	76'	30'	30-43' 58-67' 67-76'	Gravel Gravel Gravel on BR	1 5 3-4
SDH-5	7079210	0477250	26'	14'	14-23'	Gravel	1-2
SDH-6	7079013	0477250	63'	47'	47-54' 54-59' 59-63'	Gravel Gravel Gravel on	5 10 1

						BR	
SDH-7	7079029	0477224	63'	N/A	N/A	No Gold	0
SDH-8	7079060	0477188	86'	N/A	N/A	No Gold	0
SDH-9	7079396	0477433	36'	21'	21-27' 27-34'	Gravel Gravel	3 2
SDH-10	7079374	0477390	36'	8'	8-27' 27-35'	Gravel Gravel	1 1
SDH-11	7079404	0477374	74'	55'	55-63' 63-70'	Gravel Gravel	1 1
SDH-12	7079397	0477323	76'	N/A	N/A	No Gold	0
SDH-13	7079453	0477330	76	11'	11-16'	Gravel	2
SDH-14	7078721	0476742	65'	25'	25-33' 33-43' 44-56' 57-65'	Gravel Gravel Gravel Gravel on BR	15- 20 15- 20 2 50
SDH-15	7078766	0476768	62'	16'	16-30' 36-48' 48-58'	Gravel Gravel Gravel	20 10- 12 15- 20

SDH-16	7078800	0476783	56'	16'	16-20' 20-30' 52-56'	Gravel Gravel Gravel	15 2 2
SDH-17	7078828	0476802	64'	17'	17-25' 56-60'	Gravel Gravel	3-4 2-4
SDH-18	7078889	0476846	80'	67'	67-74' 76-80	Gravel Gravel	3 7-8
SDH-19	7079158	0477300	78'	24'	24-32' 47-56' 57-76'	Gravel Gravel Gravel	1-2 2-5 1-2

Sample Procedure

All gravels and potential tills were sampled in search for gold bearing paleo channels. Each Sample would be bagged in 2 foot sections of gravel, not sampling any of the clay material with no cobble. Once the sample is spread out on drill sample" logging table", a brief description and depth of the sample is noted. Then the sample is run through a mini trommel with a "LE Trap" sluice to catch the fine gold in the sample or some cases no gold at all. From this point the gold is in a sample jar and an estimate using a Yukon Placer Gold Scale card, the samples weight is estimated in milligrams (Mg).

Conclusion and Recommendations

The 2022 Duncan creek drilling program outlined economic results from drill holes 1,2,3,6,14,15,16. The results from these drill holes were over 10Mg .Some drill holes did not recover any gold and some holes recovered enough to determine if it was economic or not. The best drill hole was SDH-14 interval 57-65' had over 50Mg of gold was collected from this sample. Unfortunately this drill hole was not mined due too high amounts of grey clay making it very complicated to work in. The drilling program helped delineate which gravel too mine and which gravels not too mine. The Sonic drill program told us where the gold was too deep too mine and the spots that were not economic at today's prices. The drill program identified shallow gravels that were favourable for mining with our smaller size operation and those areas were later mined by FTG Exploration. The 2022 Sonic drill program accomplished what we would expect from a drilling program and saved us from mining areas that were not economic. Sonic drilling proved to work well but was very expensive with the thick accumulation of overburden. More drilling is recommended to further define Duncan Creek placer claims.

Expenditures

Labour

Task	# of man days	Cost/man day	TOTAL
Tester/support (x3)	15	\$350	\$5,250

Field Expenses

Cost/day	# of man days	TOTAL
\$100	30	\$3000

Sonic Drilling Program

Drill Program	\$15,685.95/day	5d	\$78,429.75
---------------	-----------------	----	--------------------

Work Program Total: \$86,679.75

YMEP Final Report Preparation = Work Program Total (\$100,000) x 5% = \$4,000

2022 PROGRAM TOTAL: \$90,679.75

Statement of Qualifications

I, Edward Long, Prospector, certify that:

- 1) I reside at 106 Titanium Way, Whitehorse, Yukon, Y1A 0E8.
- 2) I am President, part owner of, and employed by All-In Exploration Solutions Inc. of Whitehorse, Yukon.
- 3) I graduated from NAIT Edmonton, Alberta in 2009 with a Diploma in Geological Technology
- 4) I have spent a great deal of time prospecting and sampling on and around Duncan Creek, Parent Creek, and Williams Creek.

Dated this 31 day of January 2023, at Whitehorse, Yukon.


E. Long (Prospector)

Appendix A: Drill Hole Notes

SDH-1: KIEF- lowest hole on the slope.

Location: 0477402; 7079253 ~elevation of 794

0-25'ish= clay overburden, often Grey to blue coloring, cohesive but not frozen

Sampling begins around 20', a few funny looking gravel sampled

Approximate depth of 37-40'

Drilled probably 3 bags of bedrock to include in sample. Bedrock drilled very easy, very biotite or graphite rich.

Drilled through large Boulder at bottom of first hole?

53-48' – more clay at top, mostly bedrock in sample – sample 1- 2 flyshits

48-44- shaley bedrock in middle, muddy gravel at bottom. Boulder at top.

Sample 2. One decent flat nuggy.

Maybe 10 mg. In vial.

Very pyrite rich.

42.5-38- busted up boulders on top half, busted shabby bedrock on bottom.

Sample 3

38-35- mix of gravel and clay contents. Two cobbles in upper 18 inches.

No visible gold

Sample 4

33-27: gravel. Mix of more clay rich vs sand rich. Rock up to half fist size. No bedrock slabs? Sample 5

Trace gold. One fly.

SDH-2: mid-slope on the Keif.

Location: 0477372; 7079240 elevation ~2610'

Clay 0-17 feet

17-27.5' feet gravel, thawed.

Didn't drill much bedrock, maybe a few bags, very competent bedrock compacted to previous hole.

Sample J: bottom 5' r bedrock

32.5-28.5- busted up shisty biotite mix.

Upper foot is gravel.

No visible gold

Sample k: 27-17'

Lower 2' is oxidized pebble gravel, gravel increase in clast size and clay contents going up.

Visible quartz pebbles

10-15 mg, 11 colours.

SDH3: on top of ramp down to Keif

Location: 0477358, 7079222 elevation 4 feet above start of previous hole

Moved further south by 5-6 meters than previous SDH3

0-20' of clay overburden

20-71' mostly gravel with a one major clay unit in the middle.

Gravel was generally very rich with pockets that were more sand rich

Some of clay rich gravel in the middle may have been frozen

Nice looking gravel immediately above bedrock at 71'.

Sample A: 73-68

One foot of bedrock, bottom at 73-one more clay rich zone near 67

-Included in sample is 1.5' of slough at top of sample.

Pretty oxidized, Much more quartz pebbles.

One nice small flake and 10 colours bigger than flyshits, maybe 15-20mg. Mostly in vial.

Sample B: 68-58'

clayey cobble gravel

Lots of small gravel rocks and small cobbles.

Clay bands and quartz pebbles.

Chocolate wash colour

Many small nice colours and prices, similar to lower sample. 15-20 mg in vial

Sample C: 57-51' has one foot slough from previous sample.

Clayey, much the same as previous sample.

2-3 mg, much less than samples A and B

Sample D: 51-42.5- 3 feet slough included

Has most clayey bands yet. Probably till at top.

Sample E: 42-35.5. Bottom is likely a till. Maybe 2 feet.

Covered by sandiest gravel yet, with cobbles. Abrupt contact at 40'.

Not many quartz pebbles.

3 colours, maybe 1mg

Sample F: 35-28.5'- lowest 2 feet very sandy.

Upper is clay rich gravel with rocks

Not many quartz pebbles

One flyshit after processing

Sample G: 28-20'- lowest two feet is clayey and wet.

Above is sandy with numerous cobbles. Prob some ground up boulders as well?

Bout 12 small colours, lots magnetite and even a few small hematites.

Maybe 2-4 mg

Sample H: 19.5-14'.

More sandy near top, rest is a drier more clay rich gravel.

One flyshit

Sample I: 13.5-7'

Sandy matrix gravel, some cobbles

SDH4 DEPTH TO 76', ONLY COUPLE INCHES of bedrock included.

0477324;7079205

Sample q- 76-67.5'

3' bedrock included, soft.

Middle 3.5' more wet clay, Upper 8" more till looking. Maybe a little more oxidized on bottom third?

Maybe 3-4 mg

Sample R- 67-58.5'

Bottom 18" r stuff.

Above is rocky pebble cobble gravel.

Lots of cobbles

Most gold of hole. 10 small colours Maybe 5 mg

Sample S- 58-51.5'

Clayey gravel, one drier more sandy section around 53.

Rocky- pebble cobble gravel

No visible gold

Sample T- 51-43.5'

Bottom 3' more clay.

Middle 2'tight sandy clay

A bit more sandy up top

No Visible gold

Sample U: 43-30'

Driest and least clayey so far.

More of pebble gravel than below.

3 flyshits, less than 1mg I think

SDH5- STEP OUT ON CANYON

0477351;7079210

26-23.5

Bottom 4 ' are soft bedrock.

Sample V. No visible gold after panning

Sample W: 23-14'

1' bedrock mixed in.

Sandy pebble gravel, one good sized round cobble

One 2mg colour

SDH6- 0477250;7079013

63-59.5'

Sample L- one small flyspeck after panning

Sample is pulverized schisty bedrock, has one 6" clayey zone.

No sample kept after panning

Sample M- 59-54'

Minus 1.5' slough

Upper 2' pebbles clay gravel, bottom 2 feet clayey, middle is more sandy?

Forgot pics...

6 colors, maybe 10 mg

Sample N: 54-47'

Clayey gravel at bottom 3.5', hard clay for 3, probably a little chunk of till, very hard?, Upper 1' gravel

3 colours, maybe 5mg, in vial

Sample O: 47-41.5'

Clayey gravel, approx. 43-44 is till diamict thing.

No visible gold after panning

Sample P: 41-32.5

Bottom 3.5 feet more clayey, has clumps,

More sandy in middle feet with clay pods.

No visible gold after panning.

SDH7- BEHIND MEL CABIN

0477224;7079029

Looks like a dark till on bedrock.? Not really a gravel, too silty and clayey, way more matrix, but still rounded rocks up to fist size. Has some sand too. A diamict, varying cohesiveness.

58.5-51.5' sample AH.

No visible gold, tons of pyrite chunks

Sample AI- 51-44.5

LOOKS LIKE more dark till. Silty and sandy with more clayey sections.

No visible gold, loaded with pyrite.

Sample AJ- 44-36.5'

Sandy till with more frozen sandy parts.

Lots of ay peds, some cobbles.9374

SDH8- DEEP HOLE WITH gravel at bottom, 86 feet. Not to bedrock?

0477188;7079060

SAMPLE AD: 86-76.5

MAYBE 2' of slough at top, maybe not...

Gravel at bottom, has large core of rock at 74 ish.

Wet sandy to more clay rich gravel

No visible gold

SAMPLE AE- 76-68.5'

DARK silty pebble gravel with a few cobbles

74-72 appear to sand lense

No visible gold

Loaded with pyrite

Sample AF:

SILTY DARK COLOUR pebble GRAVEL? Maybe loose till?

A few cobbles.

No visible gold. LOAD3D WITH large pyrite chunks.

Sample AG: 61-54.5'

DARK silty clay till or gravel. Top is more wet. Lots pebbles, everything dirty!

No visible gold

SDH9- 7079396; 0477433

36' total depth.

Sample AA- 36-34- ground up bedrock

No visible gold

Sample AB- 34-27.5'

MORE clay at bottom, silty at top

2 feet of hard sandy clay at 33-30

Top has a few cobbles in it.

Trace amounts, 2 flyspecks...

Sample AC- 27-21- gravel, silty and sandy like below.

Above was clay/till.

Trace, 3 flyshits

SDH10- BY MELS UPPER HOLES, furthest east.

047739;7079374

Sample BD: 35-27.5'

BEDROCK FOR 2'

Till above, including tight or frozen tubes? More sandy for last foot.

One flyshit

Sample BE: 27-8' Missing a bag? Long interval. Very sandy with silt Pebble gravel?

4 Trace pieces, less than 1mg

SDH11- 0477374;7079404

DEEP HOLE TO 74.5. From in where we thought throat was at head of valley.

SAMPLE BA- 74-71'

Ground up soft bedrock.

No visible gold

Sample BB: 70.5-63.5.

CLAYEY gravel?Pebble gravel

4 small colours, maybe 1mg.

Sample BC: 63-55'

Clayey. Till kinda diamict. A few cobbles, lots of clay pods.

2 flyshits

SDH12- DOWN TO 77 FEET, NO bedrock.

0477323;7079397

Sample BF- 77-70.5'

Sandy silty pebble gravel. Thaw.

More rocks than previous gravel, still a matrix gravel, Grey brown colour.

One 6" band of sticky clay and sand with a few rocks in it.

No visible gold , lots of pyrite.

SAMPLE BG- 70-63.5'

clayey pebble gravel.

Lots of rounded rocks tho and including probably 15 cobbles. Grey colour, dogs breakfast.

Most rocks in rinse yet?

Has chunks of clay around 60-61'

No visible gold, lots pyrite

Sample BH 63-55'

Bottom 5' same as below- clay gravel

Upper 3' sand rich with sandy balls

No visible gold

SDH13

0477330;7079453

SAMPLE BI- 16-11'

Nice looking sandy cobble gravel.

2 flyshits

ALL CLAY BENEATH

SDH14: LOWEST ADJACENT TO WILLIAMS Ck.

0476742;7078721

Sample BJ: mostly bedrock **65-57'**

Wetter like it is not competent bedrock at 59

Rounded pebbles above 58'

Less than foot of gravel

Best gold yet- ~50mg

Sample BK: 56.5-44 clayey brown gravel, some cobbles, some clay balls, last 2 feet more sand rich.

Might be missing a few feet in middle?

2 mg, 5 colours.

Sample BL- 43-33.5.

Clayey sandy balls on bottom 2', gravel above.

One more clay ball at 35'

15-20 mg, one nice flake and 2 colours

SAMPLE BM: 33-25, PLUS ONE FOOT OF 16. MISSING SOME in between.

Sandy pebble gravel with a clay hunk around 27'. Has some cobbles.

20 fine colours

SDH15: 0476768;7078766

second Williams hole

SAMPLE BN: bedrock- 62-58.

62-59 is ground up chloritic schist bedrock.

59-58 ish unconsolidated bedrock and clay with a few rounded pebbles.

No visible gold

Sample BO- 58-48.5

Sandy pebble gravel with several 4" or larger cobbles. The gravel looks pretty nice

Lots of larger calibre sand

A few clayey bands at 56 & 50

15-20mg, 2 nice flakes.

SAMPLE BP- 48-36'

Same as below. Pebble gravel with cobbles. Brown.

Lots coarse sand and grit, a few cobbles and minor clay chunks.

Lots black sand

10 small colours, 2 small flakes

SAMPLE BQ: 30-16'

Pro recovery issues. Nice looking almost bony sandy gravel.

MORE cobble rich at bottom, clayey sand wedge at 15'

20-25 flyshits

SDH16-

0476783;7078800

SAMPLE BR- 56-52'

Bedrock sample with almost 1 foot of what is on bedrock

Clayey gravel material above bedrock with small rounded cobbles

2 Mg smaller colours. 5-6

SAMPLE BS- 52-41'

Sandy pebble gravel, lots grit. clay pods at 50ish and 43.

Lots rocks.

No visible gold

SAMPLE BT

Mud between 43-30 so no sample there.

30-20'

Sandy pebble cobble gravel

7 or 8 cobbles

7-8 colours, maybe 2mg

SAMPLE BU: 20-16 – WET cobble gravel.

Several cobbles.

15 colours, mostly fine

SDH17: 0476802;7078828

drilled 64, bedrock at 60

Sample BV: 64-60'

Bedrock up to contact

Chloritic schisty dust

No visible gold

SAMPLE BW

60-56.5

Mix of bedrock at bottom foot, clayey cobble gravel above, lots of grit as well

7-8 fine colours, maybe 2mg

SAMPLE BY 56.5-56.

Rusty small orange pebble gravel. Was probably more but not recovered. May have seen

Had a clay wedge of maybe 6"

Big gap of muck until next sample

No visible gold

BZ Sample- 25-17

Muddy pebble-cobble gravel.

Lots of grit and pebbles, more clayey around 20'

Maybe 25-30 small colours

3-4 mg

SDH18- 0476846;7078889

Sample CA:

80-76'

6" ground up b3drock at bottom.

2' sandy cobble gravel on bedrock

Upper 1.5' is clayey till with plentiful rounded rocks.

Decent Sample, maybe 7-8 mg, 16 colours mostly fine colours with one decent comma sized flake.

SAMPLE CB:

74-67'

SANDY PEBBLE TO COBBLE GRAVEL WITH MORE SILT THAN CLAY.

LOTS ROUNDED ROCK.

3 fine colours, 3 flyshits.

SDH19: 7079158; 0477300

TWIN TO WATER WELL. Final hole

Sample CC: 78-76'

Bedrock for most of sample, sample includes contact but not gravel above.

No visible gold

Sample CD: 76-66.5

Sandy gravel bottom foot, clayey cobble gravel above, lots of rocks.

Clayey rocky till Upper 2'

3 small colours, less than 1mg

Sample CE:

66-57'

Clayey cobble gravel, clast supported possibly

Lots of rounded rocks

4 small colours, less than 1mg

SAMPLE CF:

56-47'

Sandy cobble gravel with some clay and SILT. ABUNDANT rocks and half dozen cobbles at least.

8 fine colours, 1 larger small colour, maybe 2mg

Sample CG:

47-39.5'

SANDY PEBBLE COBBLE GRAVEL,

Fairly coarse sand with some silt

4- good cobbles

No VG

Sample CH:

Pebble gravel, more clay than previous same, less cobbles. Still a more sandy gravel, somewhat coarse sand

A few small clay balls

No visible gold

SAMPLE CI: last same on water hole

32-24'

Sandy clayey gravel, more sand at top one foot band of sandy dark grey clay around 29'

1-2 mg, 1 colour, 2 flys

Appendix B: Drilling Invoice

Northern Sonic Drilling and Consulting Inc
P.O. Box 225
Whitehorse YT Y1A 5X9
+1 9073020261
Liam@northernsonic.com
GST/HST Registration No.: 763698677



INVOICE

BILL TO
Ed Long
FTG Exploration Ltd

INVOICE # 1083
DATE 07/05/2022
DUE DATE 07/05/2022
TERMS Due on receipt

COMMENTS Duncan Creek
JOB NO. 22-0065
PREPARED BY LRF

PRODUCT / SERVICE	DESCRIPTION	QTY.	UNIT COST	TOTAL
Mobilization	Mobilization and demobilization of full-size rig, support equipment, and crew	1	4,215.00	4,215.00
Daily rate	Daily rate for full-size sonic drilling rig, support vehicle, crew truck (estimated at)	4	10,000.00	40,000.00
Footage fee for 6" tooling	Additional drilling fee for equipment wear and tear. Charged per foot drilled.	1,189	20.00	23,780.00
Core shack (PLACER)	Use of mobile core shack without supplied staff	5	1,200.00	6,000.00
Travel to site	Travel time from accommodations to site or as additional time required onsite due to drill location	4	175.00	700.00

Wire Information:

Northern Sonic Drilling and Consulting Inc
Account # 3313115
Branch Transit # 00080
Financial Institution # 010
CANADIAN IMPERIAL BANK OF COMMERCE
110 Main St.
Whitehorse, YT Y1A 2A8

SUBTOTAL 74,695.00
GST @ 5% 3,734.75
TOTAL 78,429.75
BALANCE DUE

CAD 78,429.75

Checks also accepted to:

Northern Sonic Drilling and Consulting Inc
P.O. Box 225
Whitehorse YT
Y1A 5X9

