

**YMEP Target Evaluation Report
2022 Soil and Rock Sampling Survey
on the
OGI PROPERTY**

***Owned by Fox Exploration Ltd.
Operated by Sitka Gold Corp.***

Claim	Grant No.	Claim	Grant No.
OGI 36	YD145136	OGI 107	YD145207
OGI 38	YD145138	OGI 109	YD145209
OGI 40	YD145140	OGI 111	YD145211
OGI 42	YD145142	OGI 113	YD145213
OGI 44	YD145144	OGI 115	YD145215
OGI 48	YD145146	OGI 117	YD145217
OGI 50	YD145148	OGI 119	YD145219
OGI 52	YD145150	OGI 121-164	YD145221-YD145264
OGI 54	YD145152	OGI 171	YD145271
OGI 56	YD145154	OGI 173	YD145273
OGI 60	YD145156	OGI 175	YD145275
OGI 69-94	YD145169-YD145194	OGI 177	YD145277
OGI 96	YD145196	OGI 179	YD145279
OGI 103	YD145203	OGI 181	YD145281
OGI 105	YD145205	OGI 183	YD145283

**Claim Sheet No 116B/01
UTM Zone 7 – NAD 83: 627,500 E; 7,115,800 N
Latitude 64° 8' 36" N and Longitude 138° 23' 50" W
Dawson Mining District
Yukon, Canada**

Work Performed during the period September 5th to September 15th, 2022

**YMEP Grant # 22-055
Report by
John Greg Dawson, M.Sc., P.Geo.
January 22, 2023**

Table of Contents

SUMMARY	4
INTRODUCTION	5
PROJECT LOCATION	6
PROJECT DESCRIPTION	7
ACCESS	9
PHYSIOGRAPHY	9
REGIONAL GEOLOGY	10
PROPERTY GEOLOGY	12
PROJECT HISTORY	14
EXPLORATION TARGETS	24
INTRUSION RELATED GOLD SYSTEM	24
SEDEX DEPOSIT	24
2022 EXPLORATION PROGRAM	24
SOIL SAMPLING RESULTS	27
PROSPECTING AND ROCK SAMPLING RESULTS.....	27
CONCLUSIONS AND RECOMMENDATIONS.	29
STATEMENT OF EXPENDITURES	29
STATEMENT OF QUALIFICATIONS	30
REFERENCES CITED	31

List of Figures

Figure 1 OGI Project Location	7
Figure 2 OGI Project Claim Map	8
Figure 3 OGI Camp and Terrain	9
Figure 4 Regional Geology OGI Property.....	11
Figure 5 OGI Property Locall Geology	13
Figure 6: Fox 2011 to 2013 Historic Exploration Results.....	14
Figure 7 OGI Project Historic Soil	16
Figure 8 OGI Project Historic Zn in Soil	17
Figure 9: 2013 Work	18
Figure 10 OGI Project VLF Conductor Lines with Zn in Soil.....	19
Figure 11 OGI Project 2020 RAB Drilling & 5 m Drone Survey Contours	21
Figure 12 OGI Project 2020 RAB Drilling & 5 m Drone Survey Contours	22
Figure 13: 2022 Gravity Survey Anomalies.....	23
Figure 14: 2022 Rock and Soil Sample Locations	26
Figure 15: 2022 Gold in Soil	28

List of Tables

Table 1 Gold in Soil Descriptive Statistics.....	27
Table 2 Statement of Expenditures.....	29

APPENDICES

Appendix I OGI Property Claim List

Appendix II Soil and Rock Sample Results and Descriptions

SUMMARY

The OGI property (the “Property”) is situated in the Dawson Mining District and consists of 99 contiguous quartz claims registered in the name of Fox Exploration Ltd. (“Fox”). Sitka Gold Corp. (“Sitka Gold”) has acquired an option to earn a 100% interest in the Property.

The area of the OGI Property was originally staked as a gold prospect in 1989 and various exploration programs were carried out through 2011. In 2012 Fox extended a soil grid to the south of the main gold target area and encountered a large Zn-Ag soil anomaly. This discovery has led to the current program, where the target is a stratabound, sedimentary exhalative (SedEx) base and precious metal deposit such as Howards Pass and possibly also the Nick occurrence, in Road River stratigraphy within the Selwyn Basin. The OGI soil anomaly is strongly anomalous in Zn (2,000 to +10,000 ppm), Ag (10 ppm to +50 ppm) and enriched in several other elements including Ni, As, Mo, Ba, P and V.

The survey identified 3 gravity high anomalies and 2 gravity low anomalies that justify further investigation by way of a more detailed compilation of geological and geochemical data, ground truthing and more detailed gravity surveying.

The 2022 exploration program on the OGI property consisted of the collection of 606 soil samples and 2 rock samples. A total 348 samples were collected on a 100 m by 50 m grid to infill an area between historic samples that had not been sampled while 258 samples were collected at a 50 by 25 m spacing around a historic high grade soil sample which returned 3.7 g/t Au. The 2 rock samples were collected from a hand dug pit at the site of the 3.7 g/t Au sample. The work was completed by GroundTruth Exploration of Dawson City between September 5 and September 15, 2022. The total cost of the 2022 program was \$67,401.53.

None of soil or rock sampling indicated the presence of economic gold mineralization. The historically mapped location of the grab sample of monzonite containing 895 ppb Au was in an overburden covered valley bottom with no obvious signs of outcrop, float or subcrop, so the provenance of this sample still remains unknown.

The 2022 exploration program did not demonstrate that economically significant gold mineralization occurs in the area investigated. This program did not, however, follow up on the recommendations of the 2021 gravity survey work which was focused on the zinc – silver potential of the southern part of the property. That survey identified 3 gravity high anomalies and 2 gravity low anomalies that justify further investigation by way of a more detailed compilation of geological and geochemical data, ground truthing and more detailed gravity surveying.

INTRODUCTION

The OGI Property is located approximately 51 kilometres east of Dawson City, Yukon and 4 kilometres northwest of Golden Predator's Brewery Creek Mine (Figure 1). The Property is located on NTS map sheet 116B01 and centered at UTM NAD, 83 Zone 7: 627,500 E; 7,115,800 N or at latitude 64° 8' 36" N and longitude 138° 23' 50" W and consists of 99 contiguous quartz claims registered to FoxExploration Ltd. Access to within 8 kilometres of the Property is by paved road from Whitehorse or Dawson to the Dempster highway and then by good all-season gravel road up the Dempster highway for 25 kilometres. A helicopter is then required for the remaining 8 kilometres east to the Property.

The area of the OGI Property was originally staked as a gold prospect in 1989 by Tombstone Explorations Company Ltd., who carried out limited prospecting and geochemical silt sampling in 1990 (Minfile 116B 165).

In 2011, Fox Exploration Ltd. (Fox) staked the OGI claims to cover prospective gold anomalies generated from an historic stream sediment sampling program and was focused on an intrusion related gold target. In 2012 Fox conducted a program of soil sampling geochemical on the property that returned a single sample of 3.7 g/t Au in the vicinity of the Ridgeway Minfile occurrence (895 ppb Au, 1,065 ppm As, 10 ppm Sb and 3,650 ppm Hg in quartz monzonite float) and identified an area of strongly anomalous Zn and Ag values as well as other metals in the southern part of the property. Additional exploration conducted on the Property during in 2013 to 2017 defined a Zn-Ag soil geochemical anomaly approximately 1,000 m in length and 500 m wide in this area. The anomaly is strongly anomalous in Zn (2,000 to +10,000 ppm), Ag (10 ppm to +50 ppm) and enriched in a number of other metals and remains open to the south.

In 2020, Sitka Gold Corp optioned the property and completed a 12.2 square kilometer drone survey that produced a detailed topographic map, and a 4 hole, 103.6 m Rotary Air Blast (RAB) drilling program. Holes OGI RAB 20-001, 003 and 004 all intersected a black fine grained argillaceous unit that is moderately to strongly anomalous in zinc and silver. The strongest mineralization was encountered in OGI-RAB-20-004, which averaged 1,963 ppm Zn and 5.7 ppm Ag over its entire 30.5 m length. The highest results from the hole were 1.5 m of 5,430 Zn at 13.7 m and 1.5 m of 11.6 g/t Ag at 3.0 m.

In 2021 Sitka Gold Corp completed a gravity survey over the zinc – silver anomaly on the southern part of the property. The survey identified 3 gravity high anomalies and 2 gravity low anomalies that justify further investigation by way of a more detailed compilation of geological and geochemical data, ground truthing and more detailed gravity surveying.

The targets at the OGI property include both an intrusion related gold system such as Brewery Creek and a stratabound, sedimentary exhalative (SedEx) base and precious metal deposit such as Howards Pass and possibly also the Nick occurrence, in Road River stratigraphy within the Selwyn Basin. The Road River Formation that underlies the Property is known throughout the Selwyn Basin to host SedEx

style base and precious metal mineralization. The geochemical signature at OGI (Zn-Ag-Mo-Ni-As-Sb-V-P; Pt, Pd and Se were not analyzed) has similarities to Howards Pass (Zn-Pb-Ag-Cd-Mo-Co-Ni-Ba-V-P) and Nick (Ni-Pt-Pd-Ag-Zn-Mo-As-Ba-Se). This metal association suggests that the source of the OGI soil anomaly is a SedEx style target and not simply a Zn-rich seep or ferricrete associated with a fault zone or a small intrusive (G. Carlson, 2017).

The source of the 895 ppb Au sample of quartz monzonite and the 3,700 ppb Au soil result at the Ridgeway showing have remained unexplained. To investigate these targets, the 2022 exploration program on the OGI property consisted of the collection of 606 soil samples and 2 rock samples. A total 348 samples were collected on a 100 m by 50 m grid to infill an area between historic samples that had not been sampled while 258 samples were collected at a 50 by 25 m spacing around a historic high grade soil sample which returned 3.7 g/t Au. The 2 rock samples were collected from a hand dug pit at the site of the 3.7 g/t Au sample. The work was completed by GroundTruth Exploration of Dawson City between September 5 and September 15, 2022. The total cost of the 2022 program was \$67,341.53

PROJECT LOCATION

The OGI Property is located approximately 51 kilometres east of Dawson City, Yukon and 4 kilometres northwest of Golden Predator's Brewery Creek Mine. The Property is located on NTS map sheet 116B01 and centered at UTM NAD, 83 Zone 7: 627,500 E; 7,115,800 N or at latitude 64° 8' 36" N and longitude 138° 23' 50" W. The OGI camp is located on OGI claim # 128 at UTM NAD 83 Zone 7: 628,000E, 7, 116,000N (Figure 1).

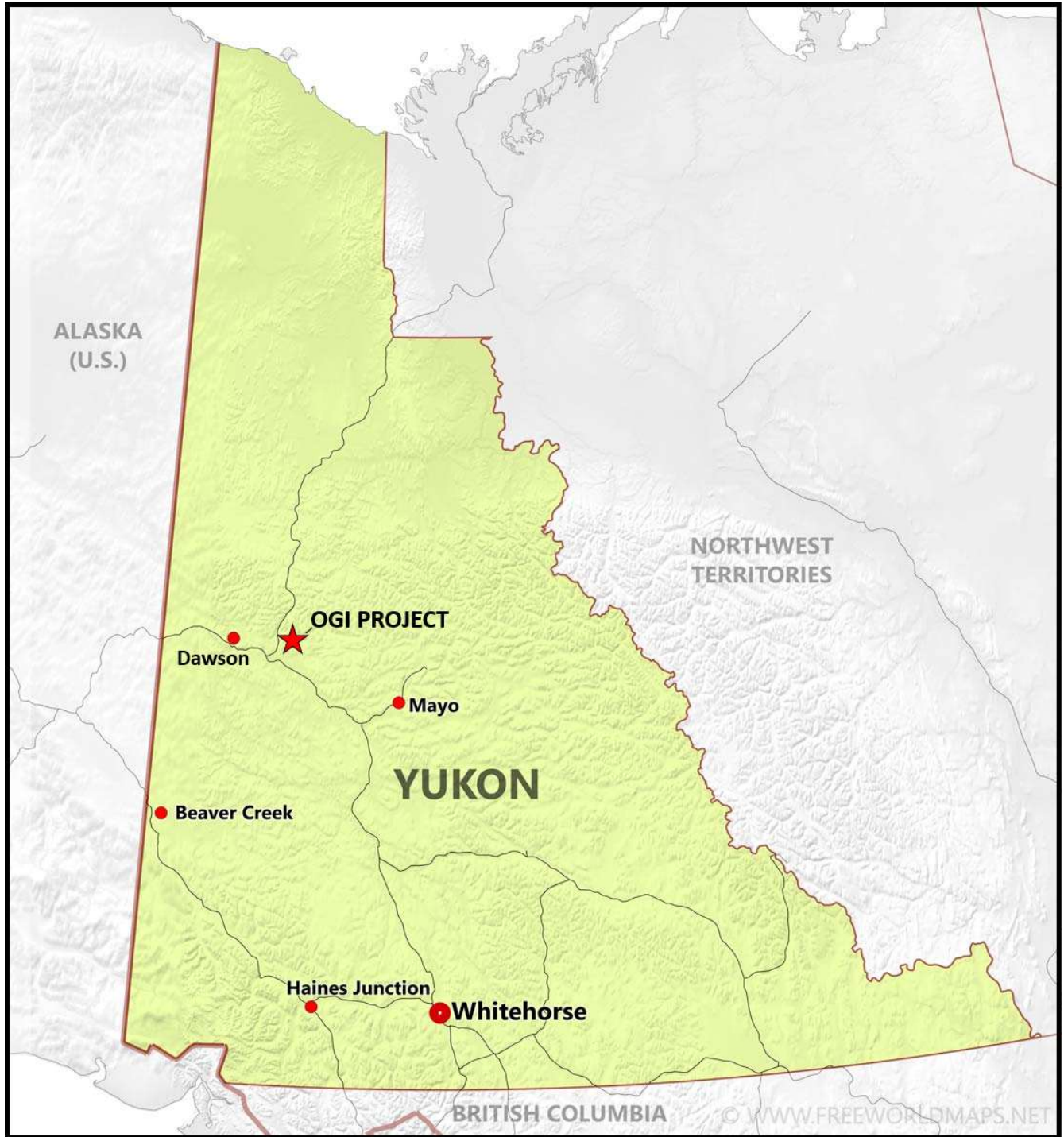


Figure 1 OGI Project Location

PROJECT DESCRIPTION

The OGI Property is situated in the Dawson Mining District and consists of 99 contiguous quartz claims, listed in Appendix I and shown in Figure 2. The claims are registered in the name of Fox Exploration Ltd.

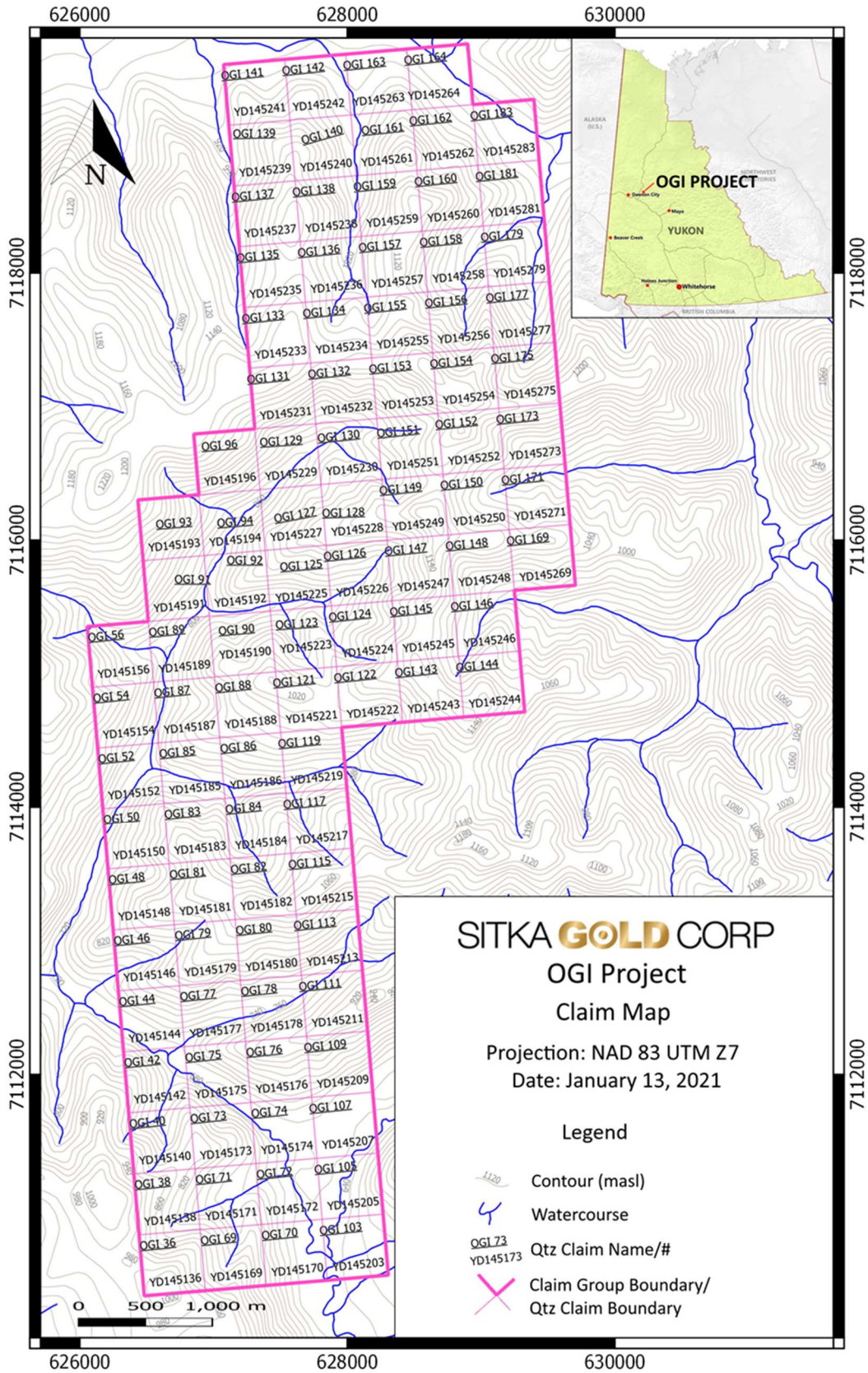


Figure 2 OGI Project Claim Map

ACCESS

Access to within 8 kilometres of the Property is by paved road from Whitehorse or Dawson to the Dempster highway and then by good all-season gravel road up the Dempster highway for 25 kilometres. A helicopter is then required for the remaining 8 kilometres east to the Property. The OGI camp area is located on Claim # 128 at UTM Coordinates NAD83, Zone 7: 7,116,000N: 628,000E.

PHYSIOGRAPHY

The OGI property (the “Property”) is located in the Ogilvie Mountains. The Property is characterized by steep to moderate relief and is generally below 1200 metres in elevation. The Property is covered by black spruce, pine, poplar, birch and alder trees with abundant willows and buck brush at lower elevations. Outcrop on the Property is sparse and exists primarily along ridges and steeper areas of relief and in the creeks (Figure 3).

The climate of the Property area is generally dry during the summer months with most of the limited precipitation occurring in July and August. Temperatures range from -45°C in the winter months to 30°C in the summer. Snow accumulation begins generally in late September and is mostly melted by mid-May. The area was subject to partial glaciation and the surrounding area is known to have accumulations of loess within the overburden profile.



Figure 3 OGI Camp and Terrain

REGIONAL GEOLOGY

The OGI project lies within Selwyn Basin rocks just to the east of the Robert Service Thrust, which bounds the basin on the west. This basin is characterized by deep water, off-shelf sedimentary strata that are transitional eastward and northward into shelf carbonate and clastic sedimentary rocks of the Mackenzie Platform. To the southwest, the Selwyn Basin is separated from volcanic stratigraphy of the exotic Yukon Tanana Terrane by the Tintina Fault Zone.

The Property is underlain by rocks of the Road River Formation (pale blue in Figure 4) with underlying Rabbit Kettle Formation (pale grey) and Hyland Group (tan) to the immediate west.

The basal unit of Selwyn Basin consists of clastic rocks of the Proterozoic to lower Cambrian Hyland Group. These rocks include green-grey phyllite, sandstone and less common conglomerate and calcareous rocks.

The Cambro-Ordovician Rabbit Kettle Formation unconformably overlies older lithologies and forms a prominent laterally continuous white weathering carbonate marker horizon. The limestone is primarily a platy thin to medium marble with lesser dolomitic phyllite deposited in a transitional setting.

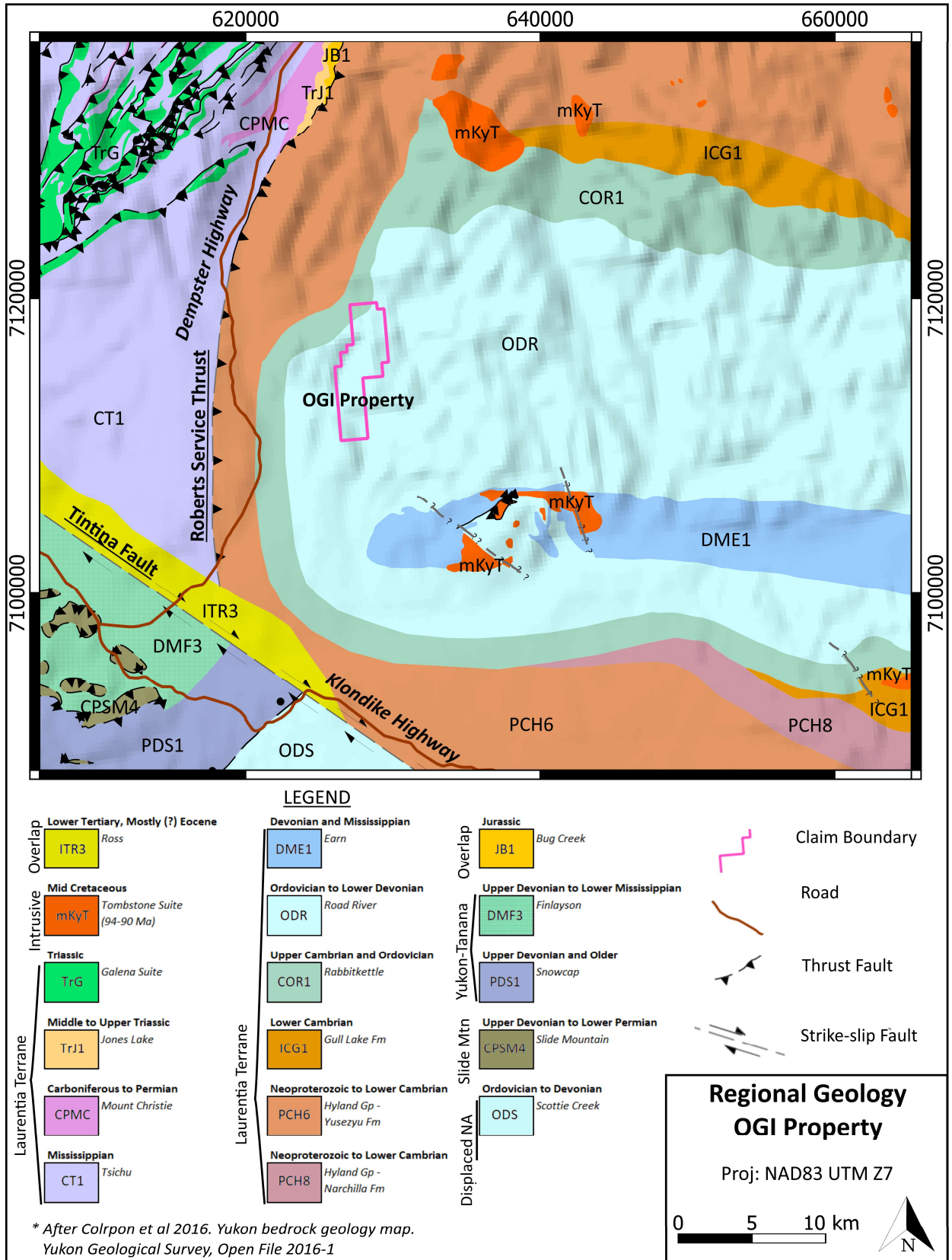


Figure 4 Regional Geology OGI Property

Overlying the Rabbit Kettle Formation is the Silurian to Ordovician Road River Group. The basal Duo Lake Formation comprises gray to black to brown, brown weathering, phyllitic shale, cherty shale, chert and rare quartz augen phyllite. The overlying Steel Formation consists of limy mudstone, phyllitic mudstone and siltstone with lesser fine grained calcareous quartz sandstone and thin sandy limestone. Road River Formation is host to numerous Zn-Pb-Ag occurrences, the most well-known of which is Howards Pass, and also unique nickeliferous stratabound mineralization, the Nick occurrence (Minfile 106D 092).

Unconformably overlying the Road River Formation is the Devono-Mississippian Earn group consisting mostly dark grey to black shale with subordinate and variable amounts of chert, siltstone, sandstone, limestone, bedded barite, chlorite muscovite phyllite and chert pebble conglomerate. This unit is exposed to the southeast of the Property, just off the area shown in Figure 4. The Earn Group strata are also host to numerous Zn-Pb-Ag occurrences throughout Selwyn Basin, the most well-known of which are the Tom and Jason deposits in the Macmillan Pass area.

The Selwyn Basin strata have been intruded by felsic to intermediate Cretaceous stocks and small plutons of the Tombstone and McQuesten Suites, forming an arcuate band that spans the Yukon from north of Dawson to the NWT border. Gold mineralization of the Tintina Gold Belt is associated with these intrusive rocks.

PROPERTY GEOLOGY

There has been no comprehensive geological mapping on the OGI Property and outcrop is scarce. During the 2017 field program, exposures on the ridge top along the northern boundary of the Zn-Ag soil anomaly were mapped. The main lithology is light to medium grey chert to siliceous argillite belonging to the Road River Formation (Figure 5). The chert often shows an indistinct brecciated texture, probably tectonic in origin, and it is often cut by thin, irregular quartz veinlets. It ranges from massive to well bedded on a scale of 3 to 5 cm thick beds. Outcrops are typically quite rubbly.

An aeromagnetic-radiometric anomaly associated with the Ridgeway prospect in the northern part of the Property is likely associated with a buried Tombstone intrusion.

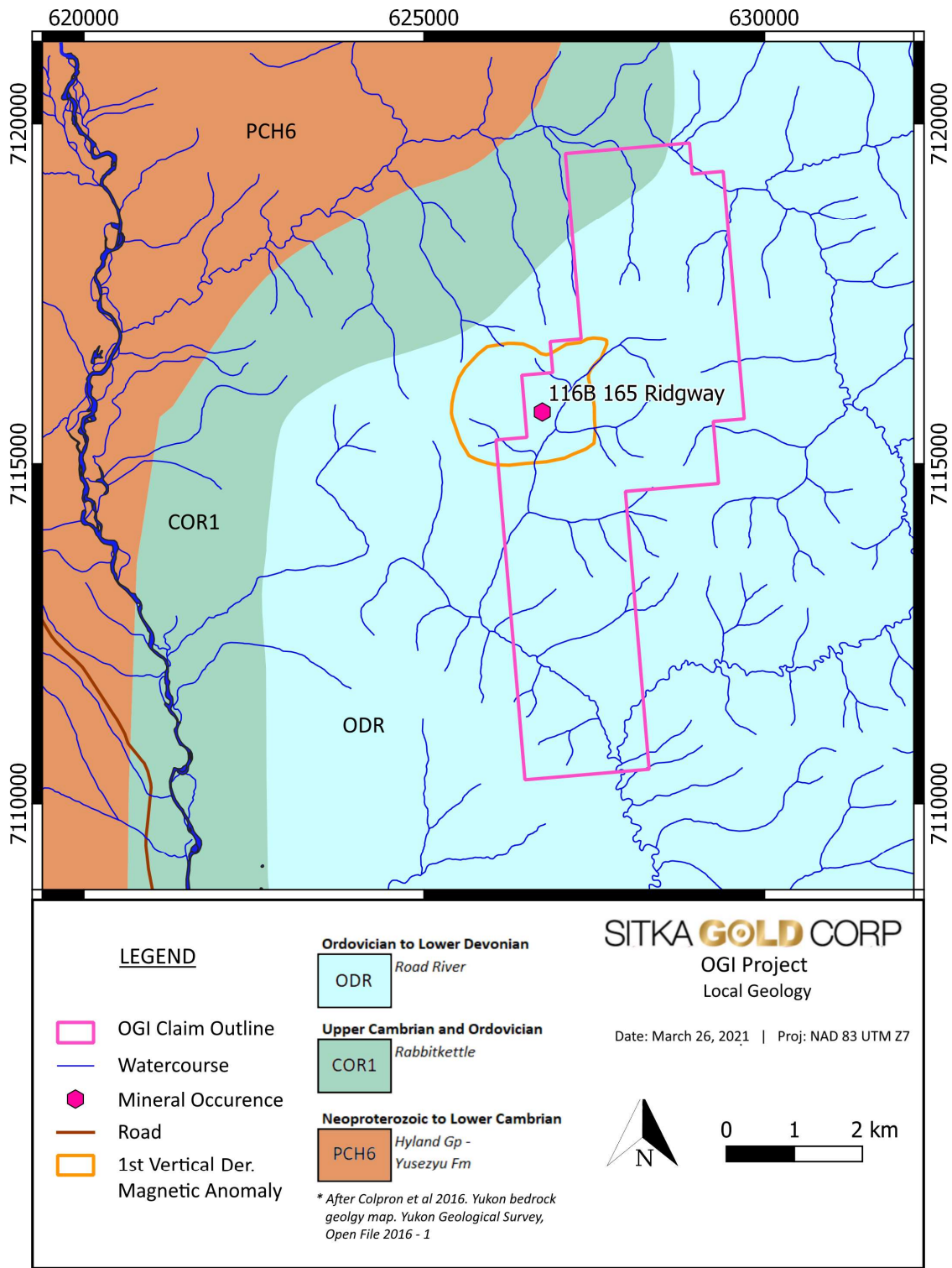


Figure 5 OGI Property Local Geology

PROJECT HISTORY

The area of the OGI Property was originally staked as a gold prospect in 1989 by Tombstone Explorations Company Ltd., who carried out limited prospecting and geochemical silt sampling in 1990 (Minfile 116B 165).

A large area including the Property was re-staked in 1996 as the Oki claims, also known as the Ridgeway prospect. The claim group was optioned to International Kodiak Resources Ltd. (“Kodiak”) and in 1997 Kodiak carried out a regional program of geochemical stream sediment sampling of secondary drainages, soil sampling of drainage divides, prospecting, geological mapping and airborne geophysical surveying. Concurrently with this work Kodiak staked numerous additional claims, to expand the project boundaries eastward, and completed additional reconnaissance geochemical silt sampling.

In 2011, Fox staked the OGI claims to cover the most prospective area where the previous operators had identified a 30 ppb gold silt geochemical anomaly over approximately 3 km² and coincident with an aeromagnetic high and a low K/Th ratio anomaly, interpreted to be a buried intrusion. A grab sample taken by Kodiak from float in the center of the target area returned 895 ppb Au, 1065 ppm As, 10 ppm Sb and 3650 ppm Hg (Figure 6).

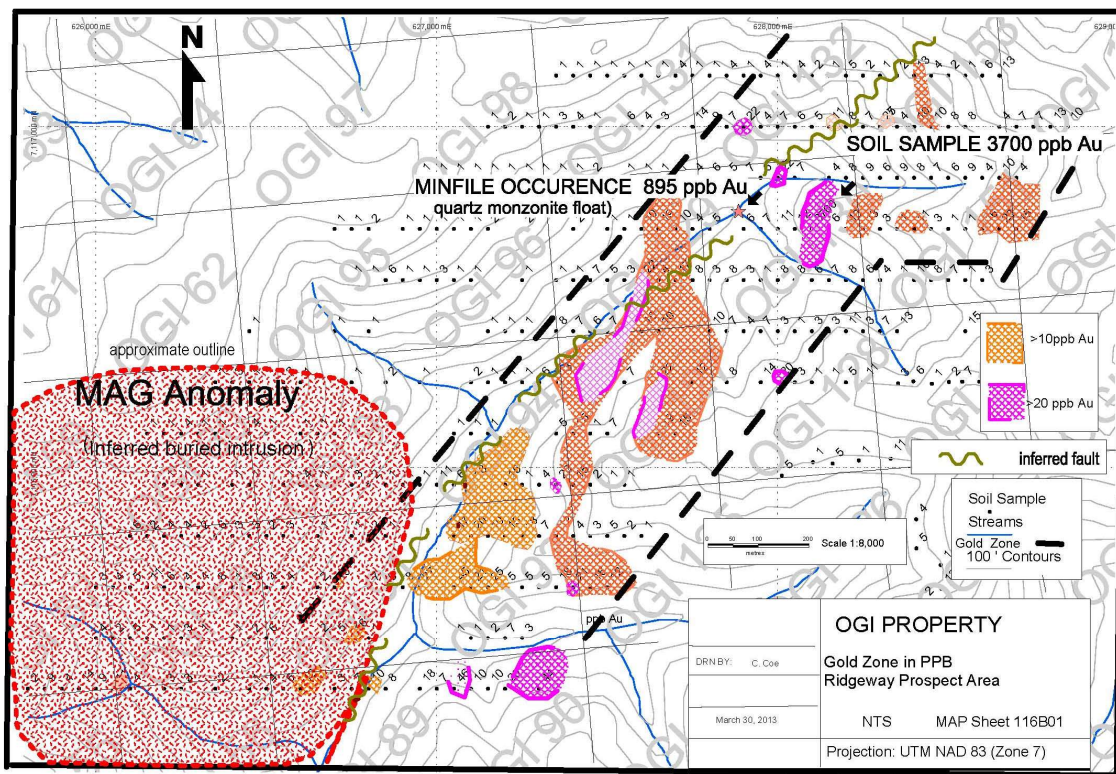


Figure 6: Fox 2011 to 2013 Historic Exploration Results

In 2012, Fox conducted a soil sampling geochemical survey consisting of 13 east-west lines with 50 metre station spacing and 150 metre line spacing over the Ridgeway target area. Limited prospecting

and geological mapping was also conducted. The survey identified a northeast trending corridor of greater than 20 ppb gold, with one 3,700 ppb Au result, that measures approximately one km by three km (Figure 6). The survey also identified an area of strongly anomalous Zn and Ag values in the southeast corner of the soil grid (Figures 7 and 8).

In 2013, Fox expanded the soil survey grid on the southeast part of the property and completed additional prospecting and hand trenching in order to fill in and extend the anomalous Zn-Ag anomaly (Figure 9). The 2013 exploration program also included initial follow up on historic anomalous gold in soil values documented in the northern part of the property (Van Damme et al.1997) not previously visited (the North Gold Zone). The highest results of this survey (26 and 39 ppb Au) are at the southern boundary of the sampled area.

The 2012 and 2013 exploration programs were partially funded through the Yukon Mining Incentive Program.

In 2016, Fox expanded the soil sampling geochemical survey and resampled some of the sample sites where highly anomalous silver and zinc assay results were reported; these results were confirmed. One selective grab rock sample of float was taken and returned over 3% zinc within the Zn-Ag anomaly.

In 2017, Pacific Ridge Resources optioned the Property and conducted limited exploration focused on the anomalous Zn-Ag anomaly. Geological mapping, infill soil sampling (and analysis with a handheld XRF analyser), trenching and a MAG-VLF survey were completed. This work confirmed and added detail to the Zn – Ag anomaly and demonstrated that some east west trending conductors occur within the anomaly (Figure 10).

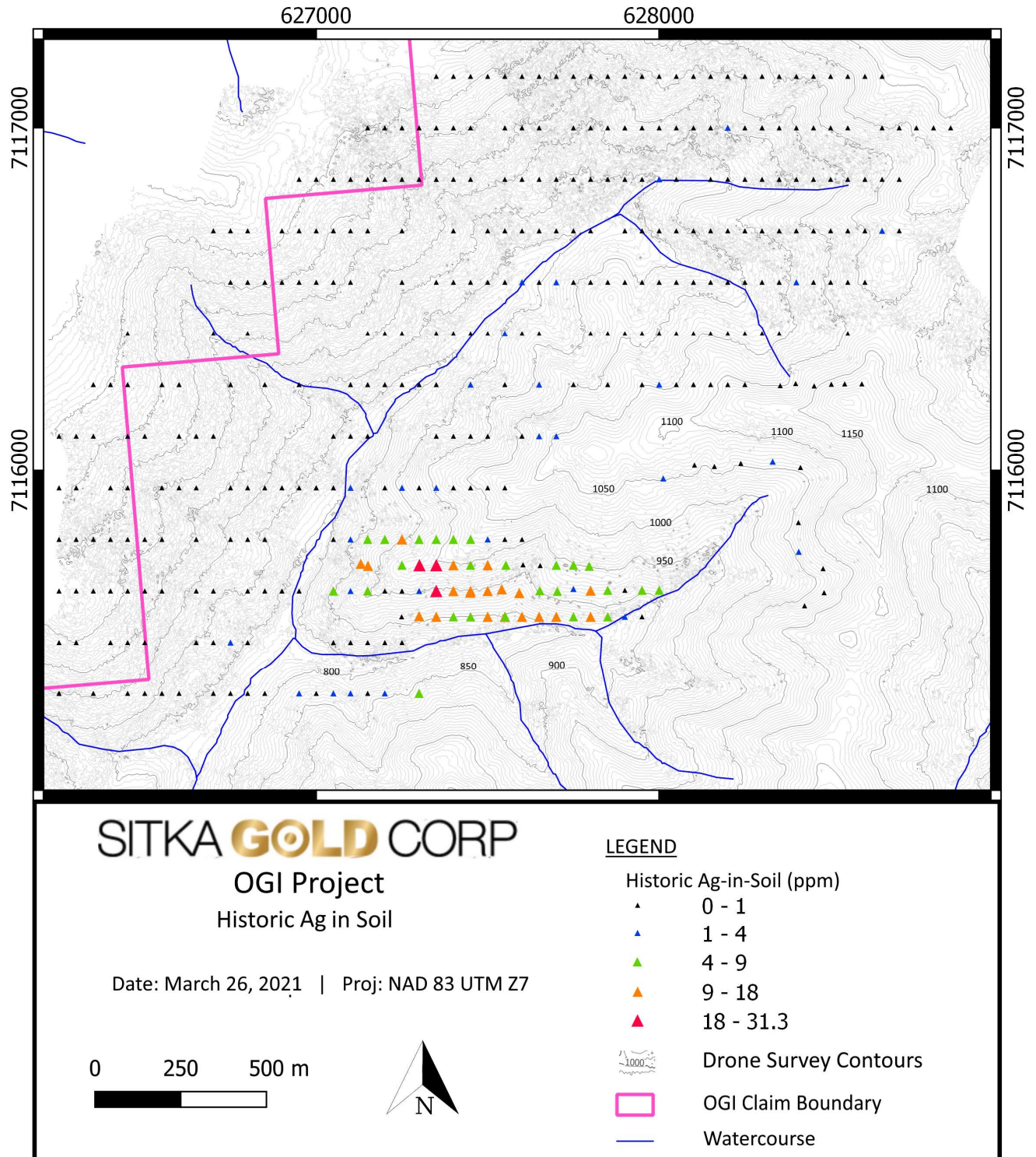


Figure 7 OGI Project Historic Soil

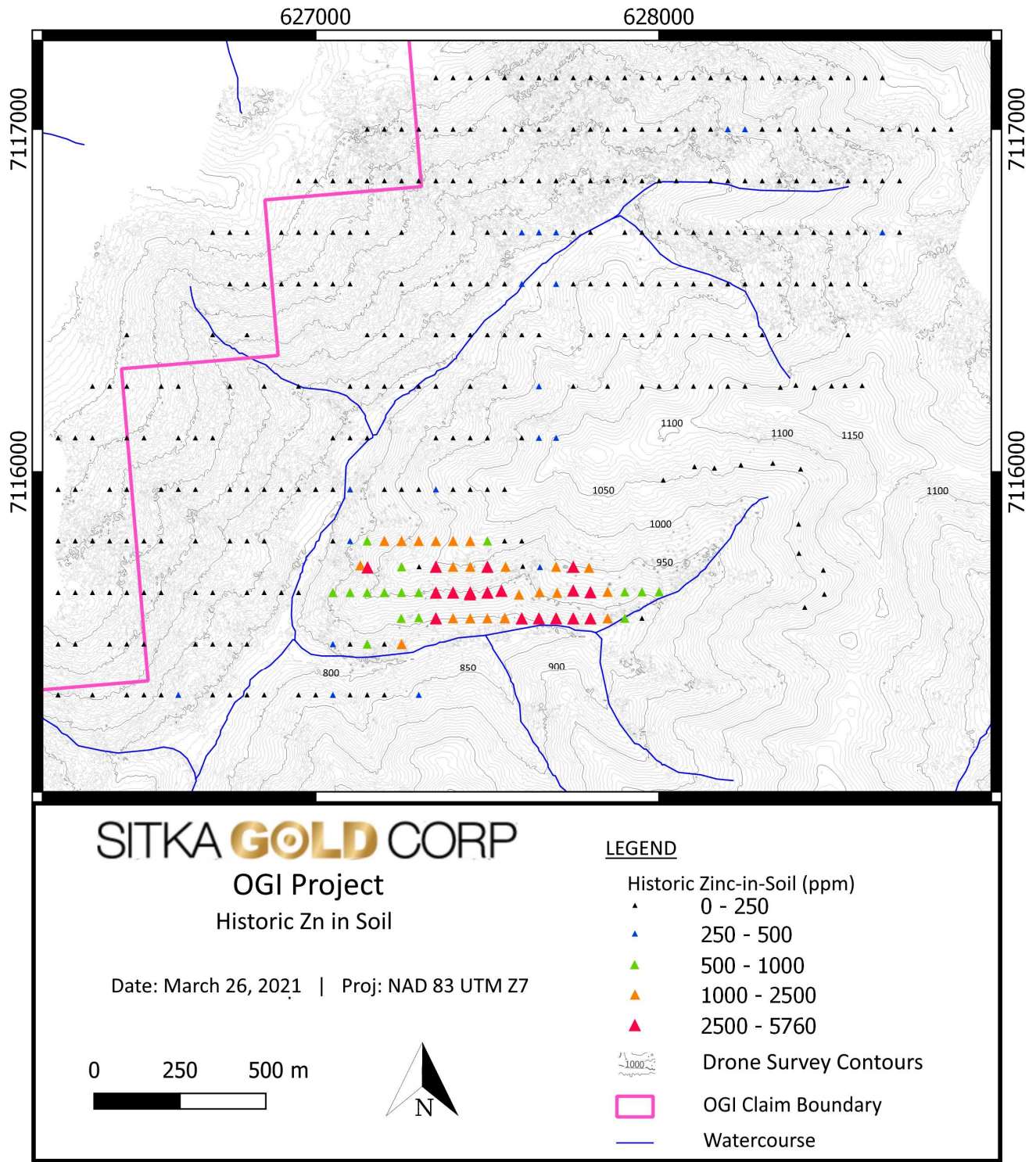
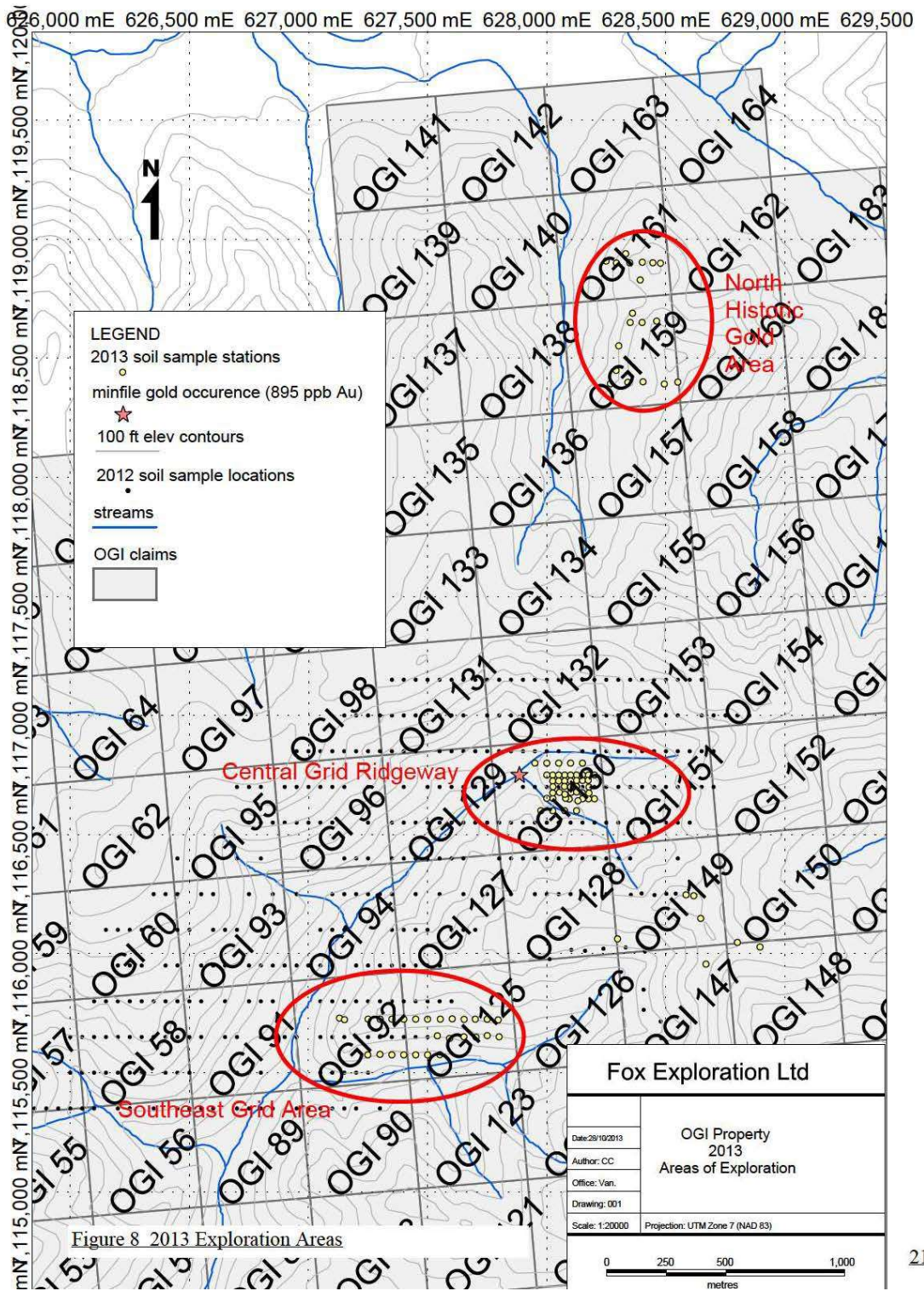


Figure 8 OGI Project Historic Zn in Soil



21

Figure 9: 2013 Work

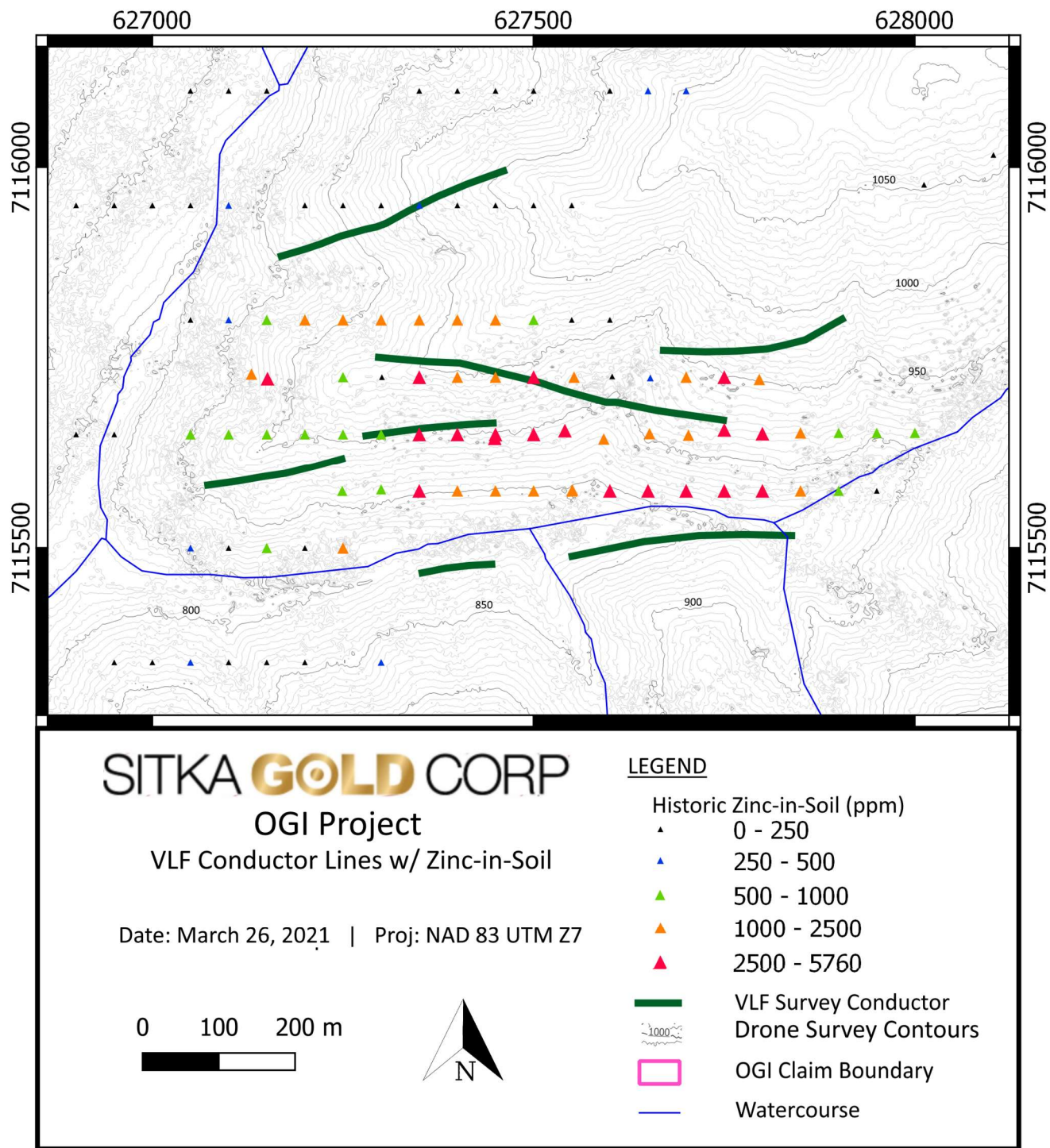


Figure 10 OGI Project VLF Conductor Lines with Zn in Soil

The 2020 exploration program consisted of a 12.2 square kilometer drone survey that produced a detailed topographic map, and a 4 hole, 103.6 m Rotary Air Blast (RAB) drilling program (Figures 11 and 12). Holes

OGI RAB 20-001, 003 and 004 all intersected a black fine grained argillaceous unite that is moderately to strongly anomalous in zinc and silver. The strongest mineralization was encountered in OGI-RAB-20-004, which averaged 1,963 ppm Zn and 5.7 ppm Ag over its entire 30.5 m length. The highest results from the hole were 1.5 m of 5,430 Zn at 13.7 m and 1.5 m of 11.6 g/t Ag at 3.0 m.

Due to broken rock and high water flow, none of the 2020 RAB holes reached target depth of 100 m. So, while the RAB drilling has confirmed that the argillite unit at OGI is moderately to strongly anomalous in Zn and Ag and enriched in SedEx pathfinder elements such as Ba, Mo and V, the argillite unit has only been partially tested and the strong Zn and Ag soil geochemical anomaly at OGI has not been fully explained.

The 2021 exploration program consisted of a 194 station gravity survey which was completed by a crew of two from SJ Geophysics between August 30 and September 6 2021. The crew was based in Dawson City with daily set outs and pick-ups were provided by Fireweed Helicopters in Dawson City. The total cost of the program was \$90,321.18

The survey identified 3 gravity high anomalies and 2 gravity low anomalies that justify further investigation by way of a more detailed compilation of geological and geochemical data, ground truthing and more detailed gravity surveying (Figure 13).

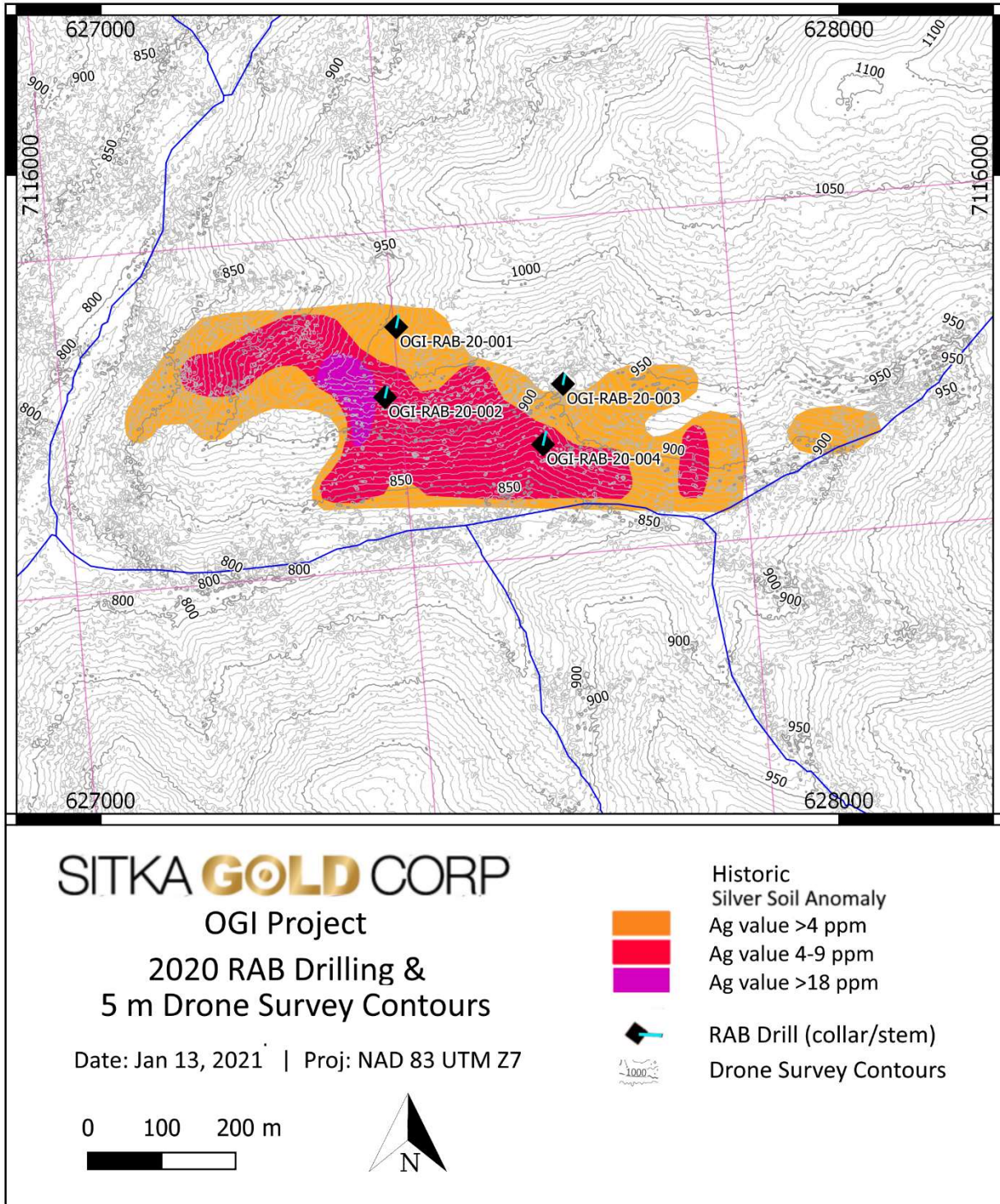


Figure 11 OGI Project 2020 RAB Drilling & 5 m Drone Survey Contours

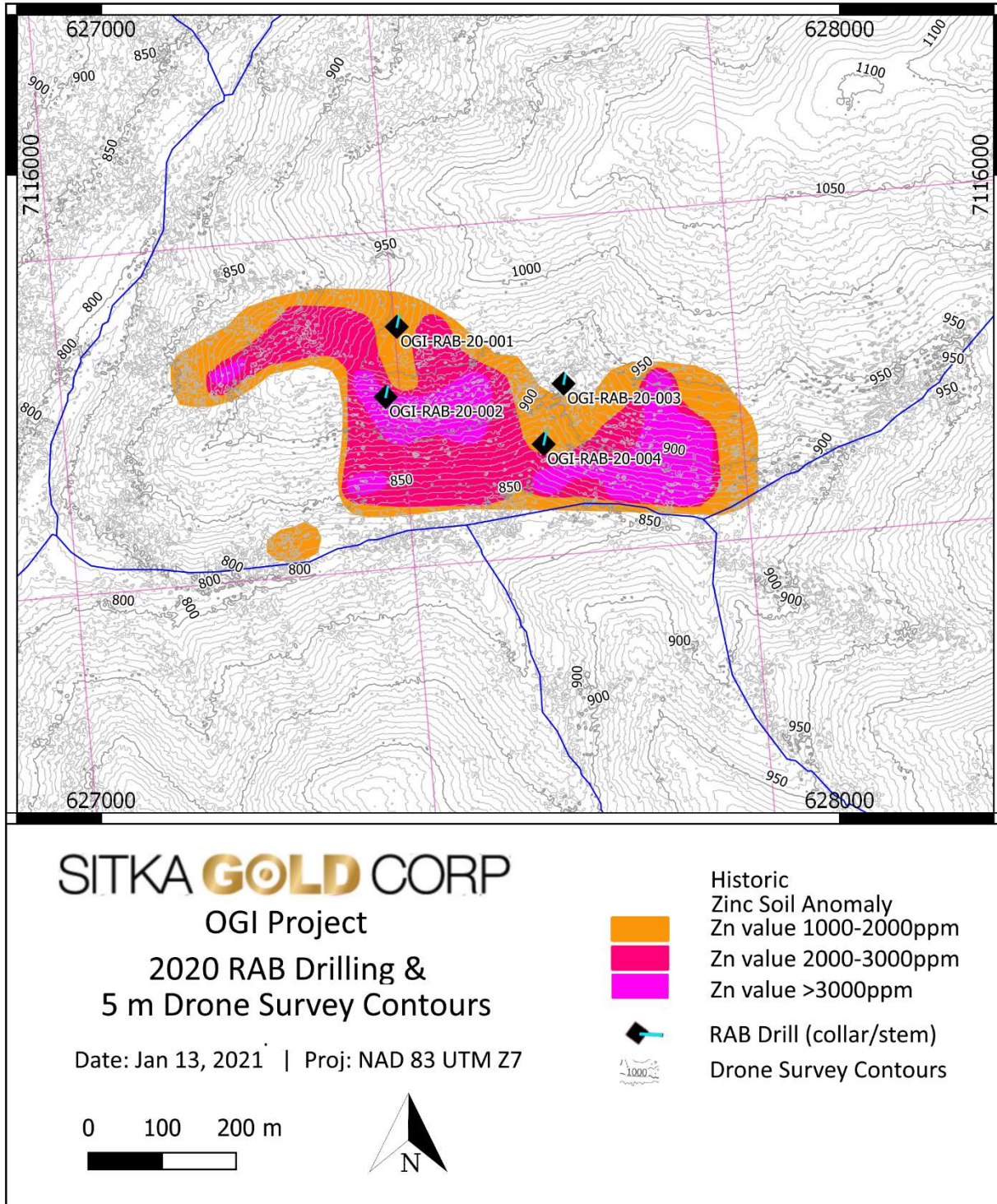


Figure 12 OGI Project 2020 RAB Drilling & 5 m Drone Survey Contours

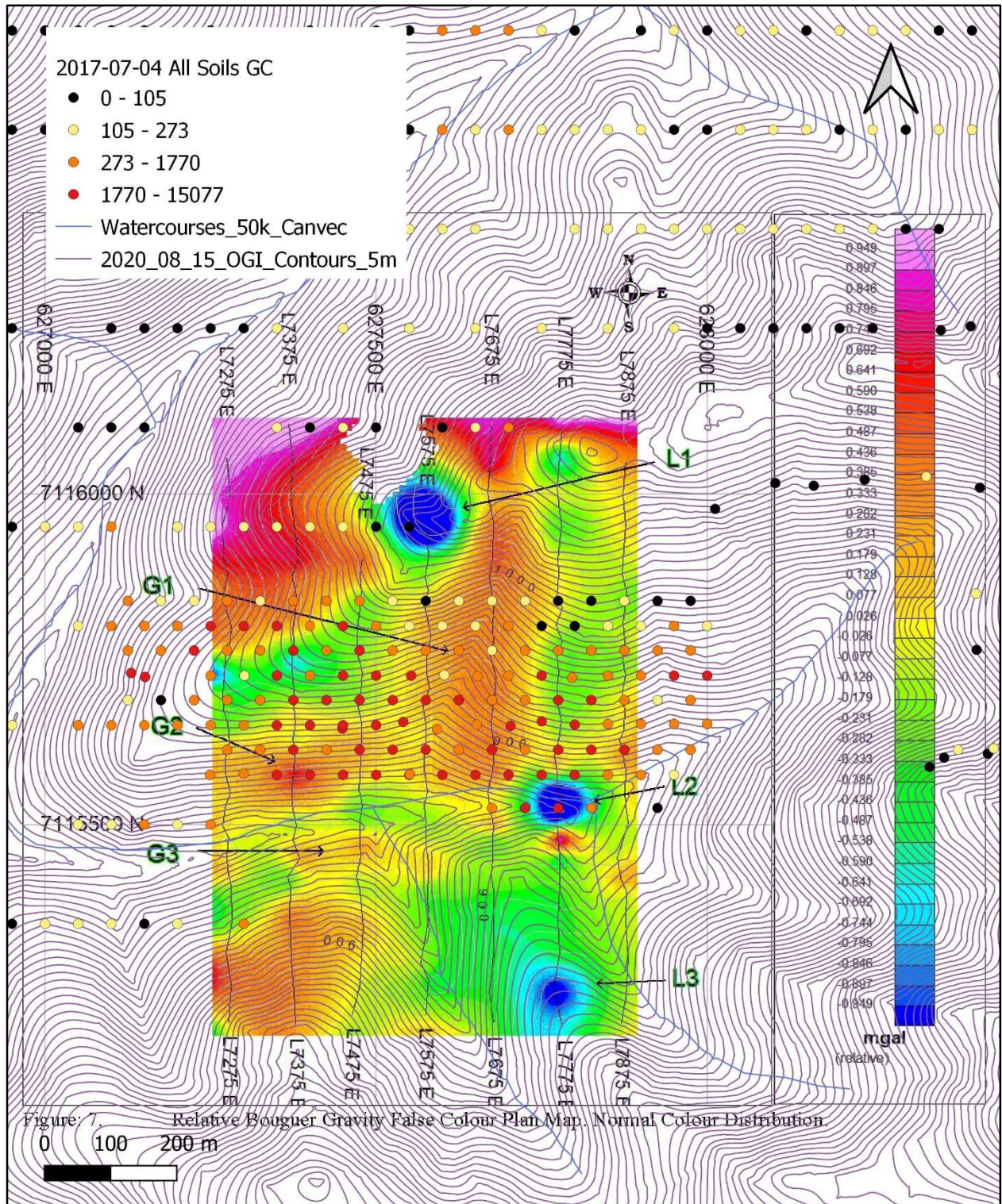


Figure 13: 2022 Gravity Survey Anomalies

EXPLORATION TARGETS

Intrusion Related Gold System

The OGI claims lie within the Tombstone Gold Belt where Fort Knox style mineralization is known to be associated with Tombstone Suite intrusions. This belt extends from Tungsten in the Northwest Territories to the Fairbanks District in Alaska. The Fort Knox, Brewery Creek and Dublin Gulch deposits are included in this belt and are currently being mined or developed. The OGI Property is approximately 4 kilometres northwest of Golden Predator's Brewery Creek property (789,000 oxide gold ounces contained in 22.20 million tonnes of material with an average grade of 1.11 g/t, and Inferred mineral resources of 497,000 oxide gold ounces contained in 16.80 million tonnes with an average grade of 0.92 g/t Mineralization may also be structurally controlled and associated with northeast trending faults as evident at Brewery Creek and Mike Lake.

SedEx Deposit

The second target type at the OGI Property is a stratabound, sedimentary exhalative (SedEx) base and precious metal deposit such as Howards Pass and possibly also the Nick occurrence, in Road River stratigraphy within the Selwyn Basin.

The Road River Formation that underlies the Property is known throughout the Selwyn Basin to host SedEx style base and precious metal mineralization. The geochemical signature at OGI (Zn-Ag- Mo-Ni-As-Sb-V-P; Pt, Pd and Se were not analyzed) has similarities to Howards Pass (Zn-Pb-Ag- Cd-Mo-Co-Ni-Ba-V-P) and Nick (Ni-Pt-Pd-Ag-Zn-Mo-As-Ba-Se). This metal association suggests that the source of the OGI soil anomaly is a SedEx style target and not simply a Zn-rich seep or ferricrete associated with a fault zone or a small intrusive (G. Carlson, 2017).

The soil anomaly has been defined by sampling conducted by Fox and Pacific Ridge over the past several years (Coe 2012, 2013, 2016; G. Carlson, 2017). The anomaly is more than 1000 m long and 500 m wide. The shape of the anomaly, elongated in an east-west direction, but sinuous, suggests that it may be reflecting a source within folded or faulted strata. The anomaly is open to the south and east.

The strongest portion of the anomaly contains Zn values ranging from 3,000 to over 15,000 ppm and Ag ranging from 10 to 53.5 ppm. All the anomalous elements show a good correlation in their spatial distribution. zinc, barium and phosphorus show a broader dispersion than silver, nickel, arsenic and antimony, due either to their wider distribution in underlying bedrock or enhanced dispersion characteristics in the soil profile.

2022 EXPLORATION PROGRAM

The 2022 exploration program on the OGI property consisted of the collection of 606 soil samples and 2 rock samples (Figure 14). A total 348 samples were collected on a 100 m by 50 m grid to infill an area between historic samples that had not been sampled while 258 samples were collected at a 50 by 25 m spacing around a historic high grade soil sample which returned 3.7 g/t Au. The 2 rock samples were collected from a hand dug pit at the site of the 3.7 g/t Au sample. The work was completed by GroundTruth Exploration of Dawson City between September 5 and September 15, 2022. In a addition

to the soil sampling and rock sampling, one day (August 18) was spent prospecting the area of the 3.7 g/t Au soil sampled and the mapped location of the Ridgeway Minfile occurrence (895 ppb Au, 1,065 ppm As, 10 ppm Sb and 3,650 ppm Hg in quartz monzonite float).

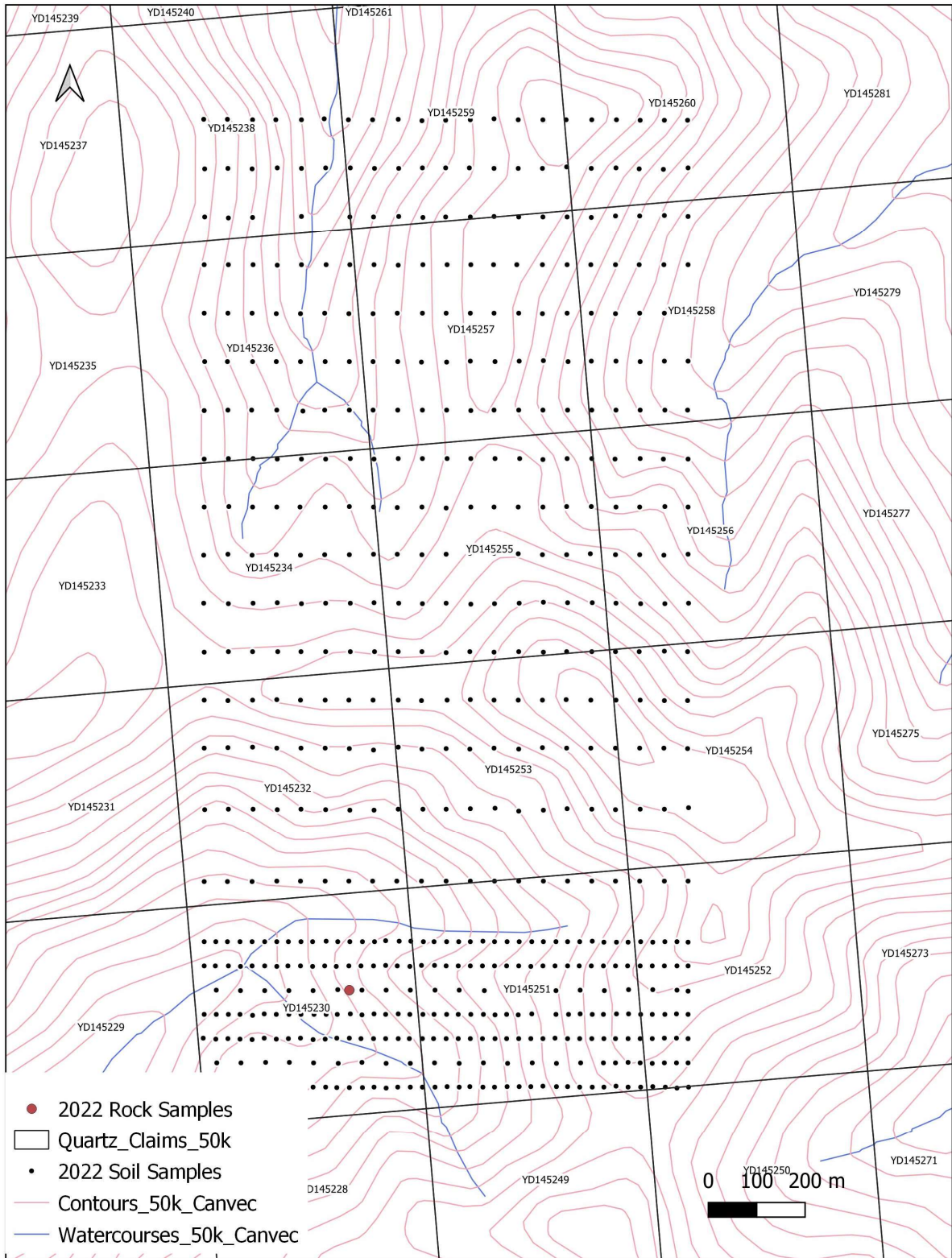


Figure 14: 2022 Rock and Soil Sample Locations

Soil Sampling Results

Descriptive statistics for gold for the 2022 soil samples are shown below in Table 2. A symbol plot for Au results is shown in Figure 15 (historic results are faded).

Descriptor	Au ppb
Mean	6.37
Median	4.70
Mode	3.30
Standard Deviation	5.70
Minimum	0.25
Maximum	57.30

Table 1 Gold in Soil Descriptive Statistics

In general, the 2022 soil samples returned the same order of magnitude Au results as the historic sampling. The two highest samples (57 ppb and 57.1 ppb) were in the northern part of the grid about 200 m to the southeast of two statistically higher samples (39 and 26 ppb Au) from the historic samples. The infill samples taken on the 50 by 25 m grid returned Au results up to 34.5 ppb, but did not show any consistently elevated Au results around the historic 3,700 ppm Au result.

Prospecting and Rock Sampling Results

One day of prospecting on August 18 investigated the area of the historic 3.7 g/t Au soil sample and the site of 895 ppb Au associated with Minfile #116B01 (Sample AR0235A, Van Damme, 1997). In addition, during the course of the soil sampling program, GroundTruth personnel hand excavated a 0.5 m pit at the site and collected two samples, 2006976 and 2006977.

The site of the 3.7 ppb soil sample was found to be underlain by subcrop of variably rusty chert and argillite. Sample 1774374 was a random grab of fragments of the chert and argillite and returned 3 ppb Au. No other elements of interest were identified in the sample. The samples collected by GroundTruth contained 14 and 11 ppb Au respectively and also did not contain any other significant elements of interest.

The mapped site of sample AR0235A, as determined by reference to Van Damme, 1997, is located about 1.5 km to the northeast of where the Minfile occurrence is plotted on GeoYukon. Since the accuracy given on GeoYukon is 0.5 km, the original site as documented by Van Damme was considered as correct. Nonetheless, no outcrop, subcrop or float was seen at the site provided by Van Damme so this historic site could not be confirmed.

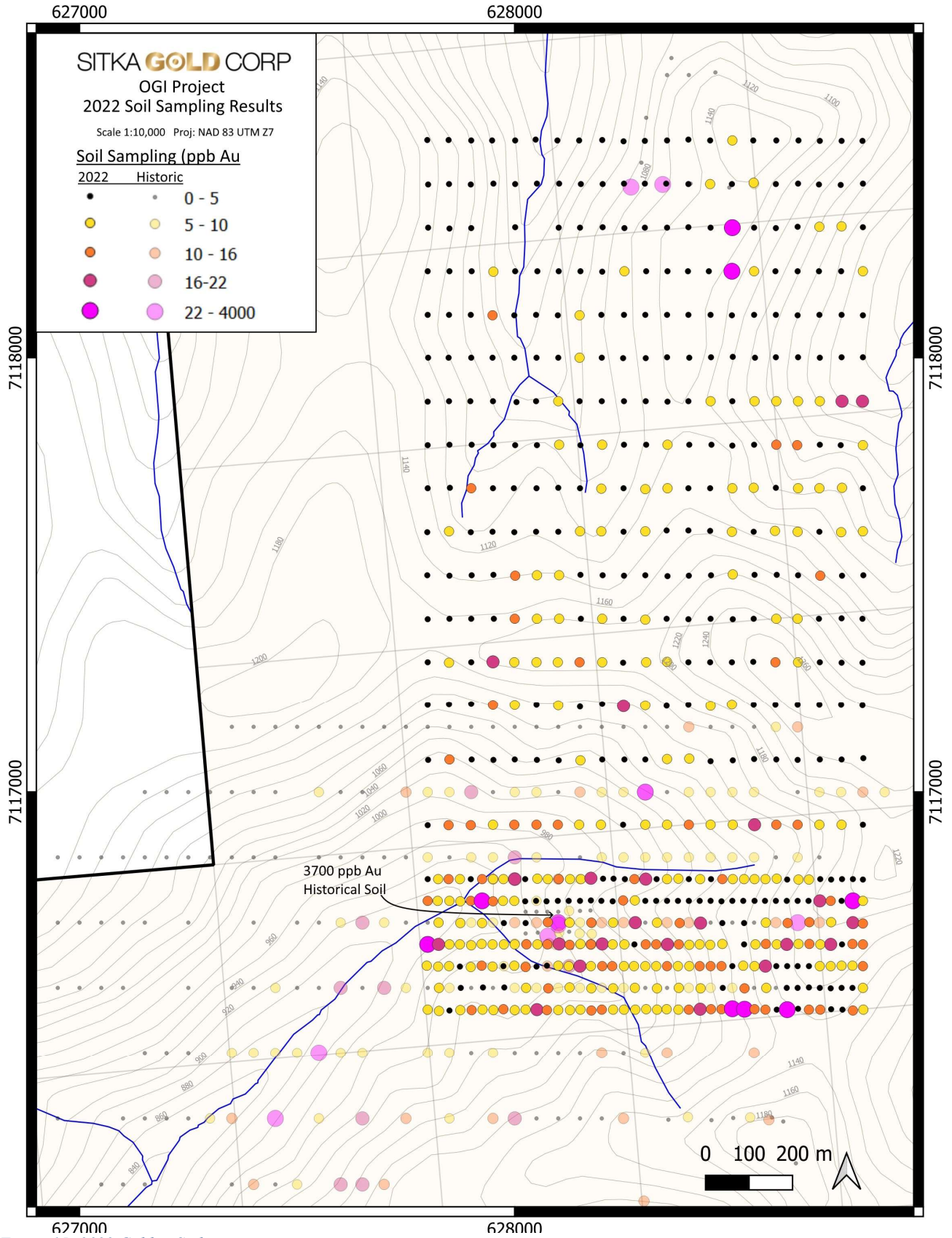


Figure 15: 2022 Gold in Soil

Conclusions and Recommendations.

The source of the 895 ppb Au sample of quartz monzonite associated with Minfile occurrence #116B01 and the historic 3,700 ppb Au soil result at the Ridgeway showing have remained unexplained. To investigate these targets, the 2022 exploration program on the OGI property consisted of the collection of 606 soil samples and 3 rock samples. A total 348 samples were collected on a 100 m by 50 m grid to infill an area between historic samples that had not been sampled while 258 samples were collected at a 50 by 25 m spacing around a historic high grade soil sample which returned 3,700 ppb Au. The 3 rock samples were collected at the site of the 3.7 g/t Au sample.

None of soil or rock sampling indicated the presence of economic gold mineralization. The historically mapped location of the grab sample of monzonite containing 895 ppb Au was in an overburden covered valley bottom with no obvious signs of outcrop, float or subcrop. So the provenance of this sample still remains unknown.

The 2022 exploration program demonstrates that economically significant gold mineralization is unlikely to occur in the area investigate. This program did not, however, follow up on the recommendations of the 2021 work which was focused on the zinc – silver potential of the southern part of the property. The recommendations of that report (2021 Gravity Survey on the OGI Zinc Property, Dawson, 2022) are still valid and are excerpted below:

Correlate this data and the interpretation with existing geological and geophysical data.

Obtain measured specific gravities of relevant rock units. This could refine the modelling and re-working the data with a different Bouguer density could produce different patterns and interpretations.

Ground prospecting and geological mapping across anomalies should be reviewed or undertaken. Priority should be given to the targets G1 and L2.

Additional gravity surveying would assist the geophysical interpretation, however correlation of this data with existing geological and geophysical data should be the first priority.

Statement of Expenditures

<u>Company</u>	<u>Description</u>	<u>Amounts</u>
Groundtruth Exploration (Inv. 10885)	Soil Sampling Survey Work	\$50,052.50
Groundtruth Exploration (Inv. 10900)	Soil Sampling Helicopter Support (rebill)	\$10,328.35
Horizon Helicopter (Inv. 5433395)	Helicopter Support	\$1,348.00
Analytical Costs	3 rock samples @ \$60 per sample	\$180.00
Room and Board	Geologist accommodation and food in Dawson City	\$312.68
Truck Rental	2 days at \$185 per day	\$370.00
Greg Dawson (Geologist)	1 day at \$750 per day	\$750.00
Data Interpretation & Final Report	Final Report	\$4,000.00
TOTAL:		\$67,341.53

Table 2 Statement of Expenditures

STATEMENT OF QUALIFICATIONS

I, John Gregory Dawson, do hereby declare that:

1. I am currently working as a consultant based out of my home in Courtenay, British Columbia.
2. I graduated with a Bachelor Science degree from the University of British Columbia in 1987 and a Master of Science degree from Queens' University in 1991.
3. I am a member of the Association of Professional Engineers and Geoscientists of British Columbia, Registration Number 19882.
4. I have worked as a geologist for a total of 33 years since graduation from university, and prior to graduation, as a student and or geo-technician for a period of 11 additional years.
5. I have read the definition of "Qualified Person" set out in National Instrument 43-101("NI 43-101") and certify that by reason of my education, affiliation with a professional association and past relevant work experience, I fulfill the requirements to be a "Qualified Person" for the purposes of NI 43-101.
6. I am not aware of any material fact or material change with respect to the subject matter of this report, the omission to disclose which makes this report misleading.
7. I am not independent of the Sitka Gold Corp. applying all tests in Section 1.5 of NI 43-101 in that I have shares and share options in the Company and am a Director of the Company.

Dated this 31st day of January, 2023



John Gregory Dawson, P. Geo.

REFERENCES CITED

- Coe, C., 2012, Assessment Report for the OGI Claim Property, YMIP #12-070, Dawson Mining District, Yukon.
- Coe, C., 2013, Assessment Report for the OGI Claim Property, YMIP #13-067, Dawson Mining District, Yukon.
- Coe, C., 2016, Geochemical Assessment report for the OGI Claim Property.
- G. Carlson, 2017, Assessment Report on OGI Zinc, Dawson Mining District, Yukon.
- Dawson, J.G, 2020, Assessment Report on the OGI Zinc Property, Dawson Mining District, Yukon (report is filed with the YGS but remains confidential).
- Dawson, J.G, 2022, Assessment Report on the OGI Zinc Property, Dawson Mining District, Yukon (report is filed with the YGS but remains confidential).
- Dawson, J.G, 2021; 2020 RAB Drilling and Drone Imagery Report on the OGI Zinc Property, YMEP 20-041
- Geological Survey of Canada, 1998, Airborne geophysical survey (NTS 116 B/1, A/4 and 115 P/13), Brewery Creek Area, Yukon Territory. Open Files 3551 and 3607.
- Van Damme, V.P., B.T. Malahoff and C.A. Kauss, 1997, Geological, Geophysical, and Geochemical Assessment Report on the OKI-DOKI Project Claims, report for International Kodiak Exploration Ltd.
- Yukon Geological Survey. MinFile 116B 165; Ridgeway occurrence.

APPENDIX I

OGI Property Claim List

OGI Claim Status December 31, 2022

District	Grant	Name	Number	Claim owner	Expiry	Status	NTS Map	Grouping	Notification Approval
Dawson	YD145136	OGI	36	Fox Exploration Limited - 100%	2035-10-28	Active	116B01	HD03382	Q2021_0184 - C1Q00353
Dawson	YD145138	OGI	38	Fox Exploration Limited - 100%	2035-10-28	Active	116B01	HD03382	Q2021_0184 - C1Q00353
Dawson	YD145140	OGI	40	Fox Exploration Limited - 100%	2035-10-28	Active	116B01	HD03382	Q2021_0184 - C1Q00353
Dawson	YD145142	OGI	42	Fox Exploration Limited - 100%	2035-10-28	Active	116B01	HD03382	Q2021_0184 - C1Q00353
Dawson	YD145144	OGI	44	Fox Exploration Limited - 100%	2035-10-28	Active	116B01	HD03382	Q2021_0184 - C1Q00353
Dawson	YD145146	OGI	46	Fox Exploration Limited - 100%	2035-10-28	Active	116B01	HD03382	Q2021_0184 - C1Q00353
Dawson	YD145148	OGI	48	Fox Exploration Limited - 100%	2035-10-28	Active	116B01	HD03382	Q2021_0184 - C1Q00353
Dawson	YD145150	OGI	50	Fox Exploration Limited - 100%	2035-10-28	Active	116B01	HD03382	Q2021_0184 - C1Q00353
Dawson	YD145152	OGI	52	Fox Exploration Limited - 100%	2035-10-28	Active	116B01	HD03382	Q2021_0184 - C1Q00353
Dawson	YD145154	OGI	54	Fox Exploration Limited - 100%	2035-10-28	Active	116B01	HD03382	Q2021_0184 - C1Q00353
Dawson	YD145156	OGI	56	Fox Exploration Limited - 100%	2035-10-28	Active	116B01	HD03382	Q2021_0184 - C1Q00353
Dawson	YD145169	OGI	69	Fox Exploration Limited - 100%	2035-10-28	Active	116B01	HD03382	Q2021_0184 - C1Q00353
Dawson	YD145170	OGI	70	Fox Exploration Limited - 100%	2035-10-28	Active	116B01	HD03382	Q2021_0184 - C1Q00353
Dawson	YD145171	OGI	71	Fox Exploration Limited - 100%	2035-10-28	Active	116B01	HD03382	Q2021_0184 - C1Q00353
Dawson	YD145172	OGI	72	Fox Exploration Limited - 100%	2035-10-28	Active	116B01	HD03382	Q2021_0184 - C1Q00353
Dawson	YD145173	OGI	73	Fox Exploration Limited - 100%	2035-10-28	Active	116B01	HD03382	Q2021_0184 - C1Q00353
Dawson	YD145174	OGI	74	Fox Exploration Limited - 100%	2035-10-28	Active	116B01	HD03382	Q2021_0184 - C1Q00353
Dawson	YD145175	OGI	75	Fox Exploration Limited - 100%	2035-10-28	Active	116B01	HD03382	Q2021_0184 - C1Q00353
Dawson	YD145176	OGI	76	Fox Exploration Limited - 100%	2035-10-28	Active	116B01	HD03382	Q2021_0184 - C1Q00353
Dawson	YD145177	OGI	77	Fox Exploration Limited - 100%	2035-10-28	Active	116B01	HD03382	Q2021_0184 - C1Q00353

Dawson	YD145178	OGI	78	Fox Exploration Limited - 100%	2035-10-28	Active	116B01	HD03382	Q2021_0184 - C1Q00353
Dawson	YD145179	OGI	79	Fox Exploration Limited - 100%	2035-10-28	Active	116B01	HD03382	Q2021_0184 - C1Q00353
Dawson	YD145180	OGI	80	Fox Exploration Limited - 100%	2035-10-28	Active	116B01	HD03382	Q2021_0184 - C1Q00353
Dawson	YD145181	OGI	81	Fox Exploration Limited - 100%	2035-10-28	Active	116B01	HD03382	Q2021_0184 - C1Q00353
Dawson	YD145182	OGI	82	Fox Exploration Limited - 100%	2035-10-28	Active	116B01	HD03382	Q2021_0184 - C1Q00353
Dawson	YD145183	OGI	83	Fox Exploration Limited - 100%	2035-10-28	Active	116B01	HD03382	Q2021_0184 - C1Q00353
Dawson	YD145184	OGI	84	Fox Exploration Limited - 100%	2035-10-28	Active	116B01	HD03382	Q2021_0184 - C1Q00353
Dawson	YD145185	OGI	85	Fox Exploration Limited - 100%	2035-10-28	Active	116B01	HD03382	Q2021_0184 - C1Q00353
Dawson	YD145186	OGI	86	Fox Exploration Limited - 100%	2035-10-28	Active	116B01	HD03382	Q2021_0184 - C1Q00353
Dawson	YD145187	OGI	87	Fox Exploration Limited - 100%	2035-10-28	Active	116B01	HD03382	Q2021_0184 - C1Q00353
Dawson	YD145188	OGI	88	Fox Exploration Limited - 100%	2035-10-28	Active	116B01	HD03382	Q2021_0184 - C1Q00353
Dawson	YD145189	OGI	89	Fox Exploration Limited - 100%	2035-10-28	Active	116B01	HD03382	Q2021_0184 - C1Q00353
Dawson	YD145190	OGI	90	Fox Exploration Limited - 100%	2035-10-28	Active	116B01	HD03382	Q2021_0184 - C1Q00353
Dawson	YD145191	OGI	91	Fox Exploration Limited - 100%	2035-10-28	Active	116B01	HD03382	Q2021_0184 - C1Q00353
Dawson	YD145192	OGI	92	Fox Exploration Limited - 100%	2035-10-28	Active	116B01	HD03382	Q2021_0184 - C1Q00353
Dawson	YD145193	OGI	93	Fox Exploration Limited - 100%	2035-10-28	Active	116B01	HD03382	Q2021_0184 - C1Q00353
Dawson	YD145194	OGI	94	Fox Exploration Limited - 100%	2035-10-28	Active	116B01	HD03382	Q2021_0184 - C1Q00353
Dawson	YD145196	OGI	96	Fox Exploration Limited - 100%	2035-10-28	Active	116B01	HD03382	Q2021_0184 - C1Q00353
Dawson	YD145203	OGI	103	Fox Exploration Limited - 100%	2035-10-28	Active	116B01	HD03382	Q2021_0184 - C1Q00353
Dawson	YD145205	OGI	105	Fox Exploration Limited - 100%	2035-10-28	Active	116B01	HD03382	Q2021_0184 - C1Q00353
Dawson	YD145207	OGI	107	Fox Exploration Limited - 100%	2035-10-28	Active	116B01	HD03382	Q2021_0184 - C1Q00353
Dawson	YD145209	OGI	109	Fox Exploration Limited - 100%	2035-10-28	Active	116B01	HD03382	Q2021_0184 - C1Q00353

Dawson	YD145211	OGI	111	Fox Exploration Limited - 100%	2035-10-28	Active	116B01	HD03382	Q2021_0184 - C1Q00353
Dawson	YD145213	OGI	113	Fox Exploration Limited - 100%	2035-10-28	Active	116B01	HD03382	Q2021_0184 - C1Q00353
Dawson	YD145215	OGI	115	Fox Exploration Limited - 100%	2035-10-28	Active	116B01	HD03382	Q2021_0184 - C1Q00353
Dawson	YD145217	OGI	117	Fox Exploration Limited - 100%	2035-10-28	Active	116B01	HD03382	Q2021_0184 - C1Q00353
Dawson	YD145219	OGI	119	Fox Exploration Limited - 100%	2035-10-28	Active	116B01	HD03382	Q2021_0184 - C1Q00353
Dawson	YD145221	OGI	121	Fox Exploration Limited - 100%	2035-10-28	Active	116B01	HD03382	Q2021_0184 - C1Q00353
Dawson	YD145222	OGI	122	Fox Exploration Limited - 100%	2035-10-28	Active	116B01	HD03382	Q2021_0184 - C1Q00353
Dawson	YD145223	OGI	123	Fox Exploration Limited - 100%	2035-10-28	Active	116B01	HD03382	Q2021_0184 - C1Q00353
Dawson	YD145224	OGI	124	Fox Exploration Limited - 100%	2035-10-28	Active	116B01	HD03382	Q2021_0184 - C1Q00353
Dawson	YD145225	OGI	125	Fox Exploration Limited - 100%	2035-10-28	Active	116B01	HD03382	Q2021_0184 - C1Q00353
Dawson	YD145226	OGI	126	Fox Exploration Limited - 100%	2035-10-28	Active	116B01	HD03382	Q2021_0184 - C1Q00353
Dawson	YD145227	OGI	127	Fox Exploration Limited - 100%	2035-10-28	Active	116B01	HD03382	Q2021_0184 - C1Q00353
Dawson	YD145228	OGI	128	Fox Exploration Limited - 100%	2035-10-28	Active	116B01	HD03382	Q2021_0184 - C1Q00353
Dawson	YD145229	OGI	129	Fox Exploration Limited - 100%	2035-10-28	Active	116B01	HD03382	Q2021_0184 - C1Q00353
Dawson	YD145230	OGI	130	Fox Exploration Limited - 100%	2035-10-28	Active	116B01	HD03382	Q2021_0184 - C1Q00353
Dawson	YD145231	OGI	131	Fox Exploration Limited - 100%	2035-10-28	Active	116B01	HD03382	Q2021_0184 - C1Q00353
Dawson	YD145232	OGI	132	Fox Exploration Limited - 100%	2035-10-28	Active	116B01	HD03382	Q2021_0184 - C1Q00353
Dawson	YD145233	OGI	133	Fox Exploration Limited - 100%	2035-10-28	Active	116B01	HD03382	Q2021_0184 - C1Q00353
Dawson	YD145234	OGI	134	Fox Exploration Limited - 100%	2035-10-28	Active	116B01	HD03382	Q2021_0184 - C1Q00353
Dawson	YD145235	OGI	135	Fox Exploration Limited - 100%	2035-10-28	Active	116B01	HD03382	Q2021_0184 - C1Q00353
Dawson	YD145236	OGI	136	Fox Exploration Limited - 100%	2035-10-28	Active	116B01	HD03382	Q2021_0184 - C1Q00353
Dawson	YD145237	OGI	137	Fox Exploration Limited - 100%	2035-10-28	Active	116B01	HD03382	Q2021_0184 - C1Q00353

Dawson	YD145238	OGI	138	Fox Exploration Limited - 100%	2035-10-28	Active	116B01	HD03382	Q2021_0184 - C1Q00353
Dawson	YD145239	OGI	139	Fox Exploration Limited - 100%	2035-10-28	Active	116B01	HD03382	Q2021_0184 - C1Q00353
Dawson	YD145240	OGI	140	Fox Exploration Limited - 100%	2035-10-28	Active	116B01	HD03382	Q2021_0184 - C1Q00353
Dawson	YD145241	OGI	141	Fox Exploration Limited - 100%	2035-10-28	Active	116B01	HD03382	Q2021_0184 - C1Q00353
Dawson	YD145242	OGI	142	Fox Exploration Limited - 100%	2035-10-28	Active	116B01	HD03382	Q2021_0184 - C1Q00353
Dawson	YD145243	OGI	143	Fox Exploration Limited - 100%	2035-10-28	Active	116B01	HD03382	Q2021_0184 - C1Q00353
Dawson	YD145244	OGI	144	Fox Exploration Limited - 100%	2035-10-28	Active	116B01	HD03382	Q2021_0184 - C1Q00353
Dawson	YD145245	OGI	145	Fox Exploration Limited - 100%	2035-10-28	Active	116B01	HD03382	Q2021_0184 - C1Q00353
Dawson	YD145246	OGI	146	Fox Exploration Limited - 100%	2035-10-28	Active	116B01	HD03382	Q2021_0184 - C1Q00353
Dawson	YD145247	OGI	147	Fox Exploration Limited - 100%	2035-10-28	Active	116B01	HD03382	Q2021_0184 - C1Q00353
Dawson	YD145248	OGI	148	Fox Exploration Limited - 100%	2035-10-28	Active	116B01	HD03382	Q2021_0184 - C1Q00353
Dawson	YD145249	OGI	149	Fox Exploration Limited - 100%	2035-10-28	Active	116B01	HD03382	Q2021_0184 - C1Q00353
Dawson	YD145250	OGI	150	Fox Exploration Limited - 100%	2035-10-28	Active	116B01	HD03382	Q2021_0184 - C1Q00353
Dawson	YD145251	OGI	151	Fox Exploration Limited - 100%	2035-10-28	Active	116B01	HD03382	Q2021_0184 - C1Q00353
Dawson	YD145252	OGI	152	Fox Exploration Limited - 100%	2035-10-28	Active	116B01	HD03382	Q2021_0184 - C1Q00353
Dawson	YD145253	OGI	153	Fox Exploration Limited - 100%	2035-10-28	Active	116B01	HD03382	Q2021_0184 - C1Q00353
Dawson	YD145254	OGI	154	Fox Exploration Limited - 100%	2035-10-28	Active	116B01	HD03382	Q2021_0184 - C1Q00353
Dawson	YD145255	OGI	155	Fox Exploration Limited - 100%	2035-10-28	Active	116B01	HD03382	Q2021_0184 - C1Q00353
Dawson	YD145256	OGI	156	Fox Exploration Limited - 100%	2035-10-28	Active	116B01	HD03382	Q2021_0184 - C1Q00353
Dawson	YD145257	OGI	157	Fox Exploration Limited - 100%	2035-10-28	Active	116B01	HD03382	Q2021_0184 - C1Q00353
Dawson	YD145258	OGI	158	Fox Exploration Limited - 100%	2035-10-28	Active	116B01	HD03382	Q2021_0184 - C1Q00353
Dawson	YD145259	OGI	159	Fox Exploration Limited - 100%	2035-10-28	Active	116B01	HD03382	Q2021_0184 - C1Q00353

Dawson	YD145260	OGI	160	Fox Exploration Limited - 100%	2035-10-28	Active	116B01	HD03382	Q2021_0184 - C1Q00353
Dawson	YD145261	OGI	161	Fox Exploration Limited - 100%	2035-10-28	Active	116B01	HD03382	Q2021_0184 - C1Q00353
Dawson	YD145262	OGI	162	Fox Exploration Limited - 100%	2035-10-28	Active	116B01	HD03382	Q2021_0184 - C1Q00353
Dawson	YD145263	OGI	163	Fox Exploration Limited - 100%	2035-10-28	Active	116B01	HD03382	Q2021_0184 - C1Q00353
Dawson	YD145264	OGI	164	Fox Exploration Limited - 100%	2035-10-28	Active	116B01	HD03382	Q2021_0184 - C1Q00353
Dawson	YD145269	OGI	169	Fox Exploration Limited - 100%	2035-10-28	Active	116B01	HD03382	Q2021_0184 - C1Q00353
Dawson	YD145271	OGI	171	Fox Exploration Limited - 100%	2035-10-28	Active	116B01	HD03382	Q2021_0184 - C1Q00353
Dawson	YD145273	OGI	173	Fox Exploration Limited - 100%	2035-10-28	Active	116B01	HD03382	Q2021_0184 - C1Q00353
Dawson	YD145275	OGI	175	Fox Exploration Limited - 100%	2035-10-28	Active	116B01	HD03382	Q2021_0184 - C1Q00353
Dawson	YD145277	OGI	177	Fox Exploration Limited - 100%	2035-10-28	Active	116B01	HD03382	Q2021_0184 - C1Q00353
Dawson	YD145279	OGI	179	Fox Exploration Limited - 100%	2035-10-28	Active	116B01	HD03382	Q2021_0184 - C1Q00353
Dawson	YD145281	OGI	181	Fox Exploration Limited - 100%	2035-10-28	Active	116B01	HD03382	Q2021_0184 - C1Q00353
Dawson	YD145283	OGI	183	Fox Exploration Limited - 100%	2035-10-28	Active	116B01	HD03382	Q2021_0184 - C1Q00353

Appendix II Soil and Rock Sample Results and Descriptions

Sample	Type	Zone	Easting	Northing	Elevation	Depth (cm)	Horizon	Slope	Colour	Texture	Zn (ppm)	Ag (ppm)	As (ppm)	Au (ppb)	Bi (ppm)
2203451	Soil	07N	628800	7116550	1127	90	C	Steep	Light Brown	Silt	89	0.1	12.4	6.6	0.2
2203452	Soil	07N	628776	7116550	1133	70	C	Steep	Light Brown	Silt	90	0.1	13.5	2.5	0.2
2203453	Soil	07N	628751	7116550	1157	60	C	Steep	Chocolate Brown	Silt	72	0.05	11.8	4.2	0.2
2203454	Soil	07N	628726	7116549	1164	60	C	Steep	Reddish Yellow	Silt	71	0.05	11.8	1.1	0.2
2203455	Soil	07N	628701	7116550	1166	70	C	Steep	Reddish Yellow	Silt	65	0.05	14.8	2.5	0.2
2203456	Soil	07N	628676	7116551	1182	70	C	Steep	Chocolate Brown	Silt	78	0.05	10.4	2.4	0.2
2203457	Soil	07N	628650	7116550	1176	60	C	Steep	Reddish Yellow	Silt	101	0.05	15.1	1.5	0.2
2203458	Soil	07N	628625	7116550	1181	70	C	Steep	Reddish Yellow	Silt	134	0.05	13.8	1.9	0.2
2203459	Soil	07N	628578	7116550	1164	60	C	Steep	Reddish Yellow	Silt	74	0.05	12.8	7.7	0.2
2203460	Soil	07N	628528	7116549	1139	110	C	Steep	Dark Grey Black	Silt	218	0.3	10	10.9	0.2
2203461	Soil	07N	628478	7116550	1102	80	C	Steep	Dark Grey Black	Silt	88	0.2	6.2	3.8	0.2
2203462	Soil	07N	628427	7116549	1073	80	C	Steep	Grey	Gravel	202	0.6	11.7	7.1	0.2
2203463	Soil	07N	628377	7116550	1042	80	C	Steep	Grey	Gravel	123	0.6	9	5.7	0.2
2203464	Soil	07N	628327	7116549	1029	60	B/C	Steep	Grey	Clay	109	0.6	5.8	7.7	0.1
2203465	Soil	07N	628276	7116550	1009	80	C	Steep	Chocolate Brown	Clay	102	0.5	5.4	6.9	0.1
2203466	Soil	07N	628226	7116549	995	80	B/C	Steep	Dark Brown	Silt	89	0.5	4.3	7.1	0.1
2203467	Soil	07N	628176	7116549	982	70	B/C	Steep	Chocolate Brown	Silt	92	0.4	6.2	5.9	0.1
2203468	Soil	07N	628126	7116551	971	70	B	Steep	Dark Brown	Silt	82	0.5	2.7	7.3	0.05
2203469	Soil	07N	628077	7116549	977	110	C	Steep	Grey	Gravel	213	1.6	8.1	12.8	0.2
2203470	Soil	07N	628026	7116550	987	70	C	Steep	Bluish Grey	Gravel	115	0.6	6.5	9	0.1
2203471	Soil	07N	627976	7116551	965	110	C	Steep	Light Brown	Silt	60	0.3	4.4	4.7	0.1
2203472	Soil	07N	627927	7116551	956	70	C	Steep	Light Brown	Clay	61	0.2	4.7	3.6	0.1
2203473	Soil	07N	627876	7116550	986	60	C	Steep	Chocolate Brown	Gravel	86	0.2	9.3	4.5	0.2
2203474	Soil	07N	627826	7116550	987	90	C	Steep	Chocolate Brown	Gravel	95	0.4	7.5	6.7	0.1
2203476	Soil	07N	627800	7116500	989	60	C	Steep	Chocolate Brown	Gravel	95	0.2	8.7	6.9	0.2
2203477	Soil	07N	627826	7116497	993	80	C	Steep	Bluish Grey	Gravel	102	0.3	3.8	8.7	0.2
2203478	Soil	07N	627850	7116498	1010	70	C	Steep	Chocolate Brown	Gravel	115	0.1	5.1	4.9	0.1
2203479	Soil	07N	627798	7116601	940	70	B/C	Steep	Dark Brown	Silt	101	0.7	5	9.6	0.2
2203480	Soil	07N	627824	7116599	966	80	C	Steep	Chocolate Brown	Silt	151	0.7	11.2	8.6	0.2
2203481	Soil	07N	627849	7116600	979	80	C	Steep	Chocolate Brown	Gravel	118	0.3	13.7	6.2	0.2
2203482	Soil	07N	627874	7116599	978	60	C	Steep	Reddish Yellow	Gravel	100	0.3	9.7	4.4	0.2
2203483	Soil	07N	627899	7116598	969	60	C	Steep	Chocolate Brown	Gravel	150	0.4	12.6	7.6	0.1
2203484	Soil	07N	627924	7116601	956	80	C	Steep	Dark Brown	Silt	81	0.5	9.6	10.7	0.2
2203485	Soil	07N	627949	7116599	952	70	B	Steep	Dark Brown	Clay	106	0.5	2.4	6.8	0.1
2203486	Soil	07N	627974	7116600	962	60	C	Steep	Chocolate Brown	Gravel	101	0.1	9.1	2.8	0.1
2203487	Soil	07N	627999	7116601	960	110	C	Steep	Bluish Grey	Gravel	316	0.9	15.6	9.9	0.2
2203488	Soil	07N	628025	7116598	959	90	C	Steep	Grey	Gravel	136	0.8	12.5	10.6	0.2
2203489	Soil	07N	628800	7116698	1161	60	C	Steep	Chocolate Brown	Silt	133	0.6	11.6	10.8	0.2
2203490	Soil	07N	628777	7116700	1170	70	C	Steep	Dark Brown	Gravel	162	1.3	9.9	19.9	0.2
2203491	Soil	07N	628727	7116701	1178	70	C	Steep	Dark Grey Black	Gravel	116	0.3	11	8.1	0.2
2203492	Soil	07N	628677	7116701	1159	60	C	Steep	Dark Grey Black	Gravel	260	1.5	5.3	13.1	0.1
2203493	Soil	07N	628627	7116699	1129	90	C	Steep	Chocolate Brown	Silt	125	0.3	10.1	15.8	0.1
2203494	Soil	07N	628577	7116700	1119	60	C	Steep	Chocolate Brown	Gravel	270	0.1	8.5	5.6	0.3
2203495	Soil	07N	628527	7116699	1093	70	C	Steep	Reddish Yellow	Silt	97	0.05	10.8	3.5	0.2

Sample	Type	Zone	Easting	Northing	Elevation	Depth (cm)	Horizon	Slope	Colour	Texture	Zn (ppm)	Ag (ppm)	As (ppm)	Au (ppb)	Bi (ppm)
2203496	Soil	07N	628477	7116699	1088	70	C	Steep	Reddish Yellow	Silt	78	0.05	12.2	4.3	0.1
2203497	Soil	07N	628427	7116699	1090	70	C	Steep	Reddish Yellow	Gravel	140	0.05	6.2	18.3	0.2
2203498	Soil	07N	628379	7116699	1068	80	C	Steep	Reddish Yellow	Silt	108	0.2	10.7	10.6	0.2
2203499	Soil	07N	628327	7116700	1077	60	C	Steep	Chocolate Brown	Silt	110	0.1	10.6	6.4	0.2
2203501	Soil	07N	628277	7116700	1053	90	C	Steep	Chocolate Brown	Silt	80	0.05	8.7	18.5	0.05
2203502	Soil	07N	628226	7116700	1066	70	C	Steep	Chocolate Brown	Gravel	263	2.3	12.5	7.5	0.2
2203503	Soil	07N	628176	7116700	1044	70	C	Steep	Chocolate Brown	Gravel	93	0.7	9.2	12.4	0.2
2203504	Soil	07N	628126	7116700	1017	100	C	Steep	Reddish Yellow	Clay	65	0.05	12.1	6.6	0.1
2203505	Soil	07N	628076	7116701	1000	60	C	Steep	Reddish Yellow	Gravel	156	0.05	10.4	13.7	0.3
2203506	Soil	07N	628025	7116699	972	90	C	Steep	Light Brown	Silt	74	0.05	10.9	4.7	0.05
2203507	Soil	07N	627975	7116699	956	70	C	Steep	Chocolate Brown	Silt	117	0.05	10	4.1	0.2
2203508	Soil	07N	627925	7116699	944	70	C	Flat	Dark Brown	Silt	96	0.1	7.7	5.3	0.1
2203509	Soil	07N	627875	7116699	944	70	C	Flat	Bluish Grey	Clay	129	0.4	5.1	7.8	0.1
2203510	Soil	07N	627825	7116700	938	70	C	Subtle Slope	Light Brown	Clay	77	0.2	9.8	5.8	0.05
2203511	Soil	07N	627800	7116650	951	70	C	Pronounced	Dark Grey Black	Gravel	303	1.9	7.5	31.4	0.1
2203512	Soil	07N	627825	7116650	962	70	C	Steep	Dark Grey Black	Gravel	399	1.8	10.6	19.4	0.05
2203513	Soil	07N	627850	7116650	960	60	C	Steep	Dark Grey Black	Gravel	204	1.7	5.4	10	0.05
2203514	Soil	07N	627874	7116650	946	50	B	Steep	Dark Grey Black	Gravel	86	1	3.3	9.1	0.05
2203515	Soil	07N	627900	7116648	953	50	B/C	Pronounced	Dark Grey Black	Gravel	169	1.2	4.4	9.5	0.05
2203516	Soil	07N	627924	7116651	952	60	C	Subtle Slope	Grey	Clay	105	0.4	5.4	8.8	0.05
2203517	Soil	07N	627949	7116650	933	70	C	Subtle Slope	Light Brown	Clay	99	0.1	10.2	6.2	0.1
2203518	Soil	07N	627975	7116650	943	110	C	Subtle Slope	Chocolate Brown	Clay	118	0.3	12.8	6.9	0.1
2203519	Soil	07N	628000	7116650	944	70	C	Subtle Slope	Light Brown	Clay	116	0.2	10.5	6.1	0.1
2203520	Soil	07N	628299	7118401	1088	50	C	Steep	Chocolate Brown	Gravel	75	0.2	10.5	2.7	0.2
2203521	Soil	07N	628348	7118401	1097	60	C	Steep	Chocolate Brown	Silt	98	0.05	10.7	3.1	0.2
2203522	Soil	07N	628399	7118400	1106	60	C	Steep	Light Brown	Silt	76	0.1	8.5	2.8	0.05
2203523	Soil	07N	628449	7118400	1135	50	C	Steep	Reddish Yellow	Silt	51	0.05	11.1	7.3	0.2
2203524	Soil	07N	628499	7118400	1136	50	C	Pronounced	Reddish Yellow	Silt	72	0.1	8.1	3.5	0.05
2203526	Soil	07N	628549	7118403	1134	70	C	Steep	Reddish Yellow	Silt	82	0.2	10.2	6	0.3
2203527	Soil	07N	628600	7118400	1099	90	C	Steep	Chocolate Brown	Silt	81	0.5	3.6	3.6	0.1
2203528	Soil	07N	628651	7118401	1074	80	C	Steep	Chocolate Brown	Silt	65	0.1	3.5	3.2	0.05
2203529	Soil	07N	628699	7118399	1049	70	C	Steep	Chocolate Brown	Silt	64	0.05	1.6	3	0.05
2203530	Soil	07N	628749	7118398	1038	60	C	Steep	Chocolate Brown	Gravel	108	0.2	4.7	1.7	0.2
2203531	Soil	07N	628800	7118401	995	70	C	Steep	Reddish Yellow	Clay	67	0.05	8.4	2.1	0.3
2203532	Soil	07N	628800	7118301	981	80	B/C	Steep	Dark Brown	Silt	60	0.2	2.7	3.2	0.05
2203533	Soil	07N	628751	7118303	1014	90	C	Steep	Dark Grey Black	Silt	90	0.4	8.4	5.9	0.1
2203534	Soil	07N	628700	7118302	1035	80	C	Steep	Dark Brown	Silt	103	0.4	6.9	6.2	0.1
2203535	Soil	07N	628650	7118302	1057	80	C	Steep	Light Brown	Silt	66	0.4	7.9	3.8	0.2
2203536	Soil	07N	628600	7118299	1098	60	C	Steep	Light Brown	Gravel	75	0.3	9.7	2.6	0.2
2203537	Soil	07N	628550	7118300	1111	70	C	Steep	Light Brown	Silt	135	0.2	9	4.3	0.1
2203538	Soil	07N	628500	7118300	1144	50	C	Steep	Chocolate Brown	Silt	497	0.7	21.4	57	0.2
2203539	Soil	07N	628450	7118300	1133	50	B/C	Steep	Chocolate Brown	Gravel	81	0.05	7.6	0.25	0.1
2203540	Soil	07N	628399	7118301	1136	70	B/C	Steep	Dark Grey Black	Silt	22	0.1	2.5	2.3	0.05
2203541	Soil	07N	628350	7118300	1124	70	C	Subtle Slope	Chocolate Brown	Silt	55	0.05	8.2	1.7	0.1

Sample	Type	Zone	Easting	Northing	Elevation	Depth (cm)	Horizon	Slope	Colour	Texture	Zn (ppm)	Ag (ppm)	As (ppm)	Au (ppb)	Bi (ppm)
2203542	Soil	07N	628299	7118300	1113	70	C	Subtle Slo	Chocolate Brown	Clay	75	0.05	12.2	3.5	0.2
2203543	Soil	07N	628252	7118299	1096	70	C	Steep	Light Brown	Silt	80	0.1	10.3	3.1	0.1
2203544	Soil	07N	628202	7118301	1066	60	C	Steep	Chocolate Brown	Silt	68	0.05	9.3	1.6	0.2
2203545	Soil	07N	628150	7118300	1050	60	B/C	Steep	Reddish Yellow	Silt	45	0.1	10.4	0.25	0.2
2203546	Soil	07N	628101	7118300	1034	60	B/C	Steep	Chocolate Brown	Silt	74	0.05	8.4	1.3	0.05
2203547	Soil	07N	628001	7118301	998	70	B	Steep	Dark Grey Black	Silt	36	0.1	2	2.4	0.05
2203548	Soil	07N	627900	7118299	1054	60	B	Steep	Dark Grey Black	Silt	72	0.2	4.5	2	0.05
2203549	Soil	07N	627850	7118298	1072	60	B	Steep	Dark Grey Black	Silt	36	0.1	4.1	2.5	0.05
2203551	Soil	07N	627801	7118300	1104	70	C	Steep	Chocolate Brown	Silt	61	0.05	7.6	3.9	0.1
2203552	Soil	07N	628801	7117078	1231	50	C	Steep	Reddish Yellow	Silt	45	0.05	8.2	1.5	0.2
2203553	Soil	07N	628751	7117075	1247	70	C	Steep	Reddish Yellow	Silt	52	0.05	10.6	4.8	0.2
2203554	Soil	07N	628701	7117075	1247	80	C	Steep	Reddish Yellow	Silt	67	0.05	12.6	2.2	0.2
2203555	Soil	07N	628650	7117074	1240	70	C	Steep	Reddish Yellow	Silt	62	0.05	11.4	4	0.2
2203556	Soil	07N	628601	7117075	1240	60	B/C	Steep	Reddish Yellow	Gravel	91	0.05	10.5	2.6	0.2
2203557	Soil	07N	628550	7117076	1198	80	C	Steep	Chocolate Brown	Gravel	70	0.2	11.1	2.8	0.2
2203558	Soil	07N	628501	7117073	1167	90	C	Steep	Light Brown	Sand	49	0.05	9.7	3	0.1
2203559	Soil	07N	628450	7117071	1140	60	B/C	Steep	Chocolate Brown	Gravel	154	0.2	17.1	3.2	0.3
2203560	Soil	07N	628401	7117077	1115	90	C	Steep	Chocolate Brown	Silt	50	0.3	23.7	5.6	0.3
2203561	Soil	07N	628350	7117076	1114	50	B/C	Steep	Reddish Yellow	Silt	61	1.5	20.8	5.9	0.2
2203562	Soil	07N	628300	7117075	1130	60	C	Steep	Light Brown	Gravel	87	0.05	12.7	1.6	0.2
2203563	Soil	07N	628252	7117075	1115	70	C	Steep	Reddish Brown	Silt	77	0.1	11.4	1.1	0.2
2203564	Soil	07N	628201	7117075	1043	100	C	Steep	Chocolate Brown	Silt	66	0.05	11.2	4	0.2
2203565	Soil	07N	628151	7117073	1005	70	B/C	Steep	Chocolate Brown	Silt	48	0.5	10.3	5.9	0.2
2203566	Soil	07N	628101	7117073	1058	60	C	Steep	Reddish Brown	Silt	112	0.1	9.8	1.6	0.2
2203567	Soil	07N	628051	7117074	1071	80	C	Steep	Reddish Brown	Silt	92	0.1	12.5	0.25	0.2
2203568	Soil	07N	628000	7117075	1100	60	B/C	Steep	Reddish Yellow	Silt	120	0.5	12.4	2.7	0.2
2203569	Soil	07N	627951	7117074	1069	60	B/C	Steep	Reddish Yellow	Clay	70	0.05	12	3.2	0.2
2203570	Soil	07N	627901	7117075	1035	80	C	Steep	Reddish Yellow	Silt	69	0.1	8.4	4.3	0.2
2203571	Soil	07N	627850	7117075	1046	60	B/C	Steep	Reddish Yellow	Gravel	197	1.5	55.8	10.1	0.4
2203572	Soil	07N	627801	7117074	1035	90	B/C	Pronounc	Dark Grey Black	Silt	71	0.4	4.8	3.9	0.1
2203573	Soil	07N	627800	7117201	1095	70	C	Steep	Reddish Brown	Silt	128	0.5	9.6	2.3	0.2
2203574	Soil	07N	627849	7117202	1110	60	B/C	Steep	Reddish Yellow	Silt	212	0.3	7.6	2.5	0.2
2203601	Soil	07N	627900	7117203	1120	90	C	Steep	Light Brown	Silt	109	0.05	11.9	4.4	0.2
2203602	Soil	07N	627950	7117201	1130	70	C	Steep	Light Brown	Silt	82	0.1	10.3	10.4	0.2
2203603	Soil	07N	628000	7117201	1143	80	C	Steep	Reddish Yellow	Silt	69	0.2	9.8	8.7	0.2
2203604	Soil	07N	628050	7117201	1144	60	B/C	Steep	Reddish Brown	Silt	76	0.2	10.3	1.3	0.2
2203605	Soil	07N	628100	7117200	1133	80	C	Steep	Light Brown	Silt	84	0.4	10.1	7.3	0.2
2203606	Soil	07N	628150	7117197	1112	70	C	Steep	Reddish Yellow	Silt	77	0.3	9.4	3.8	0.2
2203607	Soil	07N	628201	7117203	1124	60	C	Steep	Light Brown	Silt	81	0.6	8.9	2.5	0.2
2203608	Soil	07N	628250	7117199	1131	50	B/C	Steep	Reddish Yellow	Gravel	78	0.05	11.4	17.8	0.2
2203609	Soil	07N	628300	7117200	1160	70	C	Steep	Reddish Brown	Silt	66	0.1	10.4	9.3	0.2
2203610	Soil	07N	628349	7117199	1204	40	B	Steep	Reddish Yellow	Silt	83	0.1	10.4	4.4	0.2
2203611	Soil	07N	628399	7117201	1244	70	C	Steep	Reddish Yellow	Silt	66	0.3	9.7	2.7	0.2
2203612	Soil	07N	628450	7117199	1205	70	C	Steep	Light Brown	Clay	72	0.05	11	8.2	0.2

Sample	Type	Zone	Easting	Northing	Elevation	Depth (cm)	Horizon	Slope	Colour	Texture	Zn (ppm)	Ag (ppm)	As (ppm)	Au (ppb)	Bi (ppm)
2203613	Soil	07N	628499	7117202	1216	70	C	Steep	Reddish Yellow	Silt	87	0.05	10.8	5.8	0.2
2203614	Soil	07N	628549	7117201	1223	100	C	Steep	Reddish Yellow	Silt	68	0.1	10.6	3.4	0.2
2203615	Soil	07N	628599	7117201	1249	40	B	Steep	Chocolate Brown	Gravel	88	0.4	10.9	3.1	0.2
2203616	Soil	07N	628650	7117201	1282	50	B	Pronound	Chocolate Brown	Gravel	63	0.05	11.6	2.6	0.2
2203617	Soil	07N	628650	7117600	1108	60	B/C	Steep	Grey	Gravel	154	0.7	6.3	6.3	0.2
2203618	Soil	07N	628700	7117600	1096	60	B	Steep	Dark Brown	Silt	62	0.05	6.3	1.5	0.2
2203619	Soil	07N	628750	7117599	1079	80	B/C	Steep	Dark Grey Black	Silt	93	0.6	17.5	7.9	0.3
2203620	Soil	07N	628800	7117601	1072	110	B/C	Steep	Dark Grey Black	Silt	34	1	12.4	7.7	0.2
2203621	Soil	07N	628801	7117500	1102	80	B/C	Steep	Chocolate Brown	Gravel	72	0.3	10.2	3	0.2
2203622	Soil	07N	628752	7117499	1129	70	C	Steep	Chocolate Brown	Gravel	87	0.05	9.4	2.8	0.3
2203623	Soil	07N	628702	7117499	1133	70	B/C	Steep	Chocolate Brown	Gravel	234	0.6	10.2	11.8	0.2
2203624	Soil	07N	628651	7117500	1157	60	B/C	Steep	Chocolate Brown	Gravel	58	0.1	9.7	2.6	0.4
2203626	Soil	07N	628602	7117501	1186	80	C	Steep	Reddish Yellow	Gravel	109	0.2	12.1	4.7	0.2
2203627	Soil	07N	628551	7117501	1179	70	C	Steep	Chocolate Brown	Silt	95	0.2	10.6	3.4	0.2
2203628	Soil	07N	628501	7117502	1215	60	B	Steep	Chocolate Brown	Silt	108	0.4	11.6	8.4	0.2
2203629	Soil	07N	628451	7117500	1262	50	B/C	Steep	Chocolate Brown	Gravel	56	0.1	13.4	1.9	0.3
2203630	Soil	07N	628400	7117499	1216	70	B/C	Steep	Chocolate Brown	Silt	75	0.05	10.3	3.5	0.2
2203631	Soil	07N	628351	7117498	1193	60	C	Steep	Chocolate Brown	Sand	94	0.05	10.3	2	0.1
2203632	Soil	07N	628300	7117500	1173	70	C	Steep	Light Brown	Clay	69	0.05	10	5	0.1
2203633	Soil	07N	628251	7117499	1166	70	C	Steep	Light Brown	Sand	55	0.05	8.1	2.8	0.1
2203634	Soil	07N	628202	7117500	1149	70	C	Steep	Chocolate Brown	Silt	72	0.2	8.5	3.2	0.1
2203635	Soil	07N	628151	7117501	1143	70	C	Steep	Light Brown	Silt	95	0.1	8.3	3.7	0.1
2203636	Soil	07N	628102	7117500	1151	60	C	Steep	Light Brown	Silt	98	0.2	9.5	8.4	0.1
2203637	Soil	07N	628051	7117500	1161	60	C	Steep	Chocolate Brown	Silt	93	0.2	8.5	7.7	0.05
2203638	Soil	07N	628001	7117499	1160	60	C	Pronound	Chocolate Brown	Silt	113	0.3	7.9	12.9	0.05
2203639	Soil	07N	627951	7117501	1158	90	C	Steep	Chocolate Brown	Sand	74	0.2	9.6	4.4	0.1
2203640	Soil	07N	627901	7117500	1152	60	C	Pronound	Chocolate Brown	Silt	56	0.05	7.9	2.6	0.05
2203641	Soil	07N	627850	7117499	1146	70	C	Steep	Chocolate Brown	Silt	66	0.05	9.2	1.7	0.1
2203642	Soil	07N	627799	7117500	1147	70	C	Steep	Chocolate Brown	Silt	179	0.2	7.3	3	0.05
2203643	Soil	07N	627799	7117599	1120	70	B	Steep	Dark Brown	Silt	56	0.3	3.1	2.9	0.05
2203644	Soil	07N	627849	7117601	1089	70	B/C	Steep	Dark Brown	Silt	74	0.2	7.3	7.7	0.1
2203645	Soil	07N	627899	7117599	1112	70	C	Steep	Chocolate Brown	Silt	65	0.1	7.2	2.7	0.05
2203646	Soil	07N	627949	7117600	1117	70	B/C	Pronound	Light Brown	Silt	70	0.3	6.3	5	0.05
2203647	Soil	07N	627999	7117599	1125	60	B/C	Steep	Chocolate Brown	Silt	71	0.1	7.6	4.8	0.05
2203648	Soil	07N	628049	7117600	1121	60	C	Pronound	Chocolate Brown	Silt	59	0.05	6.2	3.3	0.05
2203649	Soil	07N	628100	7117600	1113	70	C	Steep	Chocolate Brown	Silt	75	0.4	6.8	4.6	0.1
2203651	Soil	07N	628150	7117601	1120	70	C	Pronound	Chocolate Brown	Silt	64	0.2	7.5	5.5	0.05
2203652	Soil	07N	628199	7117601	1128	70	C	Steep	Chocolate Brown	Silt	54	1	16.1	8.4	0.1
2203653	Soil	07N	628250	7117600	1132	70	C	Steep	Grey	Silt	57	0.4	5.3	4	0.05
2203654	Soil	07N	628300	7117601	1152	70	C	Steep	Light Brown	Silt	67	0.1	7.5	5.1	0.05
2203655	Soil	07N	628349	7117603	1156	60	C	Steep	Chocolate Brown	Silt	70	0.2	9.3	3.7	0.1
2203656	Soil	07N	628399	7117603	1181	60	C	Steep	Chocolate Brown	Silt	119	0.05	10.6	5	0.1
2203657	Soil	07N	628449	7117602	1183	60	B/C	Steep	Chocolate Brown	Gravel	149	0.8	14	4.1	0.1
2203658	Soil	07N	628499	7117600	1168	90	C	Steep	Chocolate Brown	Gravel	142	0.3	8.7	8.2	0.1

Sample	Type	Zone	Easting	Northing	Elevation	Depth (cm)	Horizon	Slope	Colour	Texture	Zn (ppm)	Ag (ppm)	As (ppm)	Au (ppb)	Bi (ppm)
2203659	Soil	07N	628549	7117600	1145	70	B/C	Steep	Chocolate Brown	Gravel	163	0.2	11.2	3.6	0.2
2203660	Soil	07N	628598	7117602	1155	60	B/C	Steep	Dark Brown	Gravel	252	0.3	10.8	5.7	0.2
2205451	Soil	07N	628800	7116600	1154	120	C	Pronound	Chocolate Brown	Silt	92	0.4	9.5	10.7	0.2
2205452	Soil	07N	628776	7116601	1160	80	C	Pronound	Chocolate Brown	Sand	237	0.2	8.2	6.9	0.1
2205453	Soil	07N	628751	7116601	1154	100	C	Pronound	Chocolate Brown	Sand	151	0.2	11.2	5.1	0.1
2205454	Soil	07N	628726	7116600	1168	100	C	Pronound	Grey	Silt	179	0.3	12.4	6.4	0.2
2205455	Soil	07N	628701	7116600	1177	80	C	Pronound	Bluish Grey	Silt	114	0.2	10.6	6	0.2
2205456	Soil	07N	628676	7116600	1186	40	C	Subtle Slq	Chocolate Brown	Sand	88	0.8	13	4.5	0.2
2205457	Soil	07N	628650	7116600	1181	40	B/C	Subtle Slq	Chocolate Brown	Silt	134	0.6	8.5	3.3	0.3
2205458	Soil	07N	628626	7116600	1170	120	B/C	Subtle Slq	Chocolate Brown	Silt	72	0.05	12.1	5	0.1
2205459	Soil	07N	628601	7116600	1166	40	B/C	Pronound	Chocolate Brown	Sand	92	0.1	12.9	1.2	0.2
2205460	Soil	07N	628576	7116600	1147	80	C	Steep	Dark Grey Black	Sand	343	2.2	10.1	18.4	0.1
2205461	Soil	07N	628551	7116600	1139	120	C	Steep	Grey	Sand	184	0.6	13.1	8.4	0.2
2205462	Soil	07N	628525	7116601	1121	70	C	Steep	Grey	Sand	127	0.4	8.9	8.8	0.1
2205463	Soil	07N	628500	7116600	1108	90	C	Steep	Grey	Sand	138	0.4	10.3	5	0.1
2205464	Soil	07N	628475	7116600	1098	90	C	Steep	Dark Grey Black	Gravel	454	1.1	23.2	13.3	0.2
2205465	Soil	07N	628450	7116600	1087	120	C	Pronound	Dark Grey Black	Sand	280	1.5	23.7	13.5	0.1
2205466	Soil	07N	628425	7116600	1076	100	C	Steep	Chocolate Brown	Sand	108	0.4	7.6	11.4	0.2
2205467	Soil	07N	628401	7116600	1061	110	C	Pronound	Grey	Sand	230	0.7	15.1	10	0.1
2205468	Soil	07N	628375	7116600	1056	90	C	Pronound	Grey	Silt	115	0.5	7.7	6.5	0.1
2205469	Soil	07N	628350	7116600	1050	110	B/C	Pronound	Chocolate Brown	Silt	114	0.9	4.7	12.8	0.1
2205470	Soil	07N	628325	7116600	1042	90	C	Pronound	Chocolate Brown	Silt	111	0.5	5	5.7	0.05
2205471	Soil	07N	628300	7116600	1035	60	B/C	Flat	Grey	Silt	116	0.6	6.2	8.3	0.1
2205472	Soil	07N	628274	7116600	1024	70	B/C	Subtle Slq	Grey	Silt	102	0.6	3.9	7.4	0.1
2205473	Soil	07N	628251	7116600	1014	50	B/C	Subtle Slq	Grey	Silt	93	0.4	7.9	7.1	0.05
2205474	Soil	07N	628175	7116600	994	120	C	Subtle Slq	Dark Grey Black	Silt	210	1.3	7.9	8.3	0.05
2205476	Soil	07N	628224	7116600	1014	60	B/C	Subtle Slq	Grey	Silt	135	1	6	13.6	0.1
2205477	Soil	07N	628201	7116600	1000	80	B/C	Subtle Slq	Grey	Silt	177	1.1	4.5	11.9	0.1
2205478	Soil	07N	628150	7116600	986	60	B	Subtle Slq	Dark Brown	Silt	126	1.1	1.4	16.8	0.05
2205479	Soil	07N	628124	7116600	975	70	B/C	Subtle Slq	Dark Grey Black	Silt	183	0.8	8	9.9	0.05
2205480	Soil	07N	628100	7116601	969	60	B/C	Subtle Slq	Grey	Silt	130	0.6	8.3	9.8	0.1
2205481	Soil	07N	628074	7116601	960	90	B	Subtle Slq	Grey	Silt	96	0.2	9.1	4.1	0.05
2205482	Soil	07N	628050	7116599	954	60	B/C	Subtle Slq	Dark Grey Black	Silt	99	0.4	6.8	4.4	0.2
2205483	Soil	07N	628800	7116750	1189	90	C	Pronound	Chocolate Brown	Sand	80	0.1	8.6	8.6	0.1
2205484	Soil	07N	628777	7116750	1197	70	C	Pronound	Bluish Grey	Sand	193	0.2	7.7	23.6	0.1
2205485	Soil	07N	628751	7116750	1190	90	B/C	Subtle Slq	Chocolate Brown	Silt	86	0.05	12	3.5	0.2
2205486	Soil	07N	628726	7116750	1191	50	B/C	Subtle Slq	Bluish Grey	Sand	301	0.4	10.7	14.9	0.2
2205487	Soil	07N	628701	7116750	1181	80	C	Subtle Slq	Chocolate Brown	Sand	519	0.8	12.6	20.1	0.1
2205488	Soil	07N	628675	7116750	1179	80	C	Pronound	Chocolate Brown	Sand	82	0.05	7	4.5	0.1
2205489	Soil	07N	628650	7116750	1172	70	C	Pronound	Chocolate Brown	Sand	86	0.05	8.4	4.1	0.3
2205490	Soil	07N	628625	7116750	1169	80	C	Steep	Chocolate Brown	Sand	102	0.1	8.2	4.4	0.3
2205491	Soil	07N	628600	7116750	1169	50	C	Pronound	Chocolate Brown	Sand	70	0.05	6.7	0.5	0.1
2205492	Soil	07N	628575	7116750	1169	60	C	Pronound	Chocolate Brown	Sand	51	0.05	6.4	0.9	0.2
2205493	Soil	07N	628551	7116750	1158	70	C	Pronound	Chocolate Brown	Sand	54	0.05	6.5	3.2	0.2

Sample	Type	Zone	Easting	Northing	Elevation	Depth (cm)	Horizon	Slope	Colour	Texture	Zn (ppm)	Ag (ppm)	As (ppm)	Au (ppb)	Bi (ppm)
2205494	Soil	07N	628525	7116750	1148	60	C	Steep	Chocolate Brown	Gravel	74	0.05	12.4	3.7	0.2
2205495	Soil	07N	628500	7116750	1138	80	B/C	Steep	Chocolate Brown	Sand	84	0.05	8.7	3.7	0.1
2205496	Soil	07N	628475	7116749	1126	80	C	Pronound	Dark Brown	Sand	58	0.1	5.8	2	0.1
2205497	Soil	07N	628450	7116750	1119	60	B/C	Steep	Chocolate Brown	Gravel	54	0.2	10.9	3.3	0.4
2205498	Soil	07N	628425	7116750	1111	50	B/C	Steep	Chocolate Brown	Sand	77	0.1	8.8	3.4	0.1
2205499	Soil	07N	628350	7116750	1089	80	C	Steep	Chocolate Brown	Sand	76	0.05	6.1	4.4	0.1
2205501	Soil	07N	628400	7116750	1103	50	B/C	Steep	Dark Brown	Sand	48	0.05	11.8	1.6	0.2
2205502	Soil	07N	628375	7116750	1096	60	B/C	Steep	Chocolate Brown	Gravel	71	0.1	10.6	2.9	0.2
2205503	Soil	07N	628325	7116750	1077	70	C	Steep	Chocolate Brown	Sand	48	0.05	4.6	0.25	0.1
2205504	Soil	07N	628300	7116750	1069	60	B/C	Steep	Chocolate Brown	Sand	50	0.05	11.4	1.5	0.3
2205505	Soil	07N	627800	7116750	901	80	C	Subtle Sl	Dark Grey Black	Sand	551	0.7	11.5	12.4	0.1
2205506	Soil	07N	627823	7116750	911	60	B/C	Flat	Grey	Sand	256	0.3	6.1	7.4	0.1
2205507	Soil	07N	627850	7116750	909	80	B/C	Flat	Grey	Silt	111	0.4	3	6.7	0.05
2205508	Soil	07N	627875	7116749	923	80	C	Subtle Sl	Bluish Grey	Sand	229	1	8.9	9.3	0.2
2205509	Soil	07N	627899	7116750	945	70	B/C	Subtle Sl	Dark Grey Black	Sand	229	0.9	5.3	12.9	0.1
2205510	Soil	07N	627925	7116750	957	70	B/C	Pronound	Dark Blue Black	Sand	426	0.8	10.9	26.3	0.2
2205511	Soil	07N	627950	7116749	972	110	B/C	Steep	Dark Grey Black	Silt	362	1.8	10.8	14.2	0.1
2205512	Soil	07N	627973	7116750	994	110	B/C	Steep	Chocolate Brown	Silt	67	0.05	9.4	9	0.1
2205513	Soil	07N	627999	7116750	1004	50	B/C	Subtle Sl	Chocolate Brown	Silt	83	0.05	8.9	5.4	0.2
2205514	Soil	07N	628024	7116749	1017	70	B/C	Pronound	Chocolate Brown	Silt	68	0.05	10.3	2.6	0.2
2205515	Soil	07N	628351	7118200	1118	50	B/C	Flat	Chocolate Brown	Silt	53	0.05	11.7	0.25	0.2
2205516	Soil	07N	628302	7118200	1099	50	B/C	Subtle Sl	Chocolate Brown	Silt	86	0.1	6.9	2.3	0.05
2205517	Soil	07N	628252	7118200	1092	70	B/C	Subtle Sl	Grey	Silt	95	0.3	9.6	5.8	0.05
2205518	Soil	07N	628201	7118199	1076	40	B/C	Subtle Sl	Chocolate Brown	Silt	87	0.1	8.5	3.6	0.05
2205519	Soil	07N	628151	7118200	1062	50	B/C	Pronound	Chocolate Brown	Silt	73	0.05	8.1	3.9	0.1
2205520	Soil	07N	628101	7118200	1034	60	B/C	Pronound	Chocolate Brown	Silt	50	0.05	9	1.1	0.2
2205521	Soil	07N	628052	7118200	1010	60	B/C	Pronound	Chocolate Brown	Silt	76	0.2	8.9	4.5	0.2
2205522	Soil	07N	628001	7118200	990	60	B/C	Pronound	Chocolate Brown	Sand	150	0.2	8.9	2.8	0.2
2205523	Soil	07N	627951	7118199	1031	60	B/C	Steep	Chocolate Brown	Gravel	254	0.9	27.6	5.2	0.2
2205524	Soil	07N	628199	7118100	1070	80	B/C	Pronound	Chocolate Brown	Silt	149	0.8	8.8	3.3	0.2
2205526	Soil	07N	627901	7118200	1056	60	B/C	Pronound	Chocolate Brown	Sand	87	0.2	32.6	2.3	0.3
2205527	Soil	07N	627850	7118200	1079	80	B/C	Pronound	Dark Brown	Silt	59	0.05	6.2	3	0.05
2205528	Soil	07N	627800	7118200	1101	80	B/C	Subtle Sl	Dark Brown	Silt	55	0.1	4.3	2.7	0.05
2205529	Soil	07N	627800	7118100	1093	100	B/C	Pronound	Grey	Sand	63	0.1	4	2.4	0.05
2205530	Soil	07N	627849	7118100	1079	50	B/C	Steep	Dark Grey Black	Silt	55	0.1	3.1	1.1	0.05
2205531	Soil	07N	627899	7118100	1059	60	B/C	Pronound	Dark Grey Black	Silt	42	0.1	2.4	2.5	0.05
2205532	Soil	07N	627949	7118099	1050	60	B/C	Pronound	Dark Brown	Silt	46	0.2	3.5	15.5	0.05
2205533	Soil	07N	627999	7118099	1029	80	C	Pronound	Grey	Sand	89	0.4	7.1	1.7	0.05
2205534	Soil	07N	628049	7118100	1033	60	C	Pronound	Chocolate Brown	Silt	75	0.2	9.9	3.4	0.2
2205535	Soil	07N	628099	7118099	1046	50	B/C	Subtle Sl	Chocolate Brown	Silt	81	0.2	11.8	3.3	0.2
2205536	Soil	07N	628149	7118099	1052	80	B/C	Pronound	Chocolate Brown	Silt	68	0.2	7	7.1	0.05
2205537	Soil	07N	628251	7118100	1093	40	B/C	Subtle Sl	Chocolate Brown	Sand	81	0.2	8.8	2.2	0.05
2205538	Soil	07N	628300	7118100	1109	50	B/C	Subtle Sl	Chocolate Brown	Silt	99	0.2	8.2	1.7	0.05
2205539	Soil	07N	628650	7118200	1040	60	B	Steep	Chocolate Brown	Silt	126	0.05	12.5	4.1	0.2

Sample	Type	Zone	Easting	Northing	Elevation	Depth (cm)	Horizon	Slope	Colour	Texture	Zn (ppm)	Ag (ppm)	As (ppm)	Au (ppb)	Bi (ppm)
2205540	Soil	07N	628699	7118200	1015	50	B/C	Steep	Chocolate Brown	Silt	133	0.1	10.3	2.8	0.3
2205541	Soil	07N	628750	7118200	995	40	B/C	Steep	Chocolate Brown	Silt	101	0.05	9.4	3.8	0.3
2205542	Soil	07N	628800	7118200	967	100	B	Subtle Slo	Dark Brown	Silt	123	0.5	5.5	9.4	0.05
2205543	Soil	07N	628599	7118200	1060	50	B/C	Pronound	Chocolate Brown	Silt	214	0.1	11.3	4	0.05
2205544	Soil	07N	628550	7118200	1078	120	C	Subtle Slo	Chocolate Brown	Sand	855	2.1	36	10	0.05
2205545	Soil	07N	628499	7118200	1096	60	B/C	Pronound	Dark Brown	Silt	221	7.5	31.8	57.3	0.05
2205546	Soil	07N	628446	7118200	1122	50	B/C	Subtle Slo	Chocolate Brown	Sand	82	0.05	10	0.7	0.05
2205547	Soil	07N	628398	7118200	1124	40	B/C	Flat	Chocolate Brown	Silt	116	0.05	20	3.1	0.2
2205548	Soil	07N	628399	7118100	1133	40	B/C	Subtle Slo	Chocolate Brown	Sand	64	0.05	6.7	1	0.1
2205549	Soil	07N	628350	7118100	1123	60	B/C	Subtle Slo	Chocolate Brown	Silt	68	0.1	8.3	3.1	0.05
2205551	Soil	07N	628800	7116925	1193	70	B/C	Pronound	Chocolate Brown	Sand	131	0.2	7.5	4.3	0.2
2205552	Soil	07N	628751	7116925	1189	120	B/C	Subtle Slo	Bluish Grey	Sand	125	0.4	8.3	9.9	0.2
2205553	Soil	07N	628700	7116925	1205	50	B/C	Pronound	Bluish Grey	Sand	201	0.8	11.2	9	0.2
2205554	Soil	07N	628650	7116925	1172	80	C	Steep	Bluish Grey	Sand	122	0.4	10.5	11.8	0.1
2205555	Soil	07N	628601	7116925	1172	90	C	Steep	Bluish Grey	Sand	113	0.3	10.3	11.6	0.1
2205556	Soil	07N	628551	7116925	1151	90	B/C	Steep	Grey	Silt	196	2.4	10.1	19.2	0.1
2205557	Soil	07N	628501	7116925	1140	110	C	Pronound	Bluish Grey	Sand	173	0.9	9.1	6.5	0.2
2205558	Soil	07N	628450	7116925	1106	110	C	Pronound	Bluish Grey	Silt	91	0.2	7.8	9	0.1
2205559	Soil	07N	628400	7116925	1089	70	B/C	Pronound	Chocolate Brown	Sand	269	0.7	14.6	10.9	0.2
2205560	Soil	07N	628350	7116925	1062	110	B/C	Pronound	Bluish Grey	Sand	131	0.4	10.5	9.3	0.2
2205561	Soil	07N	628300	7116925	1047	80	C	Subtle Slo	Chocolate Brown	Silt	79	0.3	9.7	5.1	0.1
2205562	Soil	07N	628249	7116925	1040	40	B/C	Pronound	Chocolate Brown	Silt	170	0.6	7.5	1.5	0.2
2205563	Soil	07N	628198	7116925	1026	110	B/C	Steep	Grey	Sand	279	0.4	10.2	9.7	0.2
2205564	Soil	07N	628148	7116925	1017	60	B/C	Steep	Chocolate Brown	Silt	132	0.2	11.4	8.6	0.1
2205565	Soil	07N	628099	7116925	1006	100	C	Steep	Dark Blue Black	Sand	327	1.1	19.4	11.8	0.2
2205566	Soil	07N	628050	7116925	993	70	B/C	Pronound	Chocolate Brown	Sand	176	0.3	9	10.5	0.2
2205567	Soil	07N	627999	7116925	993	110	B/C	Steep	Chocolate Brown	Sand	136	0.4	17.2	12.9	0.2
2205568	Soil	07N	627950	7116925	1000	100	C	Steep	Bluish Grey	Sand	177	0.3	7.6	9	0.2
2205569	Soil	07N	627899	7116924	994	80	B/C	Steep	Chocolate Brown	Silt	116	0.2	9.3	12.8	0.1
2205570	Soil	07N	627848	7116924	989	70	B/C	Steep	Chocolate Brown	Sand	168	0.3	9.3	14.7	0.1
2205571	Soil	07N	627800	7116924	971	70	B/C	Steep	Chocolate Brown	Sand	95	0.05	10.4	2.7	0.2
2205572	Soil	07N	627824	7116800	915	90	B/C	Subtle Slo	Dark Grey Black	Silt	1443	1	10	8.1	0.1
2205573	Soil	07N	627848	7116800	932	80	B/C	Flat	Chocolate Brown	Sand	592	0.6	30.4	13.3	0.1
2205574	Soil	07N	627800	7116800	933	70	C	Subtle Slo	Chocolate Brown	Sand	115	0.2	10.5	4.4	0.1
2205576	Soil	07N	627874	7116800	932	80	B/C	Flat	Dark Grey Black	Silt	123	0.5	5.6	8.2	0.1
2205577	Soil	07N	627899	7116800	939	120	C	Subtle Slo	Grey	Clay	123	0.3	10.8	4.7	0.1
2205578	Soil	07N	627925	7116800	953	110	B/C	Pronound	Bluish Grey	Silt	371	1.5	14	12.5	0.2
2205579	Soil	07N	627950	7116800	965	120	C	Pronound	Bluish Grey	Sand	203	0.8	12.7	8.5	0.2
2205580	Soil	07N	627974	7116800	962	90	B	Pronound	Chocolate Brown	Silt	103	0.2	10.4	7.8	0.1
2205581	Soil	07N	628000	7116800	978	110	B/C	Pronound	Dark Grey Black	Sand	133	0.2	8.3	16.8	0.1
2205582	Soil	07N	628024	7116800	990	120	B	Steep	Chocolate Brown	Sand	64	0.05	10.8	3.4	0.1
2205583	Soil	07N	628350	7118001	1106	60	B	Subtle Slo	Chocolate Brown	Silt	45	0.05	9.4	1.8	0.2
2205584	Soil	07N	628301	7117999	1100	80	B/C	Subtle Slo	Chocolate Brown	Silt	69	0.05	8	1.9	0.1
2205585	Soil	07N	628450	7118100	1105	50	B/C	Pronound	Chocolate Brown	Sand	108	0.5	6.3	4.2	0.05

Sample	Type	Zone	Easting	Northing	Elevation	Depth (cm)	Horizon	Slope	Colour	Texture	Zn (ppm)	Ag (ppm)	As (ppm)	Au (ppb)	Bi (ppm)
2205586	Soil	07N	628499	7118099	1084	80	B	Steep	Chocolate Brown	Silt	102	0.7	7.8	1.4	0.05
2205587	Soil	07N	628550	7118100	1058	70	B/C	Pronound	Chocolate Brown	Silt	91	0.2	8.7	1.3	0.1
2205588	Soil	07N	628600	7118100	1042	110	B/C	Pronound	Grey	Silt	70	0.5	7.1	2.5	0.05
2205589	Soil	07N	628650	7118099	1027	80	B/C	Subtle Slq	Chocolate Brown	Silt	95	0.3	5.9	4.8	0.1
2205590	Soil	07N	628700	7118100	1004	60	B/C	Pronound	Chocolate Brown	Sand	112	0.2	12.1	2.8	0.2
2205591	Soil	07N	628751	7118100	979	50	B	Subtle Slq	Dark Brown	Silt	46	1.3	5.7	3.4	0.2
2205592	Soil	07N	628800	7118099	961	50	B/C	Subtle Slq	Grey	Silt	89	0.2	5.2	3.7	0.1
2205593	Soil	07N	628800	7118001	973	50	B	Subtle Slq	Dark Grey Black	Silt	192	0.3	4.1	4.5	0.1
2205594	Soil	07N	628751	7118001	988	40	B	Subtle Slq	Dark Brown	Silt	100	0.3	3.8	4.9	0.1
2205595	Soil	07N	628701	7118000	1004	120	B/C	Subtle Slq	Grey	Silt	114	0.3	4.1	4.1	0.05
2205596	Soil	07N	628651	7118001	1024	90	B/C	Subtle Slq	Chocolate Brown	Silt	127	0.2	4.1	1.8	0.05
2205597	Soil	07N	628600	7118001	1042	80	B	Subtle Slq	Chocolate Brown	Silt	121	0.3	5.6	1.8	0.05
2205598	Soil	07N	628552	7118000	1040	70	B/C	Subtle Slq	Chocolate Brown	Silt	96	0.3	6.7	0.9	0.1
2205599	Soil	07N	628501	7118002	1074	110	B/C	Pronound	Chocolate Brown	Silt	162	1.2	14.3	3.8	0.1
2205601	Soil	07N	628249	7117999	1122	60	B/C	Subtle Slq	Chocolate Brown	Silt	65	0.05	7.9	1.6	0.1
2205602	Soil	07N	628200	7118000	1090	90	B/C	Subtle Slq	Chocolate Brown	Sand	68	0.1	5.2	2.1	0.05
2205603	Soil	07N	628149	7118000	1061	80	B/C	Pronound	Chocolate Brown	Silt	65	0.1	5.7	6.3	0.05
2205604	Soil	07N	628100	7118000	1037	60	B/C	Subtle Slq	Dark Grey Black	Silt	60	0.2	4.2	3.2	0.05
2205605	Soil	07N	628050	7118000	1030	50	B/C	Subtle Slq	Chocolate Brown	Silt	94	0.2	5.9	5	0.1
2205606	Soil	07N	627999	7118000	1037	70	B	Subtle Slq	Dark Brown	Silt	48	0.2	3.1	1.4	0.05
2205607	Soil	07N	627949	7118000	1068	80	B/C	Pronound	Dark Brown	Silt	46	0.1	3.7	2.1	0.05
2205608	Soil	07N	627900	7118000	1086	80	B/C	Pronound	Dark Brown	Silt	47	0.2	3.4	3.6	0.05
2205609	Soil	07N	627848	7118000	1105	60	B/C	Pronound	Chocolate Brown	Silt	51	0.2	4.9	2.5	0.05
2205610	Soil	07N	627801	7118000	1124	70	B/C	Pronound	Grey	Sand	40	0.2	3	1.9	0.05
2205611	Soil	07N	627800	7117899	1130	100	C	Subtle Slq	Grey	Silt	55	0.1	5.1	1.7	0.1
2205612	Soil	07N	627849	7117900	1112	60	B/C	Pronound	Grey	Silt	48	0.2	3.6	1.6	0.05
2205613	Soil	07N	627898	7117900	1096	70	B	Pronound	Dark Brown	Silt	41	0.1	3.4	1.1	0.05
2205614	Soil	07N	627950	7117900	1067	60	B/C	Pronound	Grey	Silt	48	0.1	4.1	1.2	0.05
2205615	Soil	07N	628004	7117898	1066	60	B/C	Pronound	Dark Blue Black	Silt	72	0.2	4.7	3.6	0.1
2205616	Soil	07N	628049	7117900	1074	50	B/C	Pronound	Chocolate Brown	Silt	73	0.05	9.8	1.9	0.2
2205617	Soil	07N	628100	7117900	1066	50	B/C	Pronound	Chocolate Brown	Silt	64	0.05	5.7	6.8	0.05
2205618	Soil	07N	628149	7117900	1051	70	B/C	Subtle Slq	Chocolate Brown	Silt	68	0.1	4.5	2.9	0.1
2205619	Soil	07N	628200	7117900	1072	80	B/C	Pronound	Chocolate Brown	Sand	63	0.1	5.2	2.6	0.05
2205620	Soil	07N	628251	7117900	1097	40	B/C	Subtle Slq	Chocolate Brown	Silt	62	0.1	5	3.7	0.05
2205621	Soil	07N	628301	7117900	1125	40	B/C	Pronound	Chocolate Brown	Silt	74	0.05	9.6	1.1	0.2
2205622	Soil	07N	628351	7117899	1130	70	C	Flat	Light Brown	Sand	157	0.05	2.5	0.8	0.05
2205623	Soil	07N	628399	7117900	1112	40	B/C	Subtle Slq	Chocolate Brown	Sand	90	0.05	3.6	1.2	0.05
2205624	Soil	07N	628450	7117900	1097	110	C	Pronound	Chocolate Brown	Sand	109	0.5	7	5.9	0.2
2205626	Soil	07N	628451	7118001	1099	100	B/C	Pronound	Chocolate Brown	Sand	202	1	7.7	1.3	0.05
2205627	Soil	07N	628401	7118000	1122	60	B/C	Subtle Slq	Chocolate Brown	Silt	79	0.05	2.2	0.25	0.05
2205628	Soil	07N	628151	7117799	1068	70	B/C	Subtle Slq	Dark Grey Black	Silt	47	0.2	4.2	2.1	0.05
2205629	Soil	07N	628102	7117800	1074	50	B/C	Pronound	Chocolate Brown	Sand	95	0.05	6.7	6.1	0.05
2205630	Soil	07N	628051	7117799	1097	60	B/C	Flat	Chocolate Brown	Silt	69	0.05	10.7	3	0.1
2205631	Soil	07N	628001	7117799	1102	40	B/C	Subtle Slq	Chocolate Brown	Gravel	23	0.05	5.7	3.3	0.2

Sample	Type	Zone	Easting	Northing	Elevation	Depth (cm)	Horizon	Slope	Colour	Texture	Zn (ppm)	Ag (ppm)	As (ppm)	Au (ppb)	Bi (ppm)
2205632	Soil	07N	627951	7117799	1084	50	B	Pronounced	Dark Brown	Silt	67	0.2	5.1	0.8	0.05
2205633	Soil	07N	627901	7117800	1076	110	B/C	Subtle Slope	Chocolate Brown	Silt	80	0.1	5.8	3	0.05
2205634	Soil	07N	627850	7117800	1099	70	B/C	Pronounced	Dark Brown	Silt	35	0.2	2.2	3.1	0.05
2205635	Soil	07N	627800	7117799	1120	50	B/C	Subtle Slope	Chocolate Brown	Silt	48	0.05	3.7	1.8	0.05
2205636	Soil	07N	628201	7117800	1088	50	C	Subtle Slope	Grey	Sand	82	0.2	6.7	9.9	0.05
2205637	Soil	07N	628251	7117800	1105	80	C	Subtle Slope	Chocolate Brown	Sand	69	0.2	9	4	0.1
2205638	Soil	07N	628302	7117800	1112	60	C	Subtle Slope	Chocolate Brown	Silt	60	0.05	9.6	3.6	0.1
2205639	Soil	07N	628351	7117800	1130	60	C	Subtle Slope	Chocolate Brown	Silt	84	0.2	11.4	6.7	0.2
2205640	Soil	07N	628401	7117800	1134	50	C	Subtle Slope	Chocolate Brown	Silt	72	0.05	11	3.2	0.2
2205641	Soil	07N	628452	7117800	1143	50	B/C	Flat	Chocolate Brown	Sand	87	0.1	12.5	3.3	0.2
2205642	Soil	07N	628799	7117900	988	80	C	Pronounced	Chocolate Brown	Sand	251	1	9.2	17.8	0.2
2205643	Soil	07N	628752	7117900	998	80	C	Pronounced	Dark Blue Black	Sand	430	1.2	11.7	19.1	0.2
2205644	Soil	07N	628701	7117900	1002	60	B/C	Subtle Slope	Dark Grey Black	Silt	117	1.1	5.4	8.7	0.1
2205645	Soil	07N	628651	7117900	1027	90	C	Pronounced	Bluish Grey	Sand	220	0.4	11.9	6.8	0.2
2205646	Soil	07N	628601	7117900	1048	80	C	Pronounced	Light Brown	Sand	85	0.5	8.5	5.5	0.2
2205647	Soil	07N	628551	7117900	1073	90	C	Pronounced	Chocolate Brown	Sand	130	0.4	10.6	8.7	0.2
2205648	Soil	07N	628500	7117900	1077	60	C	Pronounced	Chocolate Brown	Sand	96	0.1	9.1	4.3	0.2
2205701	Soil	07N	628801	7116500	1239	60	C	Pronounced	Chocolate Brown	Clay	82	0.05	11.6	6.6	0.2
2205702	Soil	07N	628777	7116498	1146	50	C	Pronounced	Chocolate Brown	Sand	81	0.1	9.8	12.7	0.2
2205703	Soil	07N	628753	7116500	1140	60	C	Pronounced	Chocolate Brown	Sand	87	0.05	12	3.9	0.2
2205704	Soil	07N	628727	7116501	1153	60	C	Subtle Slope	Light Brown	Sand	69	0.05	10.3	4.3	0.2
2205705	Soil	07N	628702	7116500	1152	60	B/C	Subtle Slope	Chocolate Brown	Clay	66	0.7	10.1	12.5	0.2
2205706	Soil	07N	628676	7116500	1161	60	C	Subtle Slope	Grey	Sand	102	0.2	7.3	14.4	0.2
2205707	Soil	07N	628651	7116502	1160	50	B/C	Pronounced	Chocolate Brown	Sand	117	0.4	9.5	2.9	0.2
2205708	Soil	07N	628626	7116500	1151	90	C	Subtle Slope	Dark Grey Black	Sand	269	0.6	8.1	33.2	0.2
2205709	Soil	07N	628602	7116500	1148	40	C	Subtle Slope	Chocolate Brown	Sand	69	0.1	10.9	3.3	0.2
2205710	Soil	07N	628576	7116500	1129	60	C	Subtle Slope	Chocolate Brown	Clay	80	0.3	10.7	13.2	0.2
2205711	Soil	07N	628551	7116501	1126	50	C	Subtle Slope	Chocolate Brown	Sand	169	0.4	9.7	14.3	0.2
2205712	Soil	07N	628528	7116501	1122	50	C	Subtle Slope	Chocolate Brown	Sand	96	0.1	5.9	34.5	0.2
2205713	Soil	07N	628500	7116502	1108	100	C	Pronounced	Dark Grey Black	Sand	243	0.9	8.1	28	0.2
2205714	Soil	07N	628475	7116501	1096	110	C	Pronounced	Dark Grey Black	Sand	342	1.3	13.9	11.5	0.2
2205715	Soil	07N	628451	7116501	1086	70	B/C	Subtle Slope	Dark Grey Black	Silt	134	1.2	4.4	10.6	0.1
2205716	Soil	07N	628426	7116501	1076	100	C	Pronounced	Dark Grey Black	Sand	237	1.1	10.6	17.6	0.2
2205717	Soil	07N	628400	7116500	1065	120	C	Subtle Slope	Light Brown	Sand	161	0.8	6.5	10.3	0.2
2205718	Soil	07N	628376	7116500	1063	60	C	Pronounced	Dark Grey Black	Sand	171	0.4	10	5.9	0.2
2205719	Soil	07N	628349	7116501	1048	70	C	Pronounced	Chocolate Brown	Sand	142	0.4	8.9	6.5	0.1
2205720	Soil	07N	628327	7116500	1041	60	C	Pronounced	Light Brown	Sand	174	0.5	13	7.7	0.1
2205721	Soil	07N	628302	7116501	1031	50	B	Subtle Slope	Chocolate Brown	Silt	79	0.5	4.8	6.4	0.1
2205722	Soil	07N	628277	7116500	1006	50	B	Subtle Slope	Chocolate Brown	Silt	90	0.7	3.6	7.8	0.1
2205723	Soil	07N	628251	7116500	1001	80	B	Pronounced	Dark Brown	Silt	85	0.4	8.3	8.5	0.1
2205724	Soil	07N	628226	7116500	999	50	B	Flat	Chocolate Brown	Silt	112	0.3	3.5	5.9	0.1
2205726	Soil	07N	628200	7116500	1012	70	C	Pronounced	Grey	Sand	203	0.8	14.4	10.2	0.2
2205727	Soil	07N	628176	7116498	1011	70	C	Subtle Slope	Dark Grey Black	Sand	139	0.7	7.3	10.7	0.1
2205728	Soil	07N	628151	7116500	1008	50	C	Pronounced	Chocolate Brown	Sand	164	0.7	11.1	8.8	0.2

Sample	Type	Zone	Easting	Northing	Elevation	Depth (cm)	Horizon	Slope	Colour	Texture	Zn (ppm)	Ag (ppm)	As (ppm)	Au (ppb)	Bi (ppm)
2205729	Soil	07N	628127	7116499	1009	60	B/C	Pronoun	Chocolate Brown	Silt	160	0.7	9.9	8	0.2
2205730	Soil	07N	628100	7116499	1011	60	C	Pronoun	Dark Grey Black	Sand	170	1	7.4	7.2	0.2
2205731	Soil	07N	628074	7116499	1019	60	C	Subtle Sl	Light Brown	Sand	132	0.5	10.6	14.4	0.2
2205732	Soil	07N	628051	7116500	1011	120	C	Pronoun	Chocolate Brown	Silt	182	0.9	8	16.7	0.2
2205733	Soil	07N	628025	7116500	996	90	C	Subtle Sl	Dark Grey Black	Sand	140	0.4	13.7	6.1	0.1
2205734	Soil	07N	628000	7116499	987	50	C	Pronoun	Light Brown	Sand	114	0.2	17.2	6	0.2
2205735	Soil	07N	627974	7116501	991	70	C	Pronoun	Light Brown	Sand	233	1	10	10.1	0.3
2205736	Soil	07N	627951	7116499	988	70	B	Pronoun	Chocolate Brown	Silt	130	0.4	6.2	6.4	0.2
2205737	Soil	07N	627926	7116500	996	90	C	Pronoun	Grey	Sand	68	0.1	5.5	7.1	0.1
2205738	Soil	07N	627901	7116499	1013	90	C	Subtle Sl	Grey	Sand	85	0.2	9.1	10.1	0.2
2205739	Soil	07N	627875	7116499	1022	60	C	Subtle Sl	Grey	Sand	75	0.05	2.5	10	0.1
2205740	Soil	07N	628800	7116650	1139	120	C	Pronoun	Grey	Clay	297	1.2	15	14.8	0.2
2205741	Soil	07N	628776	7116651	1147	120	C	Pronoun	Grey	Sand	218	0.6	13.7	14.4	0.2
2205742	Soil	07N	628752	7116650	1152	50	C	Subtle Sl	Chocolate Brown	Sand	108	0.2	12.6	3.5	0.2
2205743	Soil	07N	628726	7116650	1158	50	C	Pronoun	Grey	Sand	208	0.9	33	16.7	0.2
2205744	Soil	07N	628702	7116650	1160	50	C	Subtle Sl	Grey	Sand	114	0.05	10.8	6.2	0.2
2205745	Soil	07N	628677	7116651	1167	60	C	Subtle Sl	Grey	Sand	284	0.2	17	12.9	0.2
2205746	Soil	07N	628652	7116651	1166	50	C	Subtle Sl	Grey	Sand	101	0.5	9.7	7.5	0.2
2205747	Soil	07N	628625	7116650	1160	90	C	Pronoun	Grey	Sand	220	1.5	13.1	16.5	0.2
2205748	Soil	07N	628602	7116650	1158	80	C	Subtle Sl	Chocolate Brown	Sand	258	0.6	17.3	9.6	0.2
2205749	Soil	07N	628577	7116651	1144	70	C	Pronoun	Chocolate Brown	Sand	194	0.6	7.9	10.1	0.2
2205751	Soil	07N	628553	7116650	1131	60	C	Pronoun	Chocolate Brown	Sand	120	0.6	7.4	6	0.2
2205752	Soil	07N	628527	7116650	1115	40	C	Steep	Grey	Sand	116	0.7	5.3	4	0.1
2205753	Soil	07N	628401	7116650	1125	40	C	Pronoun	Chocolate Brown	Sand	258	0.6	9.7	4.1	0.2
2205754	Soil	07N	628477	7116651	1112	70	B	Pronoun	Dark Grey Black	Silt	116	1	3.2	6.3	0.1
2205755	Soil	07N	628449	7116649	1113	70	B	Subtle Sl	Dark Grey Black	Silt	106	0.7	3	8	0.1
2205756	Soil	07N	628425	7116650	1097	60	C	Subtle Sl	Chocolate Brown	Sand	73	0.05	10.3	5.9	0.2
2205757	Soil	07N	628401	7116649	1079	80	C	Pronoun	Light Brown	Sand	60	0.05	10.4	7.5	0.2
2205758	Soil	07N	628377	7116650	1065	70	C	Subtle Sl	Light Brown	Sand	79	0.05	11.4	12.8	0.2
2205759	Soil	07N	628351	7116650	1049	120	C	Pronoun	Grey	Sand	264	0.7	8.5	16.1	0.2
2205760	Soil	07N	628325	7116650	1043	60	C	Pronoun	Dark Grey Black	Sand	232	0.6	10	12.5	0.2
2205761	Soil	07N	628301	7116650	1050	70	C	Pronoun	Dark Grey Black	Clay	102	0.4	9.4	10.2	0.1
2205762	Soil	07N	628275	7116650	1053	60	C	Pronoun	Light Brown	Sand	62	0.3	8.7	3.6	0.1
2205763	Soil	07N	628252	7116650	1038	60	C	Pronoun	Dark Grey Black	Sand	124	0.5	9.1	8.8	0.2
2205764	Soil	07N	628225	7116650	1032	60	C	Pronoun	Chocolate Brown	Sand	110	0.6	9.3	8.1	0.1
2205765	Soil	07N	628201	7116651	1017	80	C	Pronoun	Dark Grey Black	Sand	138	0.4	10.5	18.5	0.1
2205766	Soil	07N	628175	7116650	1002	60	C	Pronoun	Light Brown	Sand	359	1.3	15.2	15.4	0.2
2205767	Soil	07N	628151	7116651	998	90	C	Pronoun	Light Brown	Sand	103	0.2	11.6	7.6	0.2
2205768	Soil	07N	628126	7116649	986	80	C	Pronoun	Light Brown	Sand	74	0.7	9.7	10.9	0.2
2205769	Soil	07N	628102	7116651	992	80	C	Pronoun	Light Brown	Clay	118	0.2	7.4	18.8	0.2
2205770	Soil	07N	628075	7116650	976	120	C	Pronoun	Light Brown	Clay	76	0.05	8.3	12.9	0.1
2205771	Soil	07N	628052	7116650	963	40	C	Pronoun	Light Brown	Sand	96	0.05	10.4	7.7	0.2
2205772	Soil	07N	628027	7116650	960	50	C	Pronoun	Light Brown	Sand	126	0.1	9.8	13.4	0.2
2205773	Soil	07N	628799	7118499	1079	40	B/C	Steep	Chocolate Brown	Sand	78	0.05	3.3	2.4	0.05

Sample	Type	Zone	Easting	Northing	Elevation	Depth (cm)	Horizon	Slope	Colour	Texture	Zn (ppm)	Ag (ppm)	As (ppm)	Au (ppb)	Bi (ppm)
2205774	Soil	07N	628751	7118499	1099	40	B/C	Steep	Chocolate Brown	Sand	84	0.05	3.2	1.9	0.05
2205776	Soil	07N	628701	7118499	1109	50	C	Steep	Chocolate Brown	Sand	76	0.05	2.9	1.2	0.05
2205777	Soil	07N	628652	7118500	1124	70	C	Steep	Chocolate Brown	Sand	81	0.05	3.3	0.25	0.05
2205778	Soil	07N	628601	7118500	1140	70	B	Pronound	Chocolate Brown	Sand	73	0.05	6.3	0.25	0.05
2205779	Soil	07N	628548	7118500	1157	40	C	Pronound	Chocolate Brown	Sand	80	0.05	2	1.5	0.05
2205780	Soil	07N	628500	7118500	1157	70	C	Pronound	Chocolate Brown	Silt	62	0.05	10.9	6.2	0.1
2205781	Soil	07N	628449	7118500	1127	40	C	Subtle Slo	Chocolate Brown	Sand	58	0.05	10.9	1.9	0.1
2205782	Soil	07N	628399	7118502	1106	40	C	Pronound	Chocolate Brown	Sand	58	0.05	8.3	0.25	0.1
2205783	Soil	07N	628350	7118500	1093	70	B/C	Pronound	Chocolate Brown	Silt	56	0.05	4.6	0.25	0.05
2205784	Soil	07N	628299	7118499	1066	70	B	Pronound	Dark Grey Black	Silt	22	0.05	1.5	0.25	0.05
2205785	Soil	07N	628251	7118401	1088	40	C	Pronound	Chocolate Brown	Sand	55	0.3	11	2.7	0.3
2205786	Soil	07N	628202	7118400	1071	40	C	Steep	Chocolate Brown	Sand	45	0.05	10.1	1.7	0.2
2205787	Soil	07N	628152	7118400	1047	40	B	Pronound	Chocolate Brown	Silt	36	0.1	5.3	0.6	0.1
2205788	Soil	07N	628102	7118401	1003	50	C	Pronound	Chocolate Brown	Sand	75	0.05	4.1	1.8	0.05
2205789	Soil	07N	628051	7118401	969	50	C	Pronound	Chocolate Brown	Sand	94	0.2	7.7	2.6	0.1
2205790	Soil	07N	628001	7118400	995	70	B/C	Pronound	Dark Grey Black	Silt	75	0.1	4.5	2.2	0.05
2205791	Soil	07N	627951	7118401	1032	70	B/C	Pronound	Chocolate Brown	Sand	64	0.2	3.6	2	0.05
2205792	Soil	07N	627899	7118399	1068	60	B	Pronound	Chocolate Brown	Silt	72	0.3	2.5	2.2	0.05
2205793	Soil	07N	627849	7118400	1088	80	C	Pronound	Chocolate Brown	Sand	106	0.3	6.1	2.3	0.1
2205794	Soil	07N	627801	7118399	1100	50	C	Pronound	Chocolate Brown	Sand	58	0.1	5.3	3.4	0.05
2205795	Soil	07N	627799	7118501	1124	60	C	Pronound	Chocolate Brown	Sand	50	0.1	4	1.3	0.05
2205796	Soil	07N	627848	7118501	1093	100	B	Pronound	Chocolate Brown	Silt	64	0.2	5.1	2.1	0.05
2205797	Soil	07N	627900	7118500	1058	70	B	Pronound	Dark Brown	Silt	47	0.1	2.5	1.5	0.05
2205798	Soil	07N	627948	7118500	1020	60	B	Pronound	Chocolate Brown	Sand	44	0.05	2.1	0.9	0.05
2205799	Soil	07N	628001	7118500	986	80	B	Pronound	Dark Brown	Silt	50	0.1	2.6	1.8	0.05
2205801	Soil	07N	628048	7118502	959	70	C	Pronound	Dark Brown	Silt	68	0.1	4.4	1	0.05
2205802	Soil	07N	628098	7118500	959	50	C	Pronound	Chocolate Brown	Sand	73	0.1	5.2	1.5	0.05
2205803	Soil	07N	628148	7118500	980	50	C	Pronound	Chocolate Brown	Sand	73	0.05	6.1	0.9	0.05
2205804	Soil	07N	628201	7118501	1029	40	C	Pronound	Chocolate Brown	Sand	79	0.1	5.7	1.8	0.05
2205805	Soil	07N	628250	7118498	1036	50	B	Pronound	Dark Brown	Silt	62	0.1	3.4	4.7	0.05
2205806	Soil	07N	628800	7116799	666	40	C	Subtle Slo	Chocolate Brown	Sand	70	0.1	12	1.3	0.2
2205807	Soil	07N	628777	7116800	1229	40	C	Pronound	Light Brown	Sand	102	0.05	11.7	2	0.3
2205808	Soil	07N	628752	7116800	1218	40	C	Pronound	Chocolate Brown	Sand	49	0.05	6.6	1.4	0.2
2205809	Soil	07N	628727	7116799	1204	40	C	Pronound	Chocolate Brown	Sand	69	0.05	11	2.7	0.3
2205810	Soil	07N	628702	7116800	1192	50	C	Pronound	Chocolate Brown	Sand	59	0.05	11.7	3.2	0.2
2205811	Soil	07N	628676	7116799	1184	70	C	Pronound	Dark Grey Black	Sand	10	0.7	28.9	7.6	0.3
2205812	Soil	07N	628652	7116799	1165	120	C	Pronound	Grey	Sand	210	0.7	6.5	6.4	0.2
2205813	Soil	07N	628626	7116799	1151	60	C	Pronound	Grey	Sand	96	0.2	9.3	3.3	0.2
2205814	Soil	07N	628602	7116801	1138	60	C	Pronound	Chocolate Brown	Sand	83	0.1	9.2	6	0.2
2205815	Soil	07N	628576	7116800	1132	120	C	Pronound	Grey	Sand	202	0.4	10.2	9	0.2
2205816	Soil	07N	628551	7116800	1128	70	C	Pronound	Dark Grey Black	Sand	235	0.4	11.6	5.7	0.2
2205817	Soil	07N	628527	7116800	1118	70	C	Pronound	Chocolate Brown	Sand	87	0.2	10.7	7	0.2
2205818	Soil	07N	628501	7116800	1107	70	C	Pronound	Chocolate Brown	Sand	215	0.4	14	7.9	0.2
2205819	Soil	07N	628477	7116800	1098	60	C	Pronound	Chocolate Brown	Sand	182	0.5	12.8	12.3	0.2

Sample	Type	Zone	Easting	Northing	Elevation	Depth (cm)	Horizon	Slope	Colour	Texture	Zn (ppm)	Ag (ppm)	As (ppm)	Au (ppb)	Bi (ppm)
2205820	Soil	07N	628451	7116800	1083	50	C	Pronoun	Chocolate Brown	Sand	55	0.1	8.5	3.9	0.2
2205821	Soil	07N	628426	7116800	1074	90	C	Pronoun	Grey	Sand	137	0.3	17.1	6.8	0.2
2205822	Soil	07N	628400	7116800	1070	80	C	Pronoun	Grey	Sand	121	0.2	9.3	4.5	0.2
2205823	Soil	07N	628376	7116801	1060	70	C	Pronoun	Chocolate Brown	Sand	188	0.4	19	8.9	0.2
2205824	Soil	07N	628350	7116800	1051	50	C	Subtle Sl	Grey	Sand	156	0.4	11.7	7.5	0.2
2205826	Soil	07N	628326	7116800	1046	80	C	Pronoun	Light Brown	Sand	75	0.2	8.8	4.7	0.2
2205827	Soil	07N	628301	7116800	1040	40	C	Pronoun	Chocolate Brown	Sand	184	0.2	9.8	17.8	0.3
2205828	Soil	07N	628049	7116750	1011	50	C	Pronoun	Chocolate Brown	Sand	63	0.2	11.5	4.4	0.2
2205829	Soil	07N	628073	7116749	1019	40	C	Pronoun	Chocolate Brown	Sand	69	0.05	10.9	2.7	0.2
2205830	Soil	07N	628099	7116750	1034	40	C	Pronoun	Chocolate Brown	Sand	52	0.05	10.7	1.6	0.2
2205831	Soil	07N	628124	7116750	1039	50	C	Subtle Sl	Reddish Brown	Sand	46	0.05	10.5	3.7	0.2
2205832	Soil	07N	628150	7116750	1040	40	C	Subtle Sl	Chocolate Brown	Sand	66	0.05	12.3	2.3	0.2
2205833	Soil	07N	628175	7116751	1044	60	C	Pronoun	Chocolate Brown	Sand	55	0.05	9.8	2	0.2
2205834	Soil	07N	628199	7116750	1044	50	C	Pronoun	Chocolate Brown	Sand	66	0.05	10.9	2.3	0.2
2205835	Soil	07N	628225	7116749	1048	50	C	Pronoun	Light Brown	Sand	89	0.05	10.2	4.2	0.2
2205836	Soil	07N	628249	7116751	1049	40	C	Pronoun	Reddish Brown	Sand	136	0.05	6.9	14.3	0.2
2205837	Soil	07N	628276	7116751	1055	50	C	Pronoun	Chocolate Brown	Sand	40	0.05	11.6	7.9	0.3
2205838	Soil	07N	628275	7116800	1027	60	C	Pronoun	Grey	Sand	113	0.2	9.8	12.7	0.2
2205839	Soil	07N	628253	7116800	1021	50	C	Pronoun	Light Brown	Sand	40	0.05	8.5	2.2	0.2
2205840	Soil	07N	628227	7116801	1021	40	C	Pronoun	Chocolate Brown	Sand	52	0.2	9.1	3.3	0.2
2205841	Soil	07N	628203	7116801	1016	50	C	Pronoun	Chocolate Brown	Sand	50	0.1	8.4	4.5	0.2
2205842	Soil	07N	628175	7116802	1013	120	C	Pronoun	Grey	Sand	409	1.4	10.3	19.9	0.2
2205843	Soil	07N	628152	7116800	1017	70	C	Pronoun	Chocolate Brown	Sand	111	0.3	8.4	7.2	0.2
2205844	Soil	07N	628127	7116800	1016	70	C	Pronoun	Grey	Sand	196	0.4	10.6	6.6	0.2
2205845	Soil	07N	628101	7116800	1010	60	C	Pronoun	Chocolate Brown	Sand	126	0.4	8.5	10.2	0.1
2205846	Soil	07N	628076	7116800	1004	60	C	Pronoun	Chocolate Brown	Sand	126	0.05	10.1	5.2	0.2
2205847	Soil	07N	628052	7116801	995	70	C	Pronoun	Chocolate Brown	Sand	122	0.2	6.2	5.1	0.2
2205848	Soil	07N	627800	7117300	1148	50	C	Pronoun	Light Brown	Sand	83	0.05	13	2.1	0.2
2205849	Soil	07N	627849	7117299	1164	60	C	Pronoun	Light Brown	Sand	98	0.05	7	7.4	0.2
2205851	Soil	07N	627900	7117300	1178	50	C	Pronoun	Chocolate Brown	Sand	138	0.4	10.7	3	0.2
2205852	Soil	07N	627950	7117301	1183	80	C	Pronoun	Grey	Sand	310	0.7	11.4	17.3	0.2
2205853	Soil	07N	627999	7117300	1189	70	C	Pronoun	Grey	Sand	230	0.4	9.4	8.2	0.2
2205854	Soil	07N	628050	7117300	1192	60	C	Pronoun	Grey	Sand	166	0.3	7.2	9.6	0.2
2205855	Soil	07N	628099	7117300	1179	60	C	Pronoun	Grey	Sand	133	0.9	11.2	6.8	0.2
2205856	Soil	07N	628149	7117300	1178	50	B/C	Pronoun	Chocolate Brown	Sand	155	0.7	10.2	10.9	0.2
2205857	Soil	07N	628201	7117300	1180	120	C	Pronoun	Grey	Sand	188	0.4	8	8.4	0.1
2205858	Soil	07N	628249	7117299	1188	90	C	Pronoun	Grey	Sand	128	0.2	9.2	4.1	0.2
2205859	Soil	07N	628302	7117300	1207	50	C	Pronoun	Grey	Sand	108	0.2	12.6	8.8	0.2
2205860	Soil	07N	628350	7117301	1227	50	C	Subtle Sl	Chocolate Brown	Sand	76	0.4	8.6	5.7	0.2
2205861	Soil	07N	628399	7117300	1241	70	C	Subtle Sl	Light Brown	Silt	44	0.05	11.2	3.5	0.2
2205862	Soil	07N	628449	7117300	1253	30	C	Subtle Sl	Light Brown	Sand	99	0.2	12.1	2.4	0.2
2205863	Soil	07N	628499	7117300	1270	30	C	Subtle Sl	Light Brown	Sand	94	0.3	11.6	4.3	0.2
2205864	Soil	07N	628548	7117301	1282	40	C	Subtle Sl	Light Brown	Sand	131	0.3	12.6	3.3	0.2
2205865	Soil	07N	628599	7117300	1275	50	C	Pronoun	Grey	Sand	423	0.3	12.3	11.8	0.2

Sample	Type	Zone	Easting	Northing	Elevation	Depth (cm)	Horizon	Slope	Colour	Texture	Zn (ppm)	Ag (ppm)	As (ppm)	Au (ppb)	Bi (ppm)
2205866	Soil	07N	628799	7117299	1196	50	B/C	Pronoun	Chocolate Brown	Sand	66	0.1	5.9	2.1	0.2
2205867	Soil	07N	628751	7117299	1203	40	B/C	Steep	Chocolate Brown	Sand	90	0.4	8.9	3.7	0.2
2205868	Soil	07N	628701	7117300	1227	40	B/C	Pronoun	Chocolate Brown	Sand	61	0.3	6.8	1.7	0.3
2205869	Soil	07N	628651	7117300	1250	50	C	Pronoun	Light Brown	Sand	130	0.6	12.7	7	0.2
2205870	Soil	07N	628799	7117200	1247	40	C	Steep	Chocolate Brown	Sand	50	0.2	9.4	5	0.3
2205871	Soil	07N	628750	7117201	1256	40	B/C	Pronoun	Chocolate Brown	Sand	60	0.3	9.8	4.5	0.3
2205872	Soil	07N	628700	7117201	1262	30	B/C	Pronoun	Dark Brown	Sand	103	0.5	10.2	4.9	0.2
2205873	Soil	07N	628549	7117400	1261	40	B/C	Pronoun	Chocolate Brown	Sand	36	0.05	7.1	2.3	0.3
2205874	Soil	07N	628799	7117400	1152	50	C	Pronoun	Light Brown	Sand	73	0.3	12.7	1.3	0.3
2205876	Soil	07N	628751	7117401	1173	50	C	Steep	Chocolate Brown	Sand	90	0.3	10.7	3.8	0.2
2205877	Soil	07N	628699	7117400	1210	50	C	Steep	Chocolate Brown	Sand	45	0.05	10.4	2.2	0.2
2205878	Soil	07N	628650	7117400	1225	50	C	Steep	Chocolate Brown	Sand	64	0.1	5.4	6.3	0.1
2205879	Soil	07N	628601	7117400	1235	40	B/C	Steep	Chocolate Brown	Sand	121	0.3	7.6	8.9	0.2
2205880	Soil	07N	628501	7117399	1268	40	C	Subtle Sl	Chocolate Brown	Sand	70	0.05	11.9	3.6	0.1
2205881	Soil	07N	628450	7117400	1253	50	C	Pronoun	Chocolate Brown	Sand	70	0.05	11.4	3.2	0.1
2205882	Soil	07N	628399	7117399	1235	50	C	Pronoun	Chocolate Brown	Sand	59	0.05	11.8	4	0.1
2205883	Soil	07N	628349	7117400	1209	50	B/C	Pronoun	Chocolate Brown	Sand	56	0.05	11.2	4.6	0.1
2205884	Soil	07N	628300	7117398	1194	70	C	Pronoun	Light Brown	Clay	71	0.05	7.7	7.9	0.1
2205885	Soil	07N	627800	7117399	1169	40	C	Subtle Sl	Chocolate Brown	Sand	61	0.05	4	1	0.05
2205886	Soil	07N	627850	7117400	1177	80	B/C	Pronoun	Chocolate Brown	Silt	88	0.2	10.9	3.6	0.1
2205887	Soil	07N	627900	7117400	1175	120	B/C	Subtle Sl	Chocolate Brown	Silt	81	0.2	11.7	3.8	0.1
2205888	Soil	07N	627952	7117400	1178	70	C	Pronoun	Chocolate Brown	Clay	68	0.1	8.9	3.3	0.1
2205889	Soil	07N	628000	7117400	1188	70	C	Pronoun	Dark Grey Black	Sand	68	0.5	14.1	11.3	0.1
2205890	Soil	07N	628051	7117400	1196	50	C	Pronoun	Chocolate Brown	Sand	124	0.2	11.5	5.4	0.2
2205891	Soil	07N	628102	7117400	1193	50	C	Pronoun	Chocolate Brown	Sand	109	0.05	10	5.8	0.2
2205892	Soil	07N	628152	7117400	1186	50	C	Pronoun	Chocolate Brown	Sand	93	0.05	8.9	3.4	0.1
2205893	Soil	07N	628201	7117400	1184	40	C	Pronoun	Light Brown	Sand	74	0.05	10.4	6.9	0.1
2205894	Soil	07N	628250	7117400	1184	40	C	Pronoun	Chocolate Brown	Sand	83	0.05	8.6	3.7	0.05
2205895	Soil	07N	627800	7117700	666	70	B/C	Pronoun	Chocolate Brown	Silt	45	0.2	4.6	3.5	0.05
2205896	Soil	07N	627851	7117701	1090	60	B	Pronoun	Chocolate Brown	Silt	39	0.2	3.8	2.4	0.05
2205897	Soil	07N	627900	7117700	1102	110	C	Pronoun	Light Brown	Sand	87	0.1	8.3	12.1	0.1
2205898	Soil	07N	627950	7117700	1103	70	C	Pronoun	Light Brown	Sand	80	0.1	8.7	3.1	0.1
2205899	Soil	07N	627998	7117700	1113	70	B/C	Subtle Sl	Light Brown	Silt	66	0.05	7.7	2.9	0.1
2205901	Soil	07N	628050	7117700	1115	50	C	Subtle Sl	Chocolate Brown	Sand	50	0.05	12.2	2.2	0.2
2205902	Soil	07N	628100	7117701	1099	90	C	Pronoun	Chocolate Brown	Sand	73	0.05	9.5	2.4	0.1
2205903	Soil	07N	628150	7117700	1085	90	C	Pronoun	Chocolate Brown	Sand	84	0.2	5.6	3.4	0.1
2205904	Soil	07N	628199	7117699	1090	70	C	Pronoun	Light Brown	Sand	73	0.05	9.5	7.8	0.2
2205905	Soil	07N	628250	7117700	1106	60	C	Pronoun	Light Brown	Sand	53	0.1	6.4	4.1	0.1
2205906	Soil	07N	628300	7117698	1122	80	C	Pronoun	Grey	Sand	89	0.6	8.8	6	0.2
2205907	Soil	07N	628351	7117700	1135	50	C	Pronoun	Dark Grey Black	Sand	102	1.8	12.6	8.9	0.2
2205908	Soil	07N	628399	7117700	1139	40	C	Pronoun	Light Brown	Sand	75	0.1	8	2.5	0.2
2205909	Soil	07N	628449	7117700	1125	60	C	Pronoun	Grey	Sand	120	0.4	13.5	3.9	0.2
2205910	Soil	07N	628500	7117700	1104	40	C	Steep	Grey	Sand	245	0.5	7.4	6.4	0.2
2205911	Soil	07N	628549	7117701	1095	60	C	Pronoun	Light Brown	Sand	113	0.6	9.6	6.3	0.2

Sample	Type	Zone	Easting	Northing	Elevation	Depth (cm)	Horizon	Slope	Colour	Texture	Zn (ppm)	Ag (ppm)	As (ppm)	Au (ppb)	Bi (ppm)
2205912	Soil	07N	628600	7117701	1091	40	C	Pronound	Grey	Sand	161	0.6	15.2	4.7	0.2
2205913	Soil	07N	628651	7117700	1107	40	C	Pronound	Light Brown	Sand	60	0.9	16.7	9.6	0.4
2205914	Soil	07N	628700	7117700	1107	120	B/C	Pronound	Dark Grey Black	Silt	4	0.6	8.5	9.6	0.1
2205915	Soil	07N	628800	7117700	1040	40	C	Pronound	Light Brown	Sand	140	0.3	11.4	2.4	0.2
2205916	Soil	07N	628752	7117701	1069	50	C	Pronound	Light Brown	Sand	90	0.4	23	6.1	0.2
2205917	Soil	07N	628800	7117799	1038	40	C	Pronound	Light Brown	Sand	113	0.2	13.6	9.3	0.2
2205918	Soil	07N	628749	7117799	1067	50	C	Pronound	Light Brown	Sand	116	0.1	10.9	3.4	0.2
2205919	Soil	07N	628701	7117800	1068	50	C	Pronound	Light Brown	Sand	160	0.4	13.2	3.2	0.2
2205920	Soil	07N	628649	7117799	1051	40	C	Pronound	Light Brown	Sand	54	0.8	48	11.5	0.3
2205921	Soil	07N	628601	7117800	1049	60	C	Pronound	Chocolate Brown	Sand	67	0.3	7.2	10.6	0.2
2205922	Soil	07N	628550	7117800	1082	60	C	Pronound	Light Brown	Sand	79	0.2	10	2.9	0.2
2205923	Soil	07N	628500	7117798	1123	60	C	Pronound	Light Brown	Sand	113	0.6	13.4	2.9	0.2

Sample	Type	Zone	Easting	Northing	Au (FA)	Mo	Cu	Pb	Zn	Ag	As	Bi	Comment
2006976	Rock	7N	628100	7116700	0.014	1.9	75.9	4.6	108	0.05	2.5	0.1	Weakly oxidized cherty argillite with rare local < 1 mm qz veinlets.
2006977	Rock	7N	628100	628100	0.011	3.3	48.9	3.3	65	0.05	2.9	0.1	Weakly oxidized cherty argillite with rare local < 1 mm qz veinlets.
1774374	Rock	7N	628100	628100	0.003	1.33	12.6	1.5	14	0.05	0.9	0	Weakly oxidized cherty argillite with rare local < 1 mm qz veinlets.