

Yukon Mineral Exploration Program (YMEP) 22-058

Henderson Creek Area

Dawson Mining District

NTS: 1150/06

Latitude: 63° 22.23" N Longitude: -139° 11.97" W

Claims and Lease List:

Frenzy 1-29

Sabo-E 1-11

Sabo-W 1-22

2 Mile Placer Prospecting Lease

ID01784

Owner- Allen Wywrot- 100%

3 Mile Placer Prospecting Lease

ID01782

Owner- Wildwood Exploration- 100%

3 Mile Placer Prospecting Lease

ID01783

Owner- Wildwood Exploration- 100%

Work Performed:

Mobilization: June 26, 27, 28 and Aug 18

Demobilization: July 8, 9 and September 1st

RC Drilling: June 29th to July 7th and Aug 18th to Aug 31st

Prepared for Shawn Ryan
By GroundTruth Exploration Inc.

Written by: Simon Cash

January 31, 2023



Figure 1: North Henderson Creek looking Northeast up the Creek

Table of Contents

1	INTRODUCTION	ERROR! BOOKMARK NOT DEFINED.
2	PREVIOUS INVESTIGATIONS.....	4
3	LOCATION AND ACCESS	4
4	PHYSIOGRAPHY AND CLIMATE.....	6
5	GEOLOGY	6
5.1	REGIONAL GEOLOGY	6
5.2	PROPERTY GEOLOGY	7
6	REVERSE CIRCULATION (RC) DRILLING	9
6.1	WORK PERFORMED	9
6.2	WORKING PROCEDURE FOR RC DRILLING.....	9
6.4	RESULTS	11
7	DISCUSSION AND INTERPRETATION.....	21
8	RECOMMENDATIONS	21
9	EXPENDITURES.....	22
10	QUALIFICATION	23
11	REFERENCES.....	24
13	APPENDICE	25
	Appendix A: Downhole Drill Data.....	25

1 Introduction

Henderson, North Henderson, and Moosehorn Creeks have been targeted for placer gold based on the discovery of the Vertigo hard rock deposit, located 58 km north of the Coffee Gold deposit. The drainage system from the Vertigo hard rock anomaly, as well as the discovery of several gold-in-soil anomalies, was the incentive for staking many claims in the area.

Shawn Ryan had analyzed various placer camps (outside the Klondike gold fields) in the Yukon and observed that Creeks flowing from significant gold deposits contained placer gold. Proven examples include Dublin Gulch deposit, Scheelite Dome, Clear Creek, Freegold Area, Moose Horn range, Mt Nansen, White Gold Deposit, and the Casino Deposit with Canadian Creek having placer gold.

GroundTruth Exploration Inc. was hired to conduct a placer exploration program in 2022 that comprised of two RC drilling programs on the Sabo East claims and the North Henderson Leases to test for economic gold.

2 Previous Investigations

There has been extensive placer gold mining in the past on Henderson and North Henderson Creeks. There is a high-grade gold mine, which has produced 20,000 ounces, located on Maisy May Creek. Gold Watch Creek, Moosehorn Creek and Russian Creek have all be mined in the past for placer gold. Gold has also been discovered on Tenderfoot Creek.

In the field season of 2019, GroundTruth Exploration Inc. and GroundTruth Drilling Inc. were contracted to perform thirteen resistivity and induced polarization surveys and a thirty-one hole 5" RAB drilling program. By placing the drill holes on or near the RES/IP surveys the stratigraphic layers such as muck, sand, gravel, and bedrock were determined with certainty on the profiles. A considerable amount of permafrost was encountered in the area through drilling and some of the drill holes terminated too shallow. The following year in 2020 GroundTruth returned to complete the drilling and conducted a 5000m Ground Penetrating Radar program to measure the depth to bedrock to help better understand the ground before drilling. The drilling results indicated that there is a substantial amount of permafrost in the area and placer gold is scarce on the claims except for the Sabo claims.

3 Location and Access

The claims are located 75 km south southeast of Dawson City within the Yukon River drainage system in west-central Yukon Territory. The target is centered at latitude 63° 22.23' N and longitude -139° 11.97' W and located on NTS map sheet 115O/06 (Figure 1). The property can be accessed by helicopter year-round and by the gravel road network from Dawson City in the spring, summer and fall. This road system is closed during the winter months. The first 75 km of gravel roads from Dawson City are maintained by the Yukon Government and the remaining 65 km are on placer roads maintained by local placer miners.

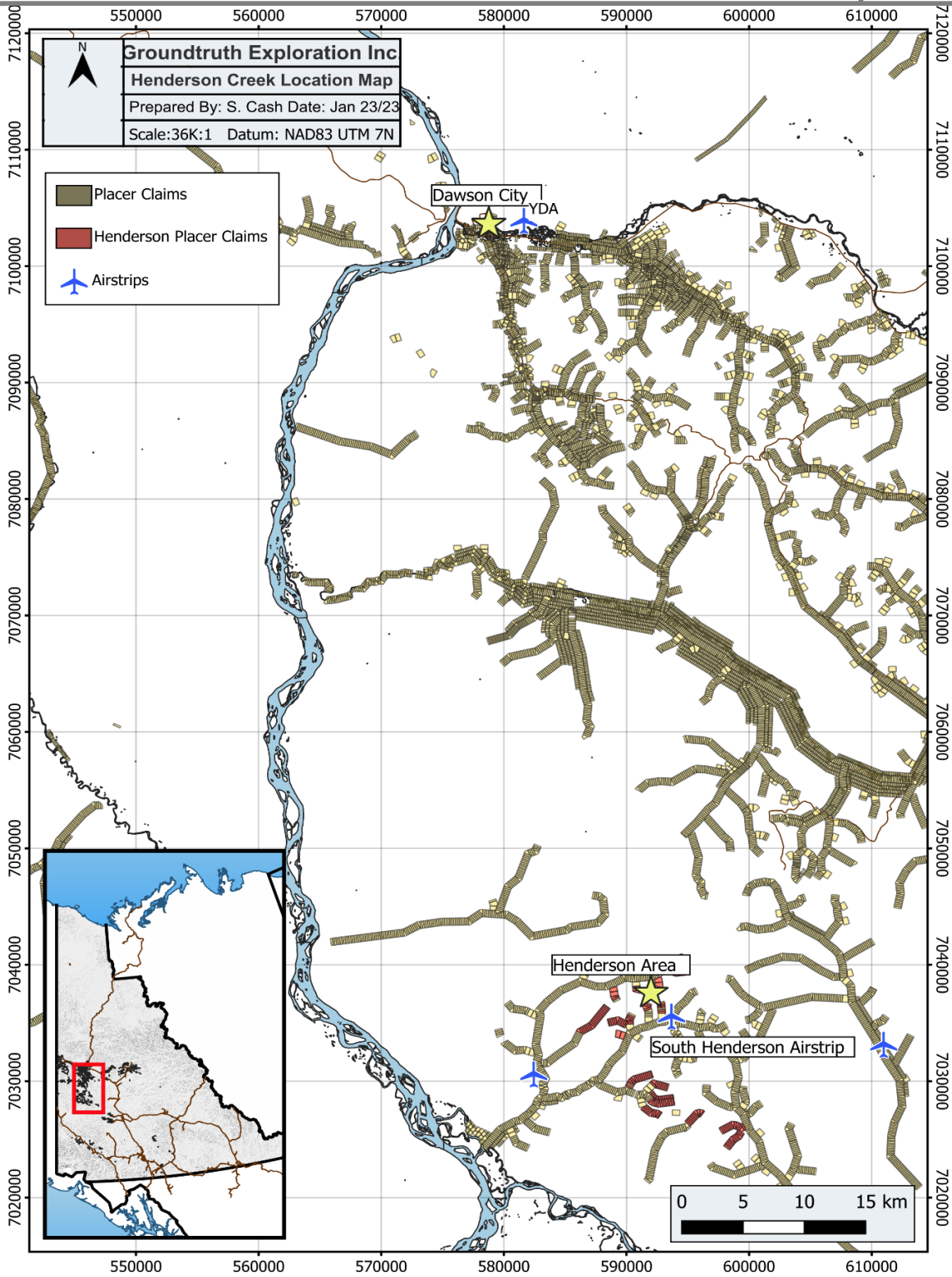


Figure 2: Henderson Area Location Map

4 Physiography and Climate

The work area is situated in an unglaciated zone of the Klondike Plateau region of Canada's Boreal Cordillera ecozone. The property is in Canada's discontinuous permafrost zone therefore permafrost is distributed unevenly throughout the property.

Moderately-sloped hills range from 545 to 1036 m in height. The valley bottoms and northern slopes have thick moss mats, black spruce, and alder thickets over icy permafrost, while southern slopes are generally more sparsely vegetated with ground leaf cover, white spruce, aspen and birch trees. The area has experienced forest fires in the last 50-100 years as evidenced by dead fallen spruce trees and standing deadwood in many areas.

The area experiences the sub-arctic continental climate with a summer mean of 10°C and a winter mean of -23°C, temperatures can reach as high as 35°C in the summer and as low as -55°C in the winter. Typically, the interior intermontane plateau receives between 250 to 500 mm of annual precipitation, varying with elevation, snowfall accounts for 35 to 60% of the precipitation.

5 Geology

5.1 Regional Geology

The area of study is situated in the Yukon-Tanana Terrane (YTT). The YTT is a late Devonian to middle Mississippian continental magmatic arc extending from northern British Columbia into west-central Yukon and eastern Alaska and is bounded to the northeast by the Tintina fault and to the south-west by the Denali fault (Colpron et al., 2006).

The YTT is composed of four main assemblages including the Snowcap, Finlayson, Klondike and Klinkit (Colpron et al. 2006) intruded by the Dawson Range batholith (a phase of the Whitehorse Suite), Prospector Mountain plutonic suite and Casino plutonic suites (Mortensen et al., 2010).

"The Snowcap assemblage (PDS1) forms the base of the YTT consisting of quartzite, psammite, pelite and marble with minor greenstone and amphibolite. The Finlayson assemblage (DMF1) is composed of amphibolite, garnet amphibolite and schist. The Klondike assemblage (PK1, PK2) consists of muscovite-chlorite quartz phyllite, quartz-muscovite-chlorite schist, micaceous quartzite, psammite, phyllonite and schist. The

Whitehorse Suite (mKqW, mKgW), a phase of the Dawson Range Batholith, consists of biotite quartz monzonite, biotite granite, leucogranite, monzogranite, granodiorite, diorite, granite and tonalite.” (Ryan et al., 2013). The Klinkit (CK1) is composed of mafic to intermediate metavolcaniclastic and metavolcanics rocks, with minor limestone and conglomerate (Colpron et al., 2006; Roots et al, 2004).

5.2 Property Geology

“Henderson, North Henderson and Moosehorn Creeks and their tributaries, located in the Yukon-Tanana Terrane, are underlain by Carbiniferous metamorphic rocks of the Simpson Range (MgSR), Carbiniferous metamorphic rocks of the Finalyson Assemblage (DMF1) and Devonian metamorphic rocks of the Snowcap Assemblage (PDS1, PDS2). MgSR is composed of hornblende bearing metagranodiorite, metadiorite, metatonalite and tonalite. DMF1 is mostly composed of amphibolite. PDS1 consists of quartzite, psammite, pelite and marble; minor greenstone and amphibolite, and quartz-mica-schist, whereas PDS2 consists mainly of marble. There is a north to south trending unknown fault type separating the MgSR from PDS1 to the northeast and MgSR from DMF1 and PDS2 to the southeast portion of the properties. A 2.7 km northwest to southeast trending strike slip fault is located to the north area of the property” (Ryan, et al, 2016), our area of study is completely underlain by MgSR and PDS2, (Figure 2).

6 Reverse Circulation (RC) Drilling

6.1 Work Performed

The 2022 RC drill Program consisted of two shifts, drilling 38 holes on the Sabotage East claims from June 29th to July 7th and drilling 63 holes on the North Henderson Claims from August 18th to August 31st. A total of 1490 ft was drilled between all the claims.

6.2 Working Procedure for RC Drilling

The GT RC Drill is a light-weight rotary percussion drill rig mounted on a set of rubber tracks. The drill itself is powered by a diesel engine. The placer RC was converted to drive a cased hole 4" and 6" in diameter and use 5' drill rods for this project. The GT RC Drill is equipped with a wireless remote-control system used to drive it between drill sites. There are four hydraulically operated vertical outriggers on the drill for self-leveling on drill sites. The rubber tracked platform on the GT RC Drill has 2400sq inches of track coverage area giving it 1.8psi ground pressure allowing it to be extremely versatile and low impact in the field.

The RC Drill is a lightweight track mounted exploration drill rig that involves the use of DTH rotary percussion drilling equipment using compressed air from a stationary air compressor which is connected to the rubber tracked drill using an air hose. The drill uses a pneumatic reciprocating piston driven 'hammer' to energetically drive a tungsten carbide tipped drill bit into overburden and rock. Compressed air is fed through the drill rod string to the DTH hammer and with rotation from the top drive; cuttings are then returned to the surface through the inner rod under pressurized exhaust air. Cuttings then pass through the goose neck and continue to the cyclone and are collected in a 24" x 36" Ore Bag at the bottom of the cyclone. Drill cuttings were processed in a Gold Hog Raptor concentrator to find gold.

6.3 Data Processing

Drillhole data is logged nightly into drillhole database. The following is logged for each drill hole – Hole ID, XY Coordinates, Drill Method, Hole Diameter, Drill Date, Overburden type and thickness, Bedrock Depth, Total Hole Depth and Recovered Au mg (visually estimated). A section is drafted of each drillhole fence with topography and creek location.

Pay gravels are sluiced onsite during drilling through a ‘Gold Hog’ sluice. The concentrate is captured in a basin at the end of the run and put through the sluice a second time. Concentrate is then hand panned and gold grain count and weight estimate is done visually. As a Quality control measure on sluicing and panning, 2 pieces of visually distinct gold are added to the concentrate on the second sluicing run and an additional 2 pieces of distinct gold are added to the pan. Both pieces are retrieved prior to gold grain count after panning as a check against gold loss in the process.

Gold recovery estimates in milligrams are done visually by the panner onsite using the YGS Gold grain estimate card relative to counts by gold grain size. These visual gold estimates are compared against a library of reference drill hole gold grain recovery examples from actual weighed amounts to ensure accurate estimates.



YGS Placer Gold Scale for reference on visual estimate calculations

6.4 Results

The table and figure below and figure below indicate hole locations, total drilled depth and bedrock depth for all holes drilled on the 2022 Henderson Area RC program. The downhole logs of each hole are in Appendix A.

hole id	drilling method	hole diameter	X	Y	Muck depth start ft	Gravel depth start ft	bedrock depth start ft	total depth ft	actual au mg
Hen22-01	RC Drill	4"	593115	7039942	0	10	22.5	25	0.5
Hen22-02	RC Drill	4"	593107	7039950	0	12	25	30	3.5
Hen22-03	RC Drill	4"	593102	7039958	0	12	23	30	2
Hen22-04	RC Drill	4"	593095	7039967	0	12	23	25	0.5
Hen22-05	RC Drill	4"	593089	7039974	0	18	23	30	1.2
Hen22-06	RC Drill	4"	593081	7039982	0	15	20	25	2
Hen22-07	RC Drill	4"	593074	7039992	0	17	26	30	1
Hen22-08	RC Drill	4"	593066	7040001	0	18	30	35	0
Hen22-09	RC Drill	4"	593060	7040008	0	17	30	35	0.5
Hen22-10	RC Drill	4"	593049	7040015	0	10	19	25	1
Hen22-11	RC Drill	4"	593043	7040024	0	7	10	20	1.2
Hen22-12	RC Drill	4"	593031	7040034	0	4	11	15	13.7
Hen22-13	RC Drill	4"	593025	7040047	0	4	9	15	23
Hen22-14	RC Drill	4"	593018	7040058	0	3	13	25	0.5
Hen22-15	RC Drill	4"	593016	7040068	0	4	15	25	0
Hen22-16	RC Drill	4"	593010	7040075	0	4	15	25	0
Hen22-17	RC Drill	4"	593101	7040111	0	5	13	20	0
Hen22-18	RC Drill	4"	593112.7	7040106	0	6	19	25	2
Hen22-19	RC Drill	4"	593431	7039771	0	10	0	0	0
Hen22-20	RC Drill	4"	593424	7039761	0	10	16	20	0
Hen22-21	RC Drill	4"	593420	7039753	0	13	18	20	0
Hen22-22	RC Drill	4"	593414	7039746	0	13	20	25	0
Hen22-23	RC Drill	4"	593412	7039737	0	13	18	25	0.5
Hen22-24	RC Drill	4"	593408	7039727	0	8	16	20	2.2
Hen22-25	RC Drill	4"	593636	7039648	0	8	15	20	0
Hen22-26	RC Drill	4"	593639	7039650	0	10	18	25	0.5
Hen22-27	RC Drill	4"	593644	7039656	0	3	8	15	0
Hen22-28	RC Drill	4"	593650	7039662	0	3	8	10	0

hole id	drilling method	hole diameter	X	Y	Muck depth start ft	Gravel depth start ft	bedrock depth start ft	total depth ft	actual au mg
Hen22-29	RC Drill	4"	593654	7039669	0	3	6	10	0
Hen22-30	RC Drill	4"	593366	7039741	0	10	15	20	0.5
Hen22-31	RC Drill	4"	593261	7039849	0	4	8	10	0
Hen22-32	RC Drill	4"	593044	7040046	0	5	10	15	1
Hen22-33	RC Drill	4"	593029	7040042	0	5	11	15	0
Hen22-34	RC Drill	4"	593030	7040035	0	5	10	15	38.5
Hen22-35	RC Drill	4"	593146	7039991	0	10	21	25	1.3
Hen22-36	RC Drill	4"	593138	7039997	0	15	26	30	0
Hen22-37	RC Drill	4"	593553	7040418	0	11	16	20	0
Hen22-38	RC Drill	4"	593555	7040353	0	5	30	35	1
Hen22-39	RC Drill	4"	593558	7040344	0	12	26	35	2.4
Hen22-40	RC Drill	4"	593563	7040334	0	10	24	30	13.8
Hen22-41	RC Drill	4"	593569	7040327	0	12	24	30	0
Hen22-42	RC Drill	4"	593593	7040336	0	10	20	25	5
Hen22-43	RC Drill	4"	593598	7040327	0	8	18	25	5.5
Hen22-44	RC Drill	4"	593978	7040542	0	6	25	30	0
Hen22-45	RC Drill	4"	593980	7040535	0	5	27	35	0
Hen22-46	RC Drill	4"	593985	7040527	0	6	27	35	0
Hen22-47	RC Drill	4"	593991	7040520	0	6	25	30	2.1
Hen22-48	RC Drill	4"	593992	7040511	0	5	26	35	0
Hen22-49	RC Drill	4"	593996	7040504	0	5	24	30	0
Hen22-50	RC Drill	4"	594004	7040497	0	6	20	25	0
Hen22-51	RC Drill	4"	594384	7040829	0	8	24	30	2.4
Hen22-52	RC Drill	4"	594389	7040820	0	8	23	25	2.2
Hen22-53	RC Drill	4"	594392	7040810	0	8	23	25	0
Hen22-54	RC Drill	4"	594393	7040801	0	8	20	25	51.9
Hen22-55	RC Drill	4"	594393	7040794	0	8	20	25	1.4
Hen22-56	RC Drill	4"	594395	7040787	0	9	20	25	0.5
Hen22-57	RC Drill	4"	594395	7040781	0	8	19	25	2.5
Hen22-58	RC Drill	4"	594006	7040489	0	6	17	20	2.4
Hen22-59	RC Drill	4"	594005	7040481	0	6	19	25	1.6
Hen22-60	RC Drill	4"	593538	7040448	0	2	6	10	0
Hen22-61	RC Drill	4"	593545	7040439	0	5	10	15	0
Hen22-62	RC Drill	4"	593549	7040432	0	6	15	15	0
Hen22-63	RC Drill	4"	593550	7040424	0	6	14	25	0
Soe22-01	RC Drill	6"	589594	7035044	0	15	30	35	3
Soe22-02	RC Drill	6"	589578	7035092	0	8	25	30	0
Soe22-03	RC Drill	6"	589568	7035082	0	12	25	30	10

hole id	drilling method	hole diameter	X	Y	Muck depth start ft	Gravel depth start ft	bedrock depth start ft	total depth ft	actual au mg
Soe22-04	RC Drill	6"	589538	7035072	0	25	35	40	10
Soe22-05	RC Drill	6"	589512	7035086	0	27	35	40	6
Soe22-06	RC Drill	6"	589516	7035096	0	24	35	40	5
Soe22-07	RC Drill	6"	589523	7035105	0	15	27	35	7.5
Soe22-08	RC Drill	6"	589525	7035113	0	10	20	25	3
Soe22-09	RC Drill	6"	589519	7035122	0	10	16	20	3
Soe22-10	RC Drill	6"	589435	7035171	0	8	15	20	0
Soe22-11	RC Drill	6"	589428	7035163	0	15	25	30	7
Soe22-12	RC Drill	6"	589421	7035151	0	10	30	35	15
Soe22-13	RC Drill	6"	589418	7035143	0	30	37	45	3
Soe22-14	RC Drill	6"	589406	7035131	0	40	45	50	55
Soe22-15	RC Drill	6"	589335	7035143	0	20	28	35	9
Soe22-16	RC Drill	6"	589334	7035153	0	35	40	45	1
Soe22-17	RC Drill	6"	589331	7035163	0	30	38	45	9
Soe22-18	RC Drill	6"	589331	7035176	0	20	40	45	12
Soe22-19	RC Drill	6"	589320	7035192	0	30	40	45	2.5
Soe22-20	RC Drill	6"	589312	7035206	0	30	38	40	8.5
Soe22-21	RC Drill	6"	589257	7035268	0	20	28	35	4
Soe22-22	RC Drill	6"	589248	7035277	0	25	29	35	15
Soe22-23	RC Drill	6"	589241	7035277	0	22	25	30	1
Soe22-24	RC Drill	6"	589234	7035274	0	10	15	20	0.8
Soe22-25	RC Drill	6"	589226	7035259	0	5	10	15	0.5
Soe22-26	RC Drill	6"	589202	7035246	0	10	14	20	0.25
Soe22-27	RC Drill	6"	589196	7035237	0	17	22	25	0
Soe22-28	RC Drill	6"	589193	7035228	0	22	29	35	2
Soe22-29	RC Drill	6"	589193	7035221	0	20	26	30	5
Soe22-30	RC Drill	6"	589193	7035214	0	24	25	30	11
Soe22-31	RC Drill	6"	589197	7035209	0	20	22	25	8
Soe22-32	RC Drill	6"	589204	7035200	0	12	16	20	3
Soe22-33	RC Drill	6"	589207	7035189	0	10	13	15	2.5
Soe22-34	RC Drill	6"	589212	7035180	0	5	10	15	0
Soe22-35	RC Drill	6"	589264	7035162	0	12	15	20	1
Soe22-36	RC Drill	6"	589274	7035165	0	12	16	20	2
Soe22-37	RC Drill	6"	589285	7035170	0	15	23	25	5
Soe22-38	RC Drill	6"	589337	7035131	0	10	15	20	2.5

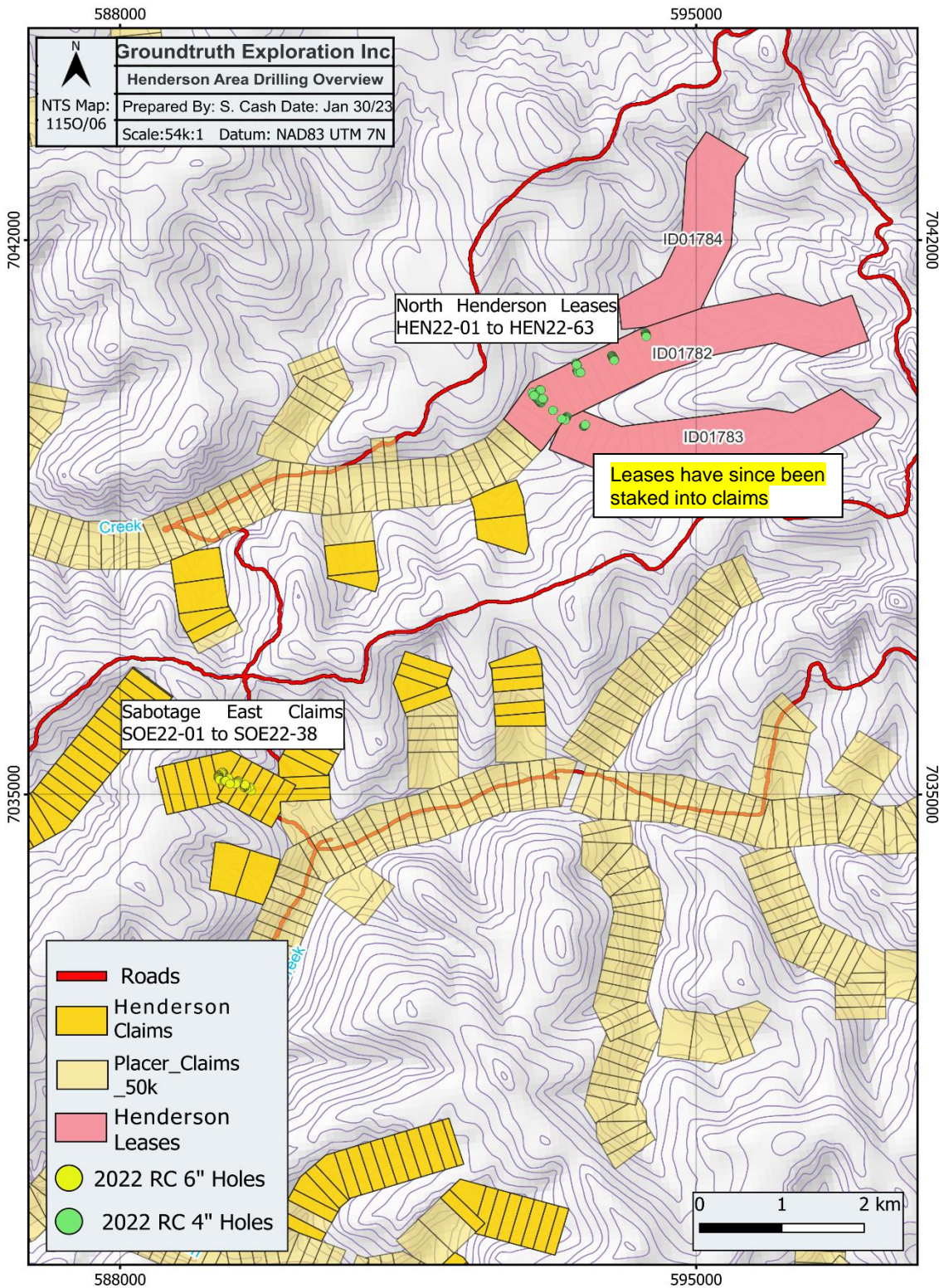


Figure 4: Henderson Area Drilling overview

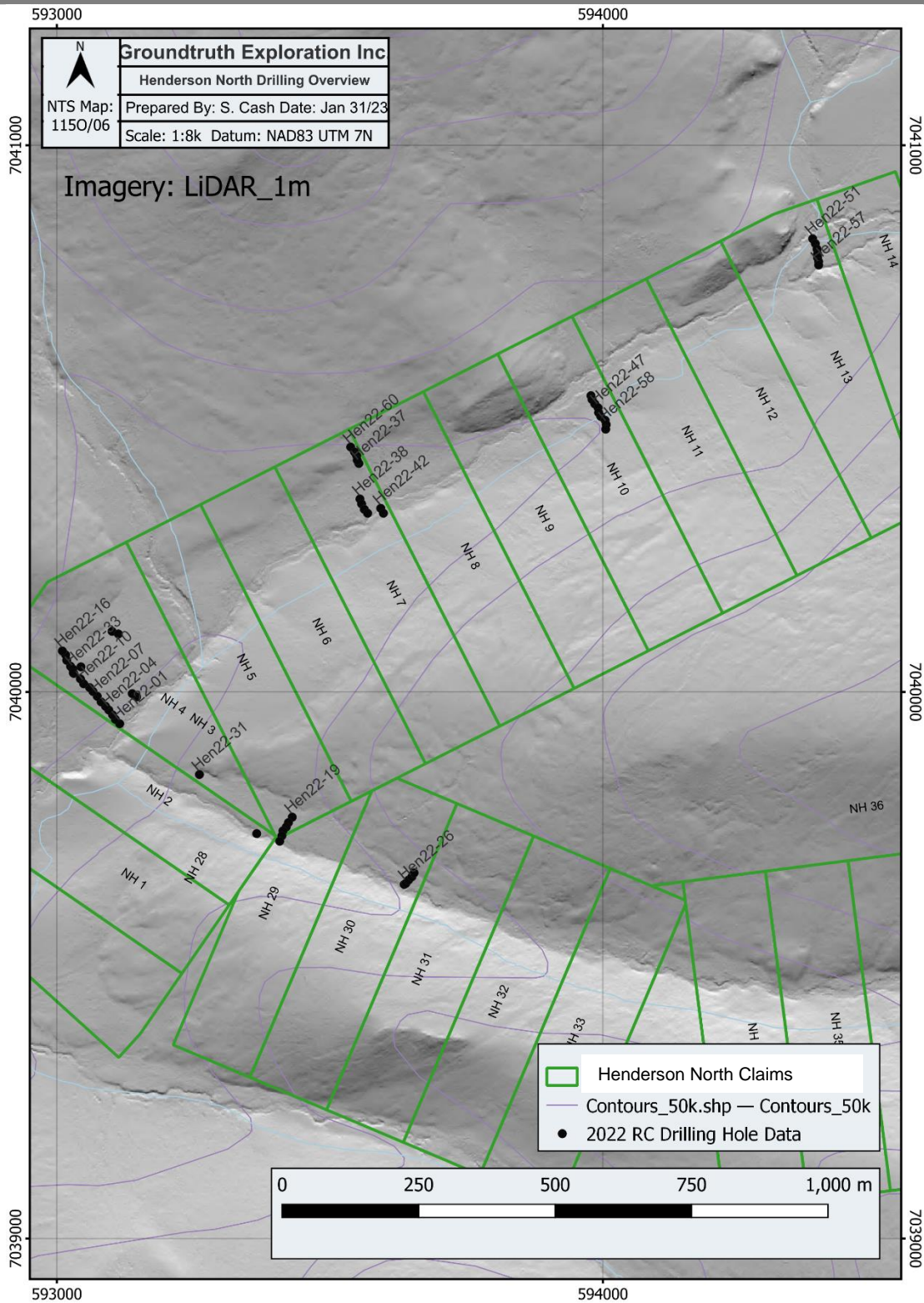


Figure 5: Henderson North Drilling Overview:
Leases ID01782 and ID0783 were staked into claims during the last few days of drilling.

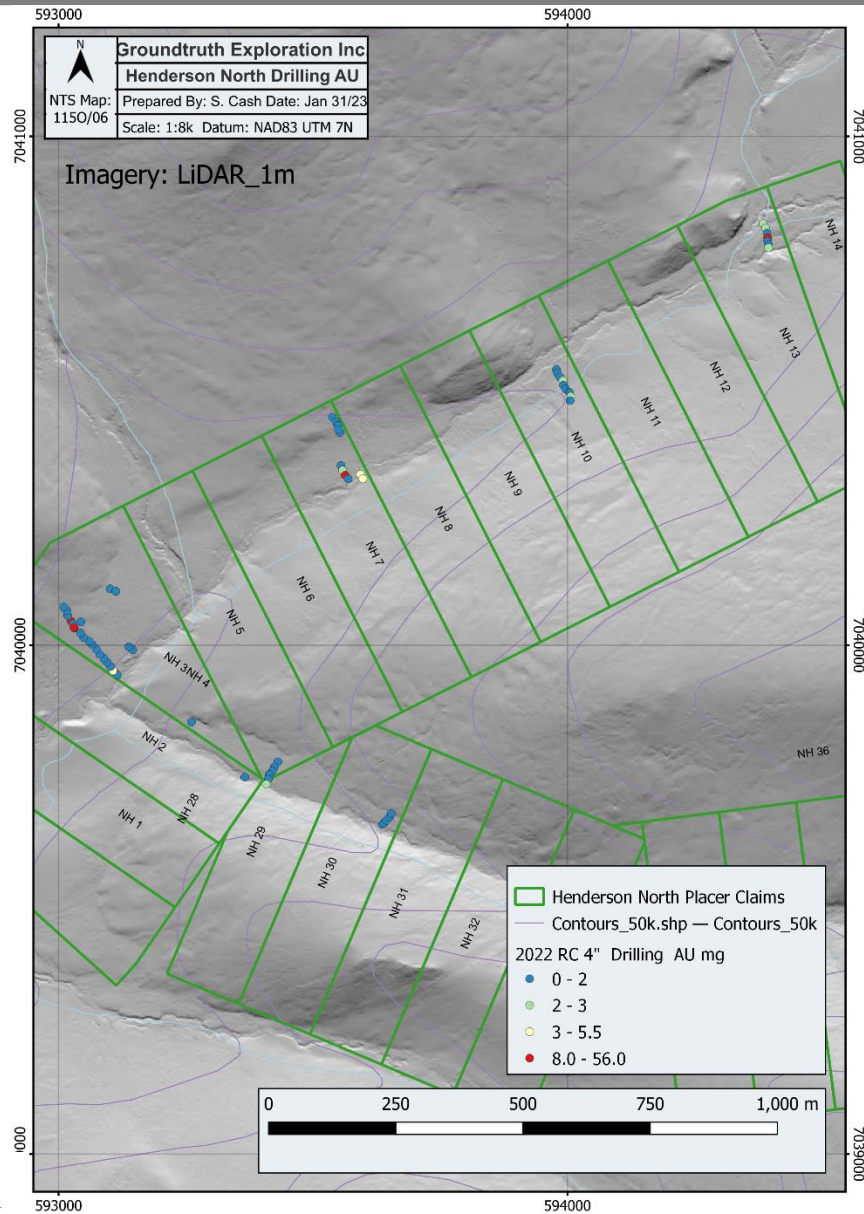


Figure 6: North Henderson Drilling AU



Yukon Geological Survey- Placer Drilling Grade Calculator INPUTS						RESULTS		
Drill hole diameter (inches)	Length of sample (inches)	Gold in drill sample (mg)	fineness of gold (%)	Gold price (CDN)	Volume of sample (cubic yds)	Grade (\$ per bank cubic yard)	Fine ounces per cubic yard	Fine grams per cubic meter
5.00	36.00	2	85.00	\$ 2,600.00	0.015150	\$ 9.38	0.004	0.147
5.00	36.00	3	85.00	\$ 2,600.00	0.015150	\$ 14.07	0.005	0.220
5.00	36.00	5.5	85.00	\$ 2,600.00	0.015150	\$ 25.79	0.010	0.404
5.00	36.00	8	85.00	\$ 2,600.00	0.015150	\$ 37.52	0.014	0.587
5.00	36.00	50	85.00	\$ 2,600.00	0.015150	\$ 234.49	0.090	3.669

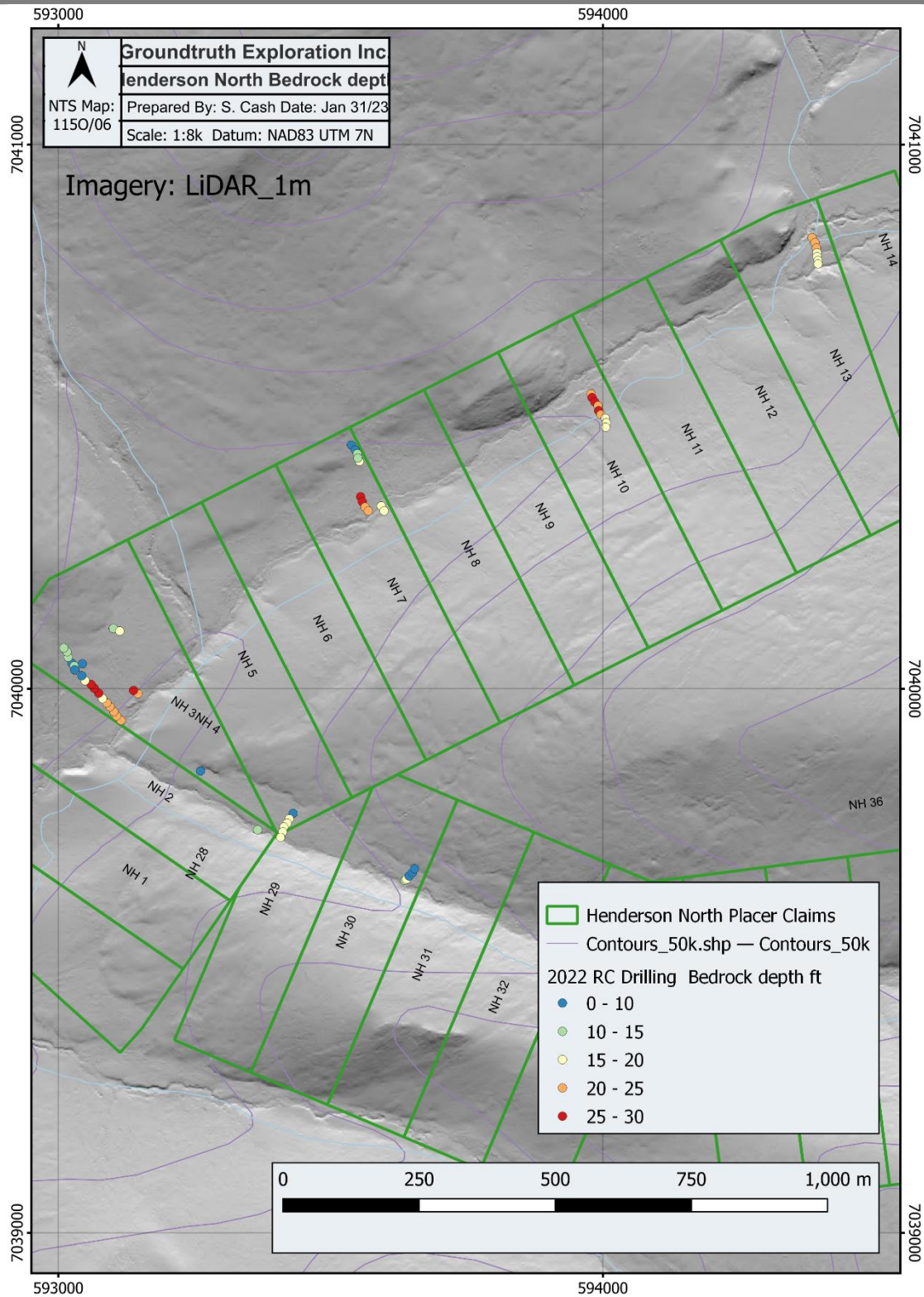


Figure 7: North Henderson Bedrock depths

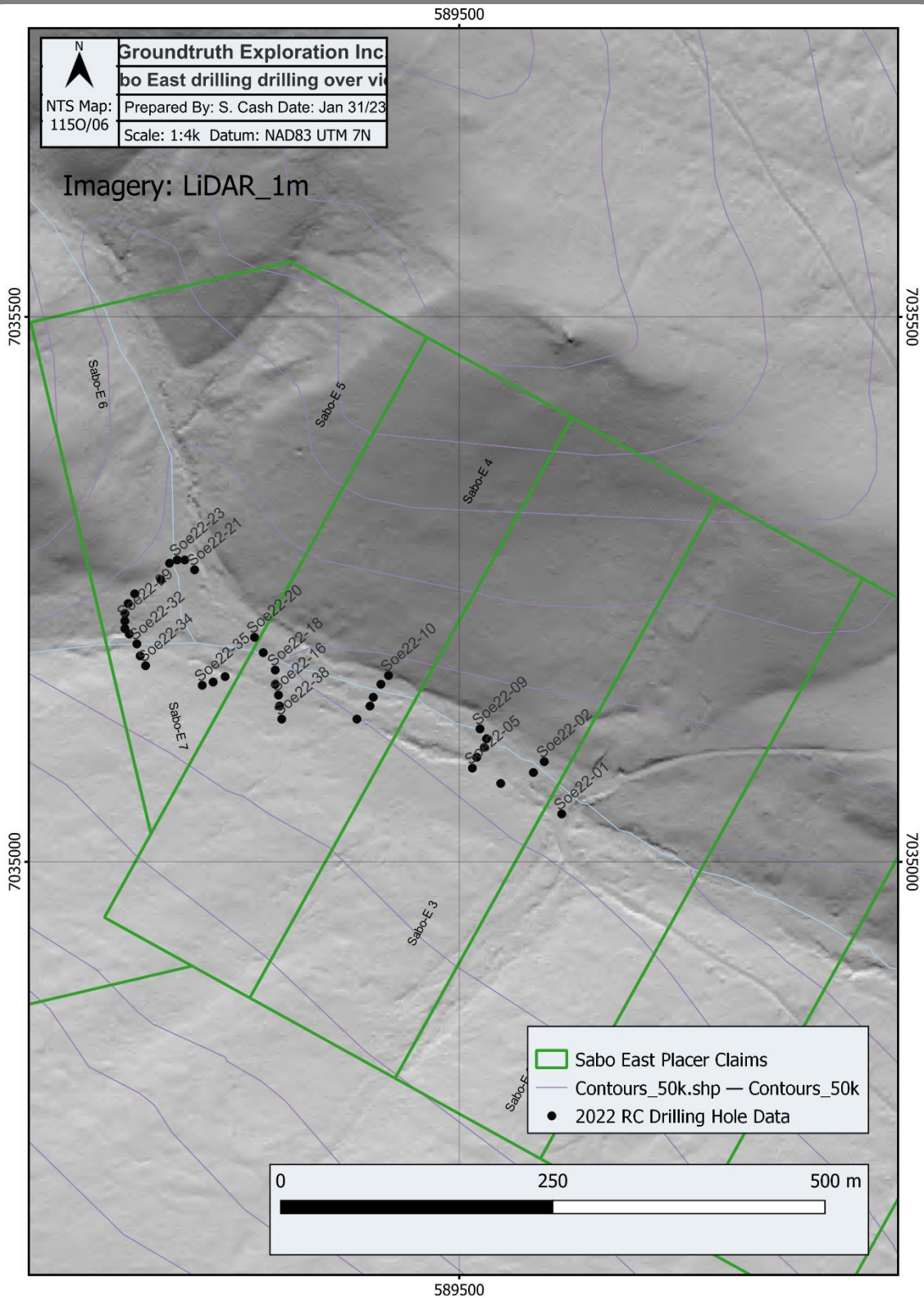


Figure 8: Sabo East Drilling Overview

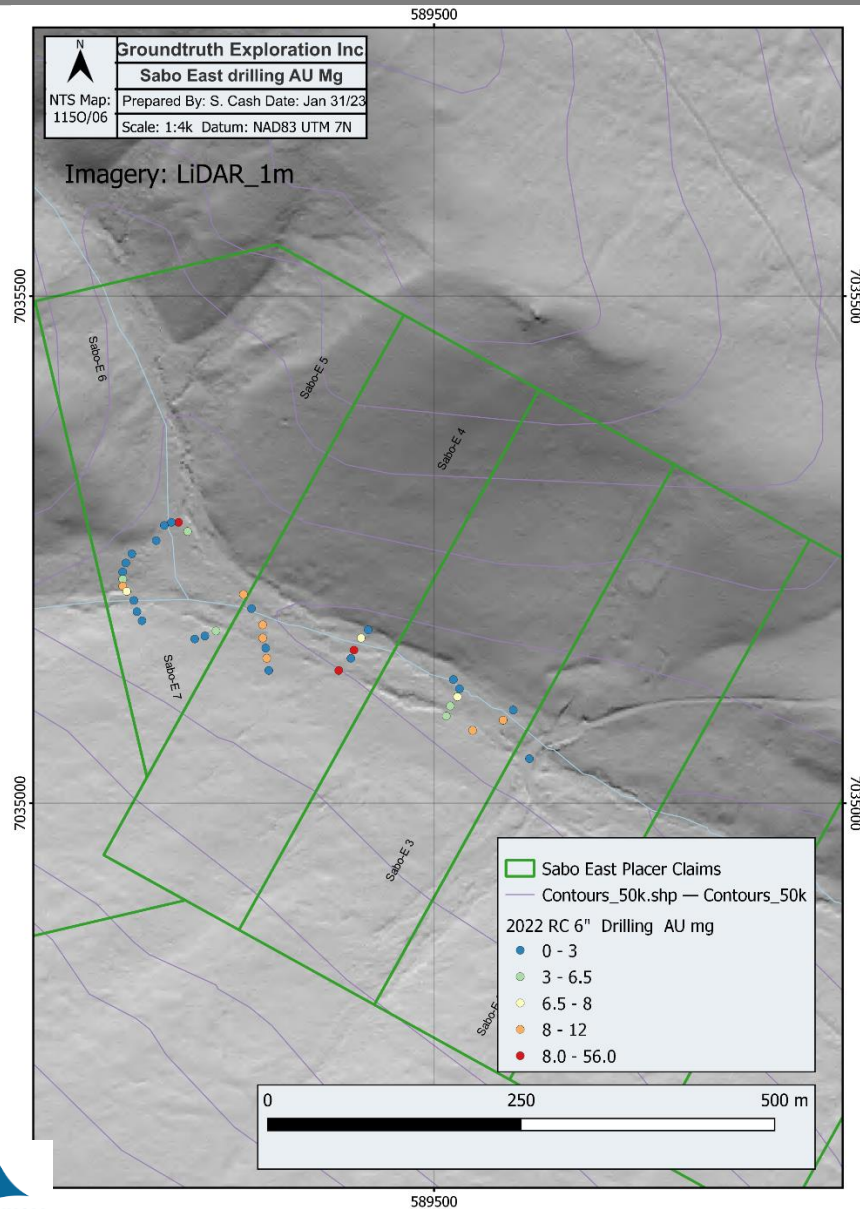


Figure 9: Sabo East Drilling AU

Yukon Geological Survey- Placer Drilling Grade Calculator INPUTS						RESULTS		
Drill hole diameter (inches)	Length of sample (inches)	Gold in drill sample (mg)	fineness of gold (%)	Gold price (CDN)	Volume of sample (cubic yds)	Grade (\$ per bank cubic yard)	Fine ounces per cubic yard	Fine grams per cubic meter
6.00	36.00	3	85.00	\$ 2,600.00	0.021817	\$ 9.77	0.004	0.153
6.00	36.00	6.5	85.00	\$ 2,600.00	0.021817	\$ 21.17	0.008	0.331
6.00	36.00	8	85.00	\$ 2,600.00	0.021817	\$ 26.05	0.010	0.408
6.00	36.00	12	85.00	\$ 2,600.00	0.021817	\$ 39.08	0.015	0.611
6.00	36.00	56	85.00	\$ 2,600.00	0.021817	\$ 182.38	0.070	2.854

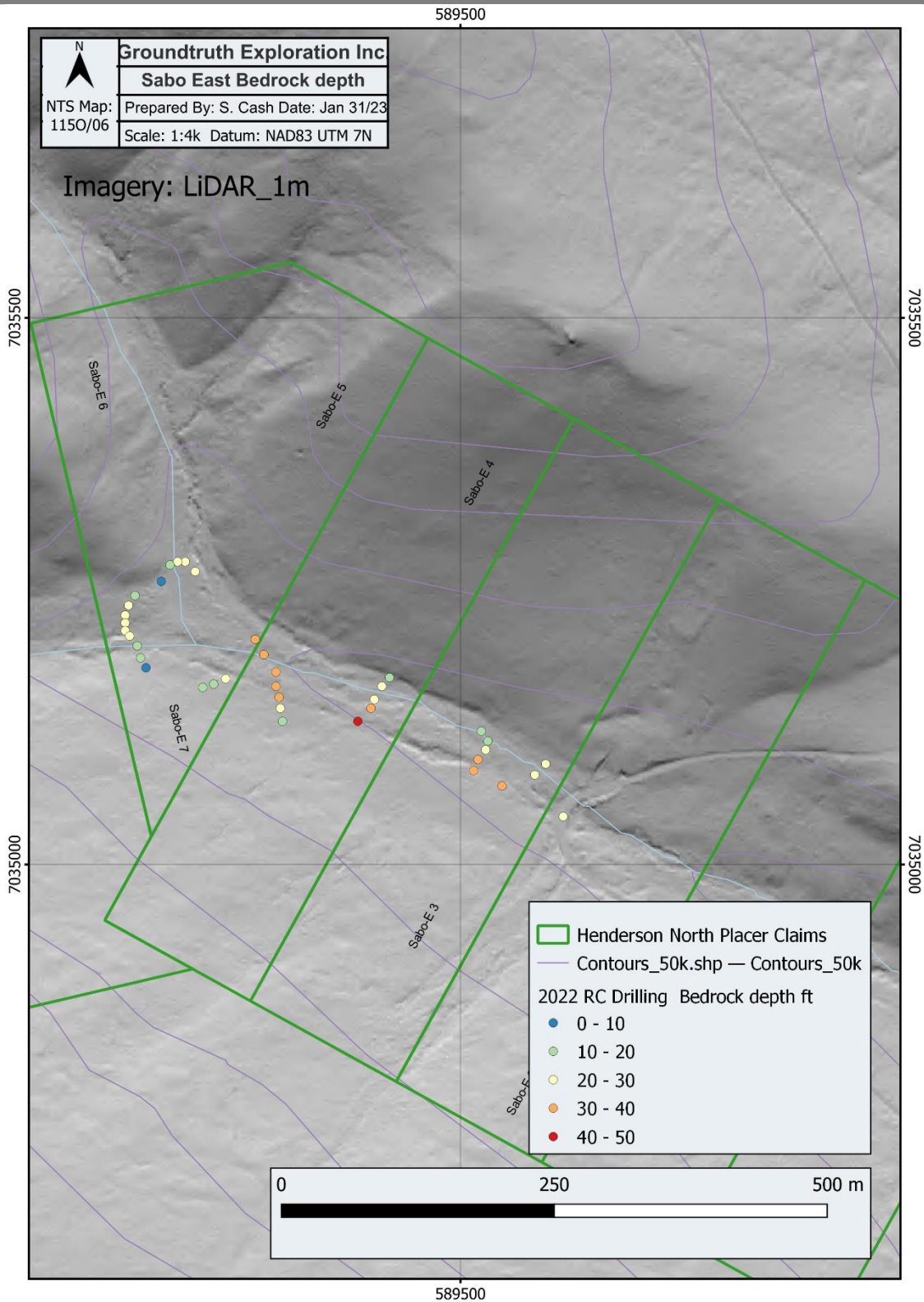


Figure 10: Sabo East Bedrock depths

7 Discussion and Interpretation

Sabotage East Claims

The 2022 Sabotage East RC Program Successfully confirmed the previous high-grade holes and expanded the Sabotage East target further upstream. The bedrock dipped on the southwest bank and showed good gold. Terrain was difficult to get traditional drill line fences across the creek. The Sabotage east target is still open to expand further up both tribs.

North Henderson Claims

The 2022 North Henderson RC Program successfully discovered new ground. The creek coming off the south side of the Henderson dome did not drill any good results and the results were coming down the north drainages. More infill drilling at tighter line spacing will be needed to prove the channel width and possibly some bulk testing if the gold proves to be coarse and hard to drill. There is an active placer operation downstream around the corner working their way upstream which will help for future access for drilling.

8 Recommendations

It is recommended to 1) Expand both the Sabotage East and North Henderson upstream further with more drilling. 2) Complete infill drilling on both creeks to further understand the bedrock depths and narrow down the pay channel width. 3) Bulk test various results across both targets to further understand the gold distribution and size throughout the pay layers by means of shafting or excavator due to the close road access on both claims.

9 Expenditures

RAB Drilling, Fuel, Camp and onsite Sluicing

GroundTruth Exploration Inc., Crew of 5: June 29 to July 7, Aug 18-31

\$125,400.00

\$5,700/ Shift (all incl.) x22 shifts

Helicopter Support

Great Slave Helicopters:

\$3,213.00

\$3,213.00

Report Writing:

\$2,500.00

Grand Total: \$131,113.00

10 Qualification

I, Simon Cash of Whitehorse, Yukon, do hereby certify that:

1. I have worked in the mineral exploration field since 2016.
2. From 2016 to 2023 I worked for GroundTruth Exploration Inc.
3. I am not aware of any material fact or material change with respect to the subject matter of this report, the omission to disclose which makes this report misleading.
4. This report is compiled of data from drilling programs carried out under my supervision.

Dated this 31st day of January 2023

Respectfully submitted,



Simon Cash

11 References

Regional Geology: Colpron, M., Israel, S., Murphy, D.C., Pigage, L.C., and Moynihan, D., 2016. Yukon Bedrock Geology Map. Yukon Geological Survey, Open File 2016-1.

Regional Geology: Yukon Mining Map Viewer, Mining Claims Database –
<http://mapservices.gov.yk.ca/Mining/Load.htm>

Mineral Titles: Yukon Mining Recorder, Mining Claims Database –
www.yukonminingrecorder.ca

Topographic data: Natural Resources Canada, The Atlas of Canada - Toporama-
<http://atlas.gc.ca/toporama/en/index.html>

Colpron, M., Nelson, J. L., and Murphy, D. C., 2006. A tectonostratigraphic framework for the pericratonic terranes of the Norther Cordillera: Canadian and Alaskan Cordillera: Geologic Association of Canada, p. 1 – 23.

Mortensen, J.K. and Allan, M.M., 2012. Summary of the Tectonic and Magmatic Evolution of Western Yukon and Eastern Alaska. In Yukon Gold Project Final Technical Report, Edited by Allan, M.M., Hart, C.J.R., and Mortensen, J.K. Mineral Deposit Research Unit, University of British Columbia, p. 7 – 10.

Mortensen, J. K., and Hart, C. J. R., 2010. Late and Post-Accretionary Magmatism and Metallogeny in the Norther Cordillera, Yukon and Eastern Alaska. Geological Society of America Annual Meeting, Denver, 31 October to 3 November 2010.

Nelson, J., Colpron, M., and Israel, S., 2013. The Cordillera of British Columbia, Yukon and Alaska: tectonics and metallogeny. In: Colpron, M., Bissig, T., Rusk, B., and Thompson, J.F.H., (Editors), Tectonics, Metallogeny, and Discovery - the North American Cordillera and similar accretionary settings. Society of Economic Geologists, Special Publication 17: 53-109.

Roots, C., Nelson, J., Mihalynuk, M. G., Harms, T. A., De Keijzer, M., and Simard, R. L., 2004. Bedrock Geology of Dorsey Lake, Yukon Territory. Yukon Geological Survey, Geological Survey of Canada, Open File 4630.

Ryan, J. J., Zagorevski, A., Williams, S. P., Roots, C., Ciolkiewicz, W., Hayward, N., and Chapman, J. B., 2013. Geology of Stevenson Ridge (northeastern part), Yukon; Geological Survey of Canada, Canadian Geoscience Map 116 and 117

13 Appendice

Appendix A: Downhole Drill Data

Hole ID	Muck Start ft	Muck End ft	Gravel Start ft	Gravel End ft	Bedrock start ft	total depth
Hen22-01	0	10	10	22.5	22.5	25
Hen22-02	0	12	12	25	25	30
Hen22-03	0	12	12	23	23	30
Hen22-04	0	12	12	23	23	25
Hen22-05	0	18	18	23	23	30
Hen22-06	0	15	15	20	20	25
Hen22-07	0	17	17	26	26	30
Hen22-08	0	18	18	30	30	35
Hen22-09	0	17	17	30	30	35
Hen22-10	0	10	10	19	19	25
Hen22-11	0	7	7	10	10	20
Hen22-12	0	4	4	11	11	15
Hen22-13	0	4	4	9	9	15
Hen22-14	0	3	3	13	13	25
Hen22-15	0	4	4	15	15	25
Hen22-16	0	4	4	15	15	25
Hen22-17	0	5	5	13	13	20
Hen22-18	0	6	6	19	19	25
Hen22-19	0	10	10	15	15	20
Hen22-20	0	10	10	16	16	20
Hen22-21	0	13	13	18	18	20
Hen22-22	0	13	13	20	20	25
Hen22-23	0	13	13	18	18	25
Hen22-24	0	8	8	16	16	20
Hen22-25	0	8	8	15	15	20
Hen22-26	0	10	10	18	18	25
Hen22-27	0	3	3	8	8	15
Hen22-28	0	3	3	8	8	10
Hen22-29	0	3	3	6	6	10
Hen22-30	0	10	10	15	15	20
Hen22-31	0	4	4	8	8	10
Hen22-32	0	5	5	10	10	15

Hole ID	Muck Start ft	Muck End ft	Gravel Start ft	Gravel End ft	Bedrock start ft	total depth
Hen22-33	0	5	5	11	11	15
Hen22-34	0	5	5	10	10	15
Hen22-35	0	10	10	21	21	25
Hen22-36	0	15	15	26	26	30
Hen22-37	0	11	11	16	16	20
Hen22-38	0	5	5	30	30	35
Hen22-39	0	12	12	26	26	35
Hen22-40	0	10	10	24	24	30
Hen22-41	0	12	12	24	24	30
Hen22-42	0	10	10	20	20	25
Hen22-43	0	8	8	18	18	25
Hen22-44	0	6	6	25	25	30
Hen22-45	0	5	5	27	27	35
Hen22-46	0	6	6	27	27	35
Hen22-47	0	6	6	25	25	30
Hen22-48	0	5	5	26	26	35
Hen22-49	0	5	5	24	24	30
Hen22-50	0	6	6	20	20	25
Hen22-51	0	8	8	24	24	30
Hen22-52	0	8	8	23	23	25
Hen22-53	0	8	8	23	23	25
Hen22-54	0	8	8	20	20	25
Hen22-55	0	8	8	20	20	25
Hen22-56	0	9	9	20	20	25
Hen22-57	0	8	8	19	19	25
Hen22-58	0	6	6	17	17	20
Hen22-59	0	6	6	19	19	25
Hen22-60	0	2	2	6	6	10
Hen22-61	0	5	5	10	10	15
Hen22-62	0	6	6	15	15	15
Hen22-63	0	6	6	14	14	25

Hole ID	Muck Start ft	Muck End ft	Gravel Start ft	Gravel End ft	Bedrock start ft	total depth
Soe22-01	0	15	15	30	30	35
Soe22-02	0	8	8	25	25	30
Soe22-03	0	12	12	25	25	30
Soe22-04	0	25	25	35	35	40
Soe22-05	0	27	27	35	35	40
Soe22-06	0	24	24	35	35	40

Hole ID	Muck Start ft	Muck End ft	Gravel Start ft	Gravel End ft	Bedrock start ft	total depth
Soe22-07	0	15	15	27	27	35
Soe22-08	0	10	10	20	20	25
Soe22-09	0	10	10	16	16	20
Soe22-10	0	8	8	15	15	20
Soe22-11	0	15	15	25	25	30
Soe22-12	0	10	10	30	30	35
Soe22-13	0	30	30	37	37	45
Soe22-14	0	40	40	45	45	50
Soe22-15	0	20	20	28	28	35
Soe22-16	0	35	35	40	40	45
Soe22-17	0	30	30	38	38	45
Soe22-18	0	20	20	40	40	45
Soe22-19	0	30	30	40	40	45
Soe22-20	0	30	30	38	38	40
Soe22-21	0	20	20	28	28	35
Soe22-22	0	25	25	29	29	35
Soe22-23	0	22	22	25	25	30
Soe22-24	0	10	10	15	15	20
Soe22-25	0	5	5	10	10	15
Soe22-26	0	10	10	14	14	20
Soe22-27	0	17	17	22	22	25
Soe22-28	0	22	22	29	29	35
Soe22-29	0	20	20	26	26	30
Soe22-30	0	24	24	25	25	30
Soe22-31	0	20	20	22	22	25
Soe22-32	0	12	12	16	16	20
Soe22-33	0	10	10	13	13	15
Soe22-34	0	5	5	10	10	15
Soe22-35	0	12	12	15	15	20
Soe22-36	0	12	12	16	16	20
Soe22-37	0	15	15	23	23	25
Soe22-38	0	10	10	15	15	20

