

INFORMAL SUMMARY

HOP – ACME CLAIM GROUP

WHITEHORSE MINING DISTRICT

NTS 115 H YUKON

January, 2000

*105 Copy
Jan 2000*

HOP-ACME CLAIM GROUP DATA

WHITEHORSE MINING DISTRICT, YUKON

PROSPECT TYPE:- Copper – Gold bearing skarns

LOCATION :- Northwest of Whitehorse, Yukon. Map sheet NTS 115H / 7

OWNER:- J. Cameron Stephen

HISTORY

The copper – gold bearing 'Hopkins' skarn showing has been staked and re-staked since 1907 and was reported on by Cairnes in 1909. Hudson Bay Mining and Smelting worked in the area in 1954 but no serious exploration of the main skarn horizon was attempted until Whitehorse Copper Mines, a subsidiary of HBM&S, drilled the showing in 1977 and 1978. Some significant drill intersections were obtained.

In 1979, New Ridge Resources Ltd. drilled a number of two inch diameter percussion holes. Data for that work has been poorly recorded with only average grades for the more important intersections having been located.

In 1989 the prospectors holding the claims optioned the property to Casau Exploration Ltd., a company with which J.C. Stephen was associated. Systematic geological mapping and magnetometer surveying was conducted. Not all of the prospective area was covered. Five diamond drill holes (376 metres) were drilled in the vicinity of the main showing.

The geological mapping, conducted by Casau Explorations Ltd., indicated that several separate skarn horizons exist. Copper and gold values occur in several zones aside from the main showing where most of the exploration has been focused.

POTENTIAL

The main zone, Hopkins, which has received the bulk of previous exploration drilling, shows a mineralized zone with an estimated 600,000 tons grading 1.09% copper. The gold content is poorly documented but is presumed to be in the order of 0.02 ounces gold per ton. The gold content is not proportional to the copper content of the mineralization.

The steep west facing ridge, to the east of Hopkins Lake, provides some 1,000 feet of vertical relief. Geological mapping, and the magnetometer survey conducted by Casau,, shows that mineralization occurs in several other parts of the No. I Skarn Horizon as well as in additional skarn horizons stacked conformably as shallow dipping beds over a strike length in excess of one kilometre. Only a few grab samples have been taken from these mapped extensions. Of particular interest is an assay of 0.183 ounces gold and 0.59% copper obtained from a specimen sample of massive pyrrhotite mineralization in Skarn Horizon No. III.

ACCESS AND FACILITIES

The property is 120 kilometres northwest of Whitehorse. Travel by road is over 120 kilometres of paved highway and 48 kilometres of gravel road to Hopkins Lake. Access on the property itself is by steep four wheel drive road from the gravel road to the plateau at an elevation of about 4,500 feet. A system of four wheel drive roads gives access to much of the area north from Hopkins Creek.

There are no camp facilities on the property. Water supply is readily available from Hopkins Creek and other small water courses.

PROPERTY STATUS

The claim group consists of the ACME 1-13 claims, expiry date 2000/12/30; and the :-
HOP 1-16; 20-27; 31-43; 45, 47, 49; 51, 53, 55, 57, 59, 61; 63-65 claims, expiry date 2000/3/31.

These claims are held 100% in the name of J. Cameron Stephen.

ATTACHED DATA AND DIAGRAMS

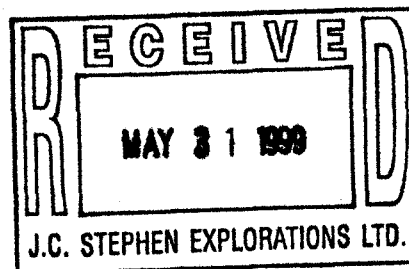
- 1) Most recent "Quartz Renewal Certificate" copy for HOP Claims.
- 2) Figure 1 Claim Locations Scale 1:25,000 approx.
- 3) Figure 2 Photocopy of air photo, scale 1:15,840 approx. Shows Aishihik gravel road, Hopkins Lake and Hopkins Creek.
- 4) Figure 3 Portion of aeromagnetic map 115 H at scale of 1:250,000 with location of Hop-Acme.
- 5) Figure 4 Aeromagnetic Map at scale of 1: 63,360 showing location of Franklin Creek skarn in relation to the magnetic anomaly in more detail.
- 5) Copy of text and diagram of drill holes from Annual Report, Whitehorse Copper, 1977.
- 6) Figure 5 Map of Copper Gold Skarns, from Casau Exploration Ltd. data, showing assays of grab samples taken during mapping.

This summary has been prepared from data owned by J.C. Stephen. The property is available for option. Copies of various reports can be made available for examination by interested parties.

J.C. Stephen



QUARTZ RENEWAL CERTIFICATE
Section 54 & 57
YUKON QUARTZ MINING ACT



Whitehorse Mining District


Payment In Lieu

Claim Name	Grant Number	Renewal Term	Expiry Date
HOP 1 - 16	YB25531 - YB25546	1	31 Mar 2000
HOP 20 - 27	YB25550 - YB25557	1	31 Mar 2000
HOP 31 - 43	YB25561 - YB25573	1	31 Mar 2000
HOP 45	YB25575	1	31 Mar 2000
HOP 47	YB25577	1	31 Mar 2000
HOP 49	YB25579	1	31 Mar 2000
HOP 51	YB25581	1	31 Mar 2000
HOP 53	YB25583	1	31 Mar 2000
HOP 55	YB25585	1	31 Mar 2000
HOP 57	YB25587	1	31 Mar 2000
HOP 59	YB25589	1	31 Mar 2000
HOP 61	YB25591	1	31 Mar 2000
HOP 63 - 65	YB25593 - YB25595	1	31 Mar 2000

This is to certify that payment in lieu of assessment work and renewal certificate fees in the amount of \$5,145.00 was received and filed in my office on the 11 March 1999 with respect to the above claim(s); and in accordance with Section 57 of the Yukon Quartz Mining Act, I do now issue this certificate of renewal in respect of these claim(s) to:

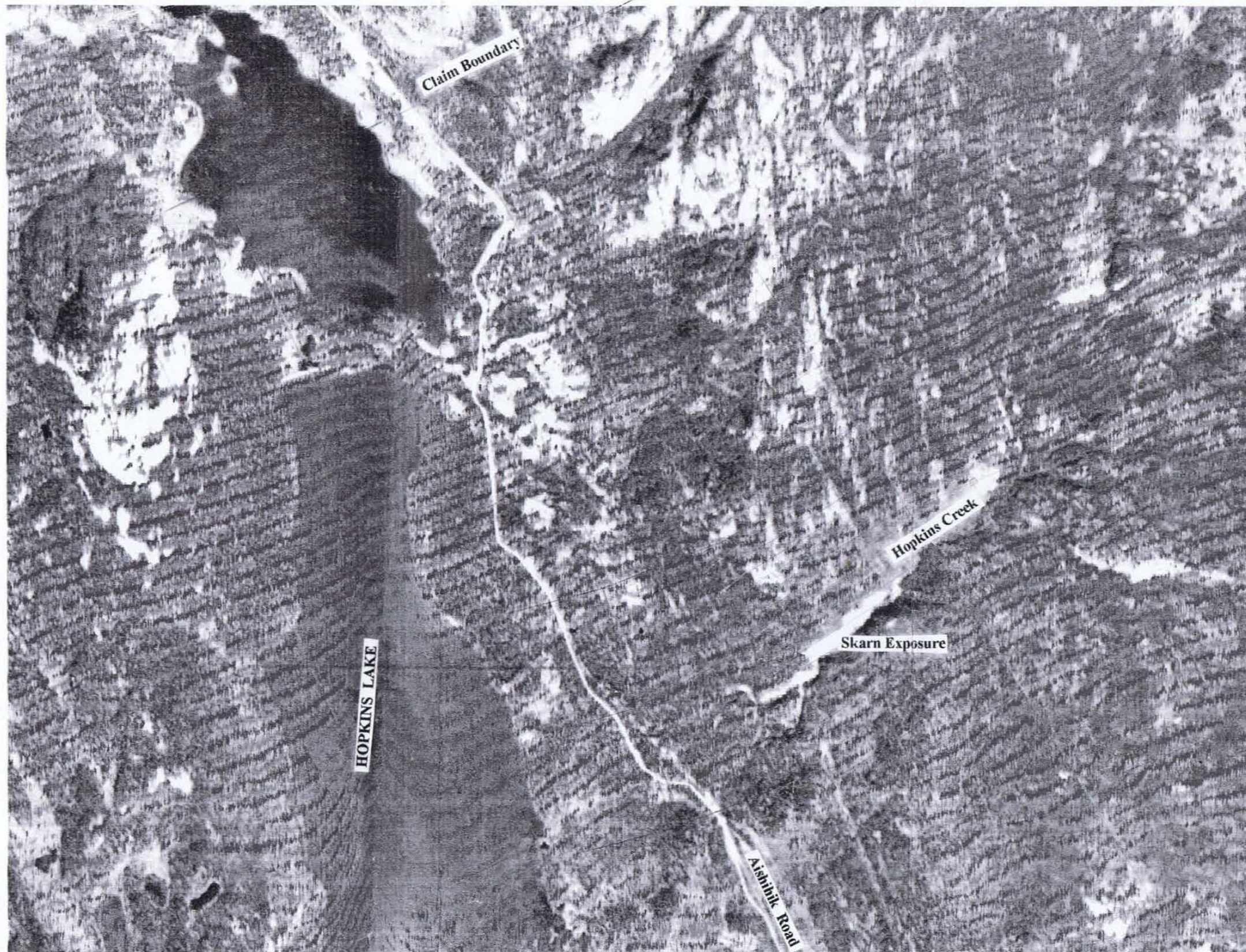
J. Cameron Stephen 100.00 %

This certificate entitles the owners to continue in possession of the said claims.

Receipt Number: C112346 Fees: \$5,145.00 Filing Date: 11 March 1999	 <hr/> Rona Clark Whitehorse Mining Recorder
---	--

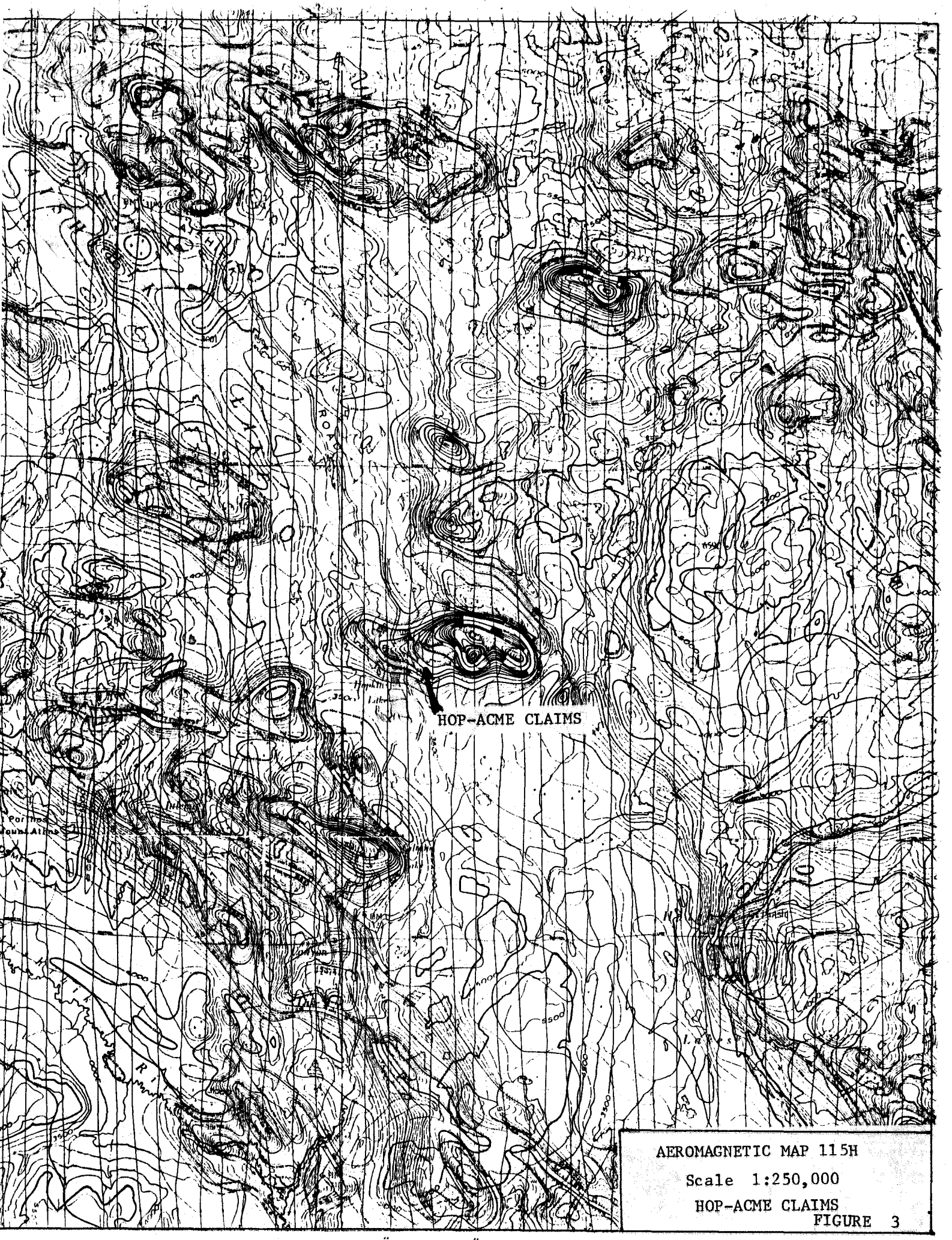


J.C. Stephen Explorations Ltd.
HOP-ACME CLAIM GROUP
Whitehorse Mining Division
Scale: 1:25,000 FIGURE 1



HOP-ACME CLAIM GROUP
AIR PHOTO PHOTOCOPY

Scale 1:15,840 FIGURE 2



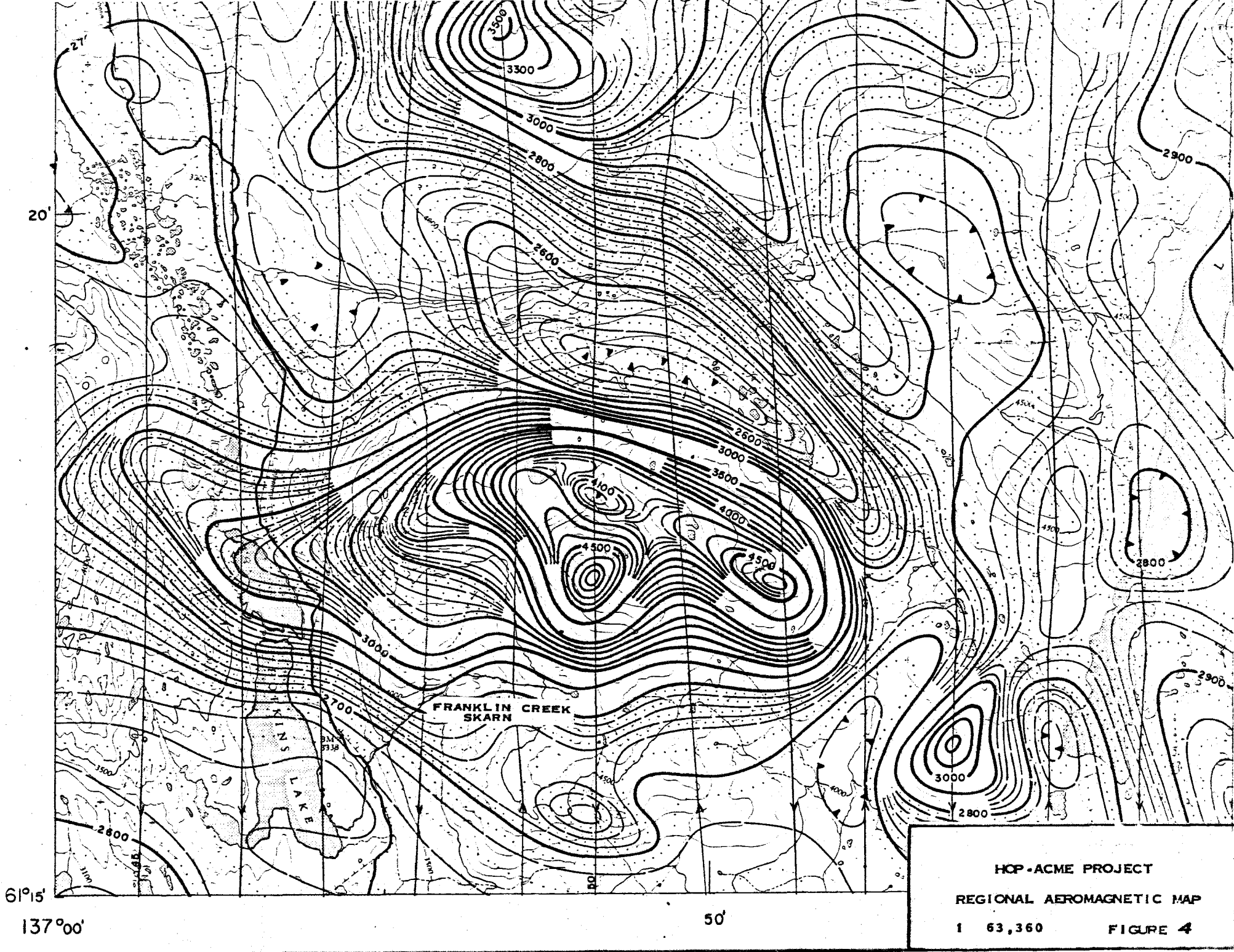
HOP-ACME CLAIMS

AEROMAGNETIC MAP 115H

Scale 1:250,000

HOP-ACME CLAIMS

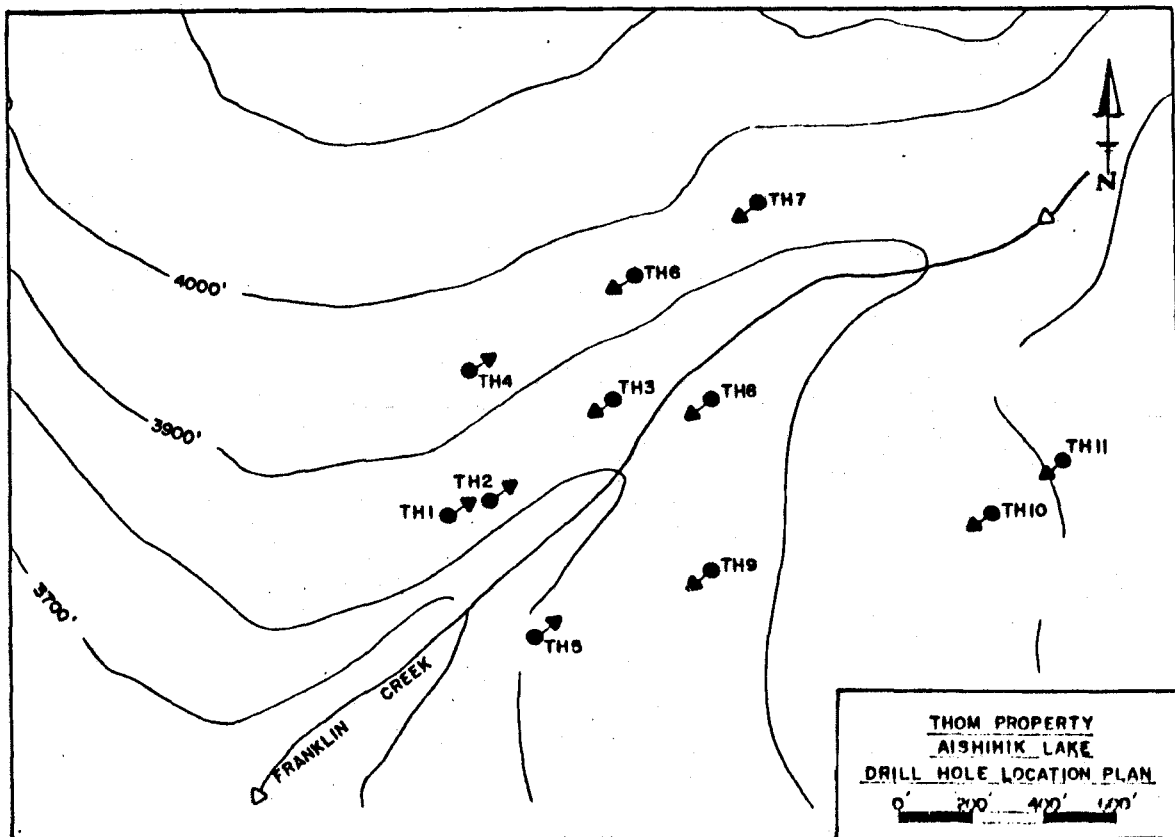
FIGURE 3

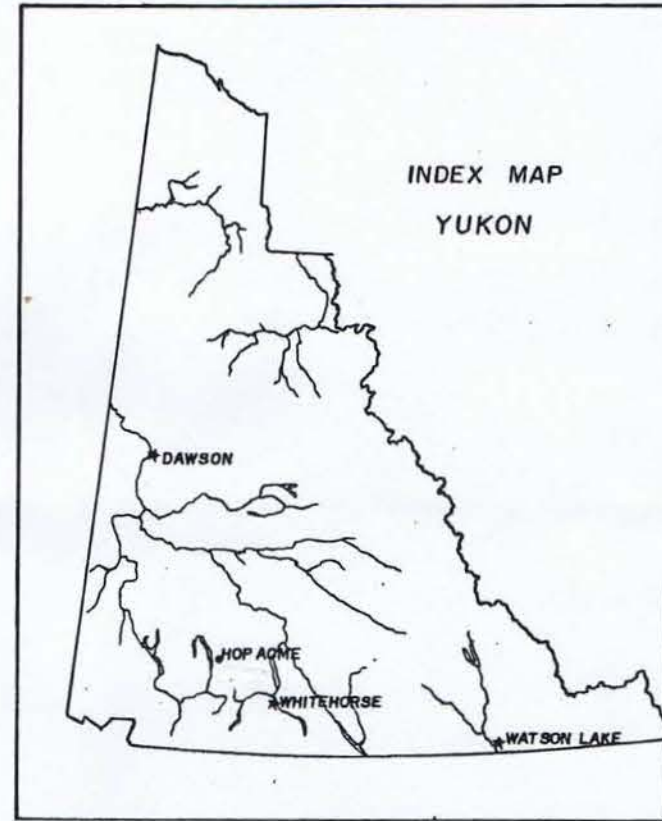
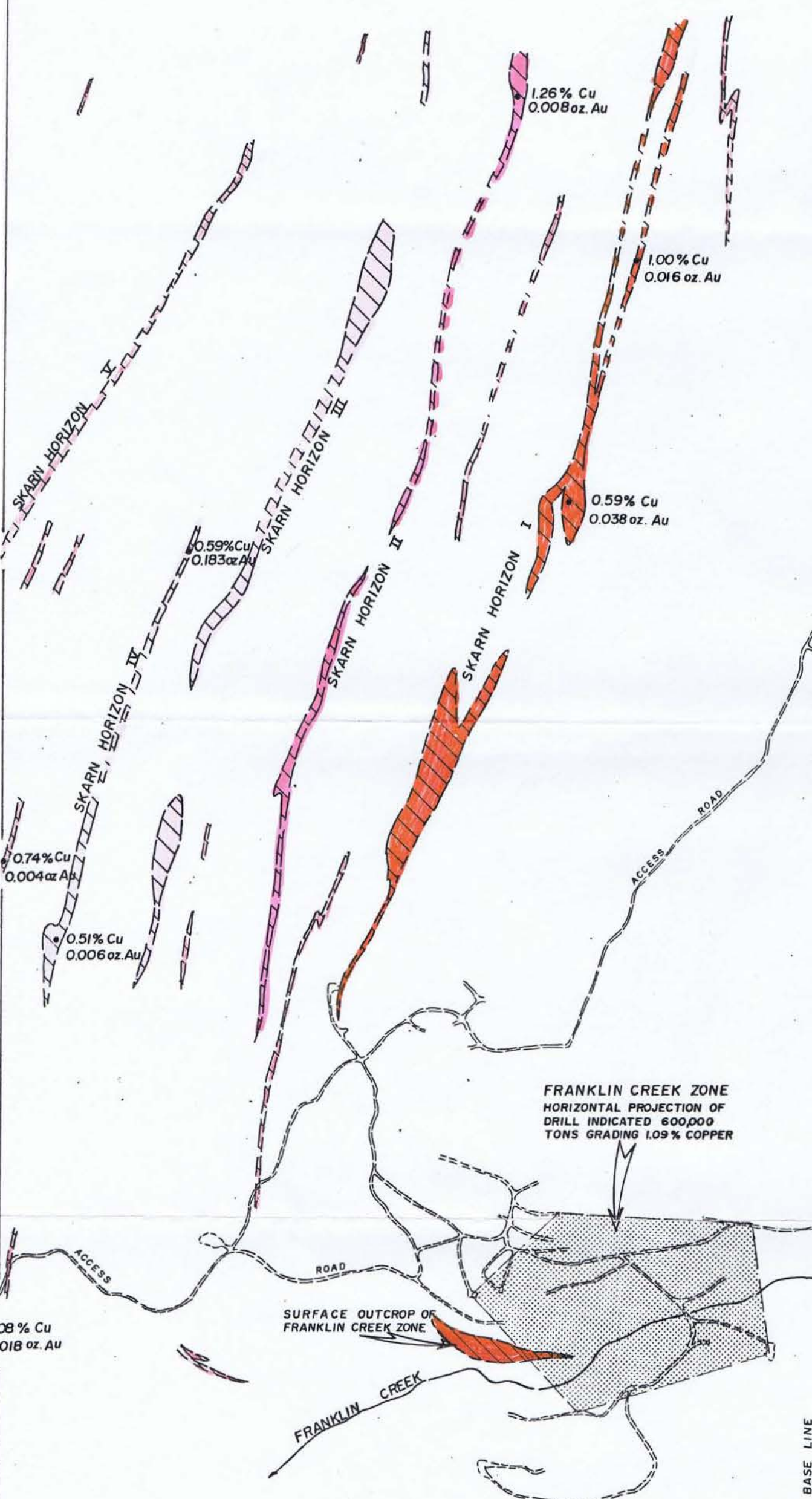


HOP-ACME PROJECT
REGIONAL AEROMAGNETIC MAP
1 63,360 FIGURE 4


The Company controls by option and staking a group of 82 claims at Mile 33 of the Aishihik Lake road, some 70 miles northwest of Whitehorse. During June and July a total of eleven surface diamond drill holes were completed on the property for an aggregate depth drilled of 3,573 feet. Results indicate the existence of a gently dipping layer of skarn mineralized with copper (chalcopyrite) over an area of 800 by 1,000 feet. The thickness of significant mineralization varied up to 30 feet and one intersection with a calculated grade of 1.94% copper was obtained over an estimated true width of 46.7 feet (core length was 61 feet). The zone so far drilled is not currently economic but the mineralization is open to the north and the potential for more mineralization in this direction is considered high. Further work will be carried out on the property in 1978. The drilling results are tabulated below and hole locations are given on the accompanying map:

TH- 1 (707 ft. @ -65°)	traces copper
TH- 2 (253 ft. @ -60°)	77.2 - 138.2 = 61.0 ft. @ 1.94% Cu
TH- 3 (206 ft. @ -70°)	in dyke
TH- 4 (253 ft. @ -70°)	184.9 - 214.2 = 29.4 ft. @ 1.36% Cu
TH- 5 (152 ft. @ -80°)	in overburden
TH- 6 (320 ft. @ -80°)	188.2 - 203.4 = 15.2 ft. @ 1.72%Cu
TH- 7 (351 ft. @ -80°)	traces copper
TH- 8 (318 ft. @ -80°)	206.0 - 220.1 = 14.1 ft. @ 1.27% Cu
TH- 9 (290 ft. @ -80°)	210.2 - 213.3 = 3.1 ft. @ 3.06% Cu
TH-10 (106 ft. @ -80°)	in dyke
TH-11 (617 ft. @ -80°)	in schist and dyke — mineralized horizon not present in drill hole





LEGEND

 SURFACE TREND OF SKARN ZONE AS INDICATED BY MAPPING AND BY MAGNETOMETER SURVEY



HOP-ACME PROJECT
MAP OF COPPER GOLD SKARNS