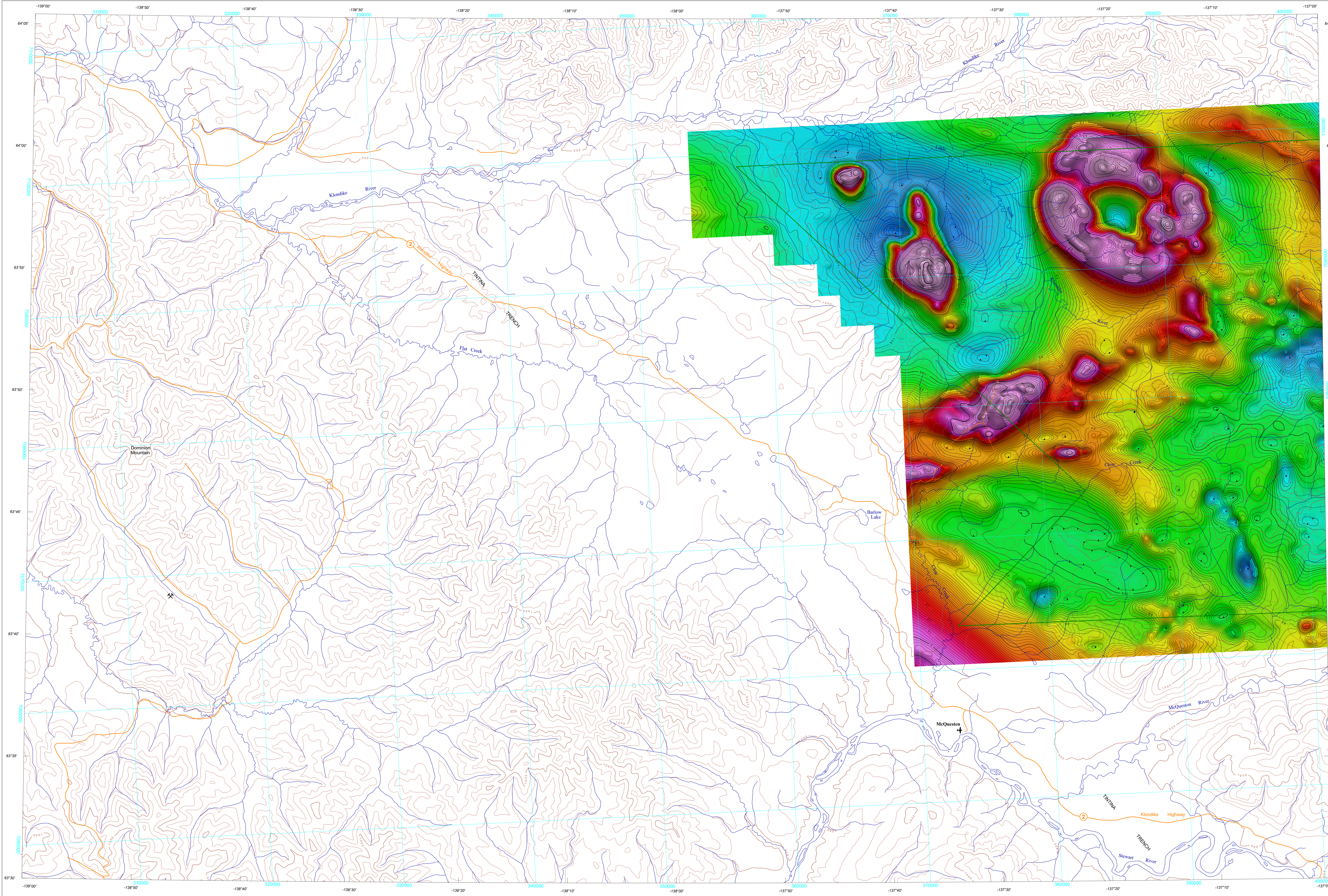


RESIDUAL TOTAL MAGNETIC FIELD



Residual Total Magnetic Field

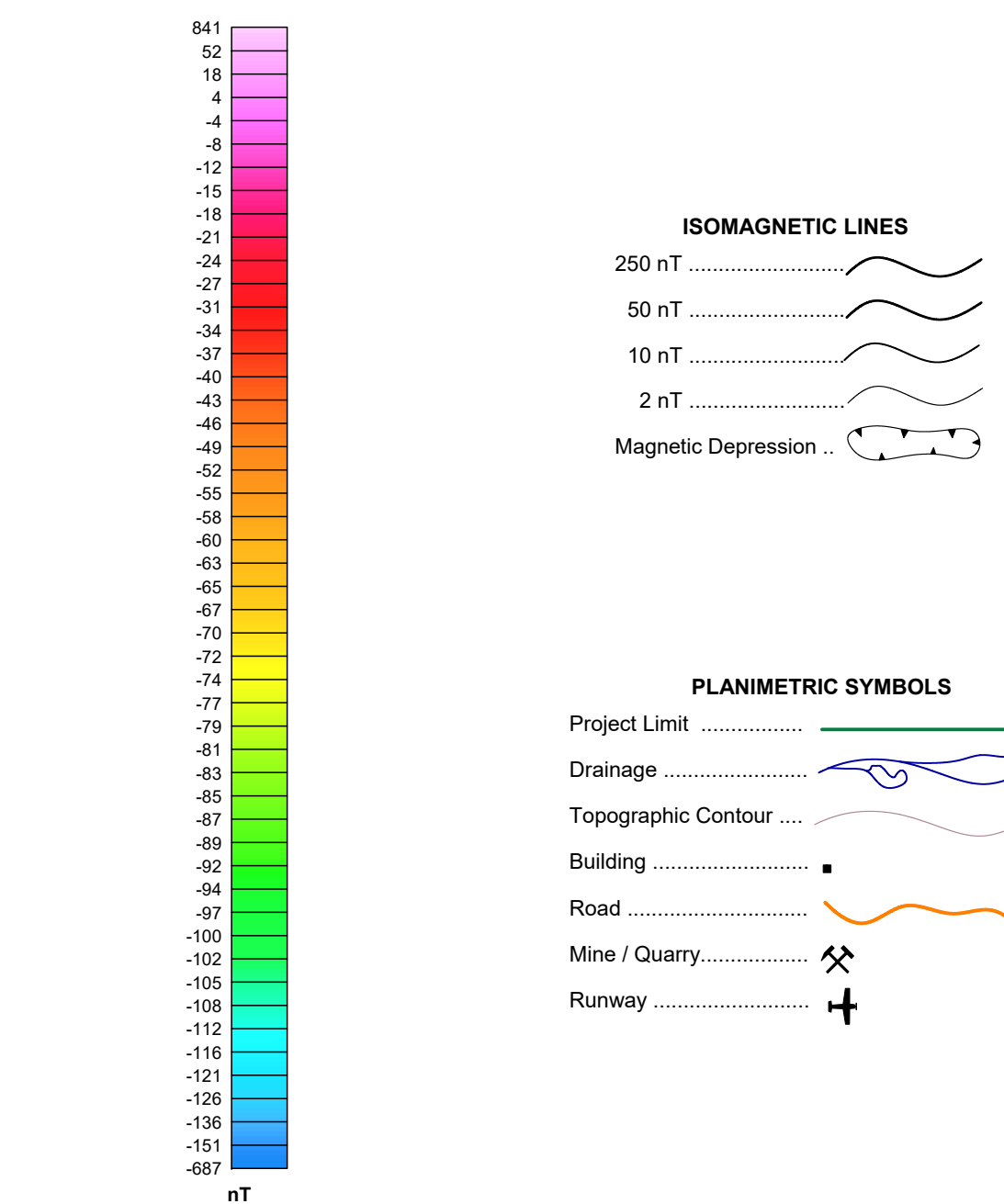
This map of the Residual Total Magnetic Field was derived from data acquired during an aeromagnetic survey carried out by Geo Data Solutions (GDS) Inc. from January 19, 2020 to March 28, 2020. The data were recorded using a split-beam cesium vapour magnetometer (sensitivity = 0.005 nT) mounted in the tail boom of a Spectraflight King Air aircraft (C-440R). The nominal traverse and control line spacings were, respectively, 400 m and 2400 m, and the aircraft flew at a nominal terrain clearance of 150 m. Traverse lines were oriented N75°W, with orthogonal control lines. The flight path was recovered following postflight differential corrections to the raw Global Positioning System (GPS) data and inspection of ground images recorded by a vertically-mounted video camera. The survey was flown on a pre-determined flight surface to minimize differences in magnetic values at the intersections of control and traverse lines. These differences were computer-analysed to obtain a mutually levelled set of flight-line magnetic data. The levelled values were then resampled to a 100 m grid. The International Geomagnetic Reference Field (IGRF) defined at the average GPS altitude of 1630 m for the year 2020.2 was then removed. Removal of the IGRF, representing the magnetic field of the Earth's core, produces a residual component related almost entirely to magnetizations within the Earth's crust.

This publication is available for free download through GEOCAN (http://geocan.mnrc.gc.ca). Corresponding digital profile and gridded data as well as similar data for adjacent airborne geophysical surveys are available from Natural Resources Canada's Geoscientific Data Repository for Aeromagnetic data at http://gdr.mnrc.gc.ca. For more information about this survey, please contact the Geophysical Data Centre, Geological Survey of Canada, 601 Booth Street, Ottawa, Ontario K1A 0E8. Telephone: (613) 995-5326, email: mnrc.inf@geoscan.mnrc.gc.ca.

Copies of this map may also be obtained from the Yukon Geological Survey, Energy, Mines and Resources, Government of Yukon, P.O. Box 2020 (K-102), Whitehorse, Yukon, Y1A 2G6. Telephone: (867) 667-5201, email: geosys@gov.yk.ca, website: http://www.geology.gov.yk.ca.

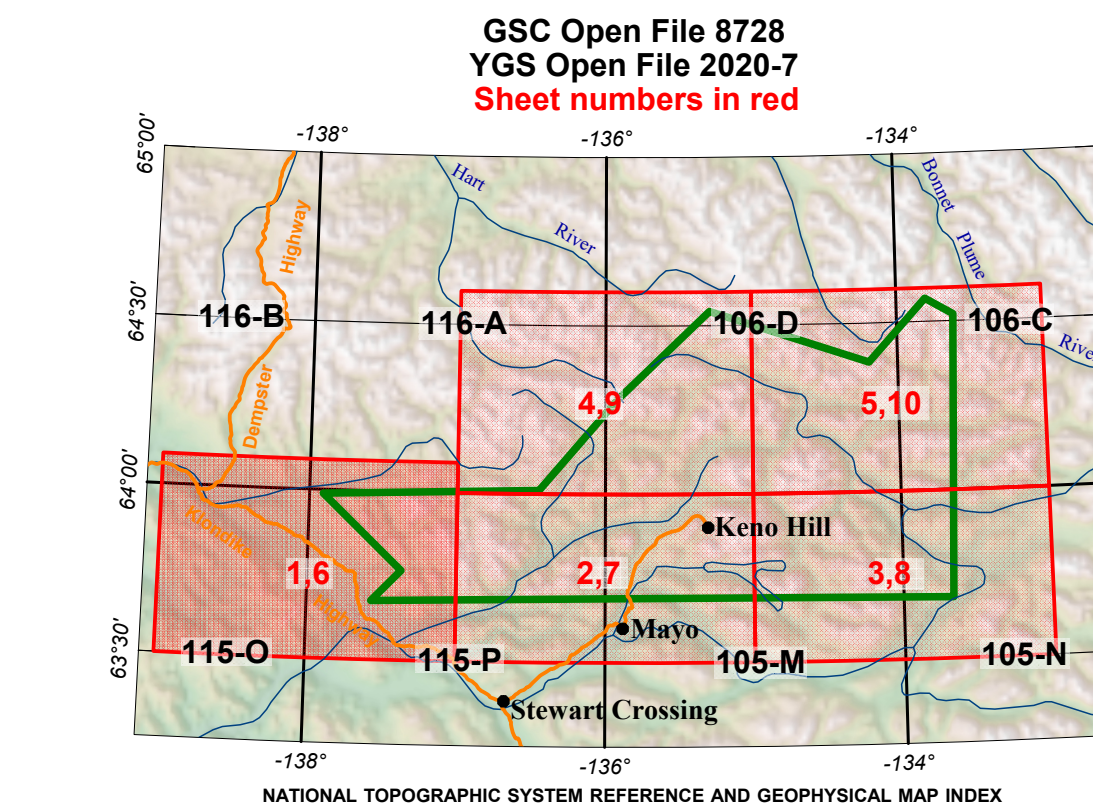
Acknowledgements

The author thanks the field crew chief, Saleh Elmoussaoui (Geo Data Solutions GDS Inc.) for his cooperation and for his able technical assistance for the duration of this survey contract, Douglas Onesschuk (GSC) for his cartographic design expertise and Mark Pilkington (GSC) for his helpful comments and suggestions to improve the maps.



MAP SHEET SUMMARY

- Sheet 1: Residual Total Magnetic Field, parts of NTS 115-P (north half) and 116-A (south half)
- Sheet 2: Residual Total Magnetic Field, parts of NTS 105-M (north half) and 115-P (north half)
- Sheet 3: Residual Total Magnetic Field, parts of NTS 105-M (north half) and 106-D (north half)
- Sheet 4: Residual Total Magnetic Field, parts of NTS 116-A (south half) and 106-D (south half)
- Sheet 5: Residual Total Magnetic Field, parts of NTS 105-C, D
- Sheet 6: First Vertical Derivative of the Magnetic Field, parts of NTS 115-P (north half) and 116-A (south half)
- Sheet 7: First Vertical Derivative of the Magnetic Field, parts of NTS 105-M (north half) and 115-P (north half)
- Sheet 8: First Vertical Derivative of the Magnetic Field, parts of NTS 105-M (north half) and 106-D (south half)
- Sheet 9: First Vertical Derivative of the Magnetic Field, parts of NTS 116-A (south half) and 105-D (south half)
- Sheet 10: First Vertical Derivative of the Magnetic Field, parts of NTS 105-C, D



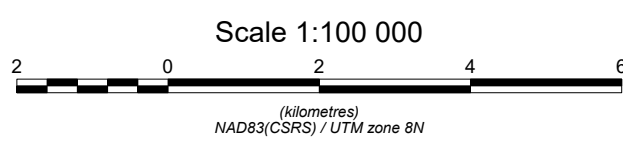
AEROMAGNETIC SURVEY OF THE NASH CREEK AREA  
YUKON

Author: F. Kiss  
Data acquisition and data compilation by  
Geo Data Solutions (GDS) Inc., Laval, Quebec  
Contract and project management by the  
Geological Survey of Canada, Ottawa, Ontario  
Digital cartography by D. Onesschuk, Geological Survey of Canada  
Permanent link: https://doi.org/10.4095/326147

GEOLOGICAL SURVEY OF CANADA OPEN FILE 8728  
YUKON GEOLOGICAL SURVEY OPEN FILE 2020-7

AEROMAGNETIC SURVEY OF THE NASH CREEK AREA  
YUKON  
PARTS OF NTS 105-M, N, 106-C, D, 115-P AND 116-A

RESIDUAL TOTAL MAGNETIC FIELD  
PARTS OF NTS 115-P (NORTH HALF) AND 116-A (SOUTH HALF)



Scale 1:100 000  
Universal Transverse Mercator Projection  
North American Datum 1983  
Base map at the scale of 1:250 000 from Natural Resources Canada, with modifications  
Elevations are in metres above sea level

This aeromagnetic survey and the production of this map were funded  
by phase 2 of the Geo-Mapping for Energy and Minerals program (GEM-2) of the  
Lands and Minerals Sector, Natural Resources Canada.



Recommended citation  
Kiss, F., 2020.  
Aeromagnetic Survey of the Nash Creek Area, Yukon.  
Parts of NTS 105-M, N, 106-C, D, 115-P and 116-A.  
Geological Survey of Canada, Open File 8728.  
Yukon Geological Survey Open File 2020-7.  
Scale 1:100 000. https://doi.org/10.4095/326147