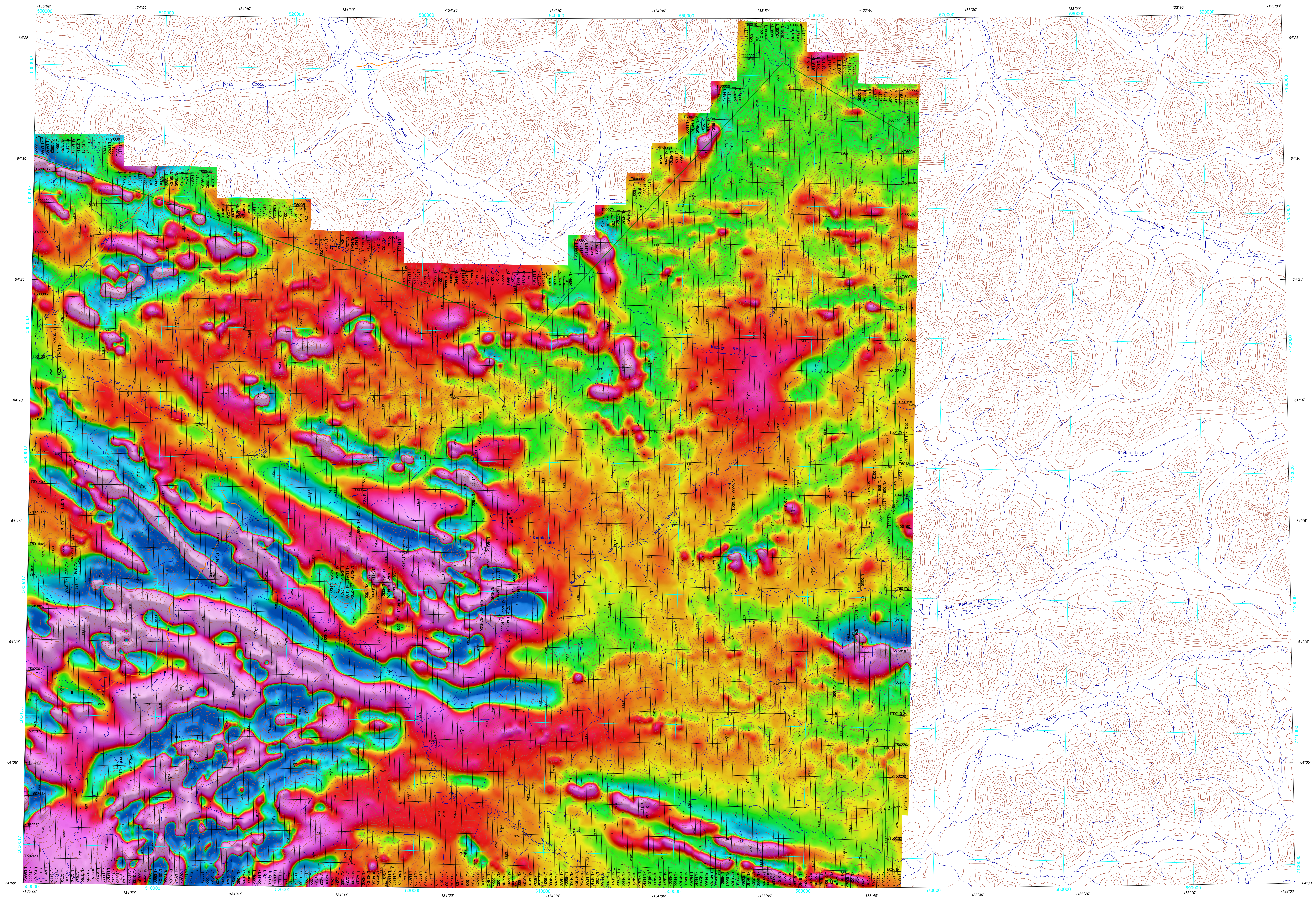


FIRST VERTICAL DERIVATIVE OF THE MAGNETIC FIELD



First Vertical Derivative of the Magnetic Field

This map of the First Vertical Derivative of the Magnetic Field was derived from data acquired during an aeromagnetic survey carried out by Geo Data Solutions (GDS) Inc. from January 19, 2020 to March 28, 2020. The data were recorded using a split-beam dual frequency magnetometer (operating at 1.000 MHz) mounted in the tail cone of a Beechcraft King Air aircraft (C-441R). The nominal traverse and control line spacings were, respectively, 400 m and 2400 m, and the aircraft flew at a nominal terrain clearance of 150 m. Traverse lines were oriented N10°E with orthogonal control lines. The flight path was recovered following post-flight differential corrections to the raw Global Positioning System (GPS) data and inspection of ground images recorded by a vertically-mounted video camera. The survey was flown on a pre-determined flight surface to minimize differences in magnetic values at the intersections of control and traverse lines. These differences were computer-analyzed to obtain a mutually leveled set of high-line magnetic data. The leveled values were then resampled to a 100 m grid. The International Geomagnetic Reference Field (IGRF) defined as the average GRS field of 1625 for the year 2020.2 was then removed. Removal of the IGRF, representing the magnetic field of the Earth's core, produces a residual component related almost entirely to magnetizations within the Earth's crust.

The first vertical derivative of the magnetic field is the rate of change of the magnetic field in the vertical direction. Computation of the first vertical derivative removes long-wavelength features of the magnetic field and significantly improves the resolution of closely spaced and superposed anomalies. A property of first vertical derivative maps is the coincidence of the zero-value contour with vertical contacts at high magnetic latitudes (Hood, 1965).

This publication is available for free download through GEOCAN (<http://geocan.mcgill.ca>). Corresponding digital profile and gridded data as well as similar data for adjacent airborne geophysical surveys are available from Natural Resources Canada's Geoscience Data Repository for Aeromagnetic data at <http://gdr.gsc.nrc.ca>. For more information about this survey, please contact the Geophysical Data Centre, Geological Survey of Canada, 601 Booth Street, Ottawa, Ontario K1A 0E8. Telephone (613) 995-5326, email: mcan.mf@gs-nrc.ca.

Copies of this map may also be obtained from the Yukon Geological Survey, Energy, Mines and Resources, Government of Yukon, P.O. Box 2739, Whitehorse, Yukon, Y1A 2C8. Telephone: (867) 667-3201, email: geology@gyv.ca, website: <http://www.geology.gyv.ca>.

Reference

Hood, P.J., 1965. Gradient measurements in aeromagnetic surveying. Geophysics, v. 30, p. 891-902.

Acknowledgements

The author thanks the field crew chief, Saleh Elmoussouli (Geo Data Solutions GDS Inc.) for his cooperation and for his able technical assistance for the duration of this survey contract, Douglas Oreschuk (GSC) for his cartographic design expertise and Mark Pilkington (GSC) for his helpful comments and suggestions to improve the maps.

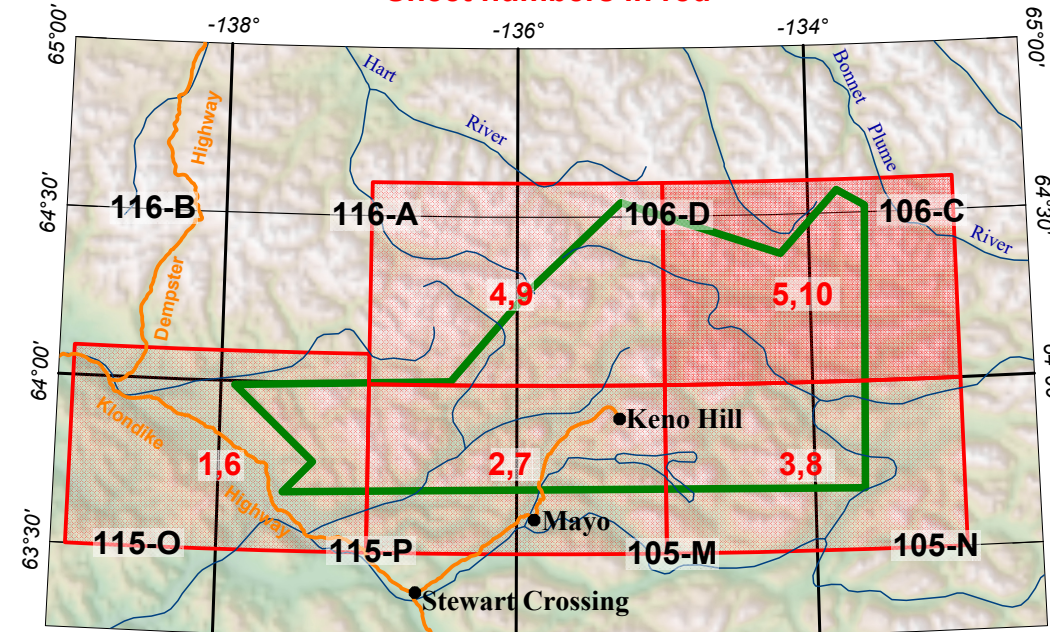
PLANIMETRIC SYMBOLS



MAP SHEET SUMMARY

- Sheet 1: Residual Total Magnetic Field, parts of NTS 115-P (north half) and 116-A (south half)
- Sheet 2: Residual Total Magnetic Field, parts of NTS 105-M (north half) and 115-P (north half)
- Sheet 3: Residual Total Magnetic Field, parts of NTS 105-M, N (north halves)
- Sheet 4: Residual Total Magnetic Field, parts of NTS 116-A (south half) and 106-D
- Sheet 5: Residual Total Magnetic Field, parts of NTS 105-C, D
- Sheet 6: First Vertical Derivative of the Magnetic Field, parts of NTS 115-P (north half) and 116-A (south half)
- Sheet 7: First Vertical Derivative of the Magnetic Field, parts of NTS 105-M (north half) and 115-P (north half)
- Sheet 8: First Vertical Derivative of the Magnetic Field, parts of NTS 105-M, N (north halves)
- Sheet 9: First Vertical Derivative of the Magnetic Field, parts of NTS 116-A (south half) and 106-D
- Sheet 10: First Vertical Derivative of the Magnetic Field, parts of NTS 105-C, D

GSC Open File 8728
YGS Open File 2020-7
Sheet numbers in red



AEROMAGNETIC SURVEY OF THE NASH CREEK AREA
YUKON

GEOLOGICAL SURVEY OF CANADA OPEN FILE 8728
YUKON GEOLOGICAL SURVEY OPEN FILE 2020-7

AEROMAGNETIC SURVEY OF THE NASH CREEK AREA
YUKON
PARTS OF NTS 105-M, N, 106-C, D, 115-P AND 116-A

FIRST VERTICAL DERIVATIVE OF THE MAGNETIC FIELD
PARTS OF NTS 106-C, D

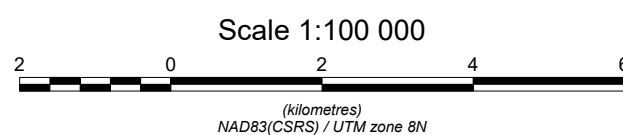
Author: F. Kiss

Data acquisition and data compilation by
Geo Data Solutions (GDS) Inc., Laval, Quebec

Contract and project management by the
Geological Survey of Canada, Ottawa, Ontario

Digital cartography by D. Oreschuk, Geological Survey of Canada

Permanent link: <https://doi.org/10.4095/526147>



Universal Transverse Mercator Projection
North American Datum 1983

© Her Majesty the Queen in Right of Canada, as represented by the Minister of Natural Resources, 2020
Base map at the scale of 1:250 000 from Natural Resources Canada, with modifications
Elevations are in metres above sea level

This aeromagnetic survey and the production of this map were funded
by phase 2 of the Geo-Mapping for Energy and Minerals program (GEM-2) of the
Lands and Minerals Sector, Natural Resources Canada.



MAP LOCATION

Recommended citation
Kiss, F., 2020.

Aeromagnetic Survey of the Nash Creek Area, Yukon,
Parts of NTS 105-M, N, 106-C, D, 115-P and 116-A,
Geological Survey of Canada, Open File 8728,
Yukon Geological Survey Open File 2020-7,
Scale 1:100 000. <https://doi.org/10.4095/526147>

OPEN FILE / DOSSIER PUBLIC
2020-7

YUKON GEOLOGICAL SURVEY
COMMISSION GEOLOGIQUE DU YUKON
2020
Sheet 10 of 10 / Feuille 10 de 10

OPEN FILE
DOSSIER PUBLIC
8728

GEOLOGICAL SURVEY OF CANADA
COMMISSION GEOLOGIQUE
DU YUKON
2020
SHEET 10 OF 10
FEUILLE 10 DE 10