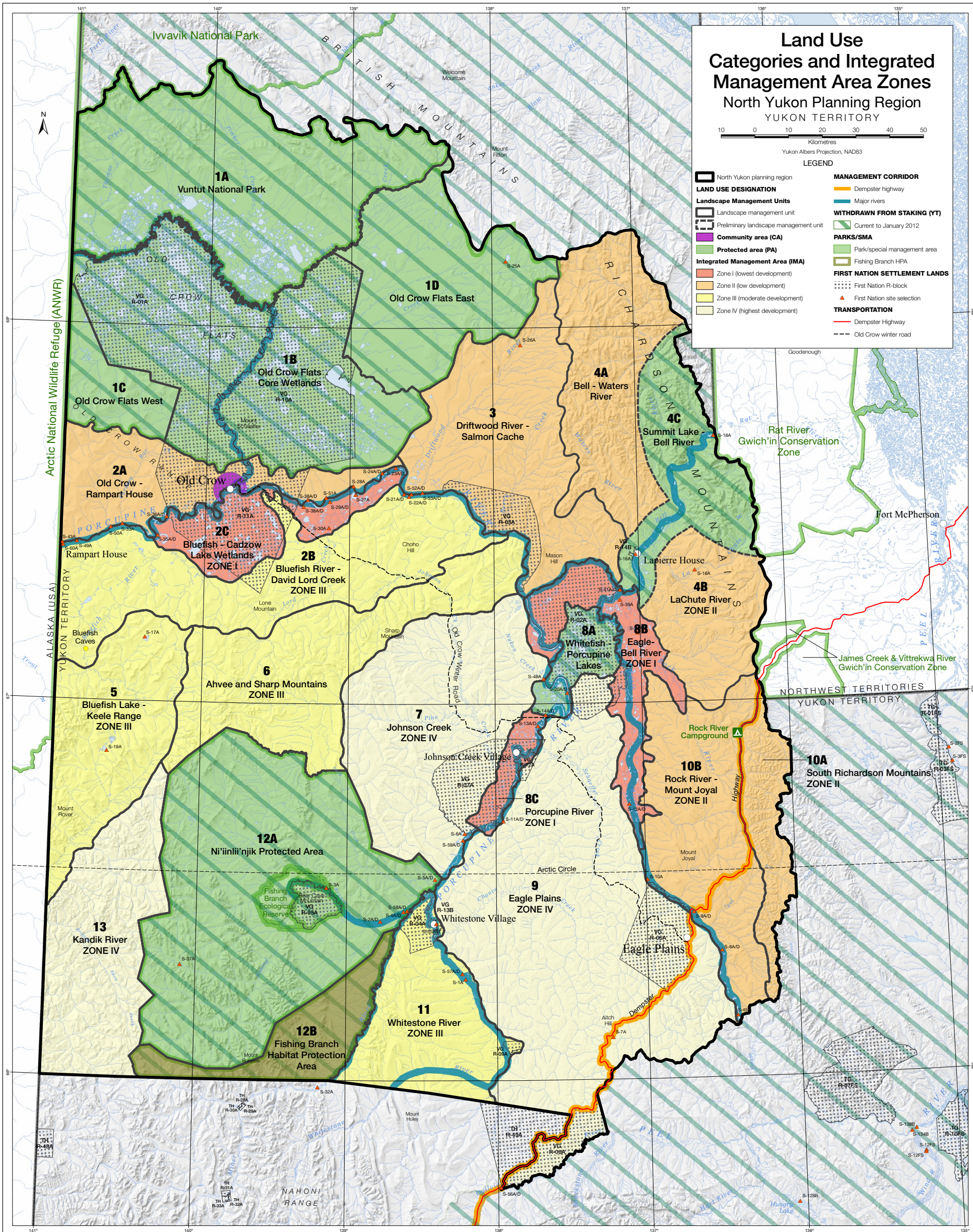


North Yukon Land Use Plan: Map 1 (Amended January 2012)



© Yukon Land Use Planning Council, January 2012

Data sources:

Base data: 1:250,000 National Topographic Database (NRCAN); seasonal roads (EMR), 1:250,000 toponomy, 90m shaded relief (Yukon Environment)

Thematic data: 1:250,000 recommended land use designation, 1:250,000 integrated management area zones, 1:250,000 management corridors, 1:250,000 planning regions (NYPC); First Nations site selections, 1:250,000 provincial boundaries, 1:250,000 & 1M parks/protected areas (Yukon Environment); First Nations settlement lands (Rblocks) obtained from NRCAN 1:30,000 maps and recompiled against 1:250,000 NTDB (Yukon Environment); 1:250,000 Yukon areas withdrawn from staking (Geomatics Yukon); Gwich'in Conservation zones - Northwest Territories (Gwich'in Land Use Planning Board)

Data disclaimer:

This map is a graphical representation, which depicts the approximate size, configuration and spatial relationship of known geographic features. While great care has been taken to ensure the best possible quality, this document is not intended for legal descriptions and/or to calculate precise areas, dimensions or distances. We do not accept any responsibility for errors, omissions or inaccuracies in this data.

Note: The Yukon Land Use Planning Council updated the Commission's original map in order to portray current areas withdrawn from staking.

Digital copies of this map may be obtained from the Yukon Land Use Planning Council website at:

www.planyukon.ca