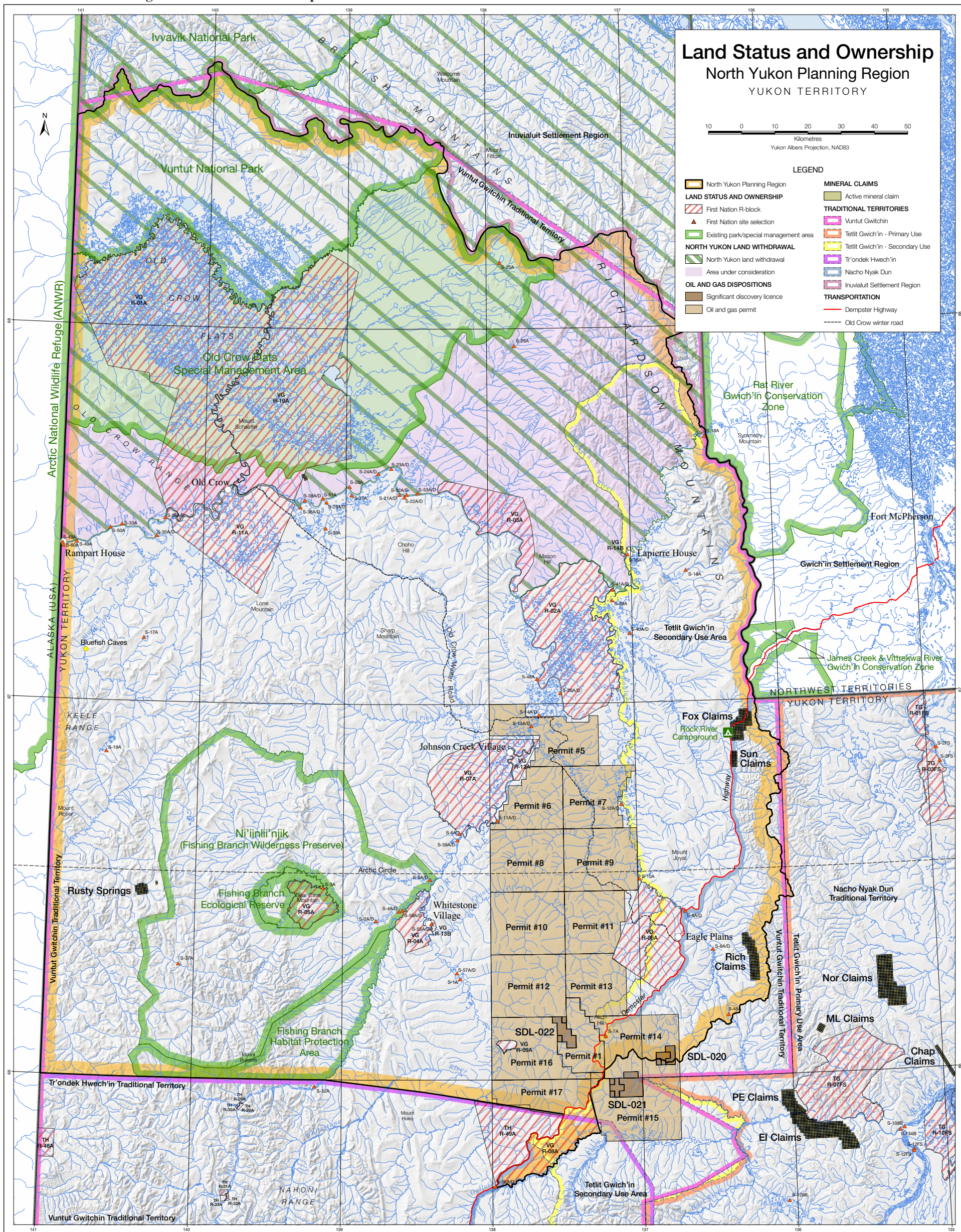


North Yukon Draft Regional Land Use Plan: Map 1



© North Yukon Planning Commission, October 2007

Data sources:

Base data: 1:250,000 National Topographic Database (NRCAN); seasonal roads (EMR), 1:250,000 toponomy, 90m shaded relief (Yukon Environment)

Thematic data: 1:250,000 oil & gas dispositions (Yukon Oil & Gas, EMR); mineral claims (Yukon Minerals Management, EMR); Old Crow Flats SMA (Vuntut Gwitchin Final Agreement); North Yukon land withdrawal (North Slope OIC 2005/53); 1:250,000 provincial boundaries, 1:250,000 & 1M parks/protected areas (Yukon Environment); First Nations settlement lands (R-blocks) obtained from NRCAN 1:30,000 maps and recompiled against 1:250,000 NTDB (Yukon Environment)

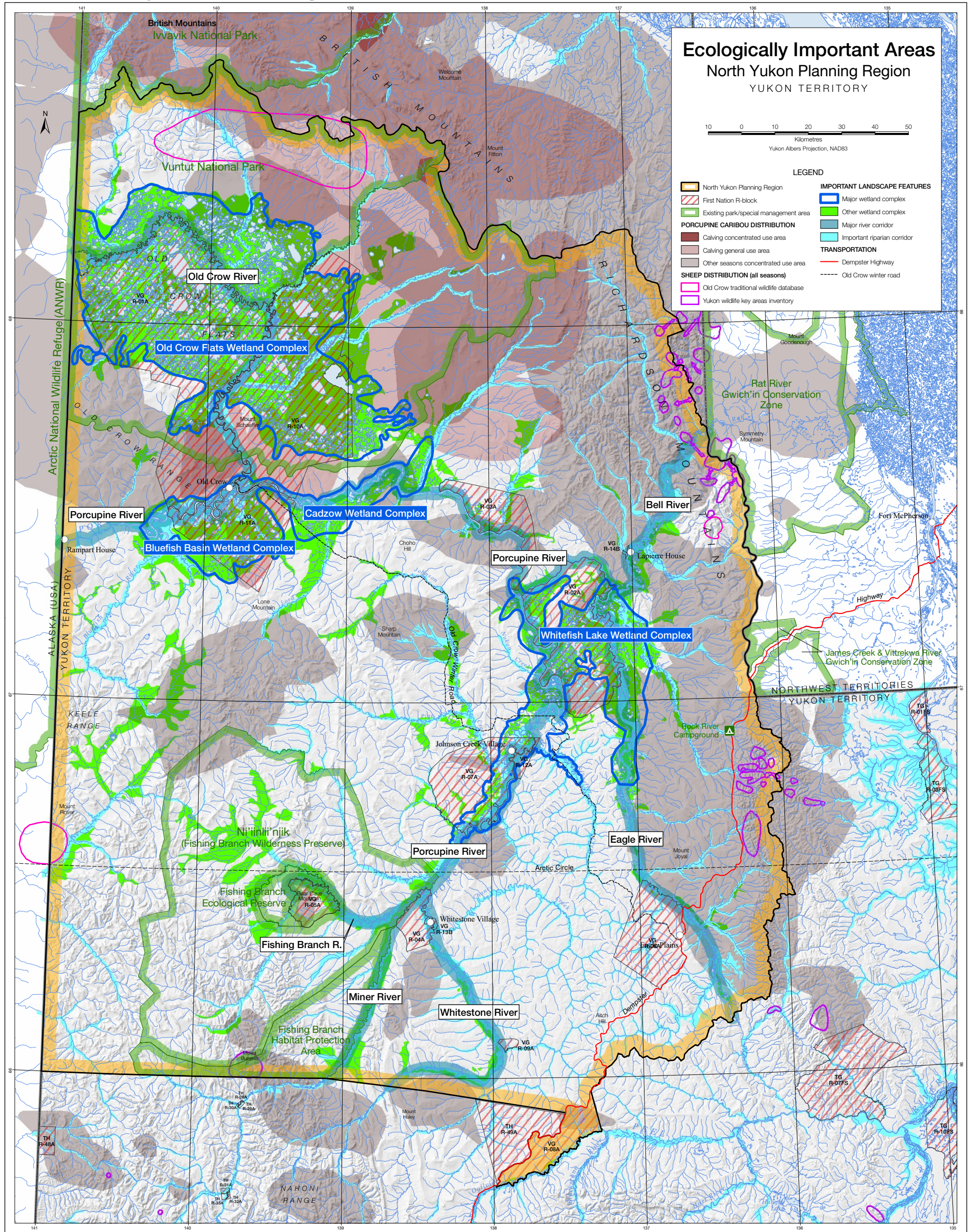
Data disclaimer:

This map is a graphical representation, which depicts the approximate size, configuration and spatial relationship of known geographic features. While great care has been taken to ensure the best possible quality, this document is not intended for legal descriptions and/or to calculate precise areas, dimensions or distances. We do not accept any responsibility for errors, omissions or inaccuracies in this data.

Digital copies of this map may be obtained from the North Yukon Planning Commission website at:

www.nypc.plan yukon.ca

North Yukon Draft Regional Land Use Plan: Map 2



© North Yukon Planning Commission, October 2007

Data sources:

Base data: 1:250,000 National Topographic Database (NRCAN); seasonal roads (Yukon Energy, Mines & Resources), 1:250,000 toponomy, 90m shaded relief (Yukon Environment)

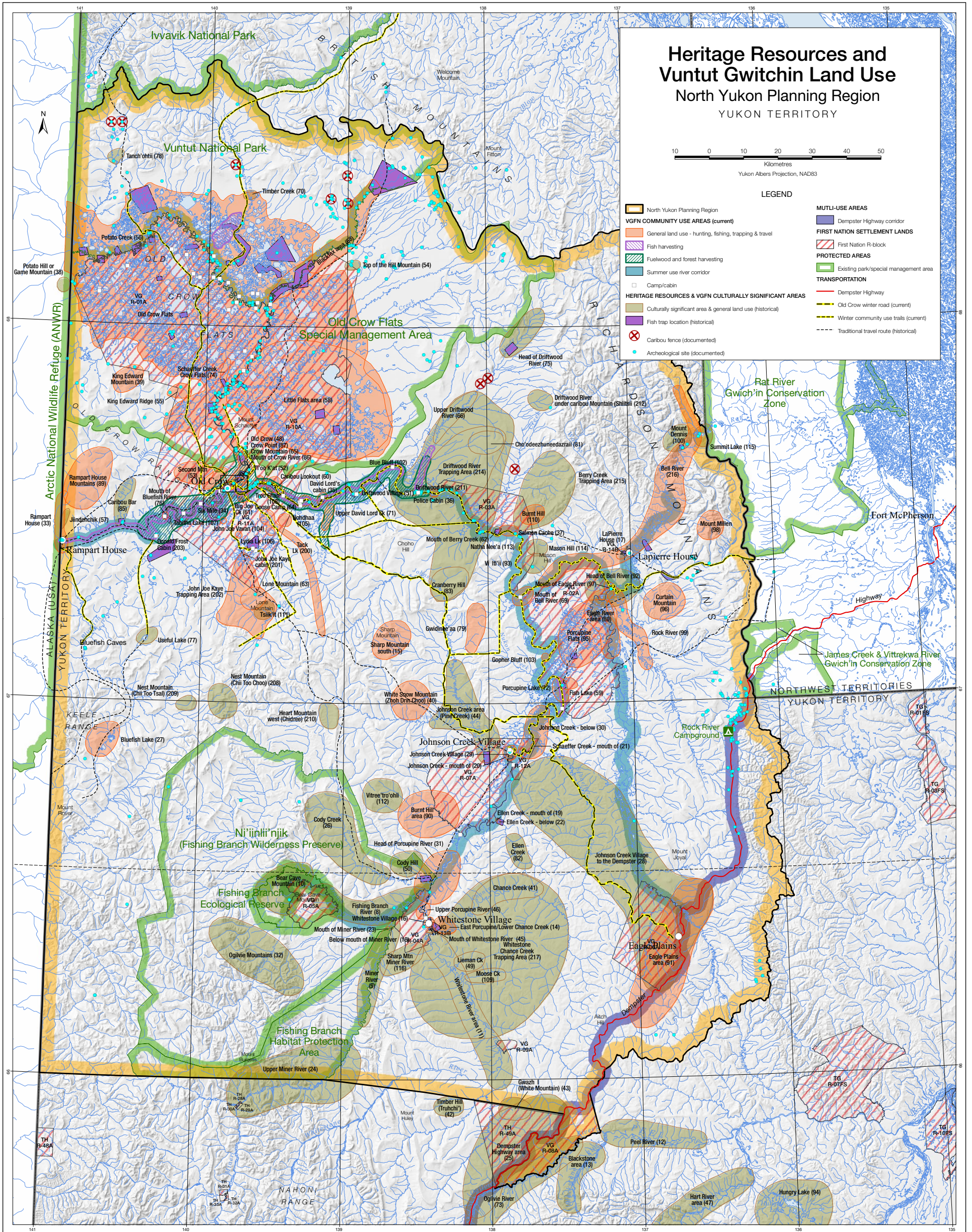
Thematic data: Porcupine Caribou distribution, calving concentrated use area and calving general use area (USGS/BRD analysis, 1983-2001); Porcupine Caribou other seasons concentrated use area (Environment Canada, CWS analysis, 1985-2004); major wetland complexes (Yukon Wetlands Technical Working Group); 2km major rivers buffer, 1:250,000 planning regions (NYPC); 1:250,000 provincial boundaries, parks/protected areas, 1:1,000,000 parks/protected areas (Yukon Environment), First Nations settlement lands (R-blocks) obtained from NRCAN 1:30,000 maps and recompiled against 1:250,000 NTDB (Yukon Environment)

Data disclaimer:

This map is a graphical representation, which depicts the approximate size, configuration and spatial relationship of known geographic features. While great care has been taken to ensure the best possible quality, this document is not intended for legal descriptions and/or to calculate precise areas, dimensions or distances. We do not accept any responsibility for errors, omissions or inaccuracies in this data.

Digital copies of this map may be obtained from the North Yukon Planning Commission website at:

www.nypc.planyukon.ca



© North Yukon Planning Commission, October 2007

Data sources:

Base data: 1:250,000 National Topographic Database (NRCAN); seasonal roads (EMR), 1:250,000 toponomy, 90m shaded relief (Yukon Environment)

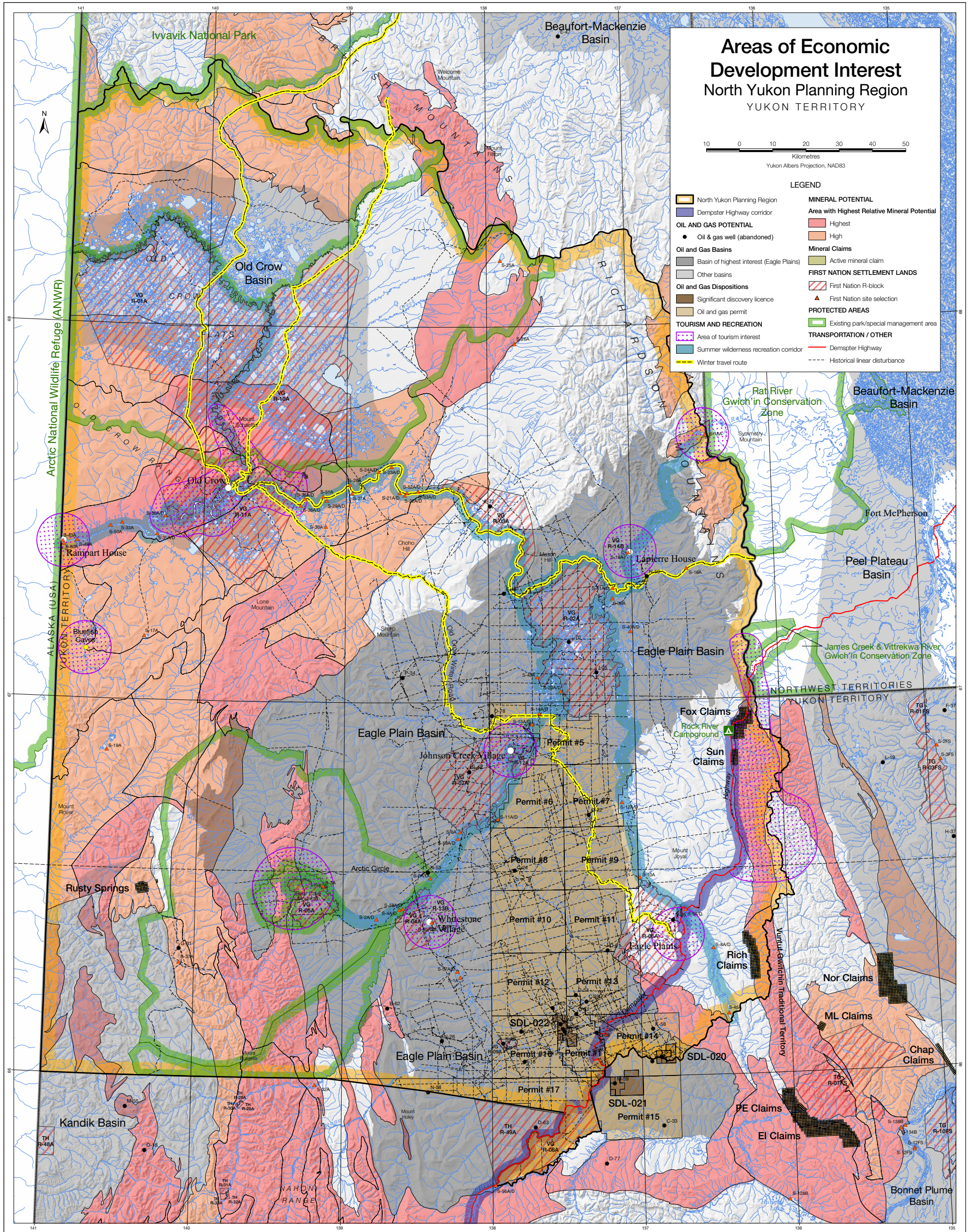
Thematic data: 1:250,000 archeological sites (YTG archeological sites database); VGFN land use, fish harvesting, fuelwood & forest harvesting, camps/cabins, historical fish trap locations, traditional travel routes, caribou fences (VGFN); 1:50,000 Old Crow winter road & community-use trails obtained from NRCAN and updated by Geomatics Yukon, NYPC and Yukon Oil & Gas, EMR; landscape management units, 1:250,000 planning regions (NYPC); 1:250,000 provincial boundaries, 1:250,000 & 1M parks/protected areas (Yukon Environment); First Nations settlement lands (R-blocks) obtained from NRCAN 1:30,000 maps and recompiled against 1:250,000 NTDB (Yukon Environment)

Data disclaimer:

This map is a graphical representation, which depicts the approximate size, configuration and spatial relationship of known geographic features. While great care has been taken to ensure the best possible quality, this document is not intended for legal descriptions and/or to calculate precise areas, dimensions or distances. We do not accept any responsibility for errors, omissions or inaccuracies in this data. Please note that Inuvialuit, Tetlit Gwich'in, Nacho Nyak Dun and Tr'ondek heritage and land use information has not been included in this map, but has been fully considered in the draft regional land use plan.

Digital copies of this map may be obtained from the North Yukon Planning Commission website at:

www.nypc.plan yukon.ca



© North Yukon Planning Commission, October 2007

Data sources:

Base data: 1:250,000 National Topographic Database, 1:50,000 historical linear disturbance (NRCAN); seasonal roads (Yukon Energy, Mines & Resources), 1:250,000 toponomy, 90m shaded relief (Yukon Environment)

Thematic data: proposed landscape management units, 1:250,000 planning regions (NYPC); oil and gas potential, oil and gas dispositions, oil and gas wells (Yukon Energy, Mines & Resources); mineral potential, mineral claims (Yukon Geological Survey); area of tourism interest, summer wilderness recreation corridor, Dempster highway tourism corridor, winter travel route, 1:250,000 First Nations site selections, provincial boundaries, parks/special management area, 1:1,000,000 parks/protected areas (Yukon Environment), First Nations settlement lands (R-blocks) obtained from NRCAN 1:30,000 maps and recompiled against 1:250,000 NTDB (Yukon Environment)

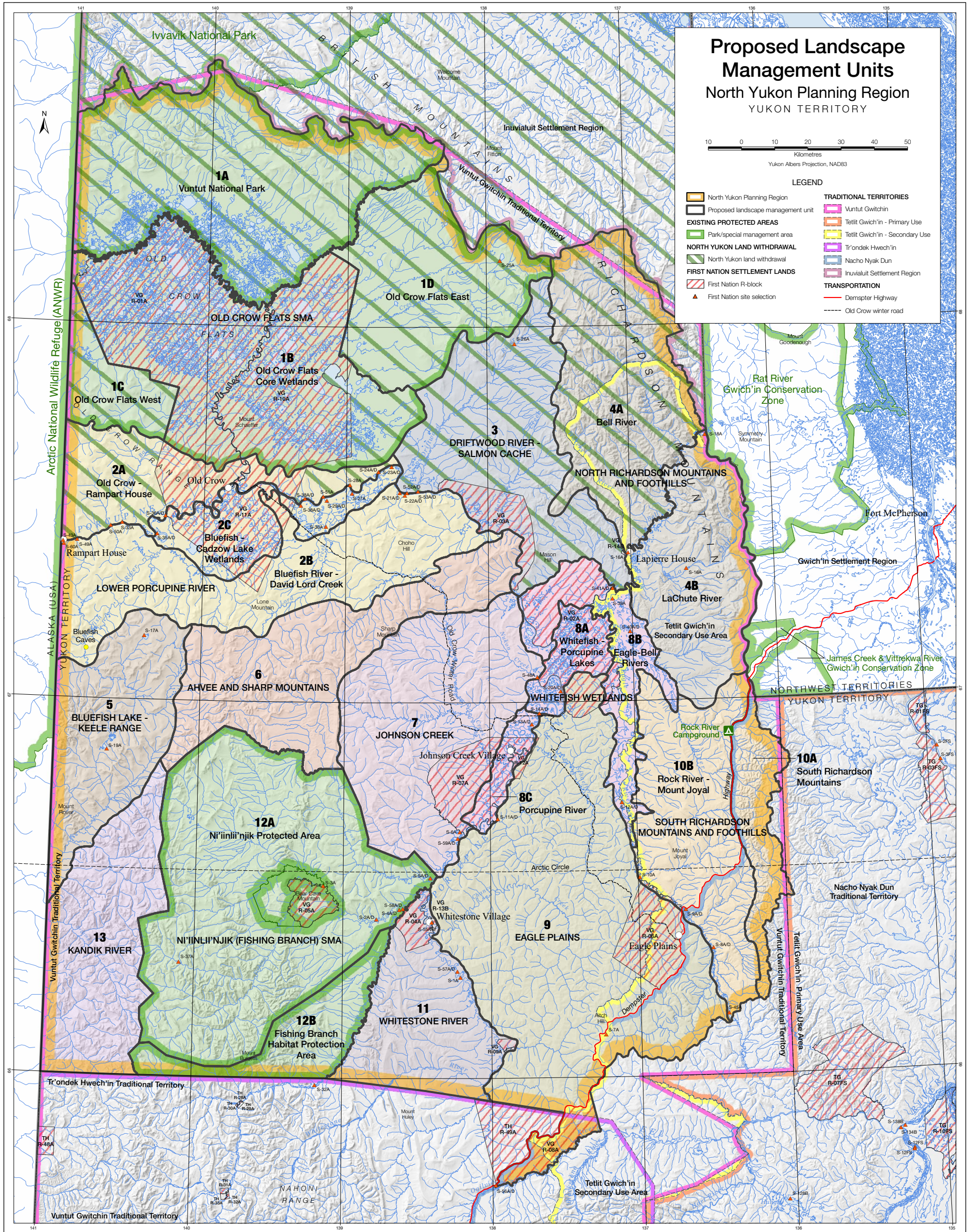
Data disclaimer:

This map is a graphical representation, which depicts the approximate size, configuration and spatial relationship of known geographic features. While great care has been taken to ensure the best possible quality, this document is not intended for legal descriptions and/or to calculate precise areas, dimensions or distances. We do not accept any responsibility for errors, omissions or inaccuracies in this data.

Digital copies of this map may be obtained from the North Yukon Planning Commission website at:

www.nypc.plan yukon.ca

North Yukon Draft Regional Land Use Plan: Map 5



© North Yukon Planning Commission, October 2007

Data sources:

Base data: 1:250,000 National Topographic Database (NRCAN); seasonal roads (EMR), 1:250,000 toponomy, 90m shaded relief (Yukon Environment)

Thematic data: Proposed landscape management units, 1:250,000 planning regions (NYPC); 1:250,000 First Nations traditional territories, 1:250,000 First Nations site selections, 1:250,000 provincial boundaries, 1:250,000 & 1M parks/protected areas (Yukon Environment); First Nations settlement lands (R-blocks) obtained from NRCAN 1:30,000 maps and recompiled against 1:250,000 NTDB (Yukon Environment)

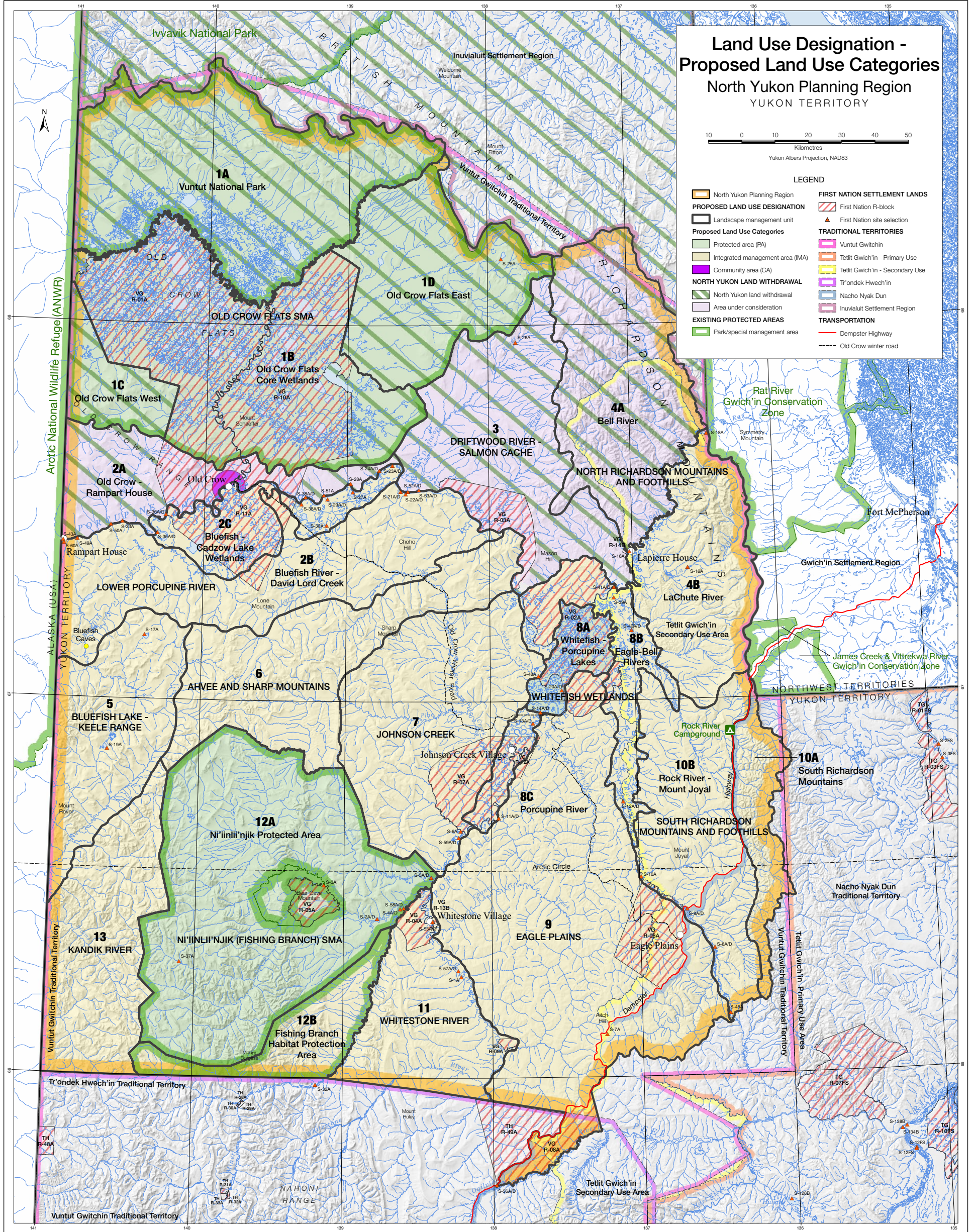
Data disclaimer:

This map is a graphical representation, which depicts the approximate size, configuration and spatial relationship of known geographic features. While great care has been taken to ensure the best possible quality, this document is not intended for legal descriptions and/or to calculate precise areas, dimensions or distances. We do not accept any responsibility for errors, omissions or inaccuracies in this data.

Digital copies of this map may be obtained from the North Yukon Planning Commission website at:

www.nypc.plan yukon.ca

North Yukon Draft Regional Land Use Plan: Map 6



© North Yukon Planning Commission, October 2007

Data sources:

Base data: 1:250,000 National Topographic Database (NRCAN); seasonal roads (EMR), 1:250,000 toponomy, 90m shaded relief (Yukon Environment)

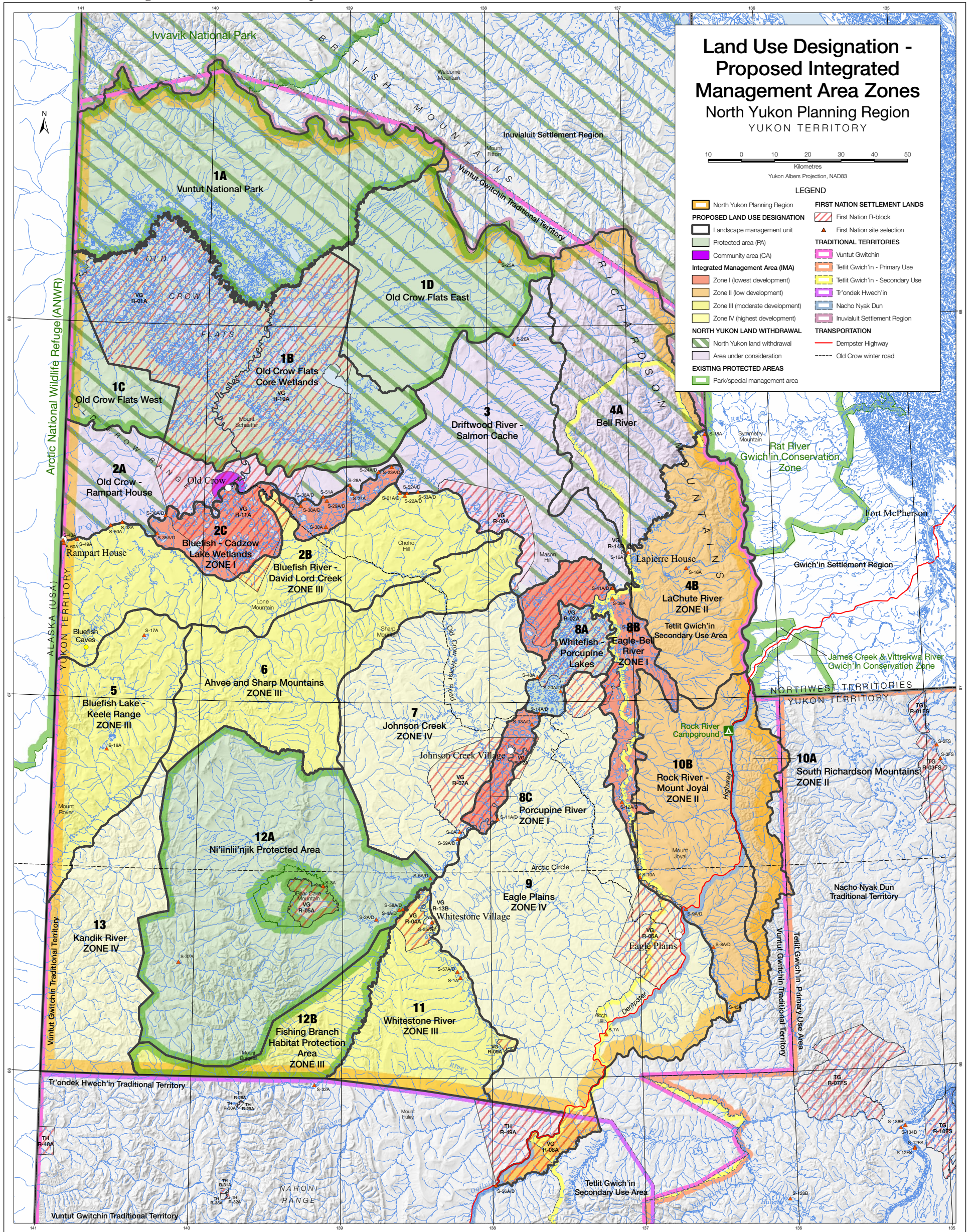
Thematic data: Proposed landscape management units, land use zones, 1:250,000 planning regions (NYPC); 1:250,000 First Nations traditional territories, 1:250,000 First Nations site selections, 1:250,000 provincial boundaries, 1:250,000 & 1M parks/protected areas (Yukon Environment); First Nations settlement lands (R-blocks) obtained from NRCAN 1:30,000 maps and recompiled against 1:250,000 NTDB (Yukon Environment)

Data disclaimer:

This map is a graphical representation, which depicts the approximate size, configuration and spatial relationship of known geographic features. While great care has been taken to ensure the best possible quality, this document is not intended for legal descriptions and/or to calculate precise areas, dimensions or distances. We do not accept any responsibility for errors, omissions or inaccuracies in this data.

Digital copies of this map may be obtained from the North Yukon Planning Commission website at:

www.nypc.plan yukon.ca



© North Yukon Planning Commission, October 2007

Data sources:

Base data: 1:250,000 National Topographic Database (NRCAN); seasonal roads (EMR), 1:250,000 toponomy, 90m shaded relief (Yukon Environment)

Thematic data: Proposed landscape management units, land use zones, 1:250,000 planning regions (NYPC); 1:250,000 First Nations traditional territories, 1:250,000 First Nations site selections, 1:250,000 provincial boundaries, 1:250,000 & 1M parks/protected areas (Yukon Environment); First Nations settlement lands (R-blocks) obtained from NRCAN 1:30,000 maps and recompiled against 1:250,000 NTDB (Yukon Environment)

Data disclaimer:

This map is a graphical representation, which depicts the approximate size, configuration and spatial relationship of known geographic features. While great care has been taken to ensure the best possible quality, this document is not intended for legal descriptions and/or to calculate precise areas, dimensions or distances. We do not accept any responsibility for errors, omissions or inaccuracies in this data.

Digital copies of this map may be obtained from the North Yukon Planning Commission website at:

www.nypc.plan yukon.ca