

WILDLIFE BRANCH

OUR FILE 3997-1-11

YOUR FILE

80 02 18

MOOSE SURVEY - G.M.Z. 7 - MARCH, 1979

Survey data:

Date - March 3, 1979

Area - Kusawa, Frederick, Jo-Jo Lakes

Period - 14:00 to 17:00 hours

Weather - -15°C, calm, high overcast, light snow

Aircraft - Gazelle helicopter - W. Eng

Observer - D. Larsen

Observations: the following numbers correspond to observations on the attached map.

1. 1♀ - 4,500 ft elevation
2. 3♀♀ - 4,500 ft elevation
3. 1♀ - 4,600'
4. 1♀, 1yr1 ♂ - 3,700'
5. 1♂ - 4,300'
6. 1♂ - 4,300'
7. 2♀♀, 2yoy - 4,200'
8. 3♂♂, 1♀ - 3,500'
9. 2♀♀ - 4,000'
10. 1♀, 1yoy, 1♂ - 4,000'
11. 3♀♀, 1yoy - 2,700'
12. 2♂♂ - 3,700'
13. 1♀, 1yr1 ♂ - 4,300'
14. 1♂ - 3,400'
15. 2♀♀, 1yoy - 3,400'
16. 3♀♀, 2yoy - 4,000'
17. 2♀♀ - 3,800'
18. 2♂♂ - 4,000'
19. 2♀♀, 1yr1 ♂ - 4,300'

Moose Survey
March 3, 1979
Page 2

20. 2♂♂, 1♀ - 3,800'
21. 1♀, 1yr1 ♂ - 3,400'
22. 1♂ - 3,900'
23. 1♀ - 2,900'
1♂ - 3,100'
1♂ - 3,400'
1♂, 1♀ - 3,500'
24. 8♀♀, 5♂♂
25. 2♀♀ - 3,500'
26. 1 unident. - 3,800'
27. 5♀♀, 2yoy, 1yr1 ♀ - 4,000'
28. 1♂ - 3,400'
29. 1♀, 1♀ with twins - 4,000'
30. 1♀, 2 unident. - 3,500'
31. 3♀♀ - 2,800'
32. 1♀ - 4,600'
33. 1♀ - 3,600'
34. 1 unident.
35. 1 unident.

TOTALS: 52♀♀, 1lyoy, 23♂♂, 4yr1 ♂♂, 1yr1 ♀, 5 unident.

Remarks: This survey was designed to census the valley habitats around Kusawa and Frederick Lakes. Extensive willow - birch communities were found along, and in valleys at either end of Frederick Lake as well as at the south end of Jo-Jo Lake. These were also the areas where moose were commonly observed. Habitat was limited along the southern half of Kusawa Lake.

The adult sex ratio of 23♂♂:52♀♀ (44:100) is low but still acceptable. A late winter calf ratio of 11 calves:52♀♀ (21:100) or 11 calves:91 identifiable animals (12%) is indicative of high mortality in the calf cohort during the first ten months. A yearling

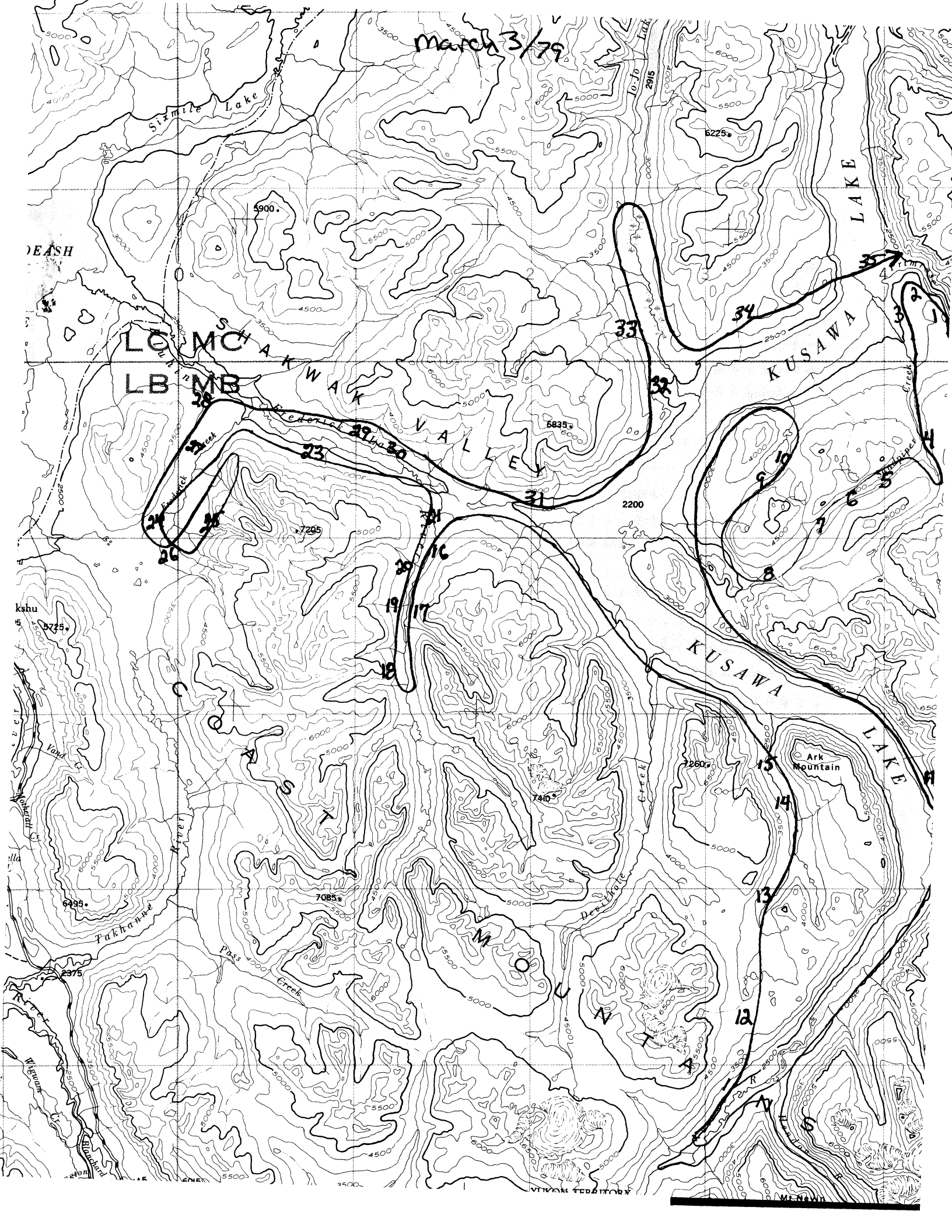
Moose Survey
March 3, 1979
Page 3

count of 5.5% also reflects a poor survival rate and thus poor recruitment in this population in 1979.

The majority of the animals (78%) were observed between the 3,400 to 4,400 foot level. Treeline occurs roughly between 3,000 to 4,000 feet. The large percentage of animals observed between the above elevations could be a function of habitat selection or observation bias.

D.L.

March 3/79



DEASH

LO MC
LB MB

W A K
V A L E Y

KUSAWA
LAKE

KUSAWA
LAKE

Ark
Mountain

kshu

Takla
Pass

T A
M O U N T A I N

ARK
MOUNTAIN

VIKON TERRITORY

MENAW