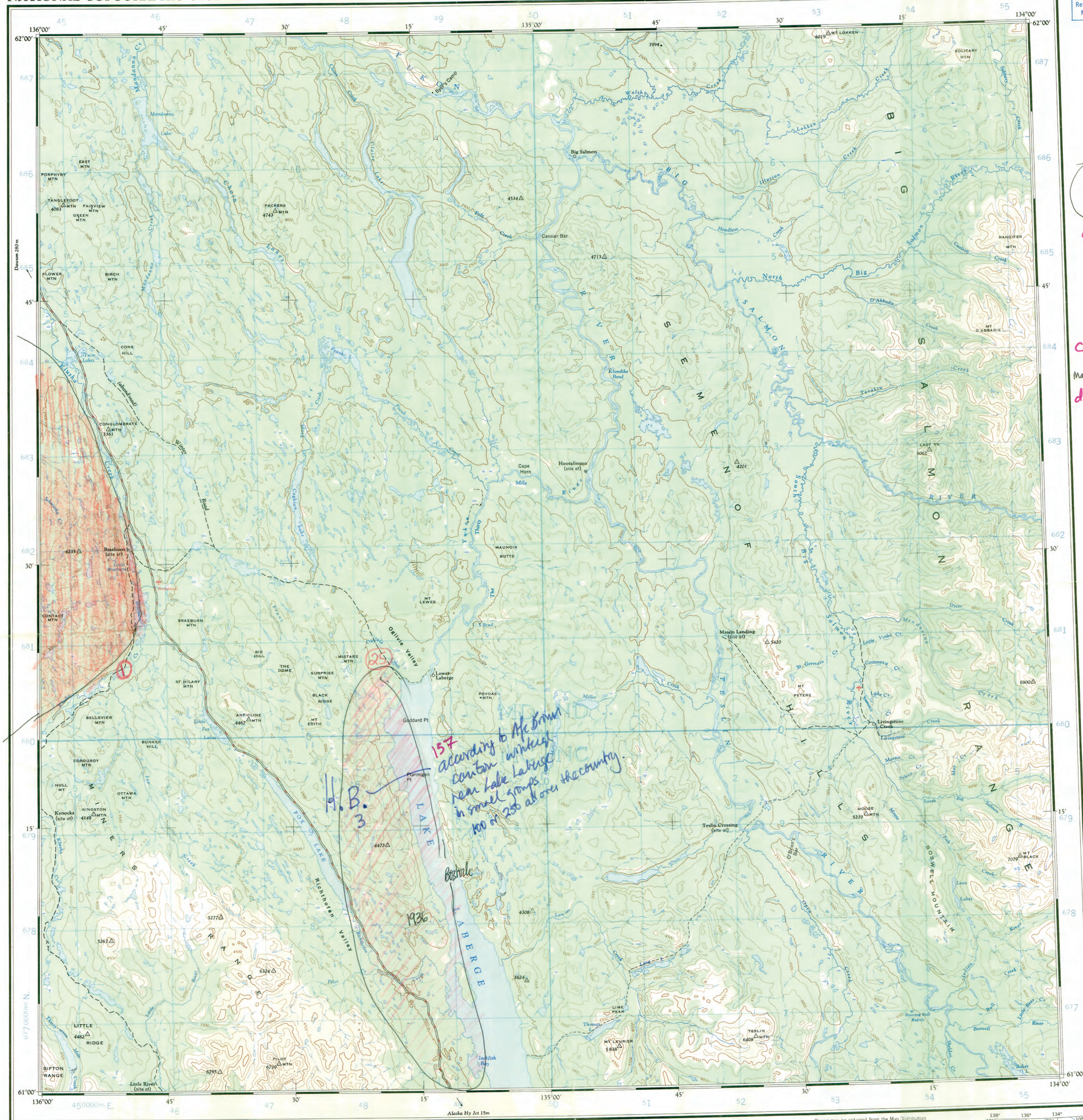


Refer to this Map as: 105 E EDITION 2 ASE SERIES A502



HB3
157a
b
during the winter of 80, large numbers of Lake Laberge had appeared on the west shore of Lake Laberge and this was the first time for many years. (Bestock 1979: 80)
according to Mc Brown can'ton withal near lake Laberge in small groups 100 or 200 all over the country.

c
d
McClellan 81: 496 "The Flat Plain People" of Lake Laberge lived mainly on whitefish and mountain can'ton
Many like
ML1 "can'ton even use to go to Braeburn" springtime got food there too.

157 according to Mc Brown can'ton withal near lake Laberge in small groups 100 or 200 all over the country.

100,000 M SQUARE IDENTIFICATION

GRID ZONE DESIGNATION	MD	ND	680
8V	MC	NC	50

TO GIVE A REFERENCE TO NEAREST 1000 METRES

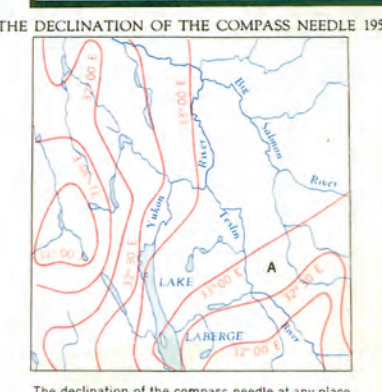
EXAMPLE: BUILDING

SQUARE	Read letters of 100,000 m. square	MD
EASTING	Read number on grid line immediately to left of point	9
ESTIMATE	Estimate tenths of a square from this line eastward to point	4
NORTHING	Read number on grid line immediately below point	2
ESTIMATE	Estimate tenths of a square from this line northward to point	4

MILITARY GRID REFERENCE MD9424 (to nearest 1,000 metres)

If reporting beyond 10° in any direction, prefix Grid Zone Designation as: 8VMD9424

TEN THOUSAND METRE UNIVERSAL TRANSVERSE MERCATOR GRID ZONE 8



Produced and printed by the SURVEYS AND MAPPING BRANCH, DEPARTMENT OF MINES AND TECHNICAL SURVEYS, 1958, from air photographs taken in 1949 and 1952.

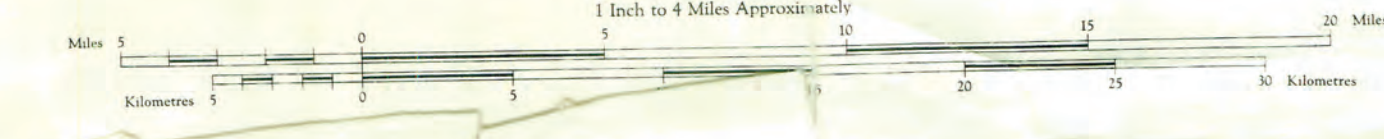
REFERENCE

Roads:	2 lanes or more
loop surface, all weather	
wash or cart track	
Trail or portage	
Village or settlement	
Post office	
Building or cabin	
R.C.M.P. post	
Horizontal control point	
Astronomical position	
Spot elevation (in feet)	2909

Universal Transverse Mercator Projection

LABERGE YUKON TERRITORY

Scale 1:250,000 1 Inch to 4 Miles Approx. ratio



Contours may be obtained from the Map Distribution Office, Department of Mines and Technical Surveys, Ottawa.

REFERENCE

Streams:	intermittent or dry
Sand, gravel or mud	
Marsh or swamp	
Contours	
Elevation	
Depression	
Spot elevation	
Exner	
Forest	
Landing ground	



LABERGE 105 E EDITION 2 ASE