

# Swan Haven Interpretation Centre

Centre d'interprétation du Havre des cygnes  
Degey Nanèdel



History and facility description

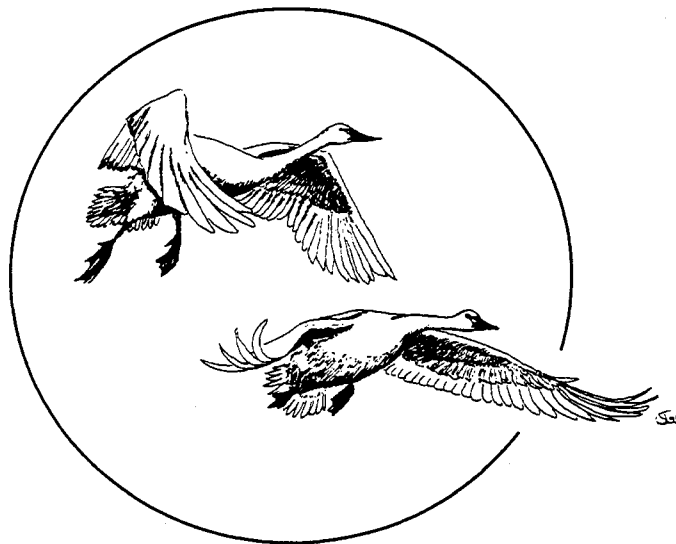
August 1996



# Acknowledgements

Swan Haven is the product of many visionary people representing several organisations. Girl Guides of Canada, Ducks Unlimited Canada and the Yukon Government, in particular, the departments of Renewable Resources and Economic Development were the key organisations that made this centre a reality.

Swan Haven would not be a success if not for the support of our many volunteers and contributors. A heartfelt thank you to everyone who participated in the life and activities of the centre. The dedication and contribution of non-profit and community organisations as well as businesses make it possible to continue to offer quality outdoor learning and appreciation opportunities. They also make it possible to continue to improve the services offered to the community.



# Table of Contents

Acknowledgements .....	2
Table of Contents .....	3
Key Points .....	4
Introduction	
Background .....	6
Objectives of report .....	7
Scope .....	7
Partners and collaborators	
Background .....	8
Timelines .....	9
Discussion .....	13
Facility description	
Design .....	14
Construction .....	14
Interpretive displays .....	15
Funding and costs .....	16
Activities at the Centre .....	17
Recommendations .....	18
Appendix:	
1. Agreement .....	19
2. Site Plan .....	29
3. Building Plan .....	30
4. Capital Expenditures .....	31
5. Strategic Plan .....	32

# Key Points

1. More than 10% of North America's waterfowl migrate through M'Clintock Bay each spring. This is a critical resting site because it offers a place to rest, shelter from predators and provides food.
2. Negotiations with the Girl Guides of Canada began in 1992. This tripartite agreement allows construction of a public facility on private land.
3. The focus of the activities centre would be to protect the natural values of the environment and enhance the public's understanding of wildlife.
4. Area residents supported this development. Swan viewing activities at the facility take priority from March 15 to May 31, each year. The Girl Guides retain priority of use of the facility during the remainder of the year.
5. The facility is a two-storey building. It was constructed at a cost of \$103,930.00 for the building, land improvements and interpretive displays. Funding came from: Ducks Unlimited Canada; Demonstration Projects Fund administered by Renewable Resources; Community Development Fund administered by Economic Development; Wildlife Viewing Program of Renewable Resources; Winter Employment Creation Fund of 1993/94; and, a fund for French language services administered by Queen's Printer.
6. Collaborating groups in the program delivery include: City of Whitehorse, Parks and Recreation Department; Yukon Conservation Society; Whitehorse Chamber of Commerce; Canadian Parks and Wilderness Society; Canadian Wildlife Service; Yukon Fish and Game Association; Yukon Bird Club; and, Recreation and Parks Association of Yukon.



7. After three seasons, we face some crucial decisions regarding the future of the facility. These include: a) Should we invest to bring electricity to the building?; b) Should new interpretive displays be developed, if so, what information should they cover?; c) Should cost-recovery of program delivery be considered?; d) Can other wildlife viewing opportunities be developed in the tourism shoulder season that would complement this venue?
  
8. Another consideration would include the involvement of local First Nations more directly in the programs offered and the development of new activities.

# Introduction

The information in this report focuses first on the evolution of the various partnerships. In particular the founding of the original team that provided the momentum and consensus to work towards a formal agreement. A discussion of the development of further partnerships to offer interpretive programs follows. The second part of this report describes the events that unfolded to construct the facility on the site. Information on the construction design and costs is detailed in this section.

## Background

M'Clintock Bay is a critical habitat for migrating waterfowl in the spring. Local First Nations used this staging area for spring waterfowl hunting for many generations. Today, it has become part of many residents' springtime activities.

Three features make this place critical to the migrating swans, ducks and geese. First, the warm water from Marsh Lake flows into the bay and keeps it ice-free throughout most of the winter. Then, the waters of M'Clintock River are laden with silt. This river flows into M'Clintock bay where it deposits a vast delta of silt. Last, the spring water levels are low enough to allow easy access to the lush vegetation that grows upon the nutrient-rich silt deposited by the M'Clintock River.

At the peak of migration in late April, thousands of swans, ducks and geese can be seen in the bay. It is crucial that the birds find a place to rest and feed along their migration route. They cannot complete their journey without stopping to refuel along the way. To refuel, waterfowl must have access to foods such as aquatic vegetation and freshwater invertebrates. Because of the quality of the wildlife viewing opportunity offered by this site, hundreds of people came to see the birds each spring. This intense use by

people had the potential to degrade the habitat and reduce the quality of the site. Wildlife professionals feared that with time, the impact of human activity could begin to negatively impact the waterfowl's use of the bay.

A report detailing draft management options for the M'Clintock Bay waterfowl staging area was published in 1988. It details the significance of the area and proposes three management needs for the bay. These are: establishing protection for the bay; developing an interpretation program to manage and enhance public use, and; establishing ongoing population and habitat research to monitor the effectiveness of the management options. Management of people's use and activity was a primary concern for this area. The two areas of primary concern were shoreline activities and open water boating during waterfowl staging.

### Objectives

This report seeks to:

1. Describe the events that led to the creation of Swan Haven Interpretation Centre at M'Clintock Bay;
2. Describe the roles of partners and collaborators in program delivery;
3. Describe the design and construction of the facility;
4. Make recommendations to improve the facility's interpretive programs based on a preliminary evaluation.

### Scope

The information for this report was gathered from file records of Renewable Resources, the Wildlife Viewing Program and Ducks Unlimited as well as from personal notes from the personnel involved. The information collected spans the two years required to complete the project starting from the negotiation of the agreement to the official opening and continuing through two years of the centre's operation. The recommendations offered are based on communications between the partners and users of the facility.

# Partners and collaborators

## Background

The Wildlife Viewing Program of the Department of Renewable Resources revived existing plans for development of a viewing facility in 1992. The new plans called for the construction of a viewing platform at the end of the access road that overlooks the bay. Purchasing a lot was too expensive and there were no available land parcels.

A letter, sent to the residents of the North M'Clintock Bay subdivision, advised them of the intended developments and requested their input into the process. Neighbours did not appear to have concerns regarding the proposed developments. Some of the residents welcomed the idea and hoped that it would contribute to control people's movements while birdwatching at the site in the spring. They had experienced some disturbance from visitors walking to their front door looking for a place to see the birds.

Girl Guides of Canada, neighbours of the future development, offered a lot overlooking the bay that they owned and where they wanted to build an activity centre. They lacked the funding to go ahead with their project and wanted to team up with Renewable Resources to find an acceptable solution. Ducks Unlimited was immediately considered for partnership in this venture because of past interests in the development and protection of this area.

Since the opening of the centre, collaborators have participated in the organisation of interpretive programs and special events such as the annual Celebration of Swans. The following table lists the partners and the projects that they participated in developing. In some events, other government programs or branches participate in their planning and execution .





Collaborators	Projects
City of Whitehorse, Parks and Recreation Department	↳ Promote interpretive programs in the <i>Leisure Guide</i> and provide registration services.
Yukon Conservation Society	↳ Offer interpretive programs as part of its Nature Appreciation Series. Volunteers participated in the organisation of events and public services for the Celebration of Swans '96.
Whitehorse Chamber of Commerce	↳ Provided promotion and coordination with local businesses for the Celebration of Swans '96.
Canadian Parks and Wilderness Society	↳ Participate in the organisation of events for the Celebration of Swans '96.
Canadian Wildlife Service	↳ Partners in the Waterfowl Management Plan. Participated in the development of a proposal to protect M'Clintock Bay and in the organisation of events for the Celebration of Swans '95 & '96.
Yukon Fish and Game Association	↳ Participated in the organisation of joint National Wildlife Week and Celebration of Swans events in '96
Yukon Bird Club	↳ Participated in the organisation of events and coordination of volunteers for the Celebration of Swans '95 and '96. Participated in interpretive programs offered through the City of Whitehorse's <i>Leisure Guide</i> .
Recreation and Parks Association of Yukon	↳ Financial contribution to the Conservation Society towards development of Celebration of Swans events.

## Timelines

### **February 1992**

A letter was sent to the residents of the North M'Clintock Bay Subdivision to make them aware of development plans and invite their comments. The Joe family was contacted through Pat Joe to discuss the development plans and invite comments and concerns.

### **March 1992**

The first meeting took place on March 27. Patricia Duncan, representative of Girl Guides of Canada and Julie Lefebvre, Wildlife Viewing Program representative met to discuss concerns and potential opportunities. During this meeting, Ms. Duncan tabled the suggestion of constructing a facility on the Girl Guides property. The Department of Renewable Resources would own and operate the facility and could open it to the public for springtime waterfowl viewing.

### **Summer and fall 1992**

Ducks Unlimited Canada was a natural partner to help fund and operate this type of joint venture. After approval from all three organisations, discussions began to determine the needs and expectations of each party. Discussions continued throughout the summer and into fall of 1992. The building's design; lot amenities such as privy and parking lot, and; the terms of use and privileges needed to be determined and clearly set out in an agreement.

### **July 12, 1993**

By early summer 1993, all was in place. The agreement was signed on July 12, at the site on M'Clintock Bay. A copy of the Agreement and the news release inviting the news media to the signing ceremony are provided in Appendix 1. Present for this signing ceremony were: the



Honourable Bill Brewster (standing) and Mr. Dale Eftoda at the signing ceremony.



Honourable Bill Brewster, Minister of Renewable Resources; Dale Eftoda, District Manager, Ducks Unlimited Canada; and, Patricia Duncan, Provincial Commissioner, Girl Guides of Canada. Construction of the centre began soon after.

#### **April 1994**

The centre was officially opened on April 17. Gerald Isaac, First Nations Liaison Coordinator with Renewable Resources, was instrumental in establishing contact with the local First Nations and the Yukon Native Language Centre. The name chosen for the facility was translated to 'Havre des cygnes' in French language and 'Degey Nanedel' in the Tagish language.

The opening ceremonies were attended by hundreds of Yukon residents. The Master of Ceremonies for the event was Mr. Ken McKinnon, Yukon Commissioner. Mrs. Bessie Cooley, offered a few words to bless and name the site. Representatives from each of the partner organisations were: Mr. Stewart D. Morrisson, Executive Vice-President of Ducks Unlimited Canada; Marsha Ross, Chief Commissioner of the Girl Guides of Canada; and, the Honourable Bill Brewster, Minister of Renewable Resources, Yukon Government.

Many special invitations were extended to First Nations and community organisations such as: the Council for Yukon First Nations; the Yukon Native Language Centre, Yukon First Nations and elders; the Yukon Conservation Society; the Canadian Wildlife Service; and, the Yukon Bird Club and its members.



Swan Haven visitors enjoying the facility.

### **Summer 1994**

Associations with several collaborators (see list on page 9) were formed after the opening of the centre. There was a need to team up with organisations to offer a variety of interpretive programs. The anticipated result was to use the facility throughout the year.

### **Winter 1994**

The first interpretive programs offered through the City of Whitehorse's *Leisure Guide* were launched. A series of interpretive programs on a variety of topics are planned and organised by the Wildlife Viewing Program and advertised through the Department of Parks and Recreation's quarterly publication. This association allows programming of year-round activities at the centre. These activities target families that want to take part in outdoor learning activities. This was an identified target group for the City's Department.

### **April 1996**

An evaluation of ongoing interpretive programs was completed in the spring. Visitors to Swan Haven during the spring migration were asked to fill out a short questionnaire. The focus of the questionnaire was placed on: determining audience components; reasons for visiting the centre; and, sources of information on the centre's activities. This information is crucial to ensure that the services provided meet the needs of the audience and maintain a high quality standard.

An association with the *American Bald Eagle Foundation*, organisers of the *Eagle Days Festival* in Haines, Alaska, began in the fall of 1995. The reciprocal arrangement provides an opportunity for organisers of the festivities in each jurisdiction to promote events and invite visitors to come and take part.



## Discussion

Swan Haven Interpretation Centre would not be a reality if not for the partnerships that were established. There is a marked difference between the initial developments planned for this area and the final product with the partnerships. Because of the interest from other organisations, it was also possible to find funding opportunities from various sources.

An ongoing association with the City of Whitehorse's Parks and Recreation Branch has allowed us to offer public programs. The infrastructure required to advertise and take registration for these programs was already in place with the City. This association is beneficial for both organisations. It provides the Wildlife Viewing Program with an established promotional and registration tool. As well, the City gains programs for the whole family that it did not previously offer.

The other collaborators provide a base for volunteers who are essential to put on the Celebration of Swans each spring.

Close ties with the local First Nations will need to be forged to encourage a broad audience to come enjoy the facility and the services. Future partnerships and collaborators could be developed with businesses that offer services to visitors.

# Facility description

## Design

The facility was designed by Bob Witherspoon, Architectural Projects Officer for the Design Section, Property Management in Government Services. He was the first to give the centre the name of 'Swan Haven', which would become its official name.

The building is a two-storey post and beam style construction measuring about 8 x 8 metres (24 x 24 feet). The staircase to the second floor is located in the centre of the floor space. There are two large decks, one on each floor, measuring about 4 metres (12 feet) wide running the width of the building. The top deck provides a superb view of the bay and the birds in springtime.

The design of the centre meets the standard building codes' requirements. Appendix 2 and 3 provide site and building plans respectively.

## Construction

Construction of the centre began soon after the signing of the agreement in July, 1993. The carpenter retained for the construction was Peter Heebink, a resident of the neighbourhood of the North M'Clintock Bay Subdivision.

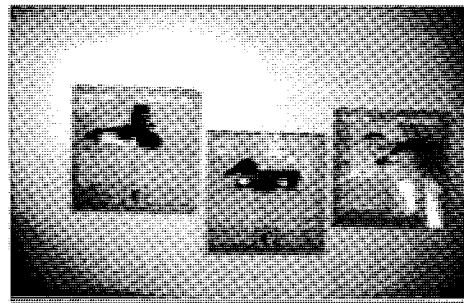
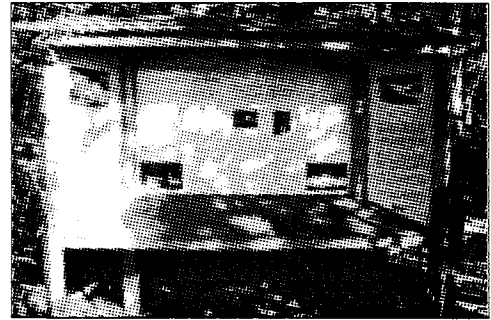
Initially, the building was set much closer to the bank than it presently stands. The neighbours voiced their dissatisfaction over the building's proximity to the bank: it blocked their view of the bay. The building was moved to accommodate their wishes and preserve the peace in the subdivision.

Several land improvements were made after the centre was built. A propane heating system was installed later that fall. Electricity and water are not available because of the additional costs involved which were

not in the budget. Further site developments included: a bear-proof garbage container; an outhouse; a 10-car parking lot; three picnic tables; and, a boardwalk and ramp from the parking lot to the first deck of the building. The boardwalk provides wheelchair access ramp to the building from the first deck.

### Interpretive displays

The goal of the interpretive displays is to provide as much information as possible on the waterfowl of M'Clintock Bay. The information provides answers to some of the



most frequently asked questions, from past experience. Interpretive displays were developed for the inside and the outside of the centre. The outside is a small three-panel display

that provides basic information on the migratory waterfowl of the bay. It is accessible to the visitors when the centre is closed.

The inside displays have downstairs and upstairs components. Located downstairs are more formal interpretive displays.

They provide technical information on the species that use the area and the reasons for its importance in the life of these birds. Upstairs displays are visual. Two mounted full-size swans hang overhead *in flight*



Top photo: outdoor display; Middle: first floor displays; bottom: 'flying' swan of second floor

as visitors climb the stairs to the second floor. The walls have large-scale murals depicting scenes from the bay. The illusion created is that the birds are flying towards the bay in search of a good landing site.

### Funding and costs

Contributor	\$
Girl Guides of Canada	\$22,100.00 (land)
Ducks Unlimited Canada	\$20,000.00
Demonstration Projects Fund of Renewable Resources	\$20,000.00
Community Development Fund of Economic Development	\$20,000.00
Employment Creation Fund of winter 1993/94	\$20,000.00
French language Fund of Queen's Printer	\$ 5,000.00
Wildlife Viewing Program	\$18,930.00

Total cost for the construction of the centre, site enhancement and interpretive displays is approximately **\$103,930.00**. This does not include the cost of the land valued at about \$22,100.00.

The centre cost a total of \$58,171.00 to construct. The landscaping and site improvements cost \$17,237.00 while the cost of the static interpretation was \$28,522.00. Appendix 4 gives a list of all expenditures for each section of development of the centre. The labour provided by the Y<sup>2</sup>C<sup>2</sup> crew is not included in the expenses. Taxidermy services for the two swans was donated by Tony Grabowsky.

Operational costs for maintenance, repair and services are still low. Total annual costs for the centre range from \$4,000.00 to \$5,000.00. This includes an annual contract awarded for the sum of \$3,500.00 to provide interpretive services during the waterfowl migration. The propane tank was refilled once at a cost of about \$100.00 and garbage removal is done by the



contractor or employees when using the centre. Promotion and advertising fees for the centre and the Celebration of Swans are about \$1,000.00 annually. Many activities and events are funded through the various partnerships by in-kind donations or by obtaining funding from a variety of sources such as corporate sponsorships.

### Activities at the centre

Before the centre opened, there was much activity in the bay in springtime. Some of this activity disturbed the birds considerably. Among some of the more disruptive behaviour were the snowmobilers that would come out to the edge of the ice to see the swans fly. Other people boated up the river into the bay. This still happens but with time and education, less of this type of behaviour occurs.

The centre has successfully concentrated the activities in one site. This will, in the long term, reduce the impact on the bay from all this human activity. People that visit the site become more aware of the need to protect special areas such as this one. They also gain a better understanding of the importance of key habitats for wildlife. These were some of the management objectives that were determined at the beginning of the project and set out in a strategic plan. A copy of this plan is provided in Appendix 5.

Throughout the year, the centre has become a place for learning. Workshops and interpretive talks are held periodically. Interpretive programs are offered through the City of Whitehorse and are well attended. The Girl Guides use the centre during their camp-outs at Sprucewind, their nearby camp. Additional activities and projects for the centre are still being developed.

# Recommendations

The demand and expectations for quality outdoor education and appreciation programs continue to grow. It is time to consider adjusting the interpretive programs and displays in order to meet the demand and expectations of visitors and residents. Planning of new developments should acknowledge the different audiences that use the facility. With time and dedication, the centre has the potential of becoming a great tourism attraction to a site known for its North American importance to waterfowl enthusiasts (who number in the thousands).

Some specific improvements that would benefit the users of the facility would be:

1. Installation of water and electrical services. Electricity is especially important to use the facility for audio-visual presentations and the new displays could be computerized or interactive-type displays. These types of displays have many advantages over the static information. They offer users the exact answers they seek without having to read through a lot of information.
2. Additional or improvement of existing parking. During congested periods, it becomes difficult to safely park along the road. The road design should be inspected by Highway engineers to determine possible improvements.
3. Shuttle buses from Whitehorse to the centre on Sundays would provide some relief from the traffic congestion. By forming a partnership with a hotel or tour operating business, this endeavour would be economically possible.
4. An information panel is needed at the boat launches next to the Yukon River bridge as well as the M'Clintock River bridge. This panel would inform recreational boaters about the swans in the bay and the dangers posed to the birds by boating too close to them.



# Appendix 1: Agreement

**THIS AGREEMENT** made this 12th day of July, 1993.

**BETWEEN:**

GIRL GUIDES OF CANADA- YUKON COUNCIL, a society registered under the Societies Act, having its head office in Whitehorse, as represented by the Provincial Commissioner

(the 'Girl Guides')

**AND:**

DUCKS UNLIMITED CANADA, a non-profit corporation having its head office in the Province of Manitoba, Canada, as represented by the Regional Manager

('DU')

**AND:**

THE GOVERNMENT OF THE YUKON, as represented by the Minister of Renewable Resources

(the 'Yukon')

**WHEREAS:**

- A. The spring staging of swans and other waterfowl at M'Clintock Bay at the outlet of Marsh Lake, Yukon is a natural feature of recognized local and international significance;
- B. Yukon develops and conducts wildlife interpretive projects as part of a "Wildlife Viewing Program" of its Fish and Wildlife Branch;
- C. DU is dedicated to the development of projects for the

conservation of migratory waterfowl and their habitats;

- D. The Girl Guides pursue a mission which includes working cooperatively with others and learning about the natural environment and how to preserve it;
- E. The Girl Guides are agreeable to having the lot they own on the shoreline of M'Clintock Bay, namely Lot 377, Group 804, Marsh Lake, Yukon, Plan 24066 (the "Lot"), used for public interpretation of natural features of the area, subject to certain conditions more particularly set out herein;
- F. Yukon currently conducts an interpretation project from a public right-of-way adjacent to the Lot;
- G. The parties are of the view that a small interpretive centre with static and naturalist assisted displays on the edge of the staging area will play an important role in the proper management, enjoyment and protection of the area;
- H. Yukon and DU are prepared to contribute to costs of the development of an interpretive building and displays, subject to certain conditions more particularly set out herein;

**IN CONSIDERATION OF** the promises and agreements herein contained, the parties agree, each with the other as follows:

### **1.0 CONSTRUCTION OF INTERPRETIVE FACILITY**

- 1.1 The Girl Guides will permit the construction of mutually agreeable interpretive structures, including a small building, interpretive signs, walkways, vehicle parking areas, garbage facilities, washrooms and other compatible structures (the "Facility") on the Lot.
- 1.2 Yukon will prepare site and structure plans for the Facility.



- 1.3 No site work or construction will be commenced until final site and structure plans for the Facility are approved by all three parties.
- 1.4 DU will provide services and materials required for the development of the Lot in preparation for site construction and landscaping for public use.
- 1.5 Yukon will contribute up to forty-two thousand (\$42,000.00) dollars for materials and labour necessary to construct the Facility.
- 1.6 The Girl Guides will permit Yukon, DU, and their officers, contractors and field personnel free access to the Lot for the purpose of developing site and structure plans for the Facility and, once the final site and structure plans are approved by all three parties, for the purpose of constructing the Facility.
- 1.7 DU and Yukon shall cause the Facility to be constructed in accordance with the final site and construction plans as approved by all three parties, and in a good and workmanlike manner, and in accordance with all applicable building codes and regulations.
- 1.8 DU will contribute building materials to be incorporated into the Facility and DU will fund interpretive displays and signage, all up to a maximum of twenty thousand (\$20,000.00) dollars.
- 1.9 The contributions of all the parties will be acknowledged on signage at the Facility in a manner mutually acceptable to the parties.

## **2.0 USE AND MAINTENANCE OF THE FACILITY**

- 2.1 Girl Guides will maintain a calendar of bookings for the Facility in their office in Whitehorse, by which each party may reserve the Facility for their exclusive use.

- 2.1.1 Conflicts between the parties for bookings will be resolved by mutual agreement with priority given to Yukon and DU use during March 15 to May 31 and priority at all other times given to use by the Girl Guides
- 2.2 Yukon and DU will maintain the Facility and Lot in a good and safe condition, which maintenance will include, without limiting the generality of the foregoing, removal of garbage from the Lot.
- 2.3 Yukon will post on the Lot "no public camping" and "no open fires" signage.
- 2.4 Girl Guides will permit free access to the Lot by Yukon, DU and the general public for the purpose of using the Facility for the interpretation of natural features of the area under the general direction of DU and Yukon at all times booked by Yukon or DU pursuant to 2.1.
- 2.5 Girl Guides will permit free access to the Lot by the general public for the purpose of using the Facility for the interpretation of natural features of the area under the general direction of DU or Yukon at any times not otherwise booked by any of the parties, at the request of DU or Yukon respectively, from time to time.
- 2.6 Each party will ensure that the Facility is clean and properly closed up after their own use.
- 2.7 Girl Guides will be responsible only for repairing any damage to the Facility which results from their use of the Facility.

### **3.0 SURROUNDING WETLAND AREA**

- 3.1 Yukon will pursue, in consultation with DU and the general public, all practical avenues for protecting the M'Clintock Bay wetland area.

3.2 Yukon will provide a mechanism for public input in the planning and management of the M'Clintock Bay wetland area.

#### **4.0 OWNERSHIP AND RISK**

4.1 The Lot will remain the exclusive property of the Girl Guides and the Girl Guides consent to Yukon registering a caveat respecting this Agreement against the title to the Lot.

4.2 The Facility will be deemed to be the personal property of Yukon, notwithstanding that it maybe affixed to the Lot, and will, subject to the terms of this Agreement, remain at the risk of Yukon.

4.3 Upon termination of this Agreement

4.3.1 Yukon may, within fifteen (15) days following the termination of this Agreement, elect to remove the Facility from the Lot and if Yukon so elects, it shall, as soon as practicable, remove the Facility and, to the extent practicable, repair the Lot to its original, natural condition;

4.3.2 The Girl Guides may, within fifteen (15) days following the termination of this Agreement, require Yukon to remove the Facility and if the Girl Guides so elect, Yukon shall, as soon as practicable, remove the Facility and, to the extent practicable, repair the-lot to its original, natural condition;

4.3.3 Failing an election under 4.3.1 or 4.3.2, the Facility shall become the property of the Girl Guides, as is.

4.4 In the event of substantial destruction of the Facility by fire, vandalism or other risk normally insured against, Yukon shall, at its option, either rebuild the Facility or remove the Facility from the Lot and, to the extent practicable, repair the Lot to its original, natural condition.

- 4.5 Yukon will indemnify and save harmless the Girl Guides and DU from and against all claims and demands of any nature whatsoever made by any person arising in connection with the use of the Facility during the term of this Agreement, excepting always any claim or demand of any nature whatsoever arising by the neglect, default or misconduct by any member of the Girl Guides or of DU, their officers, employees or invitees, and this indemnity shall survive the termination of this Agreement.
- 4.6 DU will indemnify and save harmless the Girl Guides and Yukon from and against all claims and demands of any nature whatsoever made by any person arising from any neglect, default or misconduct of DU, its officers or field personnel arising in connection with the use of the Facility during the term of this Agreement, excepting always any claim or demand of any nature whatsoever arising by the neglect, default or misconduct of any member of the Girl Guides or of Yukon, their officers, employees or invitees, and this indemnity shall survive the termination of this Agreement.
- 4.7 The Girl Guides will indemnify and save harmless the Yukon and DU from and against all claims and demands of any nature whatsoever made by any person arising from any neglect, default or misconduct of the Girl Guides, its officers, employees and invitees arising in connection with the use of the Facility during the term of this Agreement, excepting always any claim or demand of any nature whatsoever arising from the neglect, default or misconduct of any officer, contractor or field personnel of Yukon or of DU, and this indemnity shall survive the termination of this Agreement.
- 4.8 No party will assign its interest in this Agreement without the prior written consent of the other party and this Agreement shall enure to the benefit of and be binding on the successors and permitted assigns of the parties.



## **5.0 TERMINATION**

- 5.1 Subject to 5.2; this Agreement will remain in force for a period of thirty (30) years from the date first written above, and will renew automatically from year to year thereafter, provided that any party may terminate any renewal by giving to the other parties one calendar year's prior written notice.
- 5.2 Yukon or Girl Guides may terminate this Agreement by giving the other parties ninety (90) days prior written notice upon the happening of any of the following events:
- 5.2.1 the failure to substantially complete construction of the Facility within three years of the date first set out above;
  - 5.2.2 if any party breaches any of its obligations under the Agreement and does not remedy the breach within thirty (30) days of receiving written notice specifying the breach and demanding compliance with the terms of this Agreement;
  - 5.2.3 Yukon elects to remove the Facility from the Lot pursuant to 4.4.

**IN WITNESS WHEREOF** the parties hereto have executed this Agreement as of the day and year first above written.

**GOVERNMENT OF THE YUKON**

\_\_\_\_\_  
Minister of Renewable Resources      Witness

**DUCKS UNLIMITED CANADA**

\_\_\_\_\_  
Regional Manager      Witness

(seal)

**GIRL GUIDES OF CANADA --YUKON COUNCIL**

\_\_\_\_\_  
Provincial Commissioner      Witness

(seal)

## **NEWS RELEASE**

July 12, 1993 #110

### **AGREEMENT SIGNED TO BUILD M'CLINTOCK BAY VIEWING FACILITY**

WHITEHORSE - Ducks Unlimited Canada, the Yukon Council of Girl Guides of Canada - Guides du Canada and the Department of Renewable Resources signed a cooperative agreement today for the construction of a permanent wildlife viewing facility at M'Clintock Bay south of Whitehorse.

"This agreement is the first of its kind in the Yukon," says Bill Brewster, Minister of Renewable Resources, "and it shows the excellent way in which government and non-profit organizations can work together to provide a beneficial service to the public."

The facility will be built on beachfront property owned by Girl Guides in the North M'Clintock Bay subdivision, near the territorial Girl Guide campsite called "SpruceWind."

It will be a nature centre, informally named "Swan Haven" where the public can come and enjoy the spring migration of waterfowl in the bay. Interpretive programs will be offered.

"Guiding in the Yukon fully supports this opportunity to enhance the public's appreciation and knowledge of our environment," says Yukon Council provincial commissioner Pat Duncan.

"We are pleased to be able to take part in a project which complements our organization's goals and objectives and provides a valued service to the community."

Dale Eftoda, Yukon manager of Ducks Unlimited Canada says: "This facility will enhance the public's knowledge of waterfowl and wetlands, and will help insure the protection of such invaluable habitats."

Ducks Unlimited Canada is contributing \$20,000 towards this initiative.

The Yukon government's Wildlife Viewing Program will share management responsibilities for the facility with Ducks Unlimited Canada. This program is responsible for the development of wildlife viewing opportunities throughout the Yukon.

The Community Development Fund, administered by the Department of Economic Development, will contribute \$22,412 and the Environmental Demonstration Fund, operated by the Department of Renewable Resources, will provide \$20,000.

The cost for constructing this facility is estimated at \$62,400.

Construction will begin later this month and is expected to be completed by winter. The official opening of this centre will be held next spring.

- 30 -

Contact:

Pat Duncan,  
Yukon Council of Girl Guides Canada,  
(403) 667-7545 or 667-2455

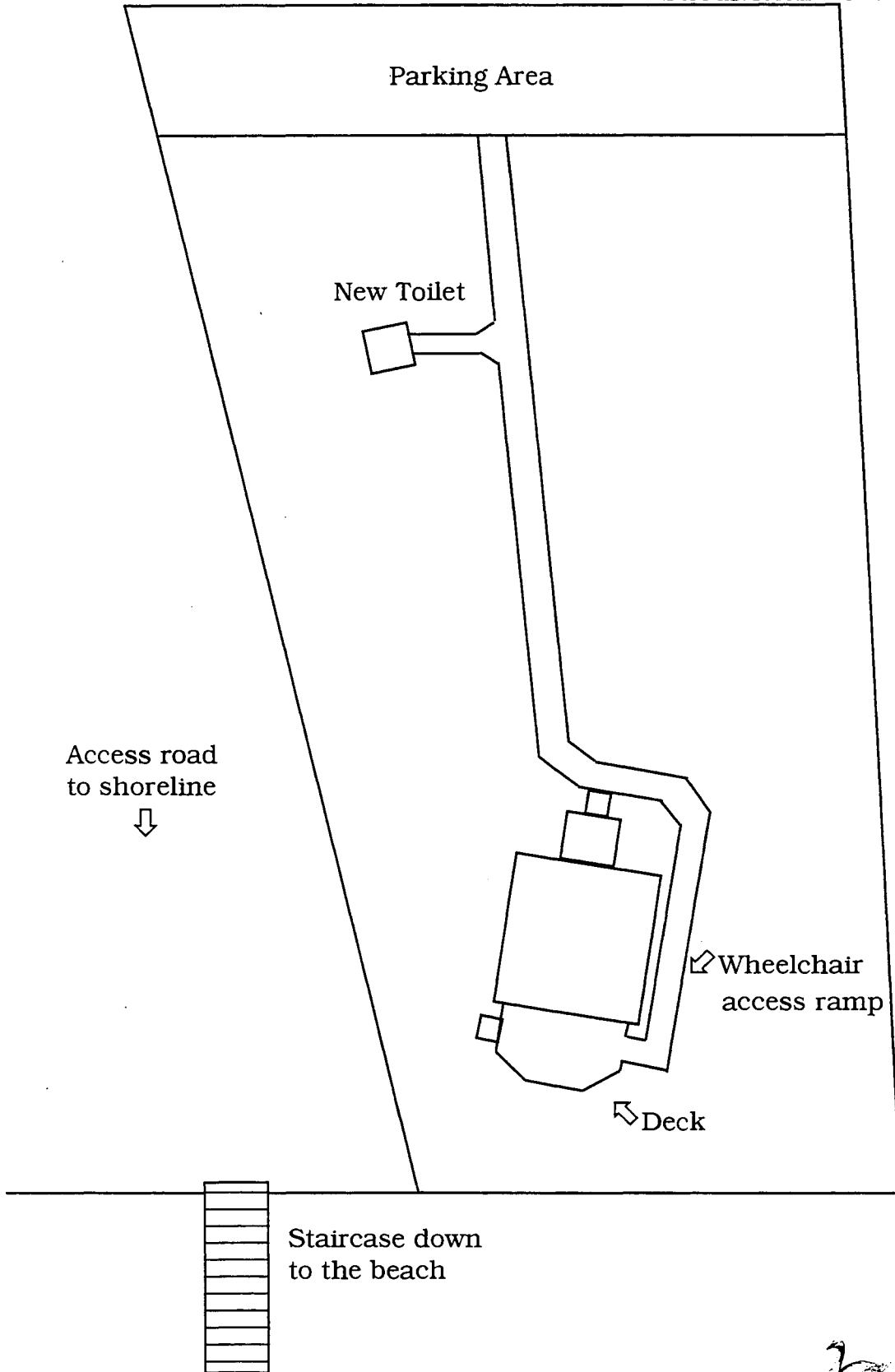
Dale Eftoda,  
Ducks Unlimited Canada,  
(403) 668-3825

Julie Lefebvre,  
Department of Renewable Resources,  
(403) 667-8291

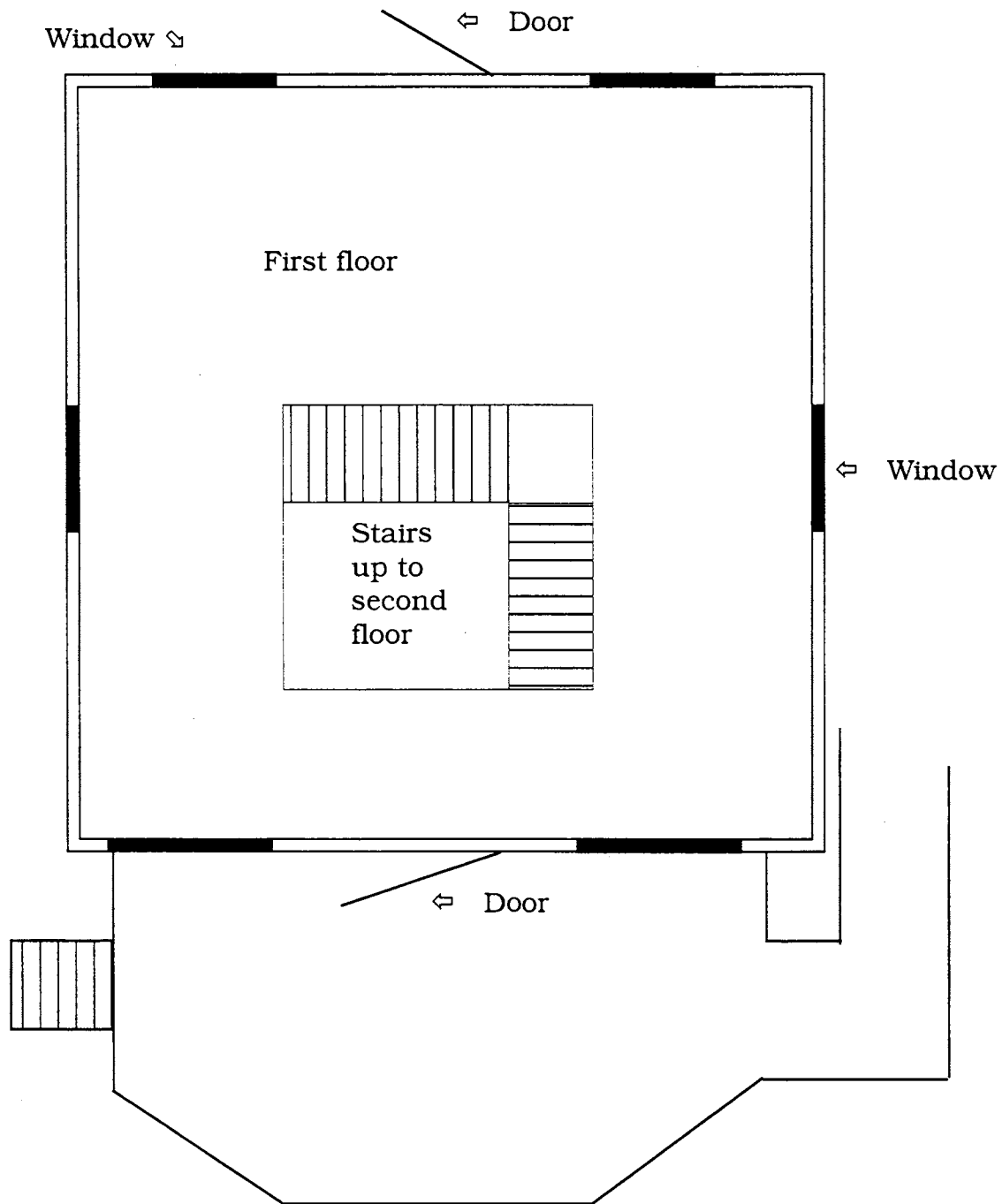


# Appendix 2: Site Plan

North M'Clintock Bay  
Subdivision Road



# Appendix 3: Building Plan



Second floor layout is identical to the first floor. There are minor differences on the deck, the second floor decks do not have stair case access from the outside.

## Appendix 4: Capital Expenditures.

<b>Construction details:</b>	<b>\$</b>	<b>Source</b>
Design	2,700.00	Govt. Services
Site clearing	(368.00)	Y <sup>2</sup> C <sup>2</sup>
Site preparation	441.00	Annie Lake Trucking
Site levelling	200.00	Contractor
Building permit	300.00	C&TS
Materials	31,500.00	Kilrich Industries
Construction	20,830.00	Peter Heebink
Site Inspection	250.00	Govt. Services
Heating purchase and installation	1050.00	ICG Liquid Gas Ltd
Finishing	900.00	Worthington Contracting
<b>Total</b>	<b>58,171.00</b>	
<b>Site additions:</b>		
Sceptic tank purchase and installation	1,331.00	John's Sales and Services and Total Track Yukon
Outhouse	2,675.00	Duncan's Limited and Career Industries
Entrance sign	1,500.00	Parks & Recreation
Bear -proof garbage can	900.00	Parks and Recreation
Picnic tables	750.00	Parks and Recreation
Boardwalk and ramp	9,185.00	Dontech Consulting, Klondike Welding, Career Industries and Peter Heebink
Parking	330.00	Annie Lake Trucking
Bank stabilizing	566.00	Annie Lake Trucking
<b>Total</b>	<b>17,237.00</b>	
<b>Interpretation:</b>		
Indoor upstairs	4,432.00	Thomas Rodgers
Swans	(1,200.00)	Donated by Tony Grabowsky
Downstairs	20,000.00	Great River Advertising
Outdoor display	4,090.00	Tundra Graphics and Thom Rodgers
<b>Total</b>	<b>28,522.00</b>	

# Appendix 5: Strategic Plan

## Goal

Swan Haven is a multi-use interpretation centre developed to highlight the spectacular springtime event of the migration of thousands of trumpeter and tundra swans through M'Clintock Bay. It also provides opportunities for wildlife viewing as well as outdoor education and appreciation.

## Objectives

- ↳ Enhance the public's understanding and appreciation of wildlife and wilderness
- ↳ Increase visitor and resident awareness and appreciation of the swans as well as the value of places such as M'Clintock Bay to migrating birds
- ↳ Encourage wildlife related tourism opportunities to Yukon during the off-season
- ↳ Promote outdoor recreation opportunities that support the non-consumptive values of wildlife
- ↳ Encourage residents to actively participate in the conservation of wildlife and their habitats
- ↳ Encourage Yukon residents to explore the territory

## Audiences

- ↳ Yukon residents and off-season visitors who engage in wildlife viewing activities such as nature hikes and photography
- ↳ School groups who participate in outdoor education and wildlife viewing activities that highlight wildlife and wilderness appreciation and understanding
- ↳ Families seeking outdoor learning and wildlife viewing opportunities to gain a greater appreciation of the environment





## Interpretive Programs (strategies)

- ↳ Establish Interpretive theme and storylines for development of the centre's displays and publications
- ↳ Deliver interpretation during the month-long migration of waterfowl
  - ✓ Deliver on-site information to the public using a contracted interpreter
  - ✓ Offer school presentations tailored to curriculum requirements on a full-day or half-day basis. Use Project Wild activities to reinforce messages
  - ✓ Create and promote 'Celebration of Swans', a week-long special event to highlight the unique springtime event of the migration of thousands of trumpeter and tundra swans and other waterfowl
  - ✓ Encourage the participation of volunteers in the development and delivery of interpretive activities to promote community involvement and support
- ↳ Develop year-round interpretive activities that will attract residents and promote a better understanding and appreciation of Yukon's wildlife and wilderness
  - ✓ Encourage local experts to host workshops and presentations for people of all ages
  - ✓ Develop partnerships with community organisations, other government branches or local businesses to deliver quality Interpretive activities and programs.
  - ✓ Promote activities to attract interest of residents by using established community information sources
- ↳ Provide access to facility for community groups that support non-consumptive values of resources or offer environmental education opportunities

## Expected results

- ↵ Greater understanding and appreciation of wildlife and their habitat from residents and visitors
- ↵ Increased public support for the protection of critical wildlife habitats
- ↵ Increased participation in non-consumptive outdoor activities by Yukon residents
- ↵ Increased tourism during the off-season

## Evaluation

- ↵ Observe changes in resident attitude to viewing and habitat protection, noting increased awareness and participation in non-consumptive wildlife activities
- ↵ Monitor participation in organised outdoor activities for the public
- ↵ Record attendance at special events and public workshops



# Notes

The information in this report was compiled by the Wildlife Viewing Program of the Department of Renewable Resources. For more information on the programs offered at Swan Haven Interpretation Centre or to obtain other copies of this report contact:

Julie Lefebvre  
Wildlife Viewing Biologist  
Renewable Resources  
Yukon Government  
Box 2703  
Whitehorse, Yukon Y1A 2C6  
(403) 667-8291

