



# Yukon Water Monitoring Networks Map Book

Last Updated: January 2024

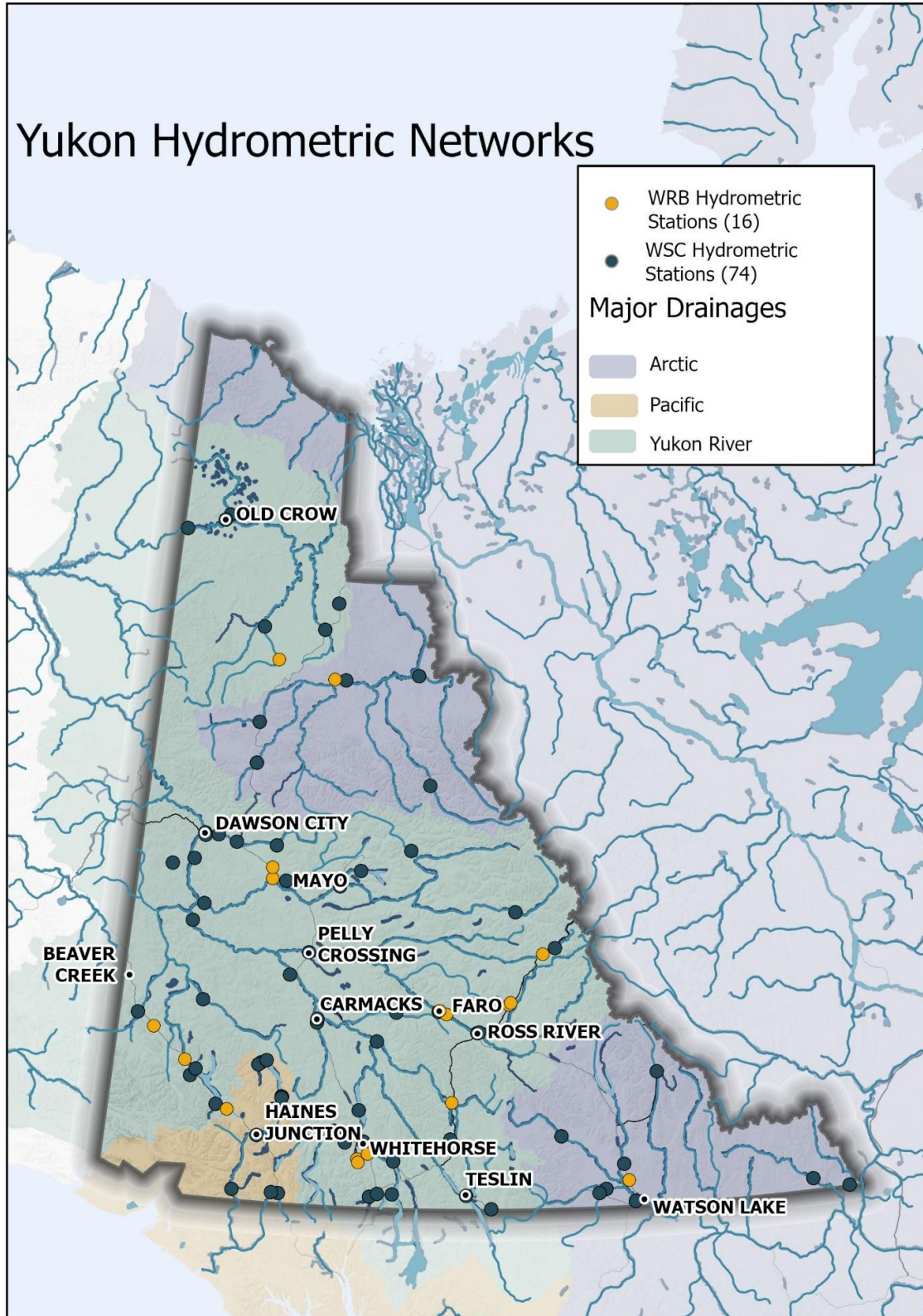
This Map Book is intended to showcase the hydrometric, snow, meteorological and groundwater monitoring networks operated and funded by the Government of Yukon's Water Resources Branch.

# Contents

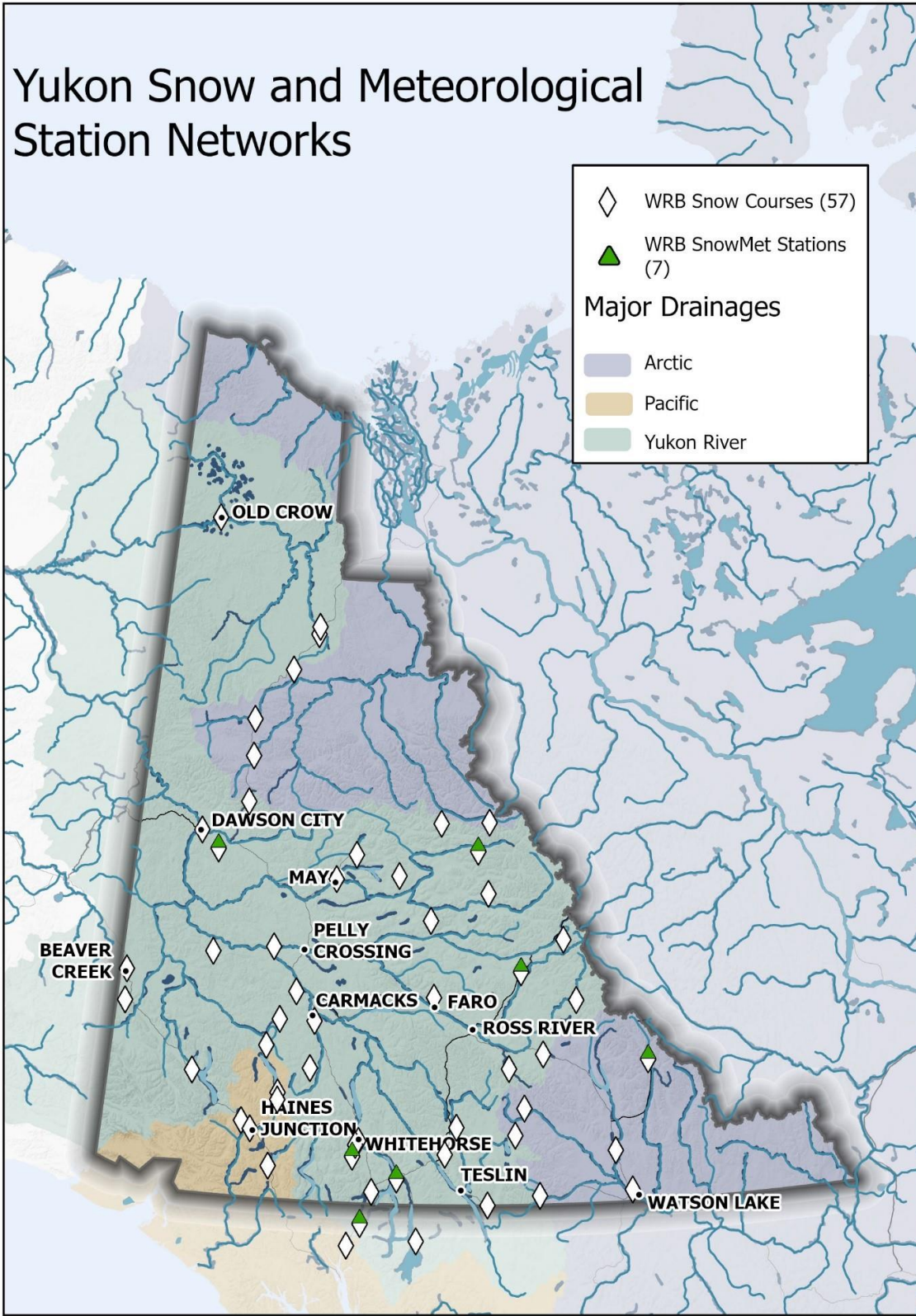
Yukon maps.....	2
Yukon Hydrometic Networks.....	2
Yukon Snow and Meteorological Networks.....	3
Yukon Observation Well Network.....	4
Major river basin maps.....	5
Upper Yukon River.....	5
Teslin and Big Salmon River.....	6
Central Yukon River.....	7
Pelly River.....	8
White River.....	9
Stewart River.....	10
Lower Yukon River.....	11
Liard River.....	12
Porcupine River.....	13
Alsek River.....	14
Peel River.....	15

# Yukon maps

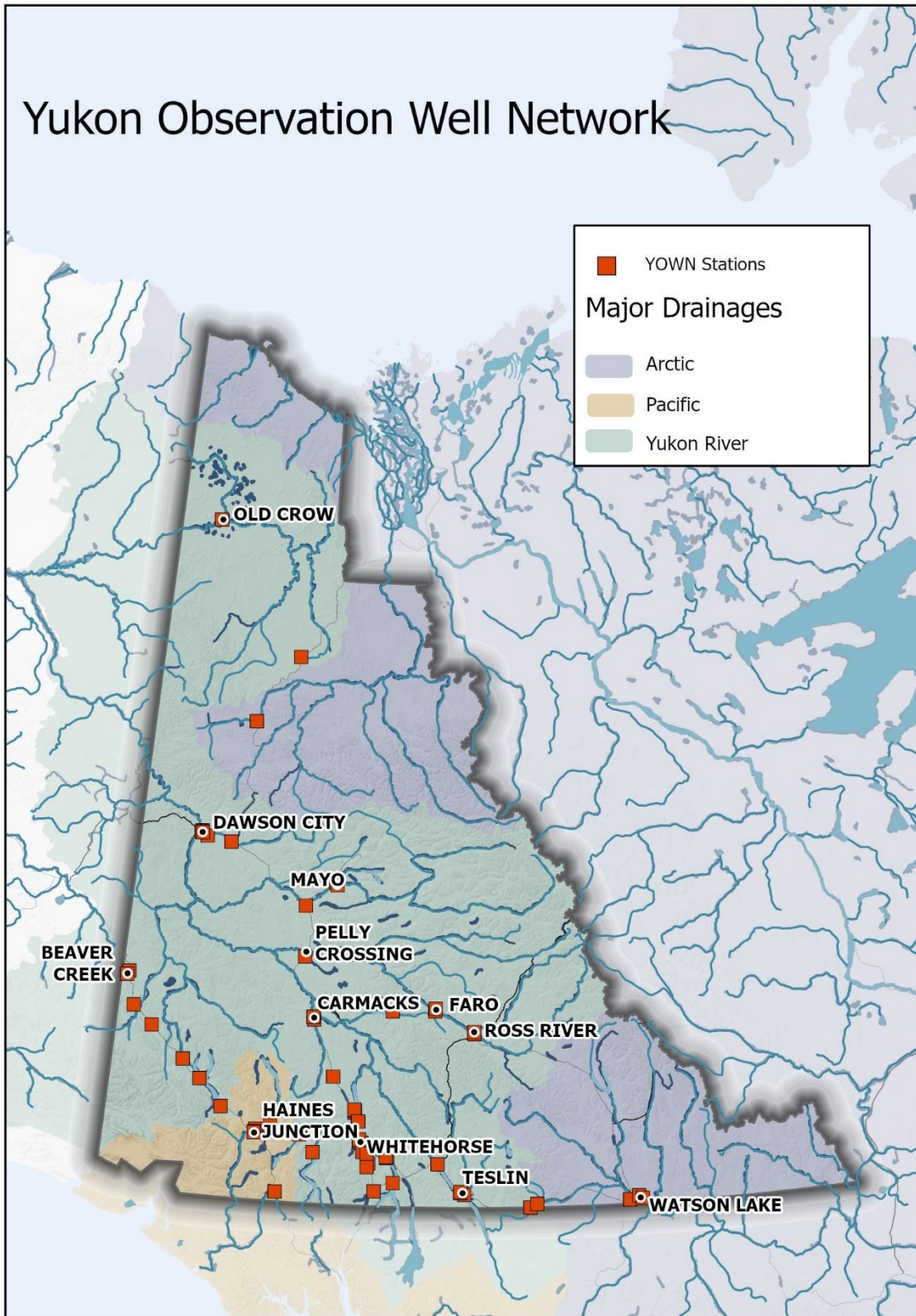
## Yukon Hydrometric Networks



# Yukon Snow and Meteorological Networks

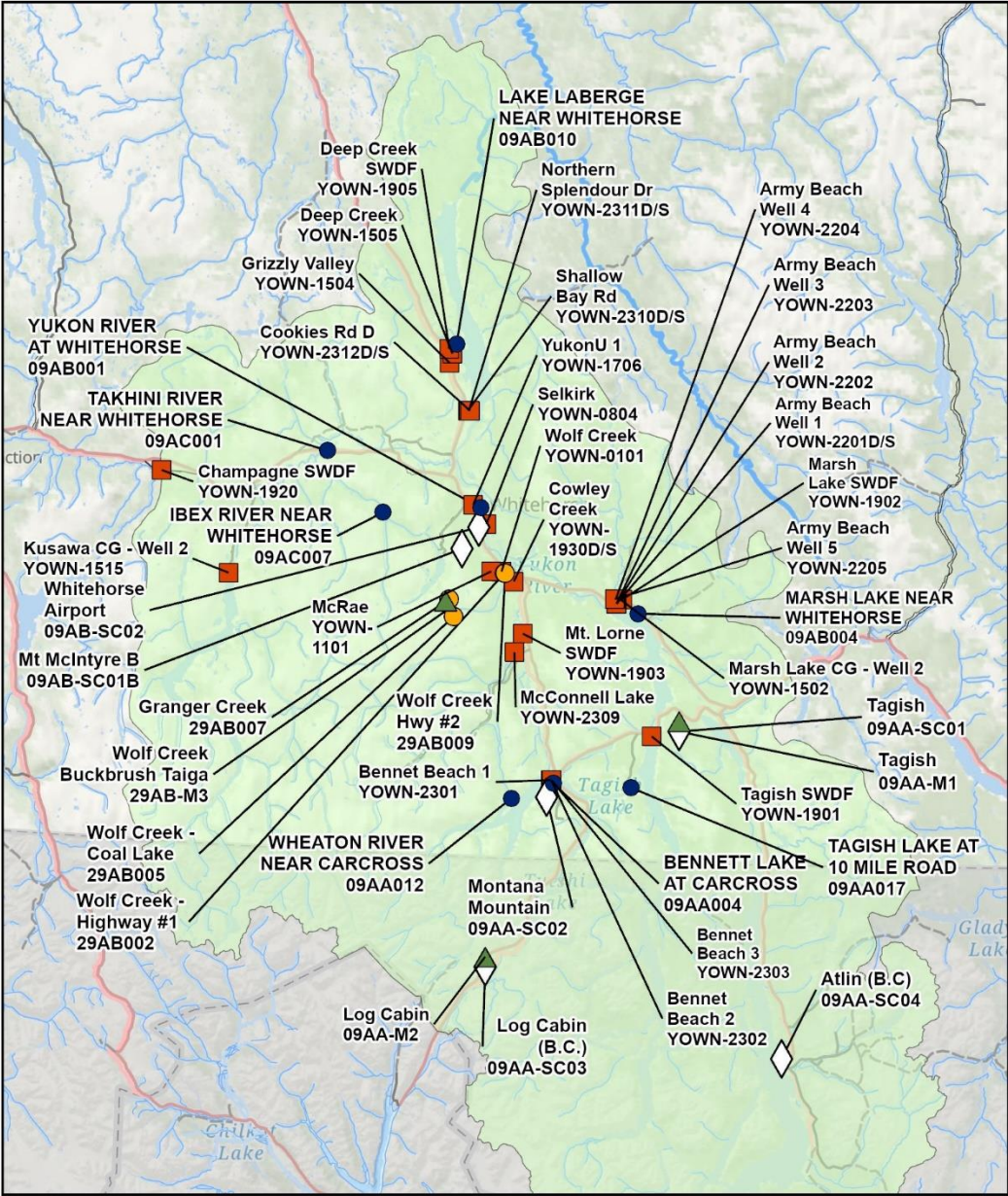


# Yukon Observation Well Network



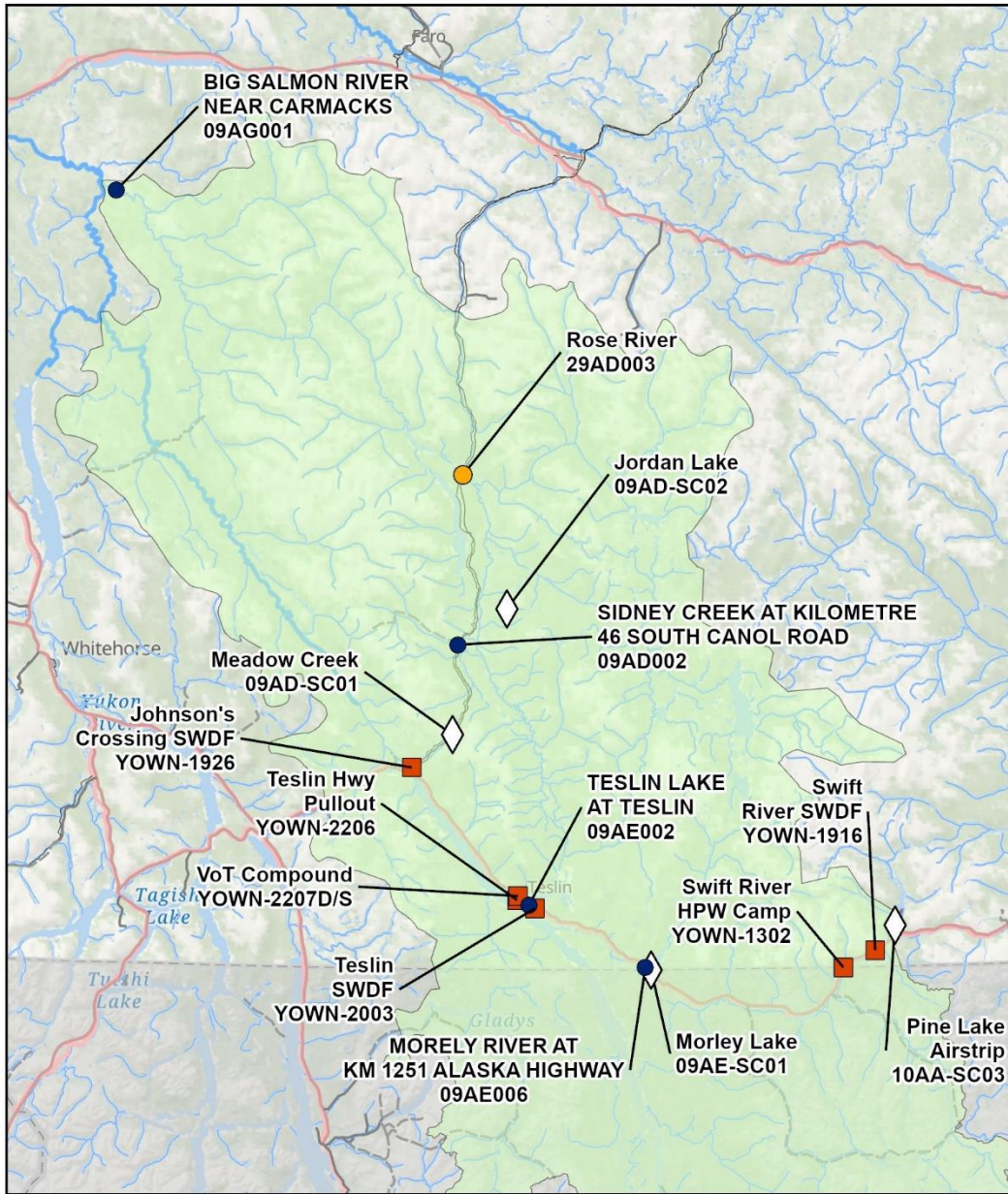
# Major river basin maps

## Upper Yukon River



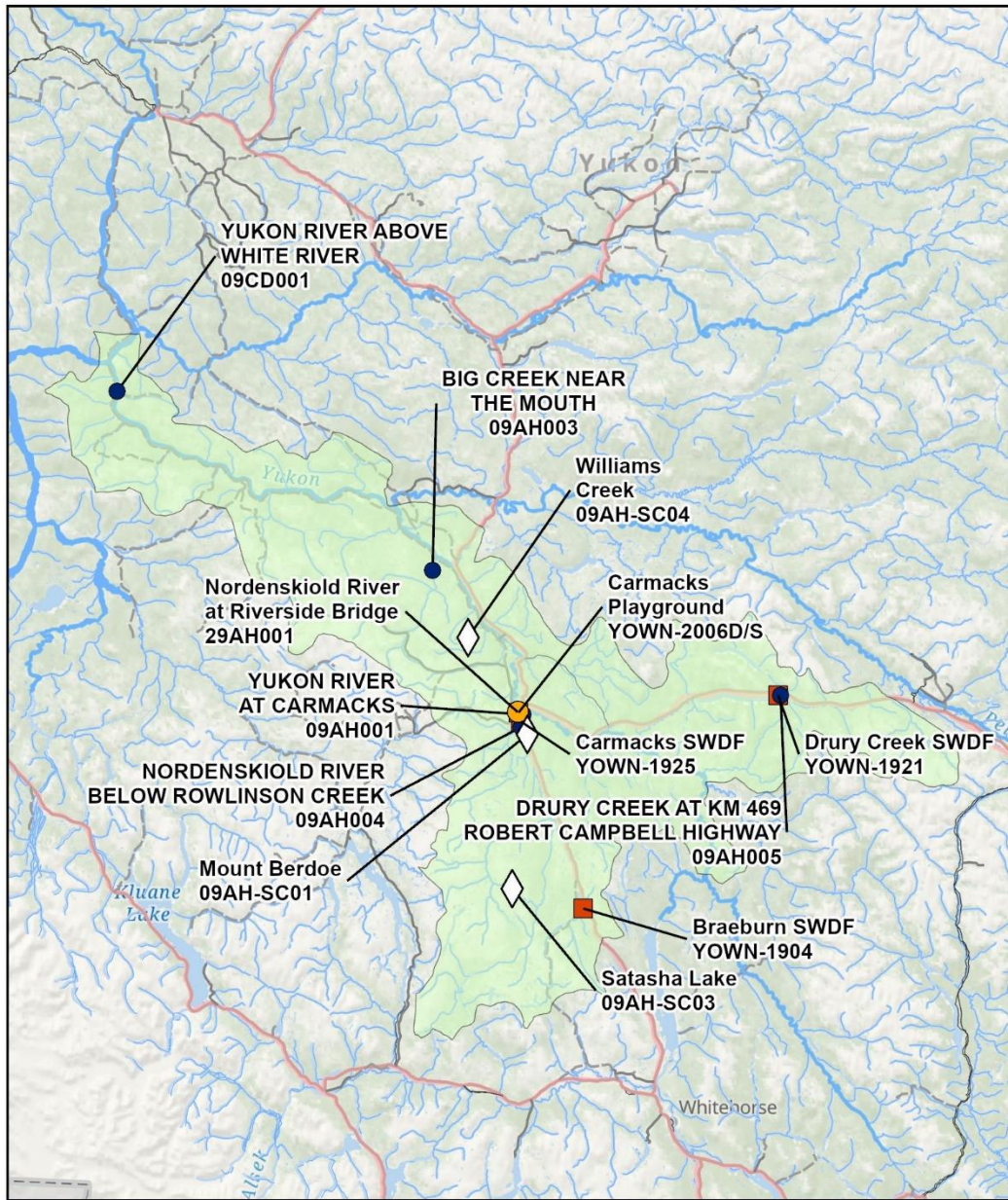
		WRB SnowMet Station WRB Snow Course WRB Hydrometric Station WSC Hydrometric Station WRB YOWN Station	<h3>Upper Yukon River</h3>
	Department of Environment Water Resources Branch 2024		

# Teslin and Big Salmon River



		<ul style="list-style-type: none"> <li> WRB SnowMet Station</li> <li> WRB Snow Course</li> <li> WRB Hydrometric Station</li> <li> WSC Hydrometric Station</li> <li> WRB YOWN Station</li> </ul>	<h2>Teslin &amp; Big Salmon River</h2>
	Department of Environment Water Resources Branch 2024		

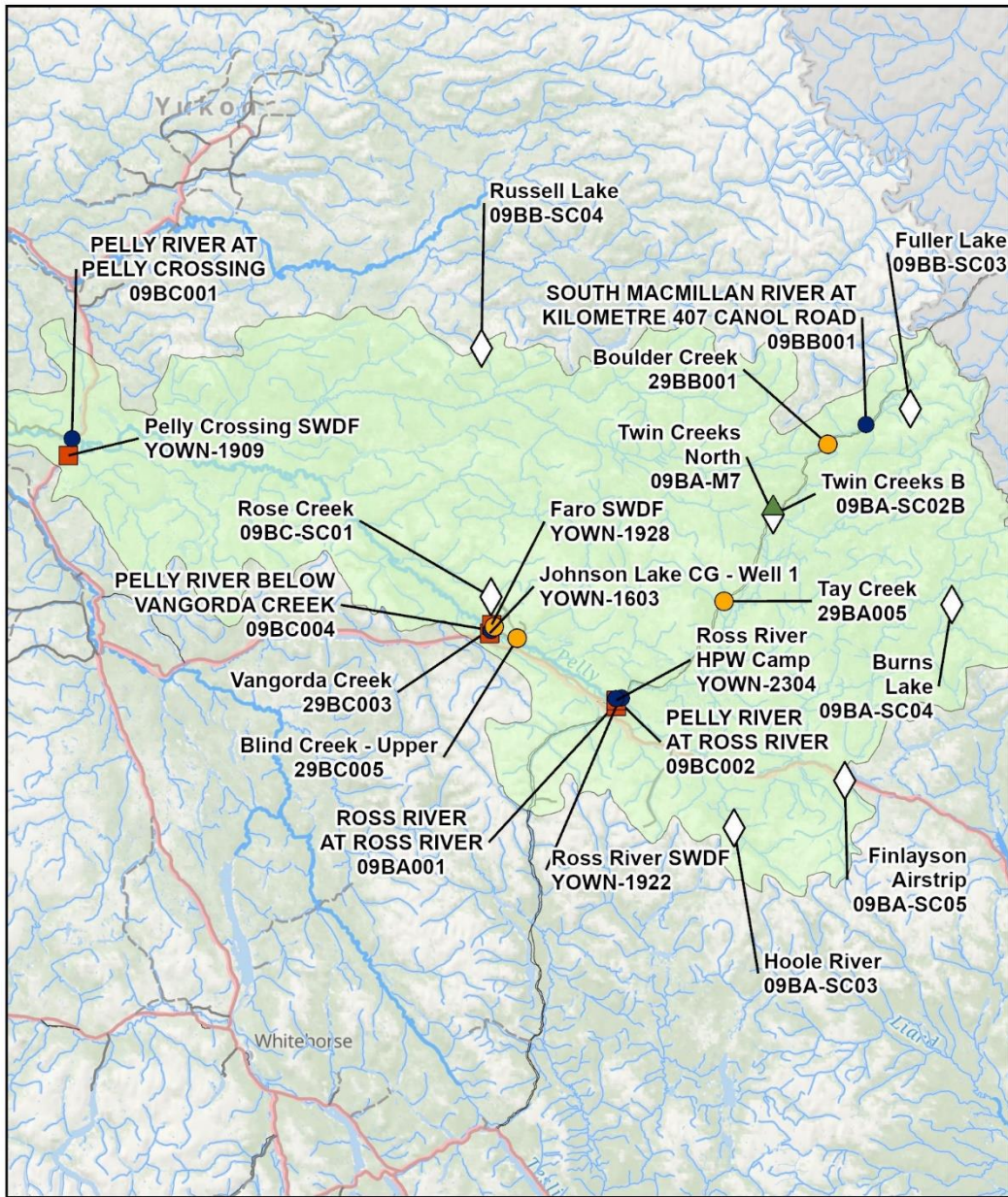
# Central Yukon River



		WRB SnowMet Station WRB Snow Course WRB Hydrometric Station WSC Hydrometric Station WRB YOWN Station	<h2>Central Yukon River</h2>
	Department of Environment Water Resources Branch 2024		

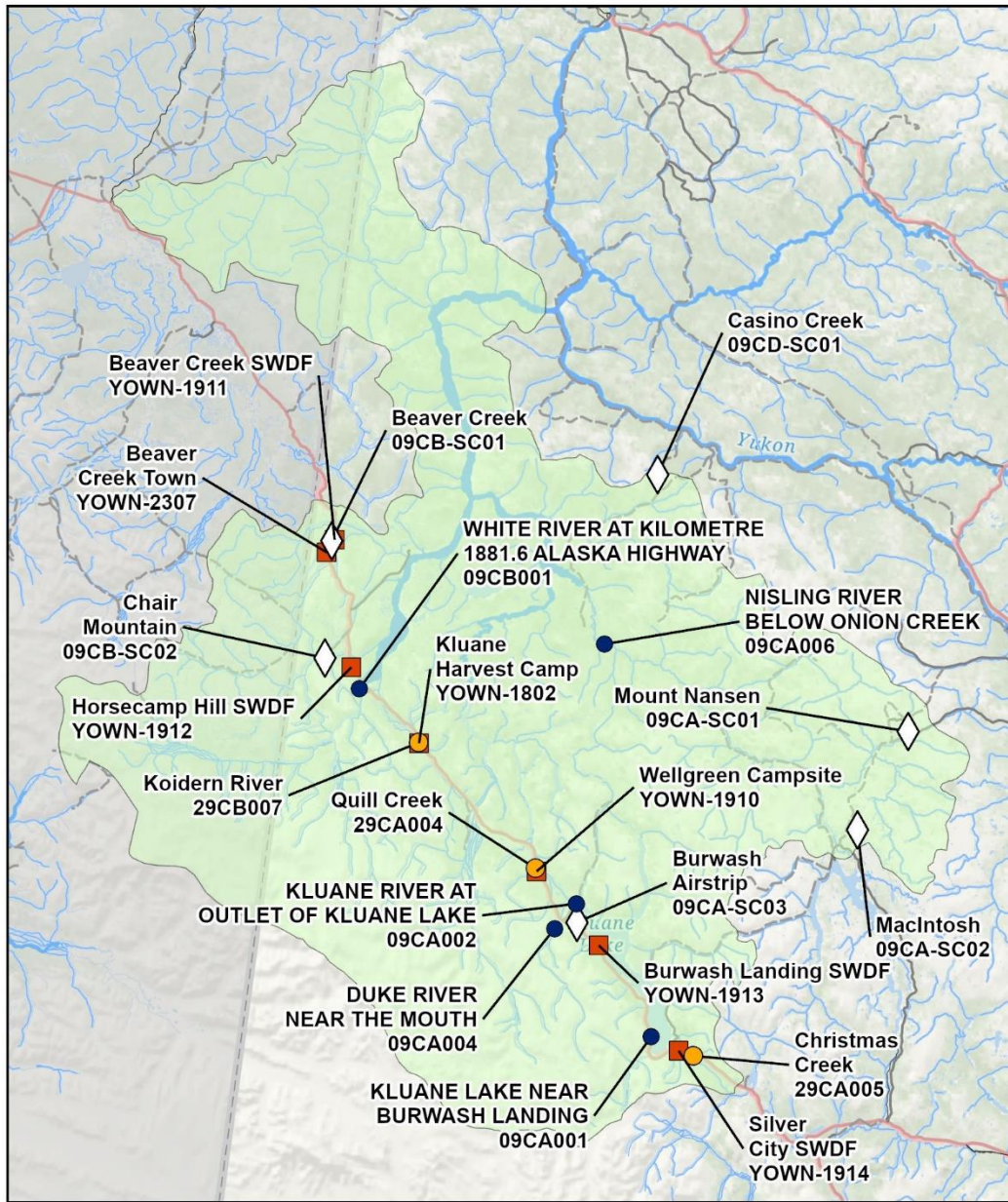


# Pelly River



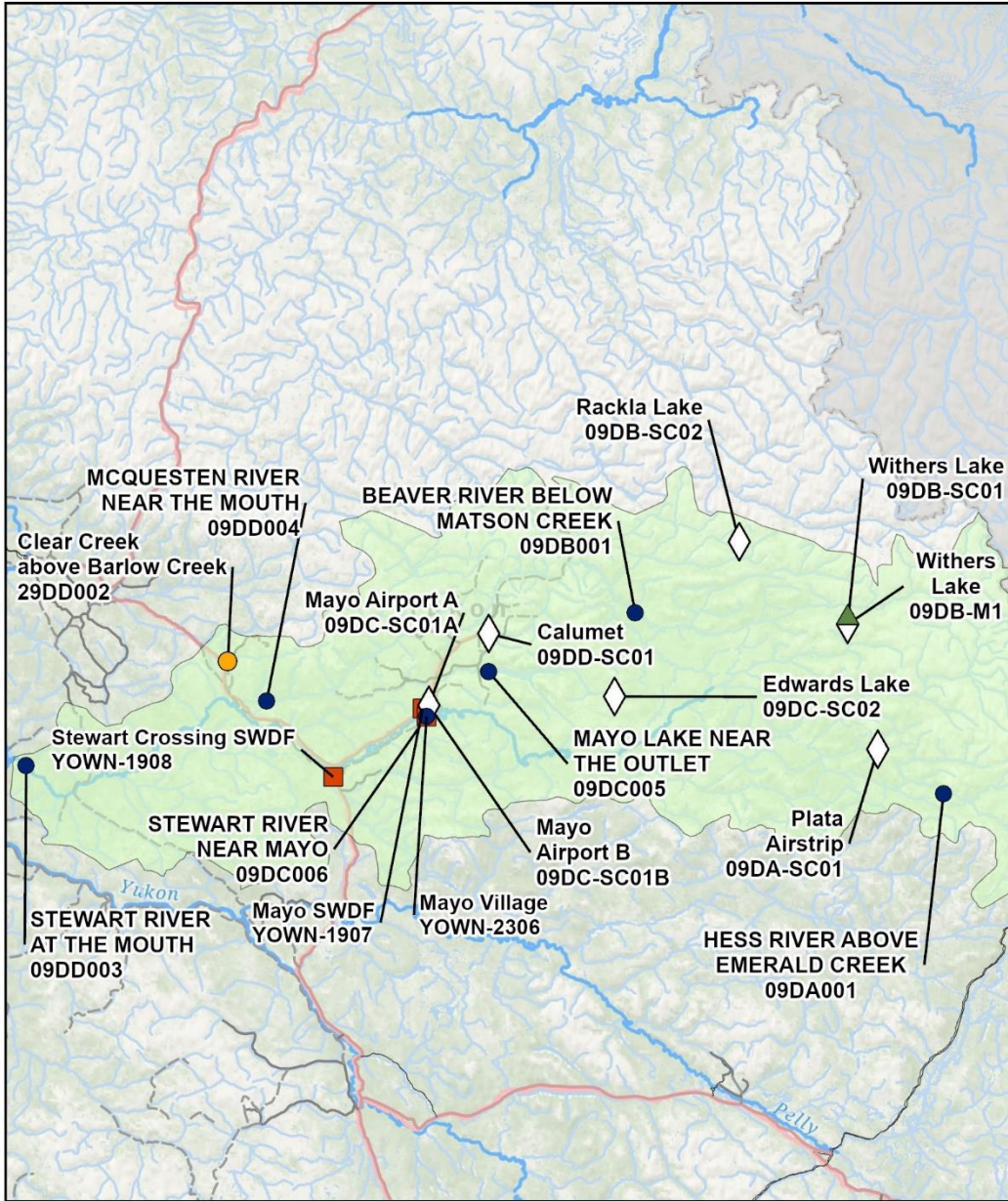
		WRB SnowMet Station WRB Snow Course WRB Hydrometric Station WSC Hydrometric Station WRB YOWN Station	<h2>Pelly River</h2>
	Department of Environment Water Resources Branch 2024		

# White River



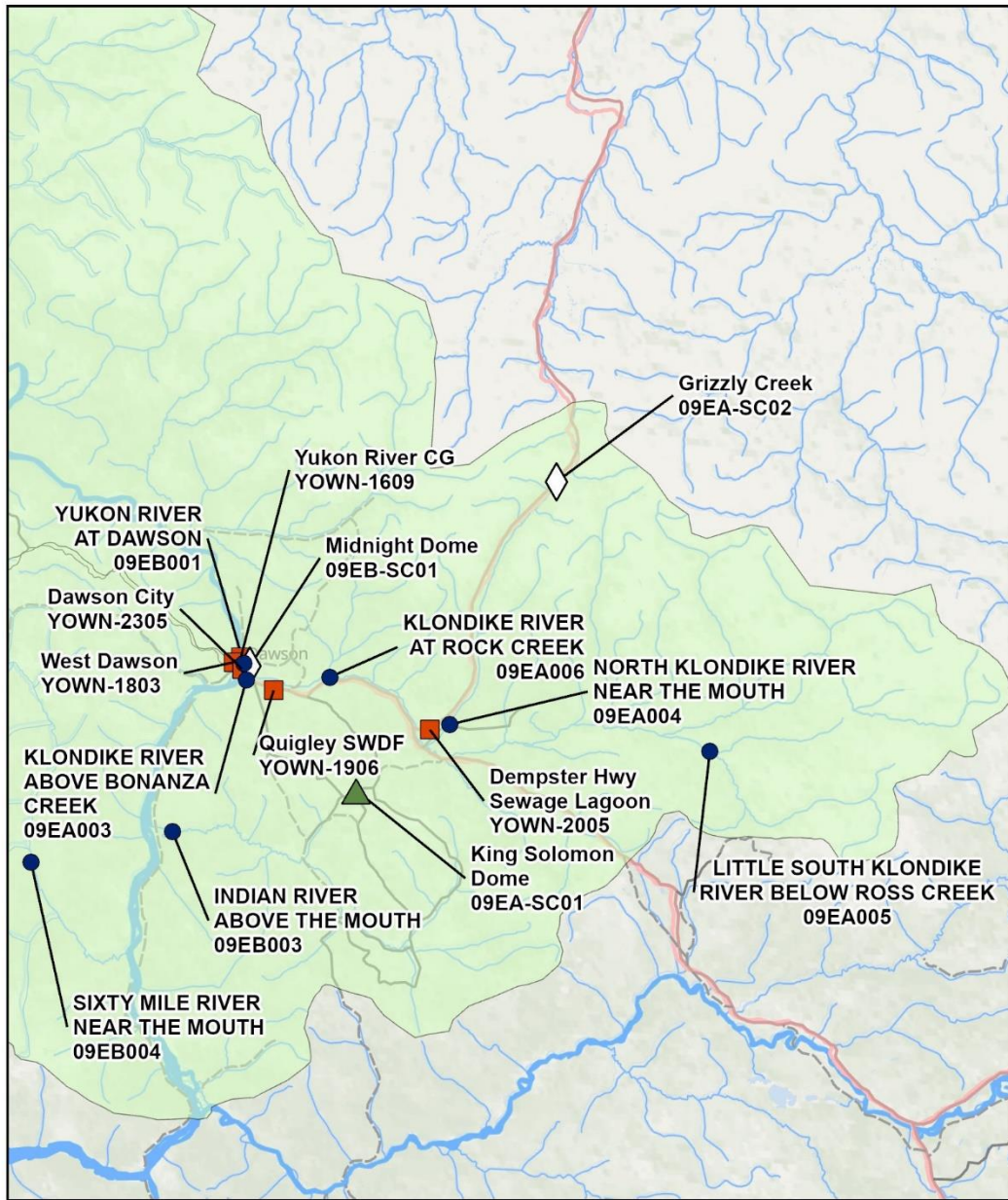
		WRB SnowMet Station WRB Snow Course WRB Hydrometric Station WSC Hydrometric Station WRB YOWN Station	<h2>White River</h2>
	Department of Environment Water Resources Branch 2024		

# Stewart River



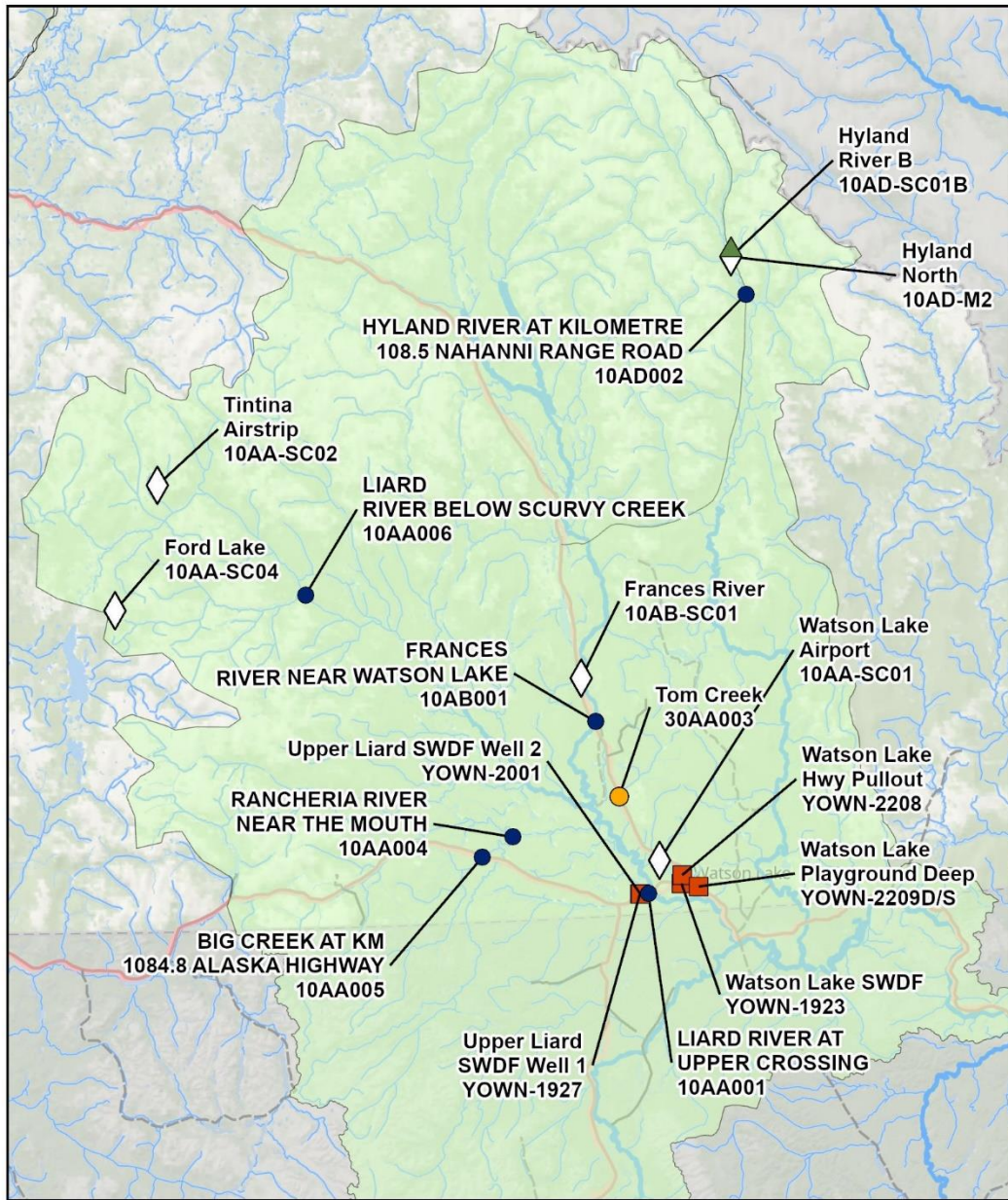
		WRB SnowMet Station WRB Snow Course WRB Hydrometric Station WSC Hydrometric Station WRB YOWN Station	<h2>Stewart River</h2>
	Department of Environment Water Resources Branch 2024		

# Lower Yukon River



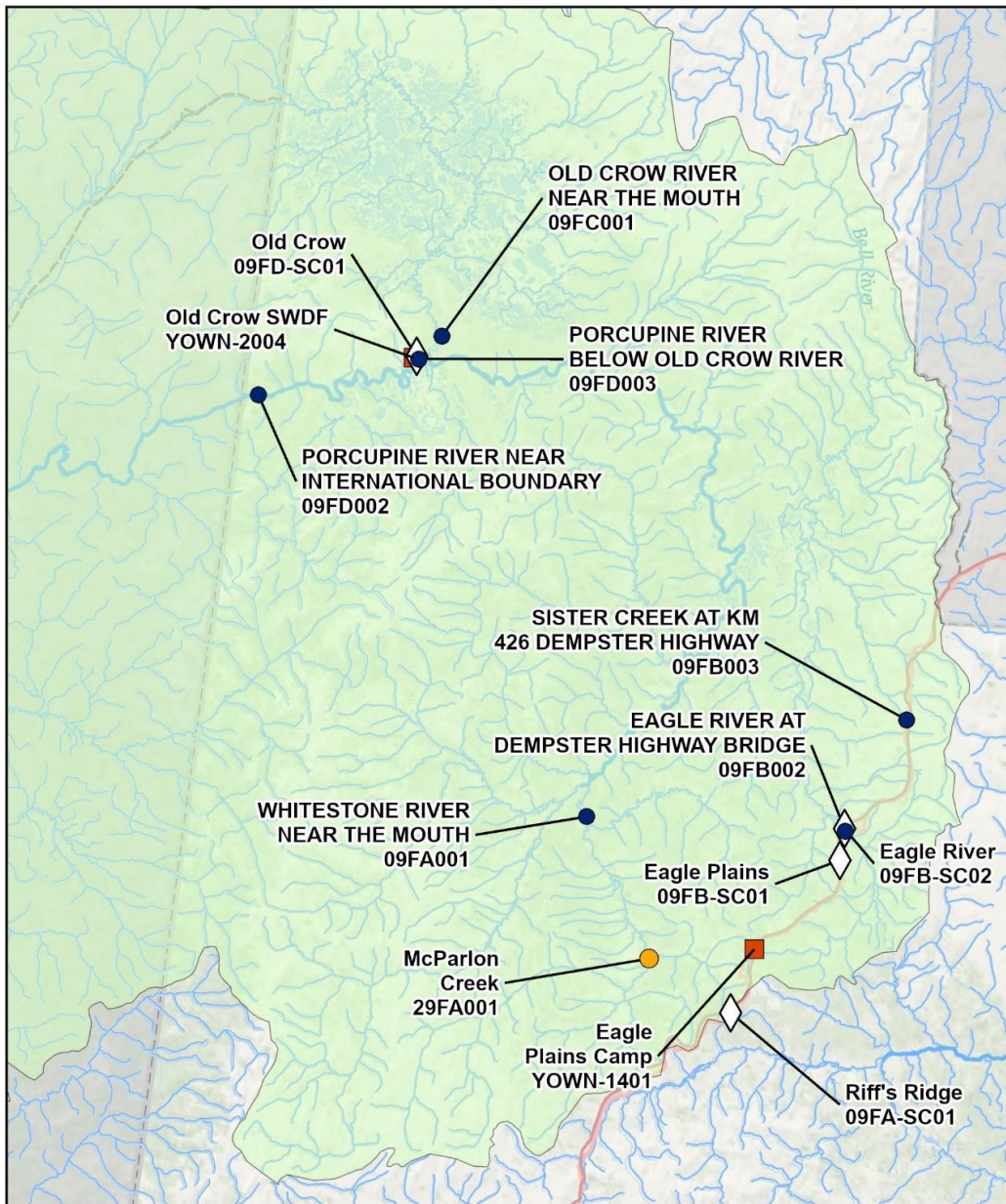
		<ul style="list-style-type: none"> <li> WRB SnowMet Station</li> <li> WRB Snow Course</li> <li> WRB Hydrometric Station</li> <li> WSC Hydrometric Station</li> <li> WRB YOWN Station</li> </ul>	<h2>Lower Yukon River</h2>
	Department of Environment Water Resources Branch 2024		

# Liard River



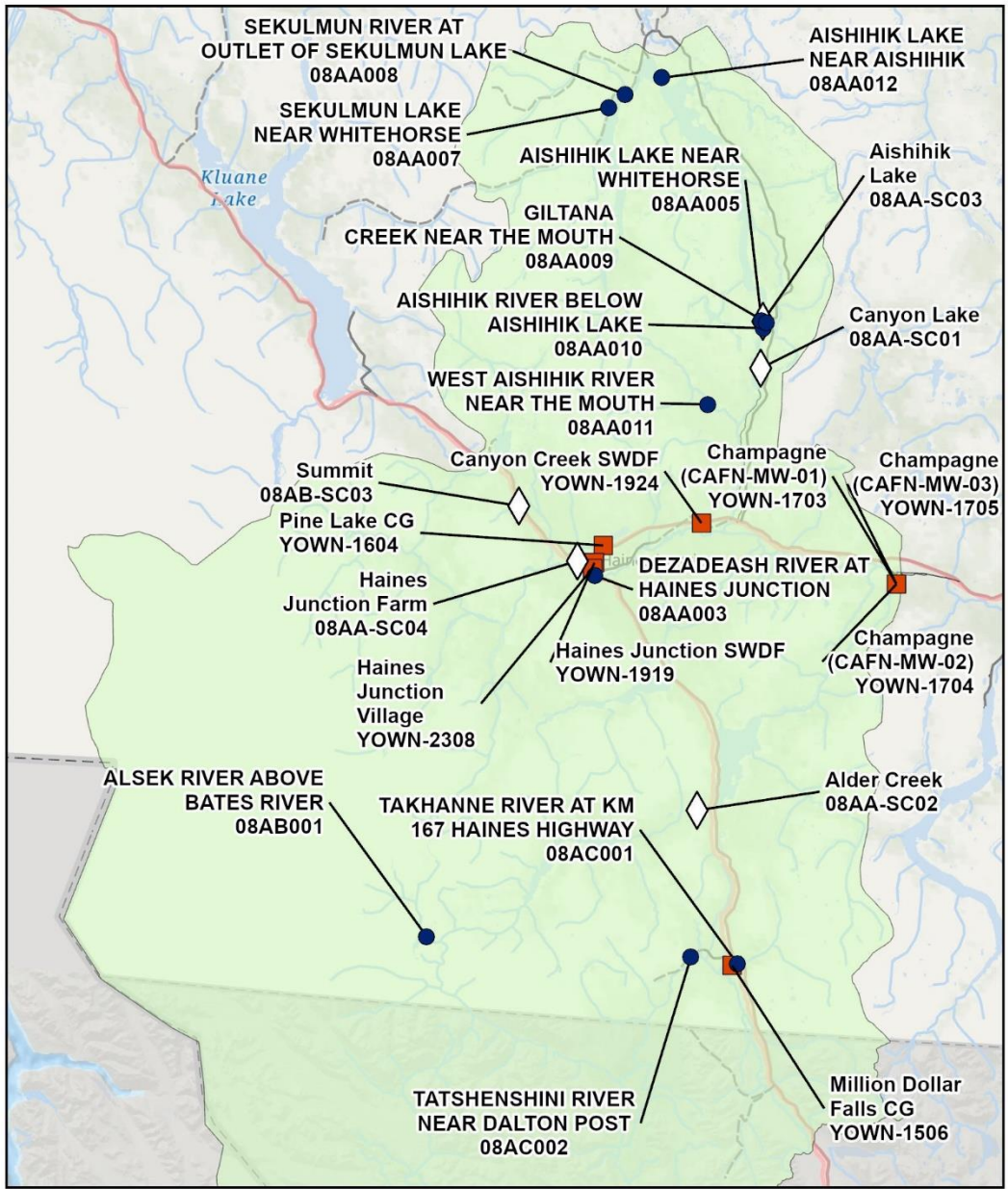
		WRB SnowMet Station WRB Snow Course WRB Hydrometric Station WSC Hydrometric Station WRB YOWN Station	<h2>Liard River</h2>
	Department of Environment Water Resources Branch 2024		

# Porcupine River



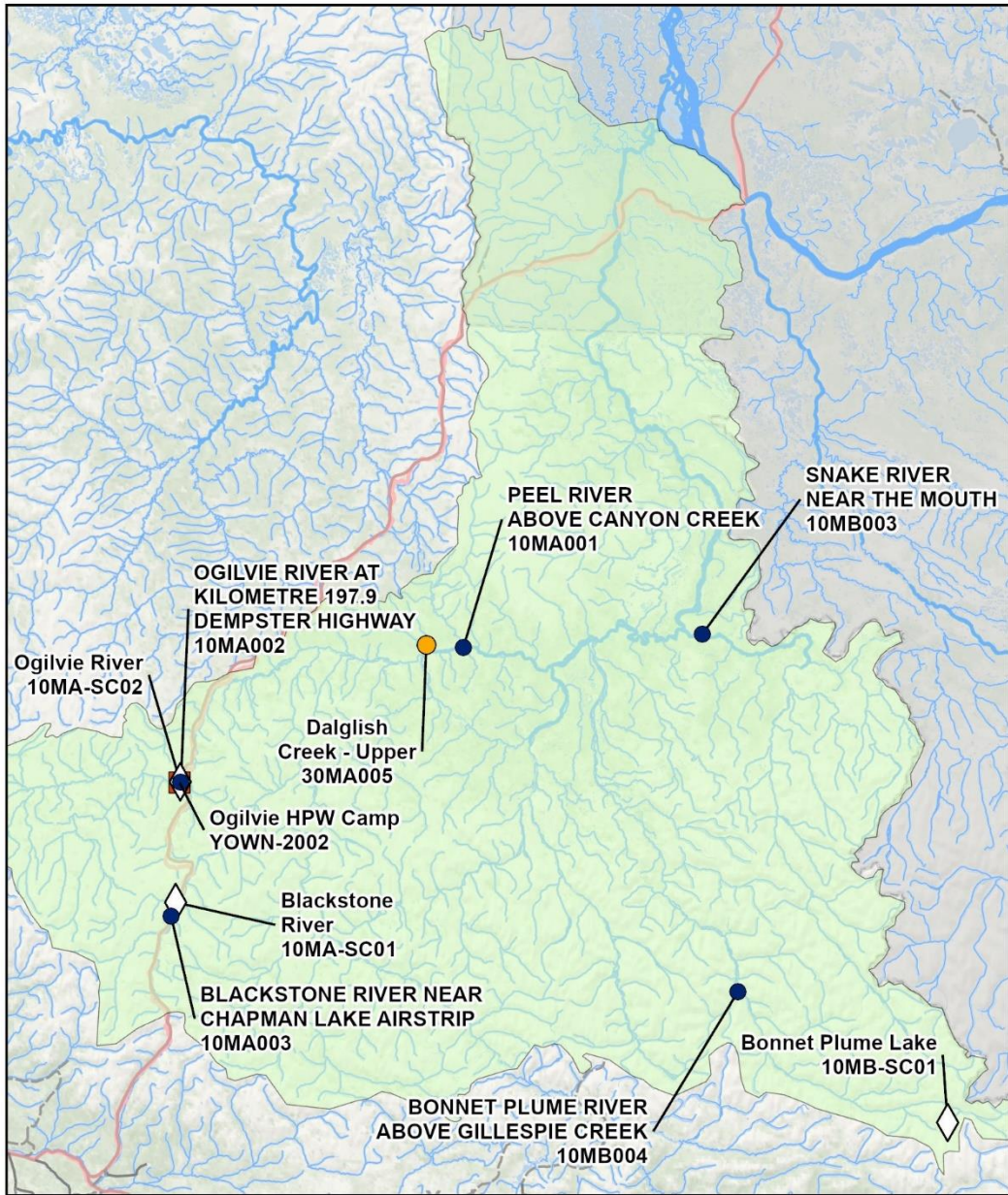
		<ul style="list-style-type: none"> <li> WRB SnowMet Station</li> <li> WRB Snow Course</li> <li> WRB Hydrometric Station</li> <li> WSC Hydrometric Station</li> <li> WRB YOWN Station</li> </ul>	<h2>Porcupine River</h2>
	Department of Environment Water Resources Branch 2024		

# Alsek River



		WRB SnowMet Station WRB Snow Course WRB Hydrometric Station WSC Hydrometric Station WRB YOWN Station	<h2>Alsek River</h2>
	Department of Environment Water Resources Branch 2024		

# Peel River



		WRB SnowMet Station WRB Snow Course WRB Hydrometric Station WSC Hydrometric Station WRB YOWN Station	<h2>Peel River</h2>
	Department of Environment Water Resources Branch 2024		