

INTRODUCTION
Briefest possible of northeast Stevenson Ridge area consists of metamorphosed and poly-deformed Precambrian basement overlain by relatively late-Mesozoic and Tertiary successions. In this generally unglaciated terrain (Dun-Robin, 1956)...

DESCRIPTIVE NOTES
The White River section (see map) contains of metamorphosed and poly-deformed Precambrian basement overlain and overlapped by relatively late-Mesozoic and Tertiary successions. In this generally unglaciated terrain (Dun-Robin, 1956)...

DESCRIPTIVE NOTES (continued)
The White River section (see map) contains of metamorphosed and poly-deformed Precambrian basement overlain and overlapped by relatively late-Mesozoic and Tertiary successions. In this generally unglaciated terrain (Dun-Robin, 1956)...

DESCRIPTIVE NOTES (continued)
The White River section (see map) contains of metamorphosed and poly-deformed Precambrian basement overlain and overlapped by relatively late-Mesozoic and Tertiary successions. In this generally unglaciated terrain (Dun-Robin, 1956)...

DESCRIPTIVE NOTES (continued)
The White River section (see map) contains of metamorphosed and poly-deformed Precambrian basement overlain and overlapped by relatively late-Mesozoic and Tertiary successions. In this generally unglaciated terrain (Dun-Robin, 1956)...

DESCRIPTIVE NOTES (continued)
The White River section (see map) contains of metamorphosed and poly-deformed Precambrian basement overlain and overlapped by relatively late-Mesozoic and Tertiary successions. In this generally unglaciated terrain (Dun-Robin, 1956)...

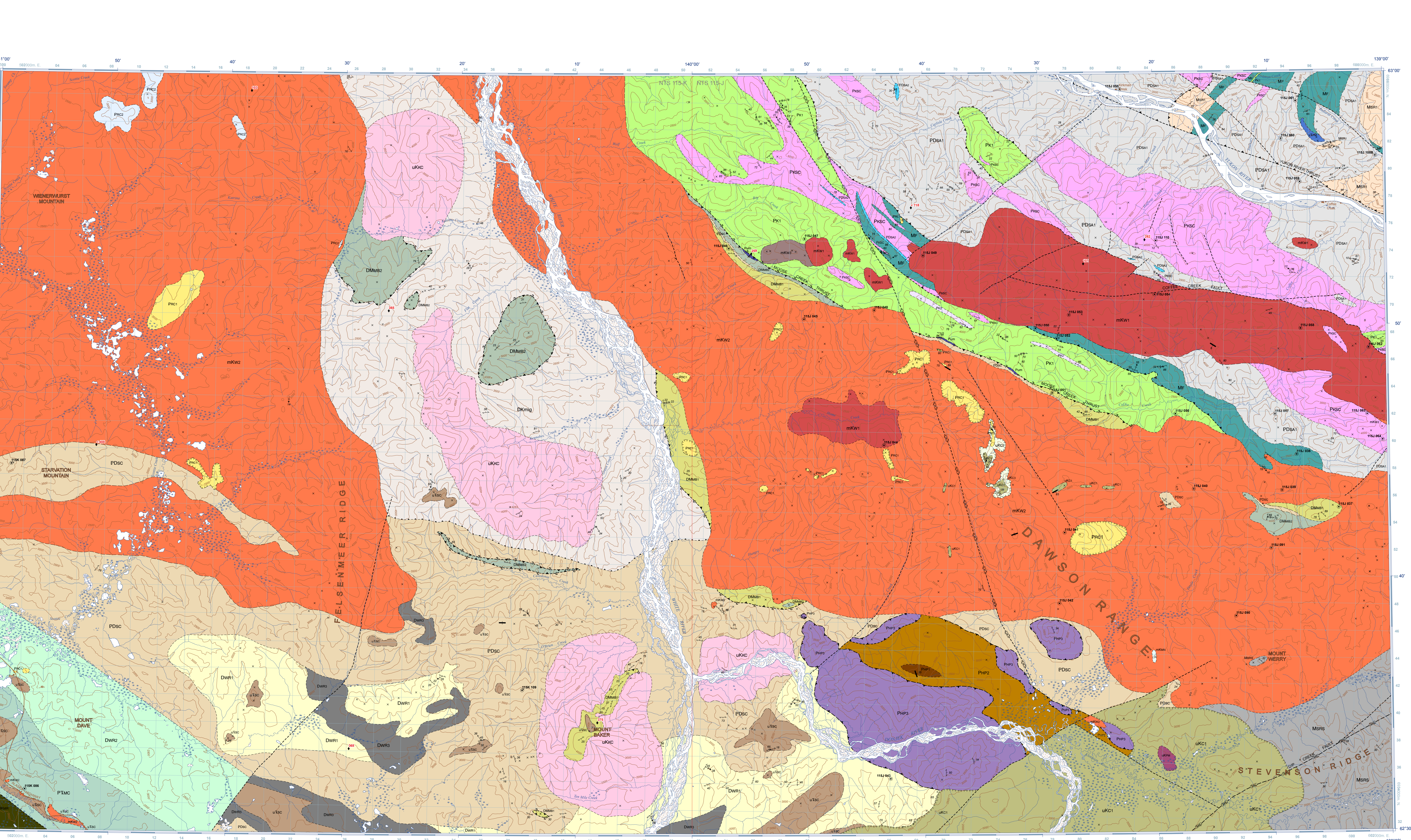
DESCRIPTIVE NOTES (continued)
The White River section (see map) contains of metamorphosed and poly-deformed Precambrian basement overlain and overlapped by relatively late-Mesozoic and Tertiary successions. In this generally unglaciated terrain (Dun-Robin, 1956)...

DESCRIPTIVE NOTES (continued)
The White River section (see map) contains of metamorphosed and poly-deformed Precambrian basement overlain and overlapped by relatively late-Mesozoic and Tertiary successions. In this generally unglaciated terrain (Dun-Robin, 1956)...

DESCRIPTIVE NOTES (continued)
The White River section (see map) contains of metamorphosed and poly-deformed Precambrian basement overlain and overlapped by relatively late-Mesozoic and Tertiary successions. In this generally unglaciated terrain (Dun-Robin, 1956)...

DESCRIPTIVE NOTES (continued)
The White River section (see map) contains of metamorphosed and poly-deformed Precambrian basement overlain and overlapped by relatively late-Mesozoic and Tertiary successions. In this generally unglaciated terrain (Dun-Robin, 1956)...

DESCRIPTIVE NOTES (continued)
The White River section (see map) contains of metamorphosed and poly-deformed Precambrian basement overlain and overlapped by relatively late-Mesozoic and Tertiary successions. In this generally unglaciated terrain (Dun-Robin, 1956)...



Legend and descriptive notes for geological units and features. Includes sections for Paleogene, Upper Cretaceous, Middle Cretaceous, Late Devonian-Early Mississippian, Permian, and Late Devonian and Older. Also includes a table of mineral occurrences.

References
Barnes, R.C., Ryan, J.J., Goffey, S.P. and Whitmore, M., 2007. Permian to Cretaceous paleogeographic evolution of the western Canadian Cordillera. Canadian Journal of Earth Sciences, 44(10), 1031-1047.