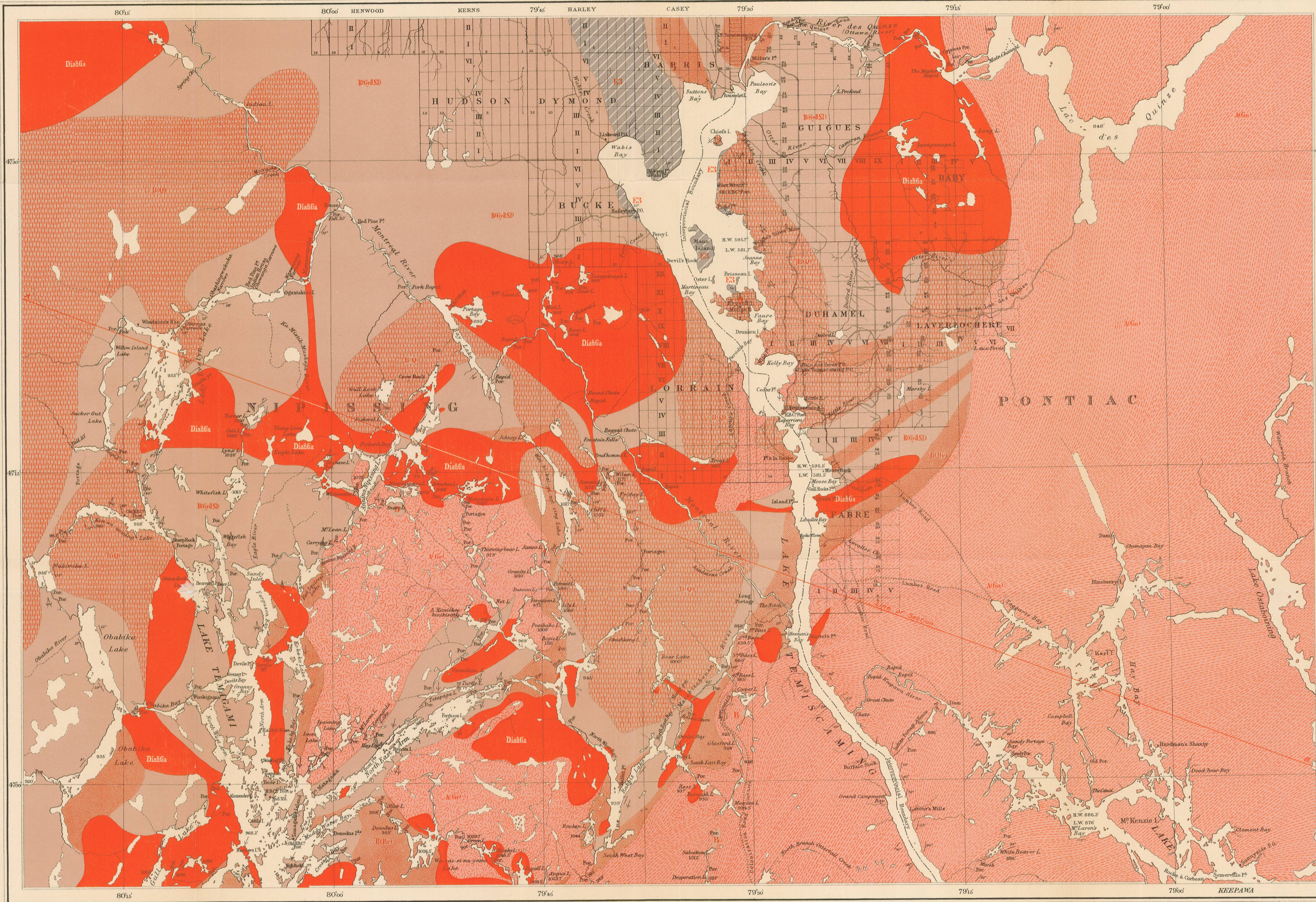


The Laurentian is composed of a series of massive or schistose, and usually evenly foliated, crystalline rocks, the latter being commonly referred to as 'gneisses'...

The breccia or breccia-conglomerate which lies at the base of the Huronian of this district, is the rock previously referred to and described by Logan and Murray as 'slate conglomerate' or 'chloritic slate conglomerate'...

The granite present in the area covered by this map-sheet, is a rock of rather uniform and somewhat coarse texture, composed essentially of orthoclase, quartz and biotite, the latter mineral being in most cases largely, if not entirely, altered to chlorite...

The large masses of diabase and gabbro so frequently exposed, are essentially identical in structure and composition to similar masses found in the Sudbury Mining District, with which they are practically continuous...



J. White, Chief Draughtsman
C.O. Senecal, Draughtsman

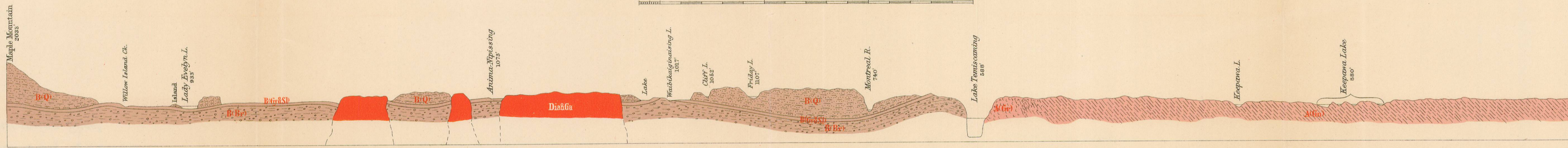
SOURCES OF INFORMATION
Surveys by A.E. Barlow 1892-94
Plans of surveys by Crown Lands Depts Ontario and Quebec

PROVINCES OF ONTARIO AND QUEBEC
Nipissing District Ont. and Pontiac County Que.
(Lake Temiscaming Sheet)

Natural Scale 223,400

Scale 4 miles to one inch

1 0 5 10 15 Miles



SECTION ON LINE A-B
Horizontal Scale 4 miles to one inch
Vertical Scale 2000 Ft. to one inch