

This Area Only

GEOLOGICAL & TOPOGRAPHICAL MAP
of a portion of
EAST KOOTENAY DISTRICT,
BRITISH COLUMBIA.

by
J.M. EVOY B.A.Sc.

Natural scale 25000
Scale 4 statute miles to 1 inch

Contour interval 500 feet.

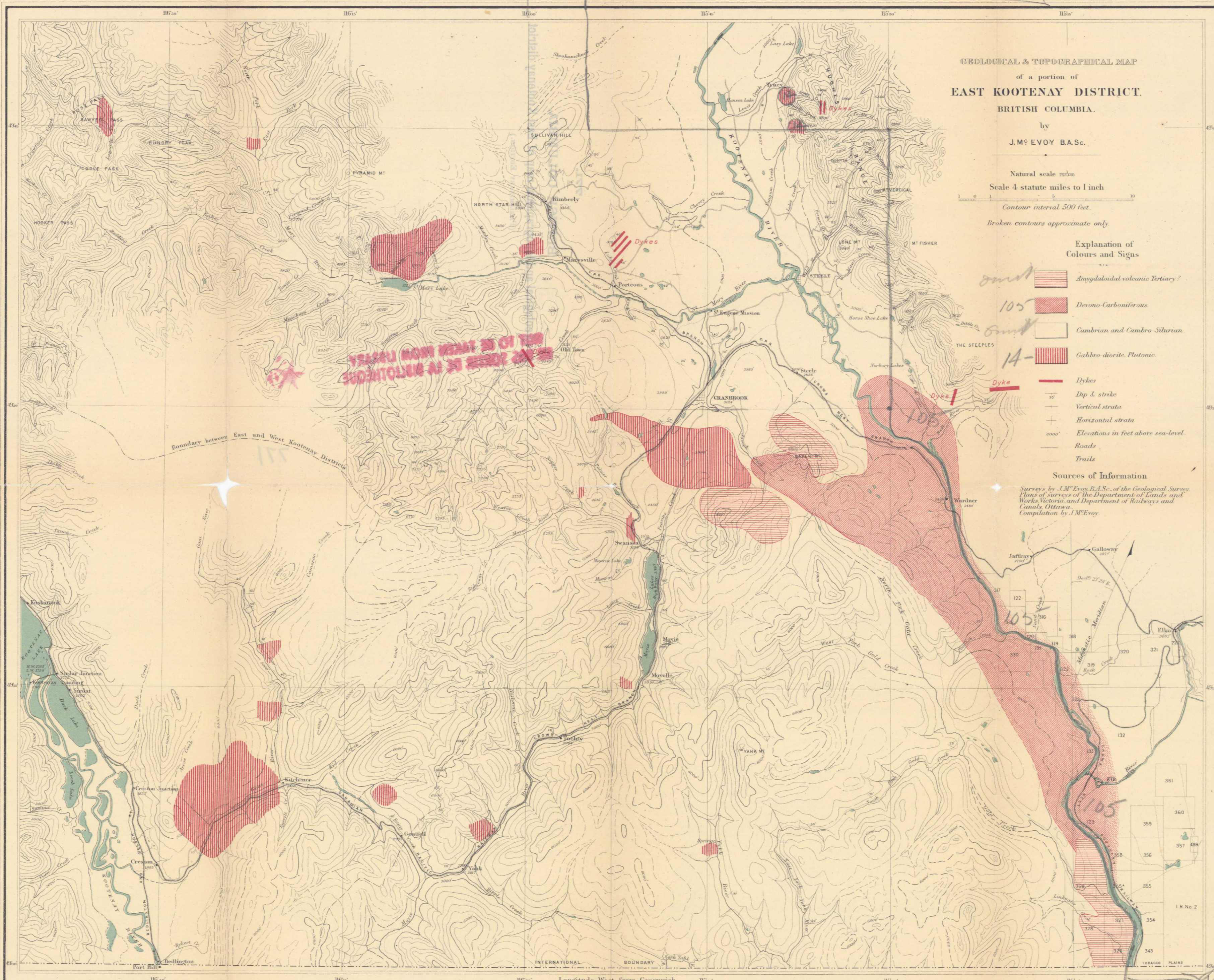
Broken contours approximate only.

Explanation of
Colours and Signs

- 105* Anyglacial volcanic Tertiary?
- 105* Devono-Carboniferous.
- 105* Cambrian and Cambro-Silurian.
- 14-* Gabbro-diorite. Plutonic.
- Dykes
- Dip & strike
- Vertical strata
- Horizontal strata
- Elevations in feet above sea-level.
- Roads
- Trails

Sources of Information

Surveys by J.M. Evoy, B.A.Sc. of the Geological Survey,
Plans of surveys of the Department of Lands and
Works Victoria, and Department of Railways and
Canals Ottawa.
Compilation by J.M. Evoy.



C.O. Senécal, Geographer and Chief Draughtsman

Reference Part A Annual Report Vol. XII

No. 771
Price 10 cts

Preliminary Edition

GEOLOGICAL SURVEY
OF CANADA

5.1.2 Kootenay east No. 771
At Geol.

*Removed from 20c
this area only 7/19/12
v. 12*

771