

Explanation of Colours and Signs

Unaltered Sedimentary Rocks

- Recent. M Alluvial gravels.
- Late Tertiary. L₂ Flag Creek Beds Gravel, silts, &c.
- Early Tertiary. (Kanan Series). L₁ Conglomerates, sandstone, clays, lignite, bearing beds, etc.

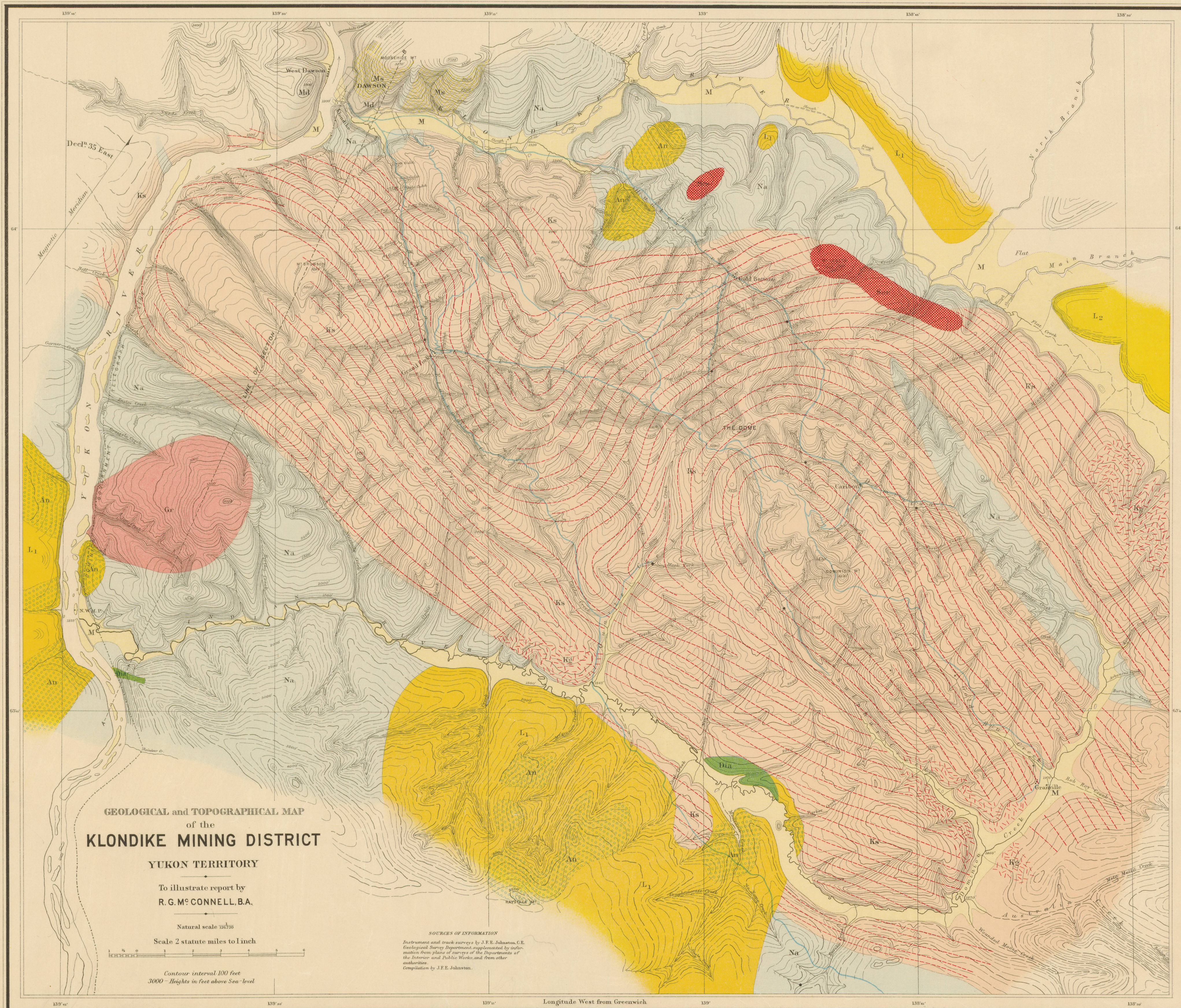
Older Schistose Rocks

- Blondike Series. Ks Deformed quartz porphyry and porphyries, etc.
- Blondike Series. Kg Deformed granite porphyry (Daly's quartzites).
- Moosehide Group. Md Altered Diabase.
- Moosehide Group. Ms Serpentine (diabase).
- Nasina Series (Clastic). Na Quartz-mica schists, quartzite and limestone.

Igneous Rocks (massive)

- Gr Granite.
- Sp Serpentine (peridotite).
- Dia Diabase.
- An Andesite, rhyolite, etc.
- S Strike and dip.
- R Roads.
- G Gold discovery points.

1200' Altitudes in feet above sea level



GEOLOGICAL and TOPOGRAPHICAL MAP
of the
KLONDIKE MINING DISTRICT

YUKON TERRITORY
To illustrate report by
R. G. M^cCONNELL, B.A.

Natural scale 1:250,000
Scale 2 statute miles to 1 inch
Contour interval 100 feet
3000' - Heights in feet above Sea-level

SOURCES OF INFORMATION
Instrument and track surveys by J. F. E. Johnston, C.E.
Geological Survey Department, supplemented by information from plans of surveys of the Departments of the Interior and Public Works, and from other authorities.
Compilation by J. F. E. Johnston.

C. O. Senécal, B.A.Sc., Geographer and Chief Draughtsman

To Accompany Part B, Annual Report Vol. XIV.

This document was produced by scanning the original publication.
Ce document est le produit d'une numérisation par balayage de la publication originale.