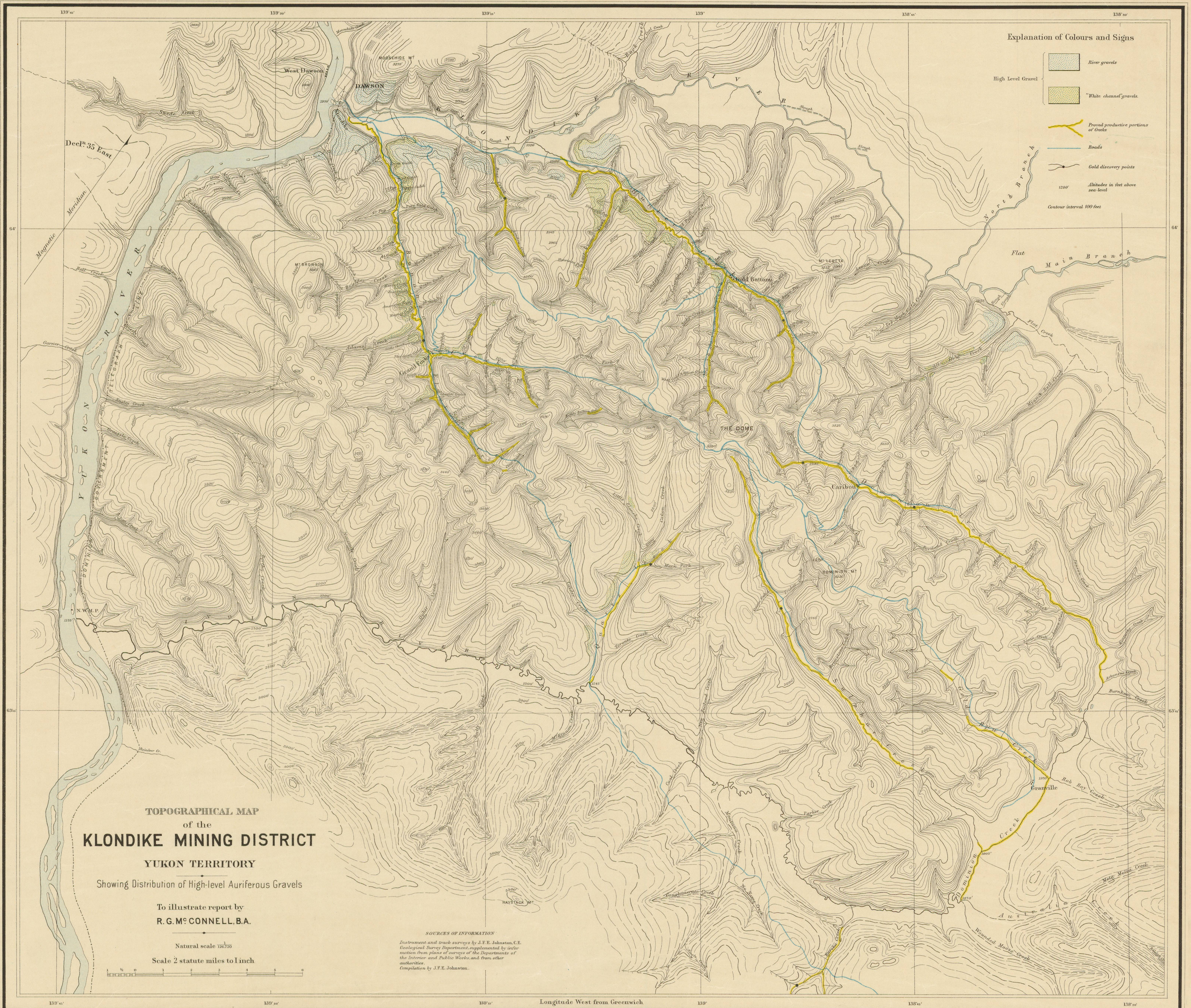


Geological Survey of Canada

ROBERT BELL, Sc.D., (Canada) LL.D., M.D., F.R.S., I.S.O. ACTING DIRECTOR.
1905



Explanation of Colours and Signs

- River gravels
- High Level Gravel
- "White channel" gravels
- Proved productive portions of creeks
- Roads
- Gold discovery points
- Altitudes in feet above sea-level
- 1200'
- Contour interval 100 feet

TOPOGRAPHICAL MAP
of the
KLONDIKE MINING DISTRICT
YUKON TERRITORY

Showing Distribution of High-level Auriferous Gravels

To illustrate report by
R. G. M. CONNELL, B.A.

Natural scale 1:62,500
Scale 2 statute miles to 1 inch

SOURCES OF INFORMATION
Instrument and track surveys by J.F.E. Johnston, C.E.
Geological Survey Department, supplemented by information from plans of surveys of the Departments of the Interior and Public Works, and from other authorities.
Compilation by J.F.E. Johnston.

C. O. Scamell, B.A.Sc., Geographer and Chief Draughtsman

To accompany Part B, Annual Report Vol. XIV.

Nº 886
Price 10 cts.

This document was produced by scanning the original publication.
Ce document est le produit d'une numérisation par balayage de la publication originale.