

Geological Survey Department,  
Canada.

HONOURABLE THOMAS MAYNE DALY, MINISTER.  
ALFRED R. C. SELWYN, C.M.G., LL.D., F.R.S., B.C., DIRECTOR.

1893.

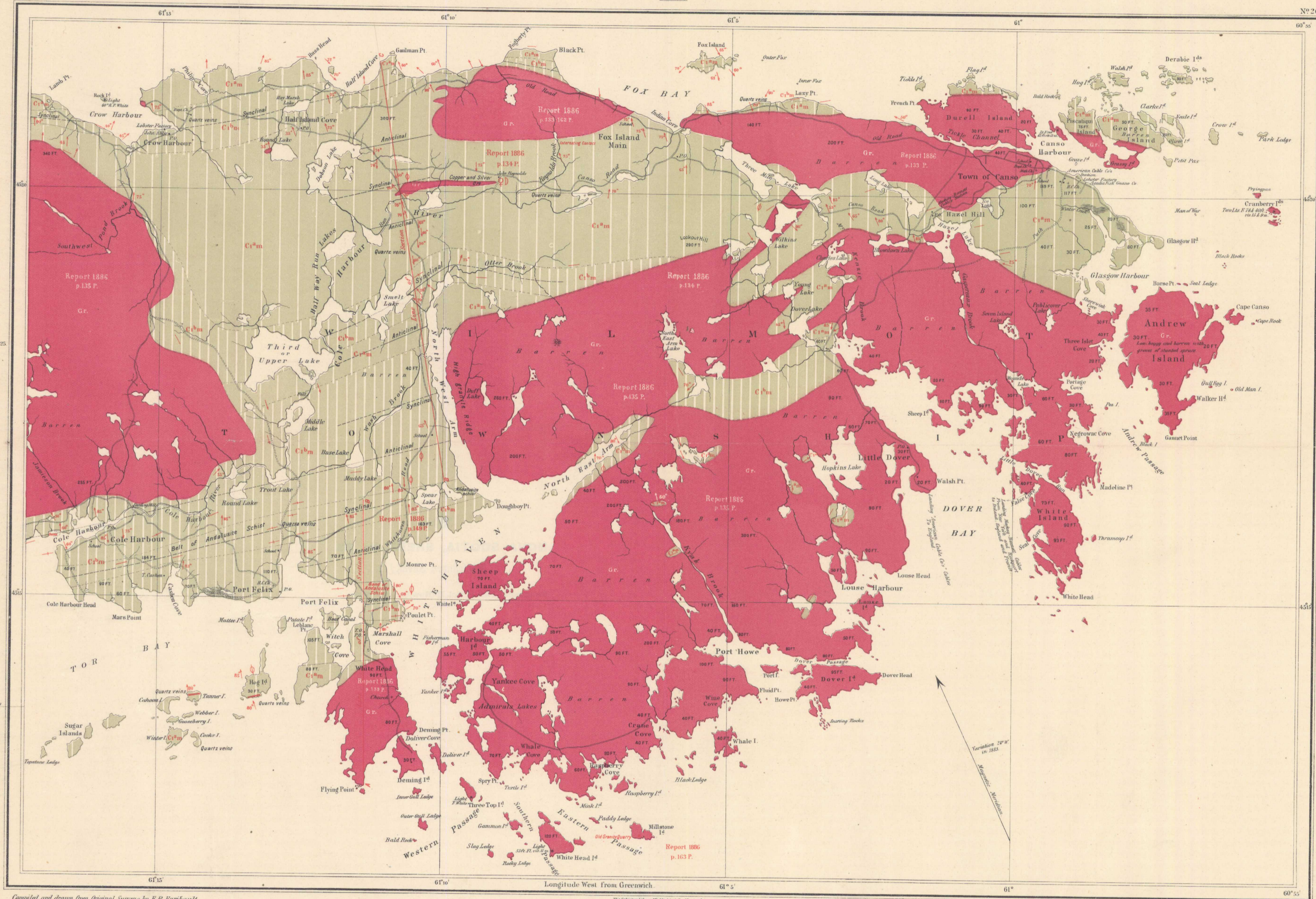
Sheet

No. 26.

Legend.

- C<sup>1</sup>m Lower Cambrian (Metamorphic Slate Group)
- C<sup>2</sup>m Lower Cambrian (Metamorphic Quartzite Group)
- G.r. Granite

- Geological boundaries.
- Quartz Veins.
  - Dips.  Strikes.  Glacial Striae.
  - Copper.  Argentiferous Galena.
  - Granite Quarry.



Compiled and drawn from Original Surveys by E. R. Fairbairn.  
The Coast Line from the Admiralty Charts.

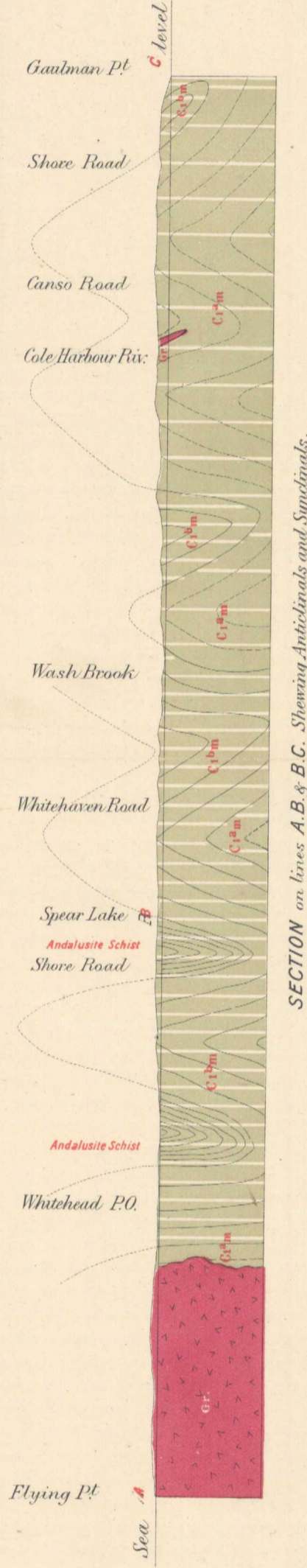
The Dominion Lithographing Co. Montreal.

PROVINCE OF NOVA SCOTIA,  
(Queensborough County).

Natural Scale  $\frac{1}{62,500}$ .  
Scale 1 mile to one inch.

WHITEHAVEN SHEET  
Map No. 380

To Illustrate Report by Messrs. Hugh Fletcher and E. R. Fairbairn,  
Part I. Annual Report, Vol. II, 1886.



SECTION on lines A.B. & B.C. Showing Anticlinals and Synclinals,  
Horizontal and Vertical Scales—1 mile to one inch.

NOT TO BE TAKEN FROM LIBRARY  
NE PAS SORTIR DE LA BIBLIOTHÈQUE



380

Whitehaven sheet  
S.I.G.  
Geol.