

Geological Survey Department,  
Canada

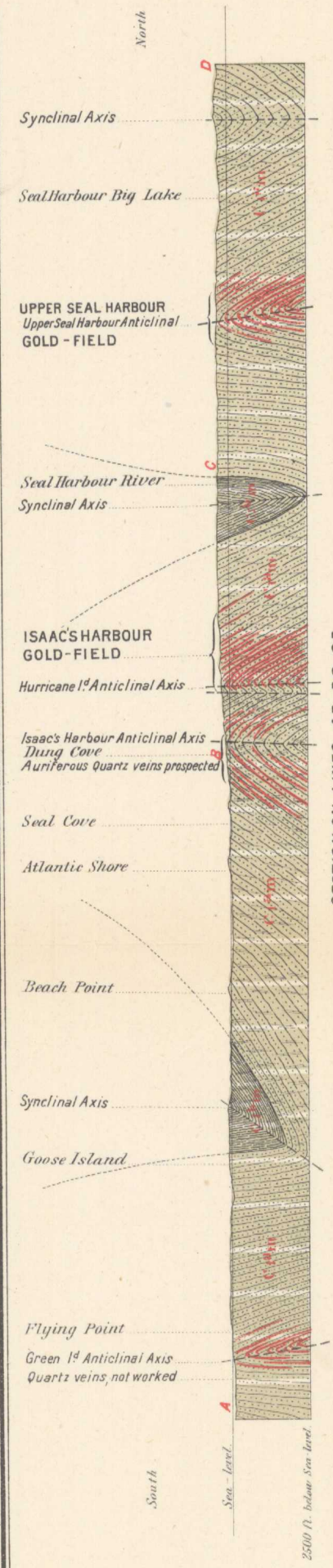
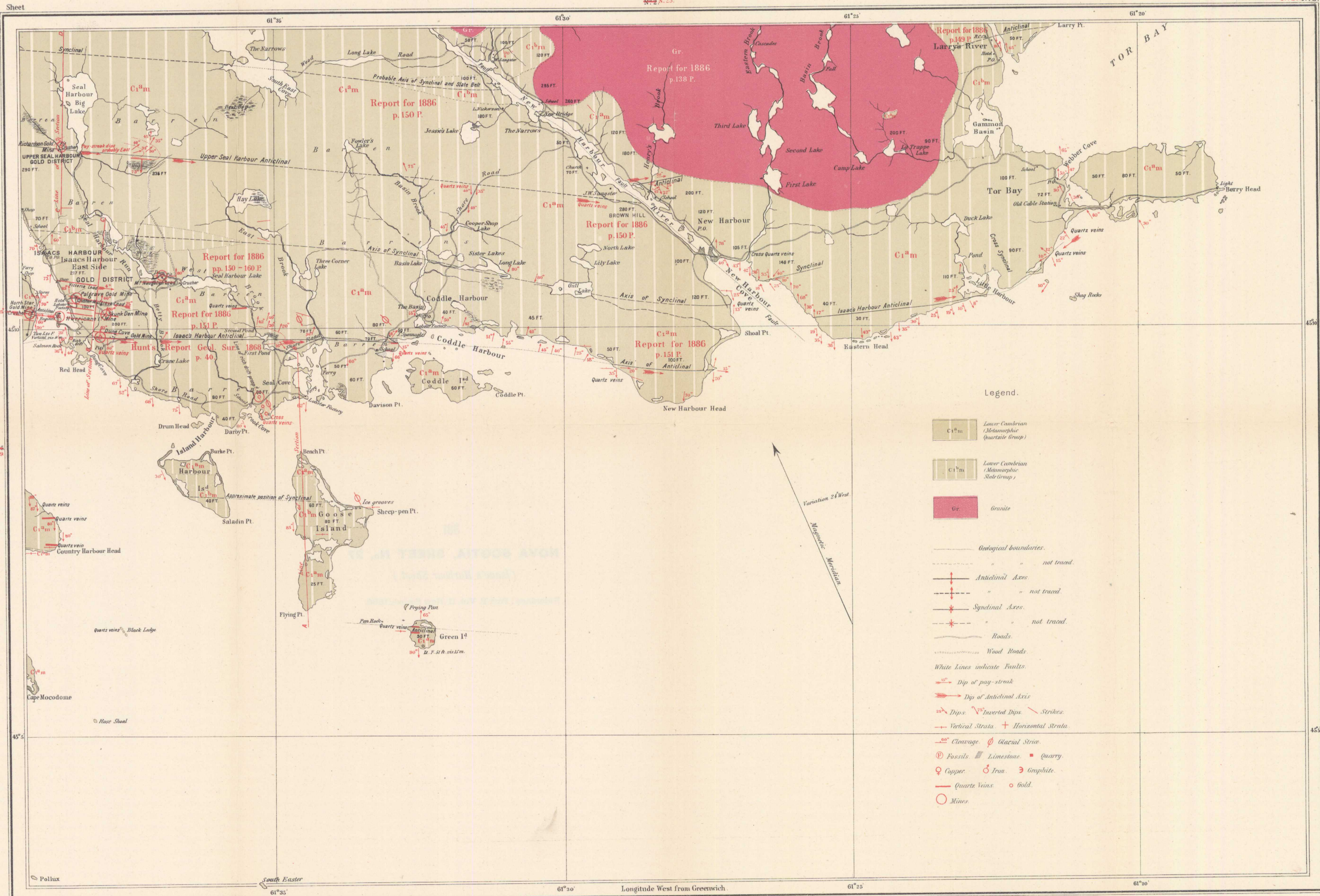
HONOURABLE THOMAS MAYNE DALY, MINISTER.

ALFRED R. C. SELWYN, C.M.G., LL.D., F.R.S. &c., DIRECTOR.

1893.

No. 275.

No. 27, No. 9.



SECTION ON LINES AB, BC, CD.  
Horizontal and vertical scales - 1 mile to one inch.  
Red lines indicate Quartz Veins.

MAP LIBRARY / CARTOTHEQUE

Compiled and drawn from Original Surveys by E. R. Fairbairn.  
The Coast Line from the Admiralty Charts.

PROVINCE OF NOVA SCOTIA,  
(Guysborough County)

Natural Scale 1/62,500  
Scale 1 mile to one inch.

To Illustrate Report by Messrs. Hugh Fletcher and E. R. Fairbairn,  
Part I Annual Report, Vol. II, 1886.

NOT TO BE TAKEN FROM LIBRARY  
NE PAS SORTIR DE LA BIBLIOTHÈQUE



381