

Geological Survey Department,
Canada.

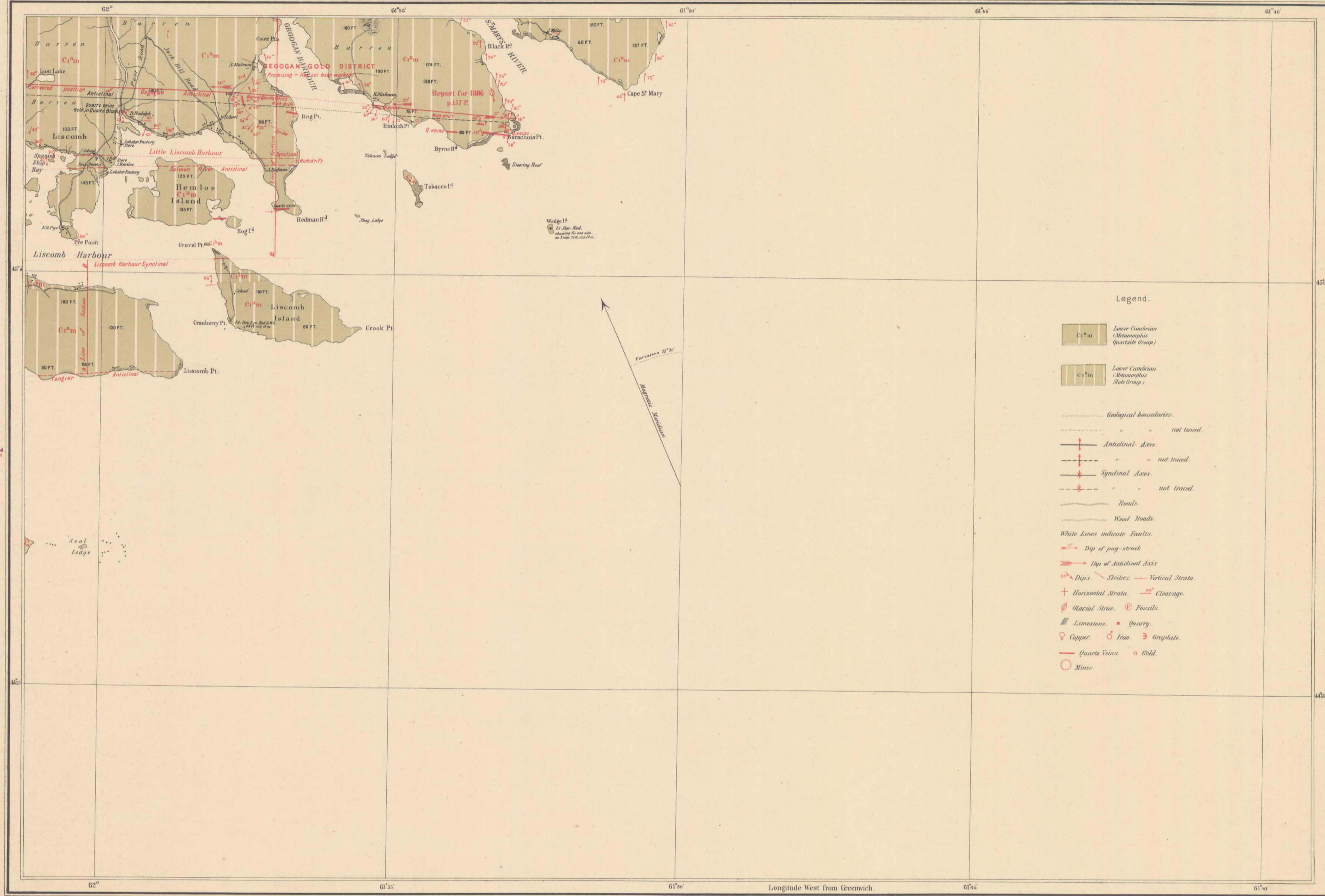
HONOURABLE THOMAS MAYNE DALY, MINISTER.

ALFRED R.C. SELWYN, C.M.G., LL.D., F.R.S. &c. DIRECTOR.

1893.

N° 28. 104.

Sheet



Legend.

C1^m Lower Cambrian (Metamorphic Quartzite Group)

C1^{pm} Lower Cambrian (Metamorphic Slate Group)

Geological boundaries.

Anticlinal Axes not traced.

Synclinal Axes not traced.

Roads.

Wood Roads.

White Lines indicate Faults.

Dip of pay-streak.

Dip of Anticlinal Axis.

Dips. Strikes. Vertical Strata.

Horizontal Strata. Cloavage.

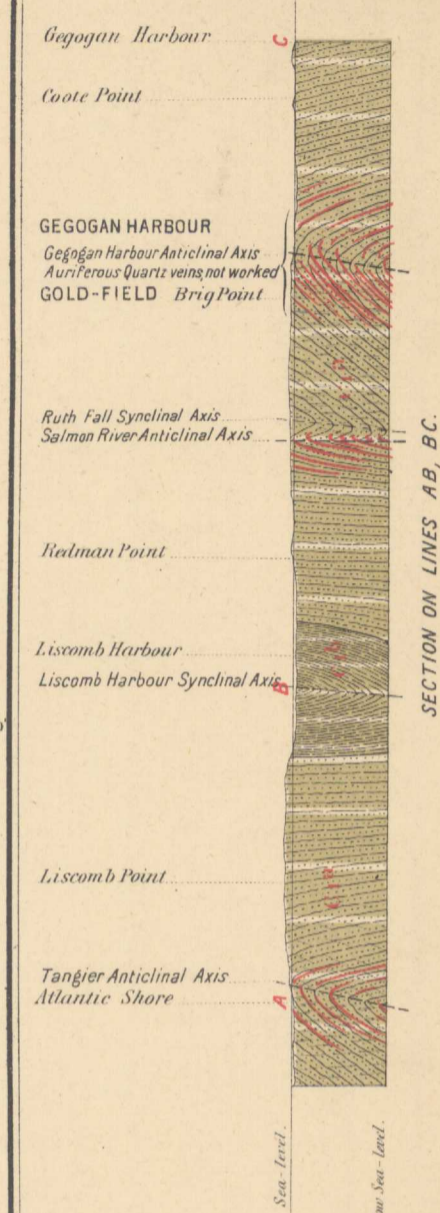
Glacial Stria. Fossils.

Limestone. Quarry.

Copper. Iron. Graphite.

Quartz Veins. Gold.

Mines.



SECTION ON LINES AB, BC.
Horizontal and Vertical Scales - Inset to one inch.
Red lines indicate Quartz Veins.

Compiled and drawn from Original Surveys by E.R. Fairbault.
The Coast Line from the Admiralty Charts.

The Stationer Litho and Publishing Co. Montreal.

PROVINCE OF NOVA SCOTIA,
(GUYSBOROUGH COUNTY)

Natural Scale 63,360

Scale 1 mile to one inch.

Gogogan sheet

To Illustrate Report by Messrs. Hugh Fletcher and E. R. Fairbault,
Dip of Annual Report, Vol. II, 1889.

NOT TO BE TAKEN FROM LIBRARY
NE PAS SORTIR DE LA BIBLIOTHEQUE

382

