

Geological Survey Department,
Canada

HONOURABLE THOMAS MAYNE DALY, MINISTER.

ALFRED R. C. SELWYN, C.M.G., LL.D., F.R.S., &c., DIRECTOR

1893.

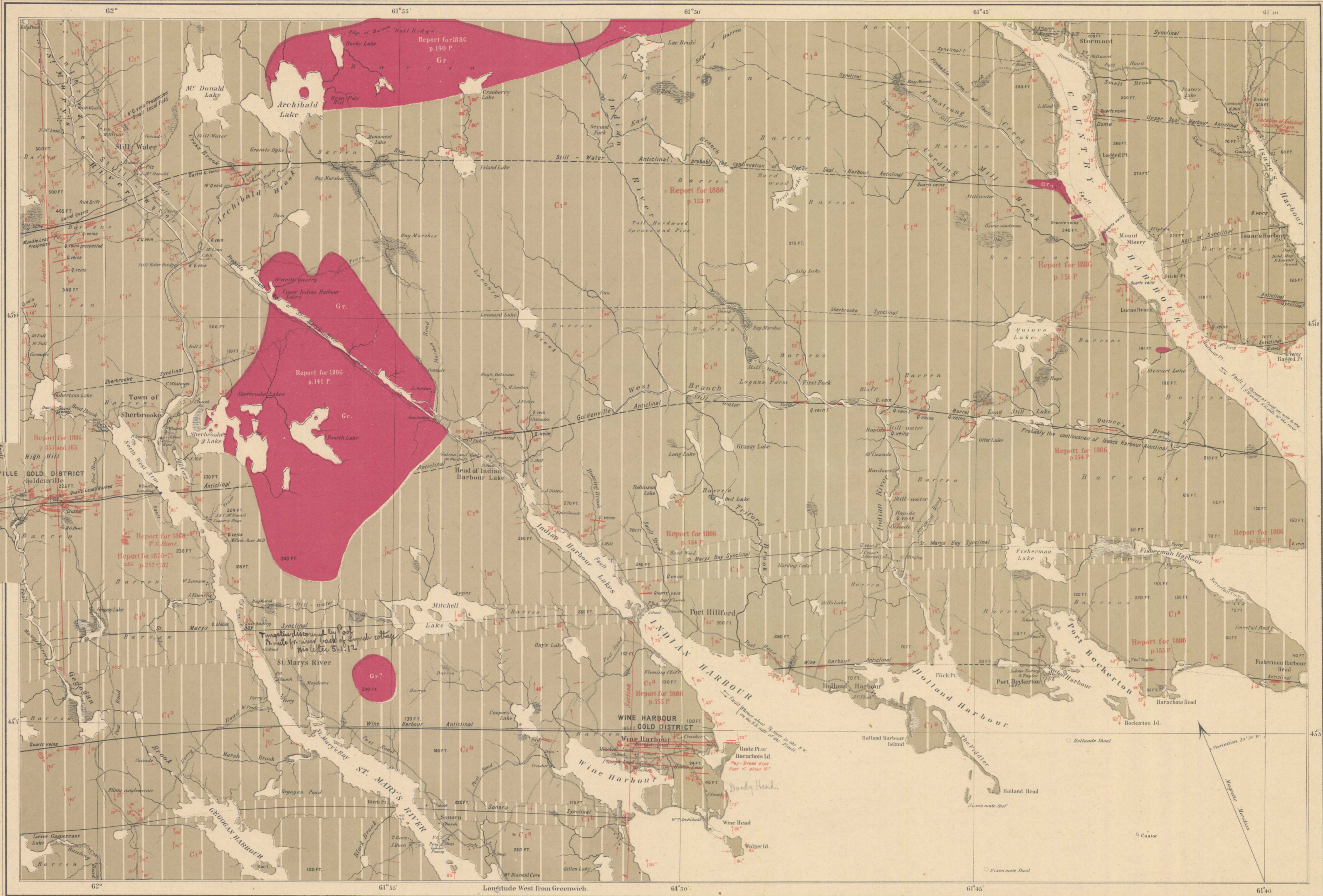
N° 30

Sheet

N° 29.

Legend.

- C1^b Lower Cambrian (Gneissic and Ferruginous State Group) Gold-bearing Series.
- C1^a Lower Cambrian (Quartzite Group) Gold-bearing Series.
- Gr. Granite
- Geological boundaries: not traced.
- Anticlinal Axes: not traced.
- Synclinal Axes: not traced.
- Roads: Wood Roads.
- White lines indicate Faults.
- Dip of pay-streak.
- Dip of Anticlinal Axis.
- Dips: ∇ Inverted Dips. ∇ Strikes.
- Vertical Strata + Horizontal Strata.
- Cleavage ∇ Glacial Striae.
- Quarry \square Iron \circ .
- Quartz Veins \circ Gold \circ Mines \circ .



Compiled and drawn from Original Surveys by E. R. Fairbairn.
The Coast Line from the Admiralty Charts.

N° 28.
The Subscription and Publishing Co. Montreal.
PROVINCE OF NOVA SCOTIA,
(Guysborough County)

Natural Scale 43,560.
Scale 1 mile to one inch.

Sherbrooke sheet

To Illustrate Report by Messrs. Hugh Fletcher and E. R. Fairbairn,
Part P Annual Report, Vol. 11, 1886.

383

NOT TO BE TAKEN FROM LIBRARY
NE PAS SORTIR DE LA BIBLIOTHEQUE

St. Mary's River
Fault
Crooked Brook Undulation
Stillwater Anticlinal Axis
Auriferous Quartz veins prospected
Sherbrooke Synclinal Axis
Robertson Lake
GOLDENVILLE GOLD-FIELD
Goldenville Anticlinal Axis
St. Mary's Bay Synclinal Axis
Gegogon Brook
Indian Harbour
Wine Harbour Anticlinal Axis
WINE HARBOUR GOLD-FIELD
Wine Harbour
Sonora Synclinal Axis
Gillen Lake

220072 Indian Ven Level