

Geological Survey Department,  
Canada.

HONOURABLE THOMAS MAYNE DALY, MINISTER.

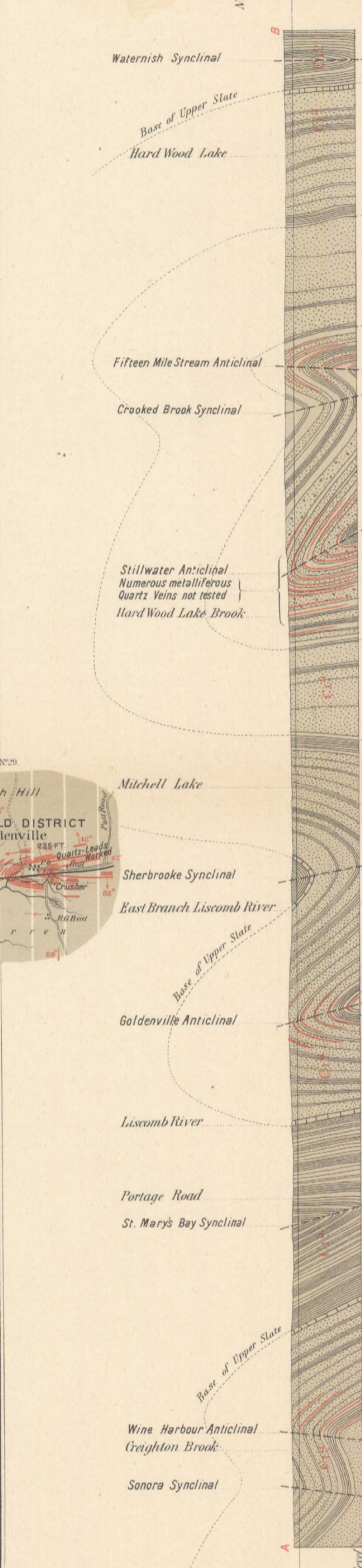
GEORGE M. DAWSON, C.M.G., LL.D., F.R.S. &c., DIRECTOR.

1895.

Sheet

Nº 37.

- Legend.**
- C<sub>1</sub><sup>a</sup> Lower Cambrian (Gouphite and Ferruginous State Group) Gold Bearing Series.
  - C<sub>1</sub><sup>b</sup> Lower Cambrian (Quartzite Group) Gold Bearing Series.
  - Geological boundaries:
    - not traced
    - Anticlinal Axes
    - Synclinal Axes
    - Roads
    - Wood Roads
    - White Lines indicate Faults
    - Dip of pay-streak
    - Dip of Anticlinal Axis
    - Dips. --- Inverted Dips --- Strikes
    - Vertical Strata --- Horizontal Strata
    - Cleavage --- Glacial Striae
    - Quarry --- Iron --- Mines
    - Quartz Veins --- Gold --- Mines



Compiled and drawn from Original Surveys by E. R. Fairbairn.  
Coast Line from the Admiralty Charts.

The Subscription List and Publishing Co Montreal.

PROVINCE OF NOVA SCOTIA,  
(Guysborough and Halifax Counties)

Natural Scale 63,360 ft.  
Scale 1 mile to one inch.

Geology by E. R. Fairbairn  
Part P. Annual Report, Vol. II, 1896.

550



NOT TO BE TAKEN FROM LIBRARY  
NE PAS SORTIR DE LA BIBLIOTHÈQUE

530