

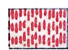



LEGEND.


Keewatin (Huronian?)

 *Altered trapps, hornblende schists and other green schists.*


 *Conglomerates.*

 *Altered quartz porphyries felsite schists, sericite schists, with some little altered felspathic ash beds or gray-wackes.*

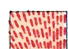
 *Fragmantal rocks, gray-wackes, volcanic tufts and agglomerates.*

 *Soft glossy grey schists and slates.*

 *Gabbro.*


 *Serpentine.*

Coutchiching.

 *Mica schist and fine grained grey evenly foliated gneiss or felspathic mica schist.*


Laurentian.

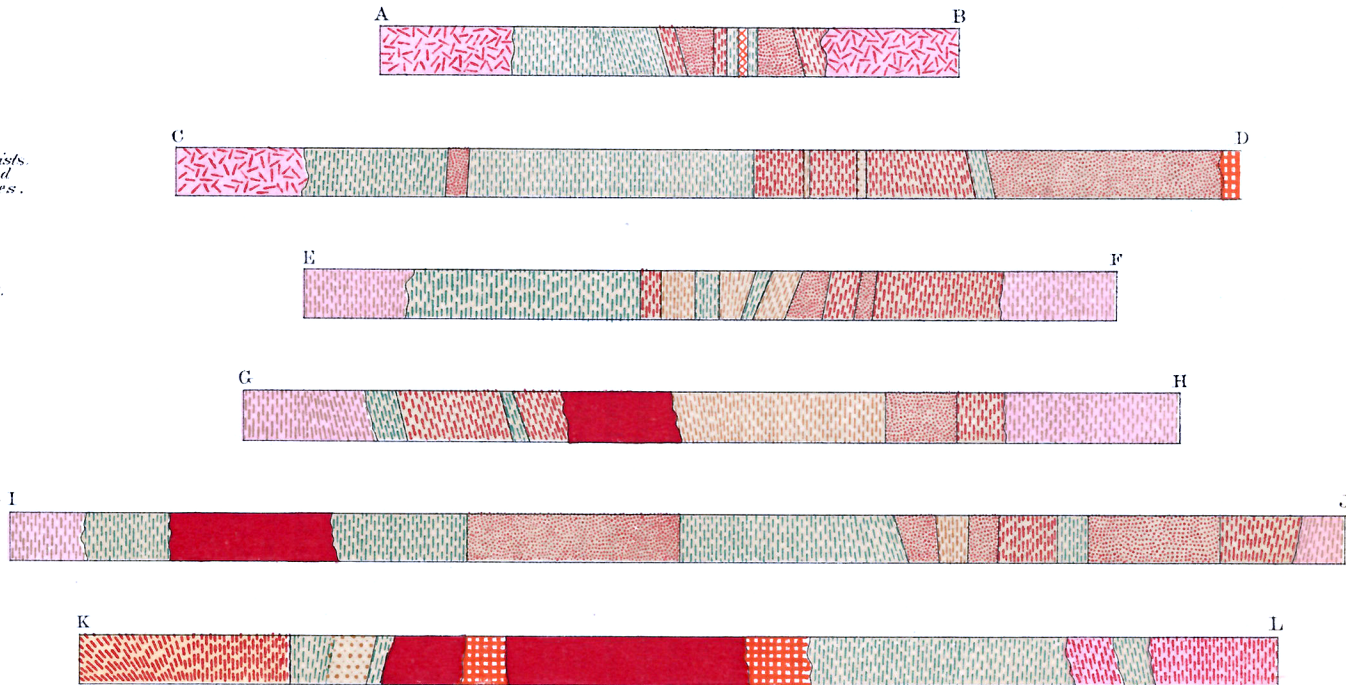
 *Hornblende syenite and hornblende-granite gneiss.*

 *Biotite granite gneiss (granitoid)*

 *Biotite granite gneiss (evenly foliated)*

 *Granite.*

 *Post Archean diabase.*



*Diagrammatic sections across Keewatin trough along the lines indicated on the accompanying map. Scale: 1/2 inch to 1 mile.*