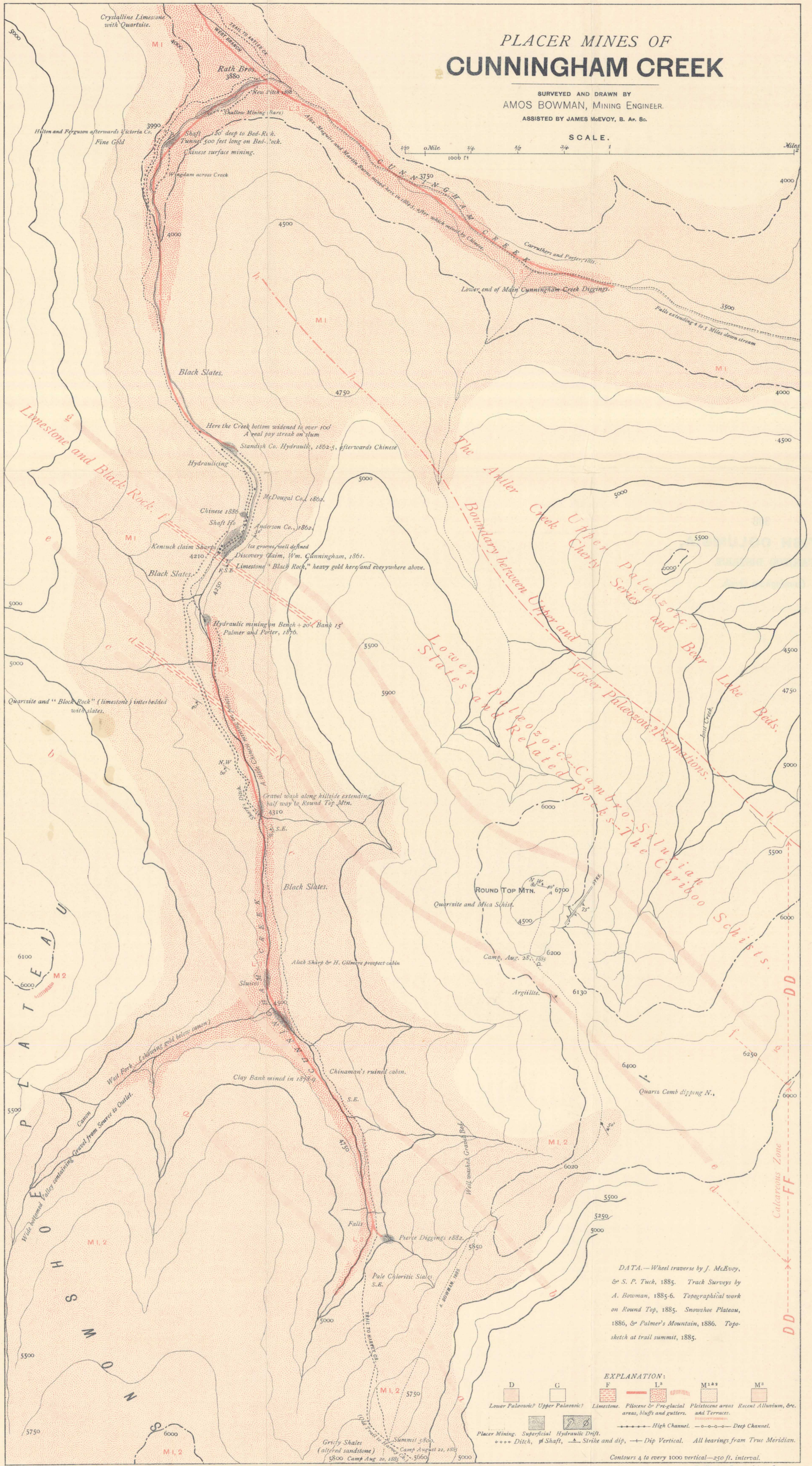


# PLACER MINES OF CUNNINGHAM CREEK

SURVEYED AND DRAWN BY  
AMOS BOWMAN, MINING ENGINEER.  
ASSISTED BY JAMES McEVY, B. A., B.S.

SCALE.

1/4 1/2 3/4 1 Miles



DATA.—Wheel traverse by J. McEvoy, & S. P. Tuck, 1885. Track surveys by A. Bowman, 1885-6. Topographical work on Round Top, 1885. Snowshoe Plateau, 1886, & Palmer's Mountain, 1886. Topographic sketch at trail summit, 1885.

EXPLANATION:	
D	Lower Palaeozoic? Upper Palaeozoic?
G	Limestone. Placense & Pre-glacial.
F	Placense & Pre-glacial. Placense areas, bluffs and gutters, and Terraces.
I	Placense & Pre-glacial. Placense areas, bluffs and gutters, and Terraces.
M1	Placense & Pre-glacial. Placense areas, bluffs and gutters, and Terraces.
M2	Placense & Pre-glacial. Placense areas, bluffs and gutters, and Terraces.
M3	Placense & Pre-glacial. Placense areas, bluffs and gutters, and Terraces.
M4	Placense & Pre-glacial. Placense areas, bluffs and gutters, and Terraces.
M5	Placense & Pre-glacial. Placense areas, bluffs and gutters, and Terraces.
M6	Placense & Pre-glacial. Placense areas, bluffs and gutters, and Terraces.
M7	Placense & Pre-glacial. Placense areas, bluffs and gutters, and Terraces.
M8	Placense & Pre-glacial. Placense areas, bluffs and gutters, and Terraces.
M9	Placense & Pre-glacial. Placense areas, bluffs and gutters, and Terraces.
M10	Placense & Pre-glacial. Placense areas, bluffs and gutters, and Terraces.
M11	Placense & Pre-glacial. Placense areas, bluffs and gutters, and Terraces.
M12	Placense & Pre-glacial. Placense areas, bluffs and gutters, and Terraces.
M13	Placense & Pre-glacial. Placense areas, bluffs and gutters, and Terraces.
M14	Placense & Pre-glacial. Placense areas, bluffs and gutters, and Terraces.
M15	Placense & Pre-glacial. Placense areas, bluffs and gutters, and Terraces.
M16	Placense & Pre-glacial. Placense areas, bluffs and gutters, and Terraces.
M17	Placense & Pre-glacial. Placense areas, bluffs and gutters, and Terraces.
M18	Placense & Pre-glacial. Placense areas, bluffs and gutters, and Terraces.
M19	Placense & Pre-glacial. Placense areas, bluffs and gutters, and Terraces.
M20	Placense & Pre-glacial. Placense areas, bluffs and gutters, and Terraces.
M21	Placense & Pre-glacial. Placense areas, bluffs and gutters, and Terraces.
M22	Placense & Pre-glacial. Placense areas, bluffs and gutters, and Terraces.
M23	Placense & Pre-glacial. Placense areas, bluffs and gutters, and Terraces.
M24	Placense & Pre-glacial. Placense areas, bluffs and gutters, and Terraces.
M25	Placense & Pre-glacial. Placense areas, bluffs and gutters, and Terraces.
M26	Placense & Pre-glacial. Placense areas, bluffs and gutters, and Terraces.
M27	Placense & Pre-glacial. Placense areas, bluffs and gutters, and Terraces.
M28	Placense & Pre-glacial. Placense areas, bluffs and gutters, and Terraces.
M29	Placense & Pre-glacial. Placense areas, bluffs and gutters, and Terraces.
M30	Placense & Pre-glacial. Placense areas, bluffs and gutters, and Terraces.
M31	Placense & Pre-glacial. Placense areas, bluffs and gutters, and Terraces.
M32	Placense & Pre-glacial. Placense areas, bluffs and gutters, and Terraces.
M33	Placense & Pre-glacial. Placense areas, bluffs and gutters, and Terraces.
M34	Placense & Pre-glacial. Placense areas, bluffs and gutters, and Terraces.
M35	Placense & Pre-glacial. Placense areas, bluffs and gutters, and Terraces.
M36	Placense & Pre-glacial. Placense areas, bluffs and gutters, and Terraces.
M37	Placense & Pre-glacial. Placense areas, bluffs and gutters, and Terraces.
M38	Placense & Pre-glacial. Placense areas, bluffs and gutters, and Terraces.
M39	Placense & Pre-glacial. Placense areas, bluffs and gutters, and Terraces.
M40	Placense & Pre-glacial. Placense areas, bluffs and gutters, and Terraces.
M41	Placense & Pre-glacial. Placense areas, bluffs and gutters, and Terraces.
M42	Placense & Pre-glacial. Placense areas, bluffs and gutters, and Terraces.
M43	Placense & Pre-glacial. Placense areas, bluffs and gutters, and Terraces.
M44	Placense & Pre-glacial. Placense areas, bluffs and gutters, and Terraces.
M45	Placense & Pre-glacial. Placense areas, bluffs and gutters, and Terraces.
M46	Placense & Pre-glacial. Placense areas, bluffs and gutters, and Terraces.
M47	Placense & Pre-glacial. Placense areas, bluffs and gutters, and Terraces.
M48	Placense & Pre-glacial. Placense areas, bluffs and gutters, and Terraces.
M49	Placense & Pre-glacial. Placense areas, bluffs and gutters, and Terraces.
M50	Placense & Pre-glacial. Placense areas, bluffs and gutters, and Terraces.
M51	Placense & Pre-glacial. Placense areas, bluffs and gutters, and Terraces.
M52	Placense & Pre-glacial. Placense areas, bluffs and gutters, and Terraces.
M53	Placense & Pre-glacial. Placense areas, bluffs and gutters, and Terraces.
M54	Placense & Pre-glacial. Placense areas, bluffs and gutters, and Terraces.
M55	Placense & Pre-glacial. Placense areas, bluffs and gutters, and Terraces.
M56	Placense & Pre-glacial. Placense areas, bluffs and gutters, and Terraces.
M57	Placense & Pre-glacial. Placense areas, bluffs and gutters, and Terraces.
M58	Placense & Pre-glacial. Placense areas, bluffs and gutters, and Terraces.
M59	Placense & Pre-glacial. Placense areas, bluffs and gutters, and Terraces.
M60	Placense & Pre-glacial. Placense areas, bluffs and gutters, and Terraces.
M61	Placense & Pre-glacial. Placense areas, bluffs and gutters, and Terraces.
M62	Placense & Pre-glacial. Placense areas, bluffs and gutters, and Terraces.
M63	Placense & Pre-glacial. Placense areas, bluffs and gutters, and Terraces.
M64	Placense & Pre-glacial. Placense areas, bluffs and gutters, and Terraces.
M65	Placense & Pre-glacial. Placense areas, bluffs and gutters, and Terraces.
M66	Placense & Pre-glacial. Placense areas, bluffs and gutters, and Terraces.
M67	Placense & Pre-glacial. Placense areas, bluffs and gutters, and Terraces.
M68	Placense & Pre-glacial. Placense areas, bluffs and gutters, and Terraces.
M69	Placense & Pre-glacial. Placense areas, bluffs and gutters, and Terraces.
M70	Placense & Pre-glacial. Placense areas, bluffs and gutters, and Terraces.
M71	Placense & Pre-glacial. Placense areas, bluffs and gutters, and Terraces.
M72	Placense & Pre-glacial. Placense areas, bluffs and gutters, and Terraces.
M73	Placense & Pre-glacial. Placense areas, bluffs and gutters, and Terraces.
M74	Placense & Pre-glacial. Placense areas, bluffs and gutters, and Terraces.
M75	Placense & Pre-glacial. Placense areas, bluffs and gutters, and Terraces.
M76	Placense & Pre-glacial. Placense areas, bluffs and gutters, and Terraces.
M77	Placense & Pre-glacial. Placense areas, bluffs and gutters, and Terraces.
M78	Placense & Pre-glacial. Placense areas, bluffs and gutters, and Terraces.
M79	Placense & Pre-glacial. Placense areas, bluffs and gutters, and Terraces.
M80	Placense & Pre-glacial. Placense areas, bluffs and gutters, and Terraces.
M81	Placense & Pre-glacial. Placense areas, bluffs and gutters, and Terraces.
M82	Placense & Pre-glacial. Placense areas, bluffs and gutters, and Terraces.
M83	Placense & Pre-glacial. Placense areas, bluffs and gutters, and Terraces.
M84	Placense & Pre-glacial. Placense areas, bluffs and gutters, and Terraces.
M85	Placense & Pre-glacial. Placense areas, bluffs and gutters, and Terraces.
M86	Placense & Pre-glacial. Placense areas, bluffs and gutters, and Terraces.
M87	Placense & Pre-glacial. Placense areas, bluffs and gutters, and Terraces.
M88	Placense & Pre-glacial. Placense areas, bluffs and gutters, and Terraces.
M89	Placense & Pre-glacial. Placense areas, bluffs and gutters, and Terraces.
M90	Placense & Pre-glacial. Placense areas, bluffs and gutters, and Terraces.
M91	Placense & Pre-glacial. Placense areas, bluffs and gutters, and Terraces.
M92	Placense & Pre-glacial. Placense areas, bluffs and gutters, and Terraces.
M93	Placense & Pre-glacial. Placense areas, bluffs and gutters, and Terraces.
M94	Placense & Pre-glacial. Placense areas, bluffs and gutters, and Terraces.
M95	Placense & Pre-glacial. Placense areas, bluffs and gutters, and Terraces.
M96	Placense & Pre-glacial. Placense areas, bluffs and gutters, and Terraces.
M97	Placense & Pre-glacial. Placense areas, bluffs and gutters, and Terraces.
M98	Placense & Pre-glacial. Placense areas, bluffs and gutters, and Terraces.
M99	Placense & Pre-glacial. Placense areas, bluffs and gutters, and Terraces.
M100	Placense & Pre-glacial. Placense areas, bluffs and gutters, and Terraces.

SURVEYS CARRIED OUT with the CO-OPERATION of the PROVINCIAL GOVERNMENT of BRITISH COLUMBIA.  
The Hon. JOHN ROBSON, Minister of Mines.  
1885-6.

**SUPERFICIAL GEOLOGY.**  
The Placense and Pre-glacial detritus here represented is usually only that found below the present drainage level, in the principal cross bottoms, as exposed by mining shafts and drifting; not including that exposed at higher levels by slides and by hydraulic mining, which is indicated by heavy hachures to represent banks, bluffs, or slides. The solid red line represents the lowest known erosion or gutter of the tertiary stream.  
The Pleistocene Hill and Mountain gravel, and other detrital deposits are (1) of the earliest silted up period (in part later pliocene); and (2) of the final incursions or flooding period, commonly recognized as later glacial or detrital; the latter in Cariboo are entirely above present drainage levels. They are often water levelled, and were left superficially terraced by the Pleistocene receding waters. The terraces are indicated by short light hachures.

**THE COUNTRY ROCKS.**  
D. The Lower Palaeozoic? rocks as indicated, are believed to range from Cambro-Silurian and perhaps Cambrian to Silurian, and are the slates and related rock of the country—briefly, the Cariboo Schists.  
G. The Upper Palaeozoic? rocks are believed to range from the Devonian to Carboniferous, or the "Cache Creek" horizon; they are the "Anlier Creek" chert series, and the Bear Lake beds.  
F. The Limestones bands observed and noted in the Lower Palaeozoic? formations, are biologically siliceous, and in their altitude, as represented in the section, suggest a possible folding.

NOT TO BE TAKEN FROM THE LIBRARY  
NE PAS SORTIR DE LA BIBLIOTHÈQUE

9  
3401  
.05  
1886-  
64  
OWMC

368

LIBRARY

898

B.C.  
5:1:2  
A. Geol.  
Cunningham Creek Cariboo  
1 mile to 3 inches (up to top.)  
Map no. 368