

LEGEND

- MESOZOIC**
- 9 Quartz-feldspar porphyry, rhyolite
 - 8 Biotite lamprophyre
 - 7 Diorite, gabbro (greenstone)
- YUKON GROUP**
- UPPER SCHIST FORMATION (5,6)**
- 6 Graphitic schist, graphitic phyllite, thin-bedded quartzite, argillite, quartz-mica schist, limestone
 - 5 Quartz-sericite schist
- CENTRAL QUARTZITE FORMATION (3,4)**
- 3 White to pale gray, thick-bedded cherty quartzite
 - 4 Thick-bedded quartzite, thin-bedded quartzite, graphitic phyllite, graphitic schist, argillite
- LOWER SCHIST FORMATION (1,2)**
- 2 Quartz-sericite schist
 - 1a Graphitic schist, graphitic phyllite, thin-bedded quartzite, argillite, calcareous schist, slate (includes some quartz-sericite schist (2) on Galena Hill)
 - 1b Thick-bedded quartzite, thin-bedded quartzite, phyllite, graphitic schist

- Area of rock outcrop and local float (small, large) X
- Bedding, top unknown (inclined, dip known)
- Lineament from air photographs (in some places may represent trace of a vein fault or post-ore fault)
- Post-ore fault
- Vein fault
- Prospect or open cut
- Shaft
- Adit (feasible, ceased)
- Mining property or prospect (referred to in text)

Geology compiled by R. W. Boyle from field work in 1953, 1954 and 1955; Geological Survey of Canada Summary Report Part A, Map 1960; Geological Survey of Canada, Preliminary Map 50-20 A; various private reports and maps. To accompany G.S.C. Bulletin 111, by R.W. Boyle.

Road, all weather

Other roads

Trail

Power line

Building

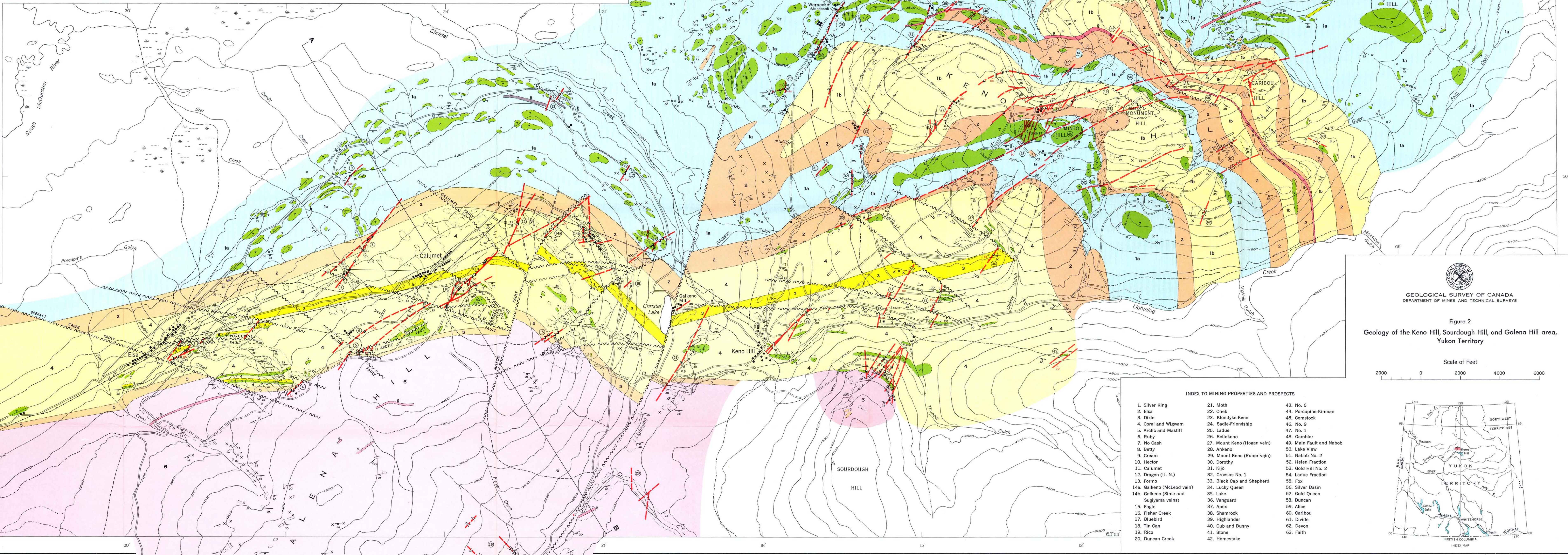
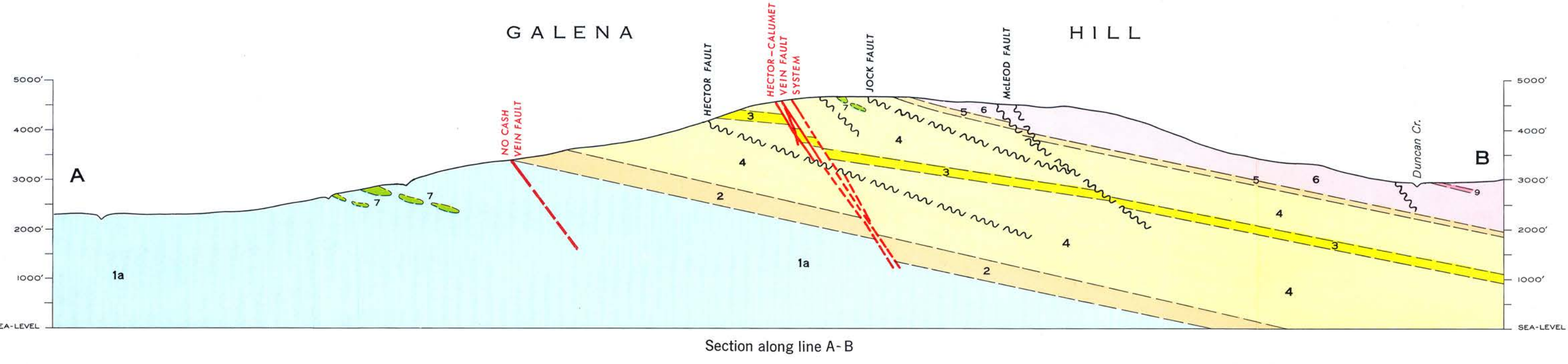
Triangulation station

Marsh

Contours (interval 200 feet)

Geological cartography by the Geological Survey of Canada, 1964
Base map cartography by the Geological Survey of Canada, from maps prepared by the Surveys and Mapping Branch, 1956, with minor revisions by the Geological Survey of Canada.

Approximate magnetic declination 33° 46' E, decreasing by 4.3' annually

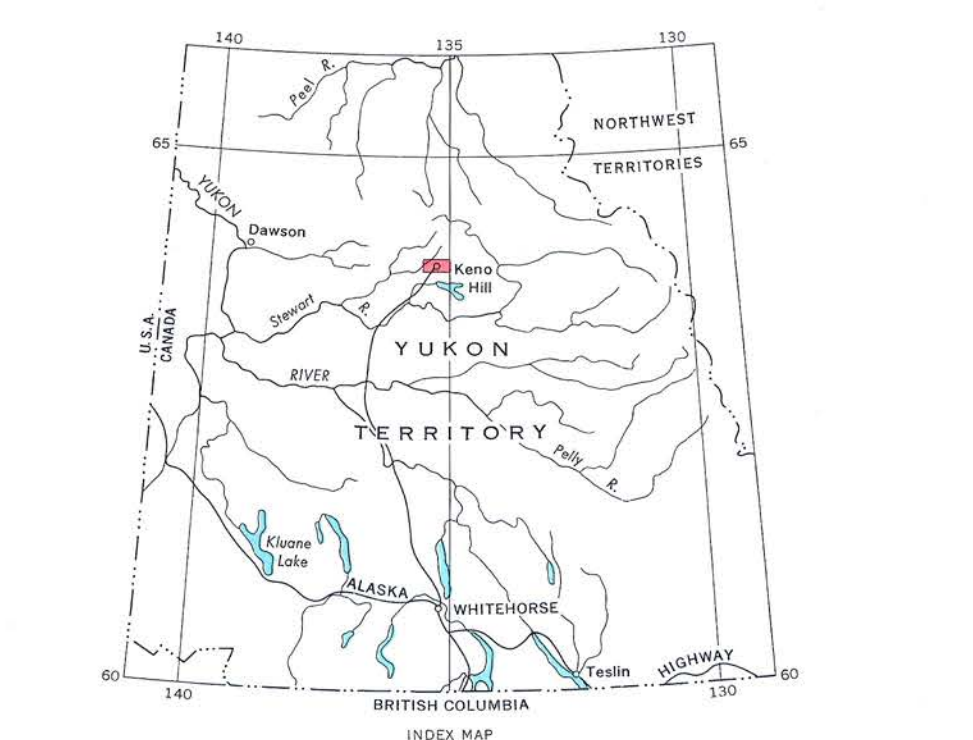
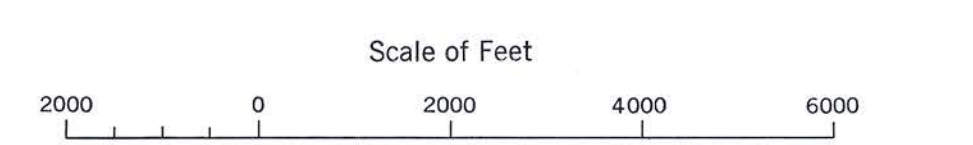


INDEX TO MINING PROPERTIES AND PROSPECTS

1. Silver King	21. Moth	43. No. 6
2. Elser	22. Onak	44. Porcupine-Kinman
3. Dixie	23. Klondyke-Keno	45. Comstock
4. Coral and Wigwag	24. Sadie-Friendship	46. No. 9
5. Arctic and Mastiff	25. Ladue	47. No. 1
6. Ruby	26. Bellekeno	48. Gambler
7. No Cash	27. Mount Keno (Hogan vein)	49. Main Fault and Nabob
8. Betty	28. Ankeno	50. Lake View
9. Cream	29. Mount Keno (Runer vein)	51. Nabob No. 2
10. Hector	30. Dorothy	52. Helen Fraction
11. Calumet	31. Kijis	53. Gold Hill No. 2
12. Dragon (U. N.)	32. Crosses No. 1	54. Ladue Fraction
13. Formo	33. Black Cap and Shepherd	55. Fox
14a. Galkeno (McLeod vein)	34. Lucky Queen	56. Silver Basin
14b. Galkeno (Sime and Sugiyama veins)	35. Lake	57. Gold Queen
15. Eagle	36. Vanguard	58. Duncan
16. Fisher Creek	37. Apex	59. Alice
17. Bluebird	38. Shamrock	60. Caribou
18. Tin Can	39. Highlander	61. Divide
19. Rico	40. Cub and Bunny	62. Devon
20. Duncan Creek	41. Stone	63. Faith
	42. Homestake	

GEOLOGICAL SURVEY OF CANADA
DEPARTMENT OF MINES AND TECHNICAL SURVEYS

Figure 2
Geology of the Keno Hill, Sourdough Hill, and Galena Hill area, Yukon Territory



This document was produced by scanning the original publication. Ce document est le produit d'une numérisation par balayage de la publication originale.