



GEOLOGICAL SURVEY OF CANADA
DEPARTMENT OF MINES AND TECHNICAL SURVEYS

Figure 8
Generalized geology, Yellowknife Greenstone Belt,
District of Mackenzie

Scale 1:48,000

1 inch to 4,000 feet



LEGEND

- PROTEROZOIC**
- Diabase, gabbro
 - Granodiorite
 - Meta-gabbro sills
- YELLOWKNIFE GROUP**
Quartzite, conglomerate, graywacke, meta-basalt, meta-andesite, dacite, rhyolite, tuff, and agglomerate; undifferentiated meta-gabbro
- ARCHAEAN**
- Dacite; tuff and agglomerate
 - Cherty tuffs
 - Variolitic pillow lava
 - Meta-basalt, meta-andesite, tuff, agglomerate; undifferentiated meta-diorite, meta-gabbro and quartz-feldspar porphyry
 - Conglomerate, quartzite (age relative to Yellowknife Group uncertain)

- Bedding (inclined)
- Fault (probably post-diacite)
- Fault, schist zone (probably pre-diacite)
- Mine shaft

INDEX TO MAIN STRUCTURAL MARKERS

- | | |
|------------------|---------------------------|
| 8 Ranney chert | 4 Fox flows |
| 7 Ranney tuff | 3 Townsite flow and sills |
| 6 Stock flows | 2 Negus flows |
| 5 Cemetery tuffs | 1 Yellorex flows |
- A-D Diabase dykes

Geology by J. F. Henderson and I. C. Brown, 1946-1953

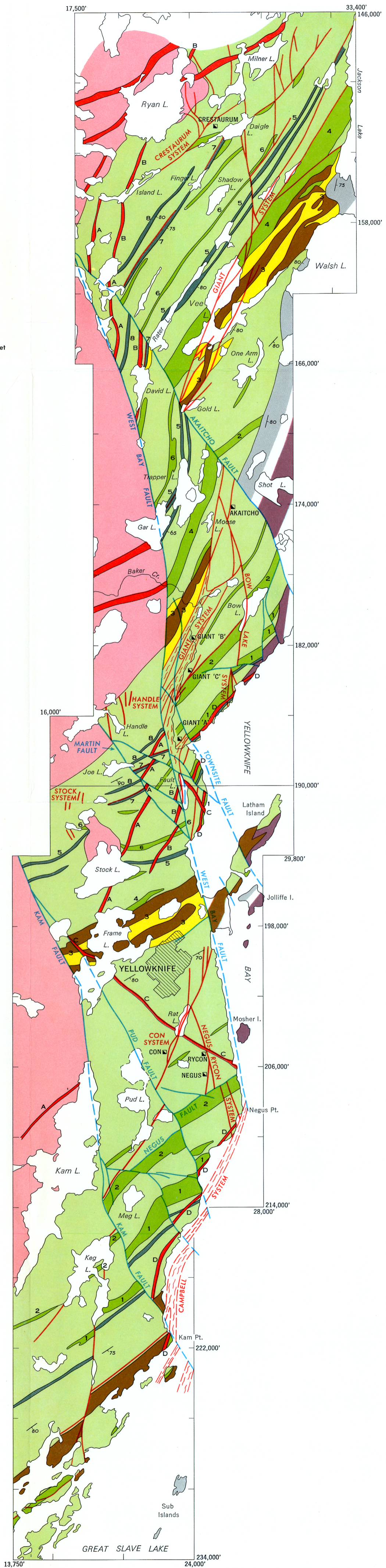
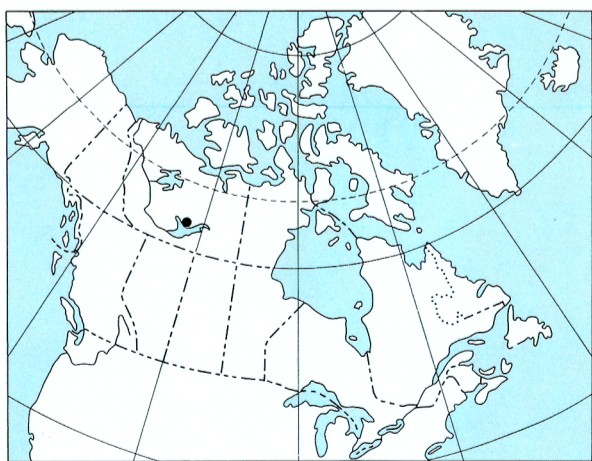
To accompany G.S.C. Bulletin 141, by J. F. Henderson and I. C. Brown

Cartography by the Geological Survey of Canada, 1966.
Base-map compiled by the Topographical Survey, 1946
with revisions by the Geological Survey of Canada.

Origin of co-ordinates: Latitude 63°00'; Longitude 114°30'.
Geographic position based on astronomical observations

Geographical names subject to revision

Approximate magnetic declination 31° 57' East,
decreasing 6.5' annually.



This document was produced by scanning the original publication.
Ce document est le produit d'une numérisation par balayage de la publication originale.