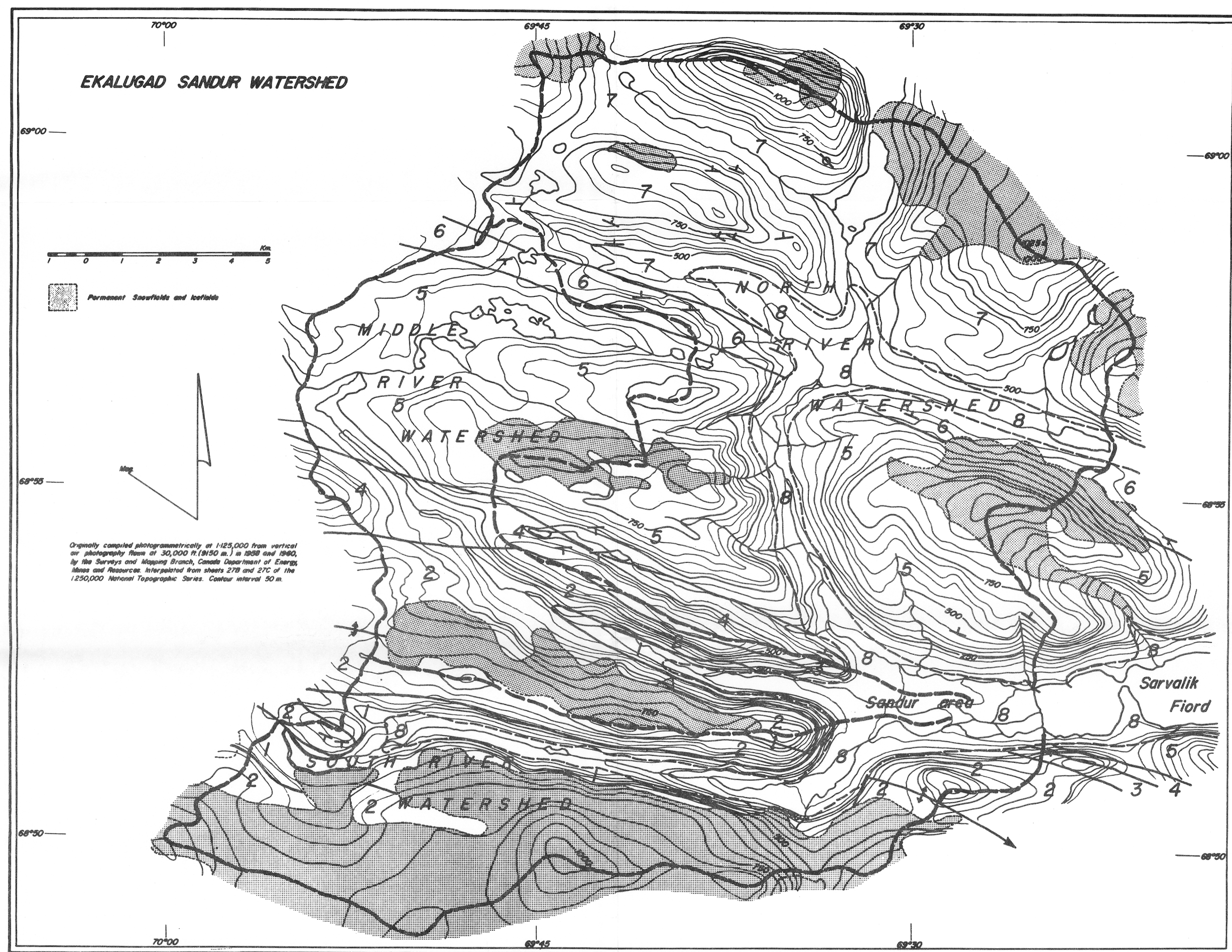


FIG. 1. Central Baffin Island; drainage and extent of major alluvial deposits. The two major field areas are indicated by arrows on the map.



Key for Figure 9

- 8 recent deposits (mainly glacial-fluvial and colluvial materials)
- 7 biotite-quartz-feldspar gneiss
- 6 biotite-feldspar schist
- 5 biotite-quartz-plagioclase gneiss
- 4 biotite-plagioclase schist (closely interbedded with no. 3)
- 3 biotite-plagioclase gneiss
- 2 muscovite-biotite-quartz-orthoclase gneiss
- 1 migmatitic gneiss

Figure 9. Ekalugad sandur watershed; reconnaissance bedrock geology and watershed limits.

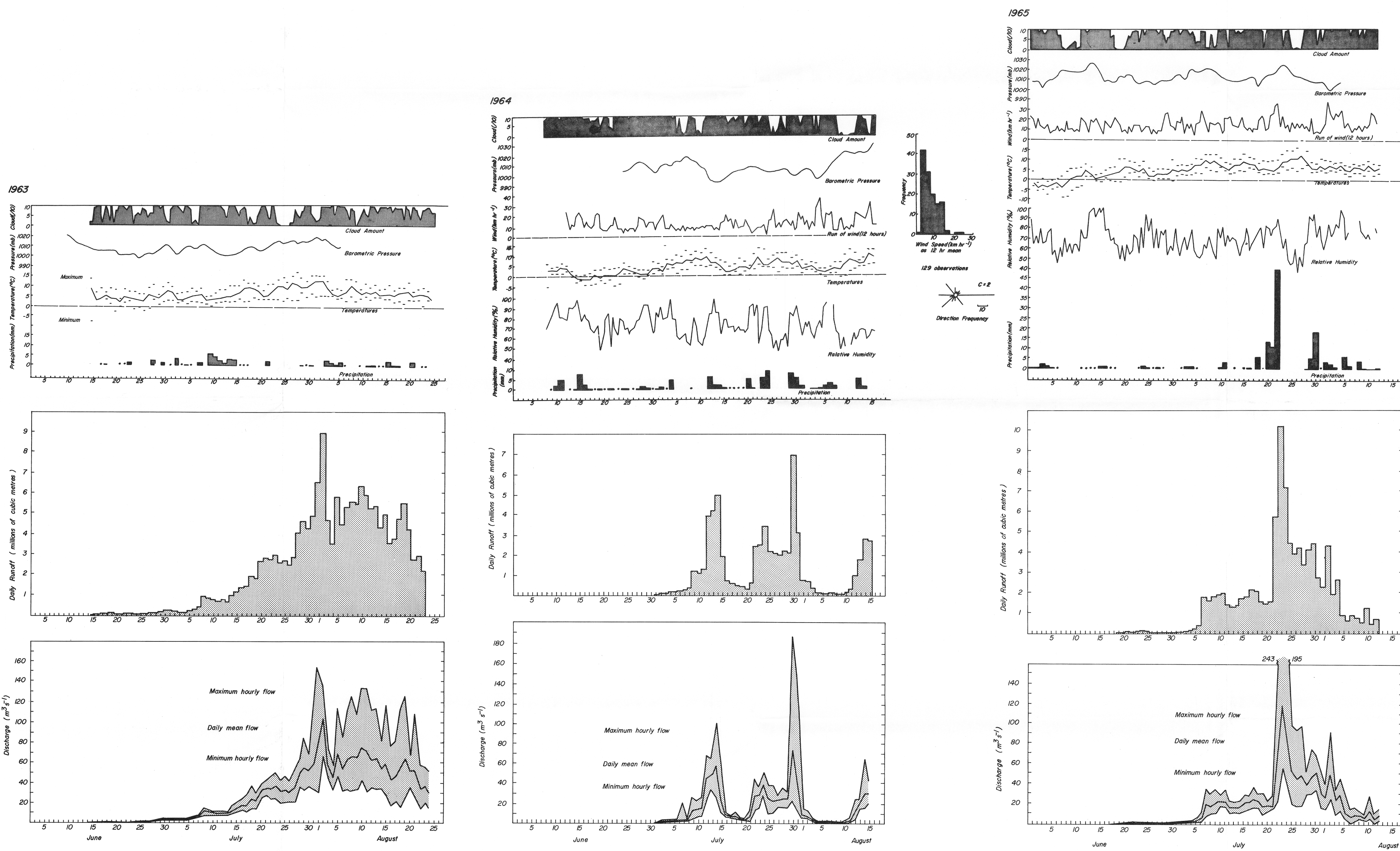


Figure 14. Summary of runoff and weather at Lewis River: 1963-1965.