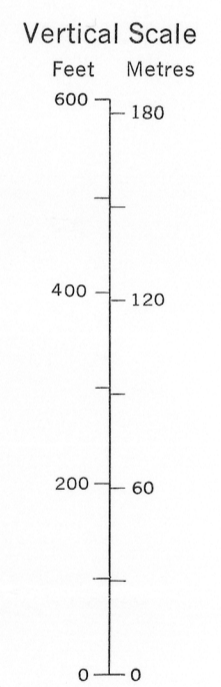
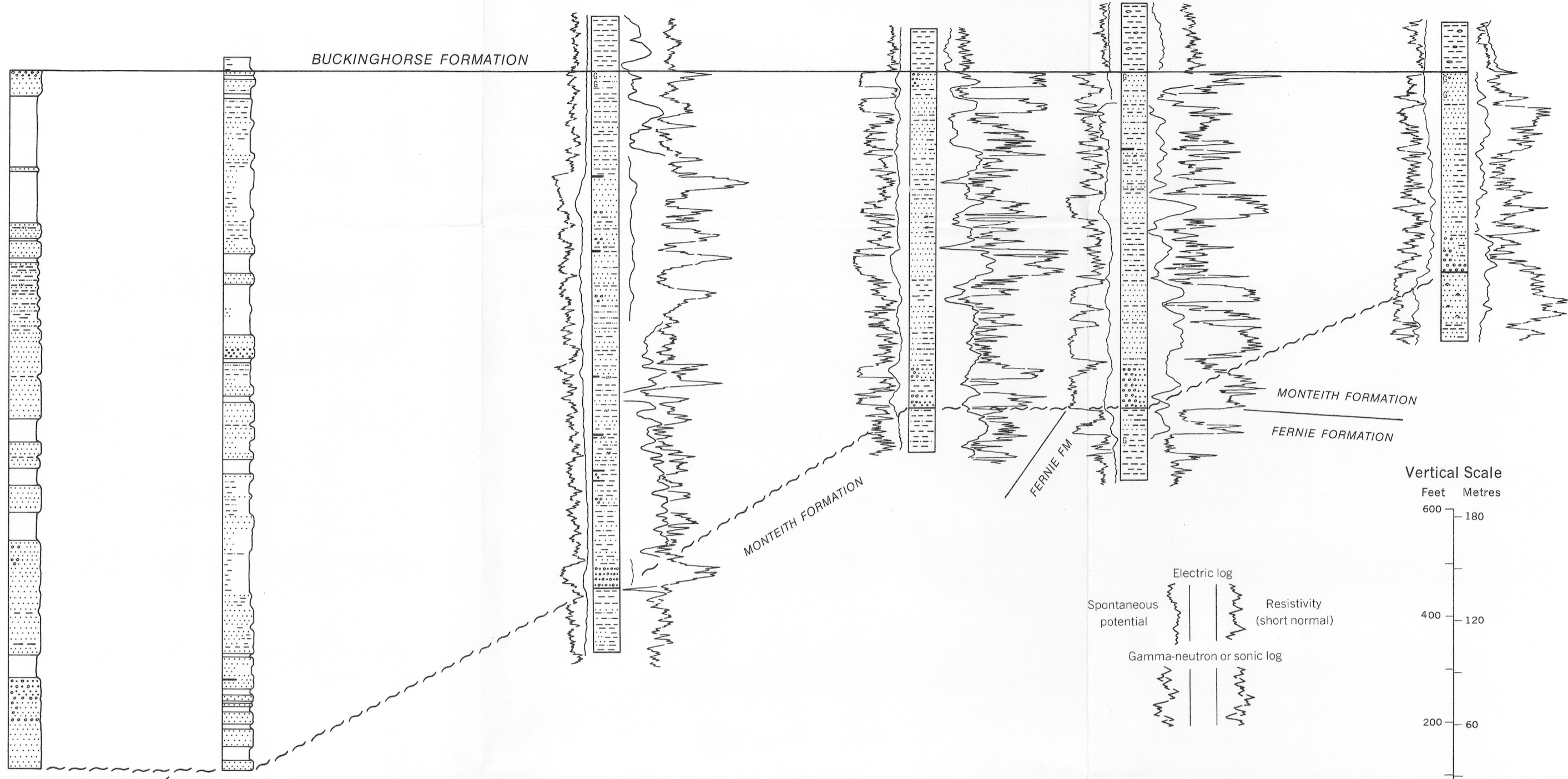




62-11 Fiddes Creek 68-9 Halfway River HB Cypress a-28-F a-28-F/94-B-15 FPC Richfield North Diaber 1 c-76-D/94-B-16 Phillips Blair A-1 85-E/94-B-16 Gulf States Gundy Creek No. 4 d-4-B/94-B-16



Electric log
Spontaneous potential Resistivity (short normal)
Gamma-neutron or sonic log

LEGEND

- | | | | | |
|---------------------------|----------------------|---------------------|-----------|----------------------|
| Conglomerate or pebbles | Siltstone, sandy | Shale or mudstone | Bentonite | Glauconite |
| Sandstone, coarse-grained | Siltstone | Shale, carbonaceous | Coal | Not exposed |
| Sandstone, fine-grained | Siltstone, shaly | Shale, calcareous | Limestone | Sandstone, quartzose |
| Sandstone, silty | Shale, concretionary | | | |

Formation boundary
Unconformity
Section (for location see figure 1) 64-16

Geology by D.F. Stott, 1961-1970
To accompany GSC Bulletin 219 by D.F. Stott, 1972

Figure 10. Columnar sections of Bullhead Group, illustrating variations in lithologies, facies and thicknesses between Fiddes Creek and Gulf States Gundy Creek No. 4

Figure 10

This document was produced by scanning the original publication. Ce document est le produit d'une numérisation par balayage de la publication originale.