

1 Sun et al
 Chetwynd 14-20-77-23
 14-20-77-23W6 37 km
 23 miles

2 Monsanto Dome
 Bear Flat
 6-30-84-20W6 94.9 km
 59 miles

3 (Phillips) Town "A"
 No. 2
 c-16-J/94-B-16 20.9 km
 13 miles

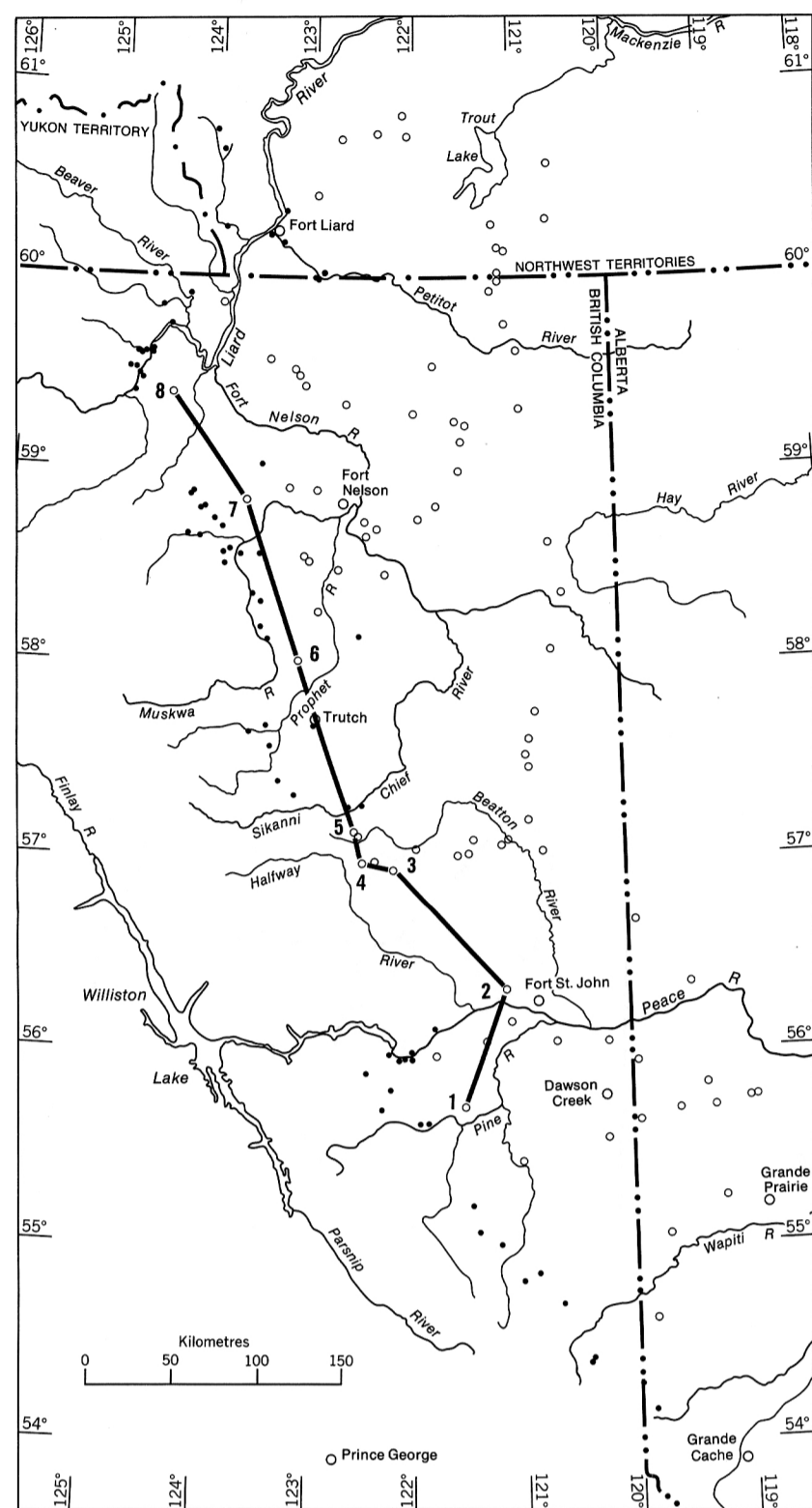
4 Texaco
 Texcan Blair d-71-l
 d-71-l/94-B-15 16 km
 10 miles

5 Sinclair et al
 Julienne c-54-H
 c-54-H/94-G-2 104.6 km
 65 miles

6 C D R Pac Sinc
 Prophet d-21-B
 d-21-B/94-J-3 98 km
 61 miles

7 Pacific SR Candel
 Kledo c-14-G
 c-14-G/94-J-13 74 km
 46 miles

8 IOE Dunedin
 d-75-E
 d-75-E/94-N-8



- Conglomerate or pebbles
 - Sandstone, coarse grained
 - Sandstone, fine grained
 - Sandstone, silty
 - Siltstone, sandy
 - Siltstone
 - Siltstone, shaly
 - Shale, concretionary
 - Shale or mudstone, blocky or rubbly
 - Shale, fissile
 - Shale, calcareous
 - Shale, carbonaceous
 - Bentonite
 - Coal
 - Glauconite
 - Not exposed
- Formation contact
 Unconformity
 Facies
 Fossil locality (Calgary, Ottawa GSC catalogue numbers) C-77, GSC loc. 69178
 Section (for location see Figure 2) 48

Geology by D.F. Stott, 1957-1975
 To accompany GSC Bulletin 328 by D.F. Stott

This document was produced by scanning the original publication.
 Ce document est le produit d'une numérisation par balayage de la publication originale.

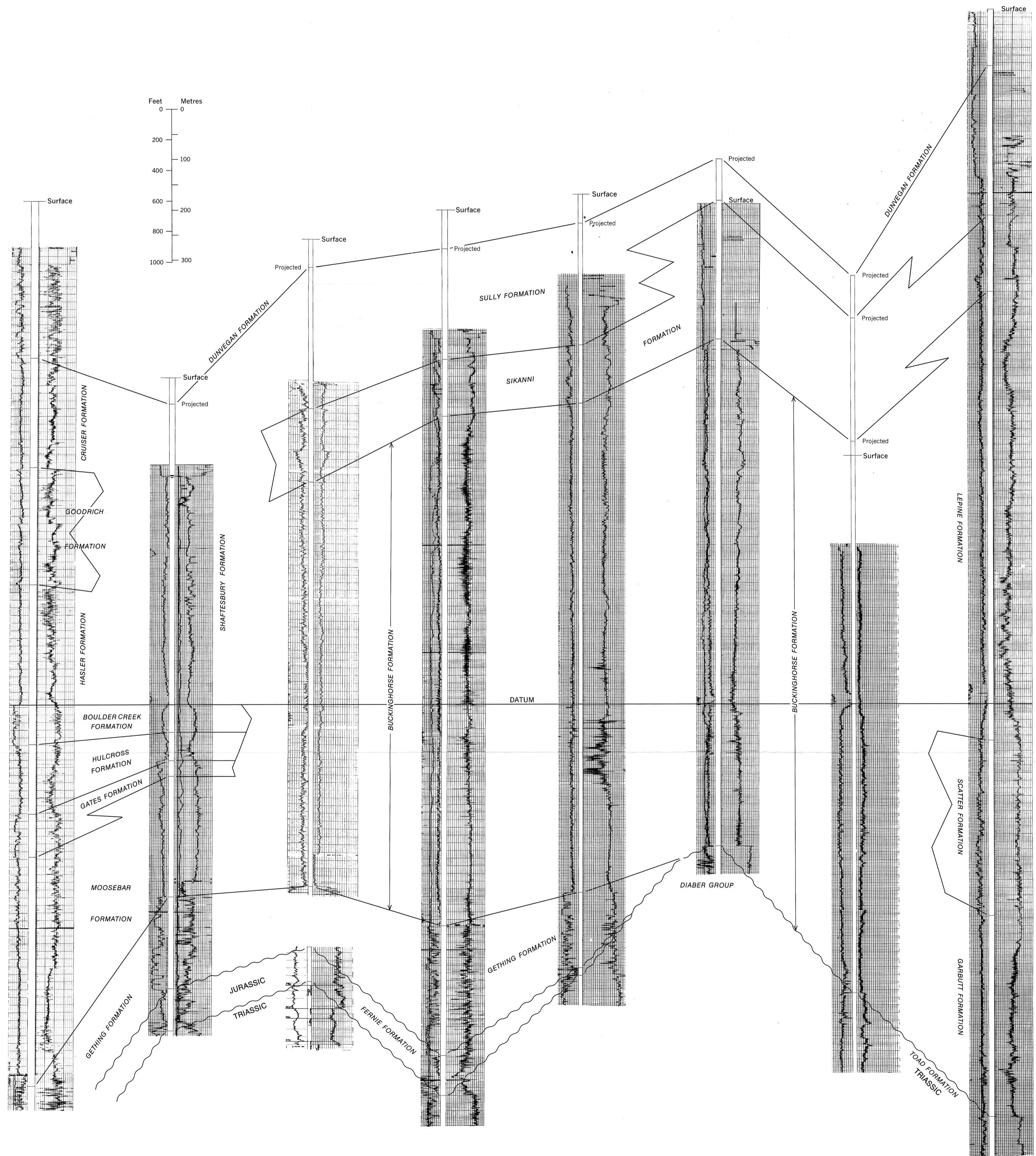


Figure 10. Columnar sections of Fort St. John Group and Dunvegan Formation between Sun et al. Chetwynd 14-20-77-23 well and IOE Dunedin d-75-E well.