

Figure 4c. Serial cross-sections of the Deserters Range. Base lines of the sections are drawn on a true geographic base and the vertical scale is everywhere the same as the horizontal scale. Dips of contacts are distorted as a result of the projection.

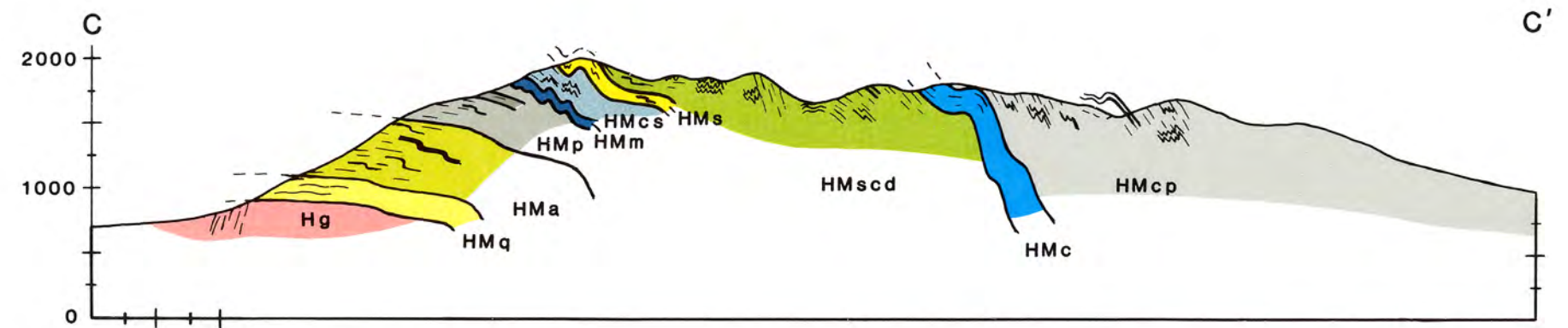


Figure 4b. Cross-section of Henry's Ridge, Deserters Range

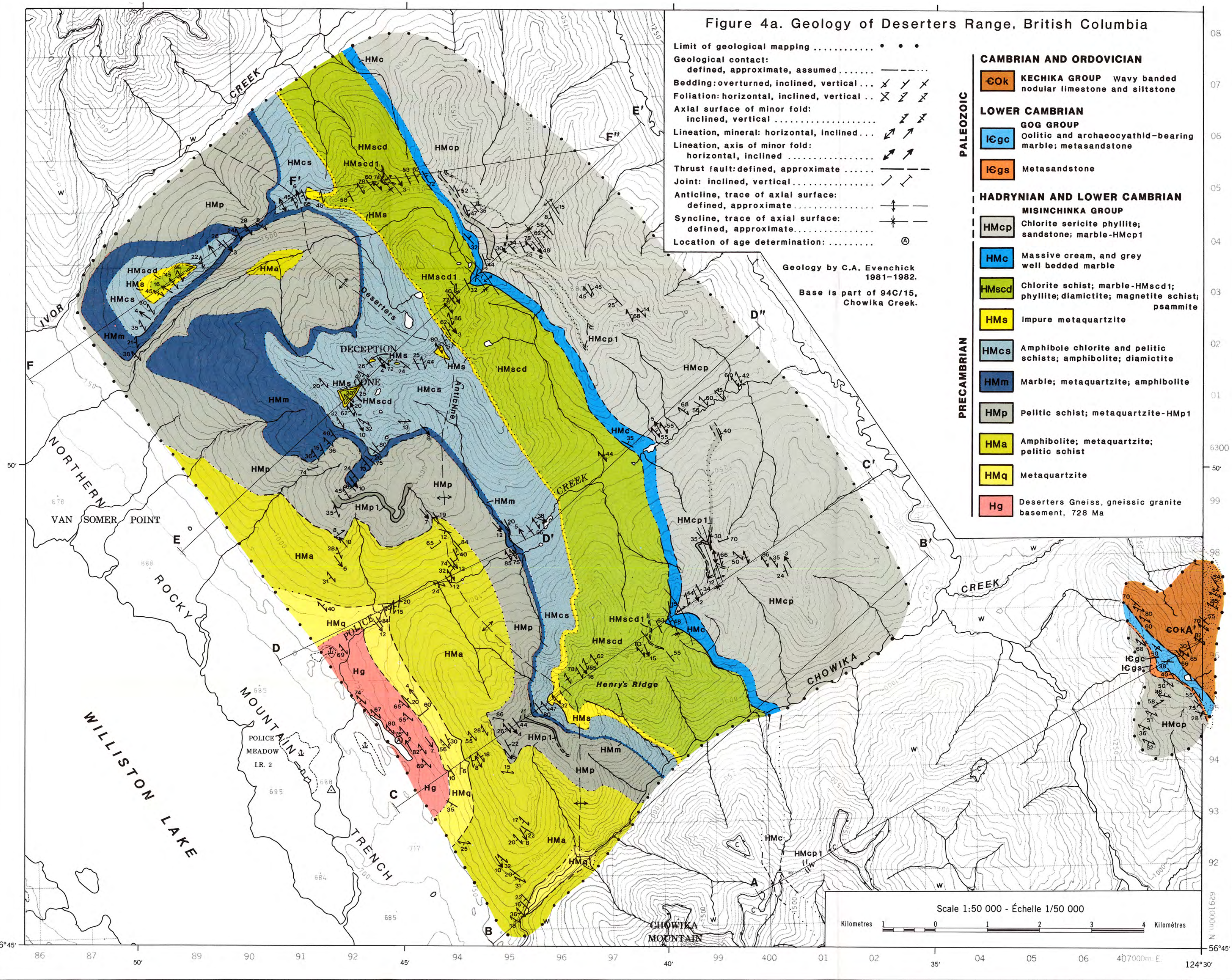


Figure 4a. Geology of Deserters Range, British Columbia

Limit of geological mapping
Geological contact:	
defined, approximate
Bedding: overturned, inclined, vertical
Foliation: horizontal, inclined, vertical
Axial surface of minor fold:	
inclined, vertical
Lineation, mineral: horizontal, inclined
Lineation, axis of minor fold:	
horizontal, inclined
Thrust fault: defined, approximate
Joint: inclined, vertical
Anticline, trace of axial surface:	
defined, approximate
Syncline, trace of axial surface:	
defined, approximate
Location of age determination

PALEOZOIC	CAMBRIAN AND ORDOVICIAN	COk KECHIKA GROUP Wavy banded nodular limestone and siltstone
	LOWER CAMBRIAN	IGc GOG GROUP Oolitic and archaeocyathid-bearing marble; metasandstone
		IGs Metasandstone
PRECAMBRIAN	HADRYNIAN AND LOWER CAMBRIAN MISINCHINKA GROUP	HMcp Chlorite sericite phyllite; sandstone; marble-HMcp1
		HMc Massive cream, and grey well bedded marble
		HMscd Chlorite schist; marble-HMscd1; phyllite; diamictite; magnetite schist; psammite
		HMs impure metaquartzite
		HMcs Amphibole chlorite and pelitic schists; amphibolite; diamictite
		HMm Marble; metaquartzite; amphibolite
		HMp Pelitic schist; metaquartzite-HMp1
	HMa Amphibolite; metaquartzite; pelitic schist	
	HMq Metaquartzite	
	Hg Deserters Gneiss, gneissic granite basement, 728 Ma	

Geology by C.A. Evenchick 1981-1982.
Base is part of 94C/15, Chowika Creek.

Scale 1:50 000 - Échelle 1/50 000
Kilometres 1 2 3 4 Kilometres