

LEGEND

- CENOZOIC**
- TERTIARY EOCENE OR LATER
 - 12 Rhyolite, trachyte (flow rocks)
- MESOZOIC**
- CRETACEOUS (?)
 - 11 Quartz-feldspar porphyry, granite porphyry
 - 10 Granodiorite, granite, diorite
 - 9 Meta-diorite, meta-gabbro (greenstone) (only the larger bodies are shown)
- PALAEZOIC**
- ORDOVICIAN TO SILURIAN
 - 8 Dolomite, minor limestone
- PRECAMBRIAN AND/OR PALAEZOIC**
- YUKON GROUP (1-7)
 - 7 Pebbly quartzite, phyllitic quartzite, slate, phyllite, minor limestone (age uncertain)
 - 6 Slate, schist, quartzite, minor limestone
 - 5 Quartzite, quartz-mica schist, slate, minor limestone
 - 4 Quartz-mica schist, pebbly quartzite, minor limestone, skarn in vicinity of 10
 - 3 Quartz-mica schist, graphitic schist, phyllitic quartzite, minor limestone, skarn in vicinity of 10
 - 2 Thick-bedded quartzite, thin-bedded quartzite, graphitic schist, minor limestone, skarn in vicinity of 10
 - 1 Graphitic schist, thin-bedded quartzite, quartz-mica schist, phyllite, calcareous schist and quartzite

- Drift-covered area
- Bedding (horizontal, inclined, vertical)
- Bedding inclined (direction of dip known, top of bed unknown)
- Schistosity, foliation (inclined, vertical)
- Syncline (arrow indicates plunge)
- Anticline (arrow indicates plunge)
- Anticline and syncline (overturned)
- Glacial striae
- Late fault (approximate, assumed)

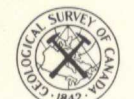
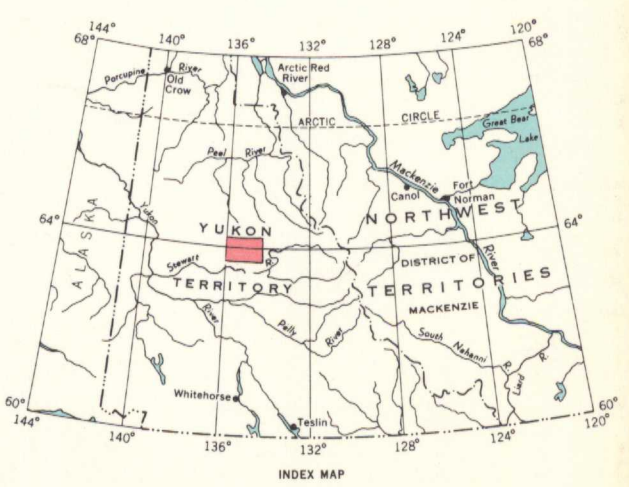
Geology compiled by R. W. Boyle, from published Geological Survey of Canada maps, 890A, 1105A, 43-9, 5-1956, 8-1958, 9-1958 and 15-1962, with additional field surveys by R. W. Boyle

To accompany G. S. C. Bulletin 111, by R. W. Boyle

Geological cartography by the Geological Survey of Canada, 1964

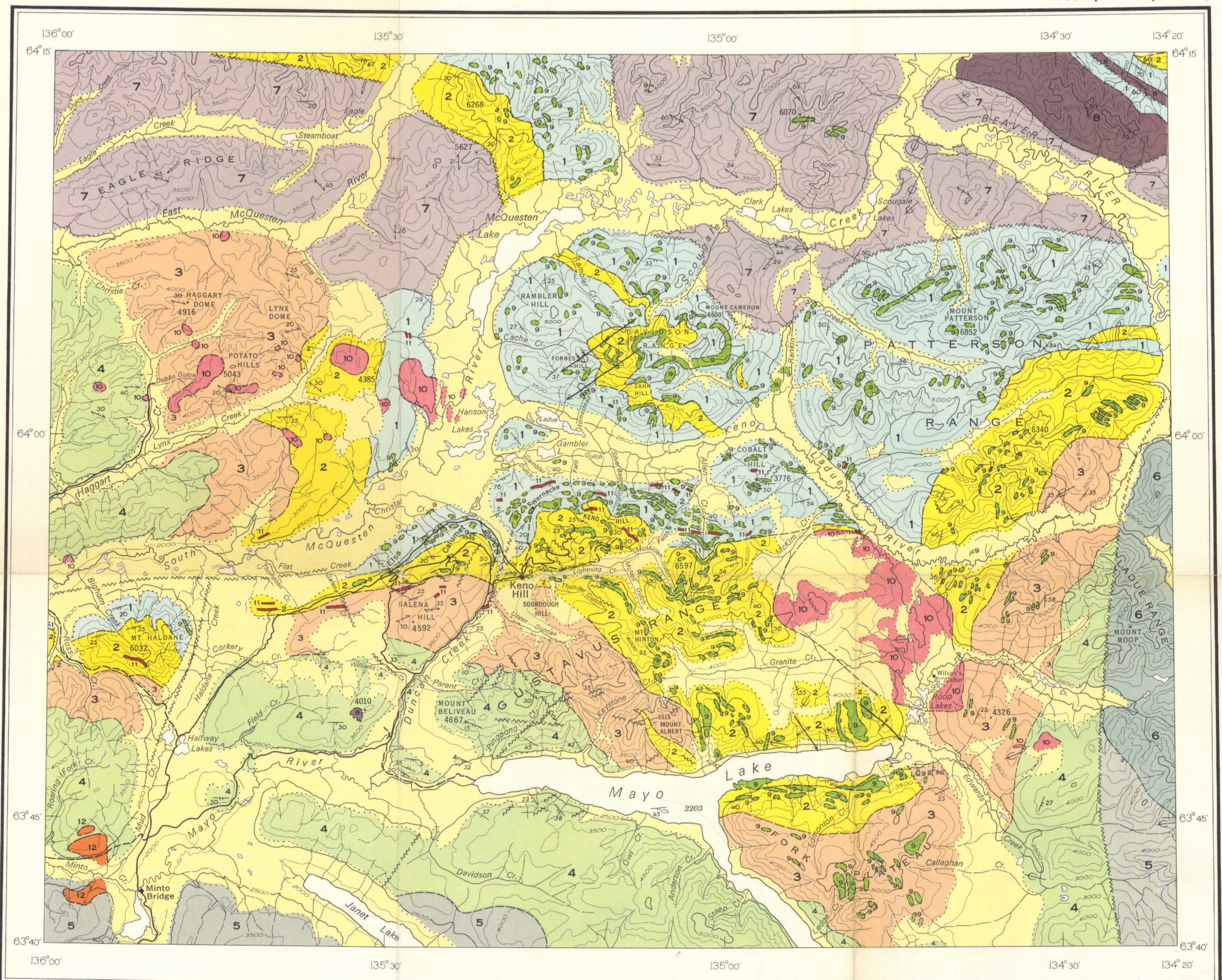
- Road, all weather
- Other roads
- Contours (interval 500 feet)
- Height in feet above mean sea-level

Base-map cartography by the Geological Survey of Canada, from maps published by the Surveys and Mapping Branch and the Army Survey Establishment, R. C. E., with minor revisions by the Geological Survey of Canada



GEOLOGICAL SURVEY OF CANADA
DEPARTMENT OF MINES AND TECHNICAL SURVEYS

105 M, 106 D (Parts of)

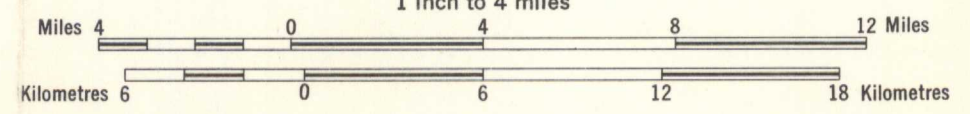


PUBLISHED, 1964
COPIES OF THIS MAP MAY BE OBTAINED FROM THE DIRECTOR, GEOLOGICAL SURVEY OF CANADA, OTTAWA

PRINTED BY THE SURVEYS AND MAPPING BRANCH

MAP 1147A
GEOLOGY
KENO HILL-GALENA HILL AREA
YUKON TERRITORY

Scale 1:253,440
1 inch to 4 miles



Mean magnetic declination, 33°50' East, decreasing 4.2' annually. Readings vary from 34°00' in the SE corner to 33°48' in the NW corner of map-area

NOT TO BE TAKEN FROM LIBRARY
NE PAS SORTIR DE LA BIBLIOTHÈQUE



1147A